

# V&V Reference Report

## L2 ASCDS Version : 8.4.5

Observation 10290 - L2 Version 2  
Chandra X-Ray Center

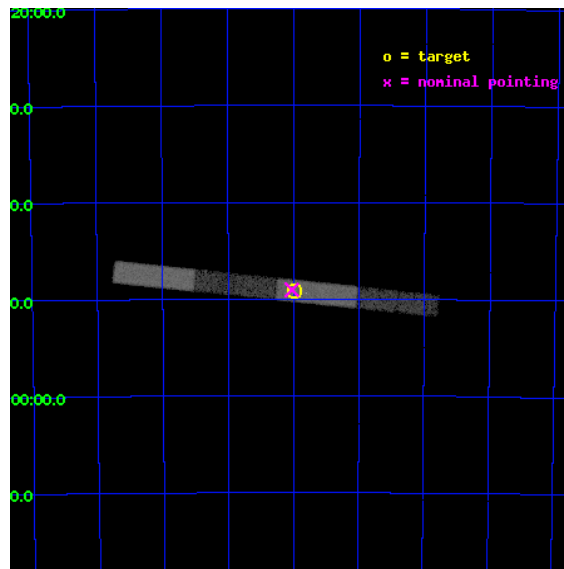
L2 Processing Date : Jun 8 2012

## Contents

<b>1</b>	<b>Front</b>	<b>2</b>
<b>2</b>	<b>OBI</b>	<b>3</b>
2.1	OBI . . . . .	3
2.1.1	Images . . . . .	3
2.1.2	Bias . . . . .	3
2.1.3	Parameters . . . . .	4
2.1.4	Events . . . . .	4
2.2	Compared Parameters . . . . .	5
2.3	Aspect . . . . .	6
2.4	Star Slots . . . . .	9
2.4.1	Slot 3 . . . . .	9
2.4.2	Slot 4 . . . . .	10
2.4.3	Slot 5 . . . . .	11
2.4.4	Slot 6 . . . . .	12
2.4.5	Slot 7 . . . . .	13
2.5	FID Slots . . . . .	14
2.5.1	Slot 0 . . . . .	14
2.5.2	Slot 1 . . . . .	15
2.5.3	Slot 2 . . . . .	16
<b>A</b>	<b>Summary</b>	<b>17</b>
A.1	Status . . . . .	17
A.2	Comments . . . . .	17

# 1 Front

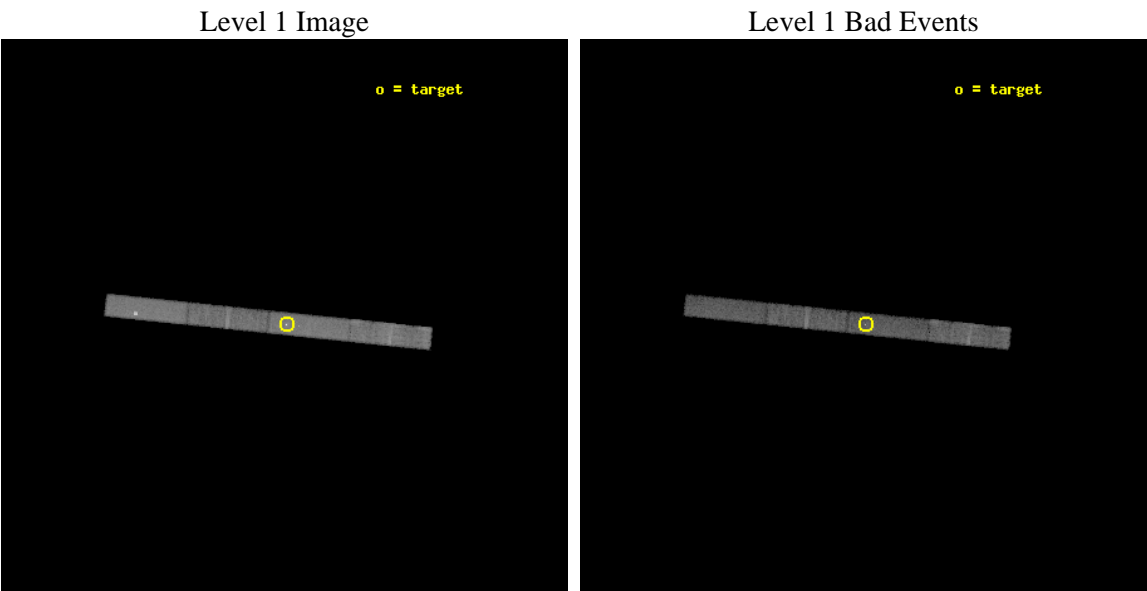
seq_num	701833	Sequence number
obs_id	10290	Observation id
title	Short-time monitoring of extreme spectral variations in Seyfert 2s	&#160
observer	Dr Guido Risaliti	Principal investigator
object	NGC 6300	Source name
dtcycle	0	&#160
cycle	P	events from which exps? Prim/Second/Both
ra_targ	259.247917	Observer's specified target RA [deg]
dec_targ	-62.820556	Observer's specified target Dec [deg]
ra_nom	259.25633044929	Nominal RA [deg]
dec_nom	-62.817589396004	Nominal Dec [deg]
roll_nom	5.8635518803831	Nominal Roll [deg]
revision	2	Processing version of data
ontime	9827.8329893351	Sum of GTIs [s]
livetime	9440.3990138084	Livetime [s]
ontime5	9827.7919493318	Sum of GTIs [s]
ontime6	9827.7509093285	Sum of GTIs [s]
ontime7	9827.8329893351	Sum of GTIs [s]
ontime8	9827.7098693252	Sum of GTIs [s]
l2events	47039	Number of level 2 events



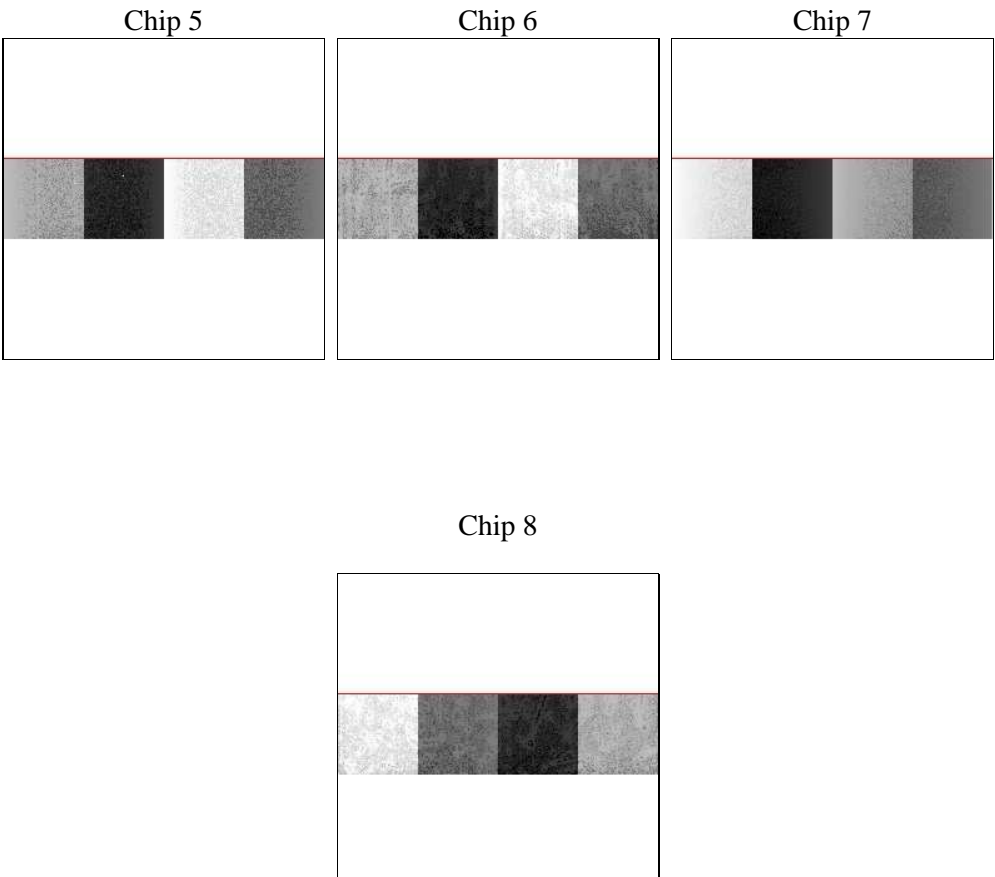
# 2 OBI

## 2.1 OBI

### 2.1.1 Images



### 2.1.2 Bias



### 2.1.3 Parameters

obi_num	0	Obi number	sched_exp_time	9688.589000	[s] Scheduled observation exposure time
ascdsver	8.4.5	Processing system revision	ontime	9827.8329893351	Sum of GTIs [s]
caldbver	4.4.10	&#160	ontime5	9827.7919493318	Sum of GTIs [s]
date	2012-06-08T07:56:47	Date and time of file creation	ontime6	9827.7509093285	Sum of GTIs [s]
revision	2	Processing version of data	ontime7	9827.8329893351	Sum of GTIs [s]
			ontime8	9827.7098693252	Sum of GTIs [s]
			l1events	161047	Number of level 1 events

### 2.1.4 Events

	ccd 5	ccd 6	ccd 7	ccd 8
level 1 events	45469	30295	44747	40536
rejected events	22257	26532	22608	31575
rejected %	48%	87%	50%	77%

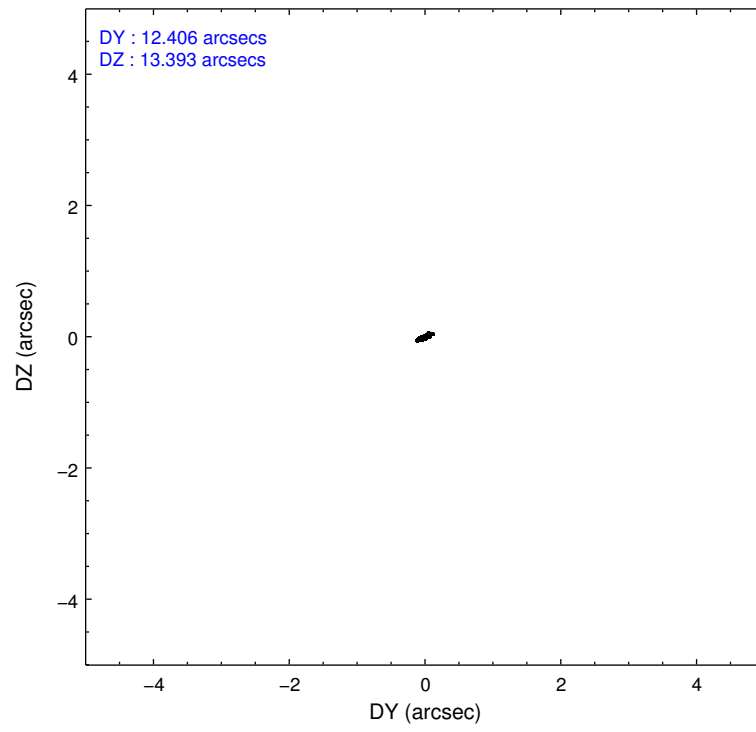
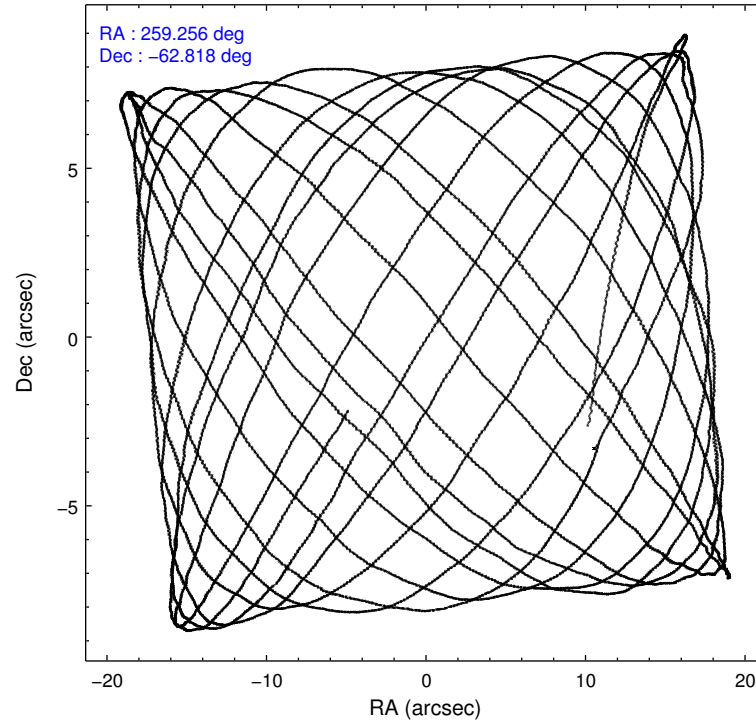
	ccd 5	ccd 6	ccd 7	ccd 8
grade 0 events	5465	1398	2761	2718
	12%	4%	6%	6%
grade 1 events	71	10	96	19
	0%	0%	0%	0%
grade 2 events	5900	713	4774	1823
	12%	2%	10%	4%
grade 3 events	1101	475	2283	1033
	2%	1%	5%	2%
grade 4 events	1060	465	2137	936
	2%	1%	4%	2%
grade 5 events	3426	1287	3786	1686
	7%	4%	8%	4%
grade 6 events	9691	712	10192	2451
	21%	2%	22%	6%
grade 7 events	18755	25235	18718	29870
	41%	83%	41%	73%

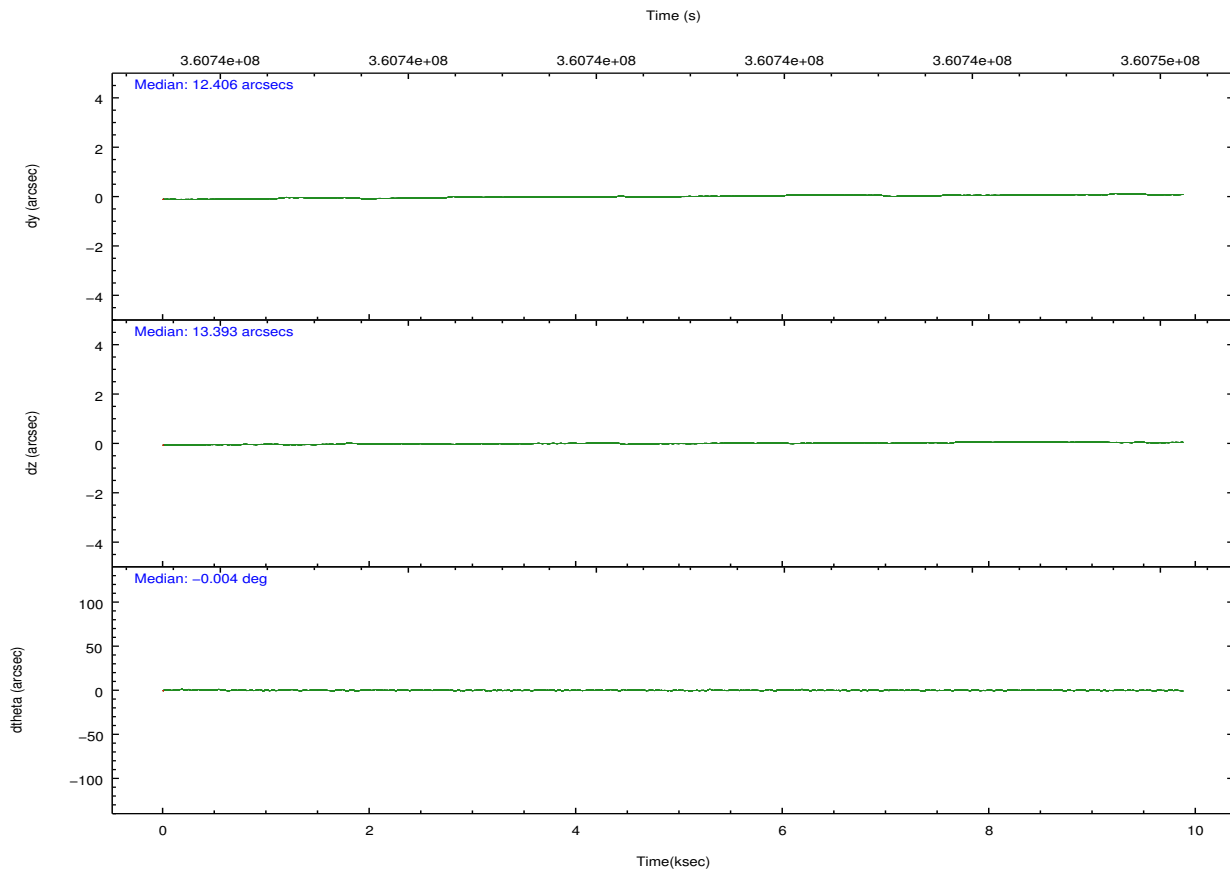
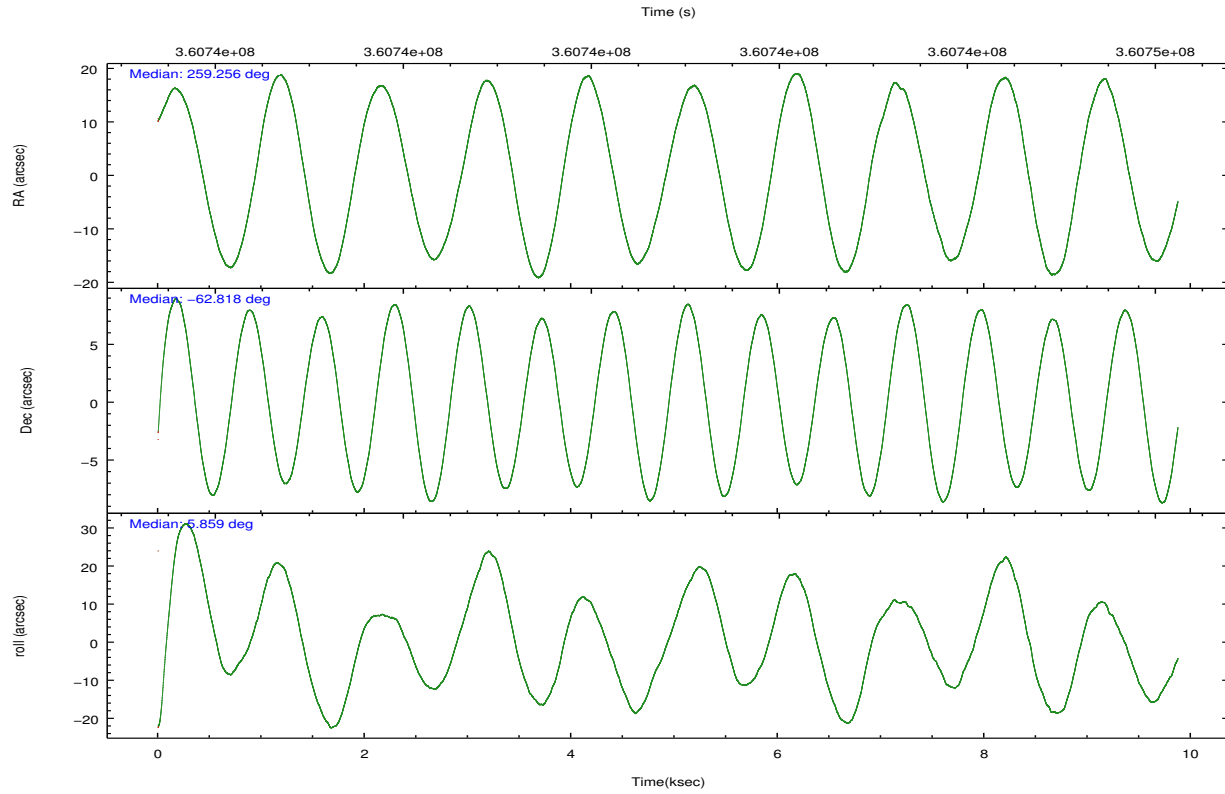


## 2.2 Compared Parameters

Parameter	Planned	Actual	Parameter	Planned	Actual
Instrument	ACIS	ACIS	Obspar format version number	7	7
Detector	ACIS-5678	ACIS-5678	Obspar file type	PREDICTED	ACTUAL
Grating	NONE	NONE	Obspar update status	NONE	UPDATED
Data mode	FAINT	FAINT	Number of optional ACIS chips dropped	0	0
Observation mode	POINTING	POINTING	On-chip summing requested	N	N
[deg] Pointing RA	259.208285	259.2563304492937	Subarray requested	CUSTOM	1/4
[deg] Pointing Dec	-62.833909	-62.81758939600381	Subarray start row	385	385
[deg] Pointing Roll	5.664246	5.863551880383058	Subarray row count	256	256
[mm] SIM focus pos	-0.684267	-0.6828225247311905	Alternating exposures requested	N	N
[mm] SIM defocus	0	0.001444936568705701	[s] Primary exposure time	0.000000	1
[mm] SIM translation stage pos	-190.132523	-190.1425803651734			
[mm] SIM translation stage offset	0	0.01005778216563158			
[s] Observation start time (MET)	360736065.184000	360735362.58483			
Observation start date	2009-06-07T04:26:39	2009-06-07T04:16:02			
[s] Observation end time (MET)	360745753.184000	360745973.38536			
Observation end date	2009-06-07T07:08:07	2009-06-07T07:12:53			
Read mode	TIMED	TIMED			

## 2.3 Aspect



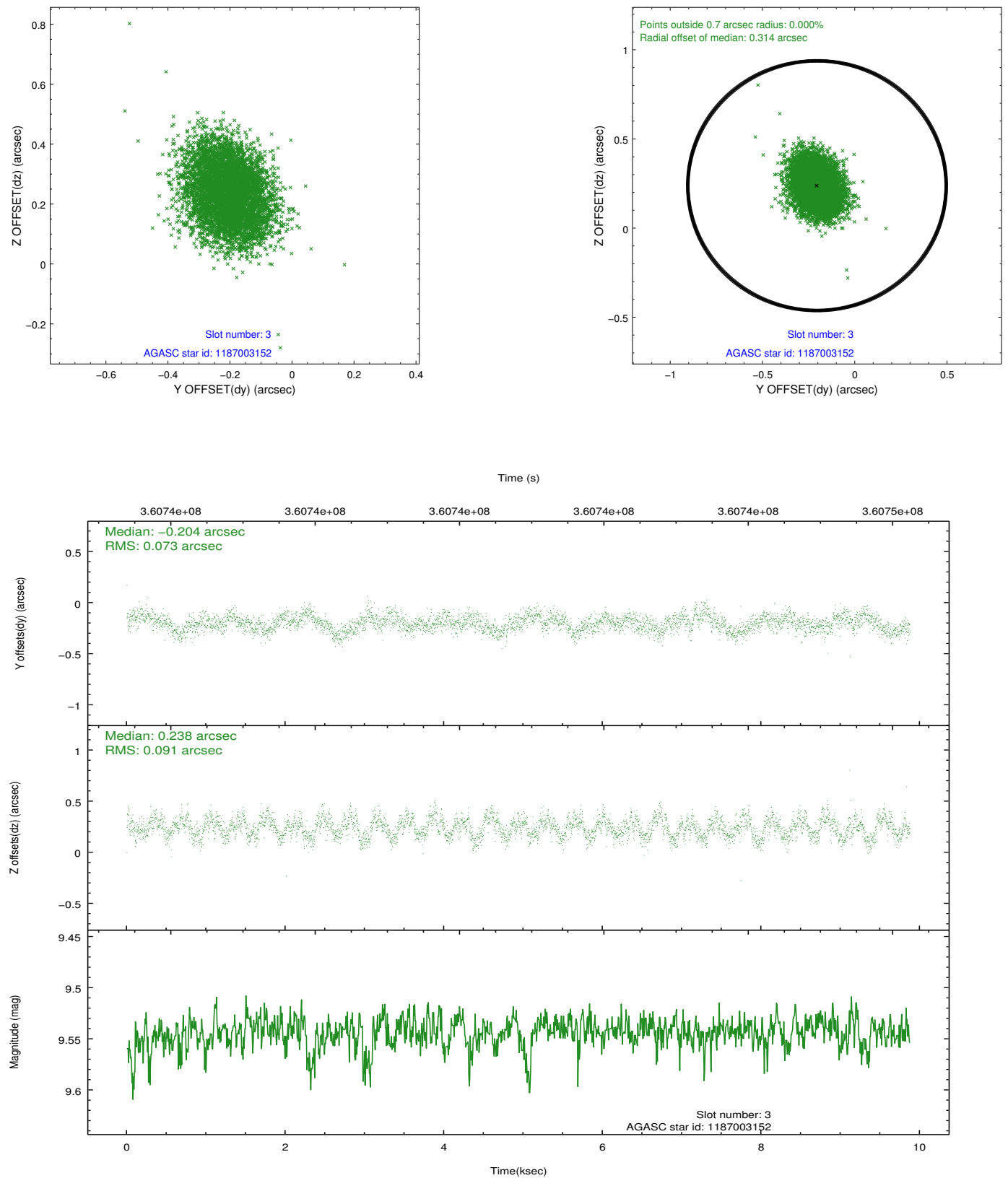


### Slot Statistics

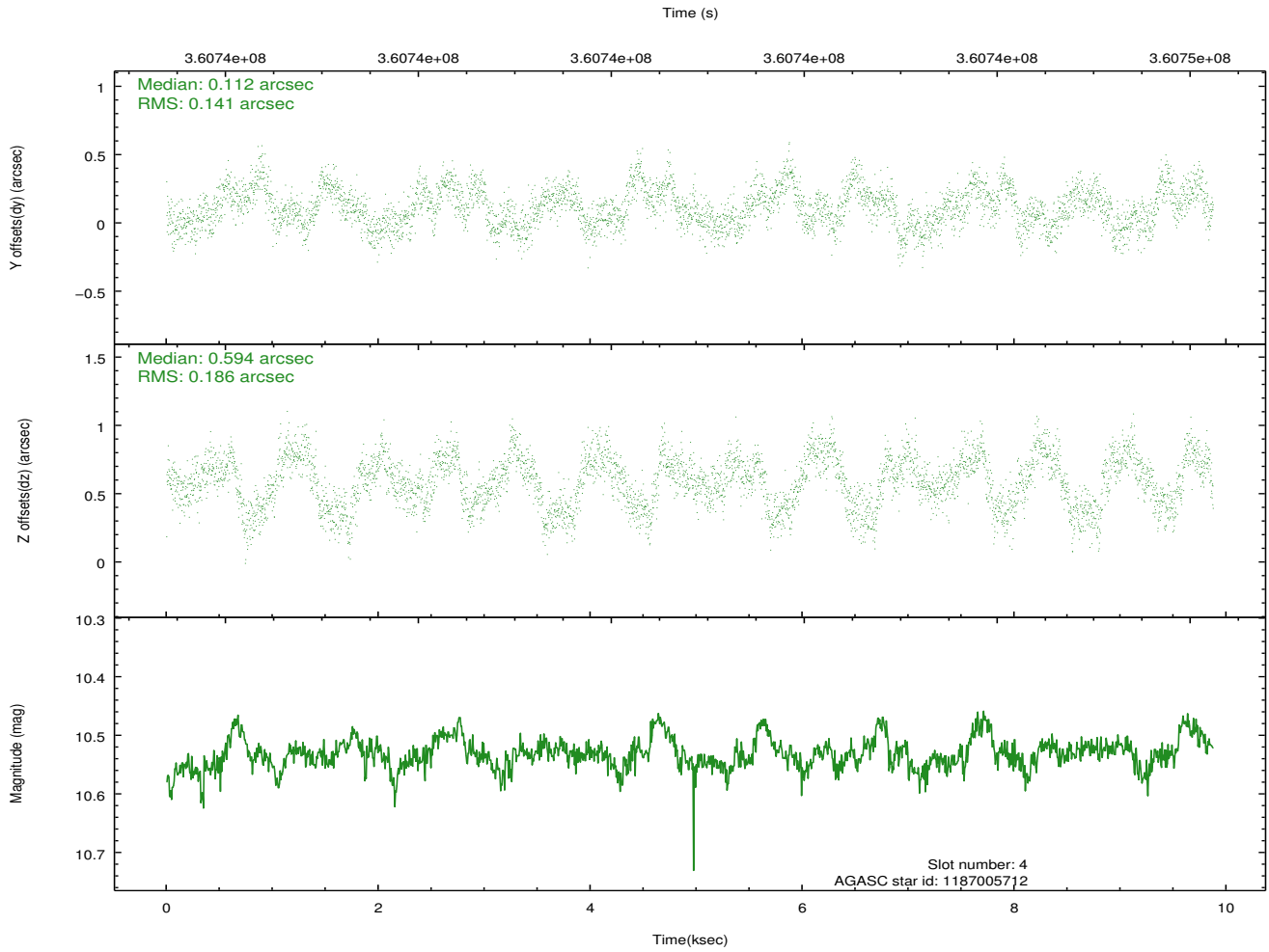
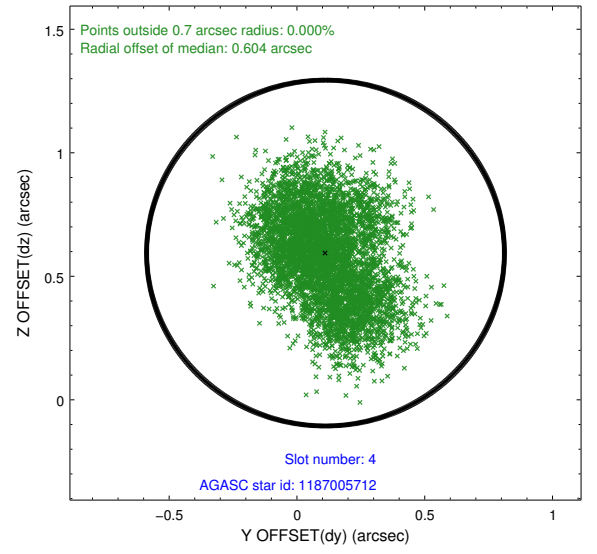
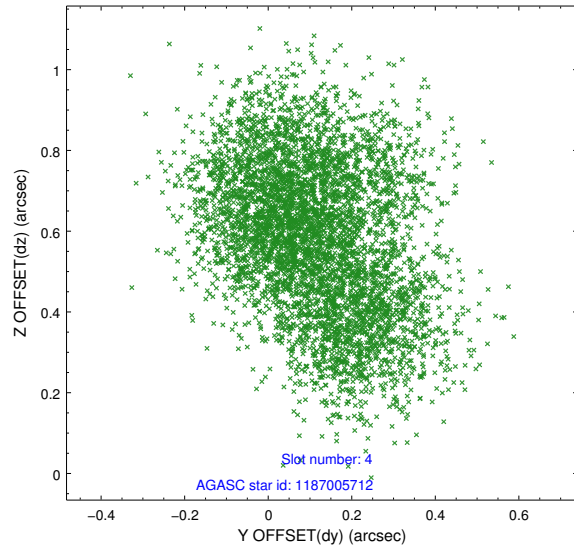
slot	status	id	mag	n_pts	med_dy	med_dz	dr1	dr2	ra	dec	mean_y	mean_z
0	FID	ACIS-S-2	6.98	2409	-0.024	-0.054	0.006	0.011	0.000000	0.000000	-765.33	-1734.73
1	FID	ACIS-S-4	7.07	2409	0.142	0.026	0.006	0.011	0.000000	0.000000	2147.87	173.27
2	FID	ACIS-S-5	7.11	2409	-0.149	0.037	0.007	0.012	0.000000	0.000000	-1817.60	167.57
3	GUIDE	1187003152	9.54	4811	-0.204	0.238	0.124	0.195	259.688405	-63.307332	604.35	-1775.21
4	GUIDE	1187005712	10.53	4809	0.112	0.594	0.255	0.394	258.429980	-63.298362	-1418.02	-1547.07
5	GUIDE	1187015832	8.18	4814	-0.117	-0.204	0.114	0.176	260.132419	-62.192136	1771.12	2134.54
6	GUIDE	1187015888	10.03	4809	0.110	0.140	0.211	0.342	257.825503	-62.822896	-2260.15	240.04
7	GUIDE	1187006144	10.30	4809	0.104	-0.774	0.162	0.261	258.352232	-63.327424	-1552.87	-1641.45

## 2.4 Star Slots

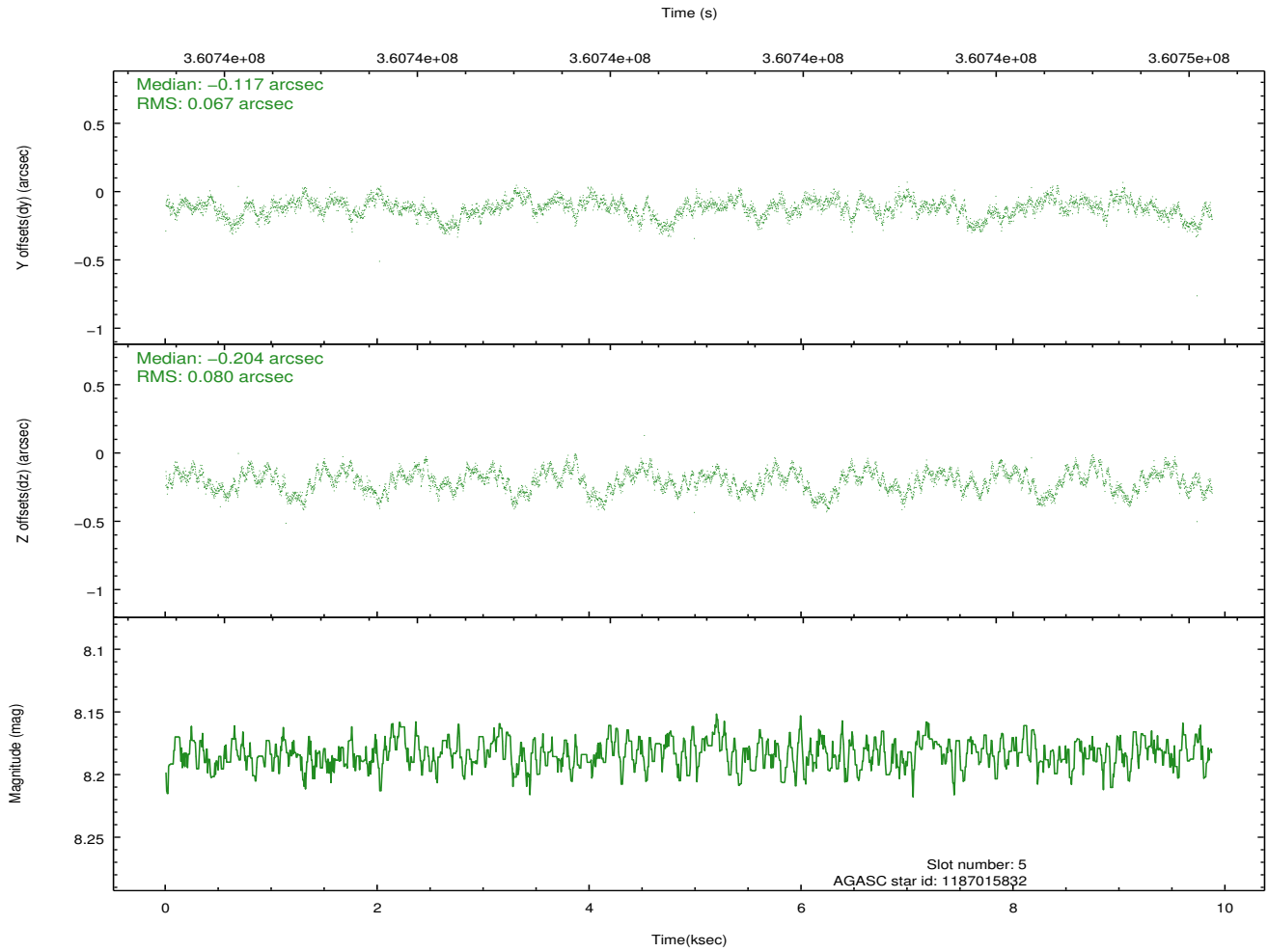
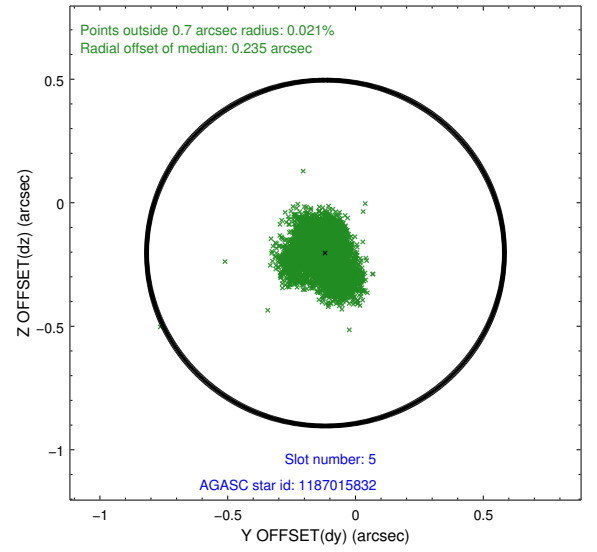
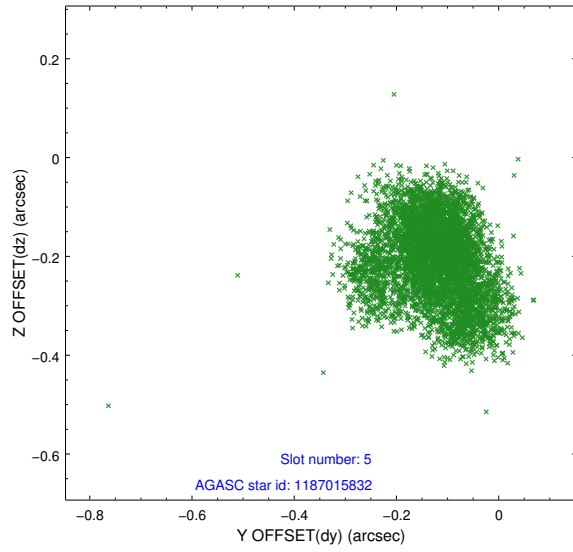
### 2.4.1 Slot 3



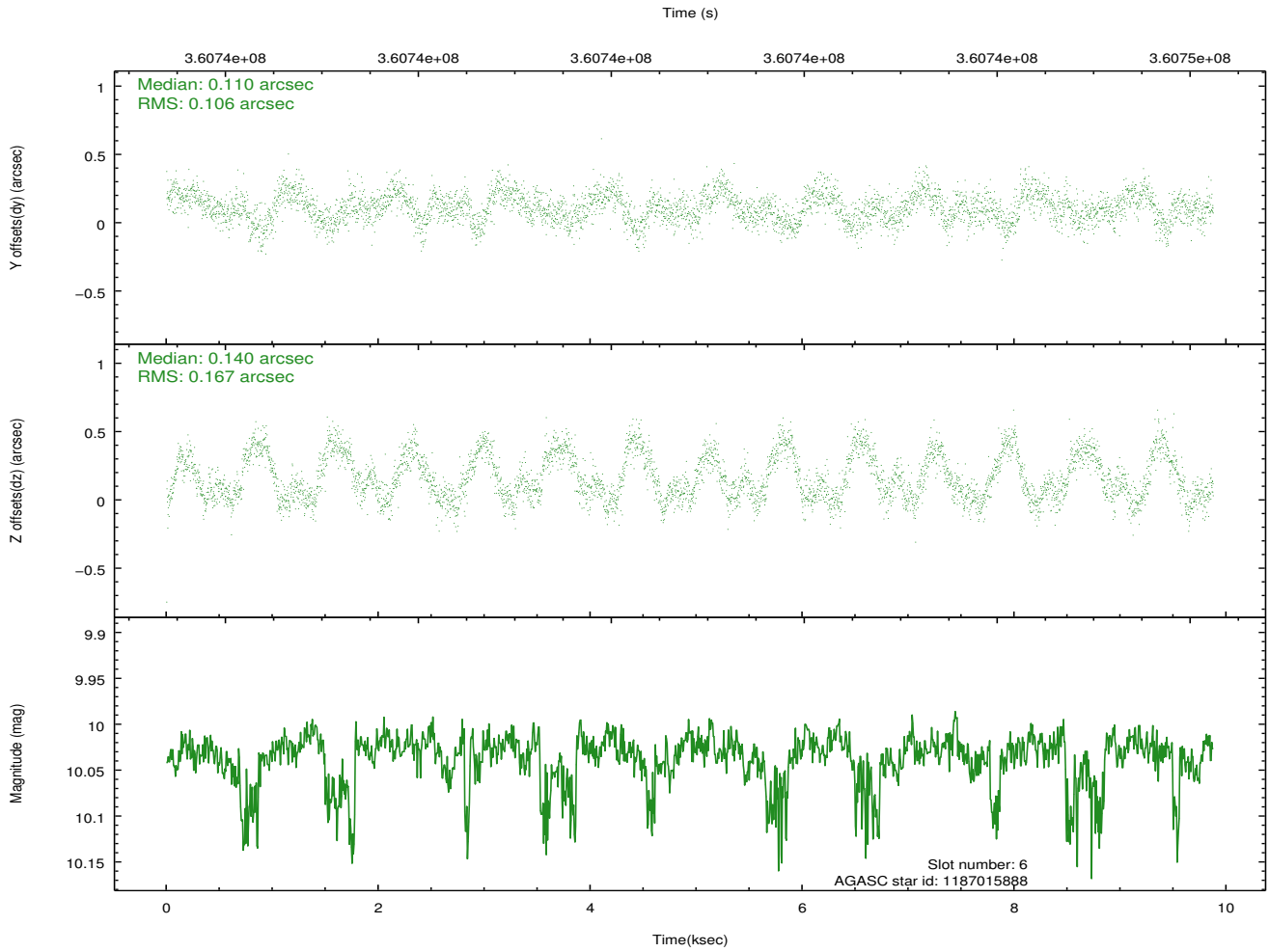
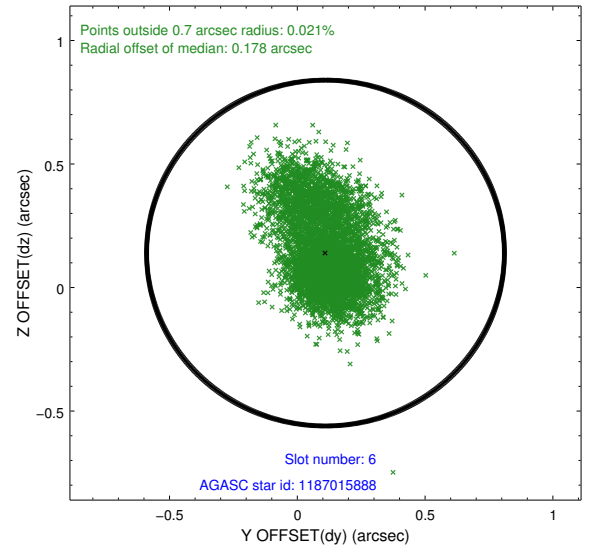
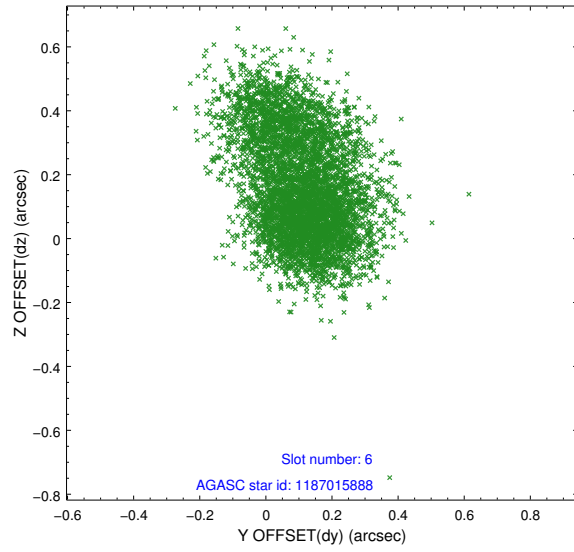
## 2.4.2 Slot 4



### 2.4.3 Slot 5

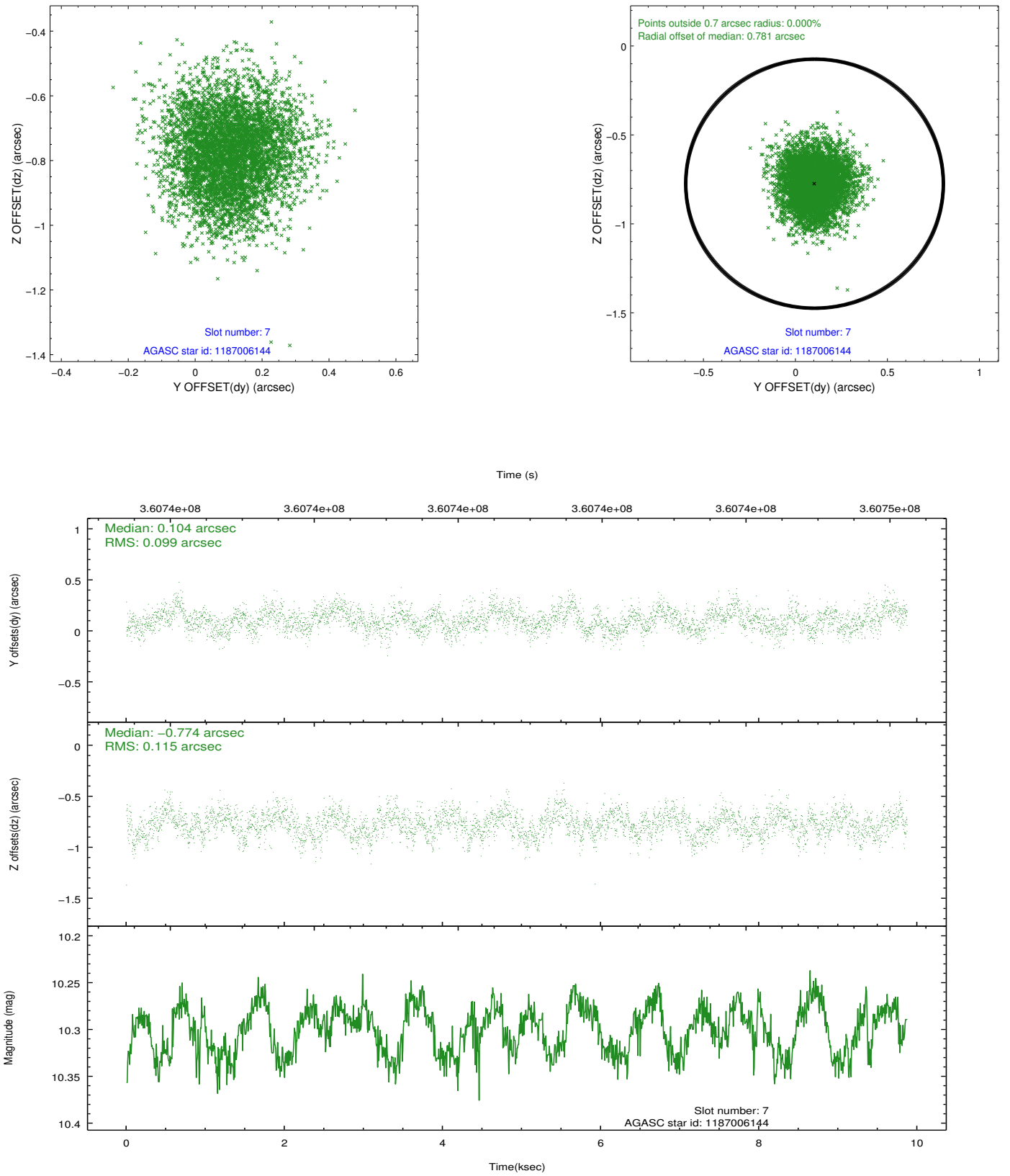


## 2.4.4 Slot 6



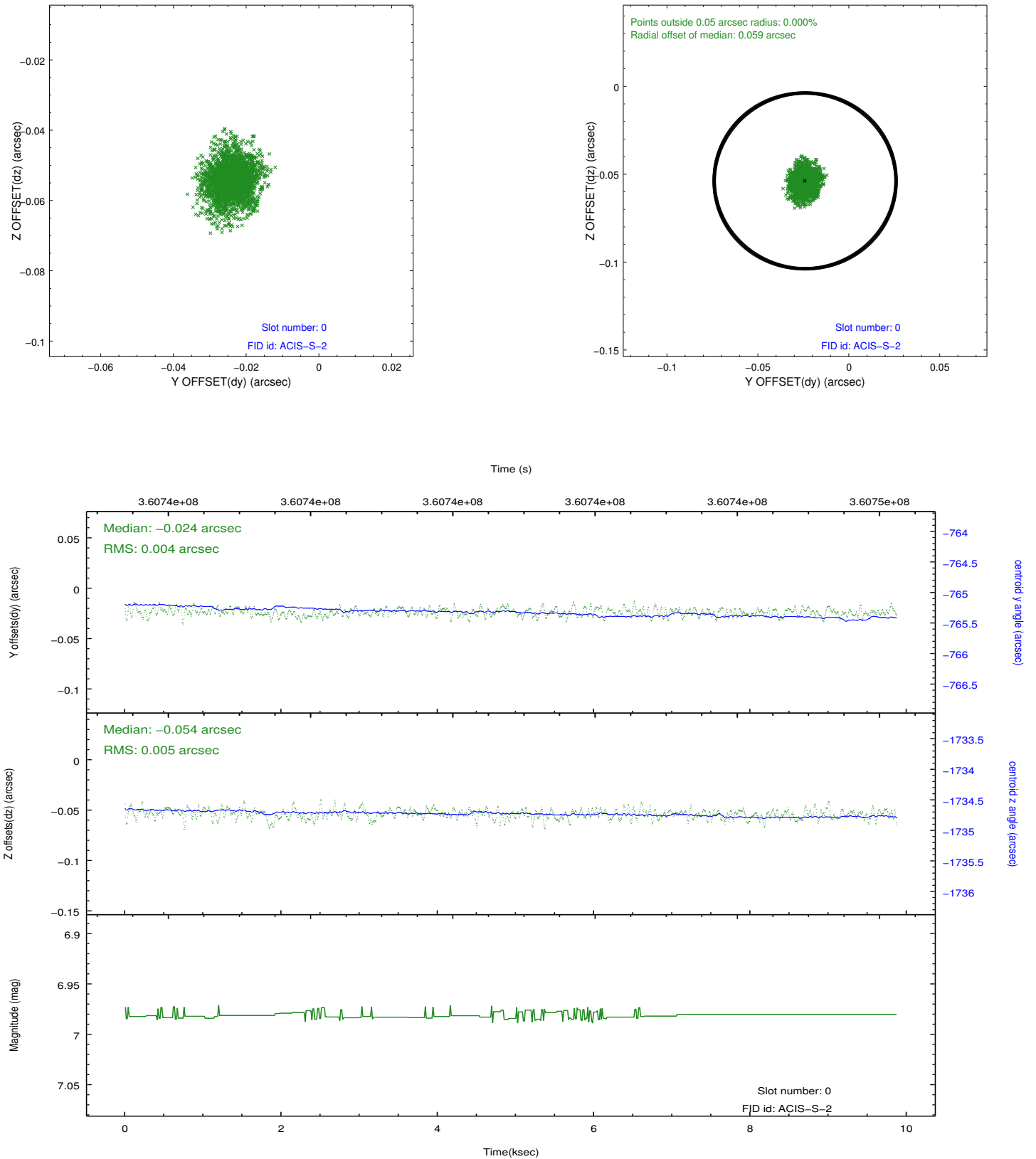


## 2.4.5 Slot 7

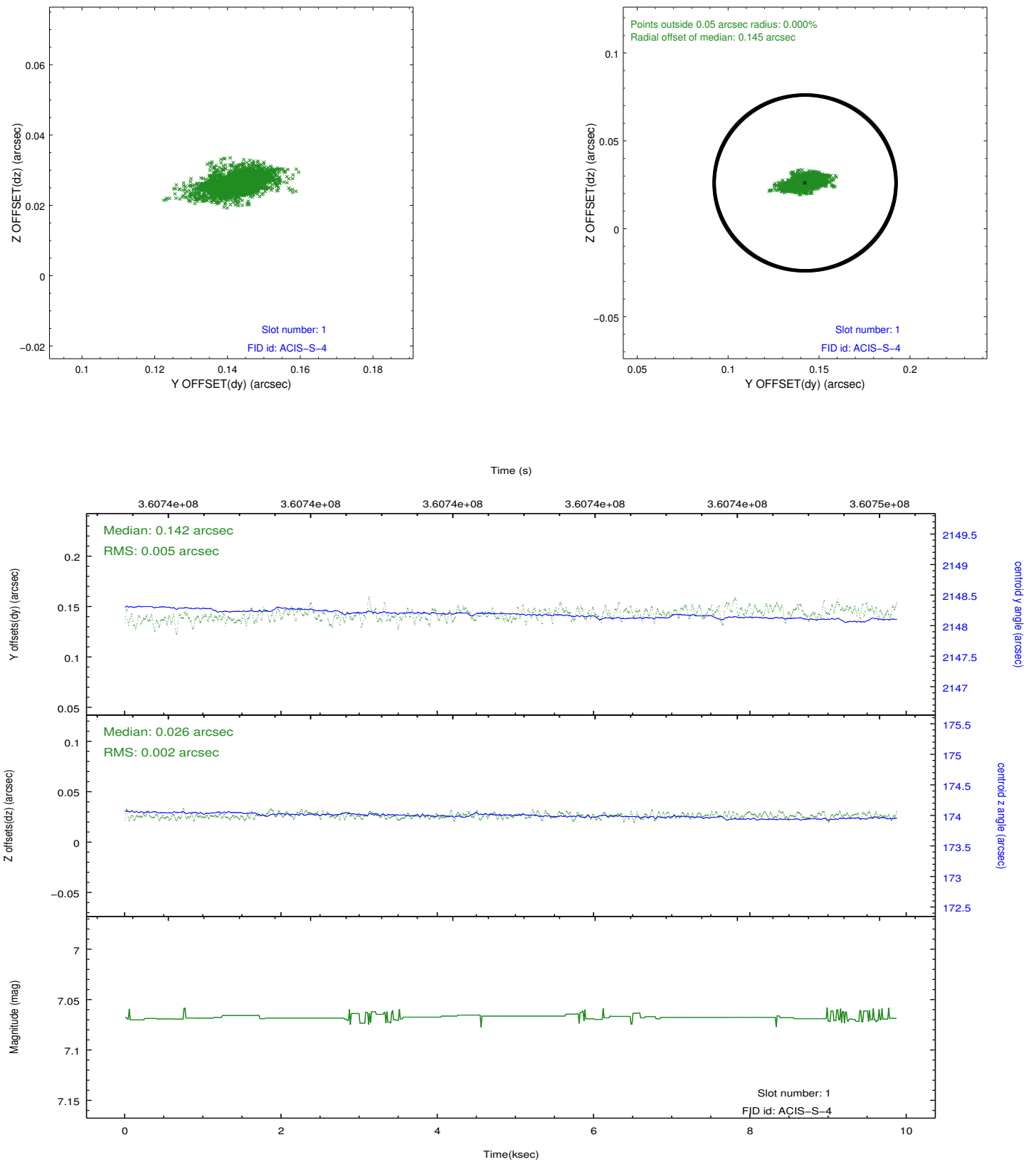


## 2.5 FID Slots

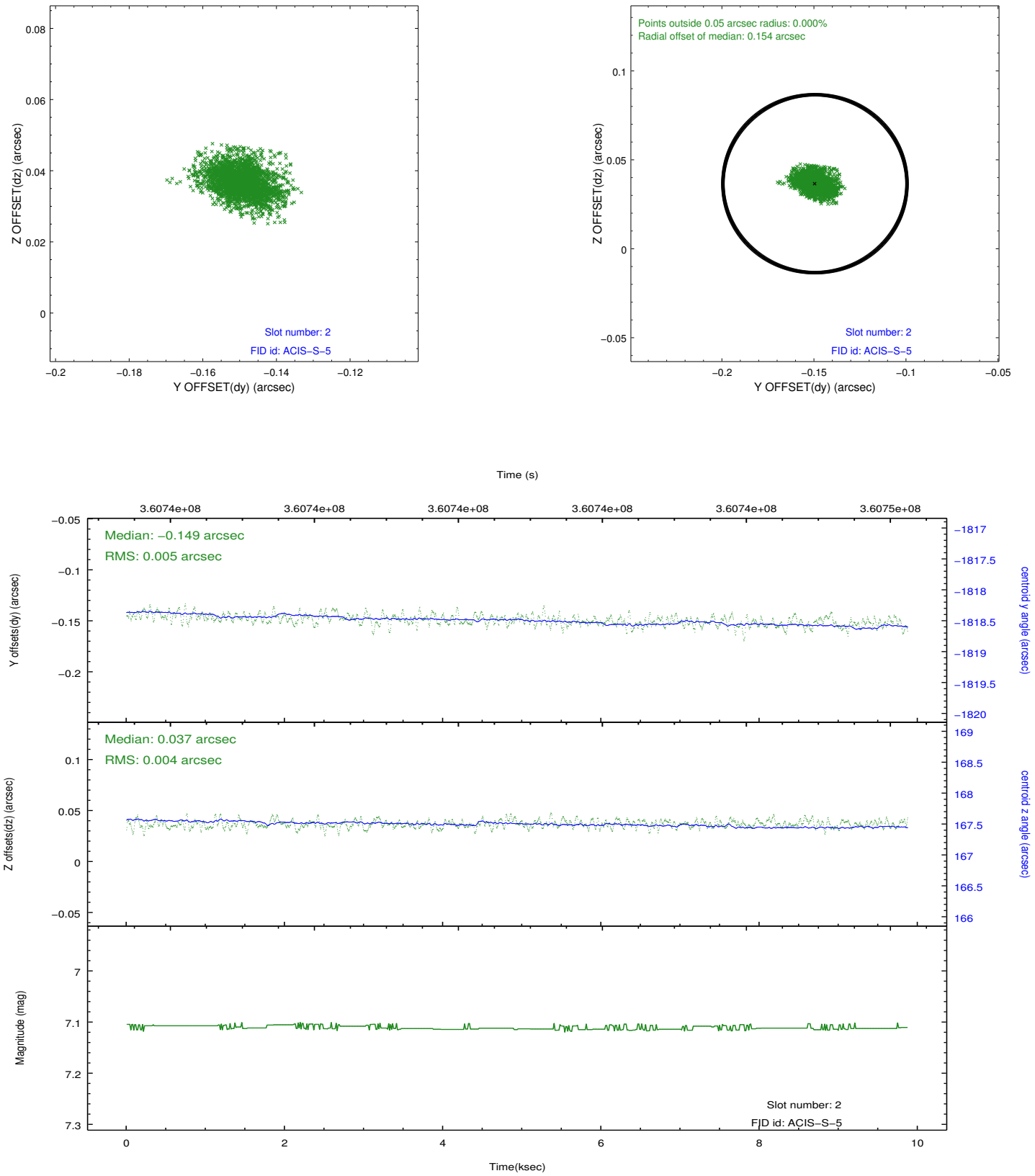
### 2.5.1 Slot 0



## 2.5.2 Slot 1



### 2.5.3 Slot 2



## A Summary

### A.1 Status

V&V Scientist	Jen Lauer
V&V Date (YYYY-MM-DD)	2012.06.11
V&V Edition	1
V&V Disposition and Status	OK
V&V Charge Time	9.828

### A.2 Comments