

V&V Reference Report

L2 ASCDS Version : 10.8.1

Observation 22586 - L2 Version 1
Chandra X-Ray Center

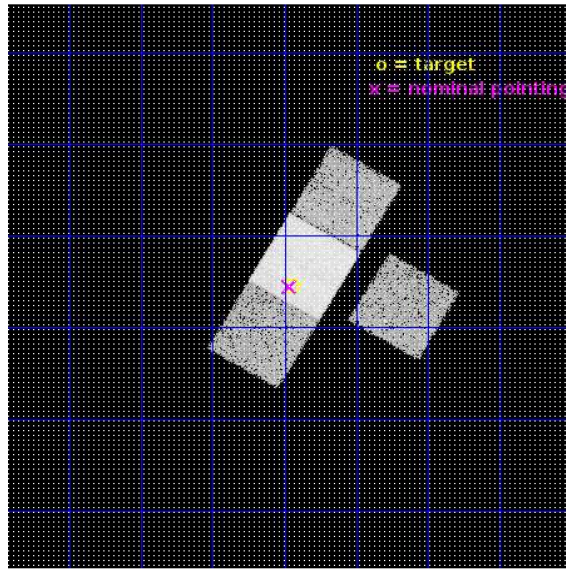
L2 Processing Date : Oct 30 2019

Contents

1	Front	2
2	OBI	3
2.1	OBI	3
2.1.1	Images	3
2.1.2	Bias	3
2.1.3	Parameters	4
2.1.4	Events	4
2.2	Compared Parameters	5
2.3	Aspect	6
2.4	Star Slots	9
2.4.1	Slot 3	9
2.4.2	Slot 4	10
2.4.3	Slot 6	11
2.4.4	Slot 7	12
2.5	FID Slots	13
2.5.1	Slot 0	13
2.5.2	Slot 1	14
2.5.3	Slot 2	15
A	Summary	16
A.1	Status	16
A.2	Comments	16

1 Front

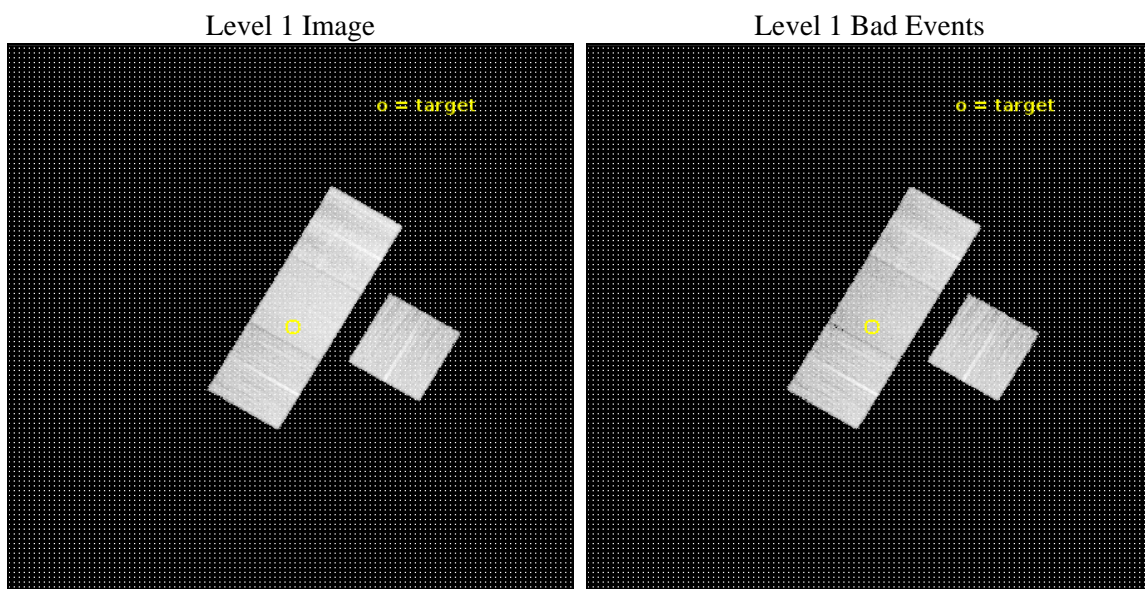
seq_num	703972	Sequence number
obs_id	22586	Observation id
title	An X-ray survey of the most luminous z=5-6 quasars	Proposal title
observer	Jiang-Tao Li	Principal investigator
object	J002526.84-014532.51	Source name
dtcycle	0	
cycle	P	events from which exps? Prim/Second/Both
ra_targ	6.361667	Observer's specified target RA [deg]
dec_targ	-1.759028	Observer's specified target Dec [deg]
ra_nom	6.3662572427597	Nominal RA [deg]
dec_nom	-1.7591934916234	Nominal Dec [deg]
roll_nom	300.36130250371	Nominal Roll [deg]
revision	1	Processing version of data
ontime	14768.400113702	Sum of GTIs [s]
livetime	14575.440093878	Livetime [s]
ontime3	14768.400113702	Sum of GTIs [s]
ontime6	14768.400113702	Sum of GTIs [s]
ontime7	14768.400113702	Sum of GTIs [s]
ontime8	14768.400113702	Sum of GTIs [s]
l2events	96489	Number of level 2 events



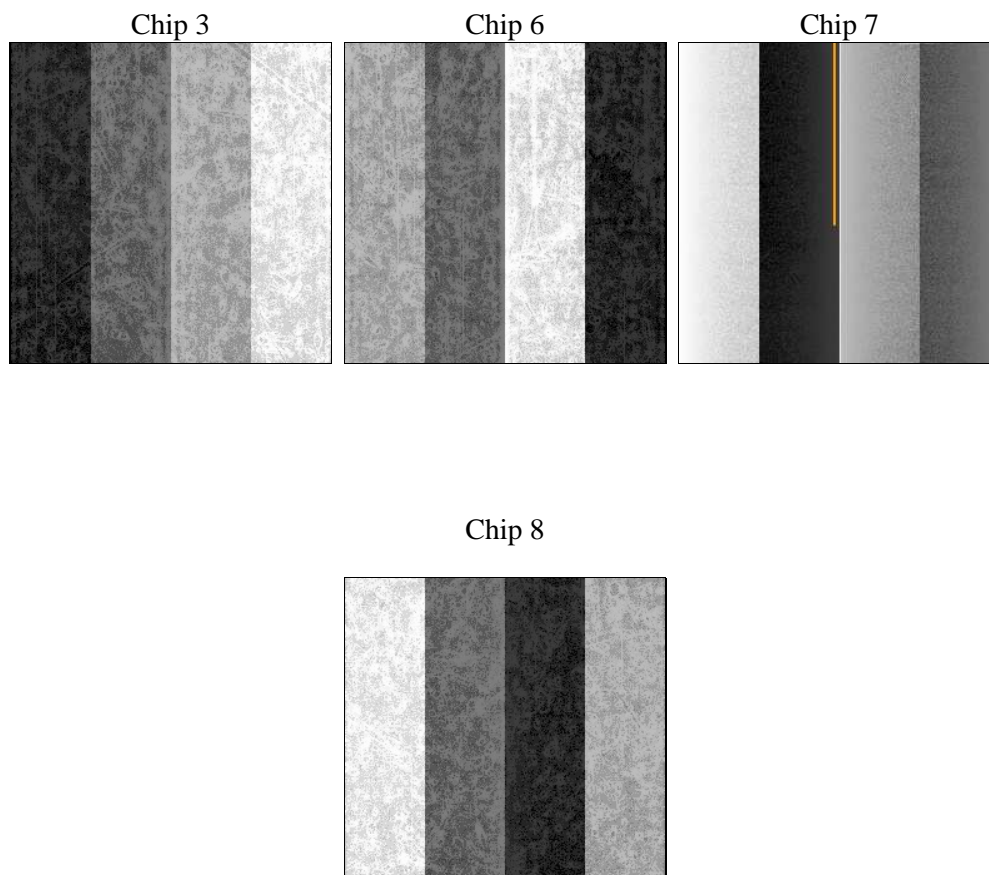
2 OBI

2.1 OBI

2.1.1 Images



2.1.2 Bias



2.1.3 Parameters

obi_num	0	Obi number	sched_exp_time	14700.000000	[s] Scheduled observation exposure time
ascdsver	10.8.1	Processing system revision	ontime	14768.400113702	Sum of GTIs [s]
caldsver	4.8.4.2	 	ontime3	14768.400113702	Sum of GTIs [s]
date	2019-10-30T20:48:56	Date and time of file creation	ontime6	14768.400113702	Sum of GTIs [s]
revision	1	Processing version of data	ontime7	14768.400113702	Sum of GTIs [s]
			ontime8	14768.400113702	Sum of GTIs [s]
			l1events	514826	Number of level 1 events

2.1.4 Events

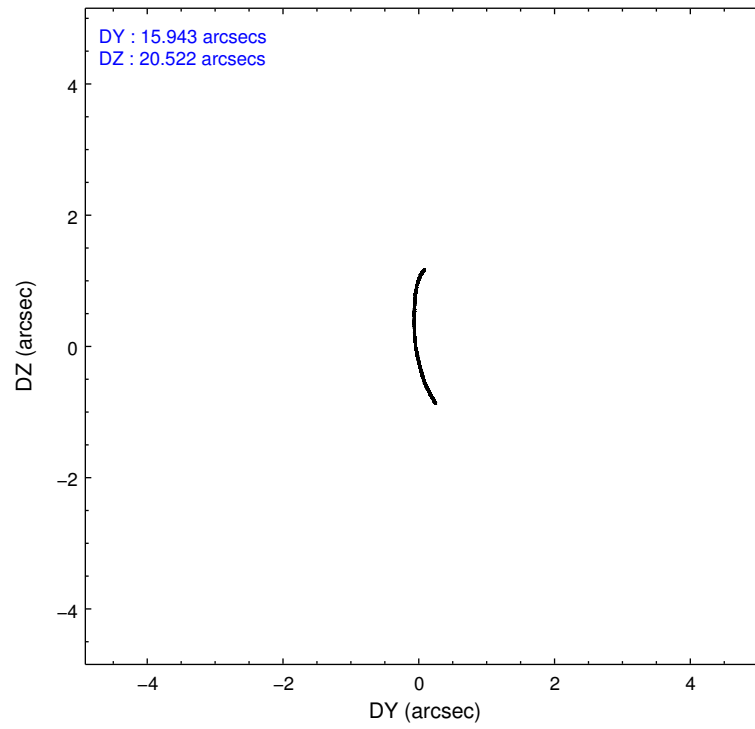
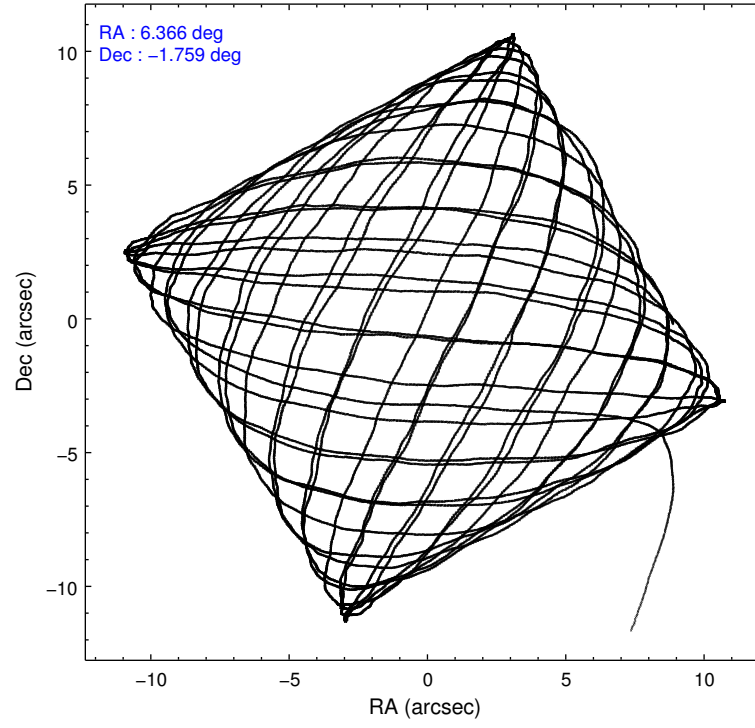
	ccd 3	ccd 6	ccd 7	ccd 8
level 1 events	107849	112571	144794	149612
rejected events	96302	99751	81830	108975
rejected %	89%	88%	56%	72%

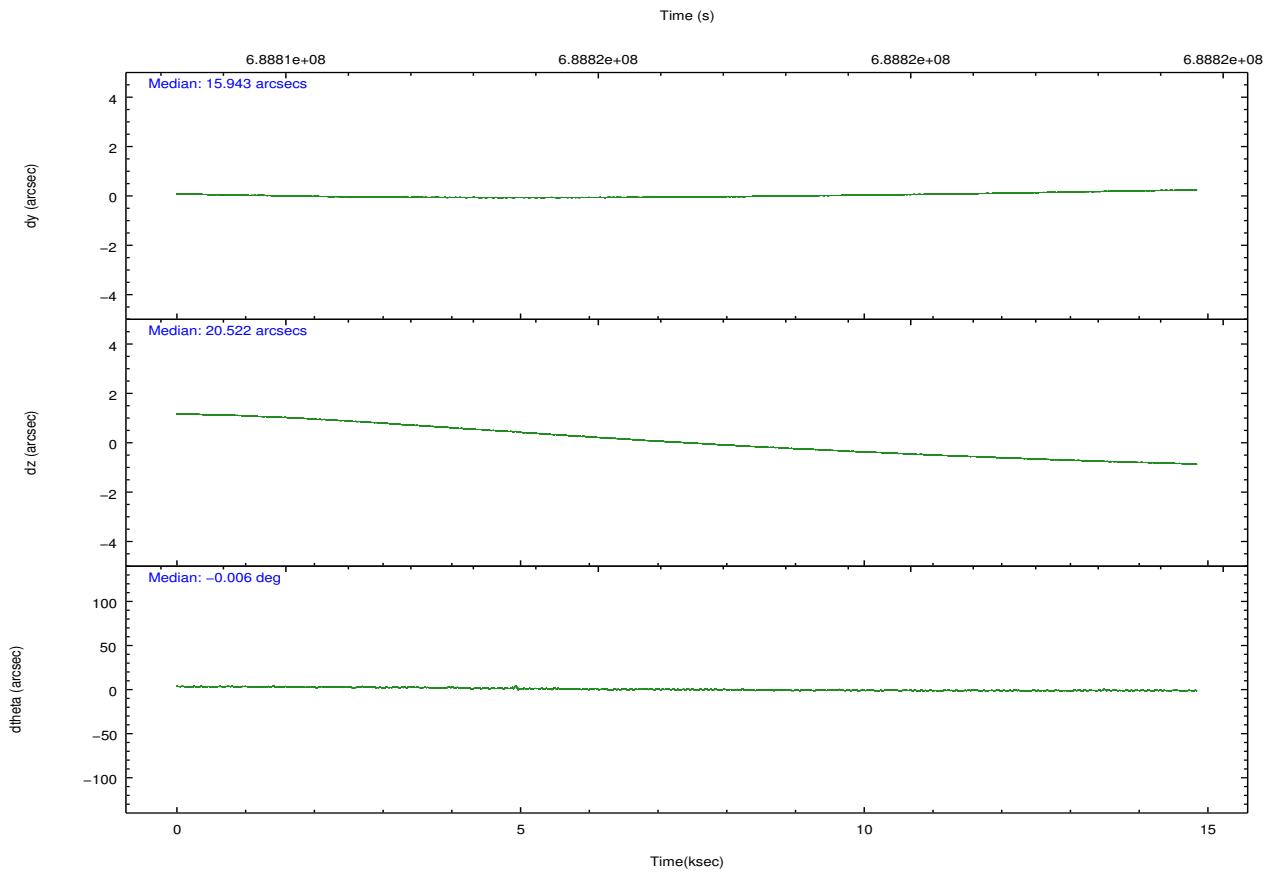
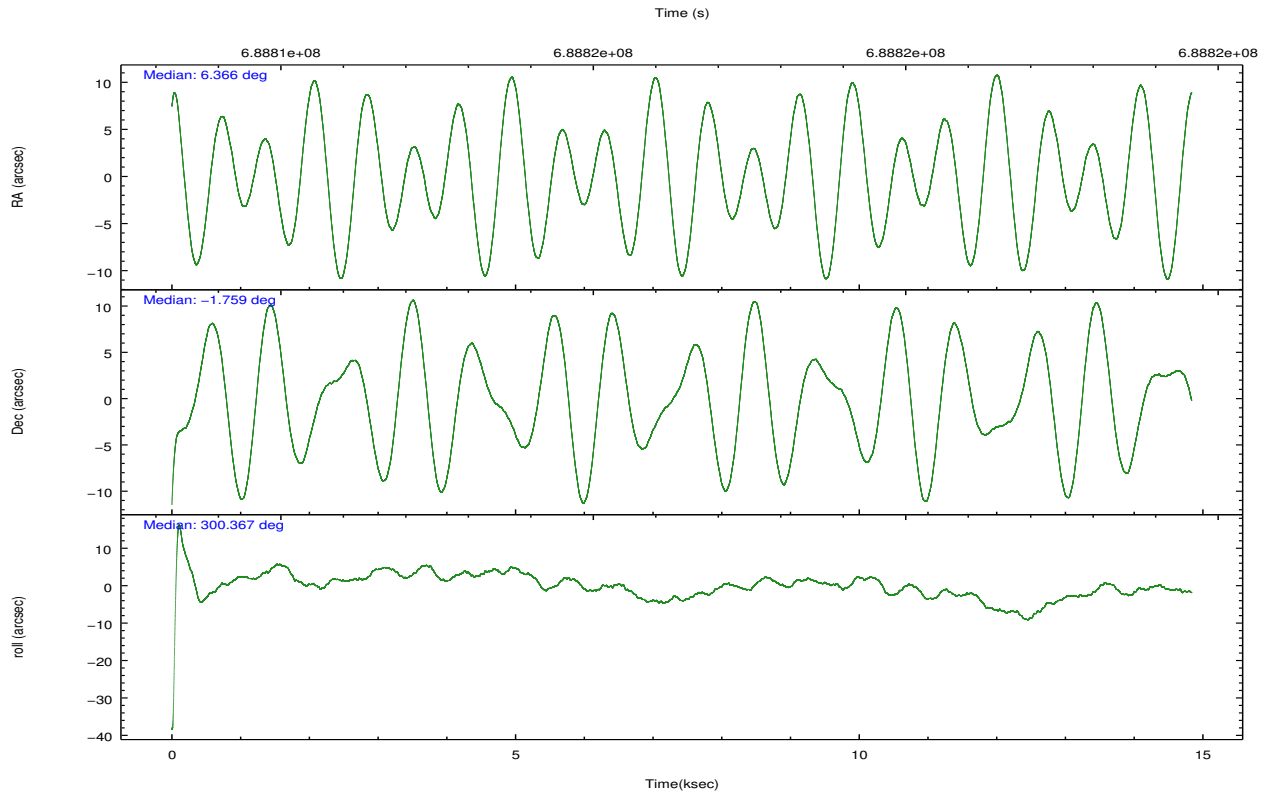
	ccd 3	ccd 6	ccd 7	ccd 8
grade 0 events	4183	4168	5223	11546
	3%	3%	3%	7%
grade 1 events	63	52	218	121
	0%	0%	0%	0%
grade 2 events	2535	3109	13454	9828
	2%	2%	9%	6%
grade 3 events	1241	1220	4939	4163
	1%	1%	3%	2%
grade 4 events	1170	1201	4828	3960
	1%	1%	3%	2%
grade 5 events	5285	5274	14399	8029
	4%	4%	9%	5%
grade 6 events	2421	3125	34533	11142
	2%	2%	23%	7%
grade 7 events	90951	94422	67200	100823
	84%	83%	46%	67%

2.2 Compared Parameters

Parameter	Planned	Actual	Parameter	Planned	Actual
Instrument	ACIS	ACIS	Obspar format version number	7	7
Detector	ACIS-3678	ACIS-3678	Obspar file type	PREDICTED	ACTUAL
Grating	NONE	NONE	Obspar update status	NONE	UPDATED
Data mode	FAINT	FAINT	Number of optional ACIS chips dropped	0	0
Observation mode	POINTING	POINTING	On-chip summing requested	N	N
[deg] Pointing RA	6.342225	6.36625724275973	Subarray requested	NONE	NONE
[deg] Pointing Dec	-1.745951	-1.759193491623368	Alternating exposures requested	N	N
[deg] Pointing Roll	300.203989	300.3613025037102	[s] Primary exposure time	0.000000	3.1
[mm] SIM focus pos	-0.684267	-0.6828225247311905			
[mm] SIM defocus	0	0.001444936568705701			
[mm] SIM translation stage pos	-190.132523	-190.1400660498719			
[mm] SIM translation stage offset	0	0.00754346686406393			
[s] Observation start time (MET)	688809154.184000	688807888.44109			
Observation start date	2019-10-30T07:51:25	2019-10-30T07:31:28			
[s] Observation end time (MET)	688823854.184000	688824503.17959			
Observation end date	2019-10-30T11:56:25	2019-10-30T12:08:23			
Read mode	TIMED	TIMED			

2.3 Aspect



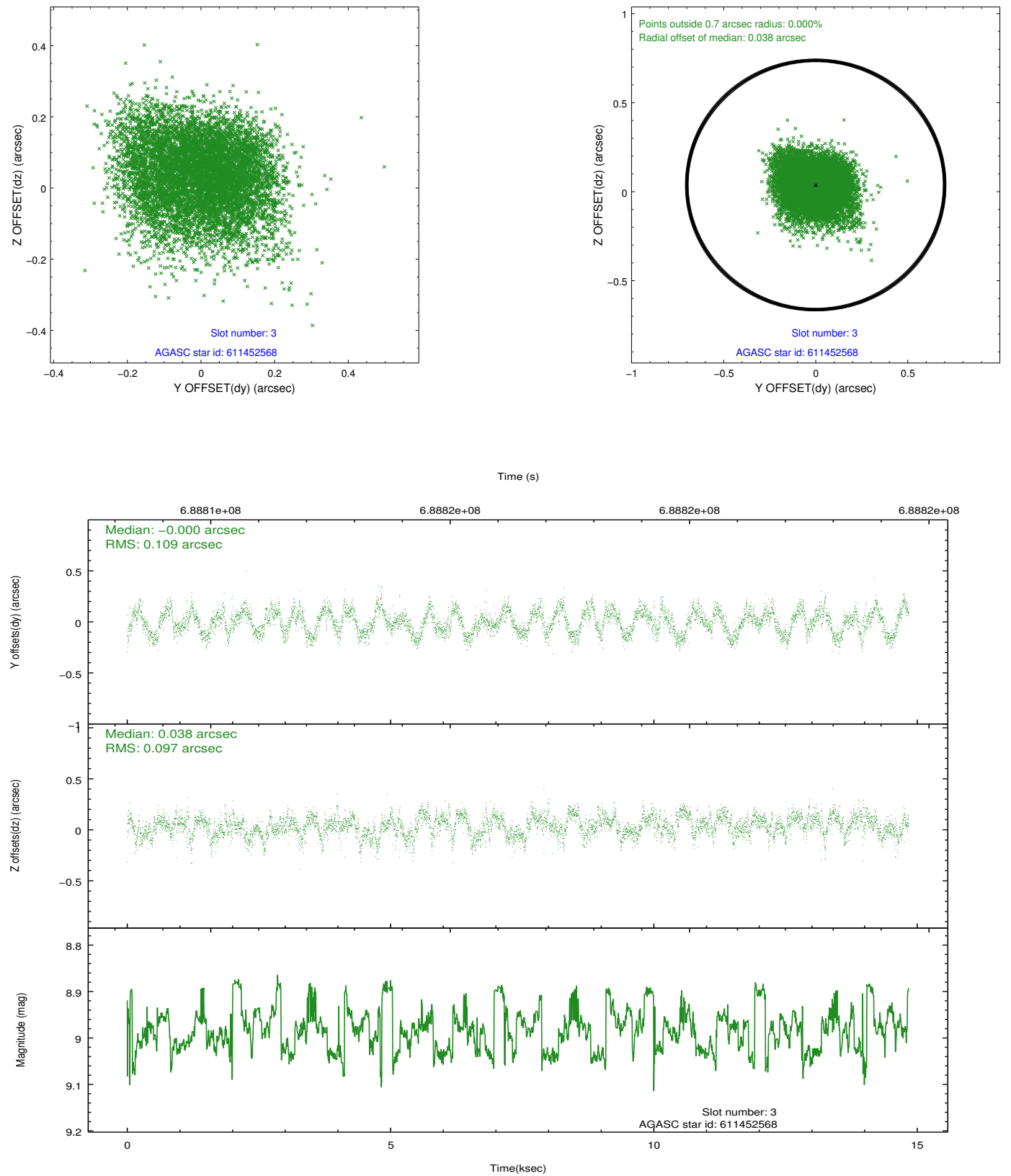


Slot Statistics

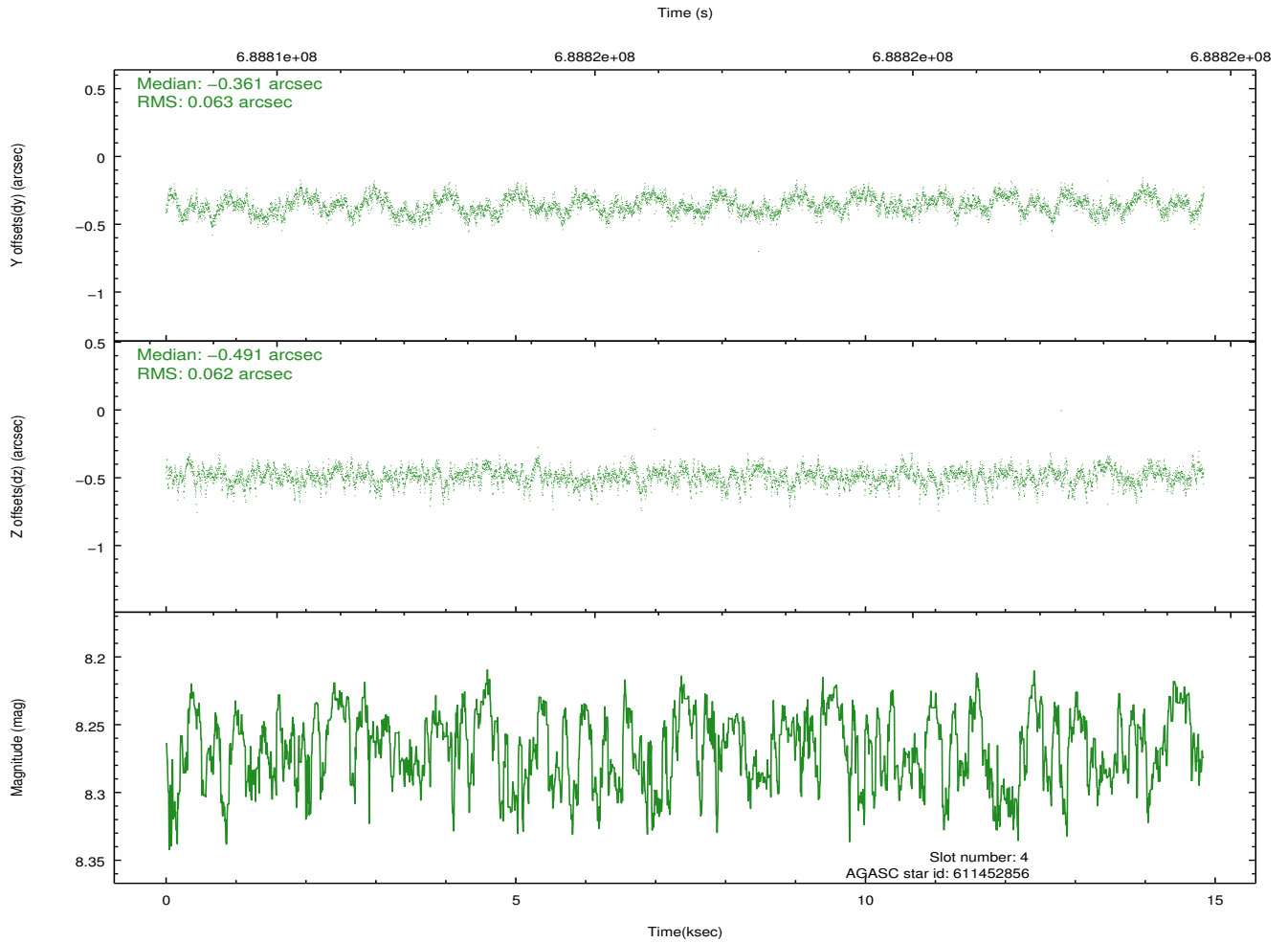
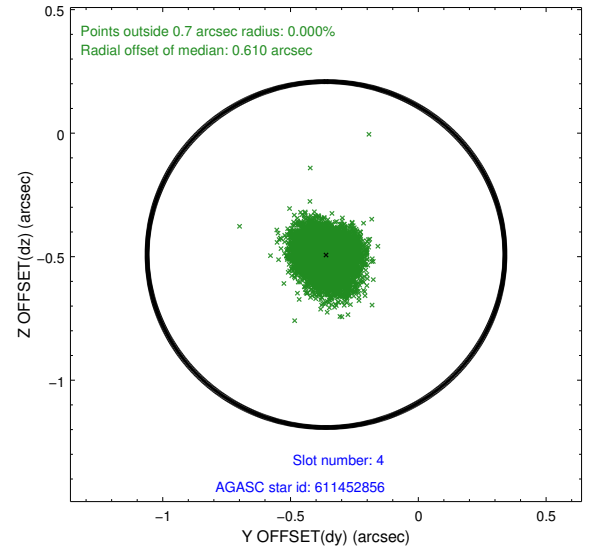
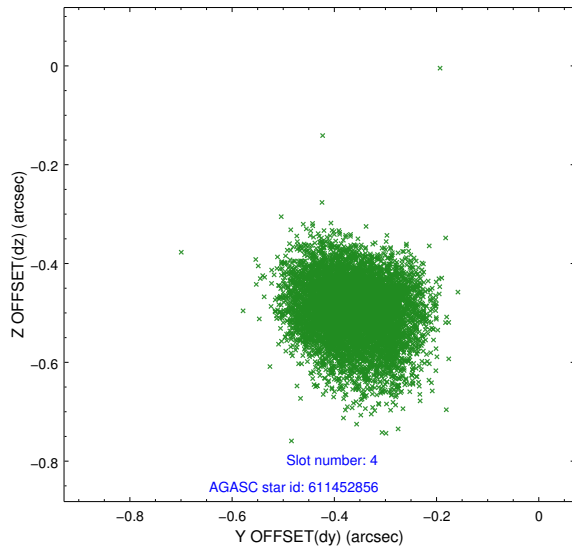
pt	status	used	id	mag	n_pts	frac_pts	med_dy	med_dz	dr1	dr2	ra	dec	mean_y	mea
0	FID		ACIS-S-2	7.07	3619	1.000	-0.306	-0.192	0.016	0.040	0.000000	0.000000	-769.21	-1742
1	FID		ACIS-S-4	7.20	3618	1.000	0.752	0.200	0.014	0.029	0.000000	0.000000	2144.92	166
2	FID		ACIS-S-5	7.15	3619	1.000	-0.473	0.001	0.019	0.036	0.000000	0.000000	-1821.89	160
3	GUIDE	used	611452568	8.98	7233	1.000	-0.000	0.038	0.159	0.245	6.308705	-1.833133	211.20	-262
4	GUIDE	used	611452856	8.27	7239	1.000	-0.361	-0.491	0.095	0.150	6.980386	-1.681637	956.22	2100
5	OMITTED			0.00	0	0.000	0.000	0.000	0.000	0.000	0.000000	0.000000	0.00	0
6	GUIDE	used	611458248	8.96	7227	1.000	0.333	0.461	0.160	0.251	5.827673	-1.559564	-1509.88	-1261
7	GUIDE	used	611458256	7.80	7234	1.000	0.048	0.012	0.128	0.213	6.076809	-1.241285	-2050.10	88

2.4 Star Slots

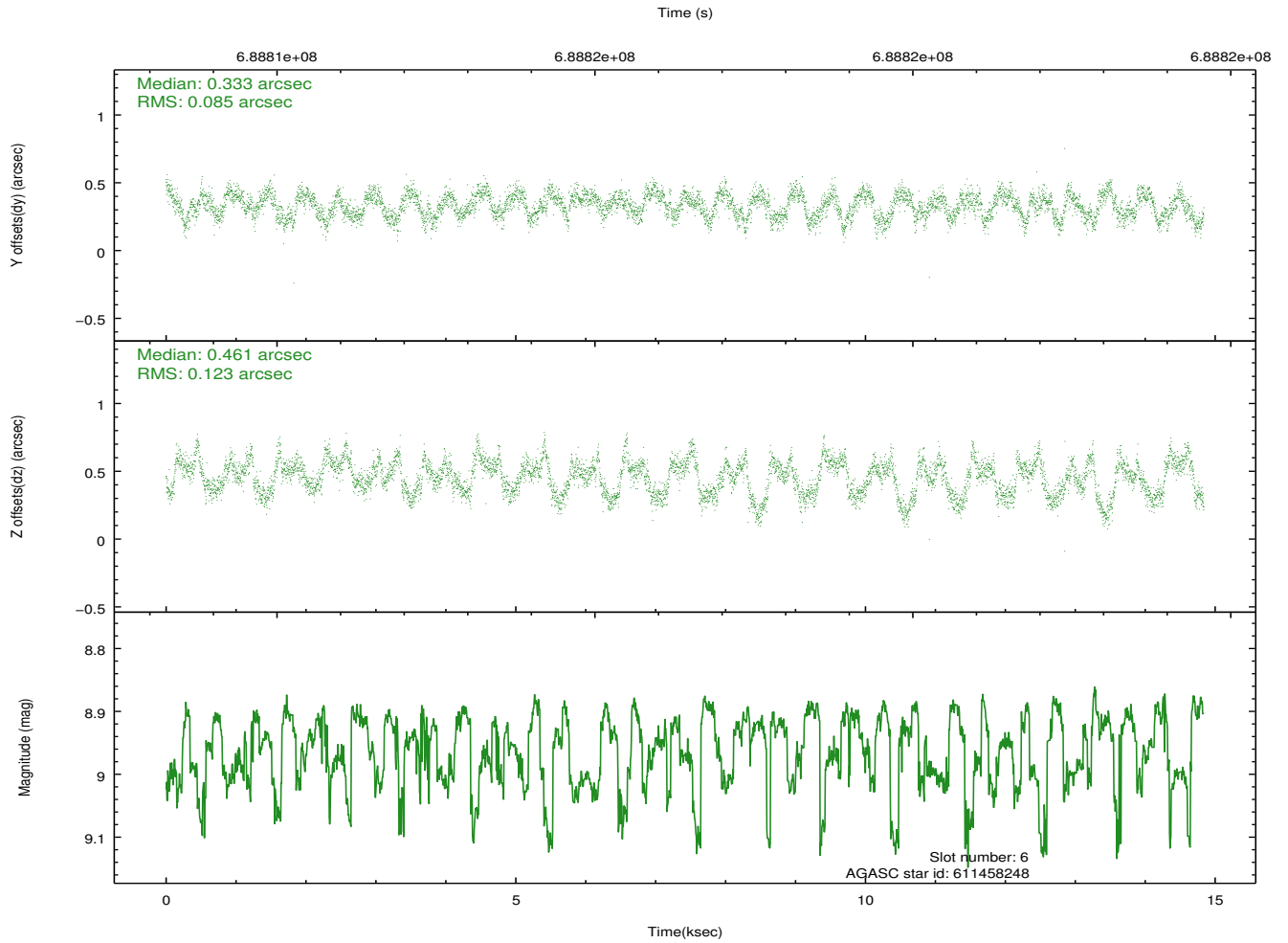
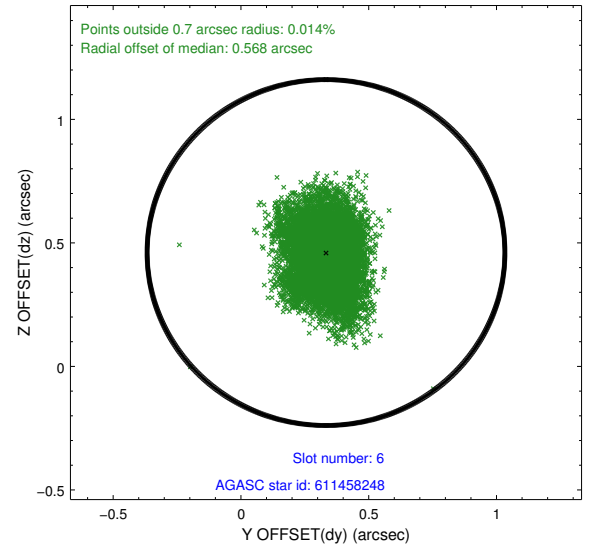
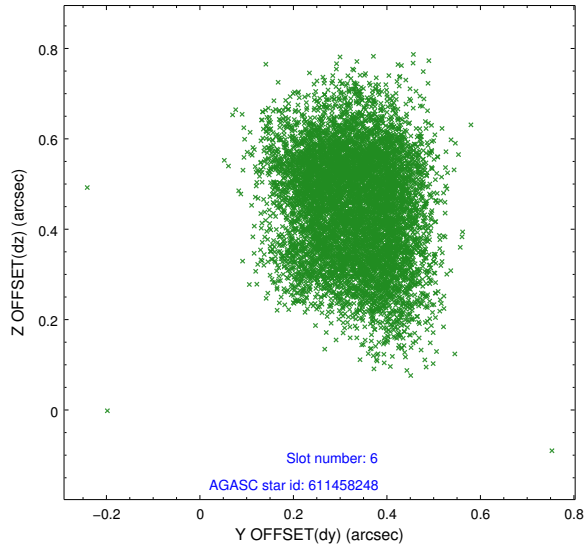
2.4.1 Slot 3



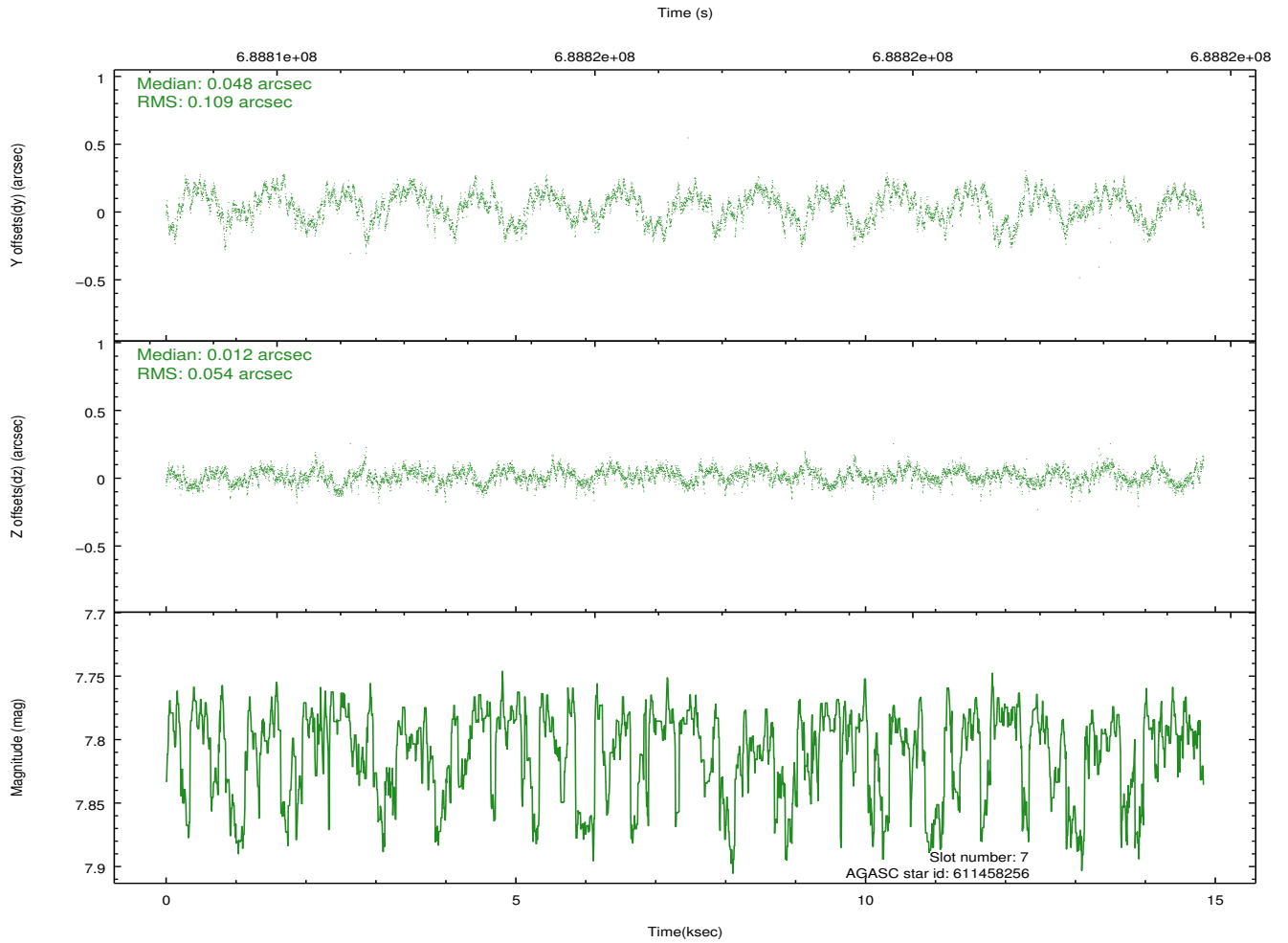
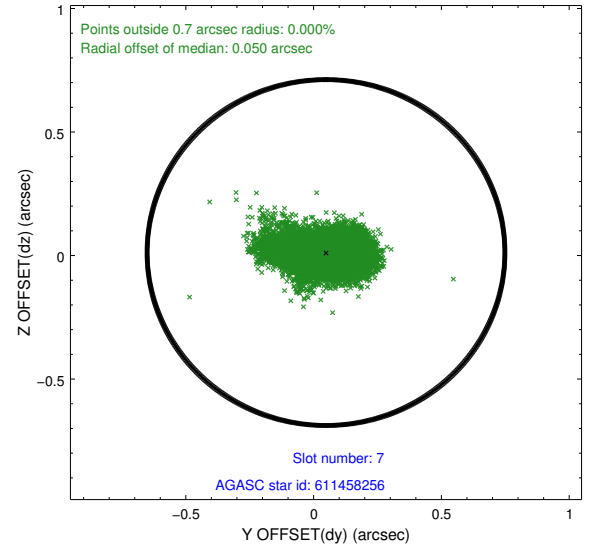
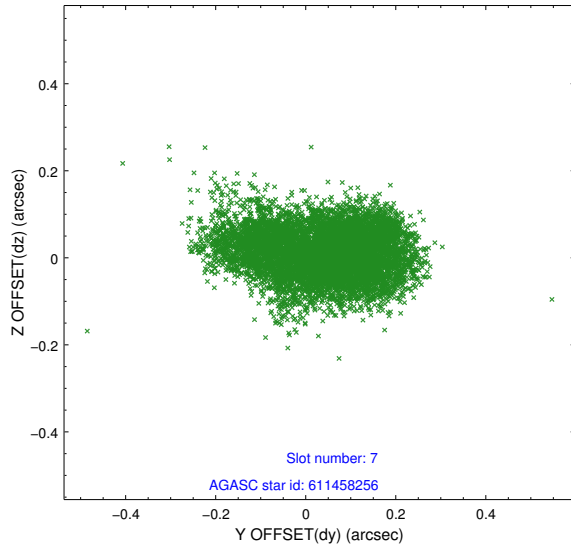
2.4.2 Slot 4



2.4.3 Slot 6

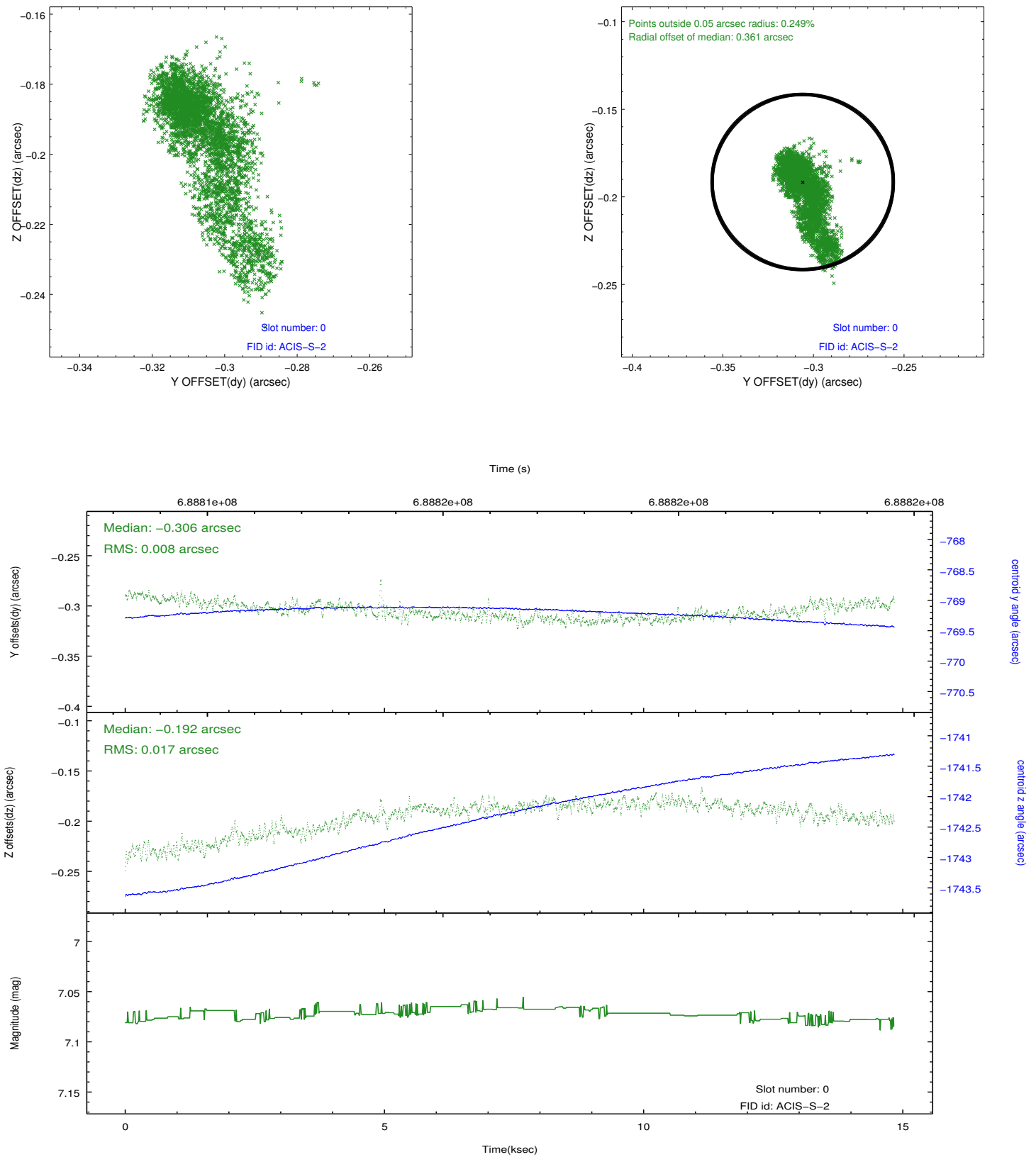


2.4.4 Slot 7

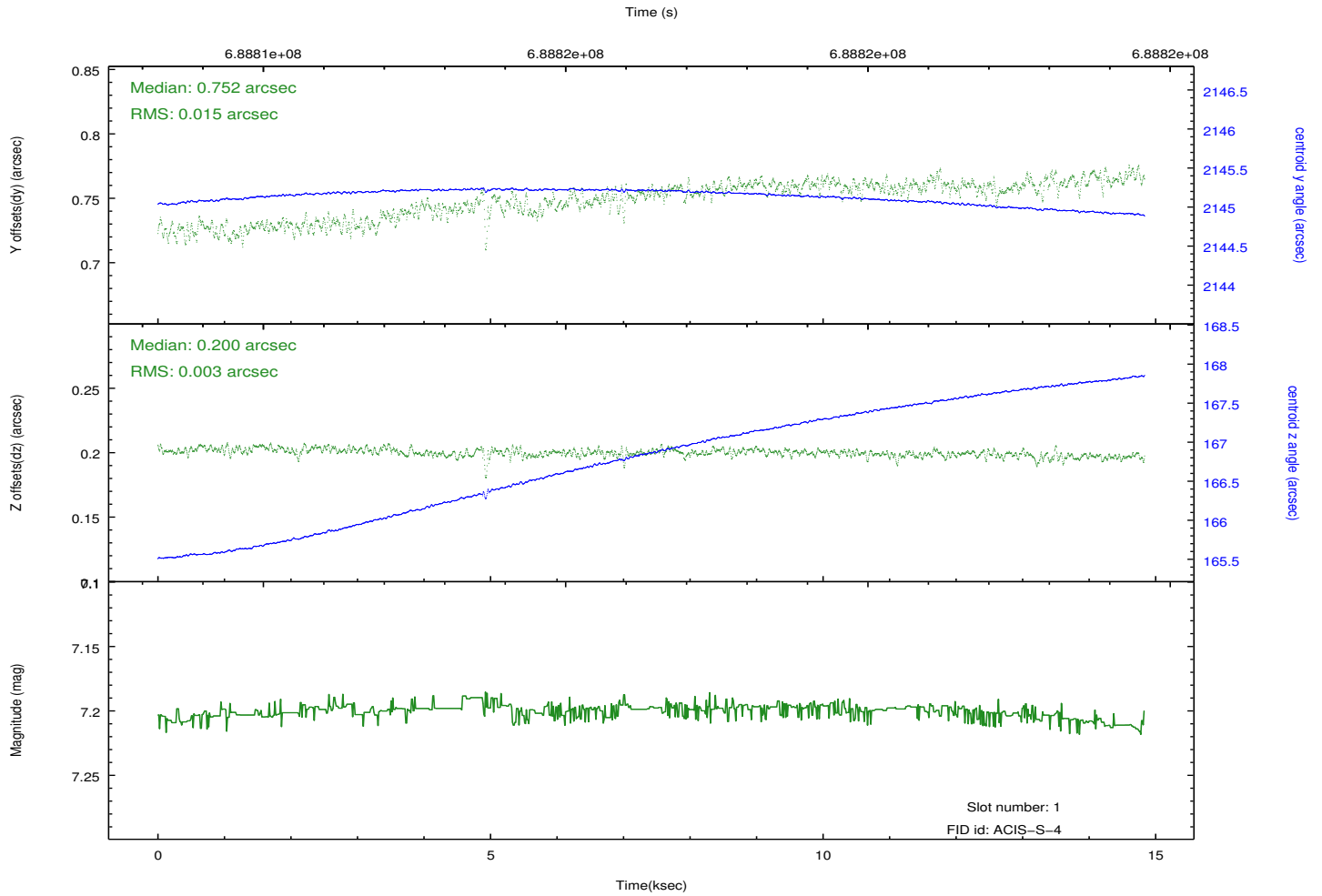
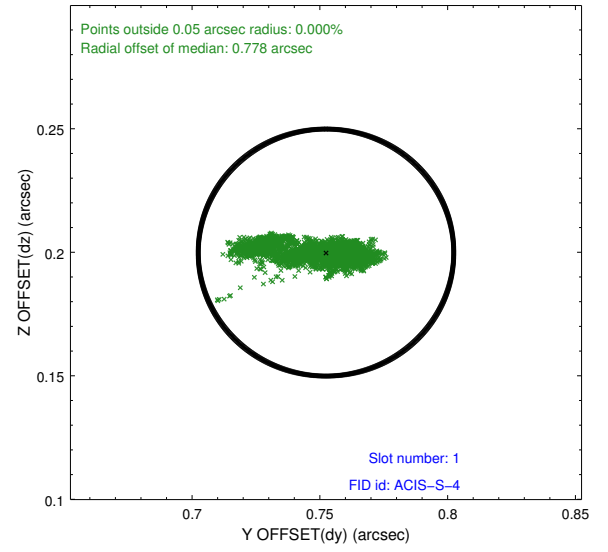
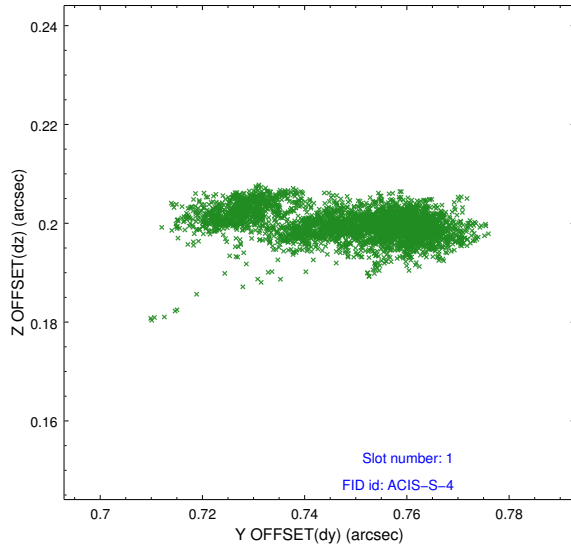


2.5 FID Slots

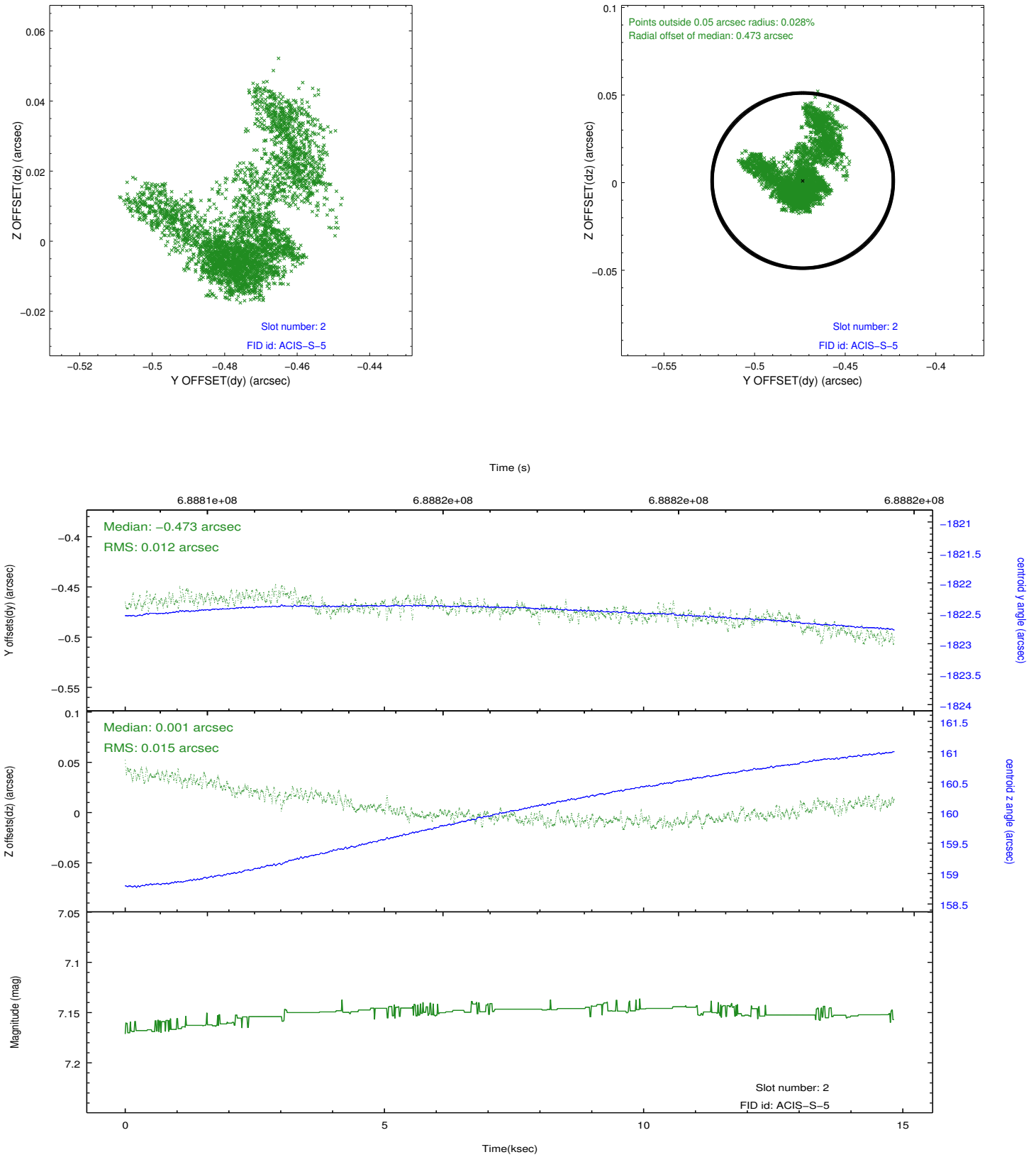
2.5.1 Slot 0



2.5.2 Slot 1



2.5.3 Slot 2



A Summary

A.1 Status

V&V Scientist	Beth Sundheim
V&V Date (YYYY-MM-DD)	2019.10.30
V&V Edition	1
V&V Disposition and Status	OK
V&V Charge Time	14.768400113702

A.2 Comments

The guide star in slot 5 was removed from the aspect solution due to poor data quality. The aspect solution is improved by the removal of this slot from the solution.