

V&V Reference Report

L2 ASCDS Version : 10.8.1

Observation 22562 - L2 Version 1
Chandra X-Ray Center

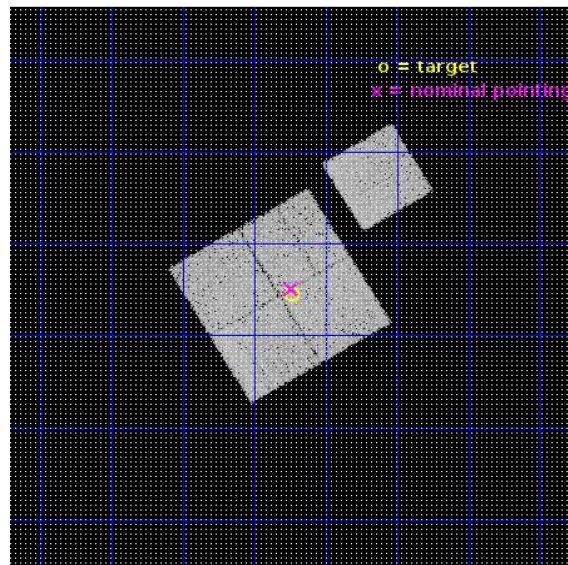
L2 Processing Date : Oct 9 2019

Contents

1	Front	2
2	OBI	3
2.1	OBI	3
2.1.1	Images	3
2.1.2	Bias	3
2.1.3	Parameters	4
2.1.4	Events	4
2.2	Compared Parameters	5
2.3	Aspect	6
2.4	Star Slots	9
2.4.1	Slot 3	9
2.4.2	Slot 4	10
2.4.3	Slot 5	11
2.4.4	Slot 6	12
2.4.5	Slot 7	13
2.5	FID Slots	14
2.5.1	Slot 0	14
2.5.2	Slot 1	15
2.5.3	Slot 2	16
A	Summary	17
A.1	Status	17
A.2	Comments	17

1 Front

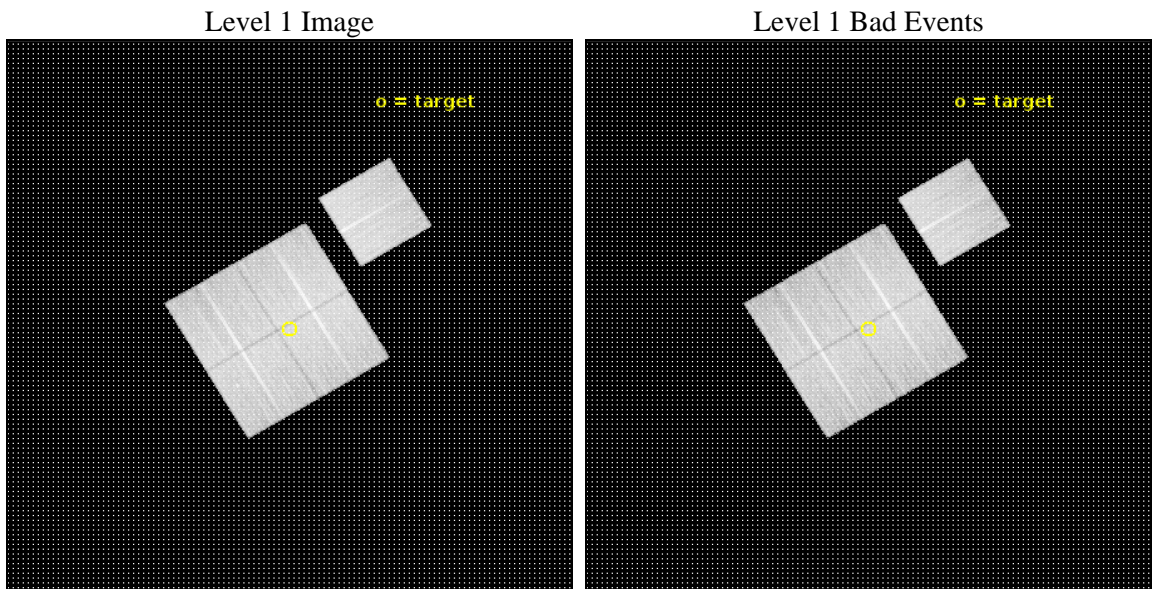
seq_num	703950	Sequence number
obs_id	22562	Observation id
title	Unveiling the AGN population in the highest redshift, mature, massive galaxy cluster	Proposal title
observer	Emil Noordeh	Principal investigator
object	XLSSC 122	Source name
dtcycle	0	
cycle	P	events from which exps? Prim/Second/Both
ra_targ	34.433	Observer's specified target RA [deg]
dec_targ	-3.759	Observer's specified target Dec [deg]
ra_nom	34.435034250425	Nominal RA [deg]
dec_nom	-3.7484481517056	Nominal Dec [deg]
roll_nom	59.208814977129	Nominal Roll [deg]
revision	1	Processing version of data
ontime	24009.327700019	Sum of GTIs [s]
livetime	23695.628158208	Livetime [s]
ontime0	24009.204640269	Sum of GTIs [s]
ontime1	24012.386710405	Sum of GTIs [s]
ontime2	24012.427750468	Sum of GTIs [s]
ontime3	24009.327700019	Sum of GTIs [s]
ontime6	24009.163529634	Sum of GTIs [s]
l2events	87765	Number of level 2 events



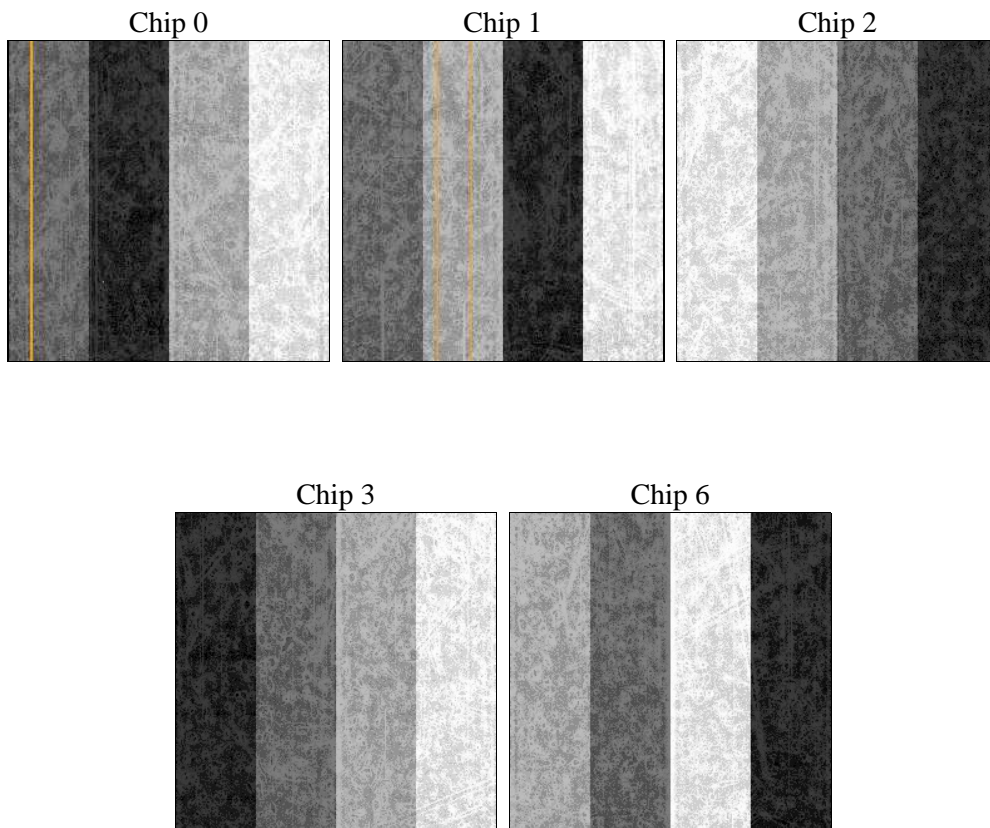
2 OBI

2.1 OBI

2.1.1 Images



2.1.2 Bias



2.1.3 Parameters

obi_num	0	Obi number	sched_exp_time	23946.000000	[s] Scheduled observation exposure time
ascdsver	10.8.1	Processing system revision	ontime	24009.327700019	Sum of GTIs [s]
caldsver	4.8.4.2	 	ontime0	24009.204640269	Sum of GTIs [s]
date	2019-10-09T13:40:24	Date and time of file creation	ontime1	24012.386710405	Sum of GTIs [s]
revision	1	Processing version of data	ontime2	24012.427750468	Sum of GTIs [s]
			ontime3	24009.327700019	Sum of GTIs [s]
			ontime6	24009.163529634	Sum of GTIs [s]
			l1events	887541	Number of level 1 events

2.1.4 Events

	ccd 0	ccd 1	ccd 2	ccd 3	ccd 6
level 1 events	166063	172270	181455	179526	188227
rejected events	145147	149514	161114	160125	167734
rejected %	87%	86%	88%	89%	89%

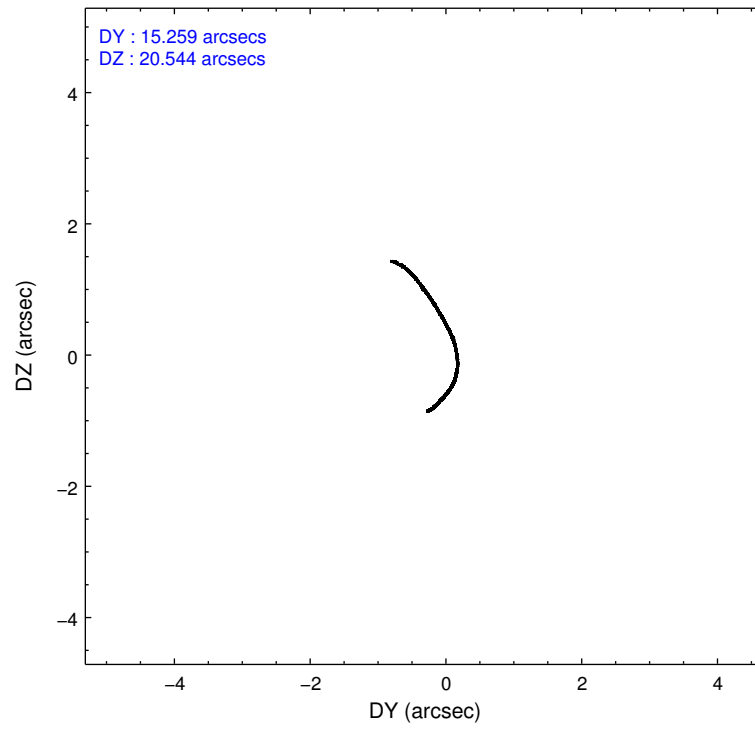
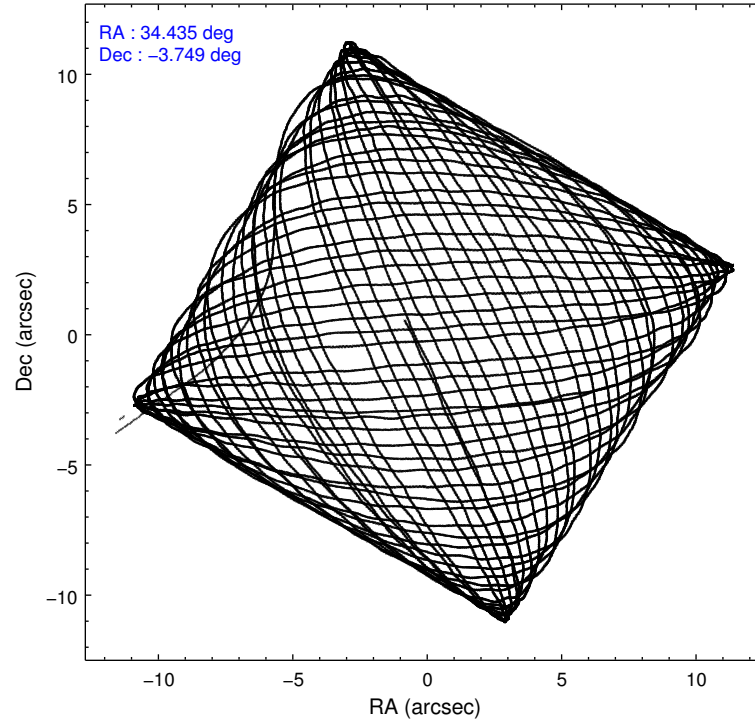
	ccd 0	ccd 1	ccd 2	ccd 3	ccd 6
grade 0 events	7060	7703	7178	6761	6656
	4%	4%	3%	3%	3%
grade 1 events	112	104	116	92	69
	0%	0%	0%	0%	0%
grade 2 events	5381	5647	5015	4355	4860
	3%	3%	2%	2%	2%
grade 3 events	2089	2119	2005	2051	2049
	1%	1%	1%	1%	1%
grade 4 events	1963	2123	2040	1965	2000
	1%	1%	1%	1%	1%
grade 5 events	8273	8379	7775	8945	8579
	4%	4%	4%	4%	4%
grade 6 events	4425	5164	4106	4271	4934
	2%	2%	2%	2%	2%
grade 7 events	136760	141031	153220	151086	159080
	82%	81%	84%	84%	84%

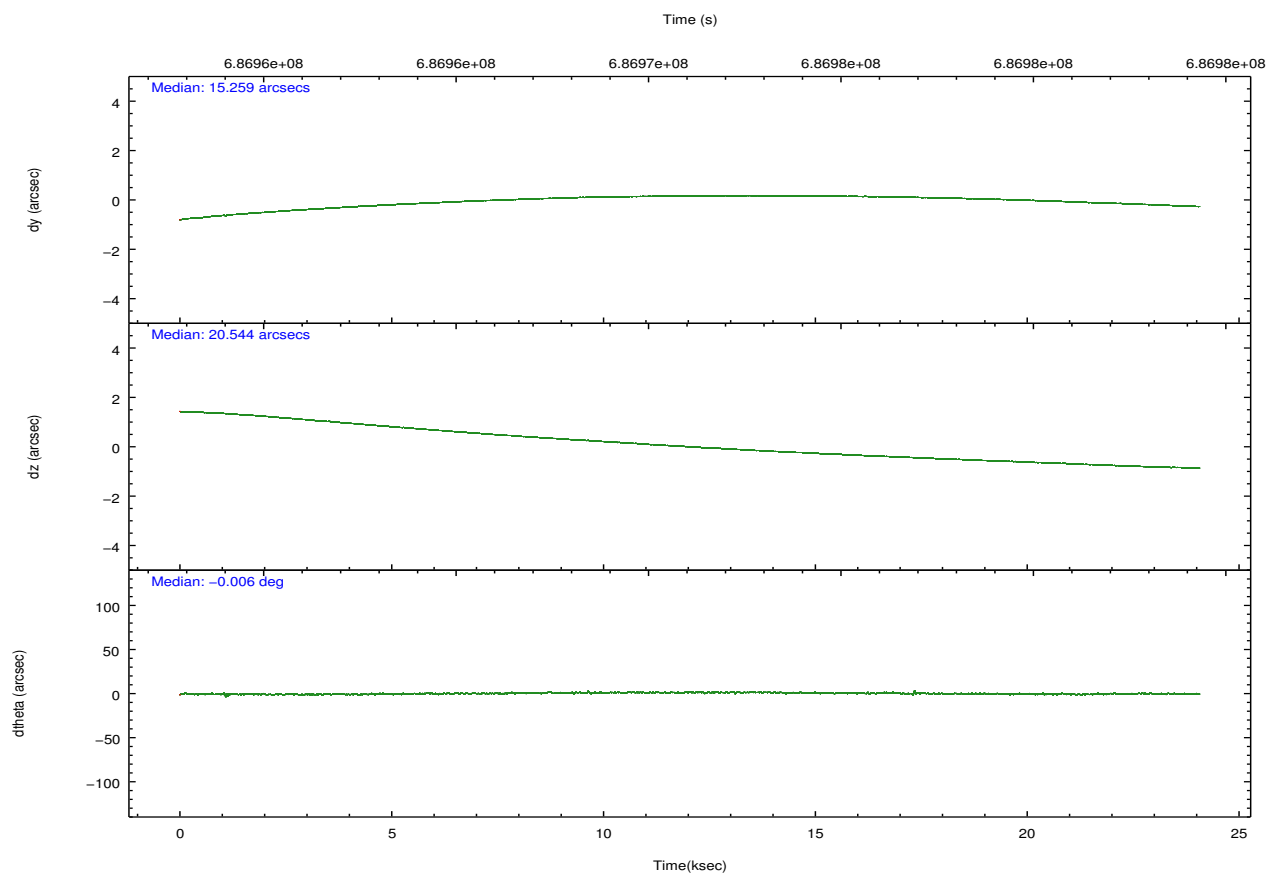
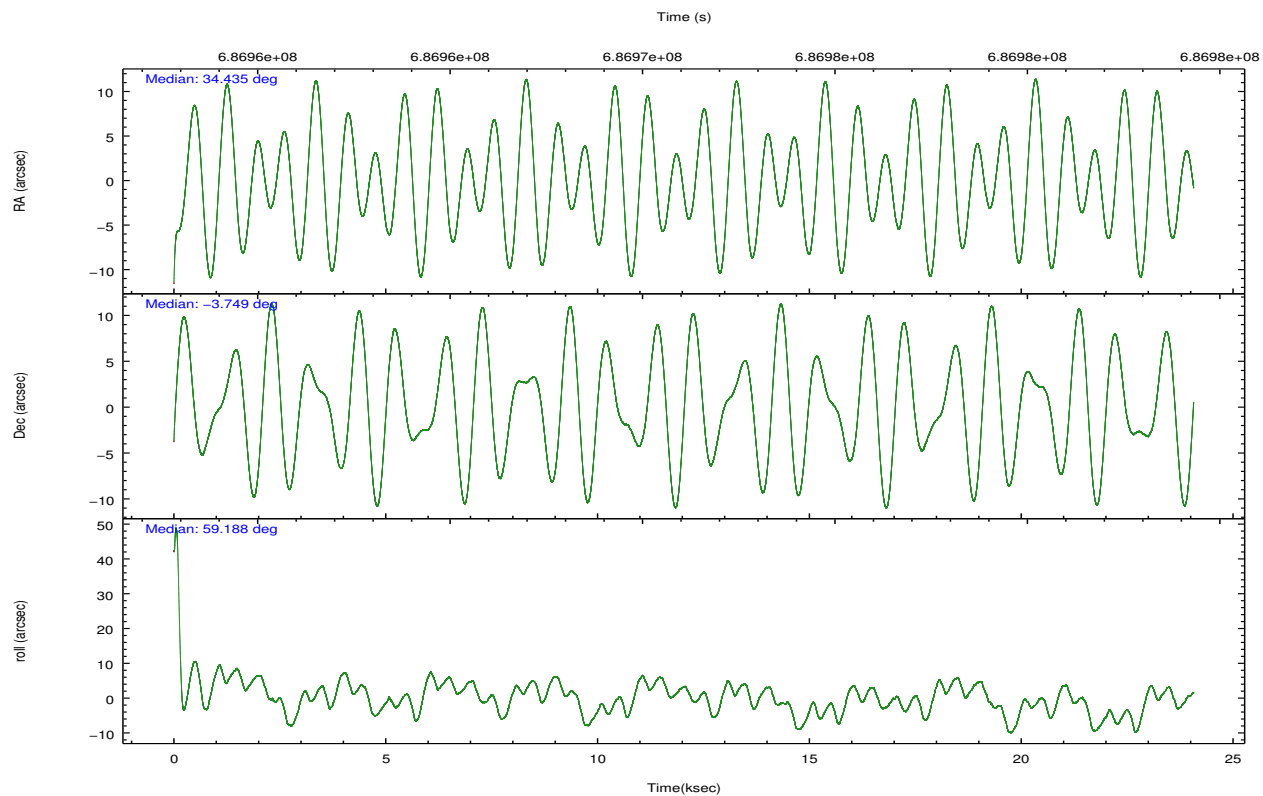
2.2 Compared Parameters

Parameter	Planned	Actual
Instrument	ACIS	ACIS
Detector	ACIS-01236	ACIS-01236
Grating	NONE	NONE
Data mode	VFAINT	VFAINT
Observation mode	POINTING	POINTING
[deg] Pointing RA	34.434757	34.43503425042525
[deg] Pointing Dec	-3.776049	-3.748448151705614
[deg] Pointing Roll	59.000110	59.20881497712867
[mm] SIM focus pos	-0.782348	-0.7809083437167272
[mm] SIM defocus	0	0.001439871863259334
[mm] SIM translation stage pos	-231.592463	-231.5960967419932
[mm] SIM translation stage offset	-2	-1.996356260936523
[s] Observation start time (MET)	686959166.184000	686957876.0796
Observation start date	2019-10-08T21:58:17	2019-10-08T21:37:56
[s] Observation end time (MET)	686983112.184000	686983461.6186399
Observation end date	2019-10-09T04:37:23	2019-10-09T04:44:21
Read mode	TIMED	TIMED

Parameter	Planned	Actual
Obspar format version number	7	7
Obspar file type	PREDICTED	ACTUAL
Obspar update status	NONE	UPDATED
CCD I0 on	Y	Y
CCD I1 on	Y	Y
CCD I2 on	Y	Y
CCD I3 on	Y	Y
CCD S0 on	N	N
CCD S1 on	N	N
CCD S2 on	O1	Y
CCD S3 on	N	N
CCD S4 on	N	N
CCD S5 on	N	N
Number of optional ACIS chips dropped	0	0
On-chip summing requested	N	N
Subarray requested	NONE	NONE
Alternating exposures requested	N	N
[s] Primary exposure time	0.000000	3.1

2.3 Aspect



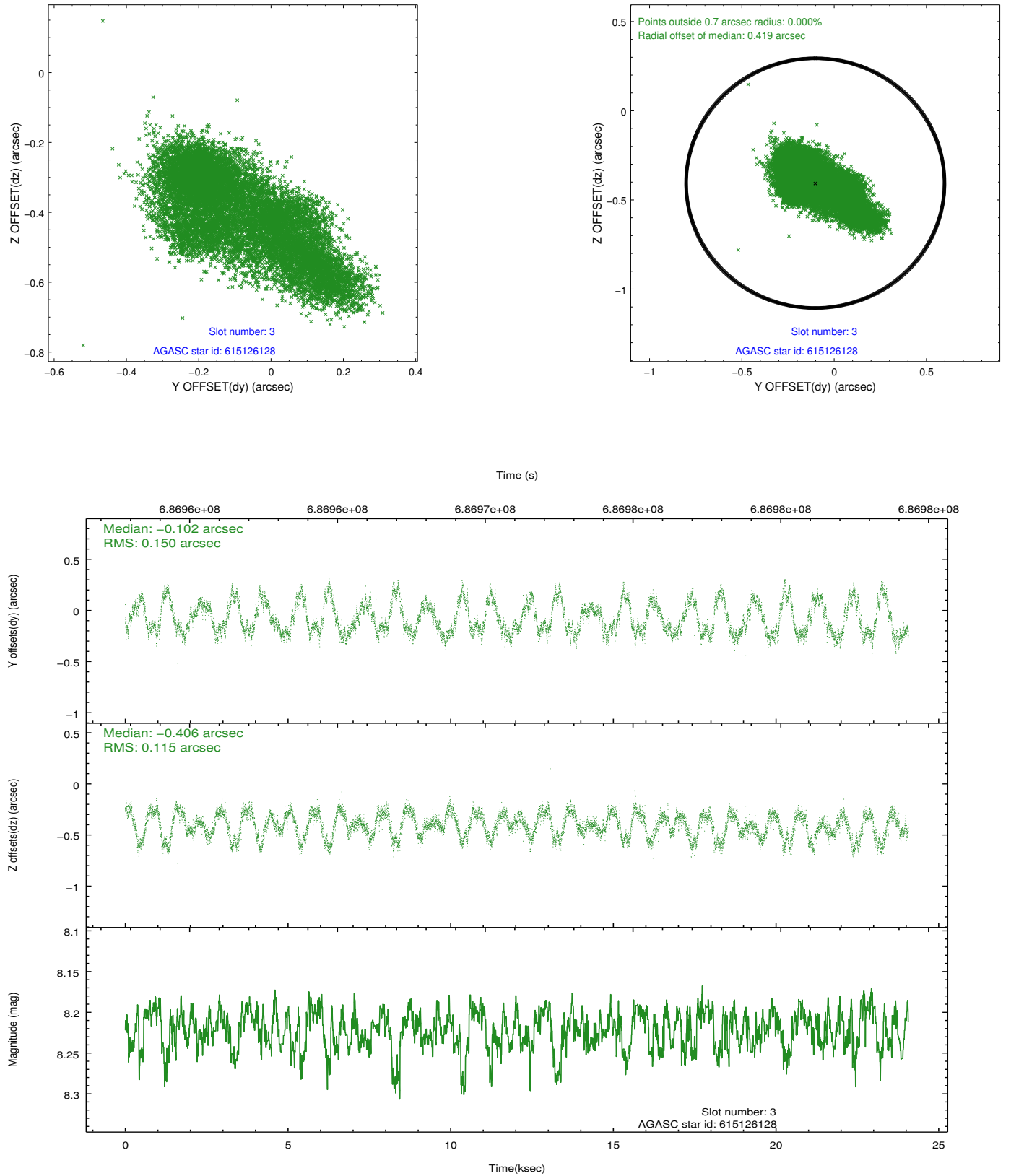


Slot Statistics

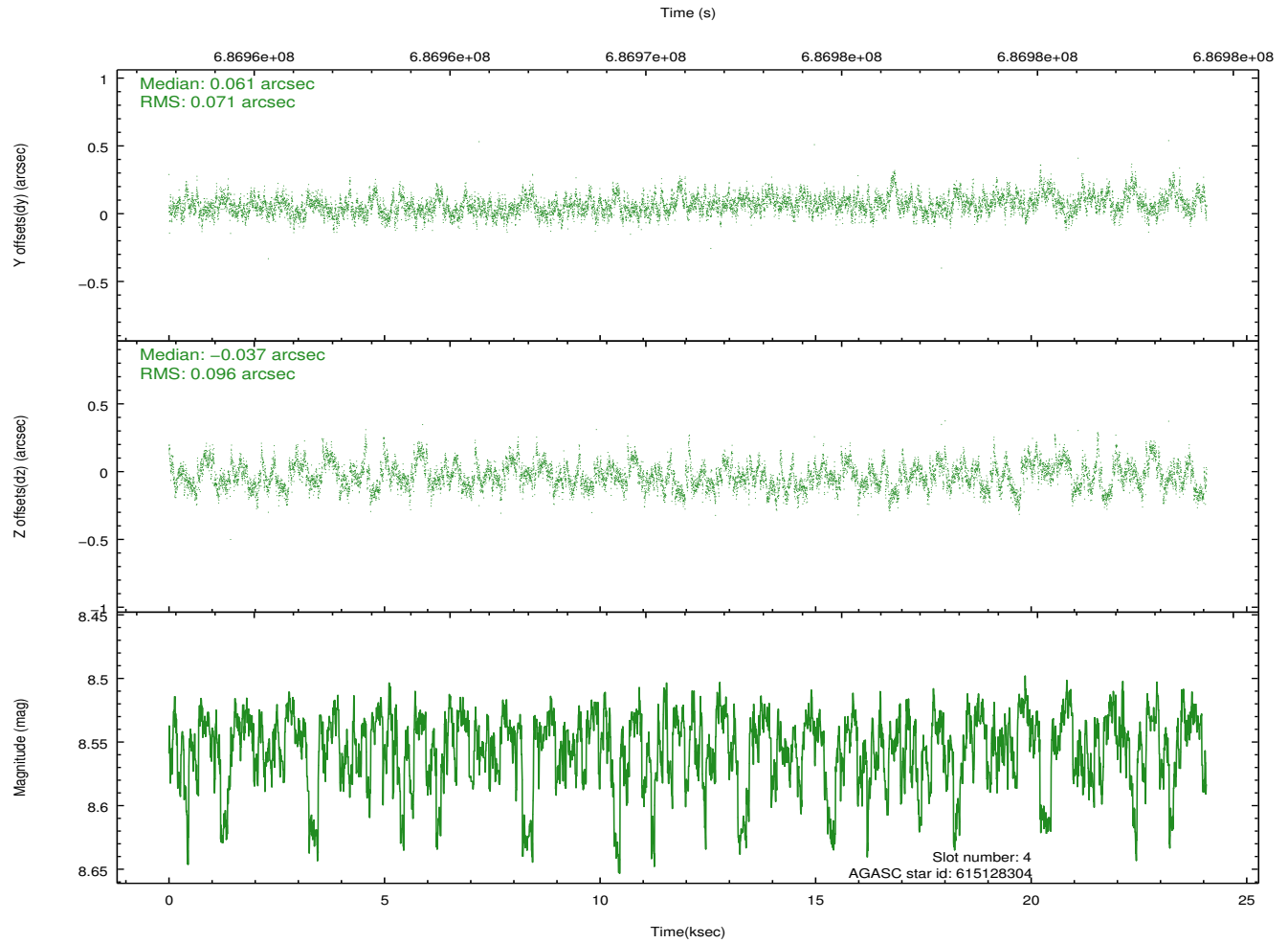
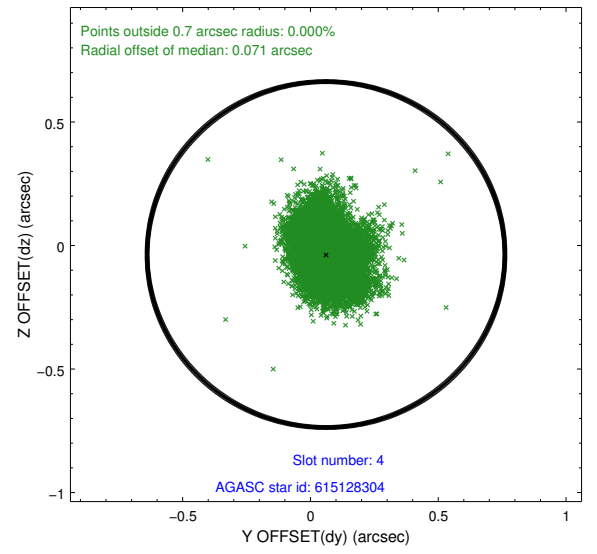
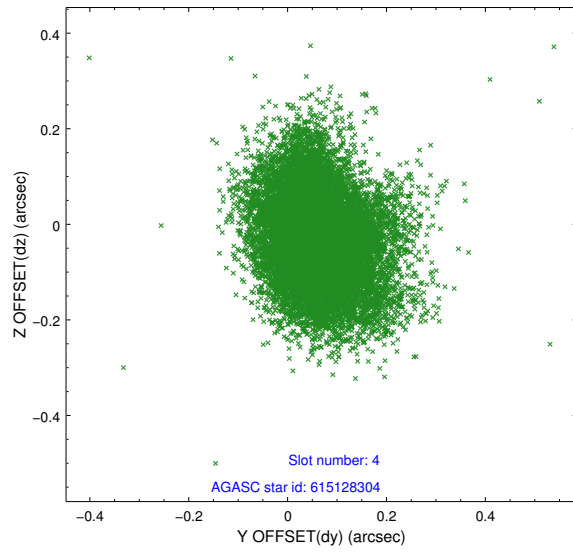
pt	status	used	id	mag	n_pts	frac_pts	med_dy	med_dz	dr1	dr2	ra	dec	mean_y	mea
0	FID		ACIS-I-1	7.15	5872	1.000	0.122	-0.137	0.026	0.068	0.000000	0.000000	924.41	-885
1	FID		ACIS-I-5	7.12	5871	1.000	-0.507	0.030	0.014	0.020	0.000000	0.000000	-1824.39	1011
2	FID		ACIS-I-6	7.16	5872	1.000	0.290	0.178	0.031	0.070	0.000000	0.000000	389.80	1656
3	GUIDE	used	615126128	8.22	11741	1.000	-0.102	-0.406	0.196	0.337	34.026050	-3.868420	-1040.65	1087
4	GUIDE	used	615128304	8.55	11731	1.000	0.061	-0.037	0.126	0.206	34.566287	-4.097564	-745.84	-1001
5	GUIDE	used	615129592	8.83	11732	1.000	0.023	0.353	0.130	0.208	34.607456	-4.334536	-1402.72	-1566
6	GUIDE	used	615129680	8.99	11731	1.000	0.017	0.312	0.228	0.346	34.462822	-4.356201	-1736.80	-1160
7	GUIDE	used	615129992	8.39	11730	1.000	-0.012	-0.214	0.121	0.193	33.989595	-4.095121	-1806.39	775

2.4 Star Slots

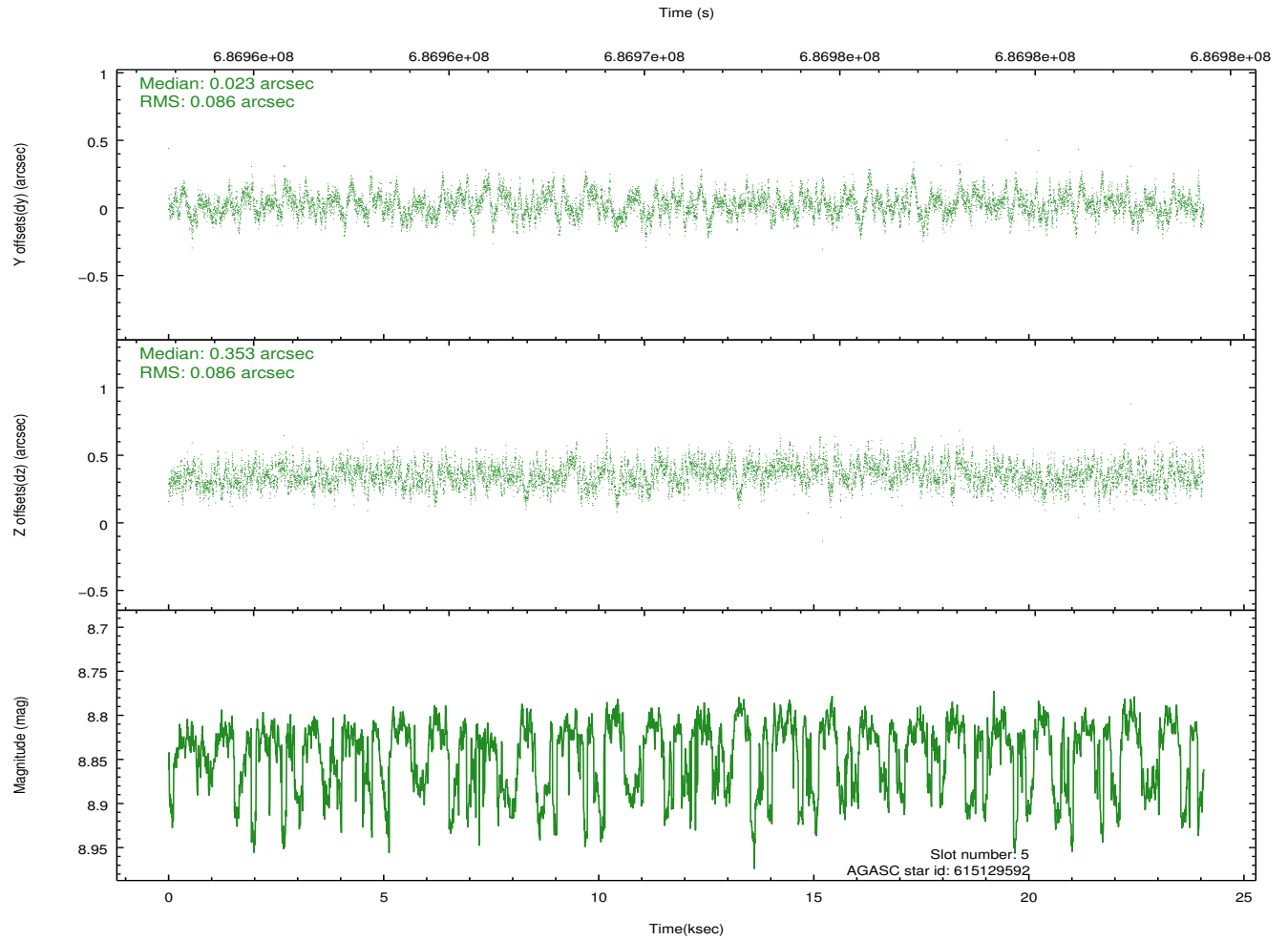
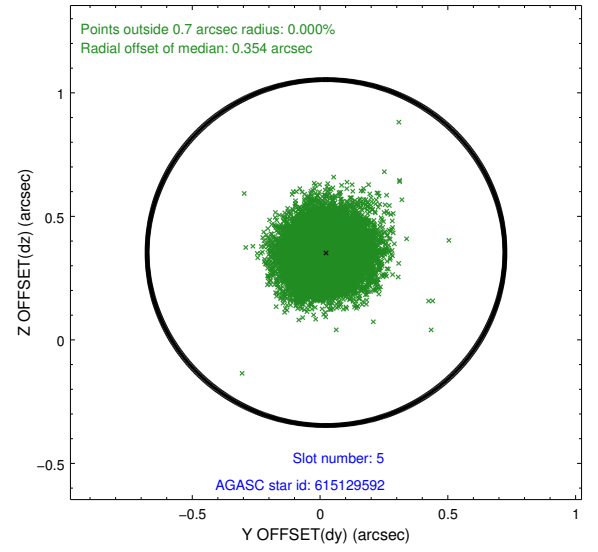
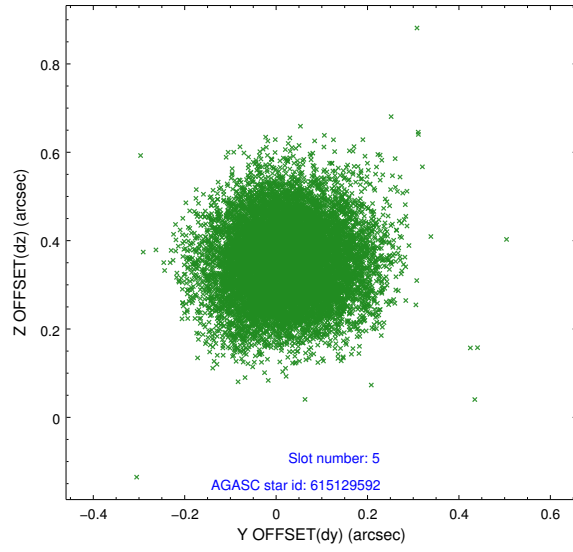
2.4.1 Slot 3



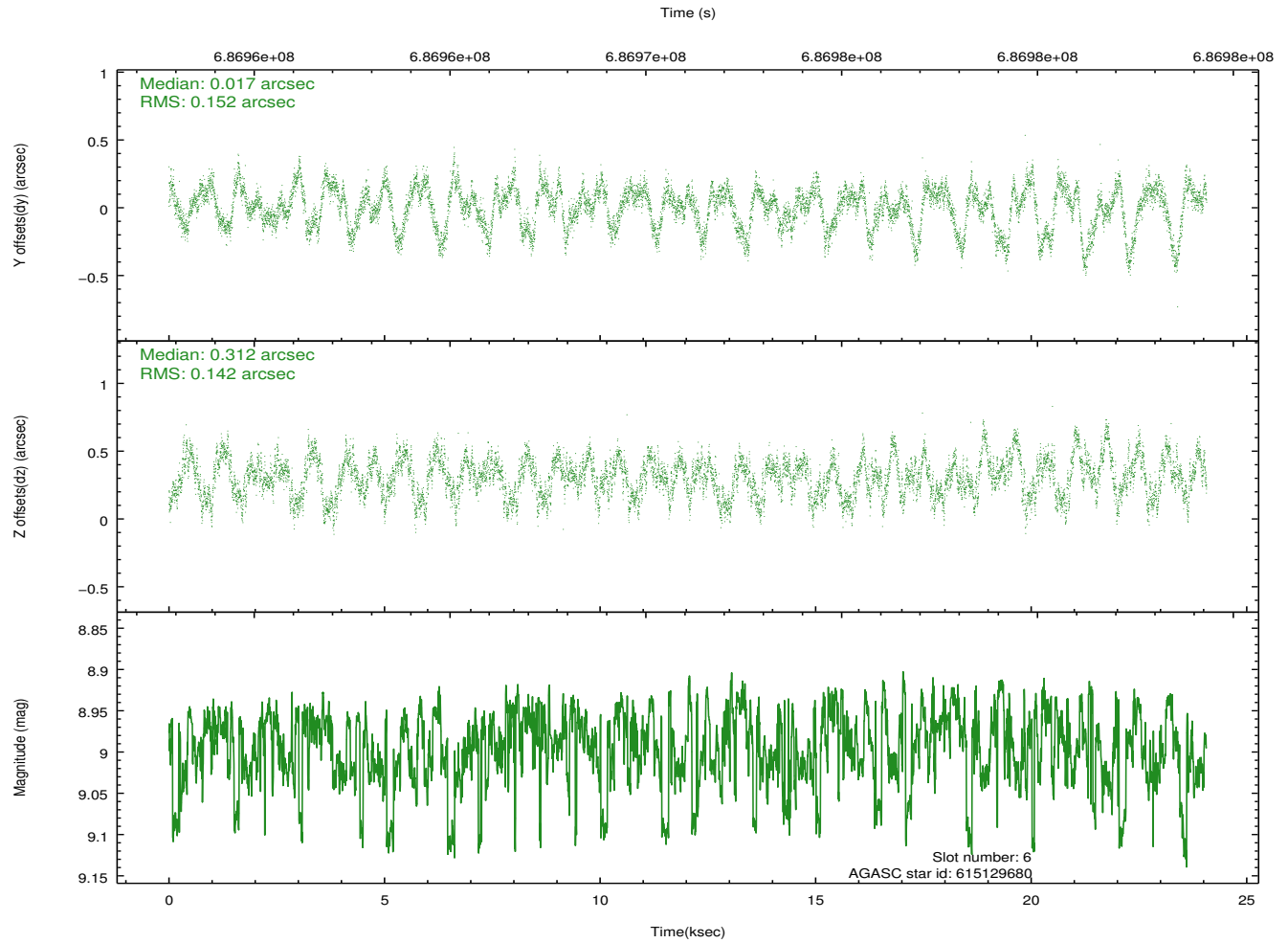
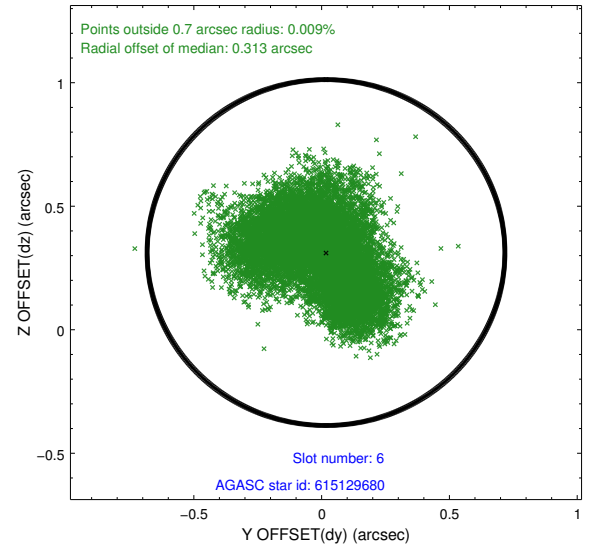
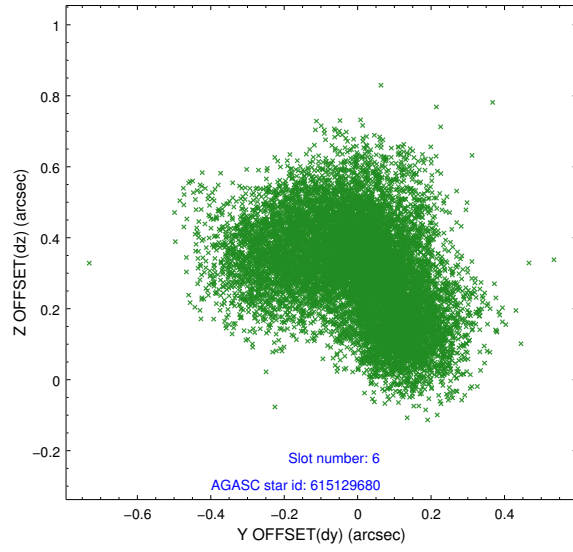
2.4.2 Slot 4



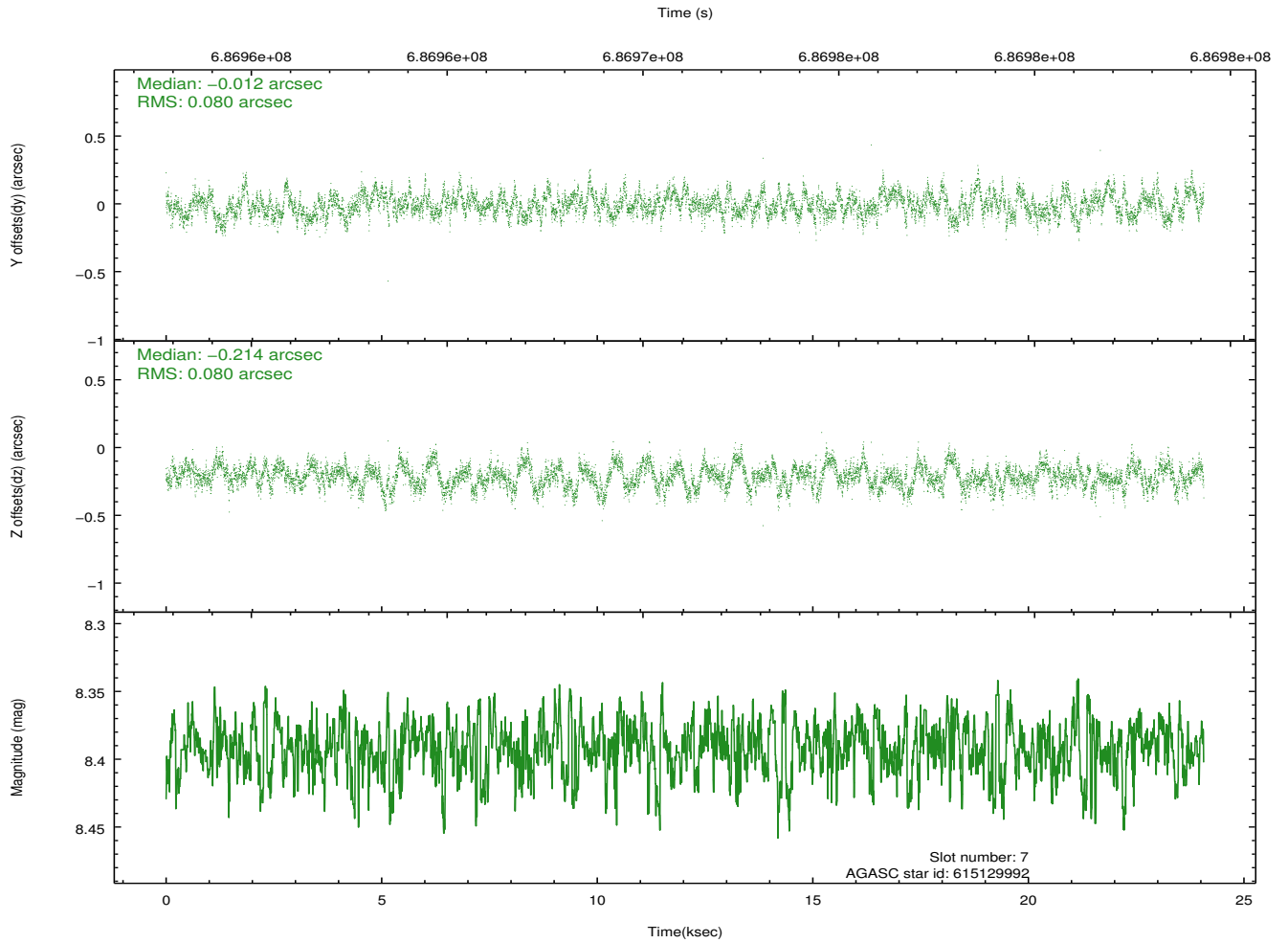
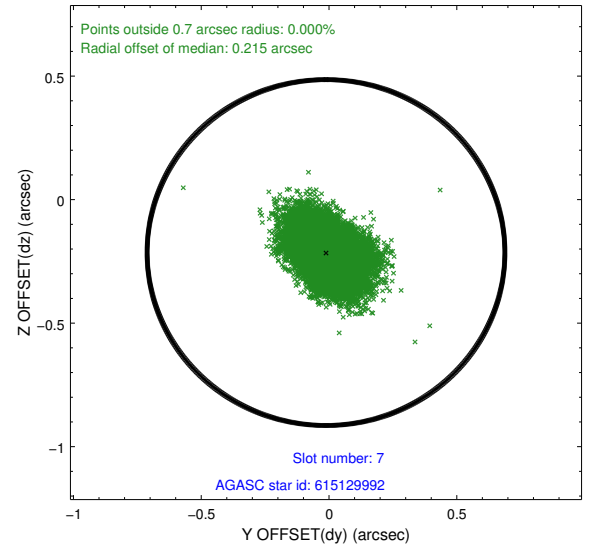
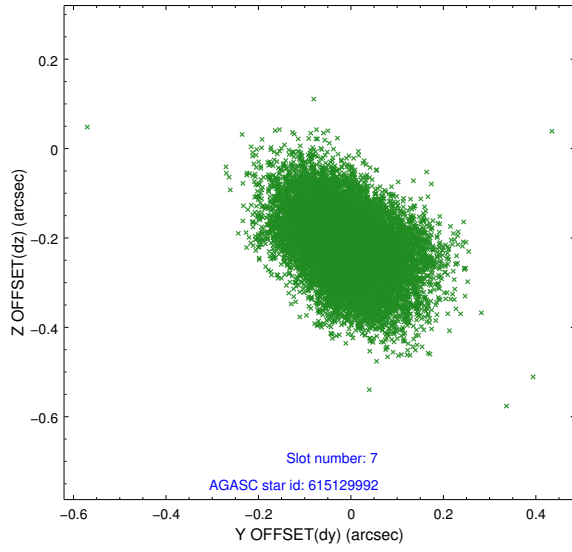
2.4.3 Slot 5



2.4.4 Slot 6

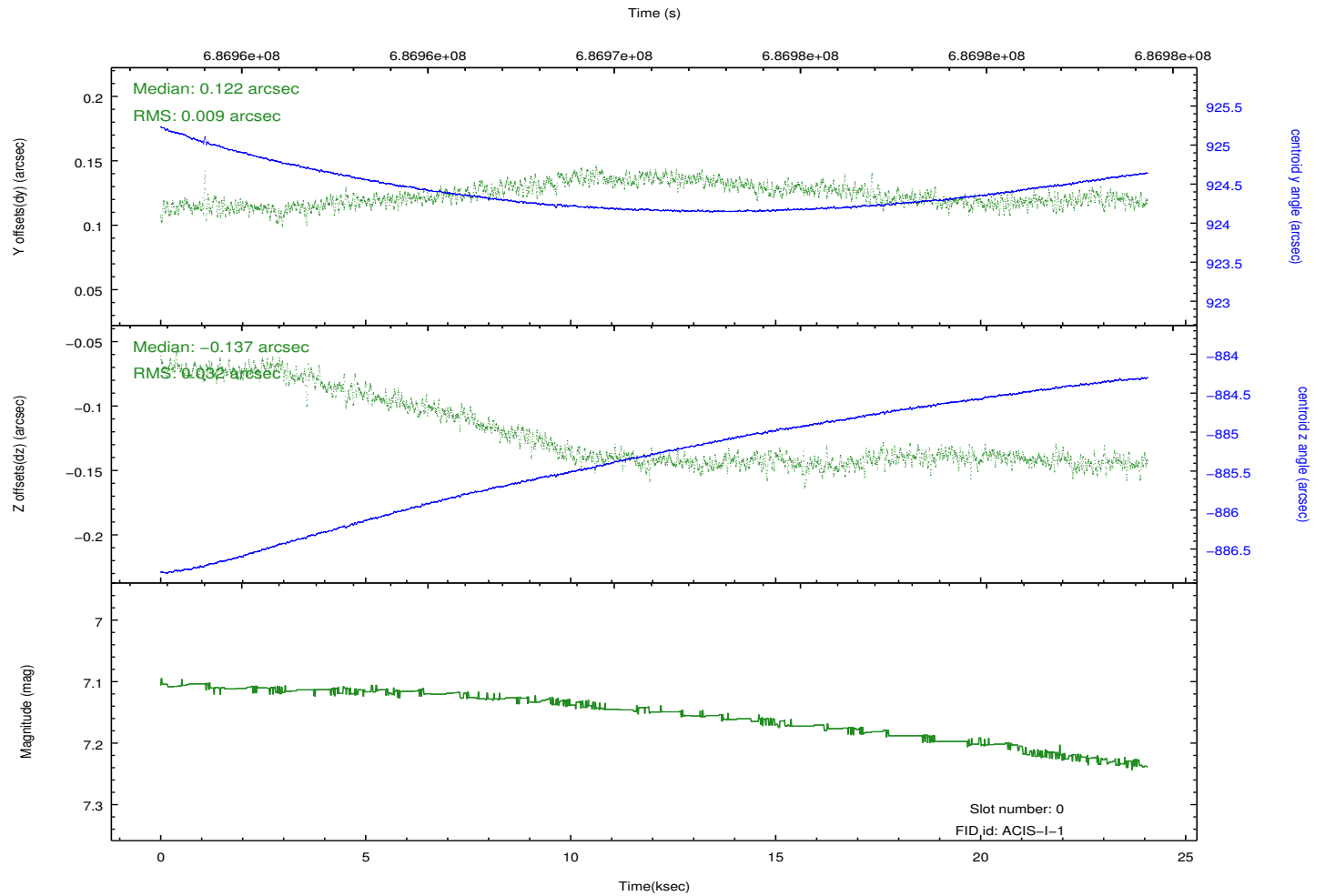
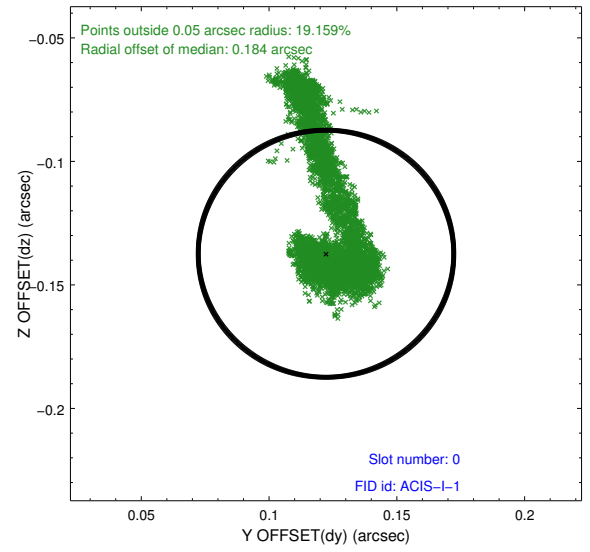
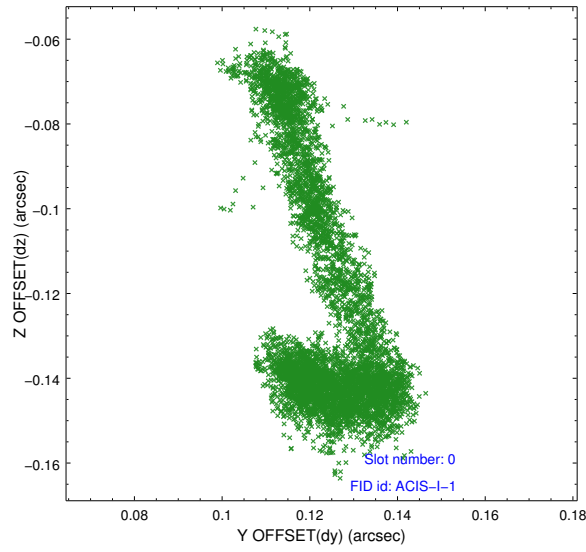


2.4.5 Slot 7

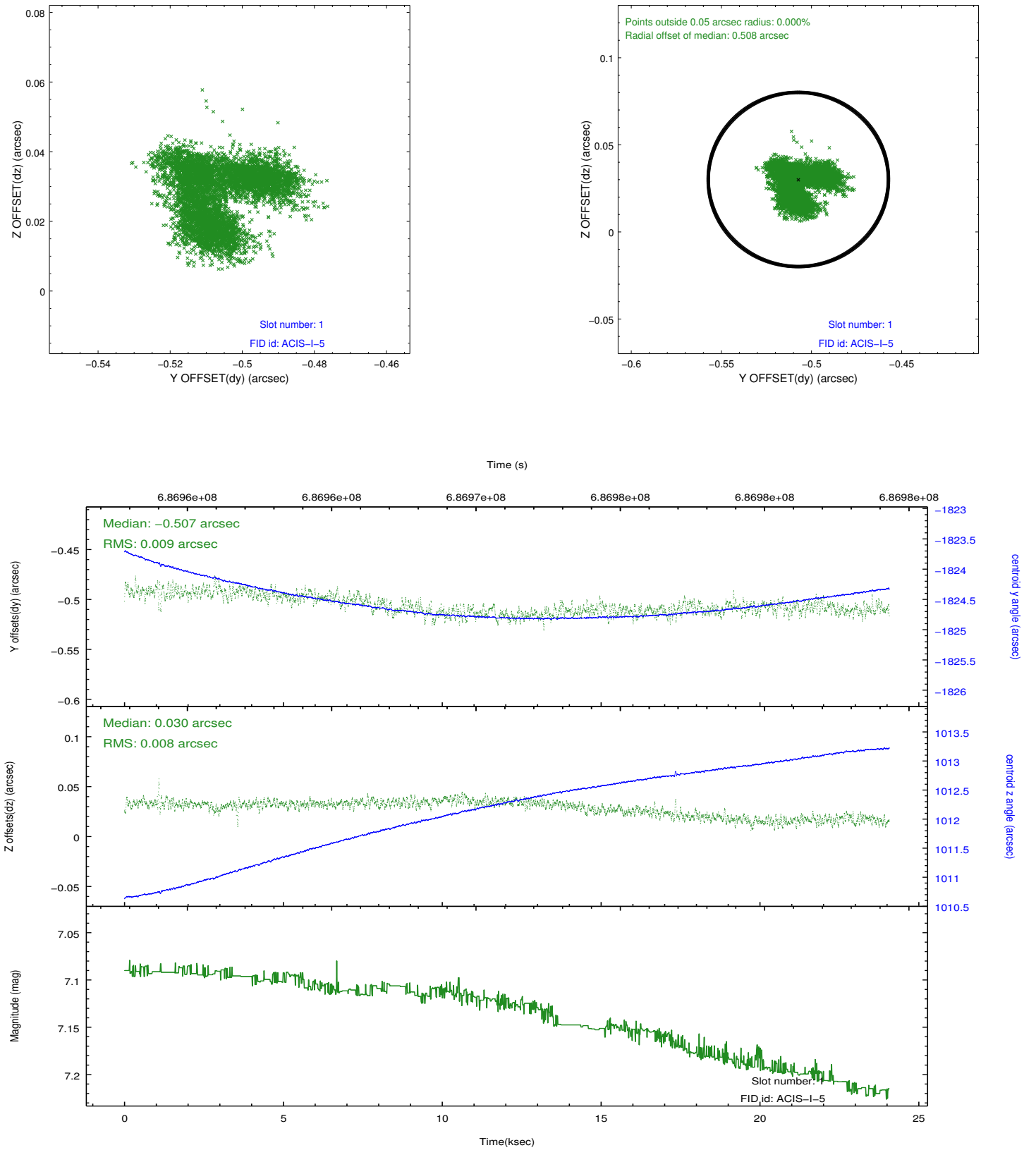


2.5 FID Slots

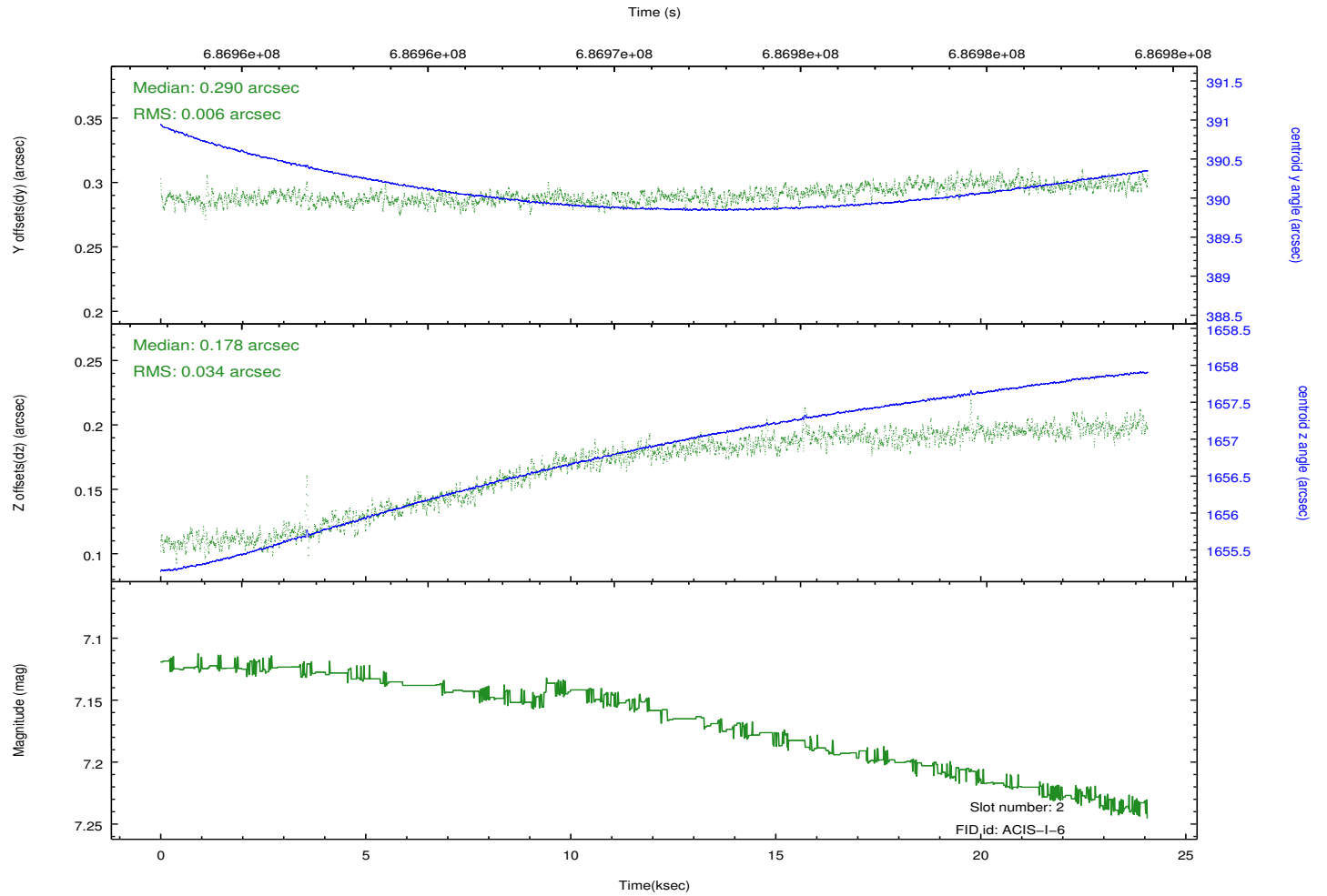
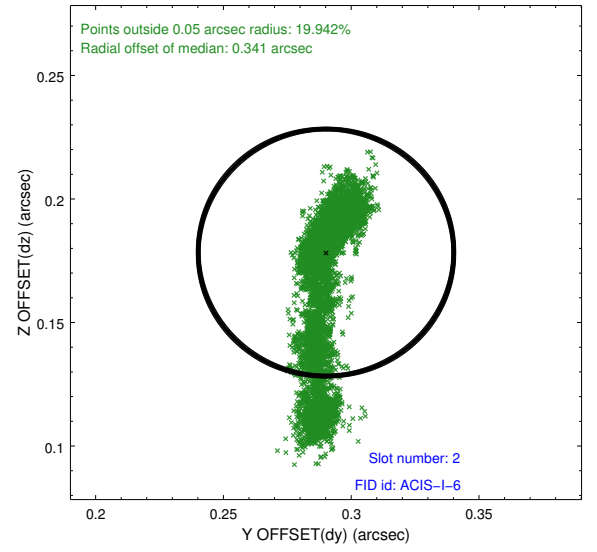
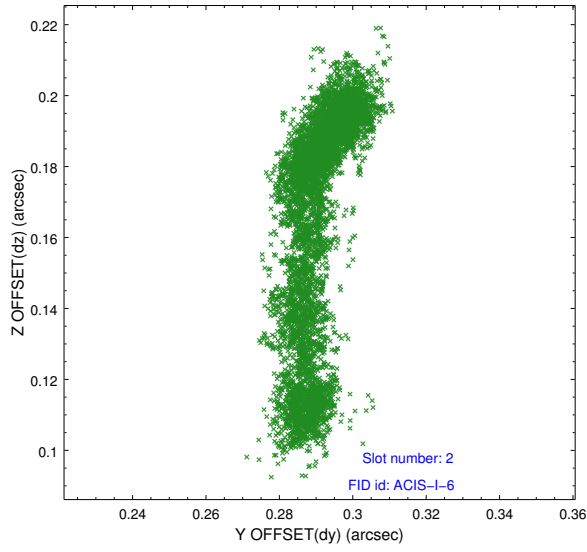
2.5.1 Slot 0



2.5.2 Slot 1



2.5.3 Slot 2



A Summary

A.1 Status

V&V Scientist	Jen Lauer
V&V Date (YYYY-MM-DD)	2019.10.09
V&V Edition	1
V&V Disposition and Status	OK
V&V Charge Time	24.009327700019

A.2 Comments