

V&V Reference Report

L2 ASCDS Version : 10.8.4

Observation 23315 - L2 Version 1
Chandra X-Ray Center

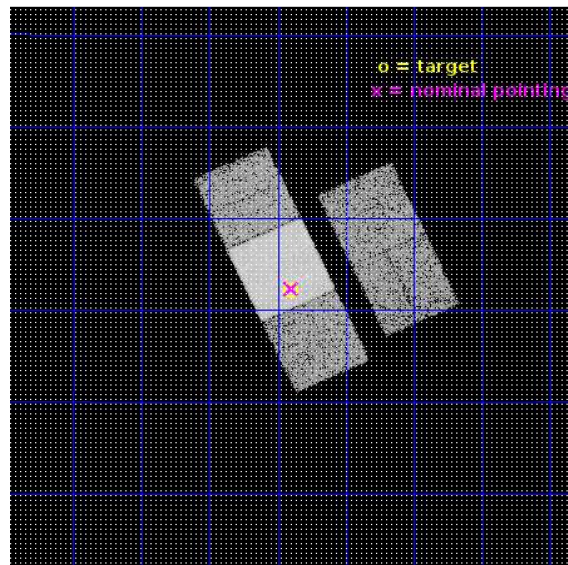
L2 Processing Date : Jul 12 2020

Contents

1	Front	2
2	OBI	3
2.1	OBI	3
2.1.1	Images	3
2.1.2	Bias	3
2.1.3	Parameters	4
2.1.4	Events	4
2.2	Compared Parameters	5
2.3	Aspect	6
2.4	Star Slots	9
2.4.1	Slot 3	9
2.4.2	Slot 4	10
2.4.3	Slot 5	11
2.4.4	Slot 6	12
2.4.5	Slot 7	13
2.5	FID Slots	14
2.5.1	Slot 0	14
2.5.2	Slot 1	15
2.5.3	Slot 2	16
A	Summary	17
A.1	Status	17
A.2	Comments	17

1 Front

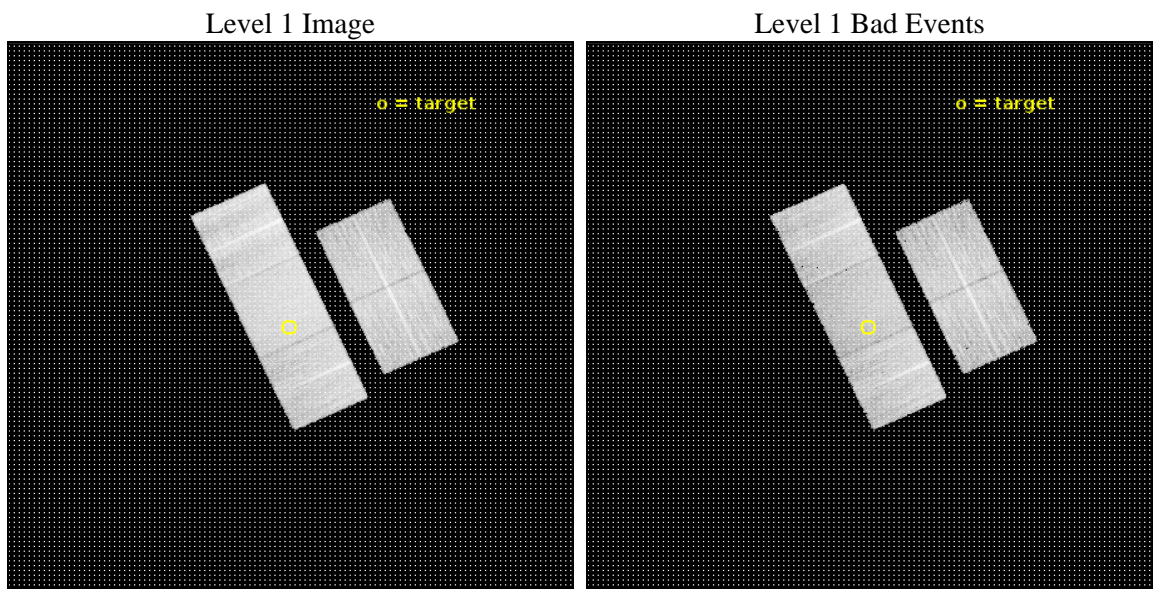
seq_num	503206	Sequence number
obs_id	23315	Observation id
title	X-ray Progenitor Constraints of the Subluminous Type Ia SN2020nlb	
observer	David Sand	Principal investigator
object	SN2020nlb	Source name
dtcycle	0	
cycle	P	events from which exps? Prim/Second/Both
ra_targ	186.35075	Observer's specified target RA [deg]
dec_targ	18.203472	Observer's specified target Dec [deg]
ra_nom	186.34978373	Nominal RA [deg]
dec_nom	18.2059604922	Nominal Dec [deg]
roll_nom	245.153211366	Nominal Roll [deg]
revision	1	Processing version of data
ontime	12356.394037724	Sum of GTIs [s]
livetime	12194.948652976	Livetime [s]
ontime2	12353.088847518	Sum of GTIs [s]
ontime3	12356.311957717	Sum of GTIs [s]
ontime6	12356.35299778	Sum of GTIs [s]
ontime7	12356.394037724	Sum of GTIs [s]
ontime8	12356.270917773	Sum of GTIs [s]
l2events	92555	Number of level 2 events



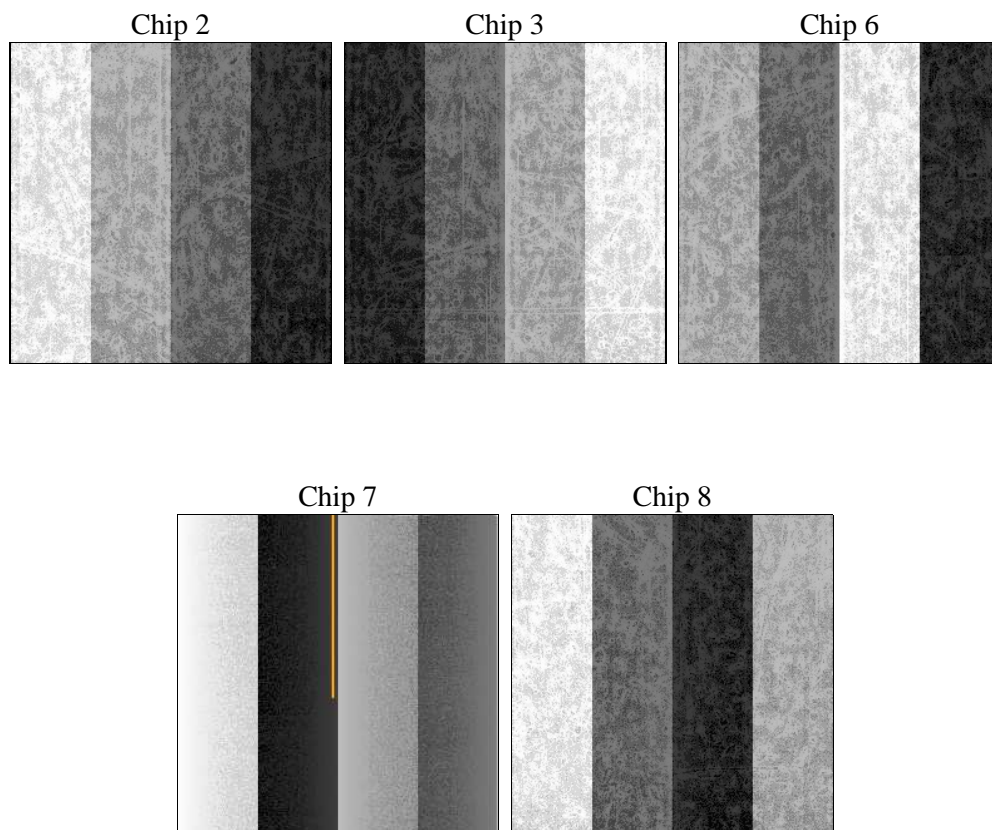
2 OBI

2.1 OBI

2.1.1 Images



2.1.2 Bias



2.1.3 Parameters

obi_num	0	Obi number	sched_exp_time	12300.000000	[s] Scheduled observation exposure time
ascdsver	10.8.4	Processing system revision	ontime	12356.394037724	Sum of GTIs [s]
caldsver	4.9.2	 	ontime2	12353.088847518	Sum of GTIs [s]
date	2020-07-12T14:23:46	Date and time of file creation	ontime3	12356.311957717	Sum of GTIs [s]
revision	1	Processing version of data	ontime6	12356.35299778	Sum of GTIs [s]
			ontime7	12356.394037724	Sum of GTIs [s]
			ontime8	12356.270917773	Sum of GTIs [s]
			l1events	552537	Number of level 1 events

2.1.4 Events

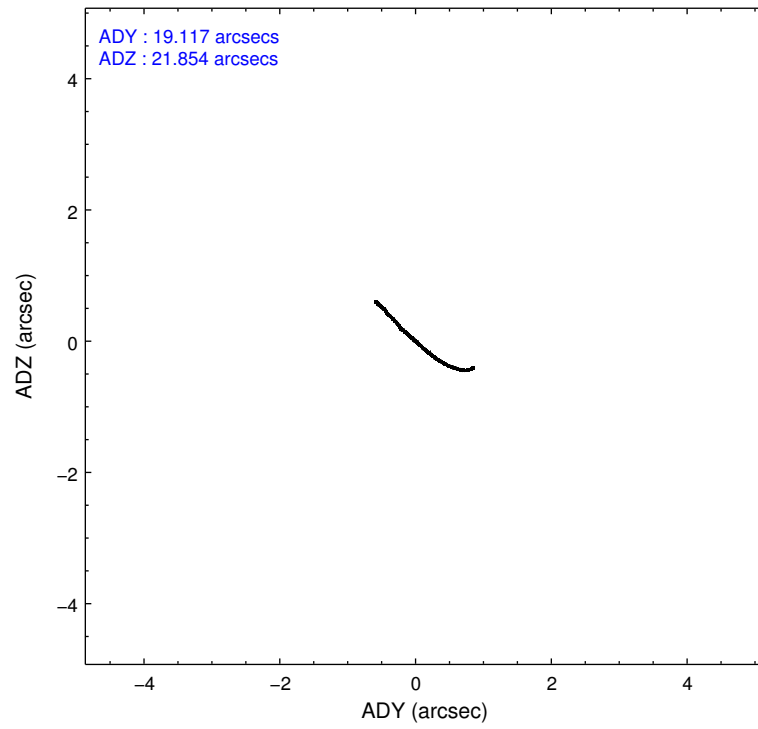
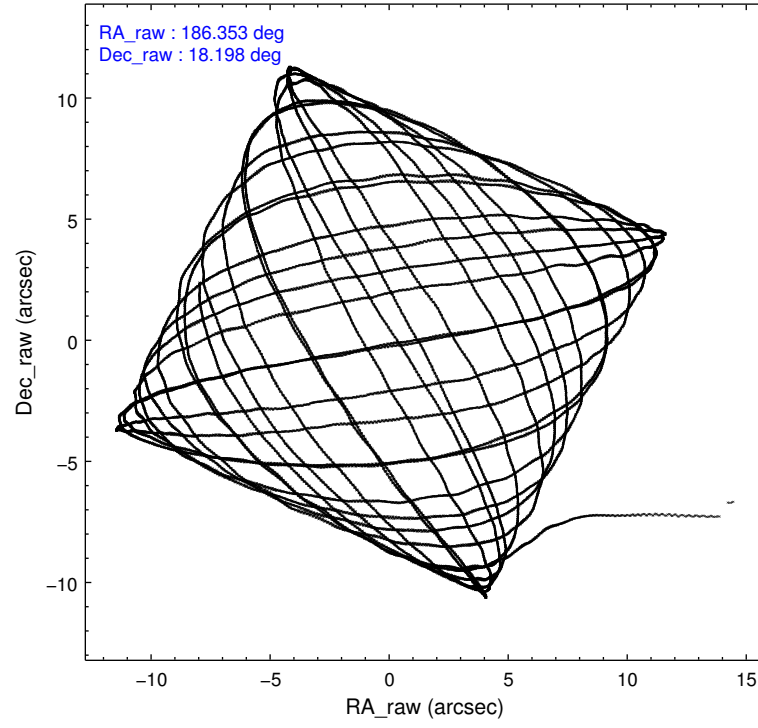
	ccd 2	ccd 3	ccd 6	ccd 7	ccd 8
level 1 events	97644	92435	102022	128613	131823
rejected events	87269	82263	90557	73436	95269
rejected %	89%	88%	88%	57%	72%

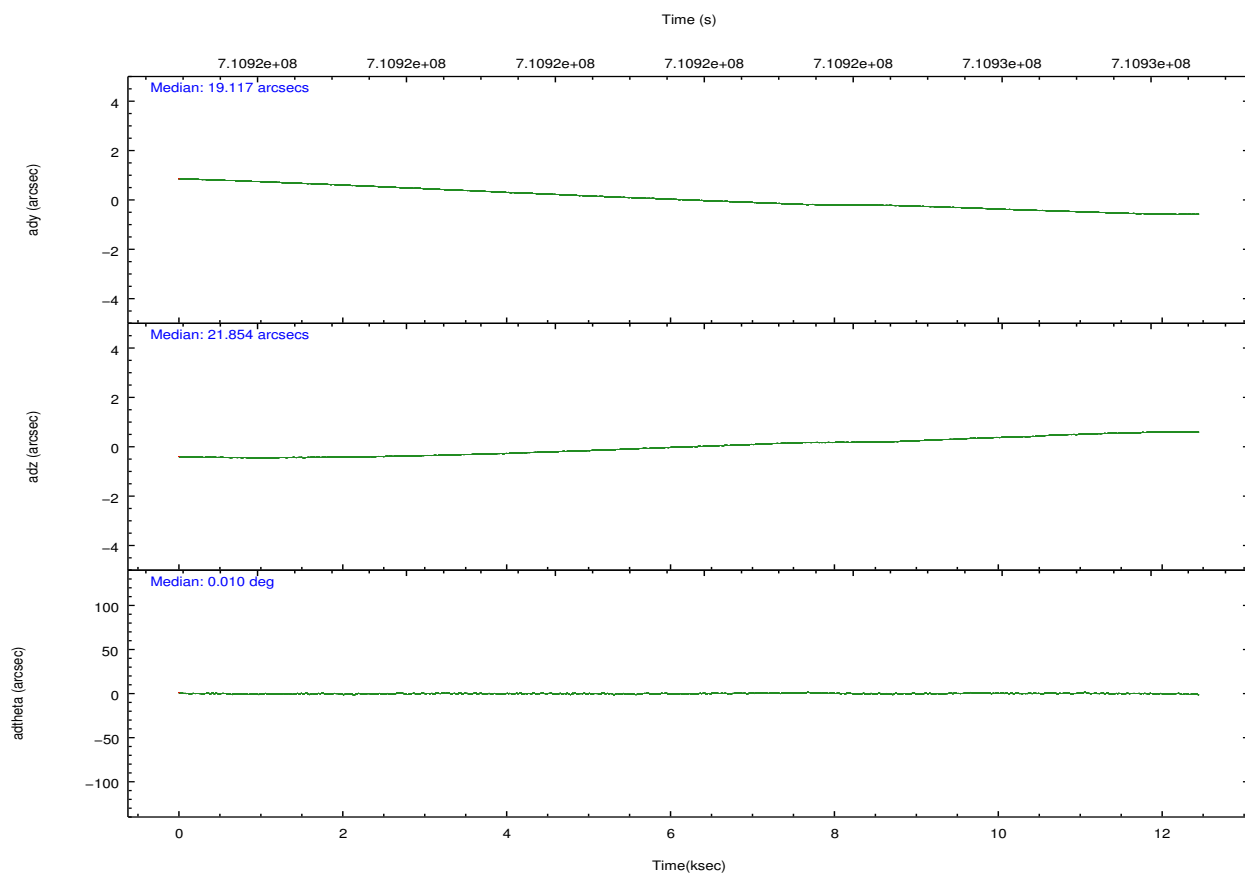
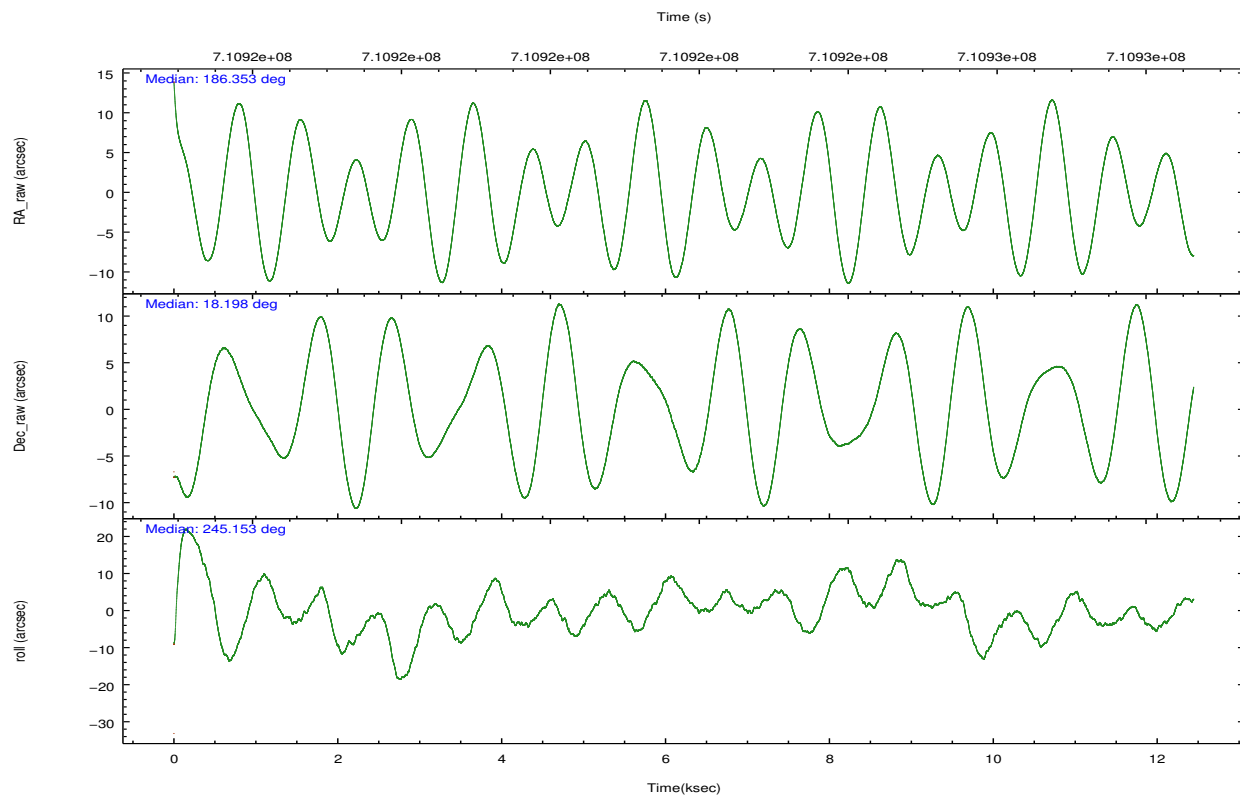
	ccd 2	ccd 3	ccd 6	ccd 7	ccd 8
grade 0 events	3725	3517	3737	4603	10403
	3%	3%	3%	3%	7%
grade 1 events	58	46	48	186	100
	0%	0%	0%	0%	0%
grade 2 events	2546	2168	2805	12068	8742
	2%	2%	2%	9%	6%
grade 3 events	1018	1122	1085	4222	3820
	1%	1%	1%	3%	2%
grade 4 events	1090	1086	1046	4055	3627
	1%	1%	1%	3%	2%
grade 5 events	4056	4715	4620	12383	7019
	4%	5%	4%	9%	5%
grade 6 events	1998	2280	2792	30247	9965
	2%	2%	2%	23%	7%
grade 7 events	83153	77501	85889	60849	88147
	85%	83%	84%	47%	66%

2.2 Compared Parameters

Parameter	Planned	Actual	Parameter	Planned	Actual
Instrument	ACIS	ACIS	Obspar version number	8	8
Detector	ACIS-23678	ACIS-23678	Obspar file type	PREDICTED	ACTUAL
Grating	NONE	NONE	Obspar update status	NONE	UPDATED
Data mode	VFAINT	VFAINT	CCD I0 on	N	N
Observation mode	POINTING	POINTING	CCD I1 on	N	N
[deg] Pointing RA	186.350446	186.34978373	CCD I2 on	O1	Y
[deg] Pointing Dec	18.225590	18.2059604922	CCD I3 on	O2	Y
[deg] Pointing Roll	245.000095	245.153211366	CCD S0 on	N	N
[mm] SIM focus pos	-0.684267	-0.6828225247311905	CCD S1 on	N	N
[mm] SIM defocus	0	0.001444936568705701	CCD S2 on	O4	Y
[mm] SIM translation stage pos	-190.132523	-190.1400660498719	CCD S3 on	Y	Y
[mm] SIM translation stage offset	0	0.00754346686406393	CCD S4 on	O3	Y
[s] Observation start time (MET)	710915724.184000	710914498.64086	CCD S5 on	N	N
Observation start date	2020-07-12T04:34:15	2020-07-12T04:14:58	Number of optional ACIS chips dropped	0	0
[s] Observation end time (MET)	710928024.184000	710929122.31675	On-chip summing requested	N	N
Observation end date	2020-07-12T07:59:15	2020-07-12T08:18:42	Subarray requested	NONE	NONE
Read mode	TIMED	TIMED	Alternating exposures requested	N	N
			[s] Primary exposure time	0.000000	3.1

2.3 Aspect



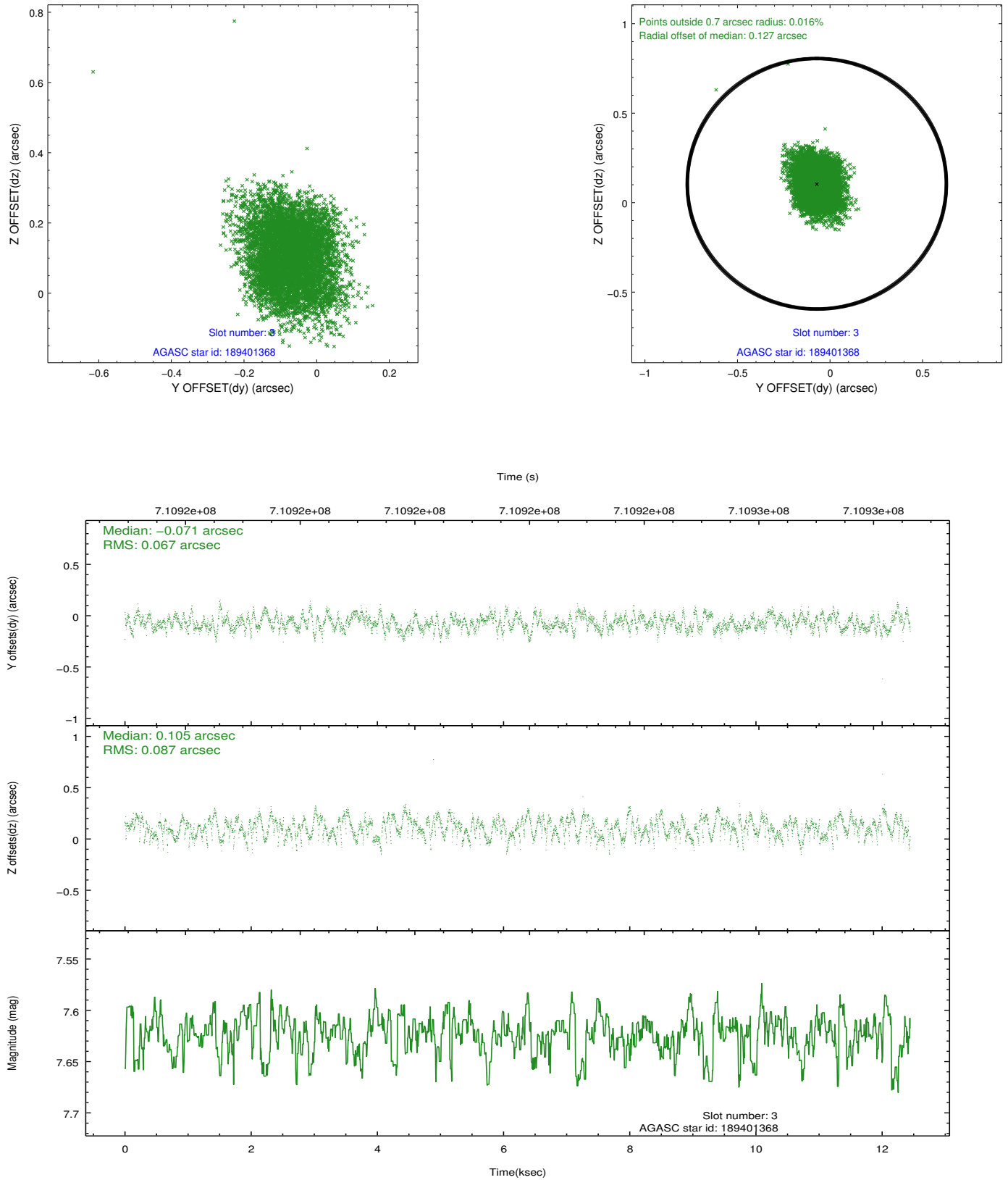


Slot Statistics

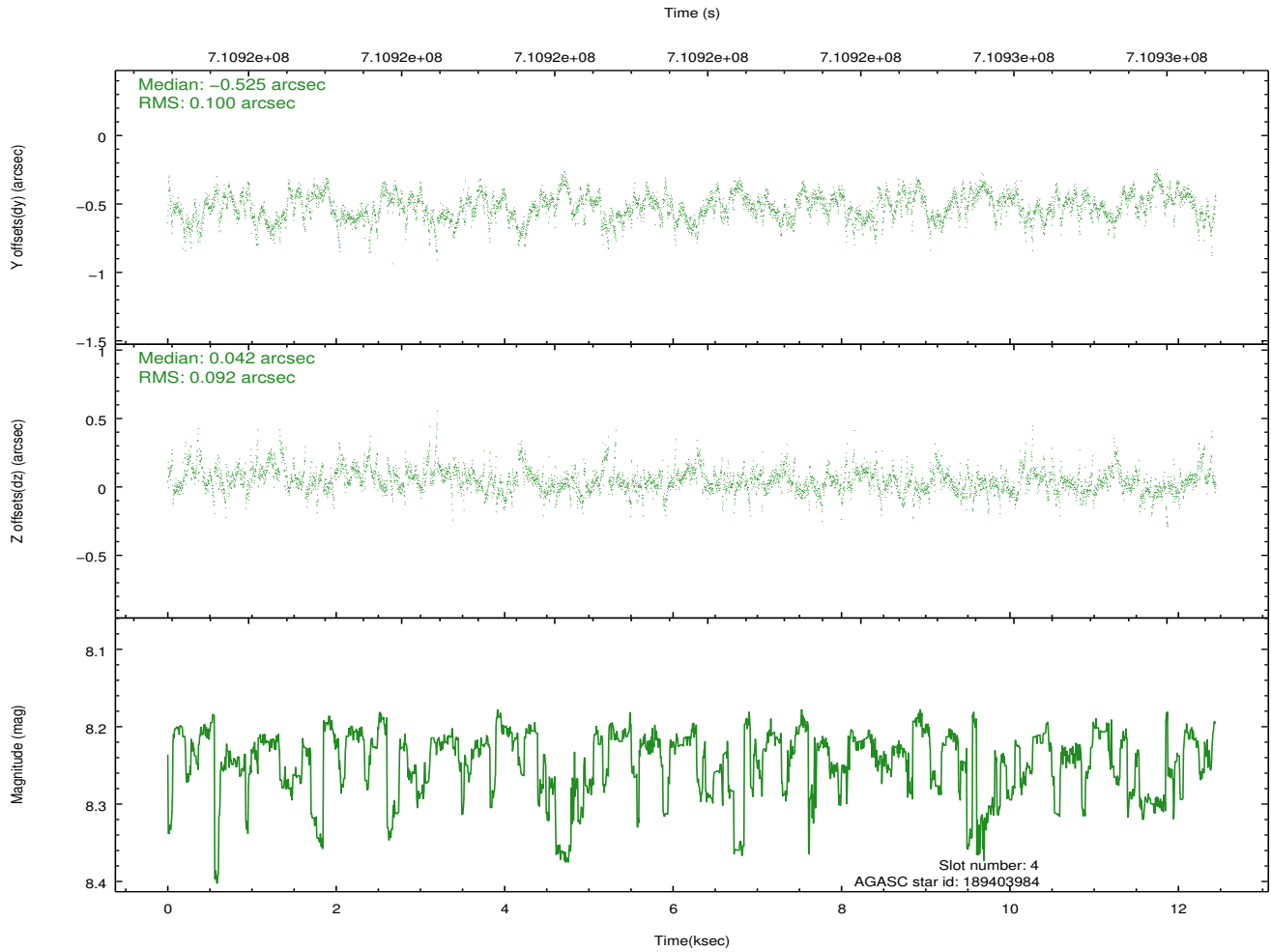
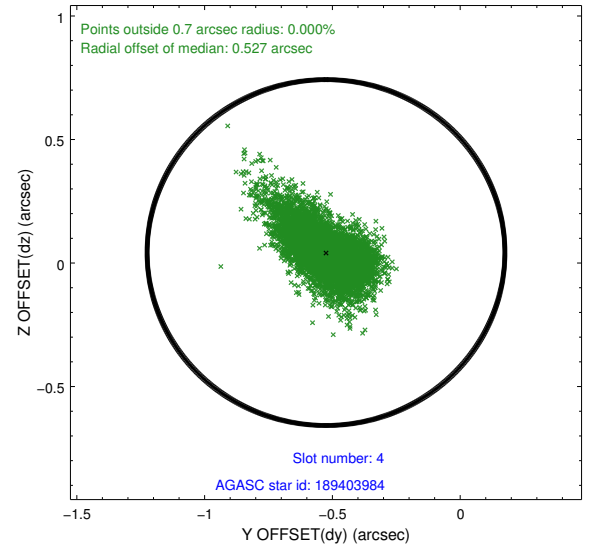
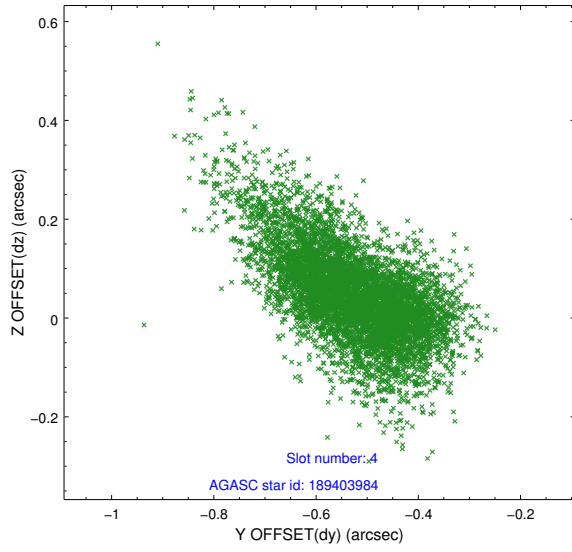
pt	status	used	id	mag	n_pts	frac_pts	med_dy	med_dz	dr1	dr2	ra	dec	mean_y	mea
0	FID		ACIS-S-2	7.00	3036	1.000	0.266	-0.110	0.018	0.025	0.000000	0.000000	-772.44	-1743
1	FID		ACIS-S-4	7.12	3036	1.000	0.032	-0.099	0.016	0.027	0.000000	0.000000	2140.90	164
2	FID		ACIS-S-5	7.10	3036	1.000	-0.332	0.216	0.014	0.029	0.000000	0.000000	-1824.90	159
3	GUIDE	used	189401368	7.62	6067	1.000	-0.071	0.105	0.118	0.183	186.150770	18.668355	-1157.10	-1290
4	GUIDE	used	189403984	8.24	6066	1.000	-0.525	0.042	0.137	0.244	187.021519	18.330647	-1315.75	1916
5	GUIDE	used	189407848	9.13	6050	1.000	0.536	-0.181	0.279	0.473	185.643887	17.789494	2442.56	-1533
6	GUIDE	used	189411056	8.70	6062	1.000	0.141	-0.275	0.141	0.235	186.168211	17.852769	1482.51	2
7	GUIDE	used	189665040	8.41	6067	1.000	-0.081	0.305	0.158	0.249	186.390146	18.867028	-2149.09	-852

2.4 Star Slots

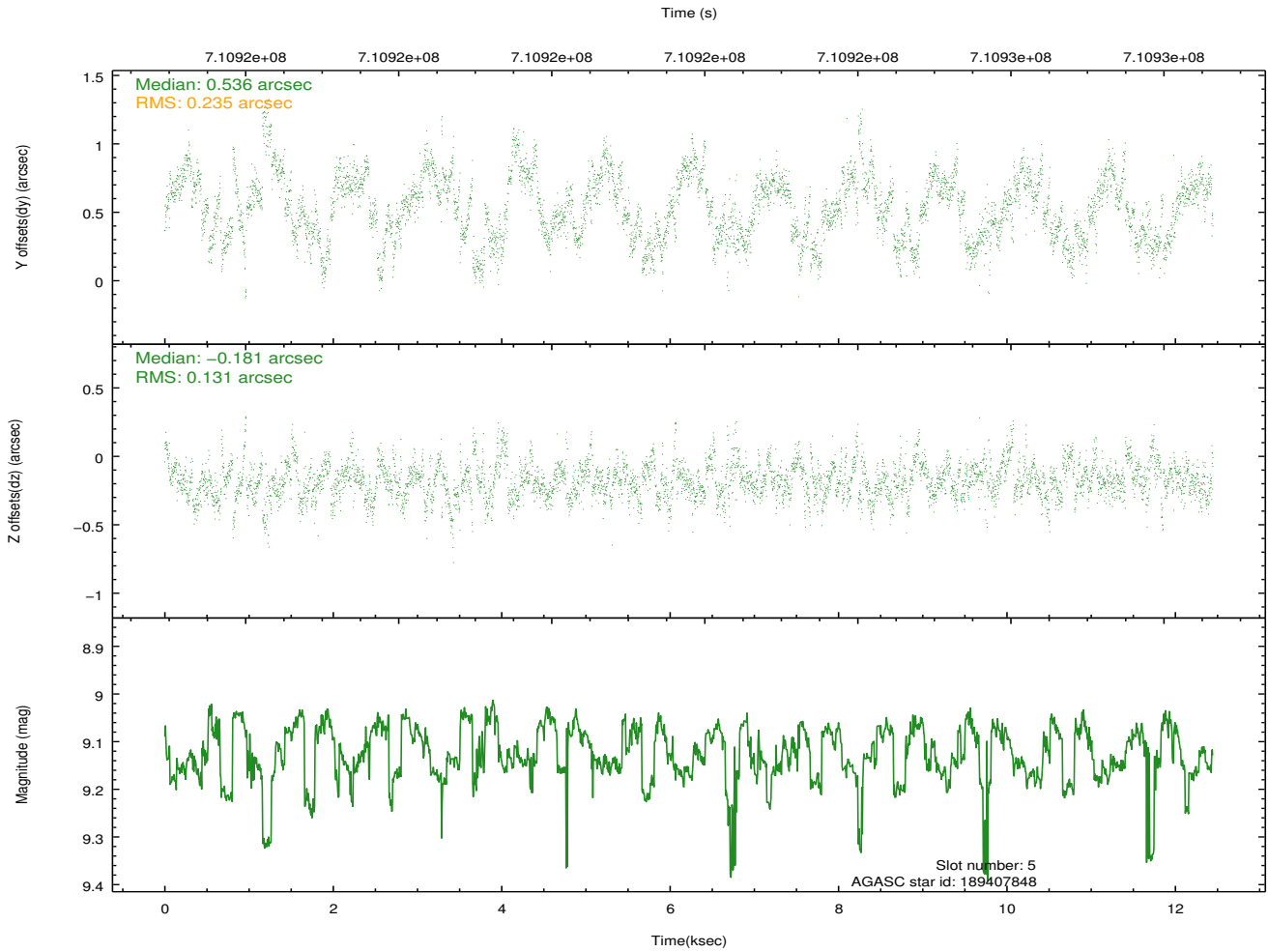
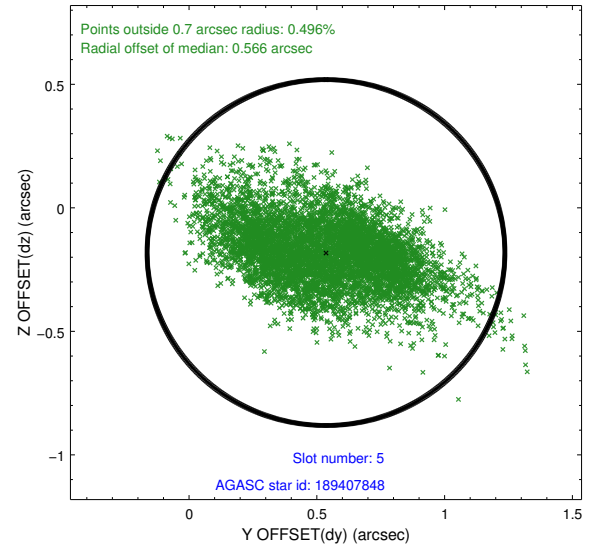
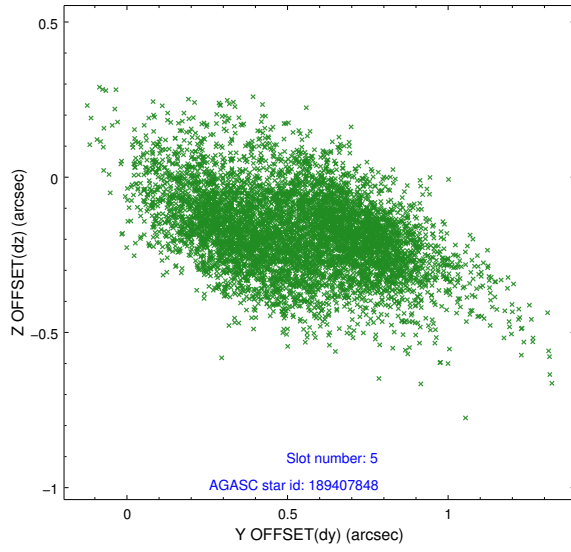
2.4.1 Slot 3



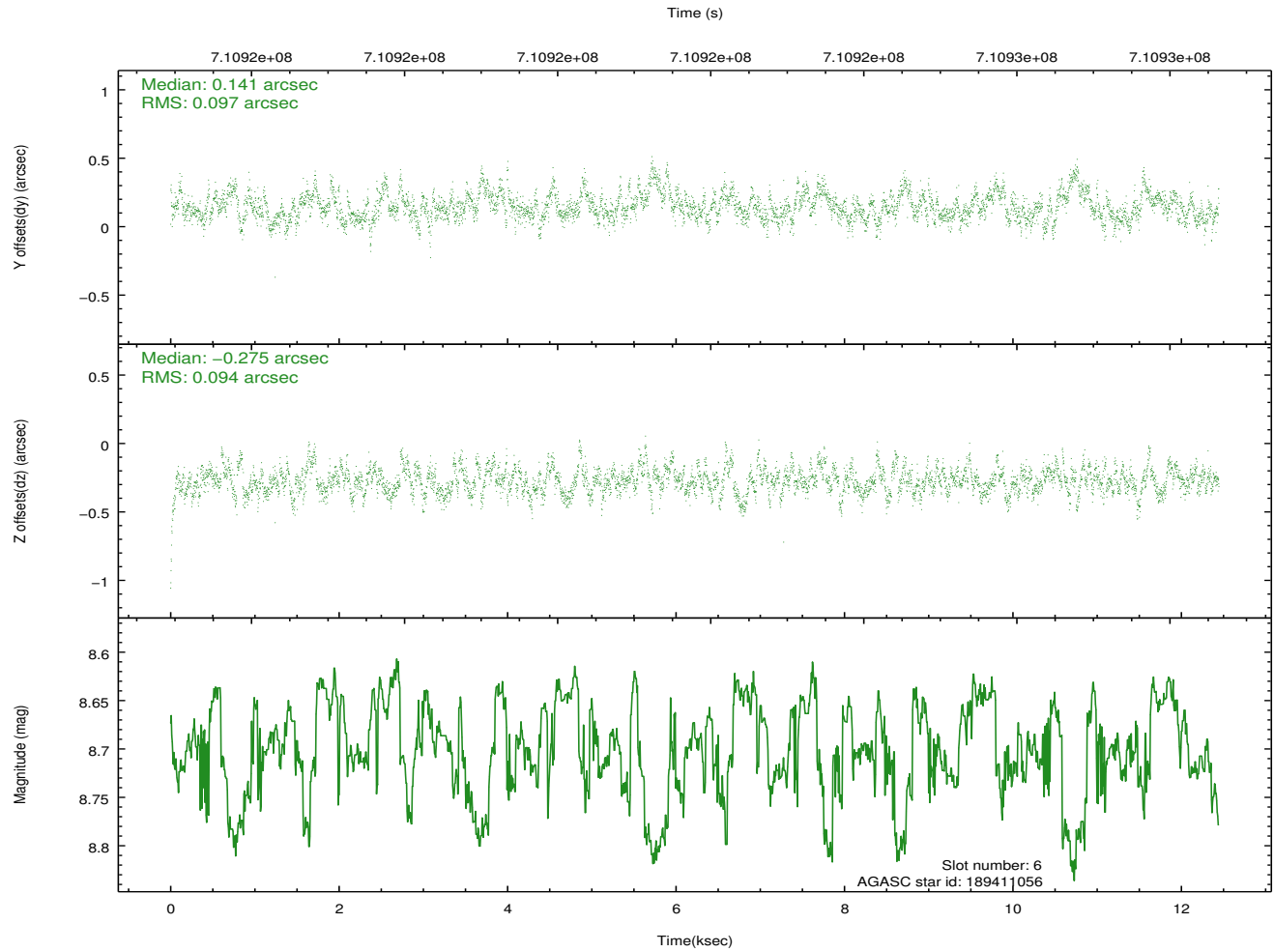
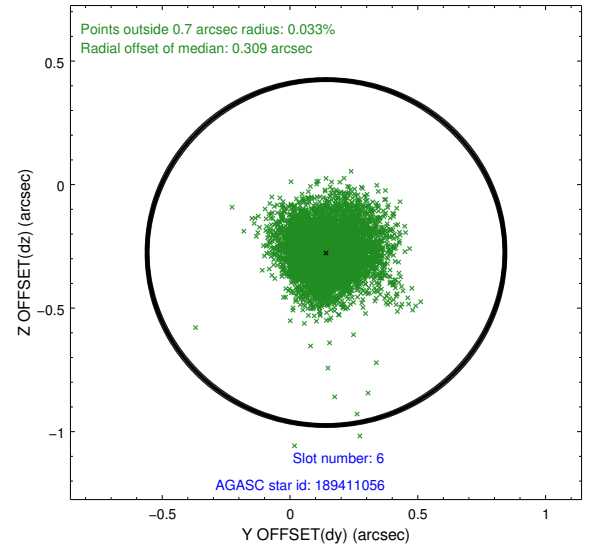
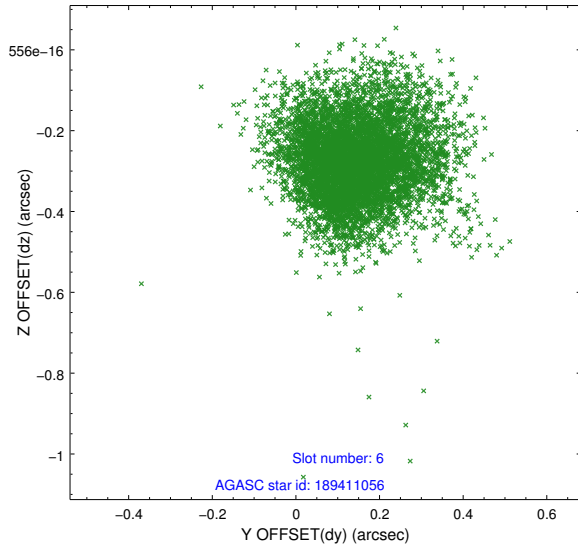
2.4.2 Slot 4



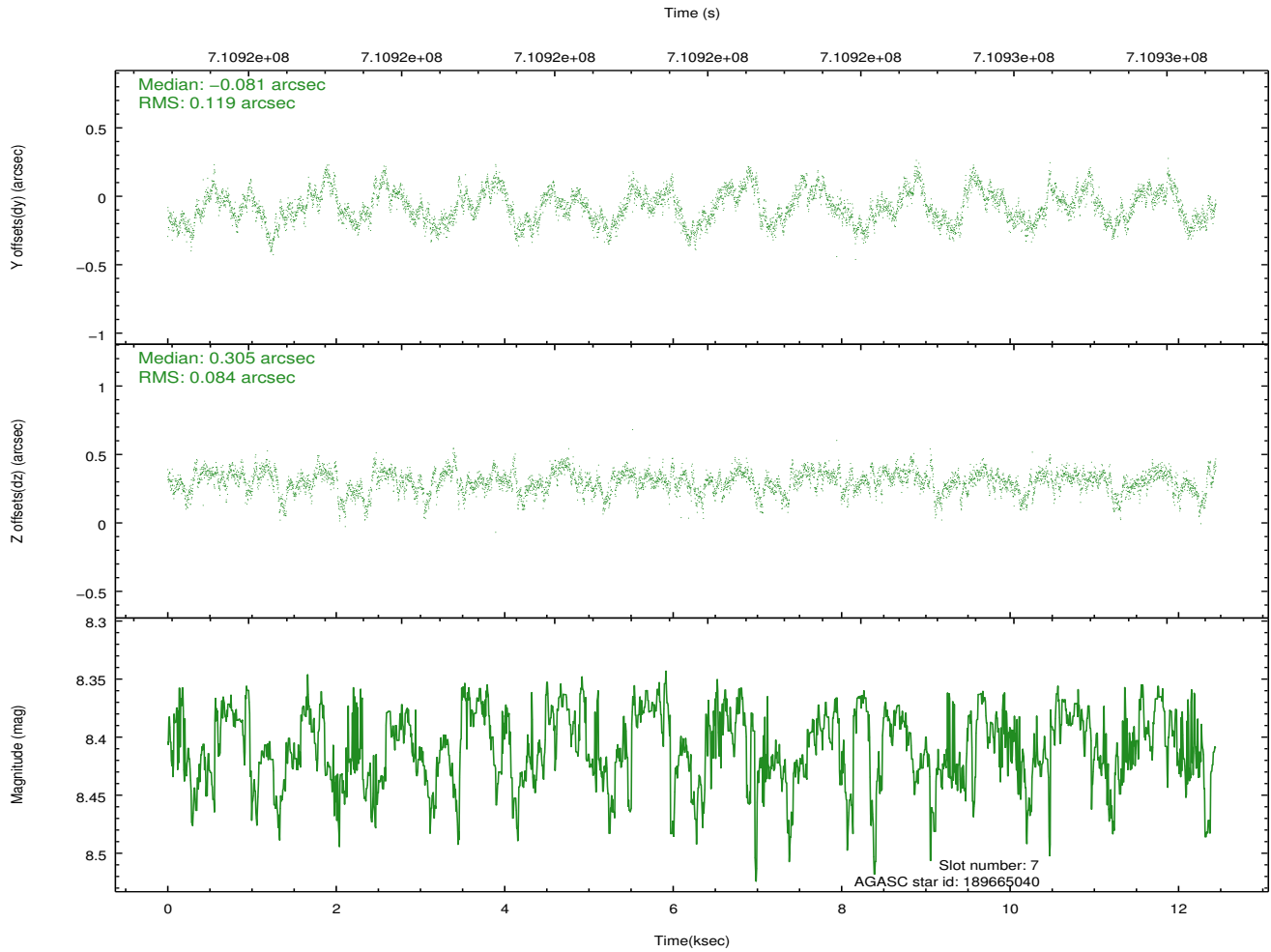
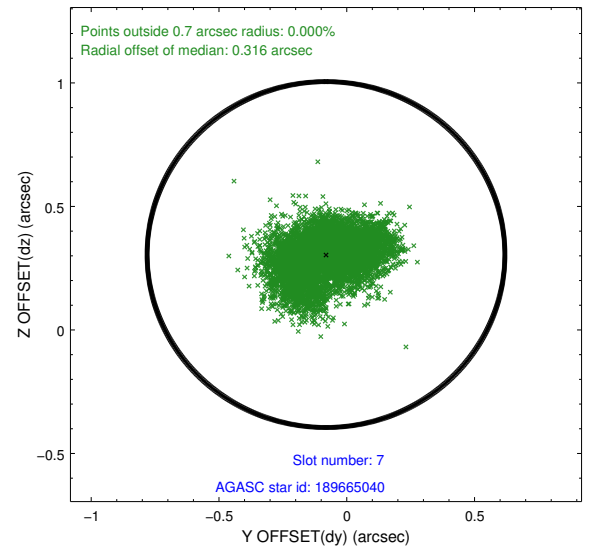
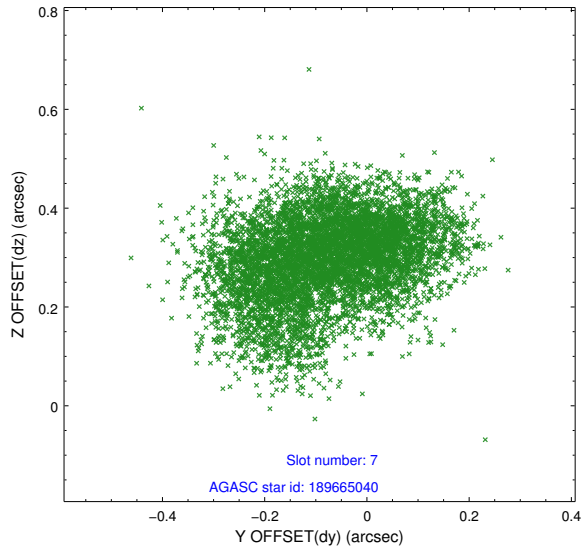
2.4.3 Slot 5



2.4.4 Slot 6

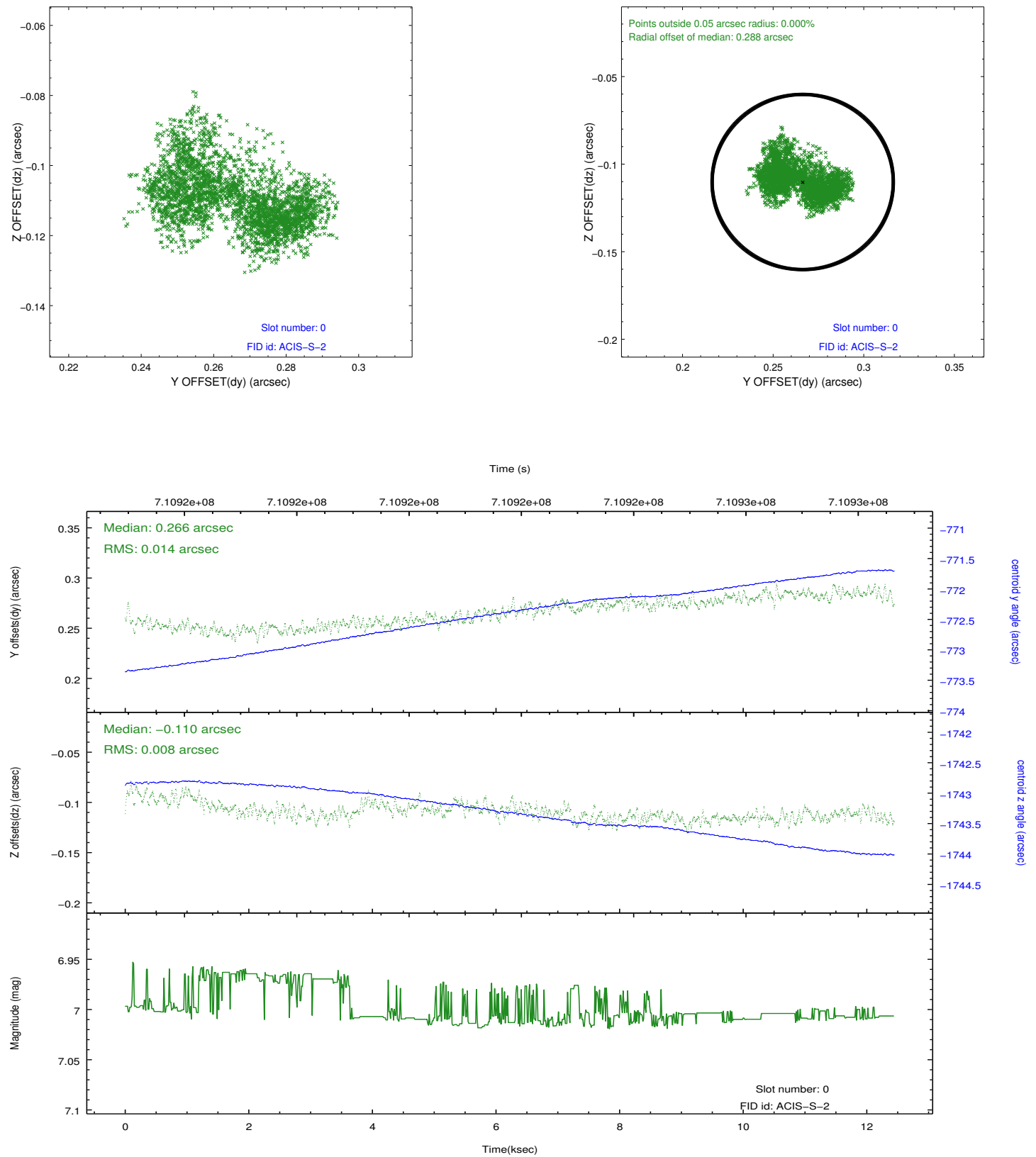


2.4.5 Slot 7

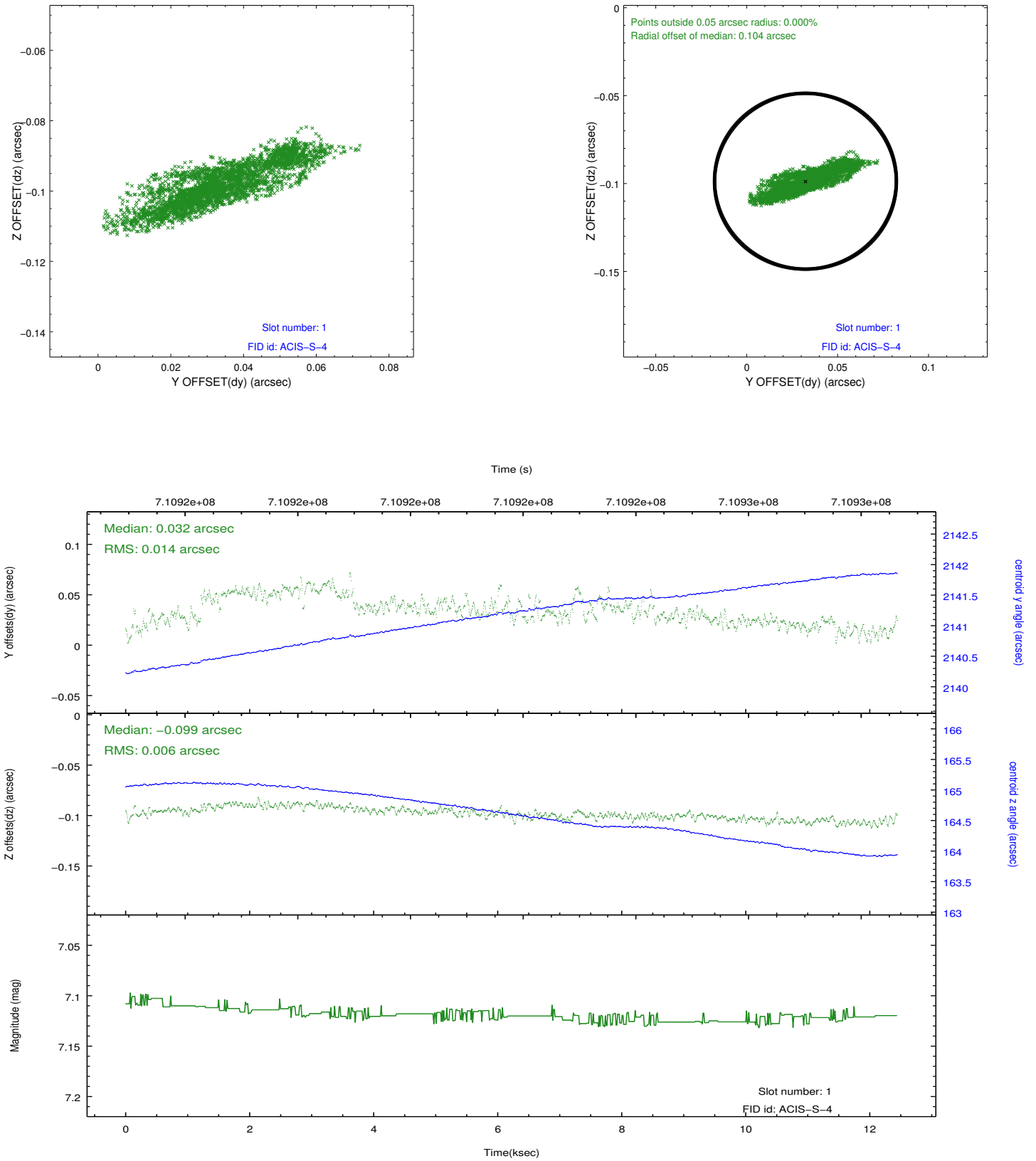


2.5 FID Slots

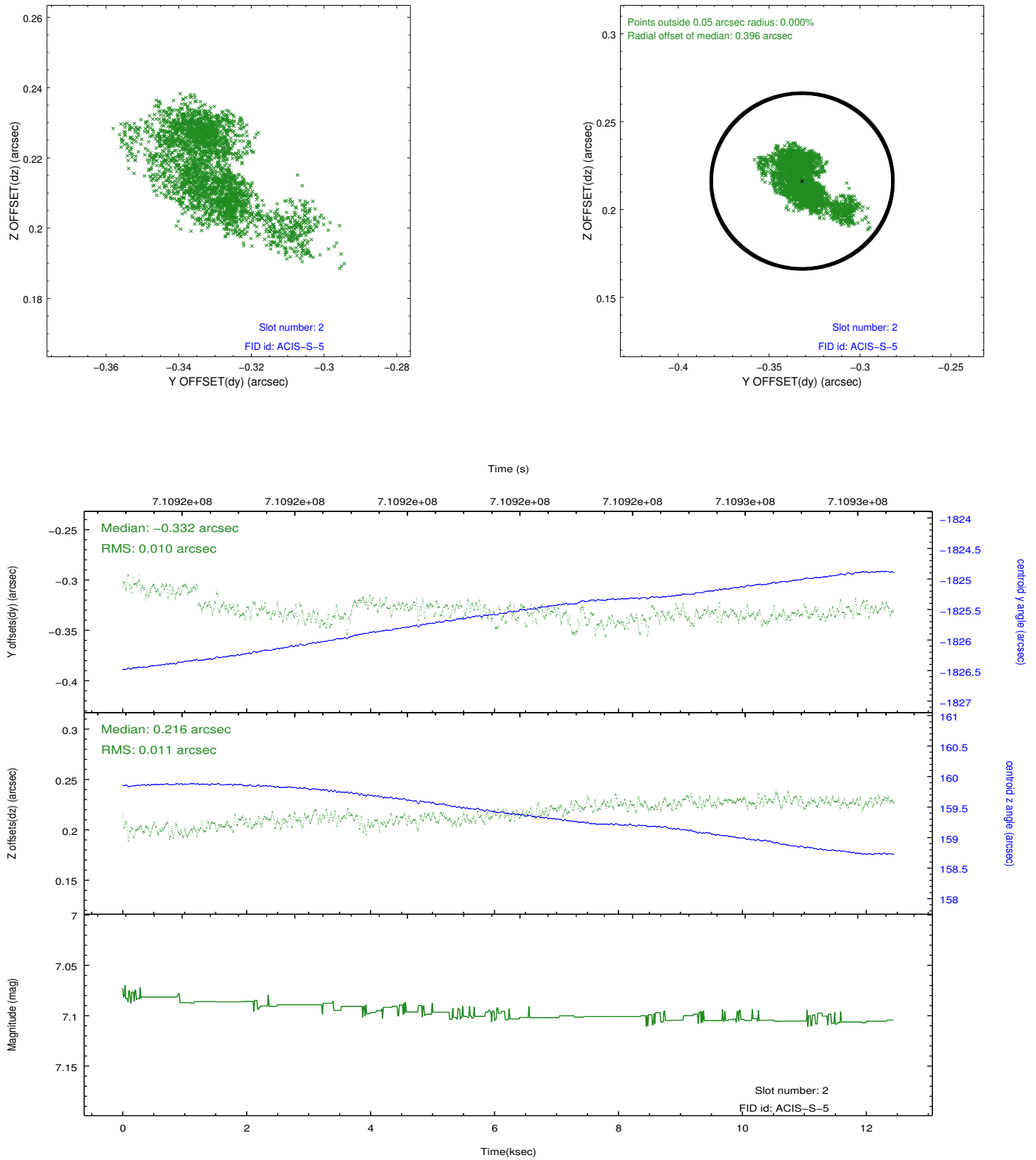
2.5.1 Slot 0



2.5.2 Slot 1



2.5.3 Slot 2



A Summary

A.1 Status

V&V Scientist	Beth Sundheim
V&V Date (YYYY-MM-DD)	2020.07.12
V&V Edition	1
V&V Disposition and Status	OK
V&V Charge Time	12.356394037724

A.2 Comments