

V&V Reference Report

L2 ASCDS Version : 10.8.1

Observation 23140 - L2 Version 1
Chandra X-Ray Center

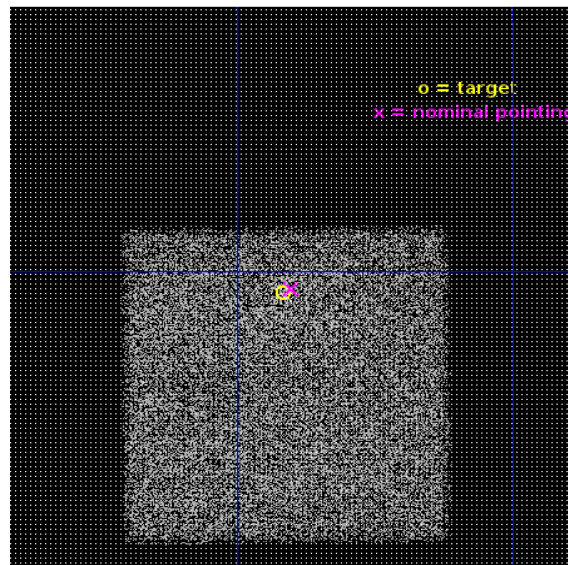
L2 Processing Date : Feb 15 2020

Contents

1	Front	2
2	OBI	3
2.1	OBI	3
2.1.1	Images	3
2.1.2	Bias	3
2.1.3	Parameters	4
2.1.4	Events	4
2.2	Compared Parameters	5
2.3	Aspect	6
2.4	Star Slots	9
2.4.1	Slot 3	9
2.4.2	Slot 4	10
2.4.3	Slot 5	11
2.4.4	Slot 6	12
2.4.5	Slot 7	13
2.5	FID Slots	14
2.5.1	Slot 0	14
2.5.2	Slot 1	15
2.5.3	Slot 2	16
A	Summary	17
A.1	Status	17
A.2	Comments	17

1 Front

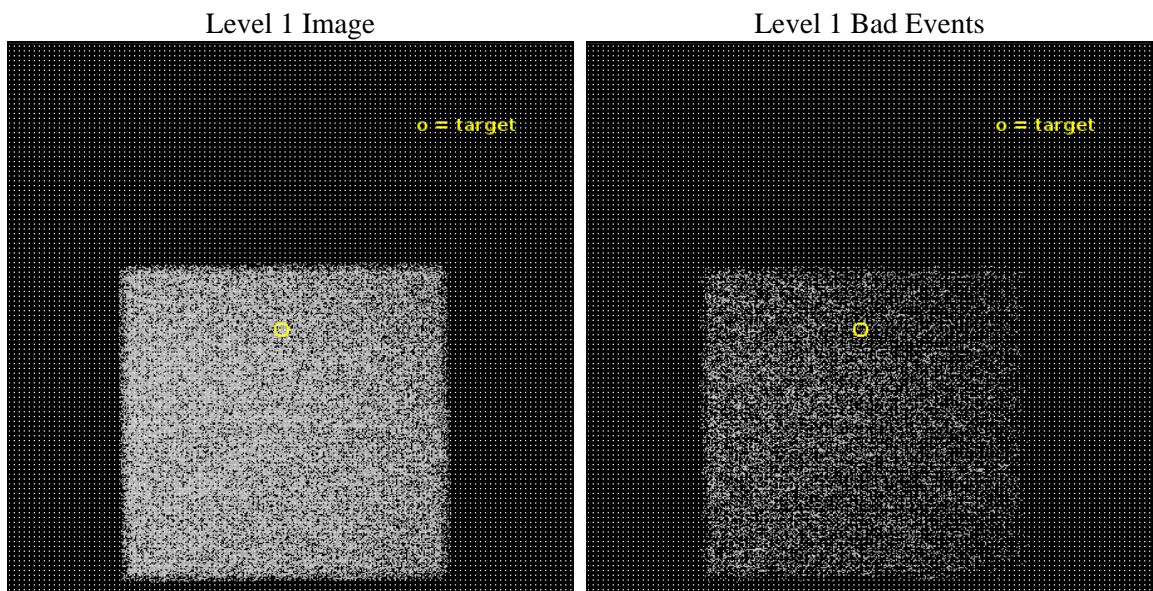
seq_num	503199	Sequence number
obs_id	23140	Observation id
title	The nearby TypeIc/Ic-BL SN2020oi in M100 (d~16 Mpc)	Proposal title
observer	Michael Stroh	Principal investigator
object	SN2020oi	Source name
dtcycle	0	
cycle	P	events from which exps? Prim/Second/Both
ra_targ	185.728833	Observer's specified target RA [deg]
dec_targ	15.823625	Observer's specified target Dec [deg]
ra_nom	185.72503109661	Nominal RA [deg]
dec_nom	15.825583150212	Nominal Dec [deg]
roll_nom	89.397027385788	Nominal Roll [deg]
revision	1	Processing version of data
ontime	10090.829369903	Sum of GTIs [s]
livetime	9954.6497611698	Livetime [s]
ontime7	10090.829369903	Sum of GTIs [s]
l2events	43203	Number of level 2 events



2 OBI

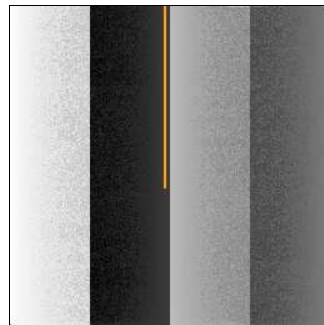
2.1 OBI

2.1.1 Images



2.1.2 Bias

Chip 7



2.1.3 Parameters

obi_num	0	Obi number	sched_exp_time	10000.000000	[s] Scheduled observation exposure time
ascdsver	10.8.1	Processing system revision	ontime	10090.829369903	Sum of GTIs [s]
caldsver	4.8.4.2	 	ontime7	10090.829369903	Sum of GTIs [s]
date	2020-02-15T14:33:28	Date and time of file creation	l1events	102213	Number of level 1 events
revision	1	Processing version of data			

2.1.4 Events

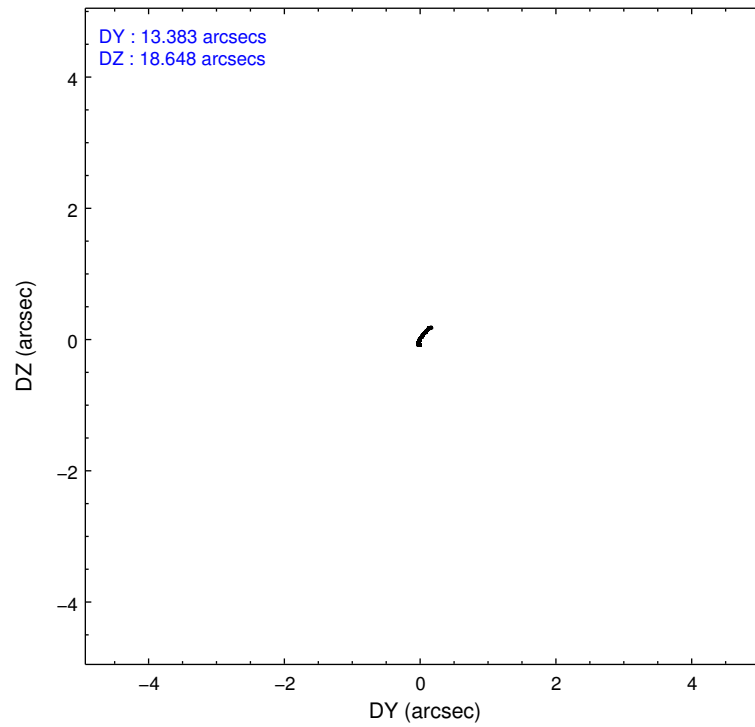
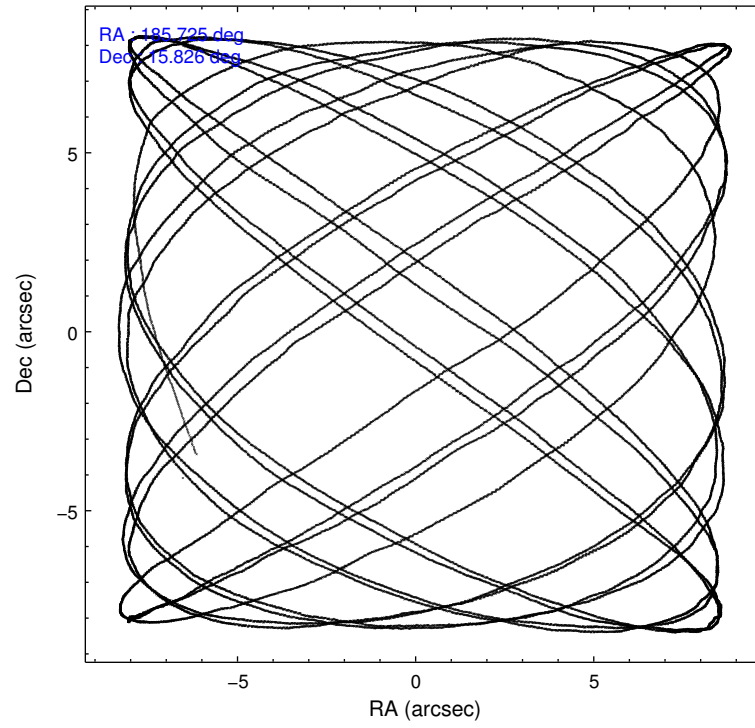
	ccd 7
level 1 events	102213
rejected events	57857
rejected %	56%

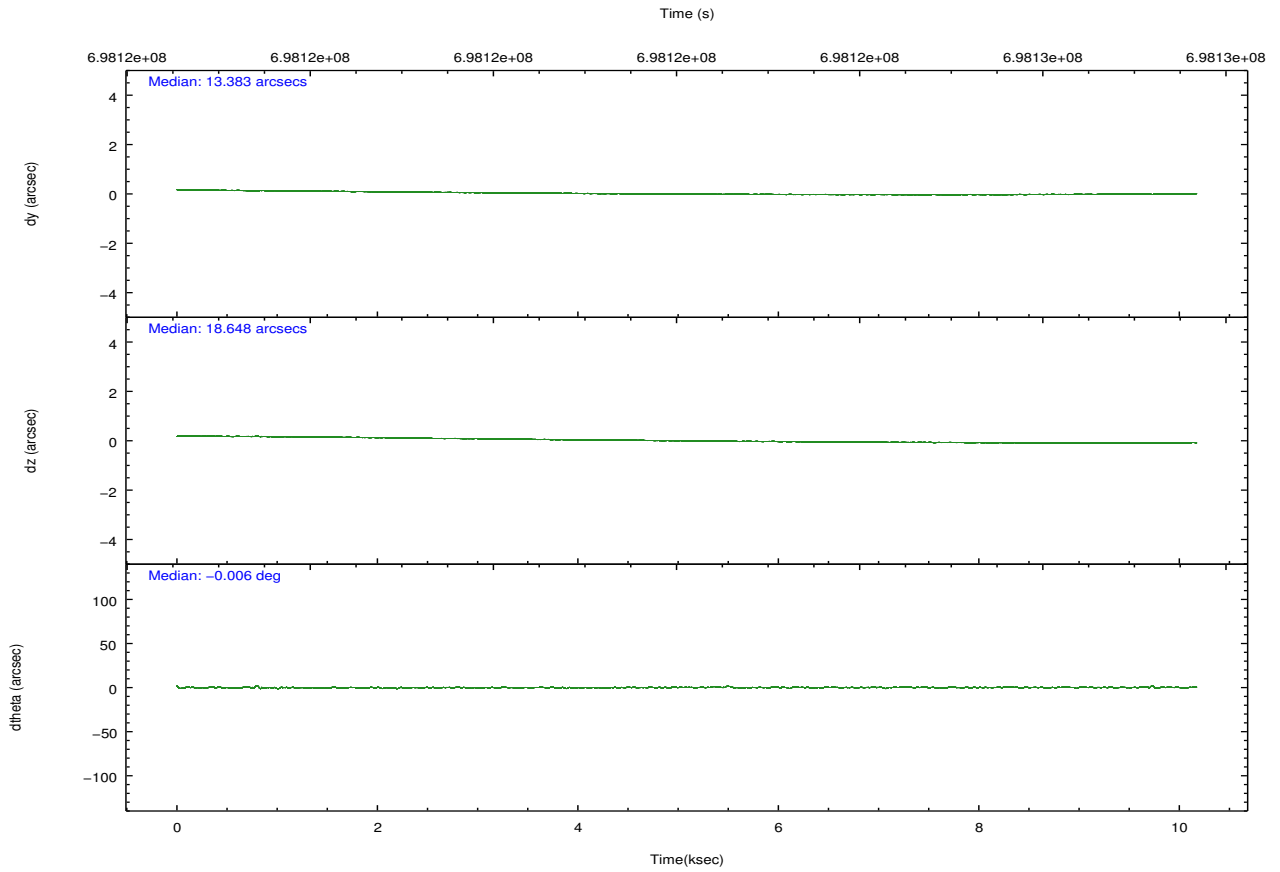
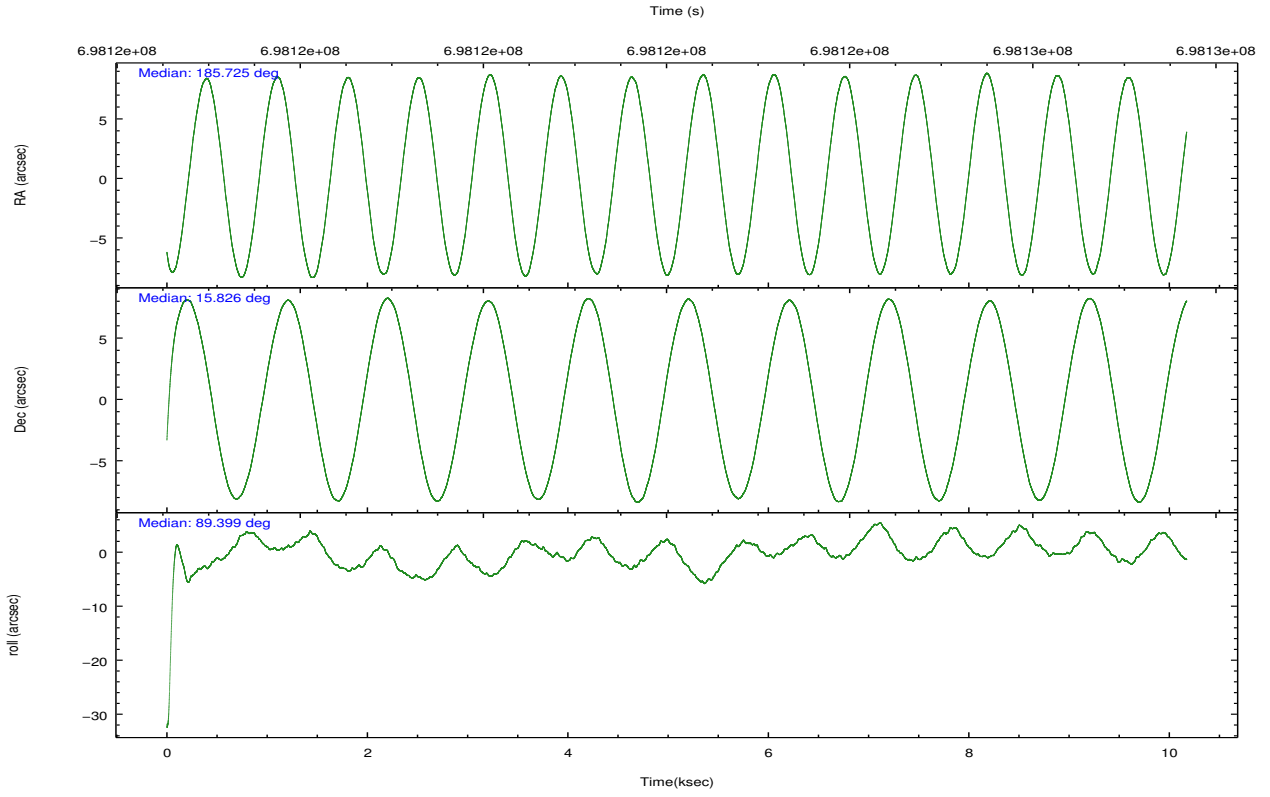
	ccd 7
grade 0 events	3652
	3%
grade 1 events	159
	0%
grade 2 events	9393
	9%
grade 3 events	3499
	3%
grade 4 events	3313
	3%
grade 5 events	9317
	9%
grade 6 events	24521
	23%
grade 7 events	48359
	47%

2.2 Compared Parameters

Parameter	Planned	Actual	Parameter	Planned	Actual
Instrument	ACIS	ACIS	Obspar format version number	7	7
Detector	ACIS-7	ACIS-7	Obspar file type	PREDICTED	ACTUAL
Grating	NONE	NONE	Obspar update status	NONE	UPDATED
Data mode	VFAINT	VFAINT	Number of optional ACIS chips dropped	0	0
Observation mode	POINTING	POINTING	On-chip summing requested	N	N
[deg] Pointing RA	185.739403	185.7250310966128	Subarray requested	NONE	NONE
[deg] Pointing Dec	15.801833	15.82558315021168	Alternating exposures requested	N	N
[deg] Pointing Roll	89.236524	89.39702738578838	[s] Primary exposure time	0.000000	3
[s] Window start time (MET)	695692869.184000	695692869.184000			
[s] Window stop time (MET)	696902469.184000	696902469.184000			
[mm] SIM focus pos	-0.684267	-0.6828225247311905			
[mm] SIM defocus	0	0.001444936568705701			
[mm] SIM translation stage pos	-190.132523	-190.1400660498719			
[mm] SIM translation stage offset	0	0.00754346686406393			
[s] Observation start time (MET)	698117197.184000	698116174.35352			
Observation start date	2020-02-15T01:25:28	2020-02-15T01:09:34			
[s] Observation end time (MET)	698127197.184000	698128304.20426			
Observation end date	2020-02-15T04:12:08	2020-02-15T04:31:44			
Read mode	TIMED	TIMED			

2.3 Aspect



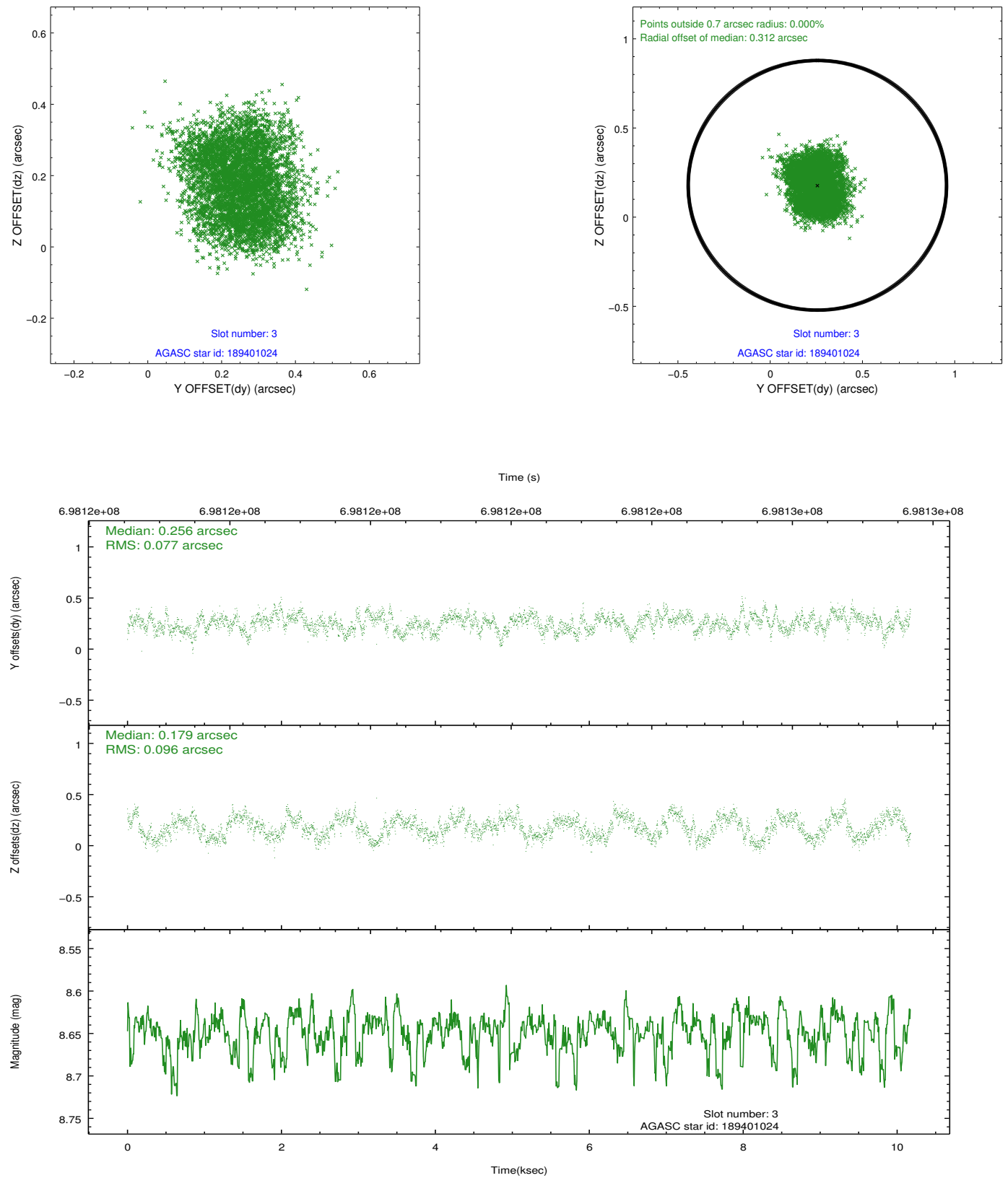


Slot Statistics

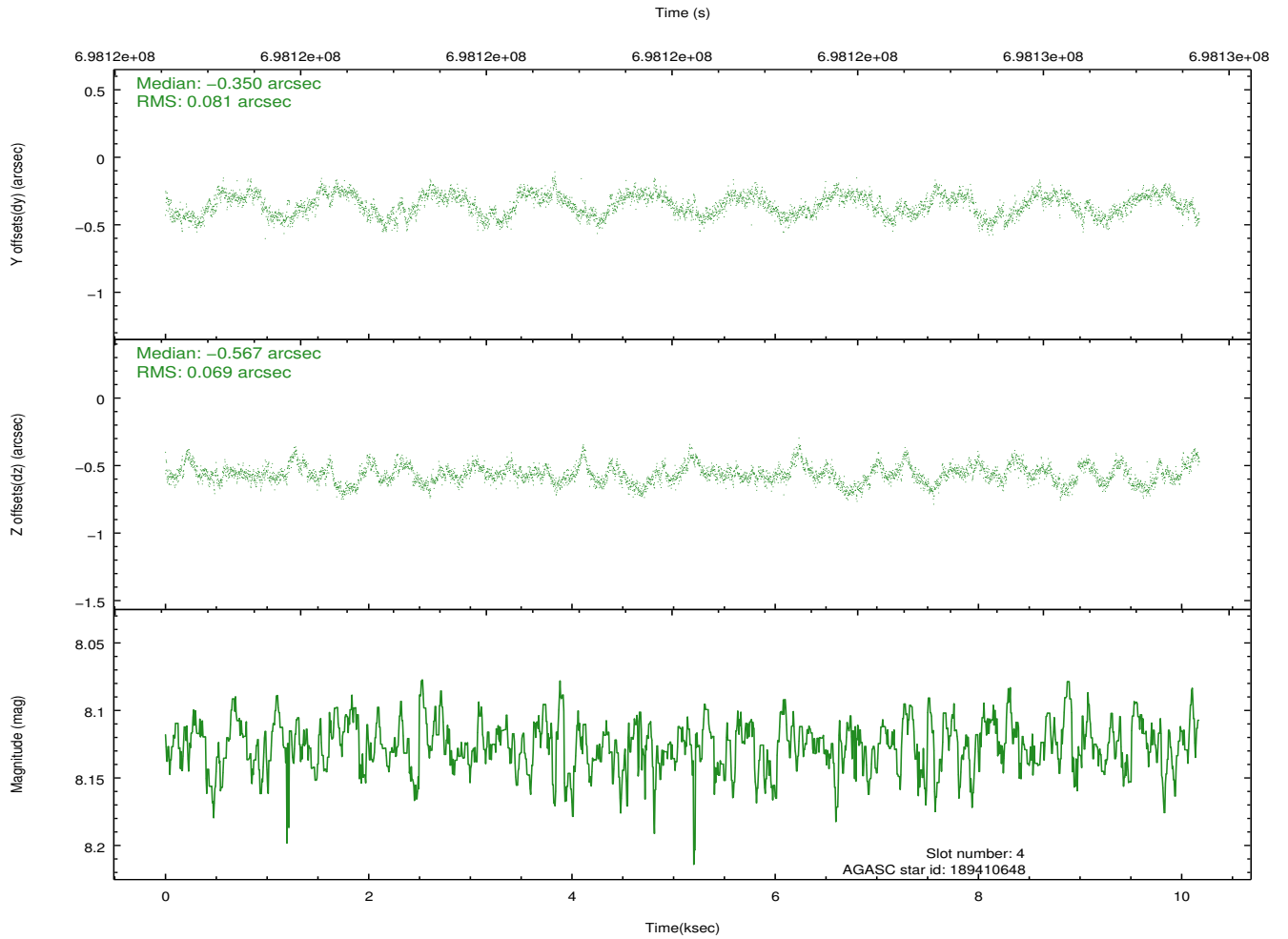
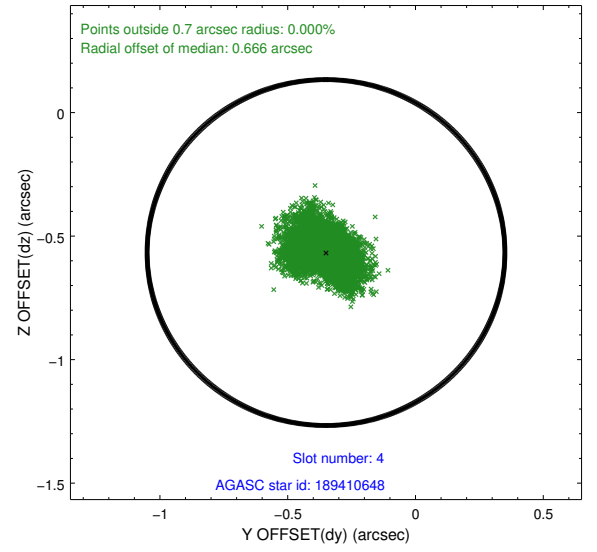
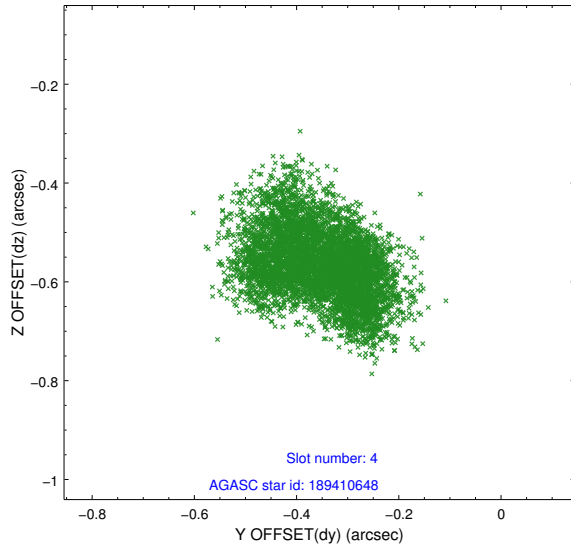
pt	status	used	id	mag	n_pts	frac_pts	med_dy	med_dz	dr1	dr2	ra	dec	mean_y	mea
0	FID		ACIS-S-2	7.14	2482	1.000	-0.252	-0.221	0.012	0.020	0.000000	0.000000	-766.53	-1740
1	FID		ACIS-S-4	7.28	2482	1.000	0.768	0.181	0.006	0.012	0.000000	0.000000	2147.47	168
2	FID		ACIS-S-5	7.24	2482	1.000	-0.548	0.049	0.014	0.021	0.000000	0.000000	-1819.06	162
3	GUIDE	used	189401024	8.65	4955	1.000	0.256	0.179	0.135	0.199	185.977630	15.617765	-651.02	-833
4	GUIDE	used	189410648	8.13	4961	1.000	-0.350	-0.567	0.116	0.178	185.747145	16.243433	1588.93	-6
5	GUIDE	used	189411792	7.90	4963	1.000	0.020	0.176	0.158	0.239	186.226855	16.194788	1439.12	-1664
6	GUIDE	used	189412616	8.85	4962	1.000	-0.046	0.001	0.125	0.202	185.986854	16.417322	2222.96	-823
7	GUIDE	used	189413016	8.11	4961	1.000	0.119	0.197	0.119	0.210	186.364497	16.171398	1362.59	-2142

2.4 Star Slots

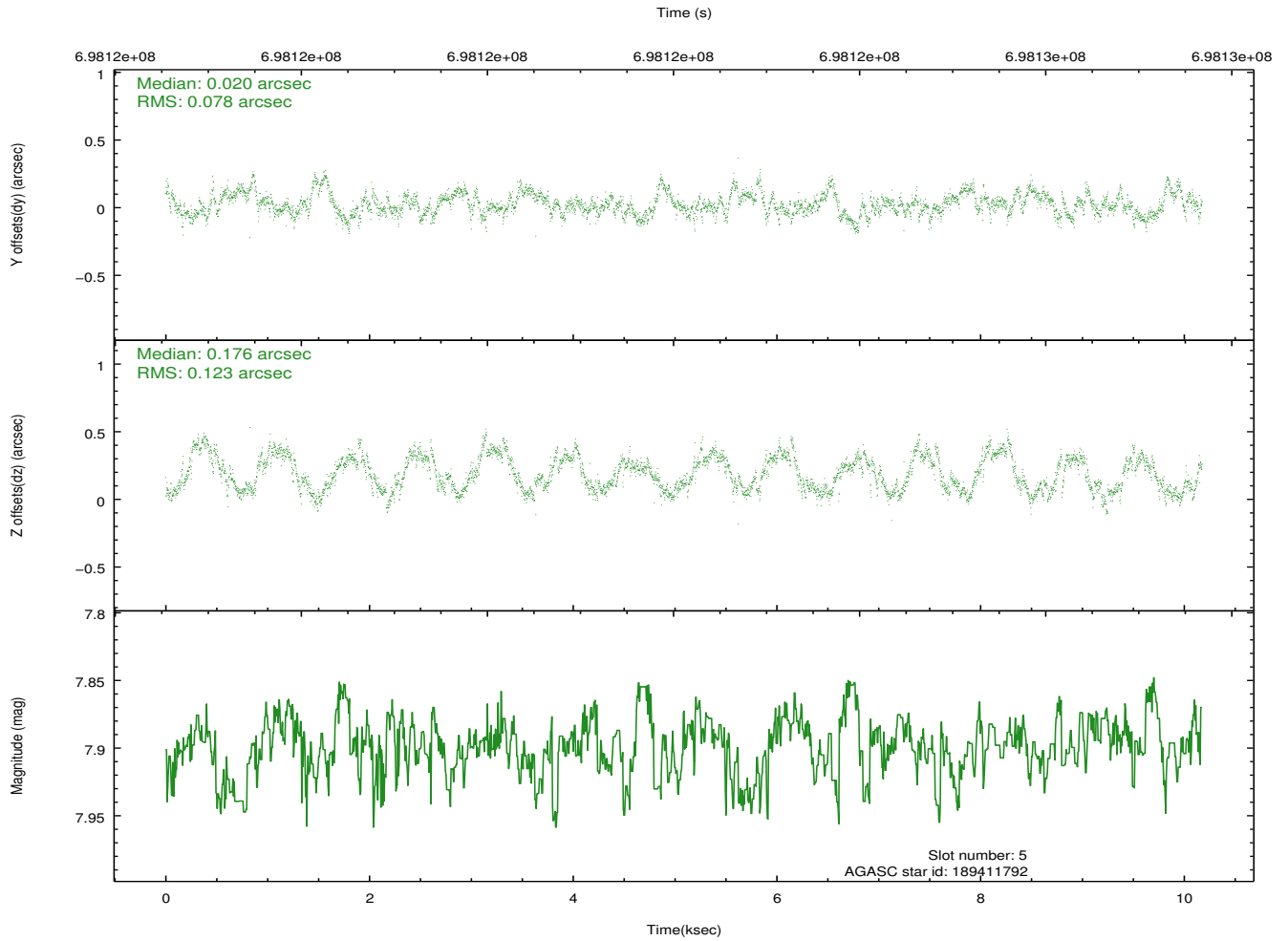
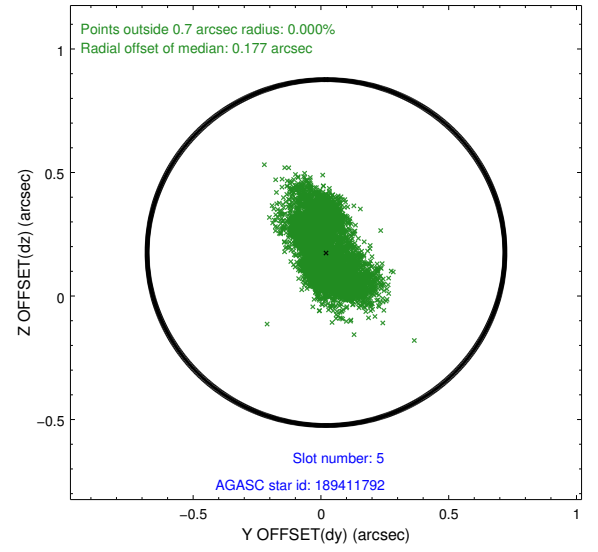
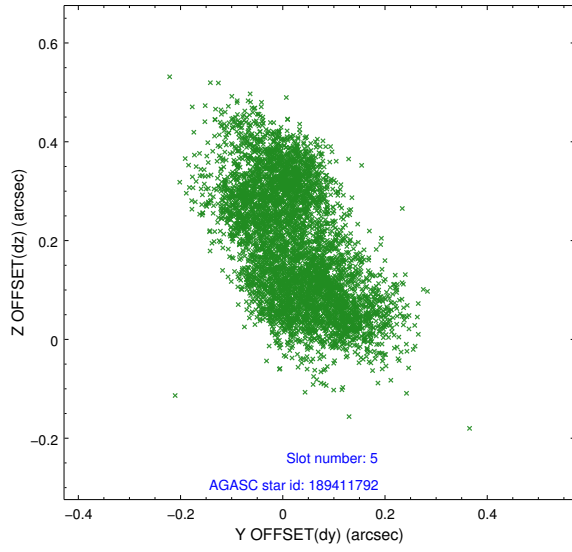
2.4.1 Slot 3



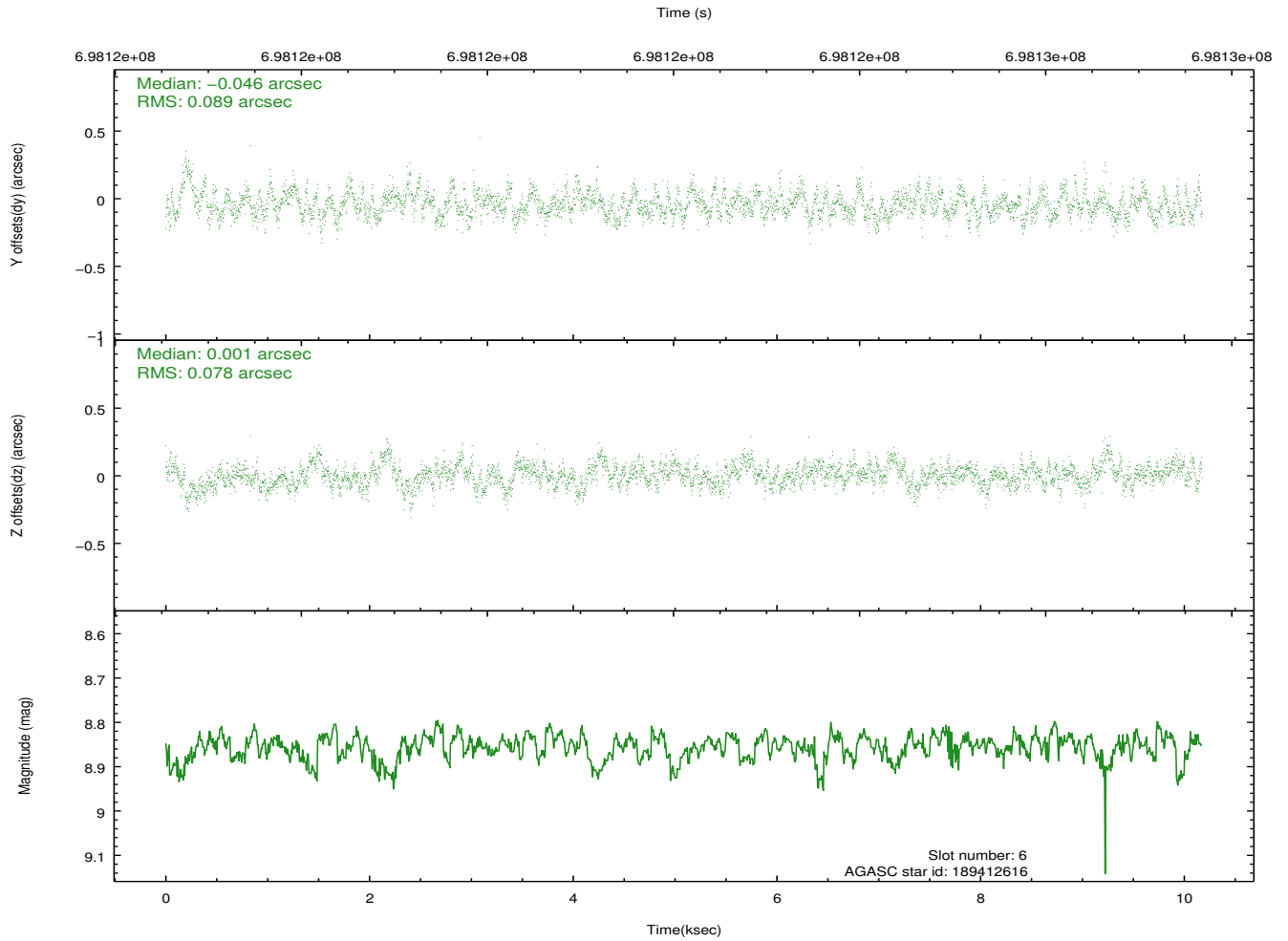
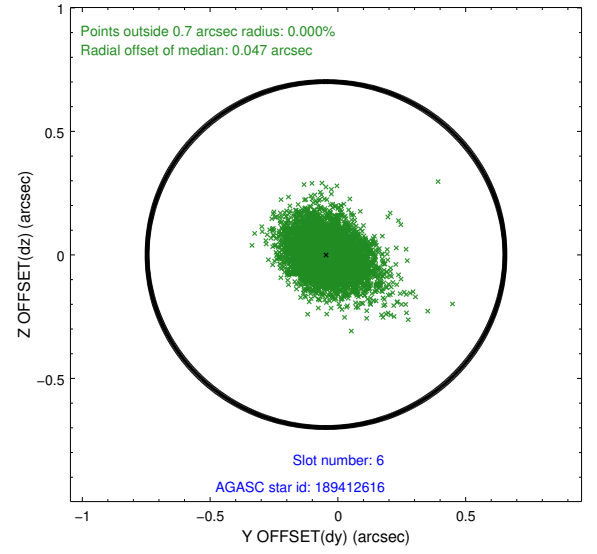
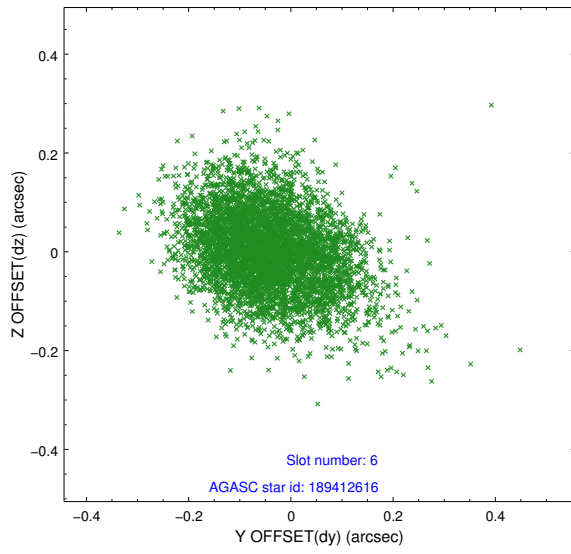
2.4.2 Slot 4



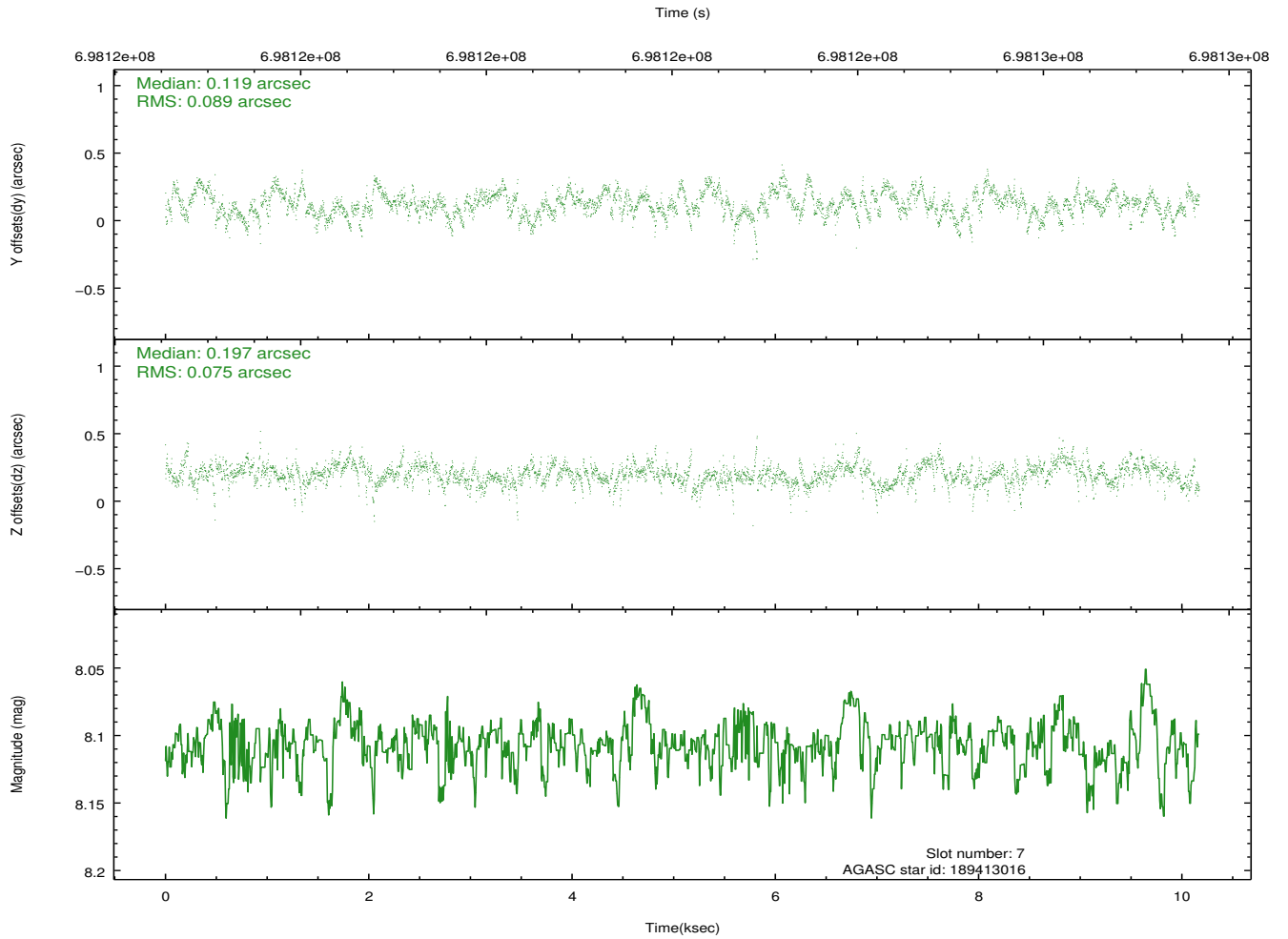
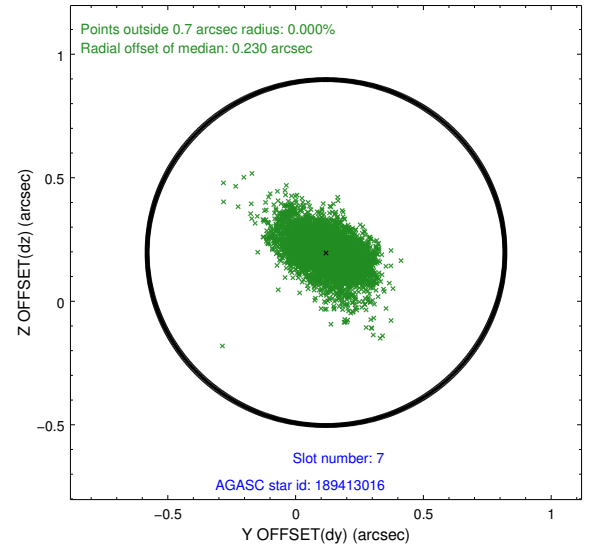
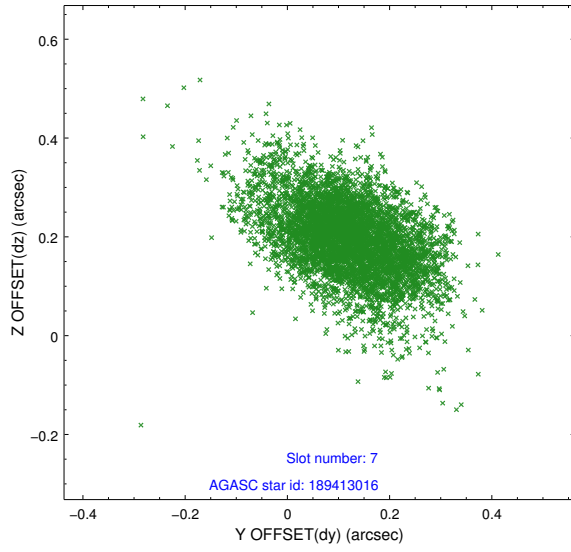
2.4.3 Slot 5



2.4.4 Slot 6

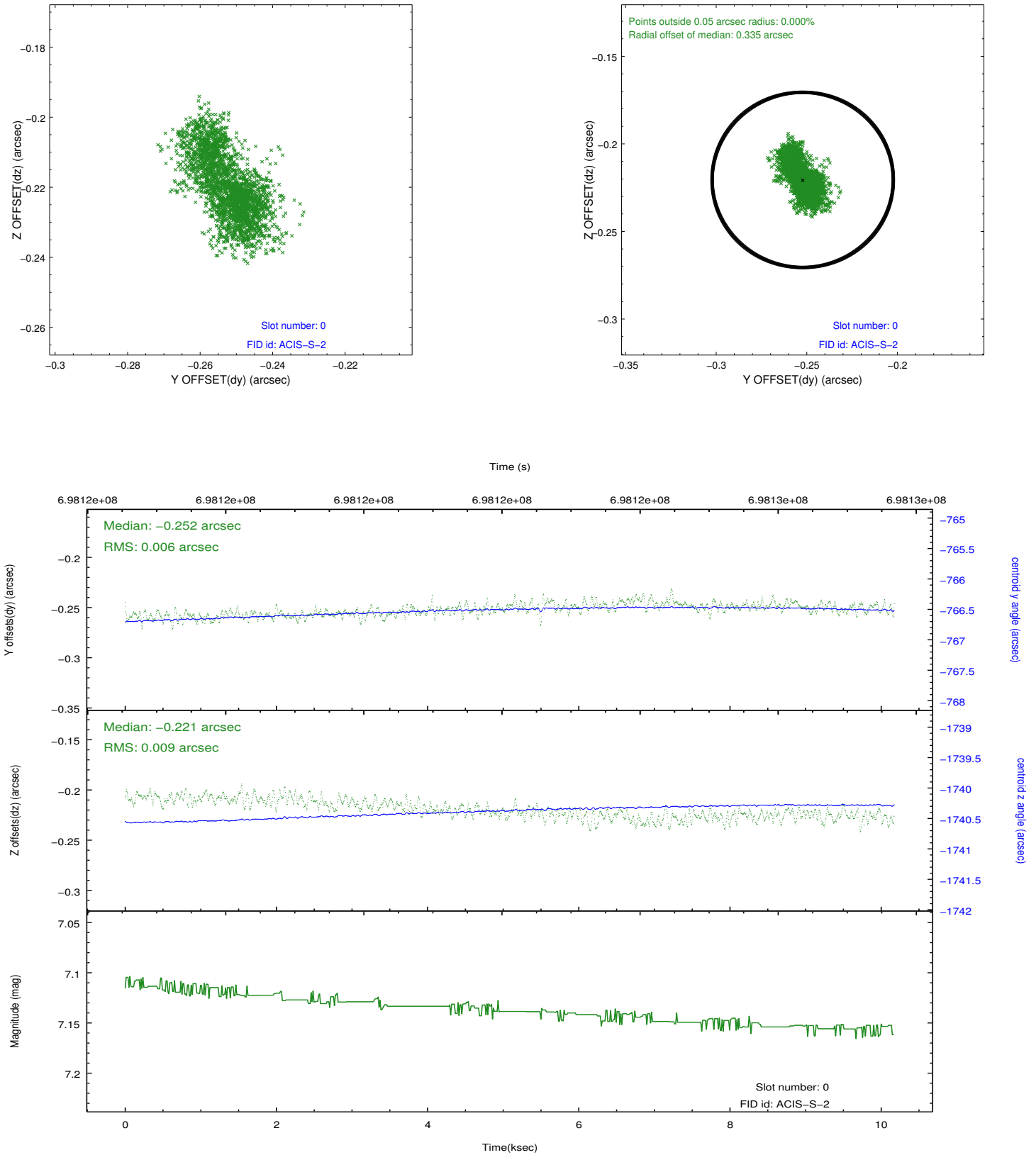


2.4.5 Slot 7

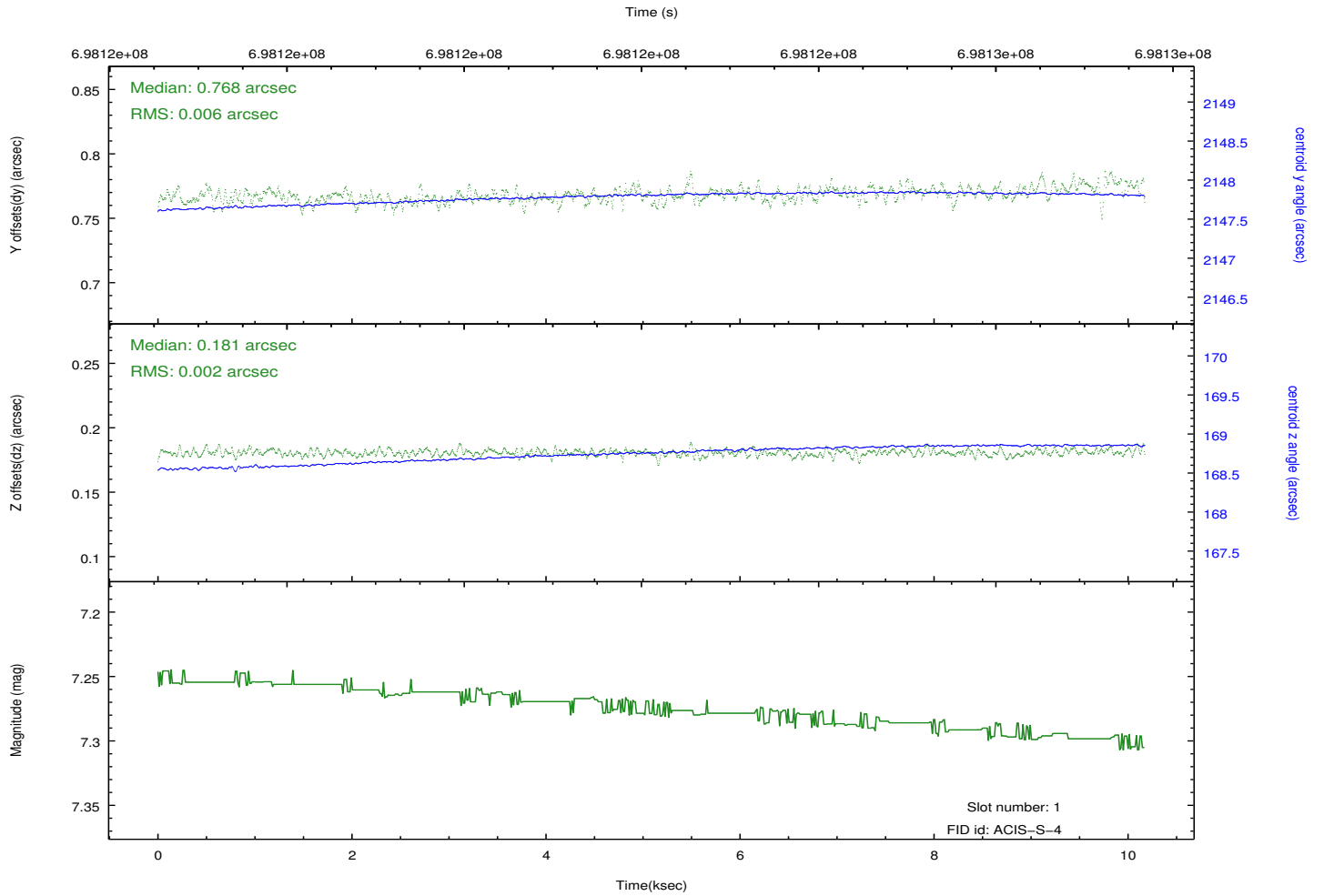
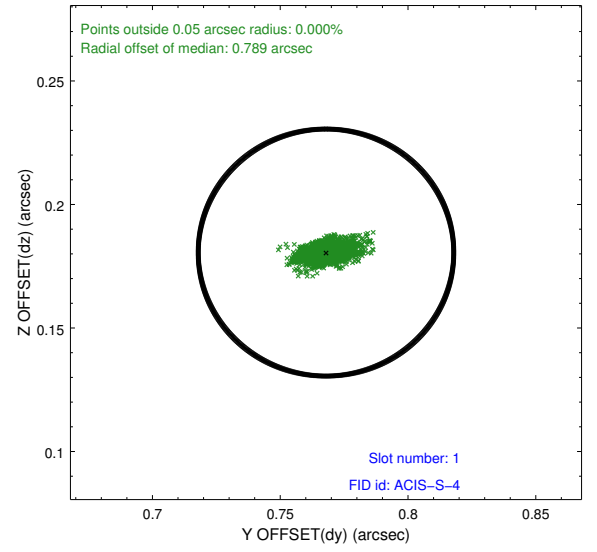
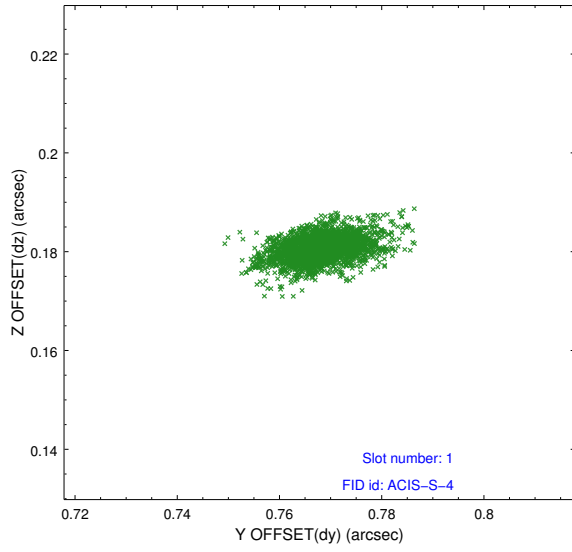


2.5 FID Slots

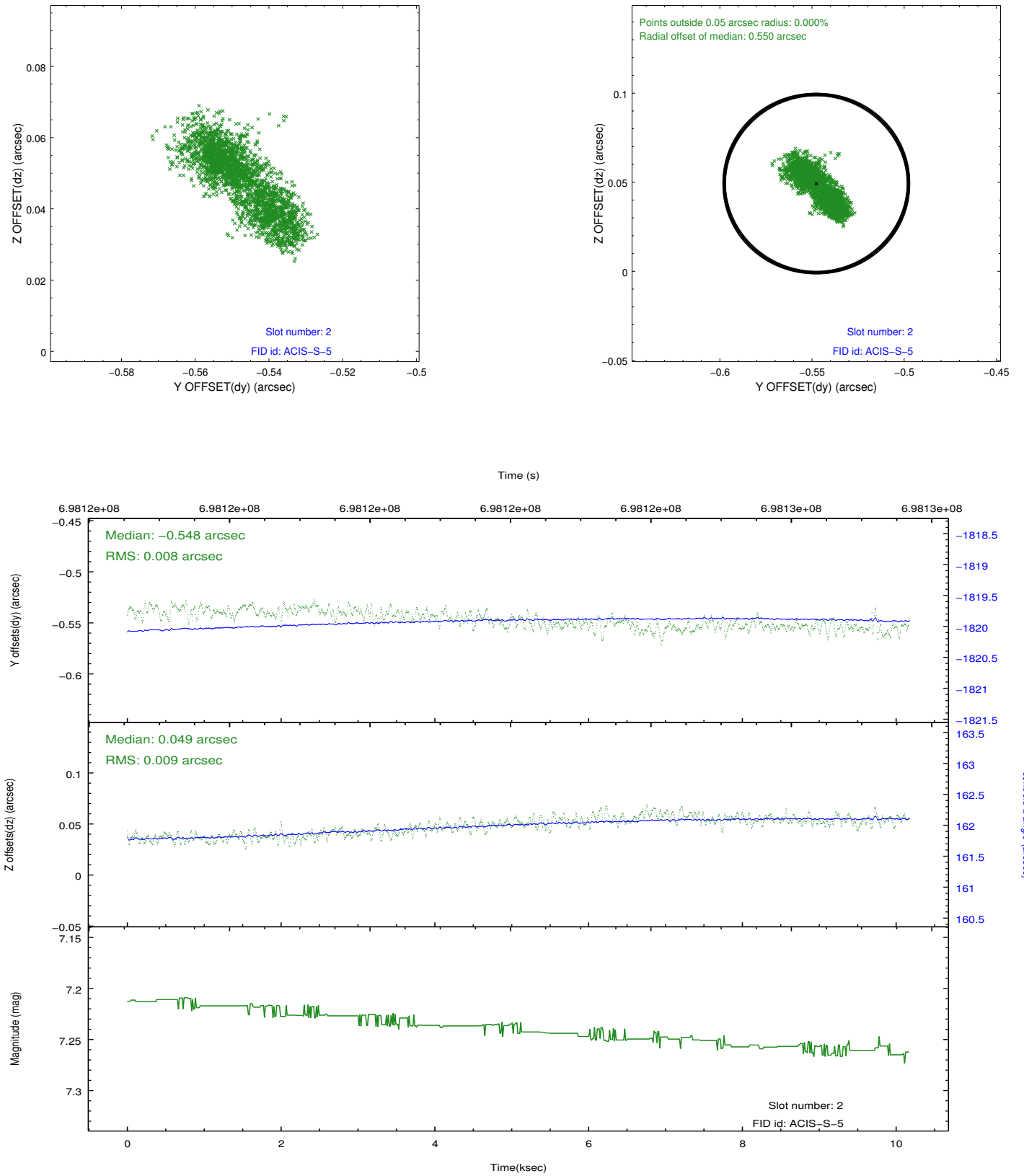
2.5.1 Slot 0



2.5.2 Slot 1



2.5.3 Slot 2



A Summary

A.1 Status

V&V Scientist	Francesca Civano
V&V Date (YYYY-MM-DD)	2020.02.15
V&V Edition	1
V&V Disposition and Status	OK
V&V Charge Time	10.090829369903

A.2 Comments

window constraint met