

# V&V Reference Report

## L2 ASCDS Version : 10.8.1

Observation 22344 - L2 Version 1  
Chandra X-Ray Center

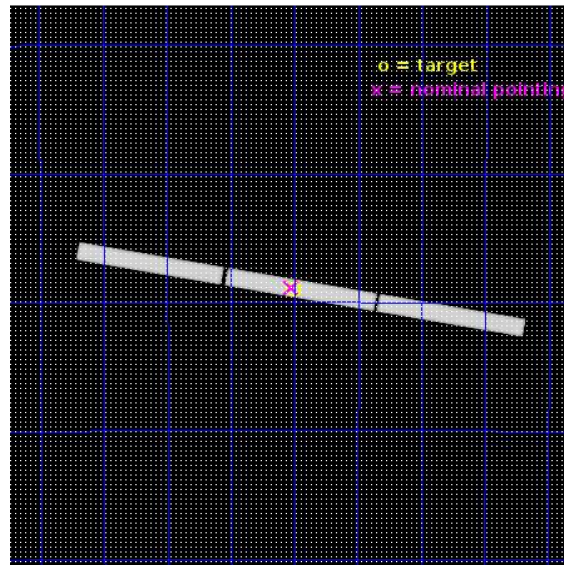
L2 Processing Date : Oct 14 2019

## Contents

<b>1</b>	<b>Front</b>	<b>2</b>
<b>2</b>	<b>OBI</b>	<b>3</b>
2.1	OBI . . . . .	3
2.1.1	Images . . . . .	3
2.1.2	Parameters . . . . .	4
2.1.3	Events . . . . .	4
2.2	Compared Parameters . . . . .	5
2.3	Aspect . . . . .	6
2.4	Star Slots . . . . .	9
2.4.1	Slot 3 . . . . .	9
2.4.2	Slot 4 . . . . .	10
2.4.3	Slot 5 . . . . .	11
2.4.4	Slot 6 . . . . .	12
2.4.5	Slot 7 . . . . .	13
2.5	FID Slots . . . . .	14
2.5.1	Slot 0 . . . . .	14
2.5.2	Slot 1 . . . . .	15
2.5.3	Slot 2 . . . . .	16
<b>3</b>	<b>Gratings</b>	<b>17</b>
3.1	LETG Arm . . . . .	17
<b>A</b>	<b>Summary</b>	<b>19</b>
A.1	Status . . . . .	19
A.2	Comments . . . . .	19

# 1 Front

seq_num	201299	Sequence number
obs_id	22344	Observation id
title	Probing the dynamo in fully convective stellar twins	Proposal titl
observer	Scott Wolk	Principal investigator
object	UV Cet	Source name
ra_targ	24.756792	Observer's specified target RA [deg]
dec_targ	-17.950311	Observer's specified target Dec [deg]
ra_nom	24.761963135575	Nominal RA [deg]
dec_nom	-17.944157909326	Nominal Dec [deg]
roll_nom	10.068889465872	Nominal Roll [deg]
revision	1	Processing version of data
ontime	17182.332275271	[s]
livetime	17007.456134433	Ontime multiplied by DTCOR
l2events	1595928	Number of level 2 events

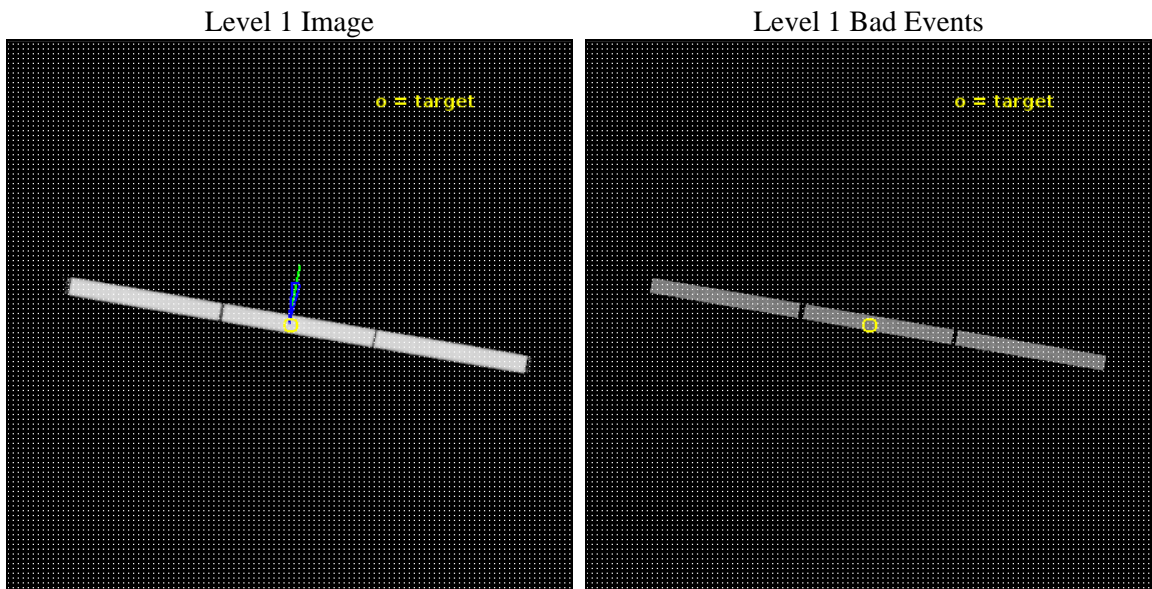




## 2 OBI

### 2.1 OBI

#### 2.1.1 Images



### 2.1.2 Parameters

obi_num	0	Obi number	sched_exp_time	17000.000000	[s] Scheduled observation exposure time
ascdsver	10.8.1	Processing system revision	ontime	17182.332285166	[s]
caldsver	4.8.4.2	&#160	l1events	2128669	Number of level 1 events
date	2019-10-14T13:06:19	Date and time of file creation	tgmethod	TGDETECT	Method used to create src1a file
revision	1	Processing version of data	zo_pos	(32420.45, 32687.74)	src1a sky pixel position

### 2.1.3 Events

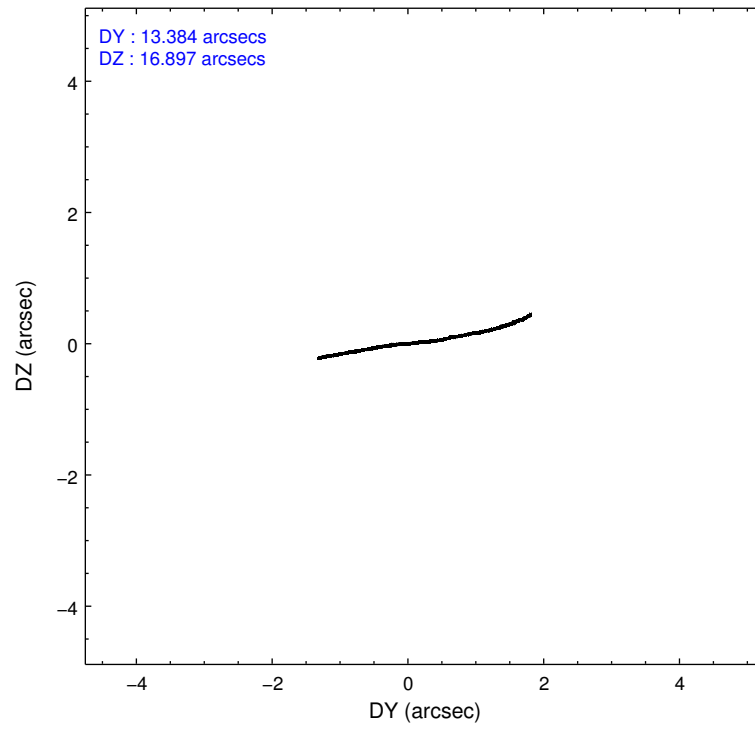
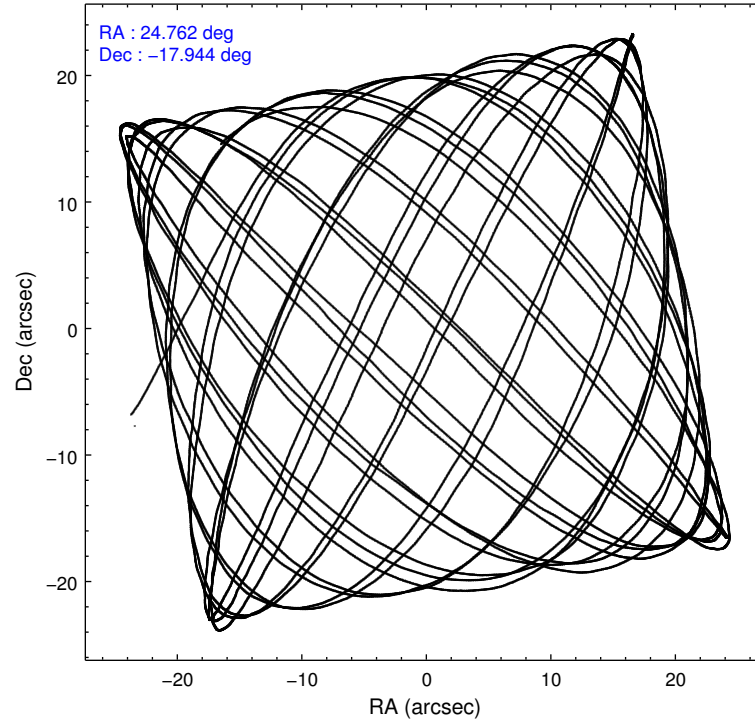
Level 1 Events

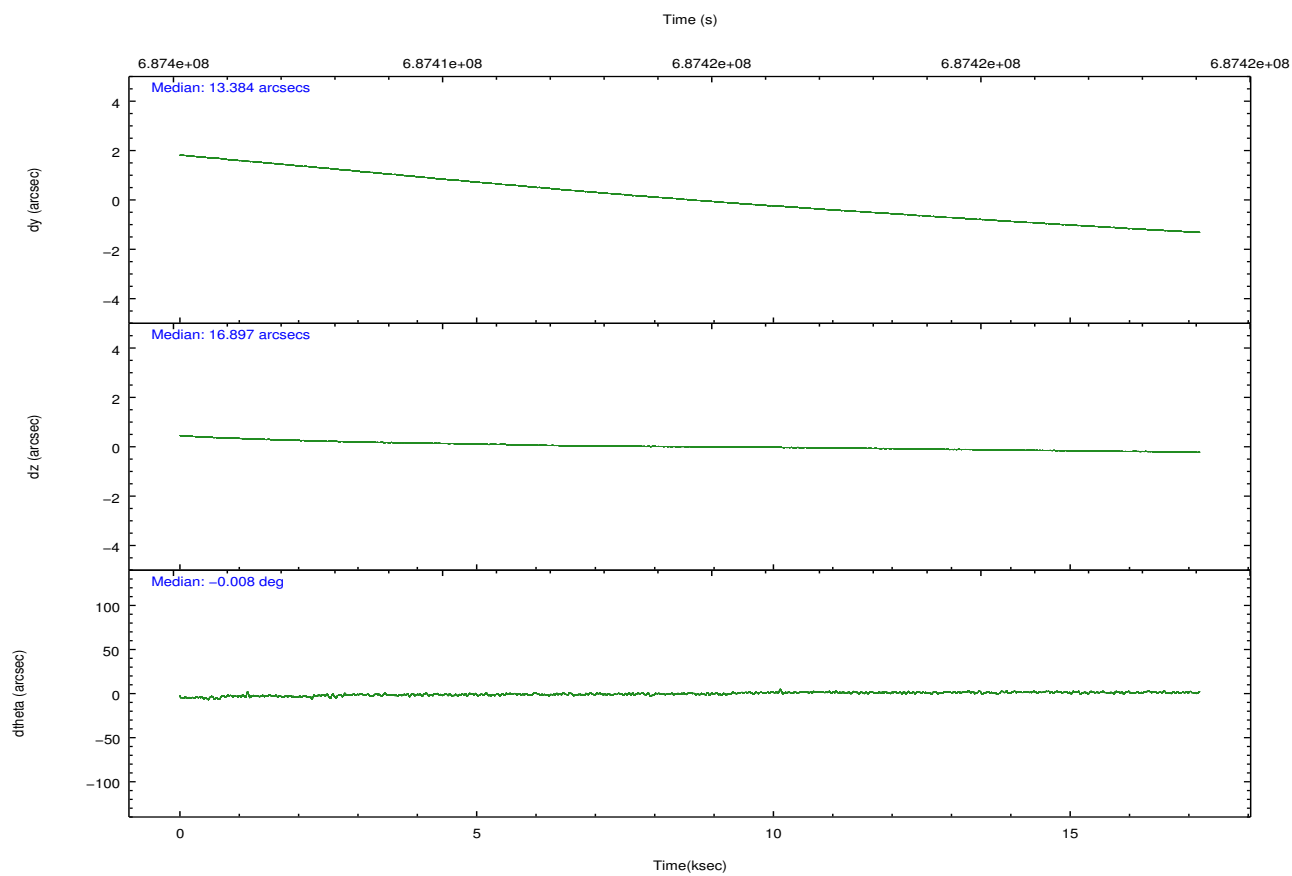
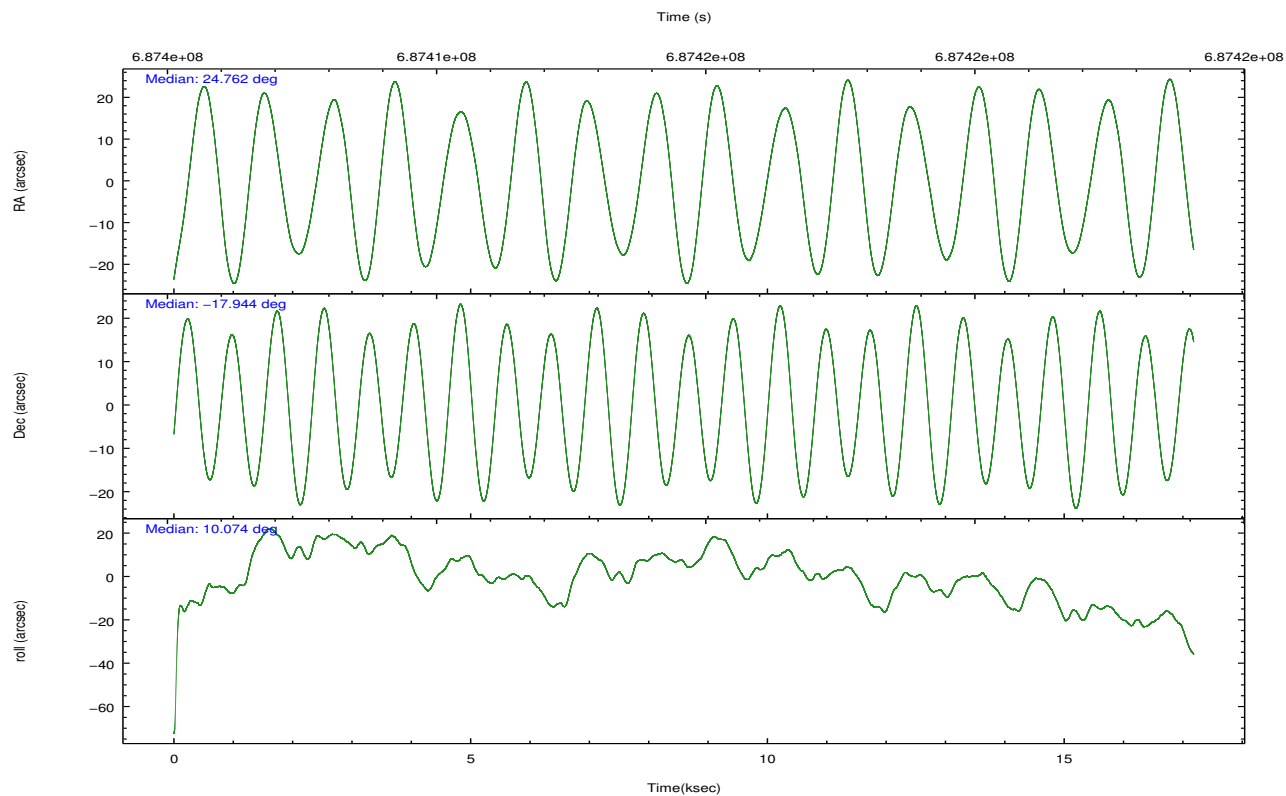
	<b>segment 1</b>	<b>segment 2</b>	<b>segment 3</b>
level 1 events	710110	712258	706301
rejected events	60009	59825	59332
rejected %	8%	8%	8%

## 2.2 Compared Parameters

Parameter	Planned	Actual	Parameter	Planned	Actual
Instrument	HRC	HRC	Obspar format version number	7	7
Detector	HRC-S	HRC-S	Obspar file type	PREDICTED	ACTUAL
Grating	LETG	LETG	Obspar update status	NONE	UPDATED
Data mode	OBSERVING	OBSERVING			
Observation mode	POINTING	POINTING			
[deg] Pointing RA	24.739658	24.76196313557536			
[deg] Pointing Dec	-17.963857	-17.94415790932647			
[deg] Pointing Roll	9.994714	10.06888946587206			
[deg] Roll angle	10.000000	10.000000			
[deg] Roll tolerance	5.000000	5.000000			
Roll constraint allows 180D rotation	N	N			
[mm] SIM focus pos	-1.429586	-1.428180813131781			
[mm] SIM defocus	0.1037507710433287	0.1051558262725154			
[mm] SIM translation stage pos	250.455976	250.4635187648994			
[mm] SIM translation stage offset	0	-0.007540371344731511			
[s] Observation start time (MET)	687406188.184000	687405269.13155			
Observation start date	2019-10-14T02:08:39	2019-10-14T01:54:29			
[s] Observation end time (MET)	687423188.184000	687424043.03268			
Observation end date	2019-10-14T06:51:59	2019-10-14T07:07:23			

## 2.3 Aspect



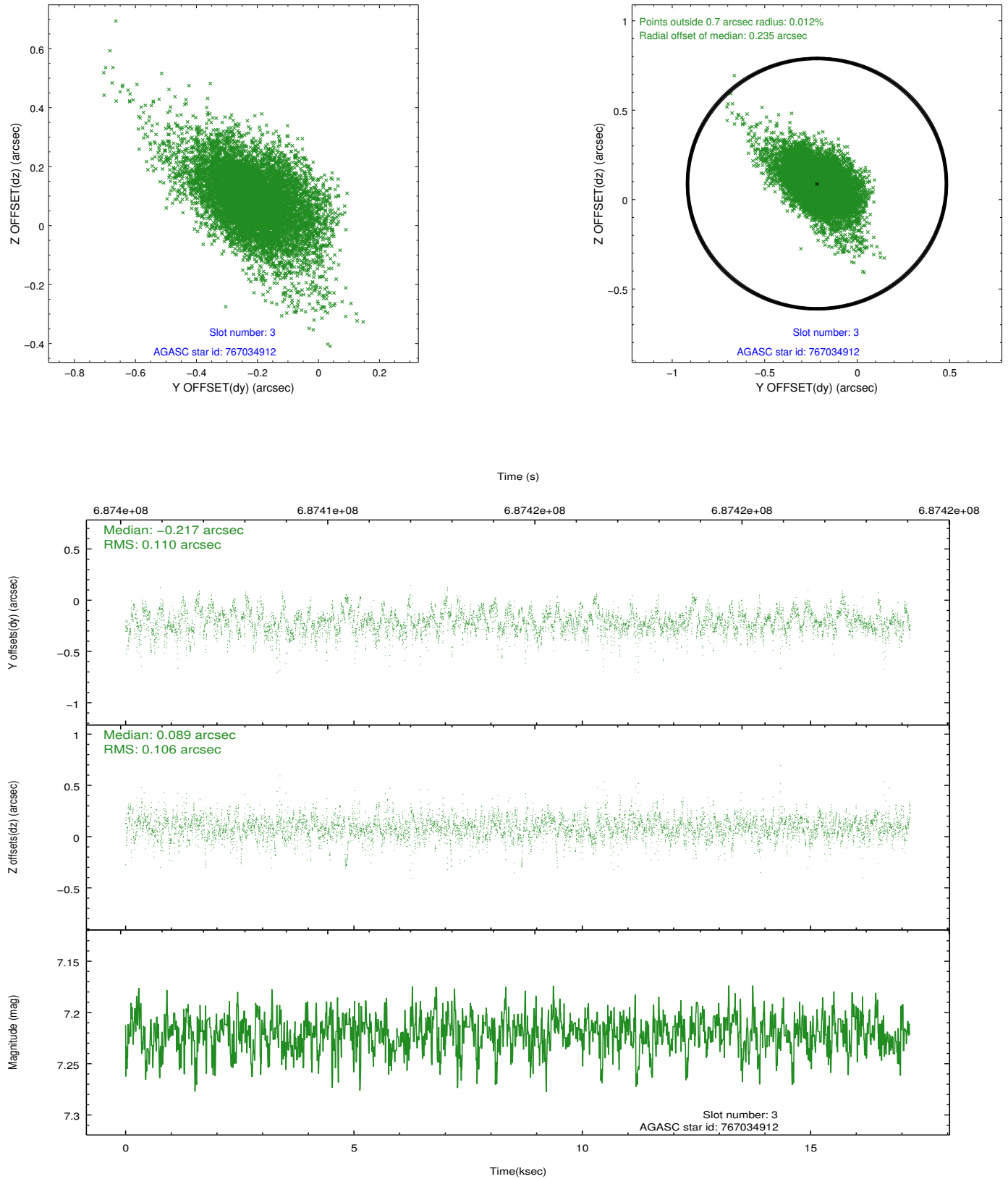


Slot Statistics

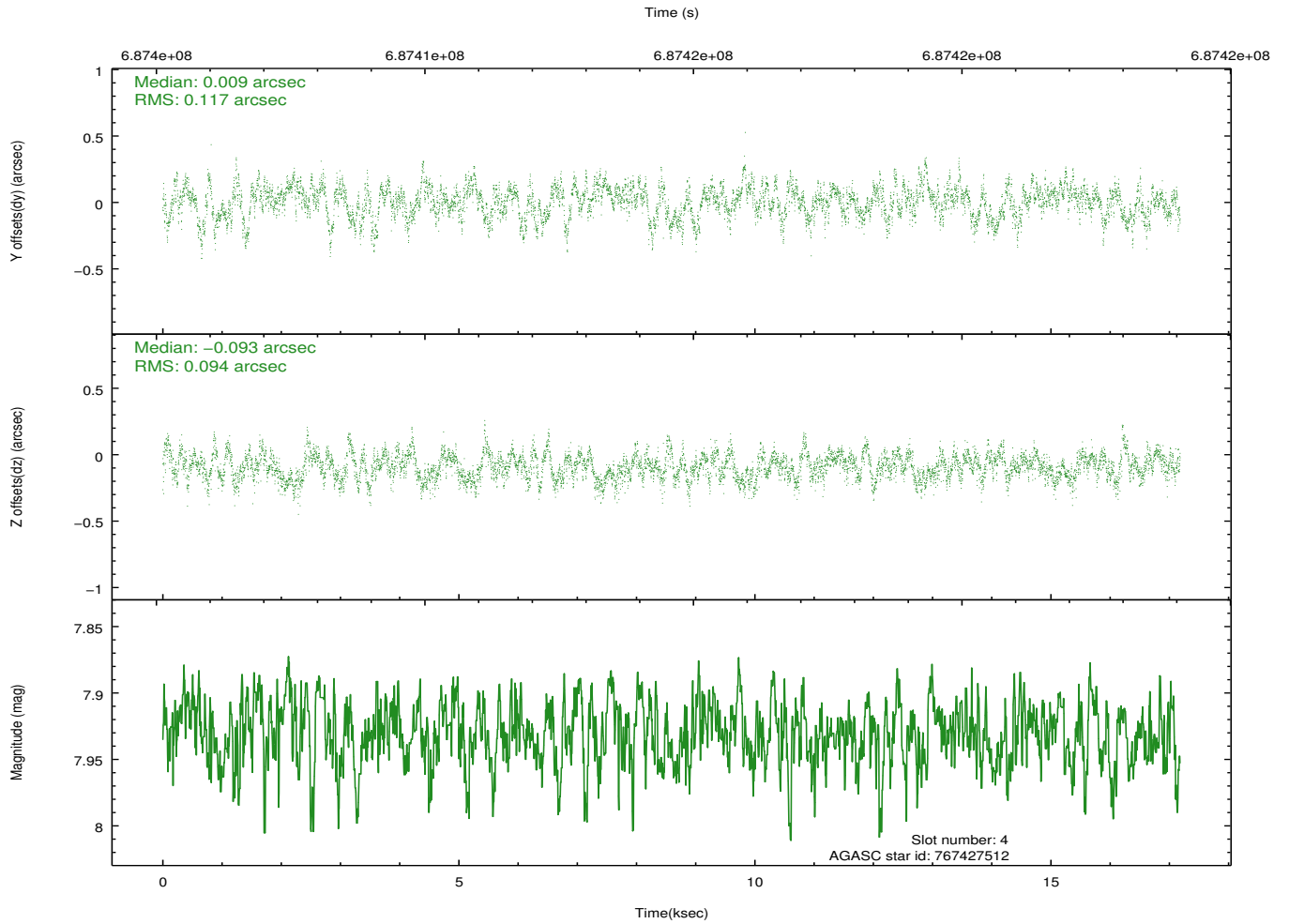
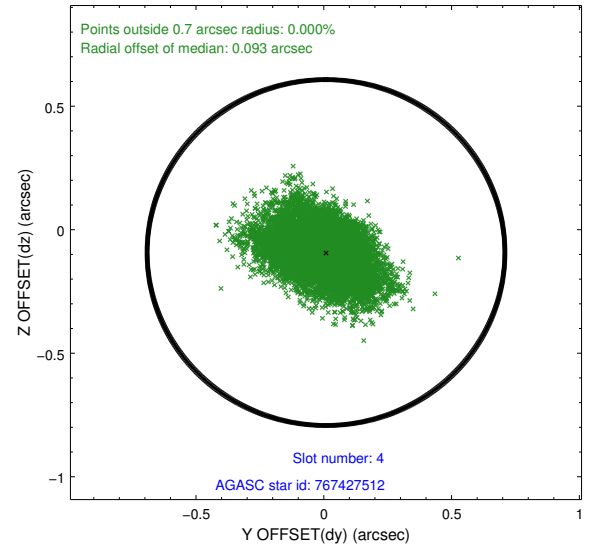
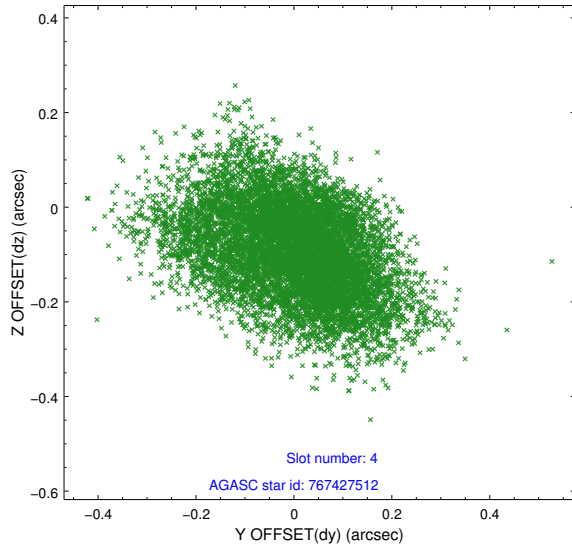
pt	status	used	id	mag	n_pts	frac_pts	med_dy	med_dz	dr1	dr2	ra	dec	mean_y	mea
0	FID		HRC-S-1	7.05	4191	1.000	-0.324	-0.243	0.011	0.028	0.000000	0.000000	-1168.20	-465
1	FID		HRC-S-2	7.03	4190	1.000	0.273	-0.122	0.018	0.028	0.000000	0.000000	1231.80	-458
2	FID		HRC-S-4	7.01	4191	1.000	0.461	0.058	0.021	0.032	0.000000	0.000000	1231.05	566
3	GUIDE	used	767034912	7.22	8380	1.000	-0.217	0.089	0.152	0.276	23.971136	-17.532463	-2324.80	1976
4	GUIDE	used	767427512	7.93	8381	1.000	0.009	-0.093	0.158	0.264	24.837982	-17.793484	438.82	544
5	GUIDE	used	767427672	9.35	8332	1.000	0.090	-0.155	0.212	0.340	24.328664	-17.484410	-1090.17	1942
6	GUIDE	used	767428272	9.50	8342	1.000	-0.170	-0.034	0.345	0.611	24.808893	-17.599727	463.03	1247
7	GUIDE	used	767428280	9.35	8369	1.000	0.315	0.183	0.224	0.358	24.357216	-17.894156	-1246.69	472

## 2.4 Star Slots

### 2.4.1 Slot 3

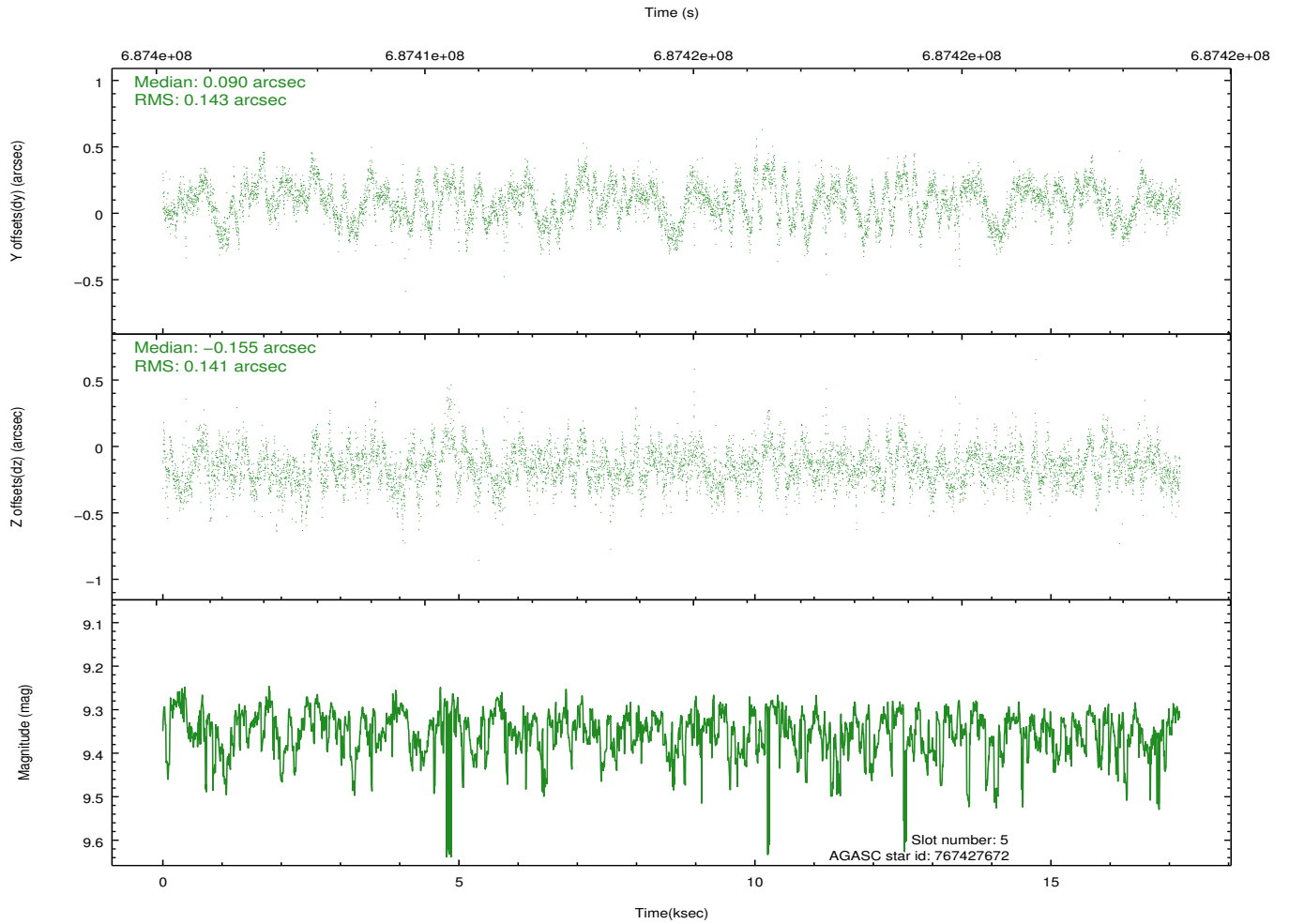
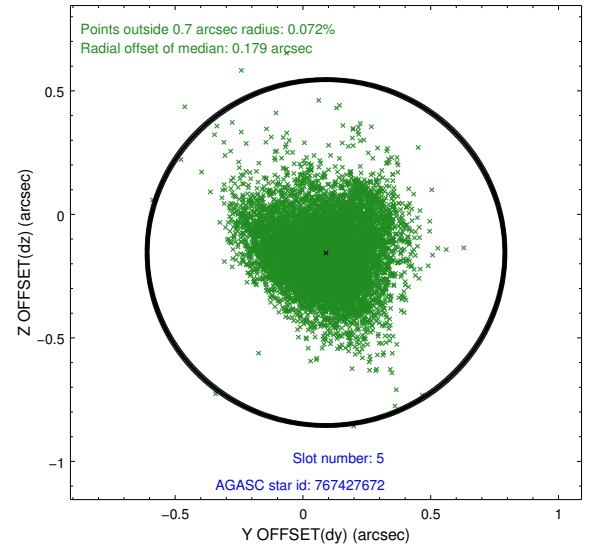
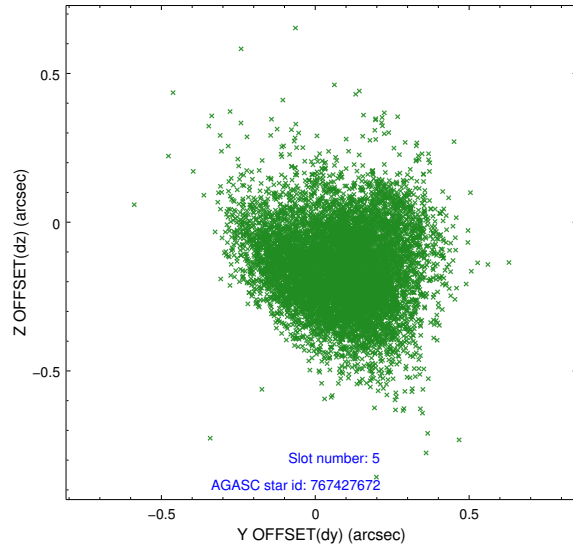


## 2.4.2 Slot 4

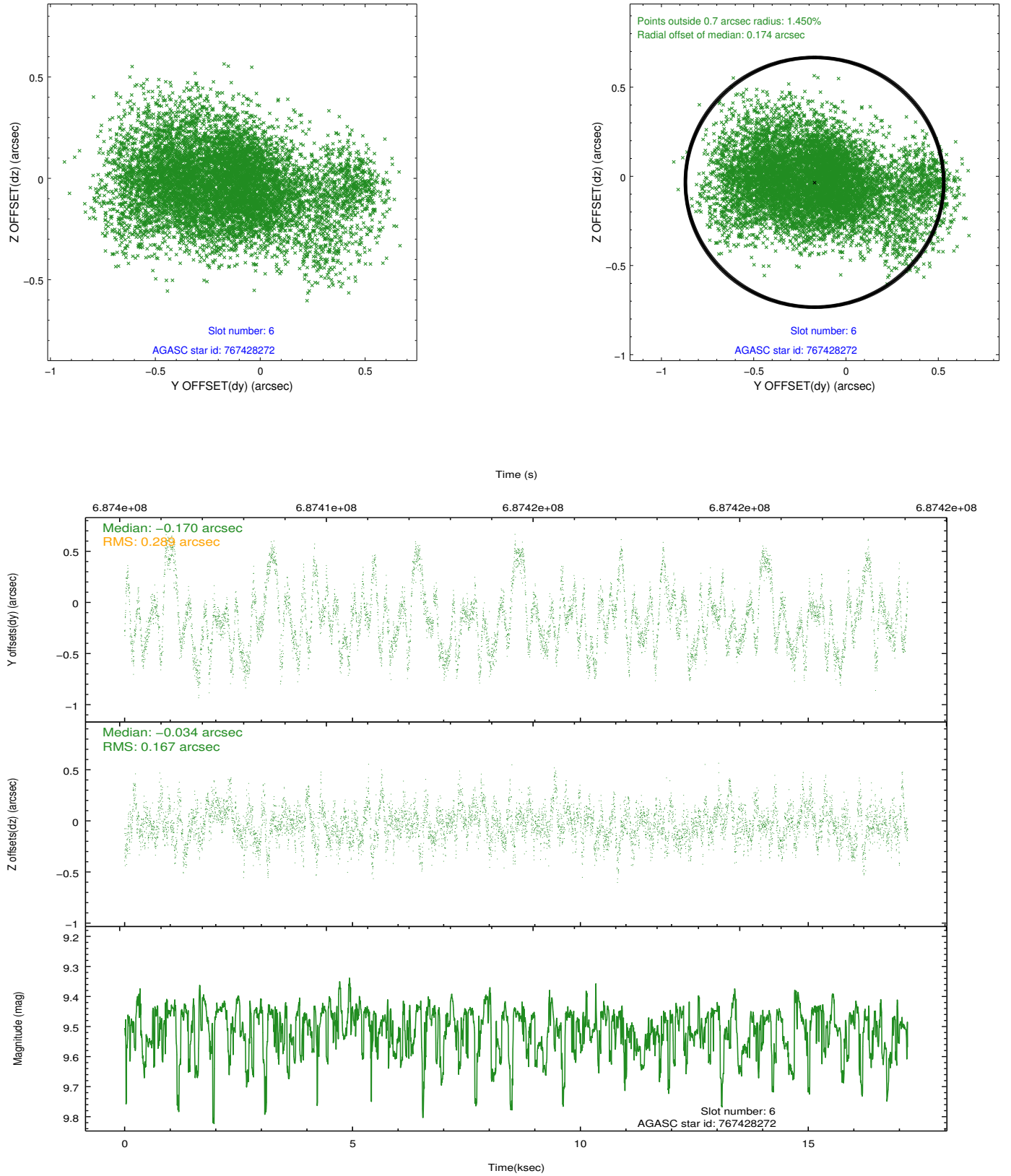




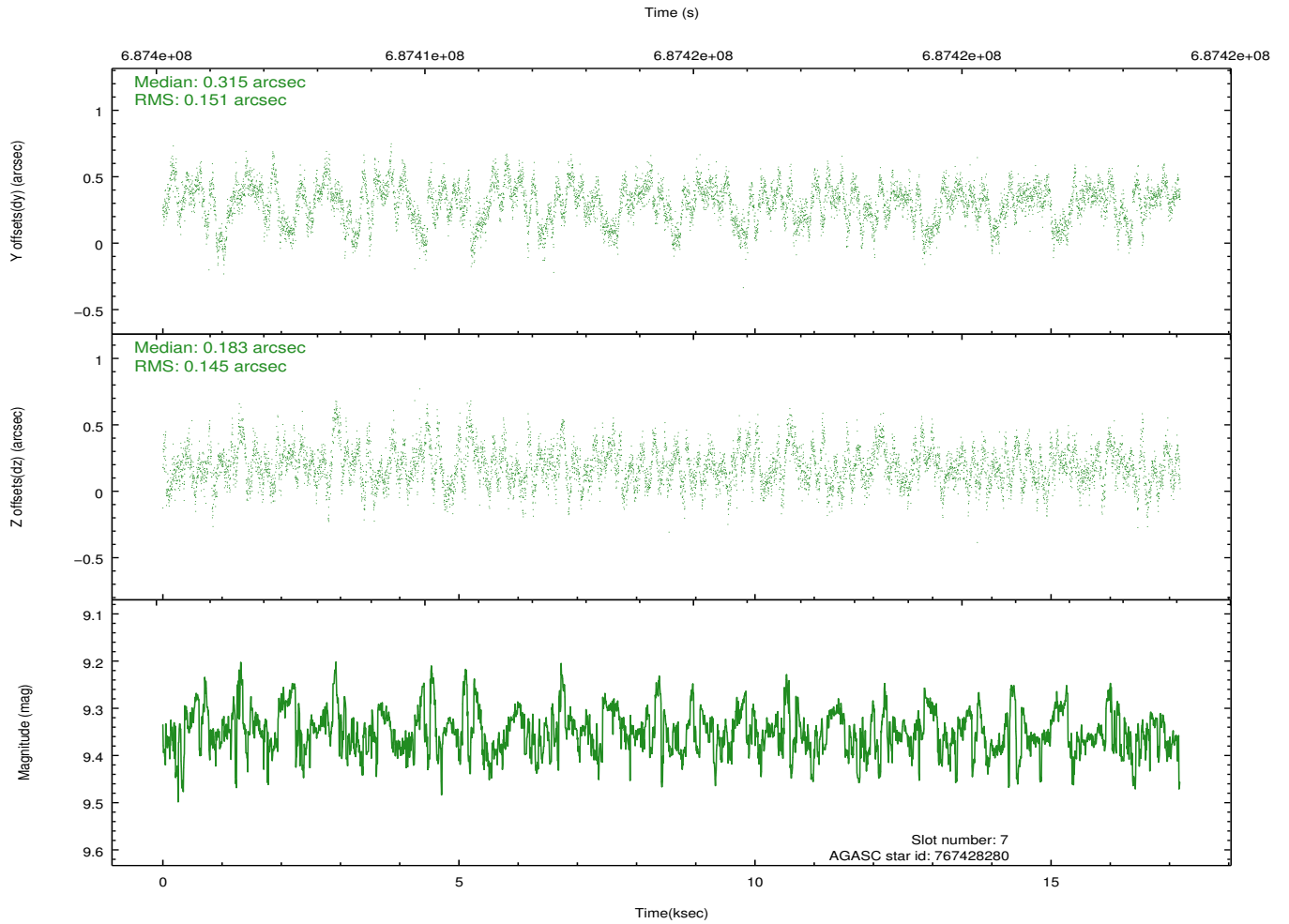
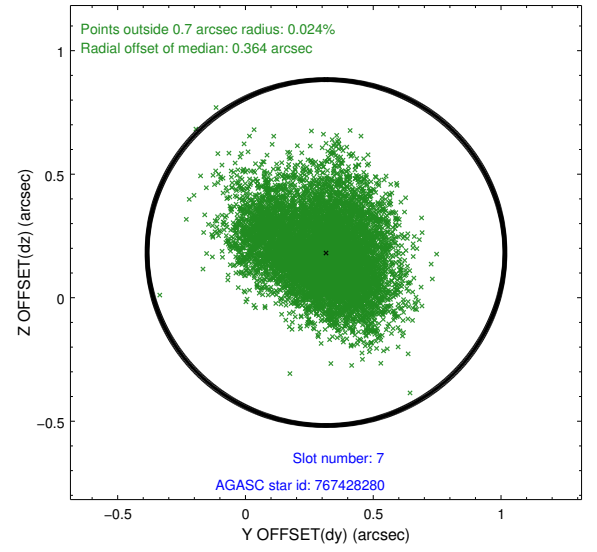
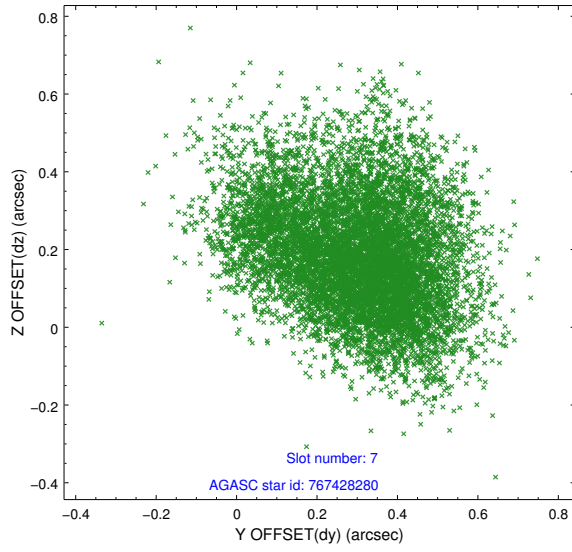
### 2.4.3 Slot 5



## 2.4.4 Slot 6

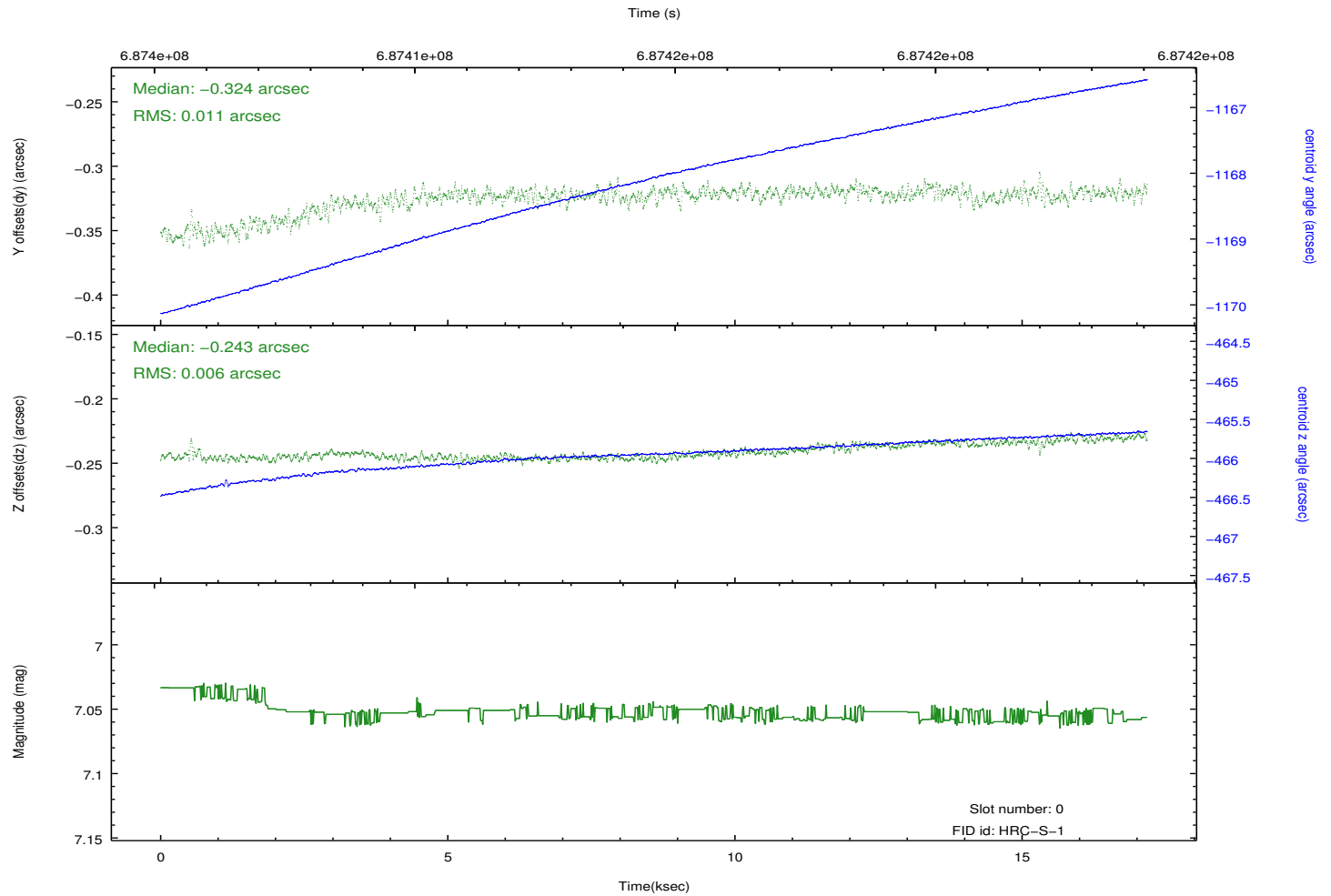
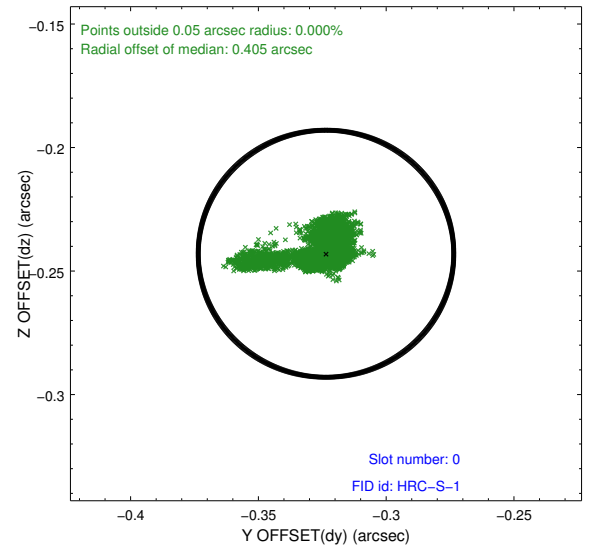
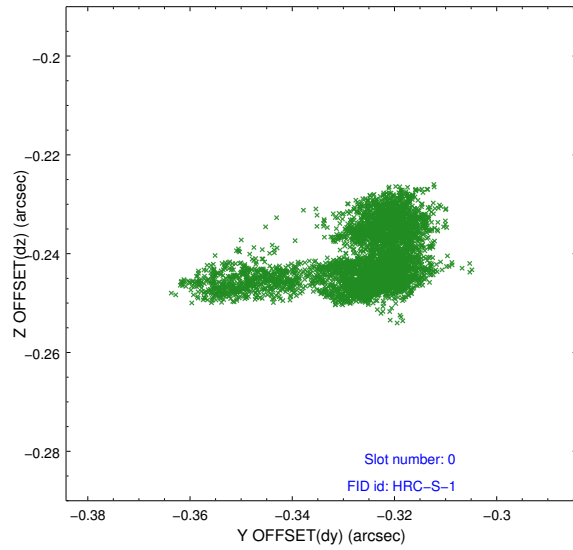


## 2.4.5 Slot 7

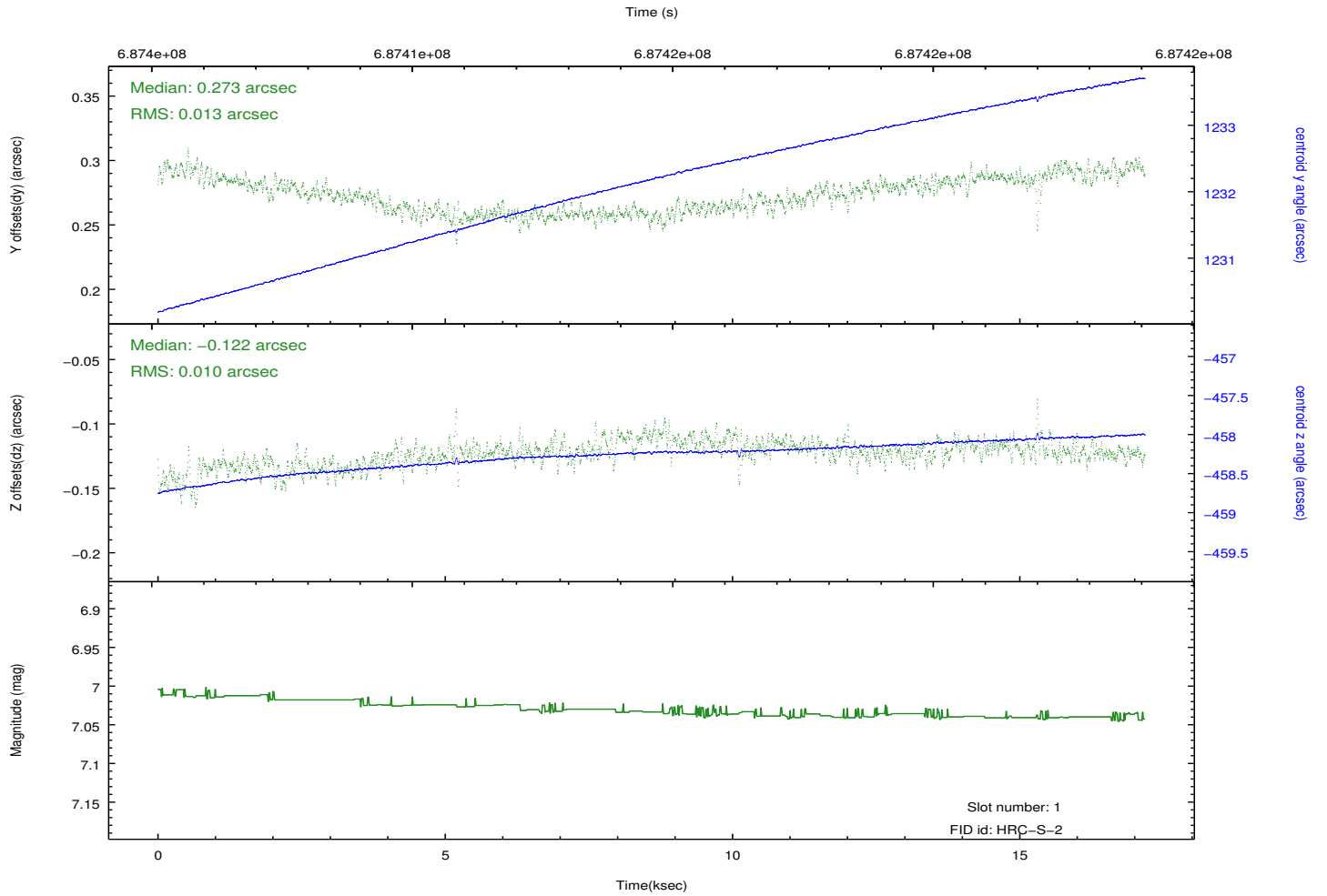
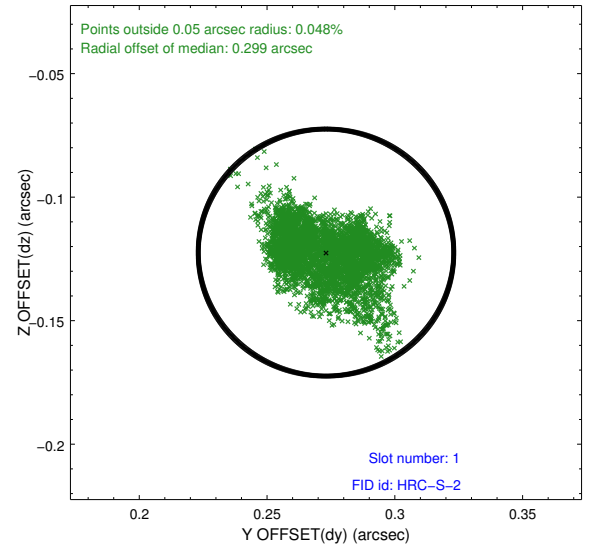
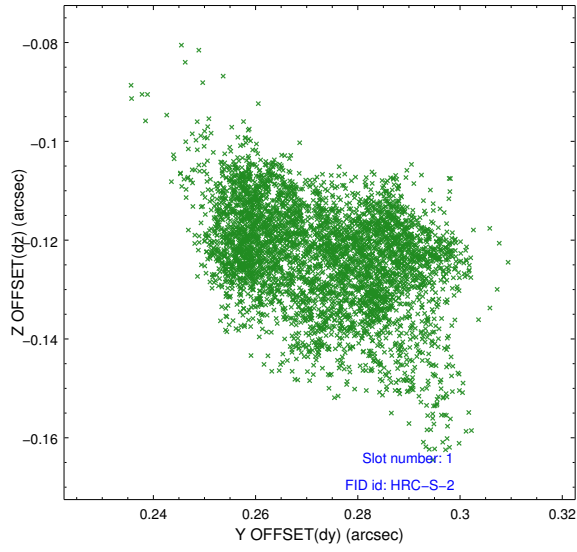


## 2.5 FID Slots

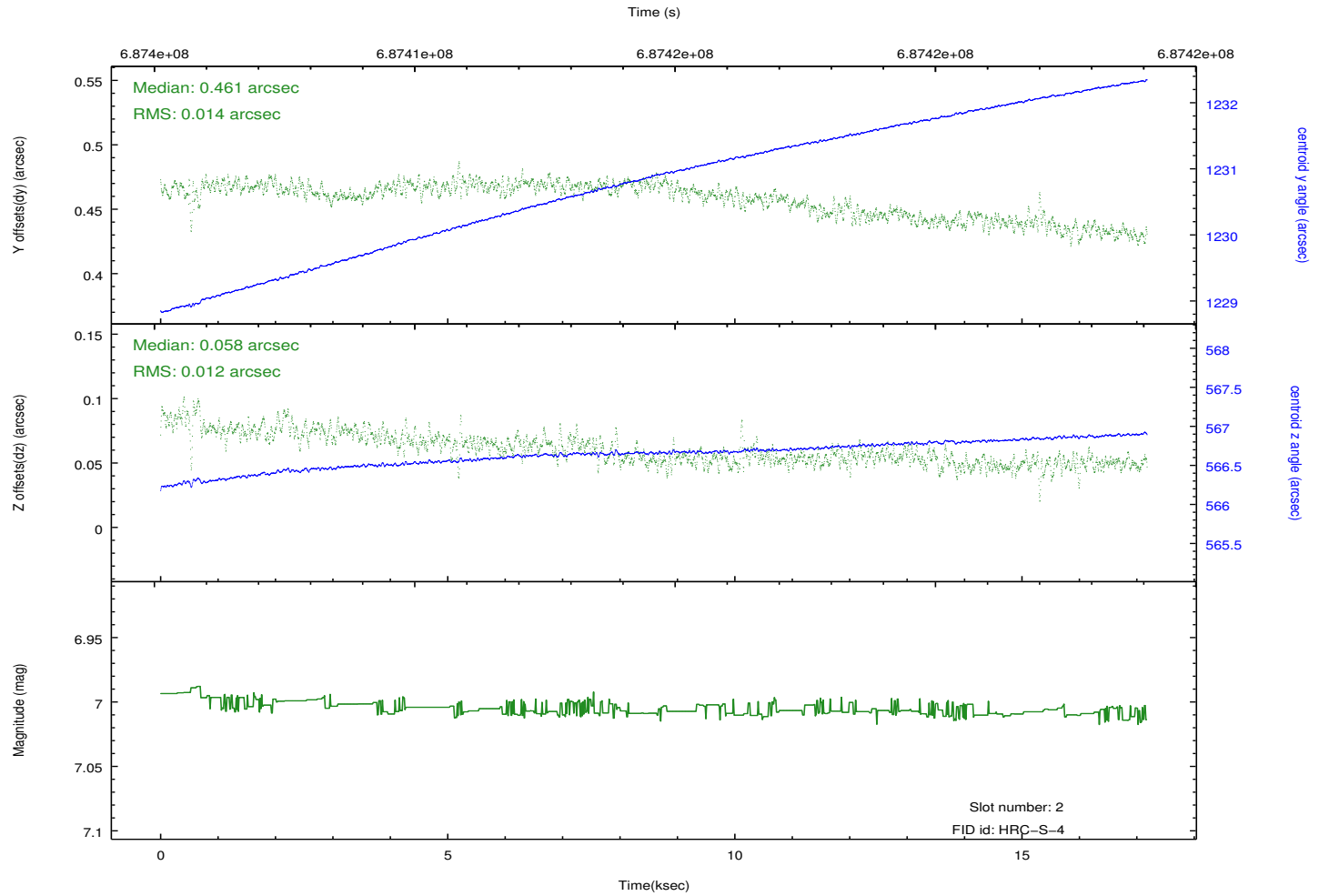
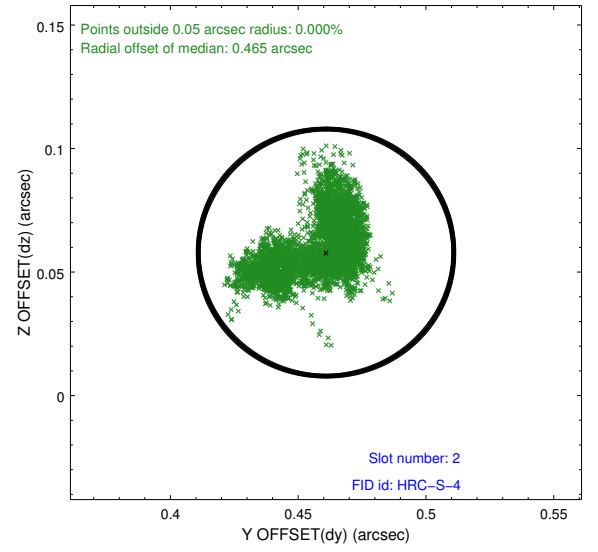
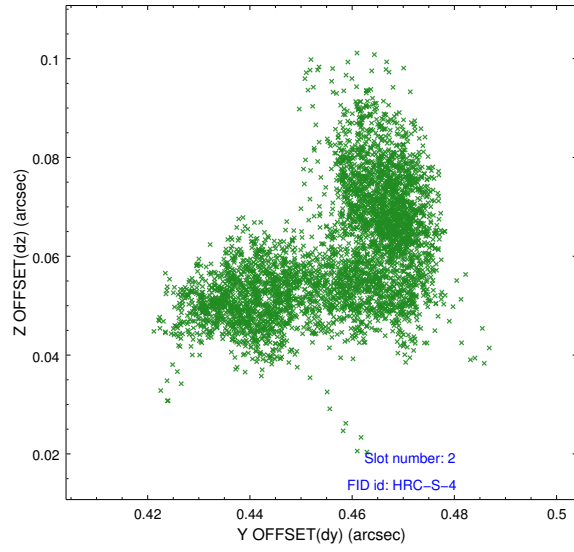
### 2.5.1 Slot 0



## 2.5.2 Slot 1

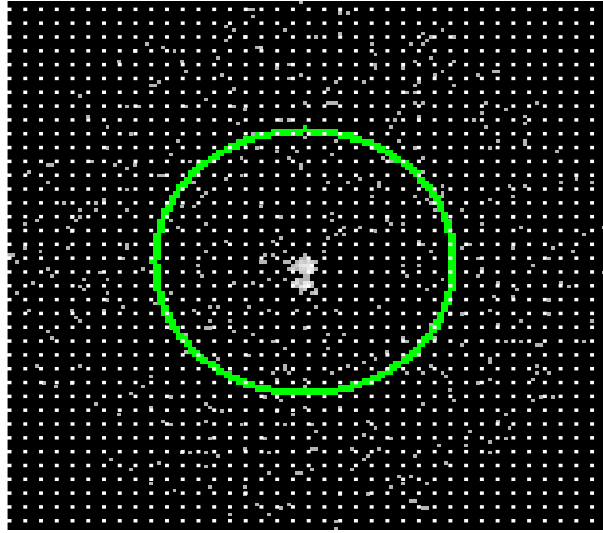


### 2.5.3 Slot 2

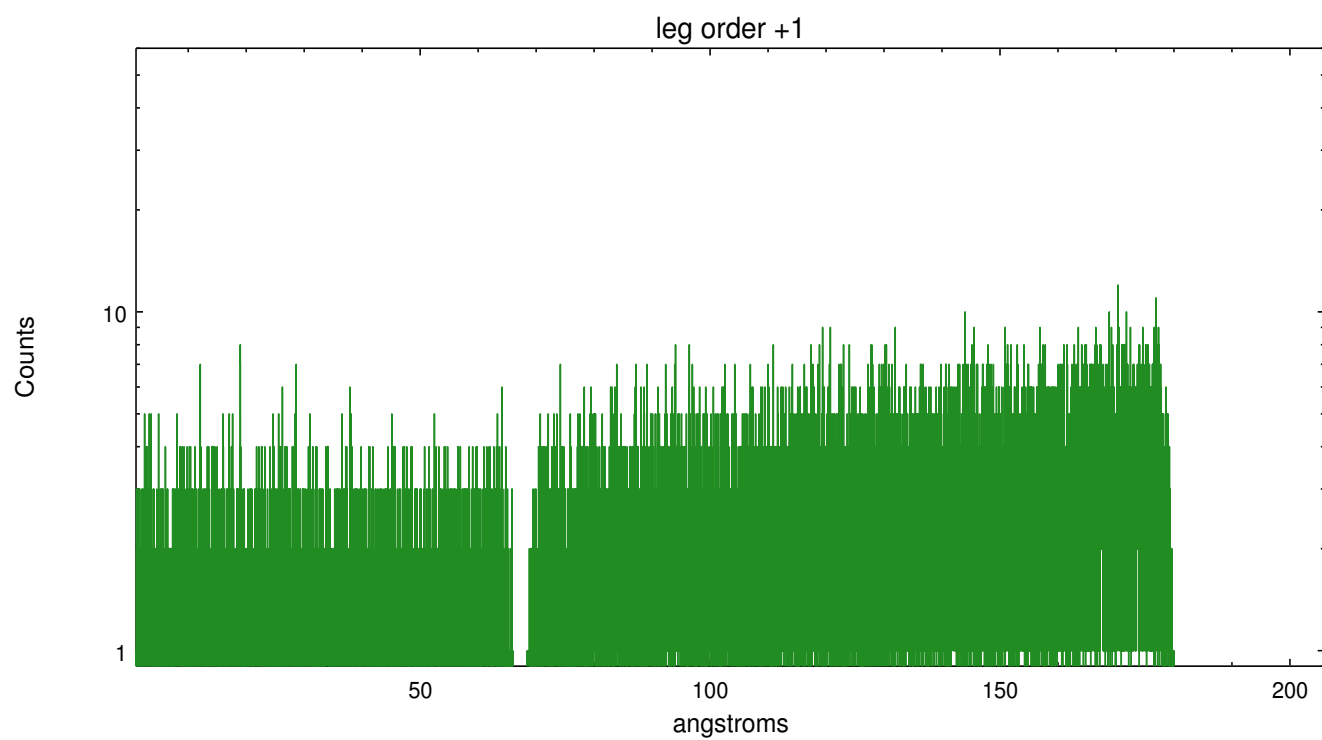
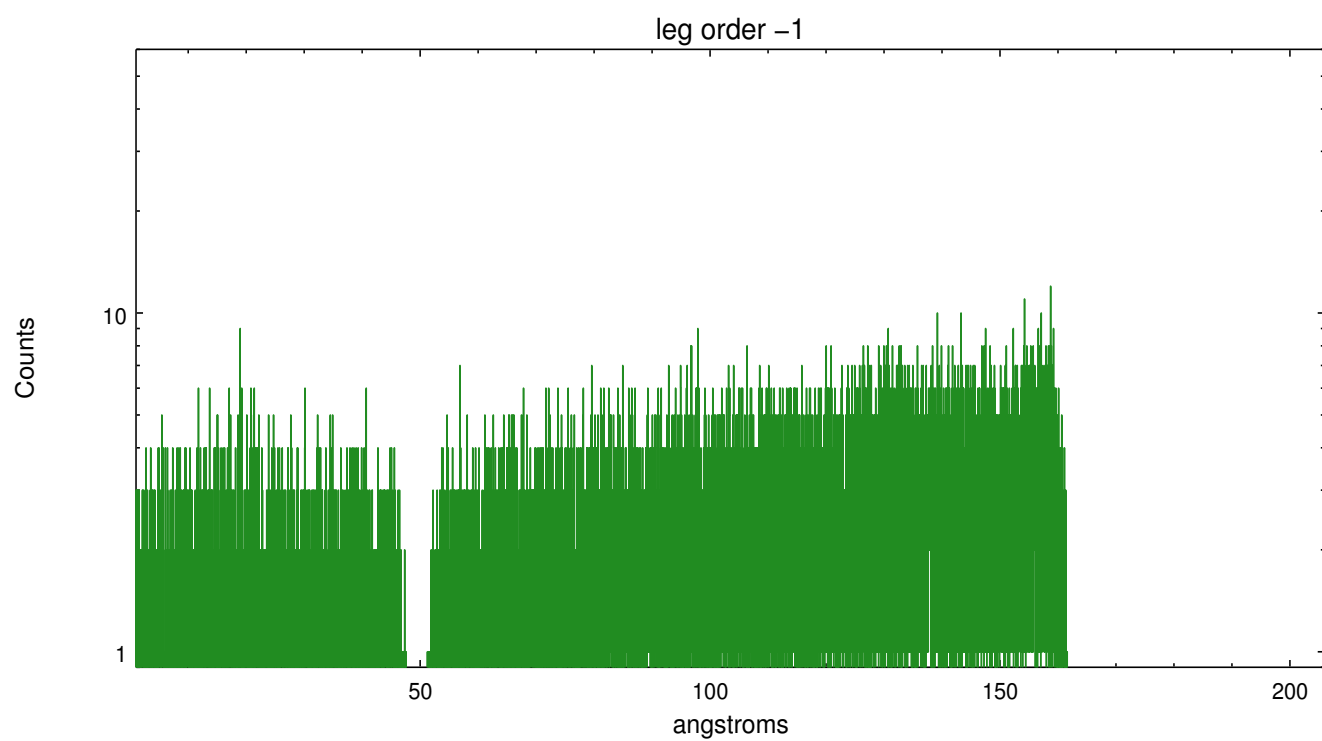


## 3 Gratings

### 3.1 LETG Arm



LETG Zero Order





## A Summary

### A.1 Status

V&V Scientist	Melania Nynka
V&V Date (YYYY-MM-DD)	2019.10.16
V&V Edition	1
V&V Disposition and Status	OK
V&V Charge Time	17.182332275271

### A.2 Comments