

V&V Reference Report

L2 ASCDS Version : 10.6.4

Observation 21066 - L2 Version 1
Chandra X-Ray Center

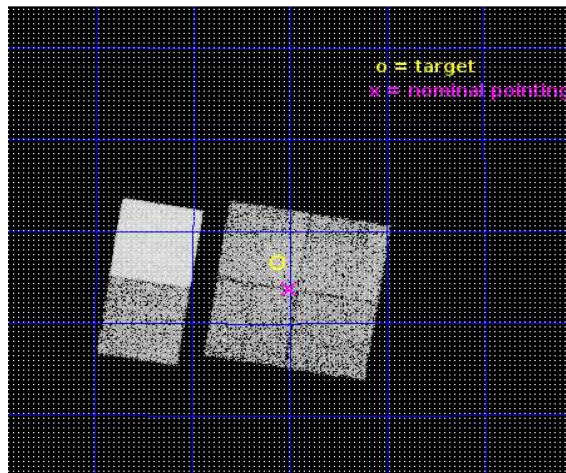
L2 Processing Date : Aug 18 2018

Contents

1	Front	2
2	OBI	3
2.1	OBI	3
2.1.1	Images	3
2.1.2	Bias	3
2.1.3	Parameters	4
2.1.4	Events	4
2.2	Compared Parameters	5
2.3	Aspect	6
2.4	Star Slots	9
2.4.1	Slot 3	9
2.4.2	Slot 4	10
2.4.3	Slot 5	11
2.4.4	Slot 6	12
2.4.5	Slot 7	13
2.5	FID Slots	14
2.5.1	Slot 0	14
2.5.2	Slot 1	15
2.5.3	Slot 2	16
A	Summary	17
A.1	Status	17
A.2	Comments	17

1 Front

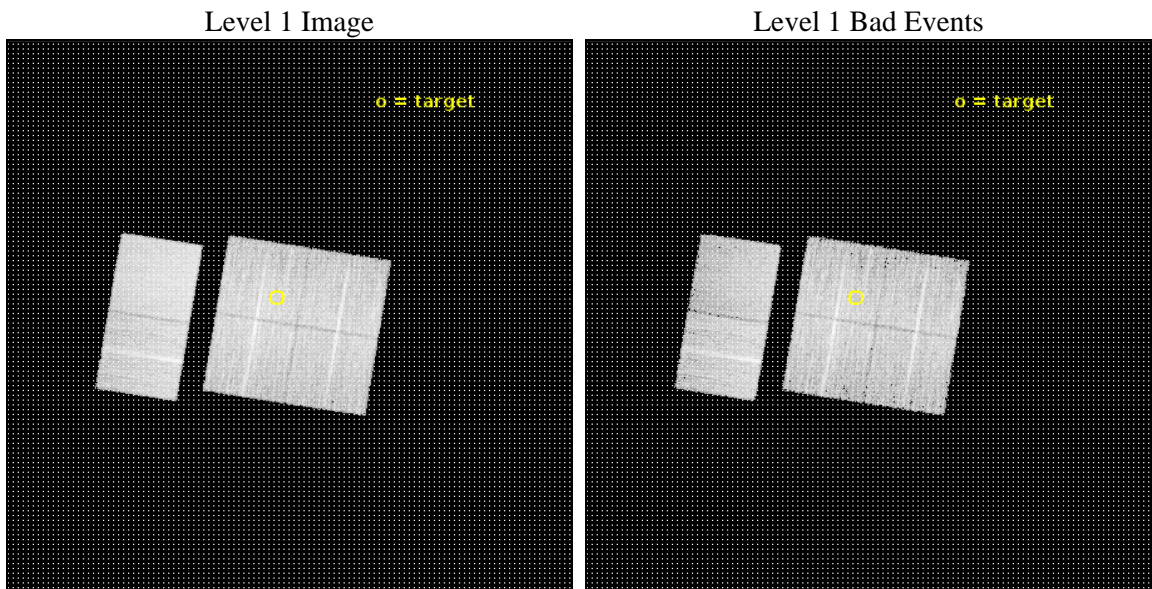
seq_num	801811	Sequence number
obs_id	21066	Observation id
title	Witnessing the culmination of structure formation in the Universe	
observer	Stefano Etori	Principal investigator
object	PSZ2 G080.16+57.65	Source name
dtcycle	0	
cycle	P	events from which exps? Prim/Second/Both
ra_targ	225.283333	Observer's specified target RA [deg]
dec_targ	47.276389	Observer's specified target Dec [deg]
ra_nom	225.25130790915	Nominal RA [deg]
dec_nom	47.230130805978	Nominal Dec [deg]
roll_nom	279.23216569257	Nominal Roll [deg]
revision	1	Processing version of data
ontime	10456.54384017	Sum of GTIs [s]
livetime	10324.136785891	Livetime [s]
ontime0	10456.42072022	Sum of GTIs [s]
ontime1	10456.461760163	Sum of GTIs [s]
ontime2	10456.502800226	Sum of GTIs [s]
ontime3	10456.54384017	Sum of GTIs [s]
ontime6	10453.384949803	Sum of GTIs [s]
ontime7	10456.584880233	Sum of GTIs [s]
l2events	84513	Number of level 2 events



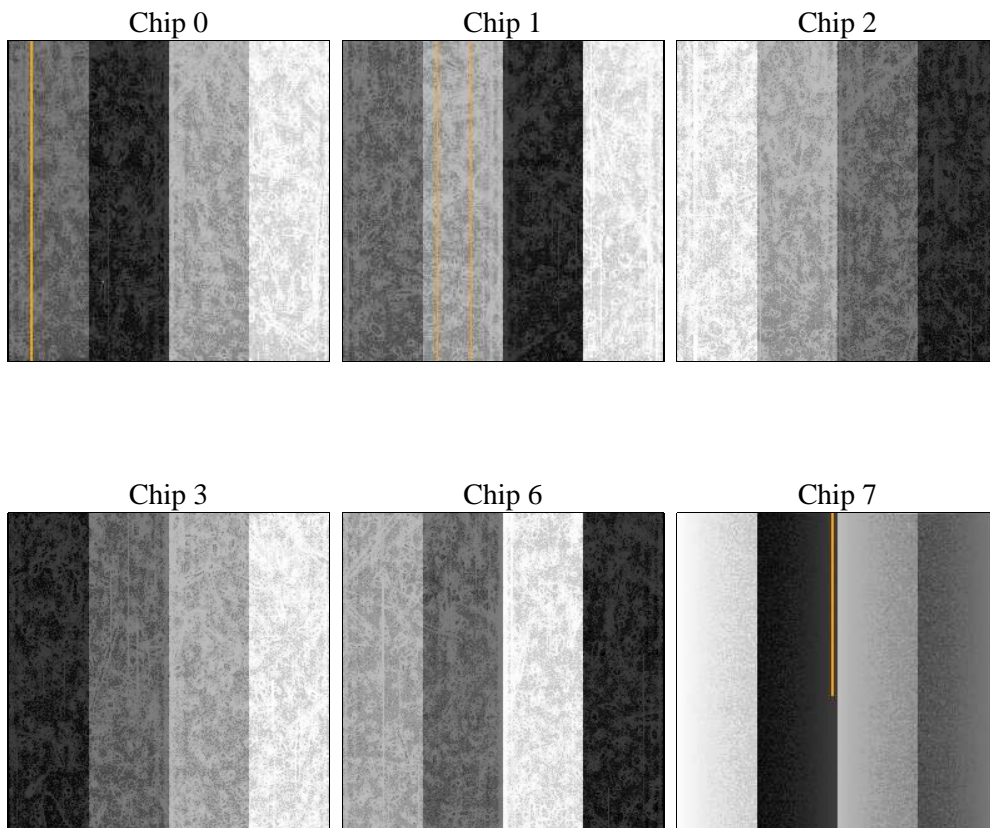
2 OBI

2.1 OBI

2.1.1 Images



2.1.2 Bias



2.1.3 Parameters

obi_num	0	Obi number	sched_exp_time	10500.000000	[s] Scheduled observation exposure time
ascdsver	10.6.4	Processing system revision	ontime	10456.54384017	Sum of GTIs [s]
caldsver	4.7.8	 	ontime0	10456.42072022	Sum of GTIs [s]
date	2018-08-18T20:21:54	Date and time of file creation	ontime1	10456.461760163	Sum of GTIs [s]
revision	1	Processing version of data	ontime2	10456.502800226	Sum of GTIs [s]
			ontime3	10456.54384017	Sum of GTIs [s]
			ontime6	10453.384949803	Sum of GTIs [s]
			ontime7	10456.584880233	Sum of GTIs [s]
			l1events	476722	Number of level 1 events

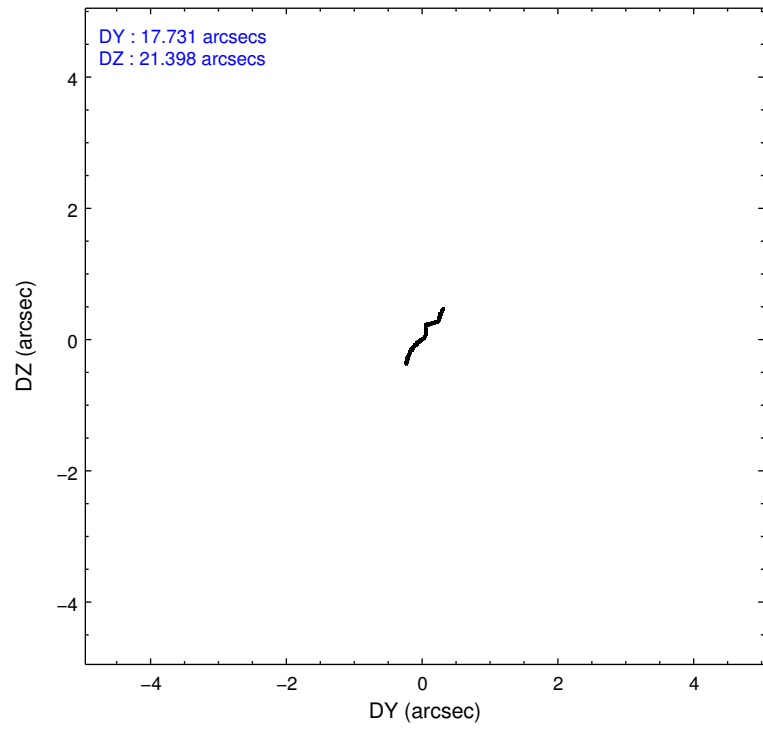
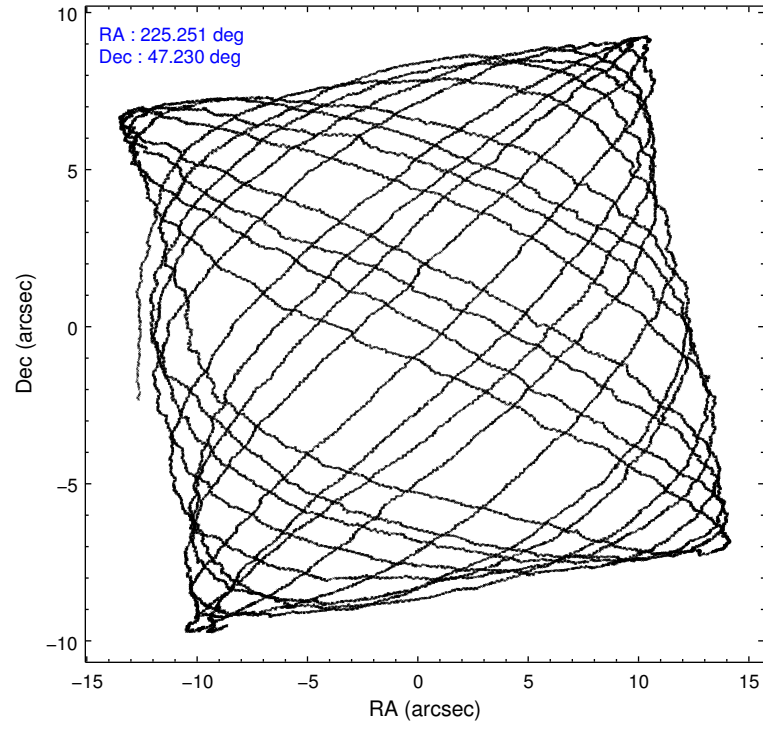
2.1.4 Events

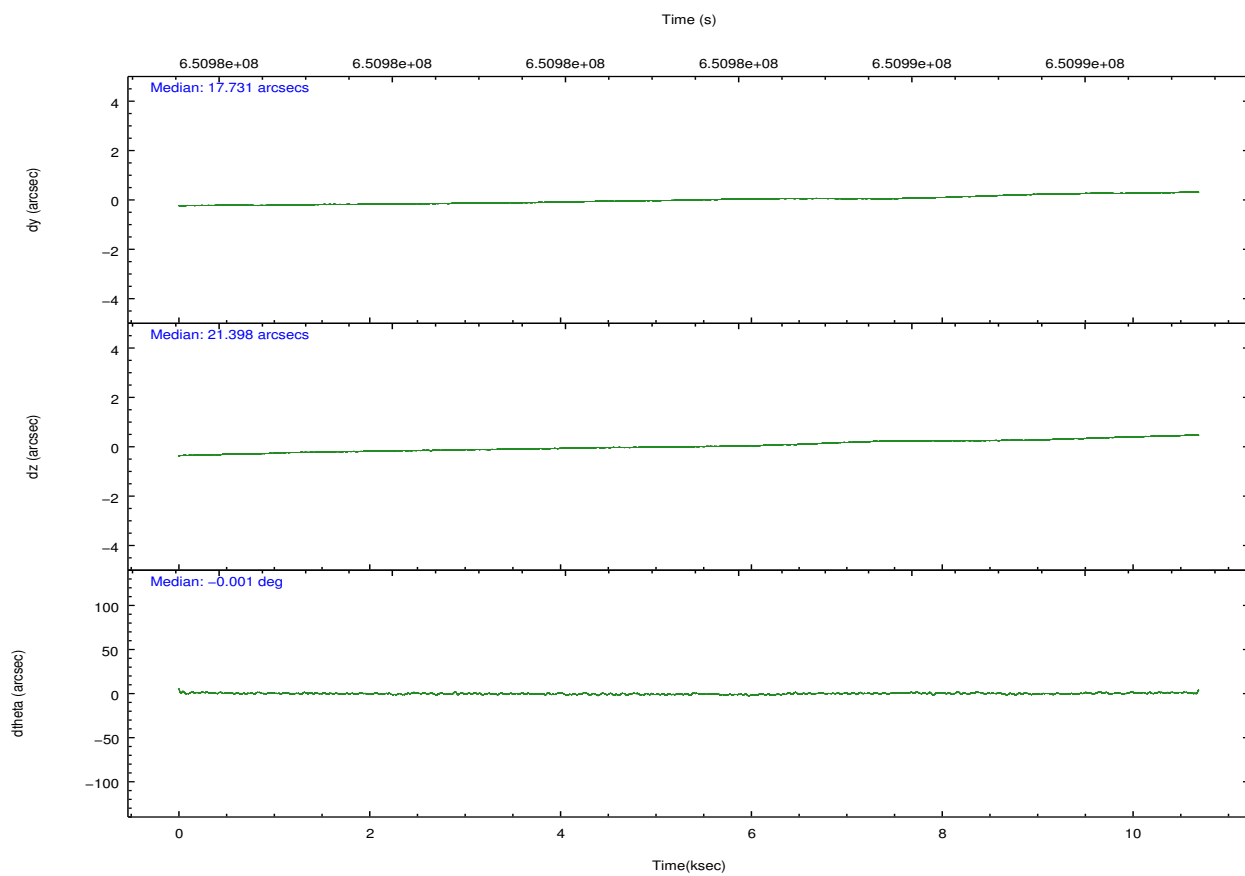
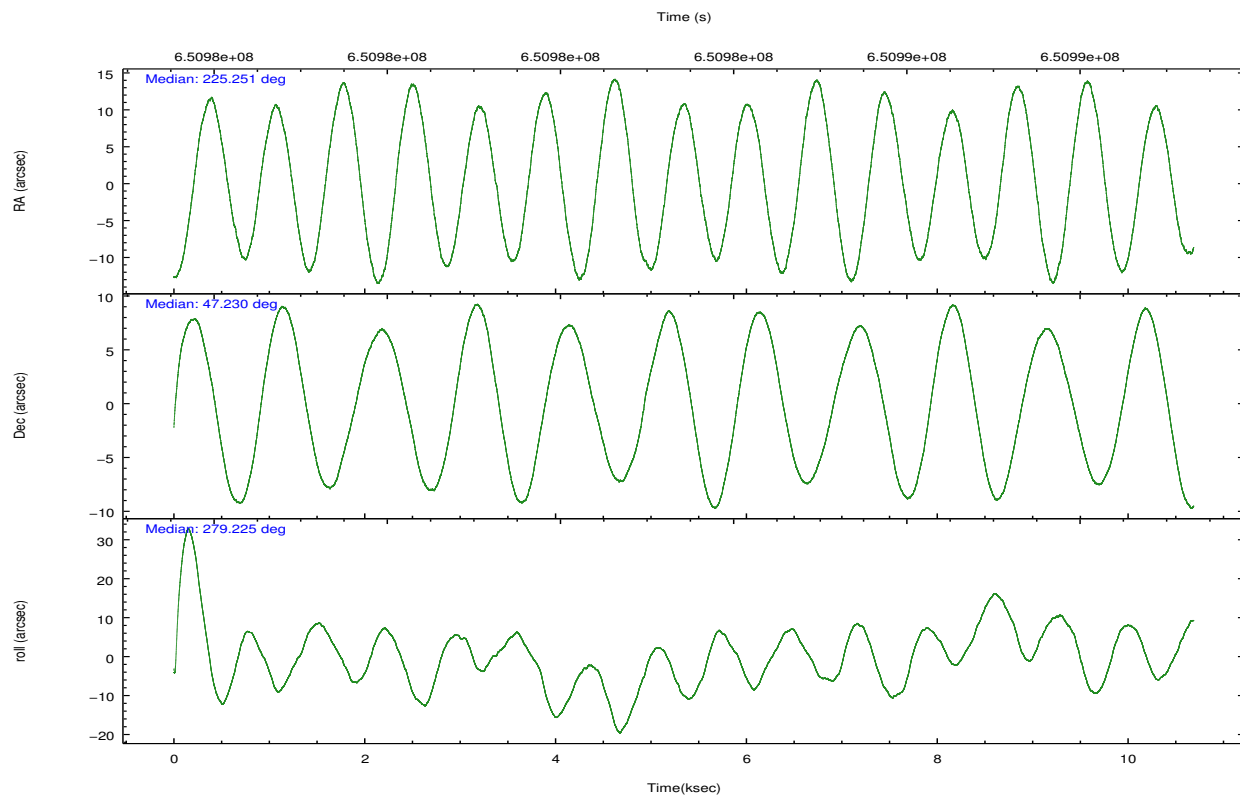
	ccd 0	ccd 1	ccd 2	ccd 3	ccd 6	ccd 7		ccd 0	ccd 1	ccd 2	ccd 3	ccd 6	ccd 7
level 1 events	67863	74934	75471	77540	80466	100448	grade 0 events	3058	4275	3446	4896	3025	3888
rejected events	59073	63978	66344	67138	71458	55956		4%	5%	4%	6%	3%	3%
rejected %	87%	85%	87%	86%	88%	55%	grade 1 events	46	53	51	52	41	139
								0%	0%	0%	0%	0%	0%
							grade 2 events	2170	2692	2198	1856	2088	9711
								3%	3%	2%	2%	2%	9%
							grade 3 events	927	903	871	924	912	3424
								1%	1%	1%	1%	1%	3%
							grade 4 events	880	950	942	950	839	3593
								1%	1%	1%	1%	1%	3%
							grade 5 events	3337	3501	3150	3761	3736	9997
								4%	4%	4%	4%	4%	9%
							grade 6 events	1764	2142	1673	1780	2151	23904
								2%	2%	2%	2%	2%	23%
							grade 7 events	55681	60418	63140	63321	67674	45792
								82%	80%	83%	81%	84%	45%

2.2 Compared Parameters

Parameter	Planned	Actual	Parameter	Planned	Actual
Instrument	ACIS	ACIS	Obspar format version number	7	7
Detector	ACIS-012367	ACIS-012367	Obspar file type	PREDICTED	ACTUAL
Grating	NONE	NONE	Obspar update status	NONE	UPDATED
Data mode	VFAINT	VFAINT	CCD I0 on	Y	Y
Observation mode	POINTING	POINTING	CCD I1 on	Y	Y
[deg] Pointing RA	225.225500	225.2513079091474	CCD I2 on	Y	Y
[deg] Pointing Dec	47.251420	47.23013080597844	CCD I3 on	Y	Y
[deg] Pointing Roll	279.042477	279.2321656925692	CCD S0 on	N	N
[mm] SIM focus pos	-0.782348	-0.7809083437167272	CCD S1 on	N	N
[mm] SIM defocus	0	0.001439871863259334	CCD S2 on	O1	Y
[mm] SIM translation stage pos	-233.592463	-233.5874344608287	CCD S3 on	O2	Y
[mm] SIM translation stage offset	0	-0.005018542100998502	CCD S4 on	N	N
[s] Observation start time (MET)	650978273.184000	650977401.86051	CCD S5 on	N	N
Observation start date	2018-08-18T11:16:44	2018-08-18T11:03:21	Number of optional ACIS chips dropped	0	0
[s] Observation end time (MET)	650988773.184000	650989759.7737401	On-chip summing requested	N	N
Observation end date	2018-08-18T14:11:44	2018-08-18T14:29:19	Subarray requested	NONE	NONE
Read mode	TIMED	TIMED	Alternating exposures requested	N	N
			[s] Primary exposure time	0.000000	3.2

2.3 Aspect



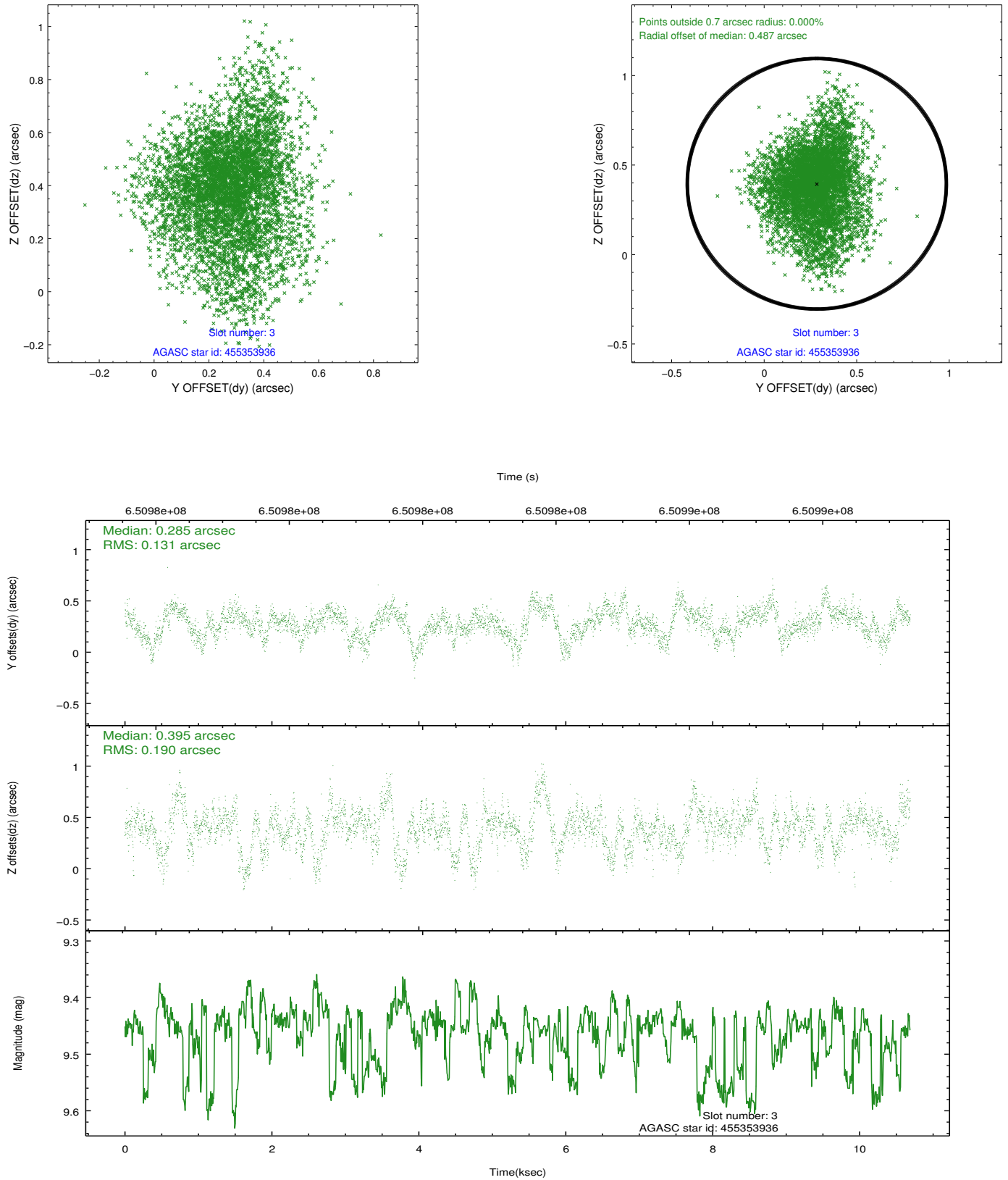


Slot Statistics

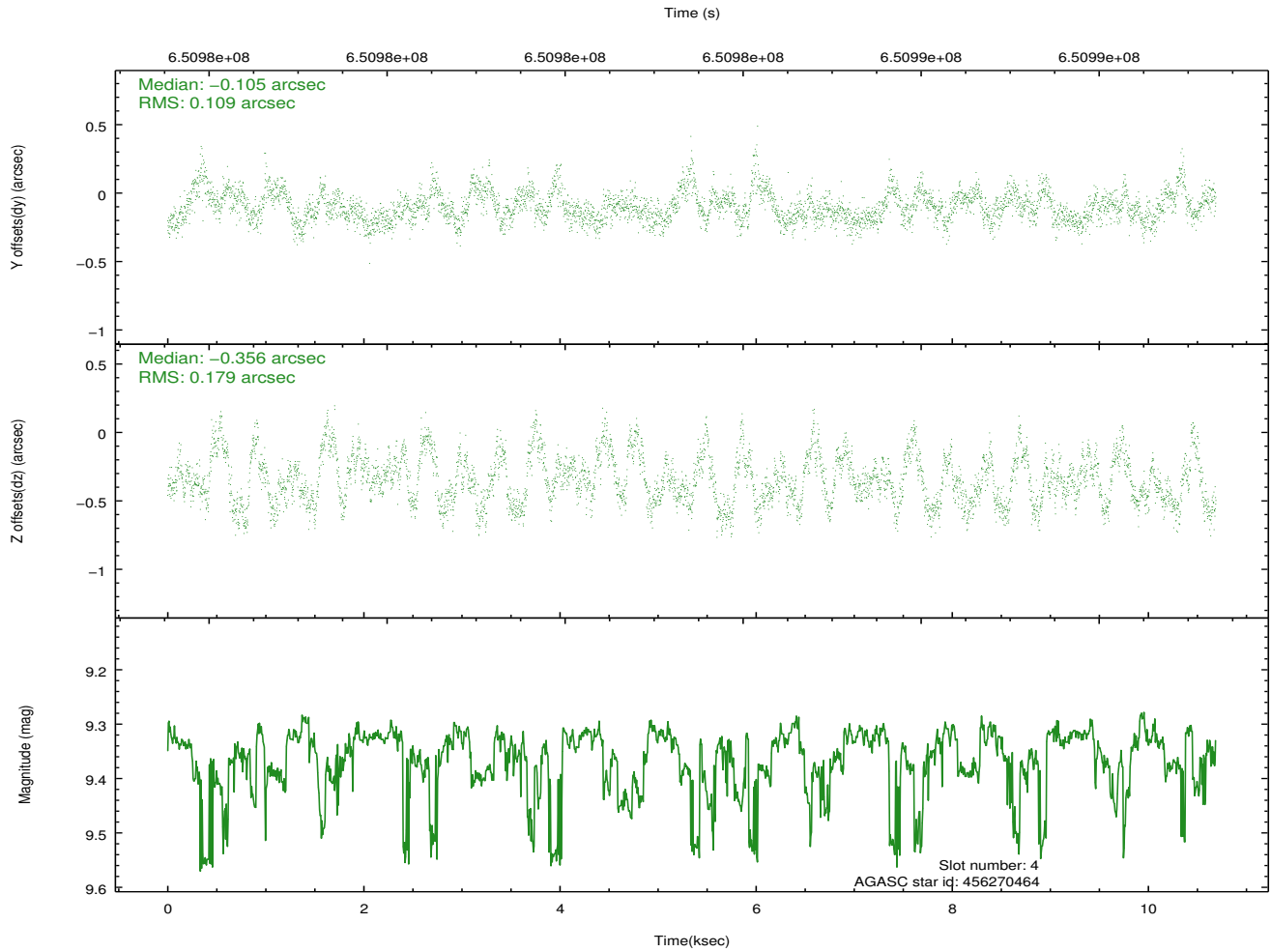
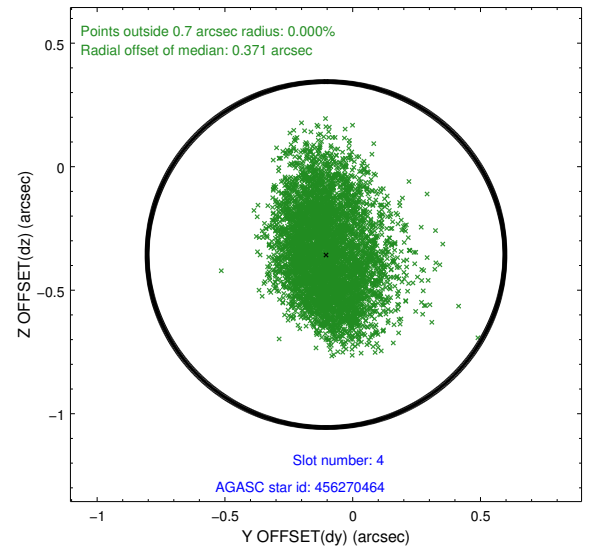
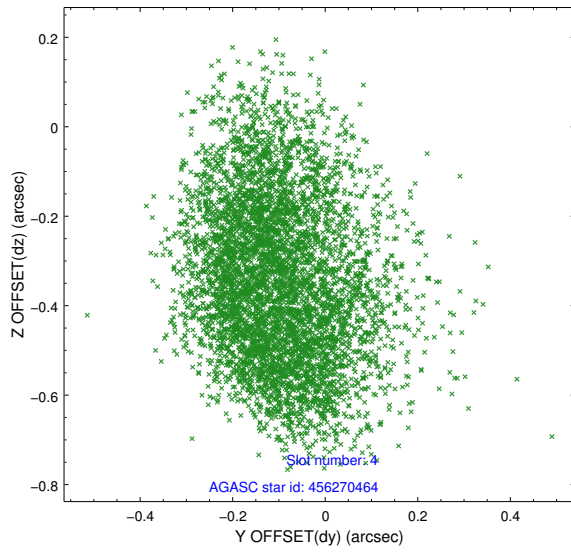
pt	status	used	id	mag	n_pts	frac_pts	med_dy	med_dz	dr1	dr2	ra	dec	mean_y	mea
0	FID		ACIS-I-1	7.08	2607	1.000	0.072	0.004	0.009	0.015	0.000000	0.000000	921.70	-845
1	FID		ACIS-I-2	6.99	2607	1.000	-0.169	-0.068	0.012	0.019	0.000000	0.000000	-772.36	-851
2	FID		ACIS-I-6	7.08	2607	1.000	0.006	0.132	0.017	0.026	0.000000	0.000000	387.10	1696
3	GUIDE	used	455353936	9.46	5207	1.000	0.285	0.395	0.242	0.415	224.217024	47.395352	-912.40	-2343
4	GUIDE	used	456270464	9.36	5198	1.000	-0.105	-0.356	0.221	0.361	225.825931	46.781340	1898.20	1195
5	GUIDE	used	456663544	8.42	5213	1.000	-0.068	-0.166	0.105	0.173	225.753297	47.731314	-1509.04	1533
6	GUIDE	used	456665928	8.44	5210	1.000	-0.144	0.041	0.144	0.219	225.621888	47.743379	-1600.82	1226
7	GUIDE	used	456665064	9.08	5204	1.000	0.026	0.087	0.126	0.209	225.474071	47.940204	-2355.67	982

2.4 Star Slots

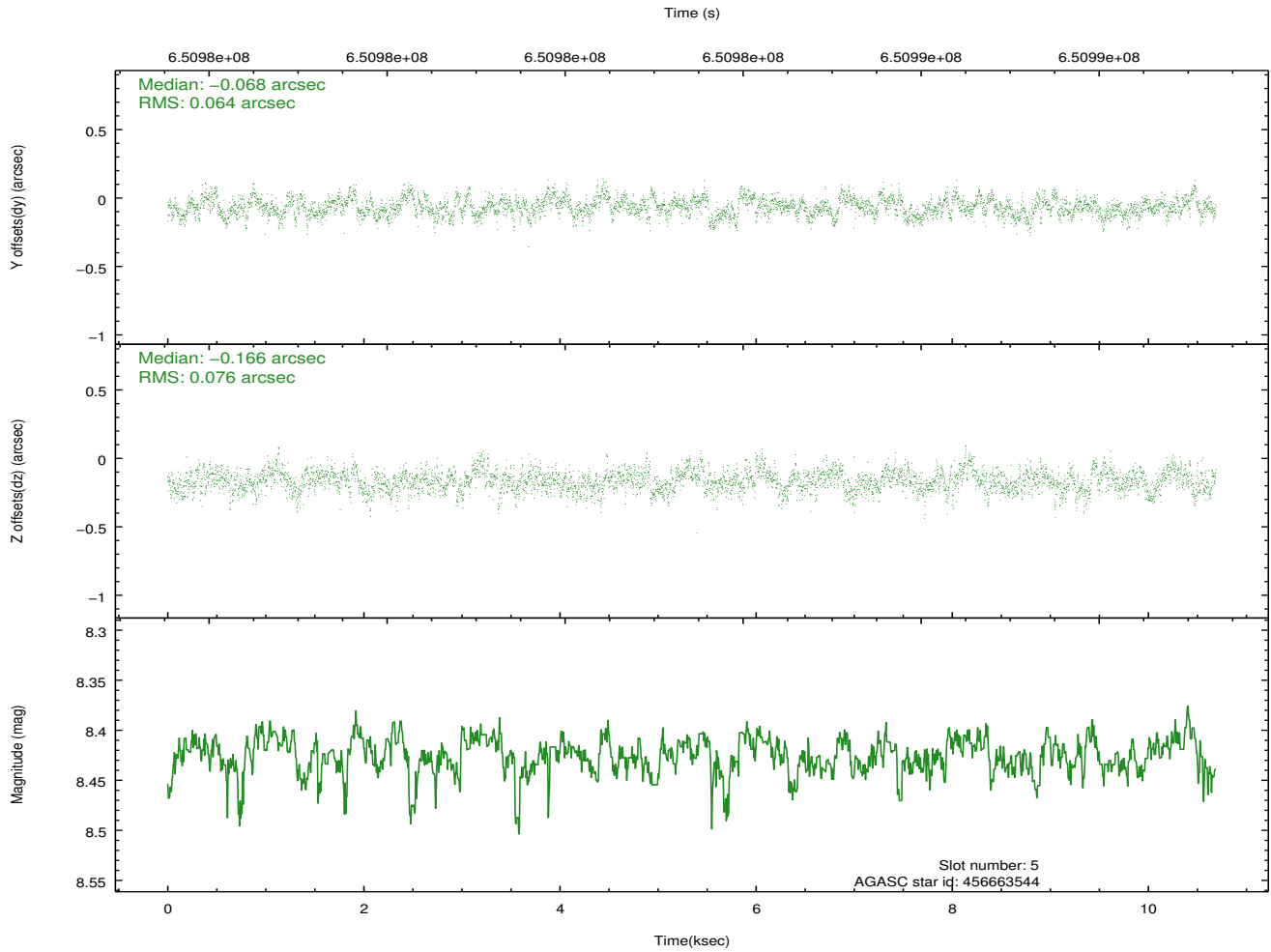
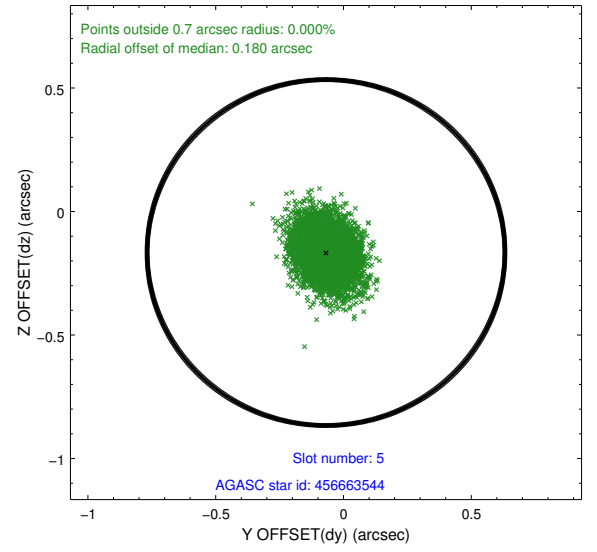
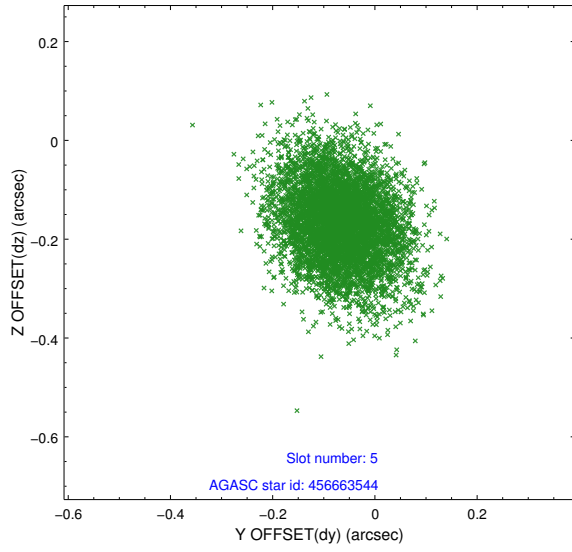
2.4.1 Slot 3



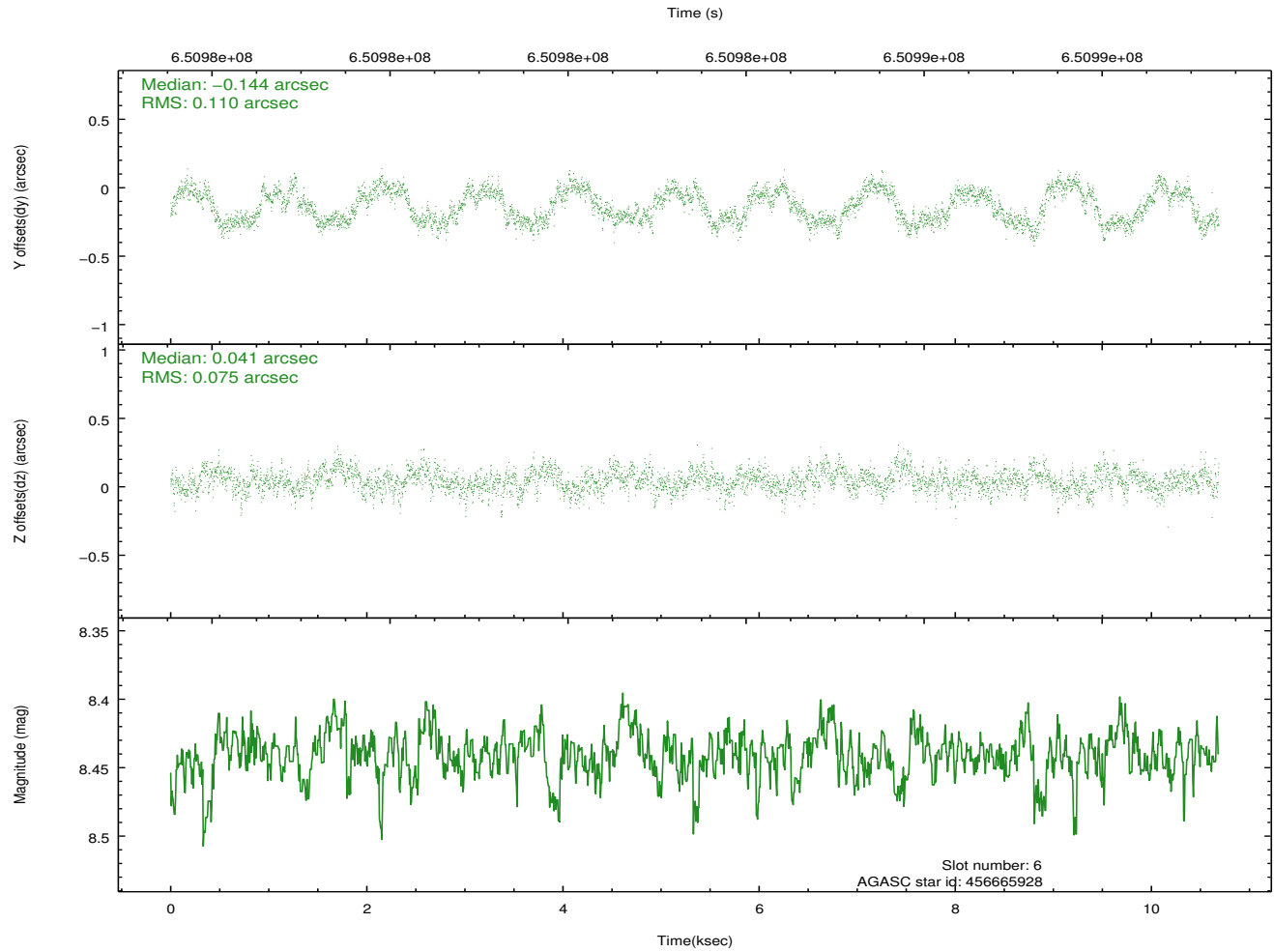
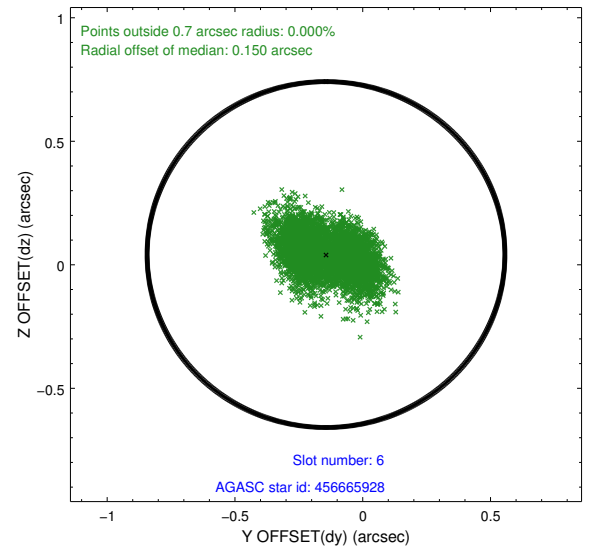
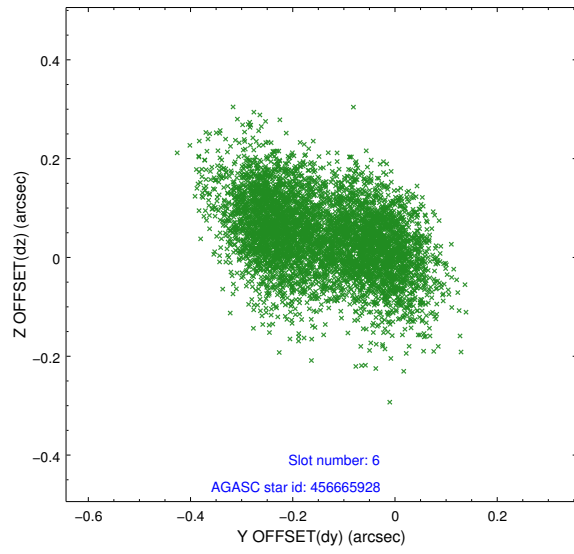
2.4.2 Slot 4



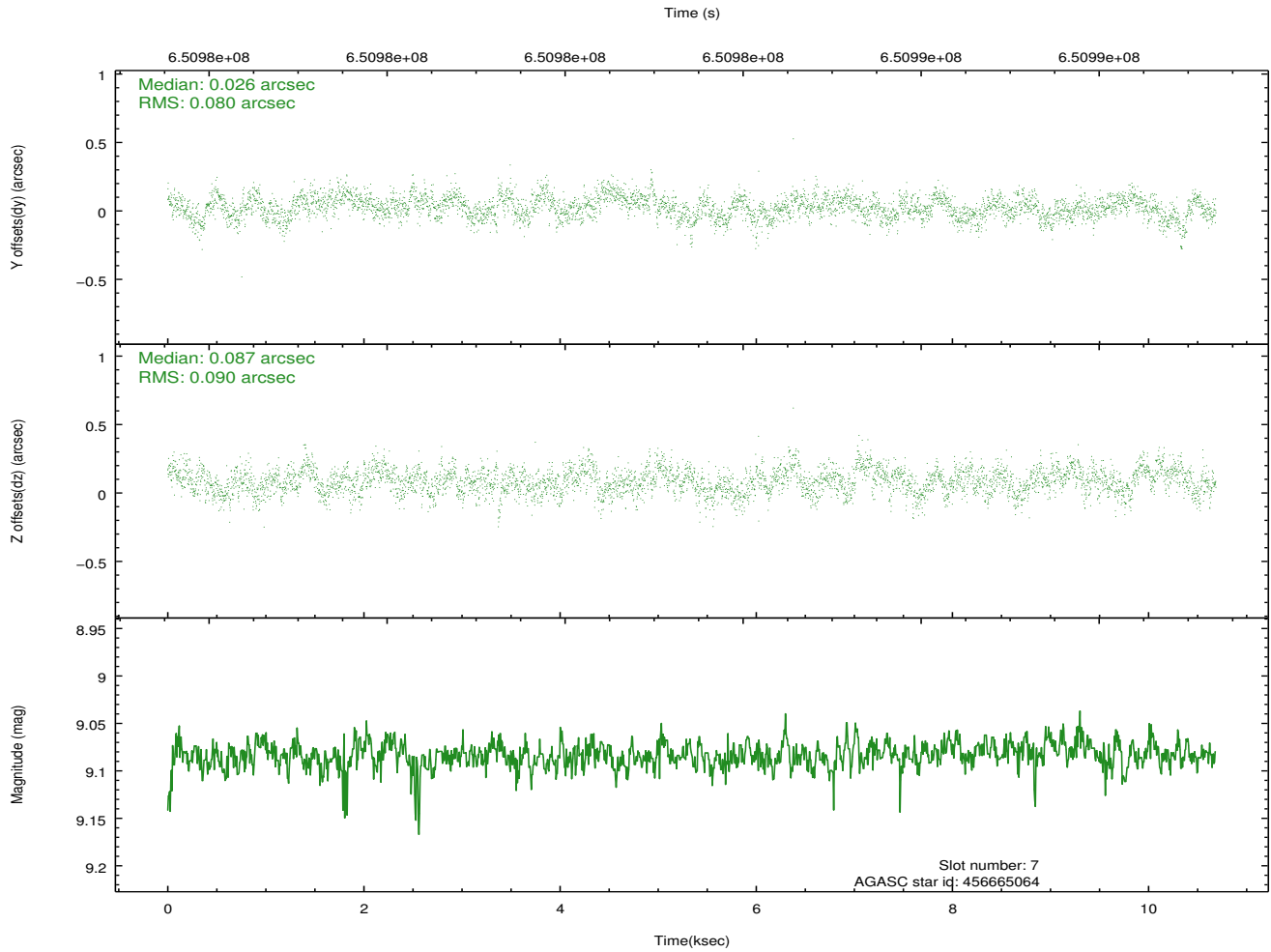
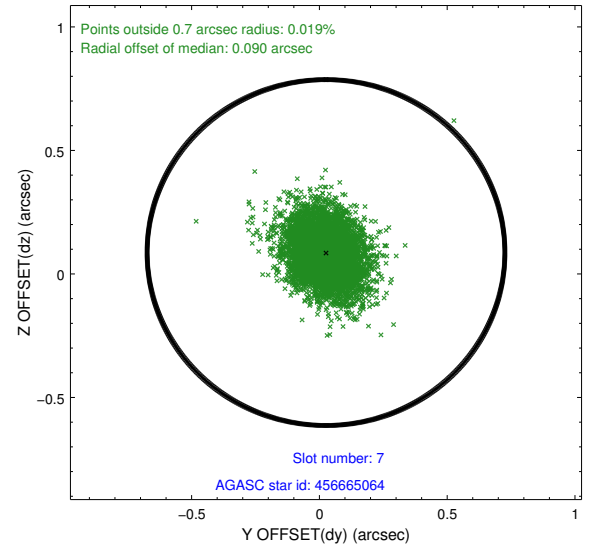
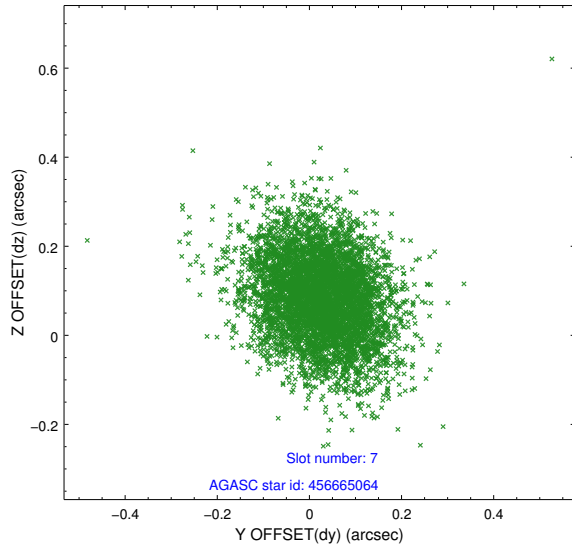
2.4.3 Slot 5



2.4.4 Slot 6

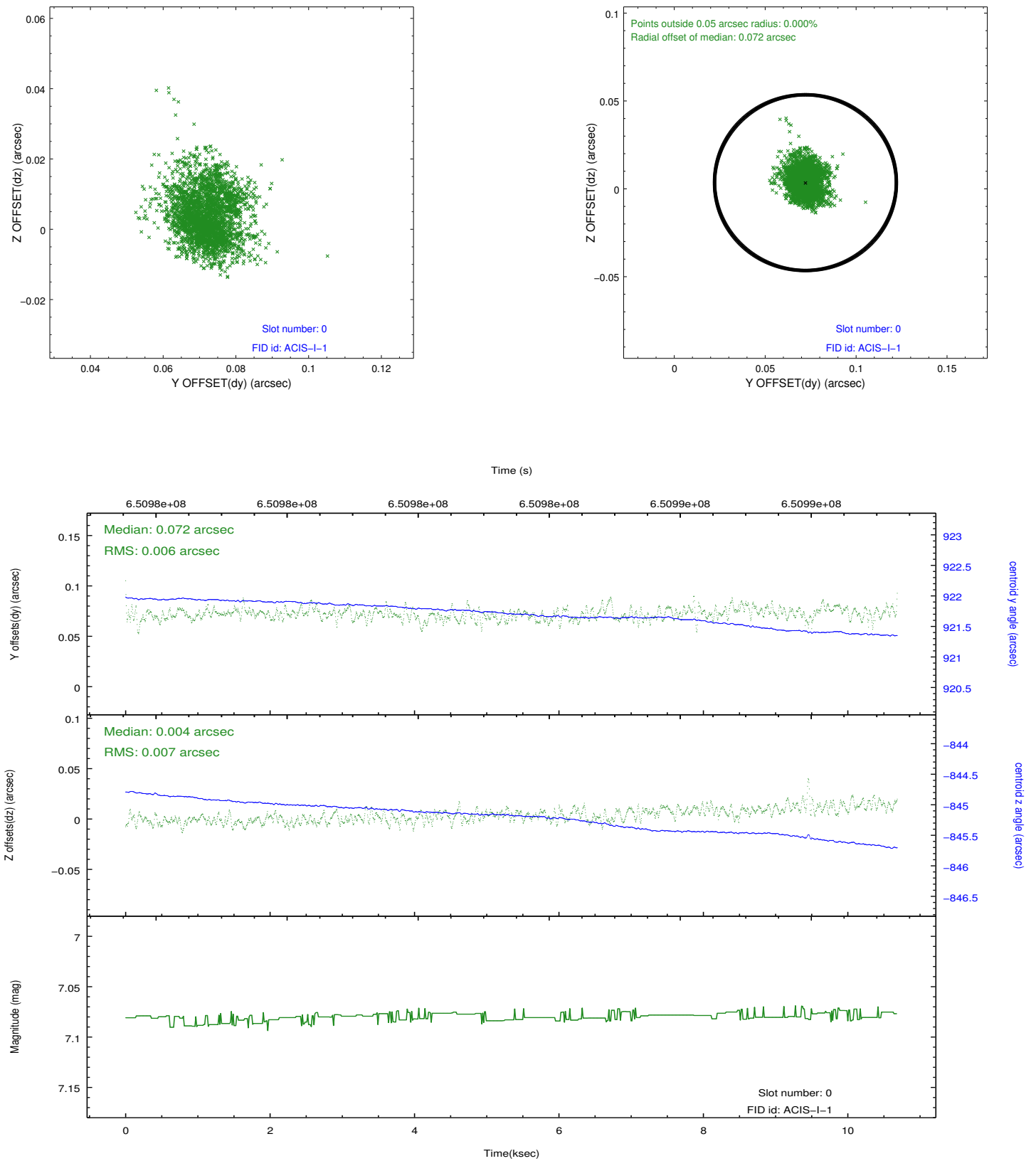


2.4.5 Slot 7

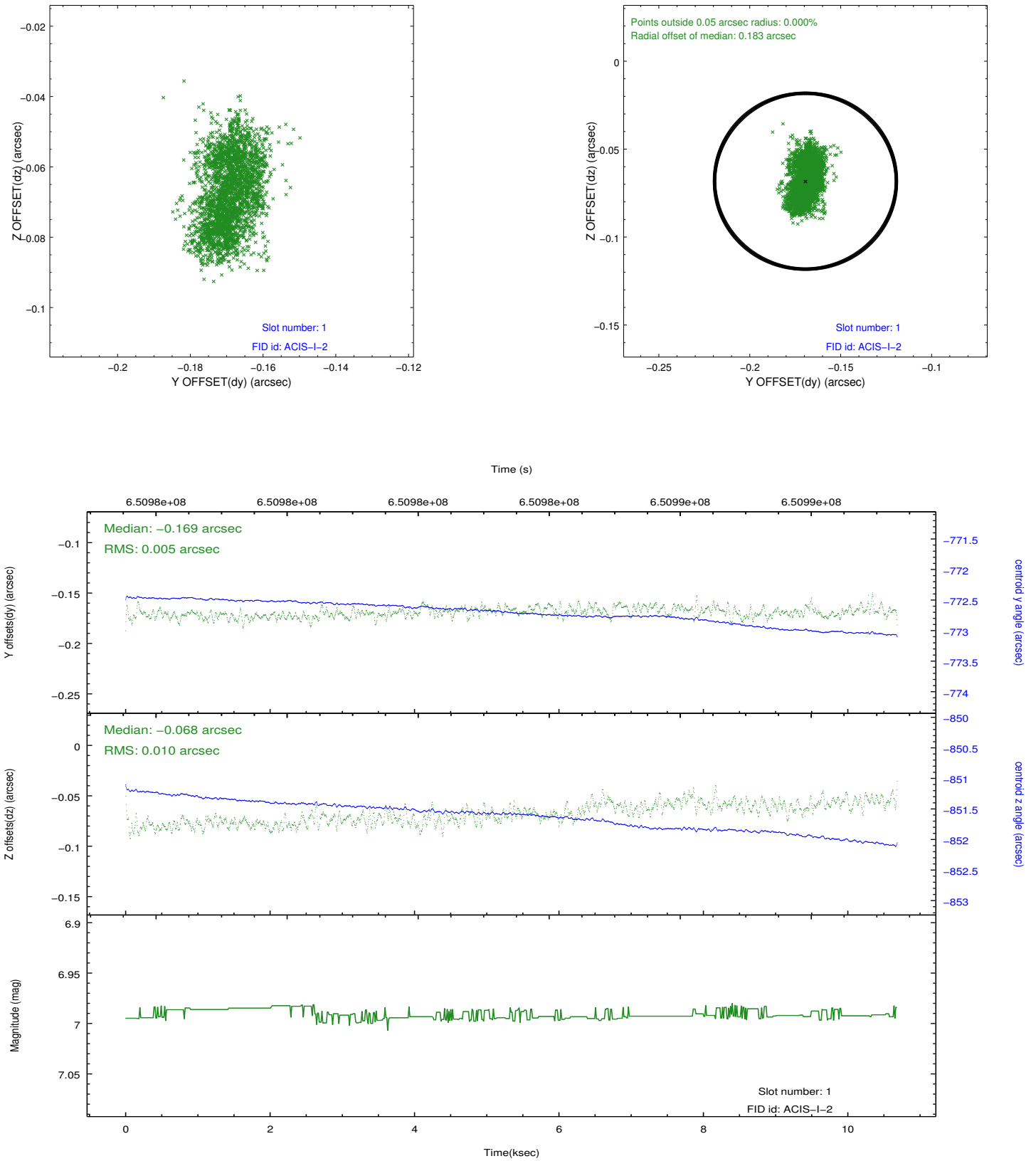


2.5 FID Slots

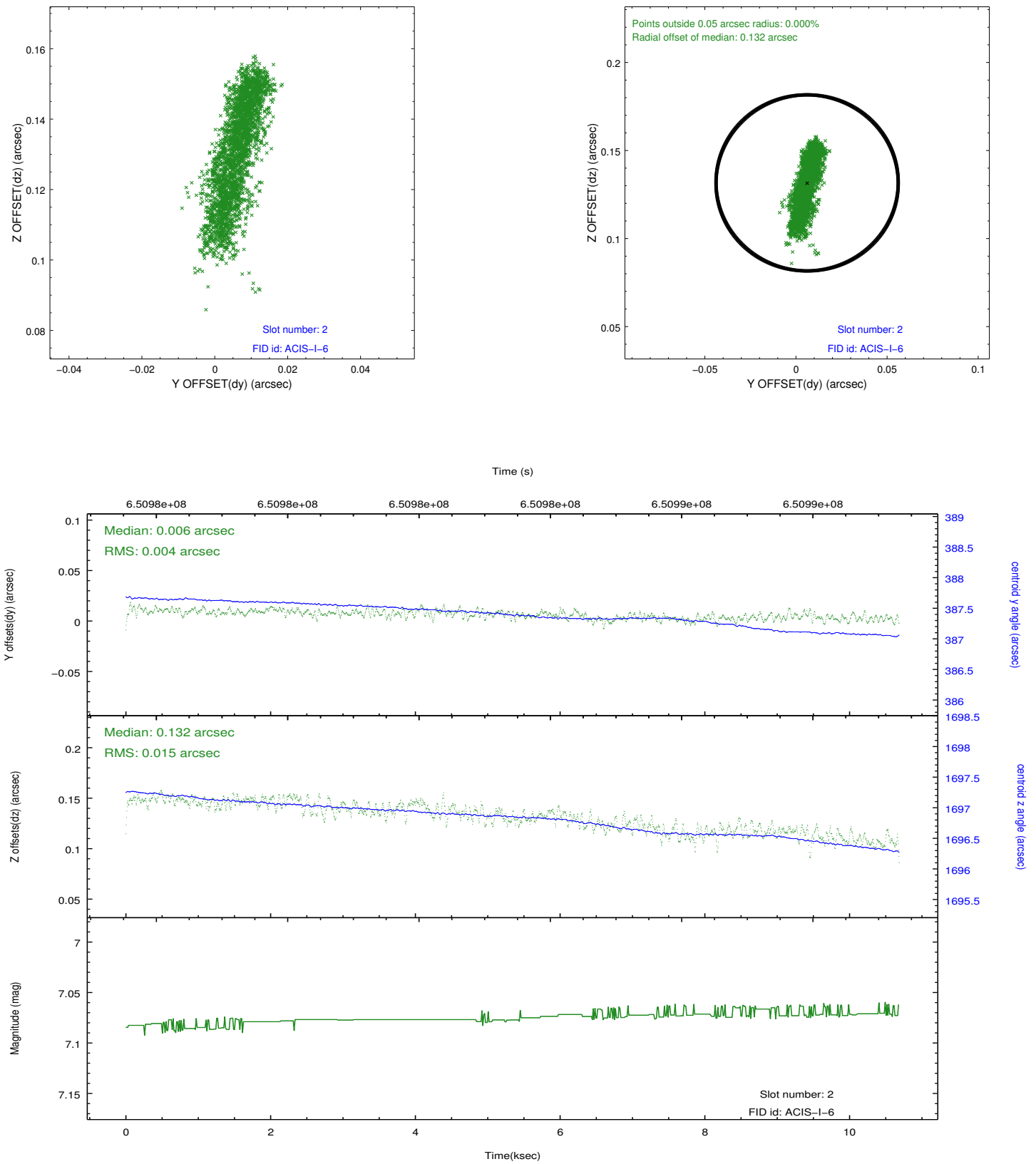
2.5.1 Slot 0



2.5.2 Slot 1



2.5.3 Slot 2



A Summary

A.1 Status

V&V Scientist	Beth Sundheim
V&V Date (YYYY-MM-DD)	2018.08.19
V&V Edition	1
V&V Disposition and Status	OK
V&V Charge Time	10.45654384017

A.2 Comments

Joint proposal with XMM.