

V&V Reference Report

L2 ASCDS Version : 10.7.1

Observation 22247 - L2 Version 1
Chandra X-Ray Center

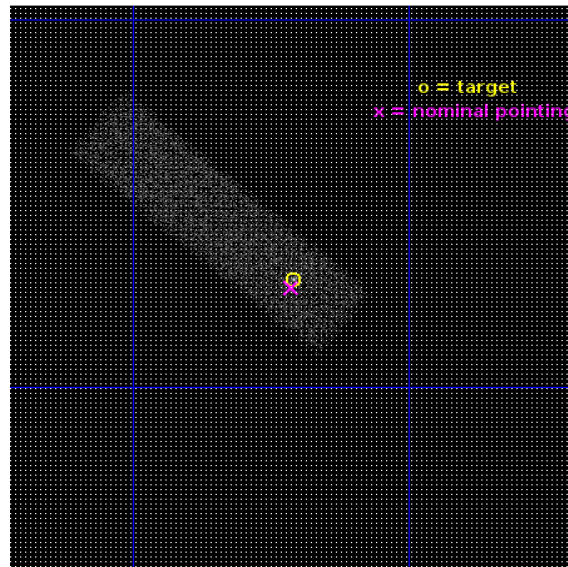
L2 Processing Date : Jun 4 2019

Contents

1	Front	2
2	OBI	3
2.1	OBI	3
2.1.1	Images	3
2.1.2	Bias	3
2.1.3	Parameters	4
2.1.4	Events	4
2.2	Compared Parameters	5
2.3	Aspect	6
2.4	Star Slots	9
2.4.1	Slot 3	9
2.4.2	Slot 4	10
2.4.3	Slot 5	11
2.4.4	Slot 6	12
2.4.5	Slot 7	13
2.5	FID Slots	14
2.5.1	Slot 0	14
2.5.2	Slot 1	15
2.5.3	Slot 2	16
A	Summary	17
A.1	Status	17
A.2	Comments	17

1 Front

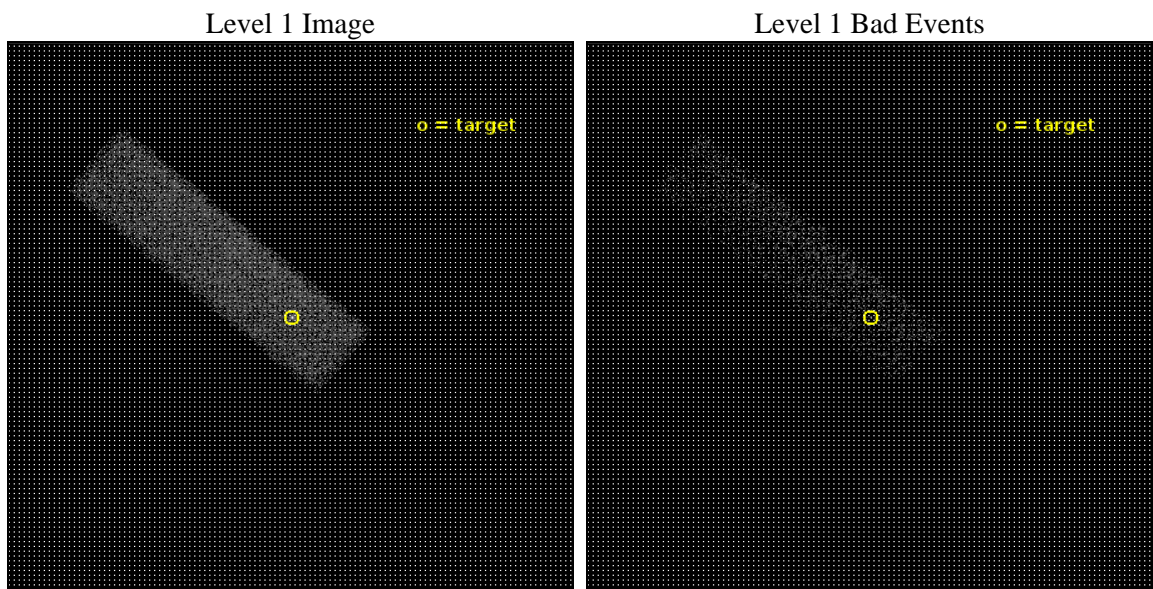
seq_num	703898	Sequence number
obs_id	22247	Observation id
title	C-BASS: A Chandra Legacy Survey of AGN at the Highest Spatial Resolutions	Proposal title
observer	Michael Koss	Principal investigator
object	PKS 0706-15	Source name
dtcycle	0	
cycle	P	events from which exps? Prim/Second/Both
ra_targ	107.302155	Observer's specified target RA [deg]
dec_targ	-15.450997	Observer's specified target Dec [deg]
ra_nom	107.30312798222	Nominal RA [deg]
dec_nom	-15.454810993348	Nominal Dec [deg]
roll_nom	220.15685512511	Nominal Roll [deg]
revision	1	Processing version of data
ontime	10060.474382758	Sum of GTIs [s]
livetime	9569.5561521527	Livetime [s]
ontime7	10060.474382758	Sum of GTIs [s]
l2events	14380	Number of level 2 events



2 OBI

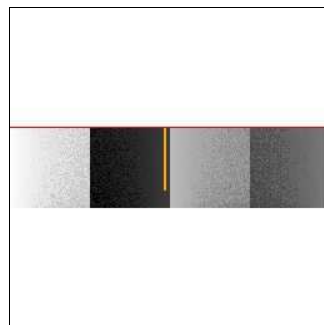
2.1 OBI

2.1.1 Images



2.1.2 Bias

Chip 7



2.1.3 Parameters

obi_num	0	Obi number	sched_exp_time	10000.000000	[s] Scheduled observation exposure time
ascdsver	10.7.1	Processing system revision	ontime	10060.474382758	Sum of GTIs [s]
caldsver	4.8.3	 	ontime7	10060.474382758	Sum of GTIs [s]
date	2019-06-04T13:22:18	Date and time of file creation	l1events	28459	Number of level 1 events
revision	1	Processing version of data			

2.1.4 Events

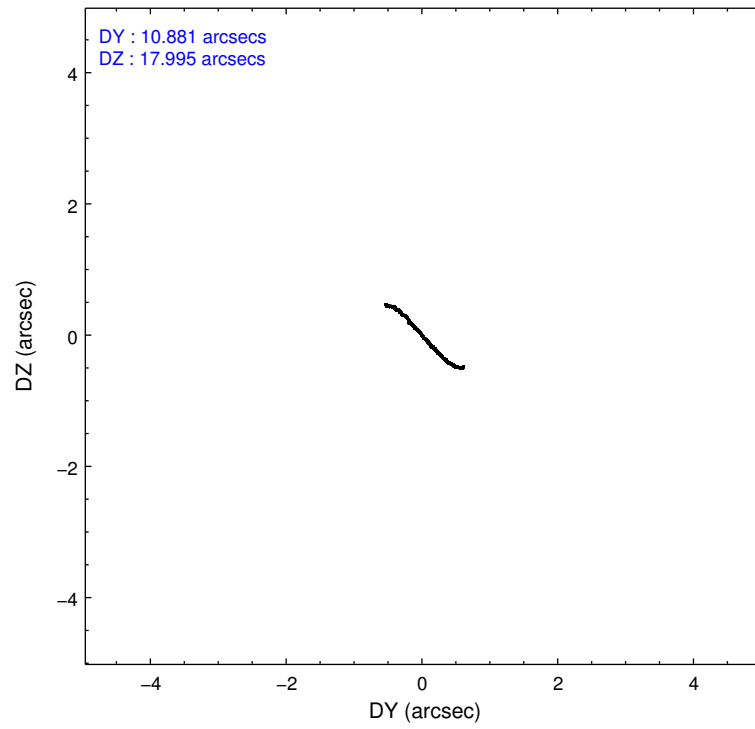
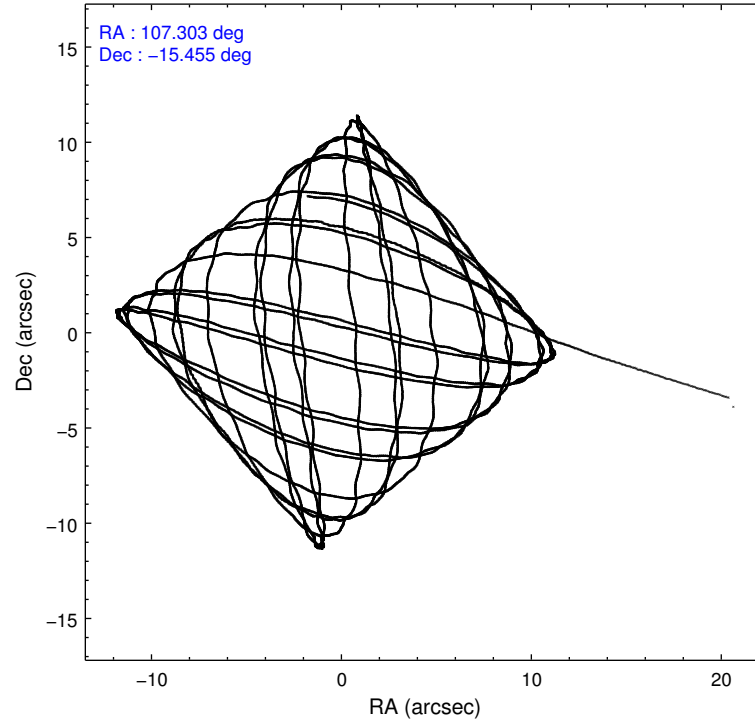
	ccd 7
level 1 events	28459
rejected events	13657
rejected %	47%

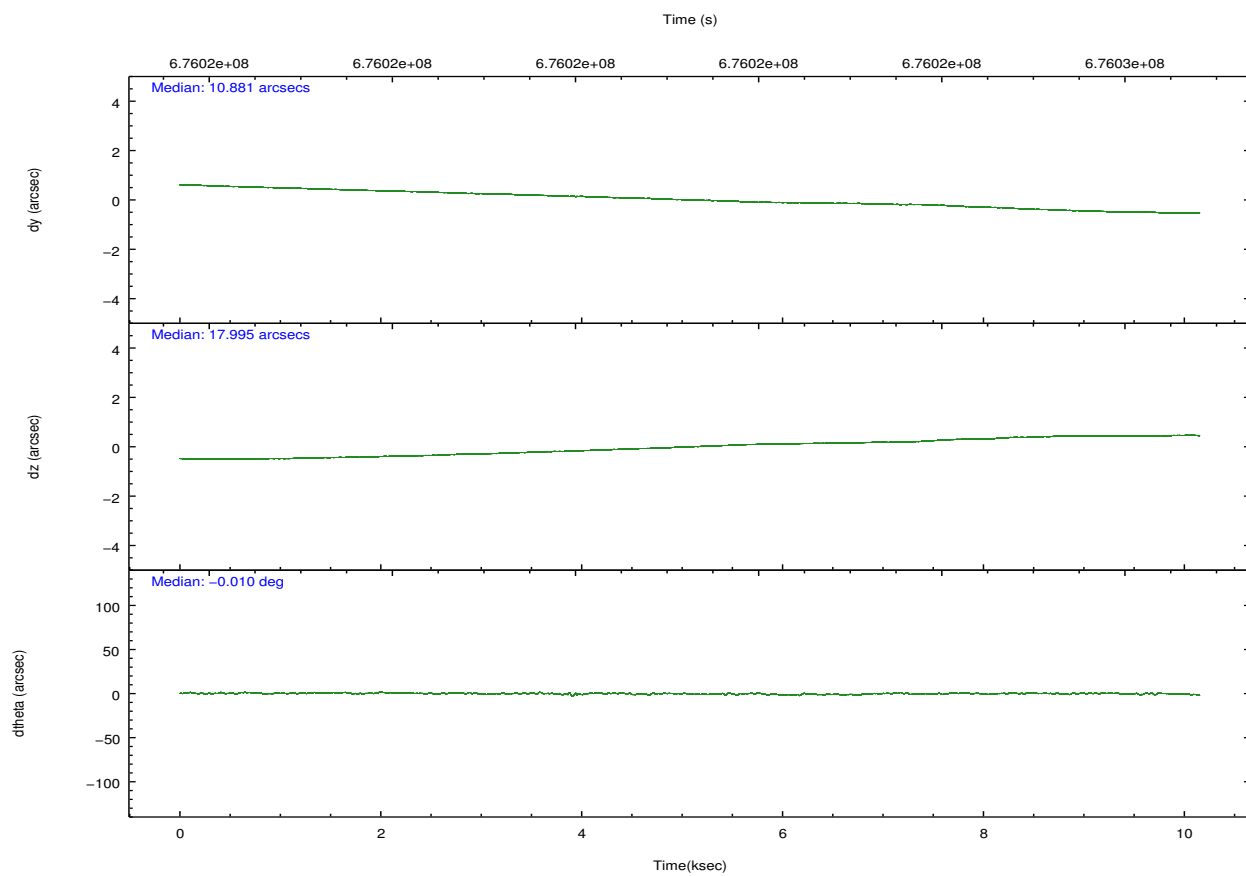
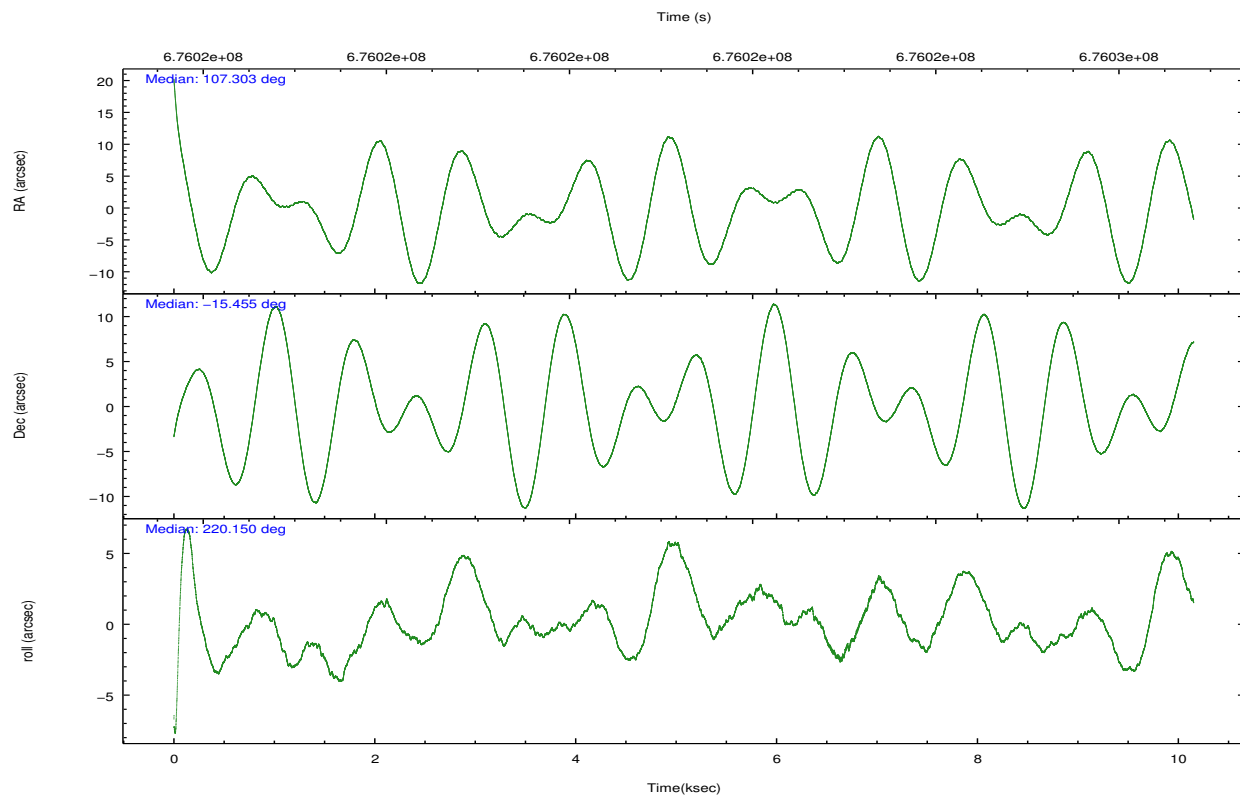
	ccd 7
grade 0 events	1795
	6%
grade 1 events	49
	0%
grade 2 events	3058
	10%
grade 3 events	1627
	5%
grade 4 events	1614
	5%
grade 5 events	2610
	9%
grade 6 events	6709
	23%
grade 7 events	10997
	38%

2.2 Compared Parameters

Parameter	Planned	Actual	Parameter	Planned	Actual
Instrument	ACIS	ACIS	Obspar format version number	7	7
Detector	ACIS-7	ACIS-7	Obspar file type	PREDICTED	ACTUAL
Grating	NONE	NONE	Obspar update status	NONE	UPDATED
Data mode	VFAINT	VFAINT	Number of optional ACIS chips dropped	0	0
Observation mode	POINTING	POINTING	On-chip summing requested	N	N
[deg] Pointing RA	107.312410	107.3031279822194	Subarray requested	CUSTOM	1/4
[deg] Pointing Dec	-15.428884	-15.45481099334777	Subarray start row	385	385
[deg] Pointing Roll	220.002731	220.1568551251127	Subarray row count	256	256
[mm] SIM focus pos	-0.684267	-0.6828225247311905	Alternating exposures requested	N	N
[mm] SIM defocus	0	0.001444936568705701	[s] Primary exposure time	0.000000	0.8
[mm] SIM translation stage pos	-190.132523	-190.145094680475			
[mm] SIM translation stage offset	0	0.01257209746719923			
[s] Observation start time (MET)	676016312.184000	676014958.50932			
Observation start date	2019-06-04T06:17:23	2019-06-04T05:55:58			
[s] Observation end time (MET)	676026312.184000	676027425.07257			
Observation end date	2019-06-04T09:04:03	2019-06-04T09:23:45			
Read mode	TIMED	TIMED			

2.3 Aspect



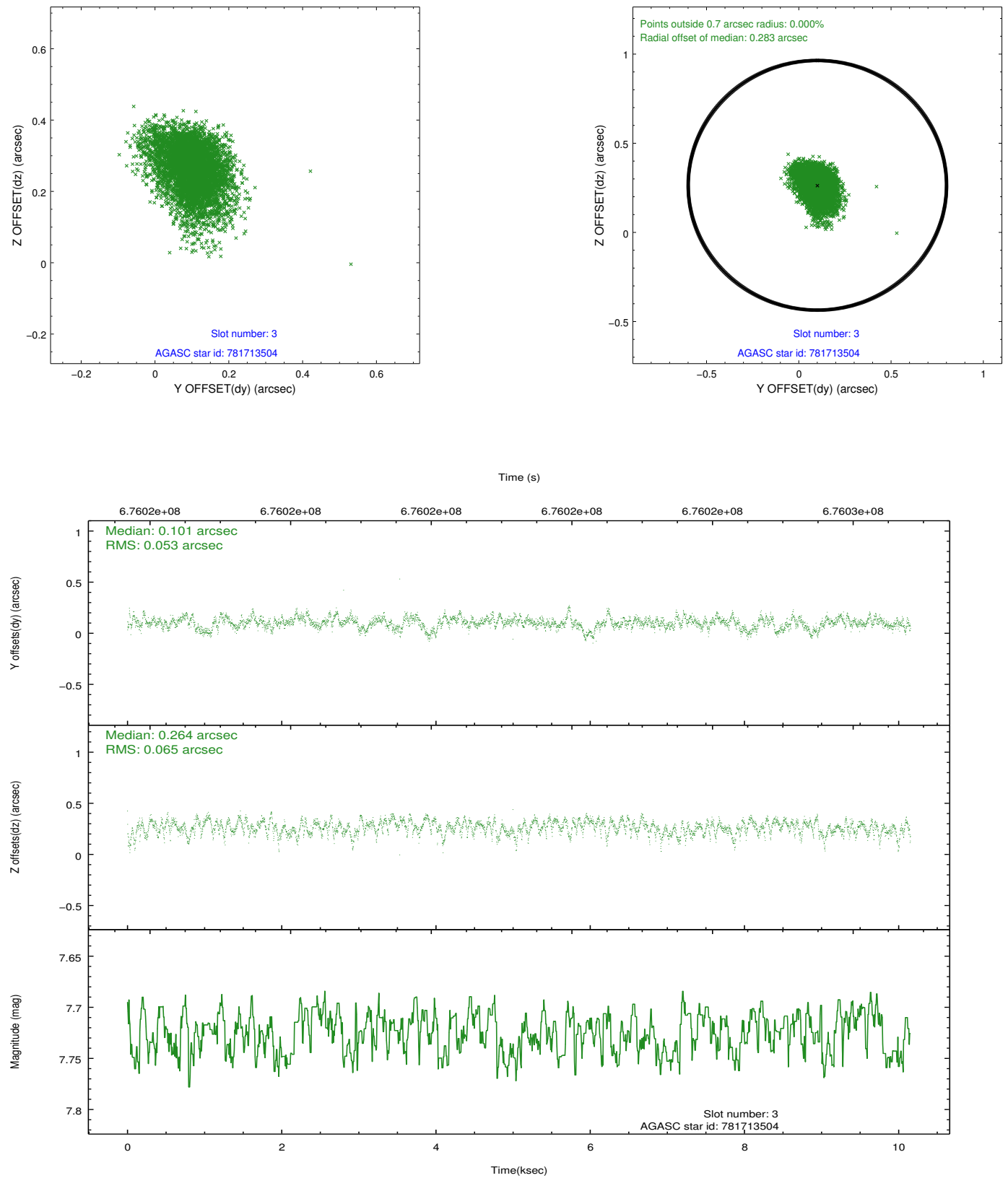


Slot Statistics

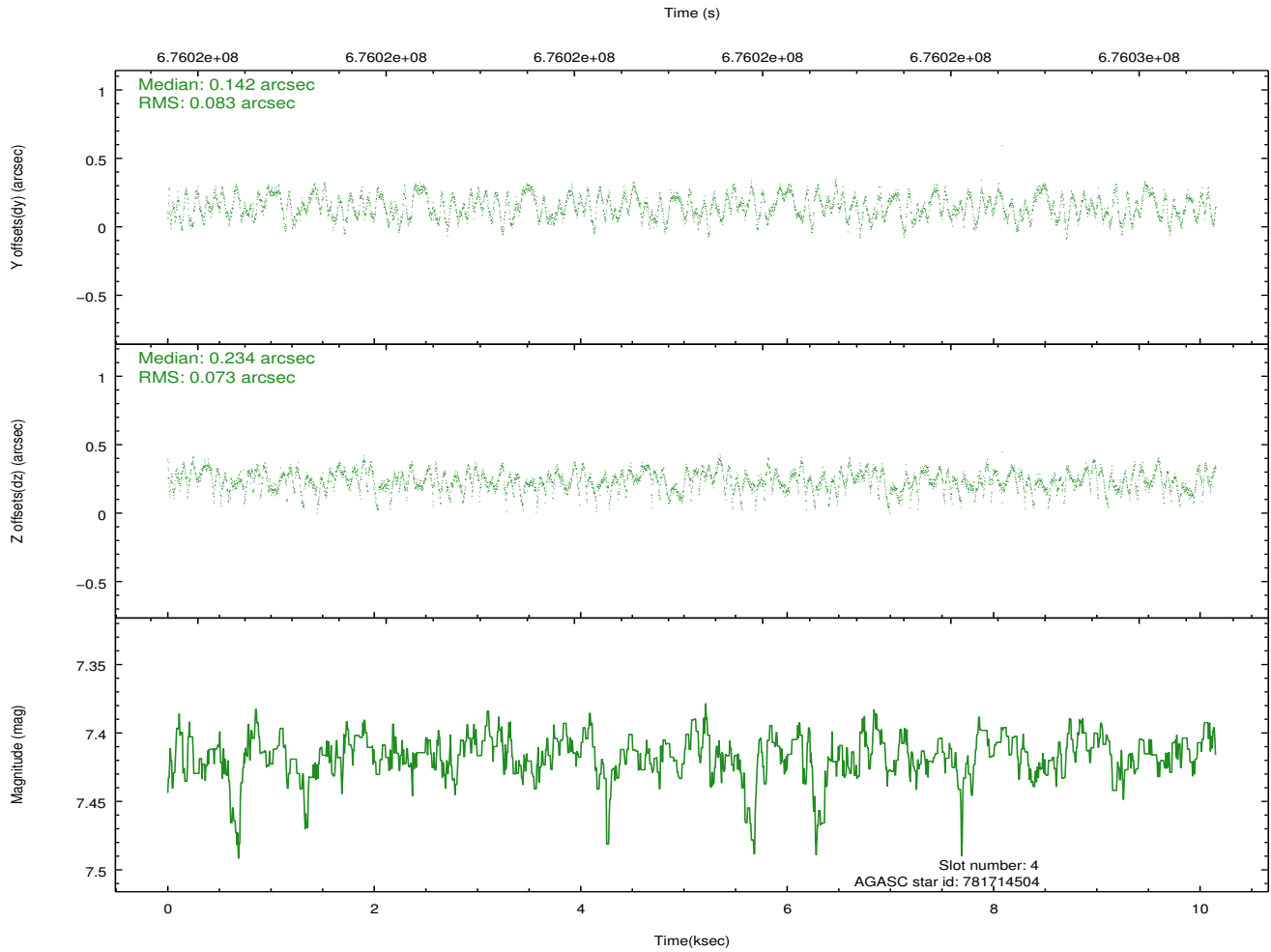
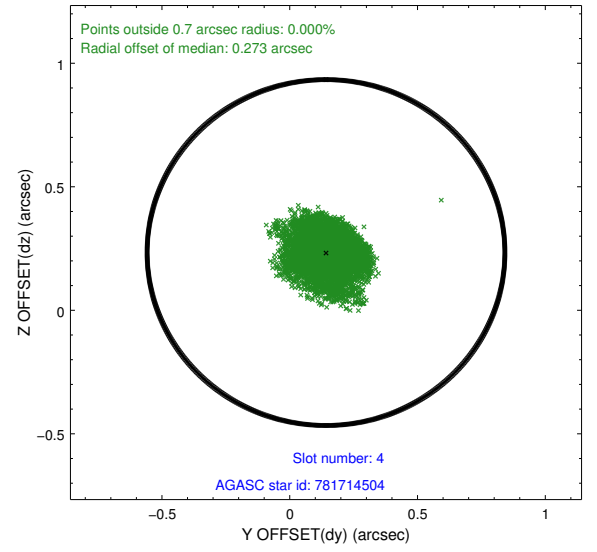
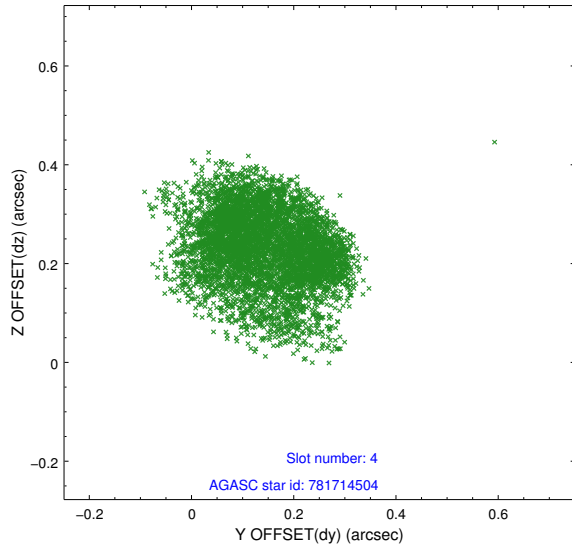
pt	status	used	id	mag	n_pts	frac_pts	med_dy	med_dz	dr1	dr2	ra	dec	mean_y	mea
0	FID		ACIS-S-1	7.20	2477	1.000	0.336	-0.068	0.010	0.017	0.000000	0.000000	932.77	-1734
1	FID		ACIS-S-2	7.10	2477	1.000	-0.182	-0.116	0.013	0.020	0.000000	0.000000	-763.36	-1740
2	FID		ACIS-S-5	7.21	2477	1.000	-0.177	0.191	0.012	0.021	0.000000	0.000000	-1817.30	162
3	GUIDE	used	781713504	7.72	4953	1.000	0.101	0.264	0.087	0.150	107.346929	-15.026443	-1022.67	-1032
4	GUIDE	used	781714504	7.42	4953	1.000	0.142	0.234	0.121	0.178	107.398978	-15.243168	-659.73	-318
5	GUIDE	used	781718624	8.50	4950	1.000	0.147	0.019	0.106	0.179	106.904675	-15.265680	708.31	-1359
6	GUIDE	used	781723200	7.34	4950	1.000	-0.128	-0.487	0.089	0.154	107.076747	-15.677862	1202.53	161
7	GUIDE	used	781857472	8.26	4949	1.000	-0.249	-0.025	0.123	0.259	108.189490	-15.501788	-2157.96	2161

2.4 Star Slots

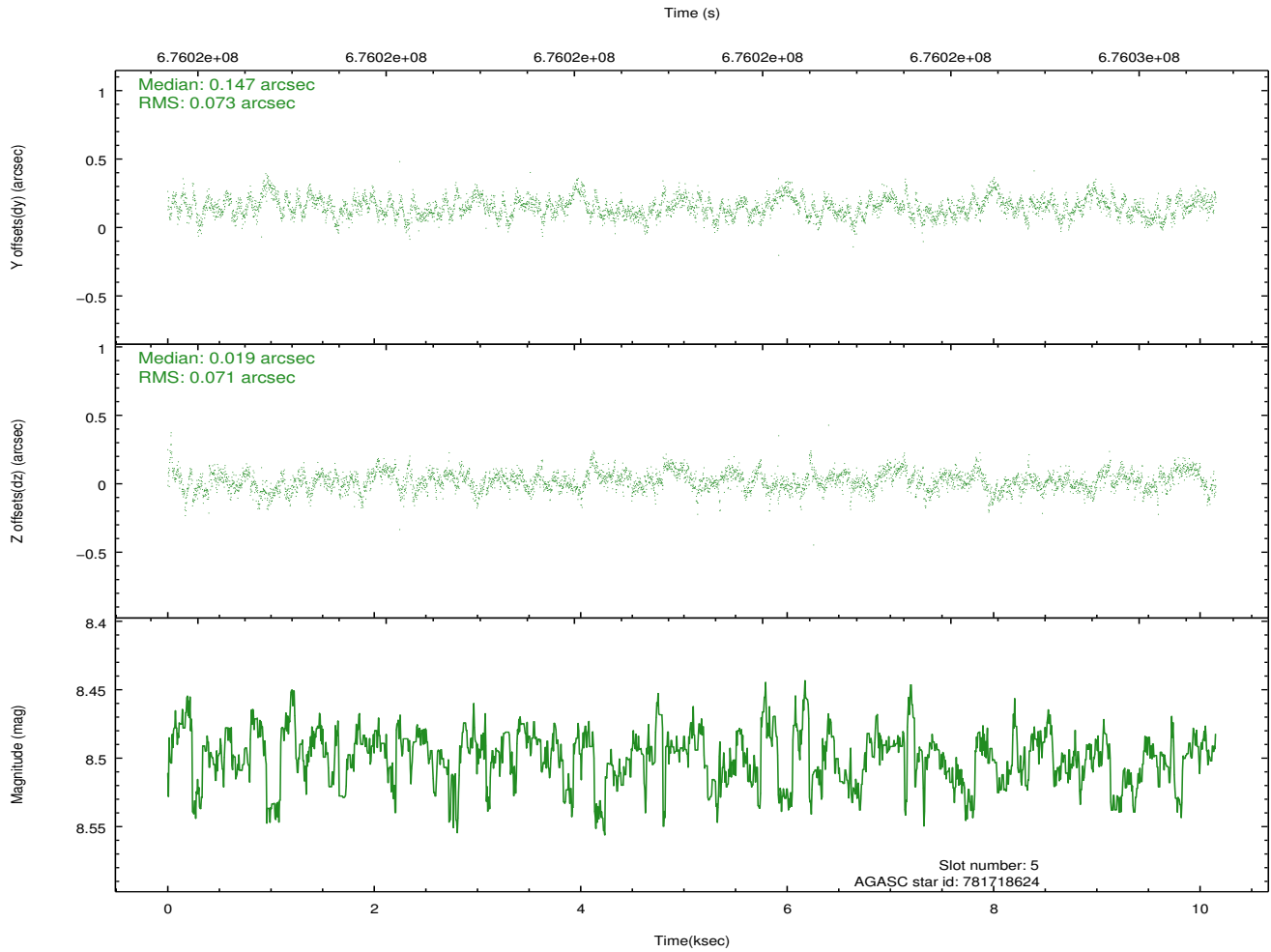
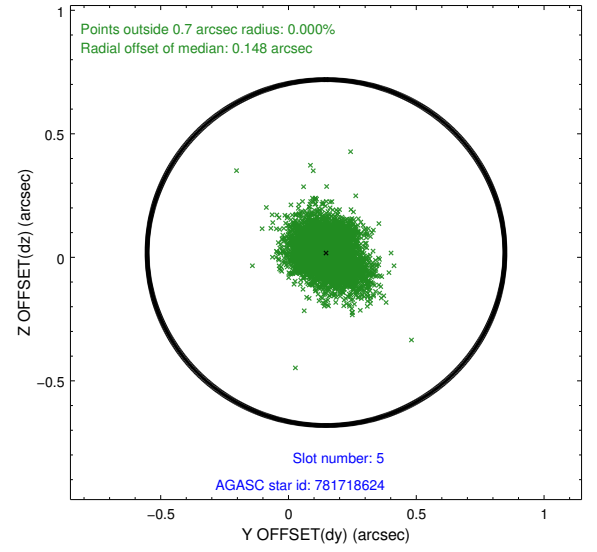
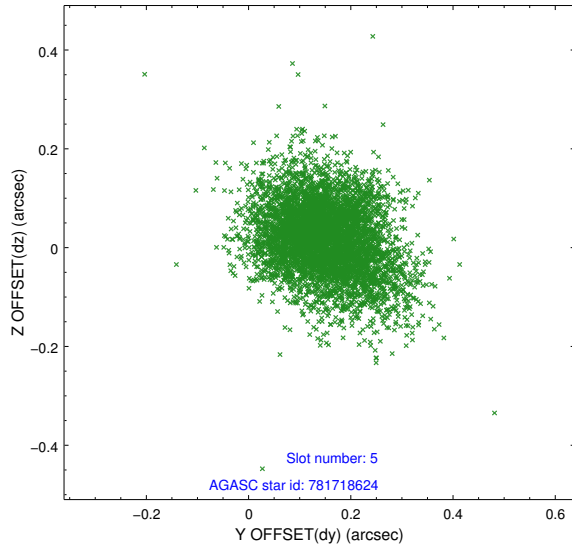
2.4.1 Slot 3



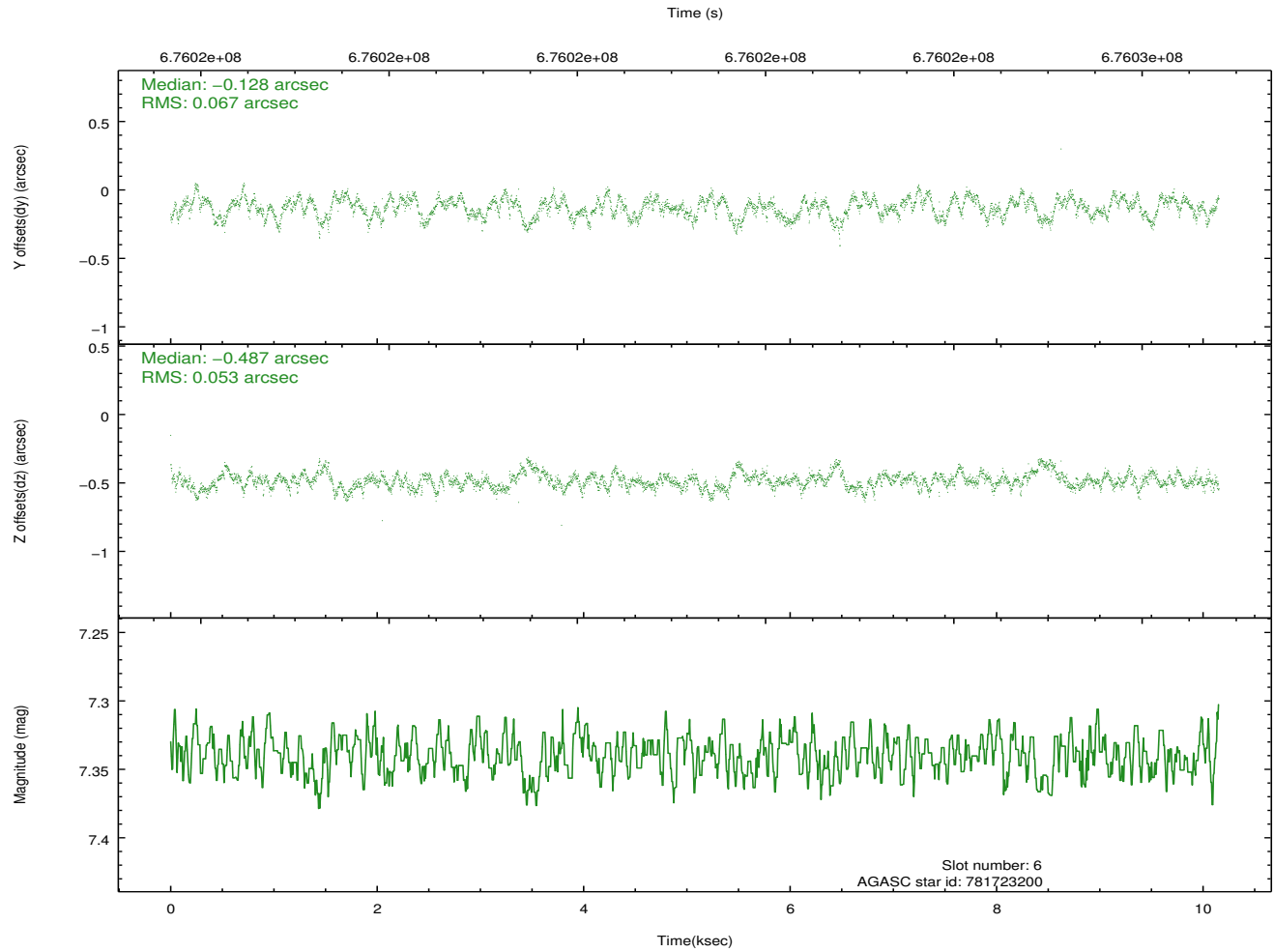
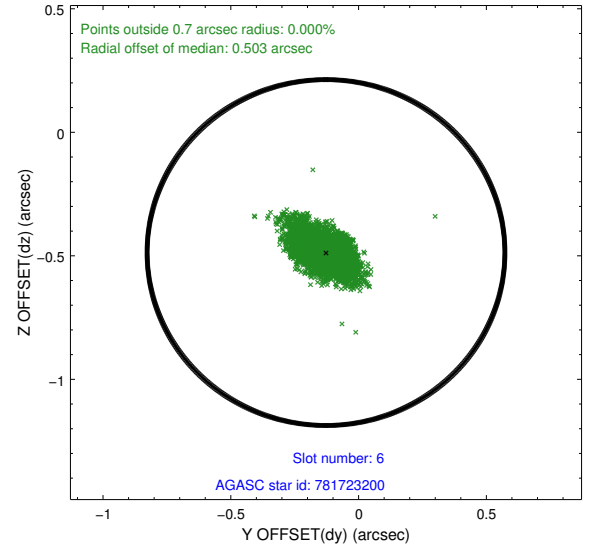
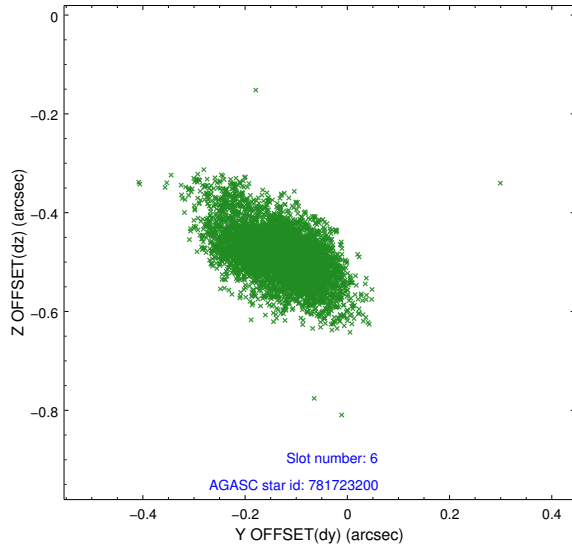
2.4.2 Slot 4



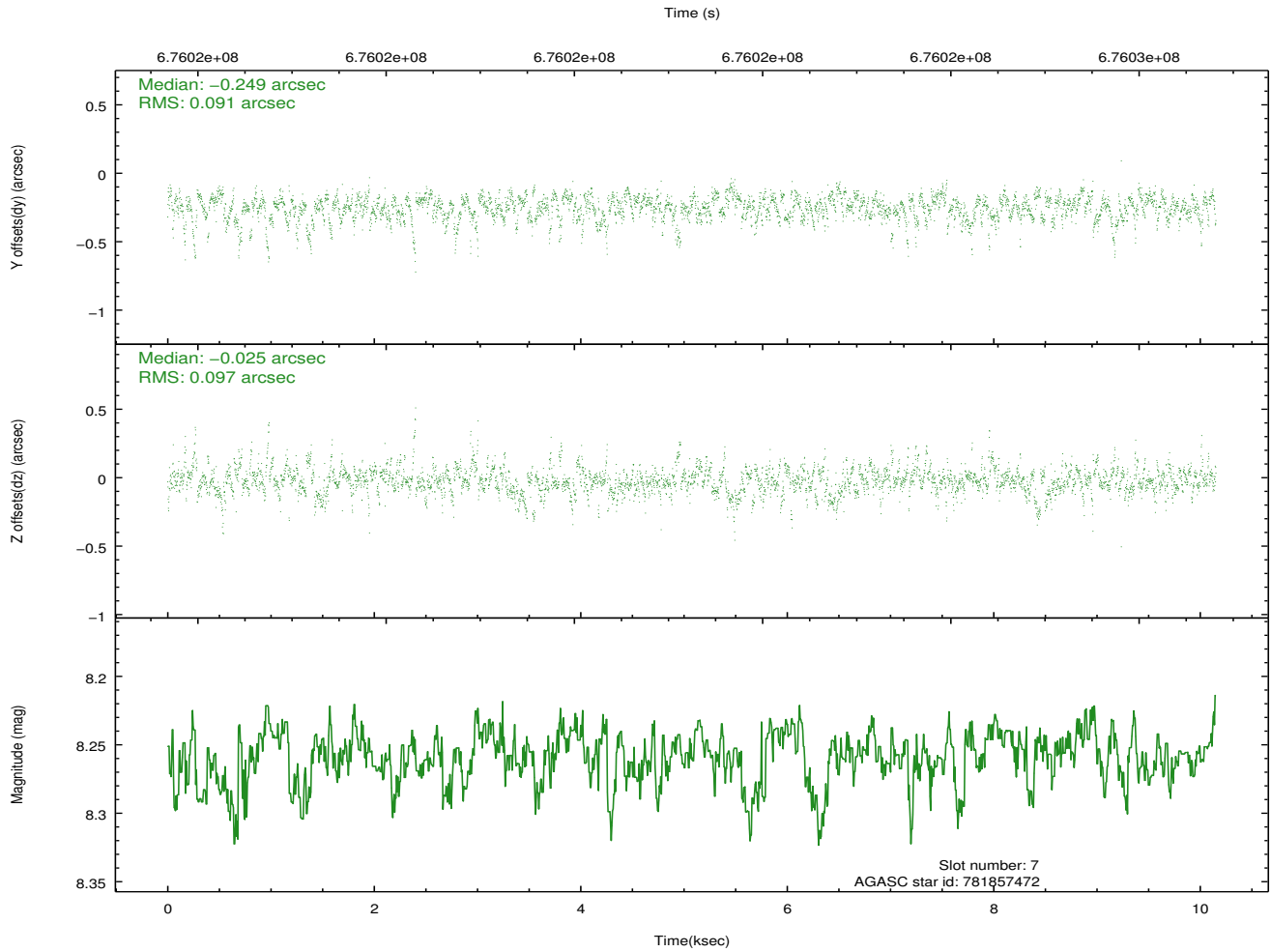
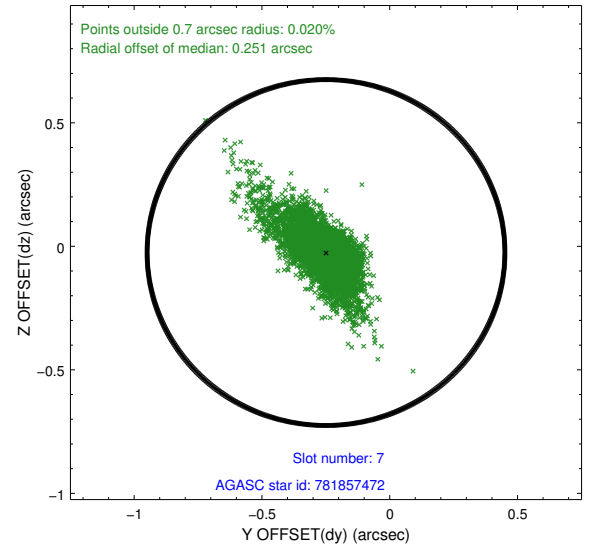
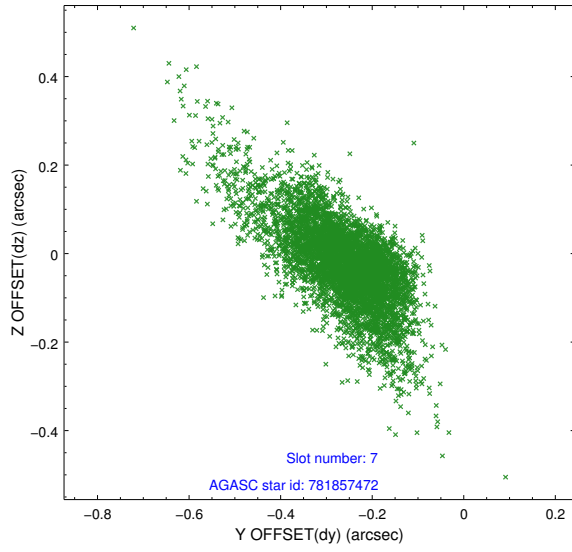
2.4.3 Slot 5



2.4.4 Slot 6

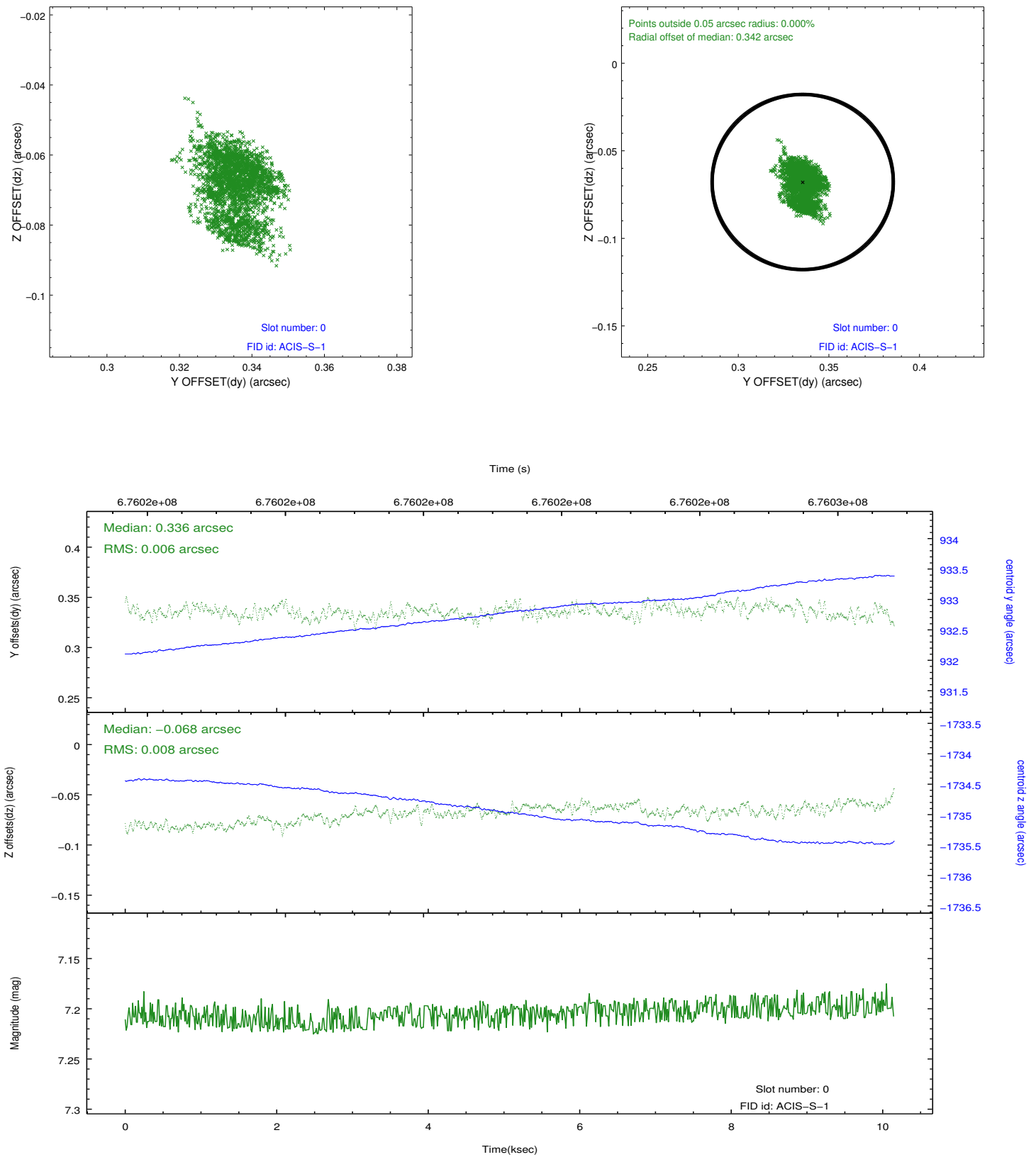


2.4.5 Slot 7

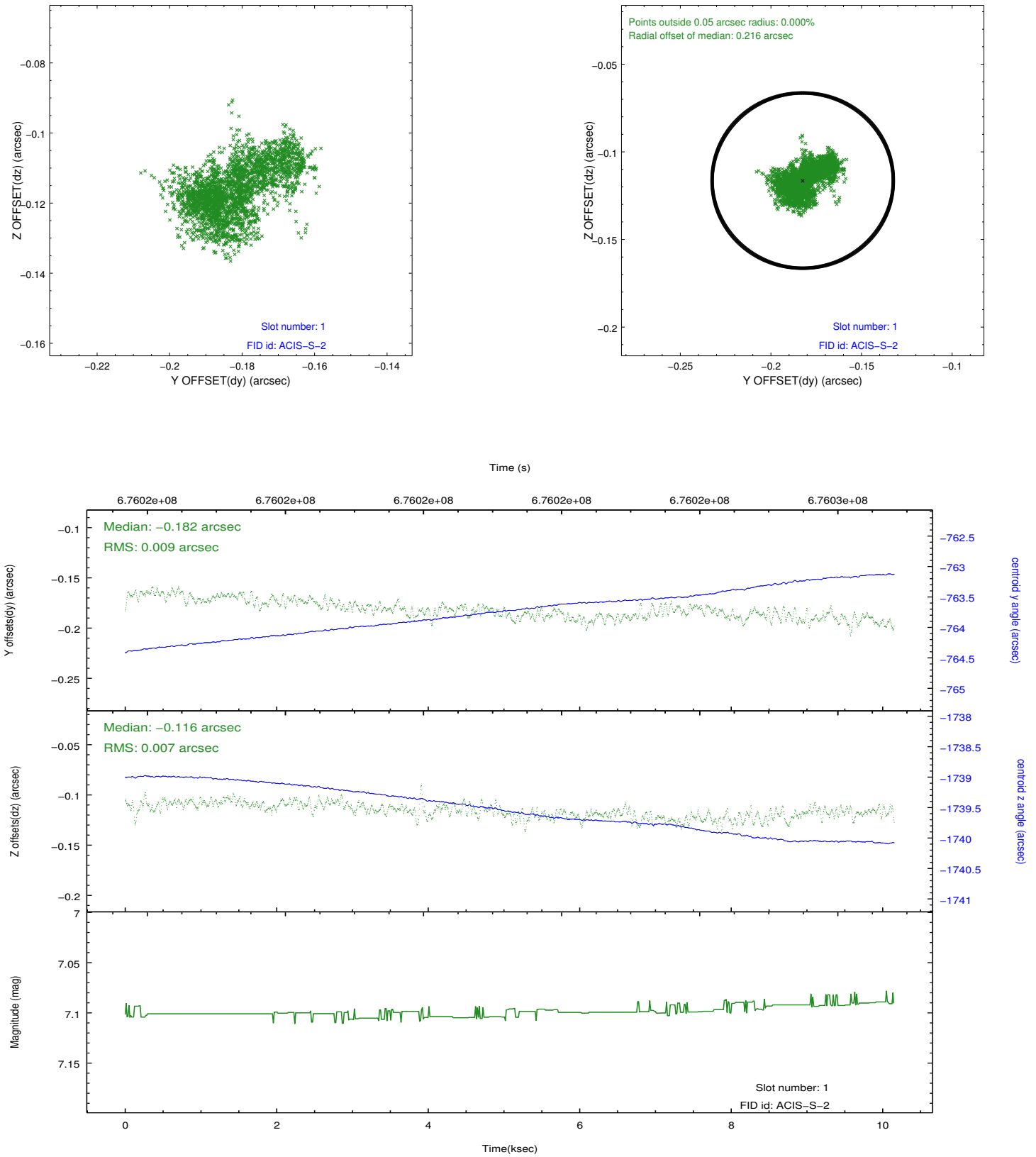


2.5 FID Slots

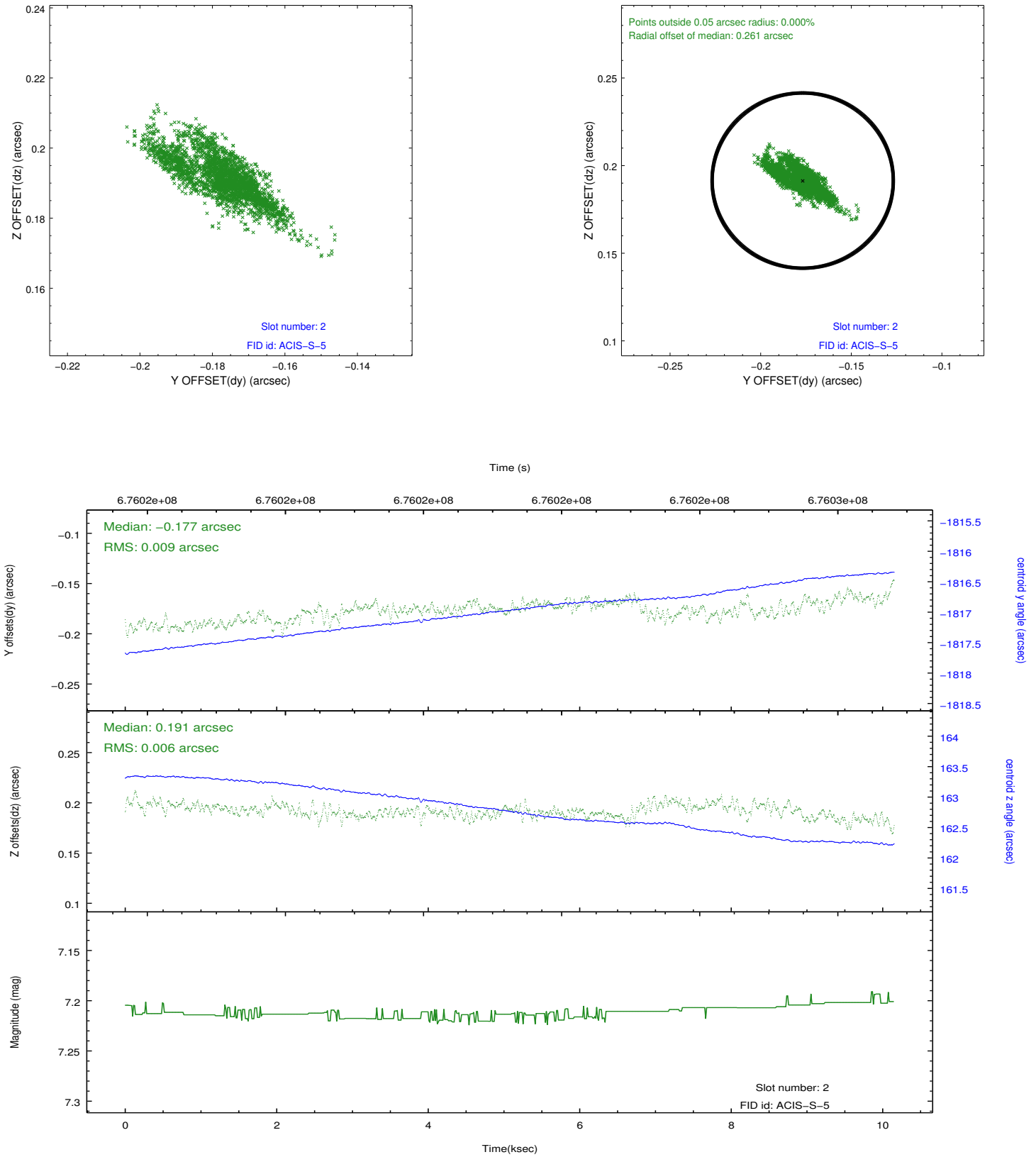
2.5.1 Slot 0



2.5.2 Slot 1



2.5.3 Slot 2



A Summary

A.1 Status

V&V Scientist	Beth Sundheim
V&V Date (YYYY-MM-DD)	2019.06.04
V&V Edition	1
V&V Disposition and Status	OK
V&V Charge Time	10.060474382758

A.2 Comments