

V&V Reference Report

L2 ASCDS Version : 10.7.1

Observation 21490 - L2 Version 1
Chandra X-Ray Center

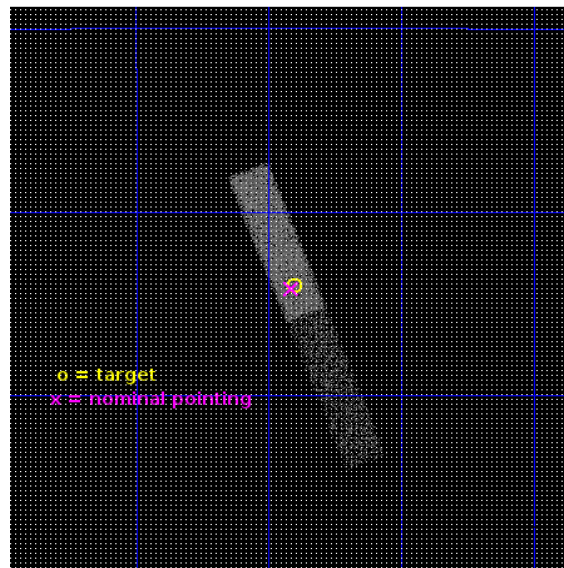
L2 Processing Date : Apr 4 2019

Contents

1	Front	2
2	OBI	3
2.1	OBI	3
2.1.1	Images	3
2.1.2	Bias	3
2.1.3	Parameters	4
2.1.4	Events	4
2.2	Compared Parameters	5
2.3	Aspect	6
2.4	Star Slots	9
2.4.1	Slot 3	9
2.4.2	Slot 4	10
2.4.3	Slot 5	11
2.4.4	Slot 6	12
2.4.5	Slot 7	13
2.5	FID Slots	14
2.5.1	Slot 0	14
2.5.2	Slot 1	15
2.5.3	Slot 2	16
A	Summary	17
A.1	Status	17
A.2	Comments	17

1 Front

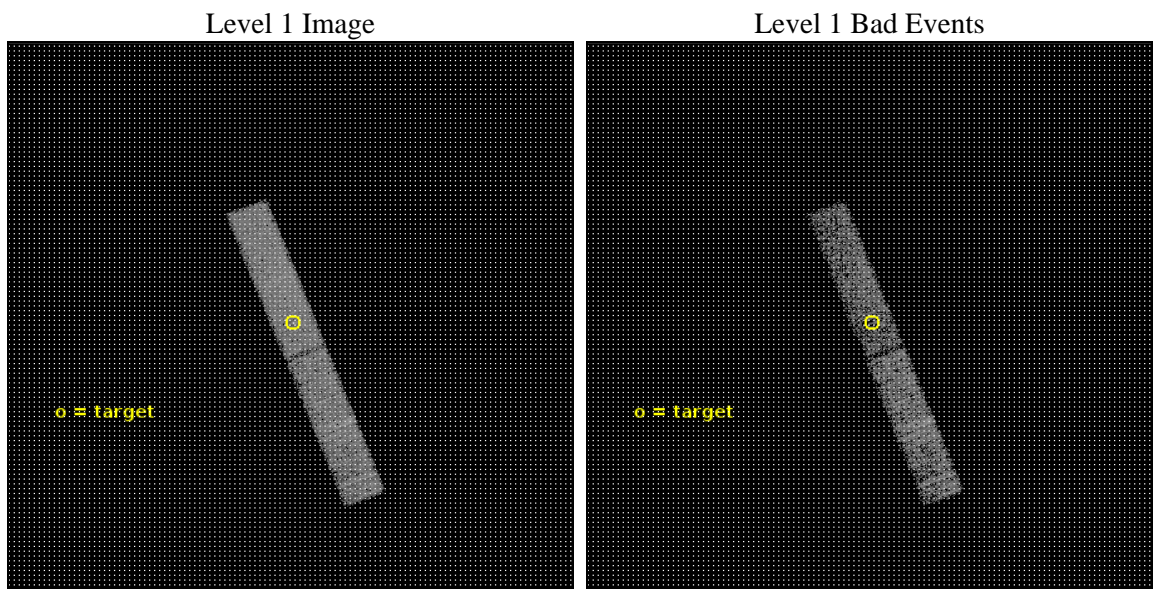
seq_num	703783	Sequence number
obs_id	21490	Observation id
title	Synchrotron emission in low-redshift quasars	Proposal title
observer	Mark Birkinshaw	Principal investigator
object	MRC0421-225	Source name
dtcycle	0	
cycle	P	events from which exps? Prim/Second/Both
ra_targ	65.975833	Observer's specified target RA [deg]
dec_targ	-22.400028	Observer's specified target Dec [deg]
ra_nom	65.978601152455	Nominal RA [deg]
dec_nom	-22.402960474302	Nominal Dec [deg]
roll_nom	248.59543917471	Nominal Roll [deg]
revision	1	Processing version of data
ontime	10103.972287655	Sum of GTIs [s]
livetime	9663.3246821489	Livetime [s]
ontime6	10103.931247711	Sum of GTIs [s]
ontime7	10103.972287655	Sum of GTIs [s]
l2events	14828	Number of level 2 events



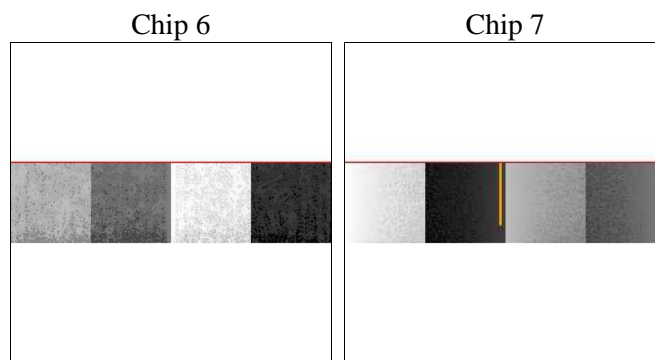
2 OBI

2.1 OBI

2.1.1 Images



2.1.2 Bias



2.1.3 Parameters

obi_num	0	Obi number	sched_exp_time	10000.000000	[s] Scheduled observation exposure time
ascdsver	10.7.1	Processing system revision	ontime	10103.972287655	Sum of GTIs [s]
caldsver	4.8.2	 	ontime6	10103.931247711	Sum of GTIs [s]
date	2019-04-04T13:59:50	Date and time of file creation	ontime7	10103.972287655	Sum of GTIs [s]
revision	1	Processing version of data	l1events	49134	Number of level 1 events

2.1.4 Events

	ccd 6	ccd 7
level 1 events	22513	26621
rejected events	19882	13576
rejected %	88%	50%

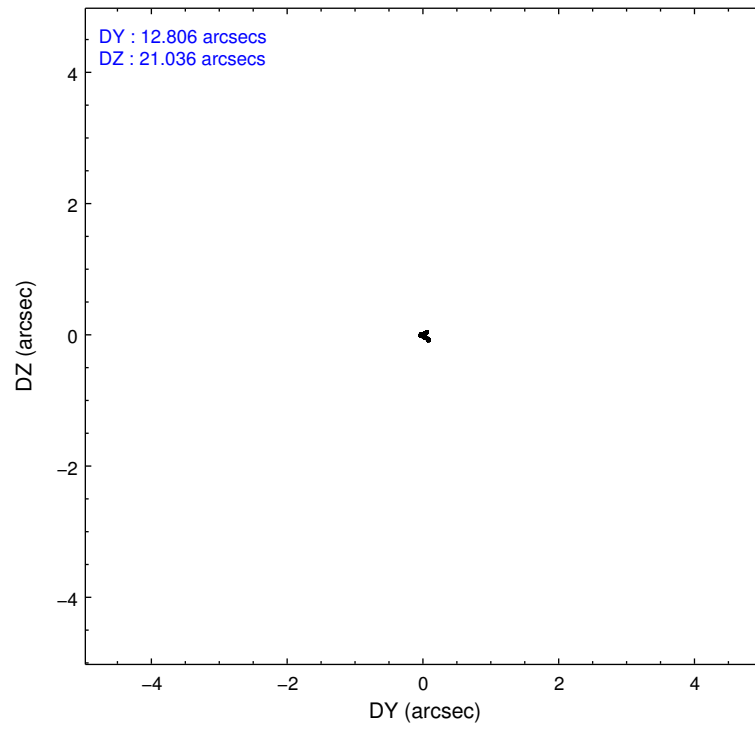
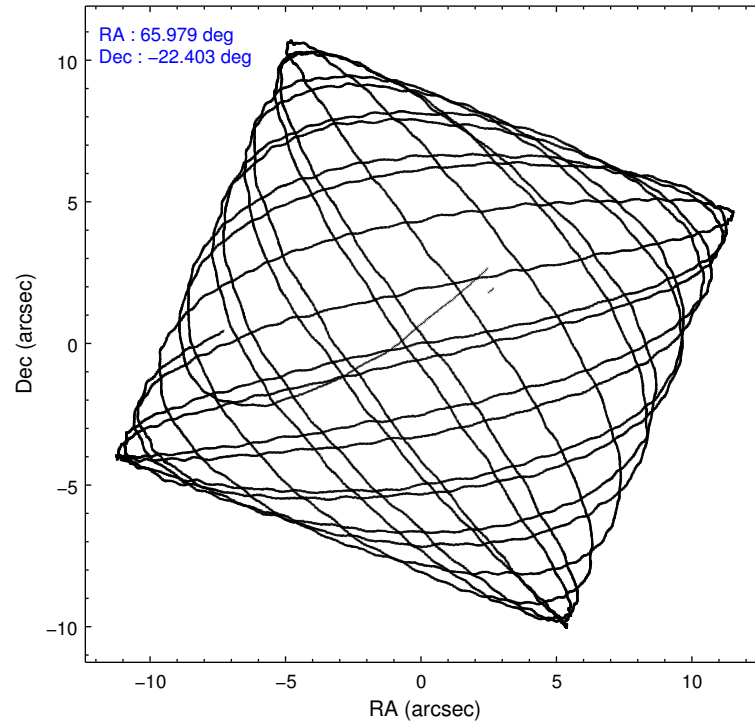
	ccd 6	ccd 7
grade 0 events	774	1428
	3%	5%
grade 1 events	6	57
	0%	0%
grade 2 events	529	2880
	2%	10%
grade 3 events	422	1362
	1%	5%
grade 4 events	363	1414
	1%	5%
grade 5 events	979	2802
	4%	10%
grade 6 events	544	5964
	2%	22%
grade 7 events	18896	10714
	83%	40%

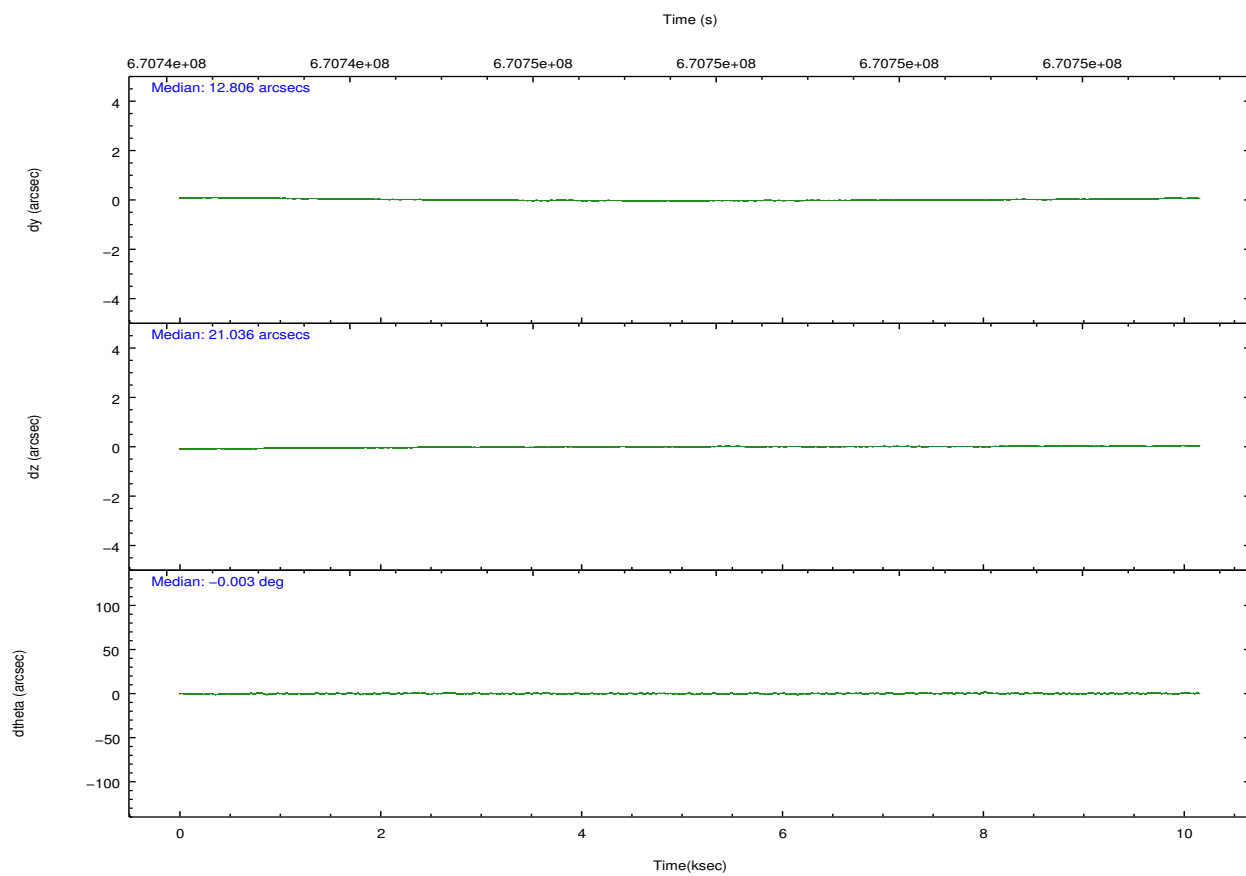
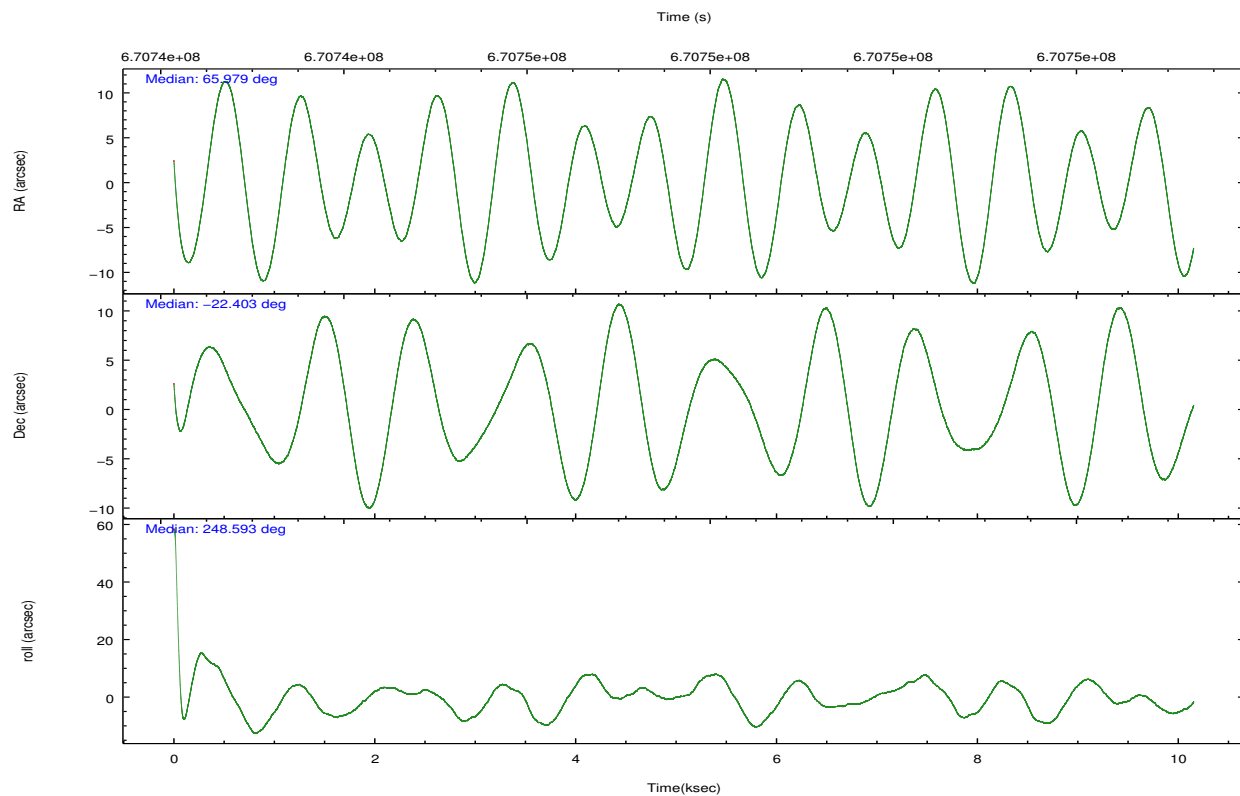
2.2 Compared Parameters

Parameter	Planned	Actual
Instrument	ACIS	ACIS
Detector	ACIS-67	ACIS-67
Grating	NONE	NONE
Data mode	VFAINT	VFAINT
Observation mode	POINTING	POINTING
[deg] Pointing RA	65.973818	65.97860115245453
[deg] Pointing Dec	-22.375887	-22.40296047430193
[deg] Pointing Roll	248.436906	248.595439174709
[mm] SIM focus pos	-0.684267	-0.6828225247311905
[mm] SIM defocus	0	0.001444936568705701
[mm] SIM translation stage pos	-190.132523	-190.1425803651734
[mm] SIM translation stage offset	0	0.01005778216563158
[s] Observation start time (MET)	670742795.184000	670741255.8059
Observation start date	2019-04-04T05:25:26	2019-04-04T05:00:55
[s] Observation end time (MET)	670752795.184000	670753711.0941499
Observation end date	2019-04-04T08:12:06	2019-04-04T08:28:31
Read mode	TIMED	TIMED

Parameter	Planned	Actual
Obspar format version number	7	7
Obspar file type	PREDICTED	ACTUAL
Obspar update status	NONE	UPDATED
Number of optional ACIS chips dropped	0	0
On-chip summing requested	N	N
Subarray requested	CUSTOM	1/4
Subarray start row	385	385
Subarray row count	256	256
Alternating exposures requested	N	N
[s] Primary exposure time	0.000000	0.9

2.3 Aspect



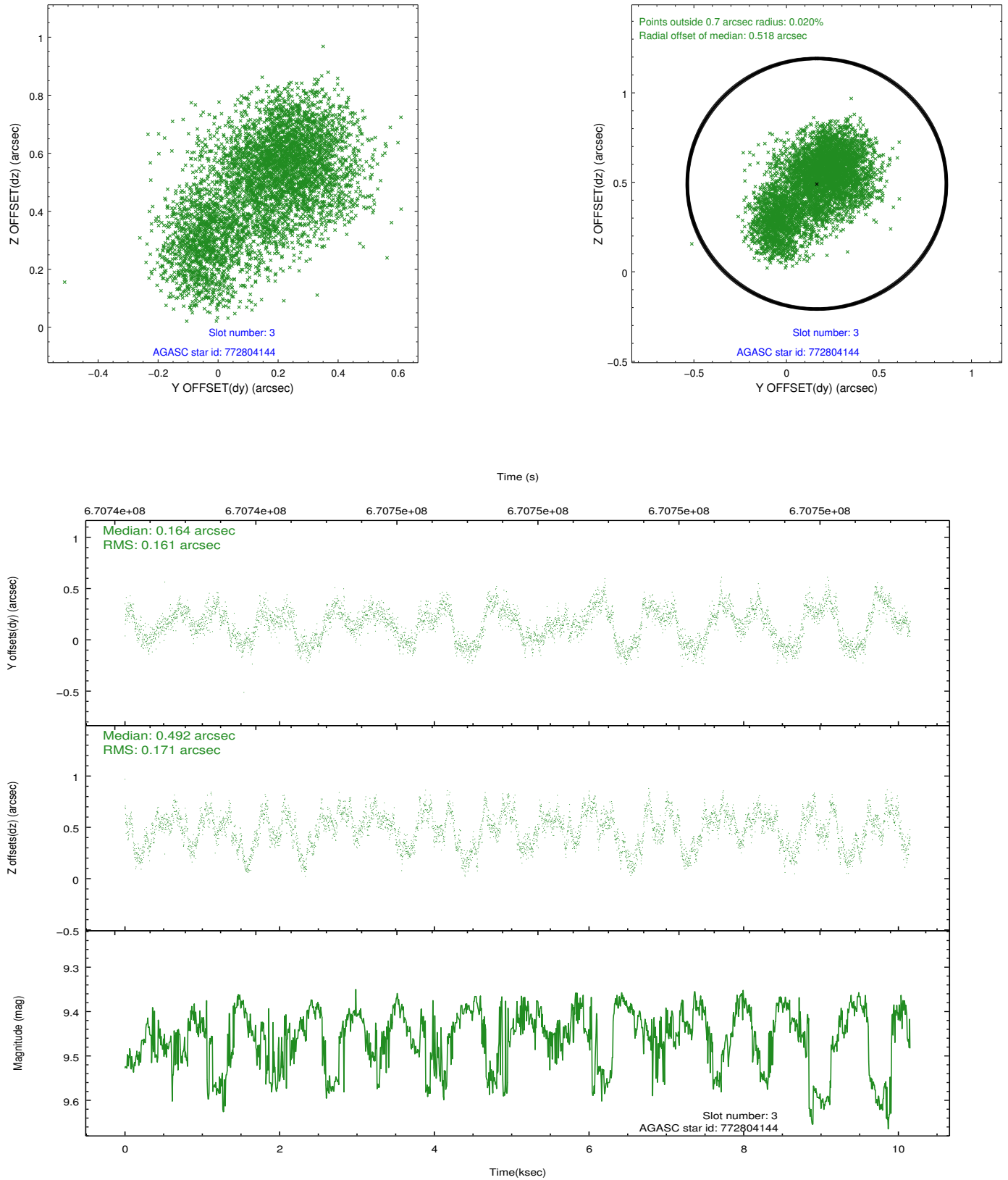


Slot Statistics

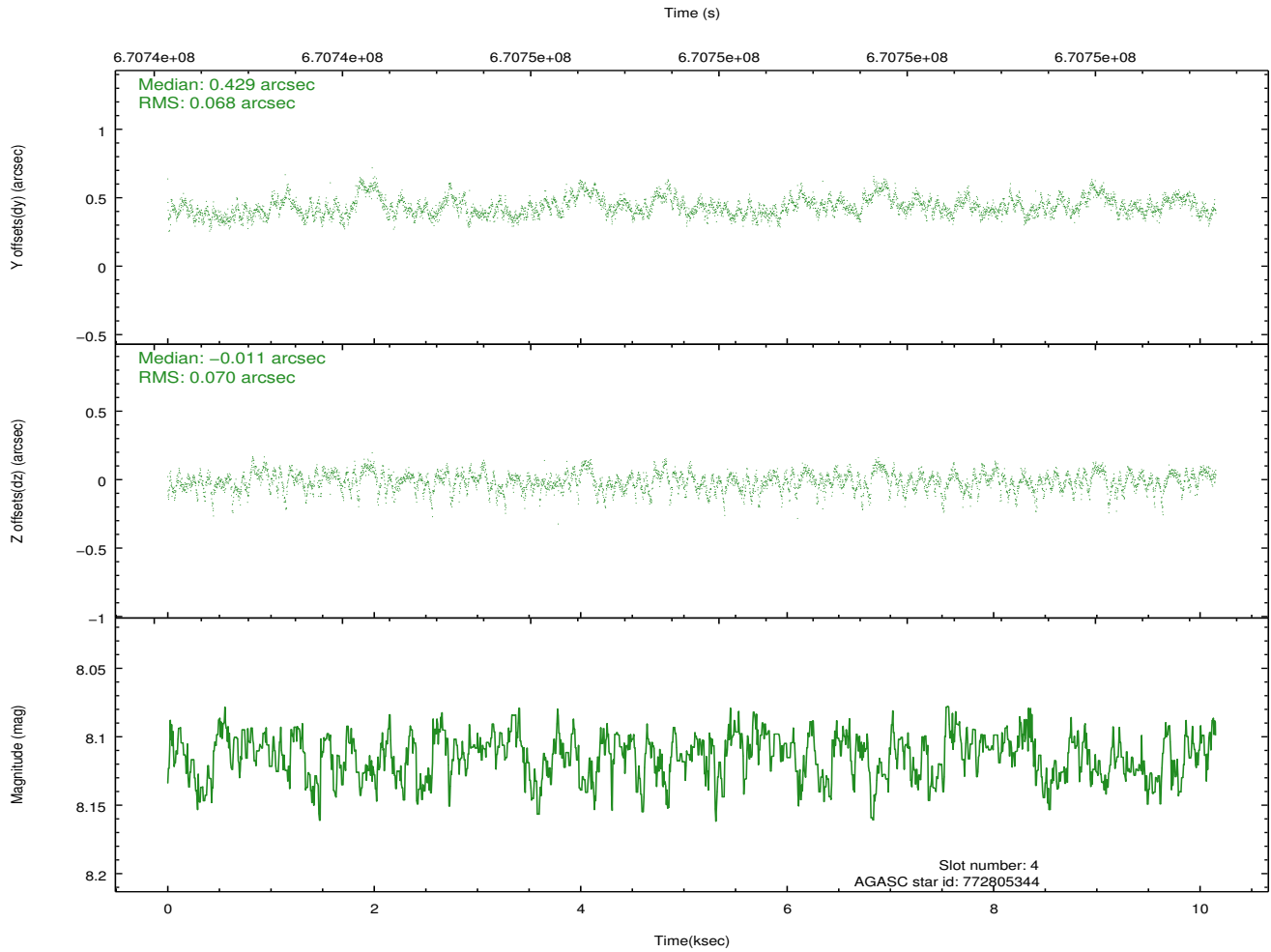
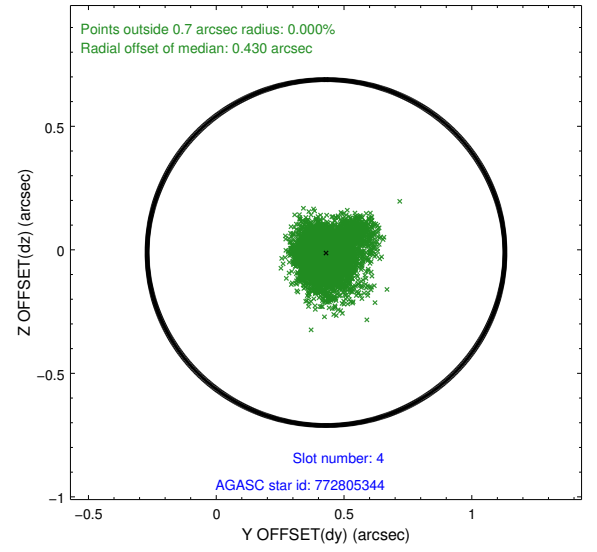
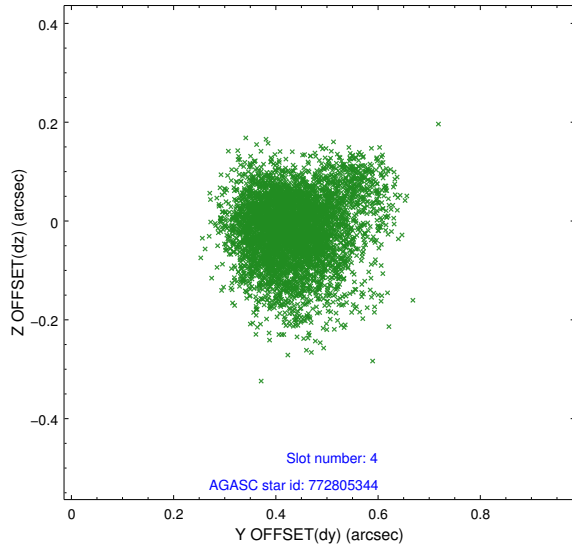
pt	status	used	id	mag	n_pts	frac_pts	med_dy	med_dz	dr1	dr2	ra	dec	mean_y	mea
0	FID		ACIS-S-2	7.00	2477	1.000	-0.410	-0.276	0.006	0.010	0.000000	0.000000	-766.18	-1742
1	FID		ACIS-S-4	7.13	2477	1.000	0.435	0.242	0.007	0.011	0.000000	0.000000	2147.75	165
2	FID		ACIS-S-6	7.26	2477	1.000	-0.053	0.041	0.007	0.012	0.000000	0.000000	396.89	803
3	GUIDE	used	772804144	9.45	4943	1.000	0.164	0.492	0.258	0.401	66.106441	-21.738118	-2297.39	-430
4	GUIDE	used	772805344	8.11	4951	1.000	0.429	-0.011	0.101	0.176	65.775684	-22.120427	-611.43	-952
5	GUIDE	used	846349976	9.45	4944	1.000	-0.693	-0.525	0.174	0.264	66.485448	-22.669584	361.66	1970
6	GUIDE	used	846350240	8.81	4953	1.000	-0.236	-0.266	0.135	0.213	65.927004	-22.977737	2072.97	653
7	GUIDE	used	772802488	9.28	4949	1.000	0.358	0.320	0.154	0.242	65.789076	-21.614358	-2320.93	-1581

2.4 Star Slots

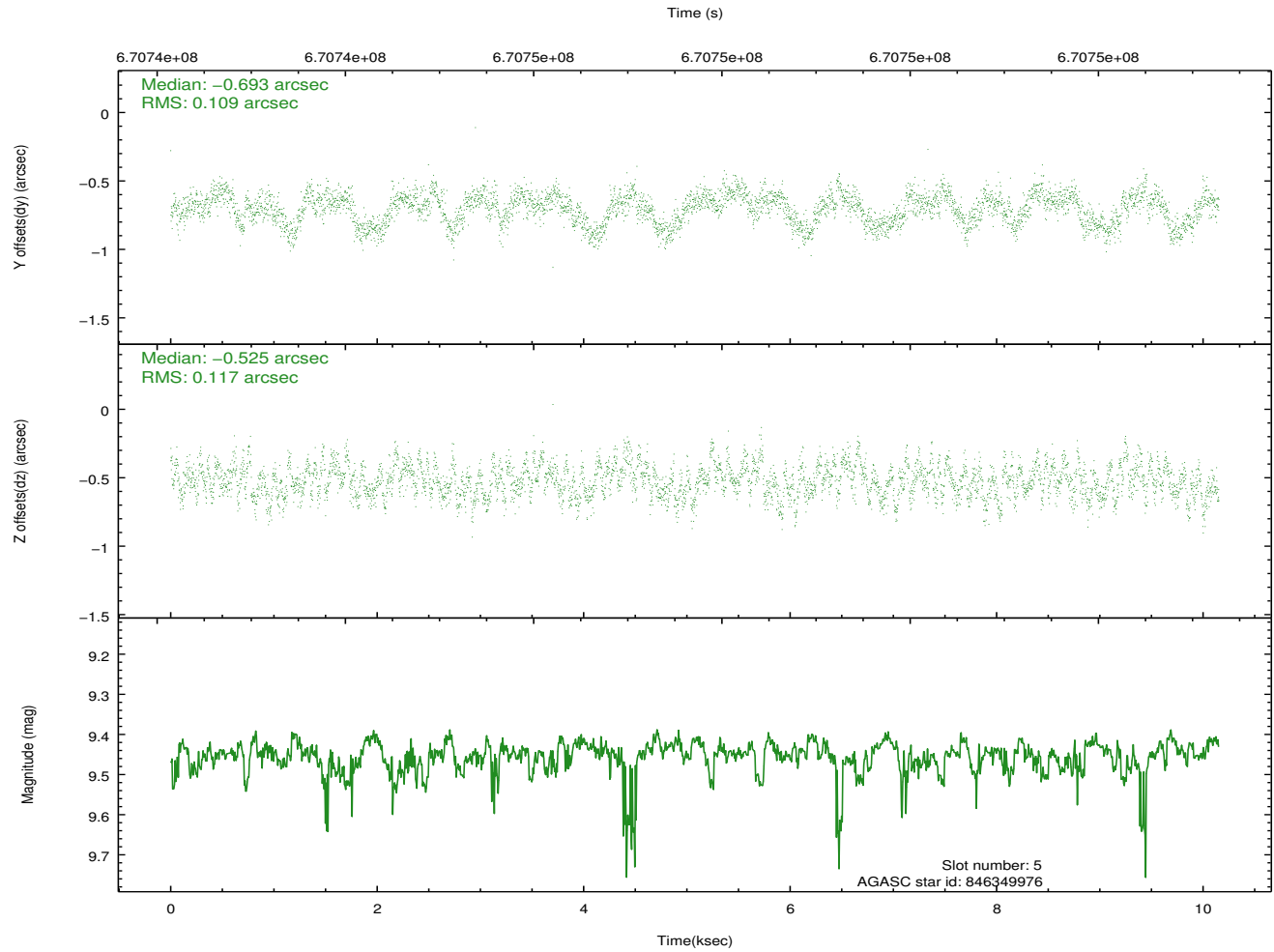
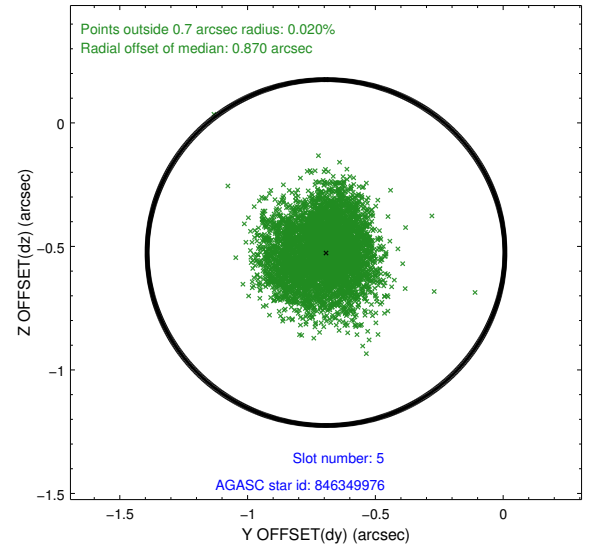
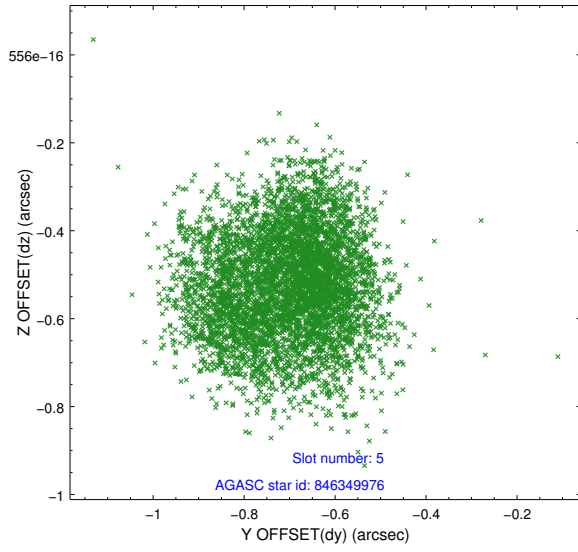
2.4.1 Slot 3



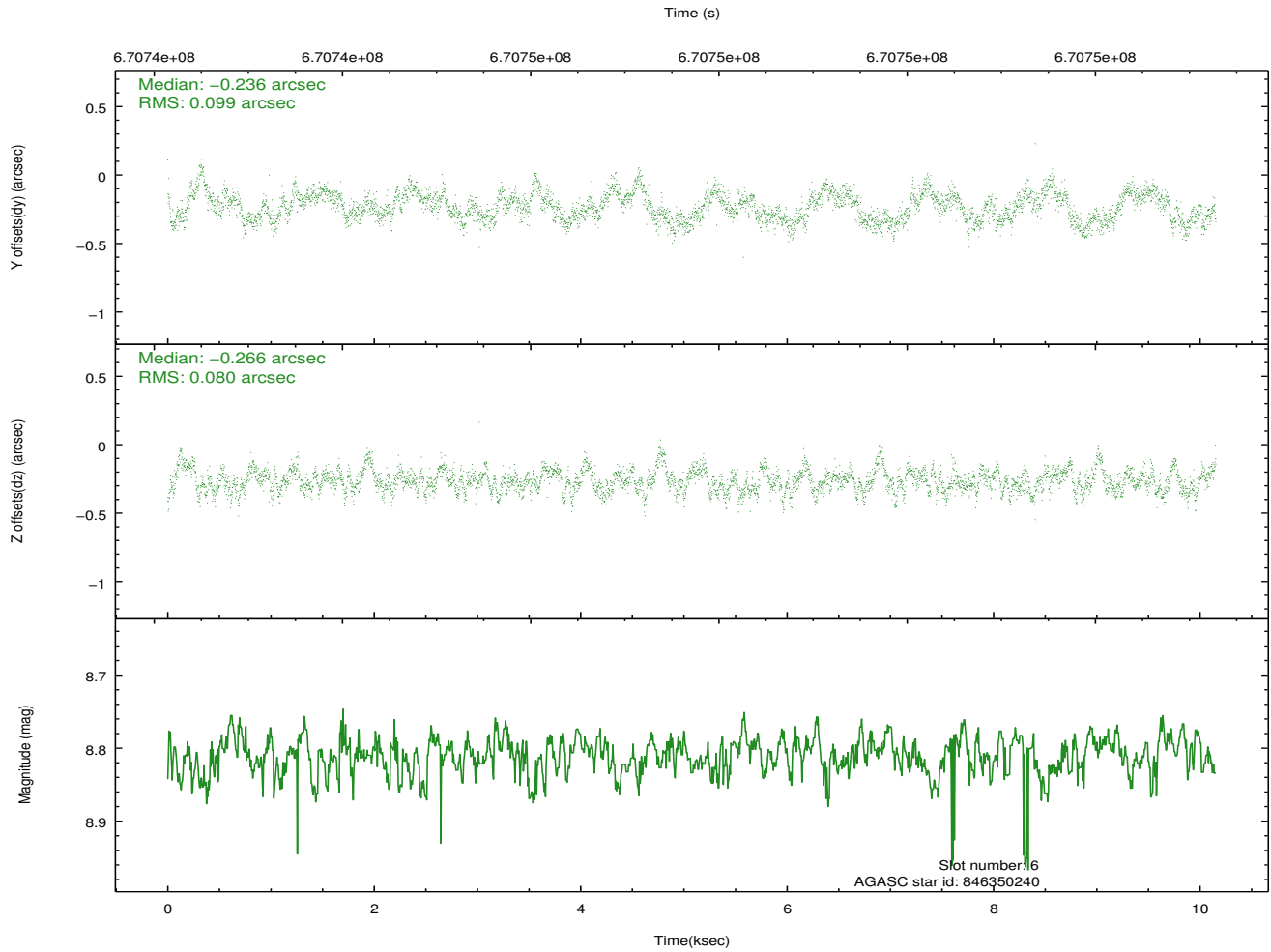
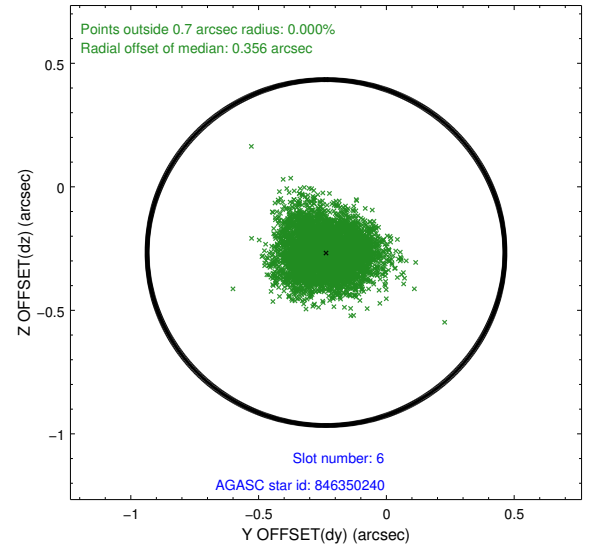
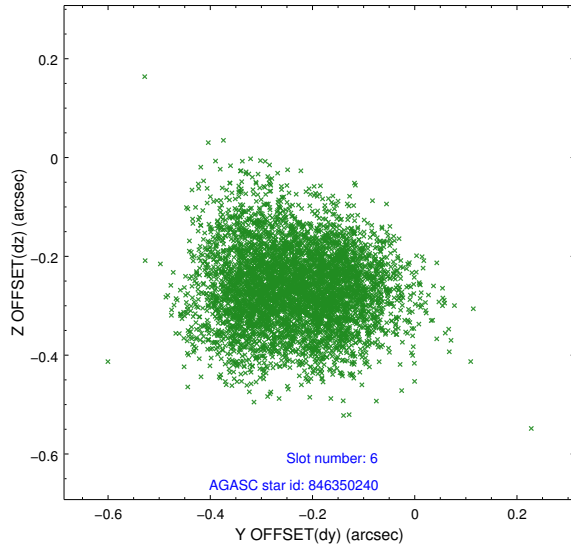
2.4.2 Slot 4



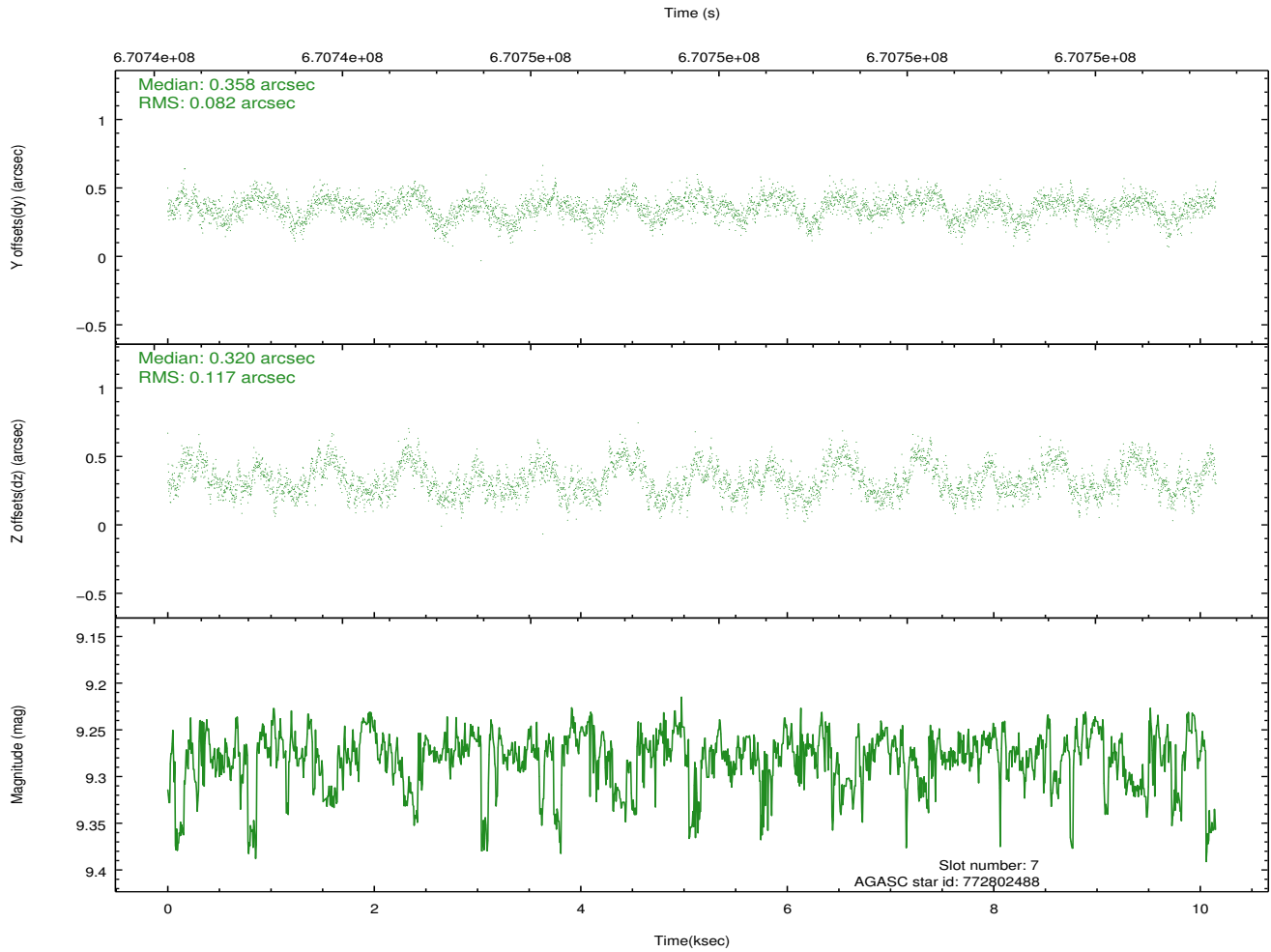
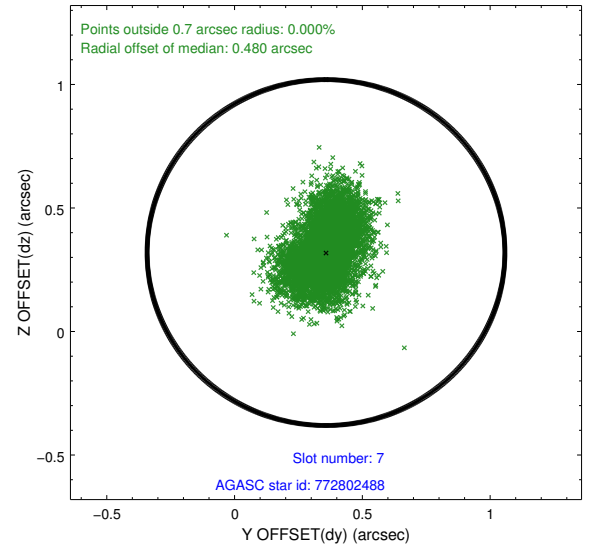
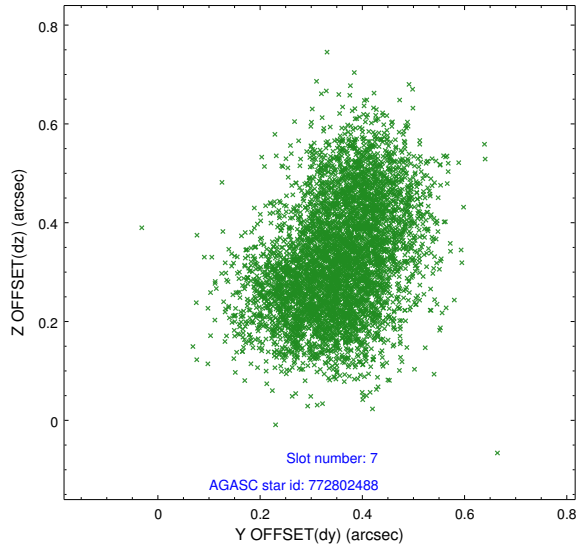
2.4.3 Slot 5



2.4.4 Slot 6

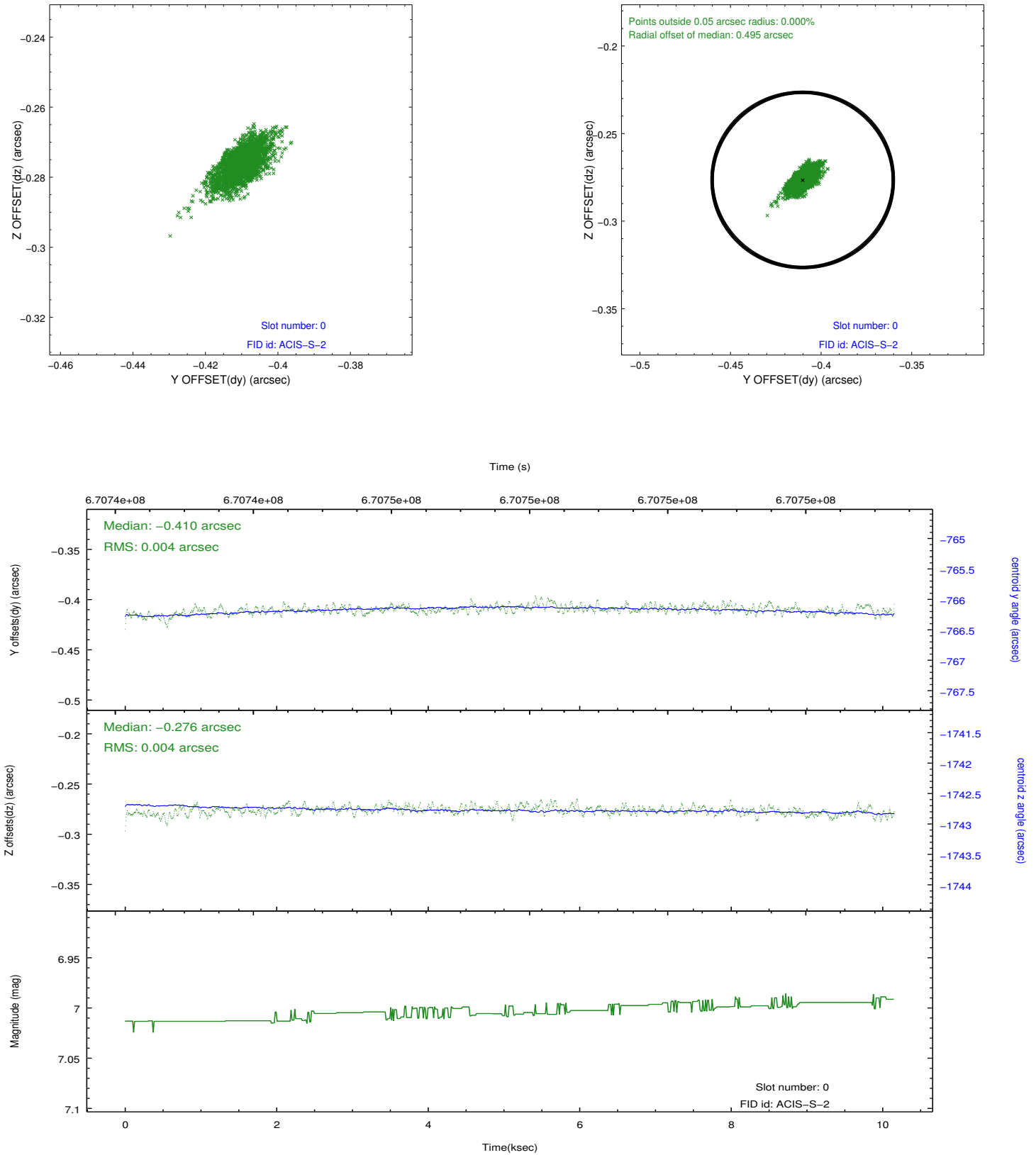


2.4.5 Slot 7

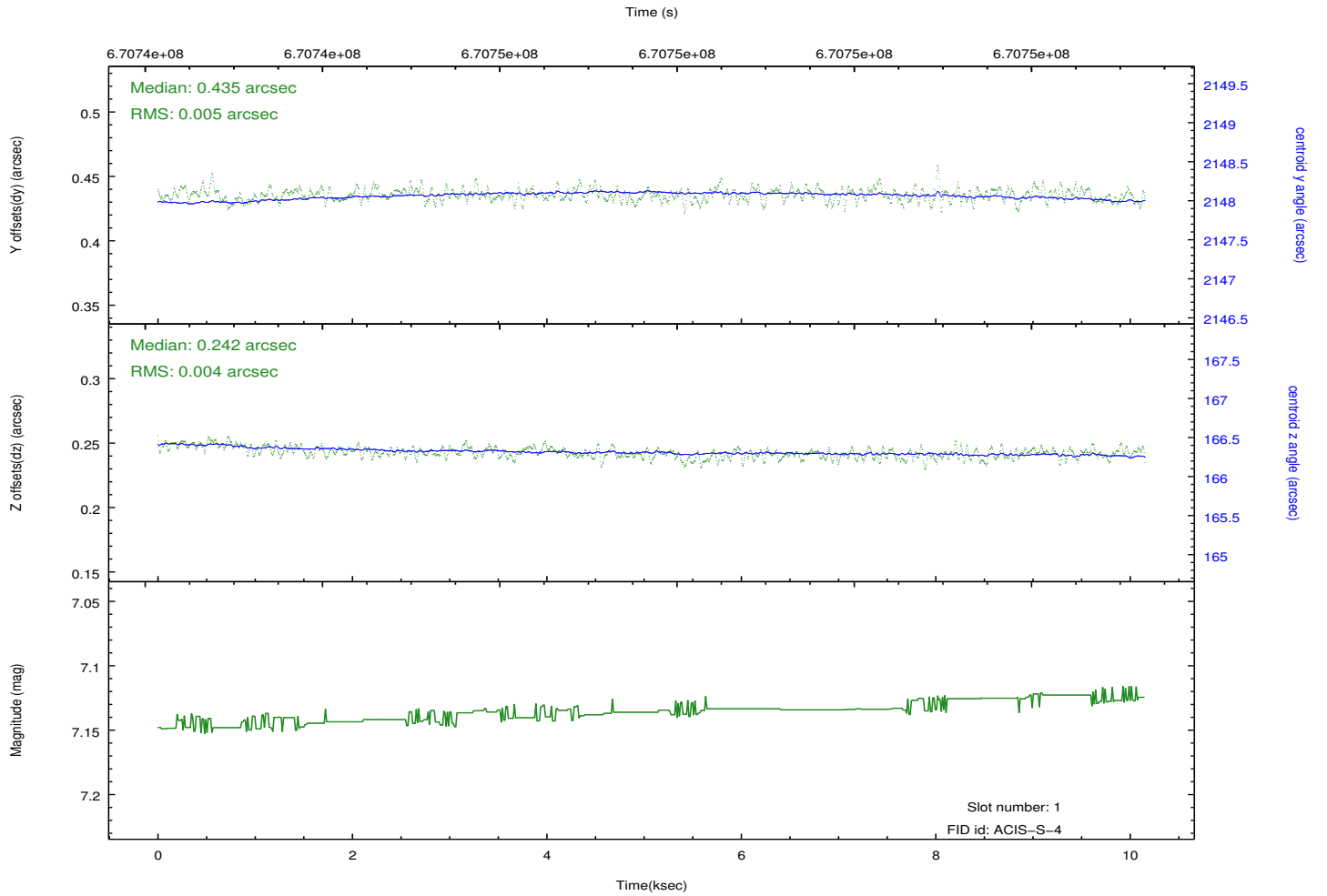
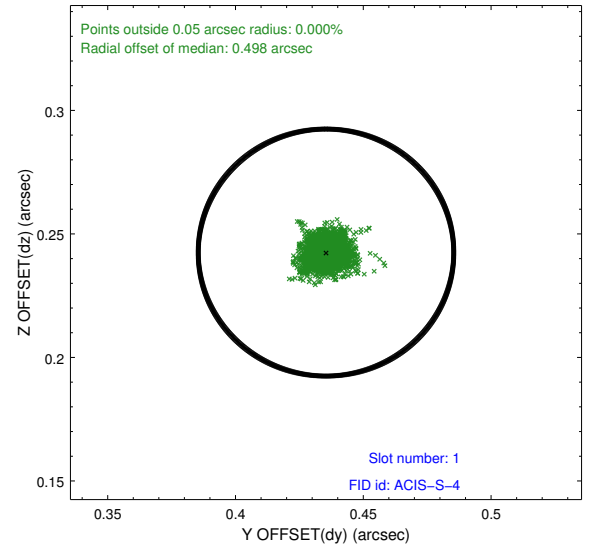
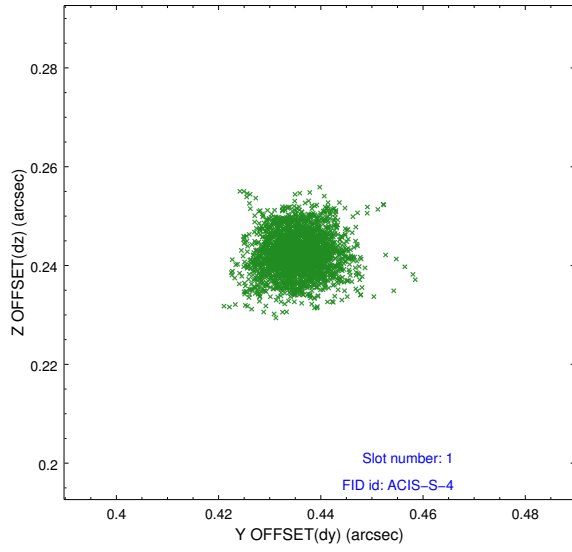


2.5 FID Slots

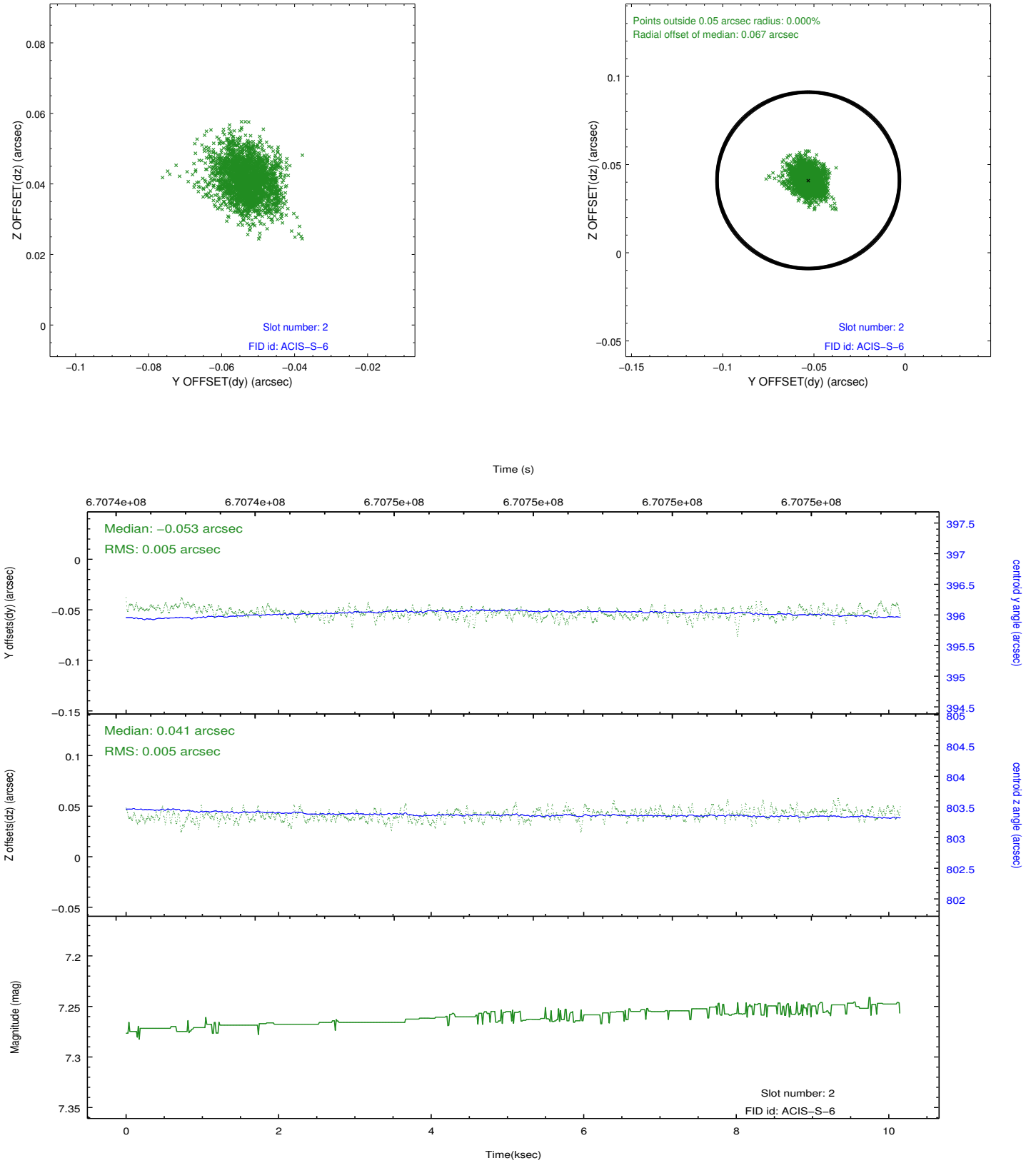
2.5.1 Slot 0



2.5.2 Slot 1



2.5.3 Slot 2



A Summary

A.1 Status

V&V Scientist	Jen Lauer
V&V Date (YYYY-MM-DD)	2019.04.04
V&V Edition	1
V&V Disposition and Status	OK
V&V Charge Time	10.103972287655

A.2 Comments

Roll preference met.