

V&V Reference Report

L2 ASCDS Version : 10.7.1

Observation 21408 - L2 Version 1
Chandra X-Ray Center

L2 Processing Date : Mar 29 2019

Contents

1	Front	2
2	OBI	3
2.1	OBI	3
2.1.1	Images	3
2.1.2	Bias	3
2.1.3	Parameters	4
2.1.4	Events	4
2.2	Compared Parameters	5
2.3	Aspect	6
2.4	Star Slots	9
2.4.1	Slot 3	9
2.4.2	Slot 4	10
2.4.3	Slot 5	11
2.4.4	Slot 6	12
2.4.5	Slot 7	13
2.5	FID Slots	14
2.5.1	Slot 0	14
2.5.2	Slot 1	15
2.5.3	Slot 2	16
A	Summary	17
A.1	Status	17
A.2	Comments	17

1 Front

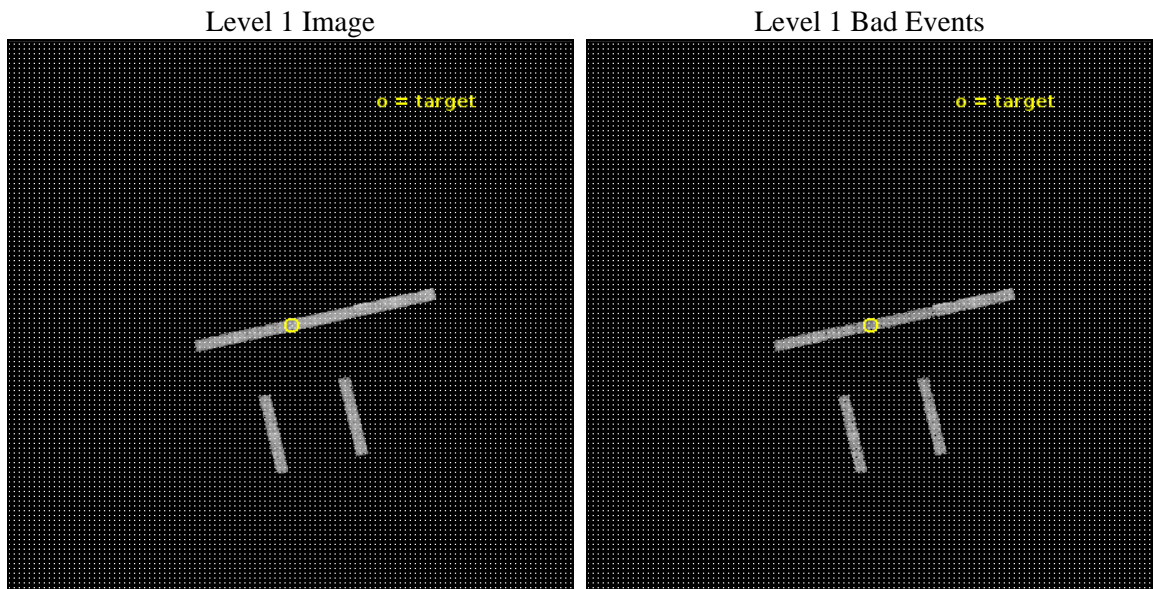
seq_num	703706	Sequence number
obs_id	21408	Observation id
title	Chandra Observations of the Young Gamma-Ray AGN TXS 0128+554	Propo
observer	Matthew Lister	Principal investigator
object	TXS 0128+554	Source name
dtcycle	0	
cycle	P	events from which exps? Prim/Second/Both
ra_targ	22.8075	Observer's specified target RA [deg]
dec_targ	55.753611	Observer's specified target Dec [deg]
ra_nom	22.812112513187	Nominal RA [deg]
dec_nom	55.756684737003	Nominal Dec [deg]
roll_nom	347.15287198106	Nominal Roll [deg]
revision	1	Processing version of data
ontime	6069.7004134655	Sum of GTIs [s]
livetime	5733.5505363082	Livetime [s]
ontime2	6069.7004134655	Sum of GTIs [s]
ontime3	6069.7004134655	Sum of GTIs [s]
ontime6	6069.7004134655	Sum of GTIs [s]
ontime7	6069.7004134655	Sum of GTIs [s]
ontime8	6069.7004134655	Sum of GTIs [s]
l2events	7003	Number of level 2 events



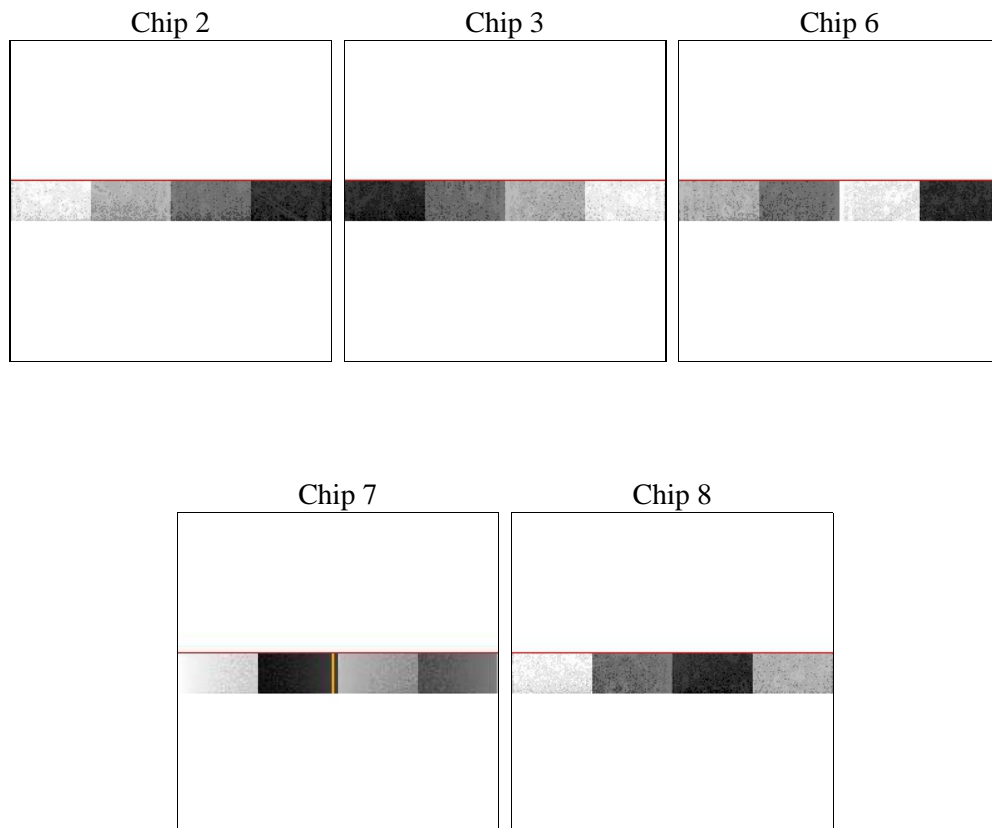
2 OBI

2.1 OBI

2.1.1 Images



2.1.2 Bias



2.1.3 Parameters

obi_num	0	Obi number	sched_exp_time	6000.000000	[s] Scheduled observation exposure time
ascdsver	10.7.1	Processing system revision	ontime	6069.7004134655	Sum of GTIs [s]
caldsver	4.8.2	 	ontime2	6069.7004134655	Sum of GTIs [s]
date	2019-03-30T02:55:15	Date and time of file creation	ontime3	6069.7004134655	Sum of GTIs [s]
revision	1	Processing version of data	ontime6	6069.7004134655	Sum of GTIs [s]
			ontime7	6069.7004134655	Sum of GTIs [s]
			ontime8	6069.7004134655	Sum of GTIs [s]
			l1events	39956	Number of level 1 events

2.1.4 Events

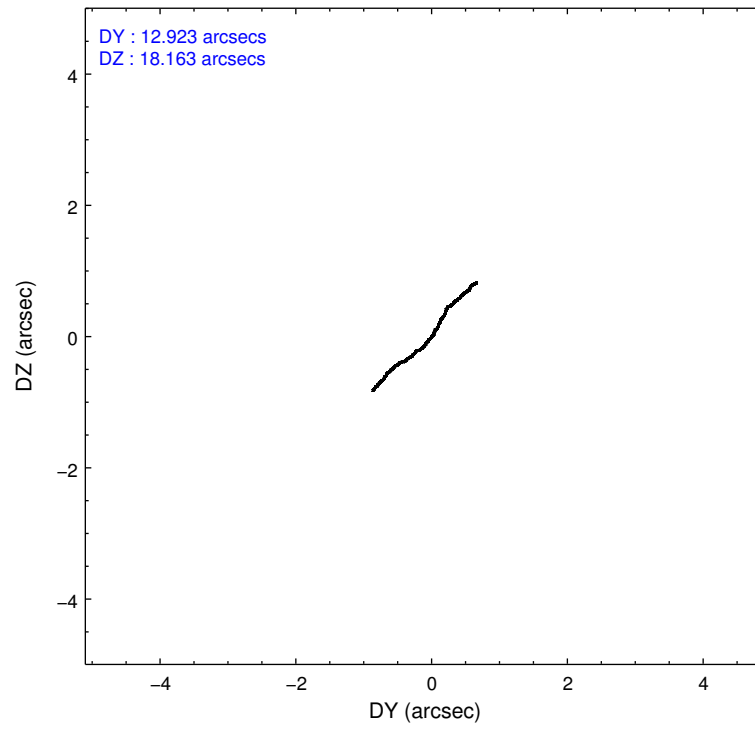
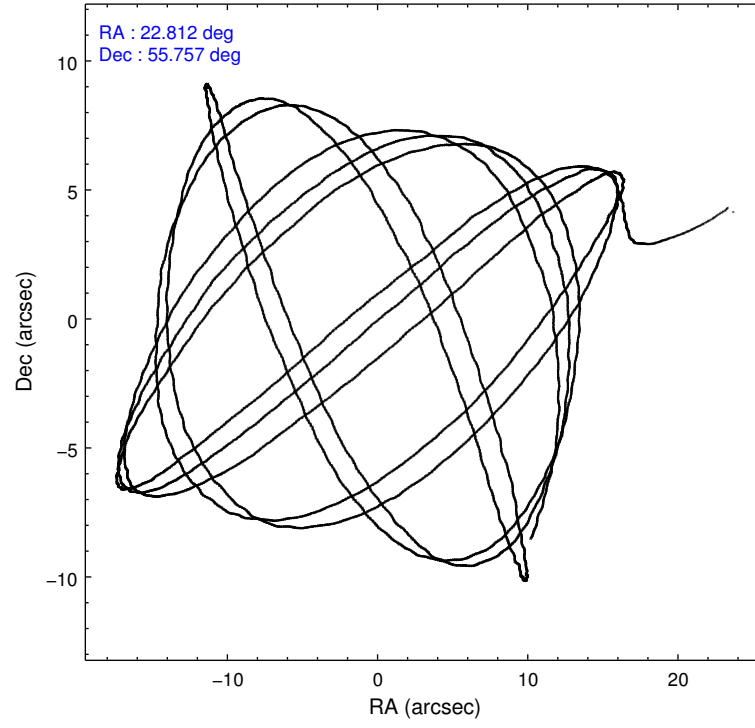
	ccd 2	ccd 3	ccd 6	ccd 7	ccd 8
level 1 events	6707	6558	7247	8774	10670
rejected events	5854	5761	6400	4388	8146
rejected %	87%	87%	88%	50%	76%

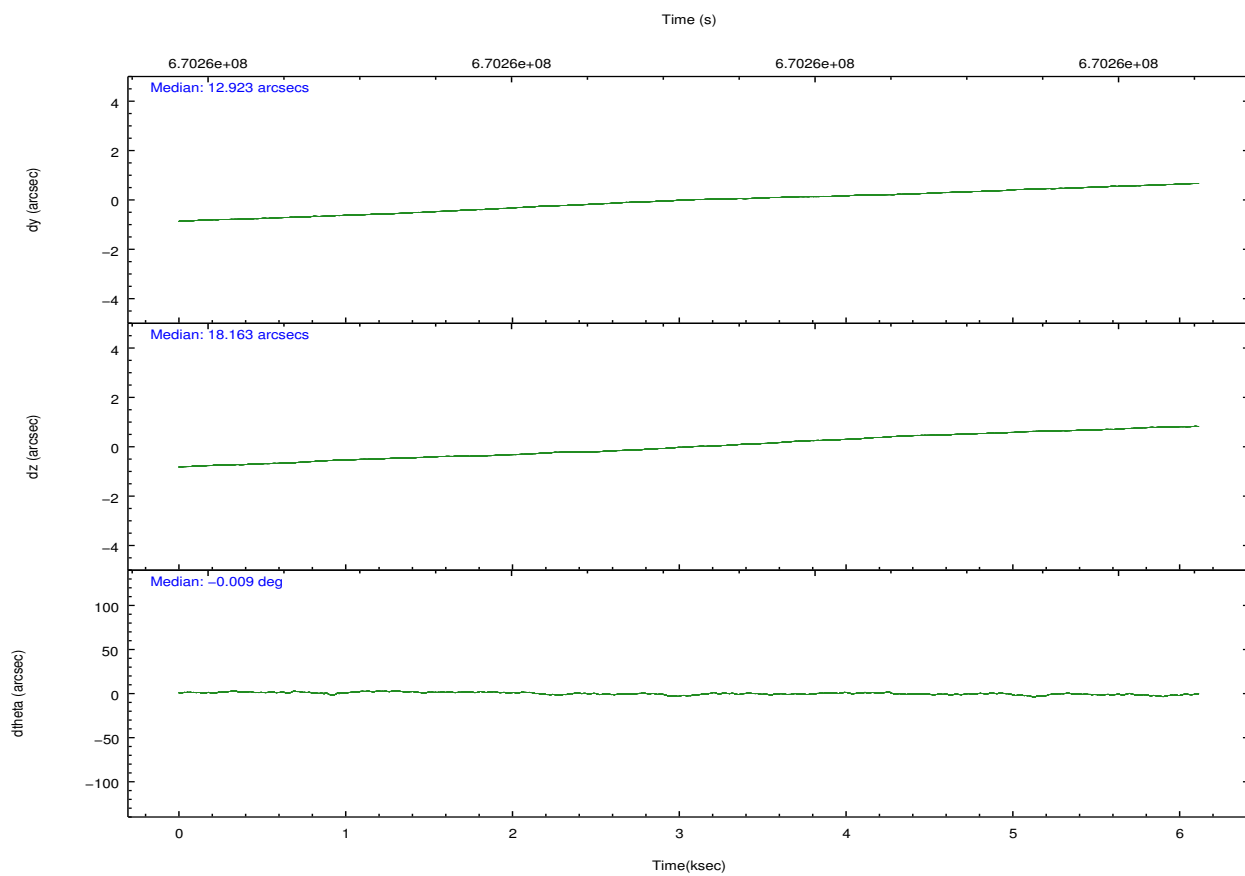
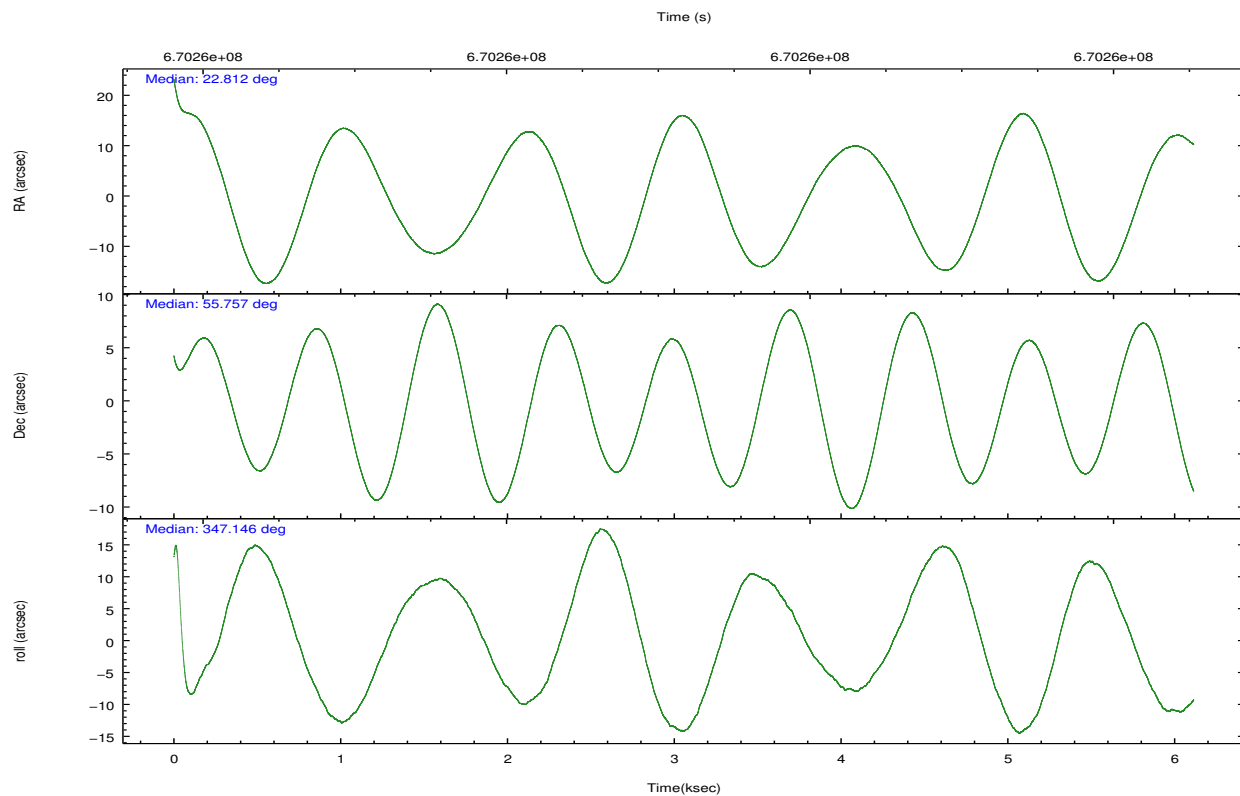
	ccd 2	ccd 3	ccd 6	ccd 7	ccd 8
grade 0 events	284	258	228	515	683
	4%	3%	3%	5%	6%
grade 1 events	3	1	1	13	3
	0%	0%	0%	0%	0%
grade 2 events	174	145	159	1001	508
	2%	2%	2%	11%	4%
grade 3 events	125	132	153	473	293
	1%	2%	2%	5%	2%
grade 4 events	138	118	146	483	302
	2%	1%	2%	5%	2%
grade 5 events	244	297	300	901	454
	3%	4%	4%	10%	4%
grade 6 events	132	144	161	1916	738
	1%	2%	2%	21%	6%
grade 7 events	5607	5463	6099	3472	7689
	83%	83%	84%	39%	72%

2.2 Compared Parameters

Parameter	Planned	Actual	Parameter	Planned	Actual
Instrument	ACIS	ACIS	Obspar format version number	7	7
Detector	ACIS-23678	ACIS-23678	Obspar file type	PREDICTED	ACTUAL
Grating	NONE	NONE	Obspar update status	NONE	UPDATED
Data mode	VFAINT	VFAINT	CCD I0 on	N	N
Observation mode	POINTING	POINTING	CCD I1 on	N	N
[deg] Pointing RA	22.765600	22.81211251318712	CCD I2 on	O1	Y
[deg] Pointing Dec	55.748168	55.7566847370028	CCD I3 on	O2	Y
[deg] Pointing Roll	347.034639	347.1528719810598	CCD S0 on	N	N
[mm] SIM focus pos	-0.684267	-0.6828225247311905	CCD S1 on	N	N
[mm] SIM defocus	0	0.001444936568705701	CCD S2 on	Y	Y
[mm] SIM translation stage pos	-190.132523	-190.1400660498719	CCD S3 on	Y	Y
[mm] SIM translation stage offset	0	0.00754346686406393	CCD S4 on	Y	Y
[s] Observation start time (MET)	670256233.184000	670254754.38929	CCD S5 on	N	N
Observation start date	2019-03-29T14:16:04	2019-03-29T13:52:34	Number of optional ACIS chips dropped	0	0
[s] Observation end time (MET)	670262233.184000	670263315.70231	On-chip summing requested	N	N
Observation end date	2019-03-29T15:56:04	2019-03-29T16:15:15	Subarray requested	CUSTOM	1/8
Read mode	TIMED	TIMED	Subarray start row	449	449
			Subarray row count	128	128
			Alternating exposures requested	N	N
			[s] Primary exposure time	0.000000	0.7

2.3 Aspect



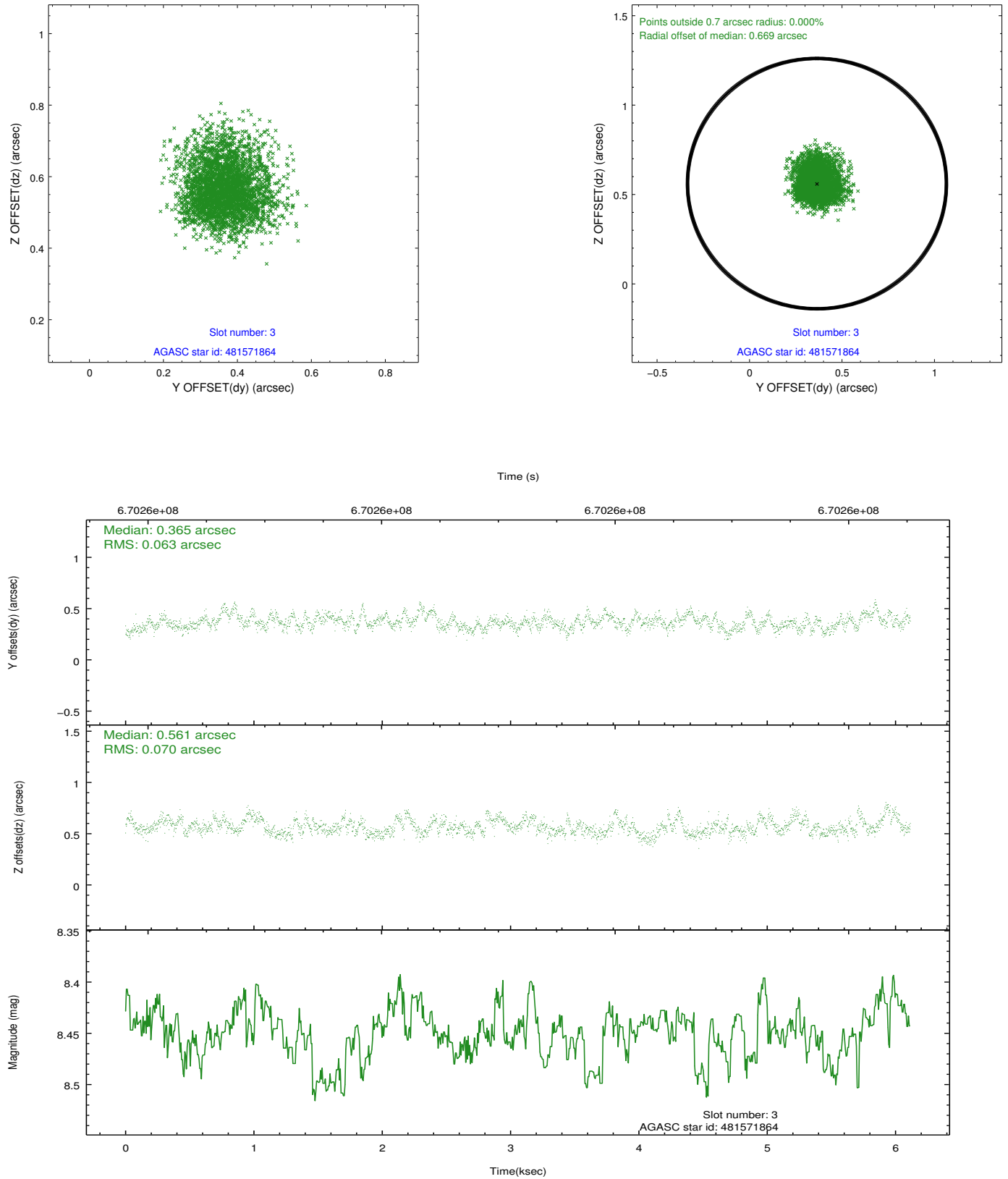


Slot Statistics

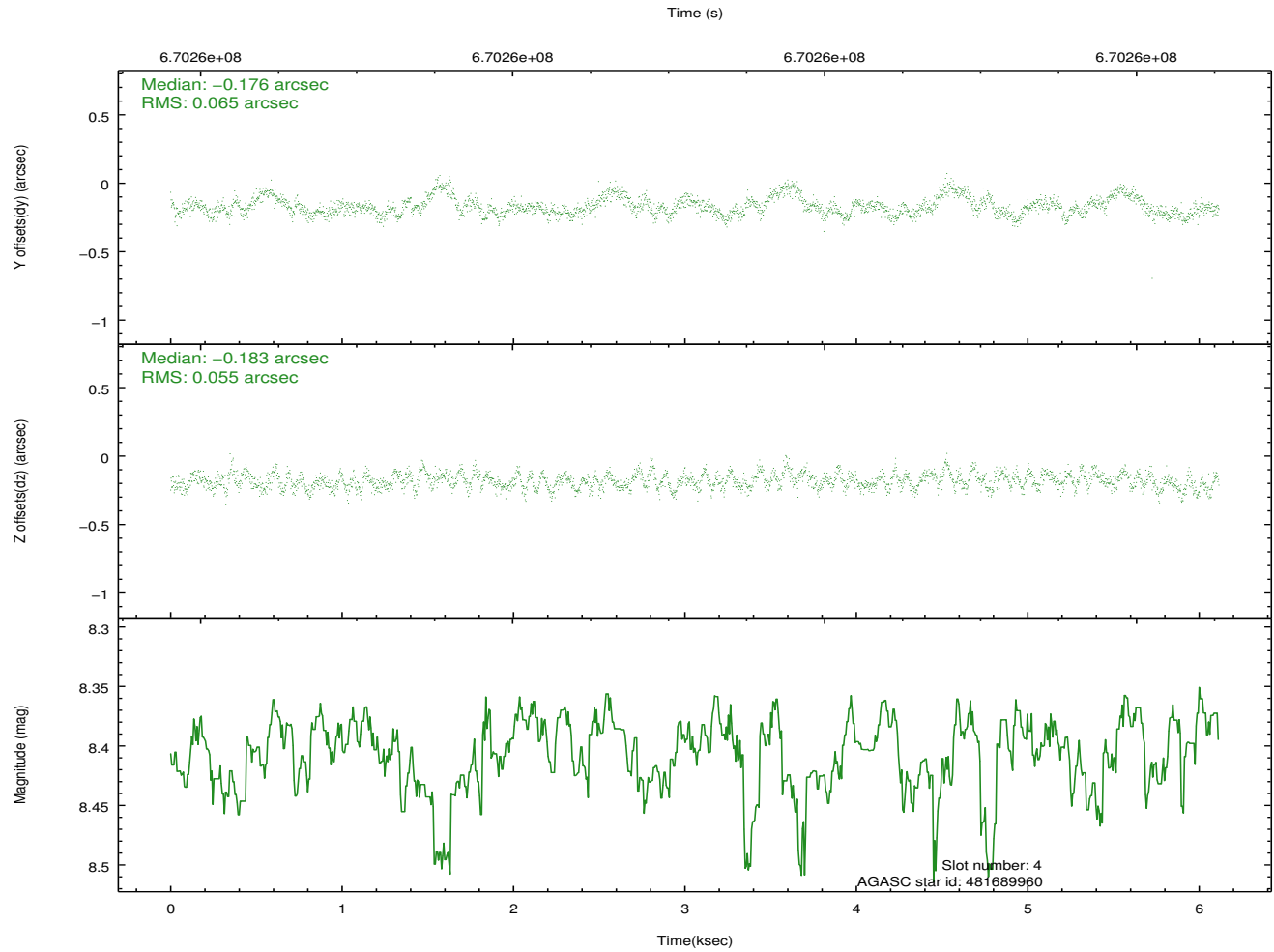
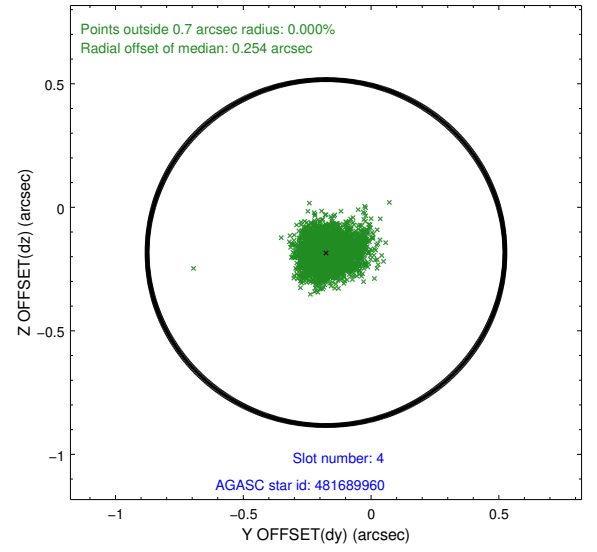
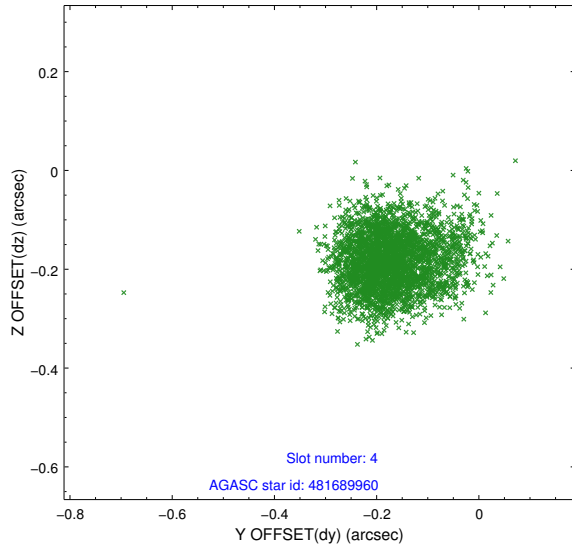
pt	status	used	id	mag	n_pts	frac_pts	med_dy	med_dz	dr1	dr2	ra	dec	mean_y	mea
0	FID		ACIS-S-1	7.11	1492	1.000	0.201	-0.059	0.020	0.034	0.000000	0.000000	930.58	-1735
1	FID		ACIS-S-5	7.11	1492	1.000	-0.481	0.090	0.037	0.065	0.000000	0.000000	-1818.67	161
2	FID		ACIS-S-6	7.26	1492	1.000	0.255	-0.019	0.026	0.040	0.000000	0.000000	394.99	806
3	GUIDE	used	481571864	8.45	2984	1.000	0.365	0.561	0.100	0.164	22.222732	55.278977	-706.13	-1891
4	GUIDE	used	481689960	8.40	2982	1.000	-0.176	-0.183	0.089	0.148	23.818984	56.189894	1695.38	2037
5	GUIDE	used	481698904	6.83	2983	1.000	-0.048	-0.096	0.086	0.141	23.338629	55.817696	1072.62	508
6	GUIDE	used	481709512	8.68	2980	1.000	0.006	-0.093	0.106	0.174	23.411712	55.662405	1346.93	-0
7	GUIDE	used	481691096	7.43	2980	1.000	-0.162	-0.192	0.094	0.162	23.857922	56.043730	1897.82	1546

2.4 Star Slots

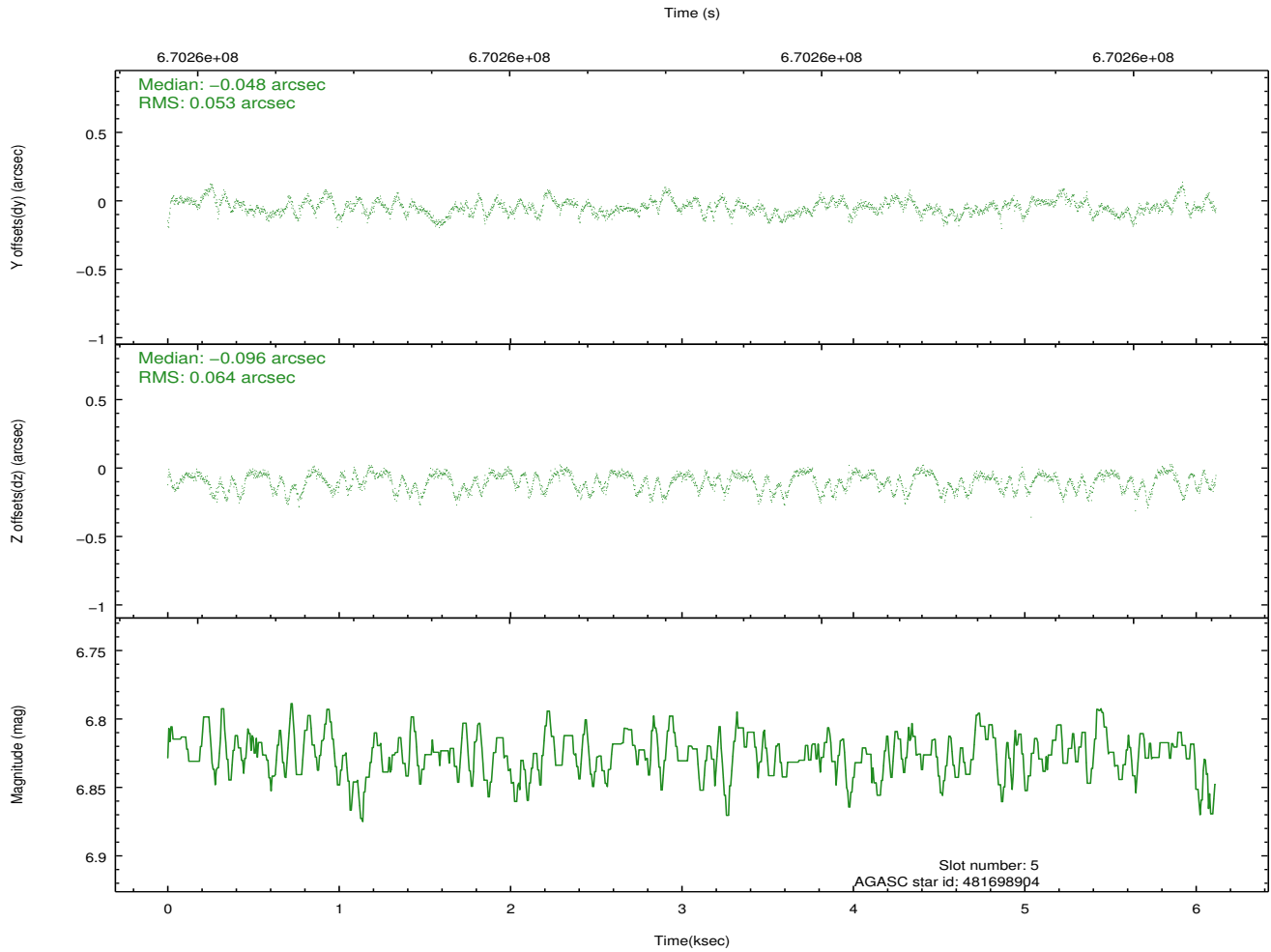
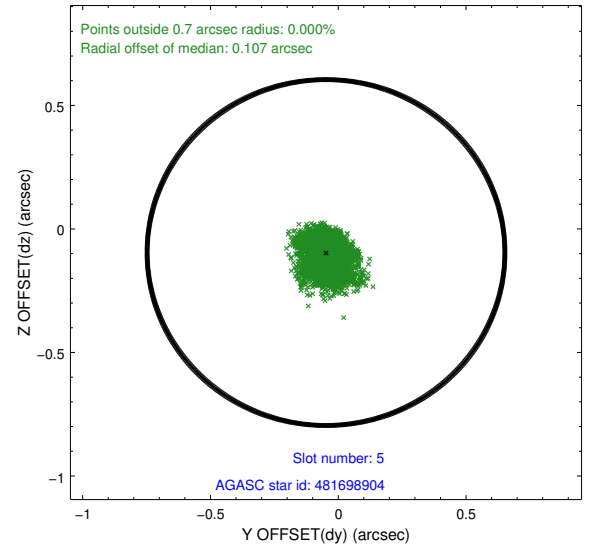
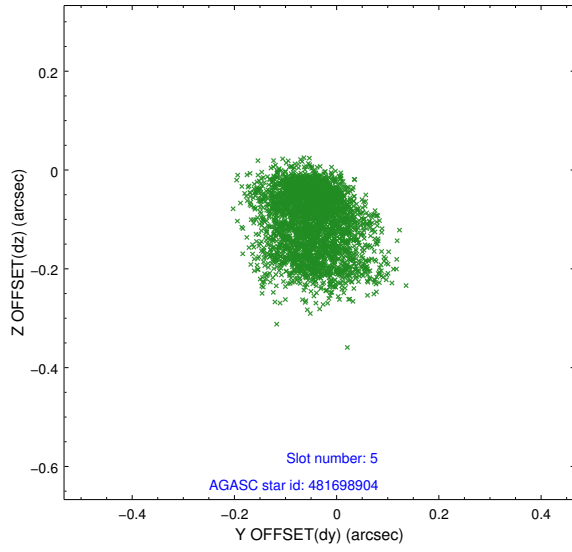
2.4.1 Slot 3



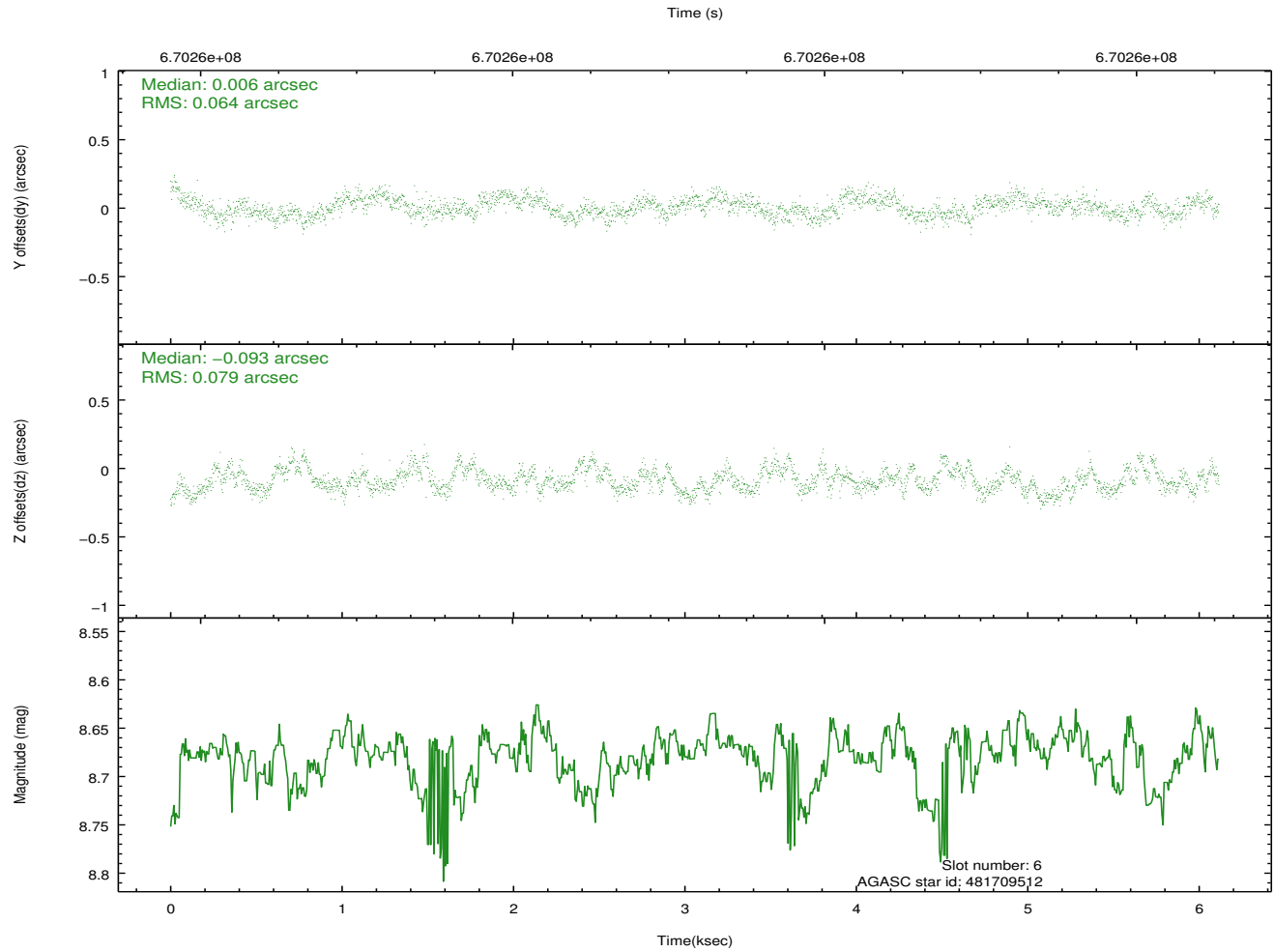
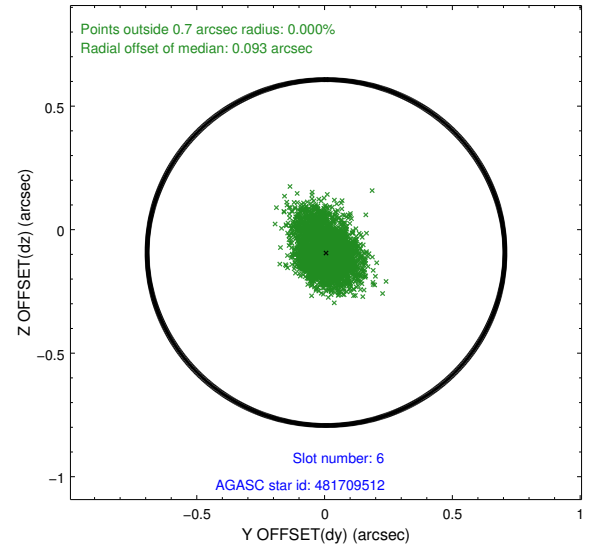
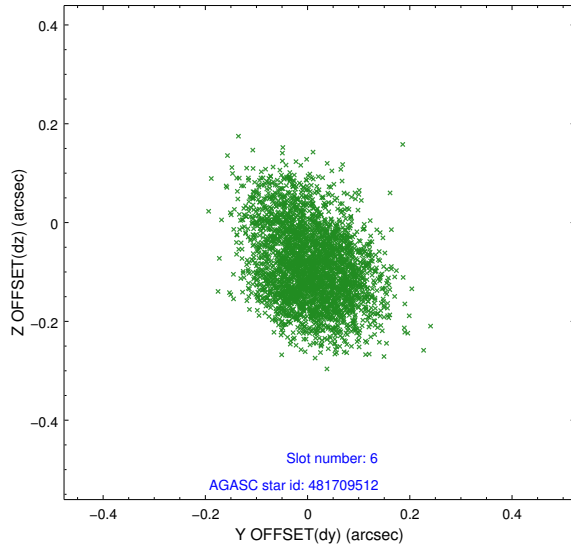
2.4.2 Slot 4



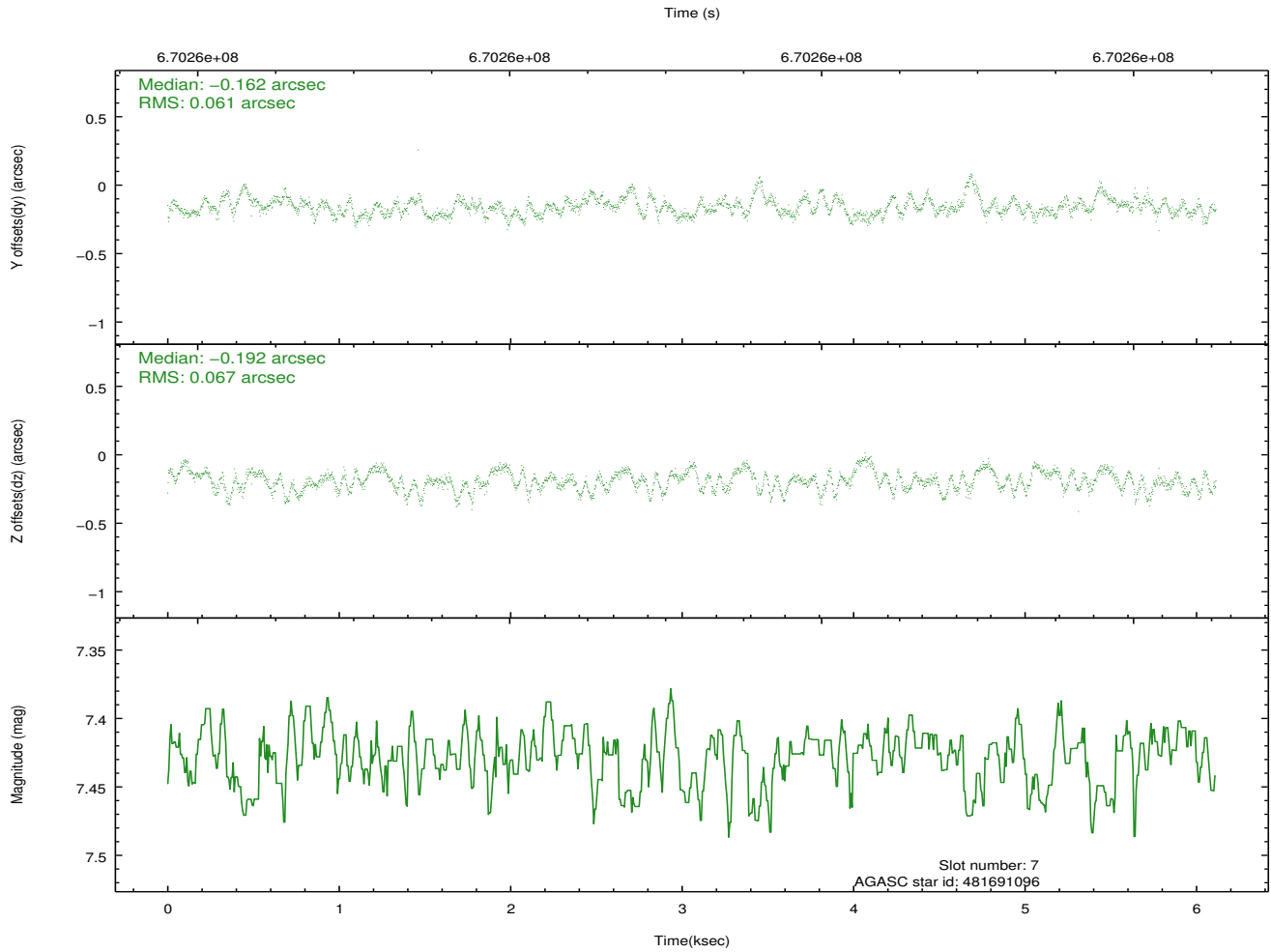
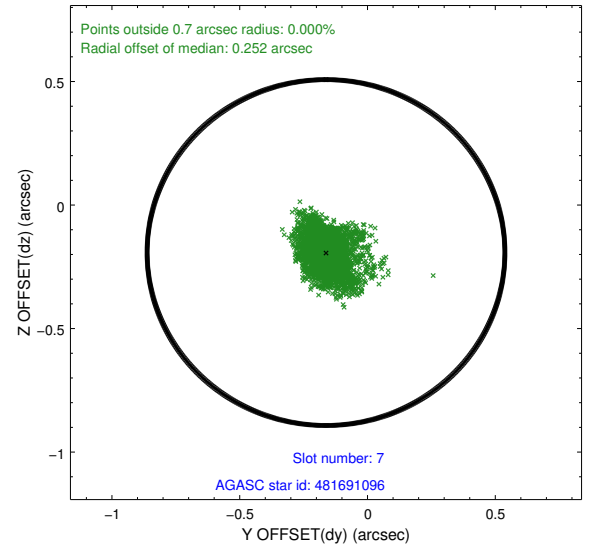
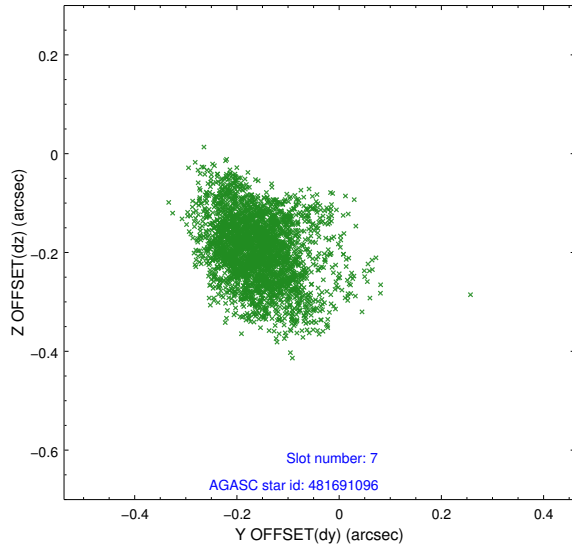
2.4.3 Slot 5



2.4.4 Slot 6

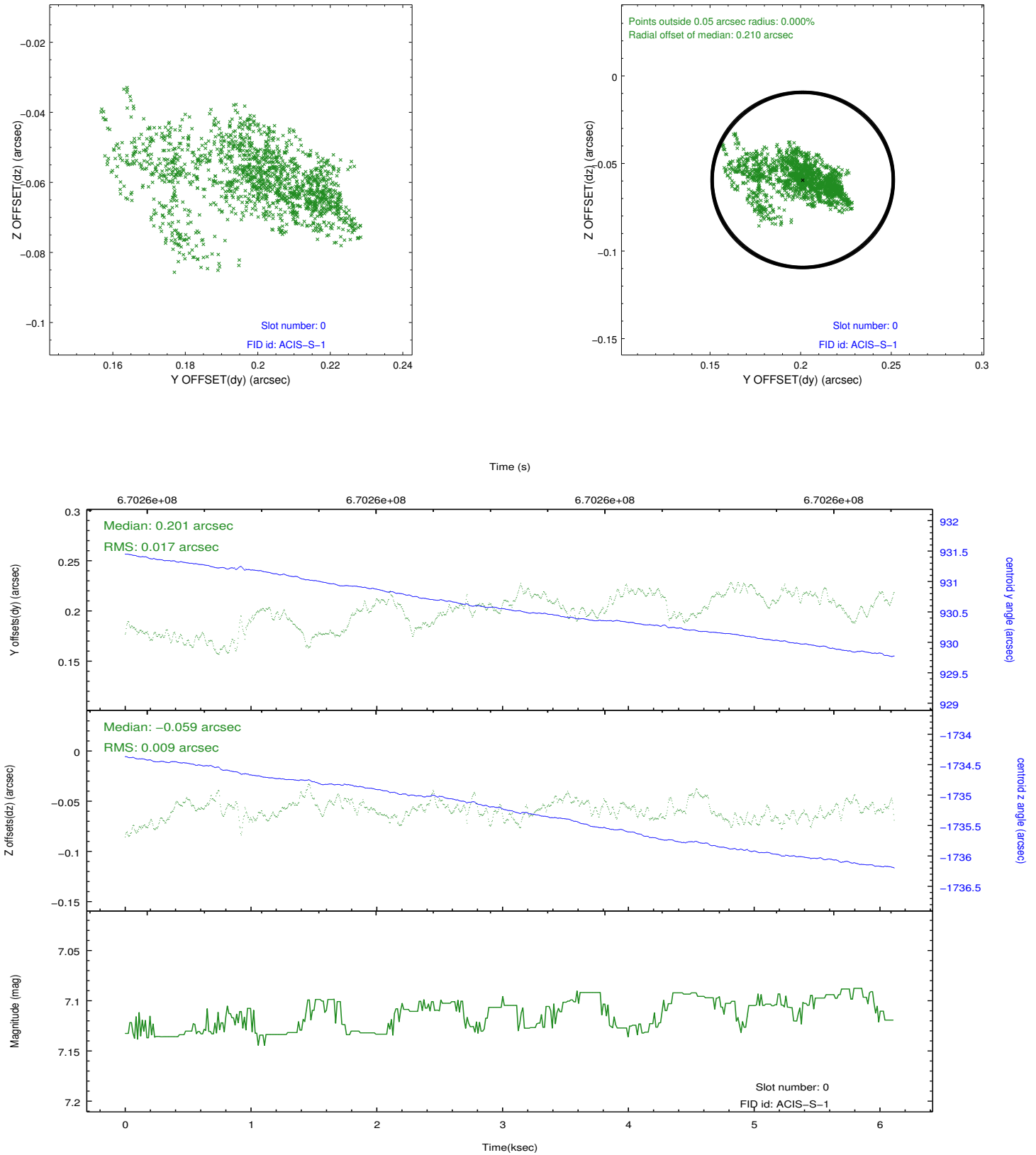


2.4.5 Slot 7

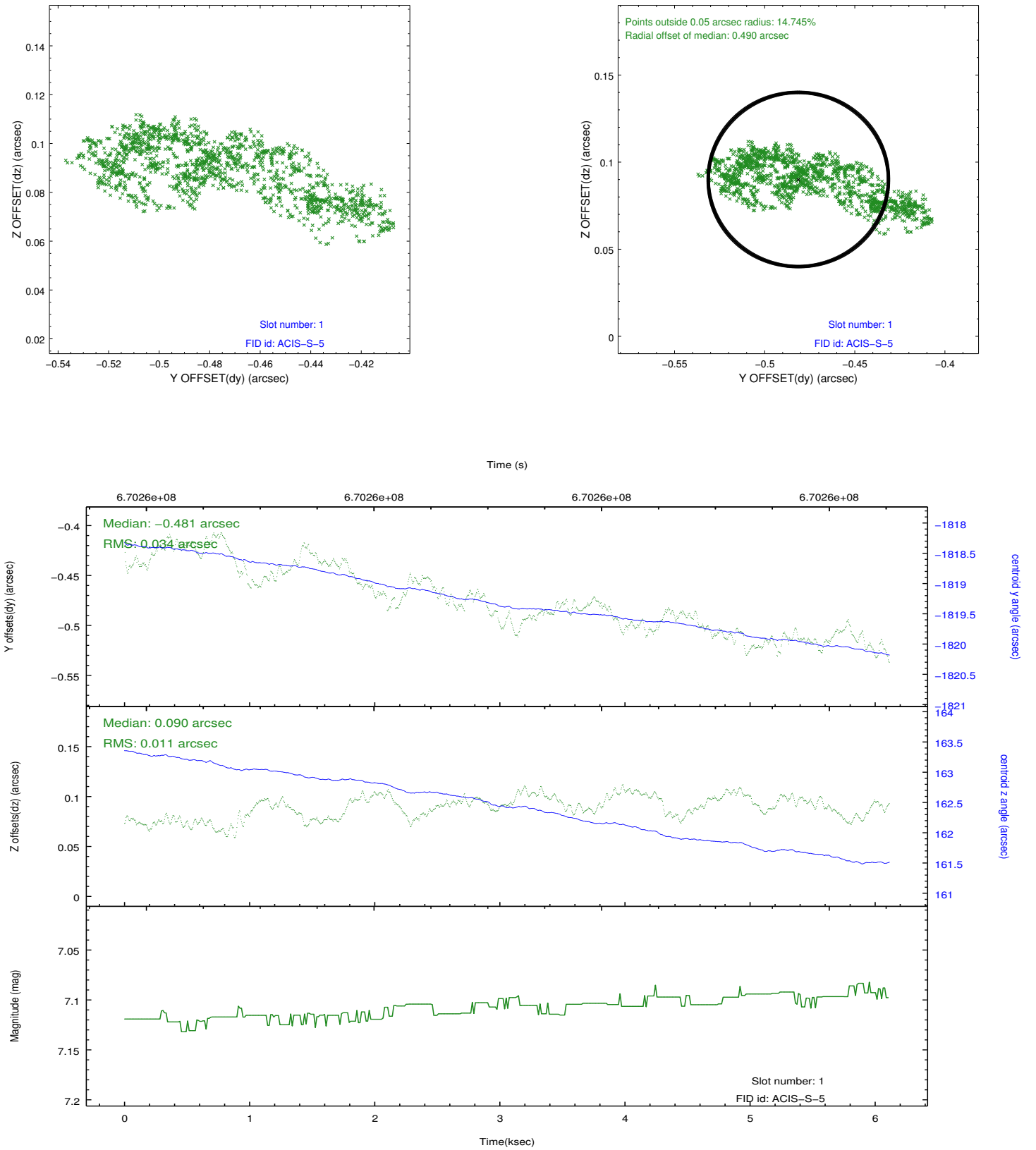


2.5 FID Slots

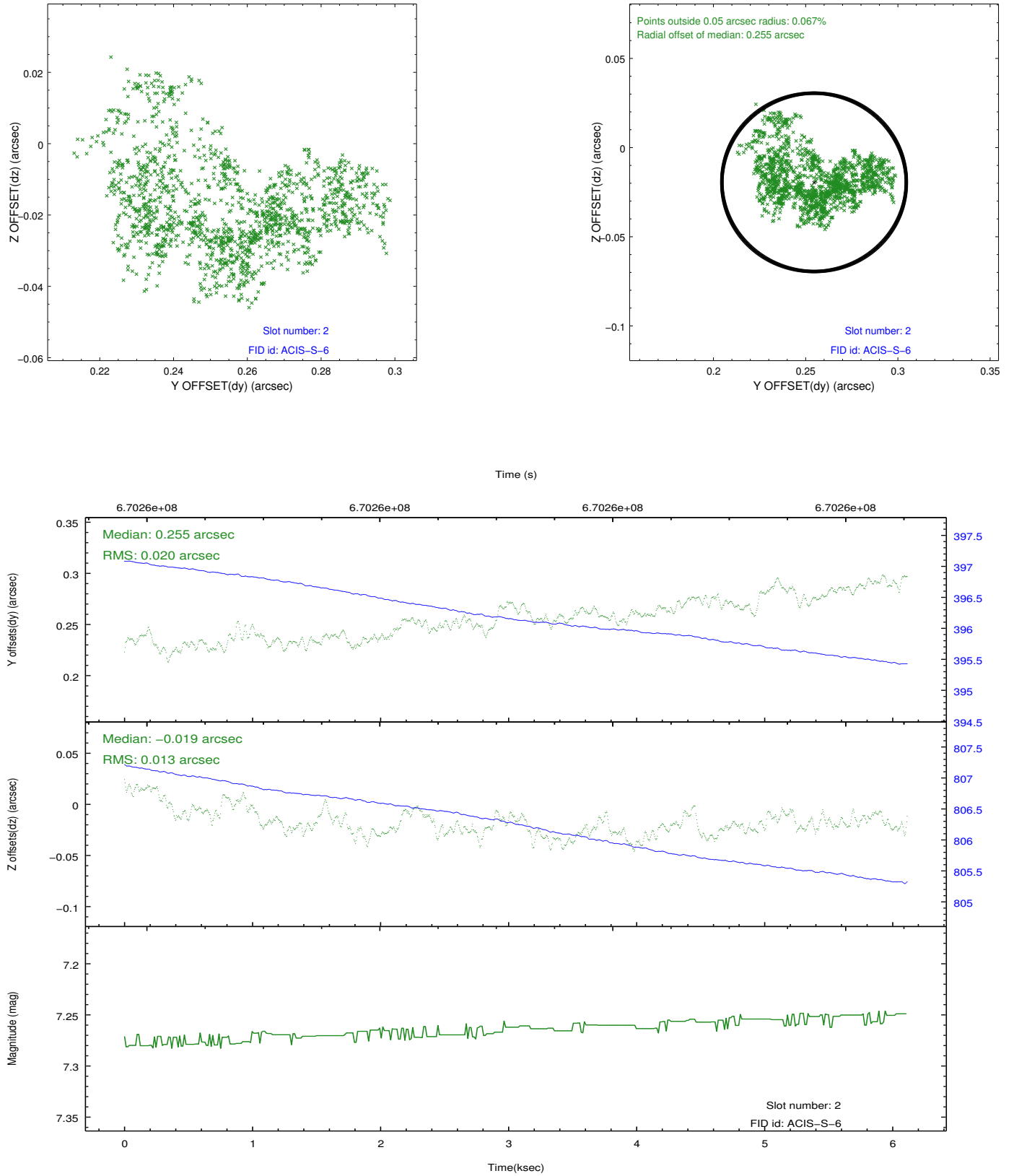
2.5.1 Slot 0



2.5.2 Slot 1



2.5.3 Slot 2



A Summary

A.1 Status

V&V Scientist	Joy Nichols
V&V Date (YYYY-MM-DD)	2019.04.01
V&V Edition	1
V&V Disposition and Status	OK
V&V Charge Time	6.0697004134655

A.2 Comments