

V&V Reference Report

L2 ASCDS Version : 10.7

Observation 21301 - L2 Version 1
Chandra X-Ray Center

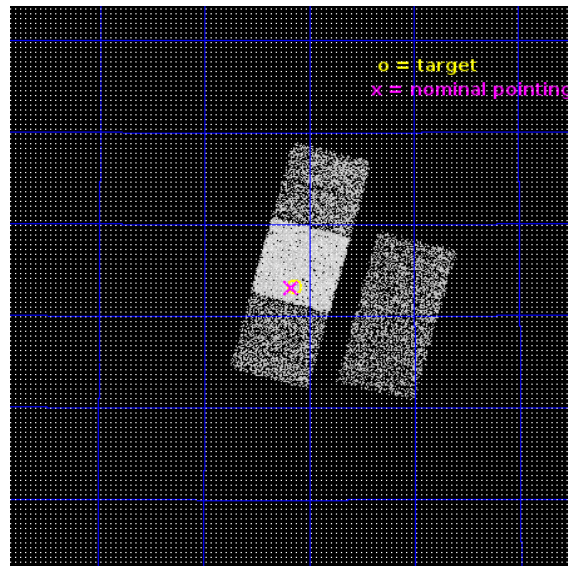
L2 Processing Date : Dec 8 2018

Contents

1	Front	2
2	OBI	3
2.1	OBI	3
2.1.1	Images	3
2.1.2	Bias	3
2.1.3	Parameters	4
2.1.4	Events	4
2.2	Compared Parameters	5
2.3	Aspect	6
2.4	Star Slots	9
2.4.1	Slot 3	9
2.4.2	Slot 4	10
2.4.3	Slot 5	11
2.4.4	Slot 6	12
2.4.5	Slot 7	13
2.5	FID Slots	14
2.5.1	Slot 0	14
2.5.2	Slot 1	15
2.5.3	Slot 2	16
A	Summary	17
A.1	Status	17
A.2	Comments	17

1 Front

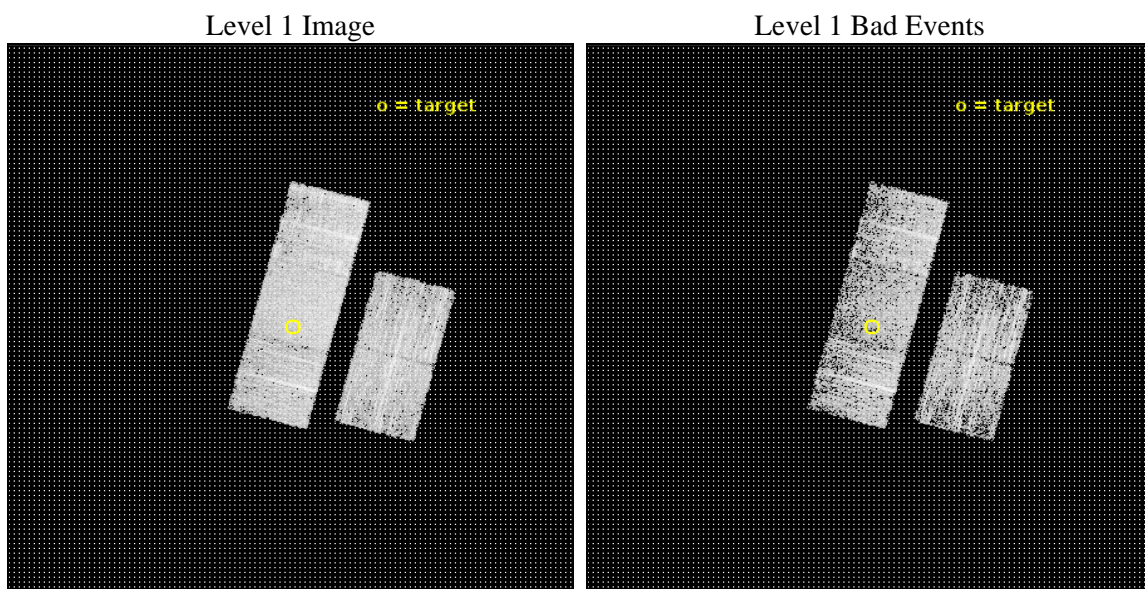
seq_num	503074	Sequence number
obs_id	21301	Observation id
title	Where Have All the Central Compact Objects Gone?	Proposal title
observer	Eric Gotthelf	Principal investigator
object	PSR J2313+4253	Source name
dtcycle	0	
cycle	P	events from which exps? Prim/Second/Both
ra_targ	348.285833	Observer's specified target RA [deg]
dec_targ	42.886944	Observer's specified target Dec [deg]
ra_nom	348.2921379452	Nominal RA [deg]
dec_nom	42.885053573785	Nominal Dec [deg]
roll_nom	285.10619498109	Nominal Roll [deg]
revision	1	Processing version of data
ontime	3552.600027442	Sum of GTIs [s]
livetime	3506.1826926974	Livetime [s]
ontime2	3552.600027442	Sum of GTIs [s]
ontime3	3552.600027442	Sum of GTIs [s]
ontime6	3552.600027442	Sum of GTIs [s]
ontime7	3552.600027442	Sum of GTIs [s]
ontime8	3552.600027442	Sum of GTIs [s]
l2events	25377	Number of level 2 events



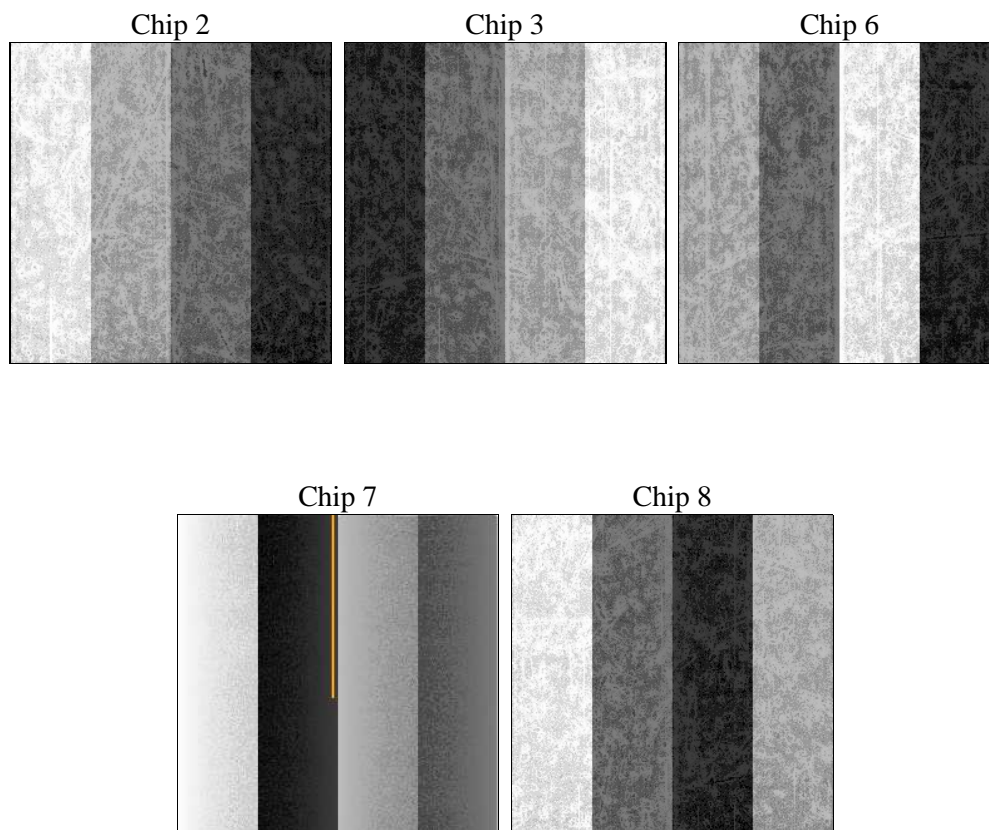
2 OBI

2.1 OBI

2.1.1 Images



2.1.2 Bias



2.1.3 Parameters

obi_num	0	Obi number	sched_exp_time	3500.000000	[s] Scheduled observation exposure time
ascdsver	10.7	Processing system revision	ontime	3552.600027442	Sum of GTIs [s]
caldsver	4.8.0.1	 	ontime2	3552.600027442	Sum of GTIs [s]
date	2018-12-08T17:43:05	Date and time of file creation	ontime3	3552.600027442	Sum of GTIs [s]
revision	1	Processing version of data	ontime6	3552.600027442	Sum of GTIs [s]
			ontime7	3552.600027442	Sum of GTIs [s]
			ontime8	3552.600027442	Sum of GTIs [s]
			l1events	148395	Number of level 1 events

2.1.4 Events

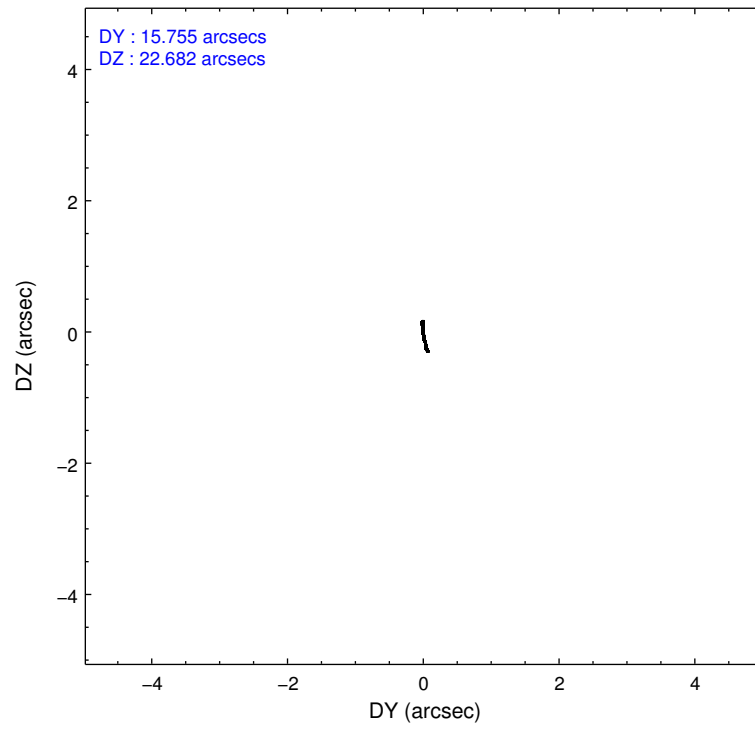
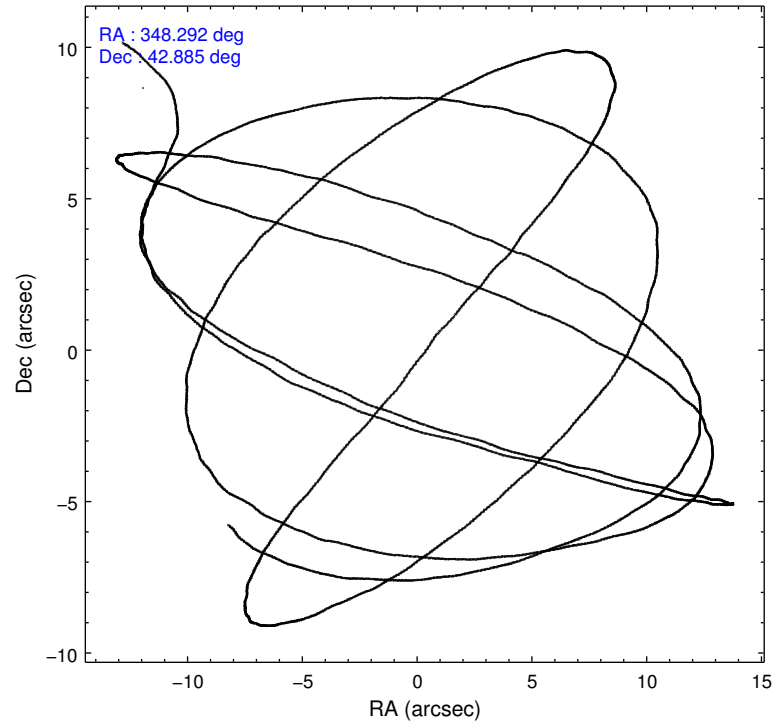
	ccd 2	ccd 3	ccd 6	ccd 7	ccd 8
level 1 events	25533	26133	27330	34024	35375
rejected events	22684	23332	24194	19211	25281
rejected %	88%	89%	88%	56%	71%

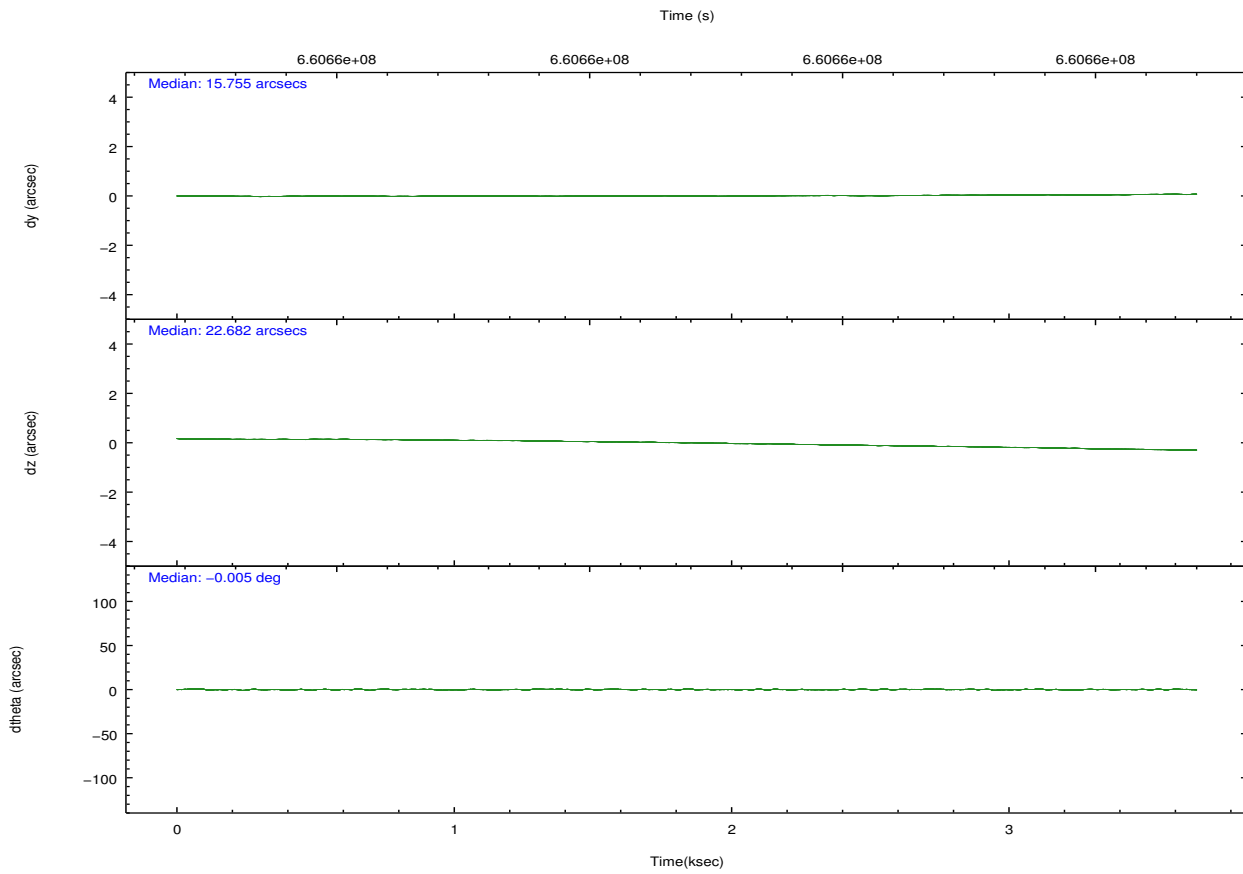
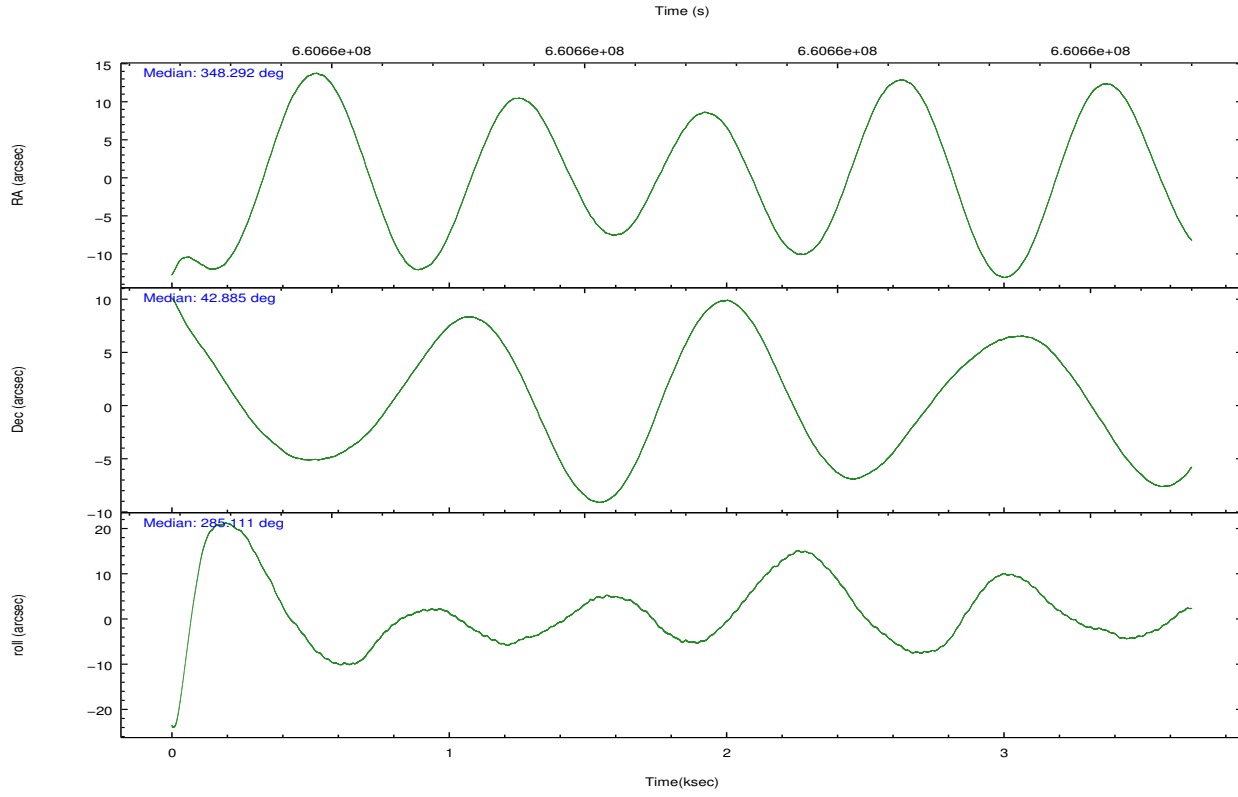
	ccd 2	ccd 3	ccd 6	ccd 7	ccd 8
grade 0 events	1028	1052	1060	1200	2874
	4%	4%	3%	3%	8%
grade 1 events	16	12	10	44	32
	0%	0%	0%	0%	0%
grade 2 events	692	614	714	3207	2496
	2%	2%	2%	9%	7%
grade 3 events	255	257	320	1205	982
	0%	0%	1%	3%	2%
grade 4 events	282	272	303	1152	954
	1%	1%	1%	3%	2%
grade 5 events	1057	1272	1250	3435	1894
	4%	4%	4%	10%	5%
grade 6 events	598	610	740	8067	2801
	2%	2%	2%	23%	7%
grade 7 events	21605	22044	22933	15714	23342
	84%	84%	83%	46%	65%

2.2 Compared Parameters

Parameter	Planned	Actual	Parameter	Planned	Actual
Instrument	ACIS	ACIS	Obspar format version number	7	7
Detector	ACIS-23678	ACIS-23678	Obspar file type	PREDICTED	ACTUAL
Grating	NONE	NONE	Obspar update status	NONE	UPDATED
Data mode	VFAINT	VFAINT	CCD I0 on	N	N
Observation mode	POINTING	POINTING	CCD I1 on	N	N
[deg] Pointing RA	348.265291	348.2921379452003	CCD I2 on	O1	Y
[deg] Pointing Dec	42.904228	42.88505357378545	CCD I3 on	O2	Y
[deg] Pointing Roll	284.967984	285.1061949810918	CCD S0 on	N	N
[mm] SIM focus pos	-0.684267	-0.6828225247311905	CCD S1 on	N	N
[mm] SIM defocus	0	0.001444936568705701	CCD S2 on	Y	Y
[mm] SIM translation stage pos	-190.132523	-190.1425803651734	CCD S3 on	Y	Y
[mm] SIM translation stage offset	0	0.01005778216563158	CCD S4 on	Y	Y
[s] Observation start time (MET)	660658711.184000	660657675.22859	CCD S5 on	N	N
Observation start date	2018-12-08T12:17:22	2018-12-08T12:01:15	Number of optional ACIS chips dropped	0	0
[s] Observation end time (MET)	660662211.184000	660662967.3039	On-chip summing requested	N	N
Observation end date	2018-12-08T13:15:42	2018-12-08T13:29:27	Subarray requested	NONE	NONE
Read mode	TIMED	TIMED	Alternating exposures requested	N	N
			[s] Primary exposure time	0.000000	3.1

2.3 Aspect



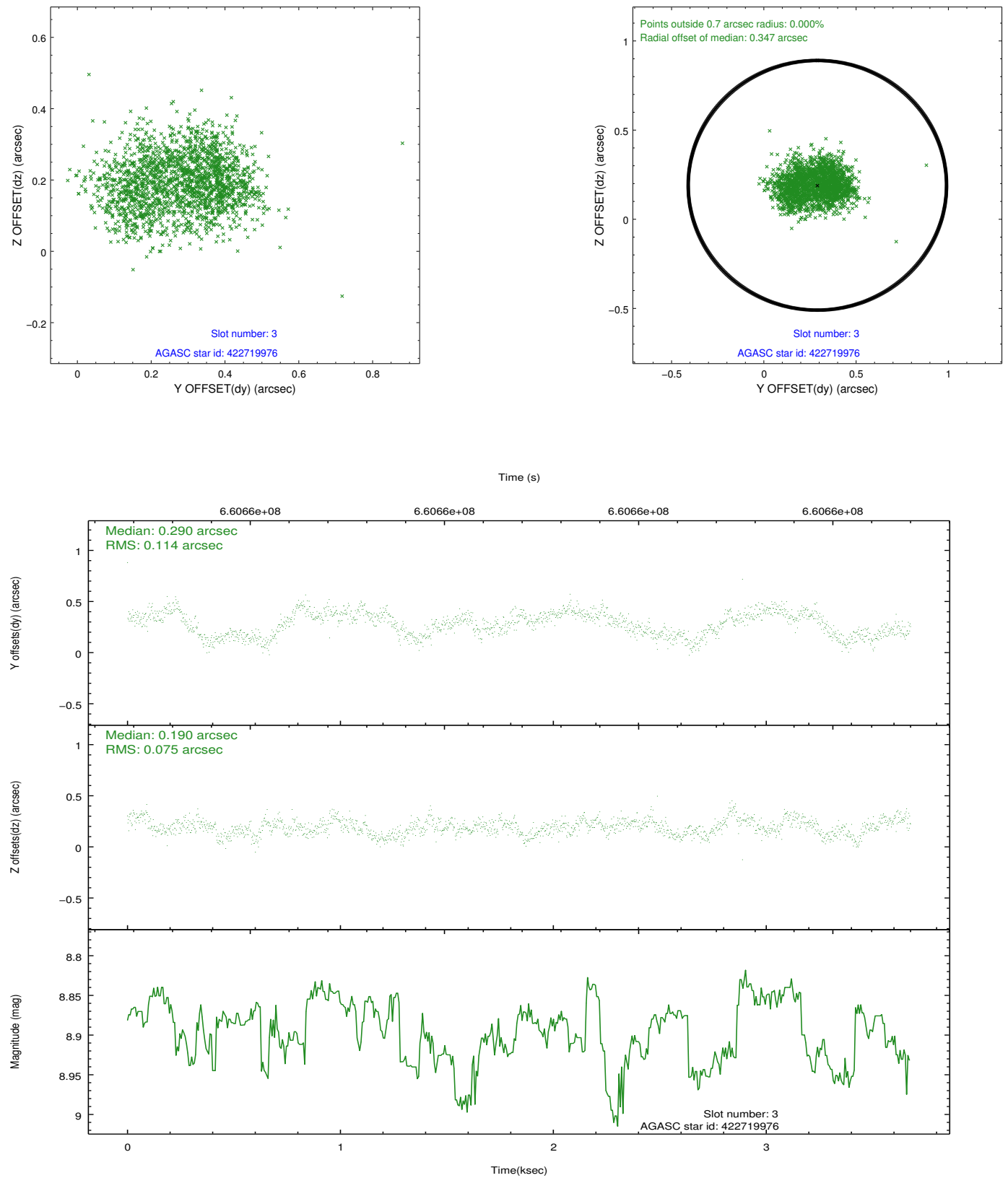


Slot Statistics

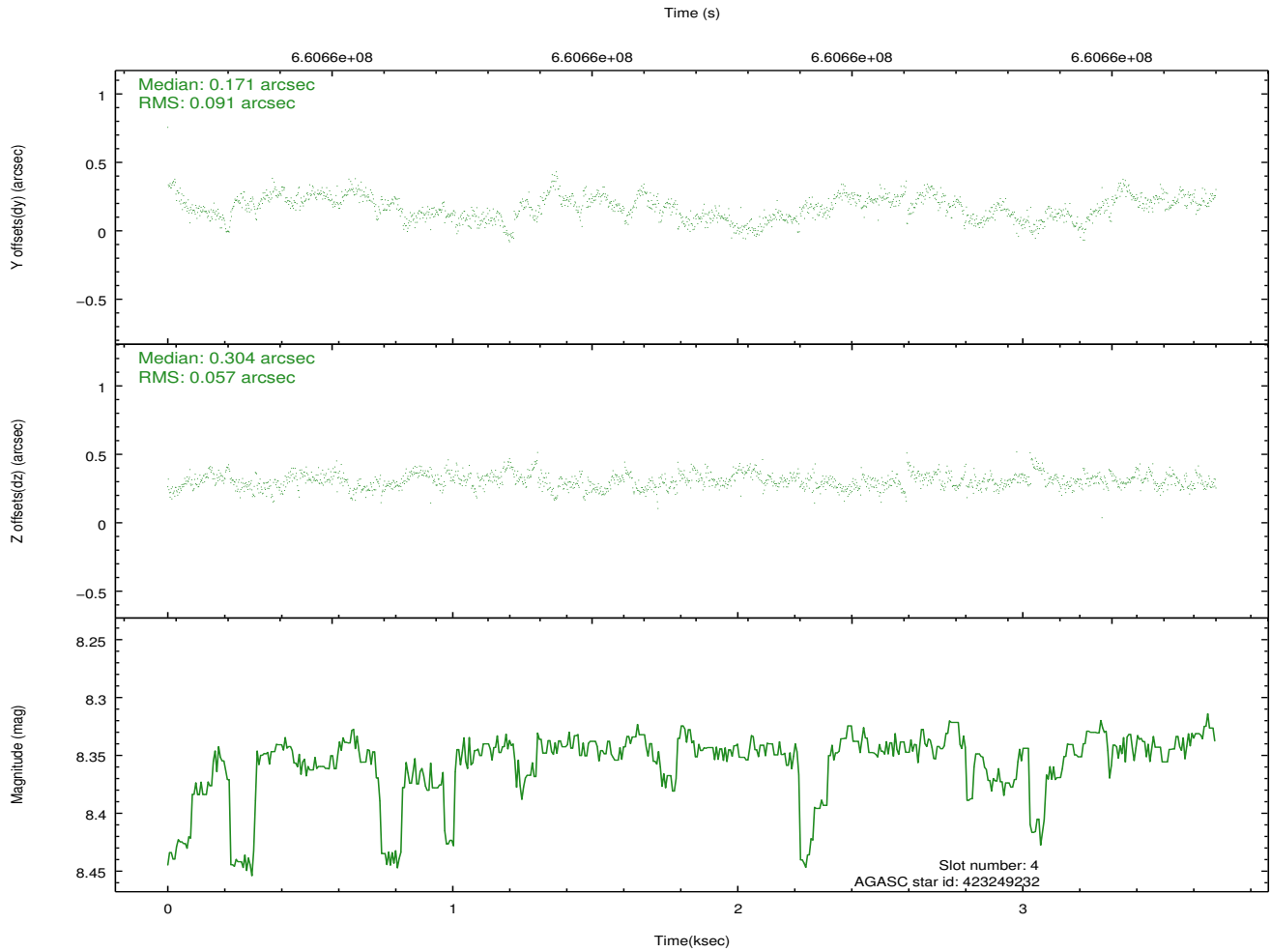
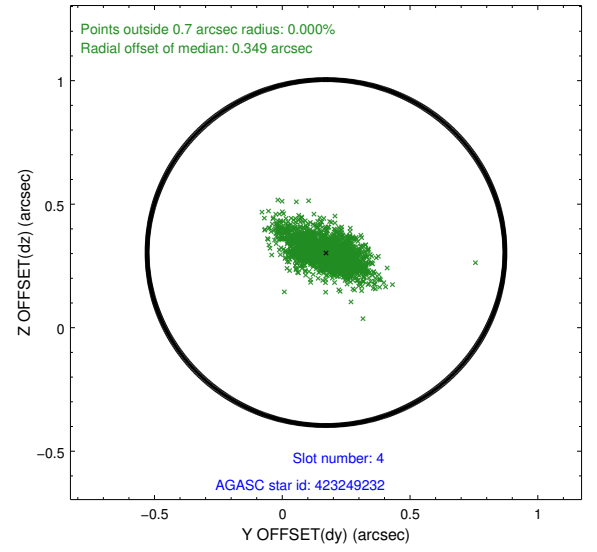
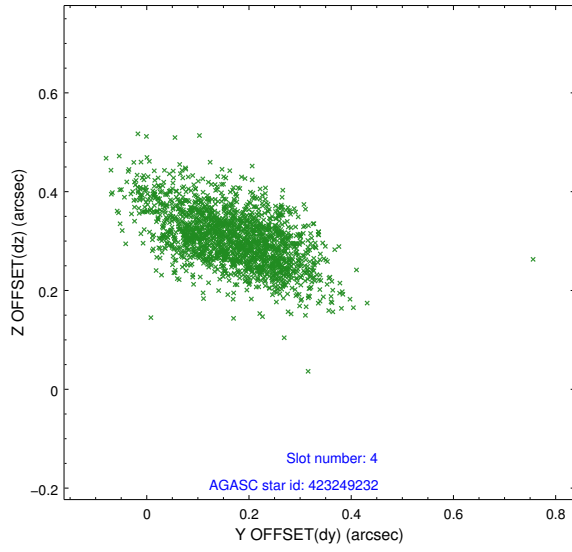
pt	status	used	id	mag	n_pts	frac_pts	med_dy	med_dz	dr1	dr2	ra	dec	mean_y	mea
0	FID		ACIS-S-2	6.95	897	1.000	-0.347	-0.222	0.007	0.011	0.000000	0.000000	-769.06	-1744
1	FID		ACIS-S-4	7.07	897	1.000	0.751	0.226	0.006	0.012	0.000000	0.000000	2144.48	162
2	FID		ACIS-S-5	7.06	898	1.000	-0.436	0.004	0.008	0.013	0.000000	0.000000	-1819.85	158
3	GUIDE	used	422719976	8.90	1792	1.000	0.290	0.190	0.147	0.224	348.254036	42.511368	1358.76	-394
4	GUIDE	used	423249232	8.35	1794	1.000	0.171	0.304	0.108	0.194	348.596887	43.476042	-1765.43	1369
5	GUIDE	used	423250736	8.93	1793	1.000	0.075	0.195	0.099	0.165	348.552689	43.290128	-1149.81	1087
6	GUIDE	used	422717960	7.31	1794	1.000	-0.309	-0.289	0.112	0.168	348.955578	42.579001	1595.71	1466
7	GUIDE	used	423248432	8.87	1794	1.000	-0.208	-0.410	0.113	0.194	349.086899	43.199426	-479.02	2359

2.4 Star Slots

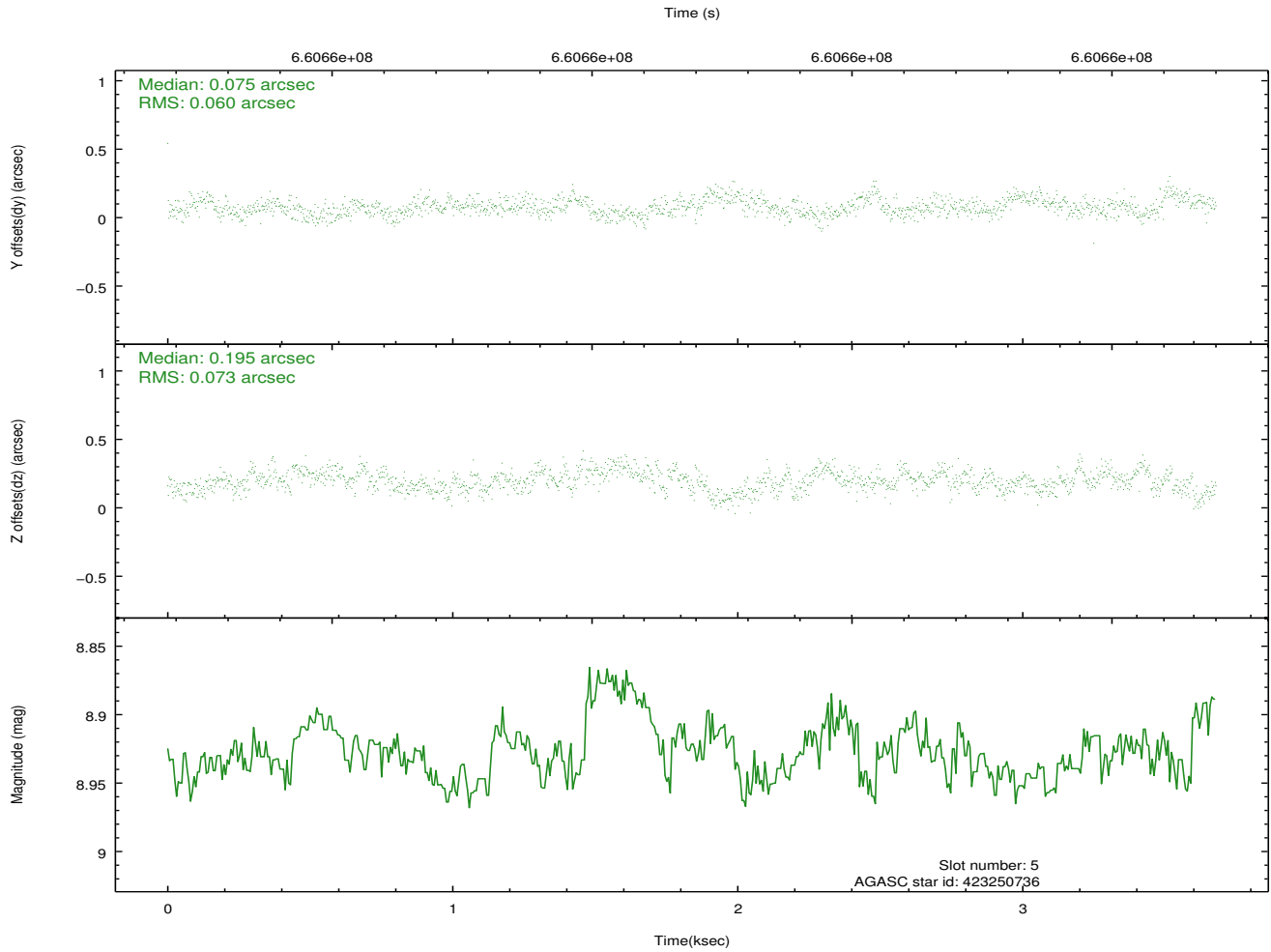
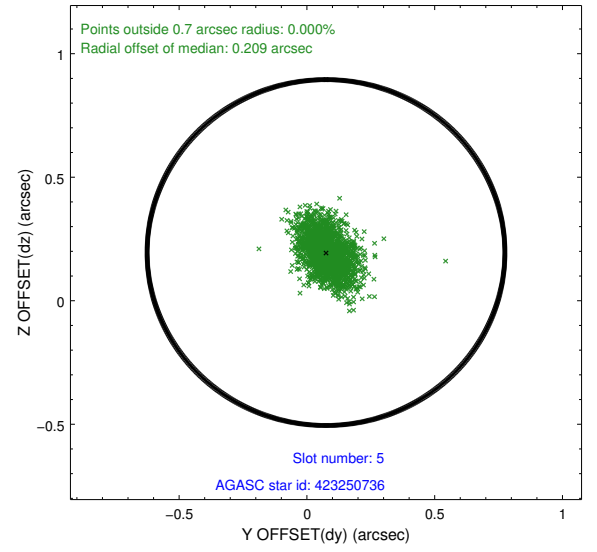
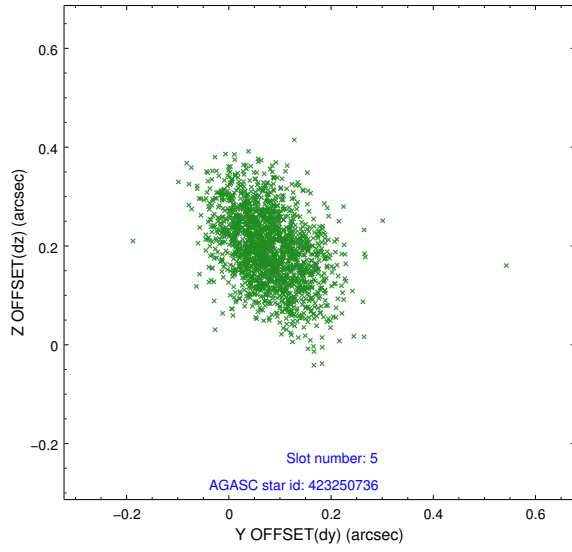
2.4.1 Slot 3



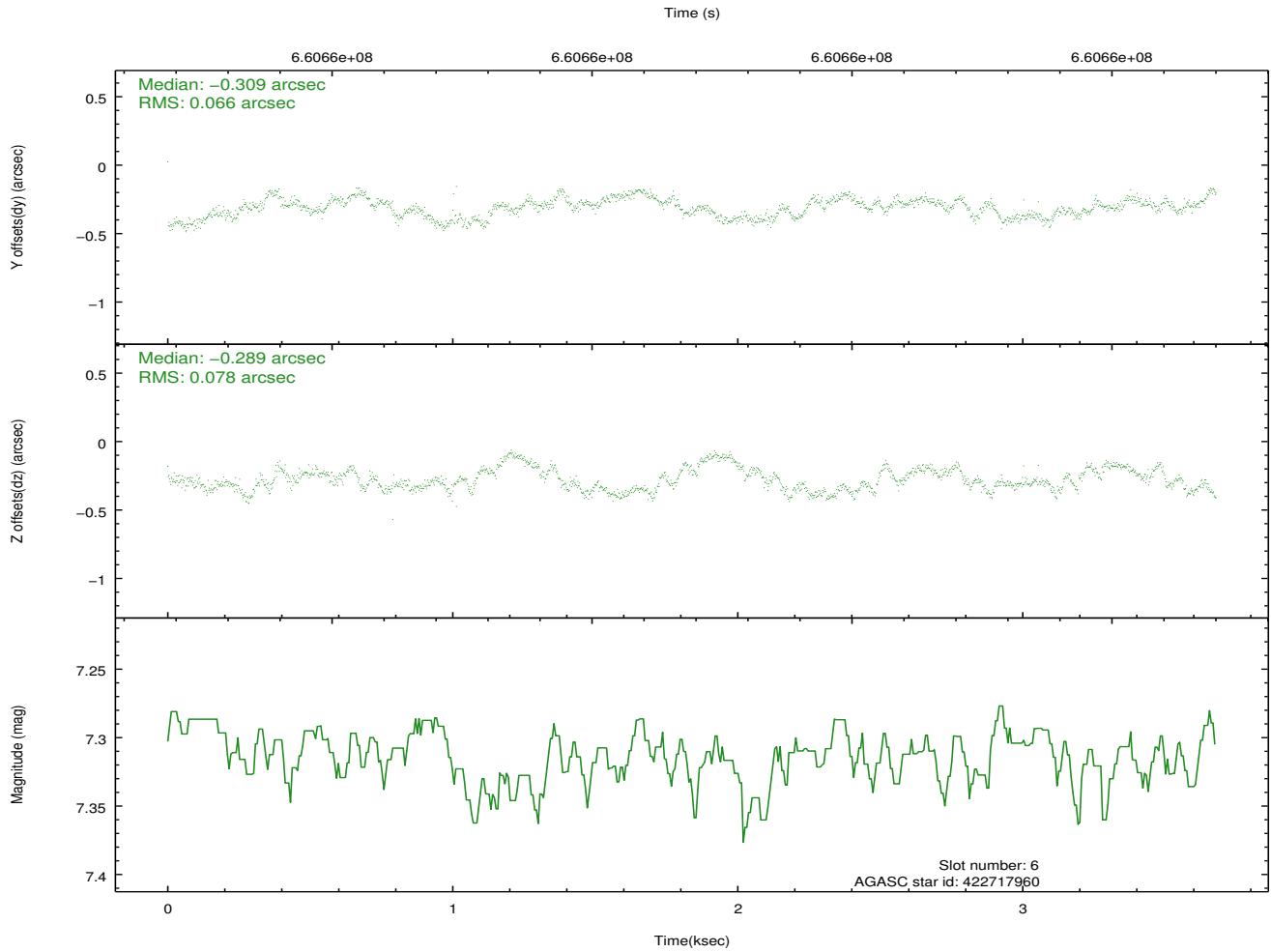
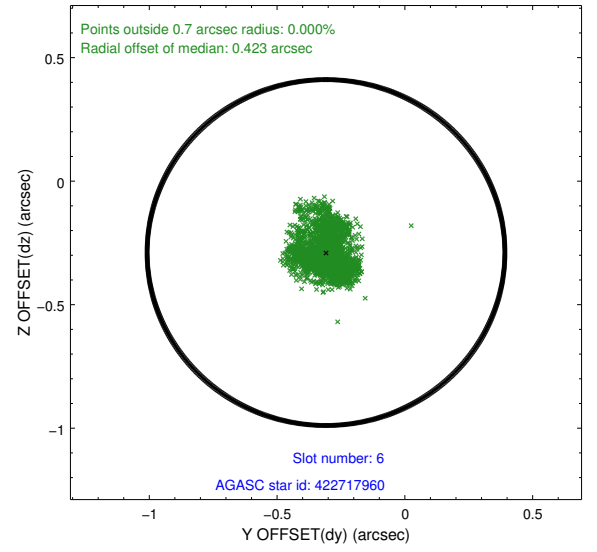
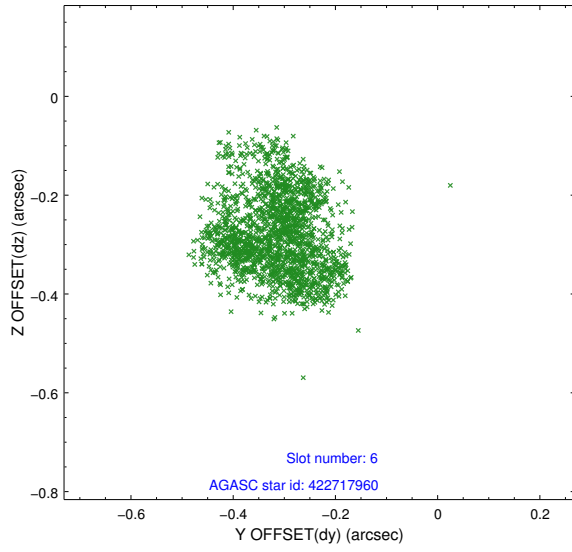
2.4.2 Slot 4



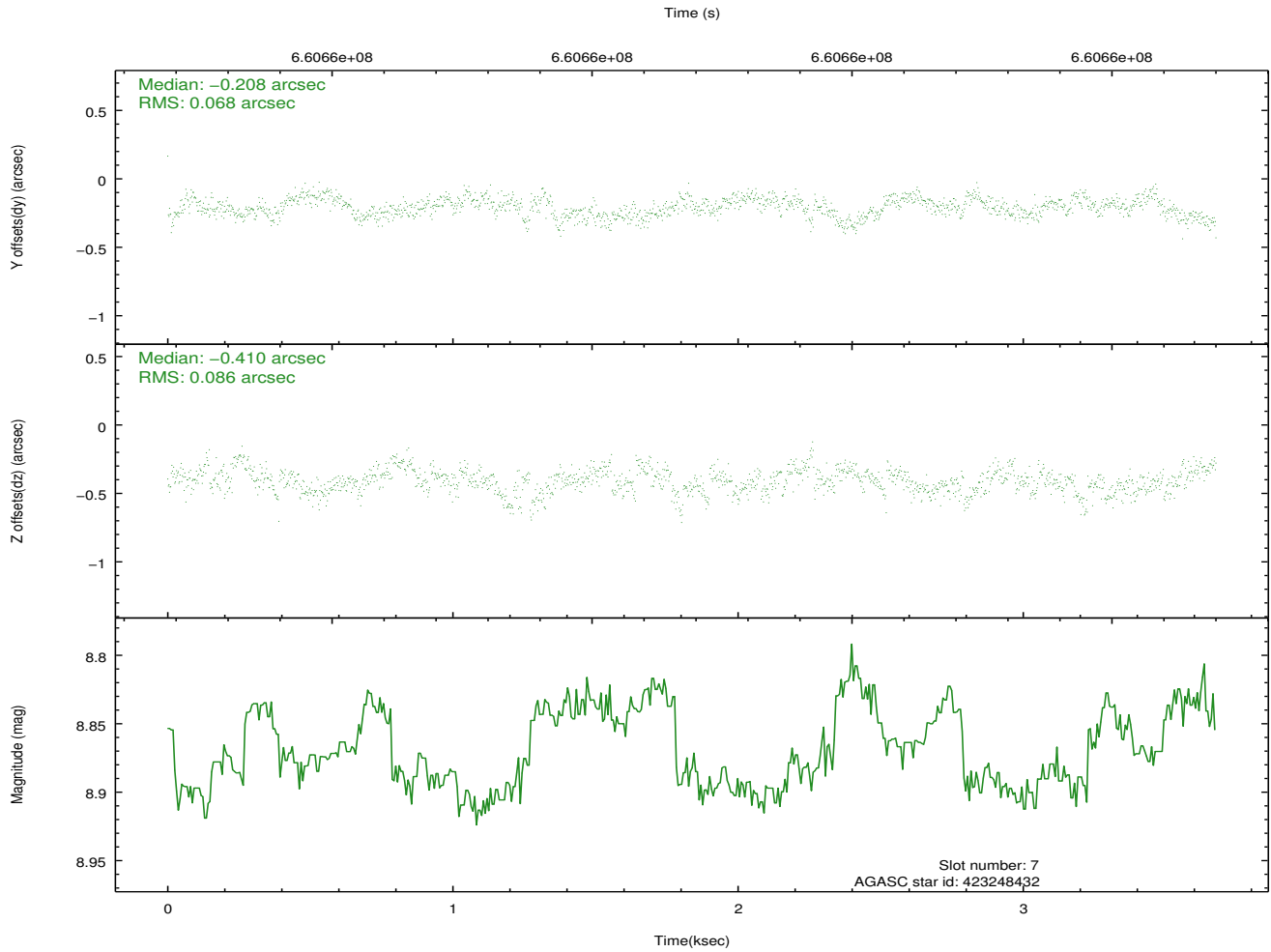
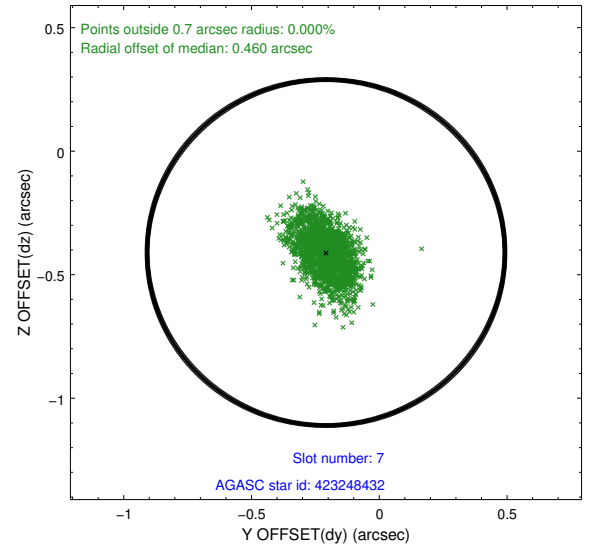
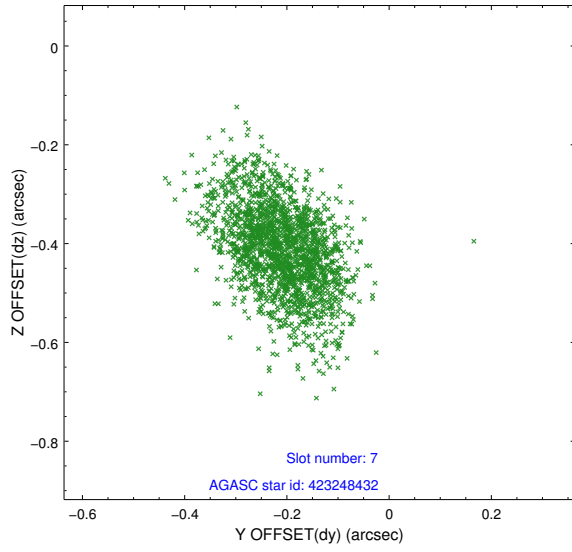
2.4.3 Slot 5



2.4.4 Slot 6

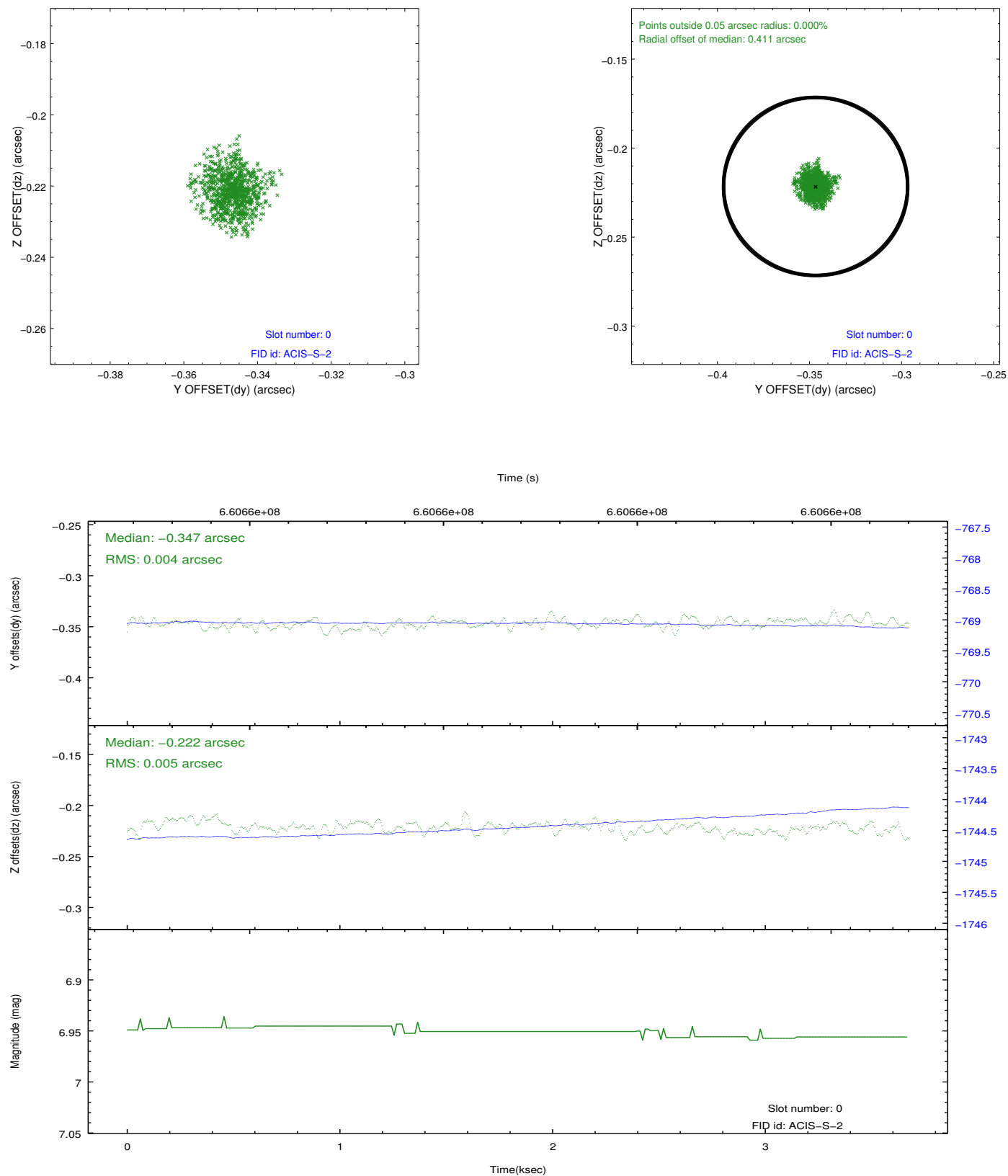


2.4.5 Slot 7

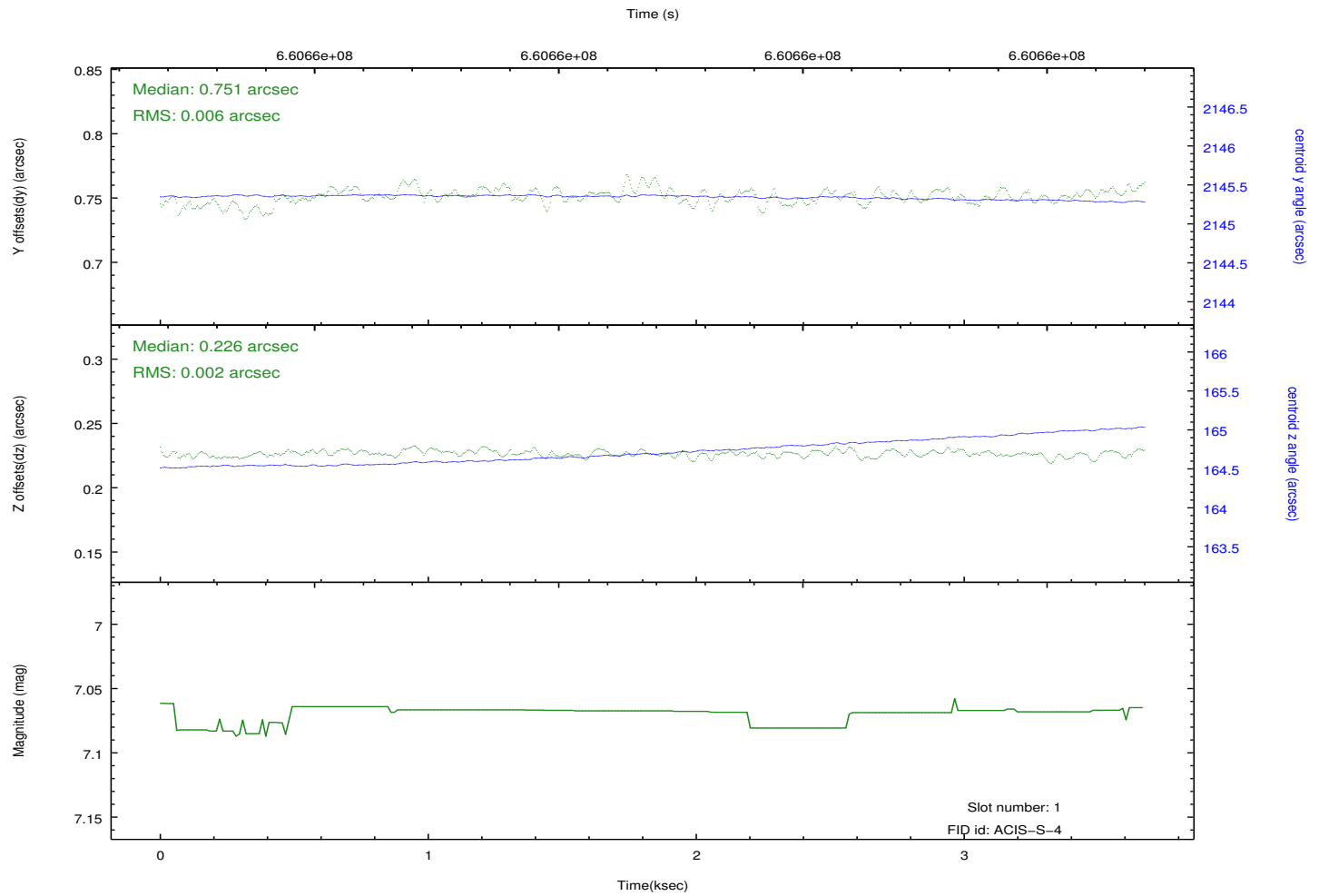
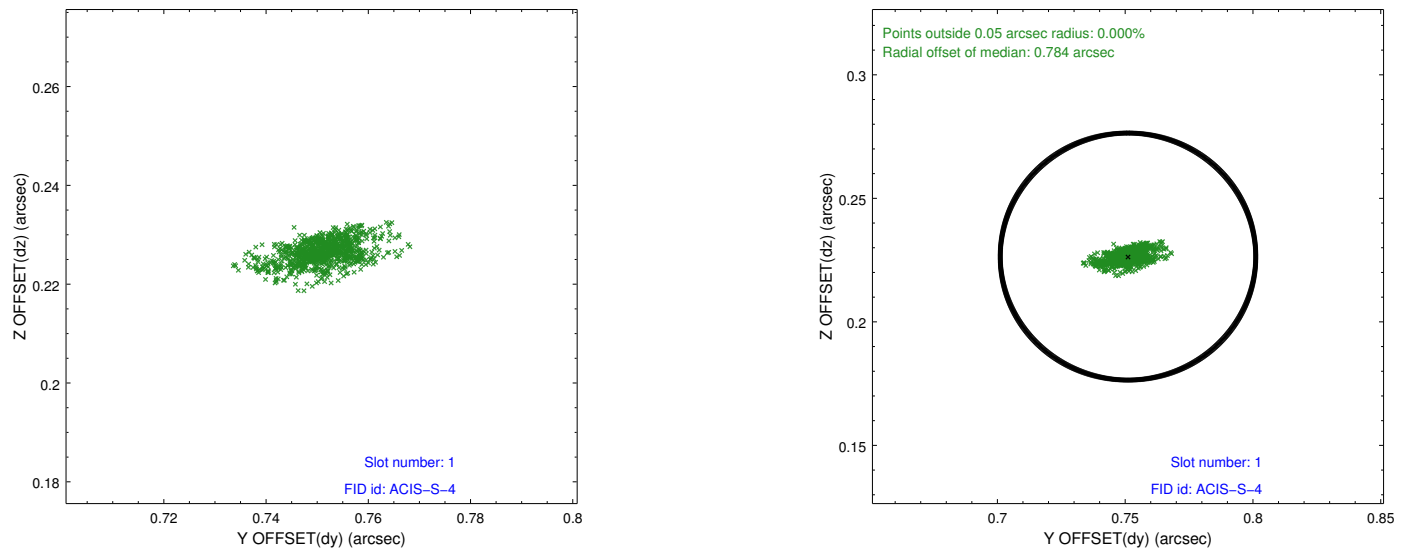


2.5 FID Slots

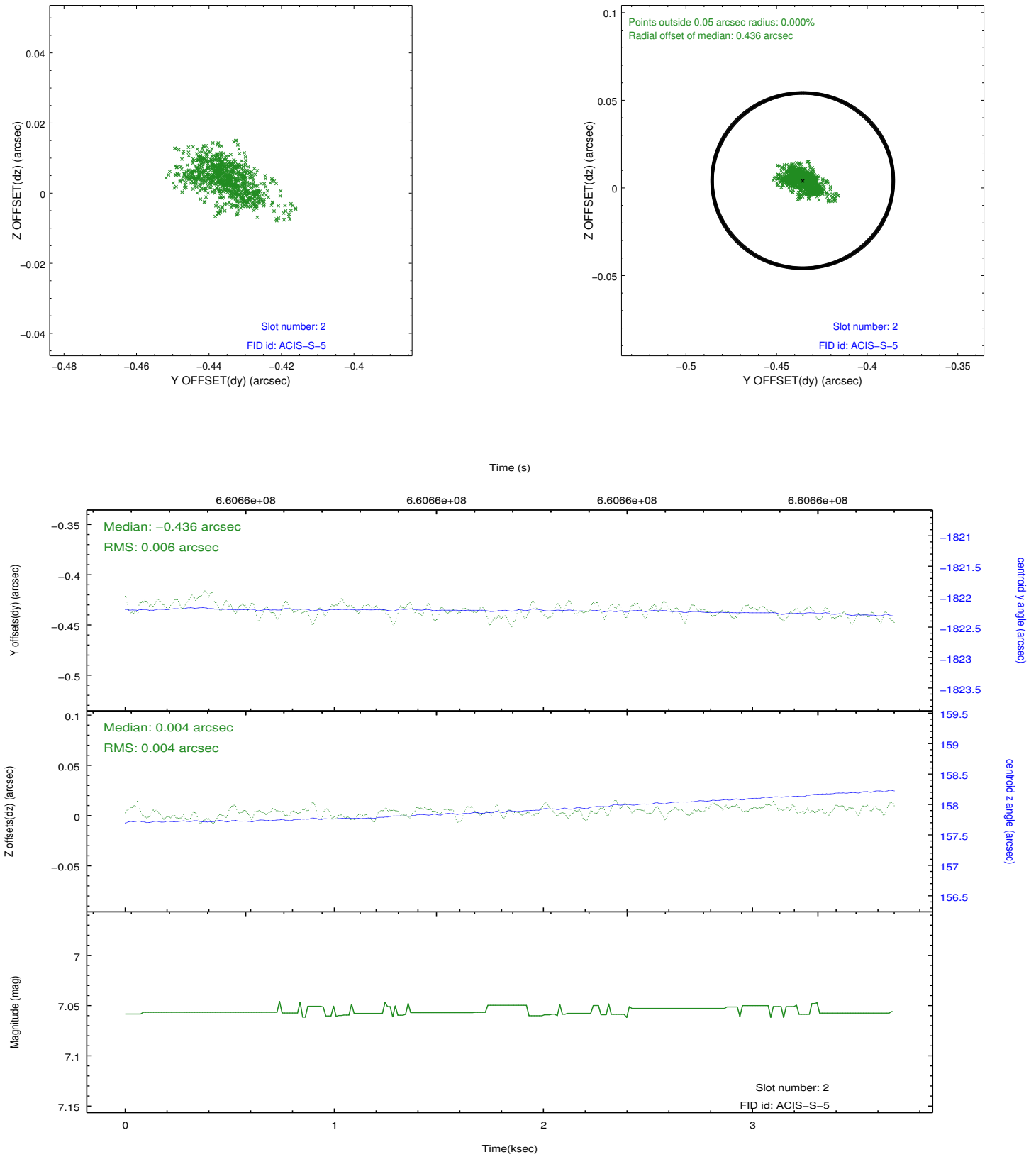
2.5.1 Slot 0



2.5.2 Slot 1



2.5.3 Slot 2



A Summary

A.1 Status

V&V Scientist	Beth Sundheim
V&V Date (YYYY-MM-DD)	2018.12.10
V&V Edition	1
V&V Disposition and Status	OK
V&V Charge Time	3.552600027442

A.2 Comments