

V&V Reference Report

L2 ASCDS Version : 10.7

Observation 19625 - L2 Version 1
Chandra X-Ray Center

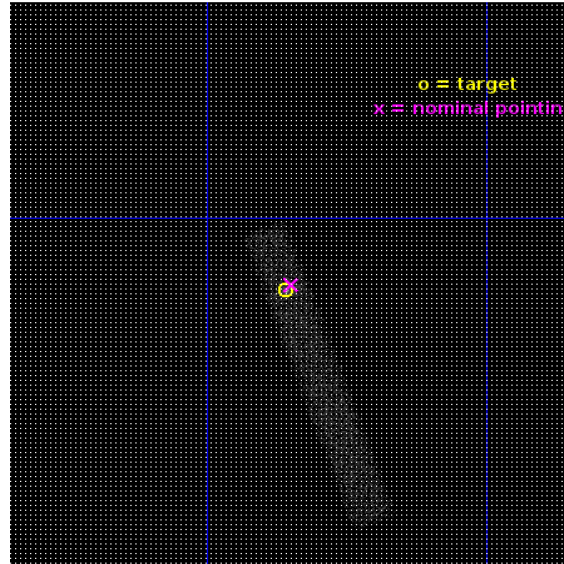
L2 Processing Date : Dec 10 2018

Contents

1	Front	2
2	OBI	3
2.1	OBI	3
2.1.1	Images	3
2.1.2	Bias	3
2.1.3	Parameters	4
2.1.4	Events	4
2.2	Compared Parameters	5
2.3	Aspect	6
2.4	Star Slots	9
2.4.1	Slot 3	9
2.4.2	Slot 4	10
2.4.3	Slot 5	11
2.4.4	Slot 6	12
2.4.5	Slot 7	13
2.5	FID Slots	14
2.5.1	Slot 0	14
2.5.2	Slot 1	15
2.5.3	Slot 2	16
A	Summary	17
A.1	Status	17
A.2	Comments	17

1 Front

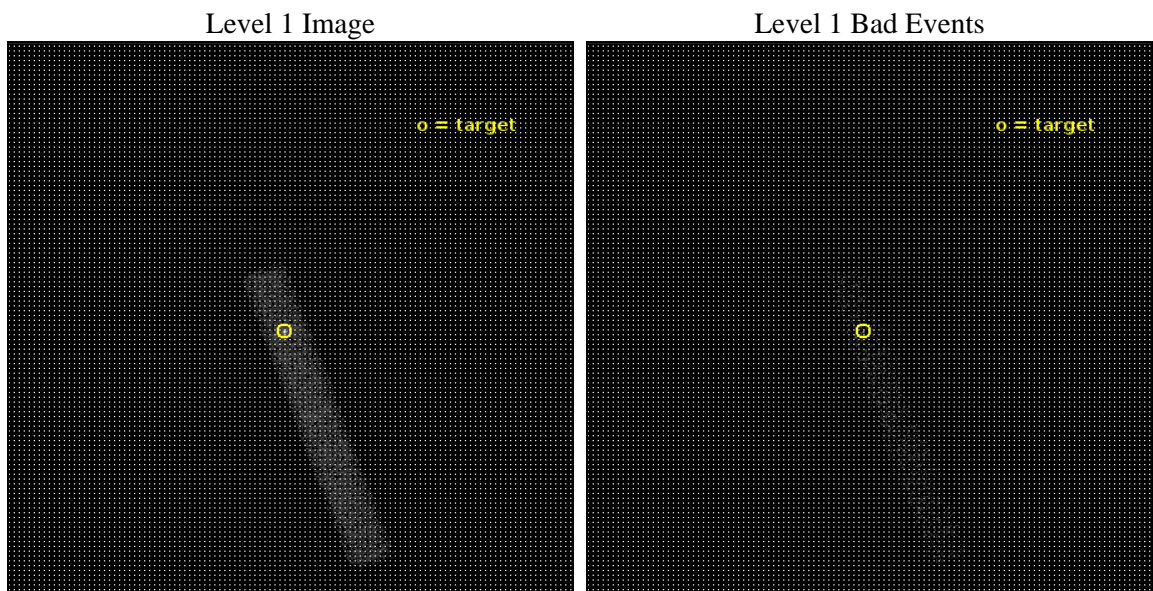
seq_num	703422	Sequence number
obs_id	19625	Observation id
title	MEASURING THE INNERMOST STABLE ORBIT USING MICROLENSING OF THE FE K LINE	Proposal title
observer	George Chartas	Principal investigator
object	RXJ1131-1231	Source name
dtcycle	0	
cycle	P	events from which exps? Prim/Second/Both
ra_targ	172.965	Observer's specified target RA [deg]
dec_targ	-12.5325	Observer's specified target Dec [deg]
ra_nom	172.96231525137	Nominal RA [deg]
dec_nom	-12.530197285322	Nominal Dec [deg]
roll_nom	70.156042254858	Nominal Roll [deg]
revision	1	Processing version of data
ontime	12569.199250698	Sum of GTIs [s]
livetime	11399.600263648	Livetime [s]
ontime7	12569.199250698	Sum of GTIs [s]
l2events	13621	Number of level 2 events



2 OBI

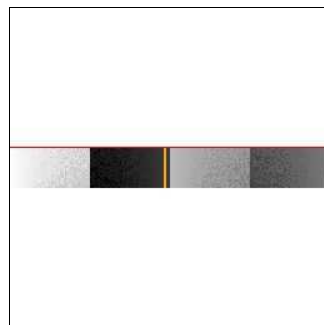
2.1 OBI

2.1.1 Images



2.1.2 Bias

Chip 7



2.1.3 Parameters

obi_num	0	Obi number	sched_exp_time	12500.000000	[s] Scheduled observation exposure time
ascdsver	10.7	Processing system revision	ontime	12569.199250698	Sum of GTIs [s]
caldsver	4.8.0.1	 	ontime7	12569.199250698	Sum of GTIs [s]
date	2018-12-10T18:51:04	Date and time of file creation	l1events	22079	Number of level 1 events
revision	1	Processing version of data			

2.1.4 Events

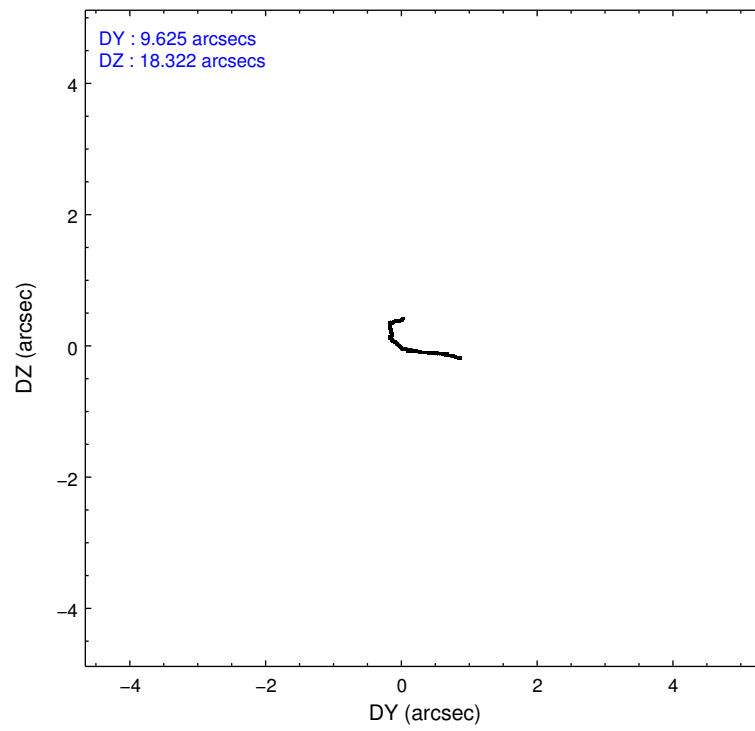
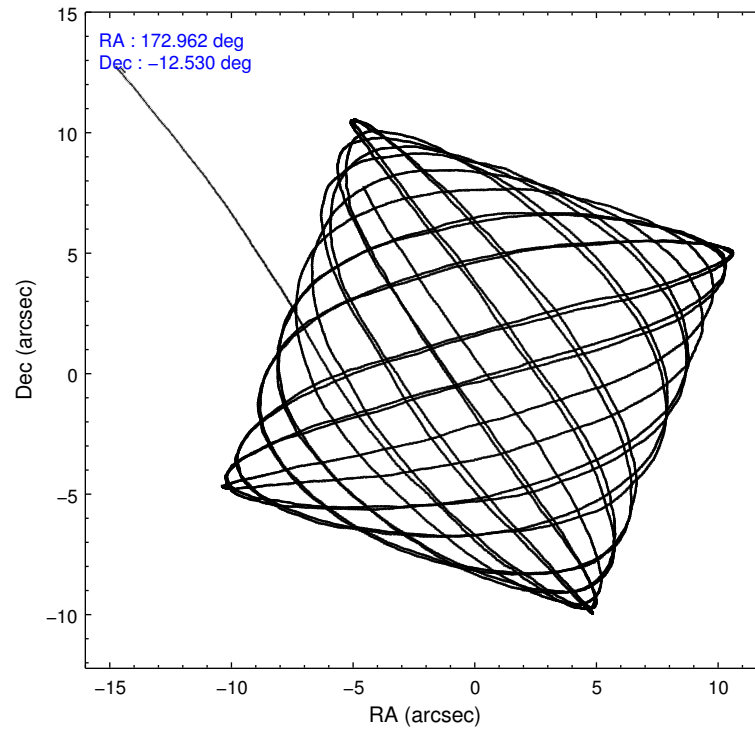
	ccd 7
level 1 events	22079
rejected events	8112
rejected %	36%

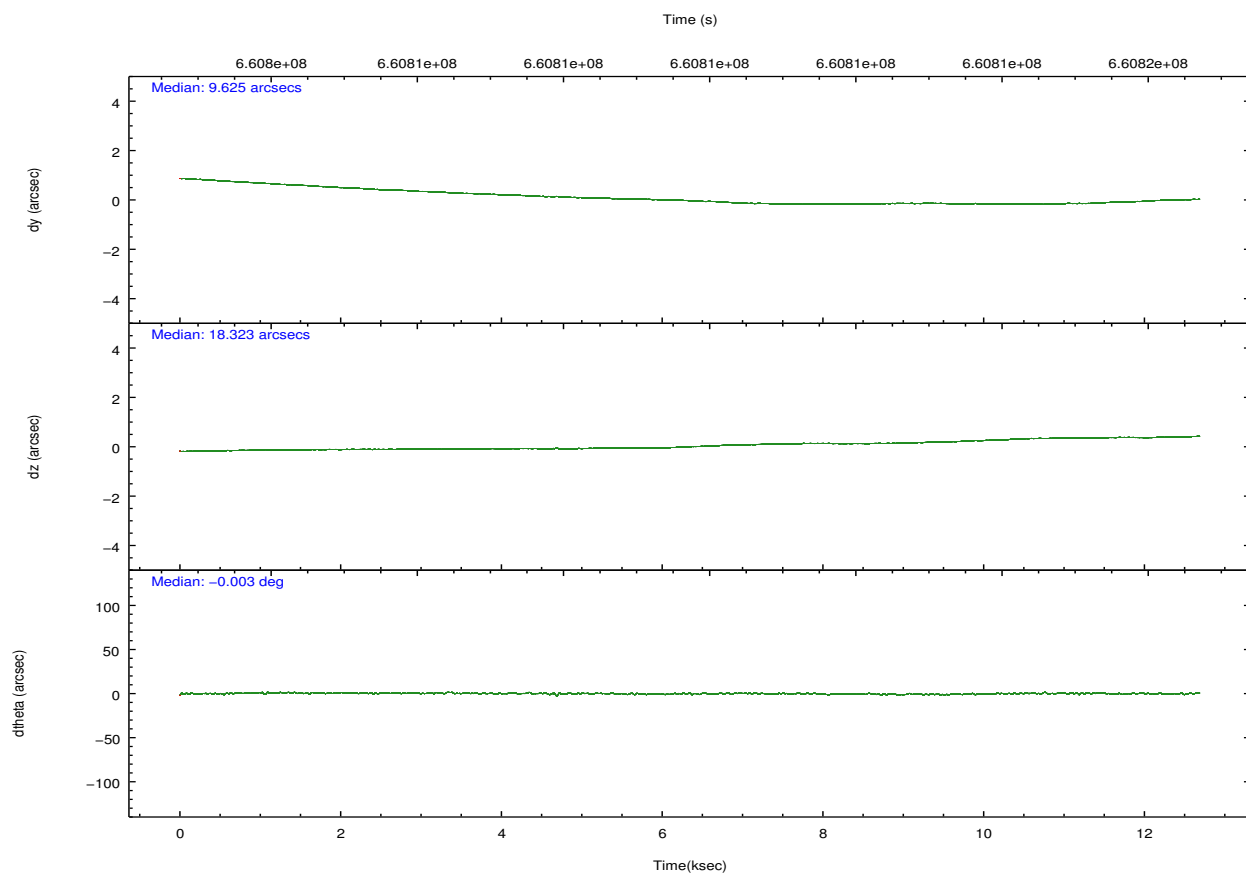
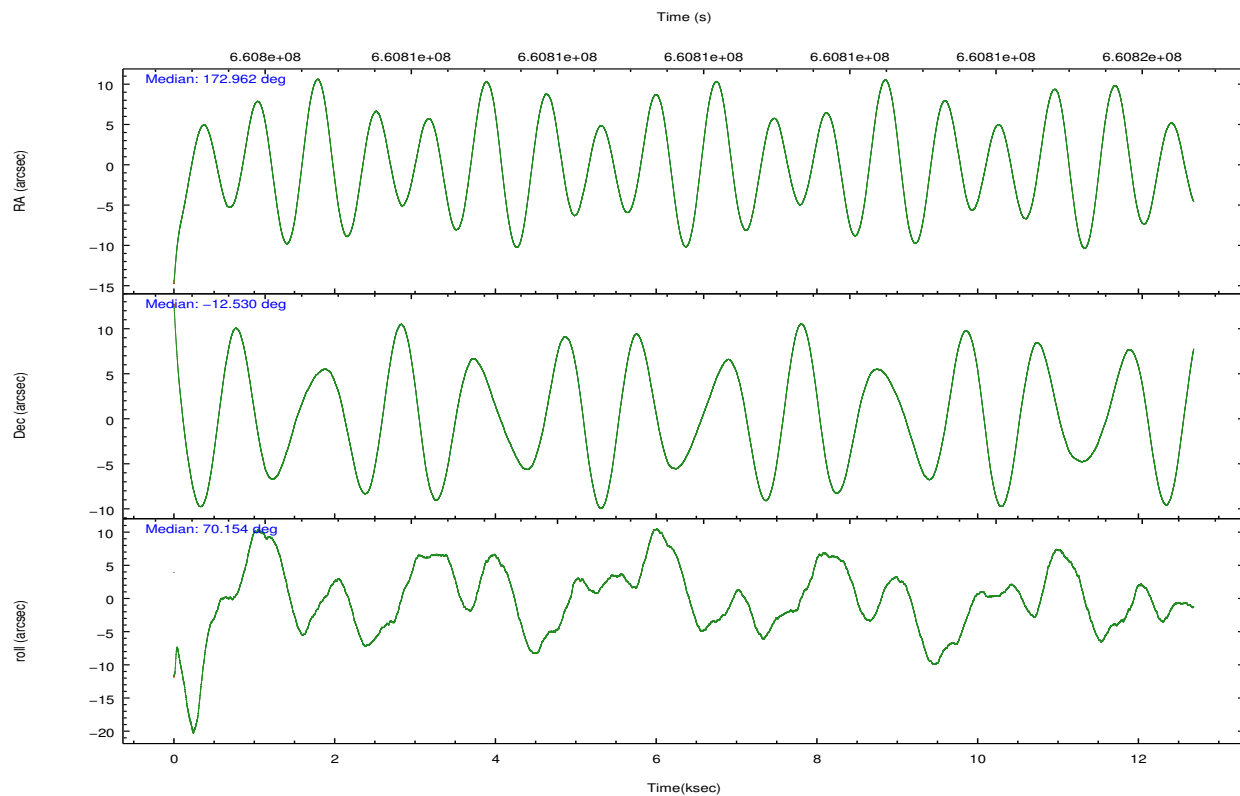
	ccd 7
grade 0 events	2399
	10%
grade 1 events	42
	0%
grade 2 events	3067
	13%
grade 3 events	1715
	7%
grade 4 events	1702
	7%
grade 5 events	1609
	7%
grade 6 events	5084
	23%
grade 7 events	6461
	29%

2.2 Compared Parameters

Parameter	Planned	Actual	Parameter	Planned	Actual
Instrument	ACIS	ACIS	Obspar format version number	7	7
Detector	ACIS-7	ACIS-7	Obspar file type	PREDICTED	ACTUAL
Grating	NONE	NONE	Obspar update status	NONE	UPDATED
Data mode	VFAINT	VFAINT	Number of optional ACIS chips dropped	0	0
Observation mode	POINTING	POINTING	On-chip summing requested	N	N
[deg] Pointing RA	172.967653	172.9623152513682	Subarray requested	CUSTOM	1/8
[deg] Pointing Dec	-12.557107	-12.53019728532182	Subarray start row	449	449
[deg] Pointing Roll	70.000570	70.15604225485822	Subarray row count	128	128
[mm] SIM focus pos	-0.684267	-0.6828225247311905	Alternating exposures requested	N	N
[mm] SIM defocus	0	0.001444936568705701	[s] Primary exposure time	0.000000	0.4
[mm] SIM translation stage pos	-190.132523	-190.1400660498719			
[mm] SIM translation stage offset	0	0.00754346686406393			
[s] Observation start time (MET)	660803554.184000	660802778.33724			
Observation start date	2018-12-10T04:31:25	2018-12-10T04:19:38			
[s] Observation end time (MET)	660816054.184000	660816974.07559			
Observation end date	2018-12-10T07:59:45	2018-12-10T08:16:14			
Read mode	TIMED	TIMED			

2.3 Aspect



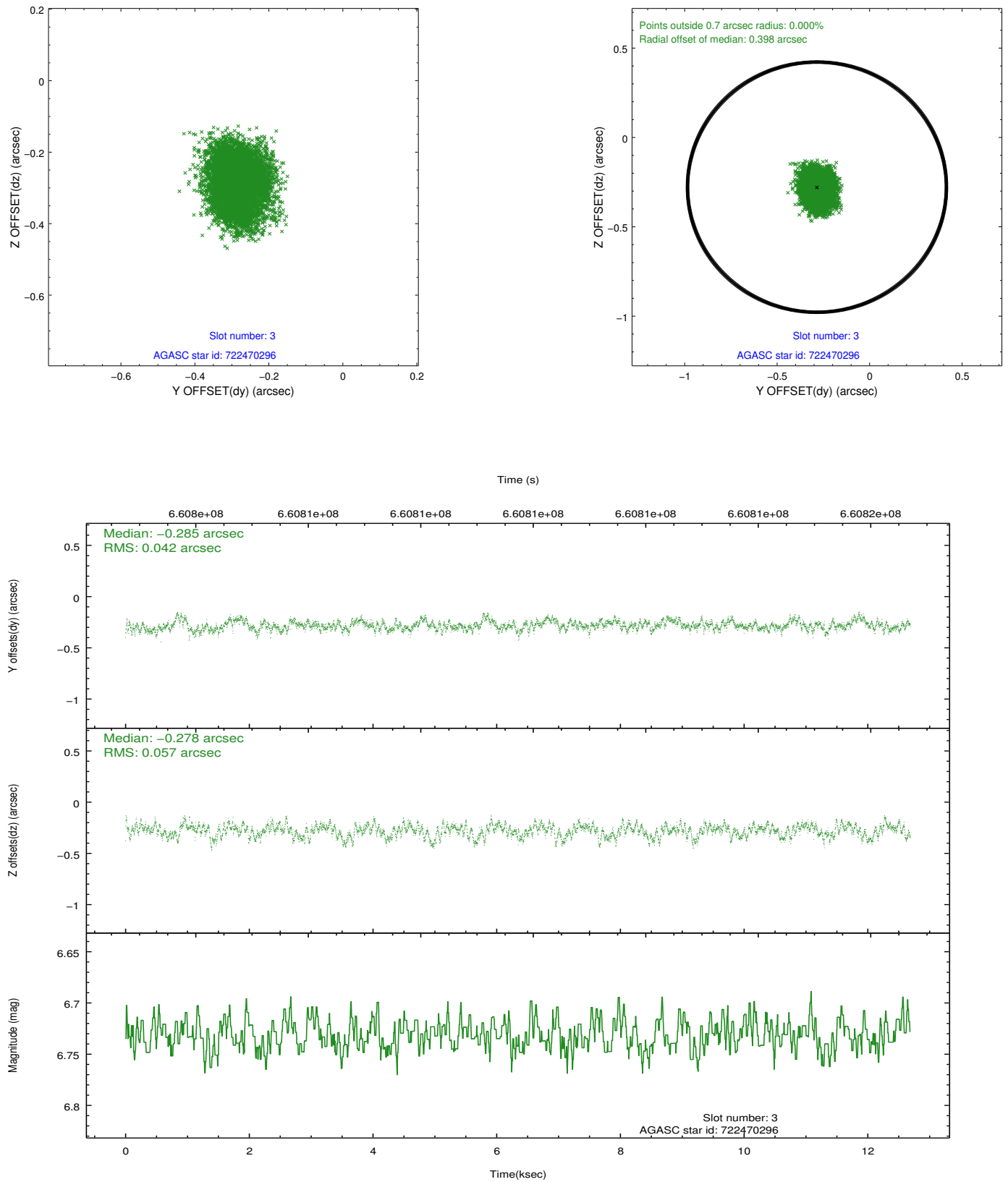


Slot Statistics

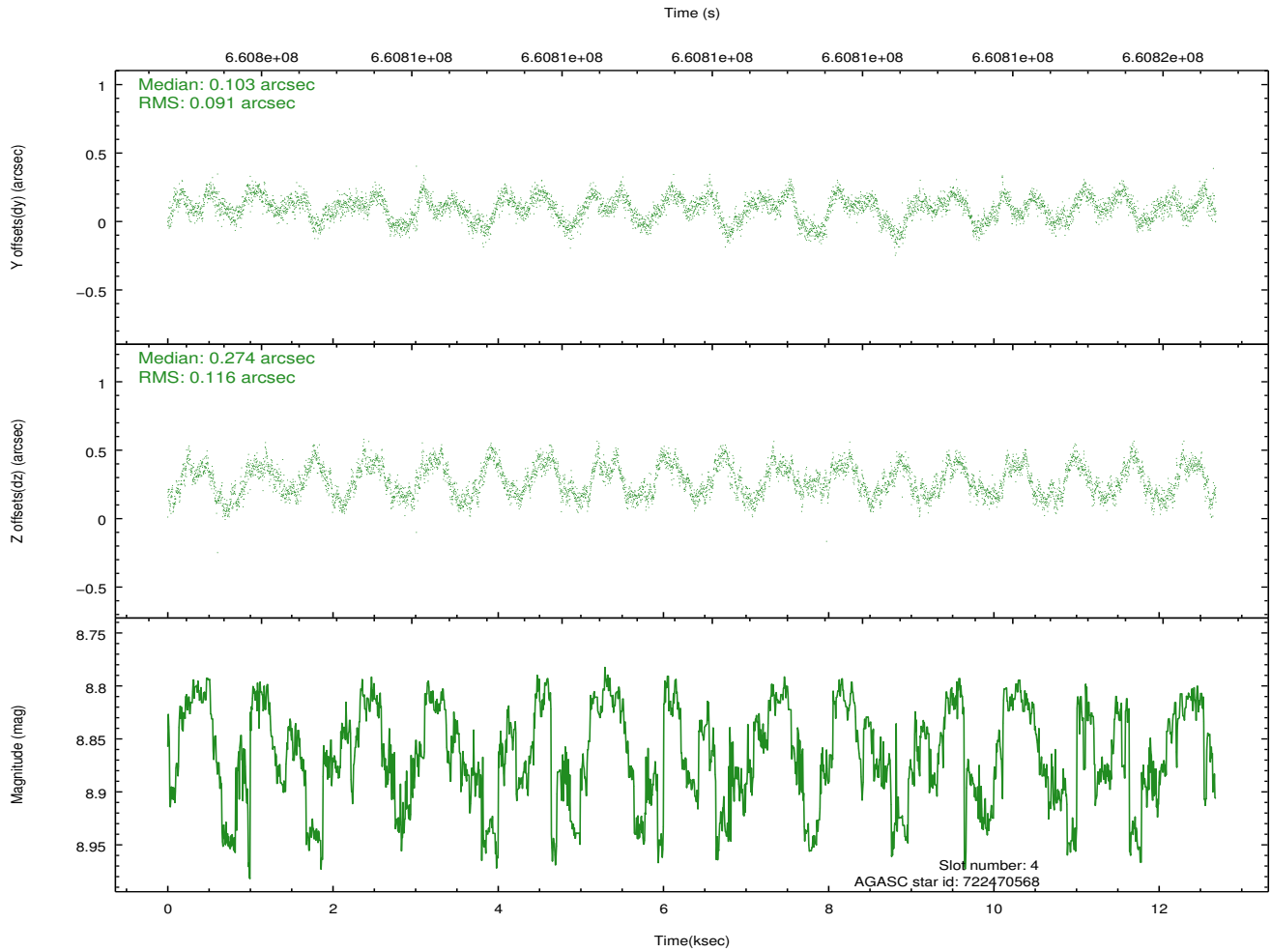
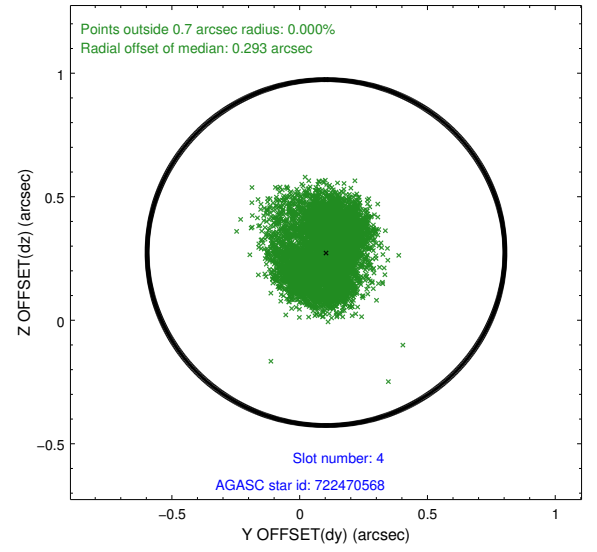
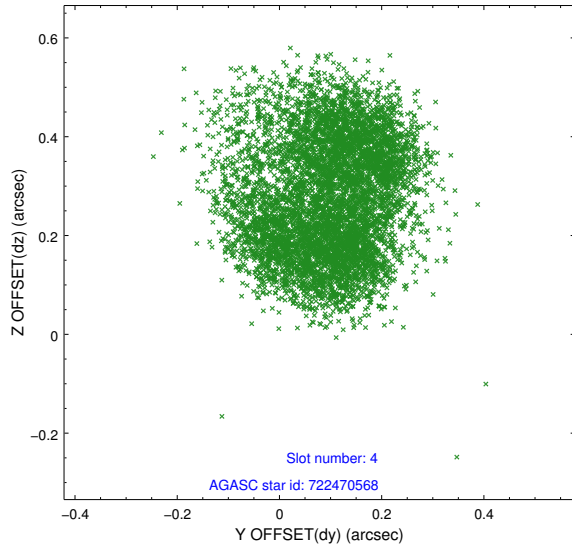
pt	status	used	id	mag	n_pts	frac_pts	med_dy	med_dz	dr1	dr2	ra	dec	mean_y	mea
0	FID		ACIS-S-1	7.12	3095	1.000	0.211	0.097	0.010	0.015	0.000000	0.000000	933.60	-1735
1	FID		ACIS-S-2	7.02	3095	1.000	-0.330	-0.190	0.009	0.014	0.000000	0.000000	-762.63	-1740
2	FID		ACIS-S-6	7.28	3095	1.000	0.099	0.099	0.008	0.014	0.000000	0.000000	399.08	805
3	GUIDE	used	722470296	6.73	6190	1.000	-0.285	-0.278	0.077	0.124	172.921689	-12.381367	539.55	368
4	GUIDE	used	722470568	8.87	6181	1.000	0.103	0.274	0.162	0.231	173.210269	-12.342558	1018.03	-537
5	GUIDE	used	722473176	9.40	6179	1.000	-0.225	-0.448	0.196	0.297	172.599746	-12.066793	1214.98	1820
6	GUIDE	used	722871728	9.61	6167	1.000	0.082	0.360	0.220	0.370	173.202235	-12.568355	244.38	-787
7	GUIDE	used	722873464	7.28	6189	1.000	0.322	0.078	0.097	0.172	172.661543	-13.050266	-2035.86	400

2.4 Star Slots

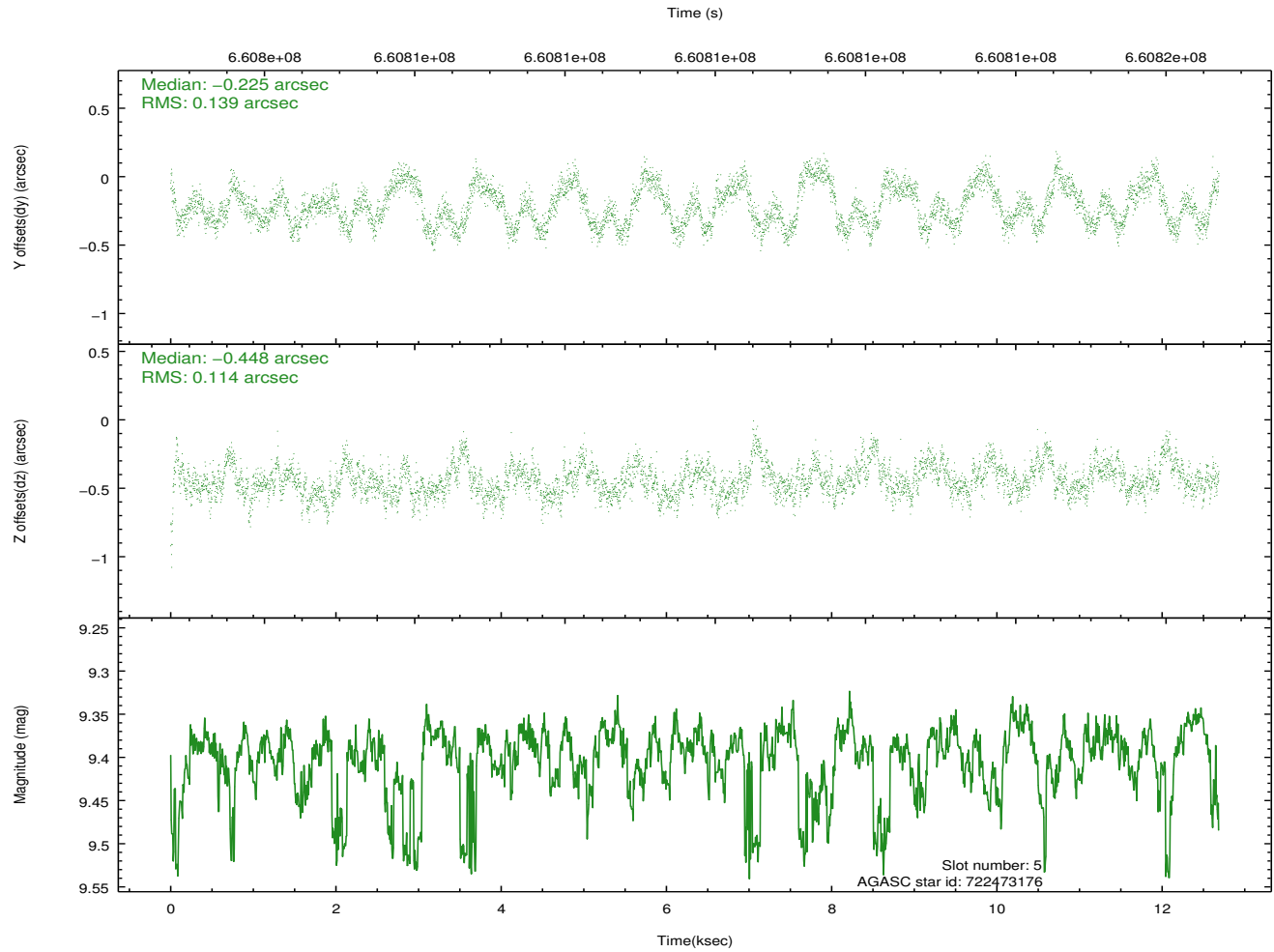
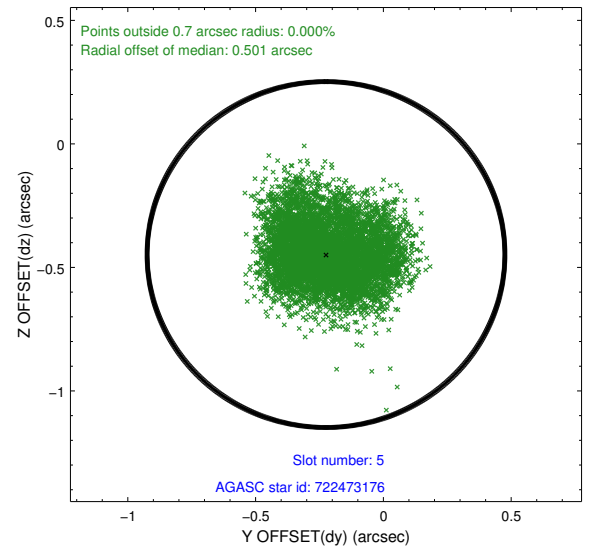
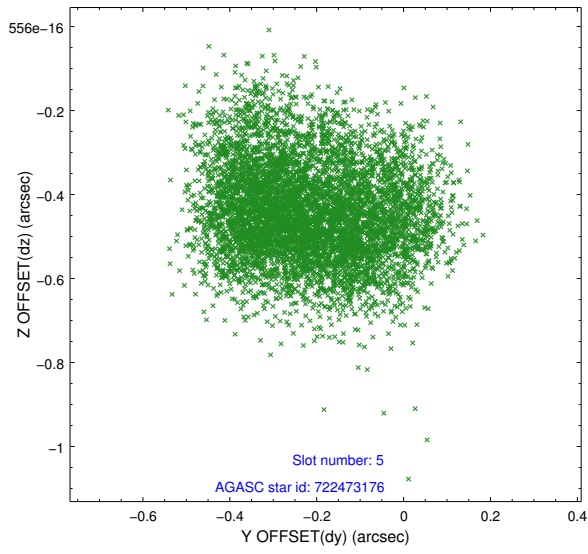
2.4.1 Slot 3



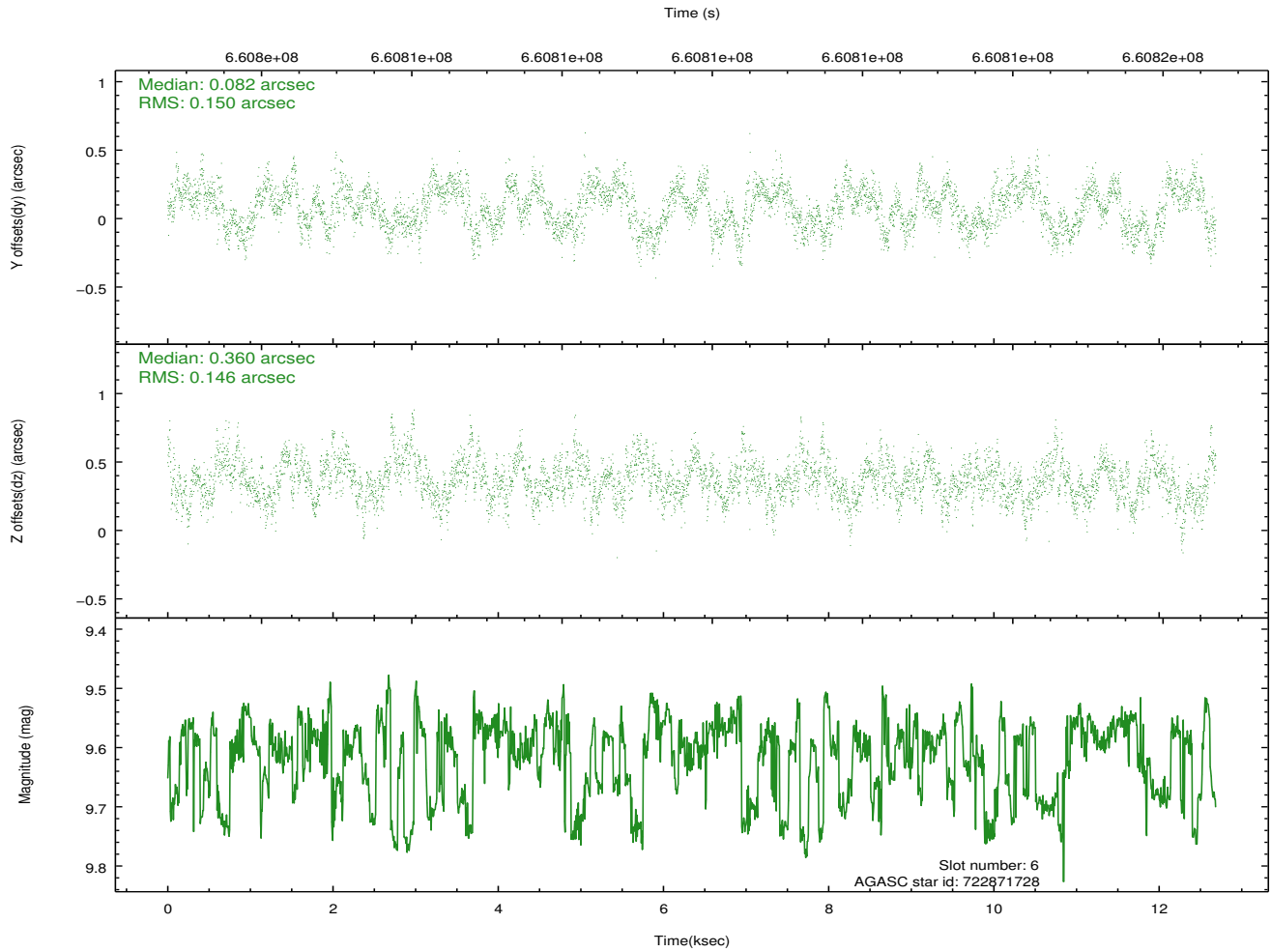
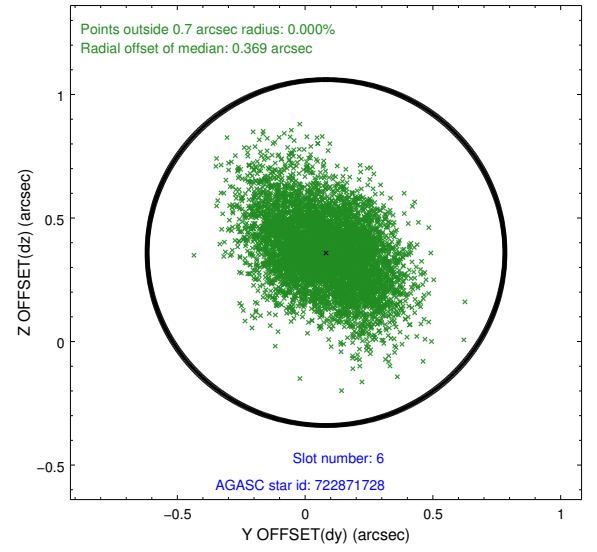
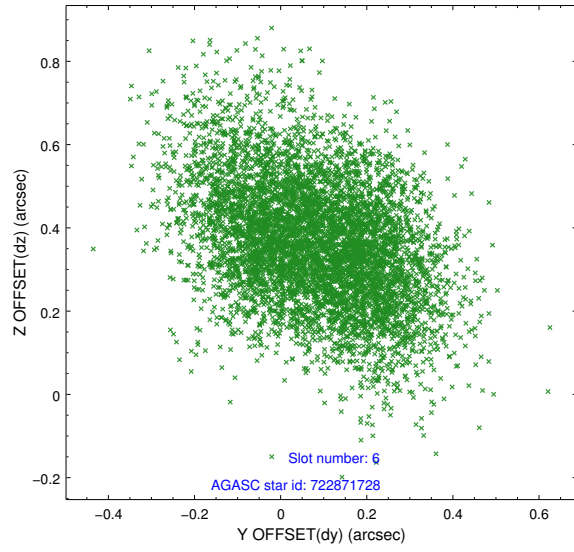
2.4.2 Slot 4



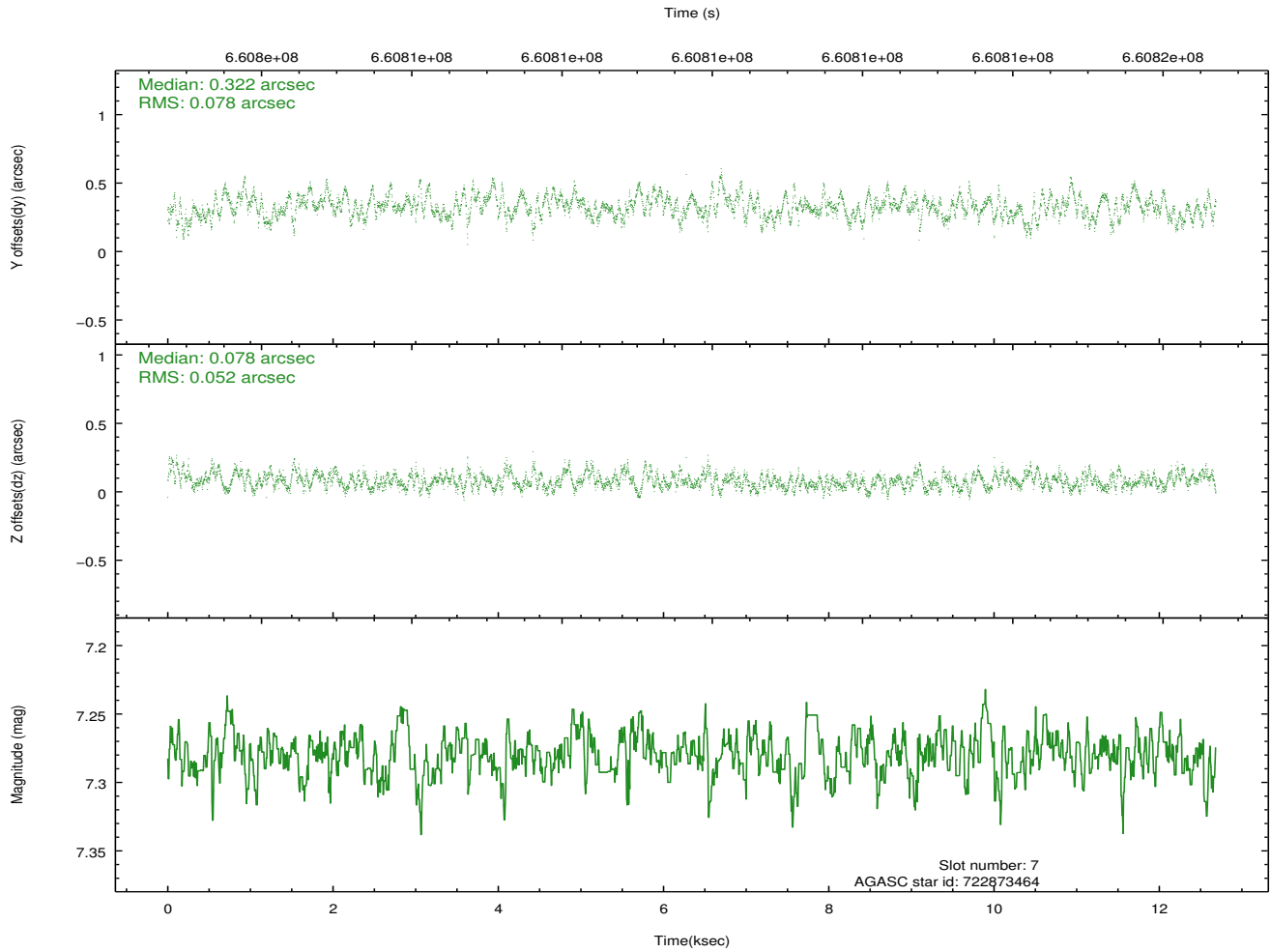
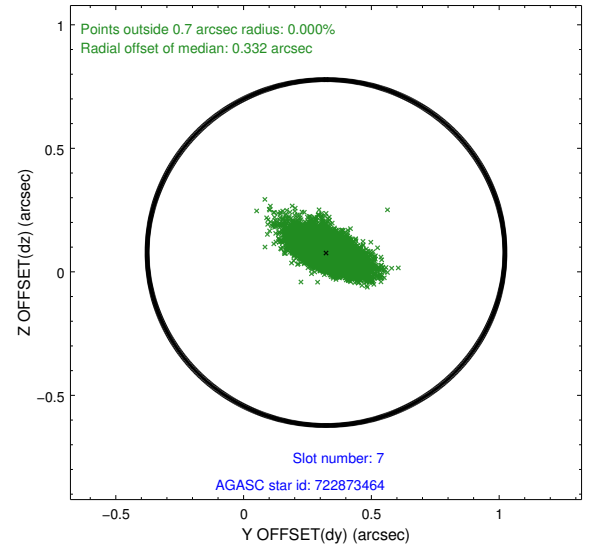
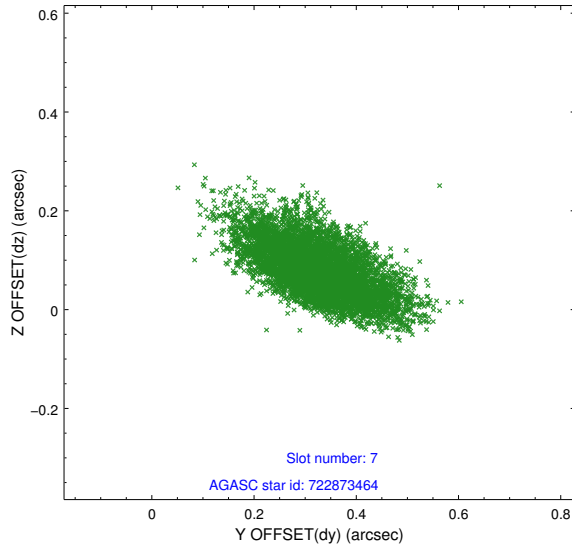
2.4.3 Slot 5



2.4.4 Slot 6

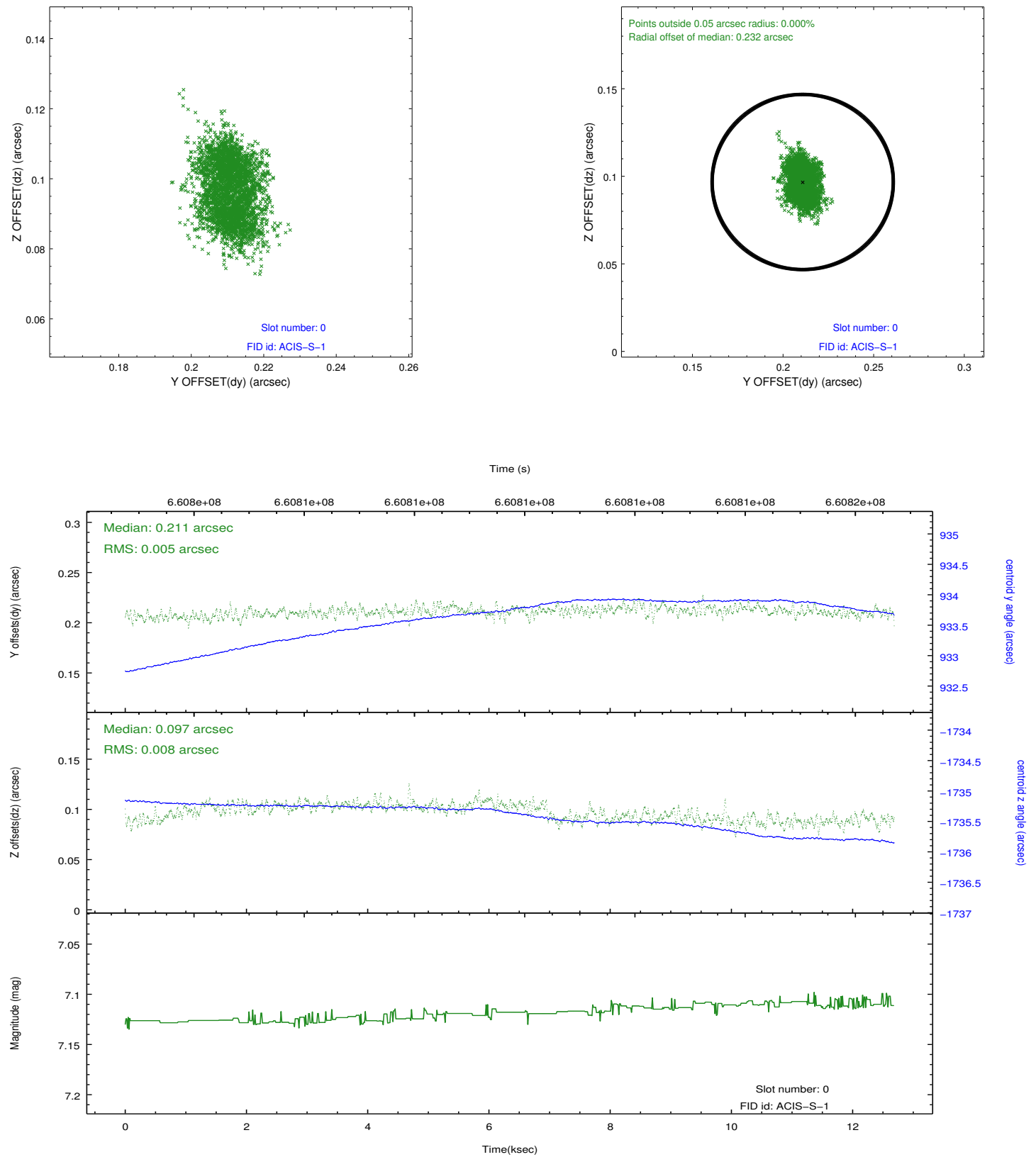


2.4.5 Slot 7

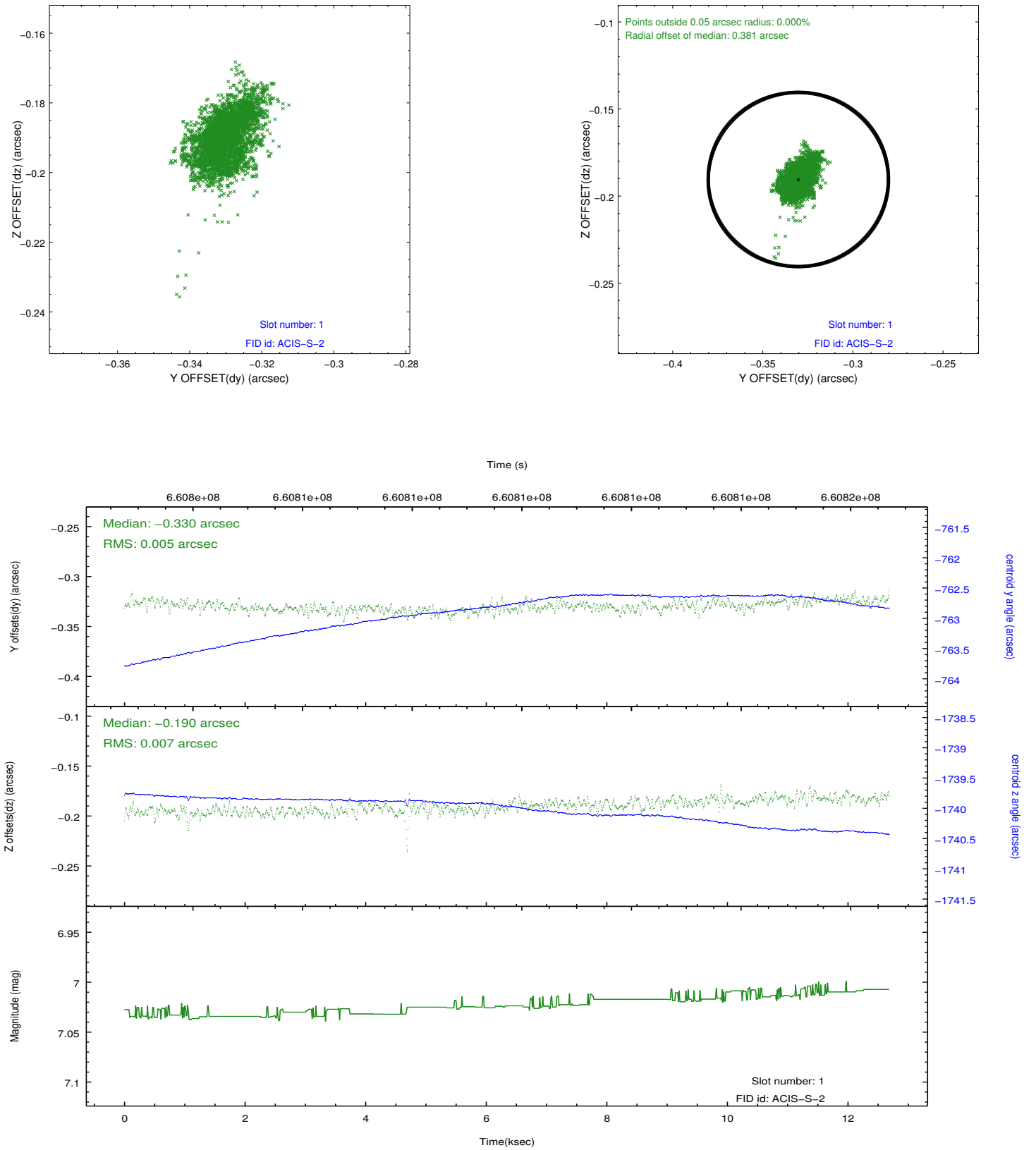


2.5 FID Slots

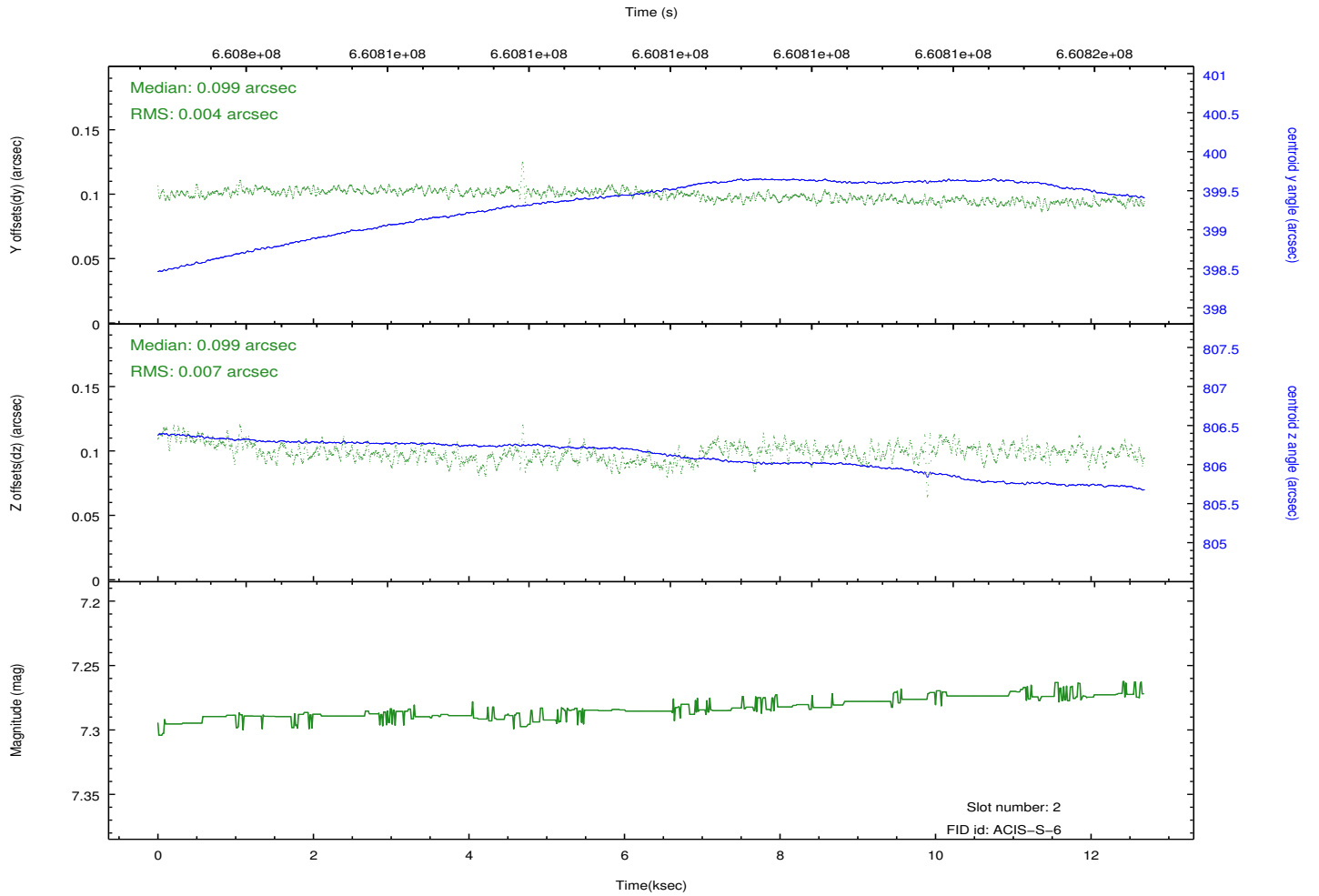
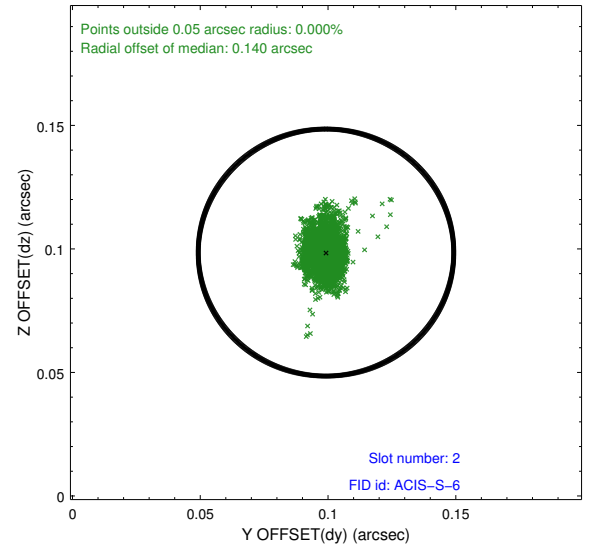
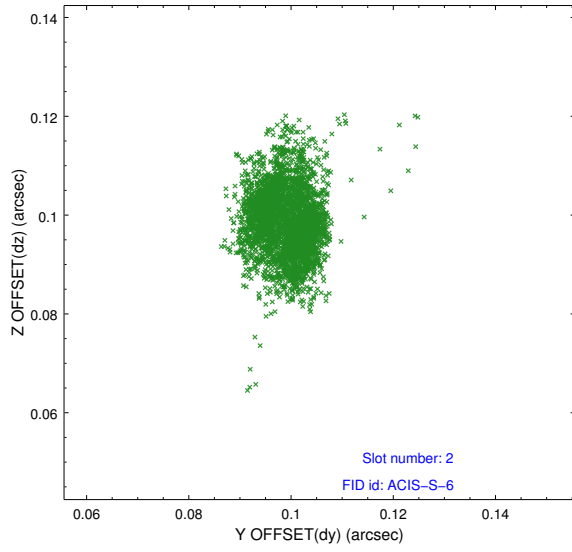
2.5.1 Slot 0



2.5.2 Slot 1



2.5.3 Slot 2



A Summary

A.1 Status

V&V Scientist	Jen Lauer
V&V Date (YYYY-MM-DD)	2018.12.10
V&V Edition	1
V&V Disposition and Status	OK
V&V Charge Time	12.569199250698

A.2 Comments

Monitor constraint met.