

V&V Reference Report

L2 ASCDS Version : 10.8

Observation 22075 - L2 Version 2
Chandra X-Ray Center

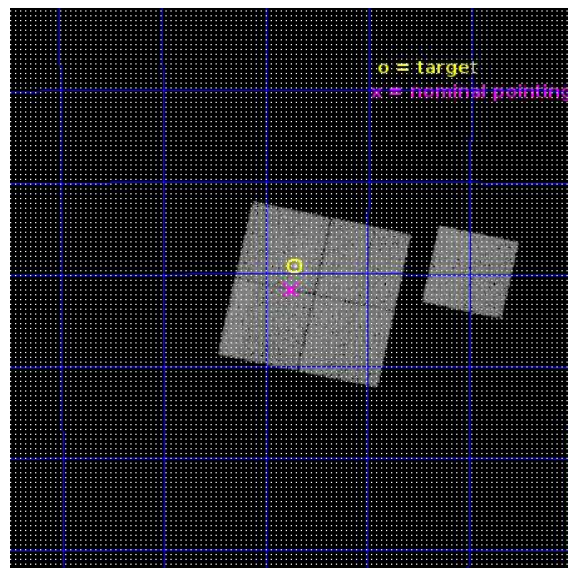
L2 Processing Date : Jun 20 2019

Contents

1	Front	2
2	OBI	3
2.1	OBI	3
2.1.1	Images	3
2.1.2	Bias	3
2.1.3	Parameters	4
2.1.4	Events	4
2.2	Compared Parameters	5
2.3	Aspect	6
2.4	Star Slots	9
2.4.1	Slot 3	9
2.4.2	Slot 4	10
2.4.3	Slot 5	11
2.4.4	Slot 6	12
2.4.5	Slot 7	13
2.5	FID Slots	14
2.5.1	Slot 0	14
2.5.2	Slot 1	15
2.5.3	Slot 2	16
A	Summary	17
A.1	Status	17
A.2	Comments	17

1 Front

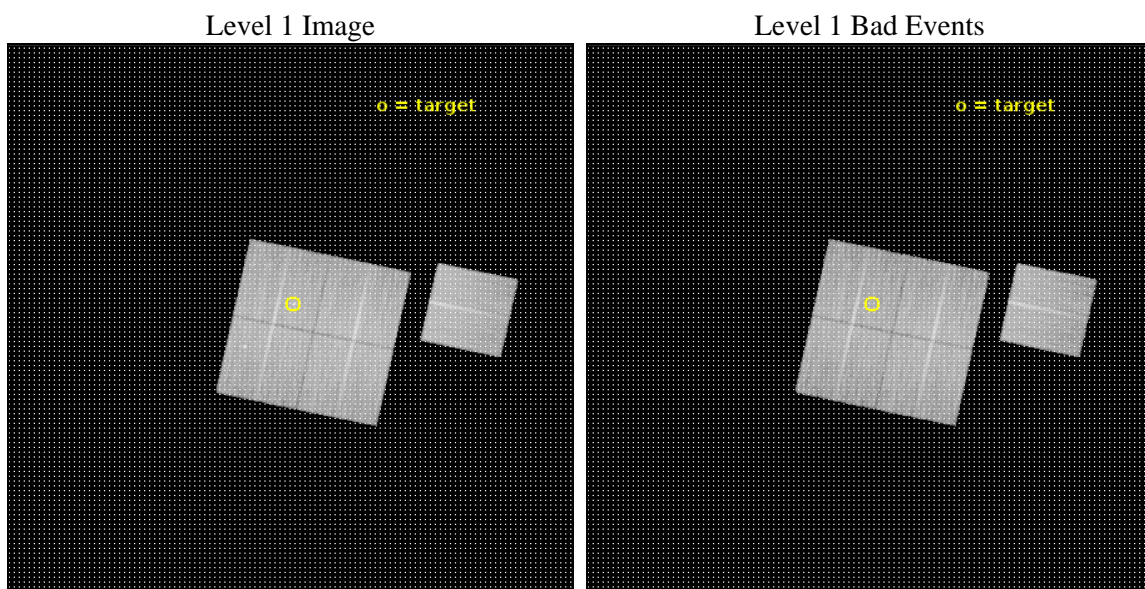
seq_num	503000	Sequence number
obs_id	22075	Observation id
title	The Answer is Blowing in the Wind: Jet Sweepback in Three PWNe	Pro
observer	Roger Romani	Principal investigator
object	PSR J1709-4429	Source name
dtcycle	0	
cycle	P	events from which exps? Prim/Second/Both
ra_targ	257.42835	Observer's specified target RA [deg]
dec_targ	-44.4853	Observer's specified target Dec [deg]
ra_nom	257.43647494478	Nominal RA [deg]
dec_nom	-44.528809135944	Nominal Dec [deg]
roll_nom	102.21437891767	Nominal Roll [deg]
revision	2	Processing version of data
ontime	24917.759221315	Sum of GTIs [s]
livetime	24592.190352901	Livetime [s]
ontime0	24917.759221315	Sum of GTIs [s]
ontime1	24902.054280281	Sum of GTIs [s]
ontime2	24911.47716105	Sum of GTIs [s]
ontime3	24914.618191481	Sum of GTIs [s]
ontime6	24917.759161592	Sum of GTIs [s]
l2events	110145	Number of level 2 events



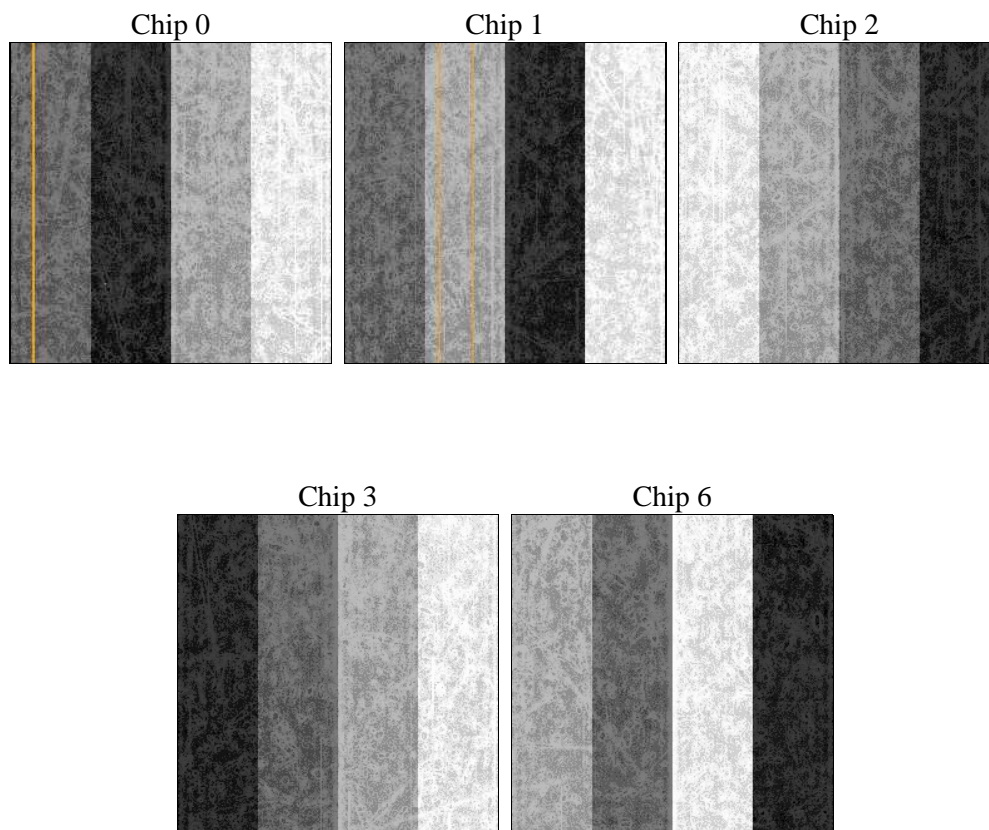
2 OBI

2.1 OBI

2.1.1 Images



2.1.2 Bias



2.1.3 Parameters

obi_num	0	Obi number	sched_exp_time	24856.000000	[s] Scheduled observation exposure time
ascdsver	10.8	Processing system revision	ontime	24917.759221315	Sum of GTIs [s]
caldbver	4.8.3	 	ontime0	24917.759221315	Sum of GTIs [s]
date	2019-06-20T19:58:46	Date and time of file creation	ontime1	24902.054280281	Sum of GTIs [s]
revision	2	Processing version of data	ontime2	24911.47716105	Sum of GTIs [s]
			ontime3	24914.618191481	Sum of GTIs [s]
			ontime6	24917.759161592	Sum of GTIs [s]
			l1events	940039	Number of level 1 events

2.1.4 Events

	ccd 0	ccd 1	ccd 2	ccd 3	ccd 6
level 1 events	179923	181692	196861	188313	193250
rejected events	151497	154581	170386	165500	168793
rejected %	84%	85%	86%	87%	87%

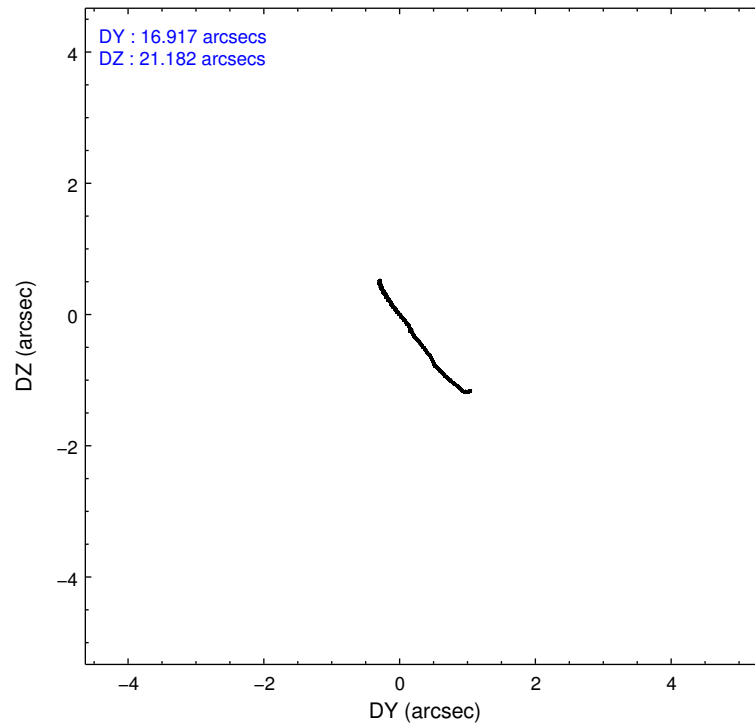
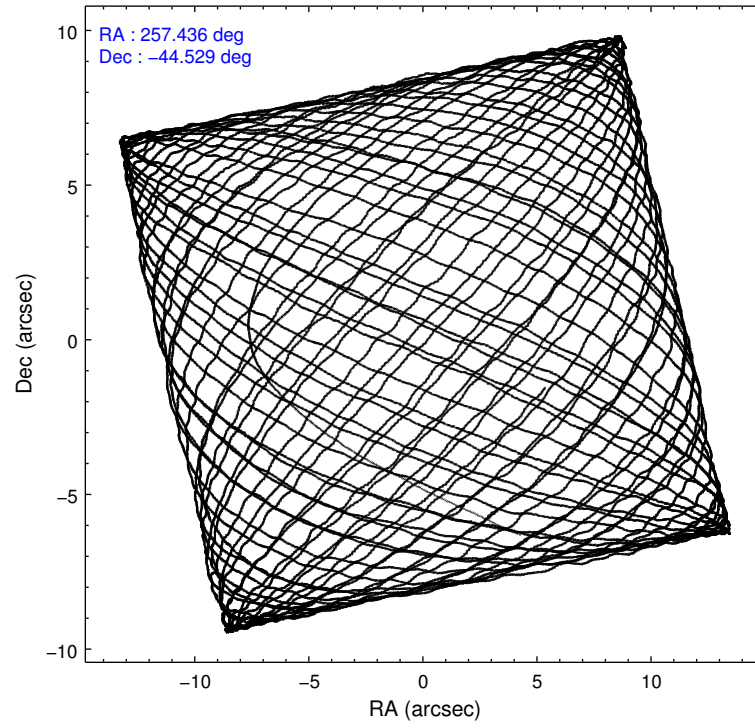
	ccd 0	ccd 1	ccd 2	ccd 3	ccd 6
grade 0 events	12723	10670	11707	9331	9469
	7%	5%	5%	4%	4%
grade 1 events	129	117	155	142	101
	0%	0%	0%	0%	0%
grade 2 events	6190	6468	5895	4798	5377
	3%	3%	2%	2%	2%
grade 3 events	2446	2324	2300	2146	2128
	1%	1%	1%	1%	1%
grade 4 events	2300	2267	2322	2207	2201
	1%	1%	1%	1%	1%
grade 5 events	8136	8551	7889	9224	8718
	4%	4%	4%	4%	4%
grade 6 events	4776	5386	4256	4338	5287
	2%	2%	2%	2%	2%
grade 7 events	143223	145909	162337	156127	159969
	79%	80%	82%	82%	82%

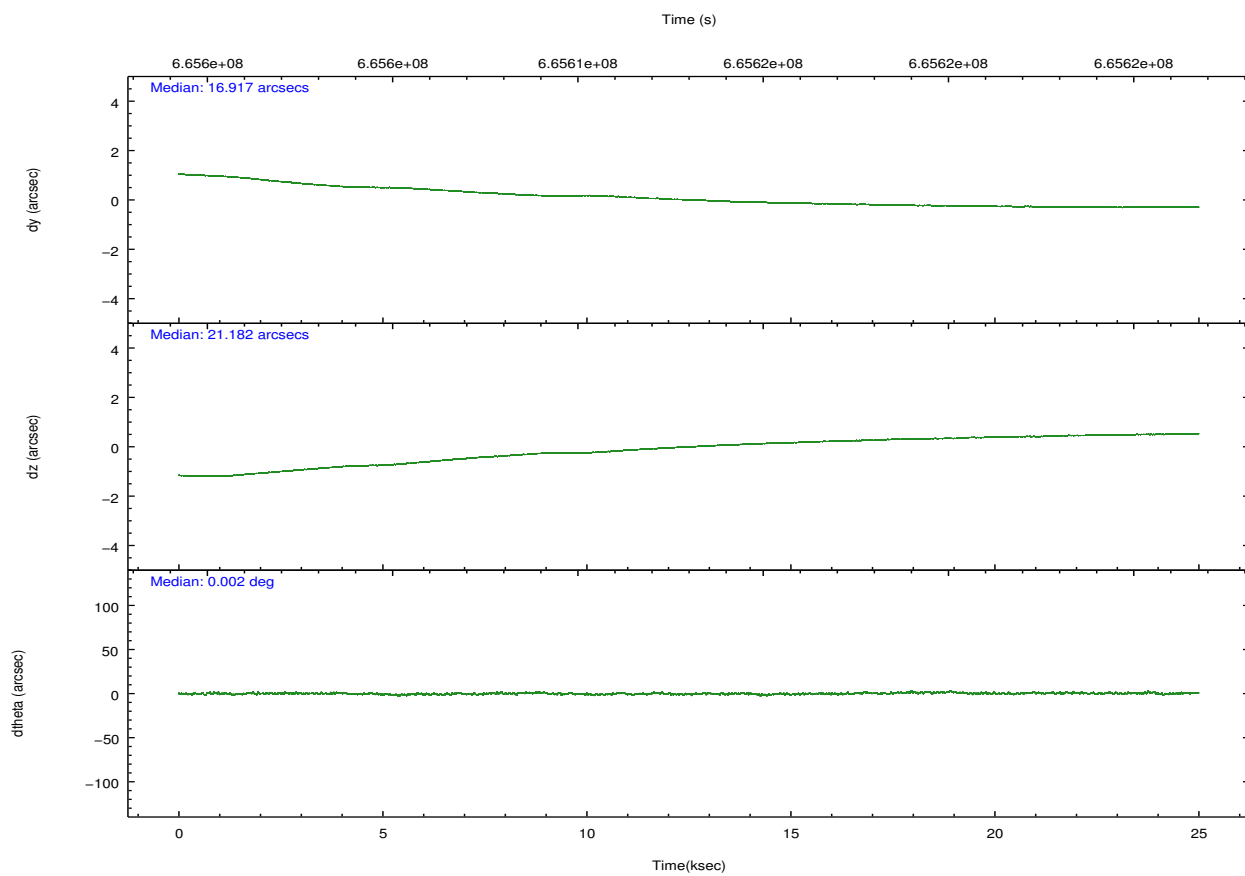
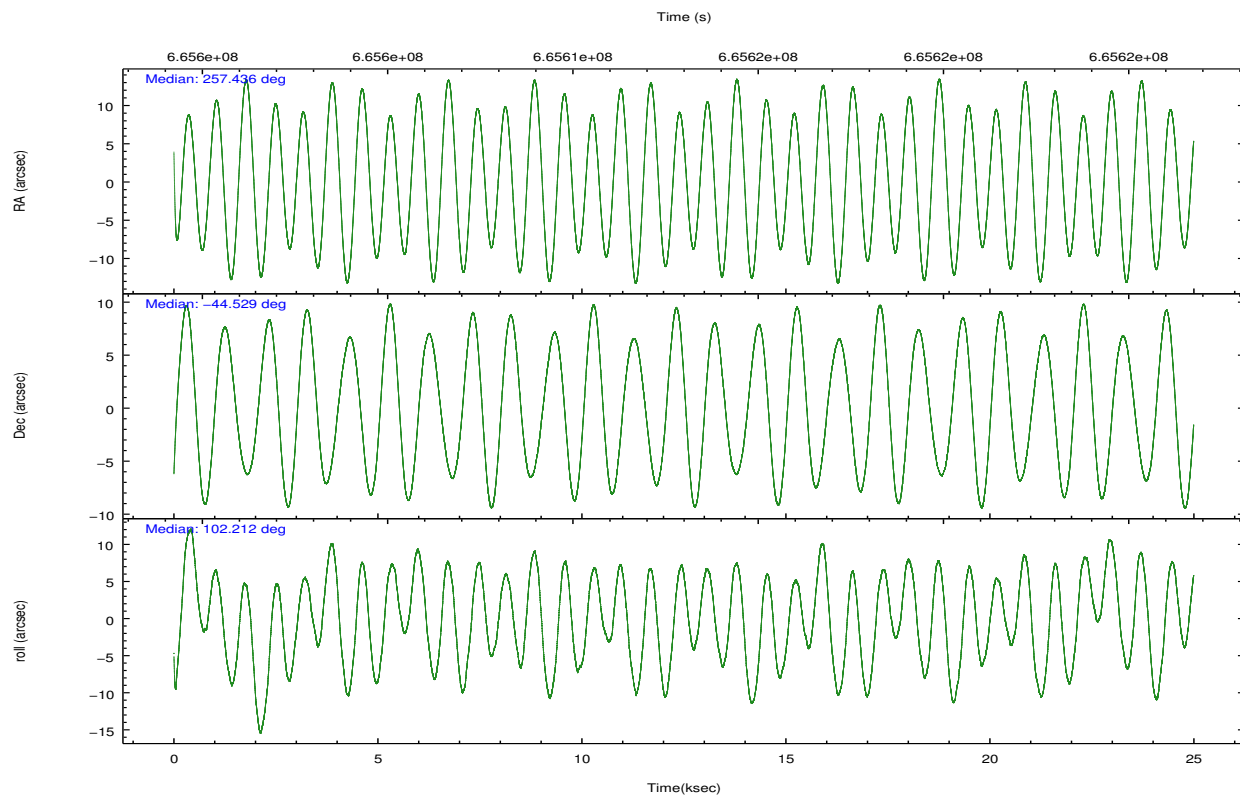
2.2 Compared Parameters

Parameter	Planned	Actual
Instrument	ACIS	ACIS
Detector	ACIS-01236	ACIS-01236
Grating	NONE	NONE
Data mode	VFAINT	VFAINT
Observation mode	POINTING	POINTING
[deg] Pointing RA	257.462611	257.4364749447809
[deg] Pointing Dec	-44.549181	-44.52880913594428
[deg] Pointing Roll	102.024032	102.2143789176674
[mm] SIM focus pos	-0.782348	-0.7809083437167272
[mm] SIM defocus	0	0.001439871863259334
[mm] SIM translation stage pos	-242.952463	-242.9608019050444
[mm] SIM translation stage offset	9.359999999999999	9.36834890211469
[s] Observation start time (MET)	665600650.184000	665599306.61101
Observation start date	2019-02-03T17:03:01	2019-02-03T16:41:46
[s] Observation end time (MET)	665625506.184000	665626629.52514
Observation end date	2019-02-03T23:57:17	2019-02-04T00:17:09
Read mode	TIMED	TIMED

Parameter	Planned	Actual
Obspar format version number	7	7
Obspar file type	PREDICTED	ACTUAL
Obspar update status	NONE	UPDATED
CCD I0 on	Y	Y
CCD I1 on	O1	Y
CCD I2 on	Y	Y
CCD I3 on	Y	Y
CCD S0 on	N	N
CCD S1 on	N	N
CCD S2 on	O2	Y
CCD S3 on	N	N
CCD S4 on	N	N
CCD S5 on	N	N
Number of optional ACIS chips dropped	0	0
On-chip summing requested	N	N
Subarray requested	NONE	NONE
Alternating exposures requested	N	N
[s] Primary exposure time	0.000000	3.1

2.3 Aspect



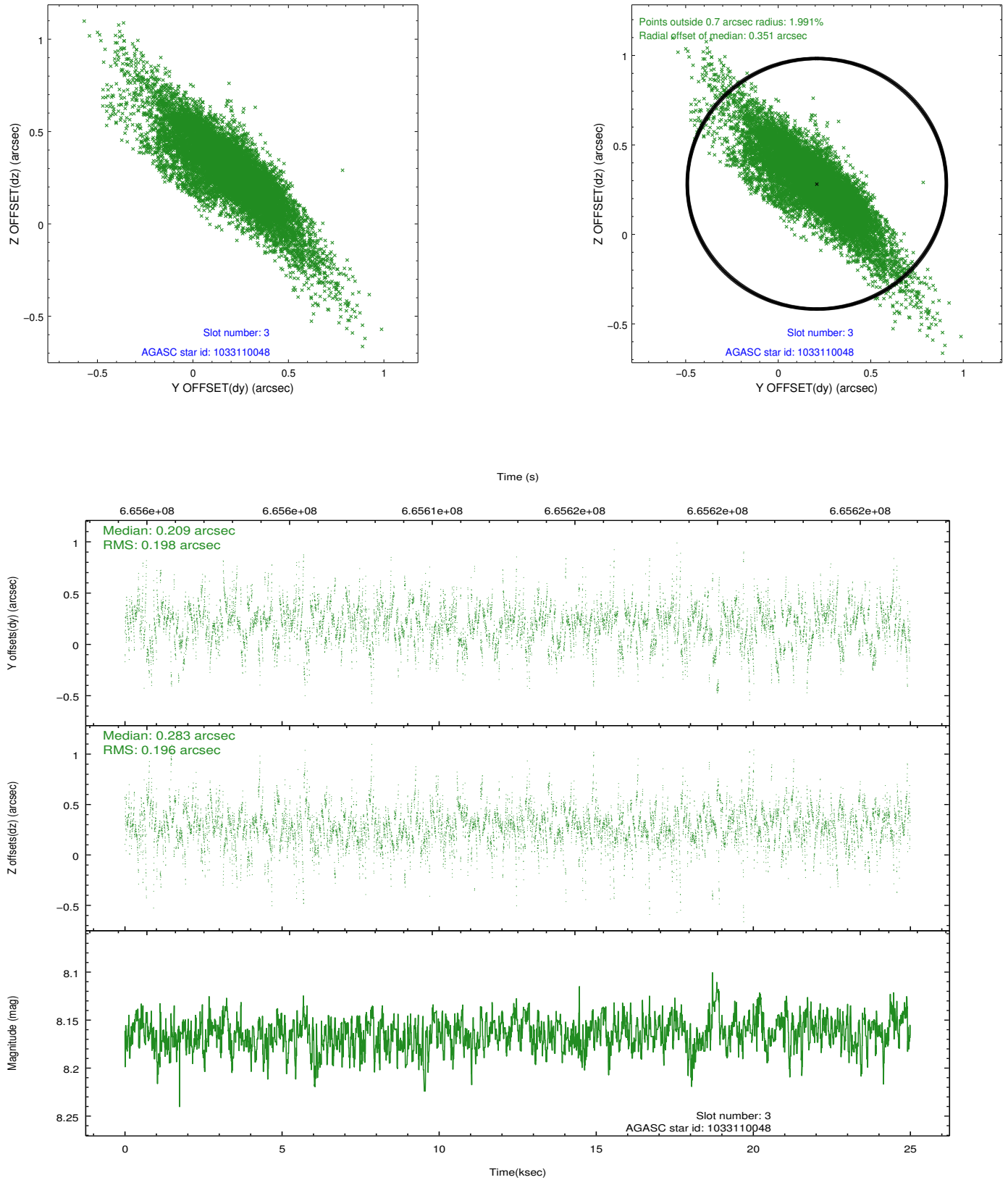


Slot Statistics

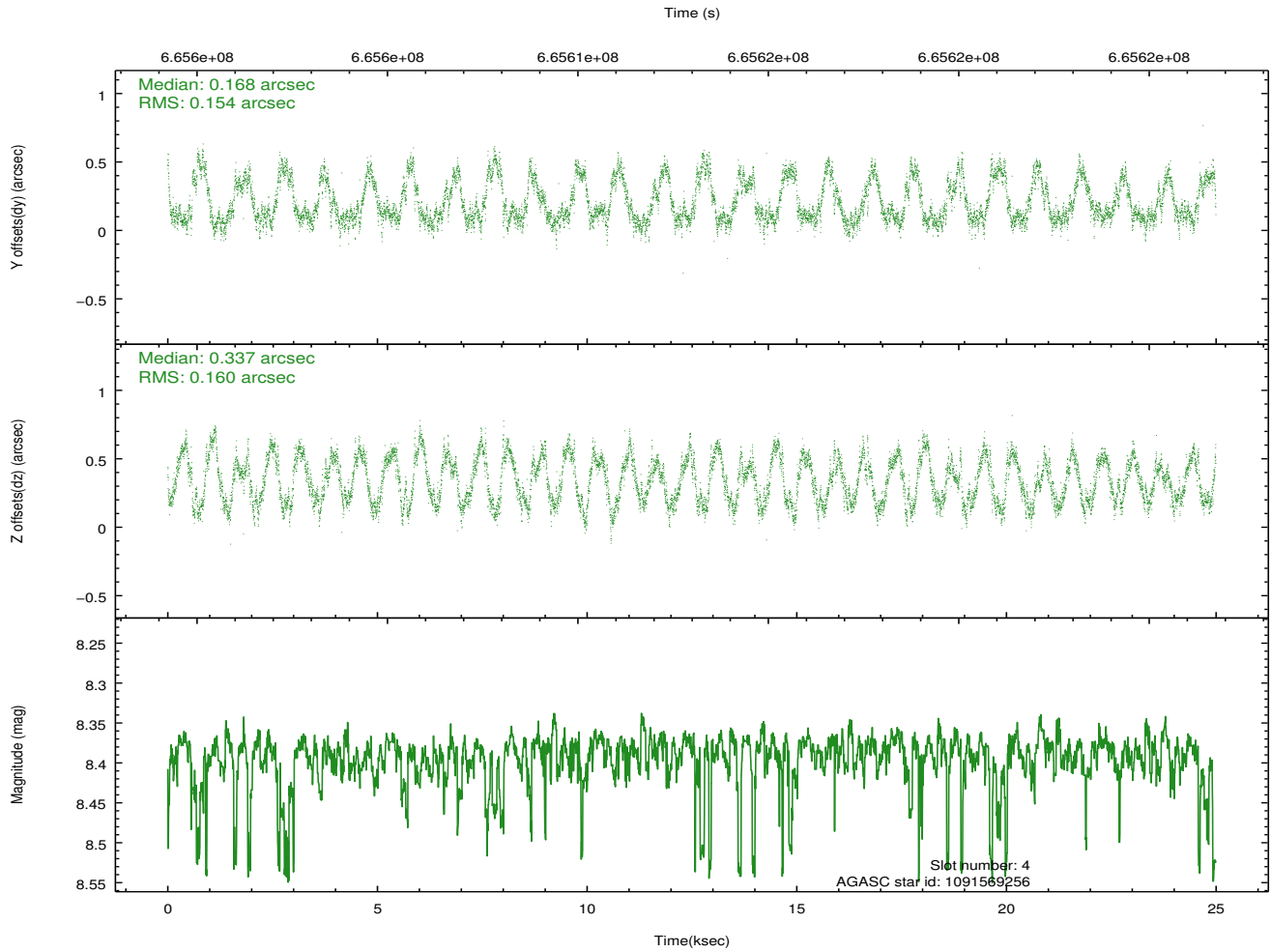
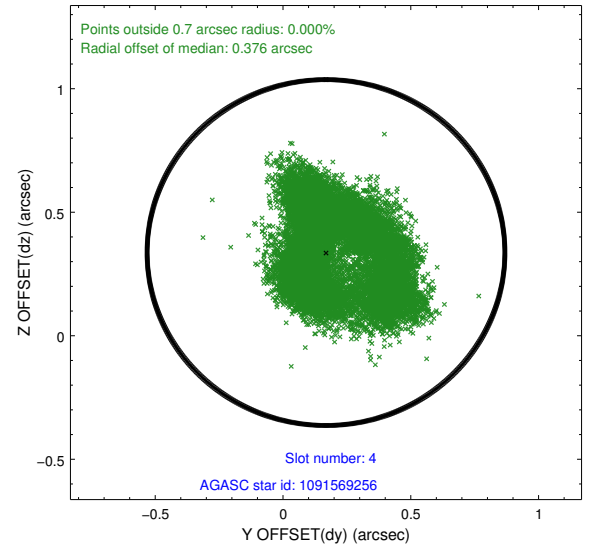
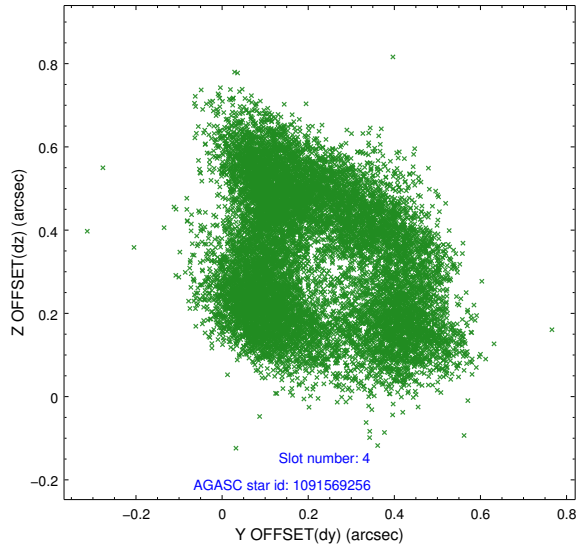
pt	status	used	id	mag	n_pts	frac_pts	med_dy	med_dz	dr1	dr2	ra	dec	mean_y	mea
0	FID		ACIS-I-2	7.06	6096	1.000	-0.123	-0.133	0.020	0.036	0.000000	0.000000	-771.31	-659
1	FID		ACIS-I-3	7.34	6095	1.000	-0.000	0.088	0.022	0.052	0.000000	0.000000	39.78	-785
2	FID		ACIS-I-6	7.10	6097	1.000	0.034	0.108	0.023	0.045	0.000000	0.000000	388.40	1889
3	GUIDE	used	1033110048	8.16	12156	1.000	0.209	0.283	0.262	0.550	258.190525	-43.756216	2389.98	-2444
4	GUIDE	used	1091569256	8.39	12190	1.000	0.168	0.337	0.241	0.356	257.146819	-45.037377	-1552.95	1151
5	GUIDE	used	1091578128	8.57	12179	1.000	0.234	0.360	0.107	0.189	257.198938	-45.154577	-1993.46	1108
6	GUIDE	used	1033000208	7.77	12193	1.000	-0.345	-0.599	0.112	0.186	256.502750	-44.372681	1121.28	2285
7	GUIDE	used	1032980048	8.57	12179	1.000	-0.306	-0.388	0.201	0.308	256.605534	-44.572067	365.68	2168

2.4 Star Slots

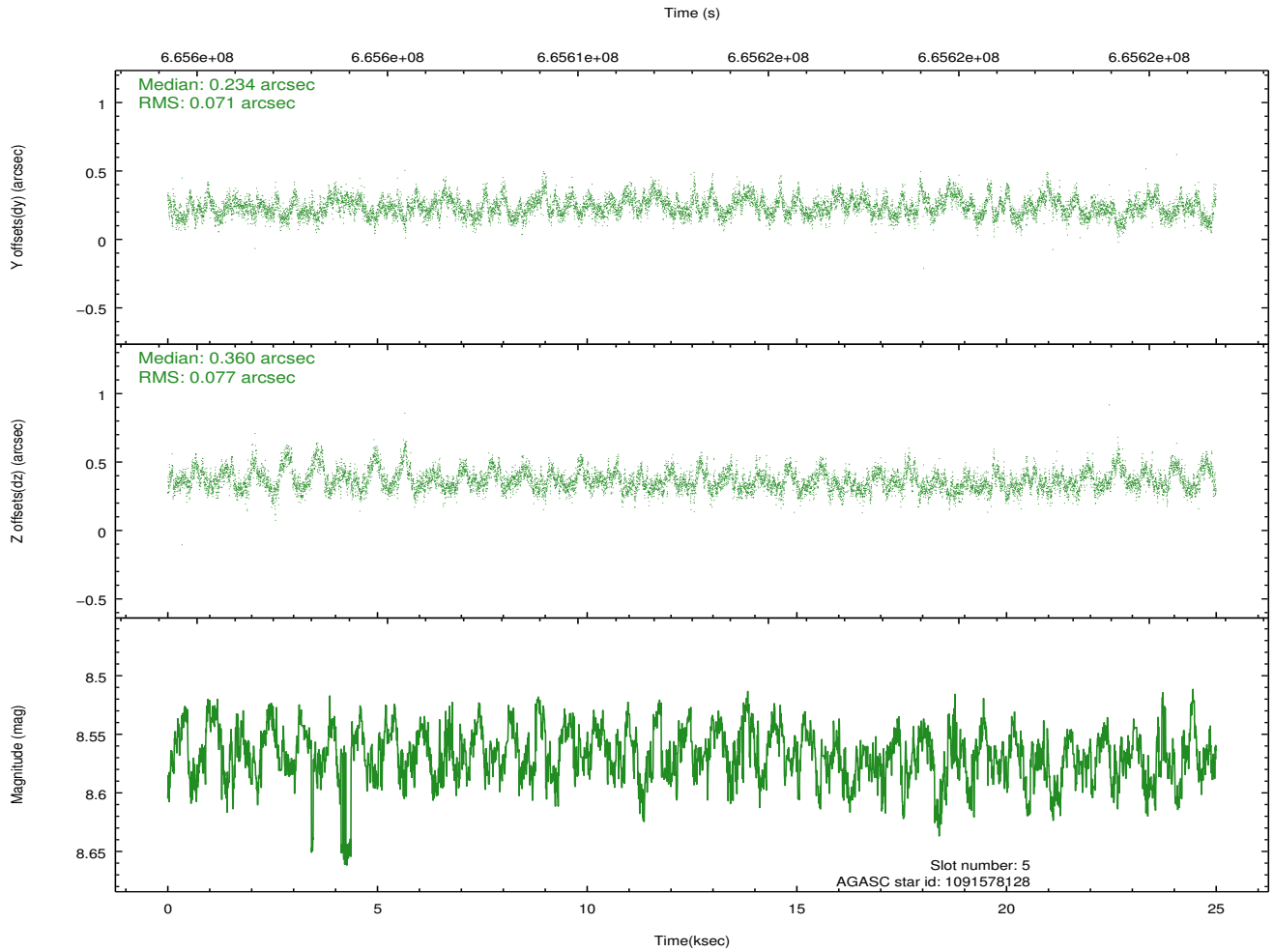
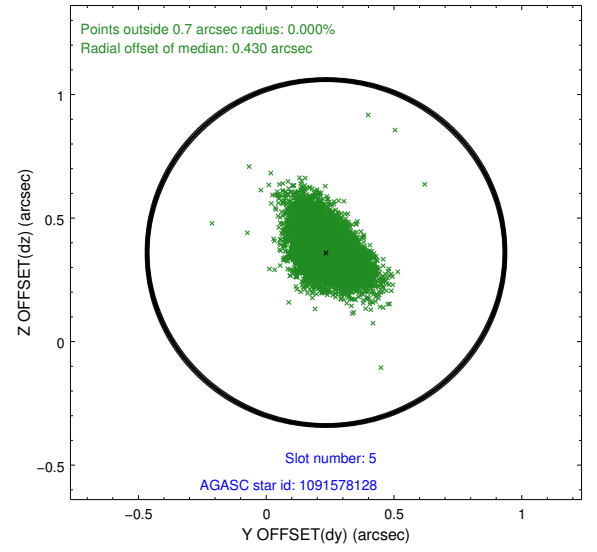
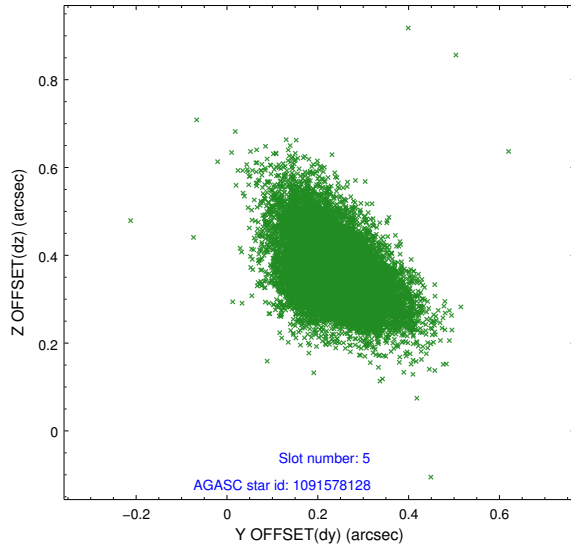
2.4.1 Slot 3



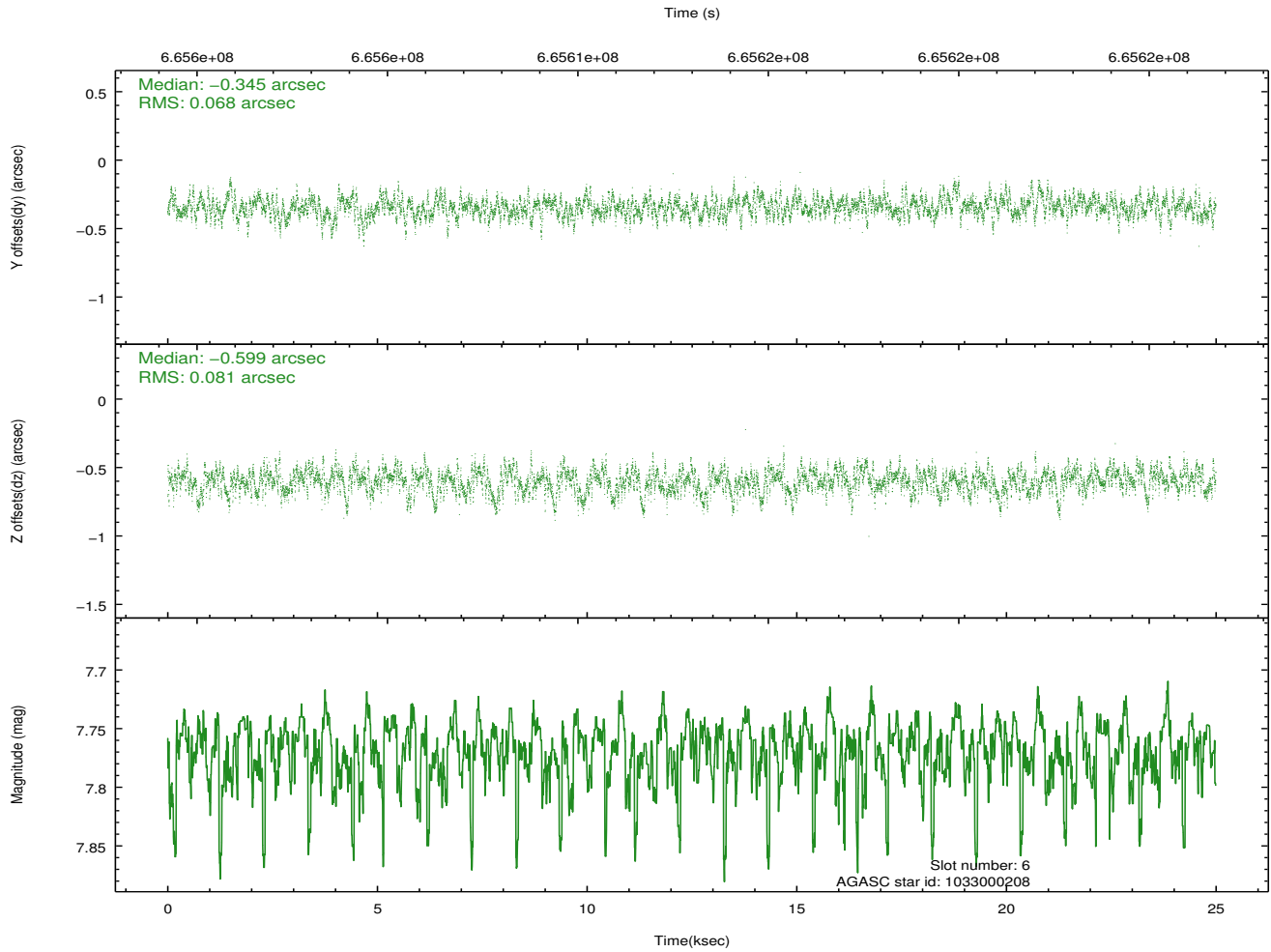
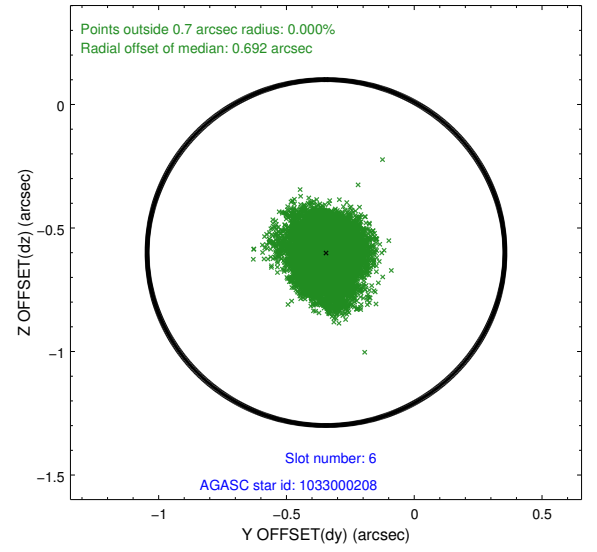
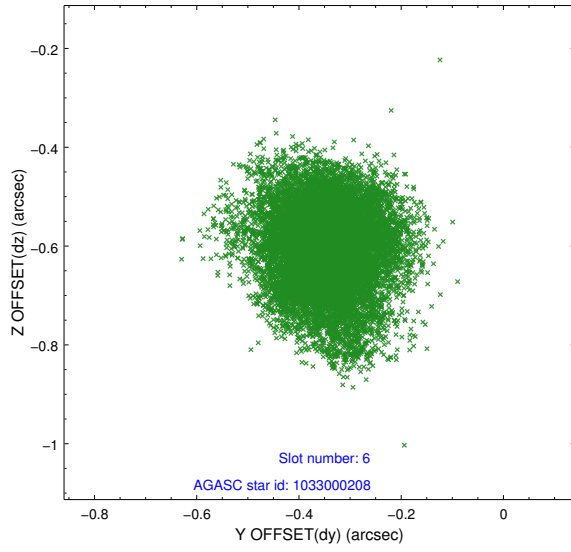
2.4.2 Slot 4



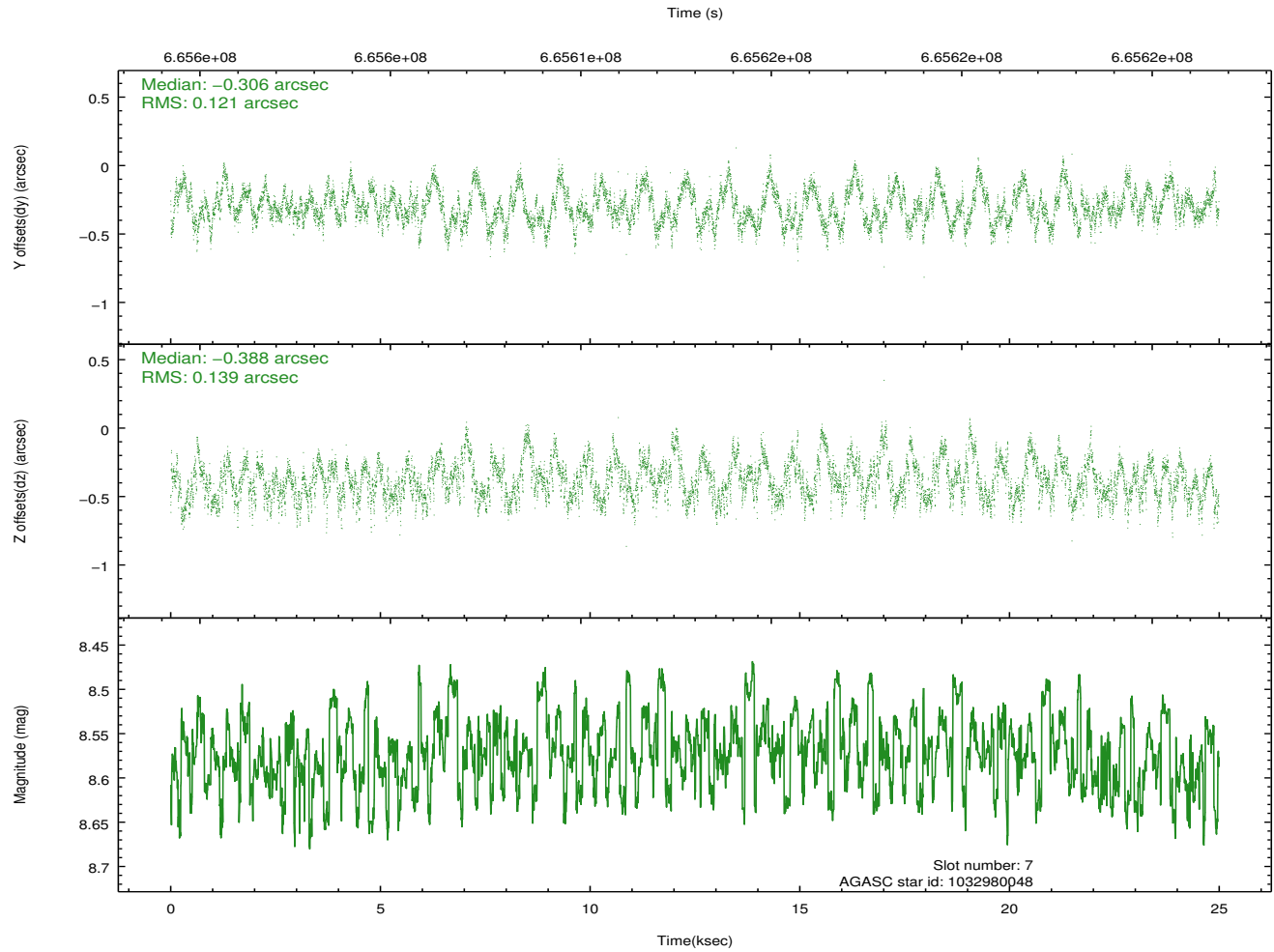
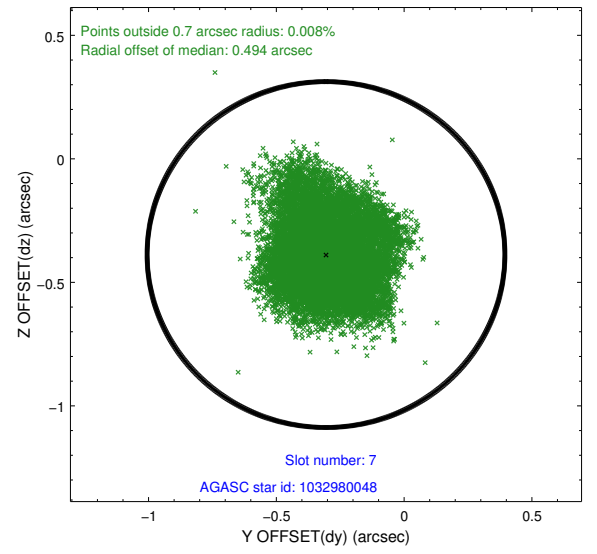
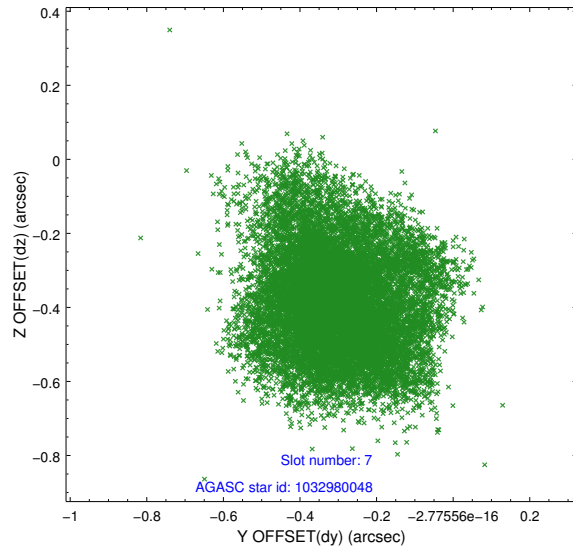
2.4.3 Slot 5



2.4.4 Slot 6

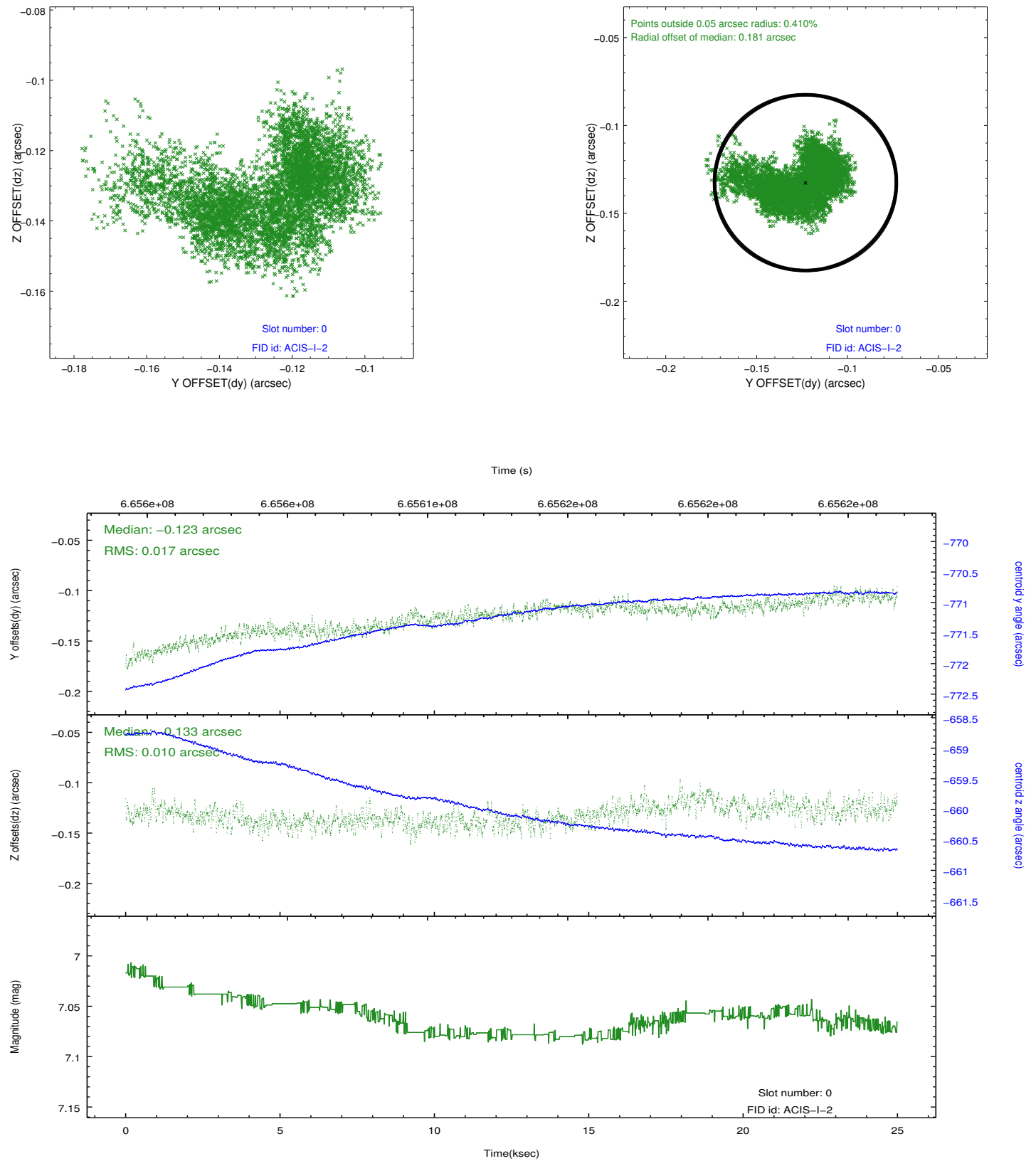


2.4.5 Slot 7

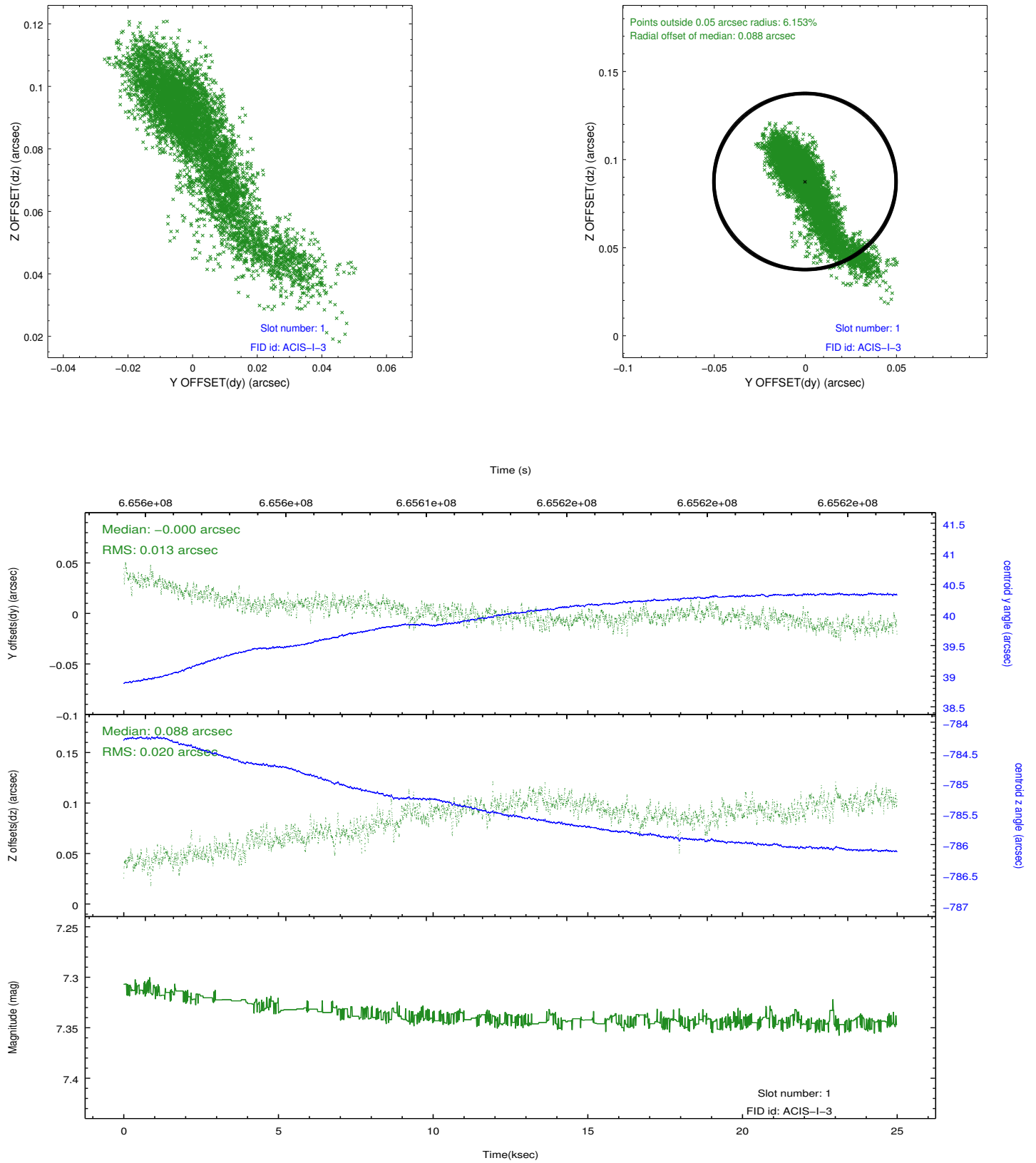


2.5 FID Slots

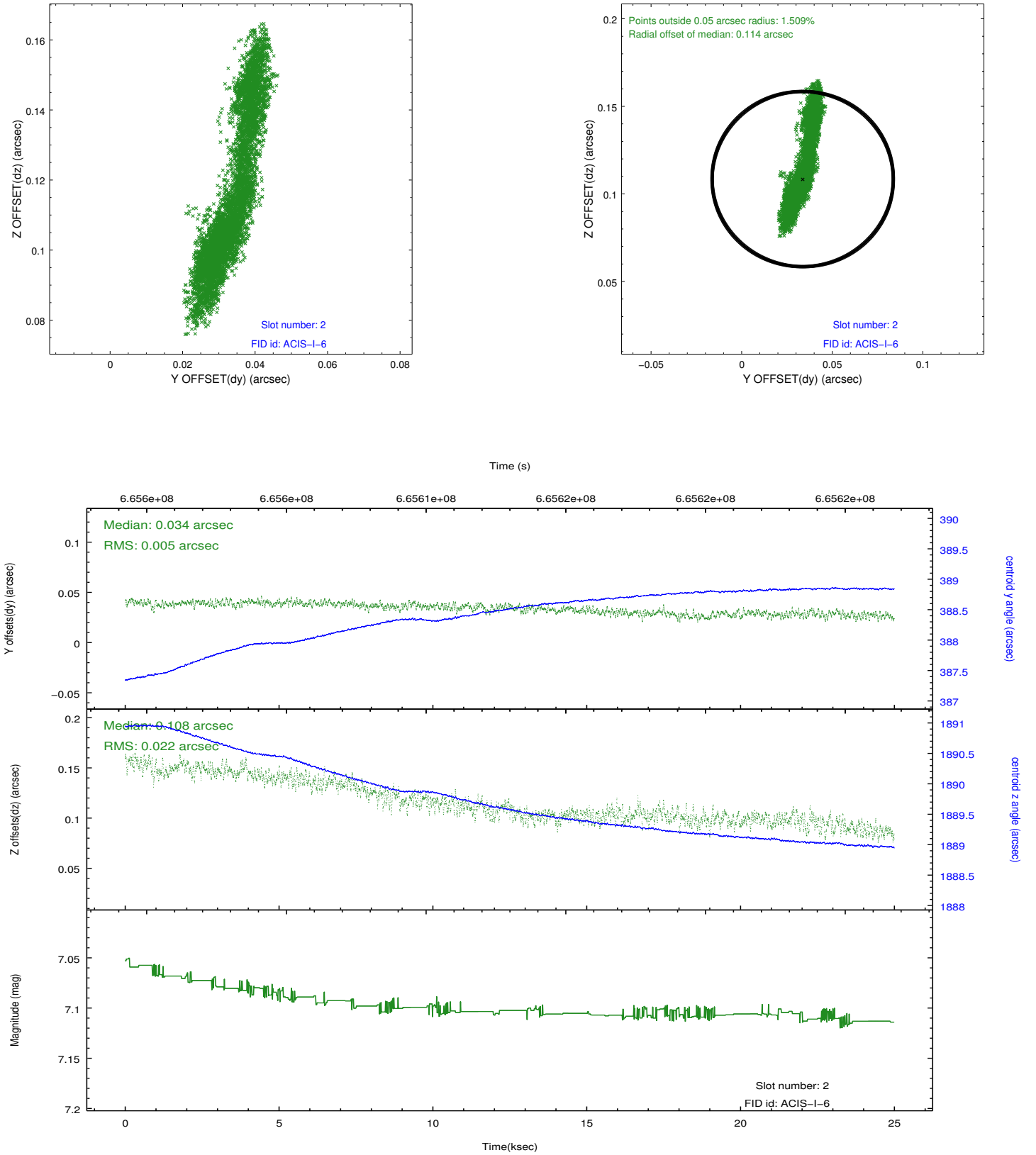
2.5.1 Slot 0



2.5.2 Slot 1



2.5.3 Slot 2



A Summary

A.1 Status

V&V Scientist	Joy Nichols
V&V Date (YYYY-MM-DD)	2019.07.02
V&V Edition	1
V&V Disposition and Status	OK
V&V Charge Time	24.917759221315

A.2 Comments

New processed version to include updated proposal number 19500247.
Data are identical to first processing. ===== Monitor constraint
met.