

V&V Reference Report

L2 ASCDS Version : 10.6

Observation 20118 - L2 Version 1
Chandra X-Ray Center

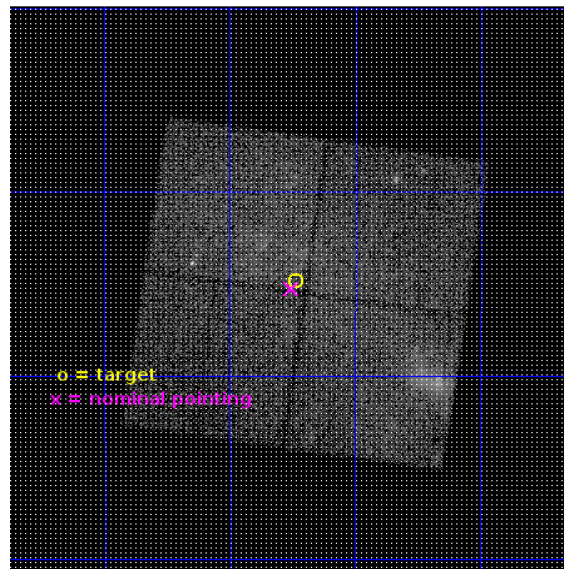
L2 Processing Date : Jul 23 2017

Contents

1	Front	2
2	OBI	3
2.1	OBI	3
2.1.1	Images	3
2.1.2	Bias	3
2.1.3	Parameters	4
2.1.4	Events	4
2.2	Compared Parameters	5
2.3	Aspect	6
2.4	Star Slots	9
2.4.1	Slot 3	9
2.4.2	Slot 4	10
2.4.3	Slot 5	11
2.4.4	Slot 6	12
2.4.5	Slot 7	13
2.5	FID Slots	14
2.5.1	Slot 0	14
2.5.2	Slot 1	15
2.5.3	Slot 2	16
A	Summary	17
A.1	Status	17
A.2	Comments	17

1 Front

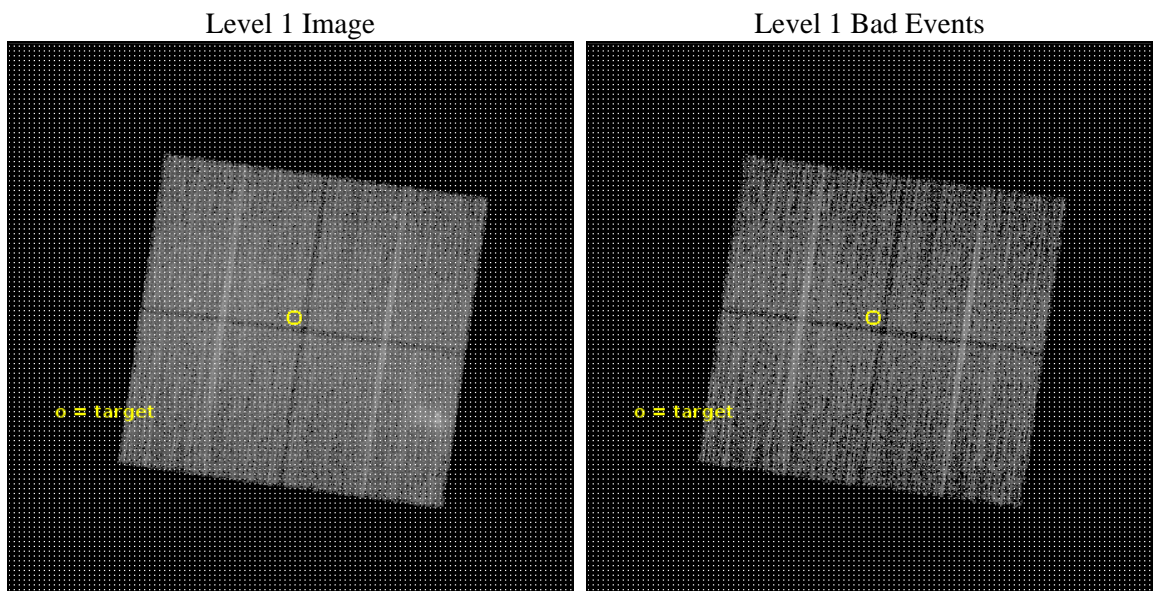
seq_num	901134	Sequence number
obs_id	20118	Observation id
title	Characterizing past outbursts from Sagittarius A*	Proposal title
observer	Ms Maica Clavel	Principal investigator
object	Sgr A complex 1	Source name
dtcycle	0	
cycle	P	events from which exps? Prim/Second/Both
ra_targ	266.55875	Observer's specified target RA [deg]
dec_targ	-28.914583	Observer's specified target Dec [deg]
ra_nom	266.56368276219	Nominal RA [deg]
dec_nom	-28.921254690199	Nominal Dec [deg]
roll_nom	278.21108094992	Nominal Roll [deg]
revision	1	Processing version of data
ontime	14080.200108409	Sum of GTIs [s]
livetime	13896.2319283	Livetime [s]
ontime0	14080.200108409	Sum of GTIs [s]
ontime1	14080.200108409	Sum of GTIs [s]
ontime2	14080.200108409	Sum of GTIs [s]
ontime3	14080.200108409	Sum of GTIs [s]
l2events	97887	Number of level 2 events



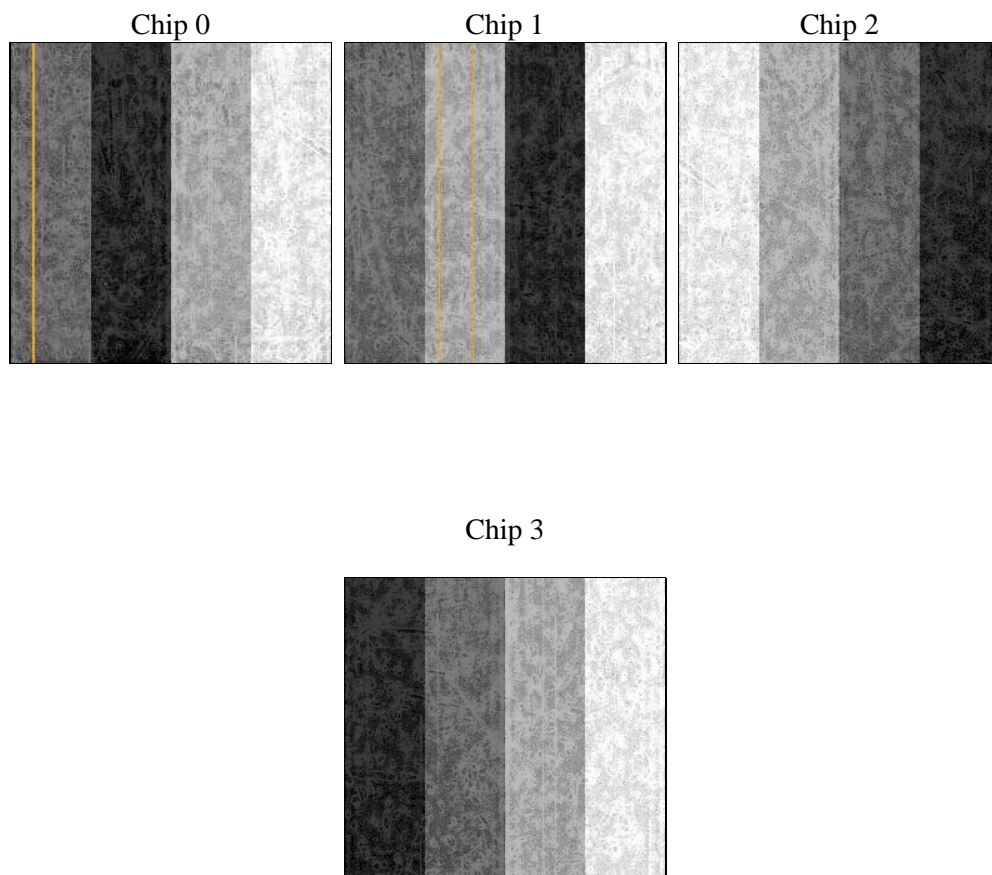
2 OBI

2.1 OBI

2.1.1 Images



2.1.2 Bias



2.1.3 Parameters

obi_num	0	Obi number	sched_exp_time	14000.000000	[s] Scheduled observation exposure time
ascdsver	10.6	Processing system revision	ontime	14080.200108409	Sum of GTIs [s]
caldsver	4.7.5	 	ontime0	14080.200108409	Sum of GTIs [s]
date	2017-07-23T13:35:11	Date and time of file creation	ontime1	14080.200108409	Sum of GTIs [s]
revision	1	Processing version of data	ontime2	14080.200108409	Sum of GTIs [s]
			ontime3	14080.200108409	Sum of GTIs [s]
			l1events	436733	Number of level 1 events

2.1.4 Events

	ccd 0	ccd 1	ccd 2	ccd 3
level 1 events	112995	103399	105571	114768
rejected events	78586	78061	86666	84633
rejected %	69%	75%	82%	73%

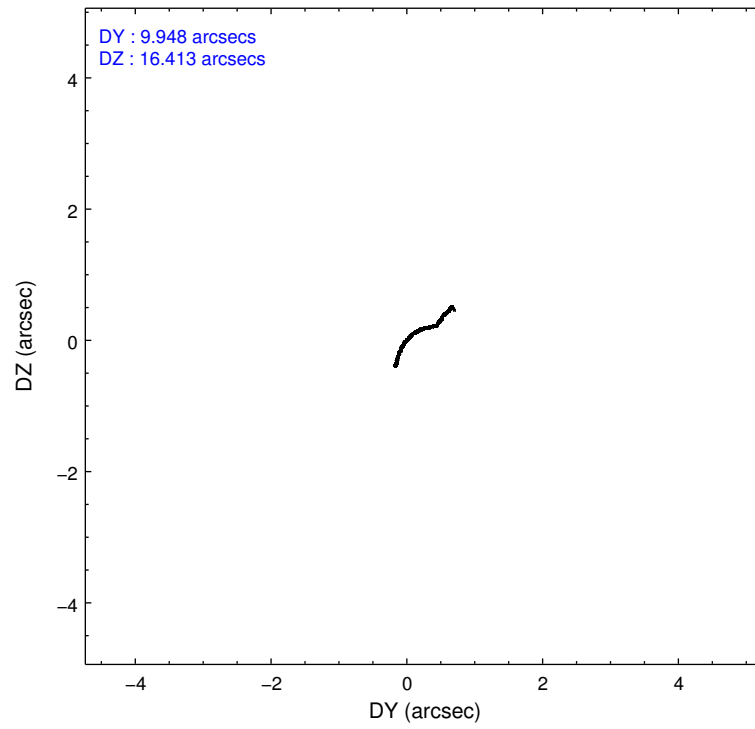
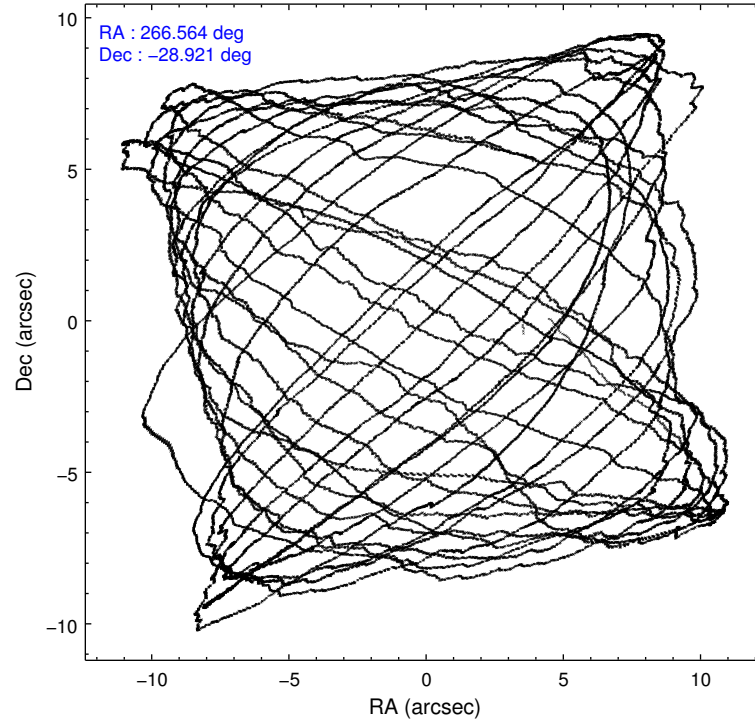
	ccd 0	ccd 1	ccd 2	ccd 3
grade 0 events	19757	13097	9561	17814
	17%	12%	9%	15%
grade 1 events	130	80	107	157
	0%	0%	0%	0%
grade 2 events	6160	5096	3769	4836
	5%	4%	3%	4%
grade 3 events	2274	1740	1447	2000
	2%	1%	1%	1%
grade 4 events	2188	1732	1461	1980
	1%	1%	1%	1%
grade 5 events	4439	4573	4128	4866
	3%	4%	3%	4%
grade 6 events	4044	3688	2679	3519
	3%	3%	2%	3%
grade 7 events	74003	73393	82419	79596
	65%	70%	78%	69%

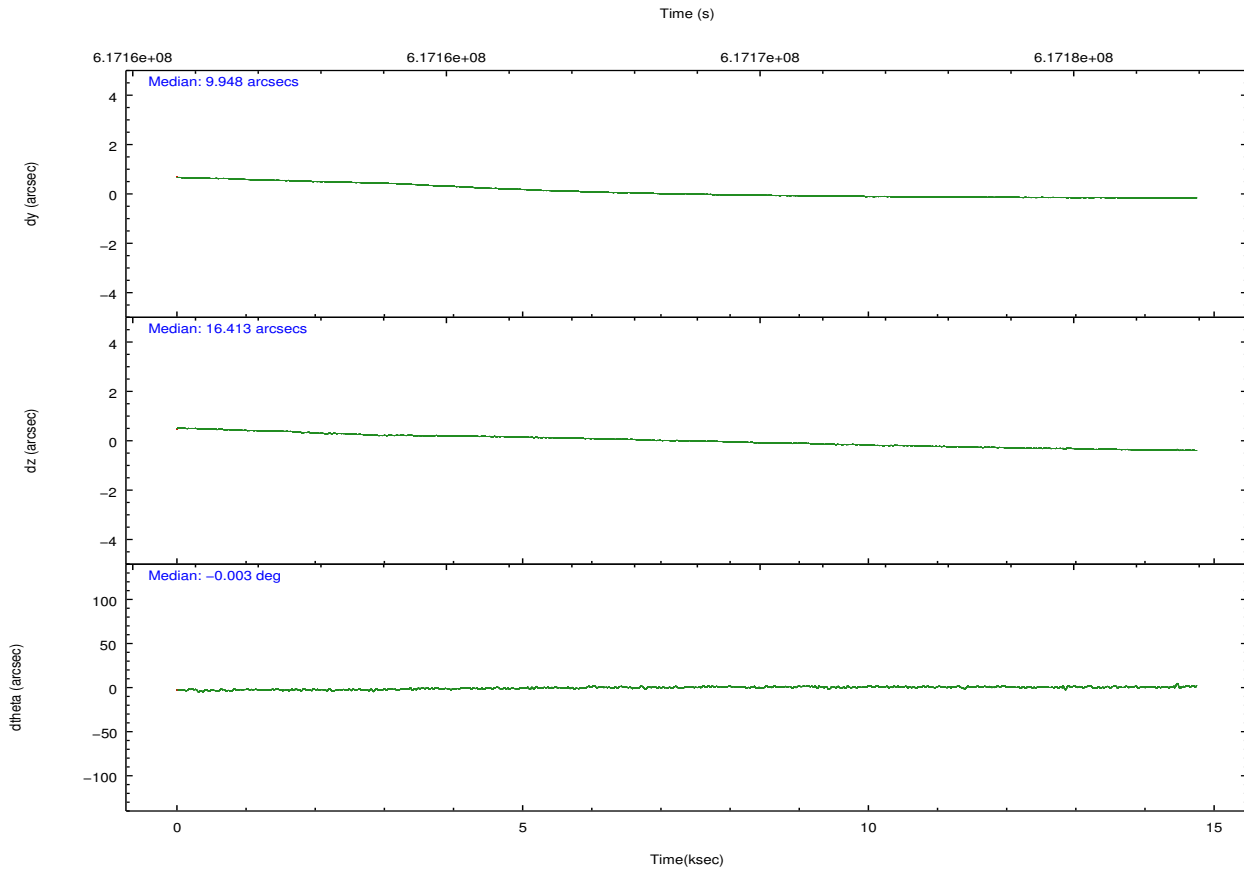
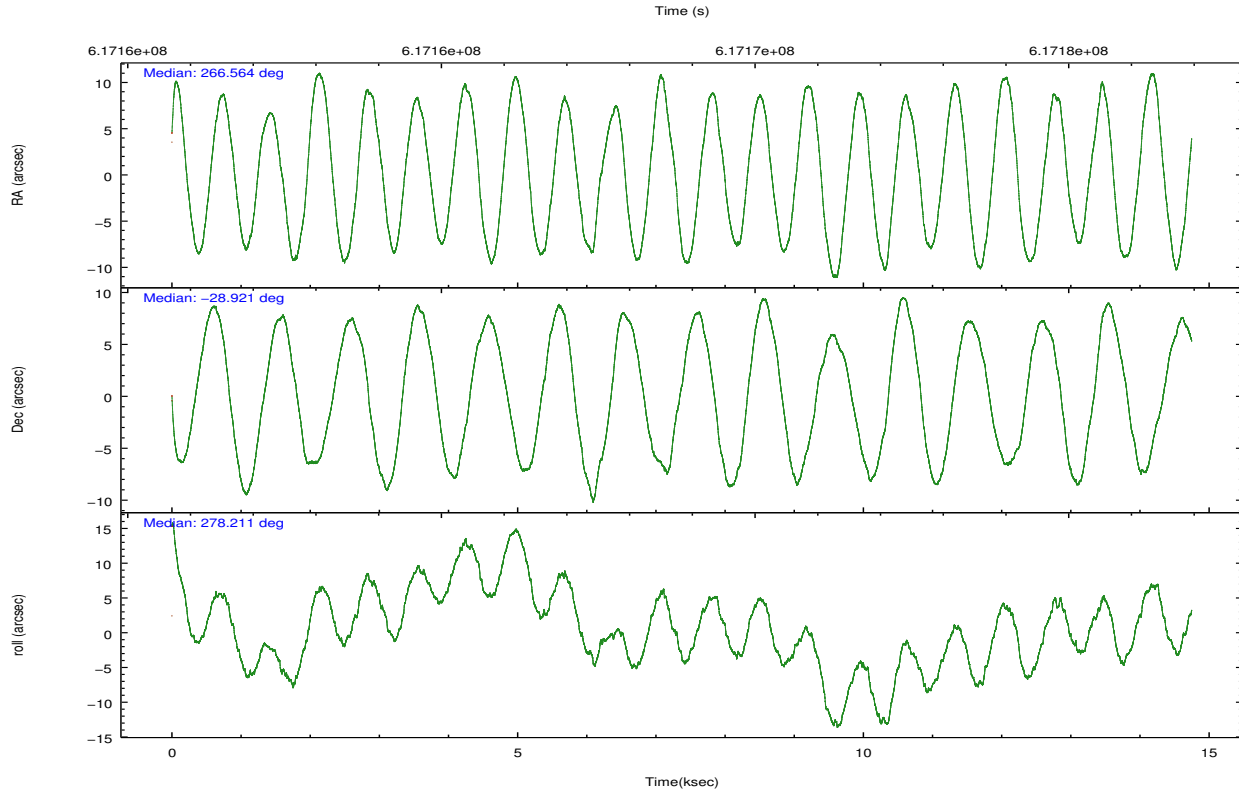
2.2 Compared Parameters

Parameter	Planned	Actual
Instrument	ACIS	ACIS
Detector	ACIS-0123	ACIS-0123
Grating	NONE	NONE
Data mode	FAINT	FAINT
Observation mode	POINTING	POINTING
[deg] Pointing RA	266.544099	266.563682762192
[deg] Pointing Dec	-28.899640	-28.92125469019867
[deg] Pointing Roll	277.992912	278.2110809499229
[s] Window start time (MET)	531187267.184000	531187267.184000
[s] Window stop time (MET)	562723208.184000	562723208.184000
[mm] SIM focus pos	-0.782348	-0.7809083437167272
[mm] SIM defocus	0	0.001439871863259334
[mm] SIM translation stage pos	-233.592463	-233.5874344608287
[mm] SIM translation stage offset	0	-0.005018542100998502
[s] Observation start time (MET)	617162199.184000	617160065.8449399
Observation start date	2017-07-23T01:55:30	2017-07-23T01:21:05
[s] Observation end time (MET)	617176199.184000	617176501.7209001
Observation end date	2017-07-23T05:48:50	2017-07-23T05:55:01
Read mode	TIMED	TIMED

Parameter	Planned	Actual
Obspar format version number	7	7
Obspar file type	PREDICTED	ACTUAL
Obspar update status	NONE	UPDATED
Number of optional ACIS chips dropped	0	0
On-chip summing requested	N	N
Subarray requested	NONE	NONE
Alternating exposures requested	N	N
[s] Primary exposure time	0.000000	3.1

2.3 Aspect



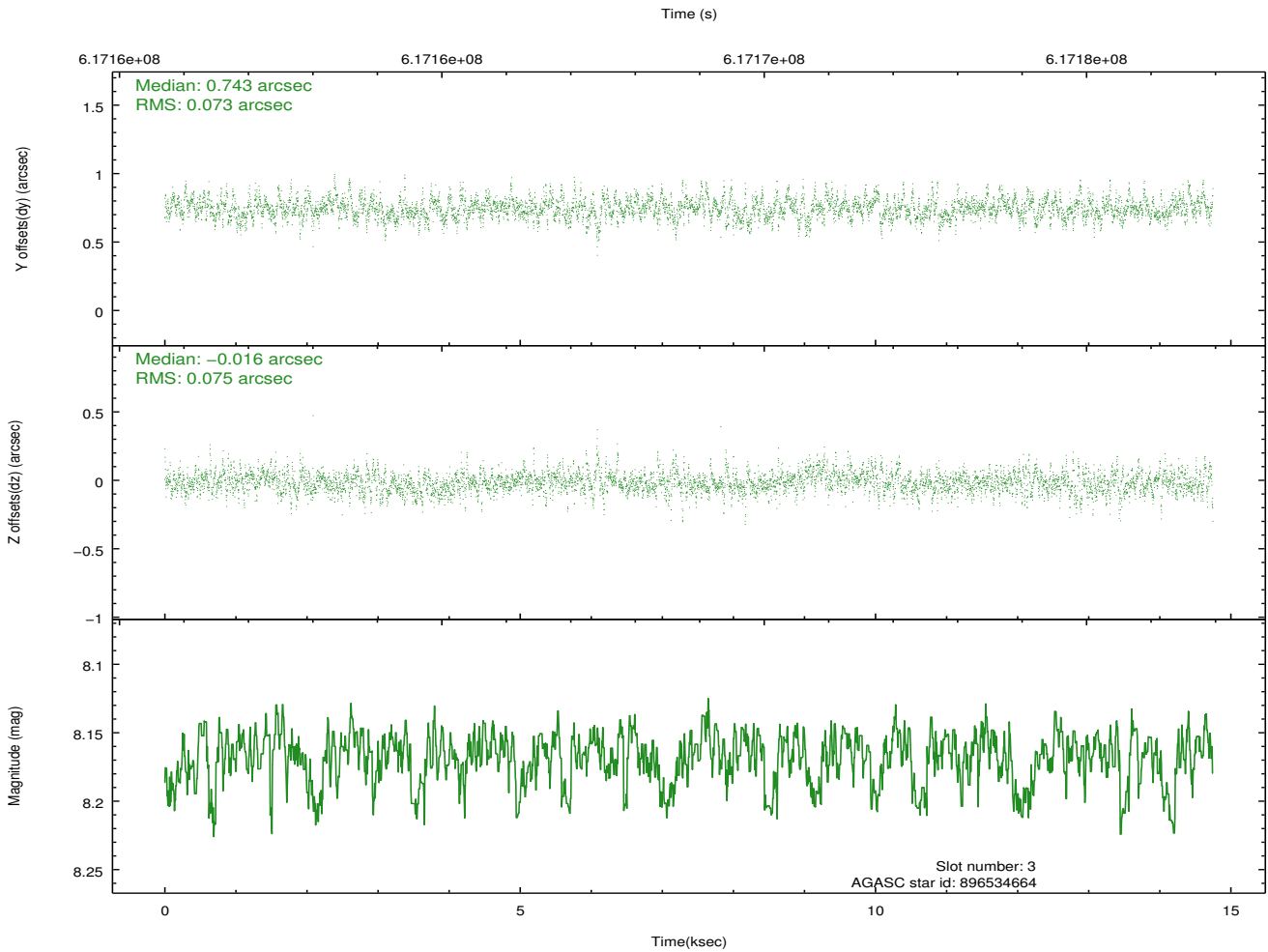
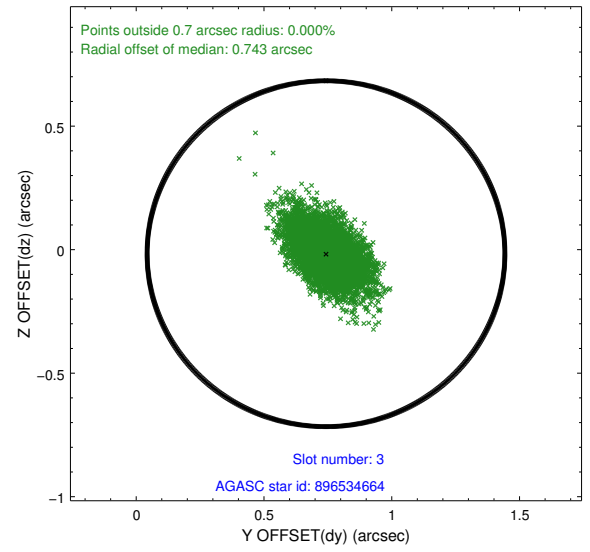
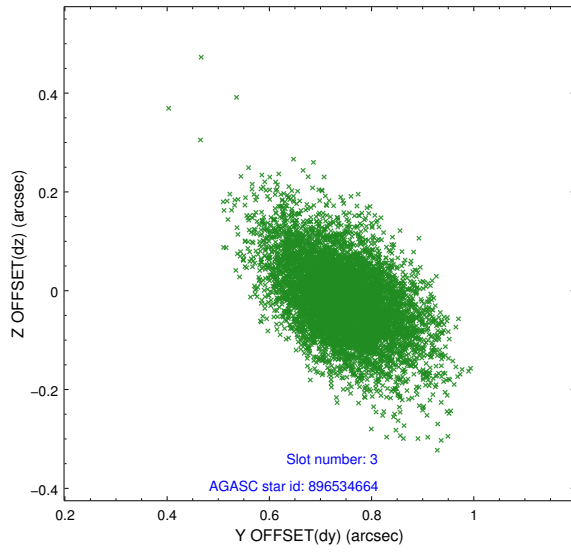


Slot Statistics

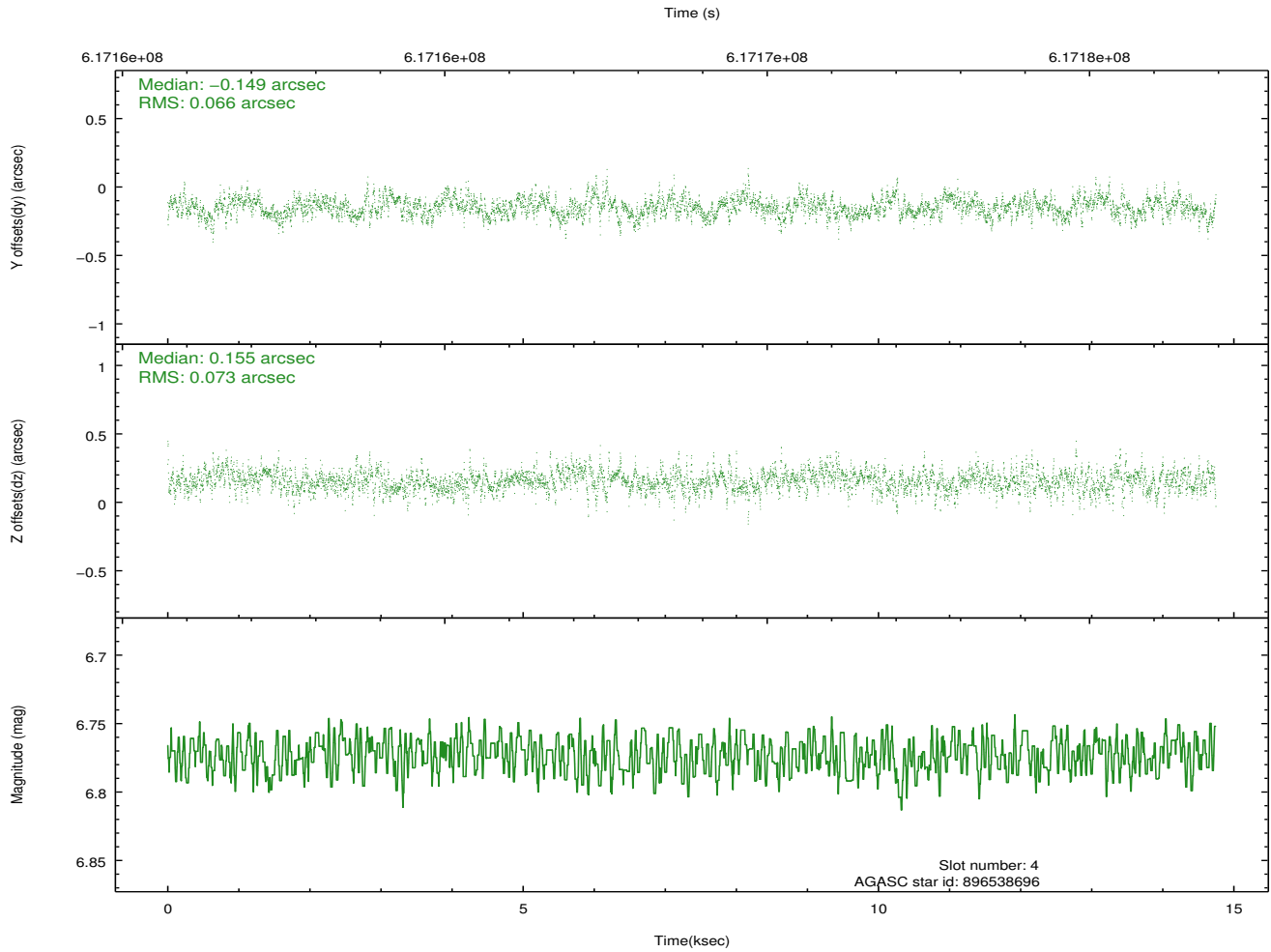
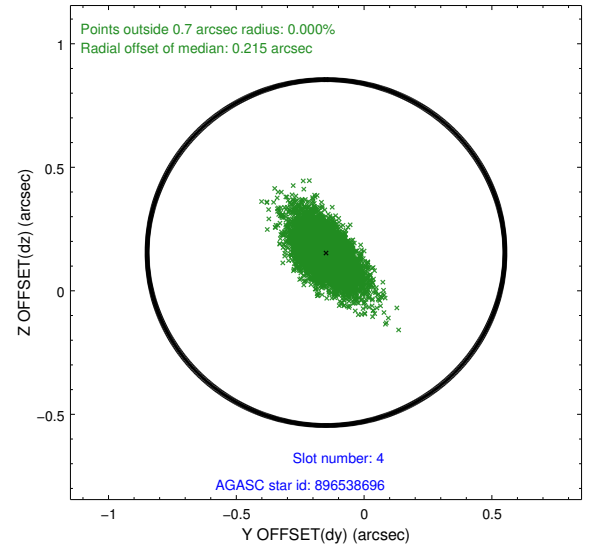
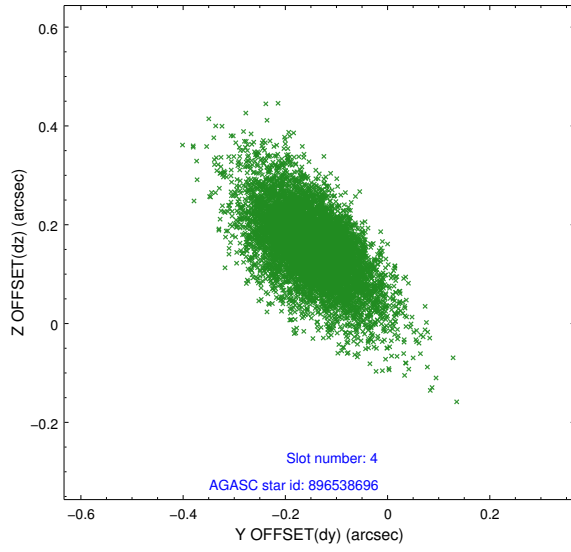
slot	status	used	id	mag	n_pts	med_dy	med_dz	dr1	dr2	ra	dec	mean_y	mean_z
0	FID		ACIS-I-2	7.02	3598	-0.213	-0.088	0.011	0.019	0.000000	0.000000	-764.84	-846.52
1	FID		ACIS-I-4	7.06	3598	0.395	0.137	0.007	0.012	0.000000	0.000000	2149.66	1059.77
2	FID		ACIS-I-5	7.11	3598	-0.282	0.020	0.011	0.017	0.000000	0.000000	-1818.36	1057.79
3	GUIDE	used	896534664	8.17	7192	0.743	-0.016	0.106	0.193	266.405570	-28.407461	-1814.15	-188.02
4	GUIDE	used	896538696	6.77	7195	-0.149	0.155	0.099	0.181	266.298470	-28.325572	-2153.93	-483.41
5	GUIDE	used	896541360	7.69	7192	-0.288	-0.245	0.100	0.201	266.684478	-29.453744	2036.74	158.12
6	GUIDE	used	896404568	7.84	7193	0.142	0.236	0.120	0.209	265.687293	-28.431080	-2037.12	-2452.71
7	GUIDE	used	896540528	8.23	7187	-0.451	-0.127	0.118	0.219	267.368305	-29.314773	1848.85	2353.37

2.4 Star Slots

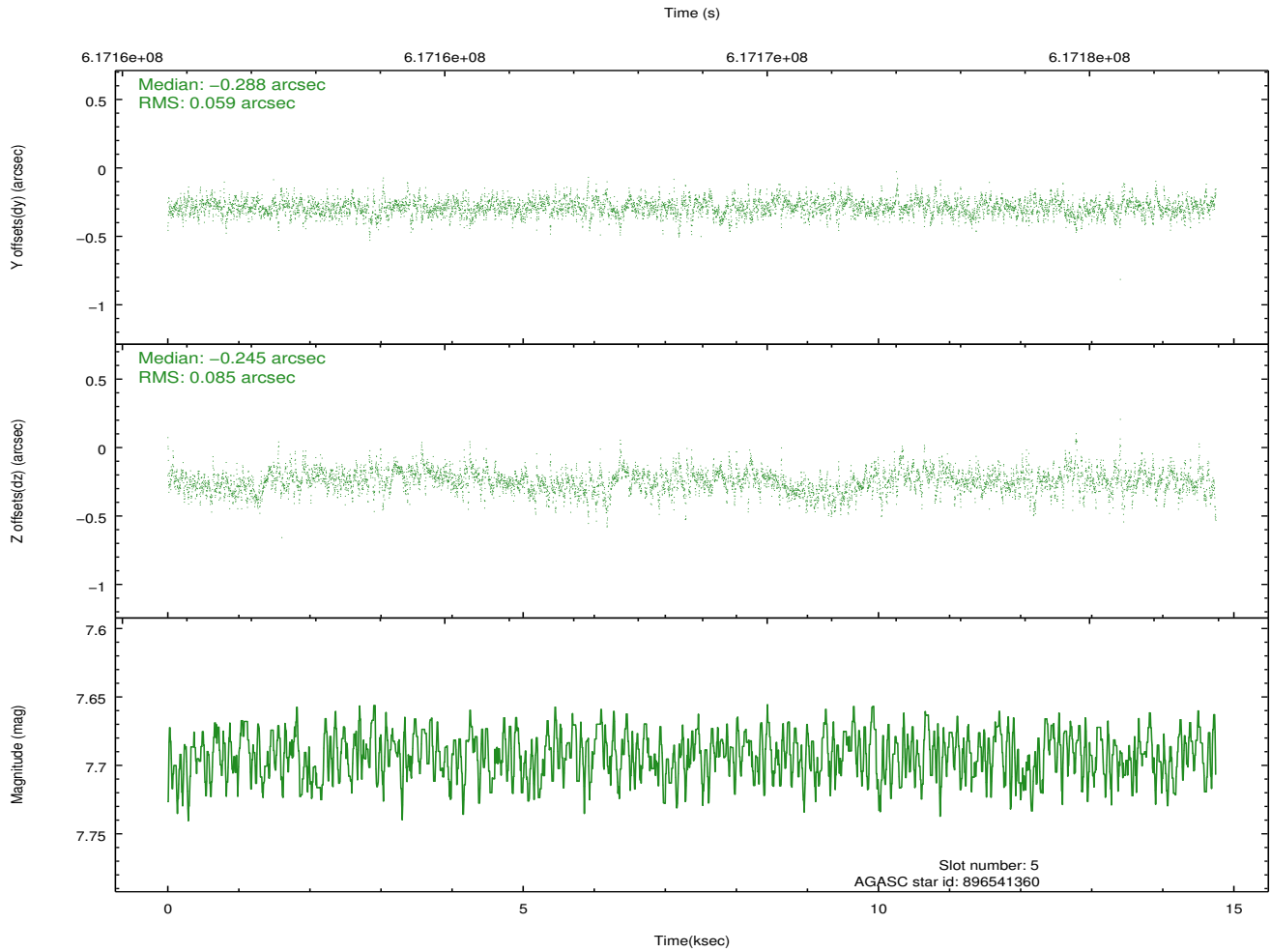
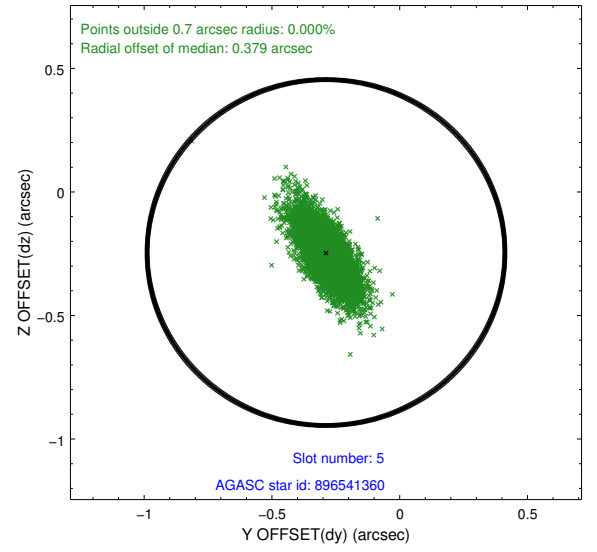
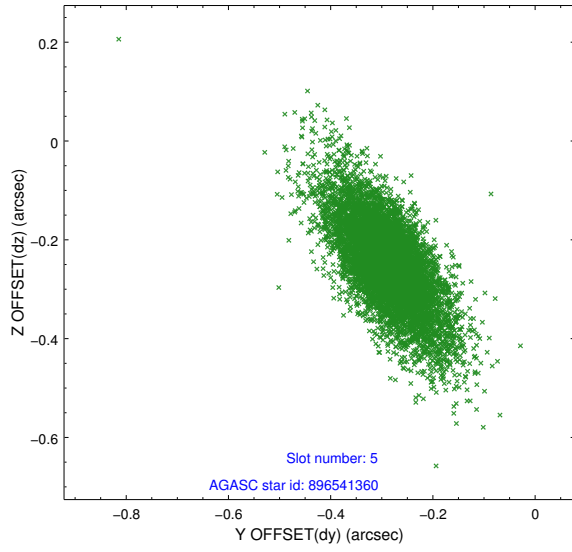
2.4.1 Slot 3



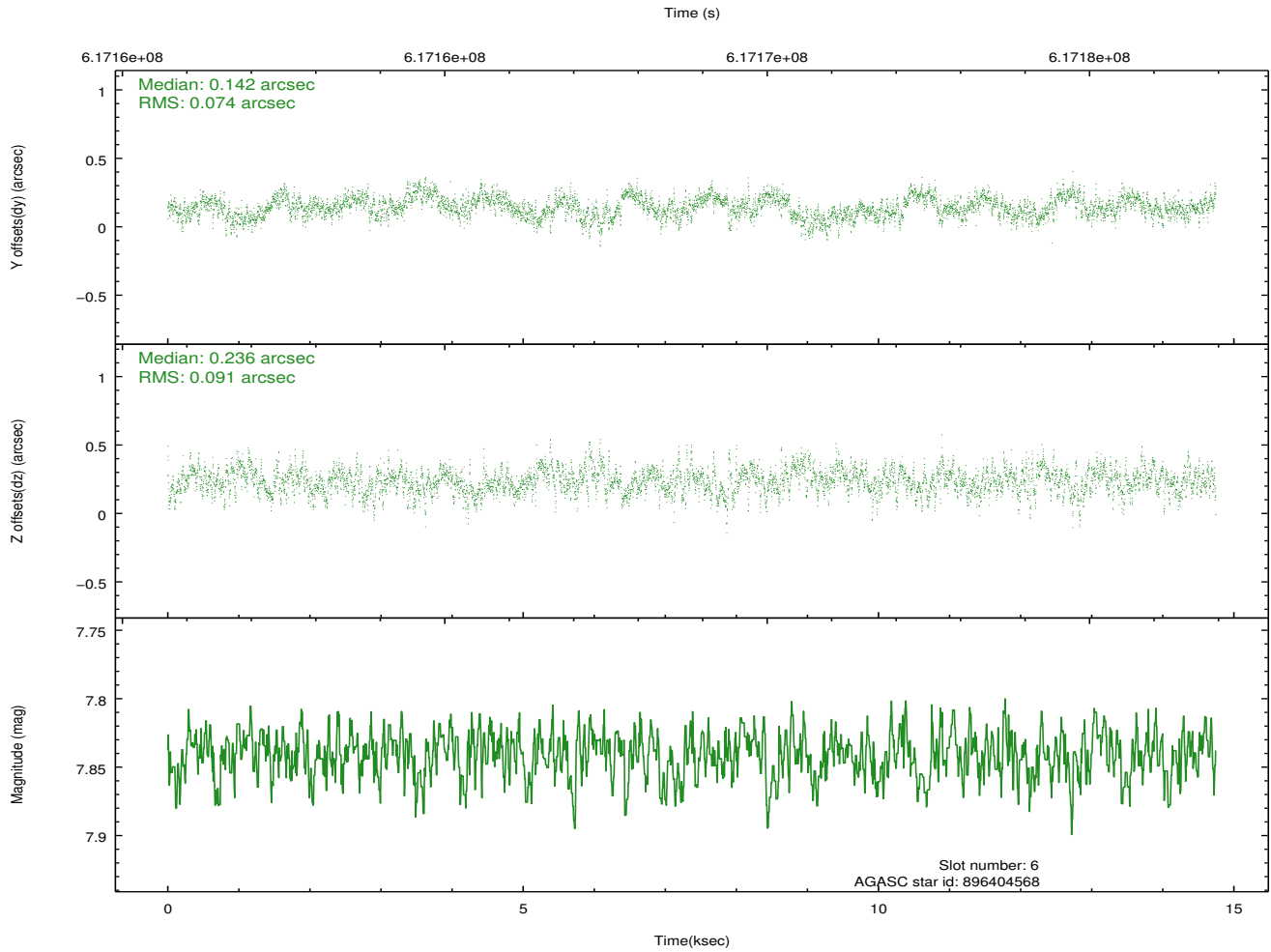
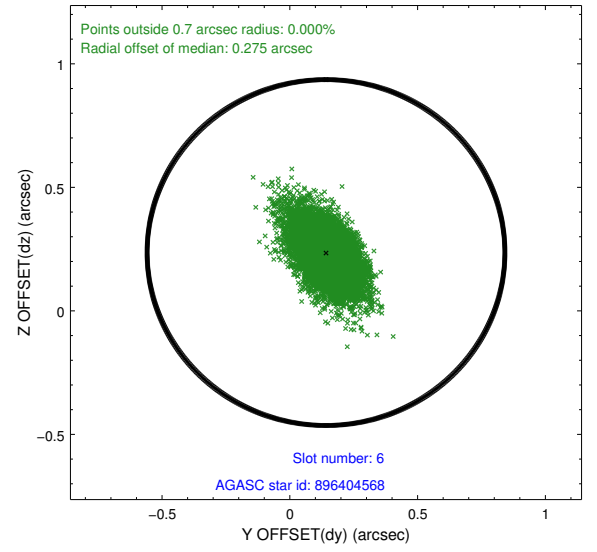
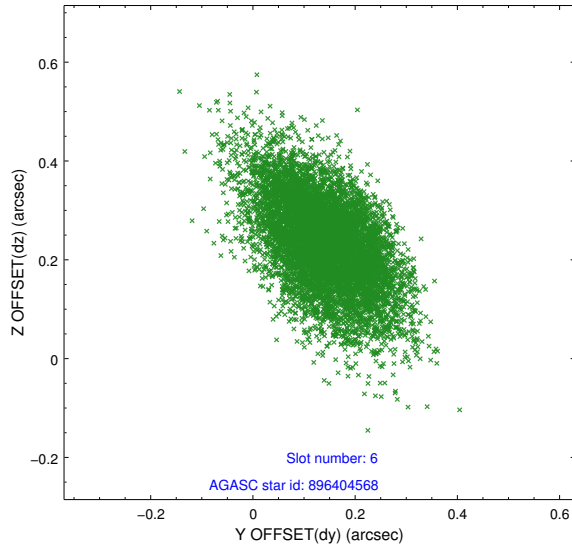
2.4.2 Slot 4



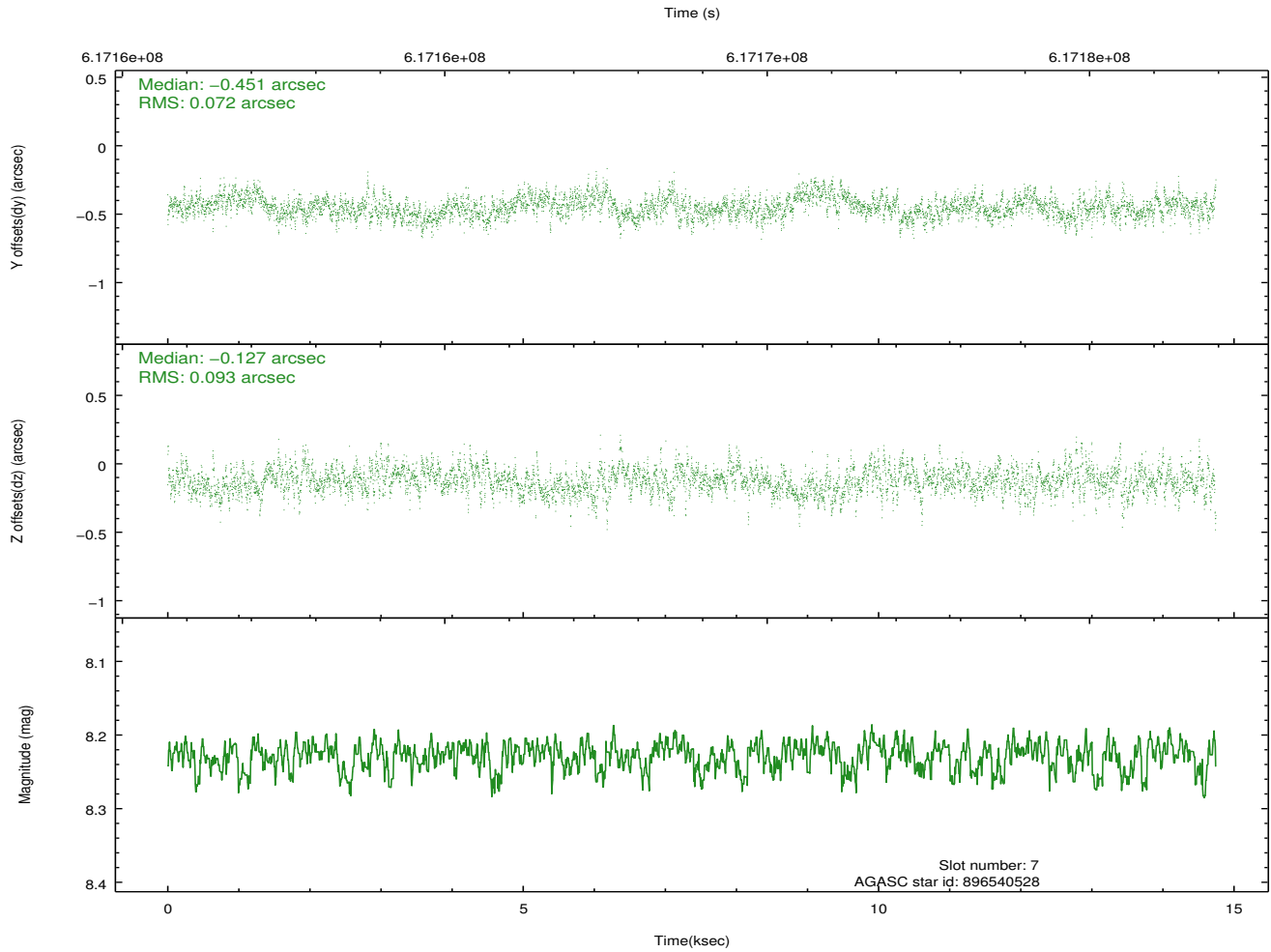
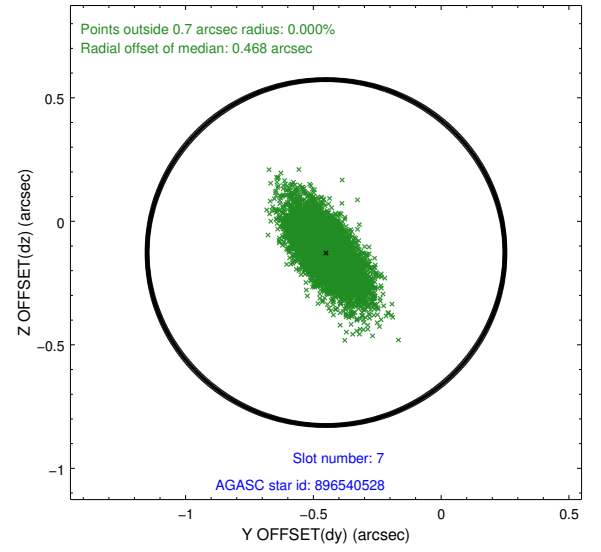
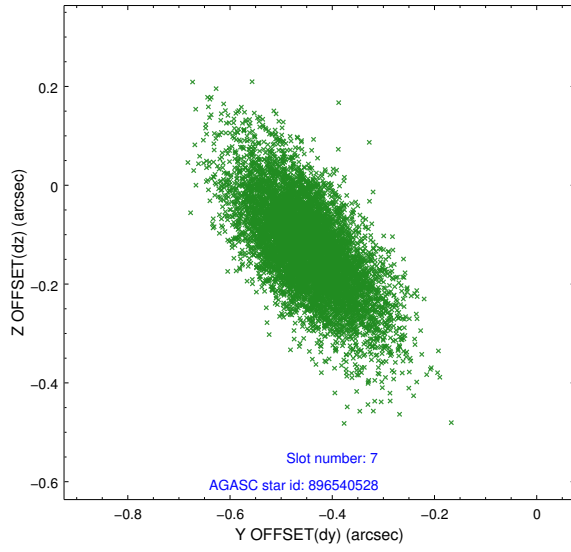
2.4.3 Slot 5



2.4.4 Slot 6

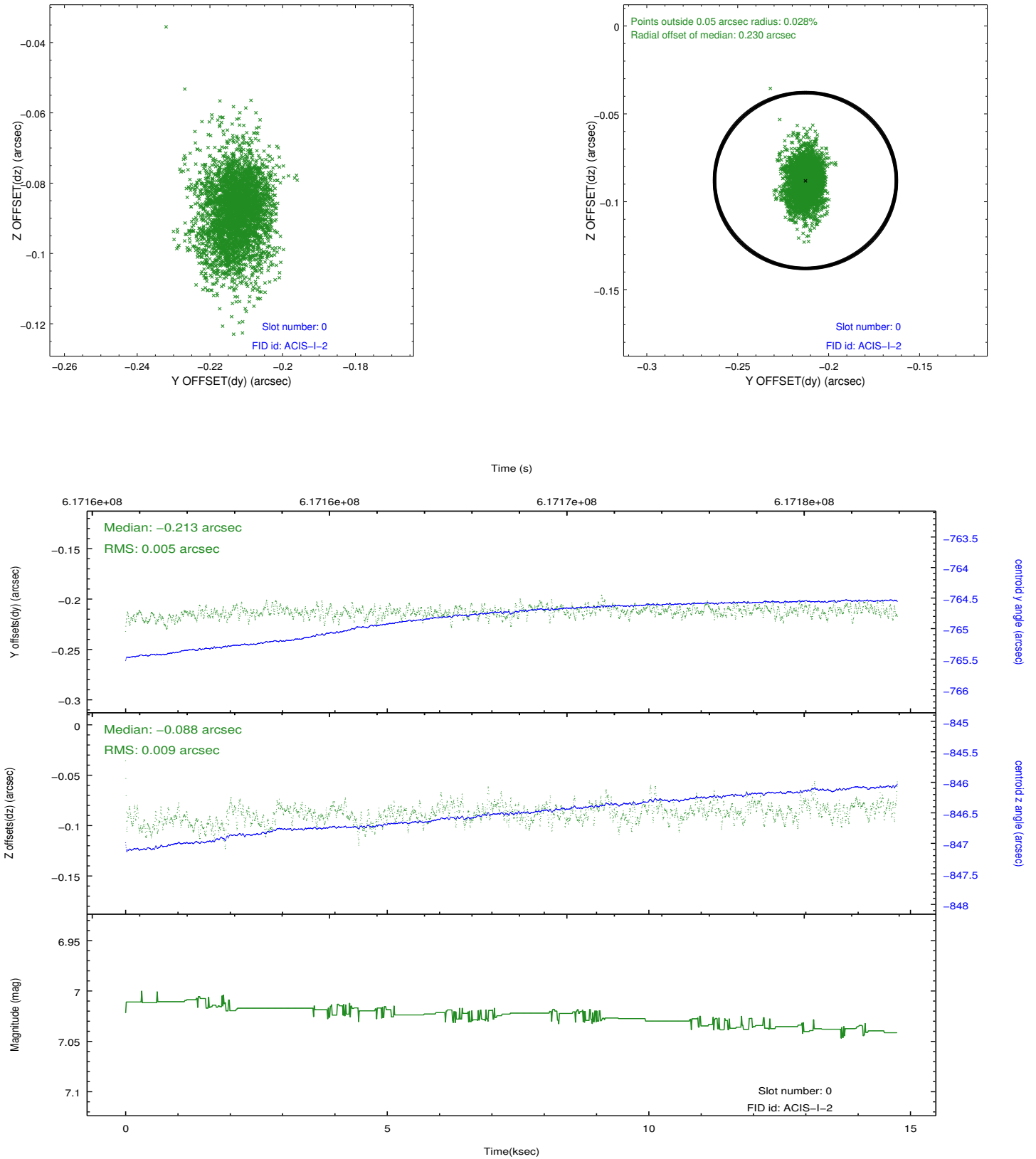


2.4.5 Slot 7

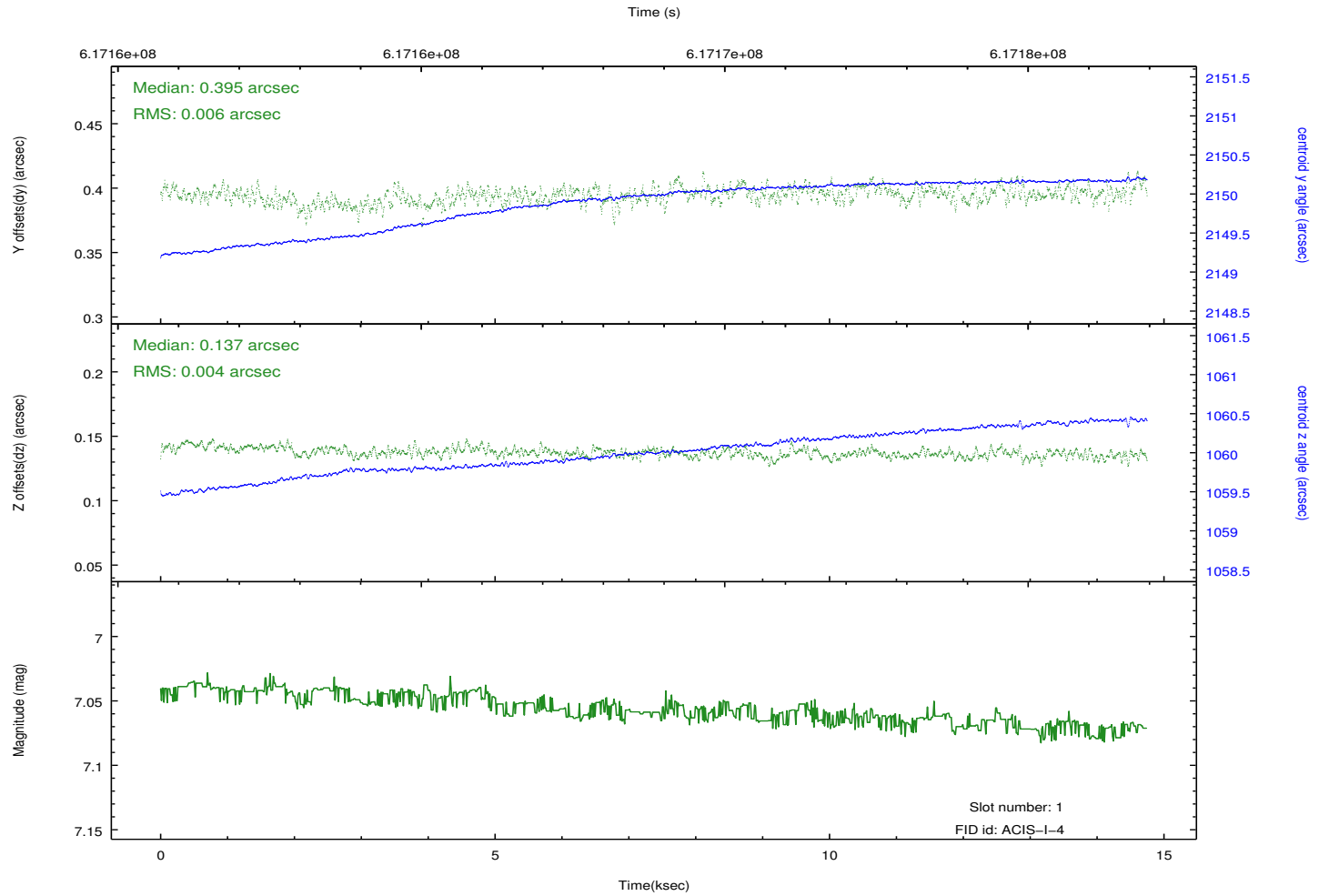
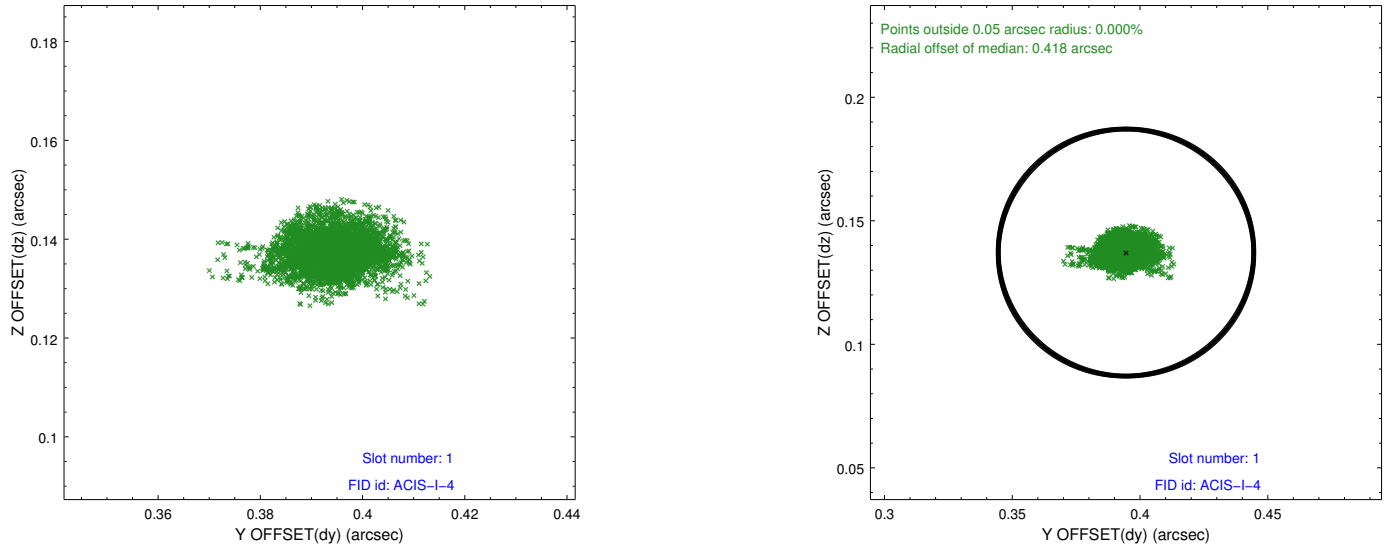


2.5 FID Slots

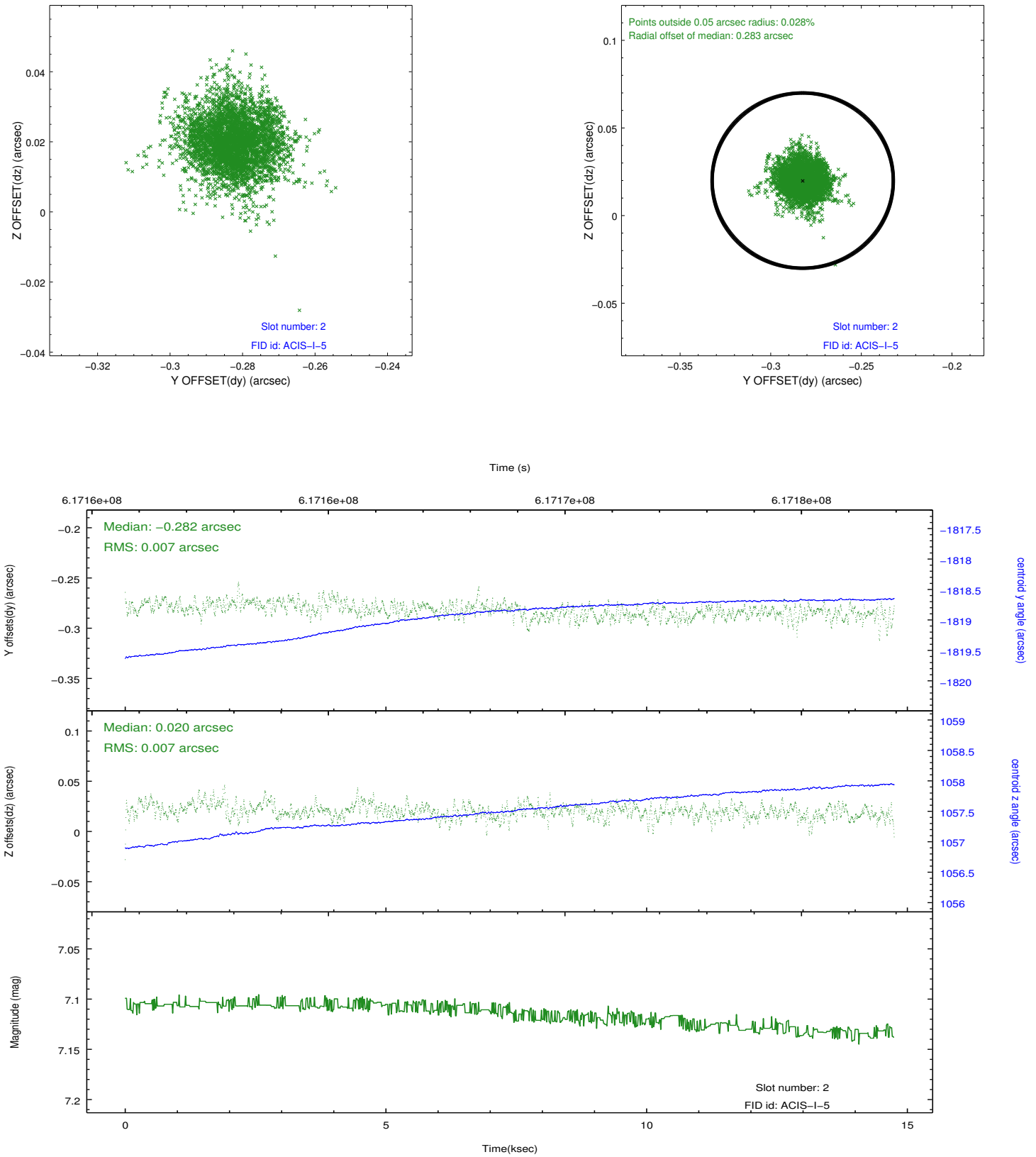
2.5.1 Slot 0



2.5.2 Slot 1



2.5.3 Slot 2



A Summary

A.1 Status

V&V Scientist	Beth Sundheim
V&V Date (YYYY-MM-DD)	2017.07.23
V&V Edition	1
V&V Disposition and Status	OK
V&V Charge Time	14.080200108409

A.2 Comments