

# V&V Reference Report

## L2 ASCDS Version : 10.6

Observation 19774 - L2 Version 1  
Chandra X-Ray Center

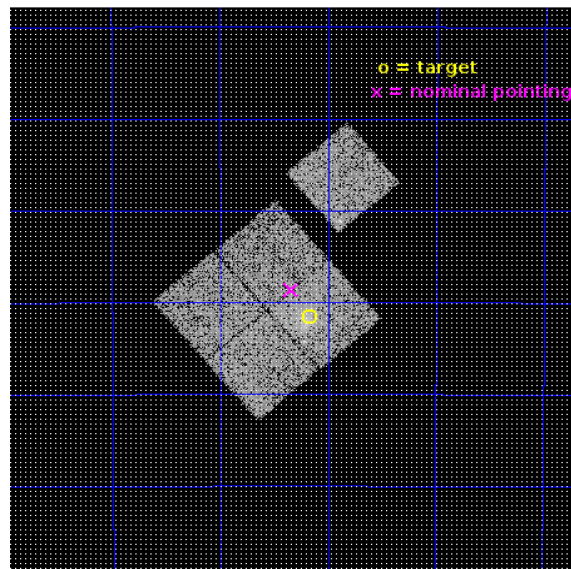
L2 Processing Date : Aug 14 2017

## Contents

<b>1</b>	<b>Front</b>	<b>2</b>
<b>2</b>	<b>OBI</b>	<b>3</b>
2.1	OBI . . . . .	3
2.1.1	Images . . . . .	3
2.1.2	Bias . . . . .	3
2.1.3	Parameters . . . . .	4
2.1.4	Events . . . . .	4
2.2	Compared Parameters . . . . .	5
2.3	Aspect . . . . .	6
2.4	Star Slots . . . . .	9
2.4.1	Slot 3 . . . . .	9
2.4.2	Slot 4 . . . . .	10
2.4.3	Slot 5 . . . . .	11
2.4.4	Slot 6 . . . . .	12
2.4.5	Slot 7 . . . . .	13
2.5	FID Slots . . . . .	14
2.5.1	Slot 0 . . . . .	14
2.5.2	Slot 1 . . . . .	15
2.5.3	Slot 2 . . . . .	16
<b>A</b>	<b>Summary</b>	<b>17</b>
A.1	Status . . . . .	17
A.2	Comments . . . . .	17

# 1 Front

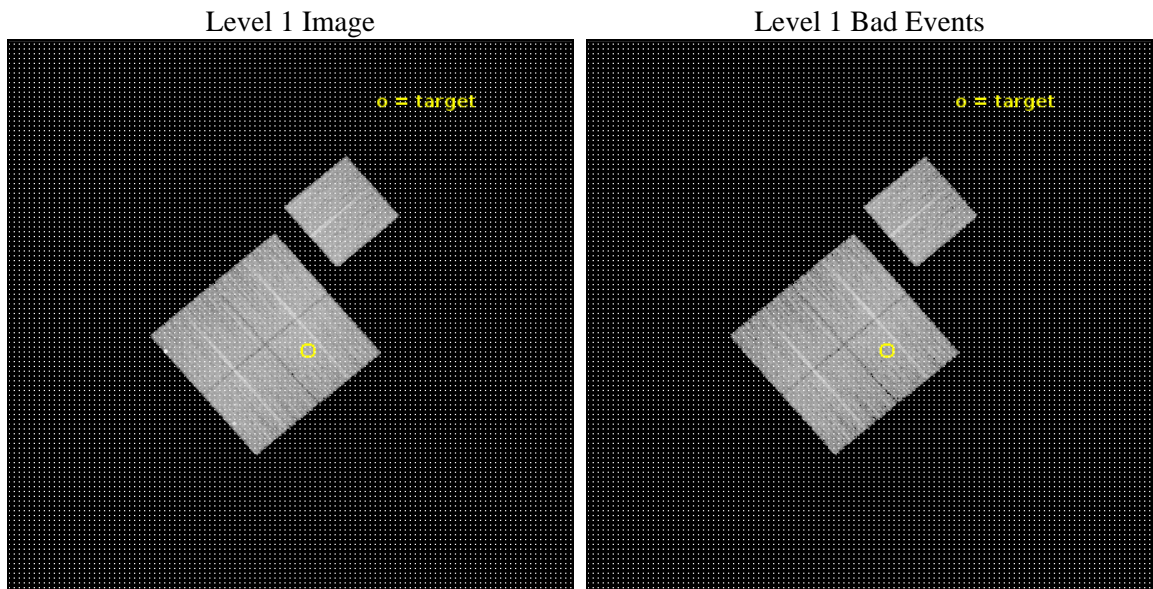
seq_num	801711	Sequence number
obs_id	19774	Observation id
title	Probing the Planck Cluster Sample	Proposal title
observer	Ralph Kraft	Principal investigator
object	G348.92	Source name
dtcycle	0	&#160
cycle	P	events from which exps? Prim/Second/Both
ra_targ	351.292917	Observer's specified target RA [deg]
dec_targ	-41.193694	Observer's specified target Dec [deg]
ra_nom	351.33490954093	Nominal RA [deg]
dec_nom	-41.143848922797	Nominal Dec [deg]
roll_nom	49.57650714324	Nominal Roll [deg]
revision	1	Processing version of data
ontime	11066.959025025	Sum of GTIs [s]
livetime	10922.361057987	Livetime [s]
ontime0	11070.100085258	Sum of GTIs [s]
ontime1	11063.817934752	Sum of GTIs [s]
ontime2	11070.100085258	Sum of GTIs [s]
ontime3	11066.959025025	Sum of GTIs [s]
ontime6	11066.959015012	Sum of GTIs [s]
l2events	38258	Number of level 2 events



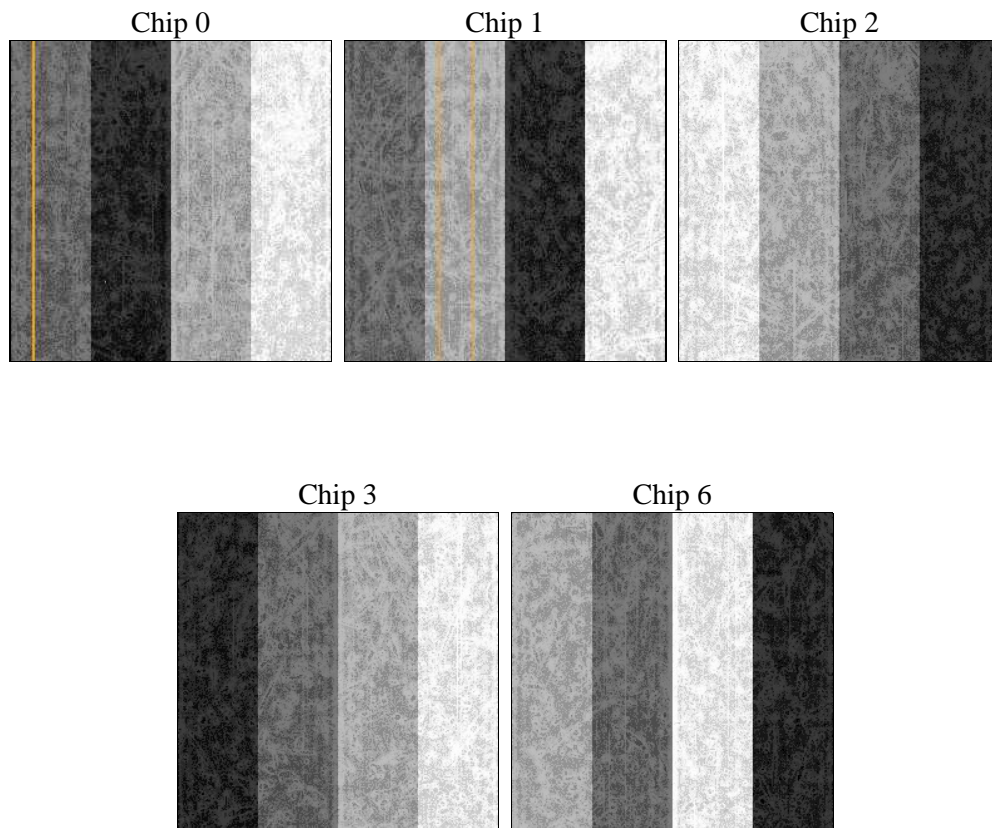
## 2 OBI

### 2.1 OBI

#### 2.1.1 Images



#### 2.1.2 Bias



### 2.1.3 Parameters

obi_num	0	Obi number	sched_exp_time	11000.000000	[s] Scheduled observation exposure time
ascdsver	10.6	Processing system revision	ontime	11066.959025025	Sum of GTIs [s]
caldbver	4.7.5	&#160	ontime0	11070.100085258	Sum of GTIs [s]
date	2017-08-14T23:53:28	Date and time of file creation	ontime1	11063.817934752	Sum of GTIs [s]
revision	1	Processing version of data	ontime2	11070.100085258	Sum of GTIs [s]
			ontime3	11066.959025025	Sum of GTIs [s]
			ontime6	11066.959015012	Sum of GTIs [s]
			l1events	397494	Number of level 1 events

### 2.1.4 Events

	ccd 0	ccd 1	ccd 2	ccd 3	ccd 6
level 1 events	73823	77427	83561	81435	81248
rejected events	63173	67640	75585	71437	72258
rejected %	85%	87%	90%	87%	88%

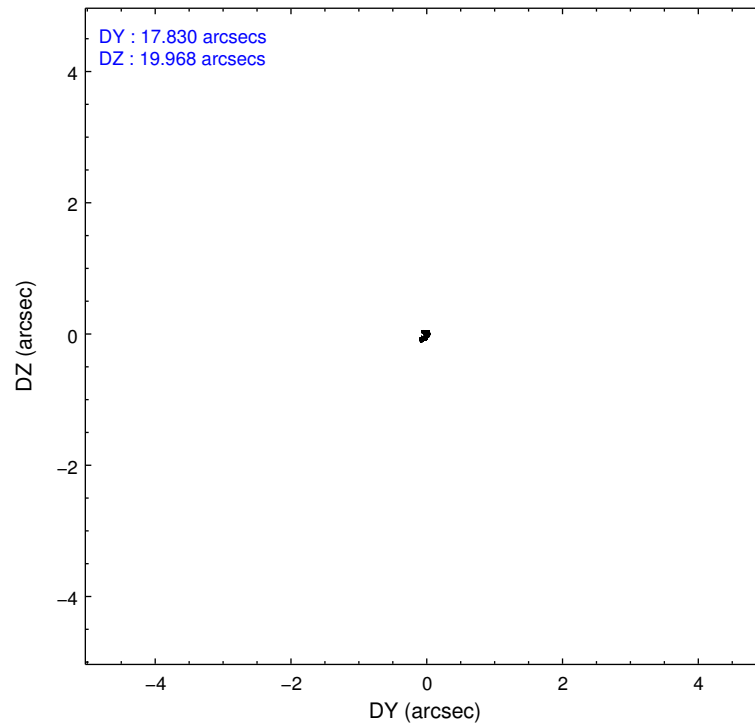
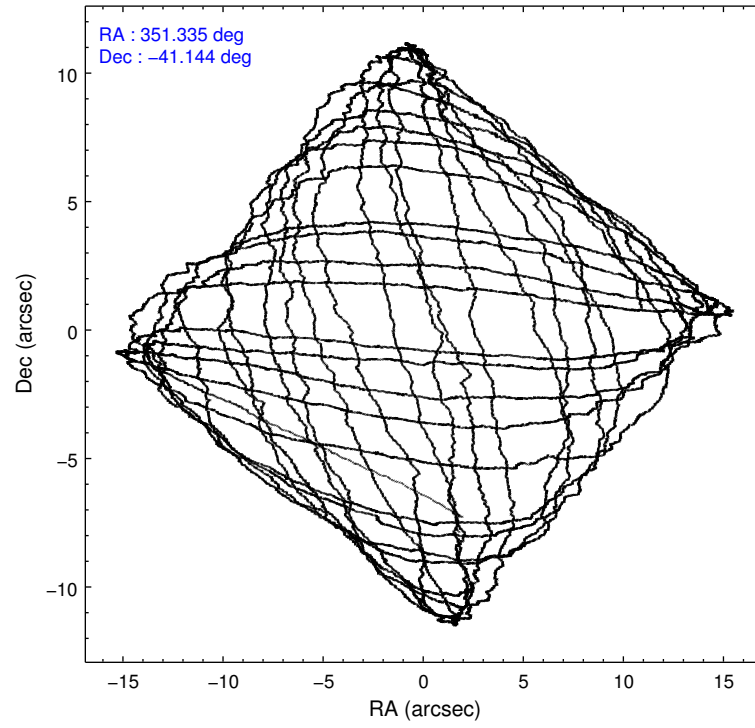
	ccd 0	ccd 1	ccd 2	ccd 3	ccd 6
grade 0 events	5039	3042	2872	4391	2755
	6%	3%	3%	5%	3%
grade 1 events	56	62	50	37	31
	0%	0%	0%	0%	0%
grade 2 events	2141	2843	1938	1961	2218
	2%	3%	2%	2%	2%
grade 3 events	843	815	815	918	860
	1%	1%	0%	1%	1%
grade 4 events	773	849	771	901	830
	1%	1%	0%	1%	1%
grade 5 events	3200	3358	2865	3716	3371
	4%	4%	3%	4%	4%
grade 6 events	1856	2239	1582	1828	2327
	2%	2%	1%	2%	2%
grade 7 events	59915	64219	72668	67683	68856
	81%	82%	86%	83%	84%

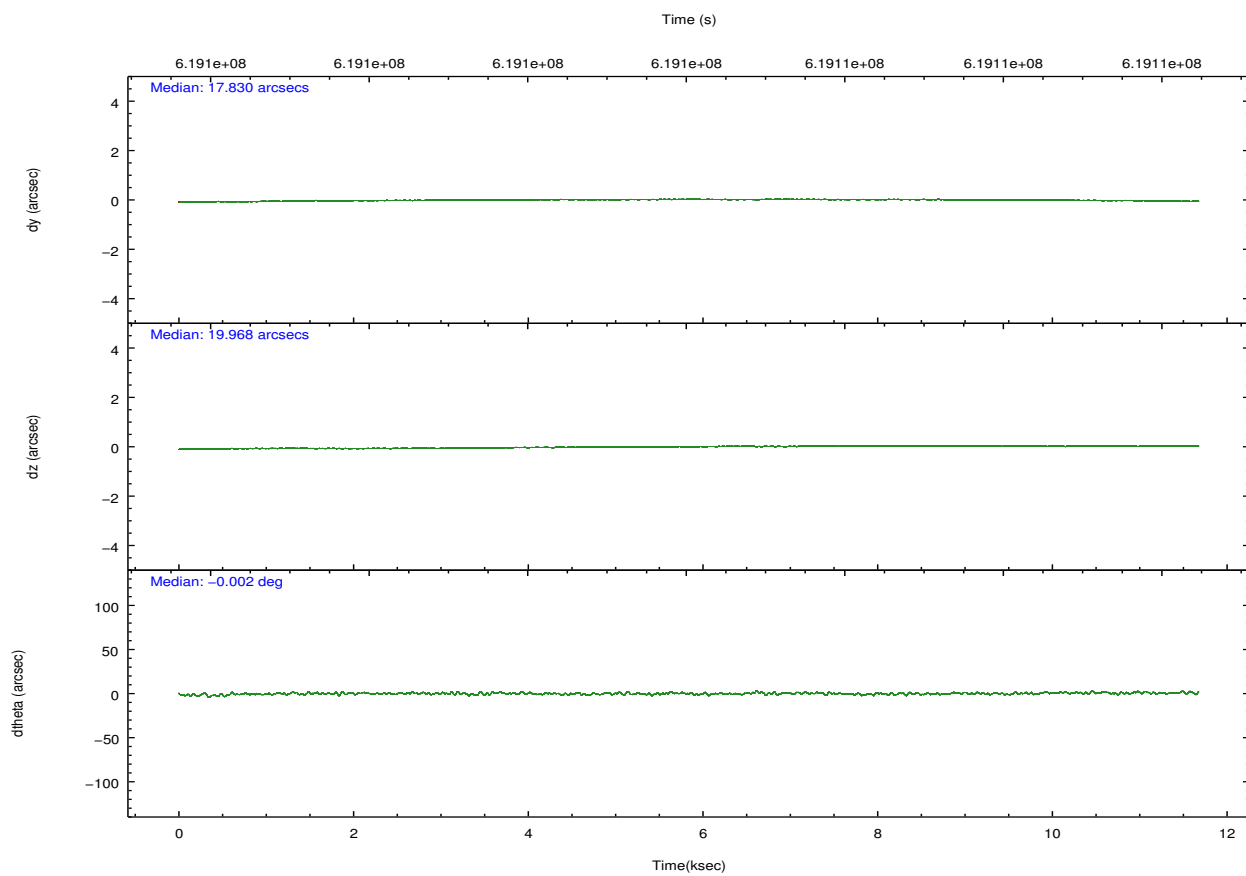
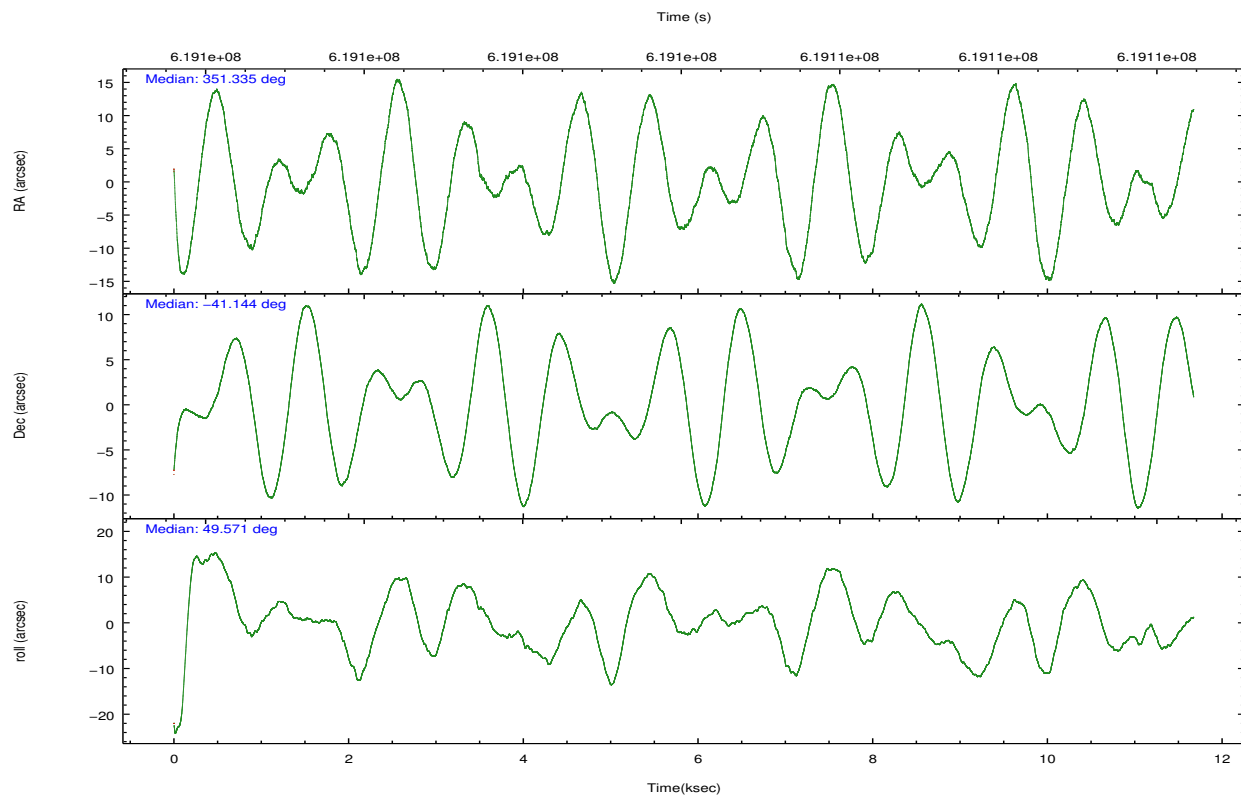


## 2.2 Compared Parameters

Parameter	Planned	Actual	Parameter	Planned	Actual
Instrument	ACIS	ACIS	Obspar format version number	7	7
Detector	ACIS-01236	ACIS-01236	Obspar file type	PREDICTED	ACTUAL
Grating	NONE	NONE	Obspar update status	NONE	UPDATED
Data mode	VFAINT	VFAINT	Number of optional ACIS chips dropped	0	0
Observation mode	POINTING	POINTING	On-chip summing requested	N	N
[deg] Pointing RA	351.328432	351.3349095409301	Subarray requested	NONE	NONE
[deg] Pointing Dec	-41.171042	-41.14384892279747	Alternating exposures requested	N	N
[deg] Pointing Roll	49.363568	49.57650714323989	[s] Primary exposure time	0.000000	3.1
[mm] SIM focus pos	-0.782348	-0.7809083437167272			
[mm] SIM defocus	0	0.001439871863259334			
[mm] SIM translation stage pos	-225.842463	-225.8458576473255			
[mm] SIM translation stage offset	-7.75	-7.746595355604228			
[s] Observation start time (MET)	619098867.184000	619097681.88304			
Observation start date	2017-08-14T11:53:18	2017-08-14T11:34:41			
[s] Observation end time (MET)	619109867.184000	619110787.02131			
Observation end date	2017-08-14T14:56:38	2017-08-14T15:13:07			
Read mode	TIMED	TIMED			

## 2.3 Aspect



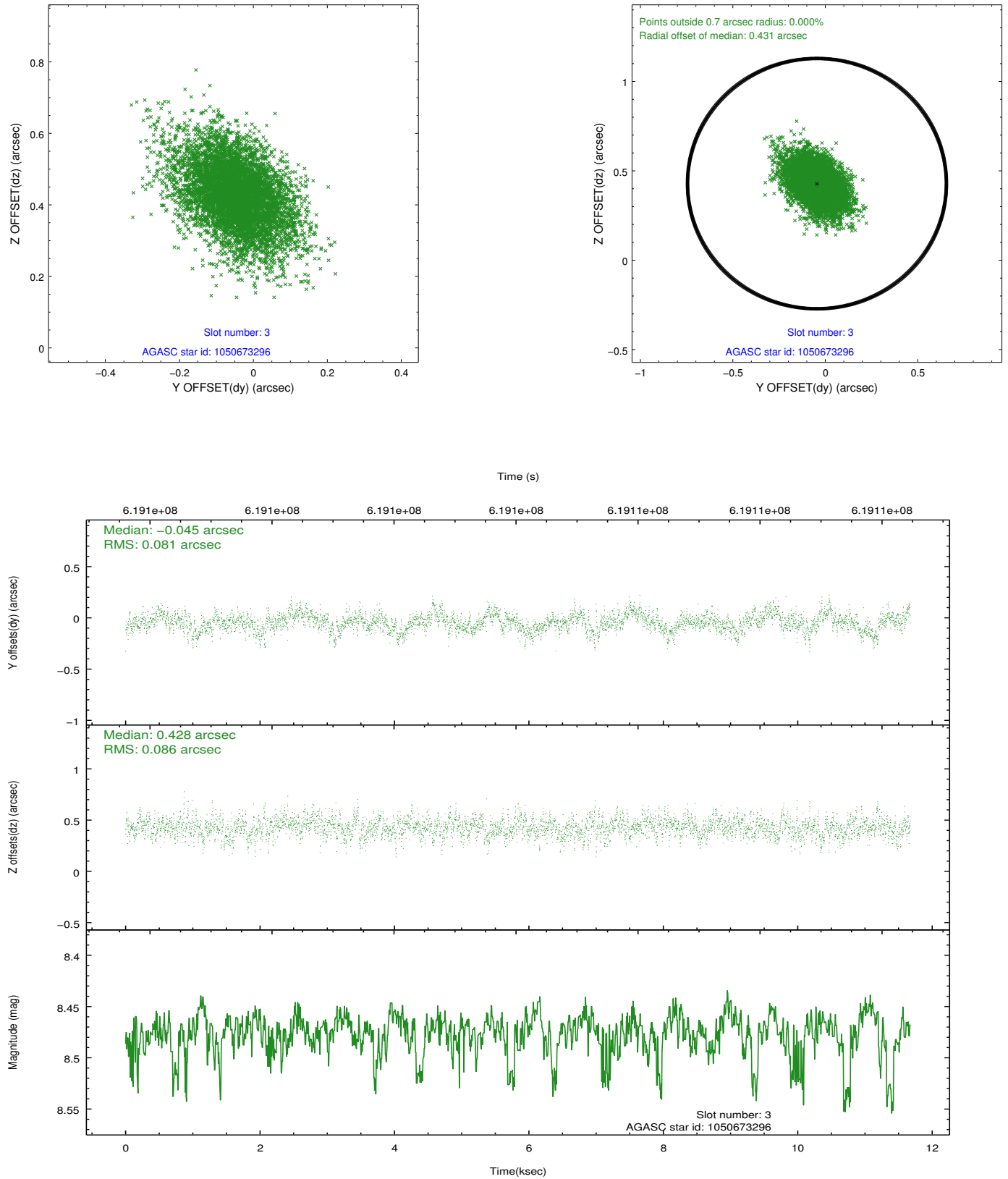


### Slot Statistics

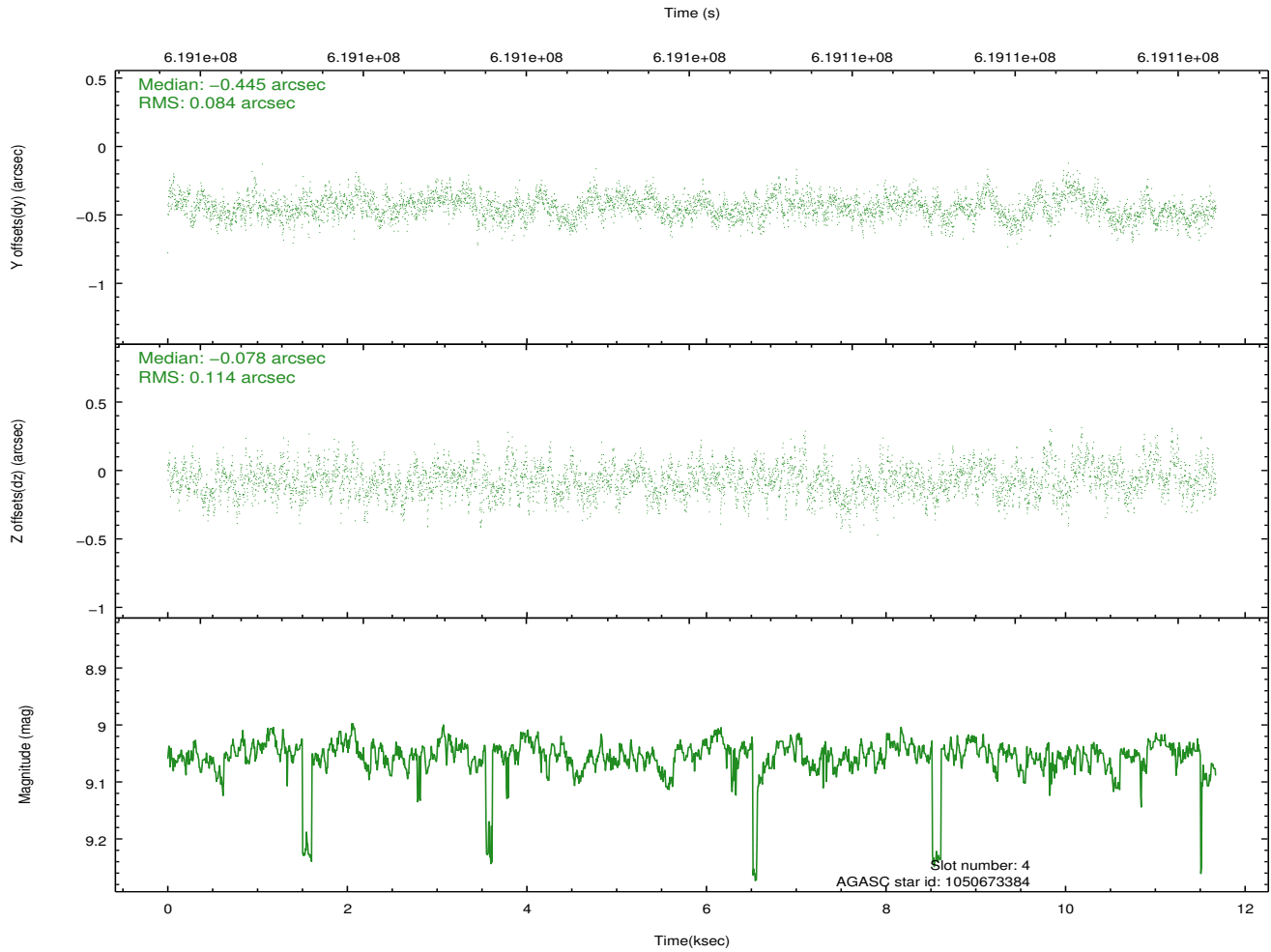
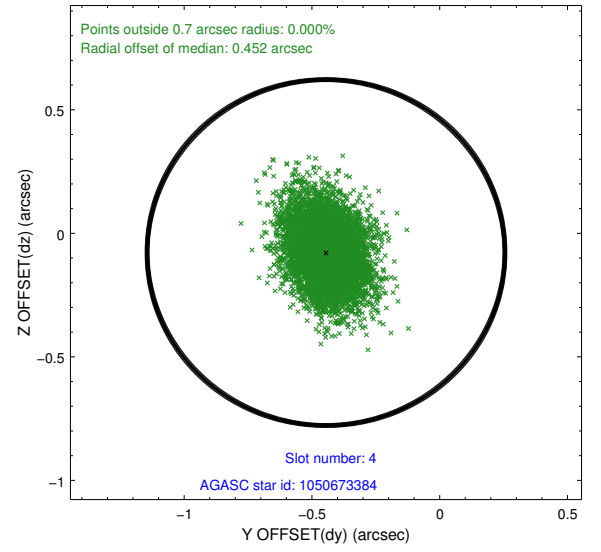
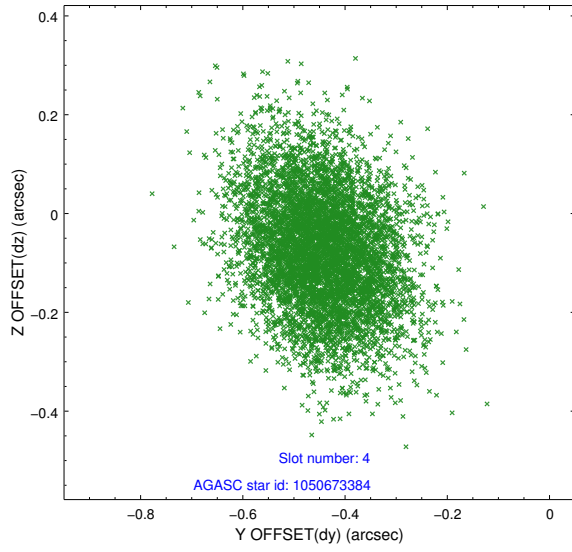
slot	status	used	id	mag	n_pts	med_dy	med_dz	dr1	dr2	ra	dec	mean_y	mean_z
0	FID		ACIS-I-1	7.25	2848	0.131	-0.081	0.012	0.020	0.000000	0.000000	921.54	-1002.80
1	FID		ACIS-I-2	7.20	2848	-0.457	-0.108	0.008	0.013	0.000000	0.000000	-773.31	-1008.50
2	FID		ACIS-I-4	7.16	2848	0.228	0.256	0.009	0.016	0.000000	0.000000	2140.90	898.03
3	GUIDE	used	1050673296	8.48	5692	-0.045	0.428	0.123	0.212	350.654008	-41.441392	-1929.35	742.53
4	GUIDE	used	1050673384	9.05	5693	-0.445	-0.078	0.149	0.247	351.188402	-40.419106	1801.37	2050.43
5	GUIDE	used	1050674976	9.76	5680	-0.586	-0.203	0.218	0.399	351.410369	-40.394707	2266.69	1649.96
6	GUIDE	used	1050676544	8.56	5695	0.824	-0.924	0.136	0.233	350.420349	-41.143468	-1536.70	1923.60
7	GUIDE	used	1050681192	9.38	5690	0.245	0.762	0.175	0.302	351.567647	-41.694409	-1011.55	-1714.72

## 2.4 Star Slots

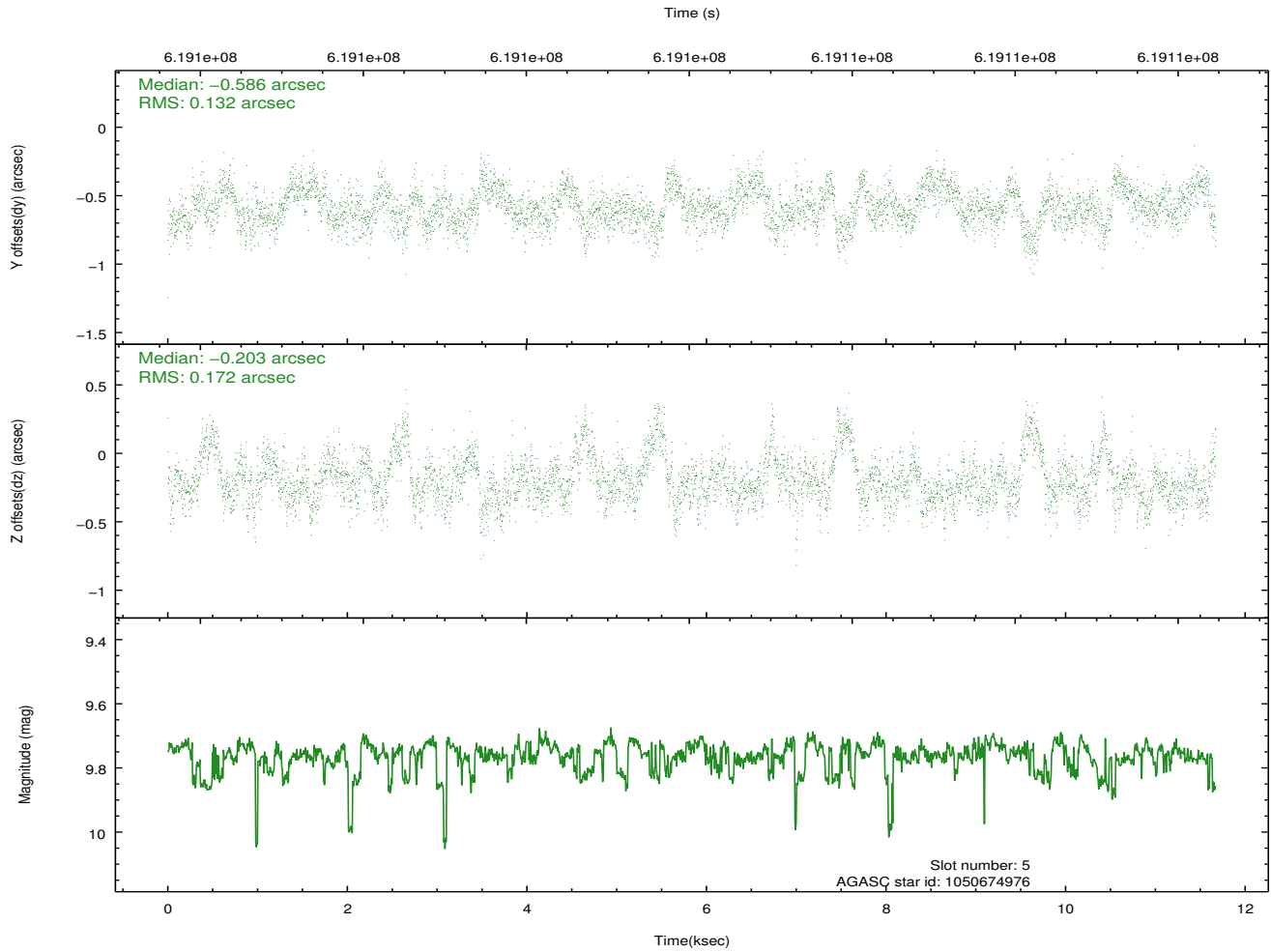
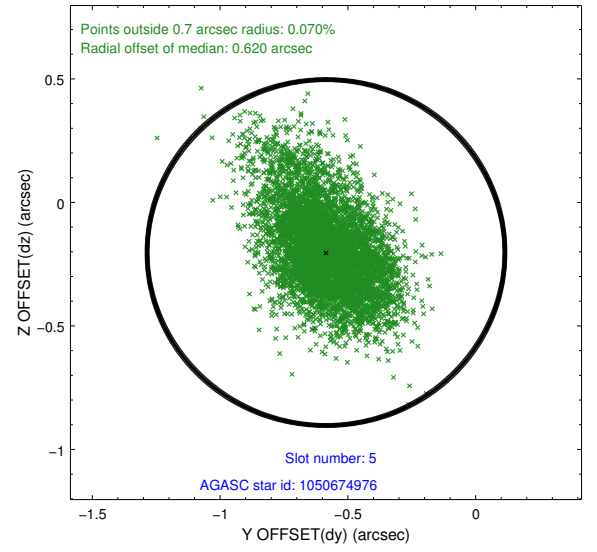
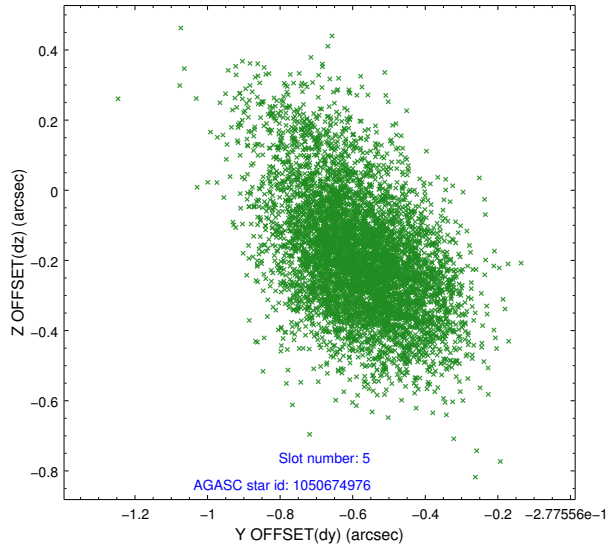
### 2.4.1 Slot 3



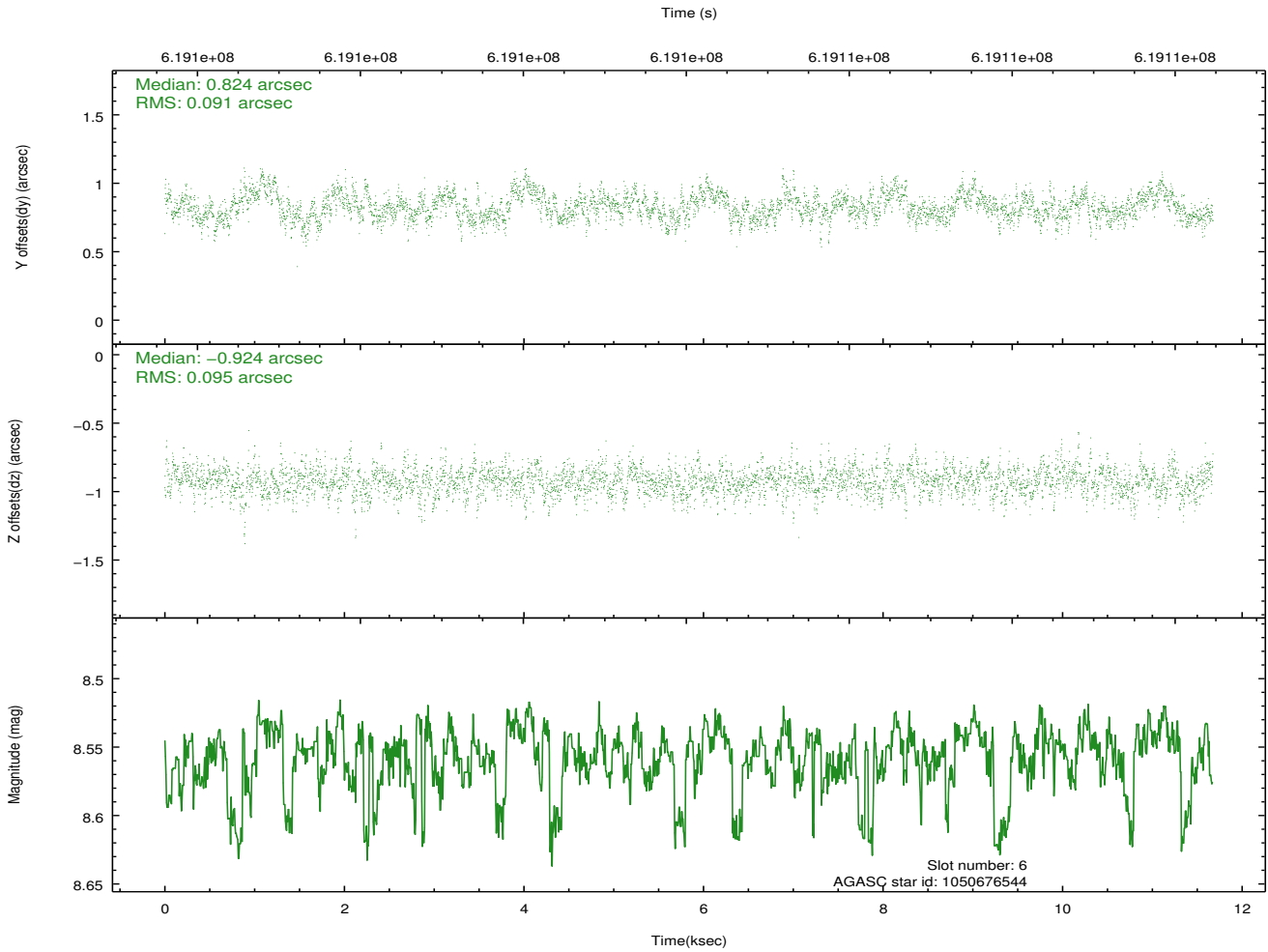
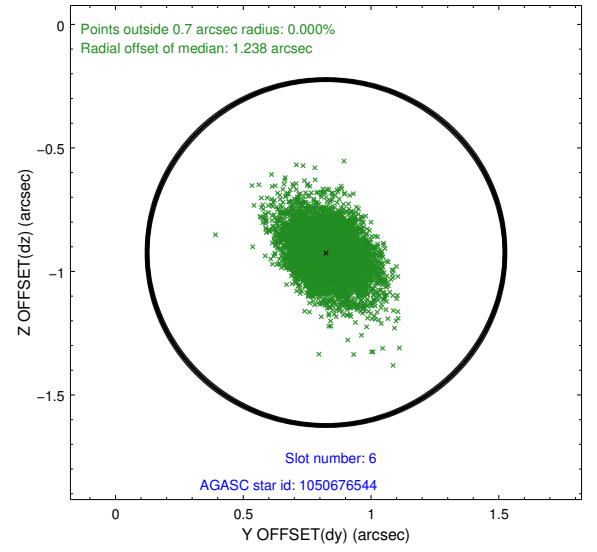
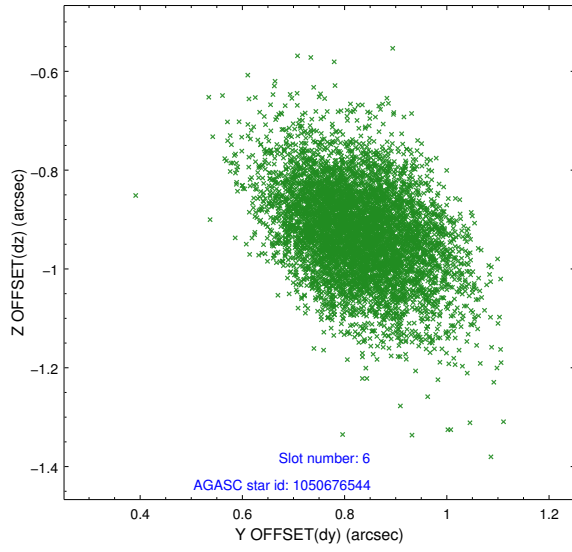
## 2.4.2 Slot 4



### 2.4.3 Slot 5

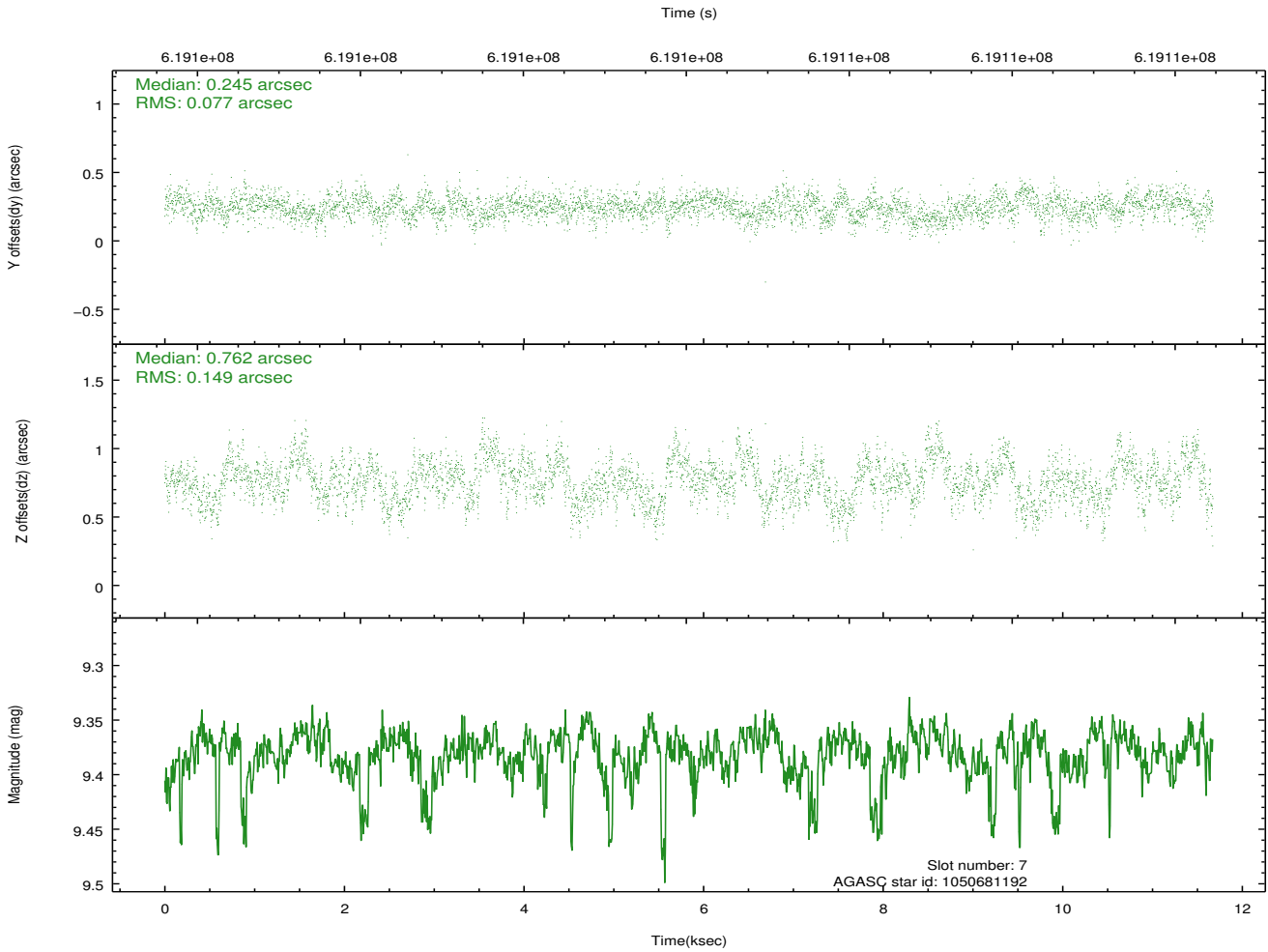
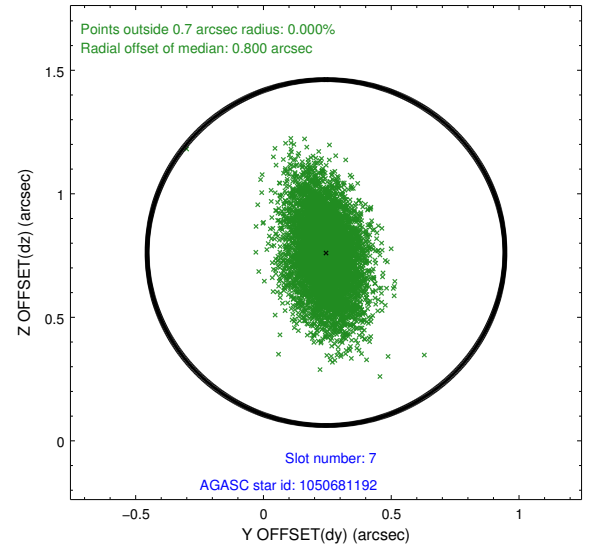
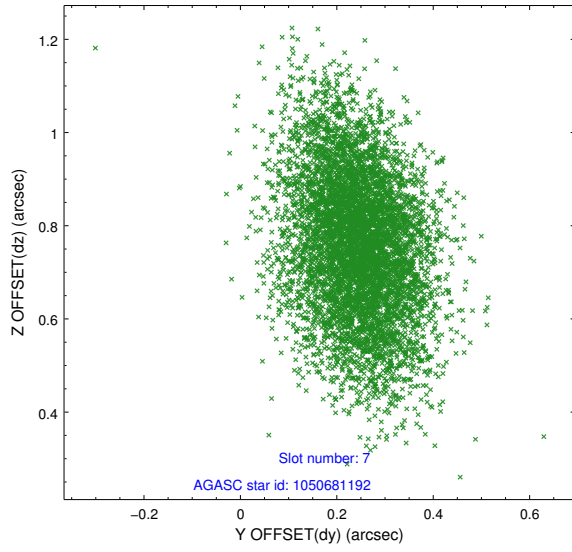


## 2.4.4 Slot 6



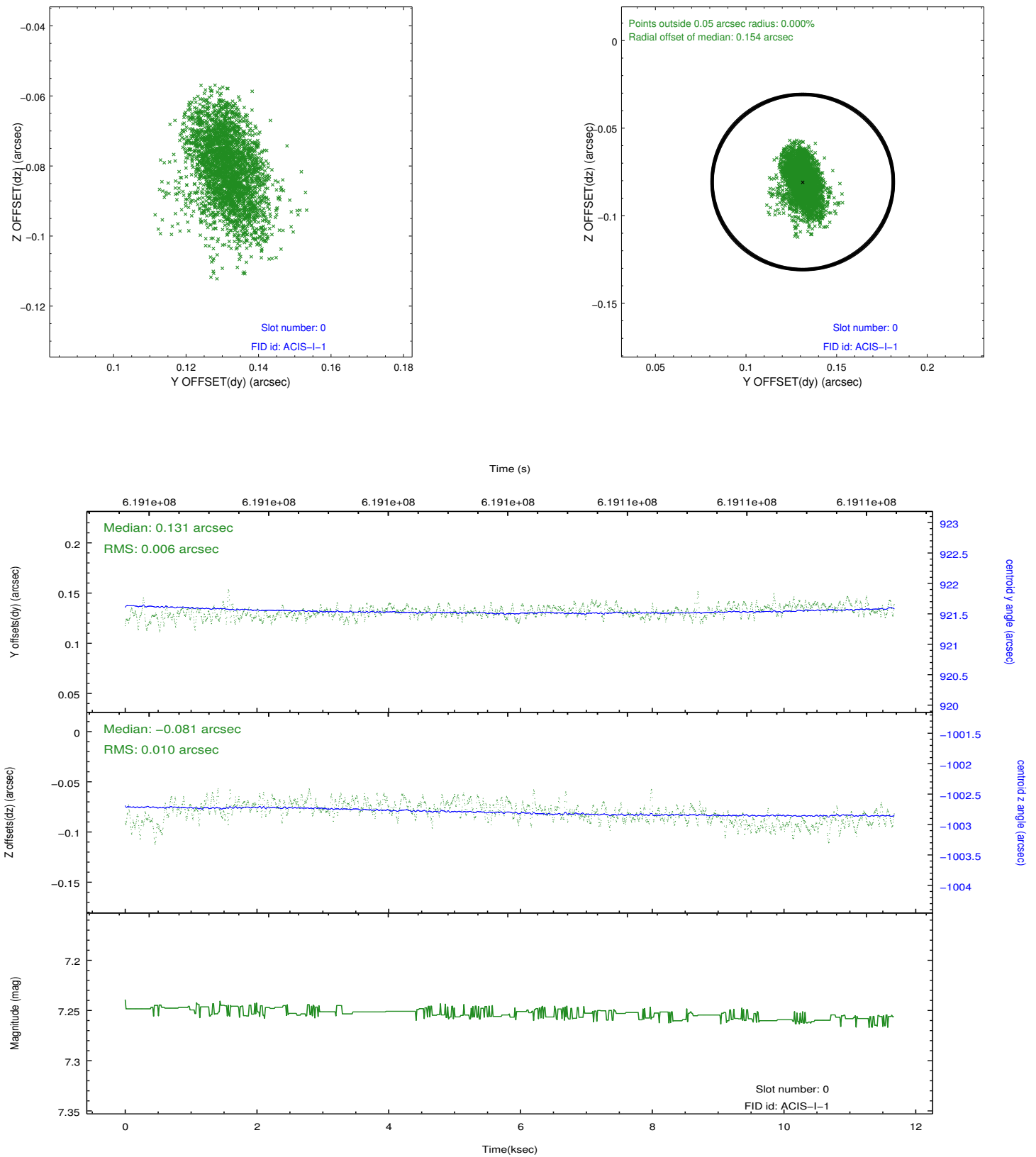


## 2.4.5 Slot 7

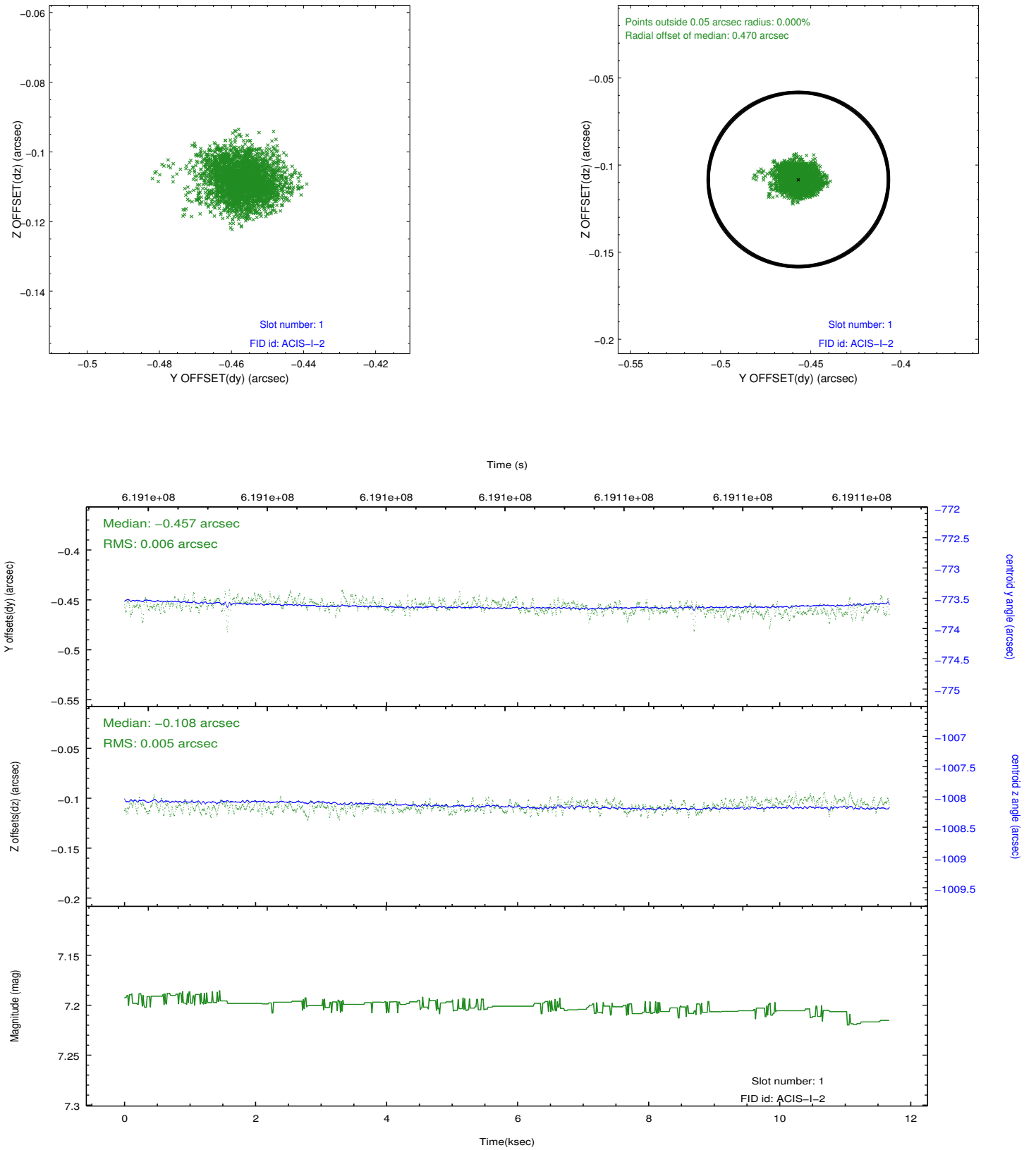


## 2.5 FID Slots

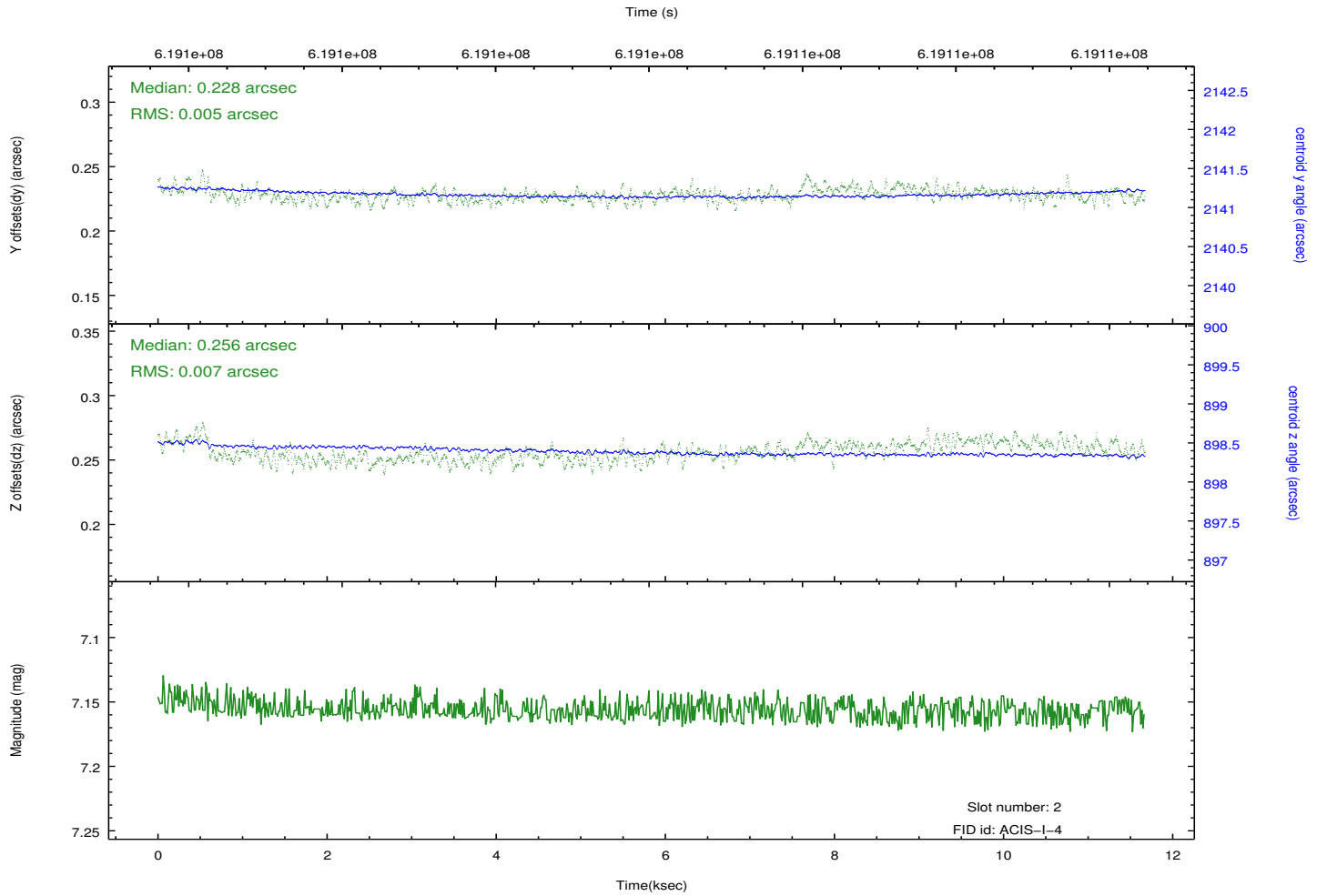
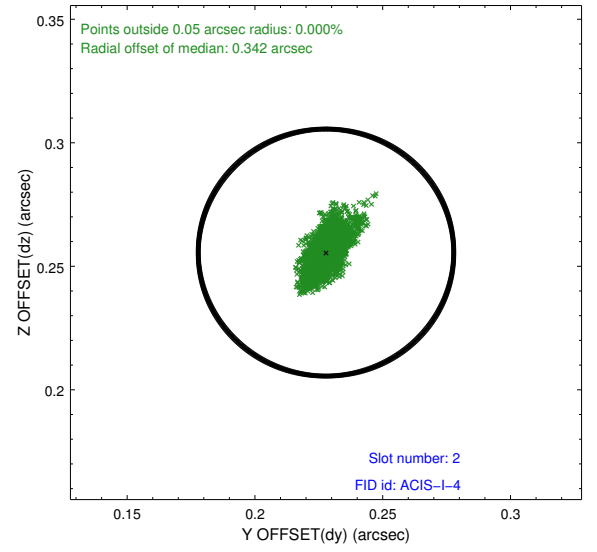
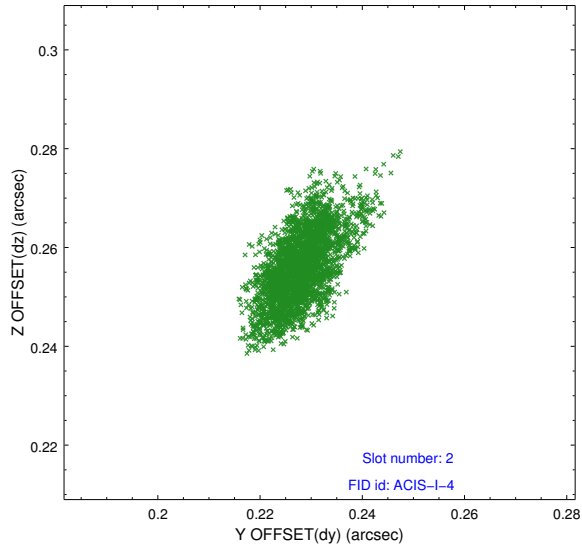
### 2.5.1 Slot 0



## 2.5.2 Slot 1



### 2.5.3 Slot 2



## A Summary

### A.1 Status

V&V Scientist	Beth Sundheim
V&V Date (YYYY-MM-DD)	2017.08.14
V&V Edition	1
V&V Disposition and Status	OK
V&V Charge Time	11.066959025025

### A.2 Comments