

V&V Reference Report

L2 ASCDS Version : 10.6

Observation 20888 - L2 Version 1
Chandra X-Ray Center

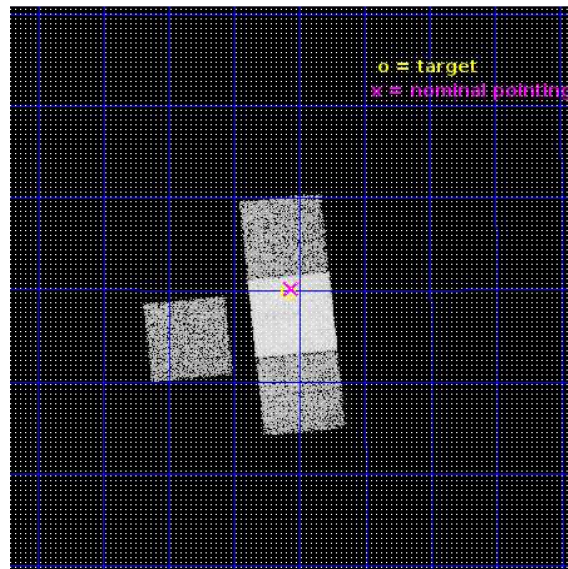
L2 Processing Date : Dec 21 2017

Contents

1	Front	2
2	OBI	3
2.1	OBI	3
2.1.1	Images	3
2.1.2	Bias	3
2.1.3	Parameters	4
2.1.4	Events	4
2.2	Compared Parameters	5
2.3	Aspect	6
2.4	Star Slots	9
2.4.1	Slot 3	9
2.4.2	Slot 4	10
2.4.3	Slot 5	11
2.4.4	Slot 6	12
2.4.5	Slot 7	13
2.5	FID Slots	14
2.5.1	Slot 0	14
2.5.2	Slot 1	15
2.5.3	Slot 2	16
A	Summary	17
A.1	Status	17
A.2	Comments	17

1 Front

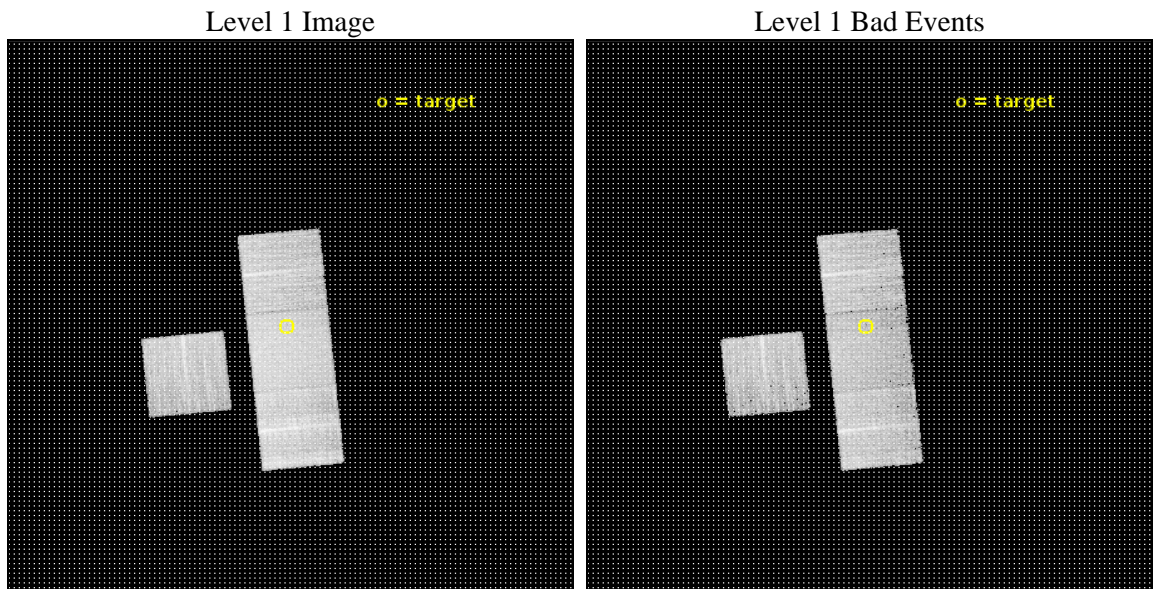
seq_num	703344	Sequence number
obs_id	20888	Observation id
title	The interactions of a `switching off' radio galaxy at crucial radio power	Proposal title
observer	Diana Worrall	Principal investigator
object	3C 192	Source name
dtcycle	0	
cycle	P	events from which exps? Prim/Second/Both
ra_targ	121.395833	Observer's specified target RA [deg]
dec_targ	24.164	Observer's specified target Dec [deg]
ra_nom	121.39107129227	Nominal RA [deg]
dec_nom	24.169276363195	Nominal Dec [deg]
roll_nom	84.158581419827	Nominal Roll [deg]
revision	1	Processing version of data
ontime	10067.795671105	Sum of GTIs [s]
livetime	9936.252508859	Livetime [s]
ontime3	10067.713591099	Sum of GTIs [s]
ontime6	10067.754631162	Sum of GTIs [s]
ontime7	10067.795671105	Sum of GTIs [s]
ontime8	10067.672551155	Sum of GTIs [s]
l2events	63042	Number of level 2 events



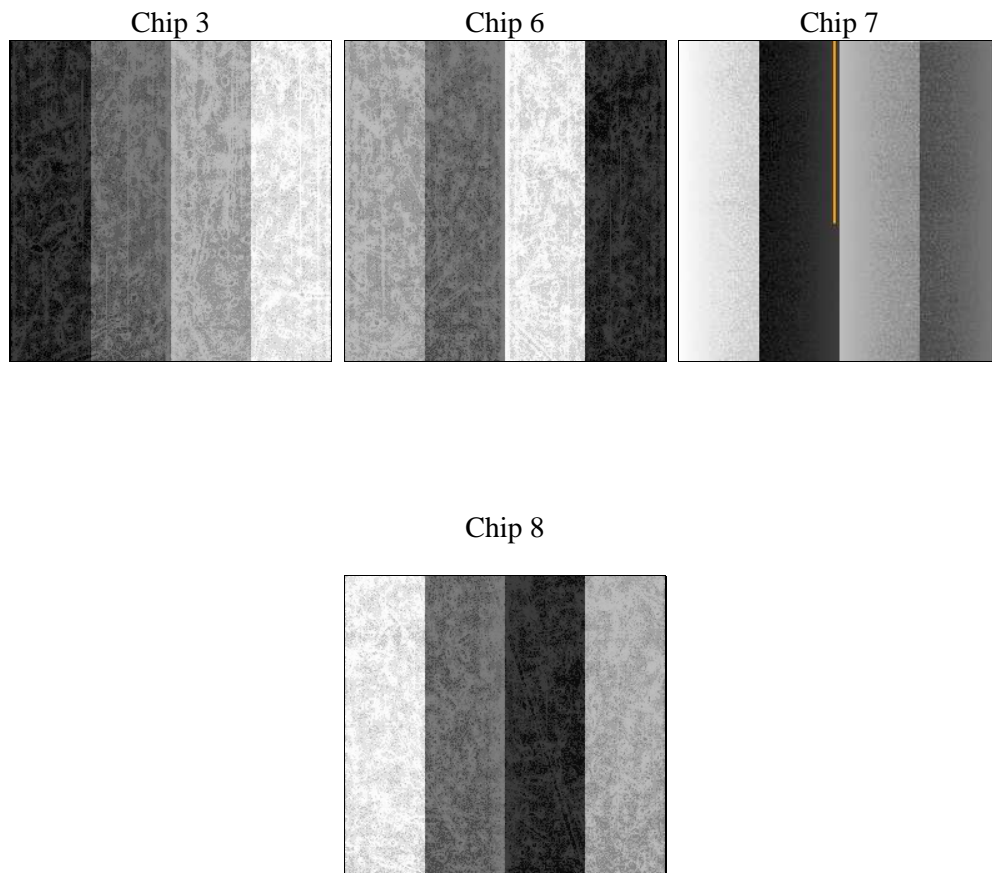
2 OBI

2.1 OBI

2.1.1 Images



2.1.2 Bias



2.1.3 Parameters

obi_num	0	Obi number	sched_exp_time	10000.000000	[s] Scheduled observation exposure time
ascdsver	10.6	Processing system revision	ontime	10067.795671105	Sum of GTIs [s]
caldsver	4.7.7	 	ontime3	10067.713591099	Sum of GTIs [s]
date	2017-12-21T19:46:36	Date and time of file creation	ontime6	10067.754631162	Sum of GTIs [s]
revision	1	Processing version of data	ontime7	10067.795671105	Sum of GTIs [s]
			ontime8	10067.672551155	Sum of GTIs [s]
			l1events	334804	Number of level 1 events

2.1.4 Events

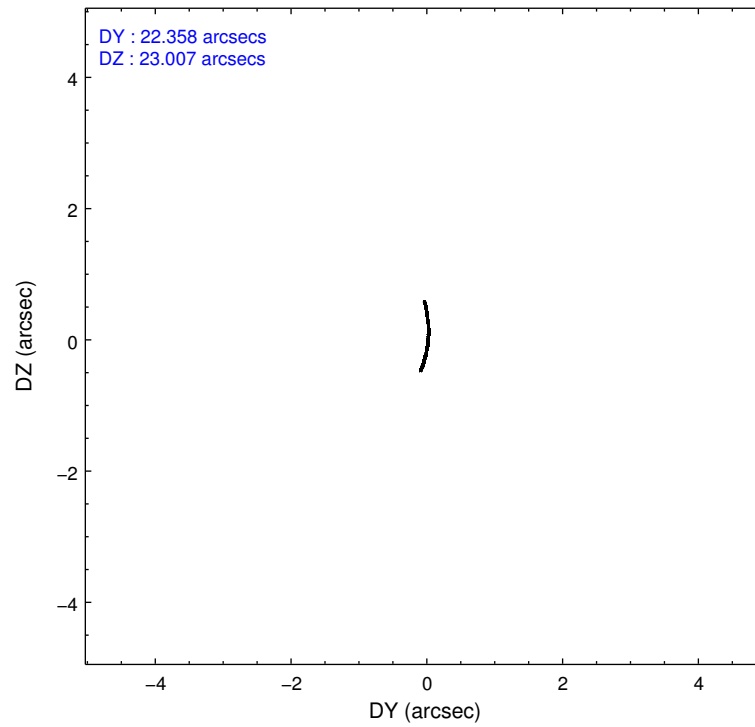
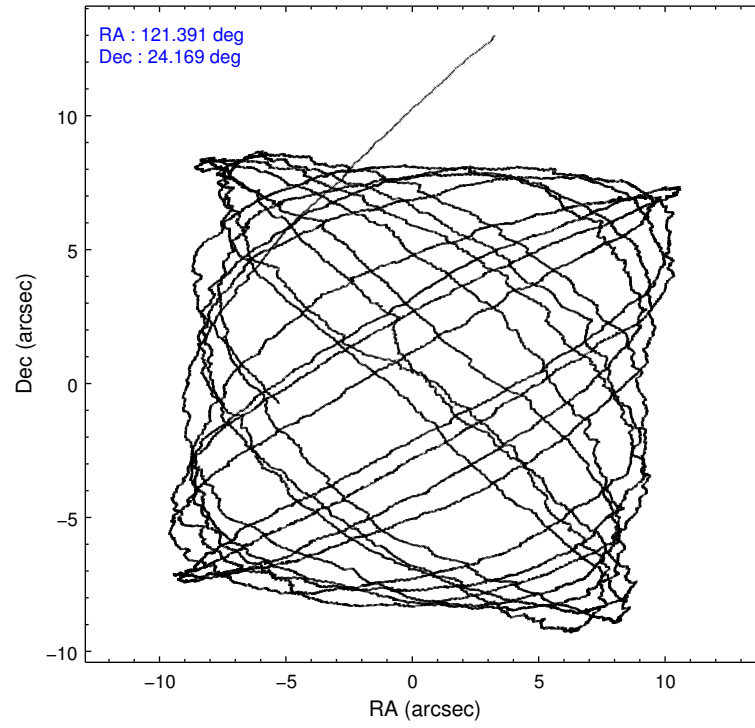
	ccd 3	ccd 6	ccd 7	ccd 8
level 1 events	68925	74919	94844	96116
rejected events	61547	66541	53378	69674
rejected %	89%	88%	56%	72%

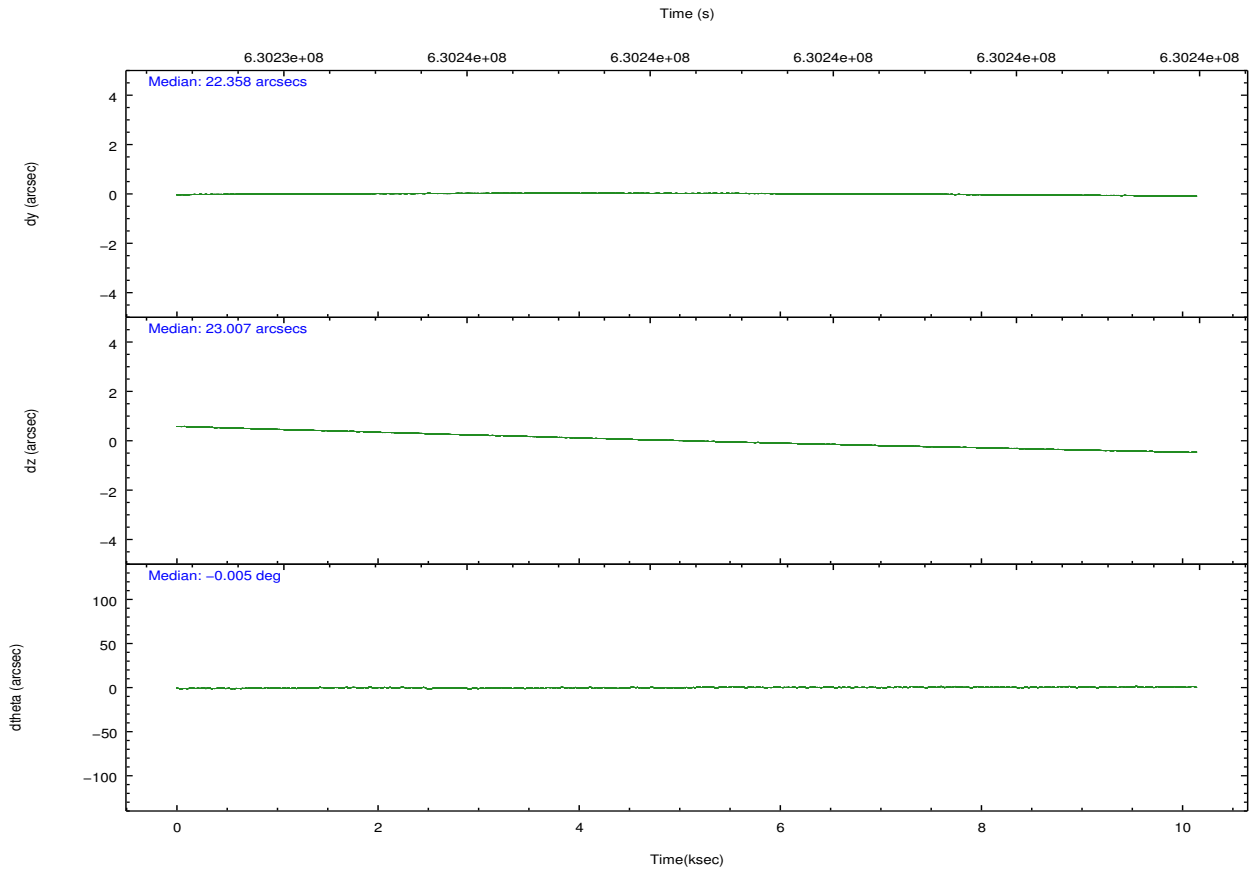
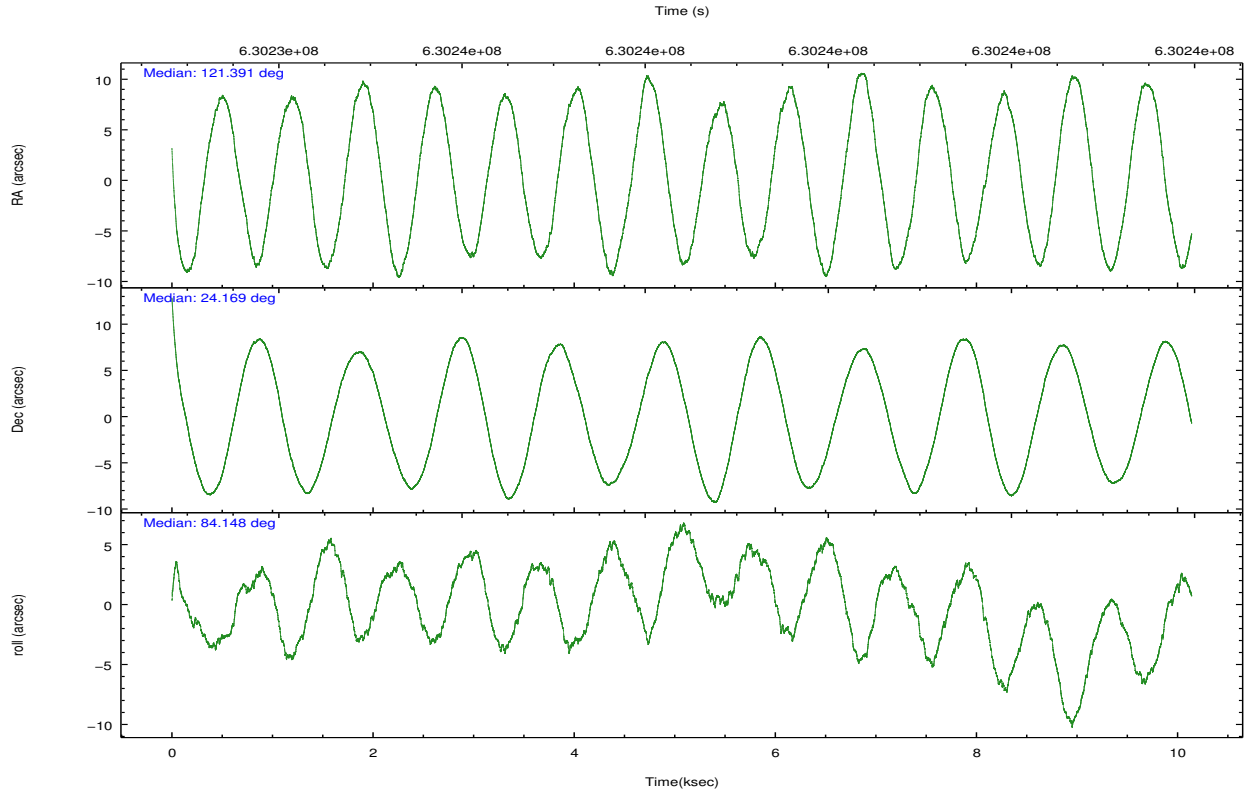
	ccd 3	ccd 6	ccd 7	ccd 8
grade 0 events	2583	2767	3625	7653
	3%	3%	3%	7%
grade 1 events	43	45	120	88
	0%	0%	0%	0%
grade 2 events	1648	1960	8841	6168
	2%	2%	9%	6%
grade 3 events	748	837	3342	2902
	1%	1%	3%	3%
grade 4 events	796	852	3392	2640
	1%	1%	3%	2%
grade 5 events	3351	3450	9521	5160
	4%	4%	10%	5%
grade 6 events	1605	1965	22300	7131
	2%	2%	23%	7%
grade 7 events	58151	63043	43703	64374
	84%	84%	46%	66%

2.2 Compared Parameters

Parameter	Planned	Actual	Parameter	Planned	Actual
Instrument	ACIS	ACIS	Obspar format version number	7	7
Detector	ACIS-3678	ACIS-3678	Obspar file type	PREDICTED	ACTUAL
Grating	NONE	NONE	Obspar update status	NONE	UPDATED
Data mode	VFAINT	VFAINT	CCD I0 on	N	N
Observation mode	POINTING	POINTING	CCD I1 on	N	N
[deg] Pointing RA	121.403794	121.3910712922697	CCD I2 on	N	N
[deg] Pointing Dec	24.144353	24.16927636319515	CCD I3 on	O1	Y
[deg] Pointing Roll	83.996746	84.15858141982655	CCD S0 on	N	N
[mm] SIM focus pos	-0.684267	-0.6828225247311905	CCD S1 on	N	N
[mm] SIM defocus	0	0.001444936568705701	CCD S2 on	Y	Y
[mm] SIM translation stage pos	-190.132523	-190.1400660498719	CCD S3 on	Y	Y
[mm] SIM translation stage offset	0	0.00754346686406393	CCD S4 on	O2	Y
[s] Observation start time (MET)	630233462.184000	630231702.49793	CCD S5 on	N	N
Observation start date	2017-12-21T08:49:53	2017-12-21T08:21:42	Number of optional ACIS chips dropped	0	0
[s] Observation end time (MET)	630243462.184000	630244251.57367	On-chip summing requested	N	N
Observation end date	2017-12-21T11:36:33	2017-12-21T11:50:51	Subarray requested	NONE	NONE
Read mode	TIMED	TIMED	Alternating exposures requested	N	N
			[s] Primary exposure time	0.000000	3.1

2.3 Aspect



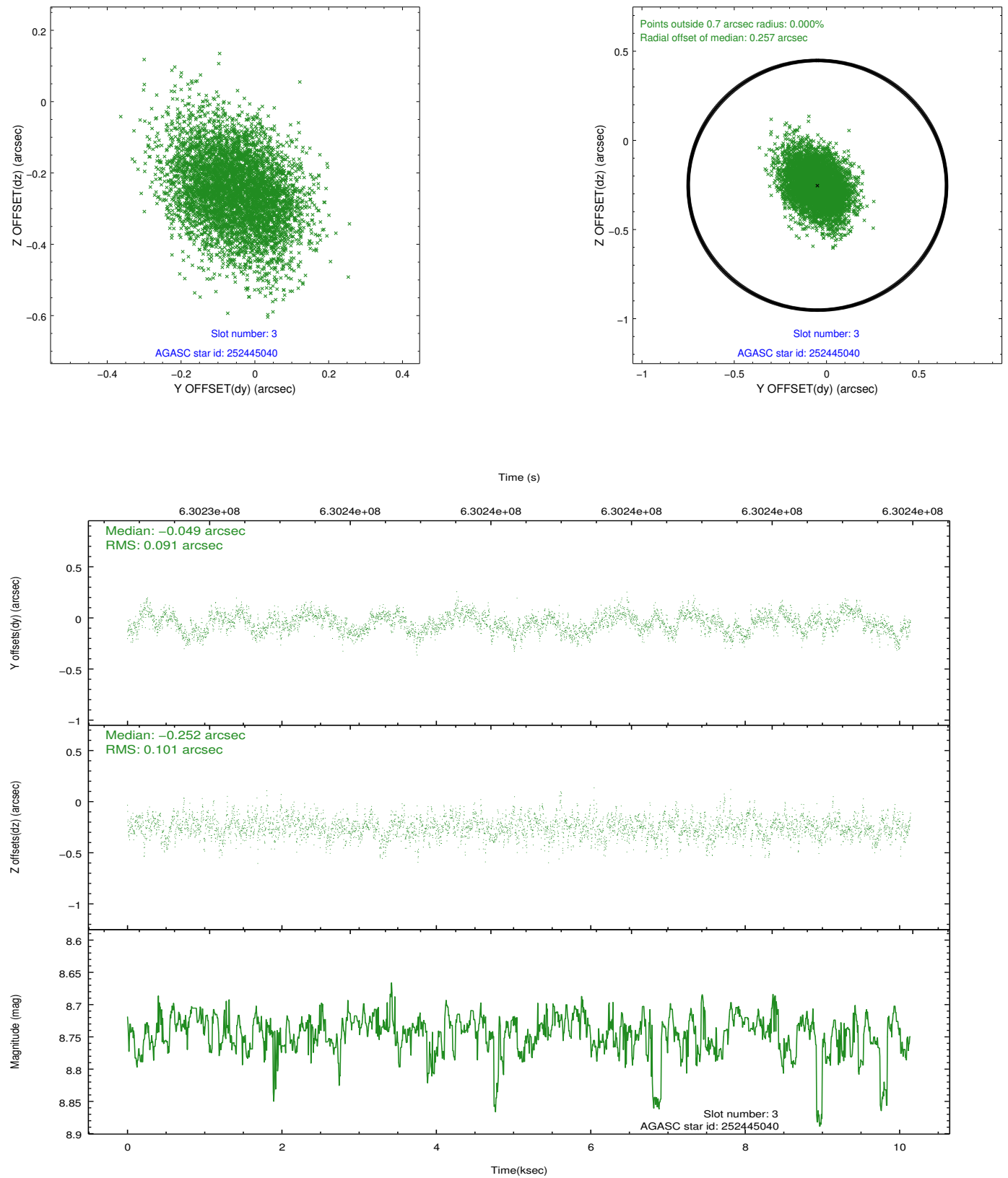


Slot Statistics

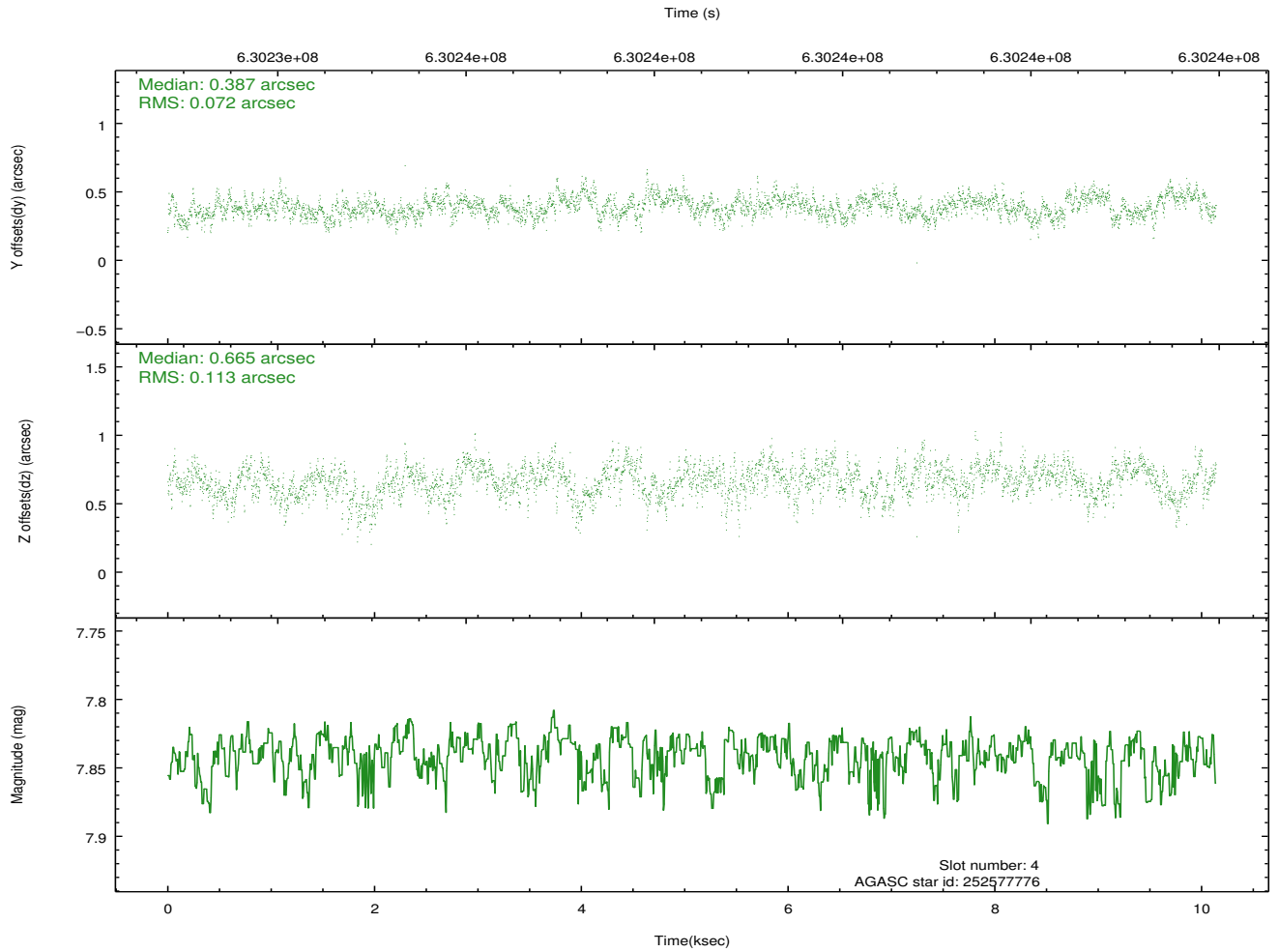
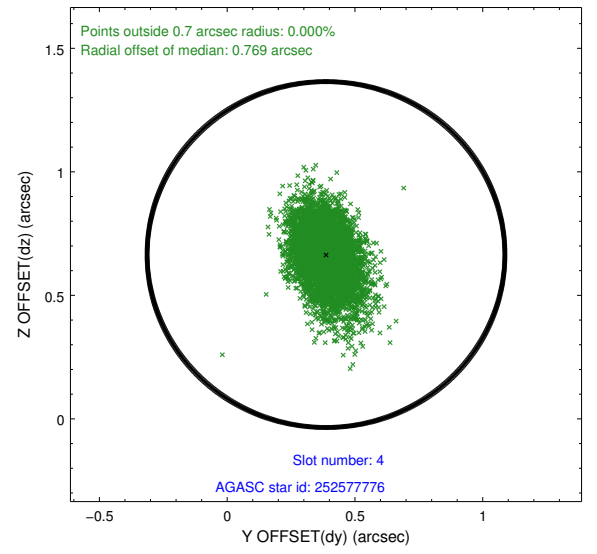
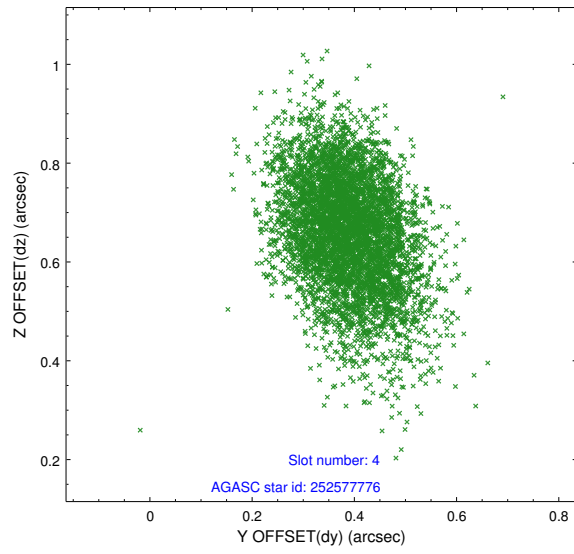
slot	status	used	id	mag	n_pts	med_dy	med_dz	dr1	dr2	ra	dec	mean_y	mean_z
0	FID		ACIS-S-2	7.00	2474	-0.229	-0.147	0.011	0.018	0.000000	0.000000	-775.72	-1744.78
1	FID		ACIS-S-4	7.10	2474	0.536	0.150	0.006	0.011	0.000000	0.000000	2138.05	163.50
2	FID		ACIS-S-5	7.11	2474	-0.337	0.005	0.010	0.017	0.000000	0.000000	-1828.04	157.56
3	GUIDE	used	252445040	8.74	4941	-0.049	-0.252	0.143	0.239	120.948183	24.372625	663.40	1571.61
4	GUIDE	used	252577776	7.84	4946	0.387	0.665	0.138	0.237	121.963441	24.018102	-255.26	-1877.07
5	GUIDE	used	252978608	6.90	4948	-0.156	-0.453	0.116	0.204	121.037358	24.508140	1178.20	1330.16
6	GUIDE	used	253108144	8.71	4942	-0.222	0.063	0.145	0.239	121.921909	24.738762	2309.03	-1460.25
7	GUIDE	used	253108456	8.83	4922	0.039	-0.024	0.168	0.296	122.025353	24.715177	2261.95	-1806.37

2.4 Star Slots

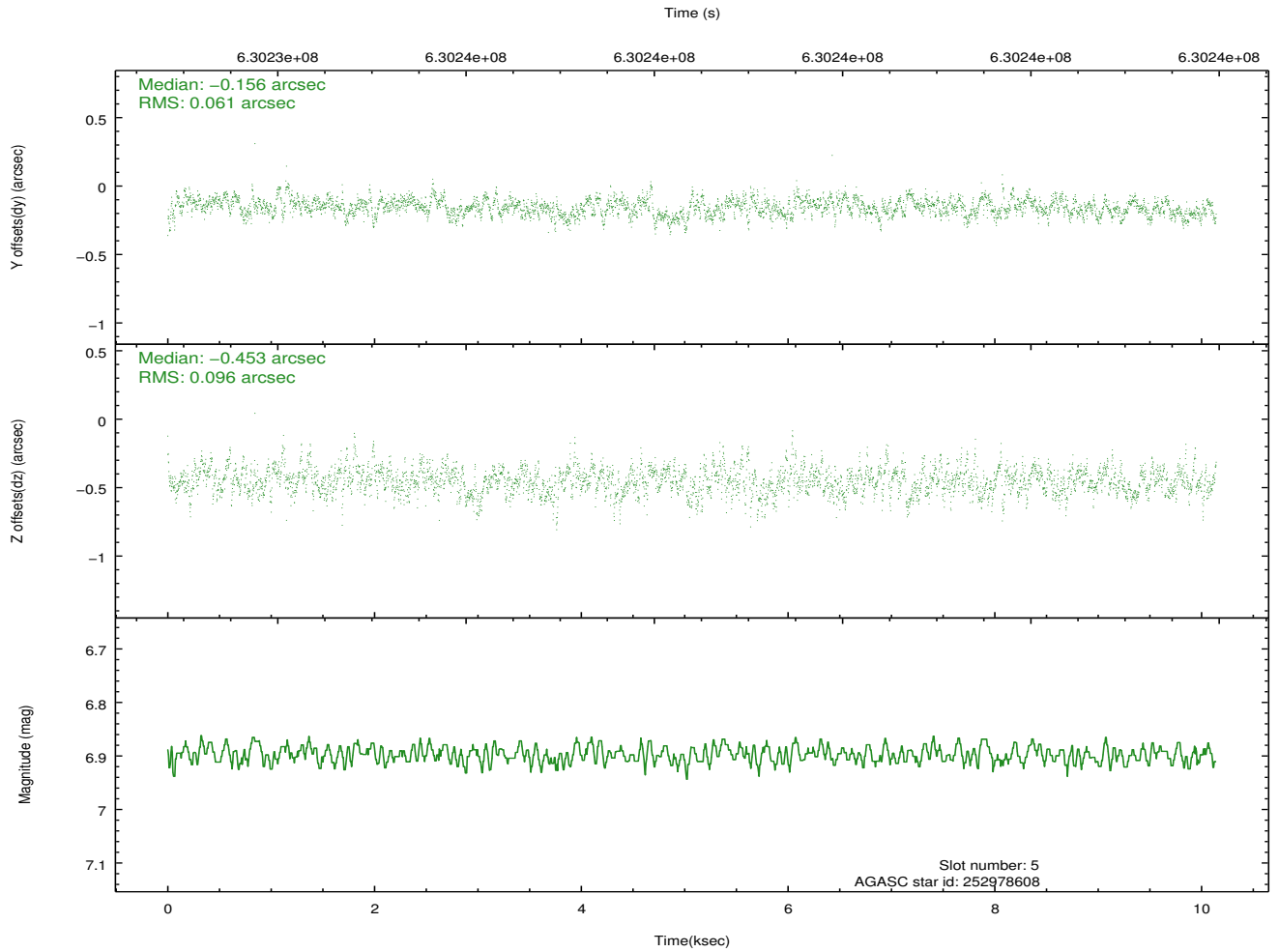
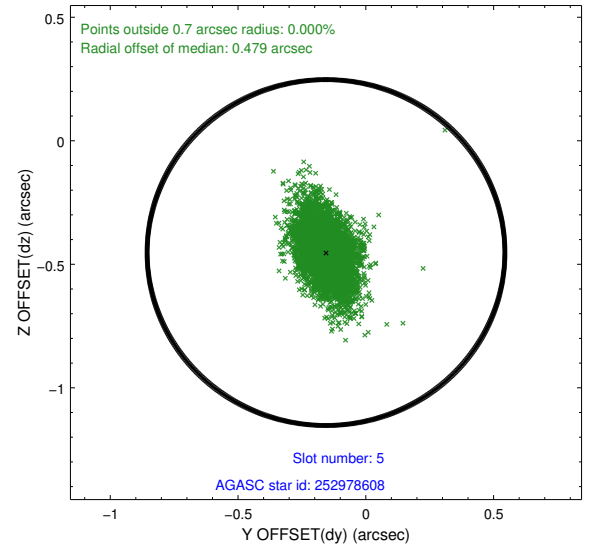
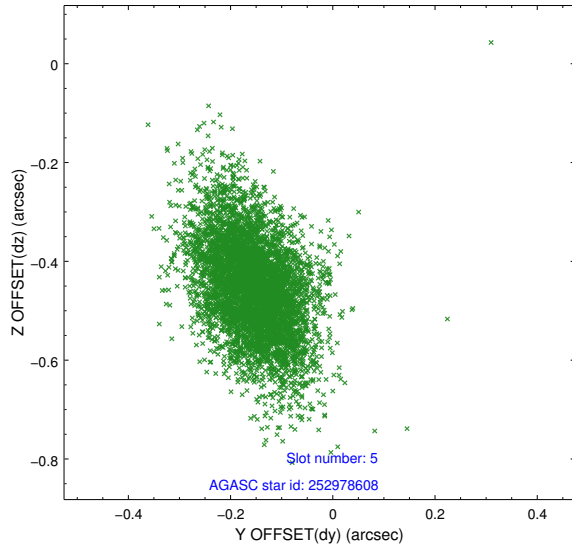
2.4.1 Slot 3



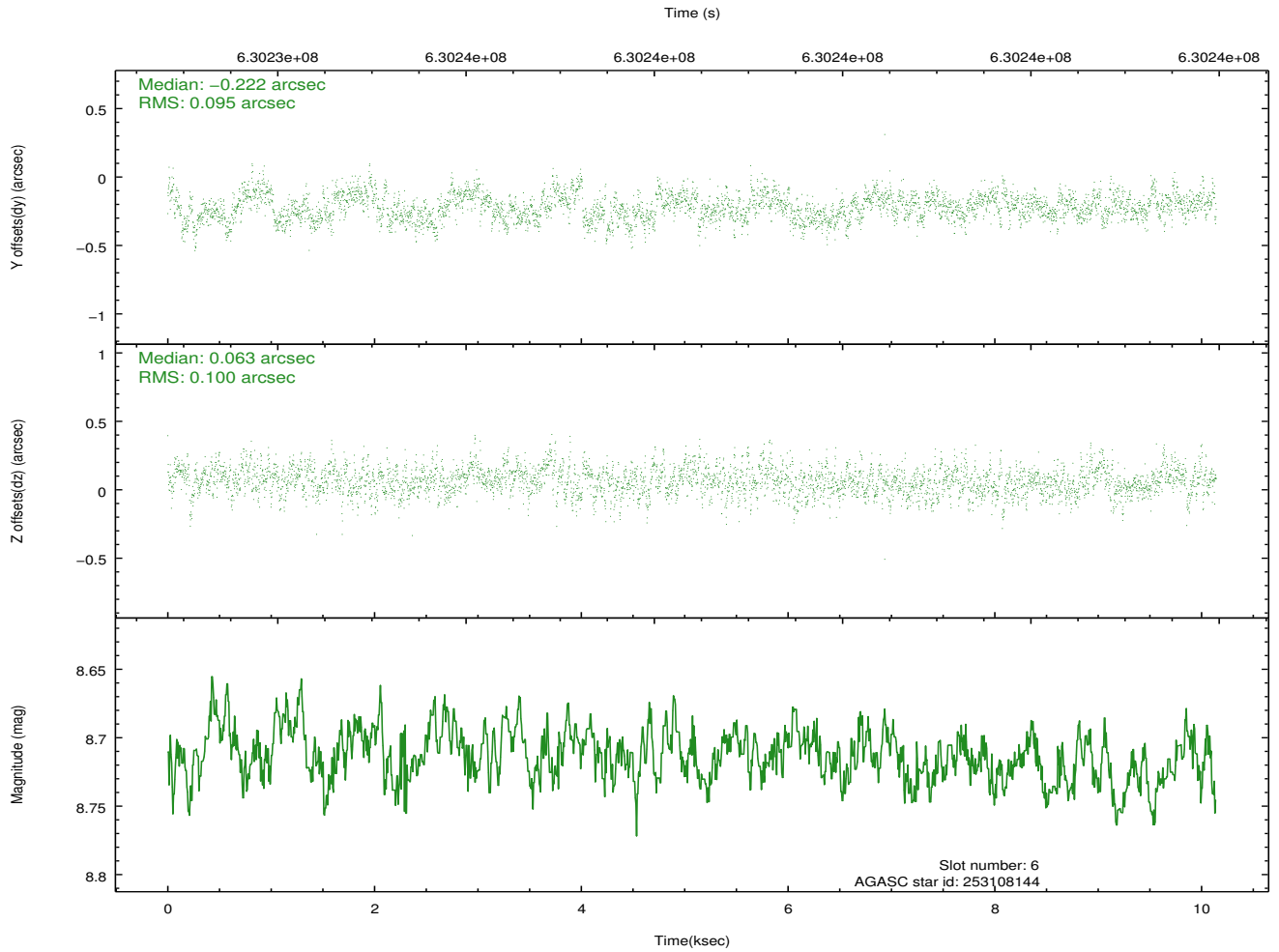
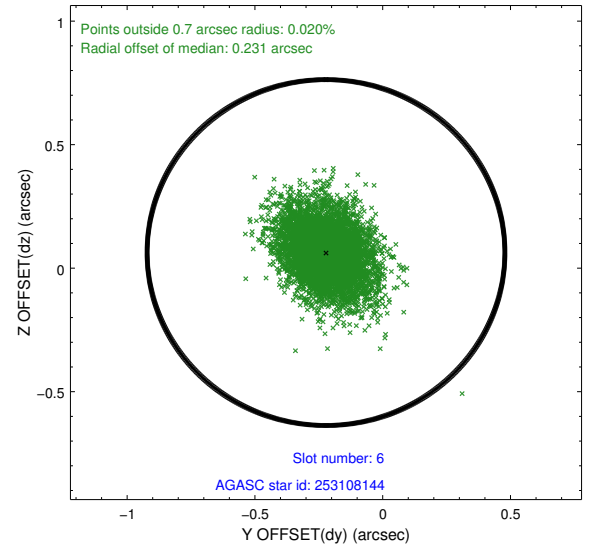
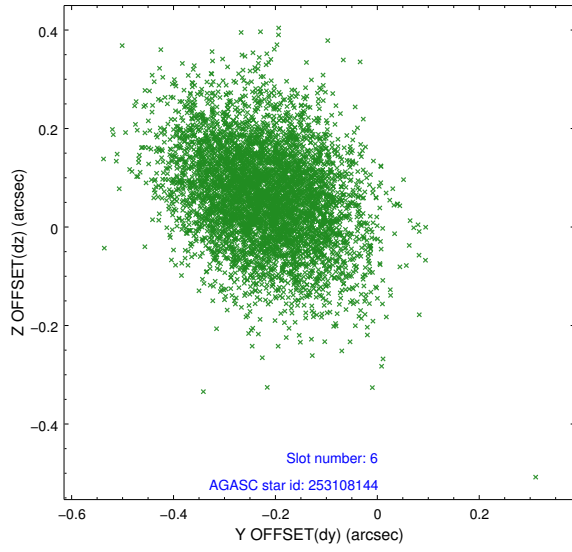
2.4.2 Slot 4



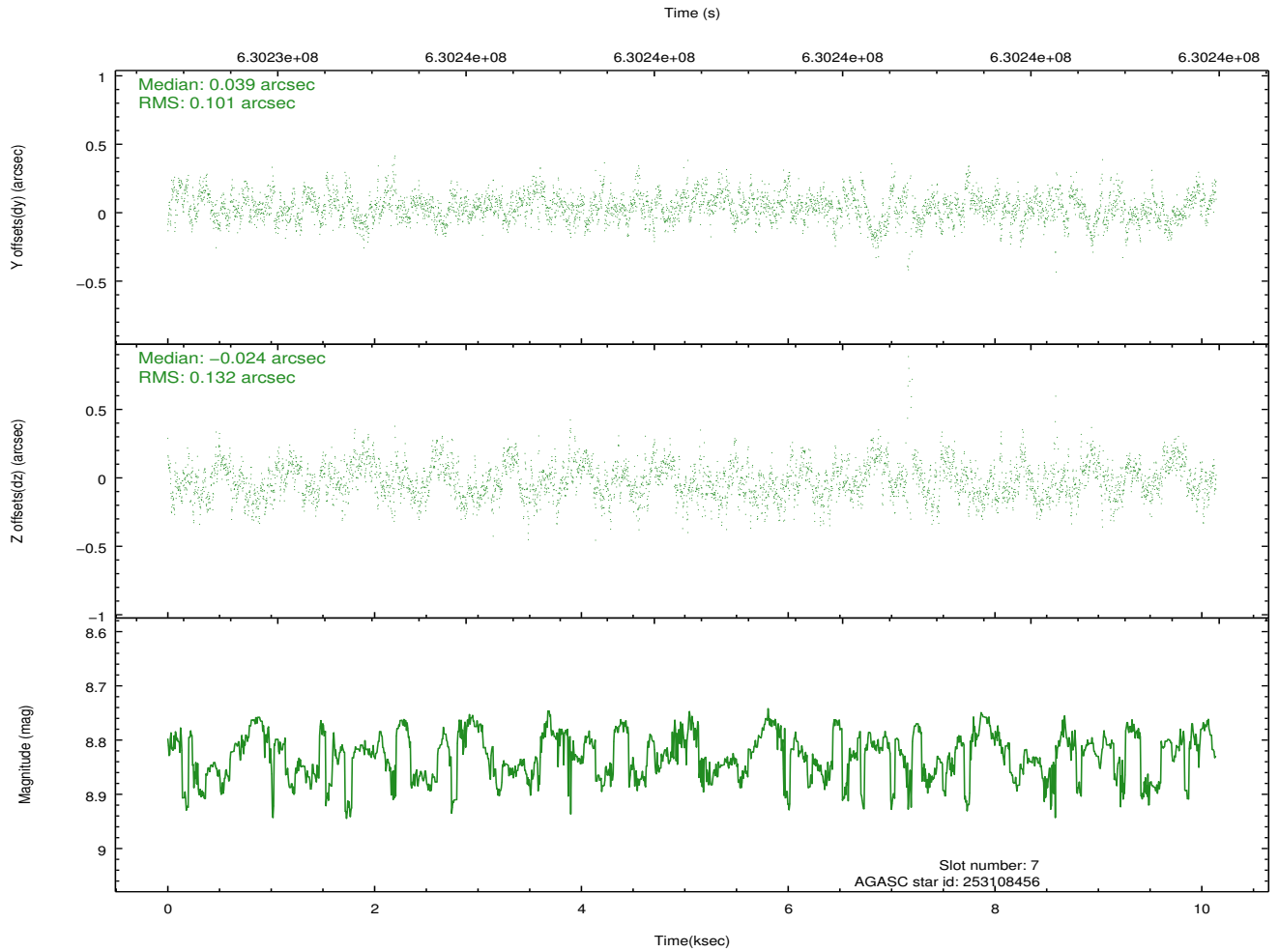
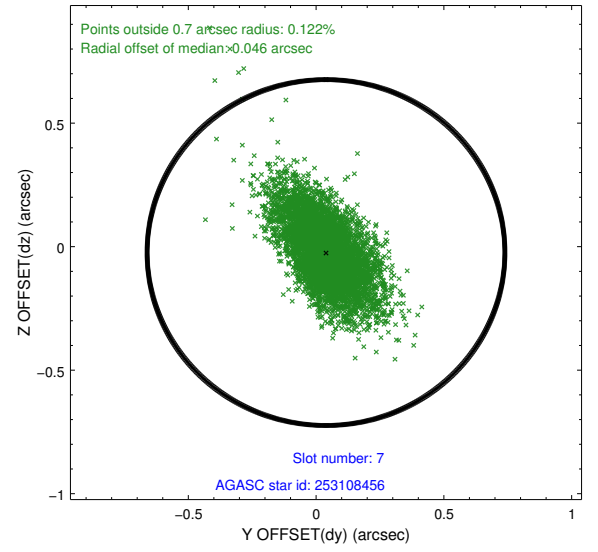
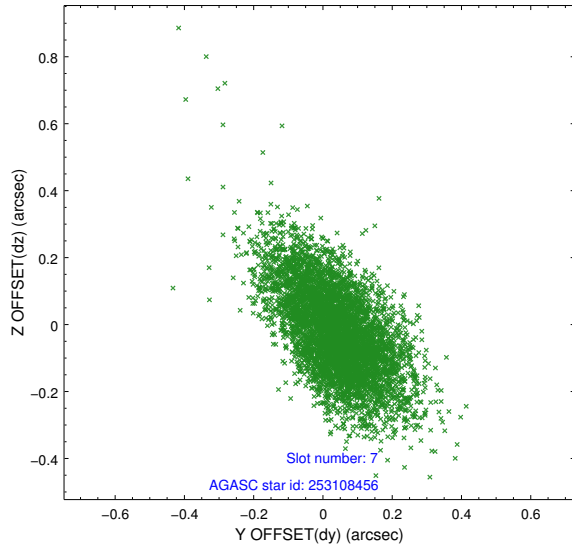
2.4.3 Slot 5



2.4.4 Slot 6

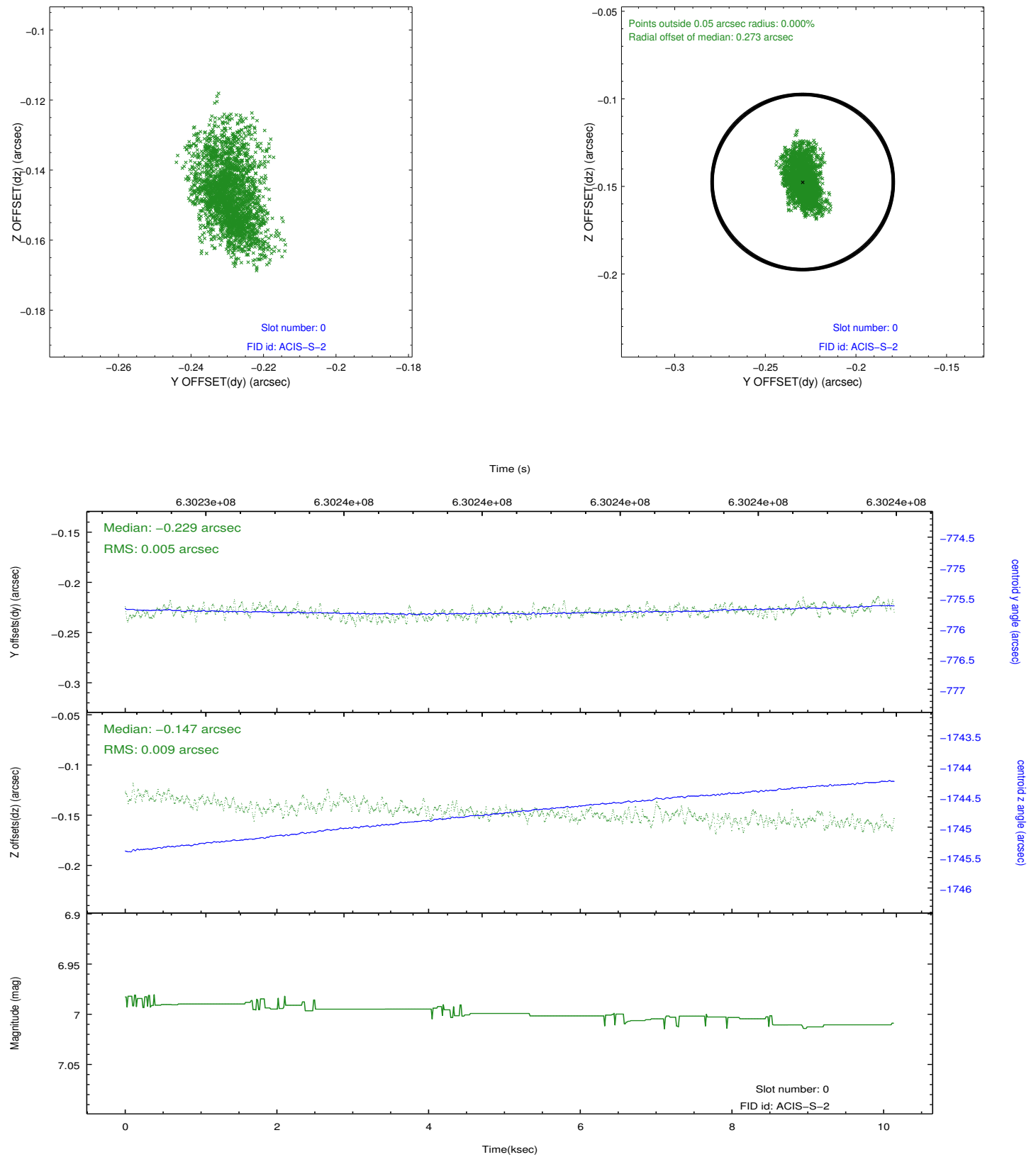


2.4.5 Slot 7

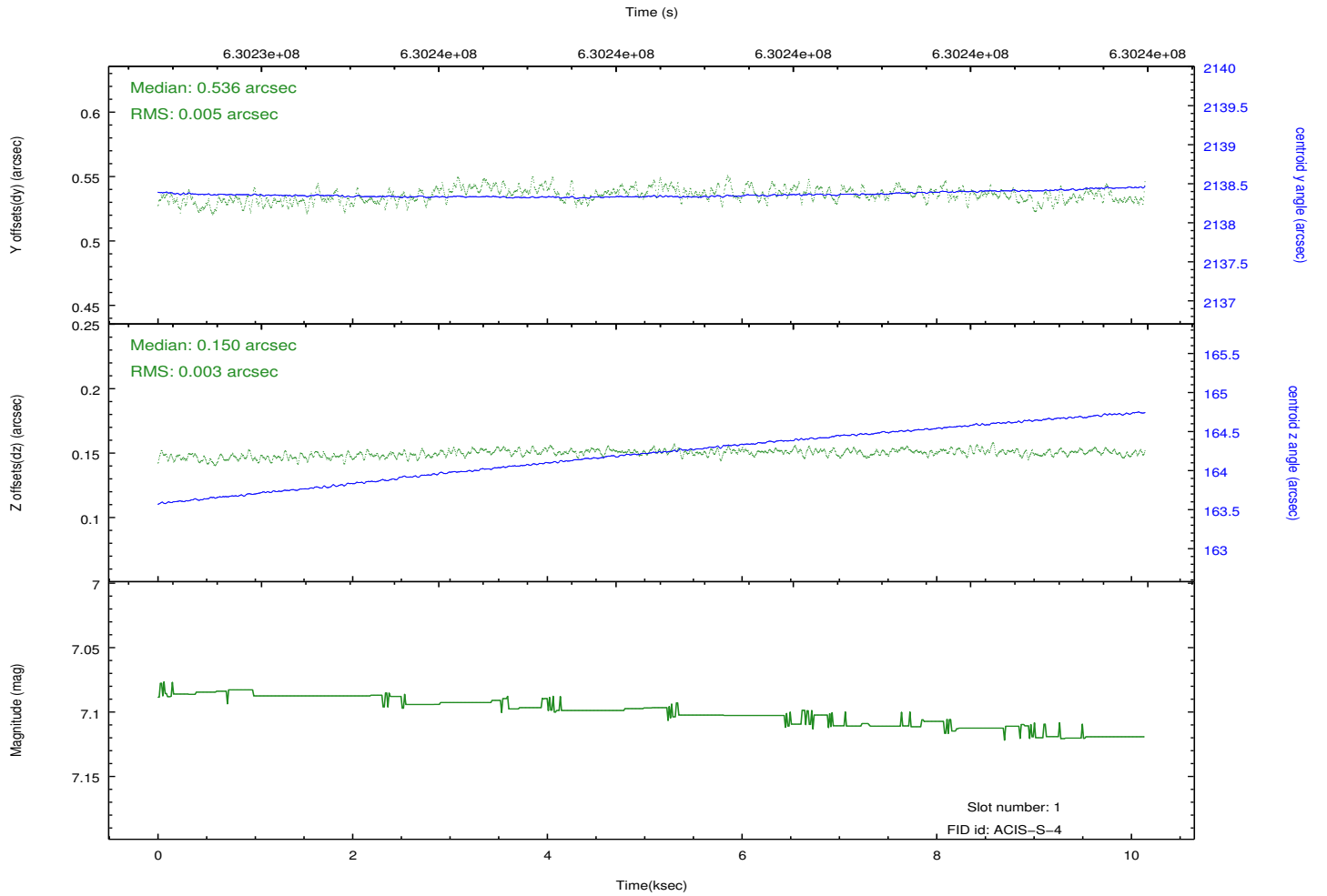
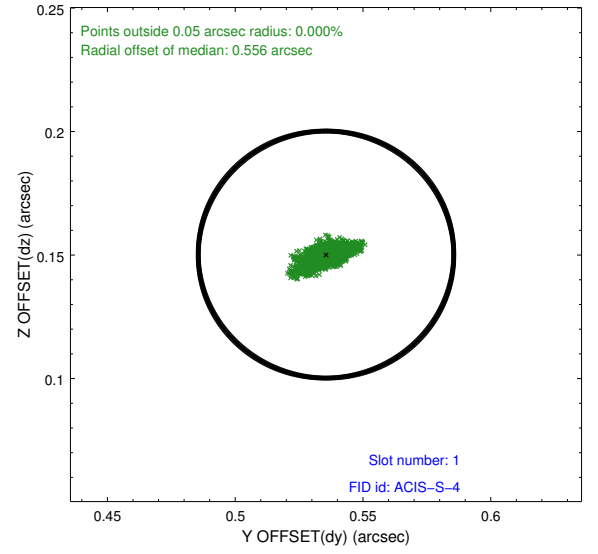
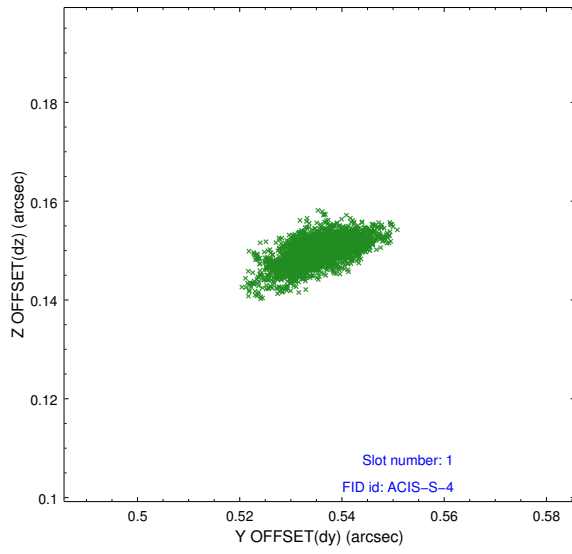


2.5 FID Slots

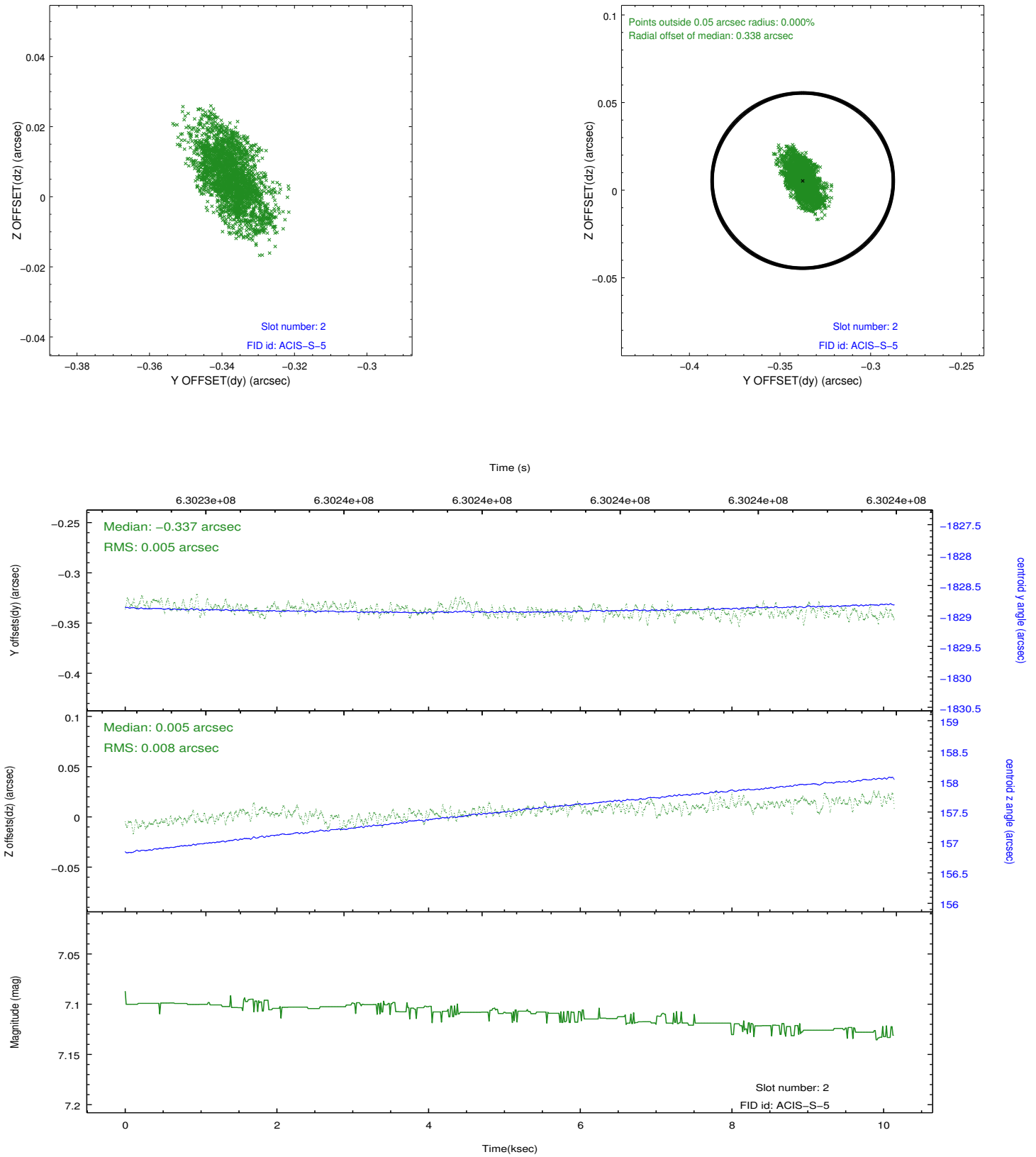
2.5.1 Slot 0



2.5.2 Slot 1



2.5.3 Slot 2



A Summary

A.1 Status

V&V Scientist	Jen Lauer
V&V Date (YYYY-MM-DD)	2017.12.22
V&V Edition	1
V&V Disposition and Status	OK
V&V Charge Time	10.067795671105

A.2 Comments

Roll preference met.