

V&V Reference Report

L2 ASCDS Version : 10.6

Observation 20878 - L2 Version 1
Chandra X-Ray Center

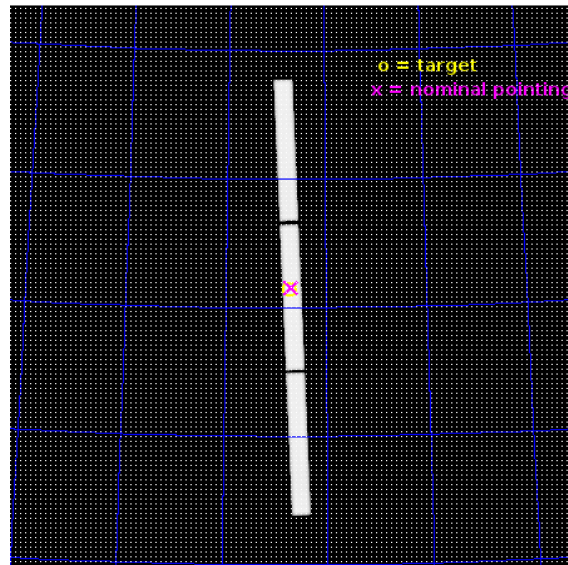
L2 Processing Date : Dec 11 2017

Contents

1	Front	2
2	OBI	3
2.1	OBI	3
2.1.1	Images	3
2.1.2	Parameters	4
2.1.3	Events	4
2.2	Compared Parameters	5
2.3	Aspect	6
2.4	Star Slots	9
2.4.1	Slot 3	9
2.4.2	Slot 4	10
2.4.3	Slot 5	11
2.4.4	Slot 6	12
2.4.5	Slot 7	13
2.5	FID Slots	14
2.5.1	Slot 0	14
2.5.2	Slot 1	15
2.5.3	Slot 2	16
3	Gratings	17
3.1	LETG Arm	17
A	Summary	19
A.1	Status	19
A.2	Comments	19

1 Front

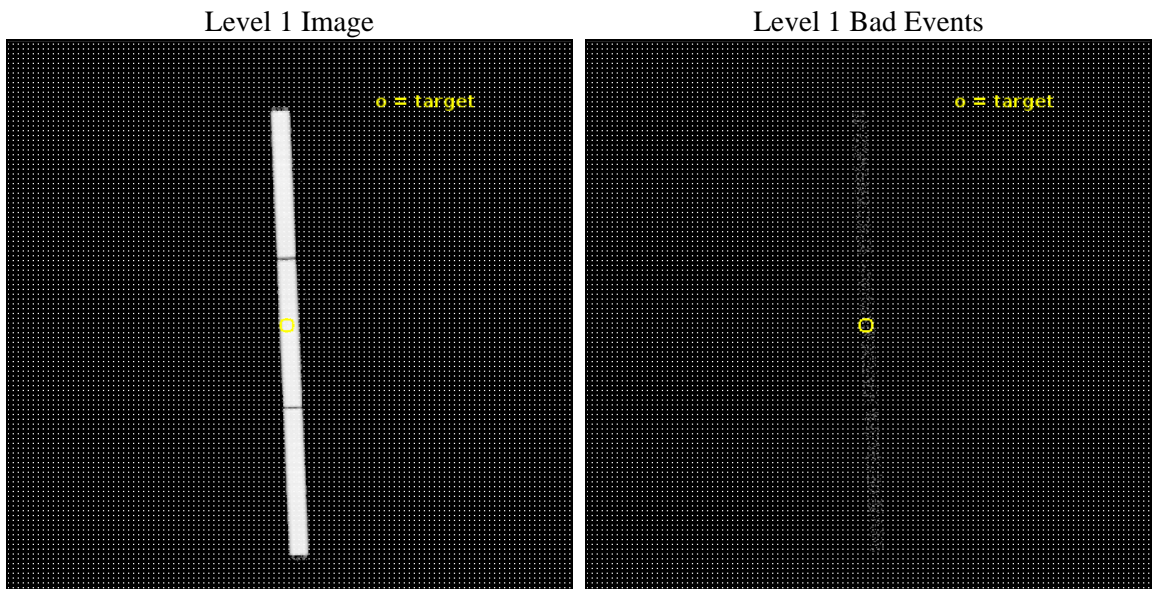
seq_num	703367	Sequence number
obs_id	20878	Observation id
title	The origin of variability in NGC 3516: obscuring disk wind?	Propos
observer	Missagh Mehdipour	Principal investigator
object	NGC 3516	Source name
ra_targ	166.697917	Observer's specified target RA [deg]
dec_targ	72.568611	Observer's specified target Dec [deg]
ra_nom	166.67869792931	Nominal RA [deg]
dec_nom	72.577252699388	Nominal Dec [deg]
roll_nom	87.585668091613	Nominal Roll [deg]
revision	1	Processing version of data
ontime	21173.426243901	[s]
livetime	20976.406464278	Ontime multiplied by DTCOR
l2events	1762389	Number of level 2 events



2 OBI

2.1 OBI

2.1.1 Images



2.1.2 Parameters

obi_num	0	Obi number	sched_exp_time	21000.000000	[s] Scheduled observation exposure time
ascdsver	10.6	Processing system revision	ontime	21173.426243901	[s]
caldsver	4.7.6	 	l1events	2217499	Number of level 1 events
date	2017-12-11T16:47:56	Date and time of file creation	tgmethod	TGDETECT	Method used to create src1a file
revision	1	Processing version of data	zo_pos	(32603.46, 32528.60)	src1a sky pixel position

2.1.3 Events

Level 1 Events

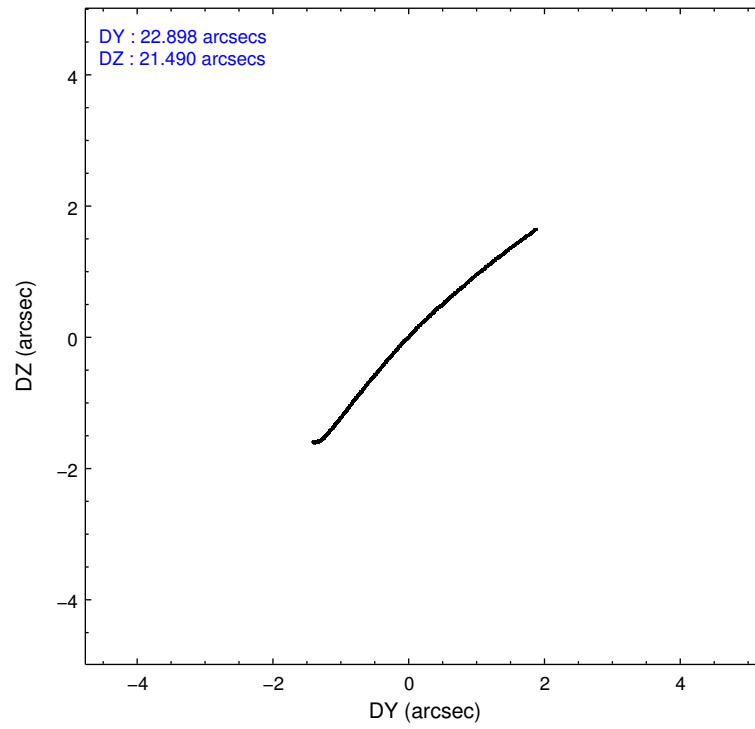
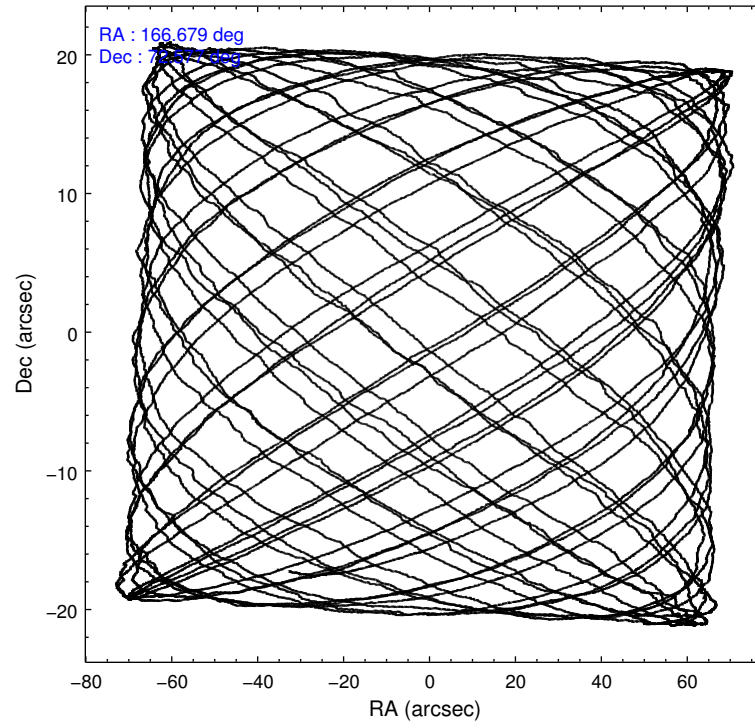
	segment 1	segment 2	segment 3
level 1 events	740330	738831	738338
rejected events	9741	9811	9788
rejected %	1%	1%	1%

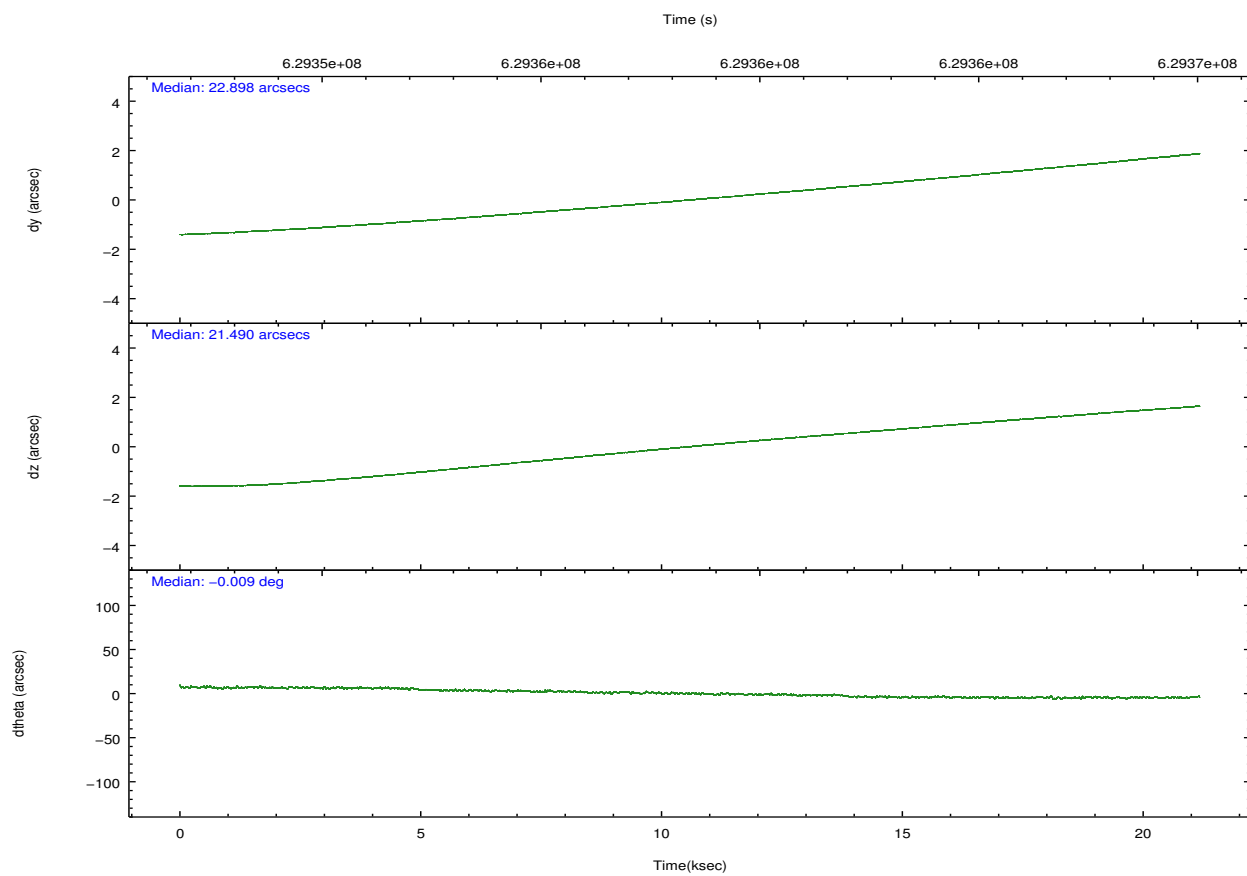
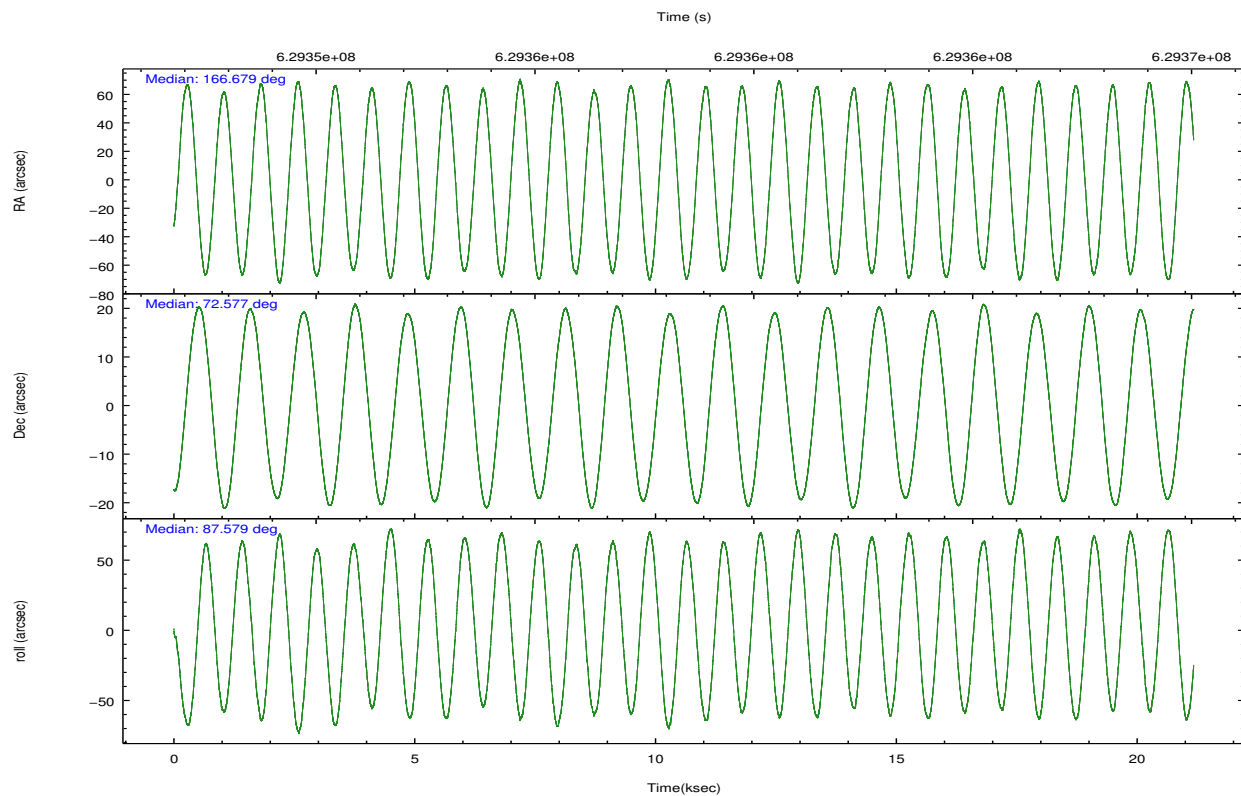
2.2 Compared Parameters

Parameter	Planned	Actual
Instrument	HRC	HRC
Detector	HRC-S	HRC-S
Grating	LETG	LETG
Data mode	OBSERVING	OBSERVING
Observation mode	POINTING	POINTING
[deg] Pointing RA	166.727196	166.6786979293063
[deg] Pointing Dec	72.552326	72.57725269938787
[deg] Pointing Roll	87.472065	87.58566809161252
[mm] SIM focus pos	-1.429586	-1.428180813131781
[mm] SIM defocus	0.1037507710433287	0.1051558262725154
[mm] SIM translation stage pos	250.455976	250.466033080201
[mm] SIM translation stage offset	0	-0.01005468664627074
[s] Observation start time (MET)	629348010.184000	629347352.9459701
Observation start date	2017-12-11T02:52:21	2017-12-11T02:42:32
[s] Observation end time (MET)	629369010.184000	629369685.13478
Observation end date	2017-12-11T08:42:21	2017-12-11T08:54:45

Parameter	Planned	Actual
Obspar format version number	7	7
Obspar file type	PREDICTED	ACTUAL
Obspar update status	NONE	UPDATED

2.3 Aspect



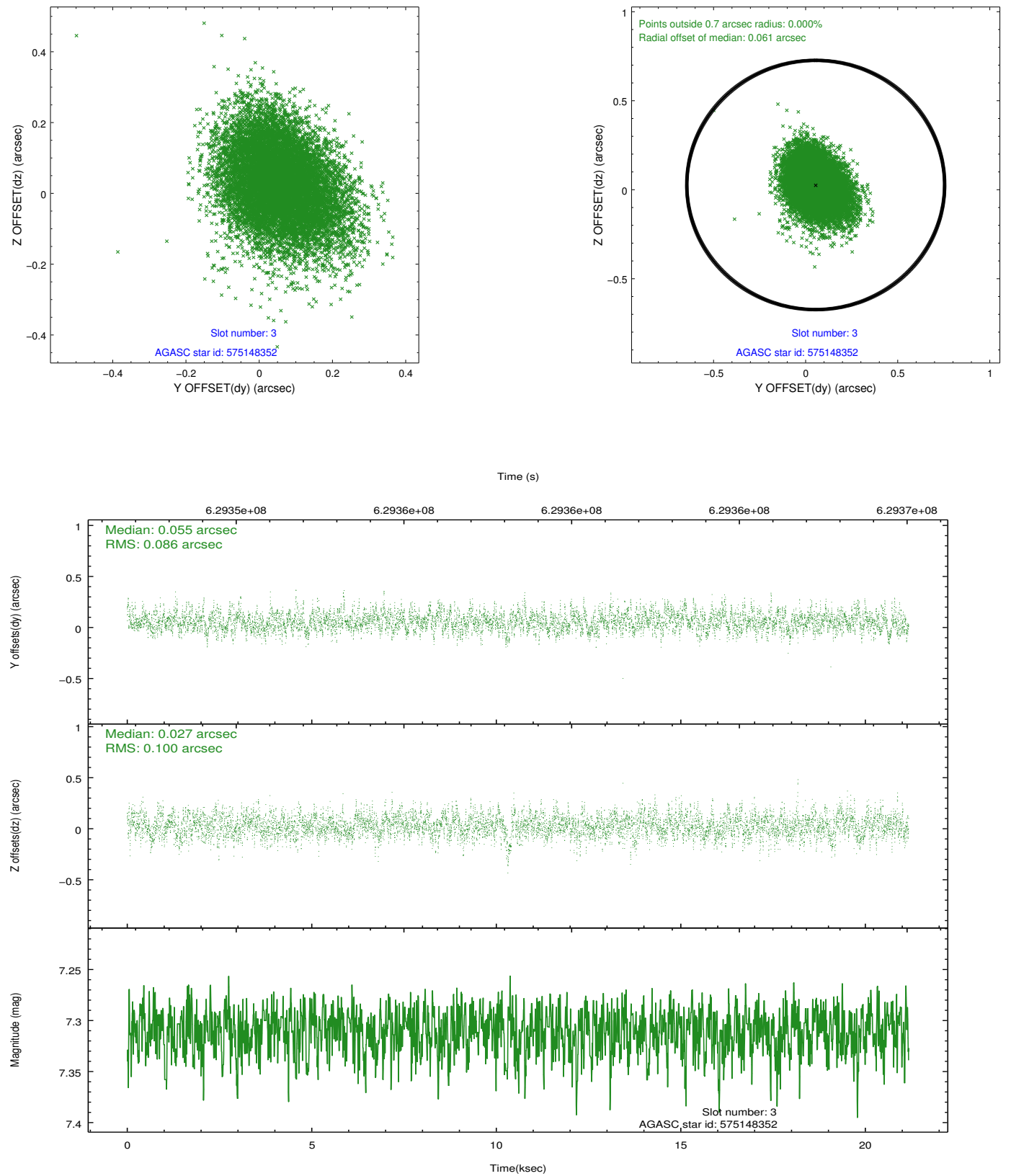


Slot Statistics

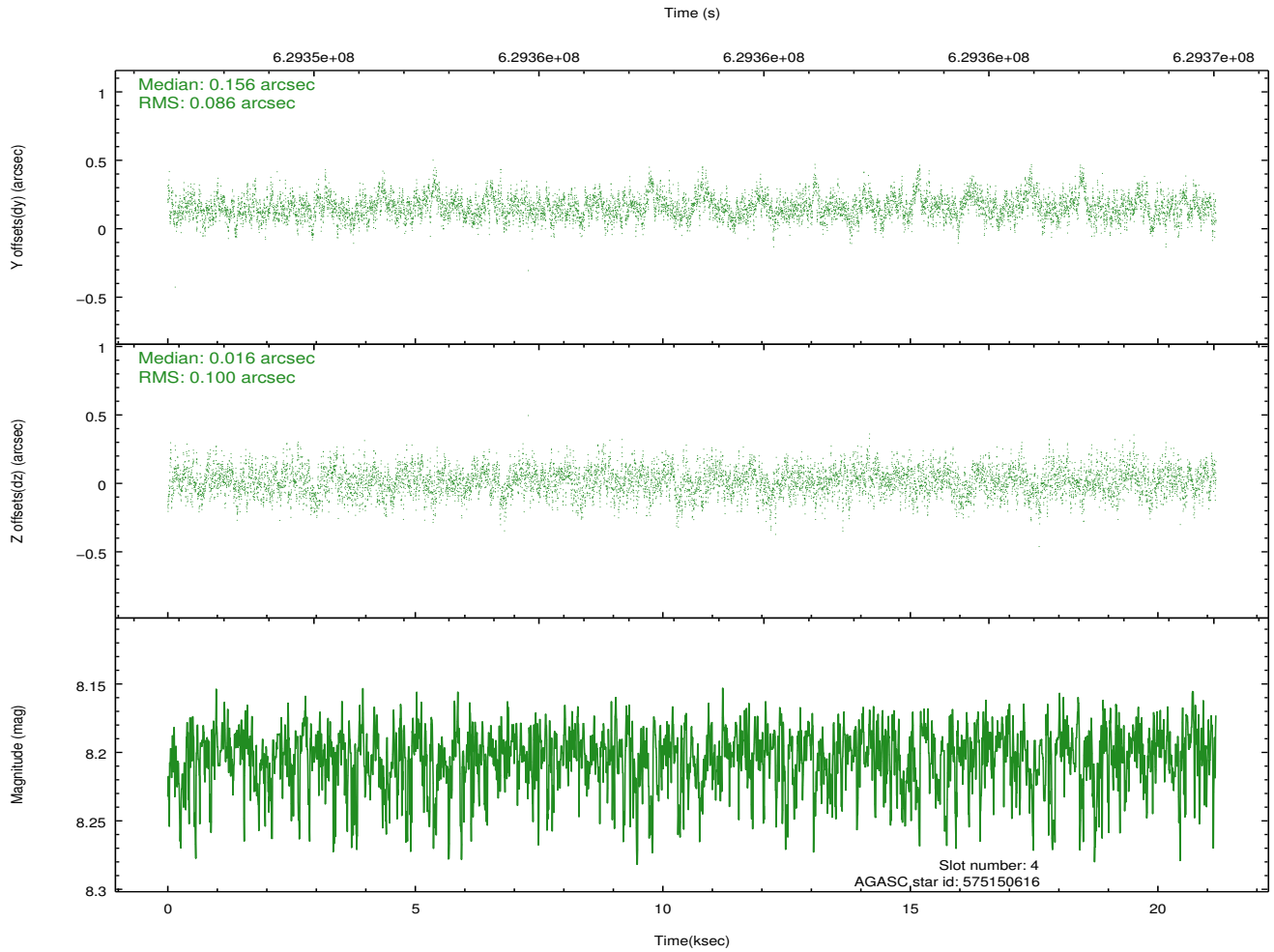
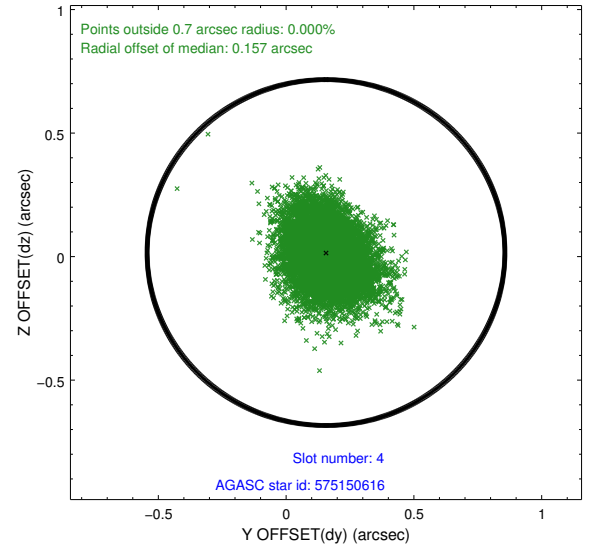
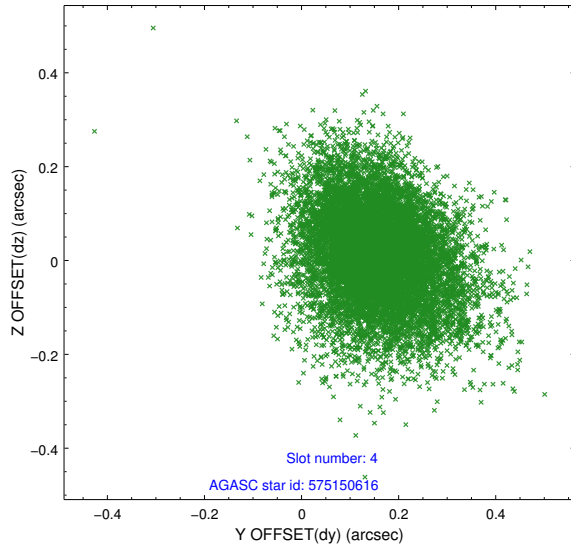
slot	status	used	id	mag	n_pts	med_dy	med_dz	dr1	dr2	ra	dec	mean_y	mean_z
0	FID		HRC-S-1	7.08	5165	-0.086	-0.177	0.037	0.079	0.000000	0.000000	-1177.69	-470.67
1	FID		HRC-S-2	7.05	5164	0.433	-0.138	0.019	0.027	0.000000	0.000000	1222.28	-463.12
2	FID		HRC-S-3	7.06	5165	0.041	0.012	0.047	0.086	0.000000	0.000000	-1180.14	559.00
3	GUIDE	used	575148352	7.31	10330	0.055	0.027	0.139	0.229	167.090916	71.958979	-2114.72	-498.55
4	GUIDE	used	575150616	8.20	10323	0.156	0.016	0.138	0.232	167.218511	72.045663	-1795.16	-624.66
5	GUIDE	used	575541080	8.94	10323	-0.297	0.685	0.189	0.314	167.870403	73.115273	2088.80	-1102.91
6	GUIDE	used	575541344	9.34	10199	-0.128	-0.894	0.230	0.371	166.947366	72.953762	1454.97	-168.75
7	GUIDE	used	576067400	8.07	10321	0.203	0.165	0.151	0.244	168.743801	72.008418	-1818.80	-2324.10

2.4 Star Slots

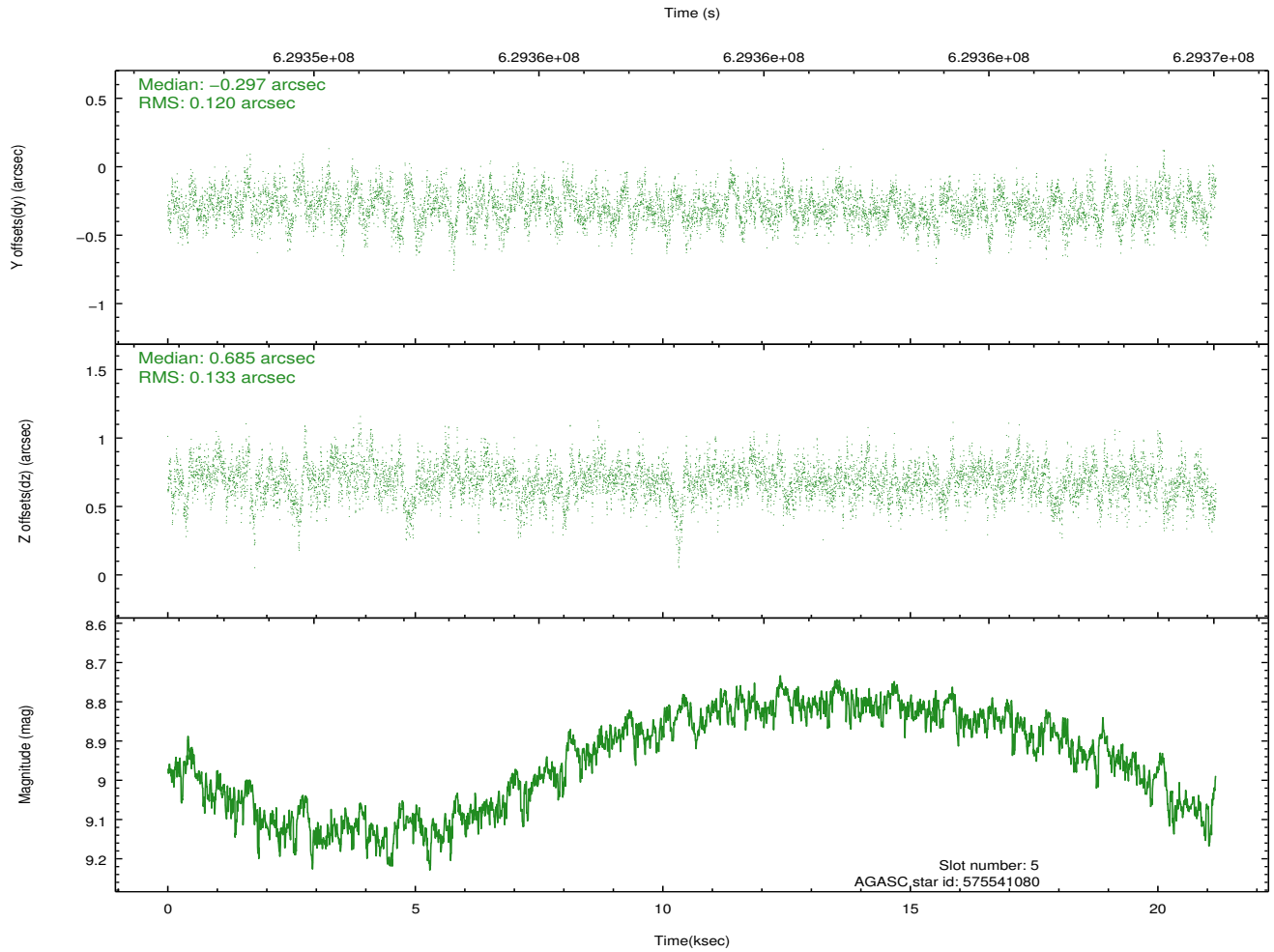
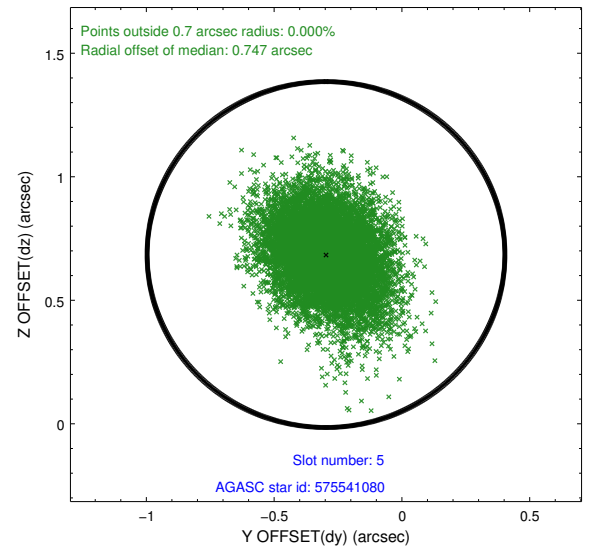
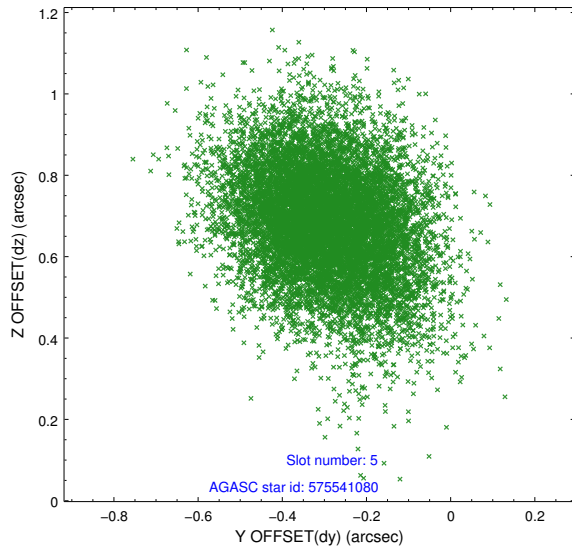
2.4.1 Slot 3



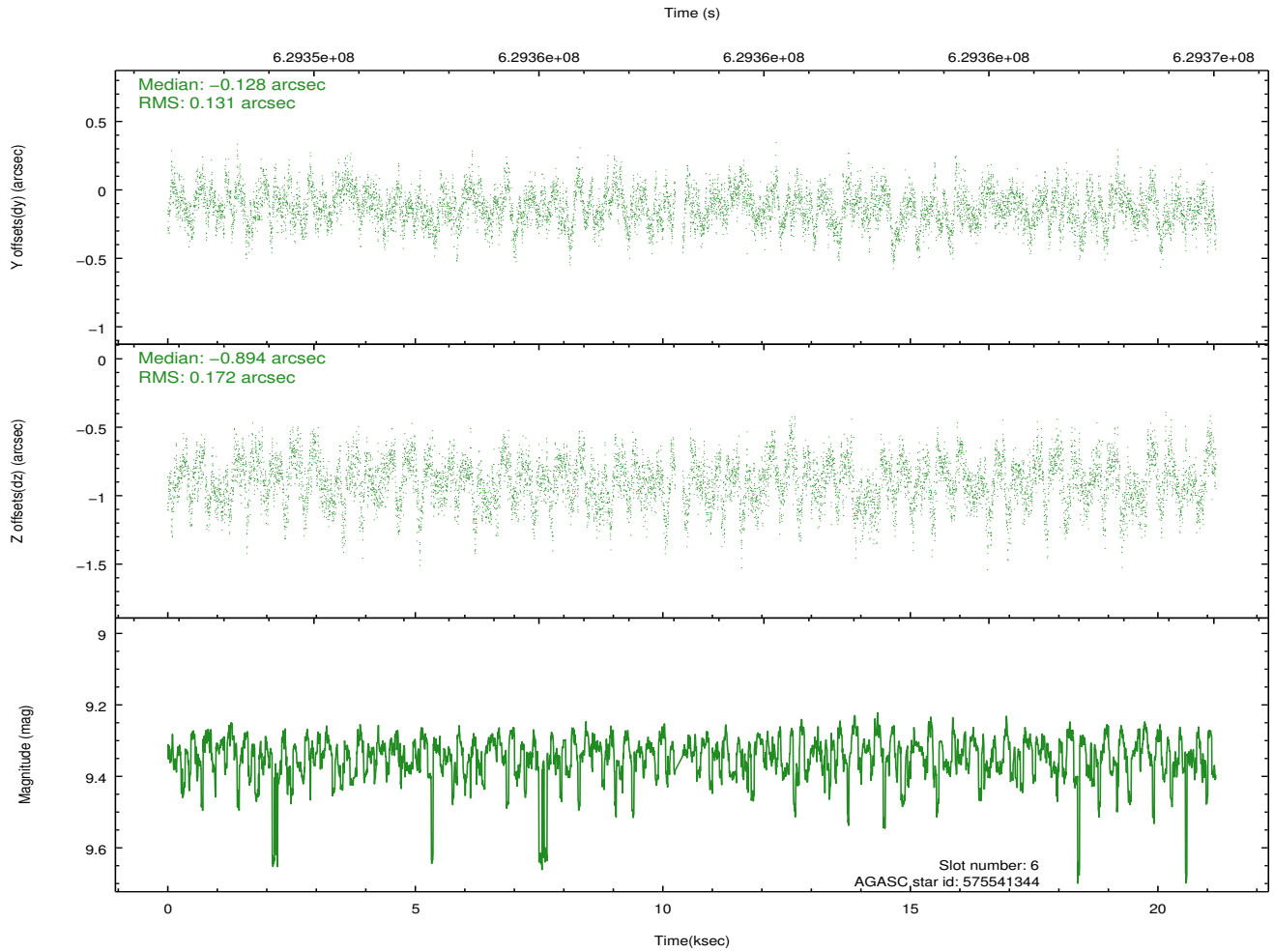
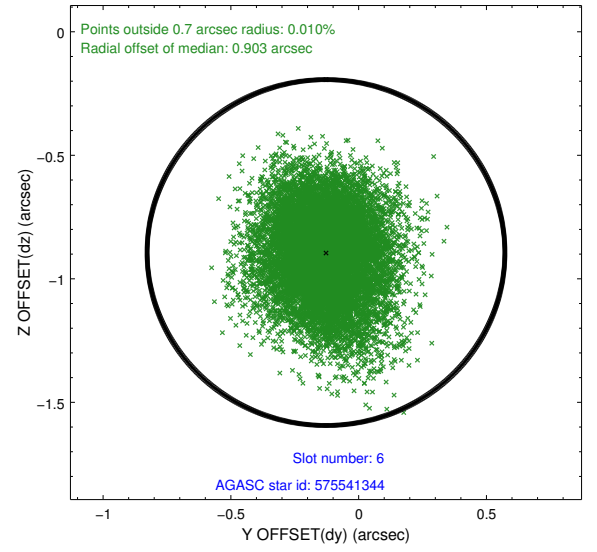
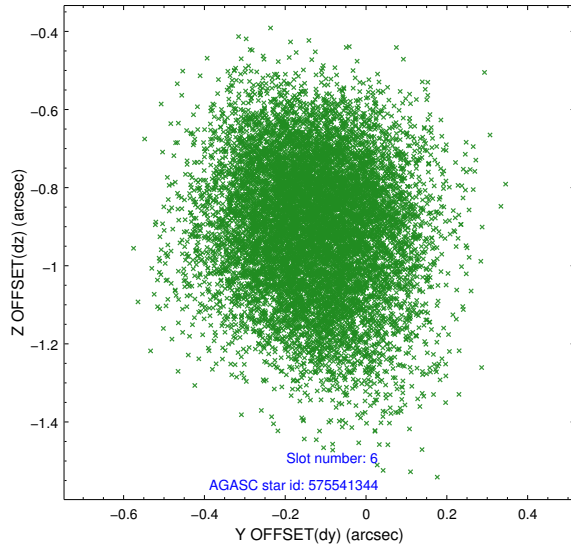
2.4.2 Slot 4



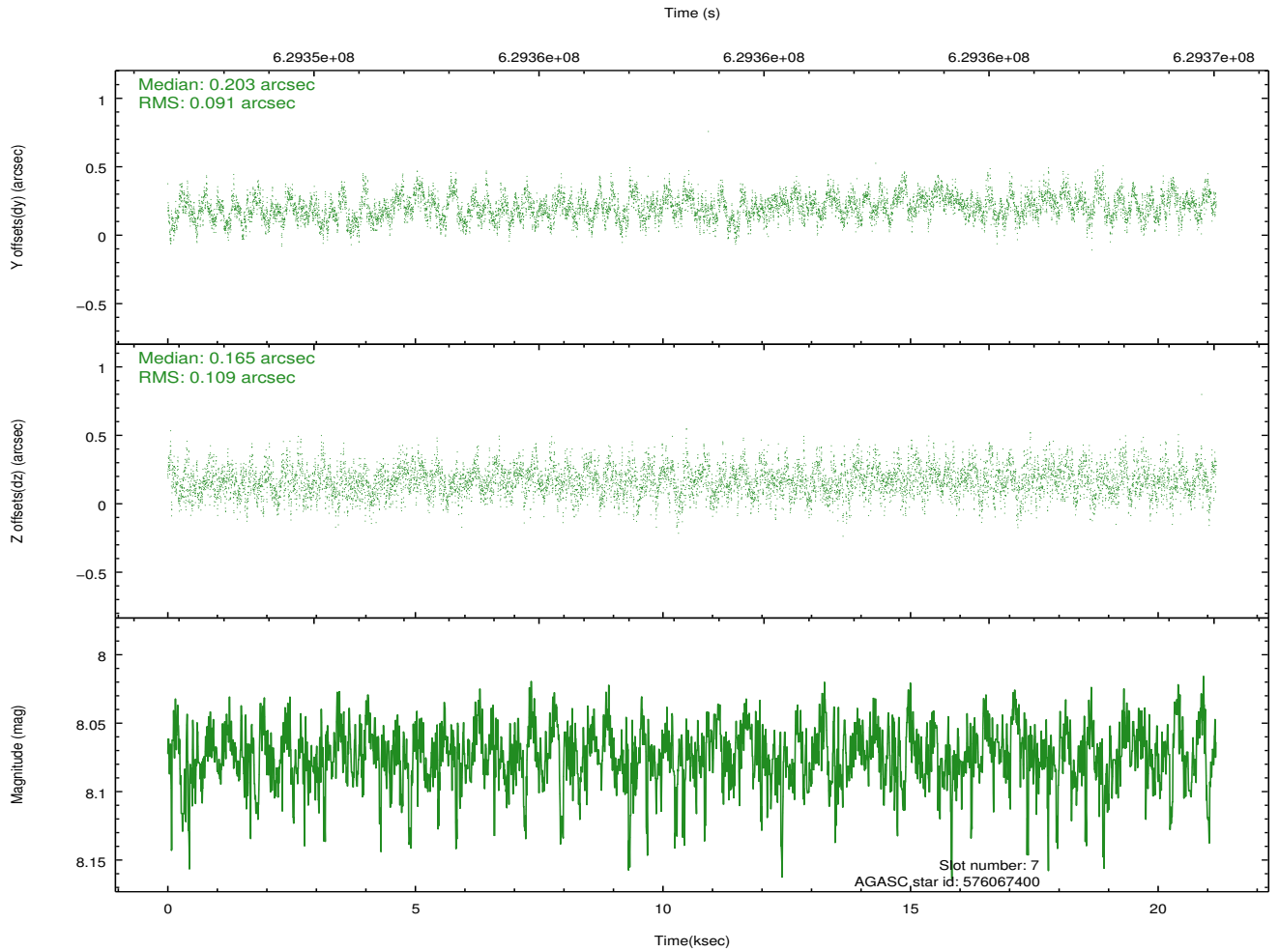
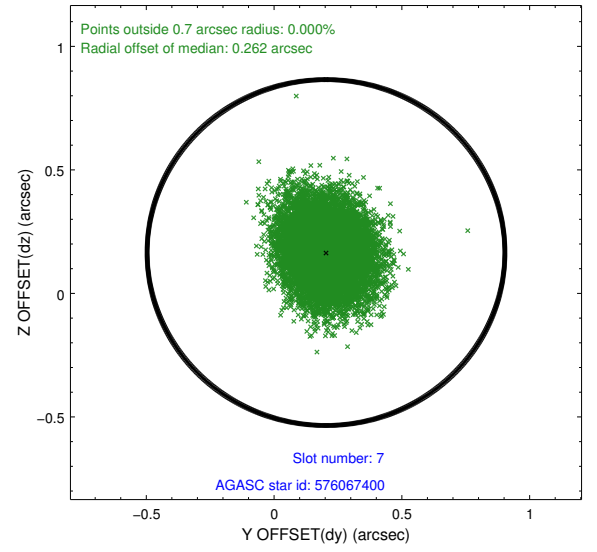
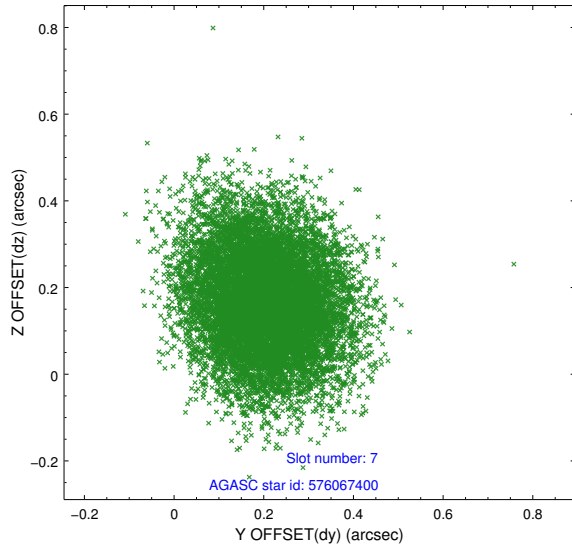
2.4.3 Slot 5



2.4.4 Slot 6

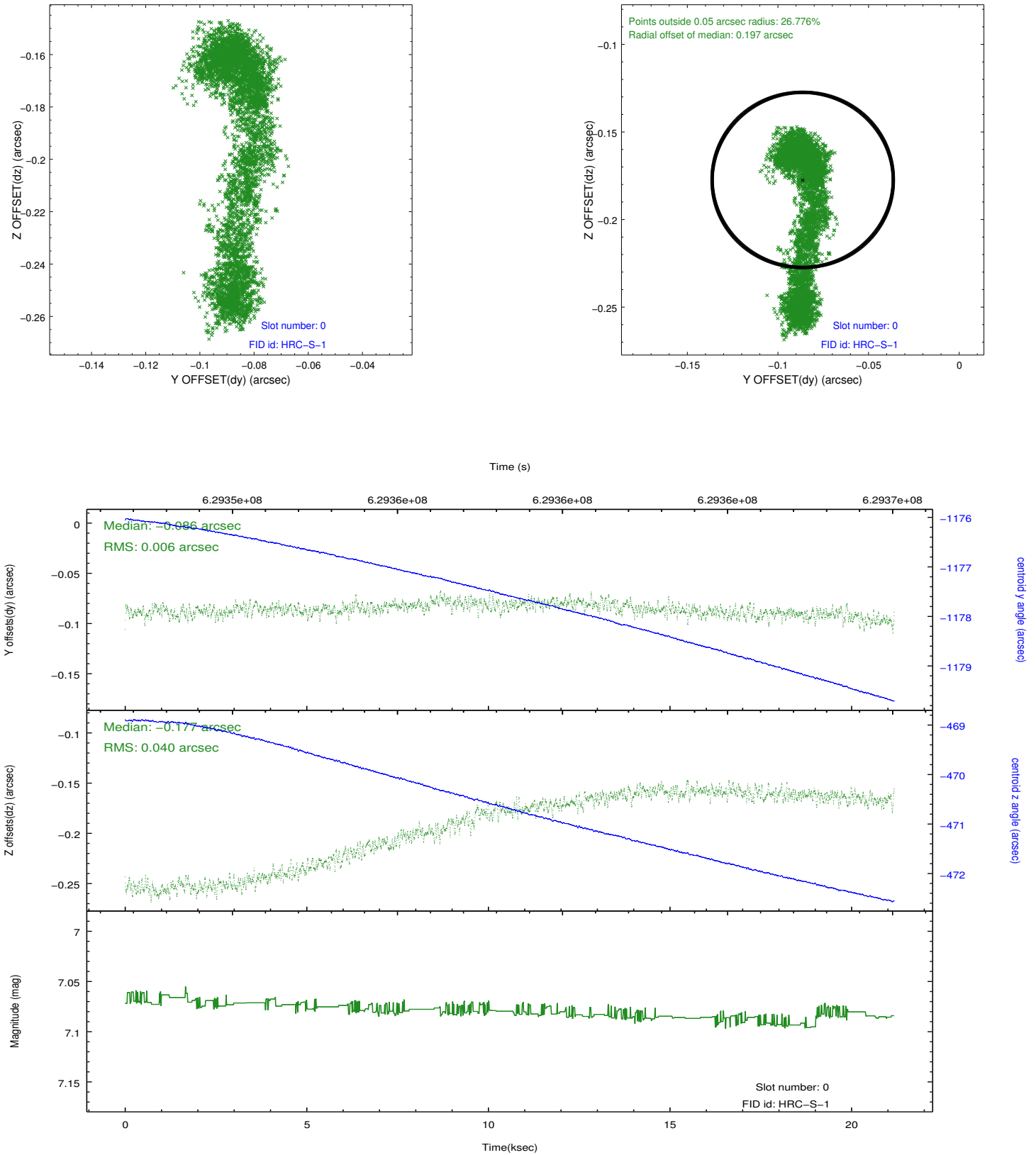


2.4.5 Slot 7

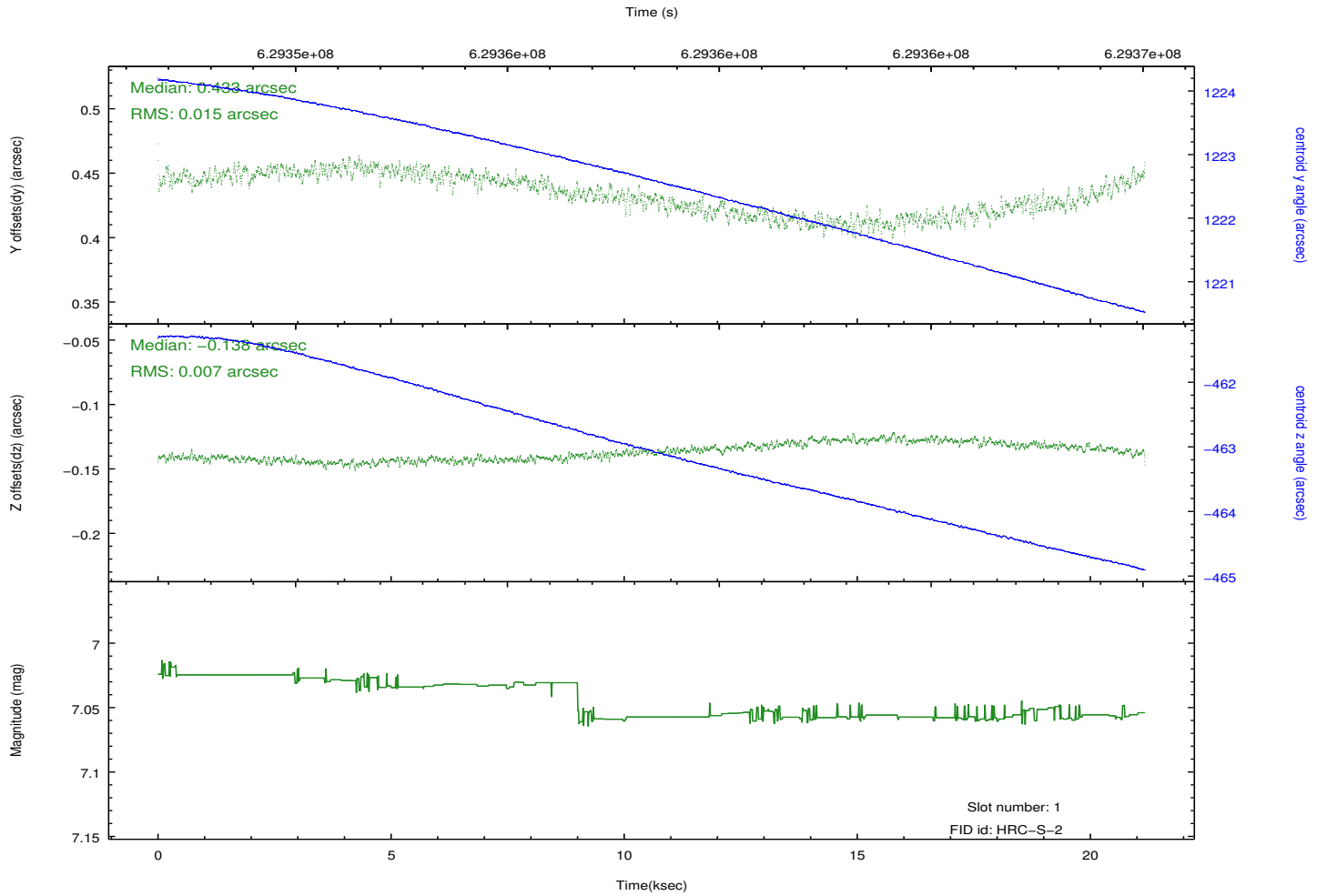
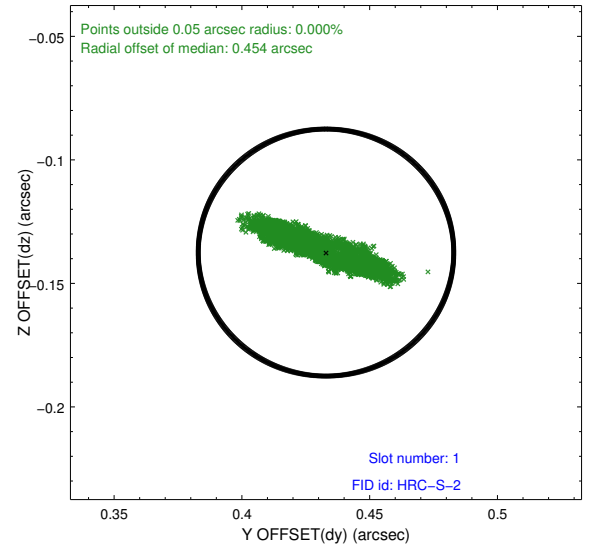
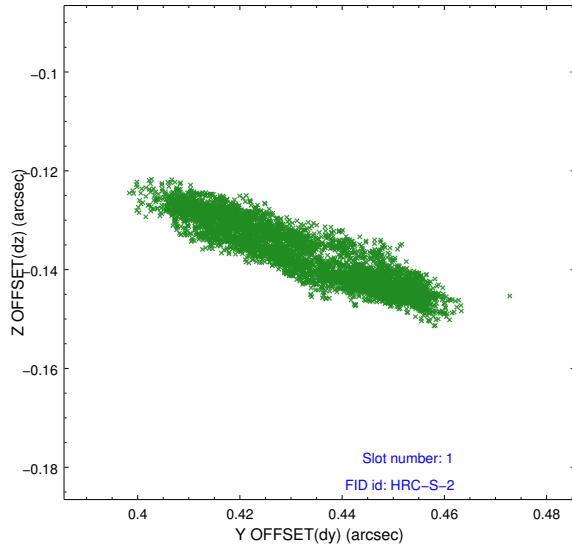


2.5 FID Slots

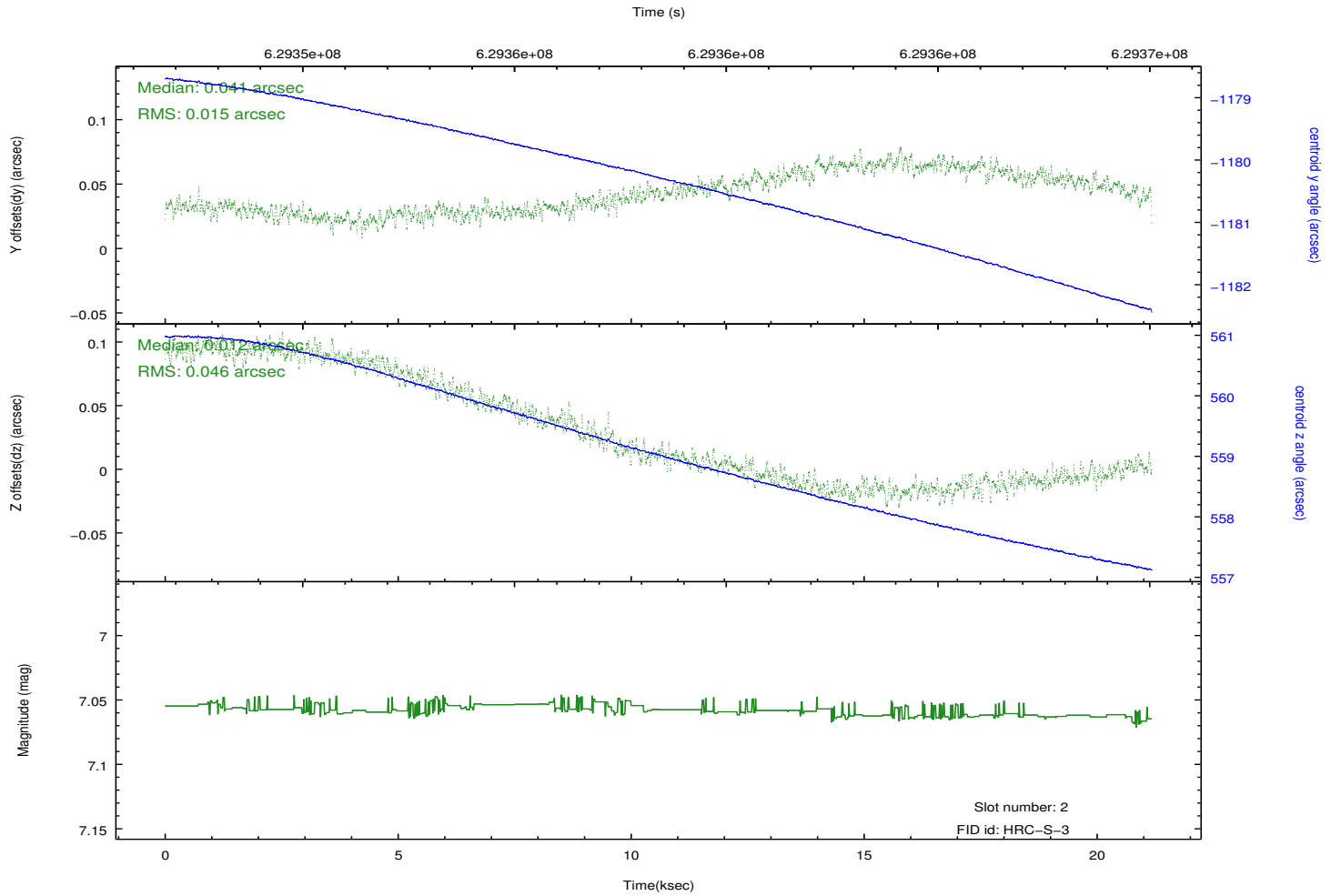
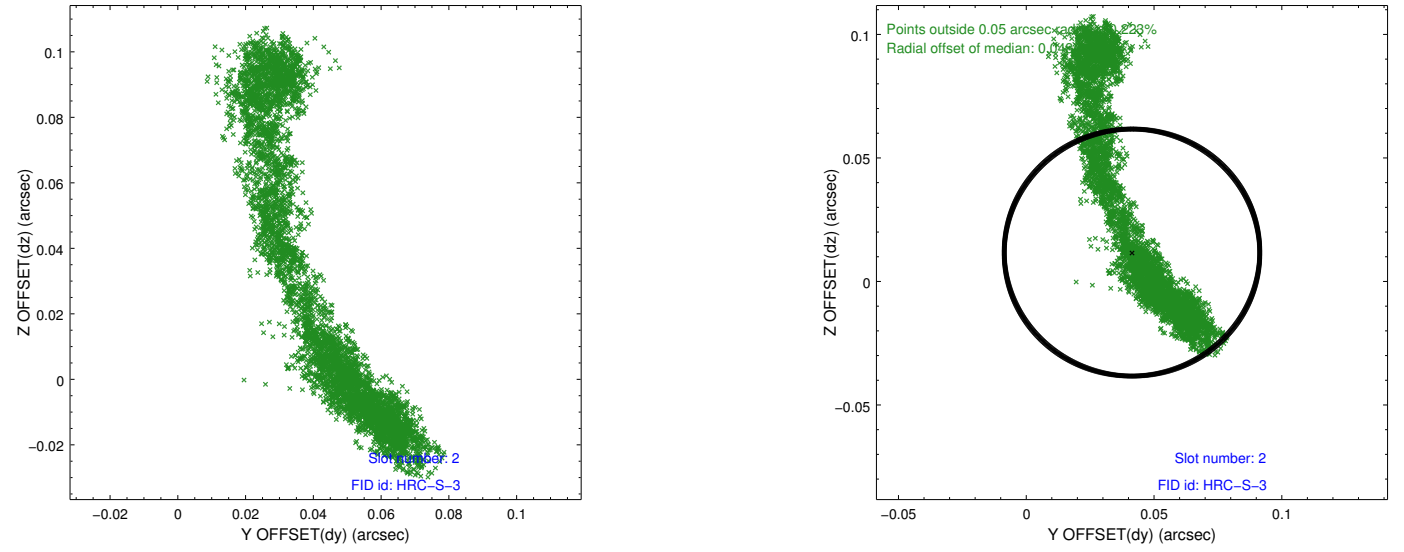
2.5.1 Slot 0



2.5.2 Slot 1

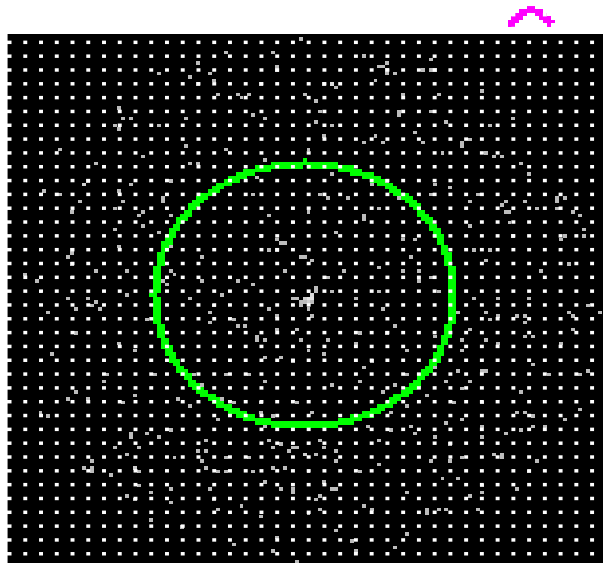


2.5.3 Slot 2

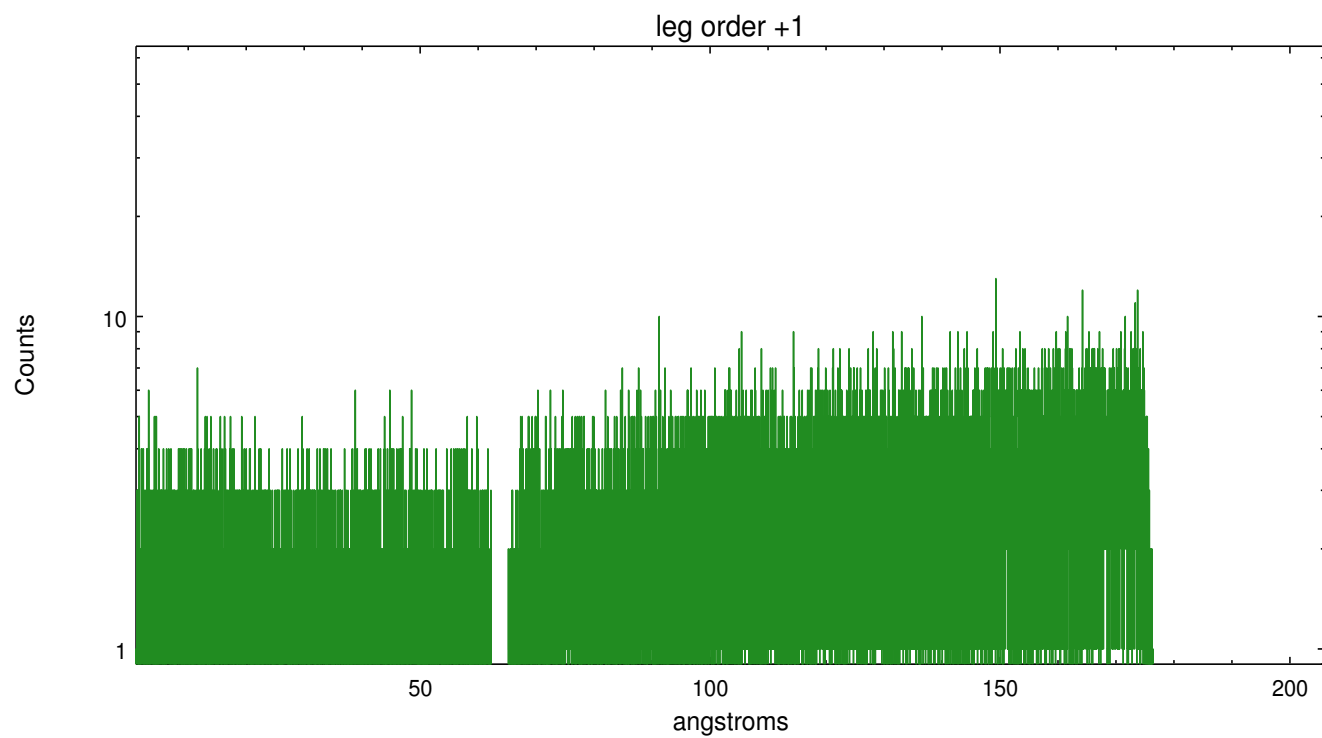
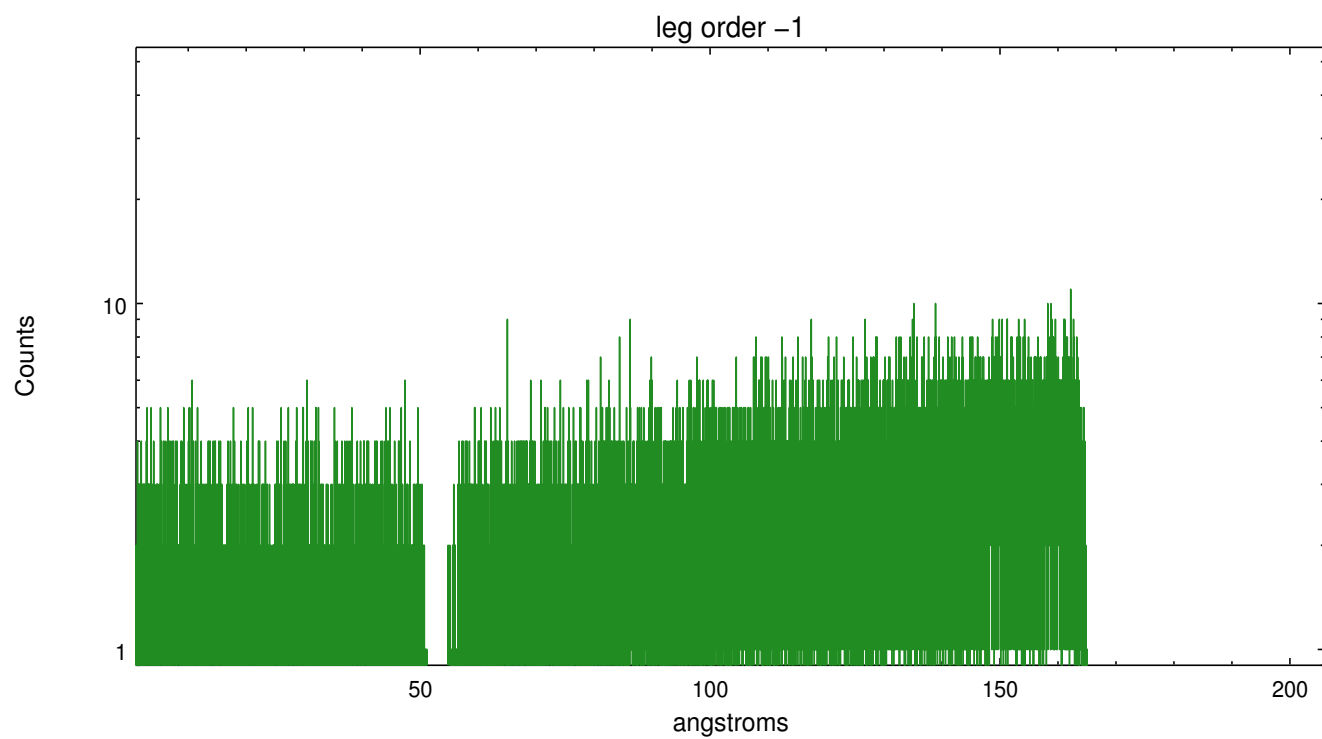


3 Gratings

3.1 LETG Arm



LETG Zero Order



A Summary

A.1 Status

V&V Scientist	David Huenemoerder
V&V Date (YYYY-MM-DD)	2017.12.11
V&V Edition	1
V&V Disposition and Status	OK
V&V Charge Time	21.173426243901

A.2 Comments