

V&V Reference Report

L2 ASCDS Version : 10.6

Observation 20115 - L2 Version 1
Chandra X-Ray Center

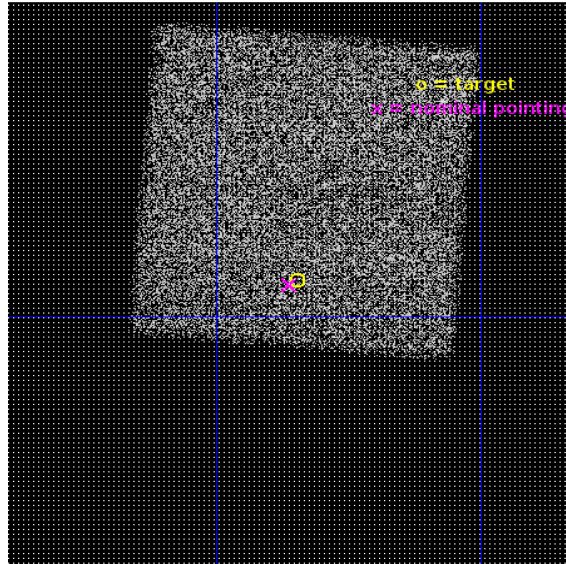
L2 Processing Date : Aug 27 2017

Contents

1	Front	2
2	OBI	3
2.1	OBI	3
2.1.1	Images	3
2.1.2	Bias	3
2.1.3	Parameters	4
2.1.4	Events	4
2.2	Compared Parameters	5
2.3	Aspect	6
2.4	Star Slots	9
2.4.1	Slot 3	9
2.4.2	Slot 4	10
2.4.3	Slot 5	11
2.4.4	Slot 6	12
2.4.5	Slot 7	13
2.5	FID Slots	14
2.5.1	Slot 0	14
2.5.2	Slot 1	15
2.5.3	Slot 2	16
A	Summary	17
A.1	Status	17
A.2	Comments	17

1 Front

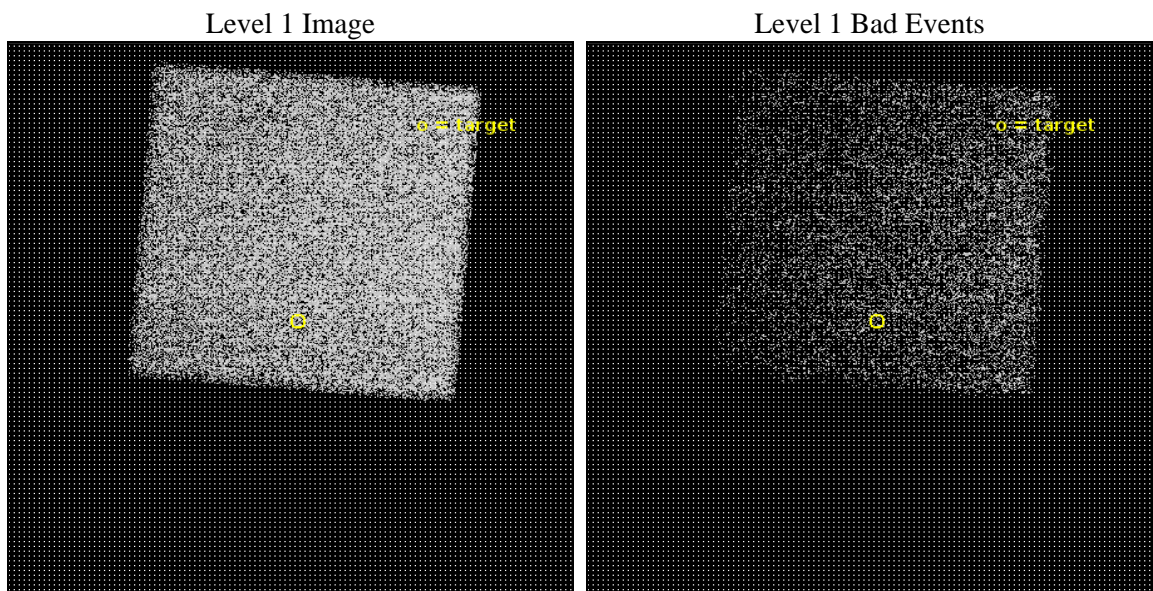
seq_num	703469	Sequence number
obs_id	20115	Observation id
title	X-ray confirmation of two intermediate mass black hole candidates	
observer	Igor Chilingarian	Principal investigator
object	SDSSJ135750.71+223100.8	Source name
dtcycle	0	
cycle	P	events from which exps? Prim/Second/Both
ra_targ	209.46125	Observer's specified target RA [deg]
dec_targ	22.516889	Observer's specified target Dec [deg]
ra_nom	209.46540740732	Nominal RA [deg]
dec_nom	22.514669831834	Nominal Dec [deg]
roll_nom	274.74310919047	Nominal Roll [deg]
revision	1	Processing version of data
ontime	10089.0	Sum of GTIs [s]
livetime	9952.845079315	Livetime [s]
ontime7	10089.0	Sum of GTIs [s]
l2events	37081	Number of level 2 events



2 OBI

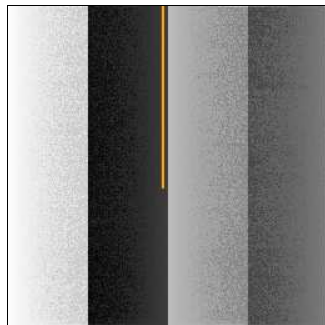
2.1 OBI

2.1.1 Images



2.1.2 Bias

Chip 7



2.1.3 Parameters

obi_num	1	Obi number	sched_exp_time	10000.000000	[s] Scheduled observation exposure time
ascdsver	10.6	Processing system revision	ontime	10089.0	Sum of GTIs [s]
caldsver	4.7.6	 	ontime7	10089.0	Sum of GTIs [s]
date	2017-08-27T23:05:27	Date and time of file creation	l1events	86669	Number of level 1 events
revision	1	Processing version of data			

2.1.4 Events

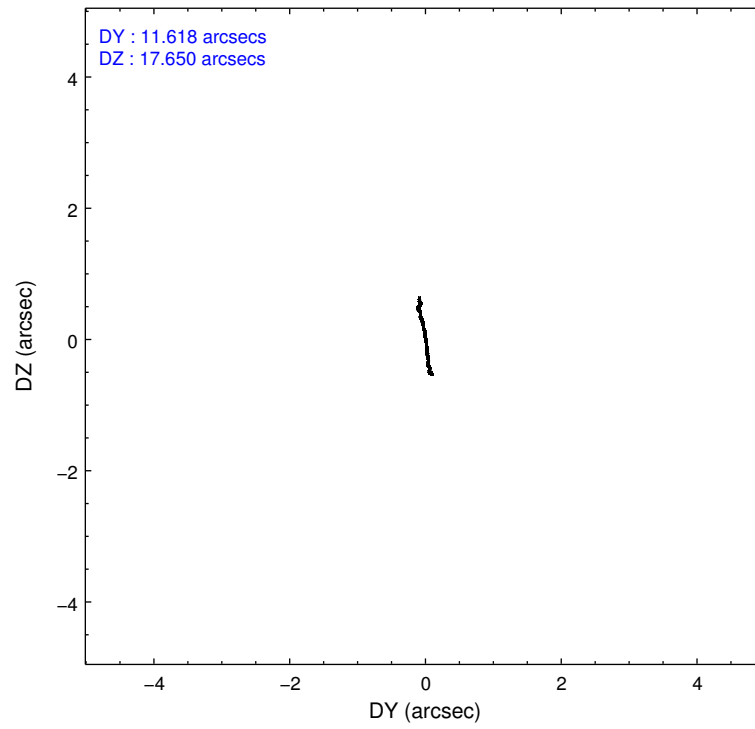
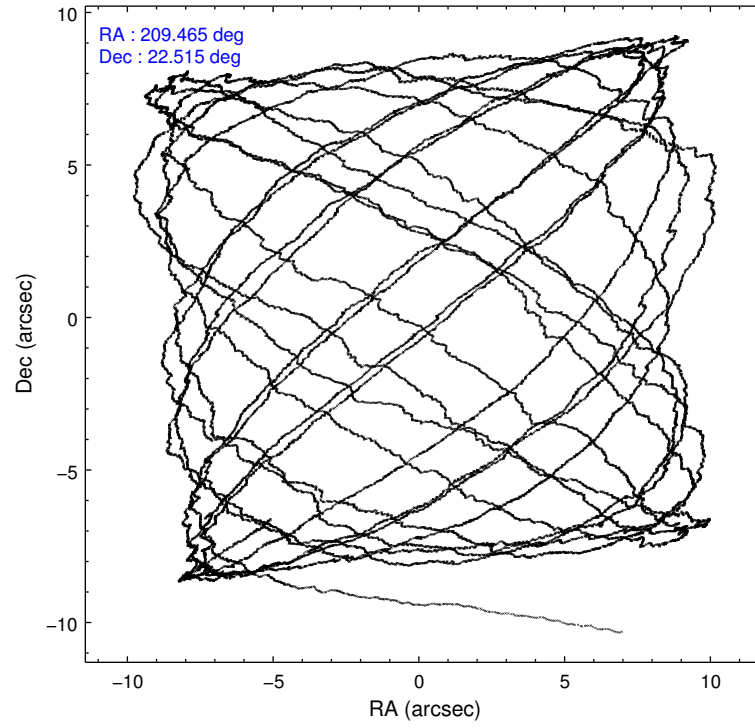
	ccd 7
level 1 events	86669
rejected events	48606
rejected %	56%

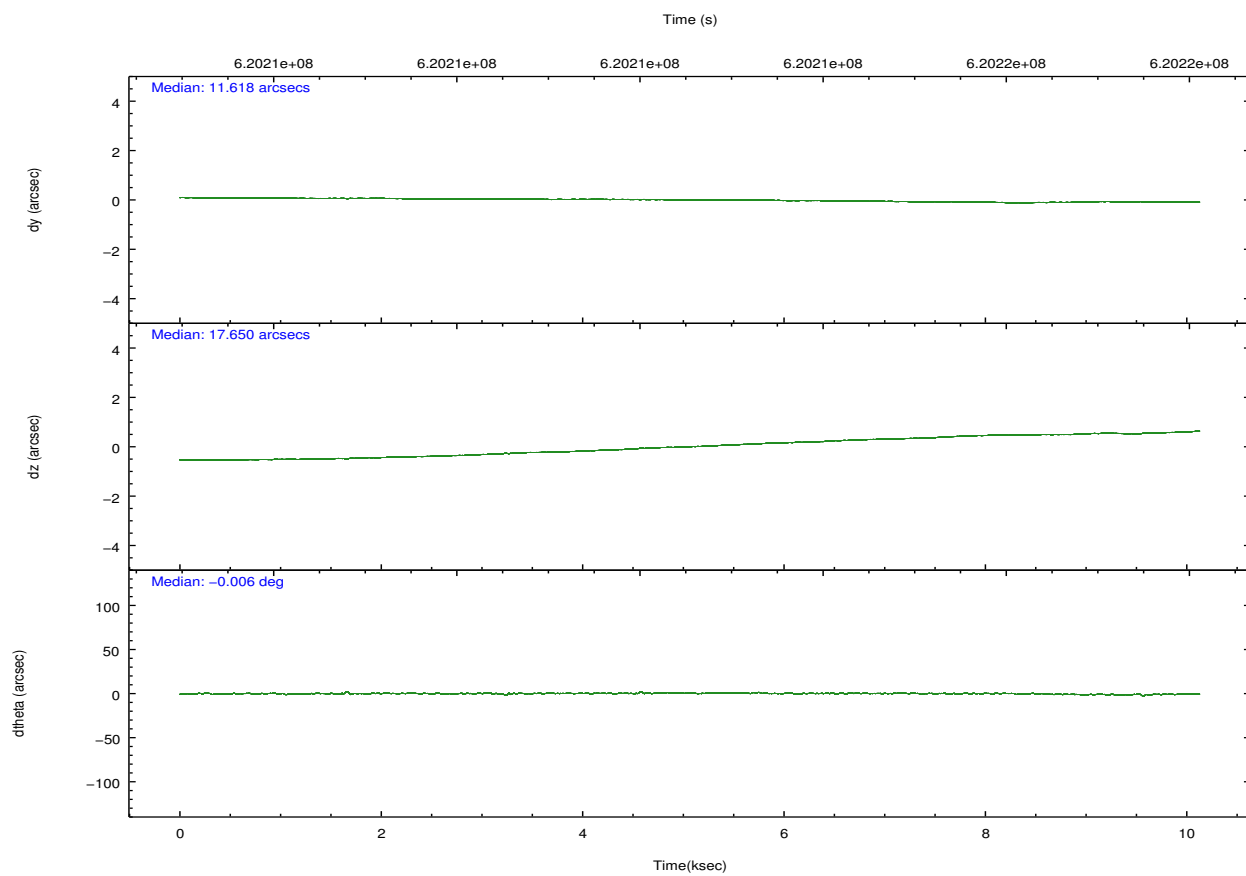
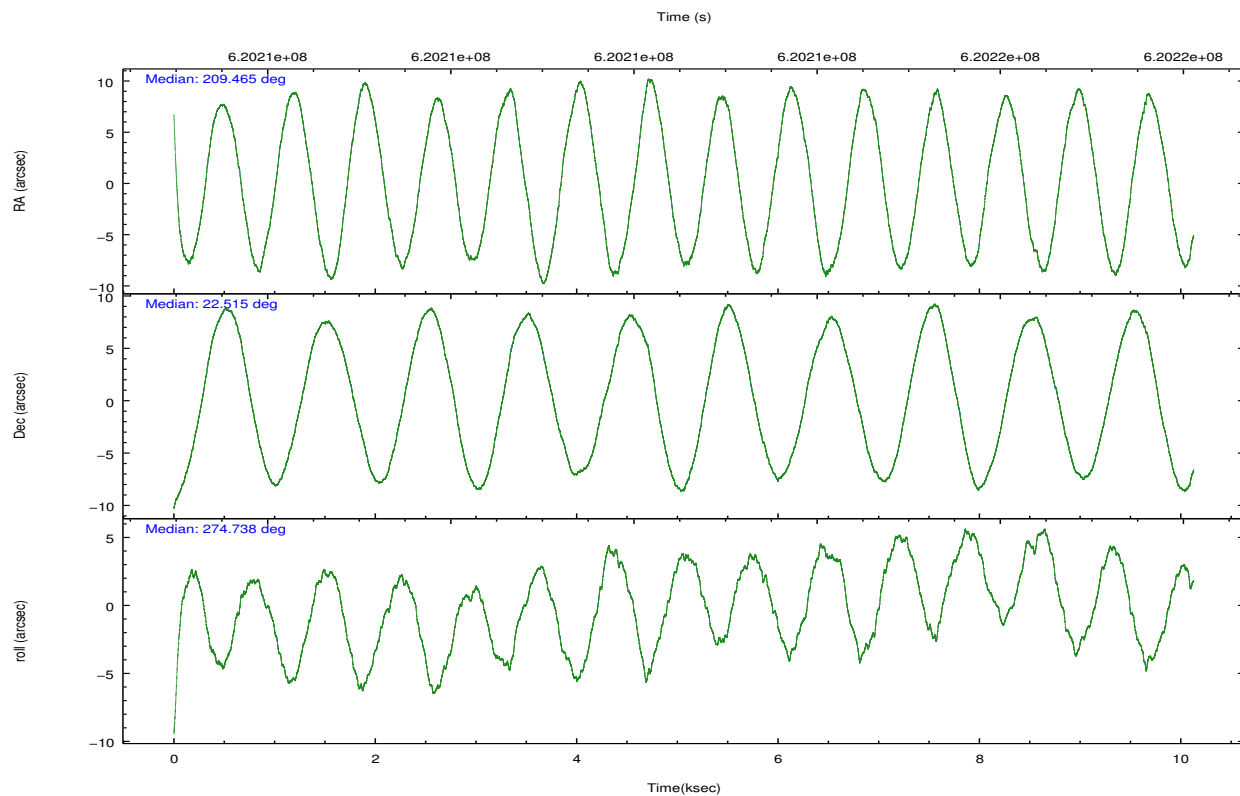
	ccd 7
grade 0 events	3273
	3%
grade 1 events	131
	0%
grade 2 events	7917
	9%
grade 3 events	3105
	3%
grade 4 events	3142
	3%
grade 5 events	8866
	10%
grade 6 events	20658
	23%
grade 7 events	39577
	45%

2.2 Compared Parameters

Parameter	Planned	Actual	Parameter	Planned	Actual
Instrument	ACIS	ACIS	Obspar format version number	7	7
Detector	ACIS-7	ACIS-7	Obspar file type	PREDICTED	ACTUAL
Grating	NONE	NONE	Obspar update status	NONE	UPDATED
Data mode	FAINT	FAINT	Number of optional ACIS chips dropped	0	0
Observation mode	POINTING	POINTING	On-chip summing requested	N	N
[deg] Pointing RA	209.448186	209.4654074073155	Subarray requested	NONE	NONE
[deg] Pointing Dec	22.537041	22.51466983183401	Alternating exposures requested	N	N
[deg] Pointing Roll	274.593086	274.7431091904716	[s] Primary exposure time	0.000000	3
[mm] SIM focus pos	-0.684267	-0.6828225247311905			
[mm] SIM defocus	0	0.001444936568705701			
[mm] SIM translation stage pos	-190.132523	-190.1400660498719			
[mm] SIM translation stage offset	0	0.00754346686406393			
[s] Observation start time (MET)	620207583.184000	620206244.56032			
Observation start date	2017-08-27T07:51:54	2017-08-27T07:30:44			
[s] Observation end time (MET)	620217583.184000	620218593.24854			
Observation end date	2017-08-27T10:38:34	2017-08-27T10:56:33			
Read mode	TIMED	TIMED			

2.3 Aspect



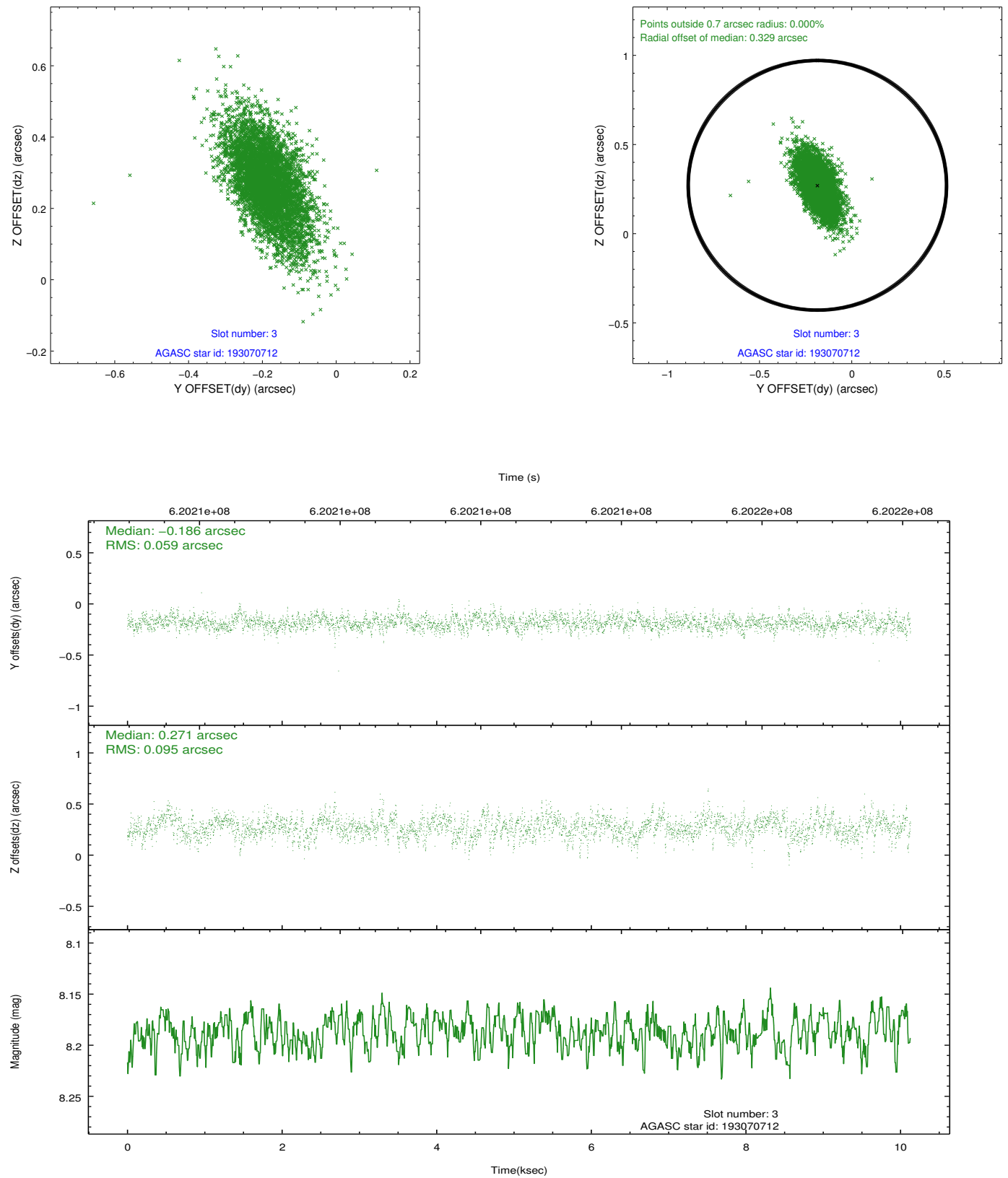


Slot Statistics

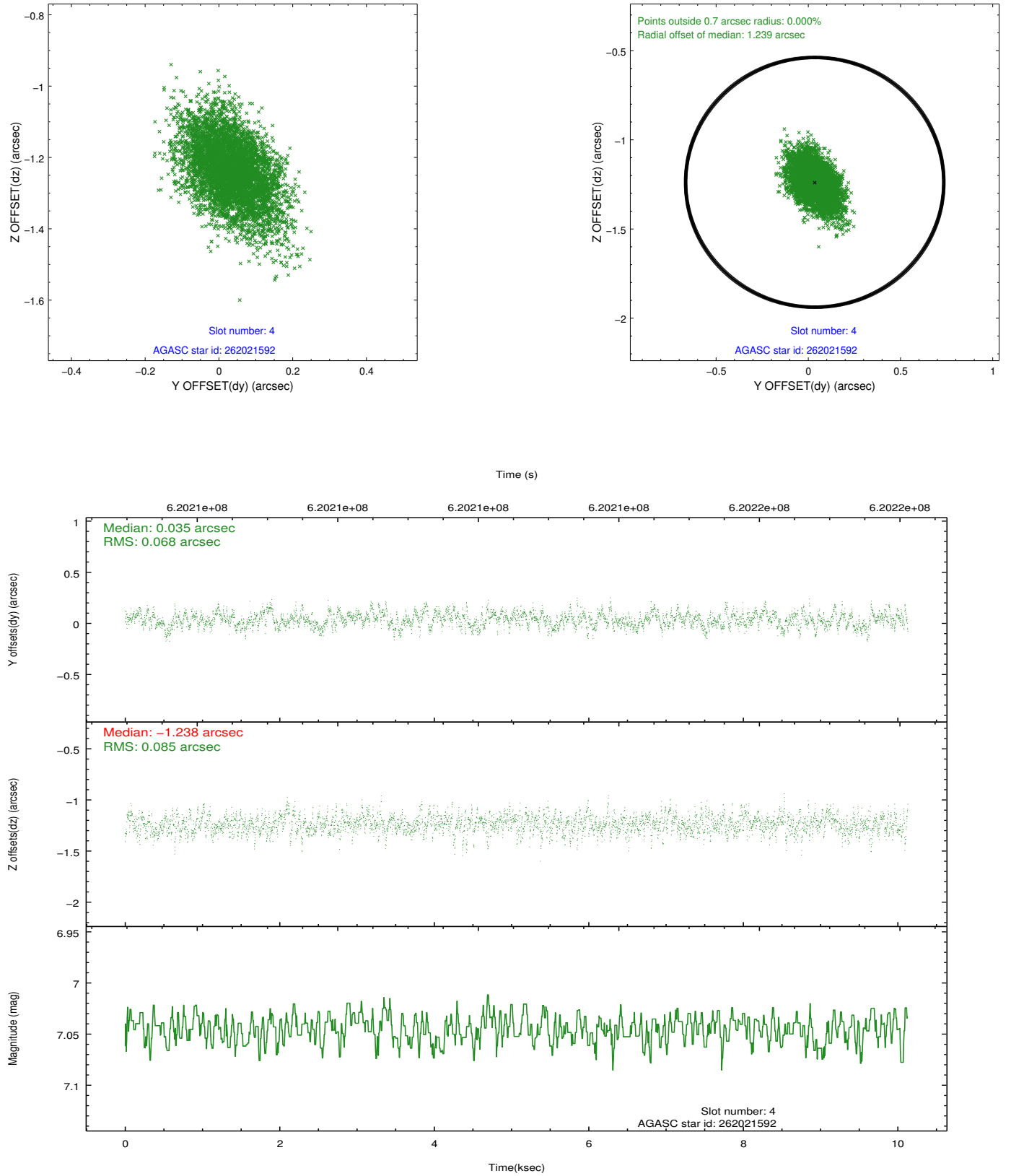
slot	status	used	id	mag	n_pts	med_dy	med_dz	dr1	dr2	ra	dec	mean_y	mean_z
0	FID		ACIS-S-1	7.12	2469	0.044	-0.031	0.021	0.029	0.000000	0.000000	931.60	-1734.77
1	FID		ACIS-S-4	7.14	2470	0.301	0.004	0.013	0.019	0.000000	0.000000	2149.53	168.90
2	FID		ACIS-S-5	7.14	2471	-0.371	0.040	0.010	0.016	0.000000	0.000000	-1817.04	163.08
3	GUIDE	used	193070712	8.19	4941	-0.186	0.271	0.112	0.206	209.790979	22.471643	325.00	1118.54
4	GUIDE	used	262021592	7.04	4938	0.035	-1.238	0.113	0.193	208.950789	22.680471	-649.44	-1606.25
5	GUIDE	used	262933784	8.68	4938	0.063	0.391	0.118	0.205	209.830842	22.869751	-1094.50	1358.50
6	GUIDE	used	262936512	8.74	4941	-0.024	0.292	0.110	0.202	209.920653	22.932141	-1295.09	1674.97
7	GUIDE	used	262939208	9.10	4938	0.108	0.276	0.148	0.260	209.789069	22.730464	-604.94	1184.78

2.4 Star Slots

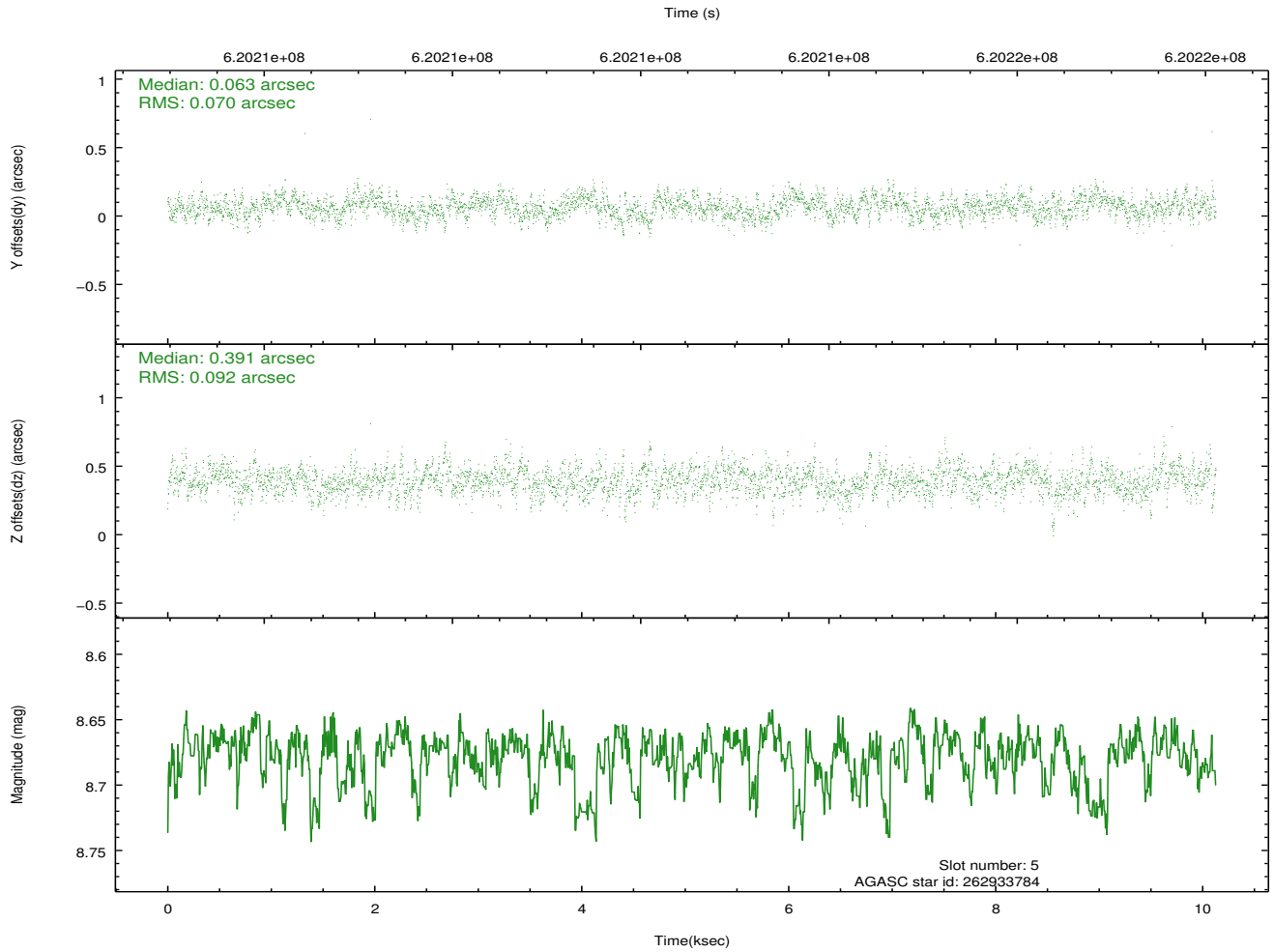
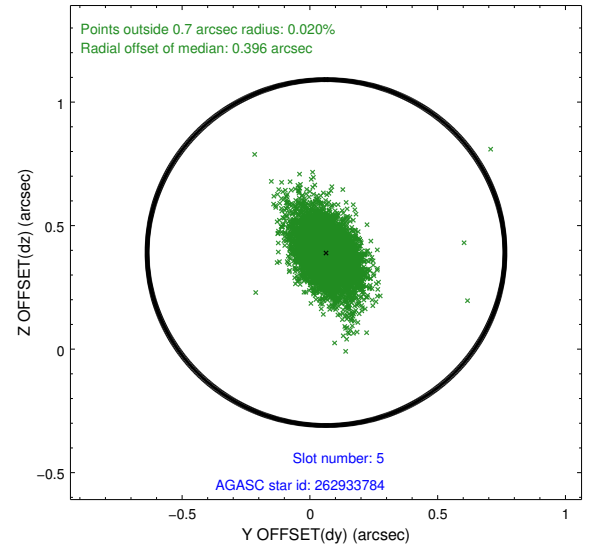
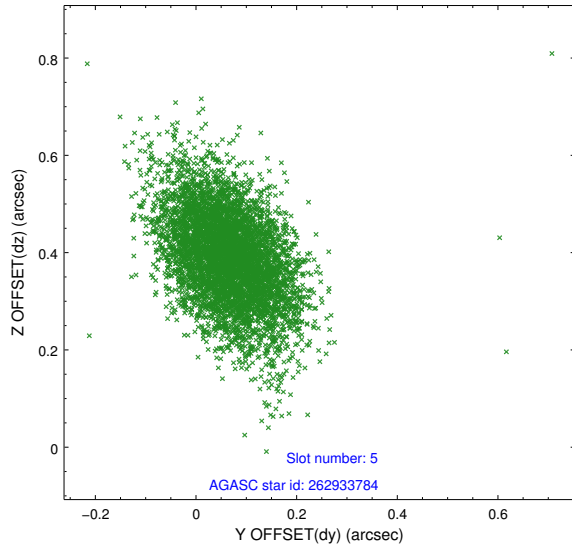
2.4.1 Slot 3



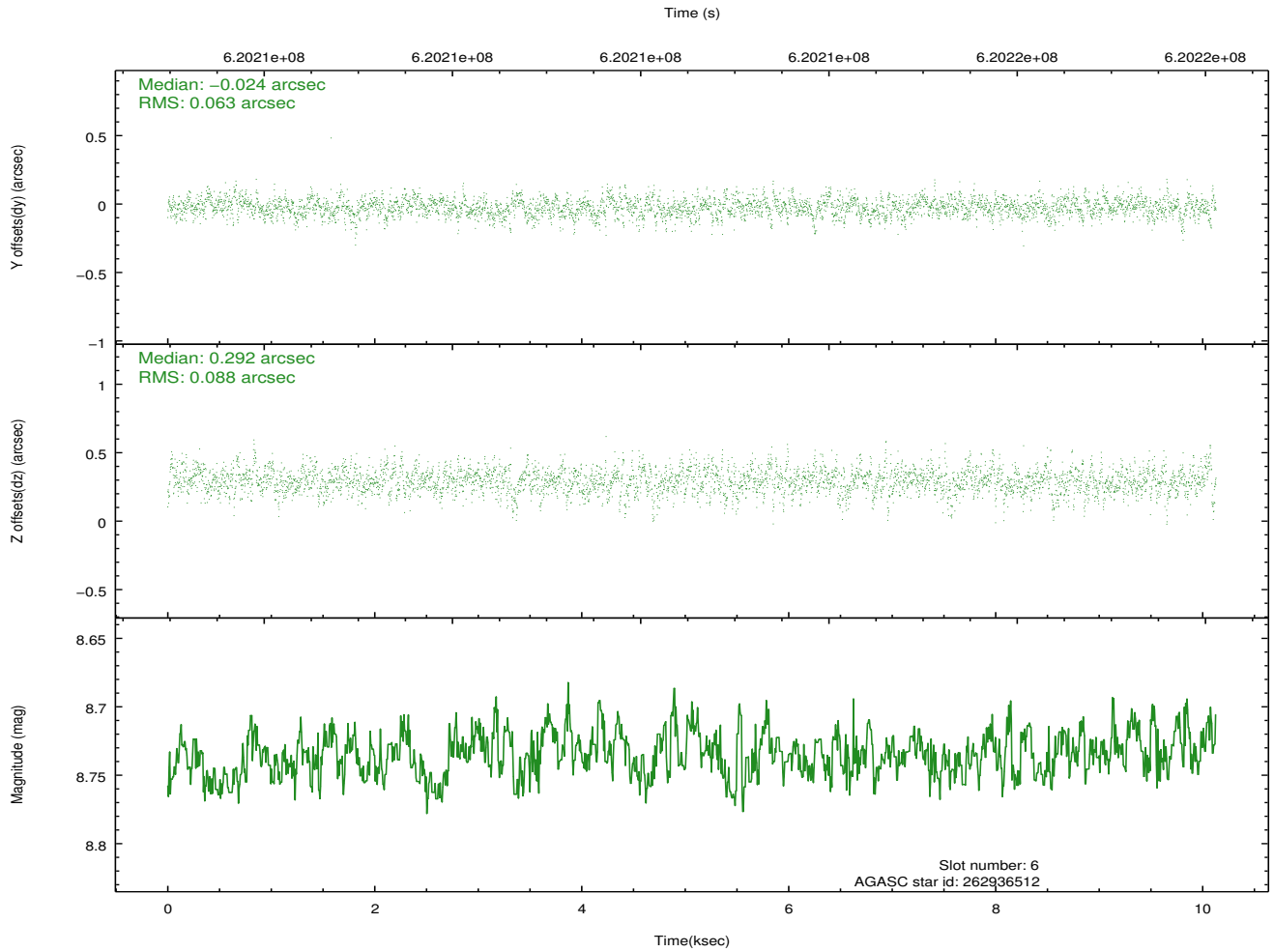
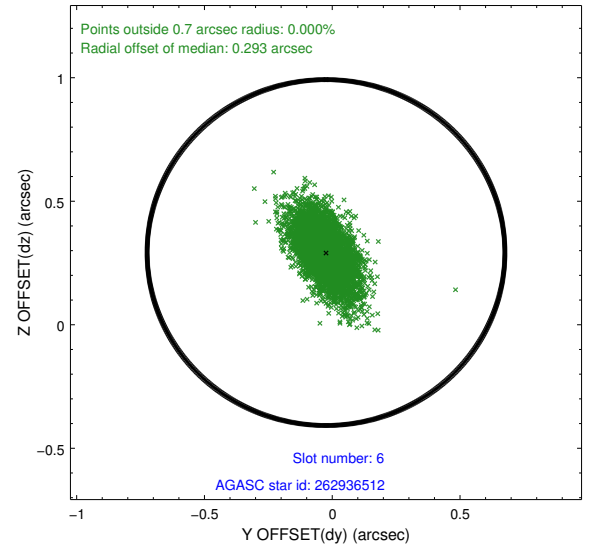
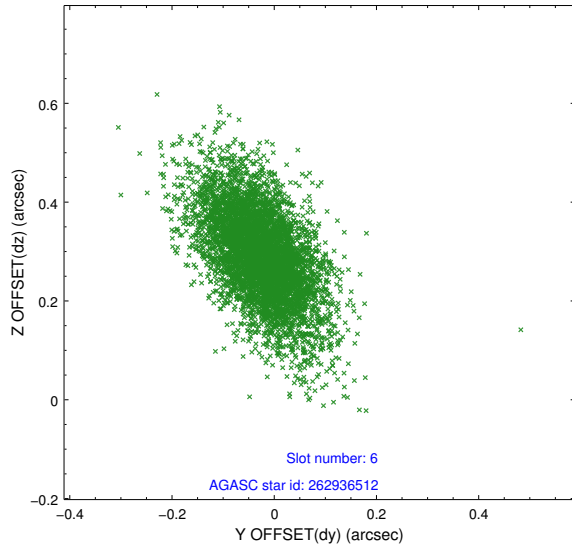
2.4.2 Slot 4



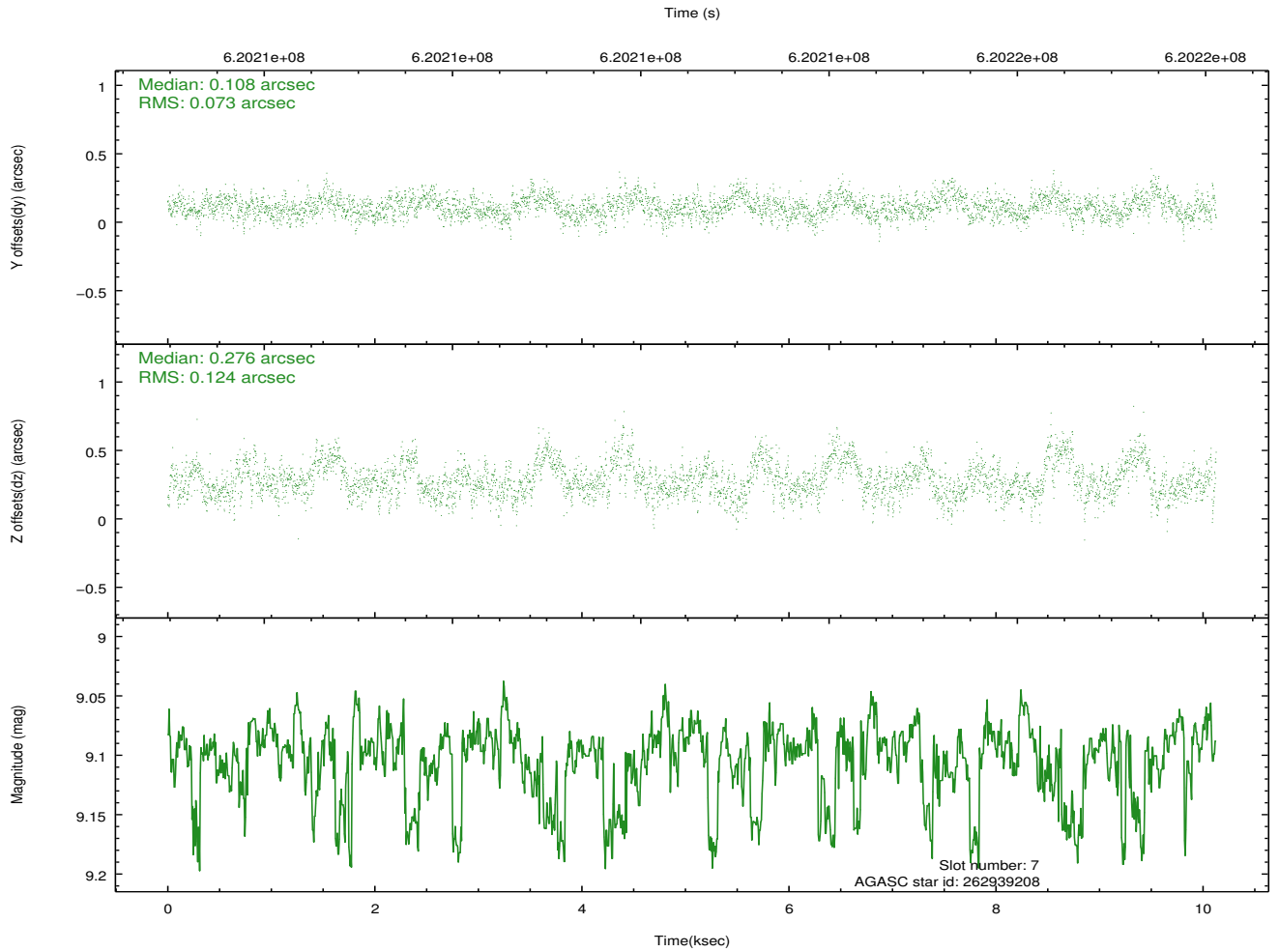
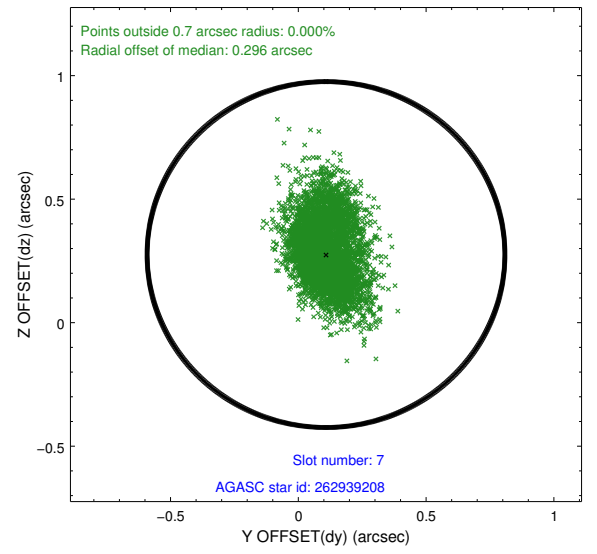
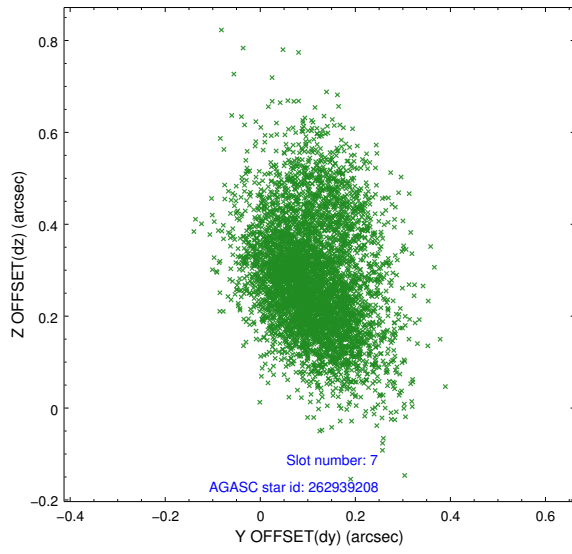
2.4.3 Slot 5



2.4.4 Slot 6

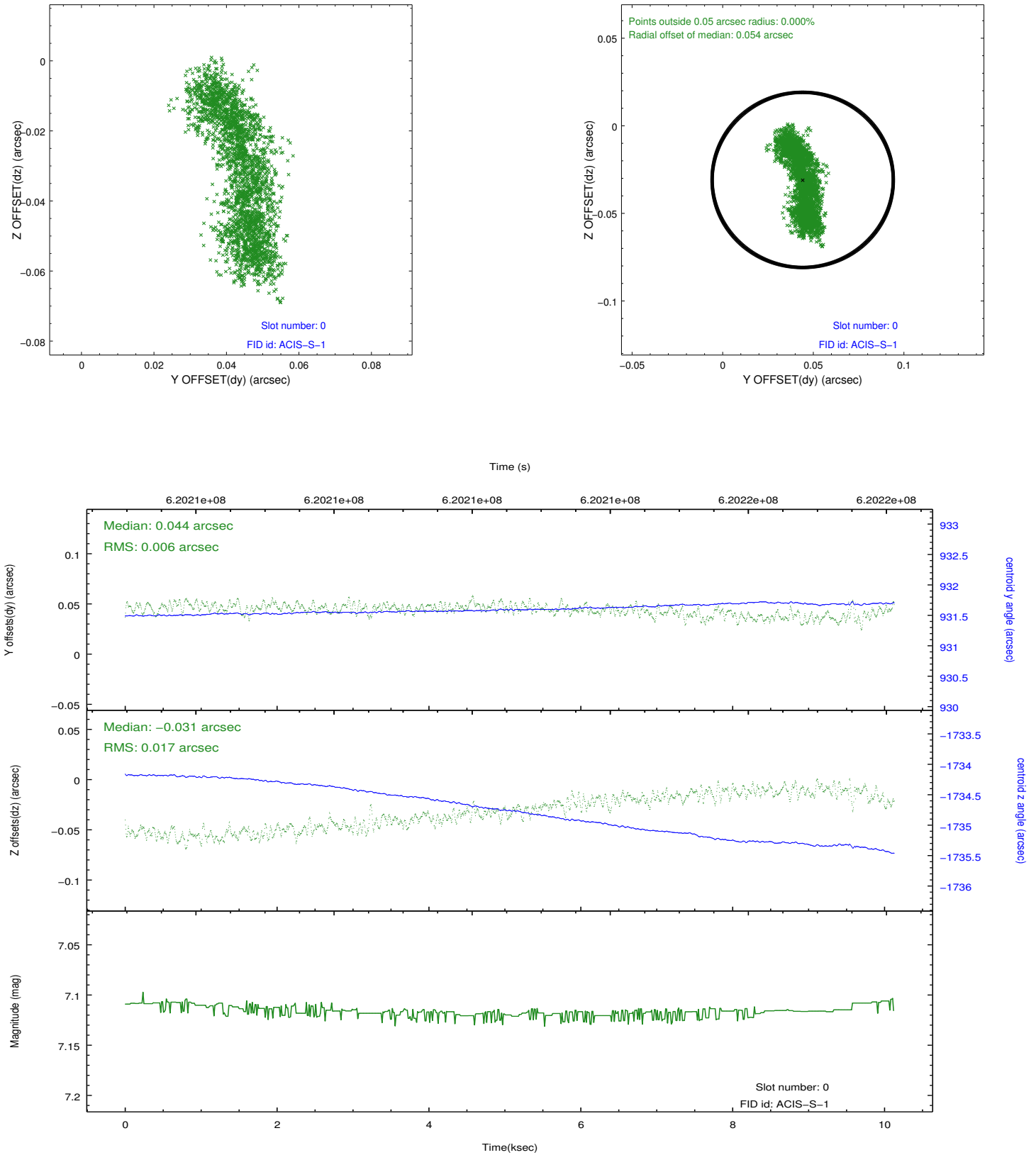


2.4.5 Slot 7

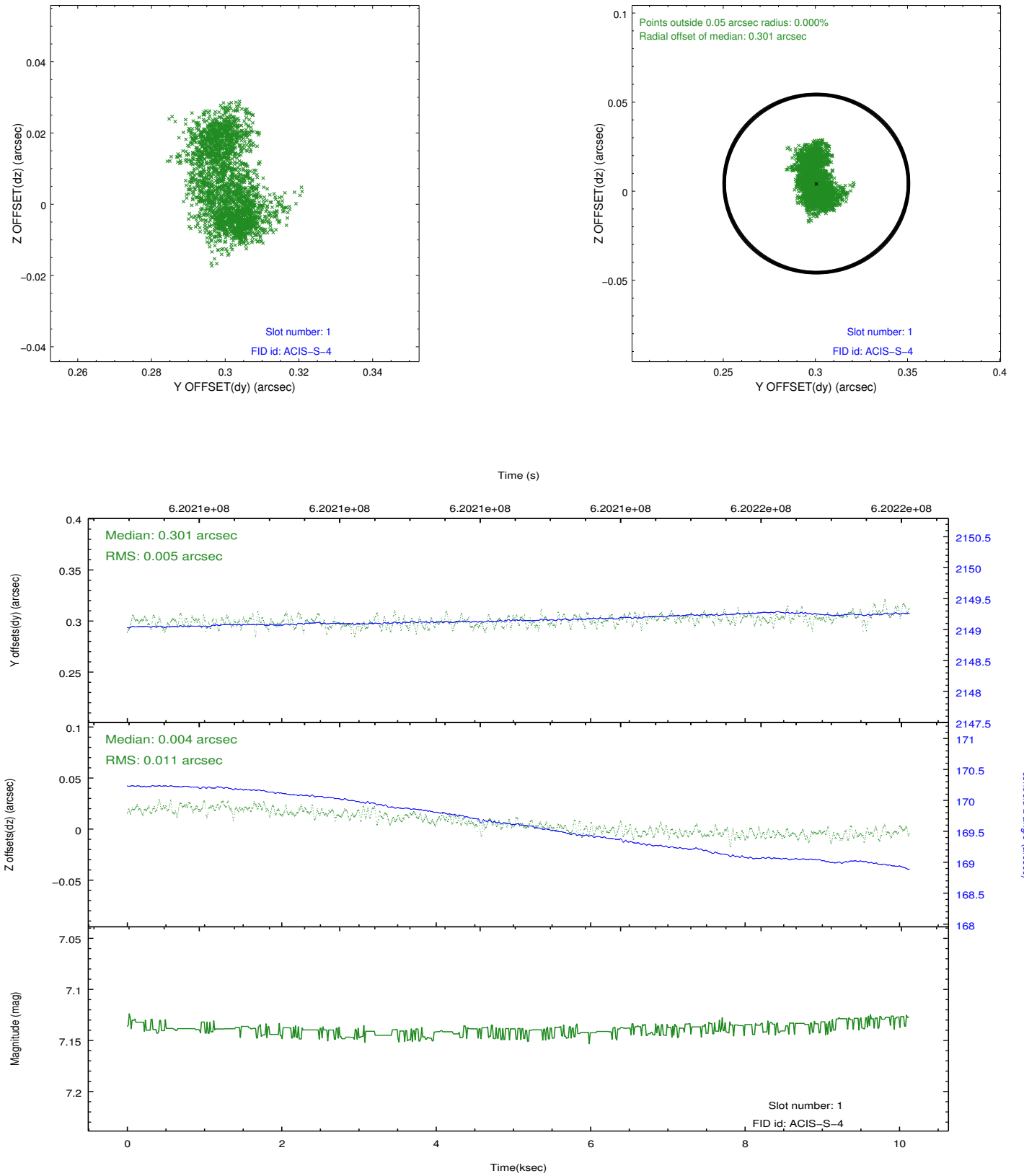


2.5 FID Slots

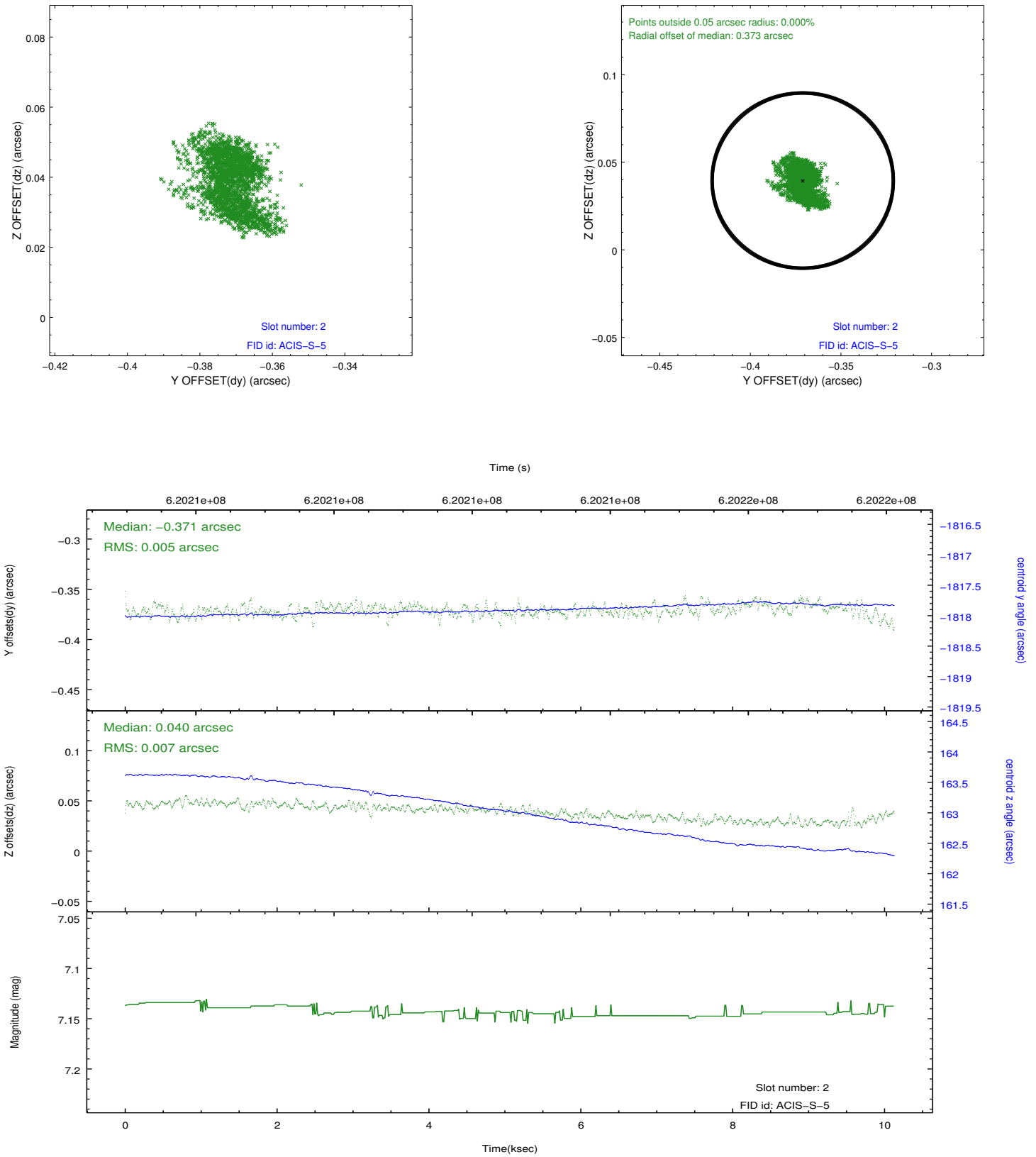
2.5.1 Slot 0



2.5.2 Slot 1



2.5.3 Slot 2



A Summary

A.1 Status

V&V Scientist	Beth Sundheim
V&V Date (YYYY-MM-DD)	2017.08.27
V&V Edition	1
V&V Disposition and Status	OK
V&V Charge Time	10.089

A.2 Comments