

# V&V Reference Report

## L2 ASCDS Version : 10.5.2

Observation 19486 - L2 Version 1  
Chandra X-Ray Center

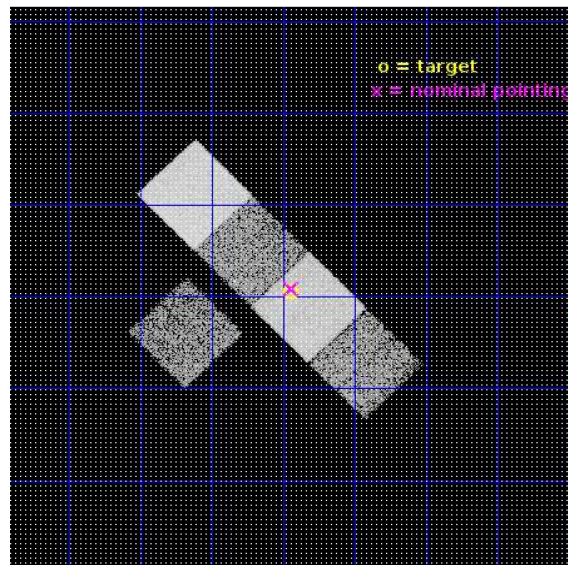
L2 Processing Date : Jan 11 2017

## Contents

<b>1</b>	<b>Front</b>	<b>2</b>
<b>2</b>	<b>OBI</b>	<b>3</b>
2.1	OBI . . . . .	3
2.1.1	Images . . . . .	3
2.1.2	Bias . . . . .	3
2.1.3	Parameters . . . . .	4
2.1.4	Events . . . . .	4
2.2	Compared Parameters . . . . .	5
2.3	Aspect . . . . .	6
2.4	Star Slots . . . . .	9
2.4.1	Slot 3 . . . . .	9
2.4.2	Slot 4 . . . . .	10
2.4.3	Slot 5 . . . . .	11
2.4.4	Slot 6 . . . . .	12
2.4.5	Slot 7 . . . . .	13
2.5	FID Slots . . . . .	14
2.5.1	Slot 0 . . . . .	14
2.5.2	Slot 1 . . . . .	15
2.5.3	Slot 2 . . . . .	16
<b>A</b>	<b>Summary</b>	<b>17</b>
A.1	Status . . . . .	17
A.2	Comments . . . . .	17

# 1 Front

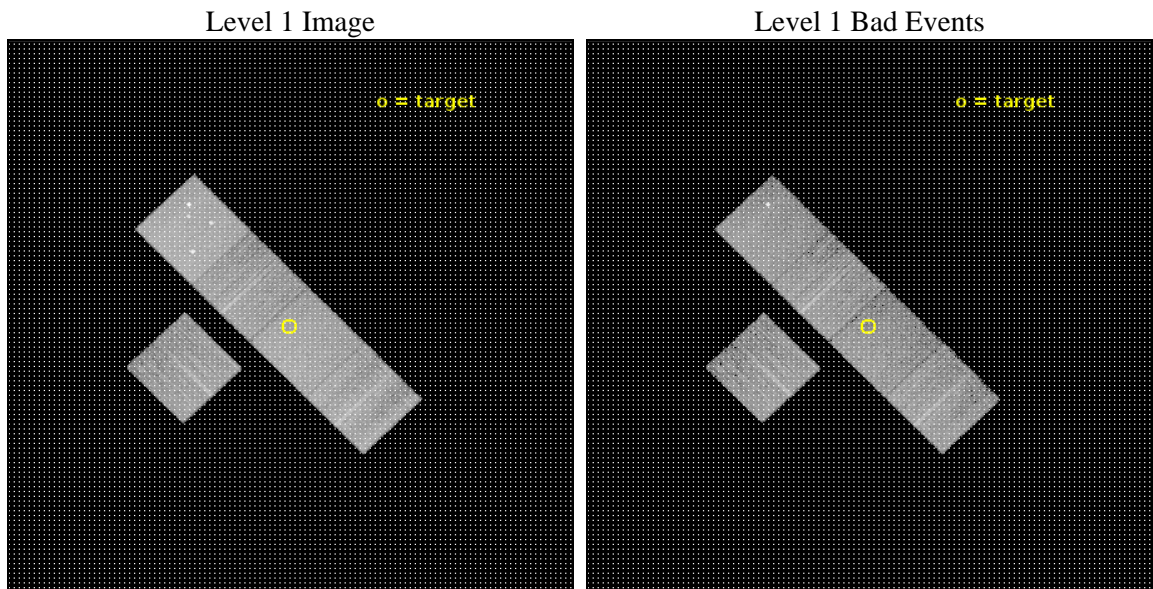
seq_num	703334	Sequence number
obs_id	19486	Observation id
title	UNDERSTANDING THE ROLE OF AGN IN TRANSITIONING GALAXI	Proposal tit
observer	Dr. Lauranne Lanz	Principal investigator
object	spog10	Source name
dtcycle	0	&#160
cycle	P	events from which exps? Prim/Second/Both
ra_targ	133.486667	Observer's specified target RA [deg]
dec_targ	3.176	Observer's specified target Dec [deg]
ra_nom	133.48615224813	Nominal RA [deg]
dec_nom	3.1813300043059	Nominal Dec [deg]
roll_nom	45.736447037283	Nominal Roll [deg]
revision	1	Processing version of data
ontime	10046.247611642	Sum of GTIs [s]
livetime	9914.9859906559	Livetime [s]
ontime2	10046.083451629	Sum of GTIs [s]
ontime5	10046.206571698	Sum of GTIs [s]
ontime6	10043.024451375	Sum of GTIs [s]
ontime7	10046.247611642	Sum of GTIs [s]
ontime8	10046.124491692	Sum of GTIs [s]
l2events	111466	Number of level 2 events



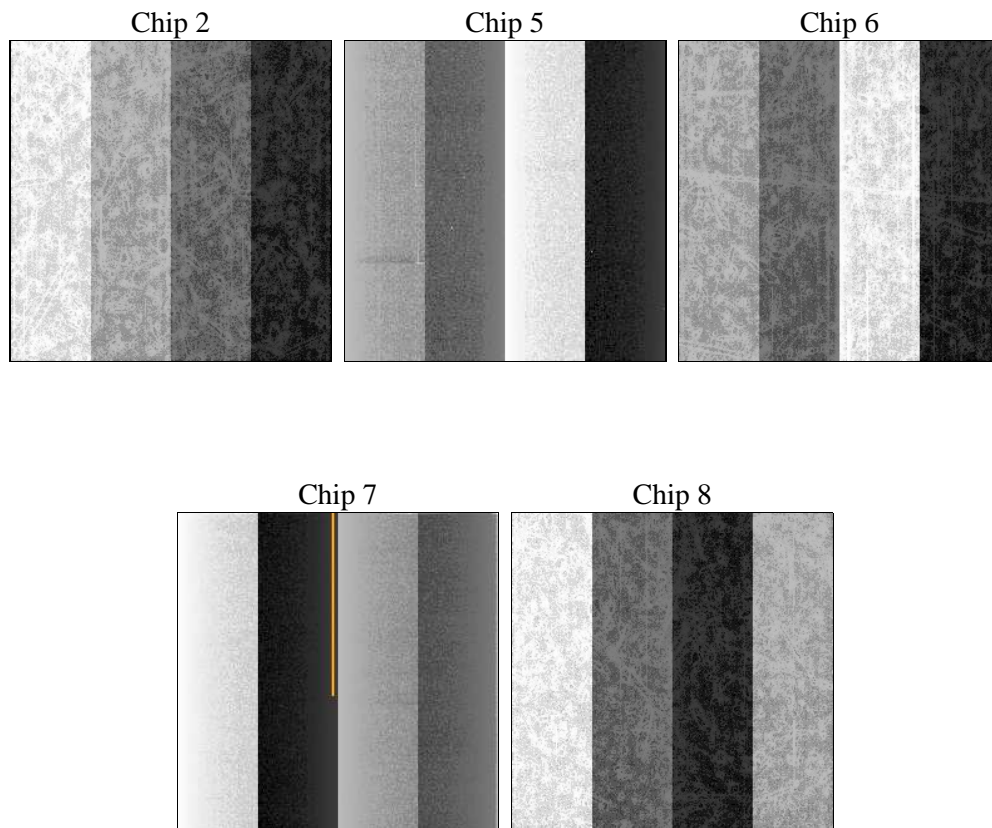
## 2 OBI

### 2.1 OBI

#### 2.1.1 Images



#### 2.1.2 Bias



### 2.1.3 Parameters

obi_num	0	Obi number	sched_exp_time	10000.000000	[s] Scheduled observation exposure time
ascdsver	10.5.2	Processing system revision	ontime	10046.247611642	Sum of GTIs [s]
caldbver	4.7.3	&#160	ontime2	10046.083451629	Sum of GTIs [s]
date	2017-01-11T19:41:16	Date and time of file creation	ontime5	10046.206571698	Sum of GTIs [s]
revision	1	Processing version of data	ontime6	10043.024451375	Sum of GTIs [s]
			ontime7	10046.247611642	Sum of GTIs [s]
			ontime8	10046.124491692	Sum of GTIs [s]
			l1events	451726	Number of level 1 events

### 2.1.4 Events

	ccd 2	ccd 5	ccd 6	ccd 7	ccd 8
level 1 events	71061	119146	74455	92277	94787
rejected events	63618	60429	66045	52239	69447
rejected %	89%	50%	88%	56%	73%

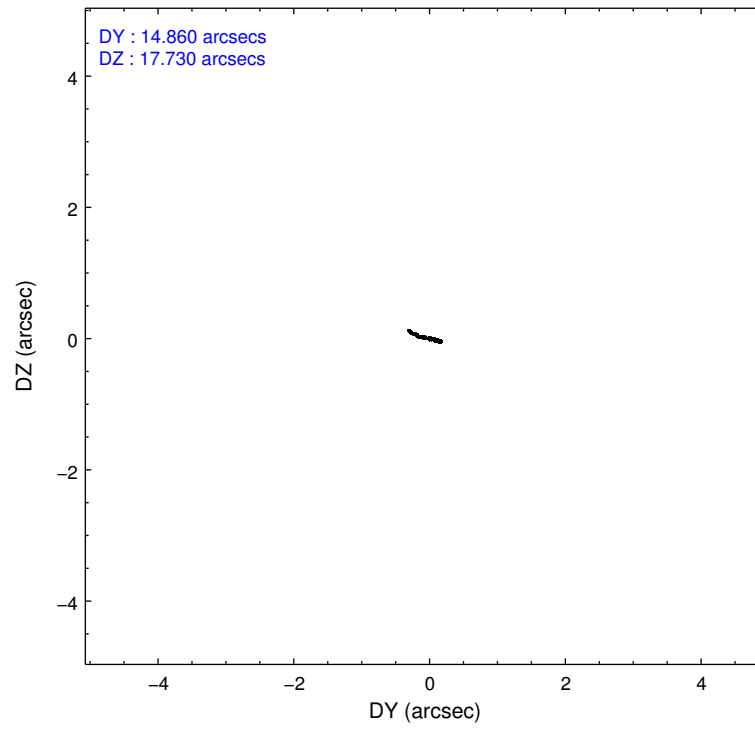
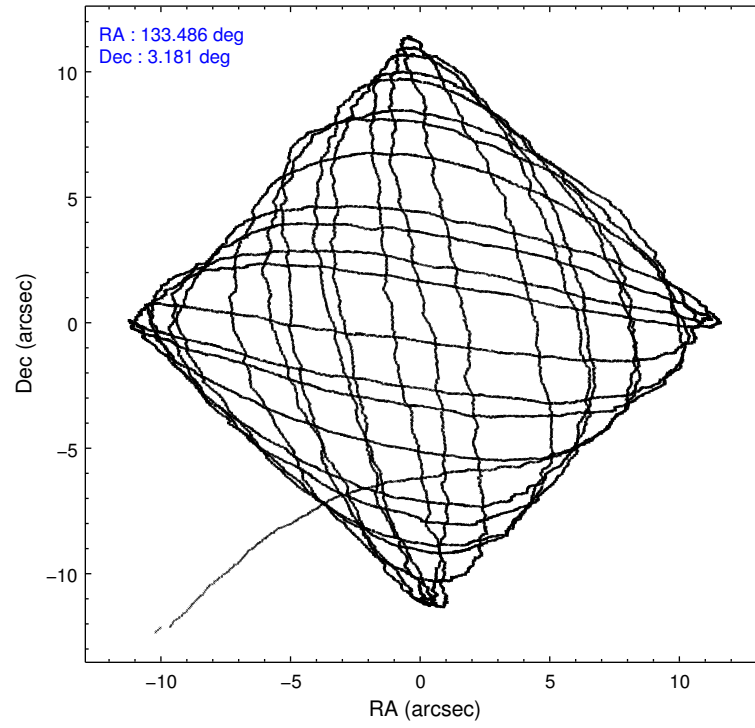
	ccd 2	ccd 5	ccd 6	ccd 7	ccd 8
grade 0 events	2606	7910	2873	3395	7338
	3%	6%	3%	3%	7%
grade 1 events	40	208	37	140	85
	0%	0%	0%	0%	0%
grade 2 events	1841	17526	1957	8522	6226
	2%	14%	2%	9%	6%
grade 3 events	779	1875	838	3325	2756
	1%	1%	1%	3%	2%
grade 4 events	765	1728	829	3170	2481
	1%	1%	1%	3%	2%
grade 5 events	2825	8296	3454	9188	5187
	3%	6%	4%	9%	5%
grade 6 events	1457	29750	1925	21661	6614
	2%	24%	2%	23%	6%
grade 7 events	60748	51853	62542	42876	64100
	85%	43%	83%	46%	67%

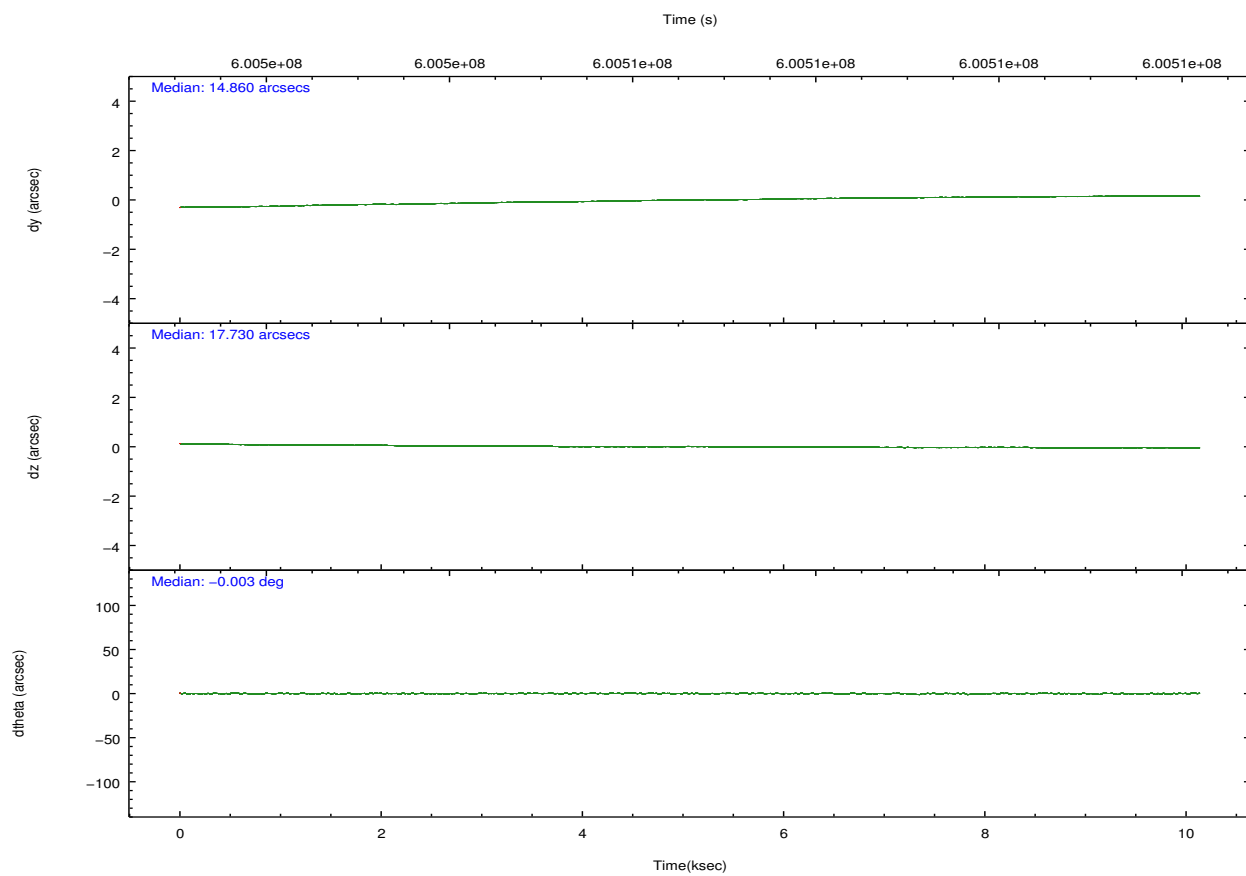
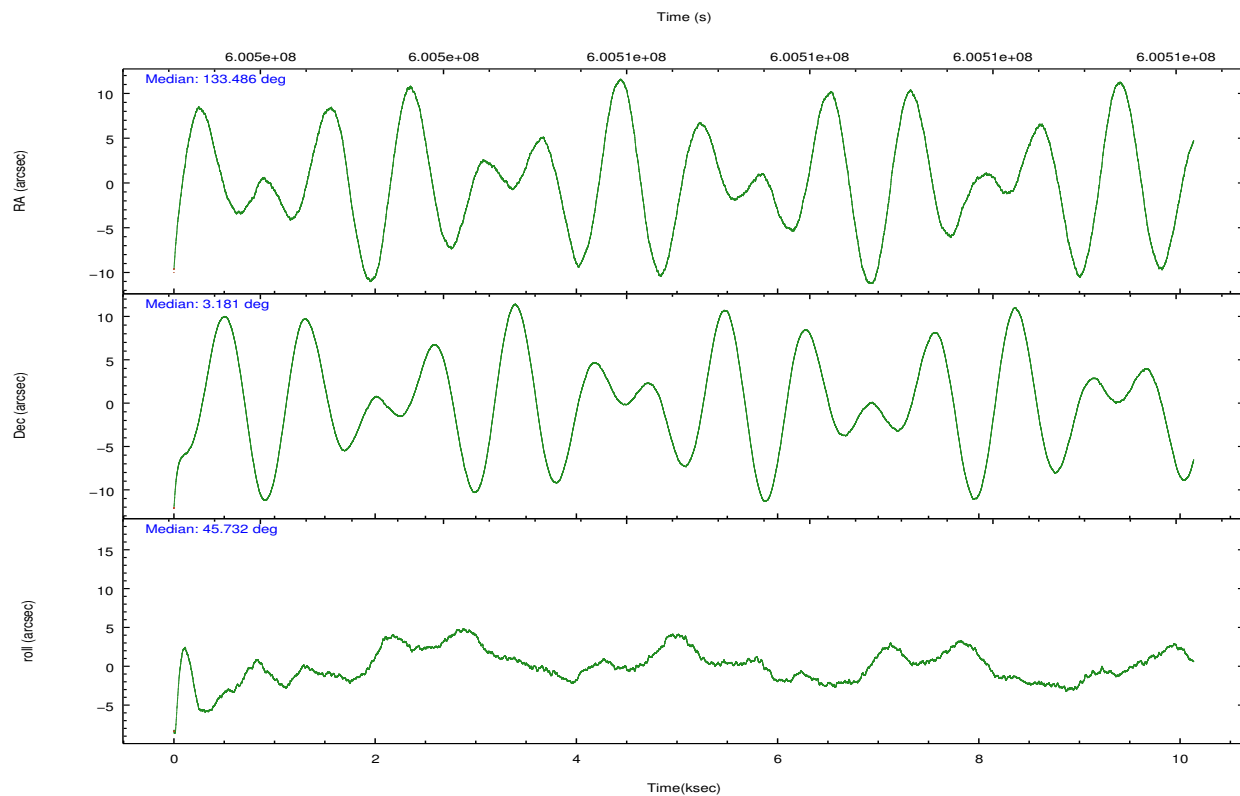


## 2.2 Compared Parameters

Parameter	Planned	Actual	Parameter	Planned	Actual
Instrument	ACIS	ACIS	Obspar format version number	7	7
Detector	ACIS-25678	ACIS-25678	Obspar file type	PREDICTED	ACTUAL
Grating	NONE	NONE	Obspar update status	NONE	UPDATED
Data mode	VFAINT	VFAINT	CCD I0 on	N	N
Observation mode	POINTING	POINTING	CCD I1 on	N	N
[deg] Pointing RA	133.479733	133.4861522481252	CCD I2 on	O2	Y
[deg] Pointing Dec	3.154674	3.181330004305915	CCD I3 on	O1	N
[deg] Pointing Roll	45.580183	45.73644703728344	CCD S0 on	N	N
[mm] SIM focus pos	-0.684267	-0.6828225247311905	CCD S1 on	Y	Y
[mm] SIM defocus	0	0.001444936568705701	CCD S2 on	Y	Y
[mm] SIM translation stage pos	-190.132523	-190.1400660498719	CCD S3 on	Y	Y
[mm] SIM translation stage offset	0	0.00754346686406393	CCD S4 on	Y	Y
[s] Observation start time (MET)	600501708.184000	600500030.06453	CCD S5 on	N	N
Observation start date	2017-01-11T06:00:39	2017-01-11T05:33:50	Number of optional ACIS chips dropped	1	1
[s] Observation end time (MET)	600511708.184000	600512595.02776	On-chip summing requested	N	N
Observation end date	2017-01-11T08:47:19	2017-01-11T09:03:15	Subarray requested	NONE	NONE
Read mode	TIMED	TIMED	Alternating exposures requested	N	N
			[s] Primary exposure time	0.000000	3.1

## 2.3 Aspect



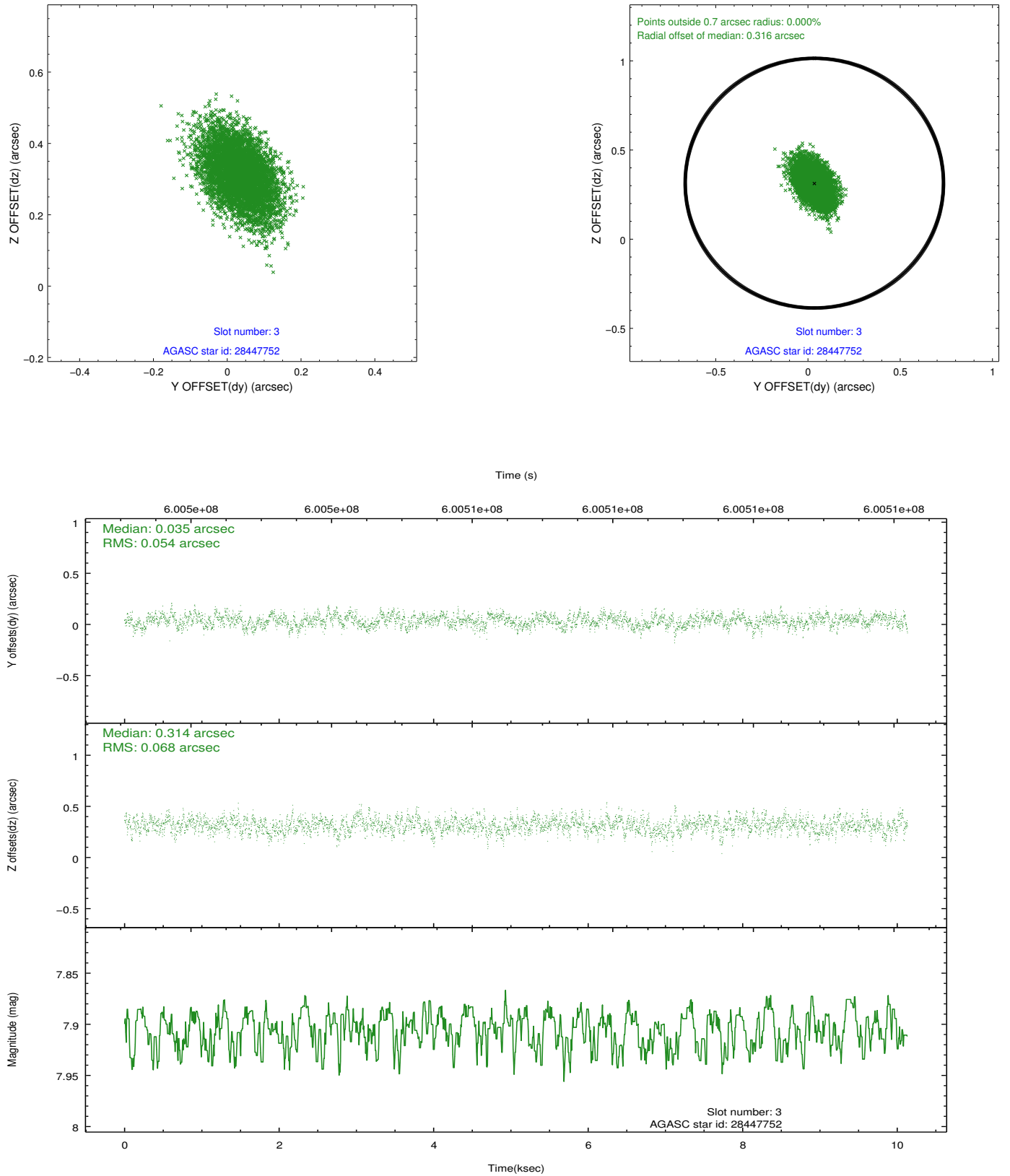


### Slot Statistics

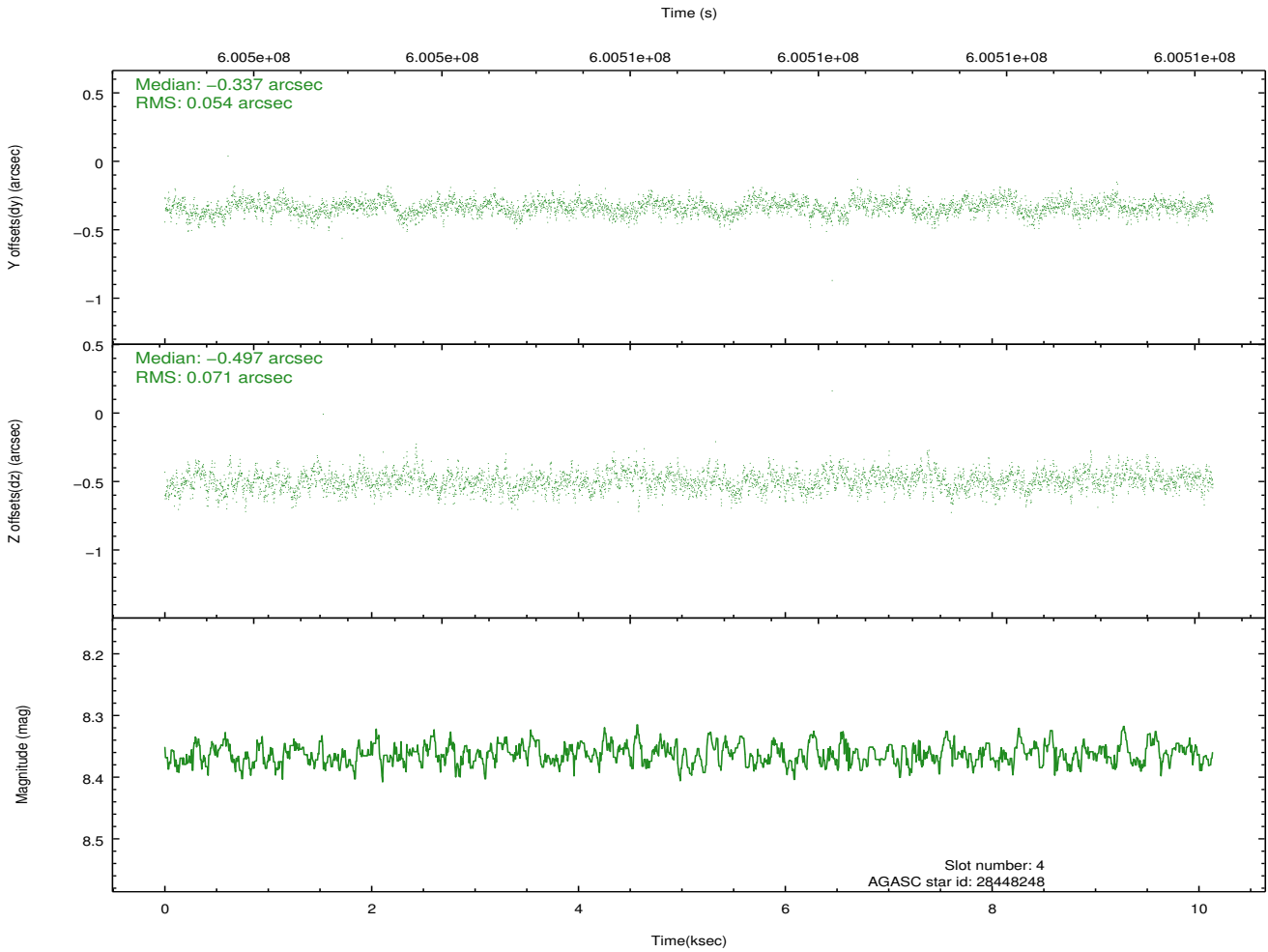
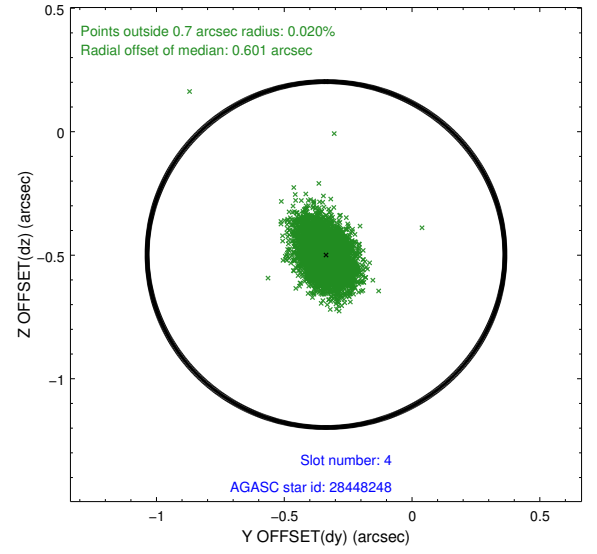
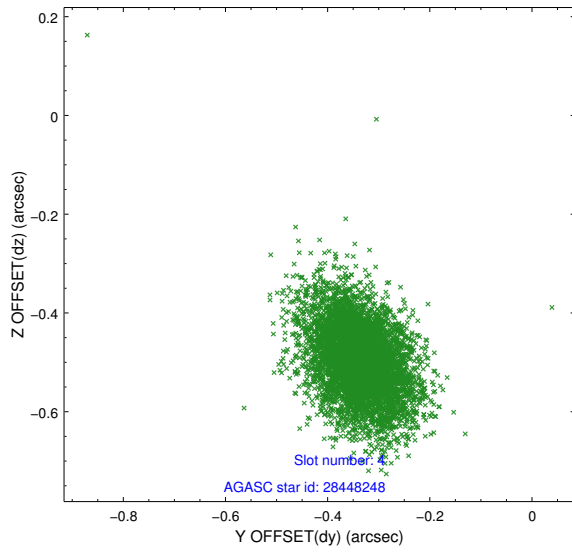
slot	status	used	id	mag	n_pts	med_dy	med_dz	dr1	dr2	ra	dec	mean_y	mean_z
0	FID		ACIS-S-2	6.98	2472	-0.172	-0.097	0.007	0.012	0.000000	0.000000	-767.99	-1739.28
1	FID		ACIS-S-4	7.08	2473	0.434	0.109	0.006	0.011	0.000000	0.000000	2145.68	168.83
2	FID		ACIS-S-5	7.08	2471	-0.294	-0.003	0.007	0.013	0.000000	0.000000	-1820.26	163.03
3	GUIDE	used	28447752	7.91	4941	0.035	0.314	0.090	0.153	133.592640	3.122358	201.32	-371.04
4	GUIDE	used	28448248	8.36	4944	-0.337	-0.497	0.093	0.157	133.174974	3.647559	500.97	2023.64
5	GUIDE	used	28450704	8.03	4945	0.113	0.077	0.098	0.157	133.218421	3.036947	-959.62	374.92
6	GUIDE	used	28451536	7.66	4945	0.261	0.530	0.092	0.168	133.794167	2.628730	-560.20	-2132.41
7	GUIDE	used	28971880	8.92	4941	-0.069	-0.422	0.123	0.223	133.448237	3.916407	1879.44	1999.58

## 2.4 Star Slots

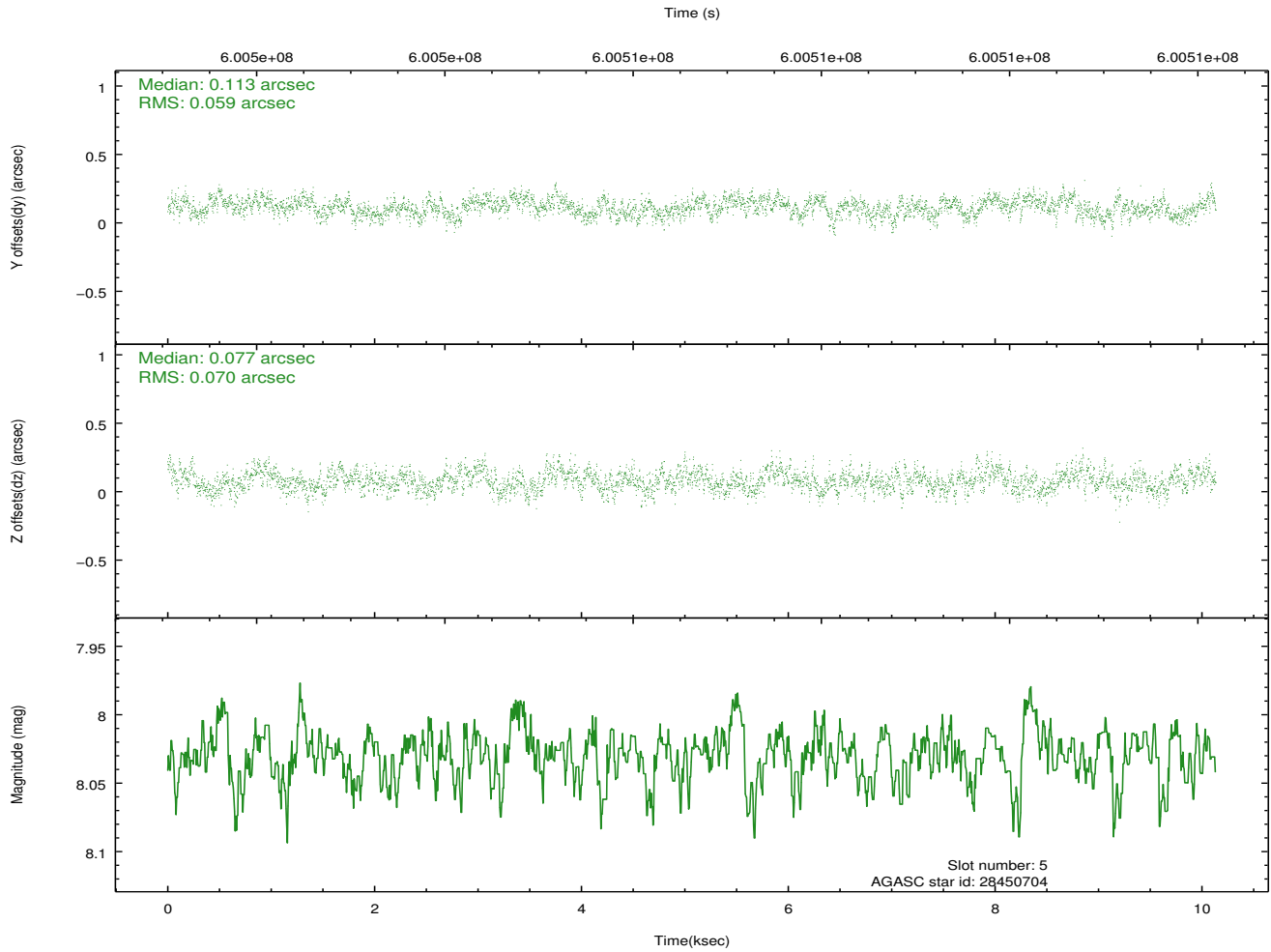
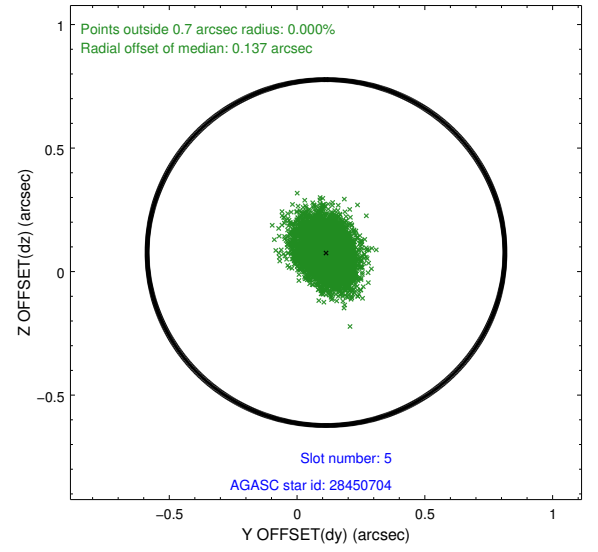
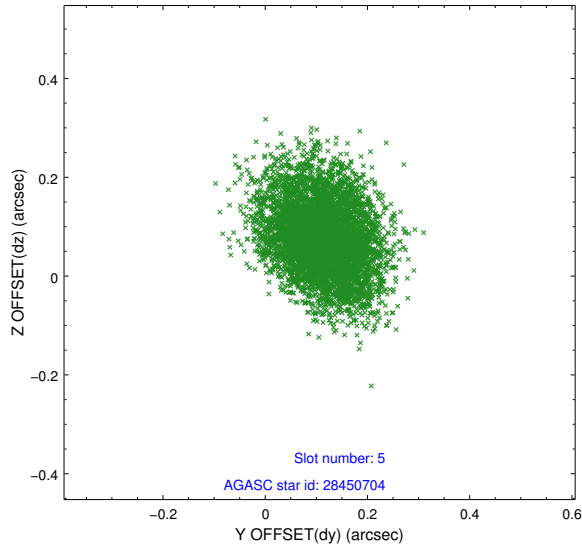
### 2.4.1 Slot 3



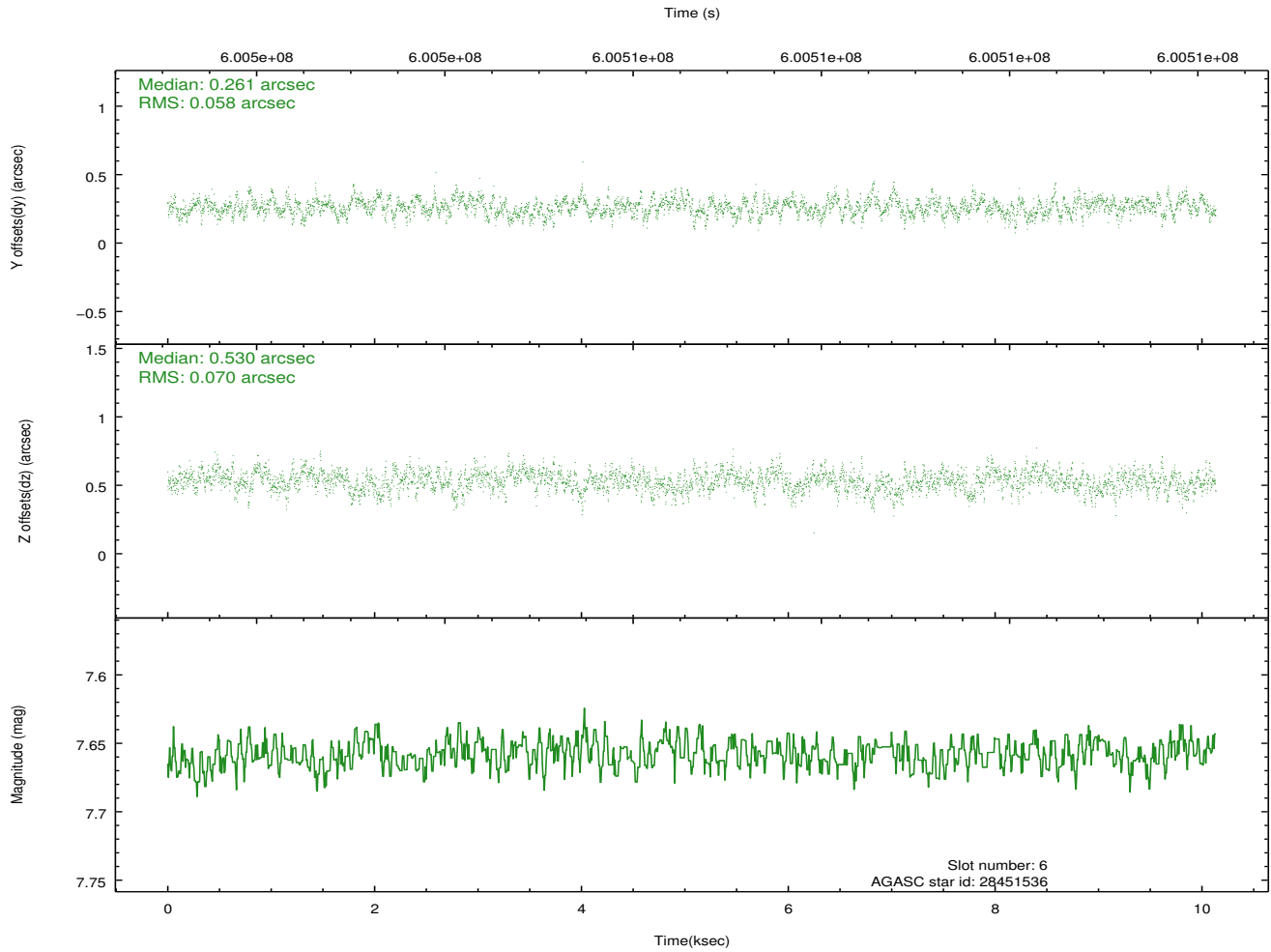
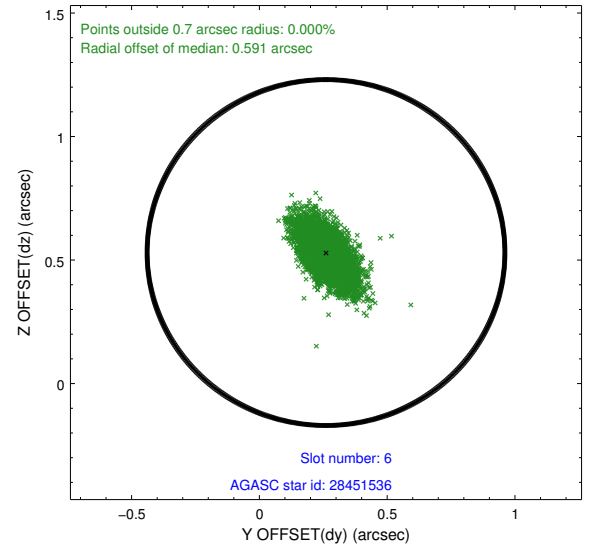
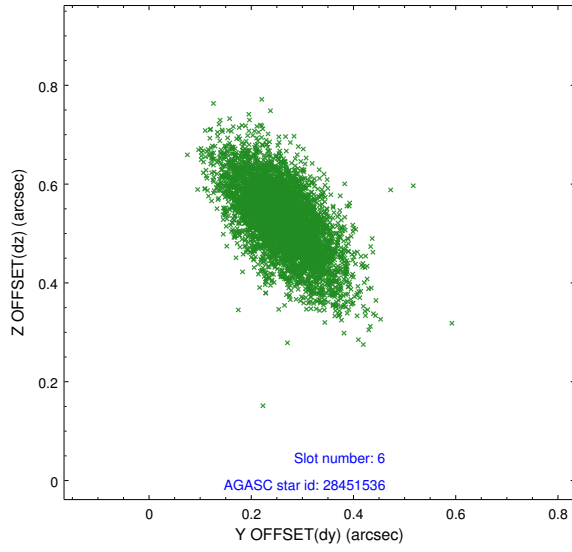
## 2.4.2 Slot 4



### 2.4.3 Slot 5

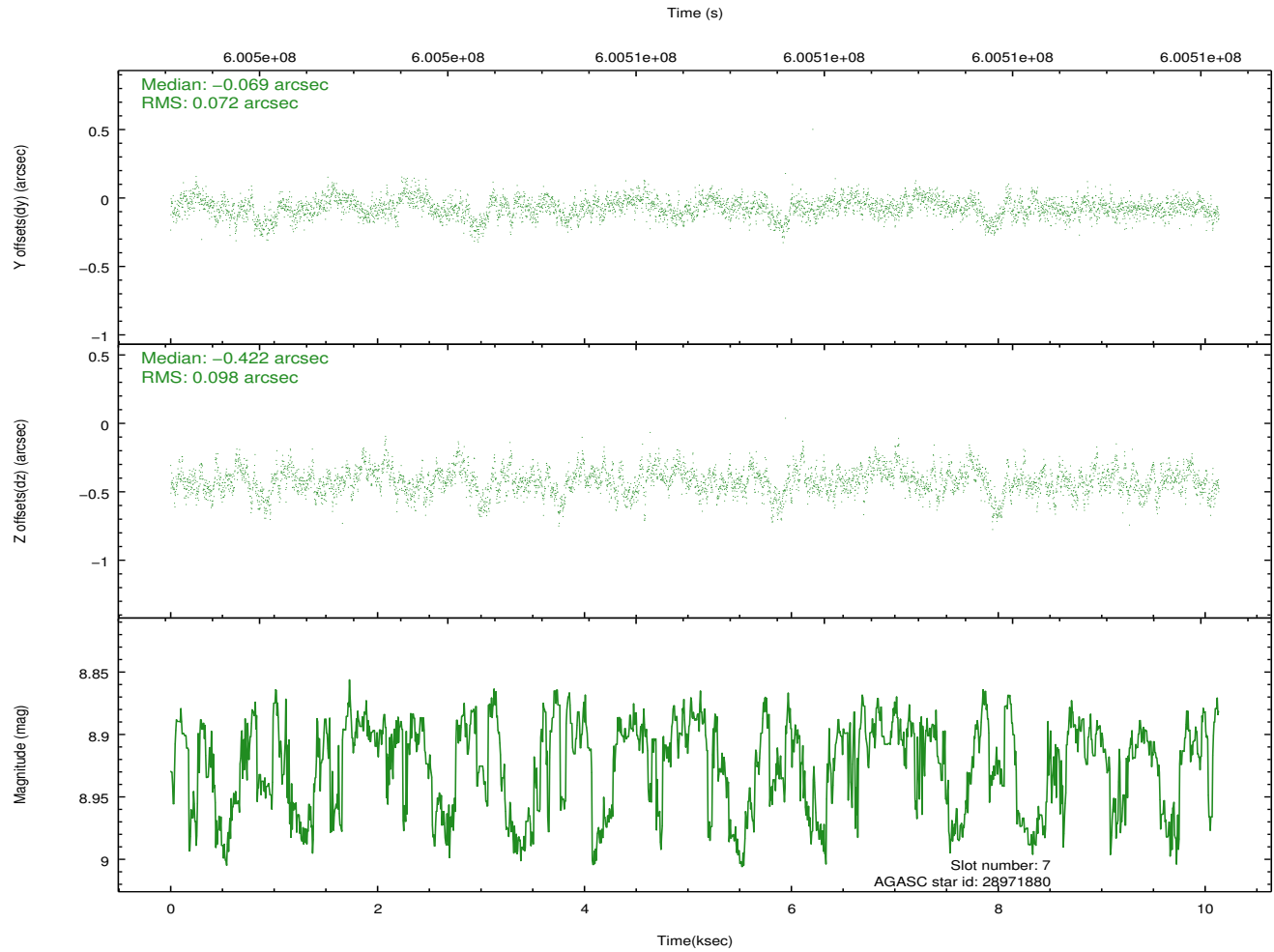
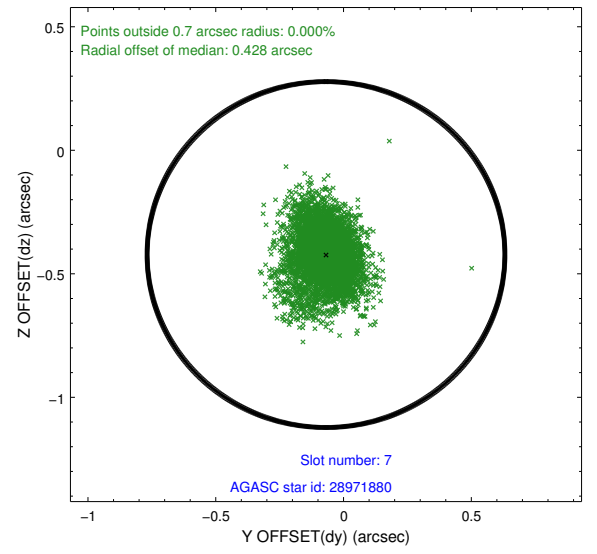
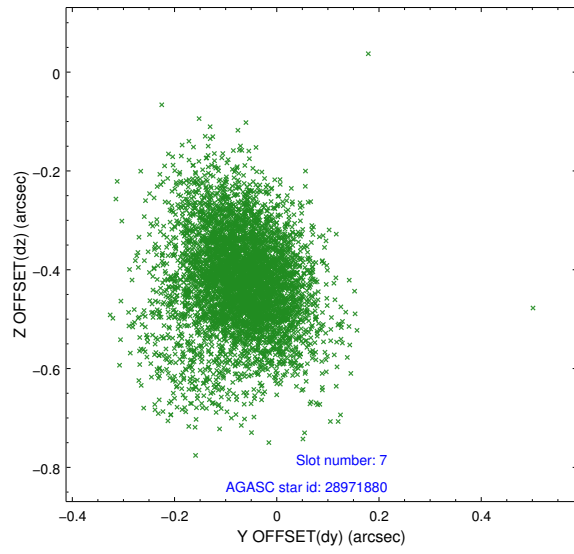


## 2.4.4 Slot 6



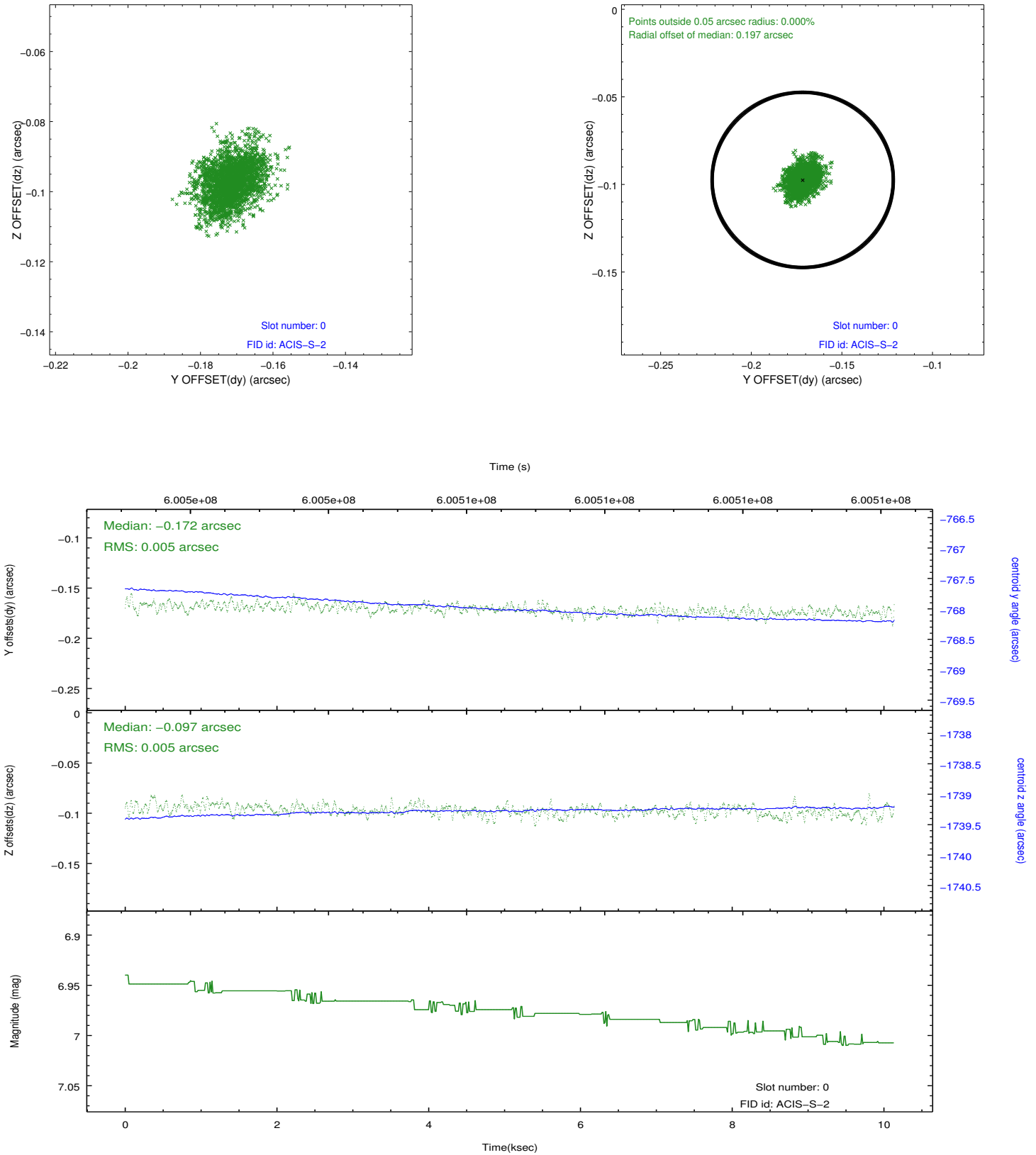


## 2.4.5 Slot 7

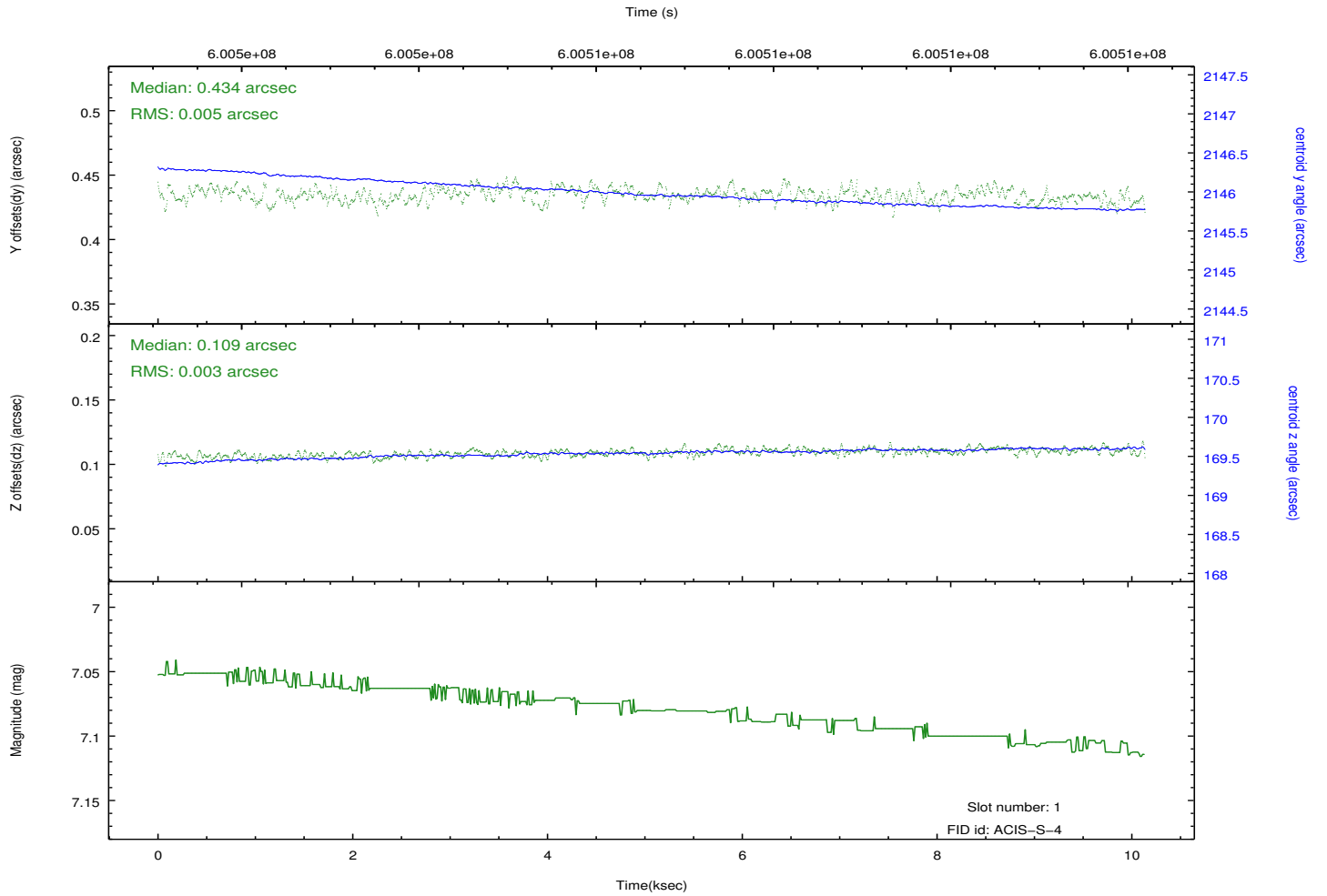
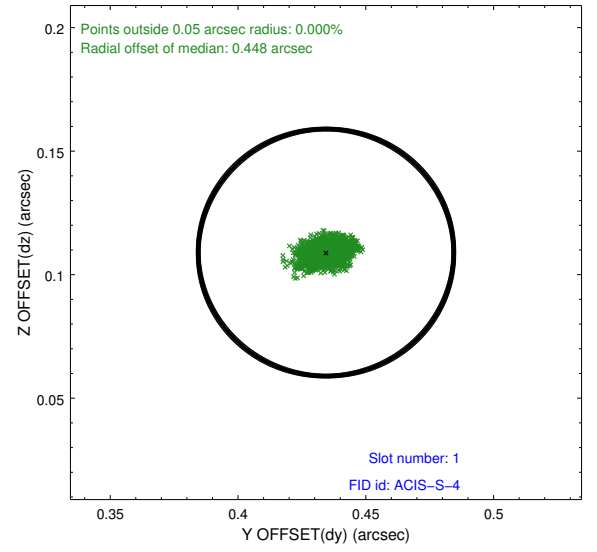
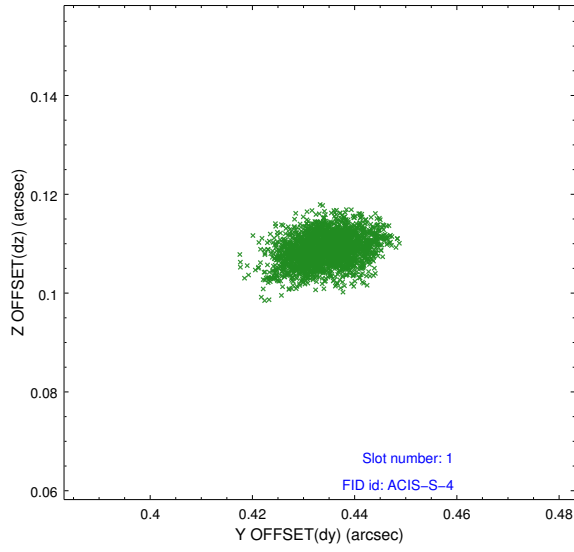


## 2.5 FID Slots

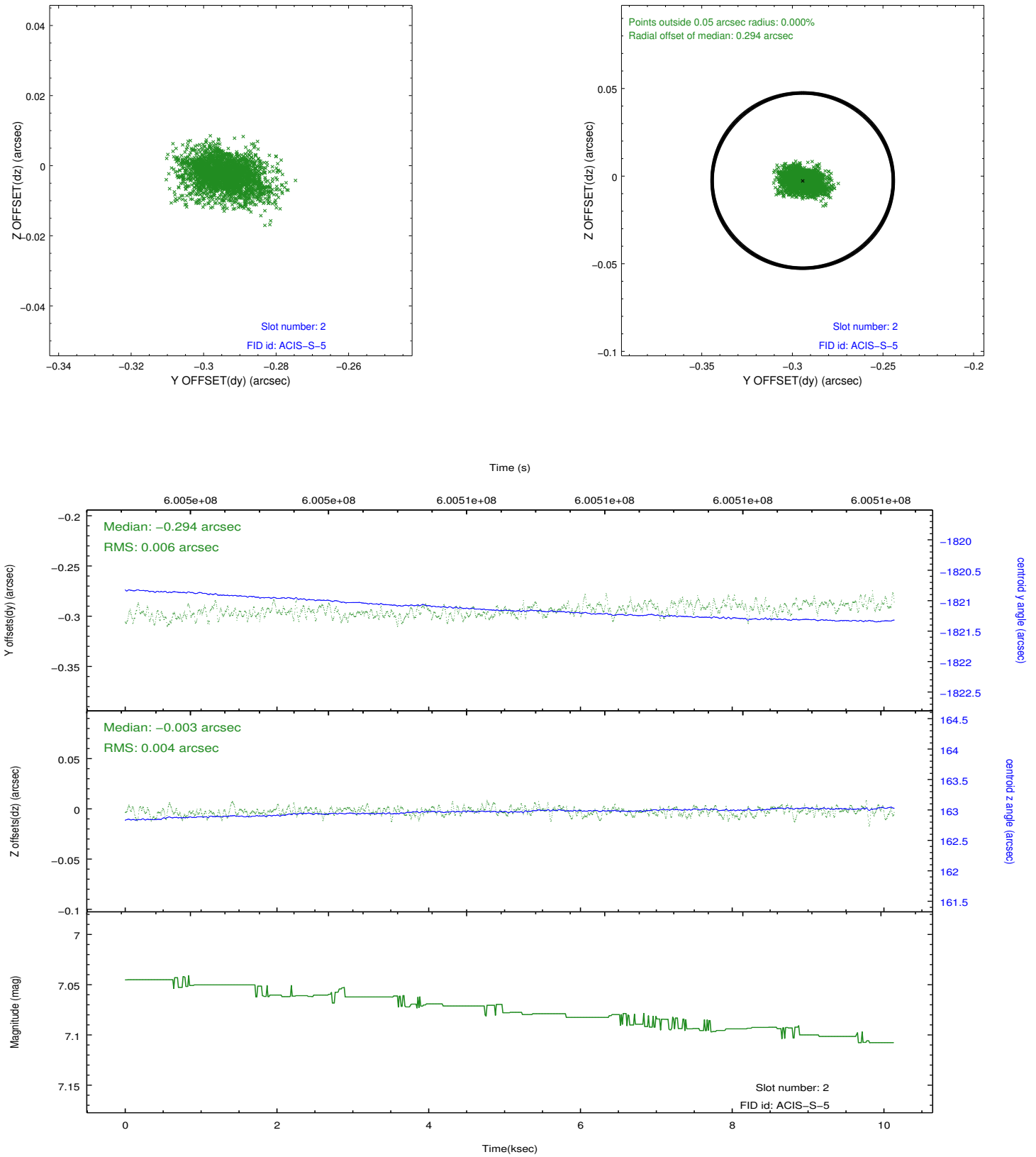
### 2.5.1 Slot 0



## 2.5.2 Slot 1



### 2.5.3 Slot 2



## A Summary

### A.1 Status

V&V Scientist	Jen Lauer
V&V Date (YYYY-MM-DD)	2017.01.11
V&V Edition	1
V&V Disposition and Status	OK
V&V Charge Time	10.046247611642

### A.2 Comments

Optional chip I3 not included.