

V&V Reference Report

L2 ASCDS Version : 10.5.2

Observation 19423 - L2 Version 1
Chandra X-Ray Center

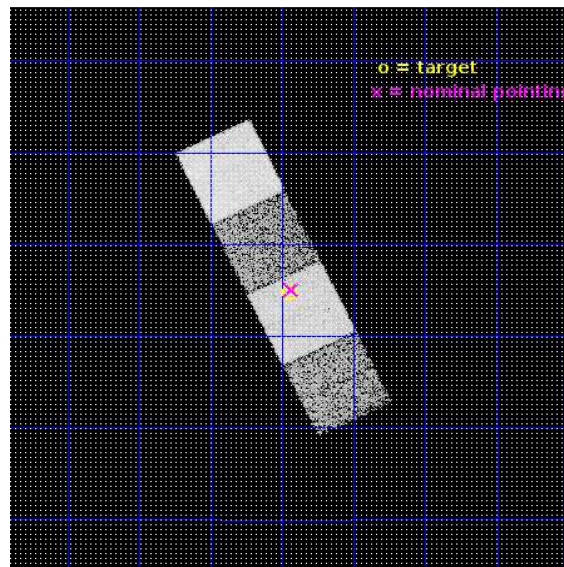
L2 Processing Date : Dec 6 2016

Contents

1	Front	2
2	OBI	3
2.1	OBI	3
2.1.1	Images	3
2.1.2	Bias	3
2.1.3	Parameters	4
2.1.4	Events	4
2.2	Compared Parameters	5
2.3	Aspect	6
2.4	Star Slots	9
2.4.1	Slot 3	9
2.4.2	Slot 4	10
2.4.3	Slot 5	11
2.4.4	Slot 6	12
2.4.5	Slot 7	13
2.5	FID Slots	14
2.5.1	Slot 0	14
2.5.2	Slot 1	15
2.5.3	Slot 2	16
A	Summary	17
A.1	Status	17
A.2	Comments	17

1 Front

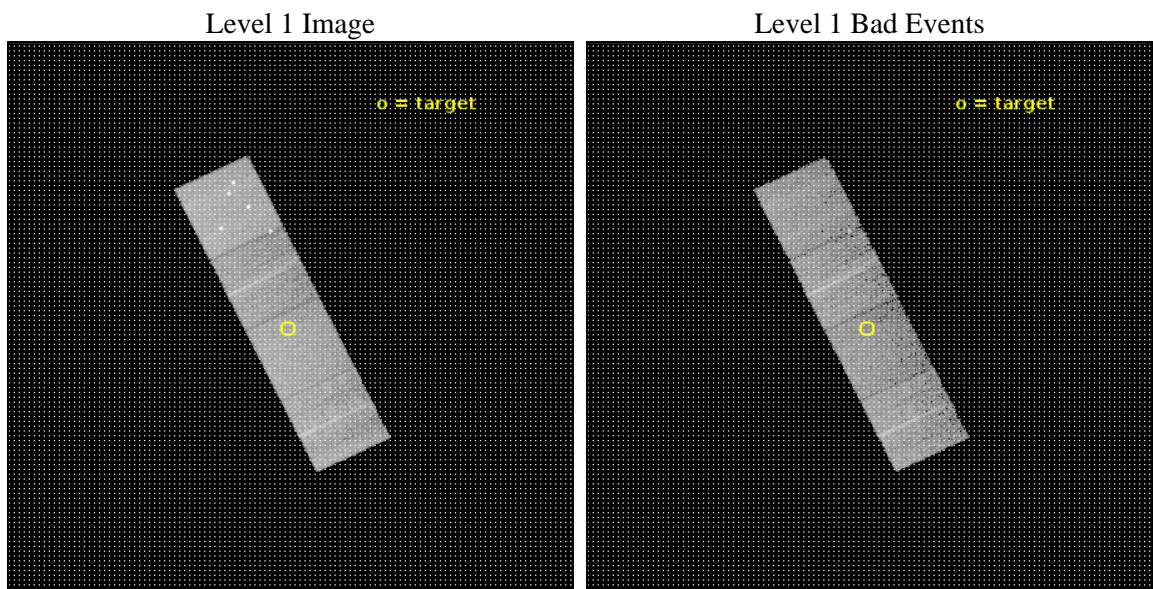
seq_num	601380	Sequence number
obs_id	19423	Observation id
title	Spiral galaxies of the Virgo cluster	Proposal title
observer	Roberto Soria	Principal investigator
object	NGC 4480	Source name
dtcycle	0	
cycle	P	events from which exps? Prim/Second/Both
ra_targ	187.611667	Observer's specified target RA [deg]
dec_targ	4.246583	Observer's specified target Dec [deg]
ra_nom	187.60944077689	Nominal RA [deg]
dec_nom	4.2509809613244	Nominal Dec [deg]
roll_nom	64.126678292359	Nominal Roll [deg]
revision	1	Processing version of data
ontime	8056.4328391552	Sum of GTIs [s]
livetime	7951.1696130521	Livetime [s]
ontime5	8056.3917992115	Sum of GTIs [s]
ontime6	8056.3507591486	Sum of GTIs [s]
ontime7	8056.4328391552	Sum of GTIs [s]
ontime8	8056.3097192049	Sum of GTIs [s]
l2events	82406	Number of level 2 events



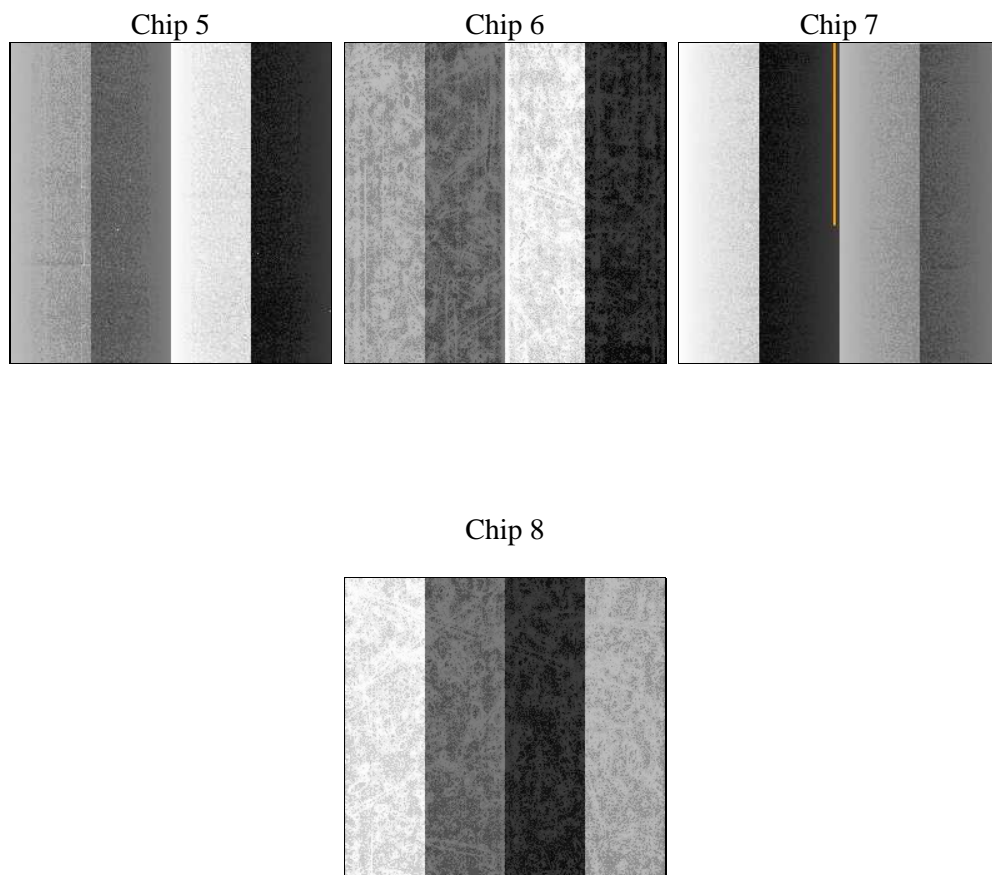
2 OBI

2.1 OBI

2.1.1 Images



2.1.2 Bias



2.1.3 Parameters

obi_num	0	Obi number	sched_exp_time	8000.000000	[s] Scheduled observation exposure time
ascdsver	10.5.2	Processing system revision	ontime	8056.4328391552	Sum of GTIs [s]
caldsver	4.7.2	 	ontime5	8056.3917992115	Sum of GTIs [s]
date	2016-12-07T02:38:37	Date and time of file creation	ontime6	8056.3507591486	Sum of GTIs [s]
revision	1	Processing version of data	ontime7	8056.4328391552	Sum of GTIs [s]
			ontime8	8056.3097192049	Sum of GTIs [s]
			l1events	299798	Number of level 1 events

2.1.4 Events

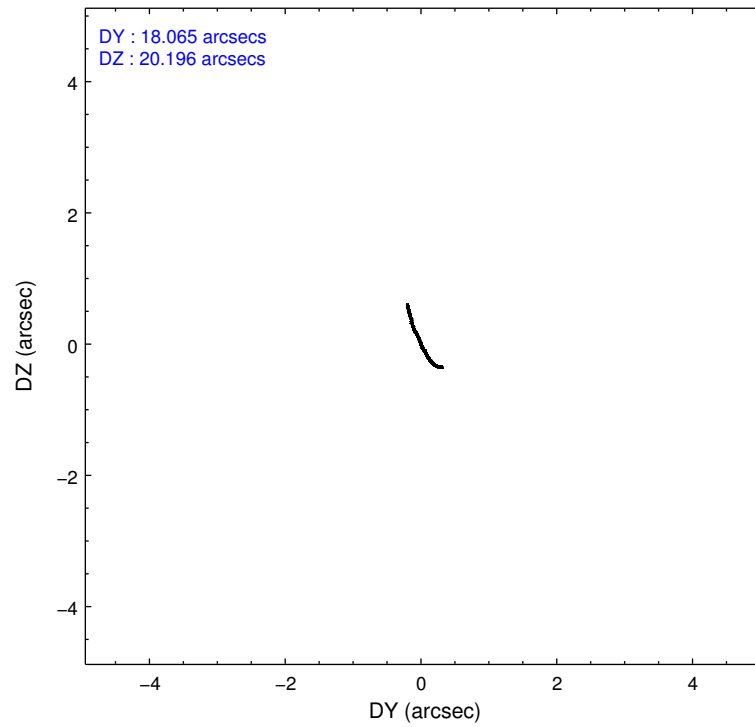
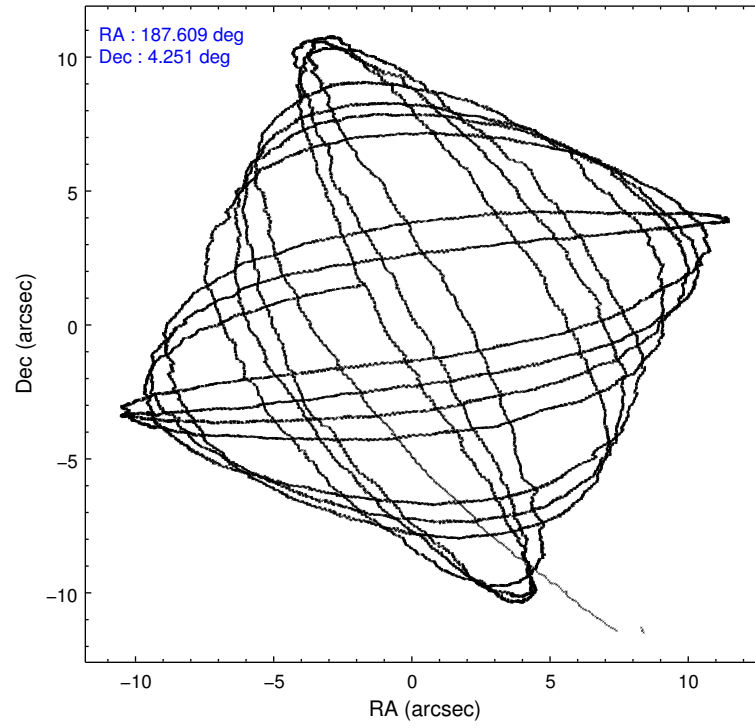
	ccd 5	ccd 6	ccd 7	ccd 8
level 1 events	95824	58959	72372	72643
rejected events	46464	52539	40950	55076
rejected %	48%	89%	56%	75%

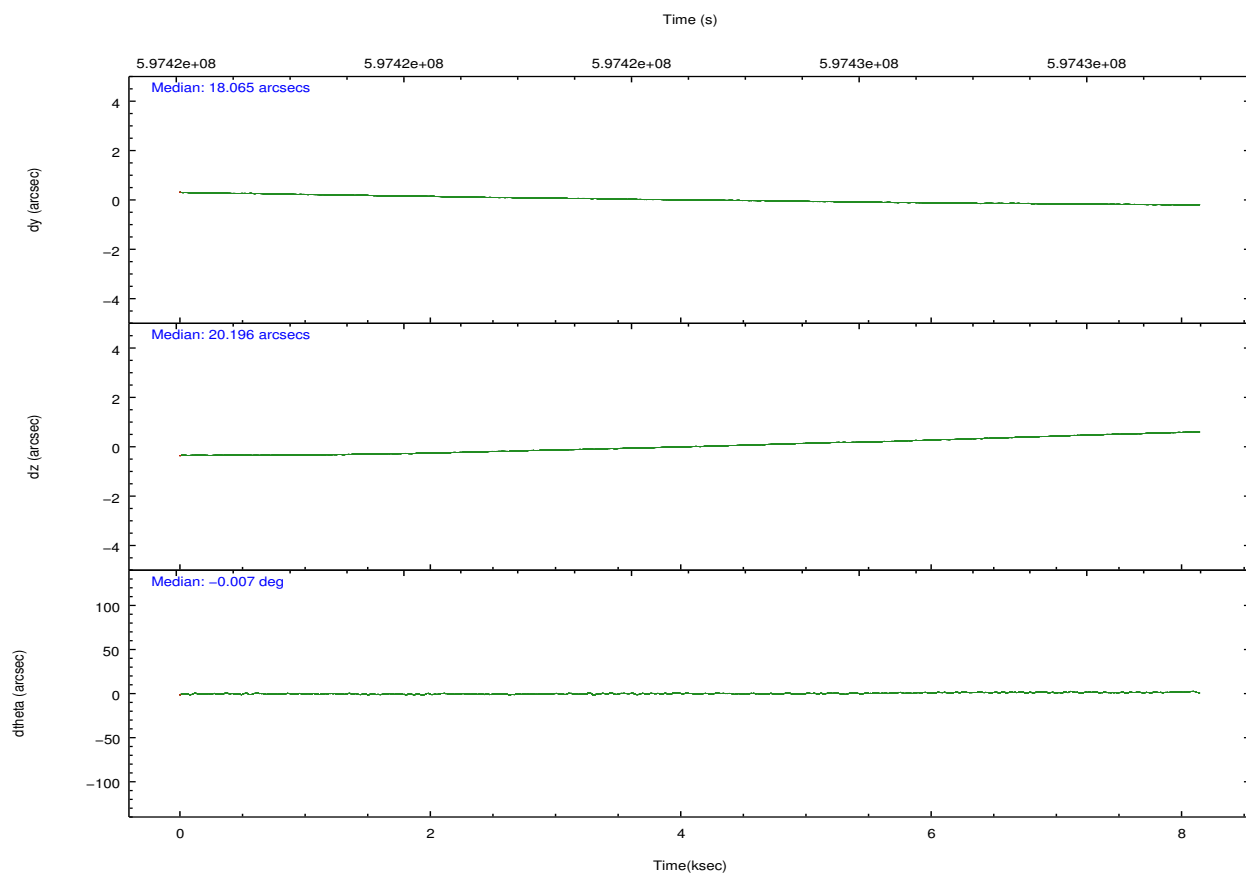
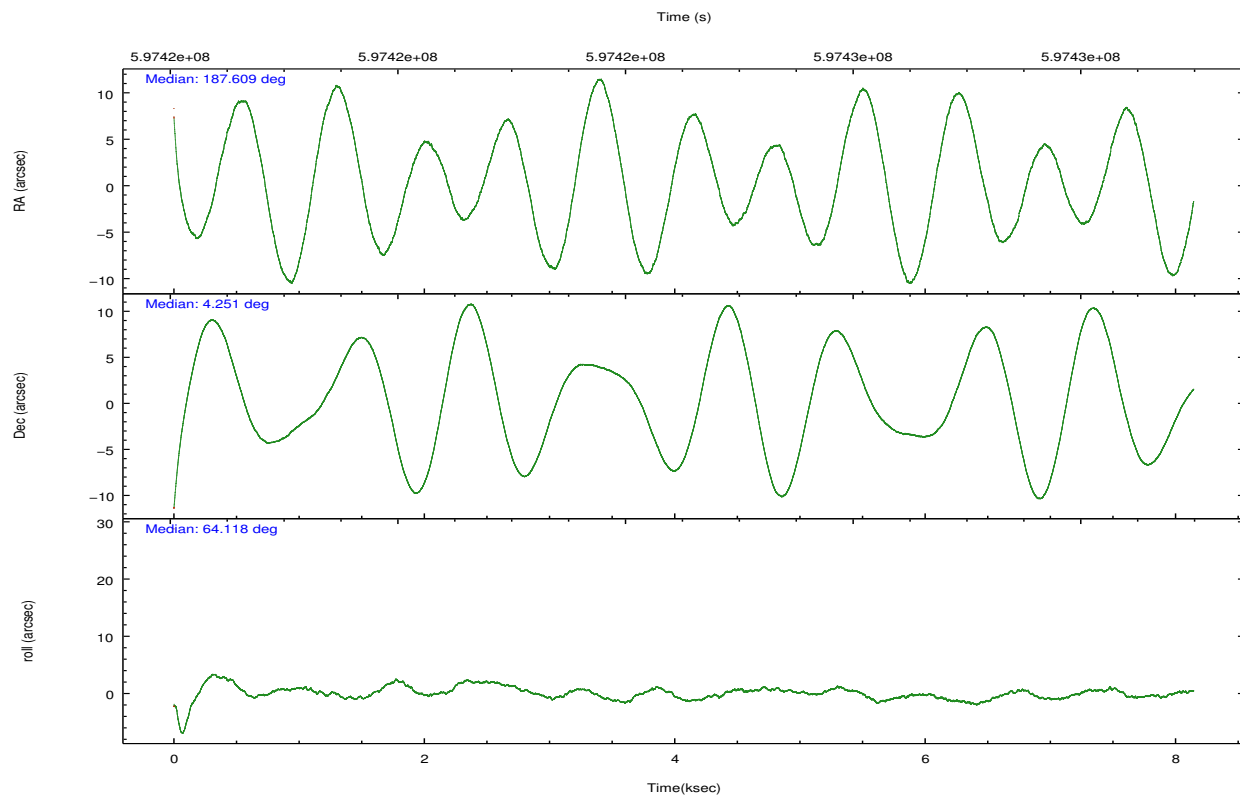
	ccd 5	ccd 6	ccd 7	ccd 8
grade 0 events	8667	1999	2624	5081
	9%	3%	3%	6%
grade 1 events	539	19	98	59
	0%	0%	0%	0%
grade 2 events	14169	1571	6679	4279
	14%	2%	9%	5%
grade 3 events	1475	603	2380	1841
	1%	1%	3%	2%
grade 4 events	1321	641	2289	1630
	1%	1%	3%	2%
grade 5 events	5950	2467	6921	3960
	6%	4%	9%	5%
grade 6 events	23747	1606	17462	4758
	24%	2%	24%	6%
grade 7 events	39956	50053	33919	51035
	41%	84%	46%	70%

2.2 Compared Parameters

Parameter	Planned	Actual	Parameter	Planned	Actual
Instrument	ACIS	ACIS	Obspar format version number	7	7
Detector	ACIS-5678	ACIS-5678	Obspar file type	PREDICTED	ACTUAL
Grating	NONE	NONE	Obspar update status	NONE	UPDATED
Data mode	VFAINT	VFAINT	Number of optional ACIS chips dropped	0	0
Observation mode	POINTING	POINTING	On-chip summing requested	N	N
[deg] Pointing RA	187.611837	187.6094407768929	Subarray requested	NONE	NONE
[deg] Pointing Dec	4.223626	4.250980961324401	Alternating exposures requested	N	N
[deg] Pointing Roll	63.969874	64.12667829235923	[s] Primary exposure time	0.000000	3.1
[mm] SIM focus pos	-0.684267	-0.6828225247311905			
[mm] SIM defocus	0	0.001444936568705701			
[mm] SIM translation stage pos	-190.132523	-190.1400660498719			
[mm] SIM translation stage offset	0	0.00754346686406393			
[s] Observation start time (MET)	597420610.184000	597419425.18639			
Observation start date	2016-12-06T14:09:02	2016-12-06T13:50:25			
[s] Observation end time (MET)	597428610.184000	597429689.02448			
Observation end date	2016-12-06T16:22:22	2016-12-06T16:41:29			
Read mode	TIMED	TIMED			

2.3 Aspect



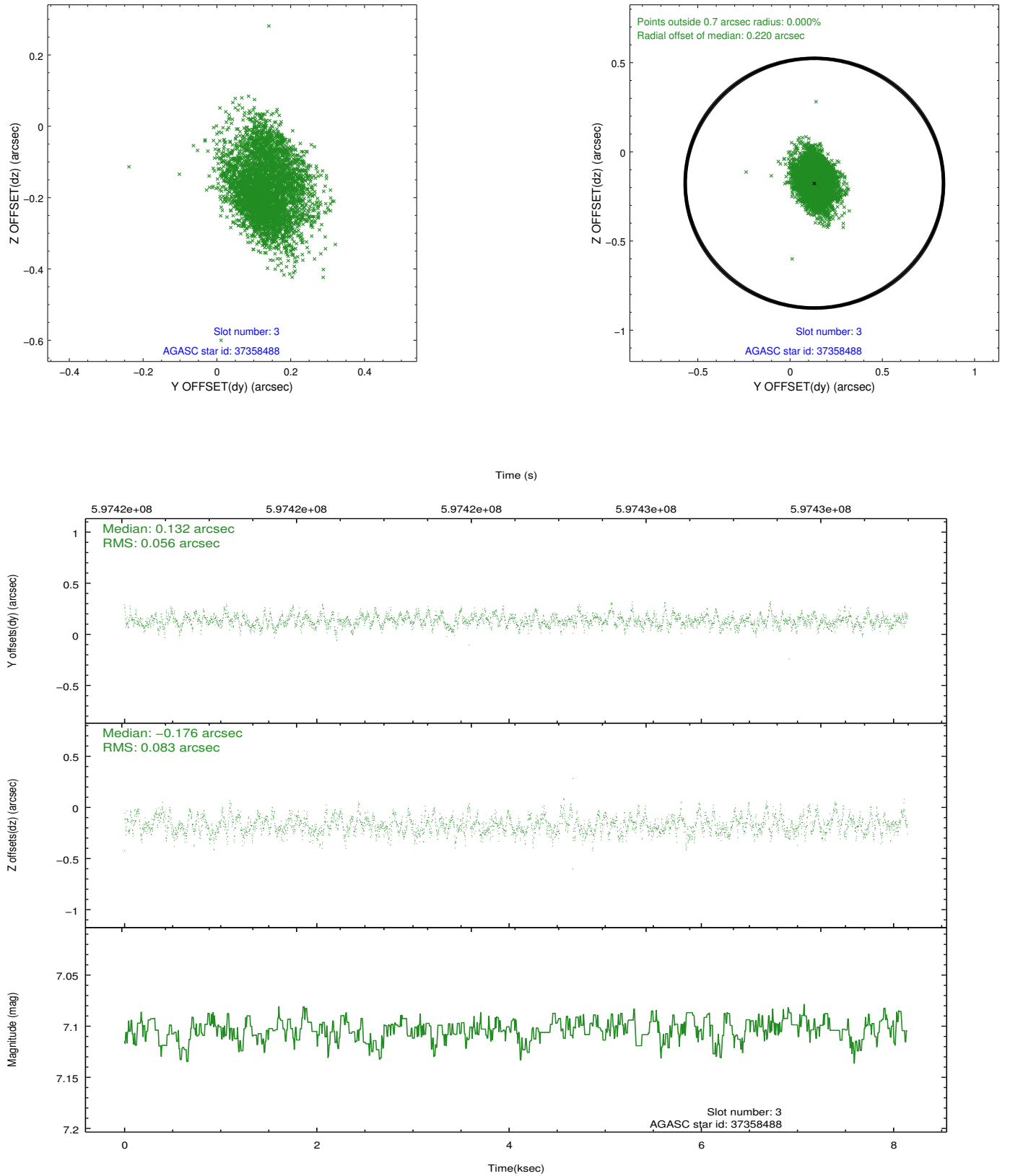


Slot Statistics

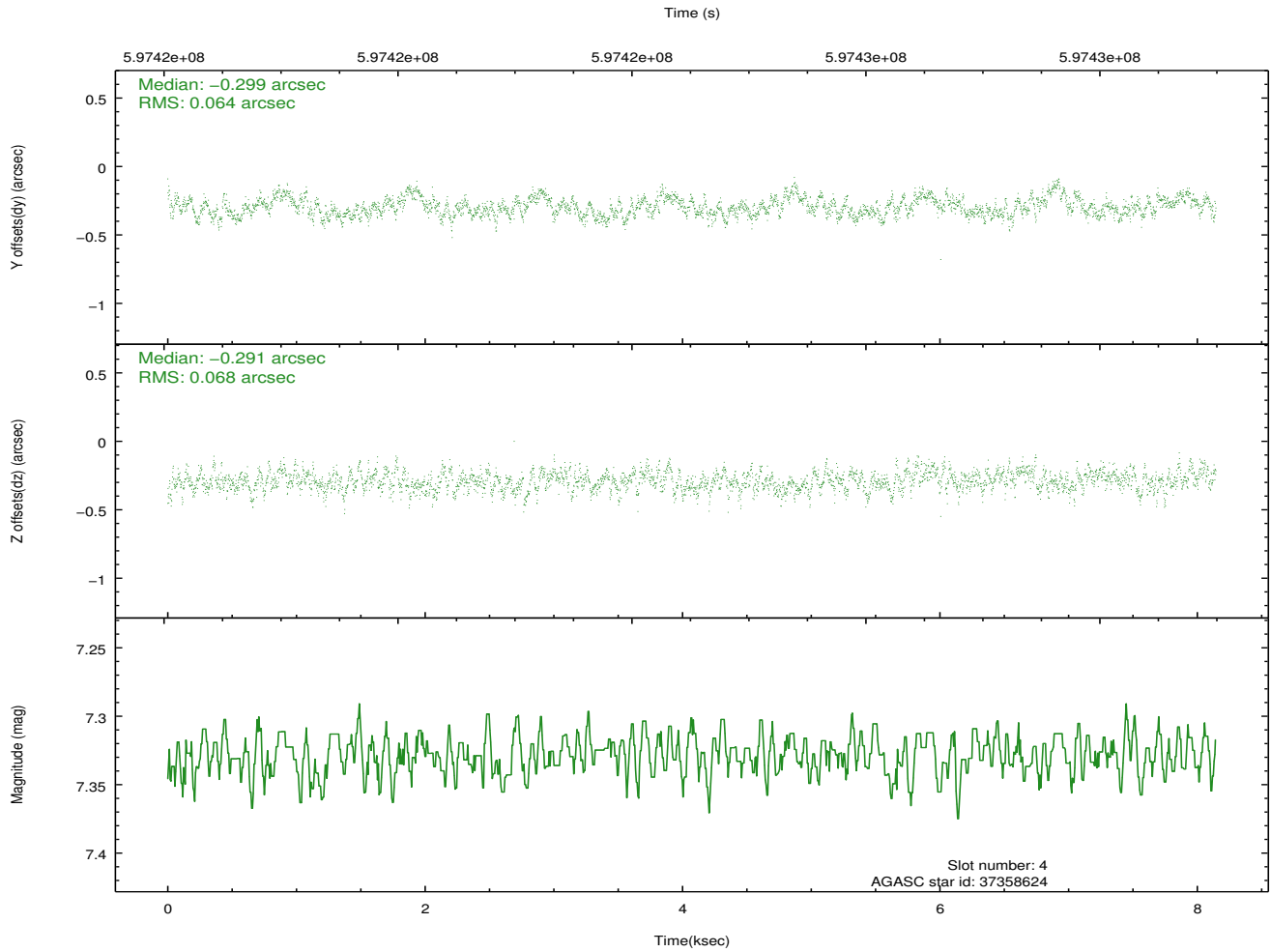
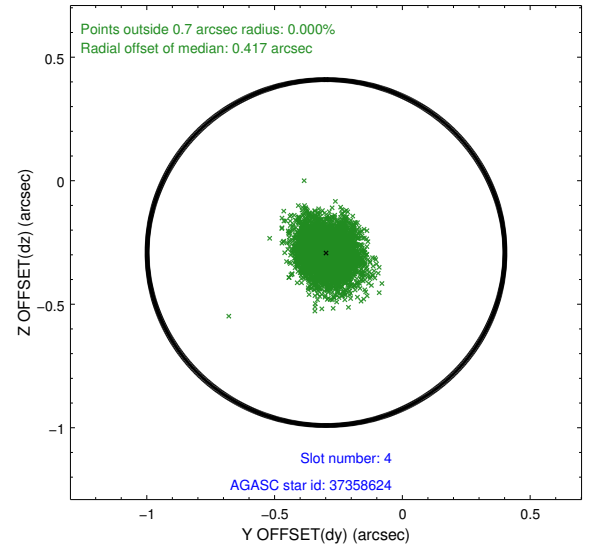
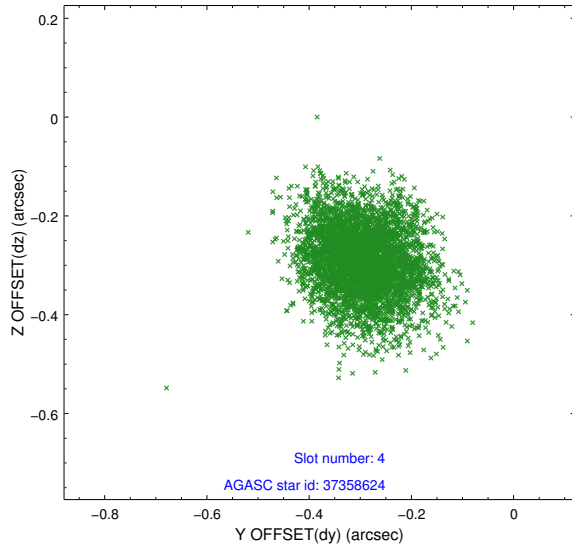
slot	status	used	id	mag	n_pts	med_dy	med_dz	dr1	dr2	ra	dec	mean_y	mean_z
0	FID		ACIS-S-1	7.22	1987	0.155	-0.100	0.018	0.036	0.000000	0.000000	925.12	-1737.46
1	FID		ACIS-S-5	7.23	1987	-0.334	0.069	0.010	0.015	0.000000	0.000000	-1824.05	159.47
2	FID		ACIS-S-6	7.36	1986	0.159	0.046	0.019	0.030	0.000000	0.000000	389.84	804.26
3	GUIDE	used	37358488	7.10	3973	0.132	-0.176	0.107	0.172	187.076739	4.396562	-283.32	1999.56
4	GUIDE	used	37358624	7.33	3974	-0.299	-0.291	0.101	0.161	187.367341	4.838237	1602.69	1761.83
5	GUIDE	used	38277656	8.94	3908	-0.098	-0.169	0.135	0.228	187.816013	4.666784	1755.45	41.33
6	GUIDE	used	38279600	9.05	3972	0.638	0.822	0.168	0.261	188.016310	3.893520	-428.23	-1825.29
7	GUIDE	used	38280560	7.81	3972	-0.378	-0.196	0.092	0.152	187.837260	4.720166	1961.07	57.23

2.4 Star Slots

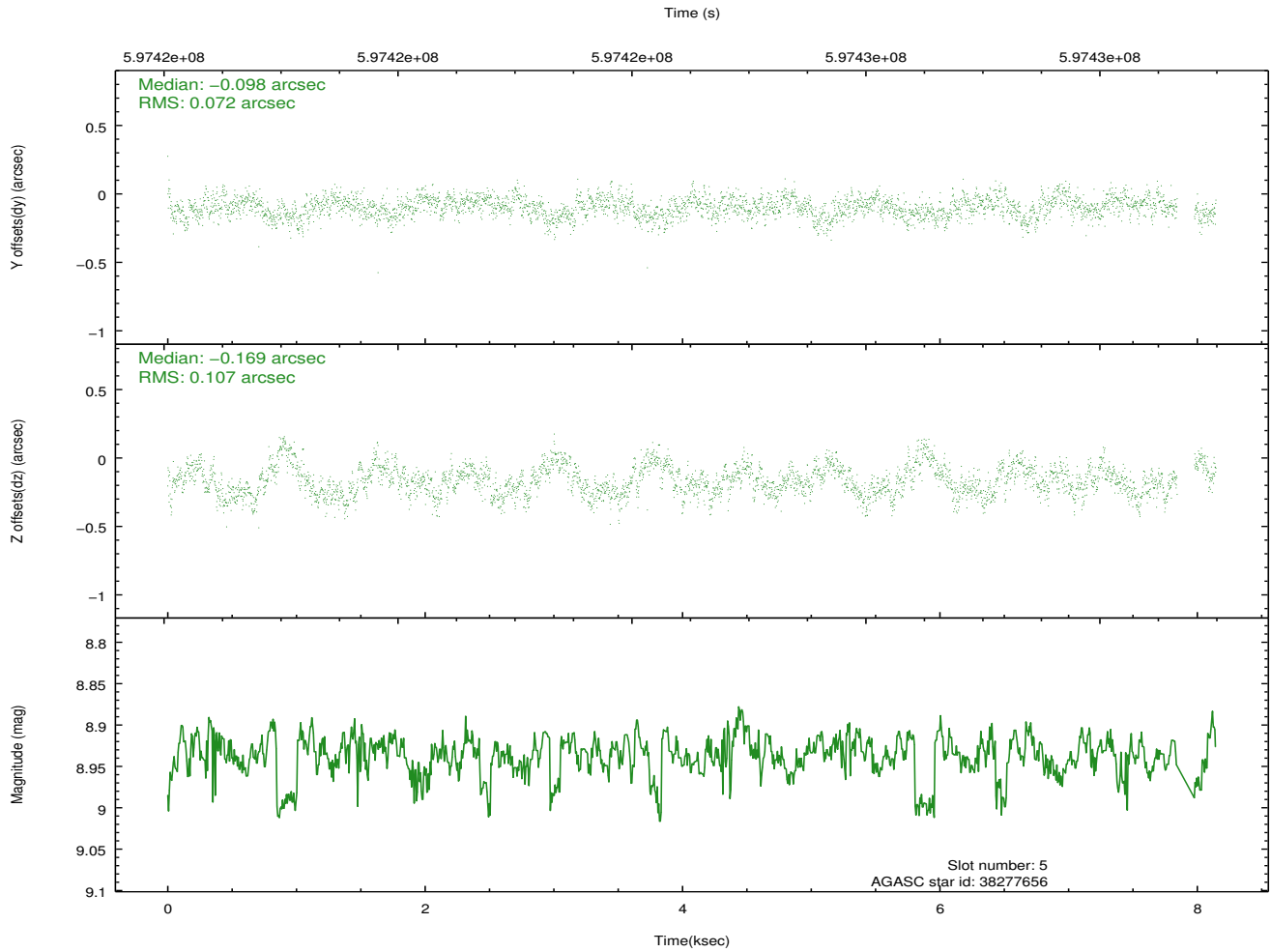
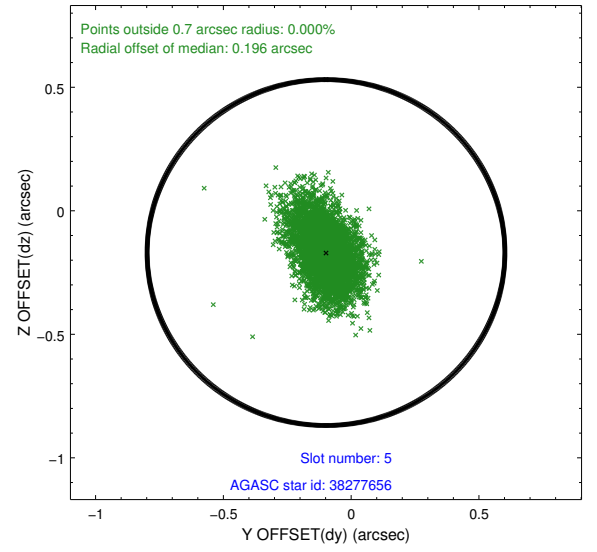
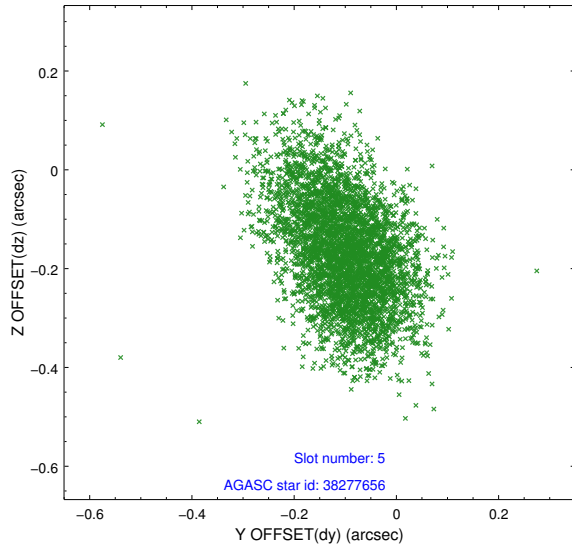
2.4.1 Slot 3



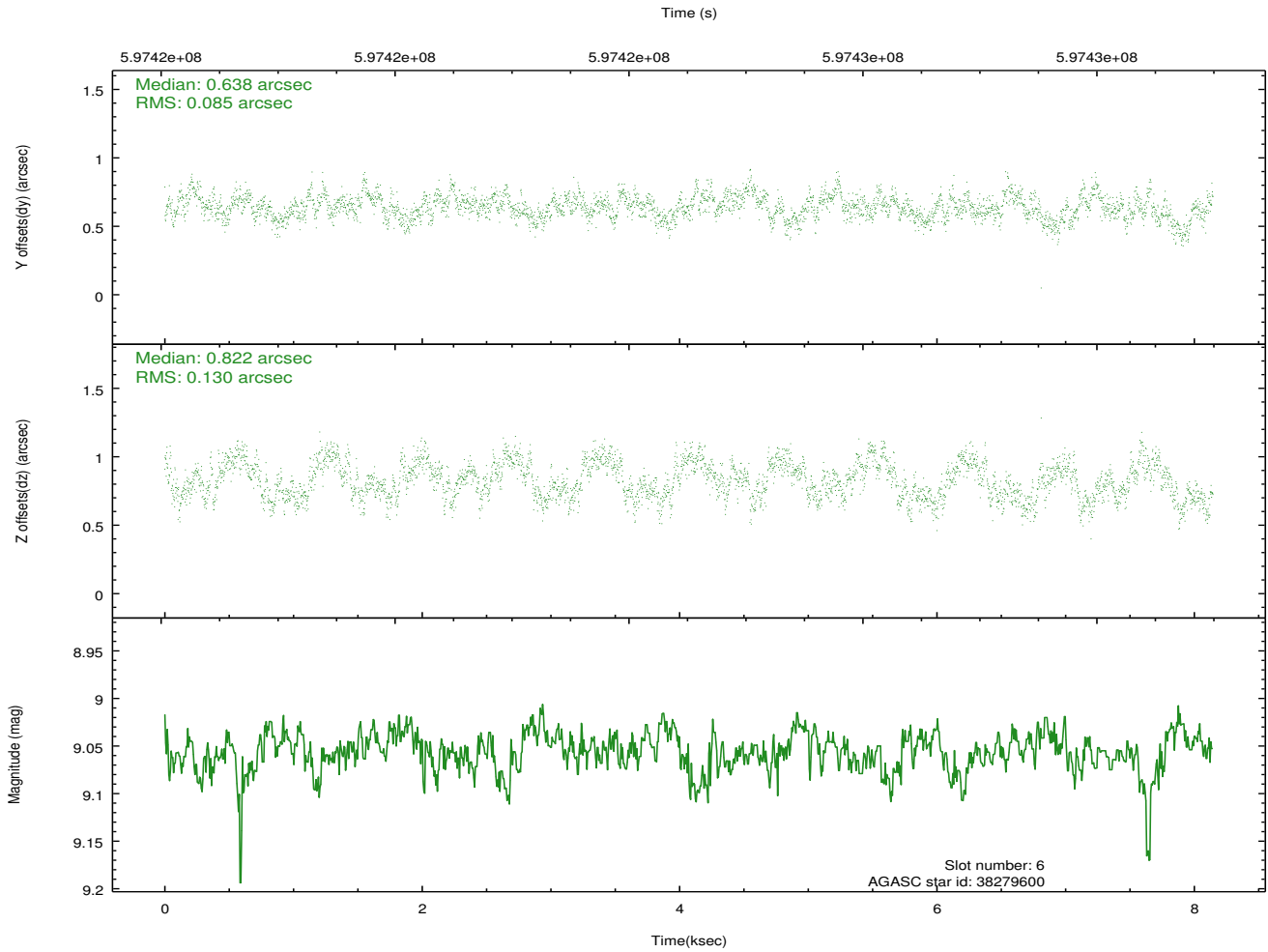
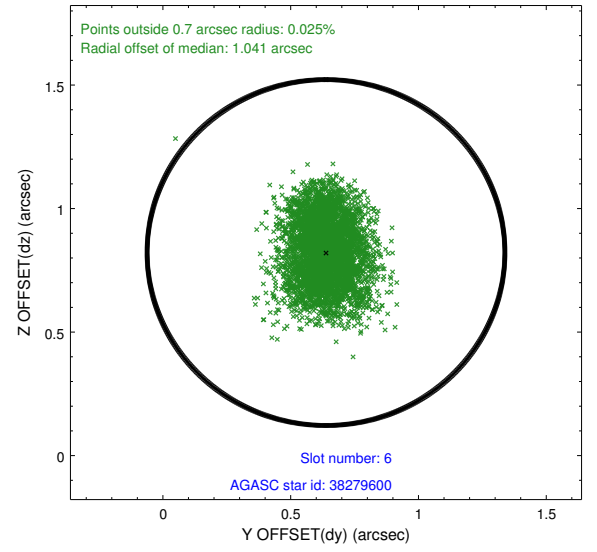
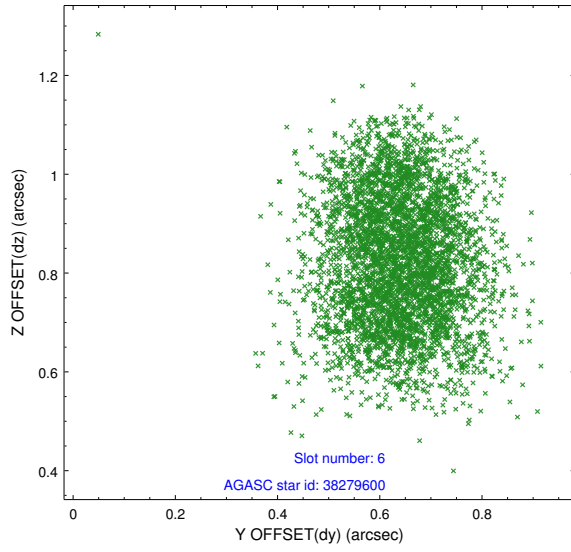
2.4.2 Slot 4



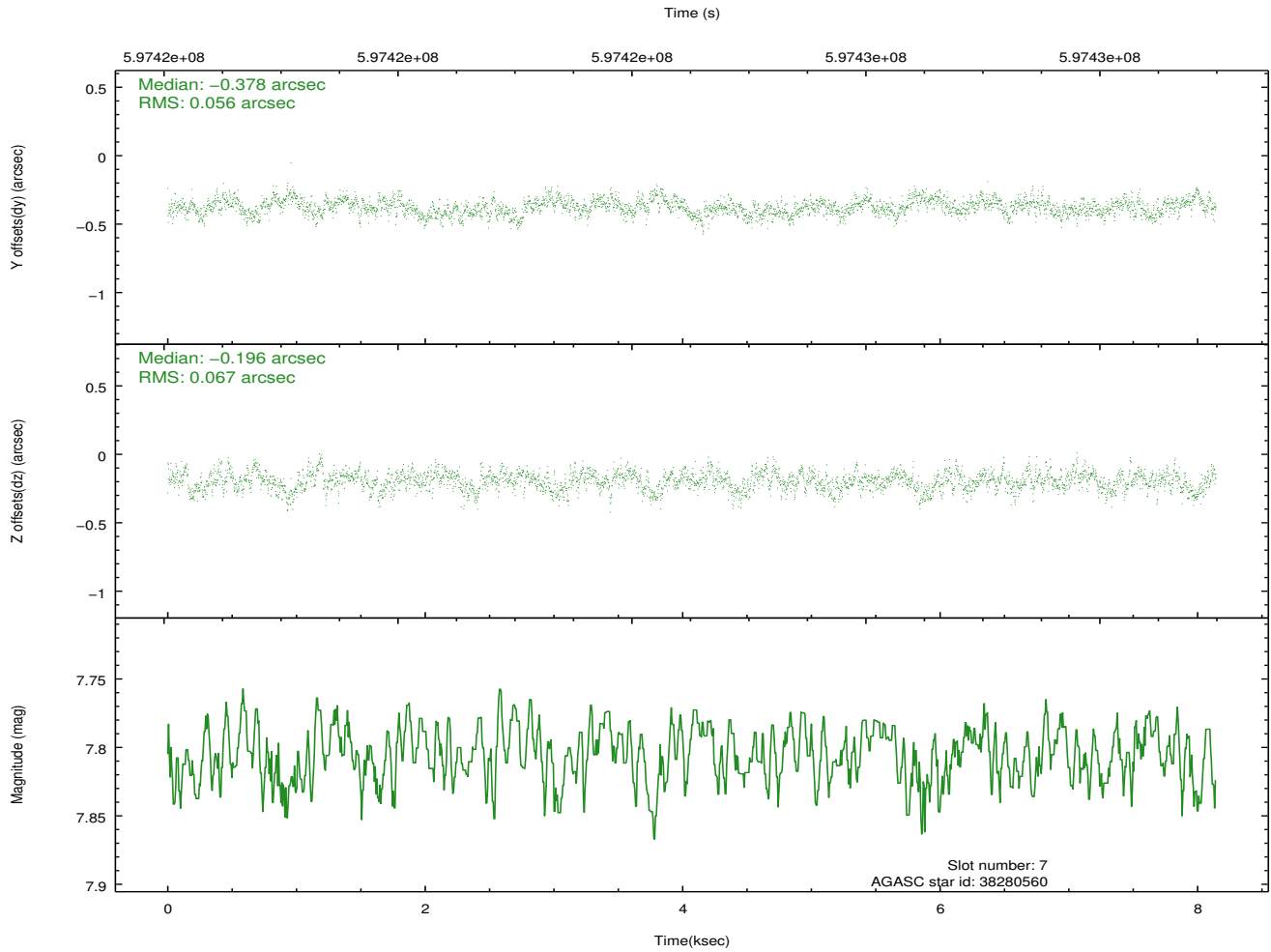
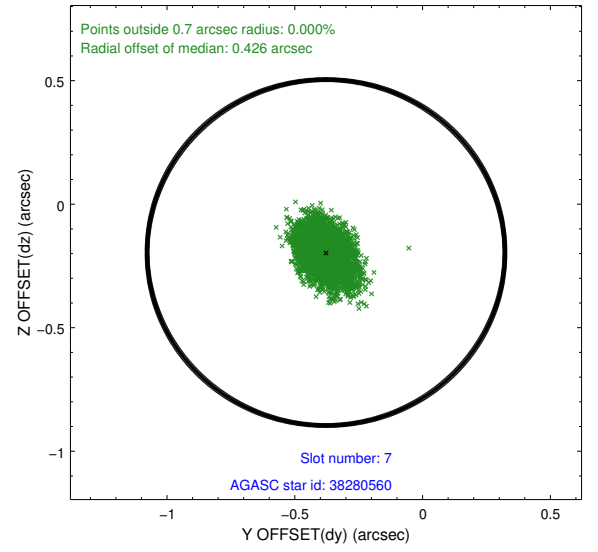
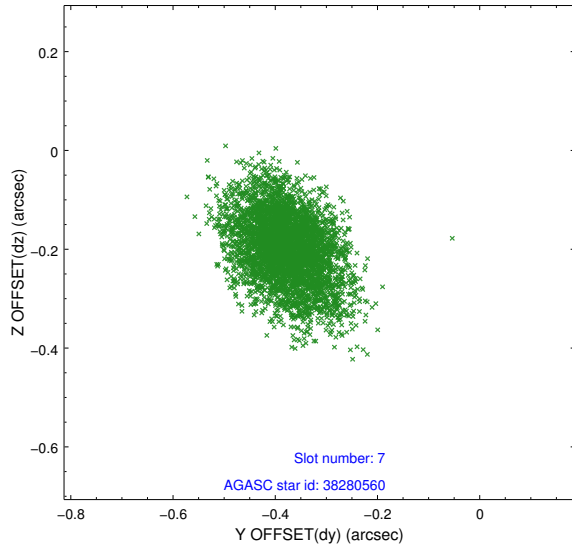
2.4.3 Slot 5



2.4.4 Slot 6

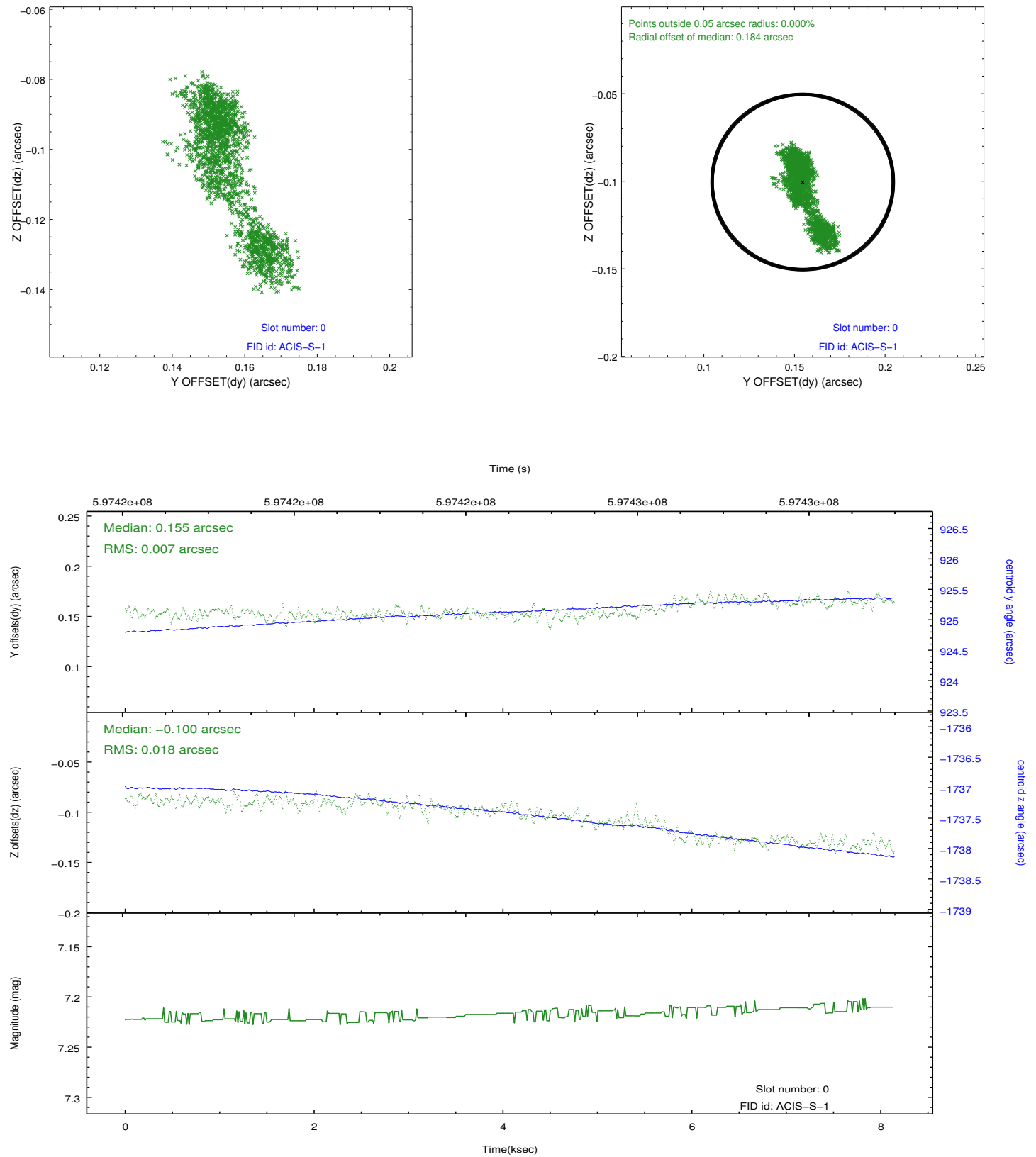


2.4.5 Slot 7

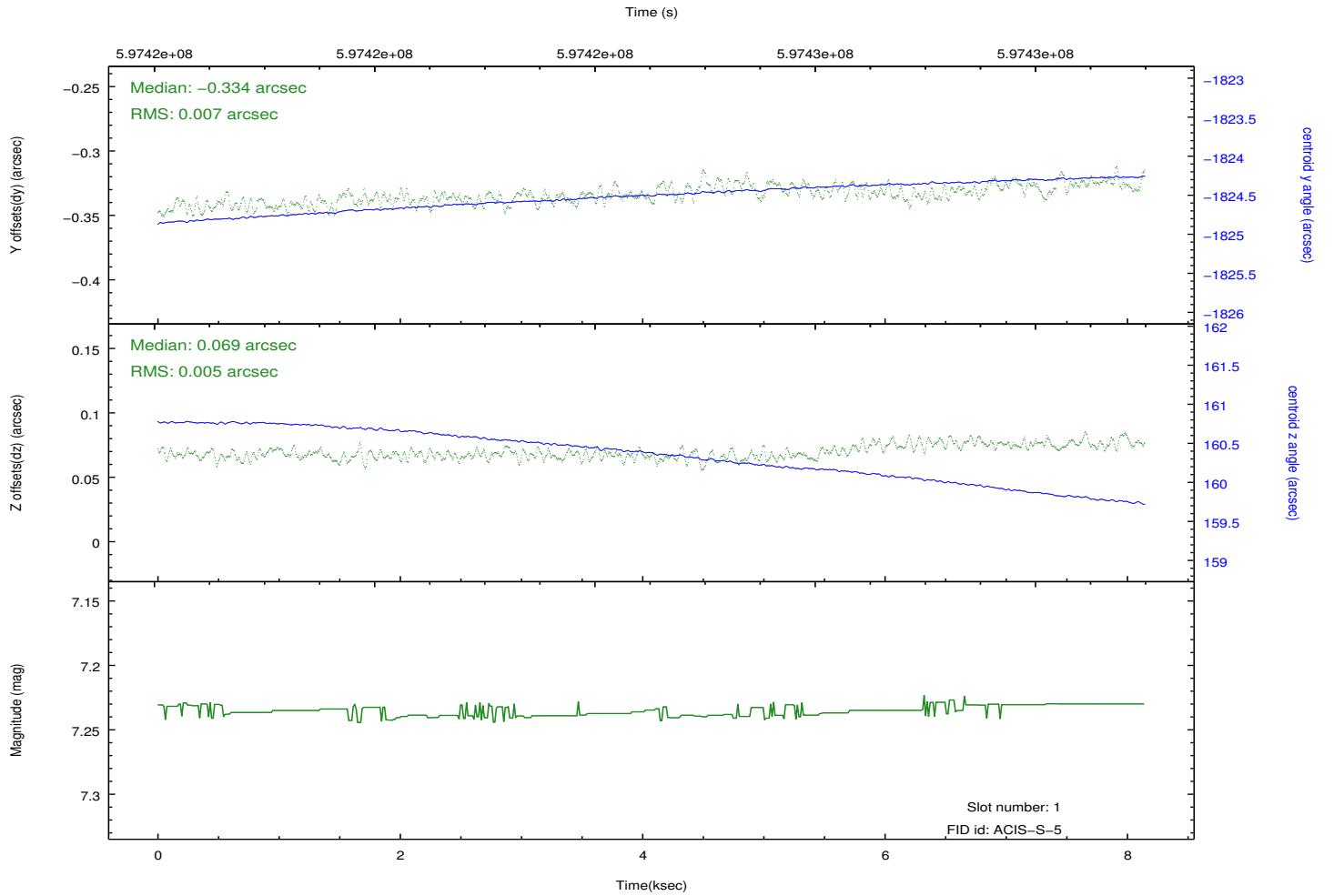
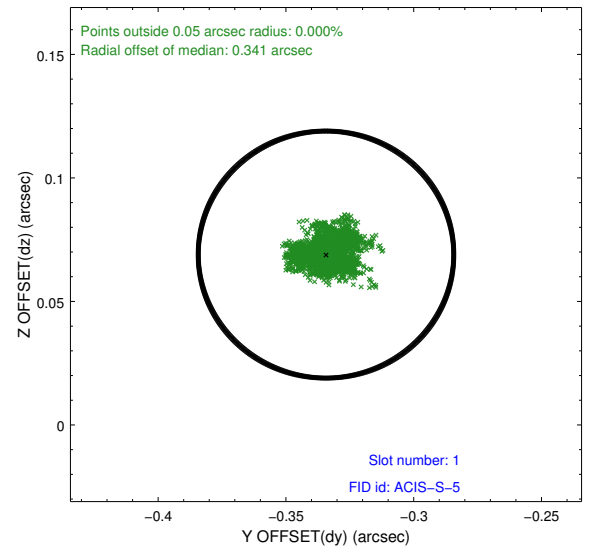
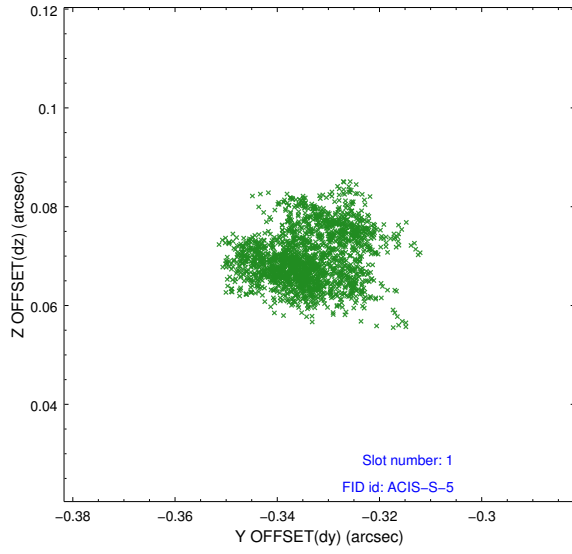


2.5 FID Slots

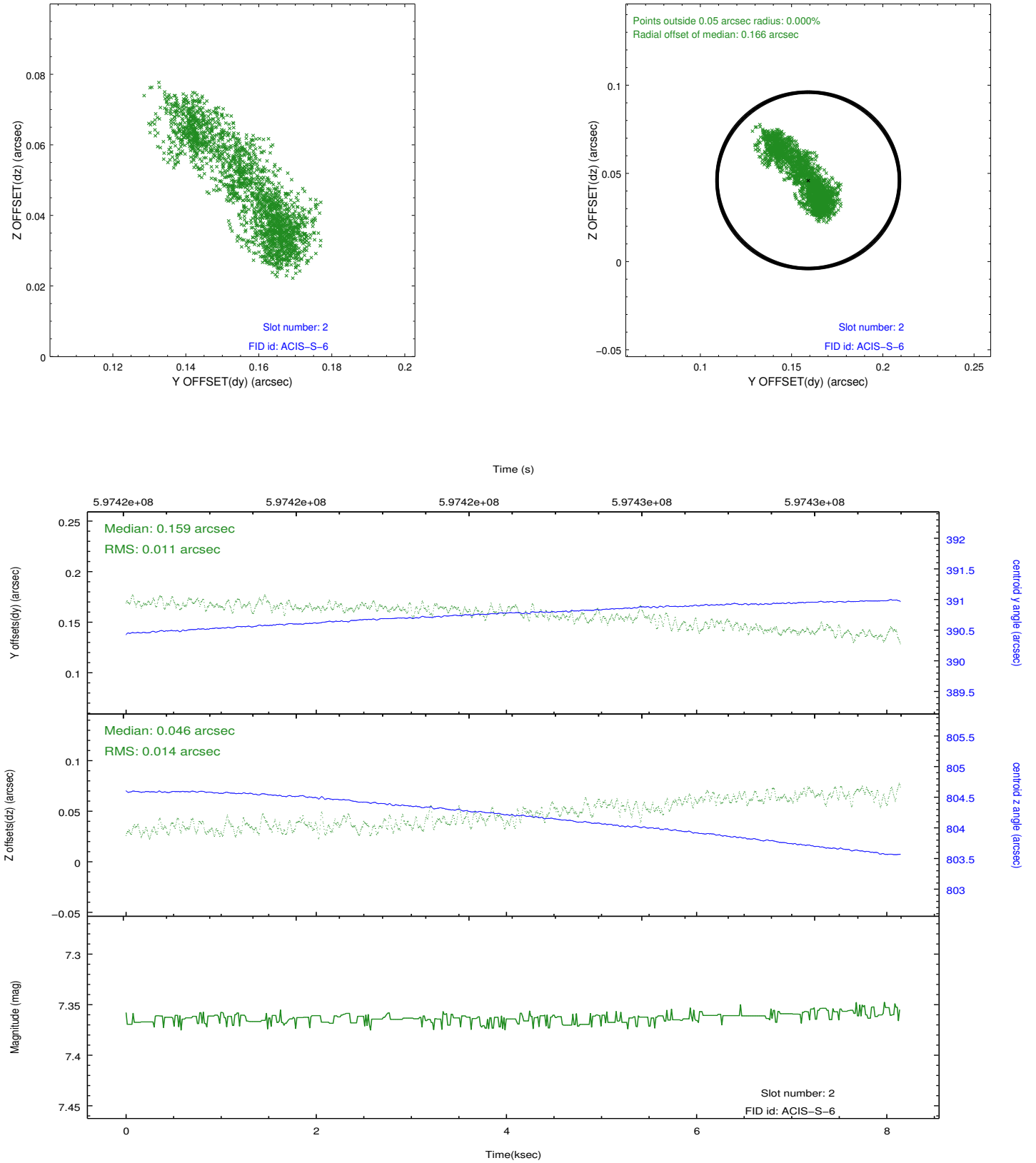
2.5.1 Slot 0



2.5.2 Slot 1



2.5.3 Slot 2



A Summary

A.1 Status

V&V Scientist	Joy Nichols
V&V Date (YYYY-MM-DD)	2016.12.07
V&V Edition	1
V&V Disposition and Status	OK
V&V Charge Time	8.0564328391552

A.2 Comments