

V&V Reference Report

L2 ASCDS Version : 10.5.2

Observation 19404 - L2 Version 1
Chandra X-Ray Center

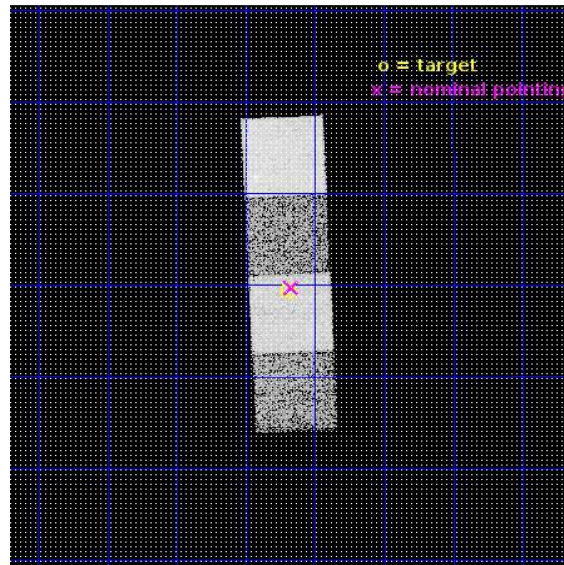
L2 Processing Date : Feb 12 2017

Contents

1	Front	2
2	OBI	3
2.1	OBI	3
2.1.1	Images	3
2.1.2	Bias	3
2.1.3	Parameters	4
2.1.4	Events	4
2.2	Compared Parameters	5
2.3	Aspect	6
2.4	Star Slots	9
2.4.1	Slot 3	9
2.4.2	Slot 4	10
2.4.3	Slot 5	11
2.4.4	Slot 6	12
2.4.5	Slot 7	13
2.5	FID Slots	14
2.5.1	Slot 0	14
2.5.2	Slot 1	15
2.5.3	Slot 2	16
A	Summary	17
A.1	Status	17
A.2	Comments	17

1 Front

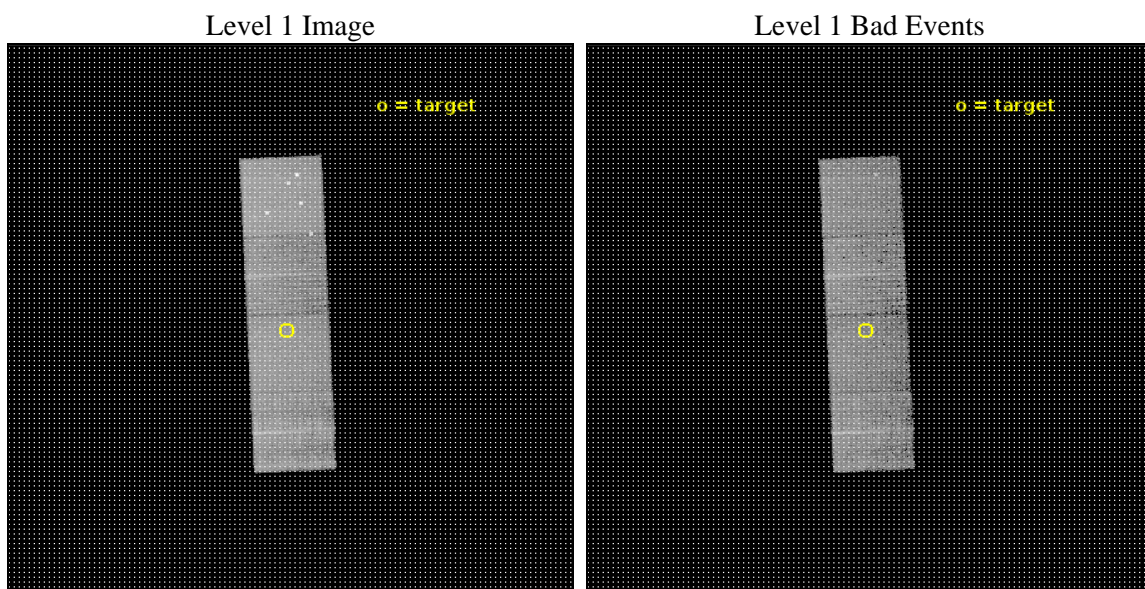
seq_num	601361	Sequence number
obs_id	19404	Observation id
title	Spiral galaxies of the Virgo cluster	Proposal title
observer	Roberto Soria	Principal investigator
object	NGC 4237	Source name
dtcycle	0	
cycle	P	events from which exps? Prim/Second/Both
ra_targ	184.2975	Observer's specified target RA [deg]
dec_targ	15.323972	Observer's specified target Dec [deg]
ra_nom	184.29282118917	Nominal RA [deg]
dec_nom	15.328871981273	Nominal Dec [deg]
roll_nom	87.368893453607	Nominal Roll [deg]
revision	1	Processing version of data
ontime	8060.000062108	Sum of GTIs [s]
livetime	7954.6902276109	Livetime [s]
ontime5	8060.000062108	Sum of GTIs [s]
ontime6	8060.000062108	Sum of GTIs [s]
ontime7	8060.000062108	Sum of GTIs [s]
ontime8	8060.000062108	Sum of GTIs [s]
l2events	84707	Number of level 2 events



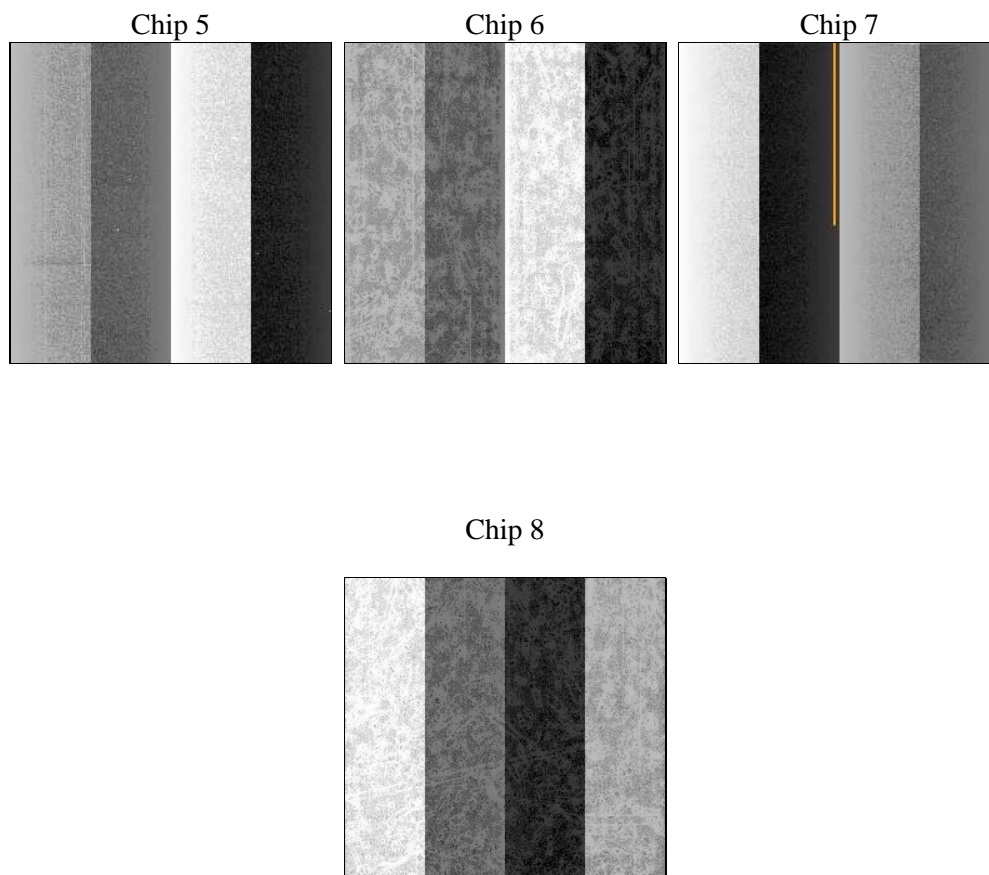
2 OBI

2.1 OBI

2.1.1 Images



2.1.2 Bias



2.1.3 Parameters

obi_num	0	Obi number	sched_exp_time	8000.000000	[s] Scheduled observation exposure time
ascdsver	10.5.2	Processing system revision	ontime	8060.000062108	Sum of GTIs [s]
caldsver	4.7.3	 	ontime5	8060.000062108	Sum of GTIs [s]
date	2017-02-12T14:08:58	Date and time of file creation	ontime6	8060.000062108	Sum of GTIs [s]
revision	1	Processing version of data	ontime7	8060.000062108	Sum of GTIs [s]
			ontime8	8060.000062108	Sum of GTIs [s]
			l1events	312169	Number of level 1 events

2.1.4 Events

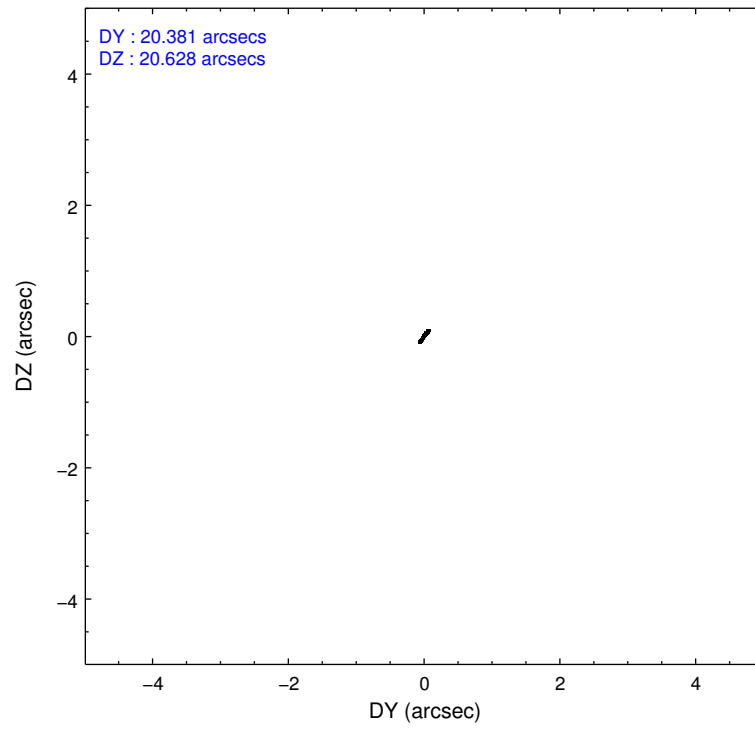
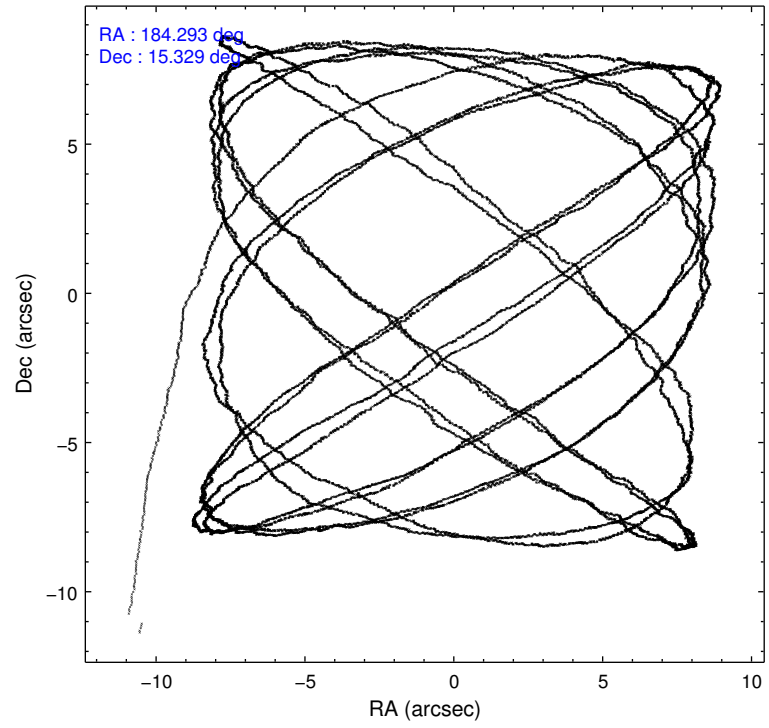
	ccd 5	ccd 6	ccd 7	ccd 8
level 1 events	101314	60659	75179	75017
rejected events	47250	54198	43185	54576
rejected %	46%	89%	57%	72%

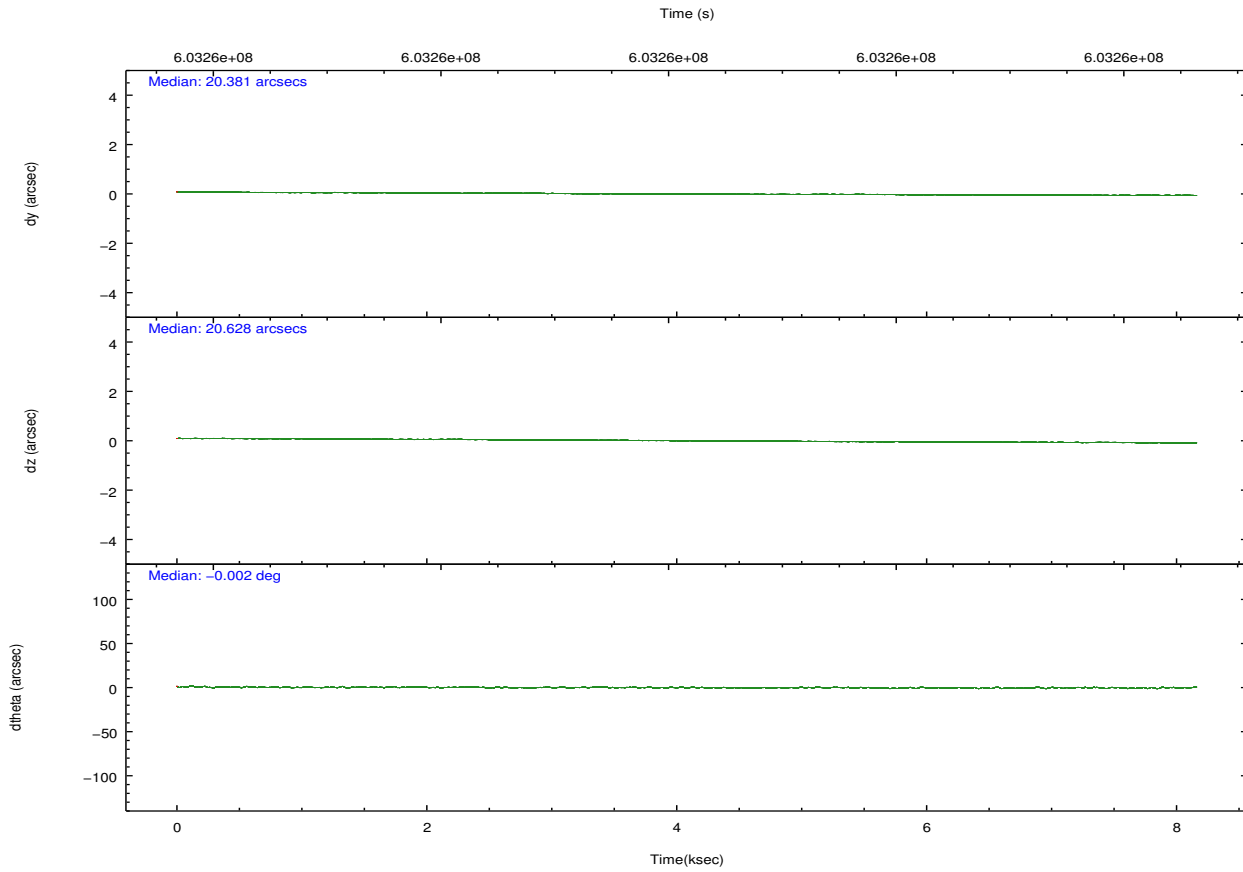
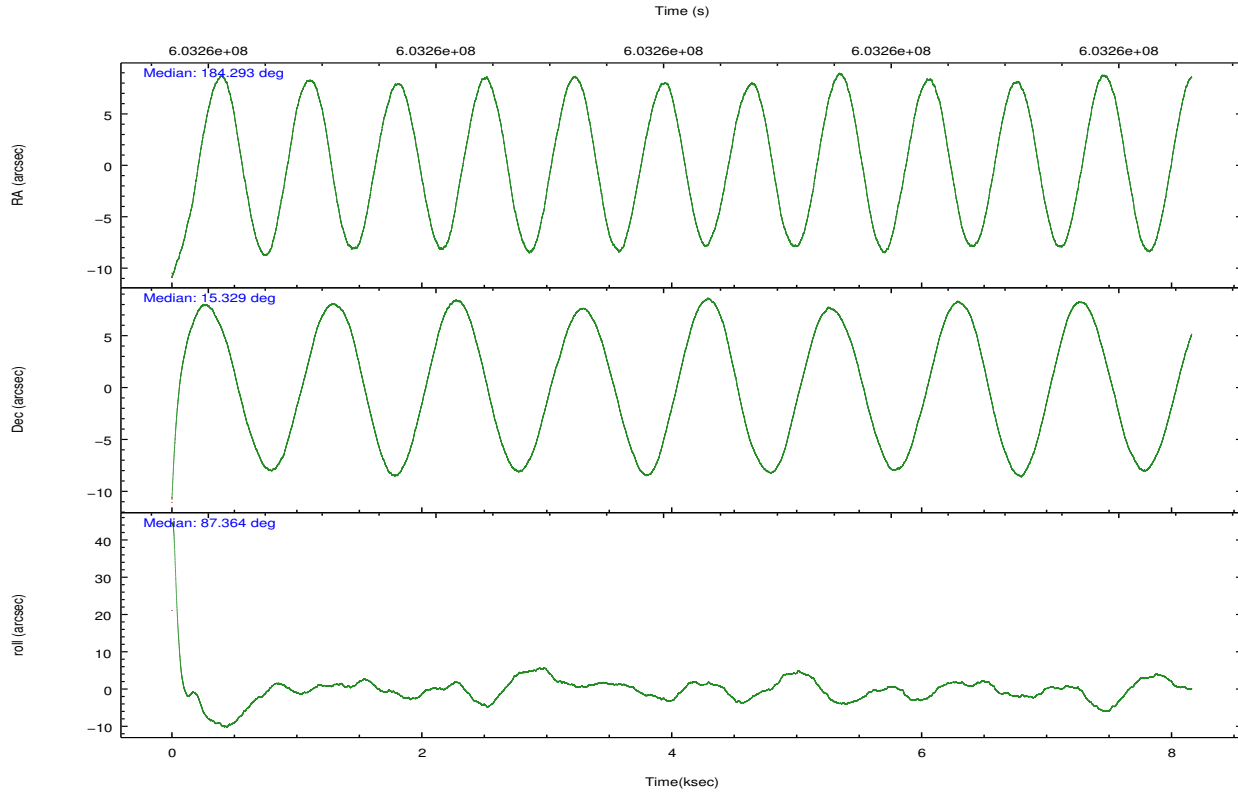
	ccd 5	ccd 6	ccd 7	ccd 8
grade 0 events	10749	2137	2490	5713
	10%	3%	3%	7%
grade 1 events	611	32	96	74
	0%	0%	0%	0%
grade 2 events	15757	1465	6942	4950
	15%	2%	9%	6%
grade 3 events	1706	609	2394	2214
	1%	1%	3%	2%
grade 4 events	1490	642	2440	2040
	1%	1%	3%	2%
grade 5 events	6205	2702	7151	3941
	6%	4%	9%	5%
grade 6 events	24379	1613	17758	5539
	24%	2%	23%	7%
grade 7 events	40417	51459	35908	50546
	39%	84%	47%	67%

2.2 Compared Parameters

Parameter	Planned	Actual	Parameter	Planned	Actual
Instrument	ACIS	ACIS	Obspar format version number	7	7
Detector	ACIS-5678	ACIS-5678	Obspar file type	PREDICTED	ACTUAL
Grating	NONE	NONE	Obspar update status	NONE	UPDATED
Data mode	VFAINT	VFAINT	Number of optional ACIS chips dropped	0	0
Observation mode	POINTING	POINTING	On-chip summing requested	N	N
[deg] Pointing RA	184.306276	184.29282118917	Subarray requested	NONE	NONE
[deg] Pointing Dec	15.304666	15.32887198127331	Alternating exposures requested	N	N
[deg] Pointing Roll	87.208641	87.36889345360711	[s] Primary exposure time	0.000000	3.1
[mm] SIM focus pos	-0.684267	-0.6828225247311905			
[mm] SIM defocus	0	0.001444936568705701			
[mm] SIM translation stage pos	-190.132523	-190.1425803651734			
[mm] SIM translation stage offset	0	0.01005778216563158			
[s] Observation start time (MET)	603256224.184000	603254764.36156			
Observation start date	2017-02-12T03:09:15	2017-02-12T02:46:04			
[s] Observation end time (MET)	603264224.184000	603265230.12467			
Observation end date	2017-02-12T05:22:35	2017-02-12T05:40:30			
Read mode	TIMED	TIMED			

2.3 Aspect



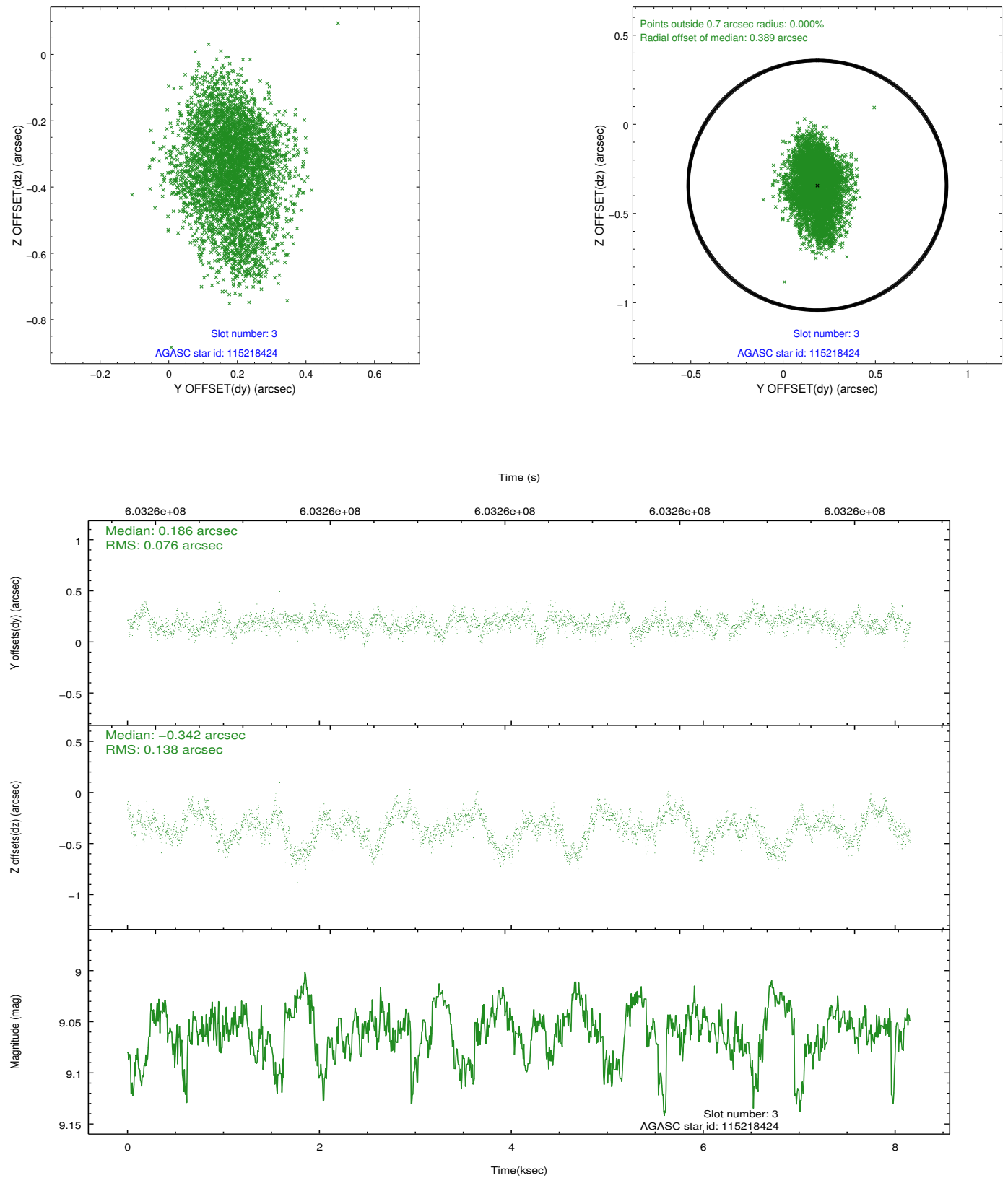


Slot Statistics

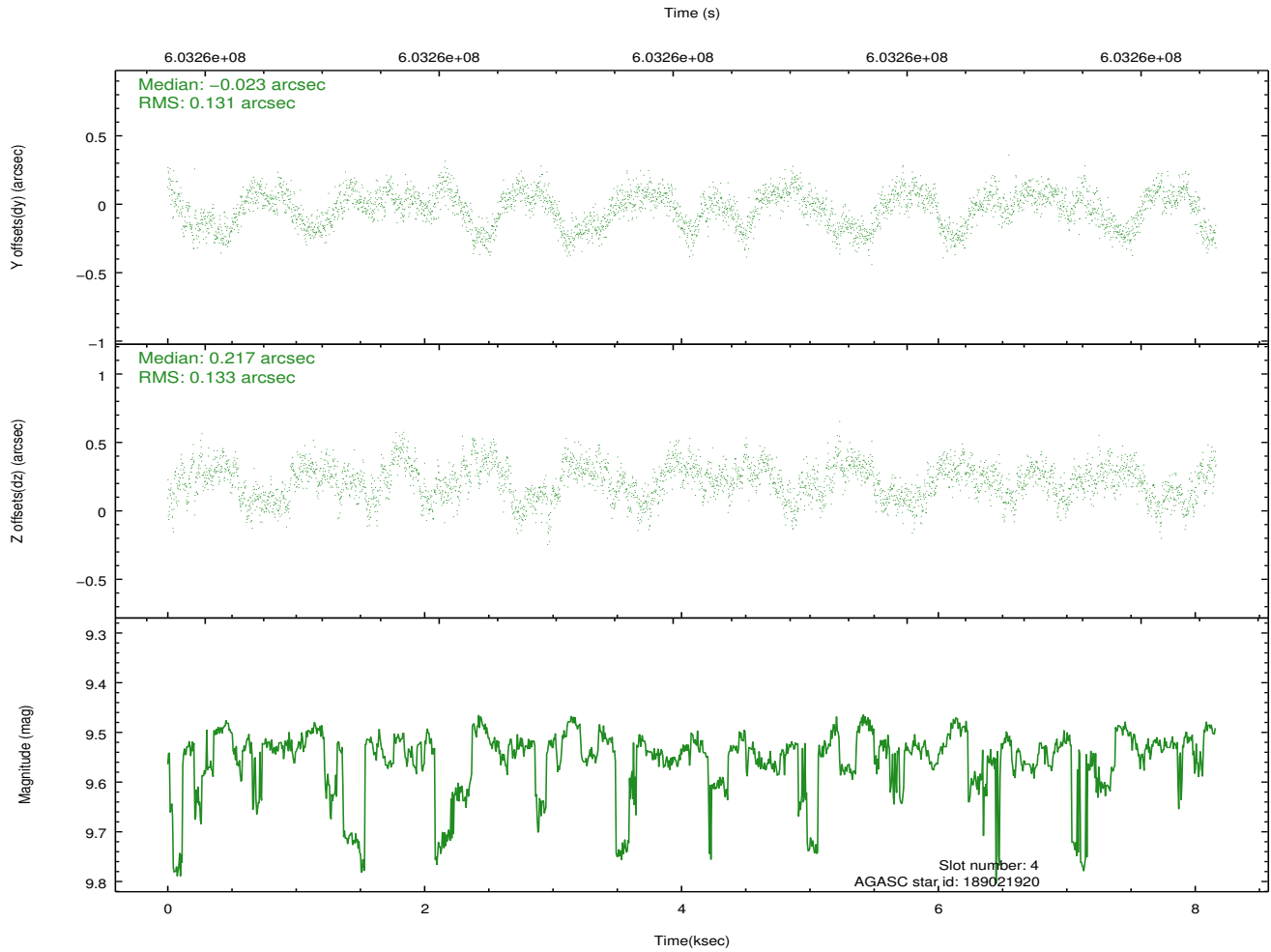
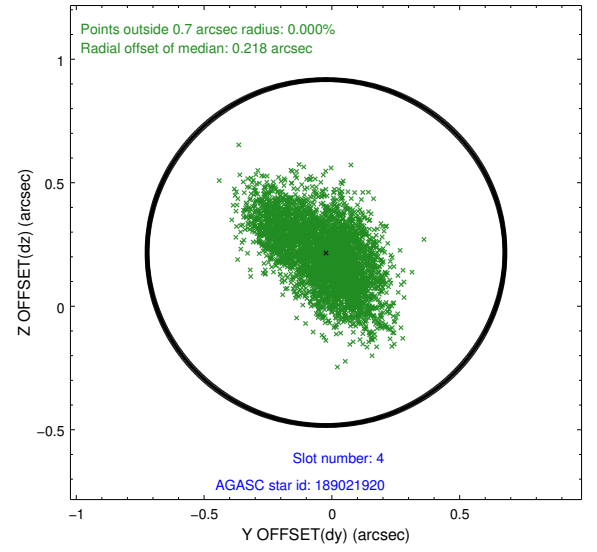
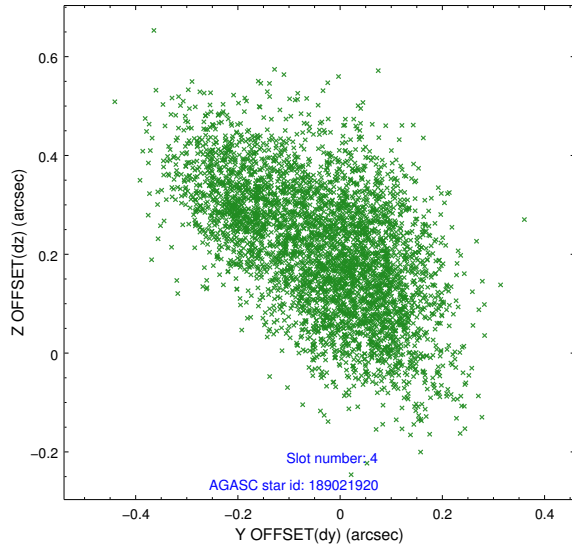
slot	status	used	id	mag	n_pts	med_dy	med_dz	dr1	dr2	ra	dec	mean_y	mean_z
0	FID		ACIS-S-2	7.05	1991	-0.328	-0.216	0.007	0.012	0.000000	0.000000	-773.89	-1742.30
1	FID		ACIS-S-4	7.17	1991	0.349	0.195	0.007	0.012	0.000000	0.000000	2139.82	165.78
2	FID		ACIS-S-6	7.29	1991	-0.049	0.029	0.007	0.012	0.000000	0.000000	389.34	803.85
3	GUIDE	used	115218424	9.06	3980	0.186	-0.342	0.166	0.280	184.237137	14.820527	-1752.46	155.64
4	GUIDE	used	189021920	9.54	3976	-0.023	0.217	0.199	0.326	183.990218	15.042765	-994.48	1052.10
5	GUIDE	used	189402424	9.60	3976	-0.454	-0.074	0.200	0.311	184.730884	15.884912	2159.45	-1366.09
6	GUIDE	used	189416408	8.46	3981	0.240	0.111	0.105	0.169	184.461757	15.019223	-998.50	-587.77
7	GUIDE	used	189400120	8.18	3978	0.071	0.112	0.124	0.224	185.025387	15.714800	1599.77	-2415.50

2.4 Star Slots

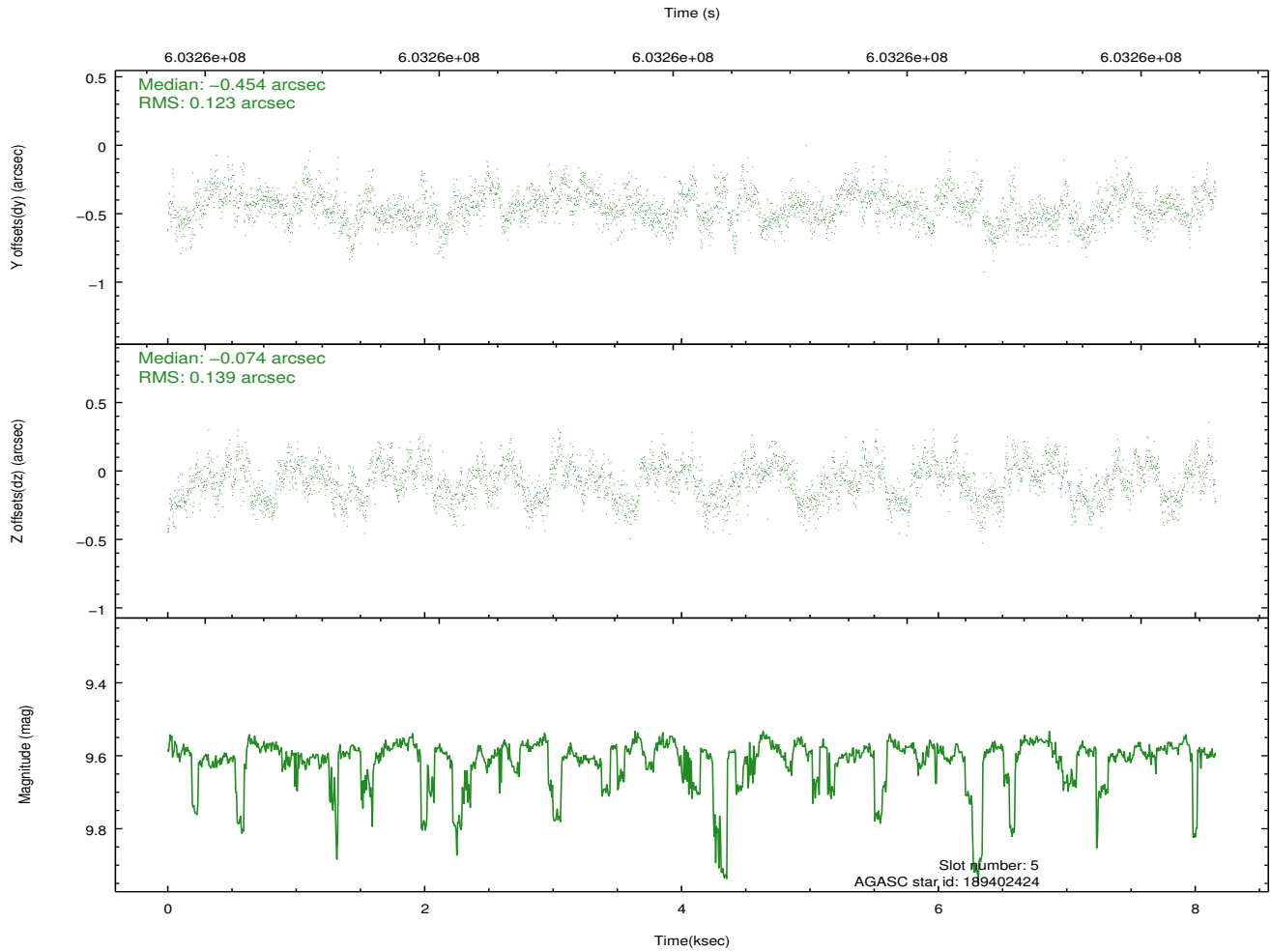
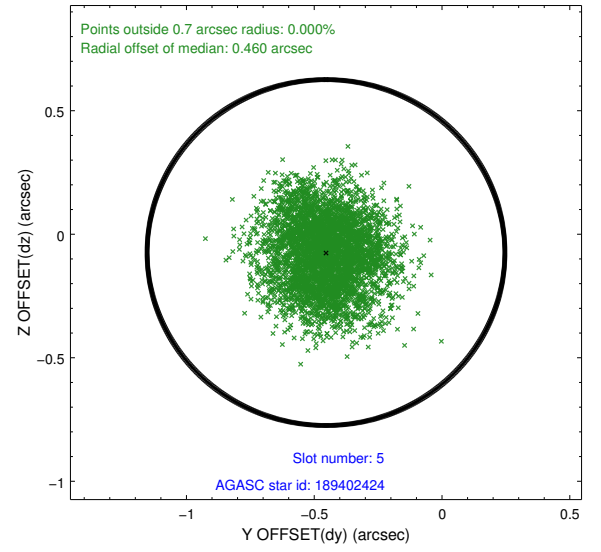
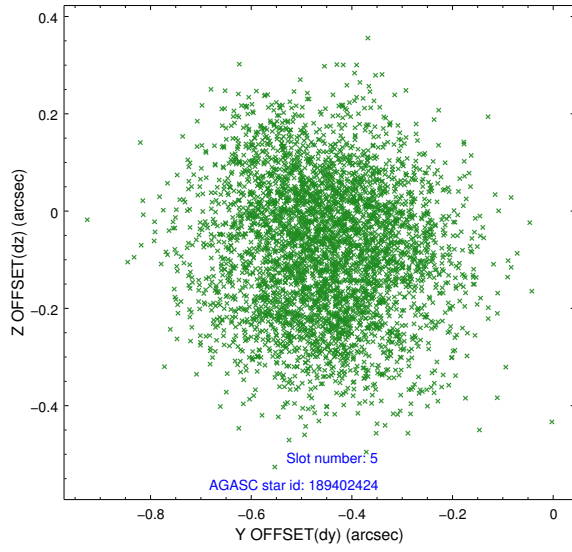
2.4.1 Slot 3



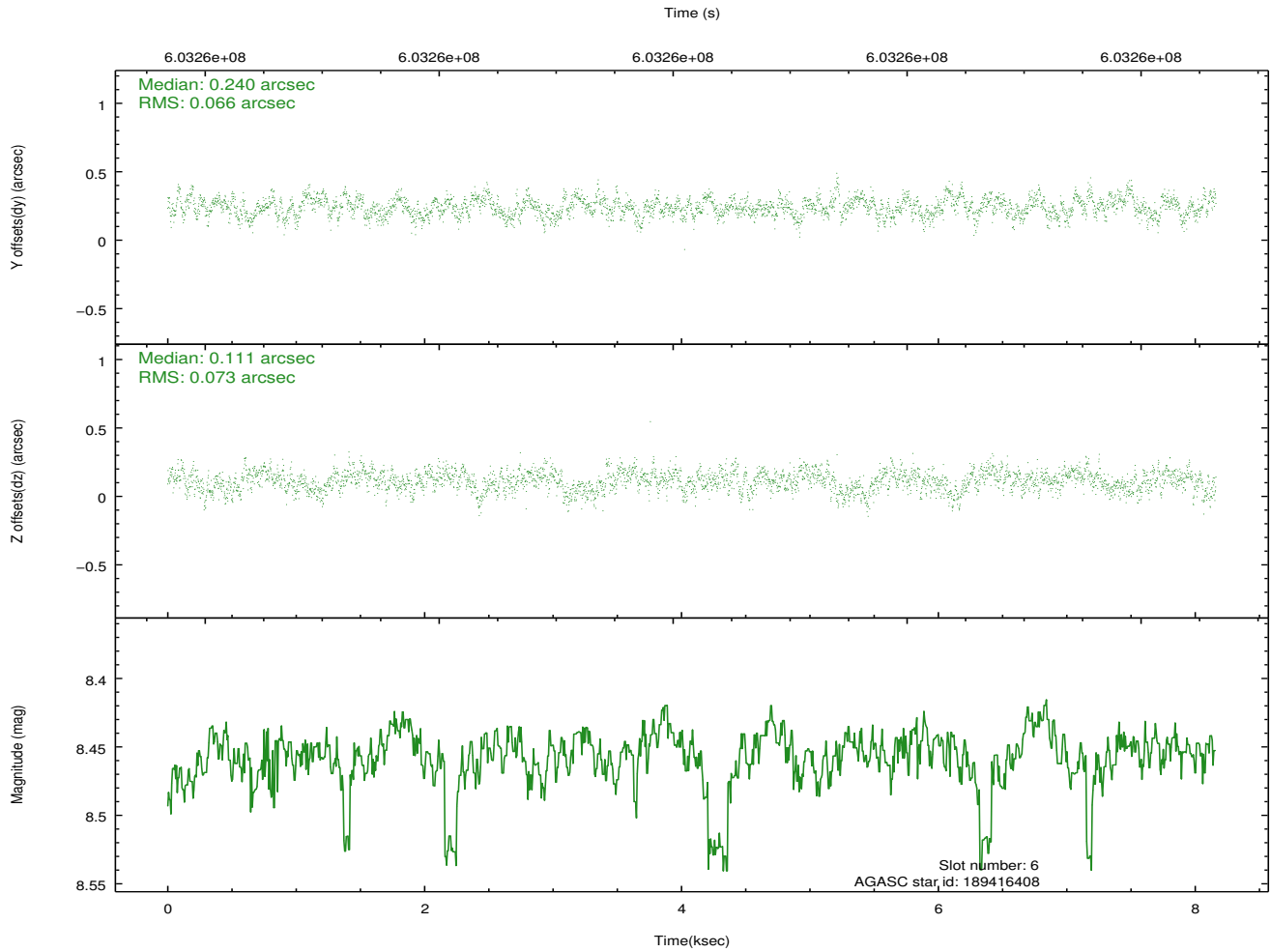
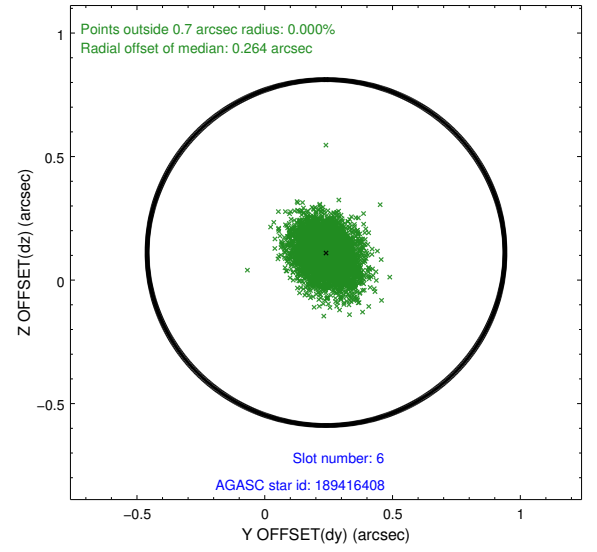
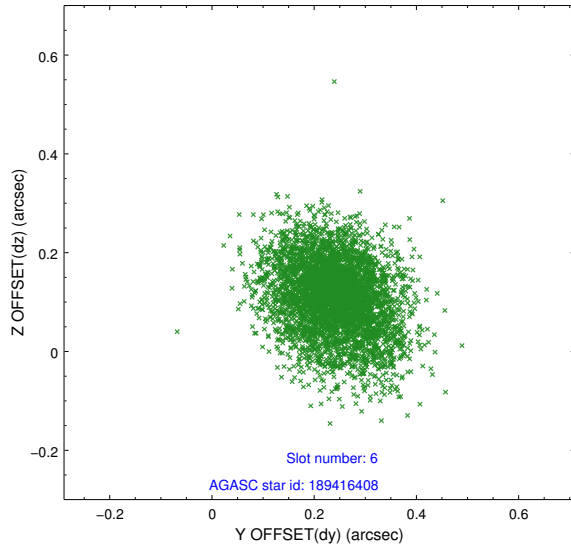
2.4.2 Slot 4



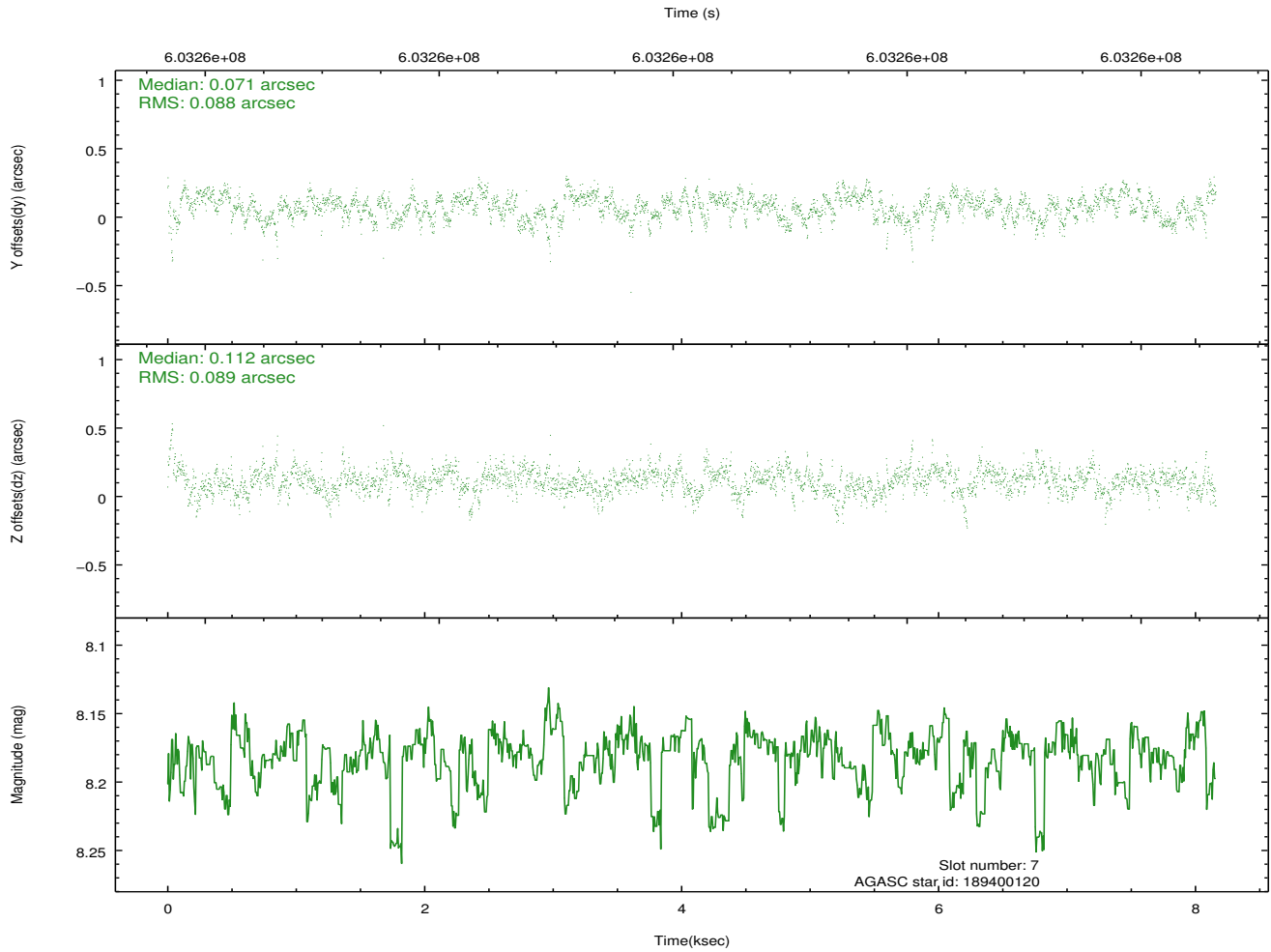
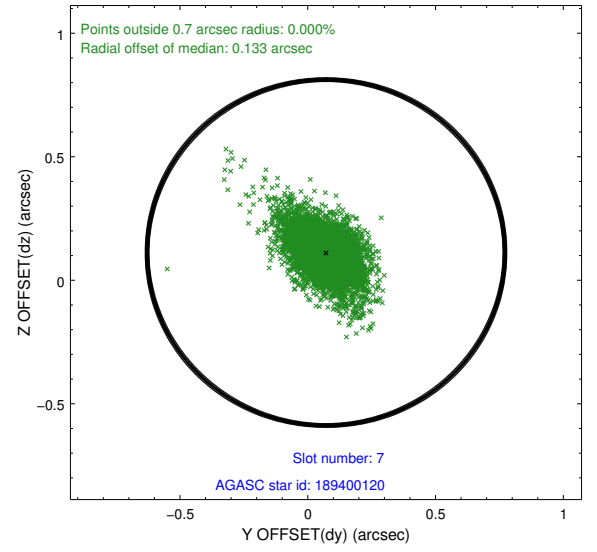
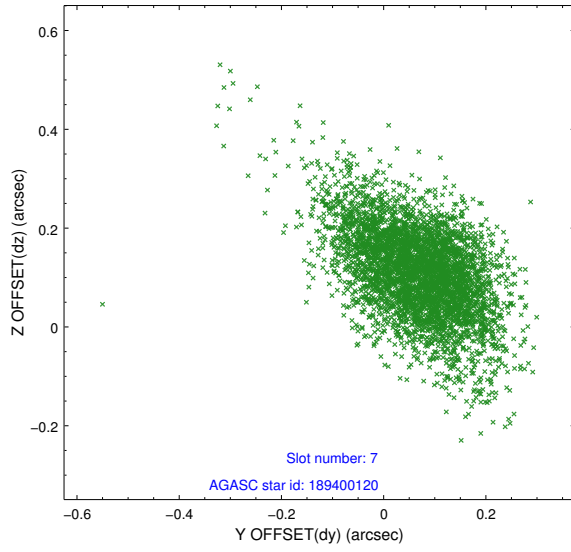
2.4.3 Slot 5



2.4.4 Slot 6

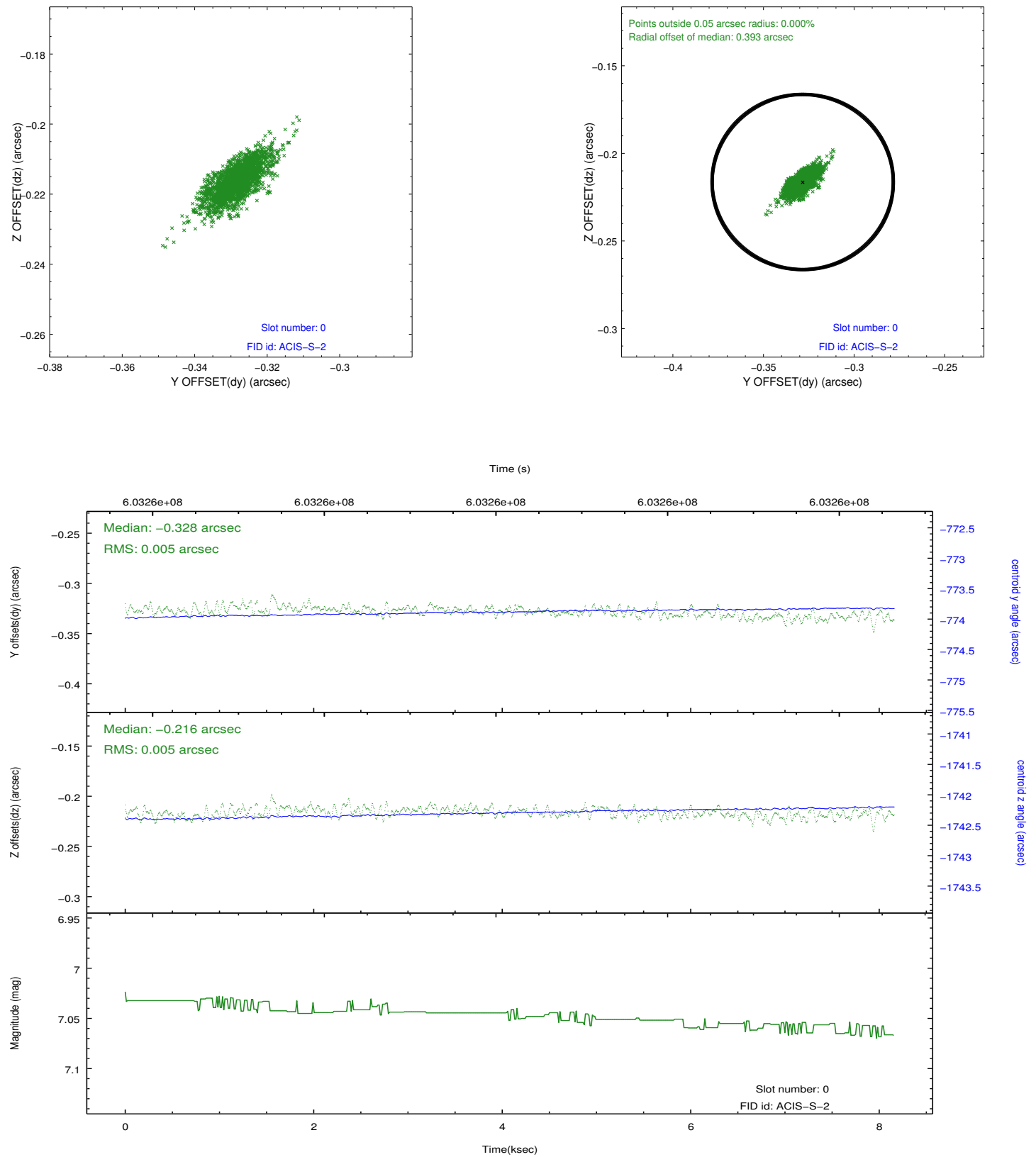


2.4.5 Slot 7

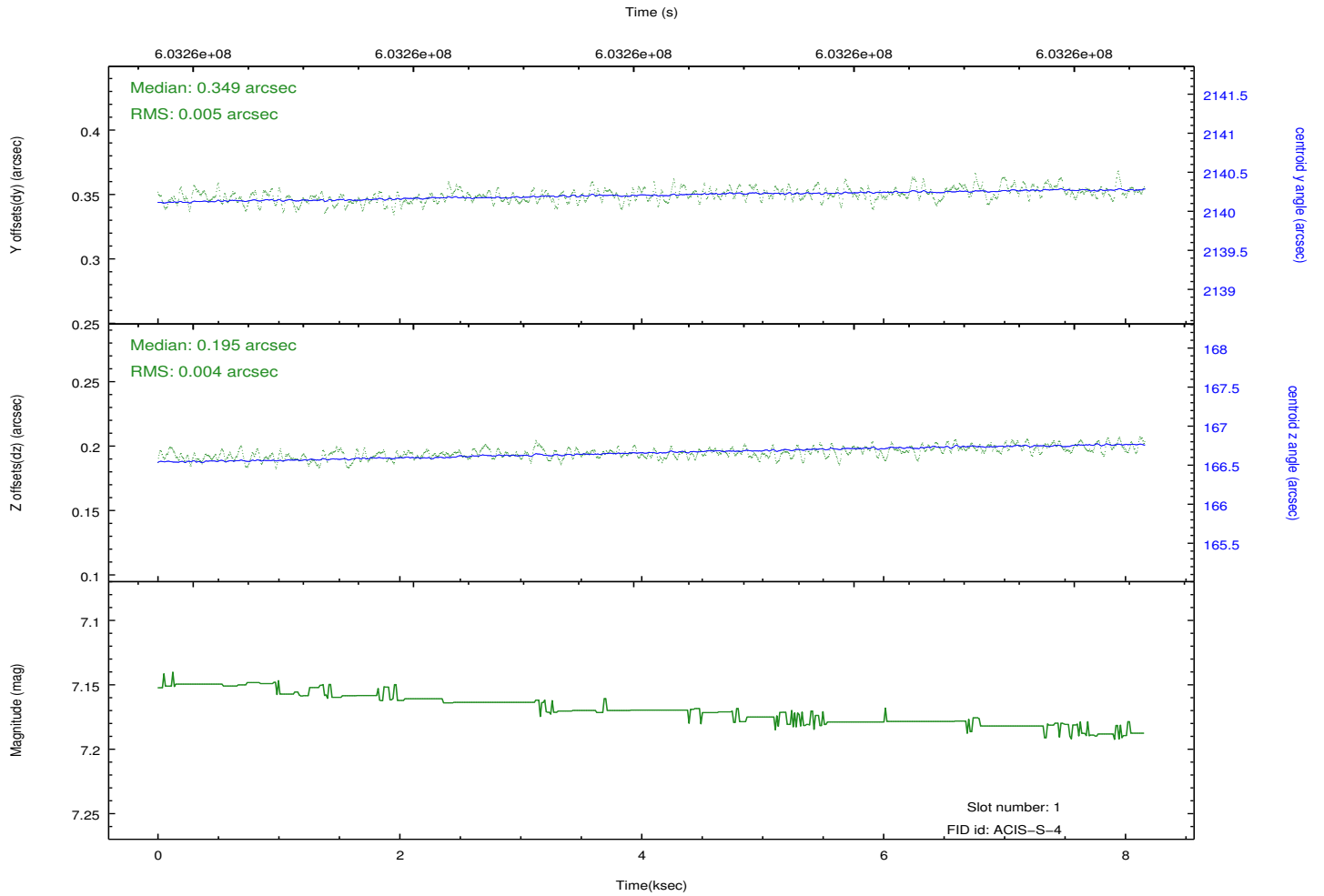
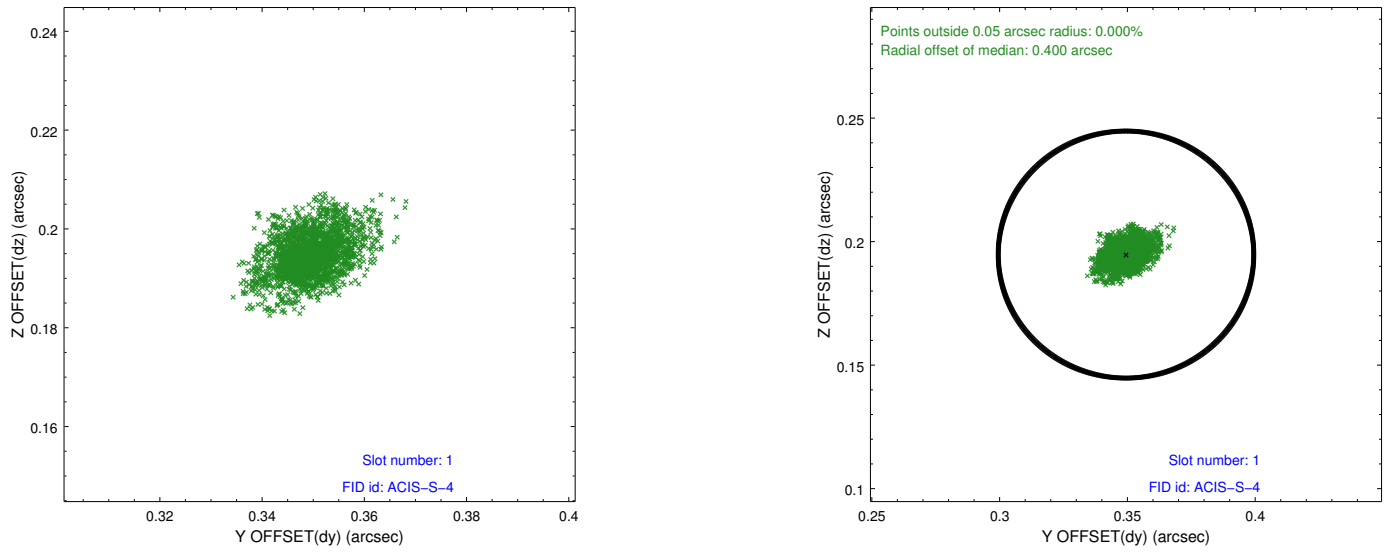


2.5 FID Slots

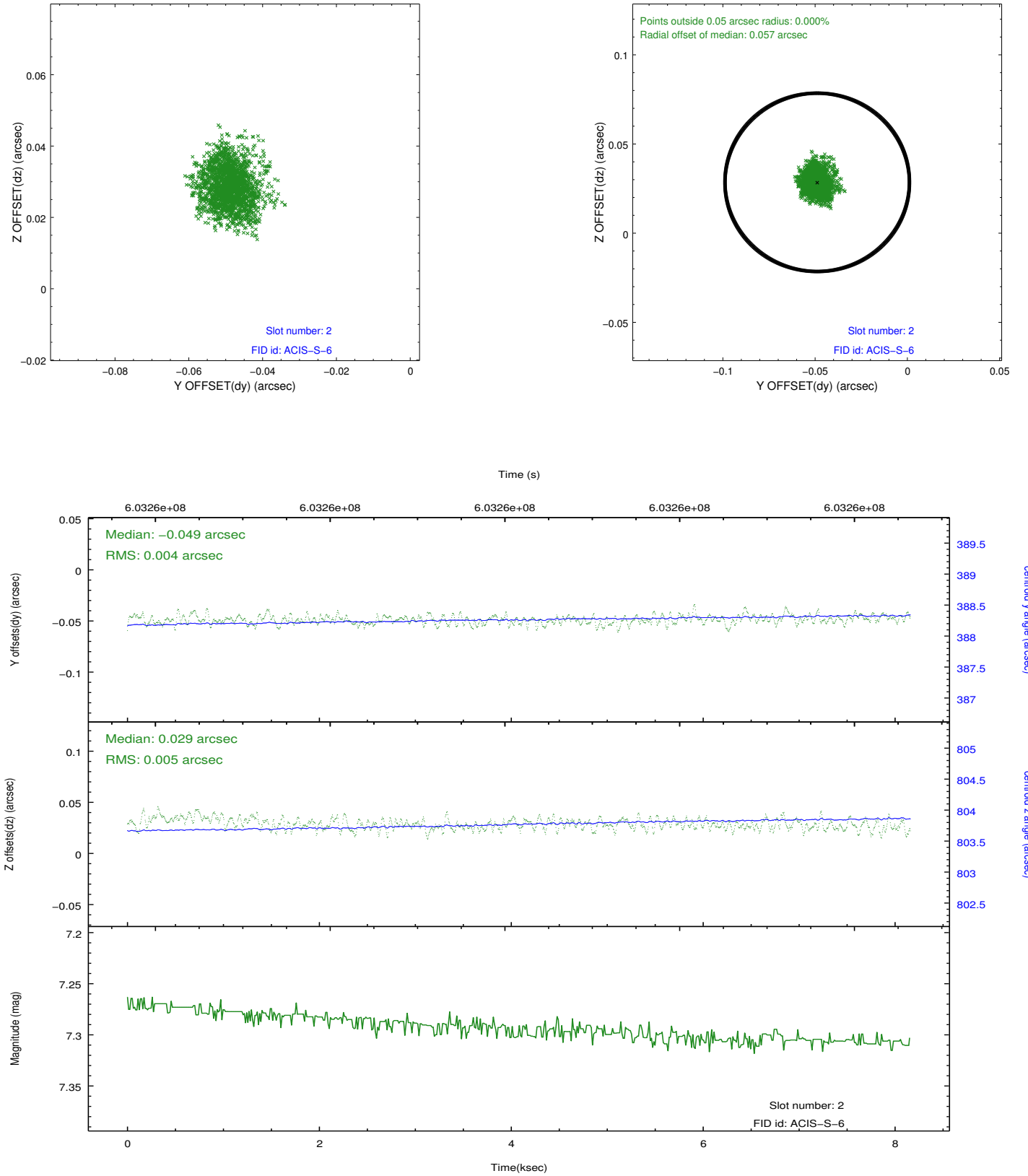
2.5.1 Slot 0



2.5.2 Slot 1



2.5.3 Slot 2



A Summary

A.1 Status

V&V Scientist	Beth Sundheim
V&V Date (YYYY-MM-DD)	2017.02.12
V&V Edition	1
V&V Disposition and Status	OK
V&V Charge Time	8.060000062108

A.2 Comments