

V&V Reference Report

L2 ASCDS Version : 10.5.2

Observation 19394 - L2 Version 1
Chandra X-Ray Center

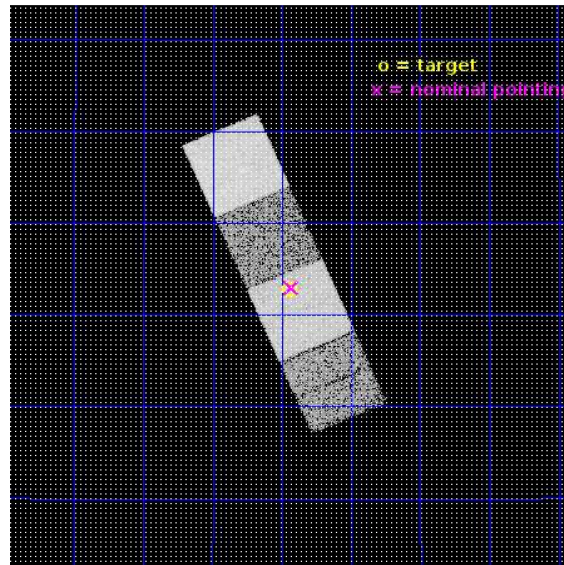
L2 Processing Date : Dec 25 2016

Contents

1	Front	2
2	OBI	3
2.1	OBI	3
2.1.1	Images	3
2.1.2	Bias	3
2.1.3	Parameters	4
2.1.4	Events	4
2.2	Compared Parameters	5
2.3	Aspect	6
2.4	Star Slots	9
2.4.1	Slot 3	9
2.4.2	Slot 4	10
2.4.3	Slot 5	11
2.4.4	Slot 6	12
2.4.5	Slot 7	13
2.5	FID Slots	14
2.5.1	Slot 0	14
2.5.2	Slot 1	15
2.5.3	Slot 2	16
A	Summary	17
A.1	Status	17
A.2	Comments	17

1 Front

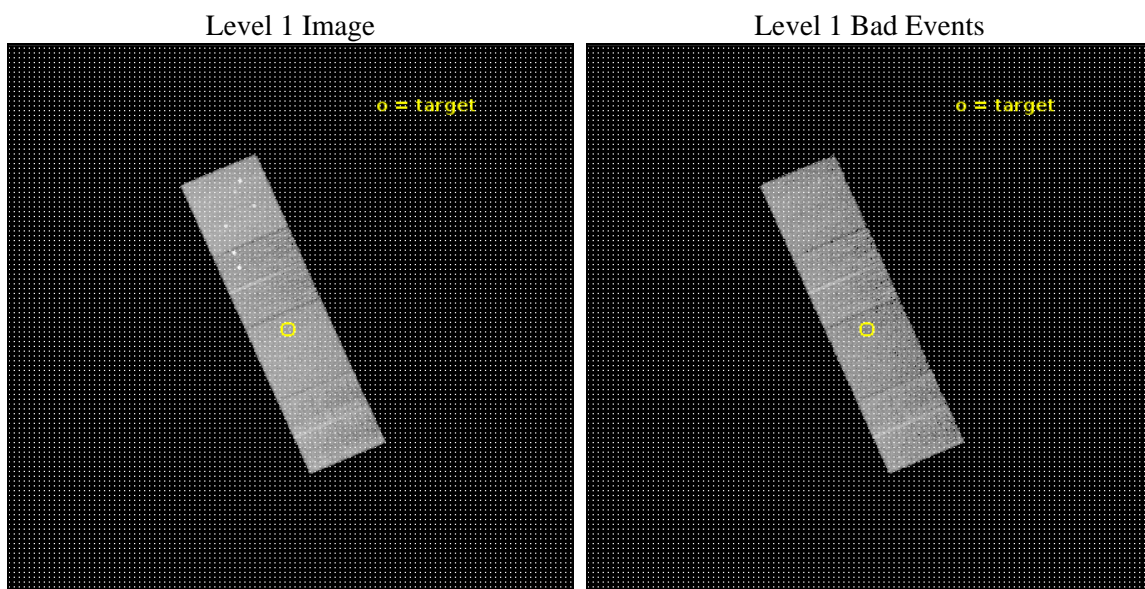
seq_num	601351	Sequence number
obs_id	19394	Observation id
title	Spiral galaxies of the Virgo cluster	Proposal title
observer	Roberto Soria	Principal investigator
object	NGC 4419	Source name
dtcycle	0	
cycle	P	events from which exps? Prim/Second/Both
ra_targ	186.735	Observer's specified target RA [deg]
dec_targ	15.047389	Observer's specified target Dec [deg]
ra_nom	186.73268198185	Nominal RA [deg]
dec_nom	15.049714654397	Nominal Dec [deg]
roll_nom	66.659649788638	Nominal Roll [deg]
revision	1	Processing version of data
ontime	10062.144500613	Sum of GTIs [s]
livetime	9930.6751750697	Livetime [s]
ontime5	10062.10346067	Sum of GTIs [s]
ontime6	10062.062420607	Sum of GTIs [s]
ontime7	10062.144500613	Sum of GTIs [s]
ontime8	10062.021380663	Sum of GTIs [s]
l2events	99788	Number of level 2 events



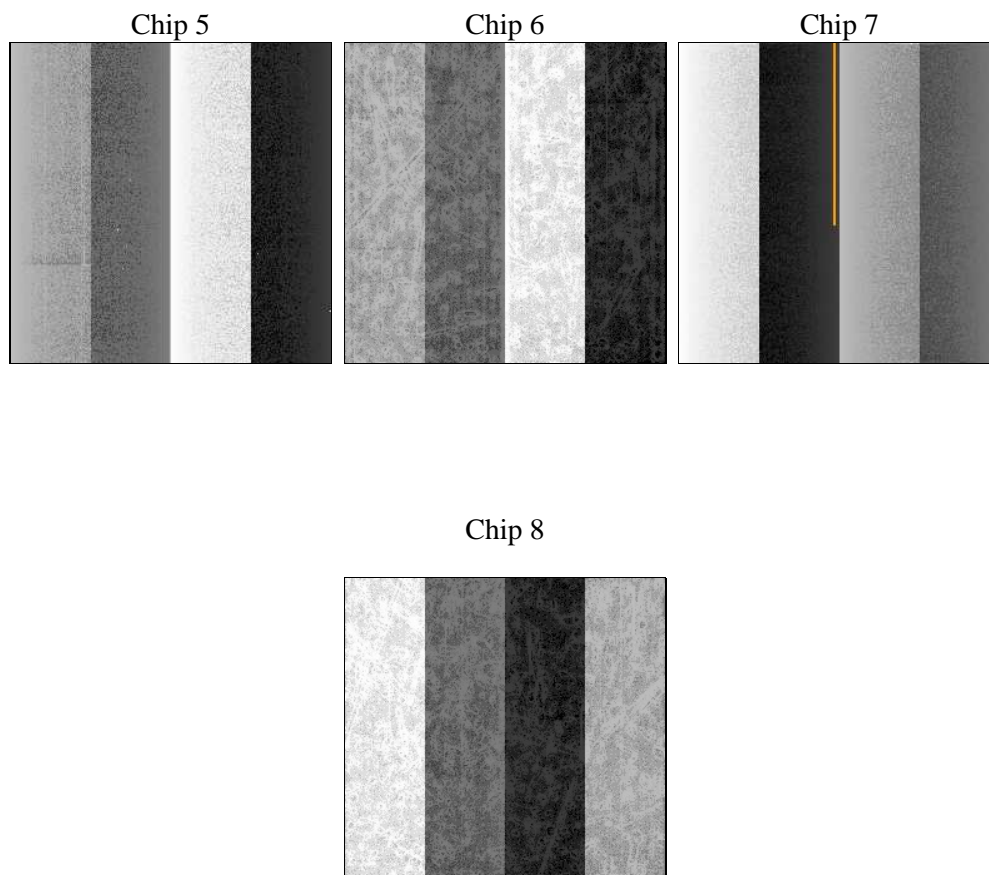
2 OBI

2.1 OBI

2.1.1 Images



2.1.2 Bias



2.1.3 Parameters

obi_num	0	Obi number	sched_exp_time	10000.000000	[s] Scheduled observation exposure time
ascdsver	10.5.2	Processing system revision	ontime	10062.144500613	Sum of GTIs [s]
caldbver	4.7.3	 	ontime5	10062.10346067	Sum of GTIs [s]
date	2016-12-25T14:34:54	Date and time of file creation	ontime6	10062.062420607	Sum of GTIs [s]
revision	1	Processing version of data	ontime7	10062.144500613	Sum of GTIs [s]
			ontime8	10062.021380663	Sum of GTIs [s]
			l1events	356428	Number of level 1 events

2.1.4 Events

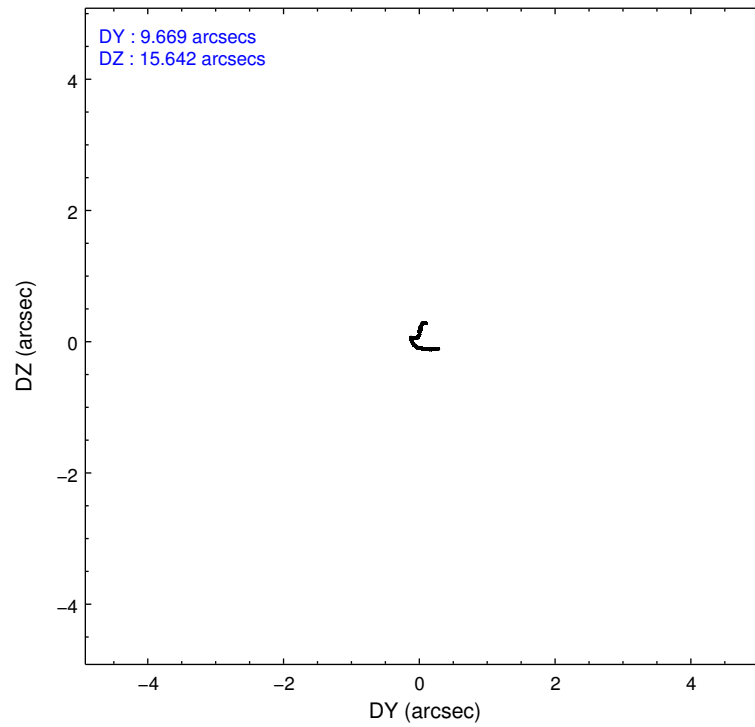
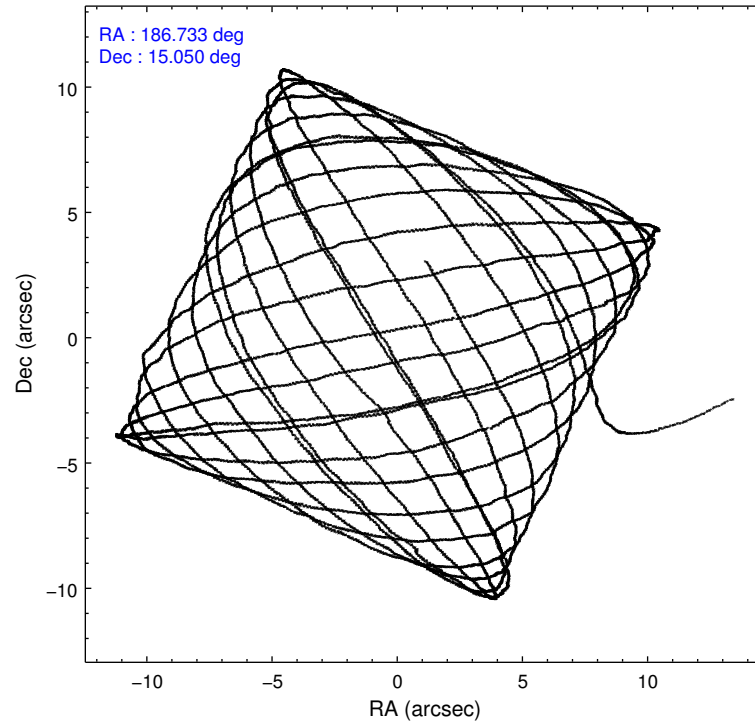
	ccd 5	ccd 6	ccd 7	ccd 8
level 1 events	110208	73568	87280	85372
rejected events	55695	59792	49344	63042
rejected %	50%	81%	56%	73%

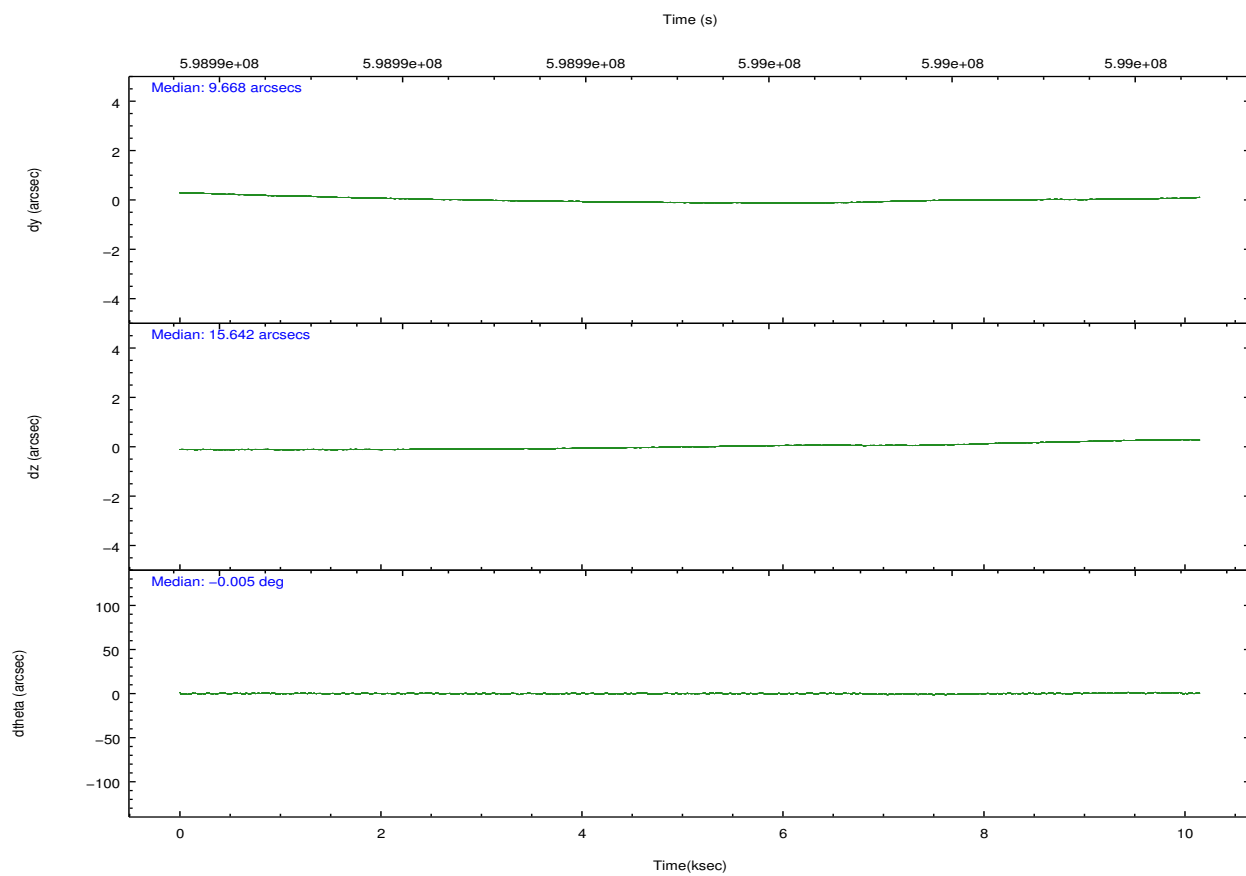
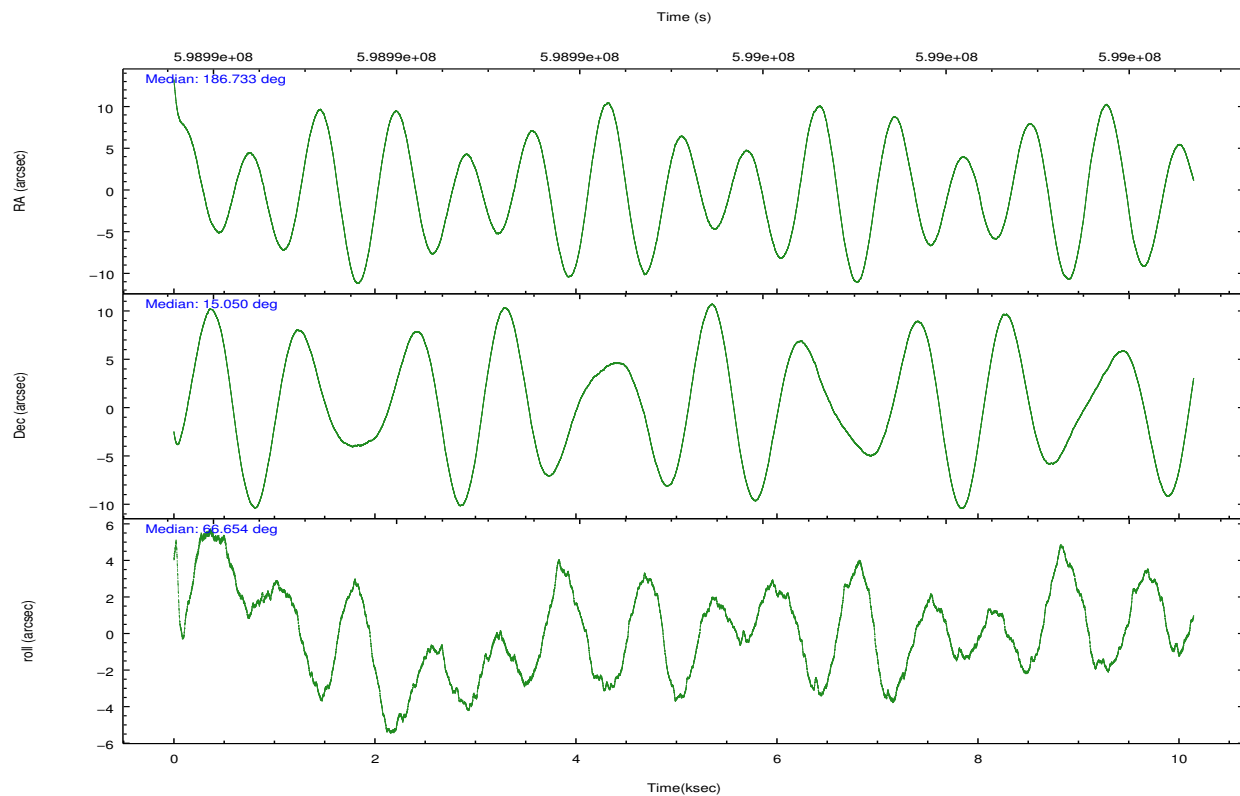
	ccd 5	ccd 6	ccd 7	ccd 8
grade 0 events	6631	5671	3273	6461
	6%	7%	3%	7%
grade 1 events	278	53	112	63
	0%	0%	0%	0%
grade 2 events	16426	4857	8183	5449
	14%	6%	9%	6%
grade 3 events	1482	728	2905	2222
	1%	0%	3%	2%
grade 4 events	1437	687	2868	2131
	1%	0%	3%	2%
grade 5 events	7068	3031	8420	4645
	6%	4%	9%	5%
grade 6 events	28564	1841	20726	6078
	25%	2%	23%	7%
grade 7 events	48322	56700	40793	58323
	43%	77%	46%	68%

2.2 Compared Parameters

Parameter	Planned	Actual	Parameter	Planned	Actual
Instrument	ACIS	ACIS	Obspar format version number	7	7
Detector	ACIS-5678	ACIS-5678	Obspar file type	PREDICTED	ACTUAL
Grating	NONE	NONE	Obspar update status	NONE	UPDATED
Data mode	VFAINT	VFAINT	Number of optional ACIS chips dropped	0	0
Observation mode	POINTING	POINTING	On-chip summing requested	N	N
[deg] Pointing RA	186.736306	186.7326819818541	Subarray requested	NONE	NONE
[deg] Pointing Dec	15.022515	15.04971465439666	Alternating exposures requested	N	N
[deg] Pointing Roll	66.502076	66.65964978863782	[s] Primary exposure time	0.000000	3.1
[mm] SIM focus pos	-0.684267	-0.6828225247311905			
[mm] SIM defocus	0	0.001444936568705701			
[mm] SIM translation stage pos	-190.132523	-190.1400660498719			
[mm] SIM translation stage offset	0	0.00754346686406393			
[s] Observation start time (MET)	598990211.184000	598989225.58963			
Observation start date	2016-12-24T18:09:03	2016-12-24T17:53:45			
[s] Observation end time (MET)	599000211.184000	599000993.61531			
Observation end date	2016-12-24T20:55:43	2016-12-24T21:09:53			
Read mode	TIMED	TIMED			

2.3 Aspect



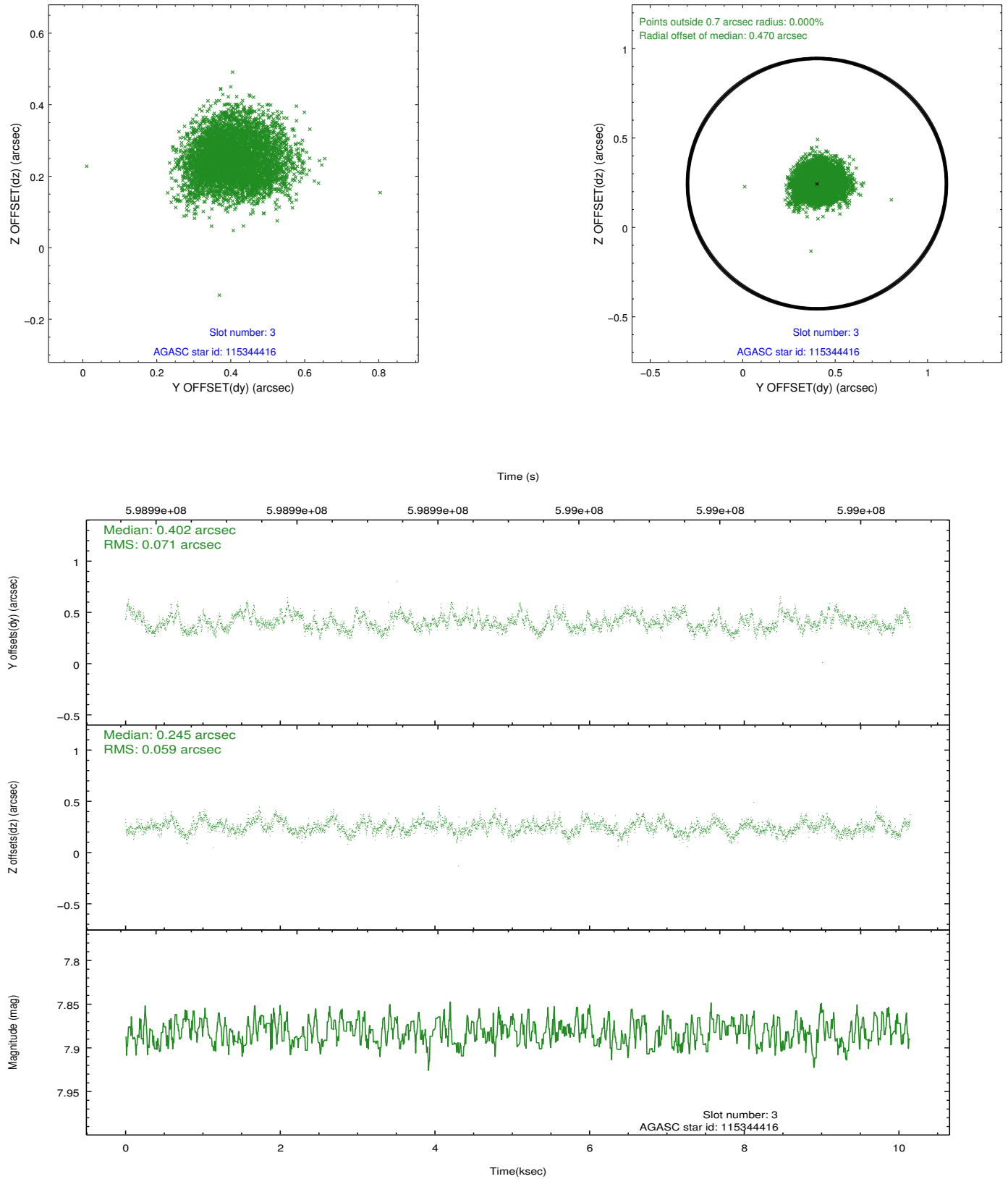


Slot Statistics

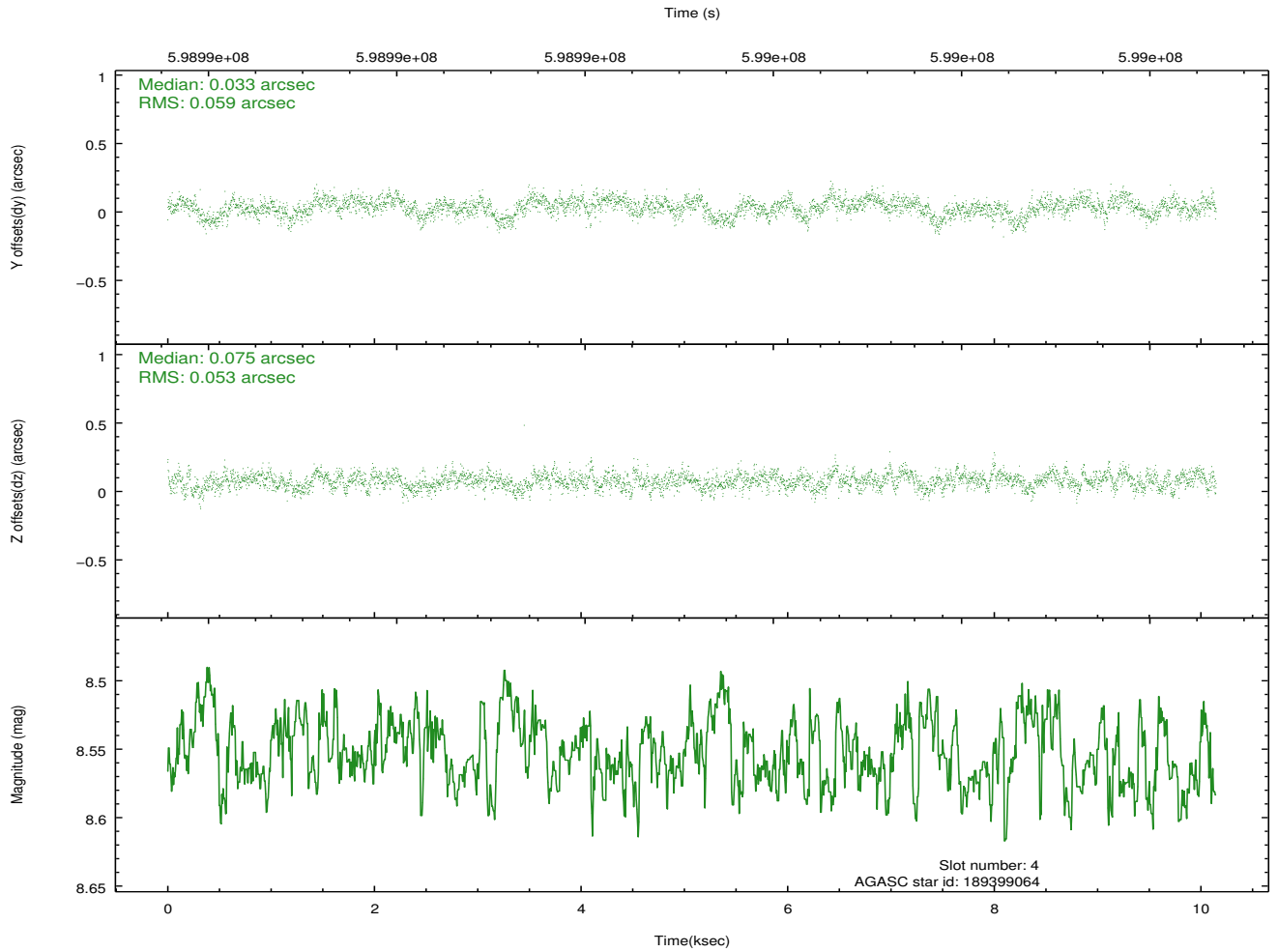
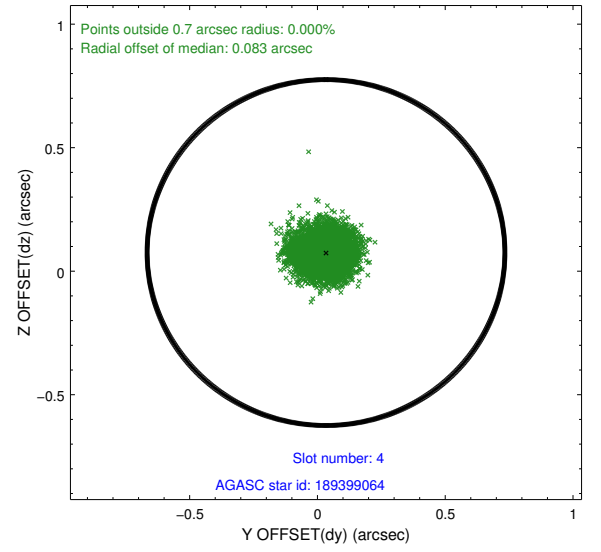
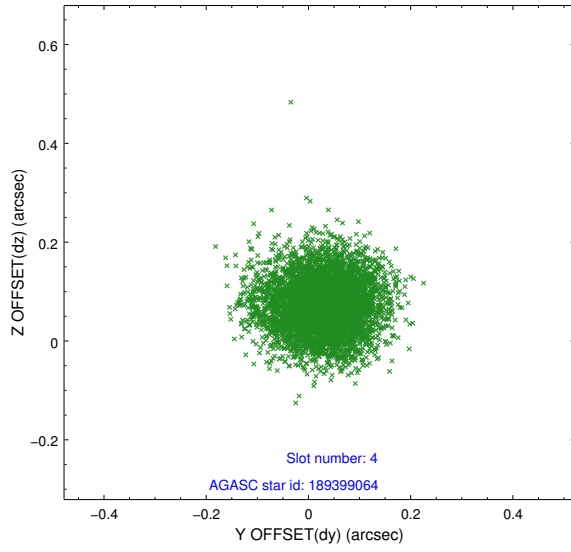
slot	status	used	id	mag	n_pts	med_dy	med_dz	dr1	dr2	ra	dec	mean_y	mean_z
0	FID		ACIS-S-2	7.06	2475	-0.157	-0.042	0.007	0.012	0.000000	0.000000	-762.63	-1737.11
1	FID		ACIS-S-4	7.19	2475	0.386	0.087	0.007	0.013	0.000000	0.000000	2150.92	171.00
2	FID		ACIS-S-5	7.18	2476	-0.259	-0.036	0.007	0.012	0.000000	0.000000	-1814.93	165.09
3	GUIDE	used	115344416	7.88	4951	0.402	0.245	0.099	0.156	186.624628	14.572004	-1641.94	-288.77
4	GUIDE	used	189399064	8.55	4949	0.033	0.075	0.084	0.138	187.048930	15.252486	1193.08	-665.26
5	GUIDE	used	189402160	9.56	4947	-0.034	-0.459	0.151	0.248	186.723517	15.477538	1484.66	694.00
6	GUIDE	used	189402384	8.74	4948	0.025	-0.068	0.106	0.180	187.044872	15.618538	2395.84	-124.11
7	GUIDE	used	189419208	9.54	4939	-0.405	0.216	0.219	0.329	186.690349	15.761743	2377.34	1208.06

2.4 Star Slots

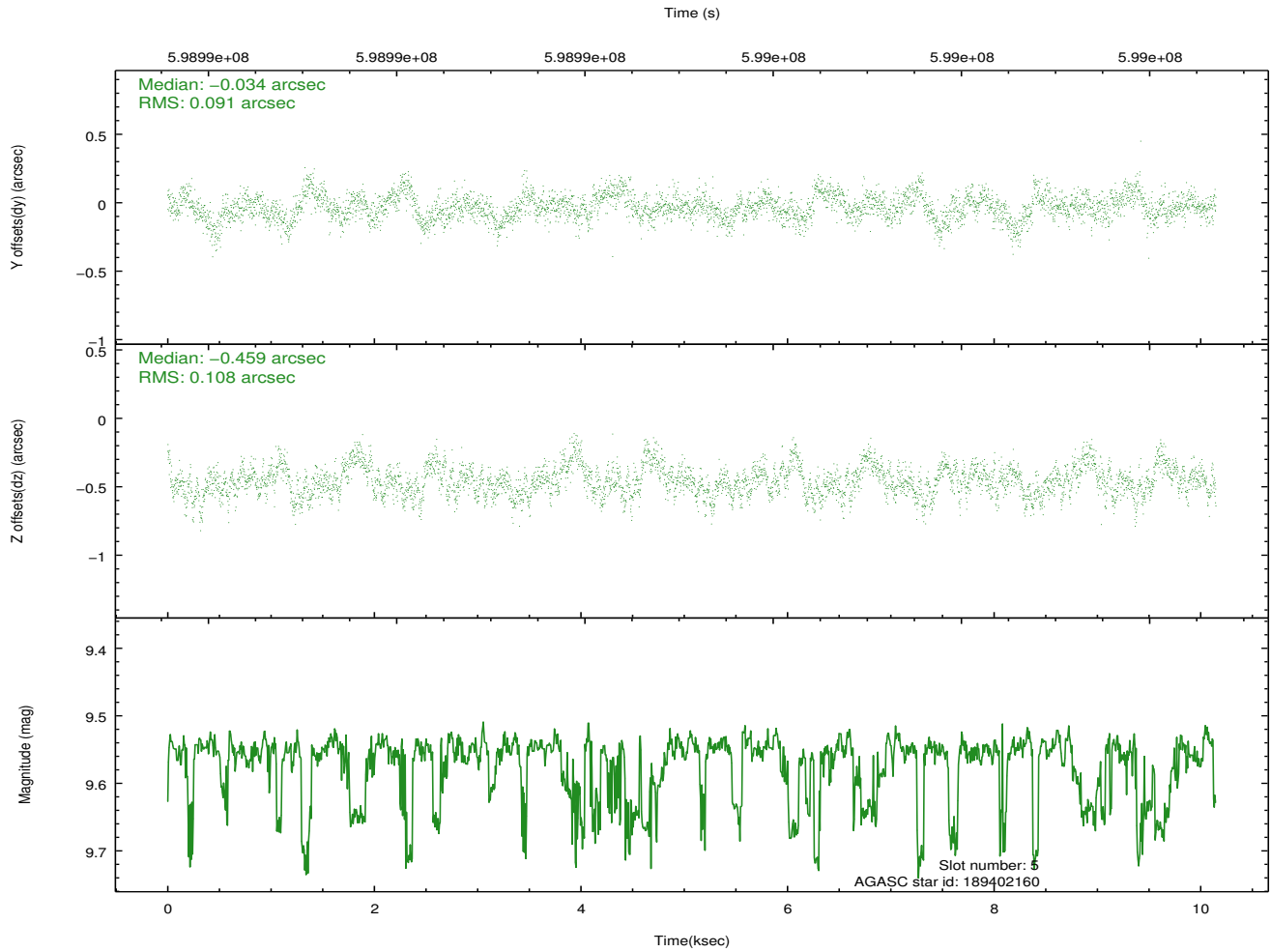
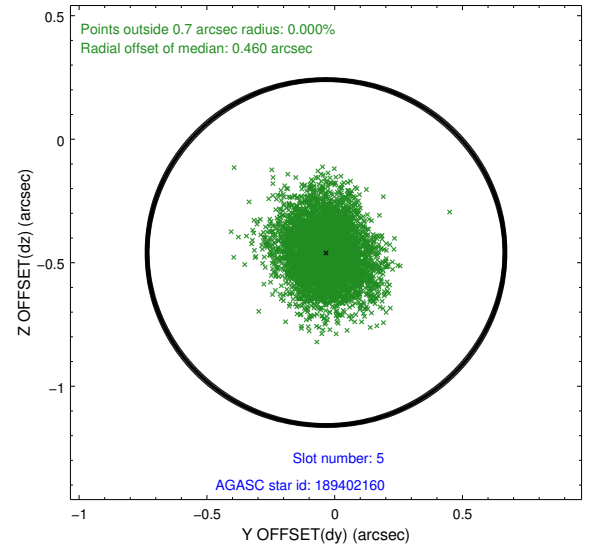
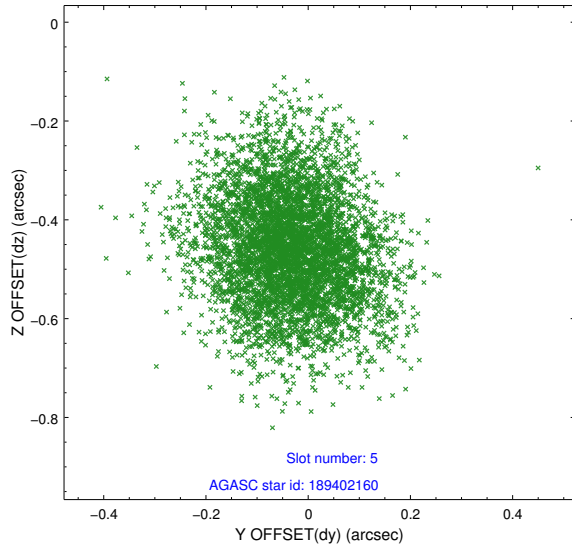
2.4.1 Slot 3



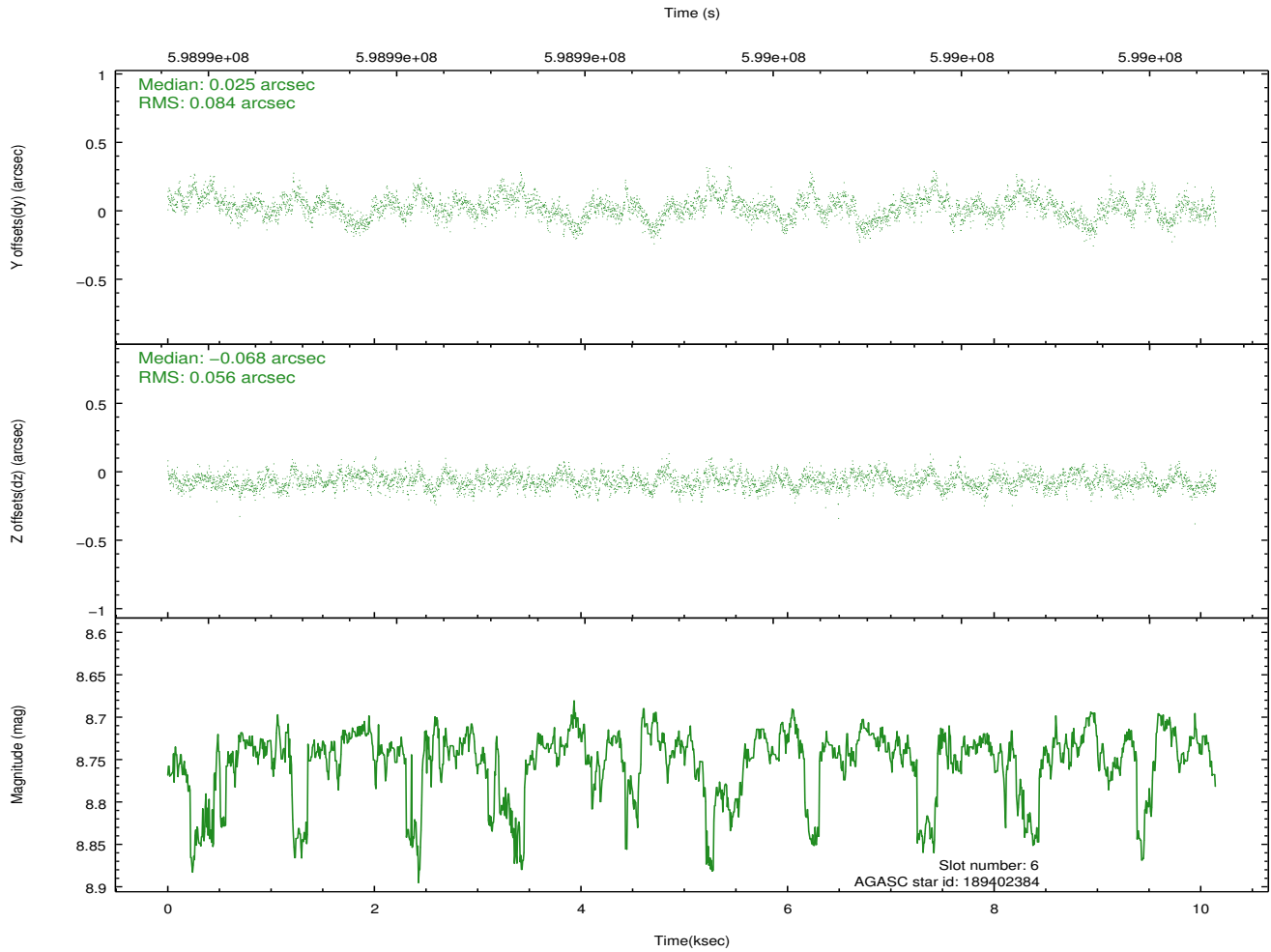
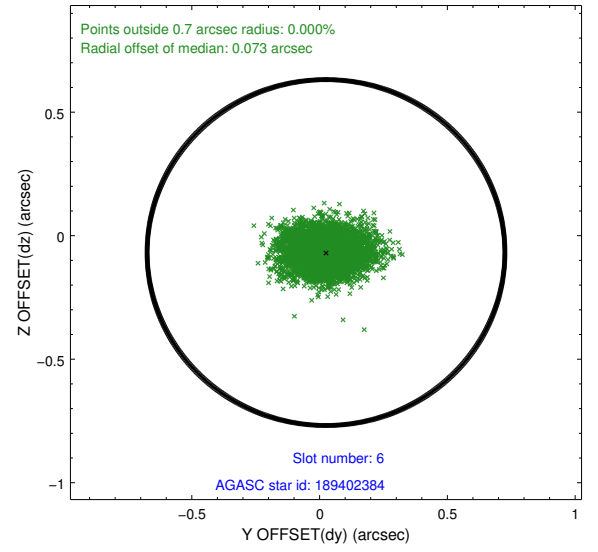
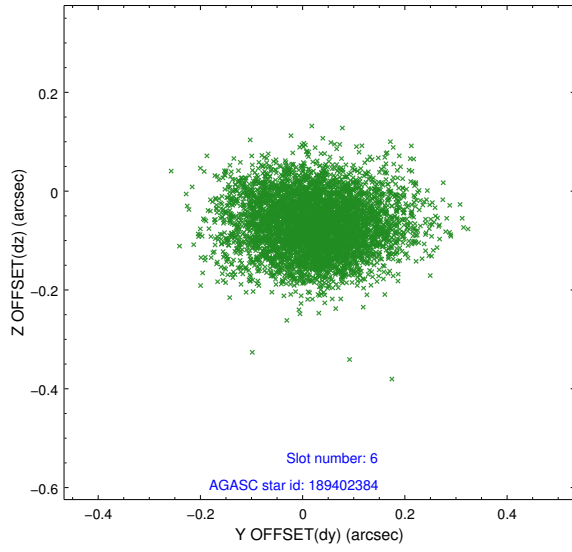
2.4.2 Slot 4



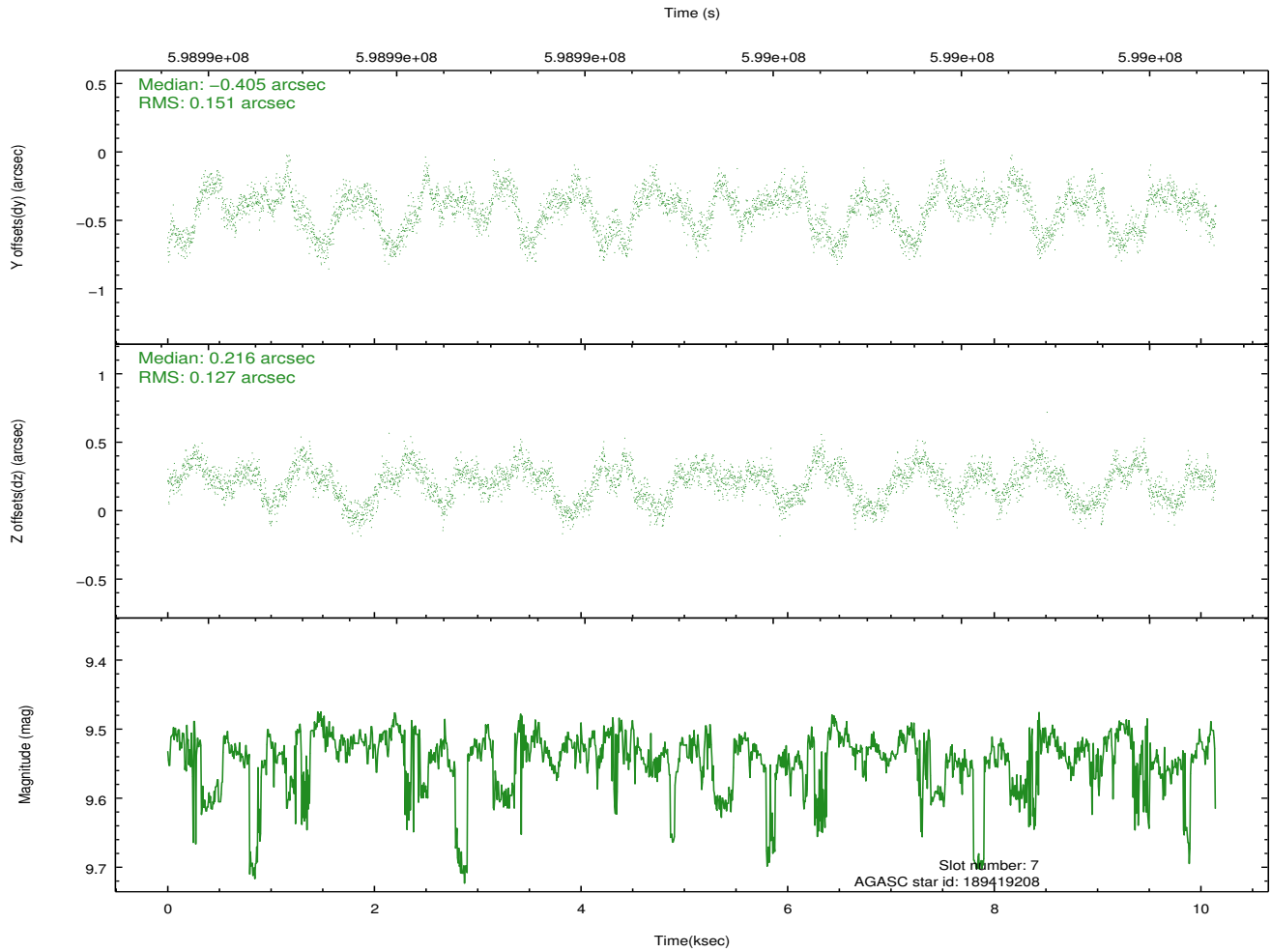
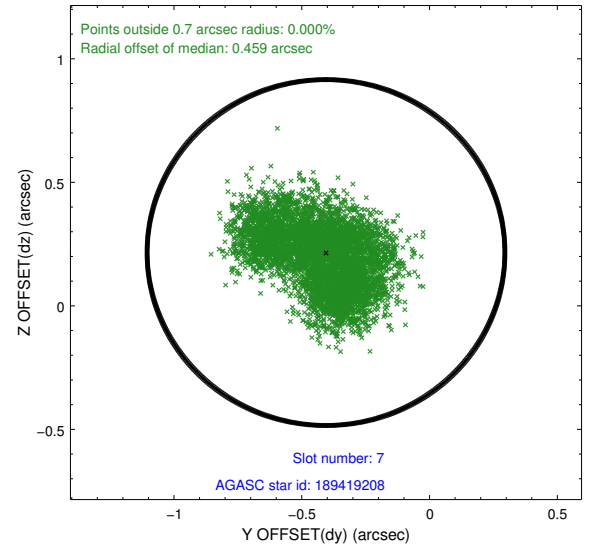
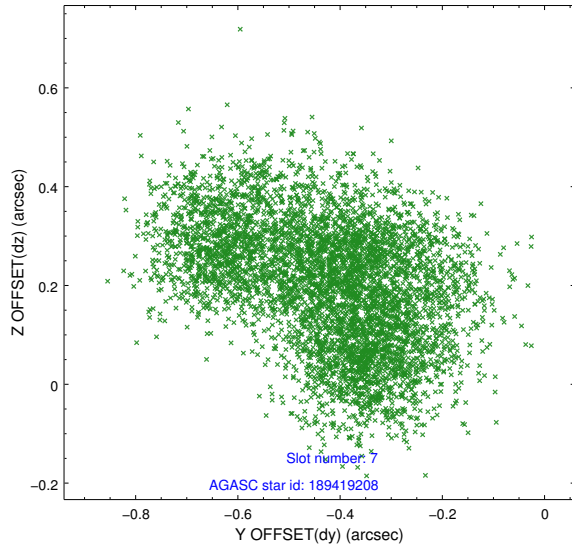
2.4.3 Slot 5



2.4.4 Slot 6

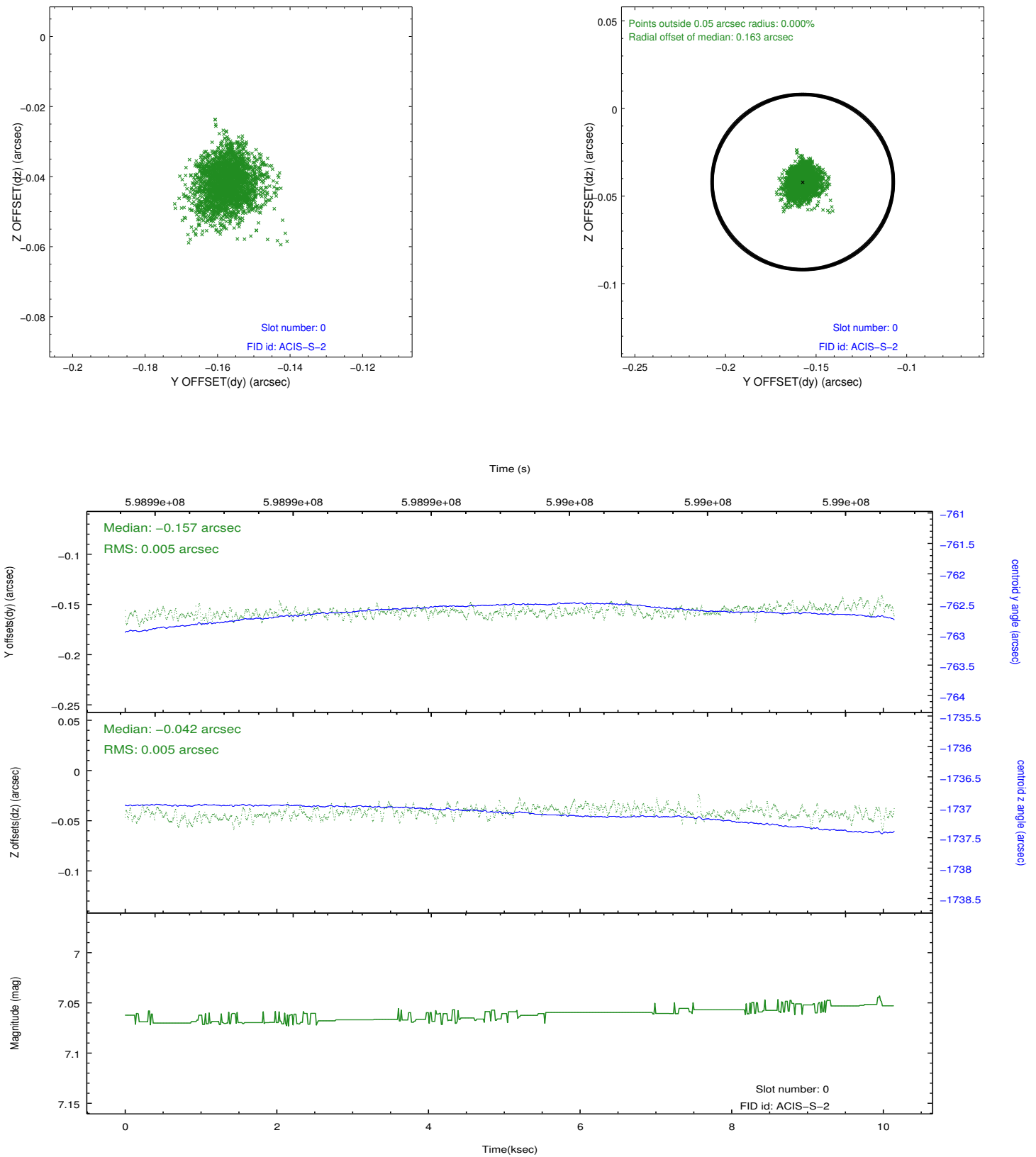


2.4.5 Slot 7

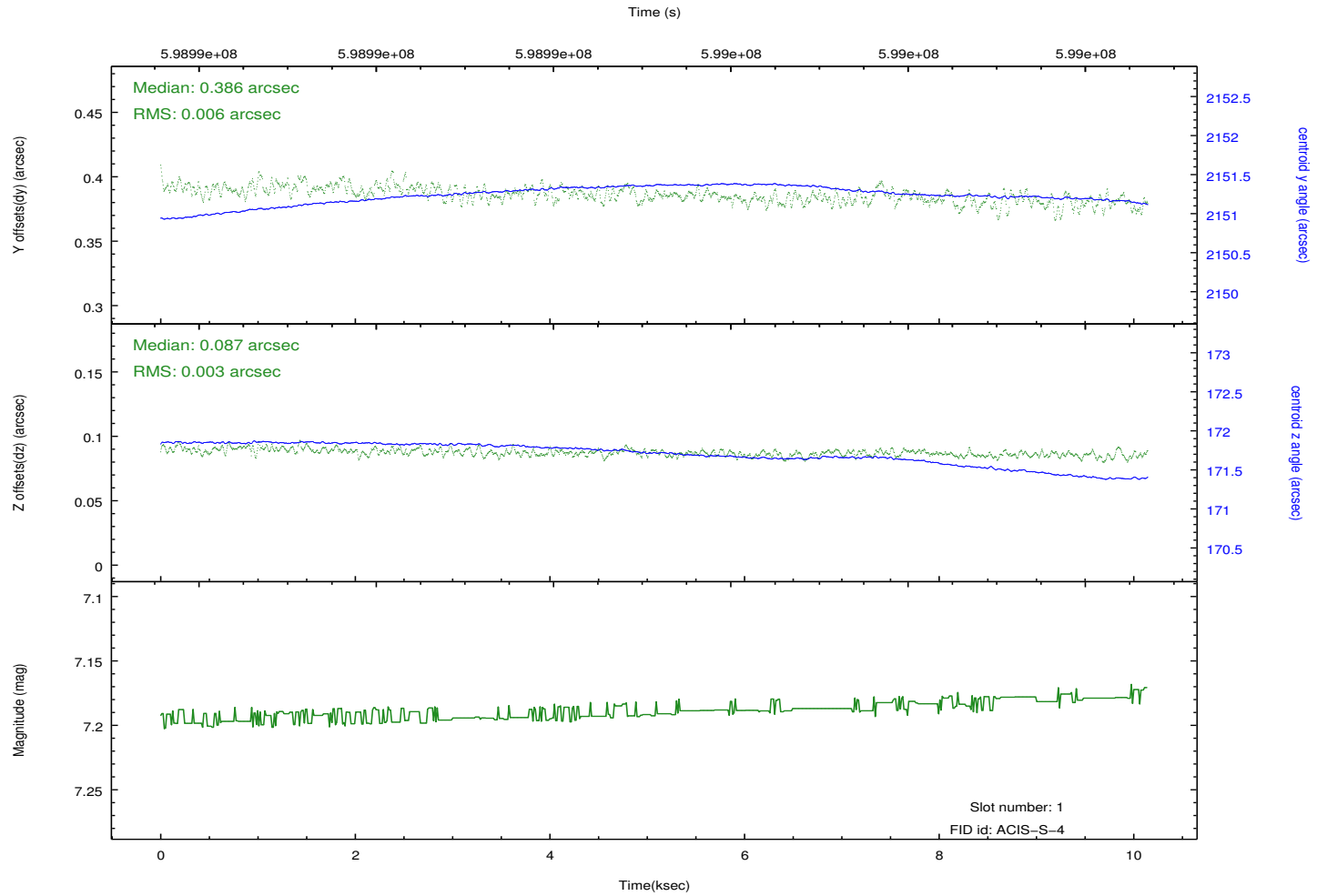
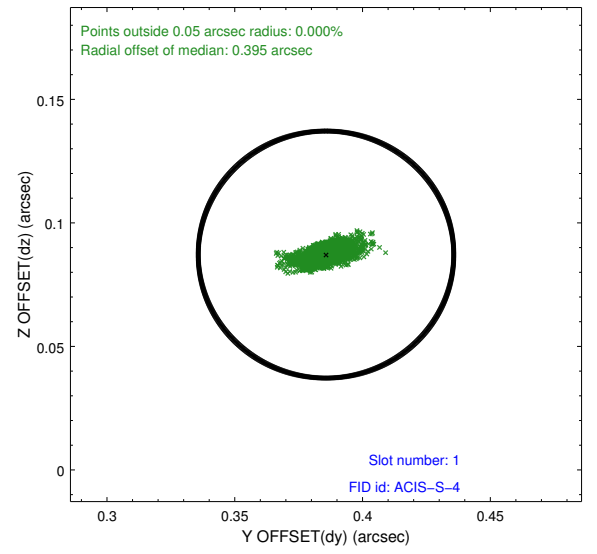
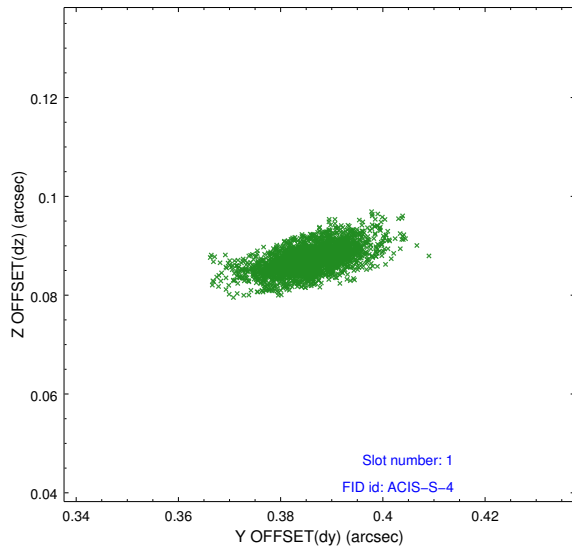


2.5 FID Slots

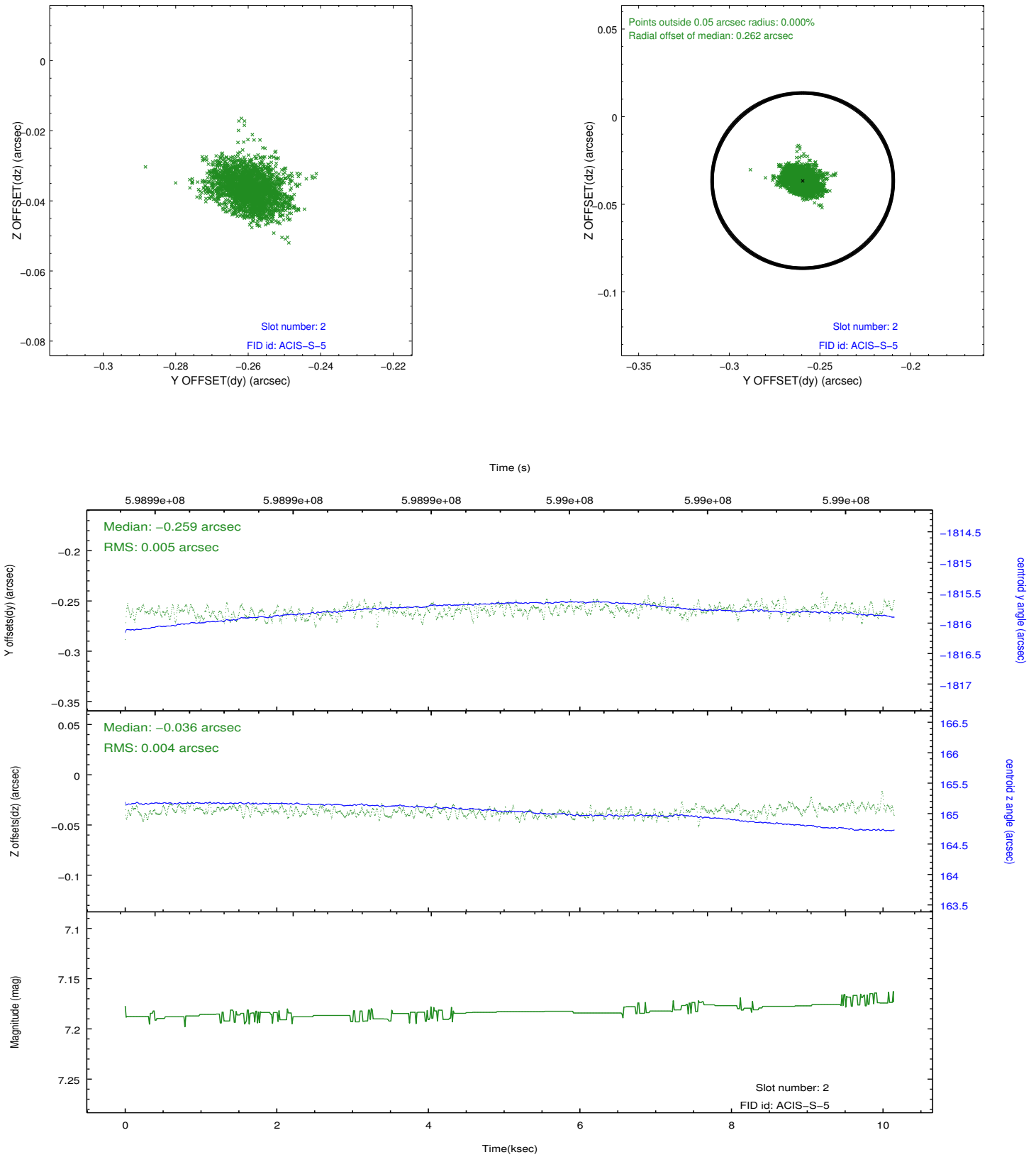
2.5.1 Slot 0



2.5.2 Slot 1



2.5.3 Slot 2



A Summary

A.1 Status

V&V Scientist	David Huenemoerder
V&V Date (YYYY-MM-DD)	2016.12.25
V&V Edition	1
V&V Disposition and Status	OK
V&V Charge Time	10.062144500613

A.2 Comments