

V&V Reference Report

L2 ASCDS Version : 10.6

Observation 19361 - L2 Version 1
Chandra X-Ray Center

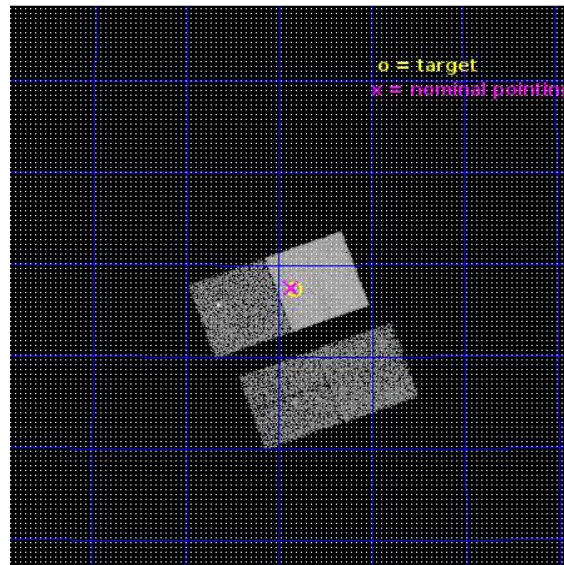
L2 Processing Date : Oct 15 2017

Contents

1	Front	2
2	OBI	3
2.1	OBI	3
2.1.1	Images	3
2.1.2	Bias	3
2.1.3	Parameters	4
2.1.4	Events	4
2.2	Compared Parameters	5
2.3	Aspect	6
2.4	Star Slots	9
2.4.1	Slot 3	9
2.4.2	Slot 4	10
2.4.3	Slot 5	11
2.4.4	Slot 6	12
2.4.5	Slot 7	13
2.5	FID Slots	14
2.5.1	Slot 0	14
2.5.2	Slot 1	15
2.5.3	Slot 2	16
A	Summary	17
A.1	Status	17
A.2	Comments	17

1 Front

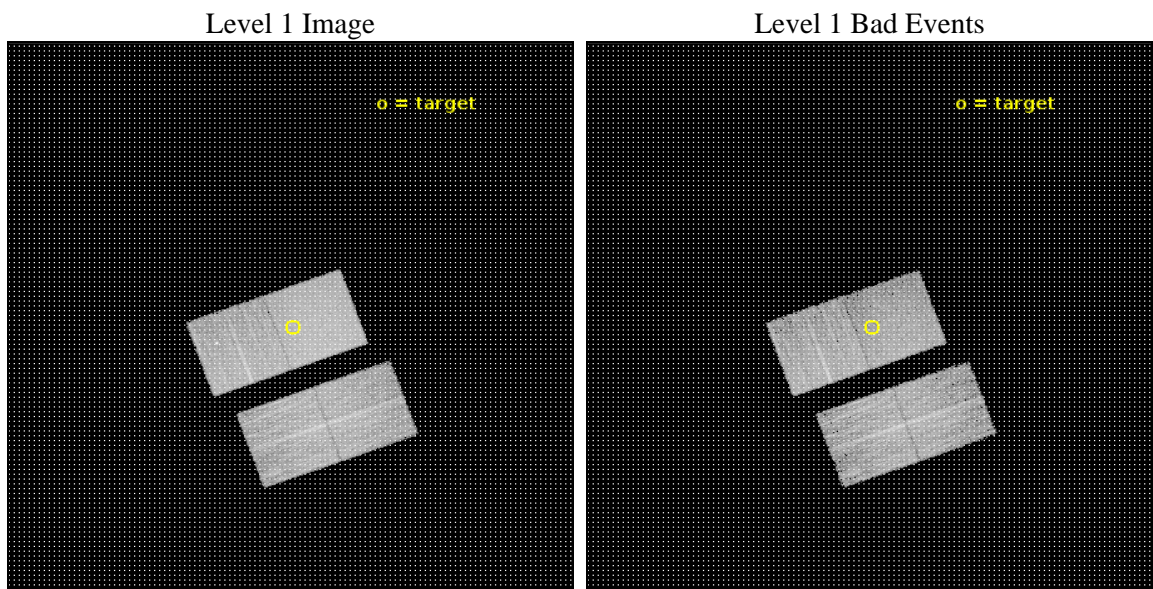
seq_num	601318	Sequence number
obs_id	19361	Observation id
title	A Statistically Complete High Resolution Chandra and Radio (eMERLIN) Survey of the Palomar Nearby Galaxies Sample	Proposal title
observer	Ian McHardy	Principal investigator
object	NGC 5660	Source name
dtcycle	0	
cycle	P	events from which exps? Prim/Second/Both
ra_targ	217.4575	Observer's specified target RA [deg]
dec_targ	49.622611	Observer's specified target Dec [deg]
ra_nom	217.46599629689	Nominal RA [deg]
dec_nom	49.625397274014	Nominal Dec [deg]
roll_nom	340.07251436289	Nominal Roll [deg]
revision	1	Processing version of data
ontime	10071.528294206	Sum of GTIs [s]
livetime	9939.9363624906	Livetime [s]
ontime2	10071.405174255	Sum of GTIs [s]
ontime3	10071.446214199	Sum of GTIs [s]
ontime6	10071.487254262	Sum of GTIs [s]
ontime7	10071.528294206	Sum of GTIs [s]
l2events	56645	Number of level 2 events



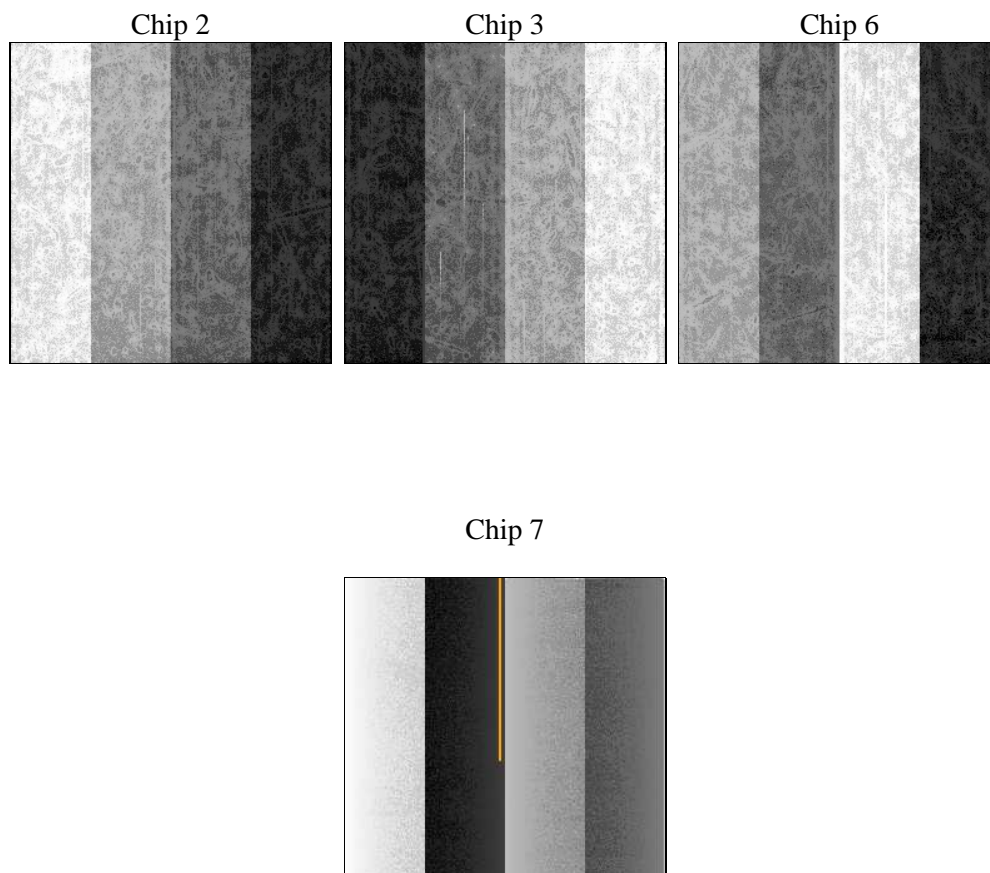
2 OBI

2.1 OBI

2.1.1 Images



2.1.2 Bias



2.1.3 Parameters

obi_num	0	Obi number	sched_exp_time	9999.347000	[s] Scheduled observation exposure time
ascdsver	10.6	Processing system revision	ontime	10071.528294206	Sum of GTIs [s]
caldsver	4.7.6	 	ontime2	10071.405174255	Sum of GTIs [s]
date	2017-10-15T18:40:57	Date and time of file creation	ontime3	10071.446214199	Sum of GTIs [s]
revision	1	Processing version of data	ontime6	10071.487254262	Sum of GTIs [s]
			ontime7	10071.528294206	Sum of GTIs [s]
			l1events	287881	Number of level 1 events

2.1.4 Events

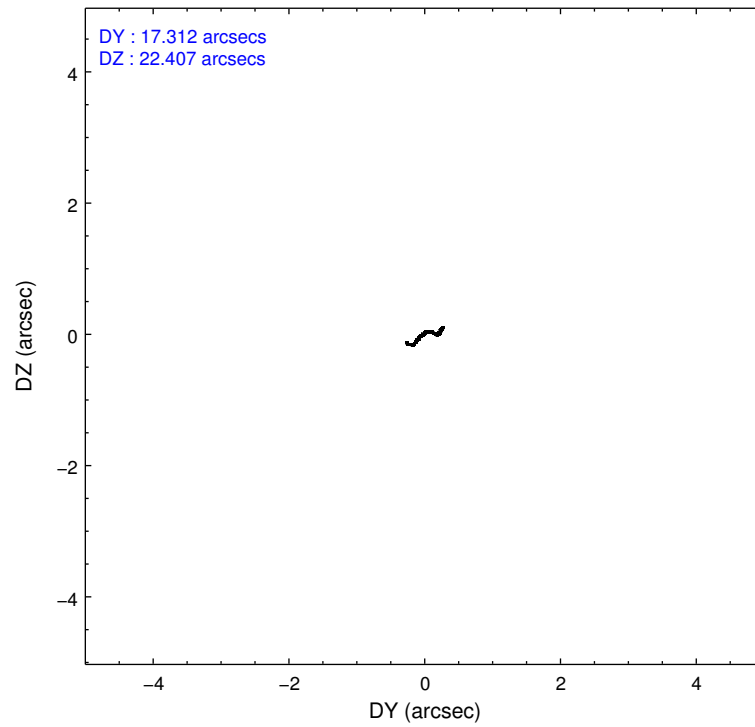
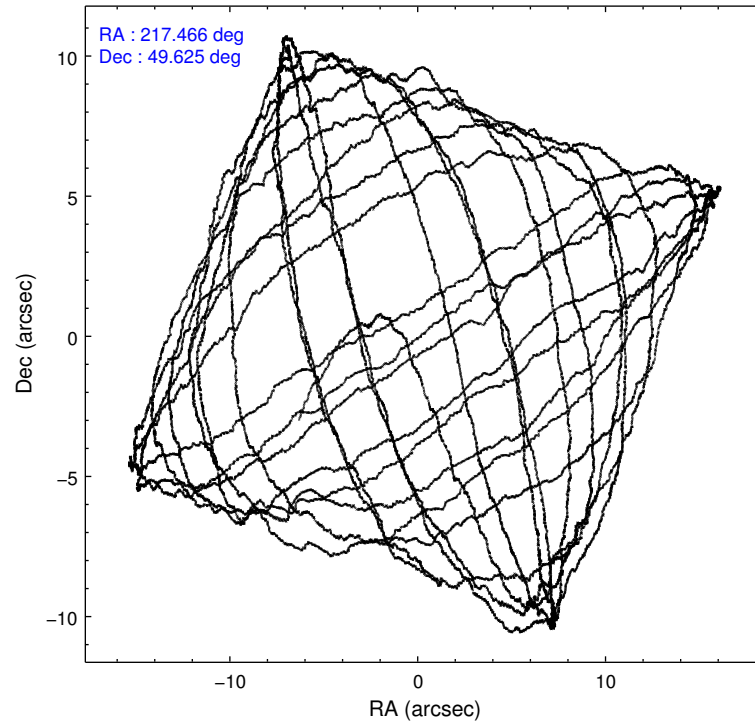
	ccd 2	ccd 3	ccd 6	ccd 7
level 1 events	69244	63390	68707	86540
rejected events	61870	55960	60455	48769
rejected %	89%	88%	87%	56%

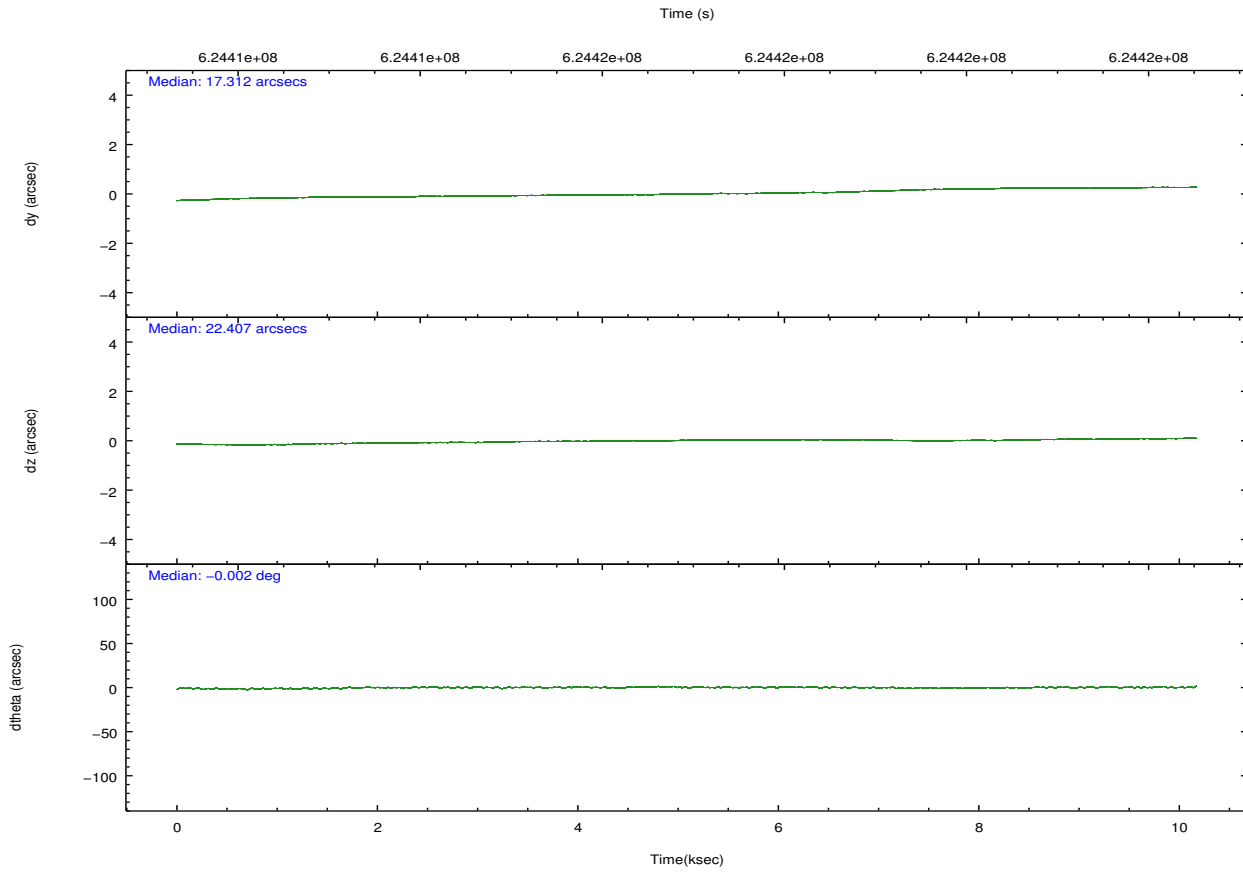
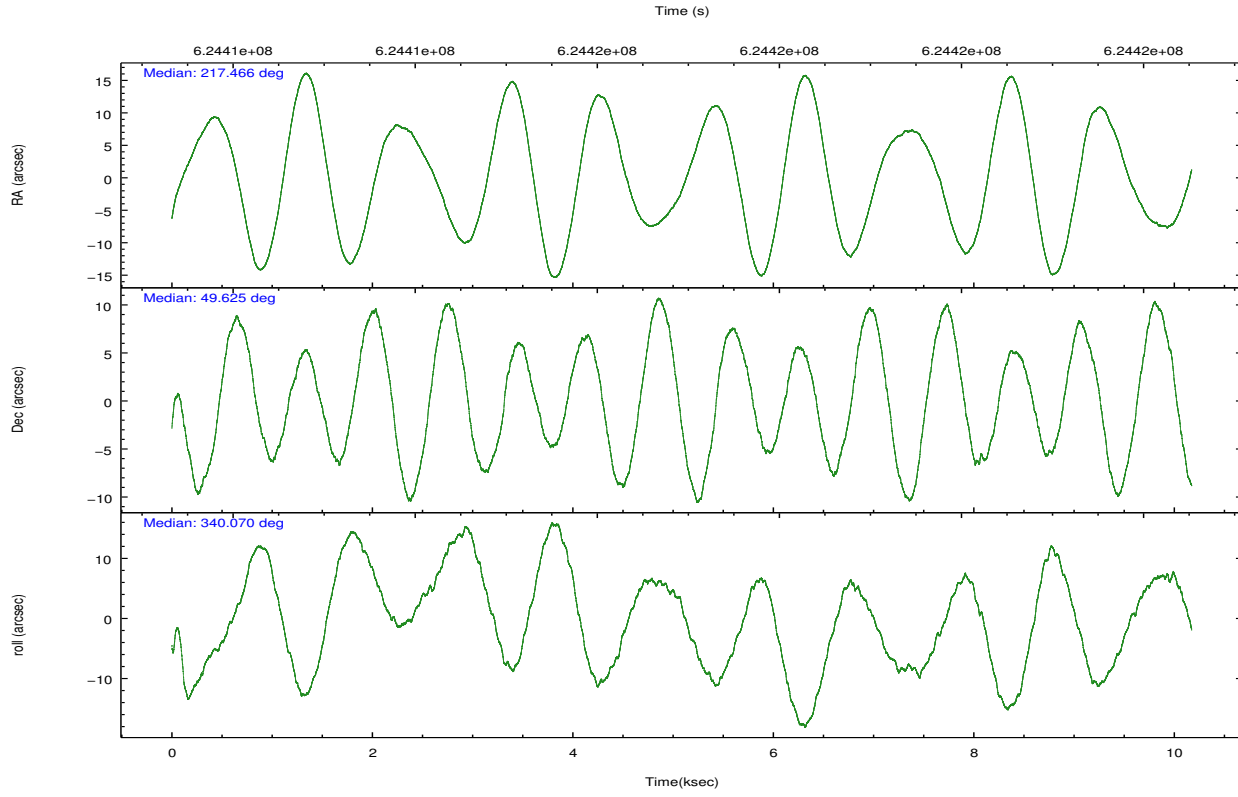
	ccd 2	ccd 3	ccd 6	ccd 7
grade 0 events	2559	2837	2999	3229
	3%	4%	4%	3%
grade 1 events	32	34	28	116
	0%	0%	0%	0%
grade 2 events	1931	1652	1937	8118
	2%	2%	2%	9%
grade 3 events	684	719	795	3138
	0%	1%	1%	3%
grade 4 events	777	737	758	3070
	1%	1%	1%	3%
grade 5 events	2506	3147	3207	8724
	3%	4%	4%	10%
grade 6 events	1426	1489	1771	20233
	2%	2%	2%	23%
grade 7 events	59329	52775	57212	39912
	85%	83%	83%	46%

2.2 Compared Parameters

Parameter	Planned	Actual	Parameter	Planned	Actual
Instrument	ACIS	ACIS	Obspar format version number	7	7
Detector	ACIS-2367	ACIS-2367	Obspar file type	PREDICTED	ACTUAL
Grating	NONE	NONE	Obspar update status	NONE	UPDATED
Data mode	FAINT	FAINT	Number of optional ACIS chips dropped	0	0
Observation mode	POINTING	POINTING	On-chip summing requested	N	N
[deg] Pointing RA	217.424406	217.4659962968901	Subarray requested	NONE	NONE
[deg] Pointing Dec	49.620264	49.62539727401376	Alternating exposures requested	N	N
[deg] Pointing Roll	339.947586	340.0725143628865	[s] Primary exposure time	0.000000	3.1
[mm] SIM focus pos	-0.684267	-0.6828225247311905			
[mm] SIM defocus	0	0.001444936568705701			
[mm] SIM translation stage pos	-190.132523	-190.1425803651734			
[mm] SIM translation stage offset	0	0.01005778216563158			
[s] Observation start time (MET)	624412036.184000	624410705.11888			
Observation start date	2017-10-14T23:46:07	2017-10-14T23:25:05			
[s] Observation end time (MET)	624422035.184000	624422983.0821			
Observation end date	2017-10-15T02:32:46	2017-10-15T02:49:43			
Read mode	TIMED	TIMED			

2.3 Aspect



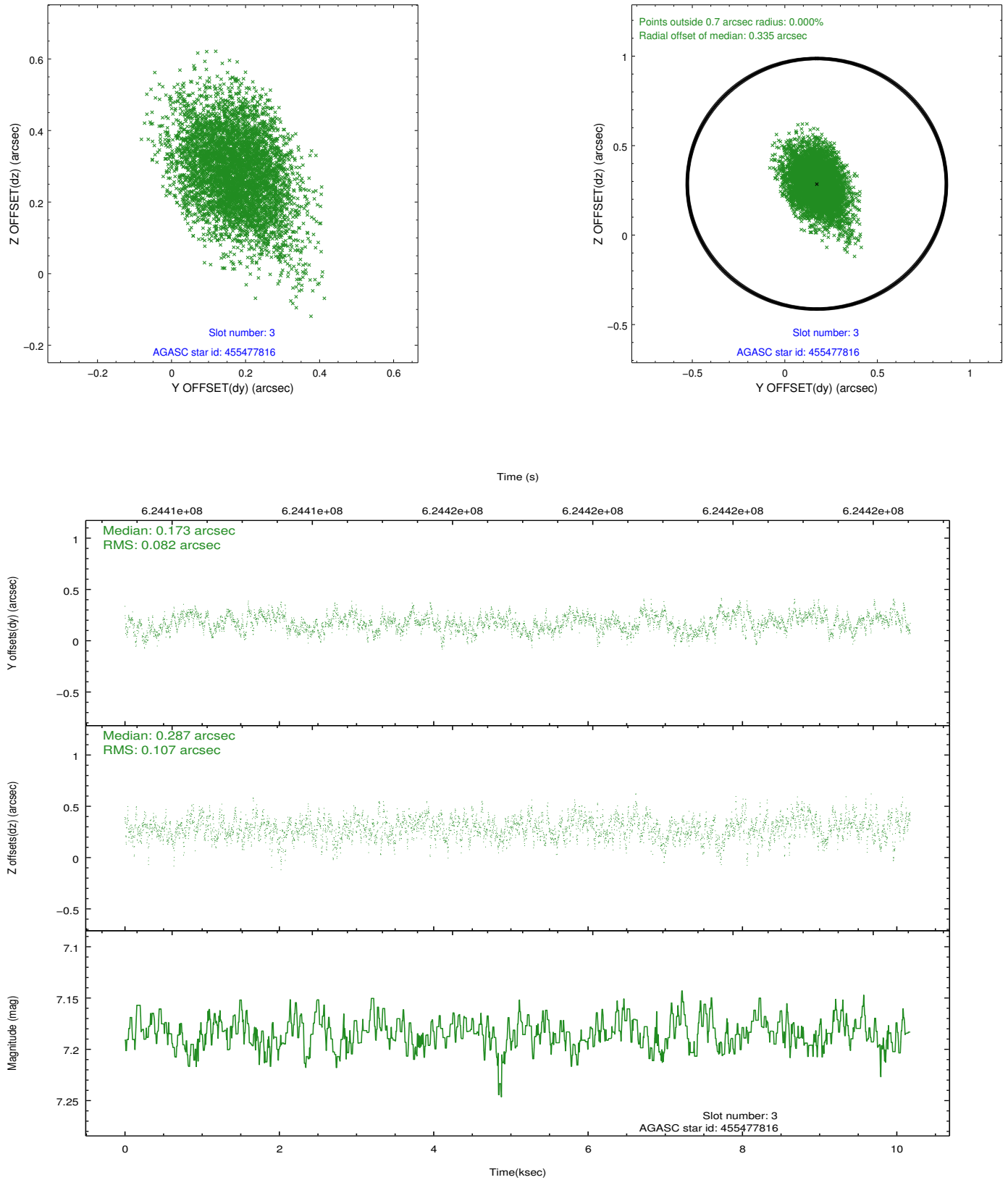


Slot Statistics

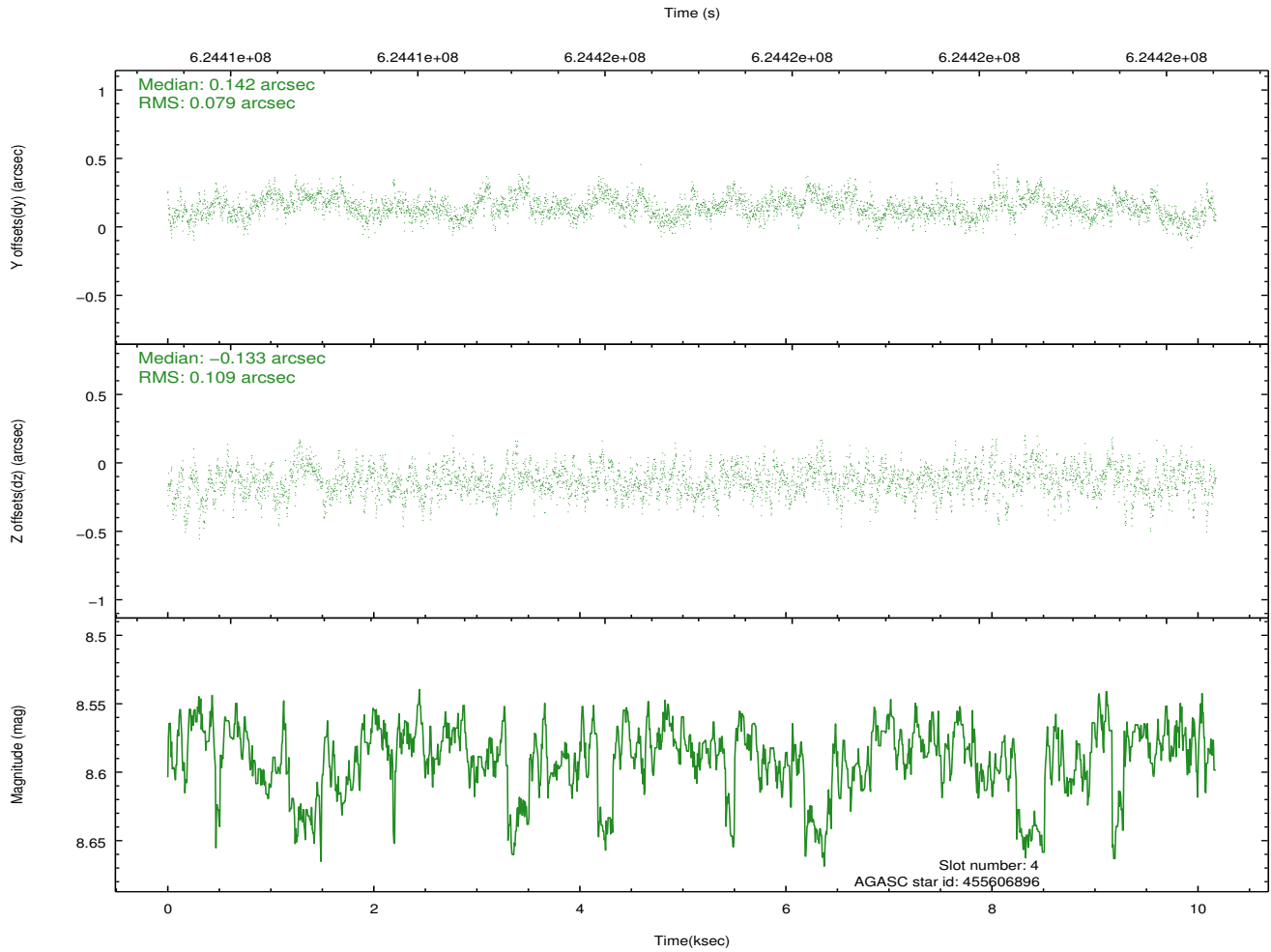
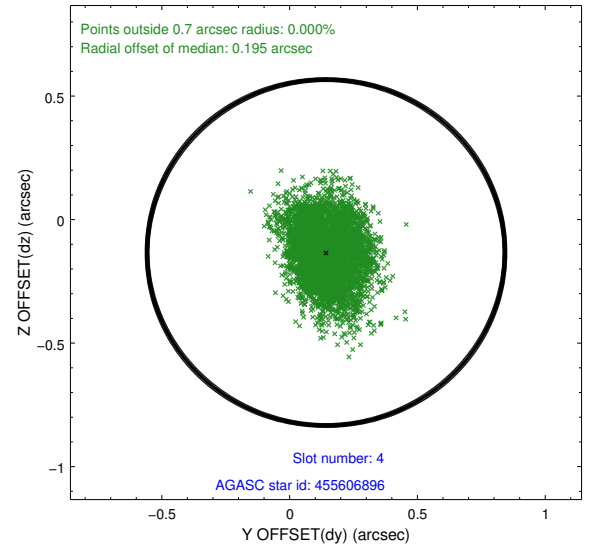
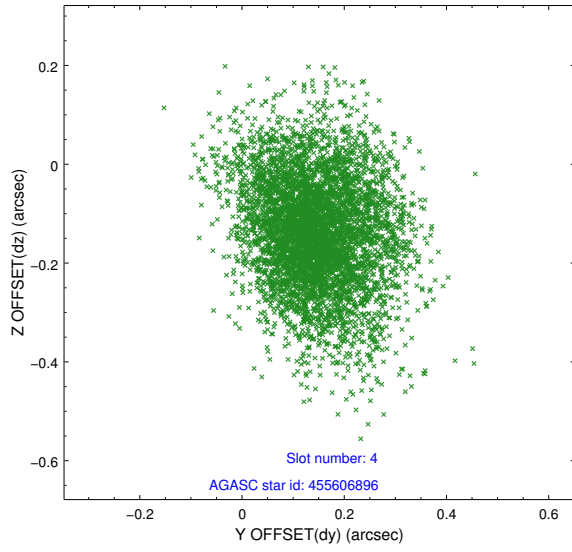
slot	status	used	id	mag	n_pts	med_dy	med_dz	dr1	dr2	ra	dec	mean_y	mean_z
0	FID		ACIS-S-2	6.99	2482	-0.248	-0.164	0.007	0.013	0.000000	0.000000	-770.67	-1744.06
1	FID		ACIS-S-4	7.10	2482	0.278	0.139	0.008	0.015	0.000000	0.000000	2142.95	164.11
2	FID		ACIS-S-6	7.24	2482	-0.057	0.032	0.009	0.017	0.000000	0.000000	392.24	802.03
3	GUIDE	used	455477816	7.18	4963	0.173	0.287	0.141	0.237	216.932084	49.396497	-808.37	-1148.09
4	GUIDE	used	455606896	8.59	4960	0.142	-0.133	0.141	0.240	217.965544	49.585684	1227.91	320.25
5	GUIDE	used	455607344	9.98	4952	-0.235	-0.149	0.285	0.435	218.206701	49.899113	1357.01	1574.05
6	GUIDE	used	455609184	8.90	4958	0.074	0.245	0.163	0.263	217.709184	49.285974	1041.72	-899.73
7	GUIDE	used	455607944	9.30	4957	-0.163	-0.253	0.197	0.318	218.236903	49.738369	1626.88	1057.00

2.4 Star Slots

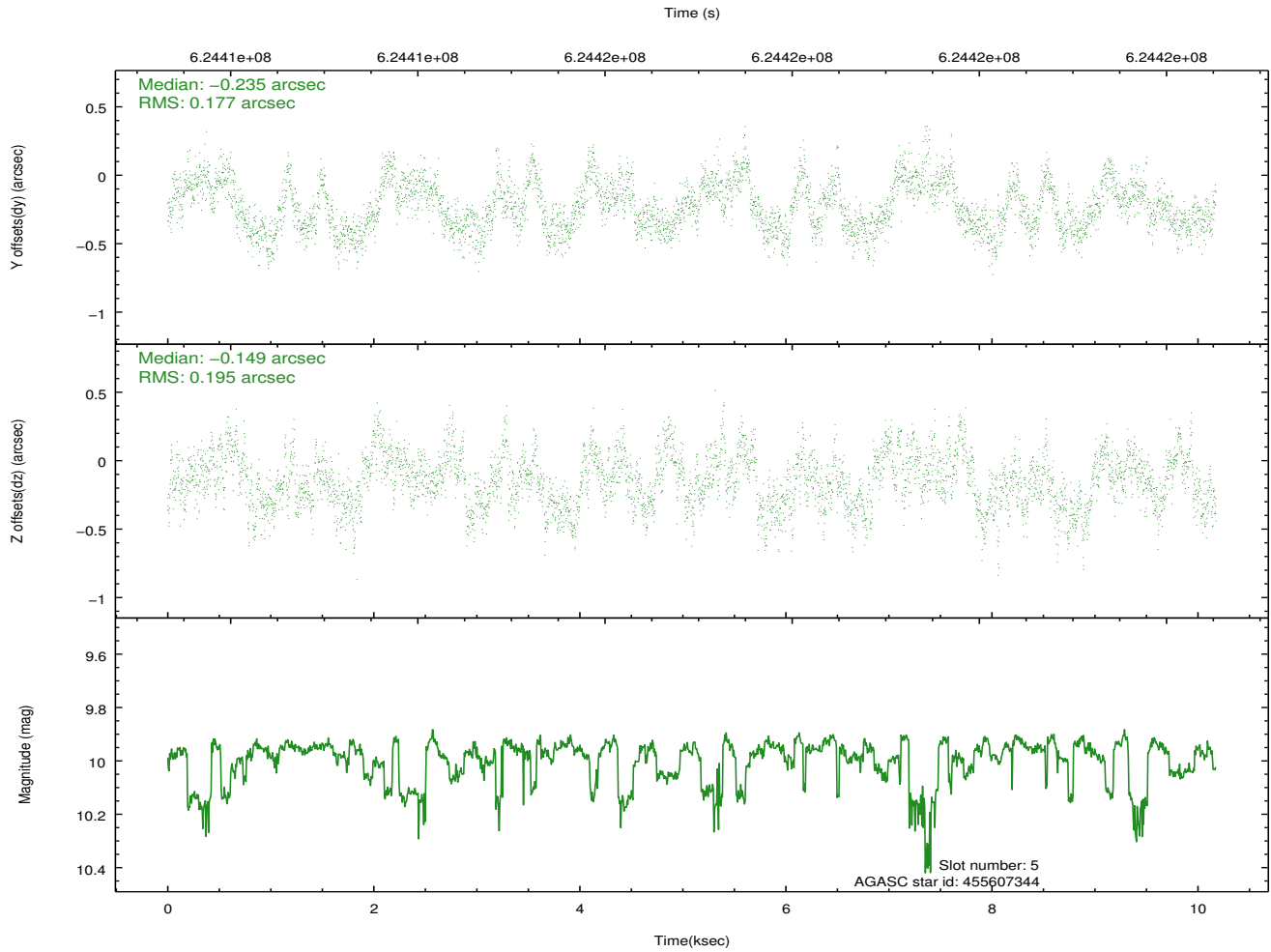
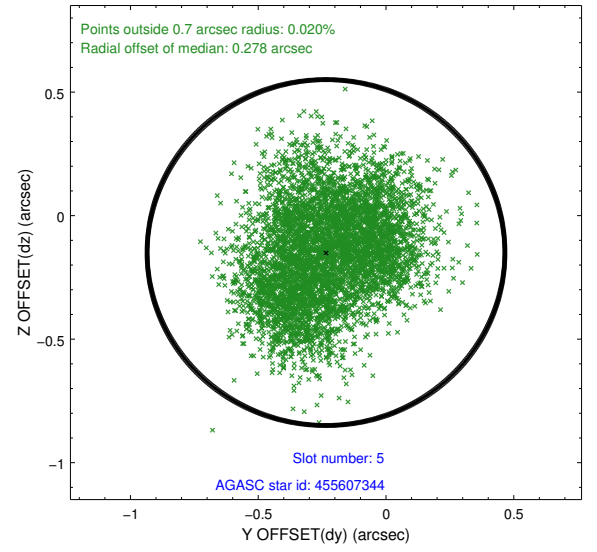
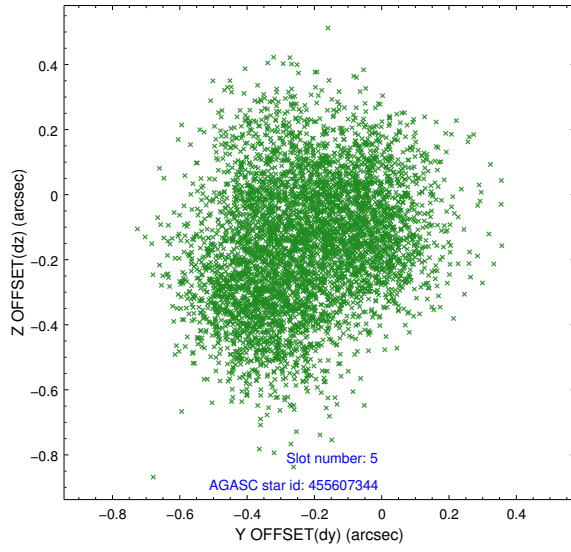
2.4.1 Slot 3



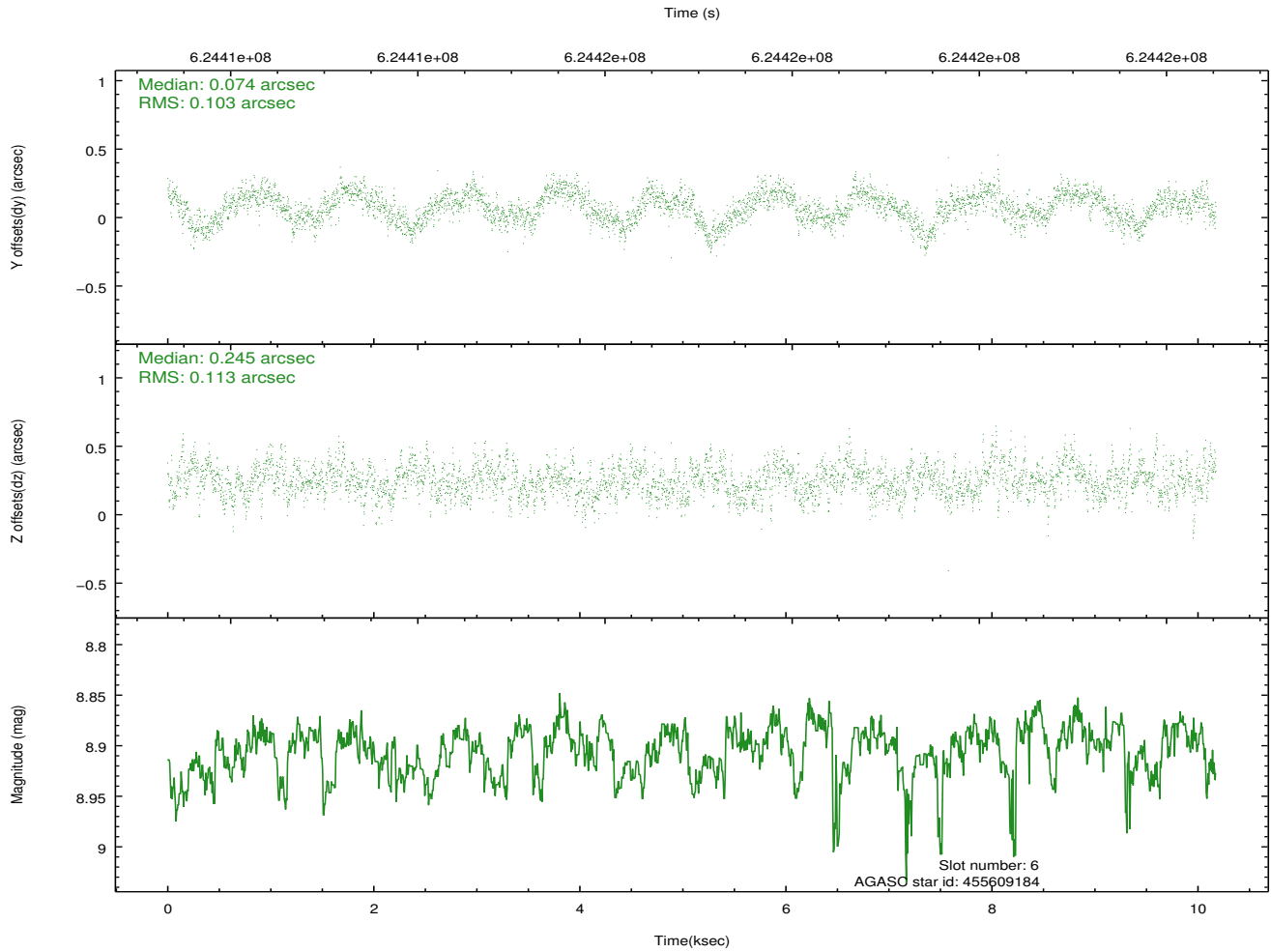
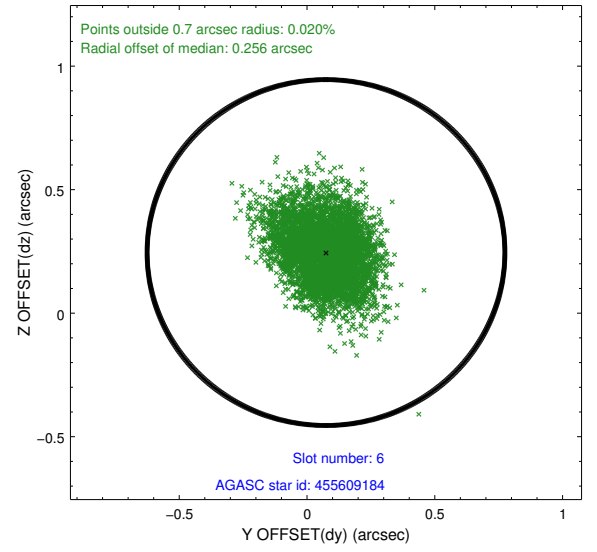
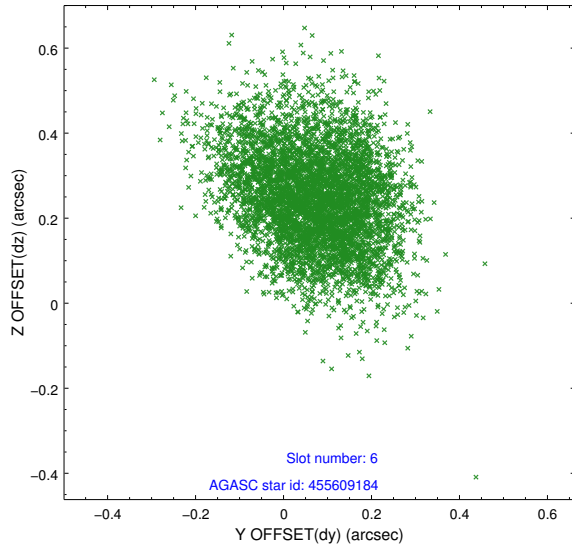
2.4.2 Slot 4



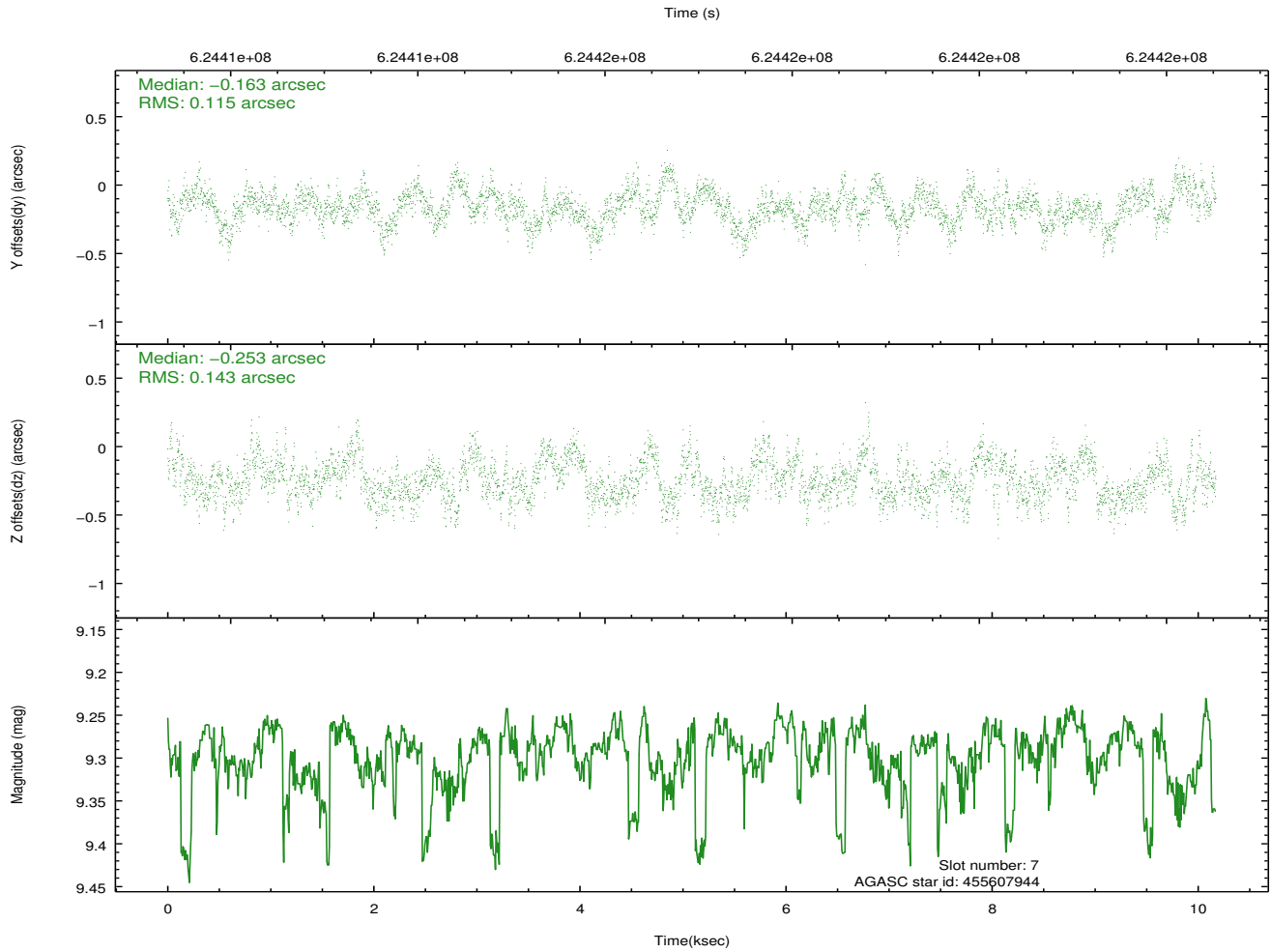
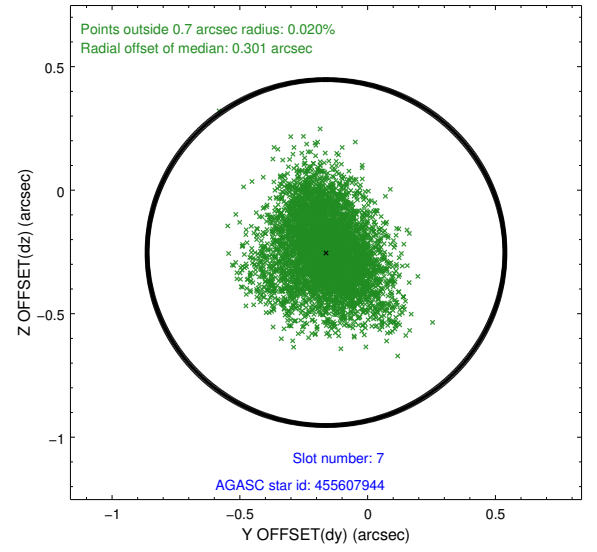
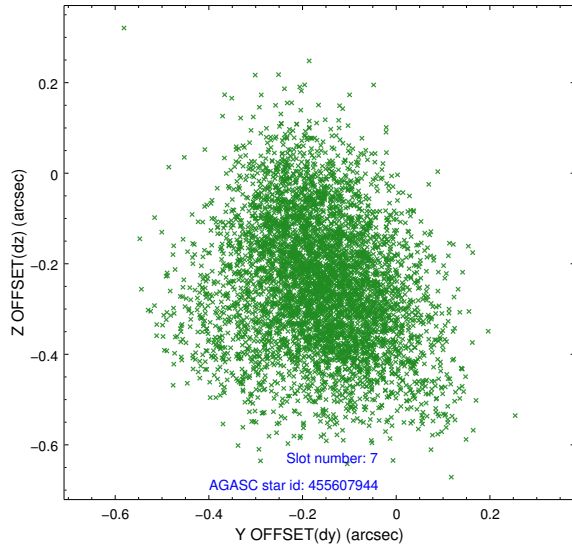
2.4.3 Slot 5



2.4.4 Slot 6

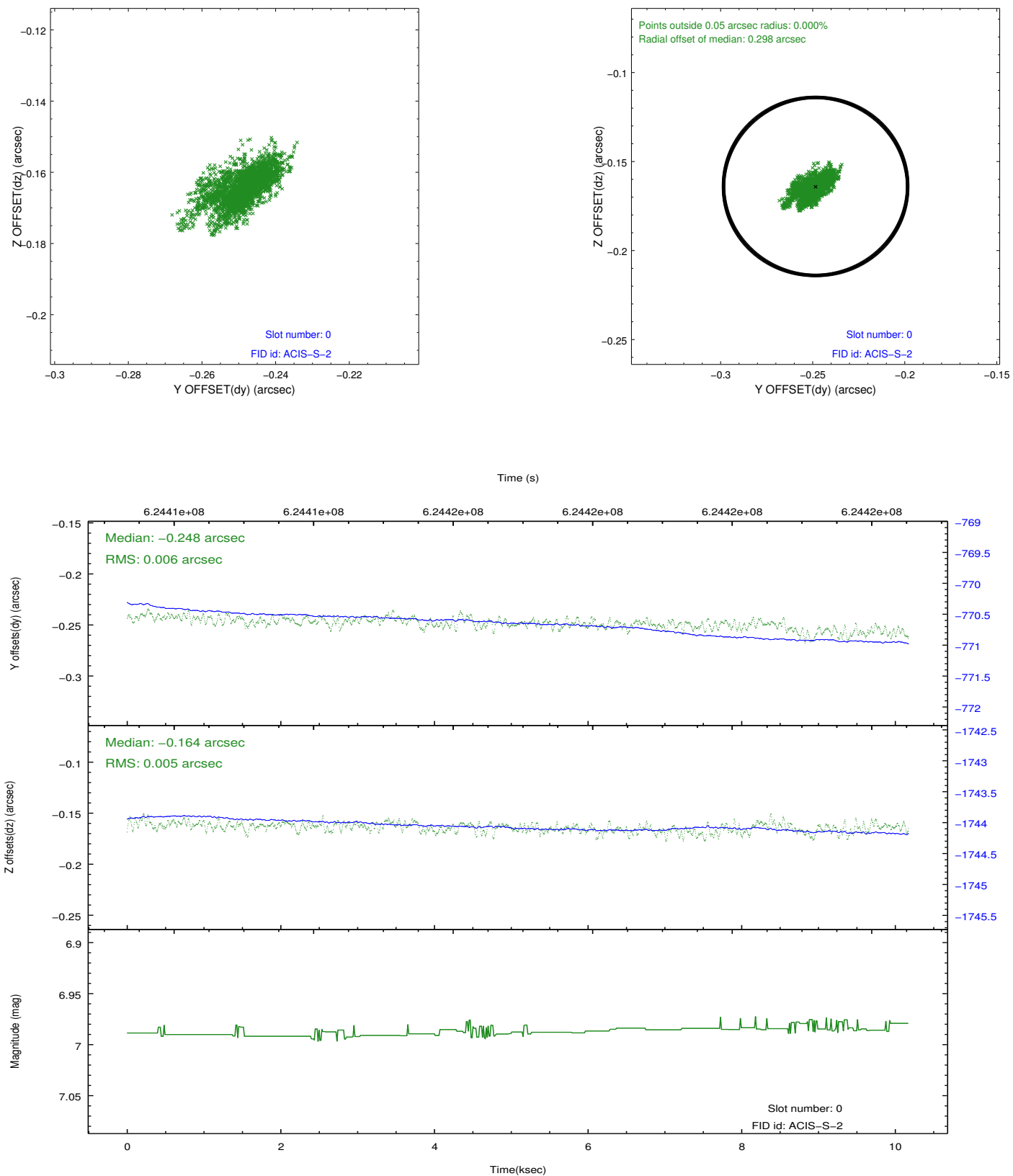


2.4.5 Slot 7

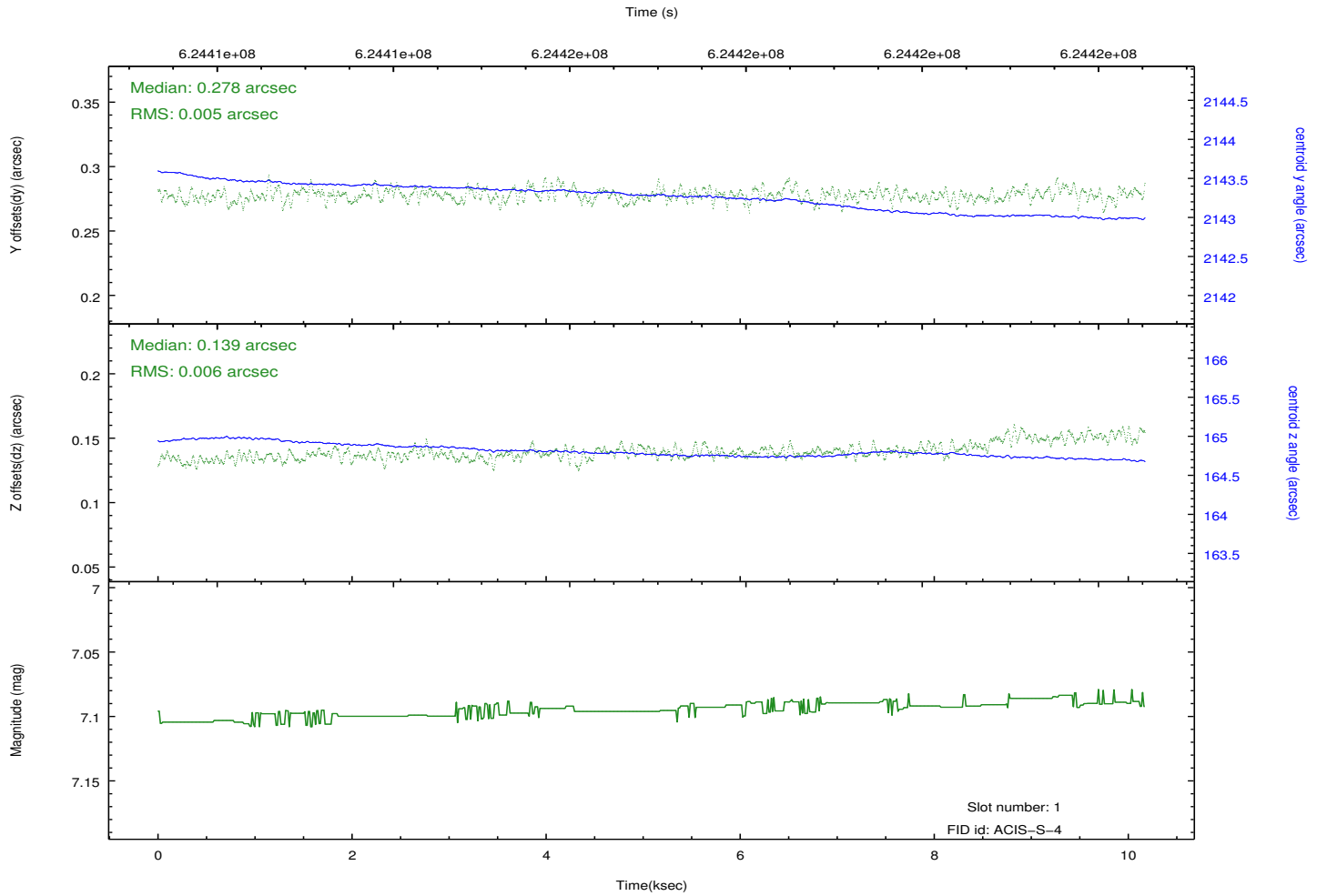
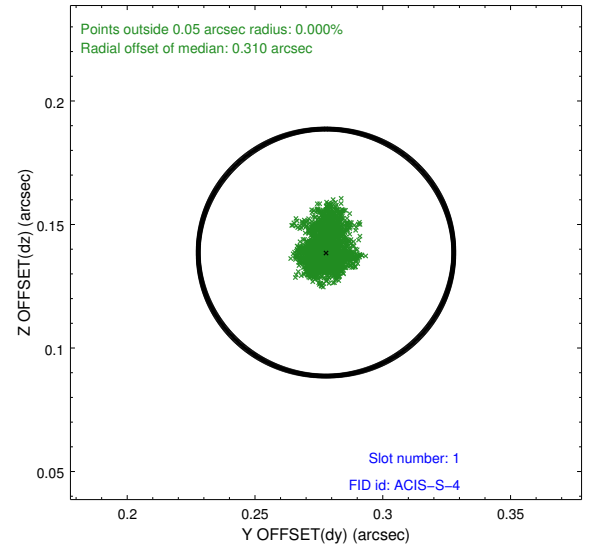
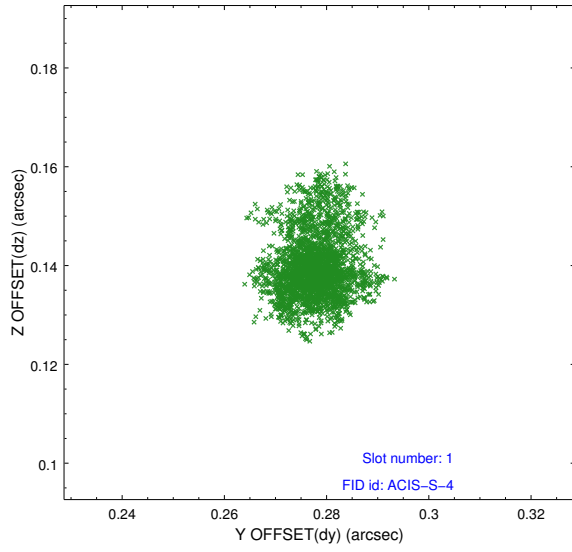


2.5 FID Slots

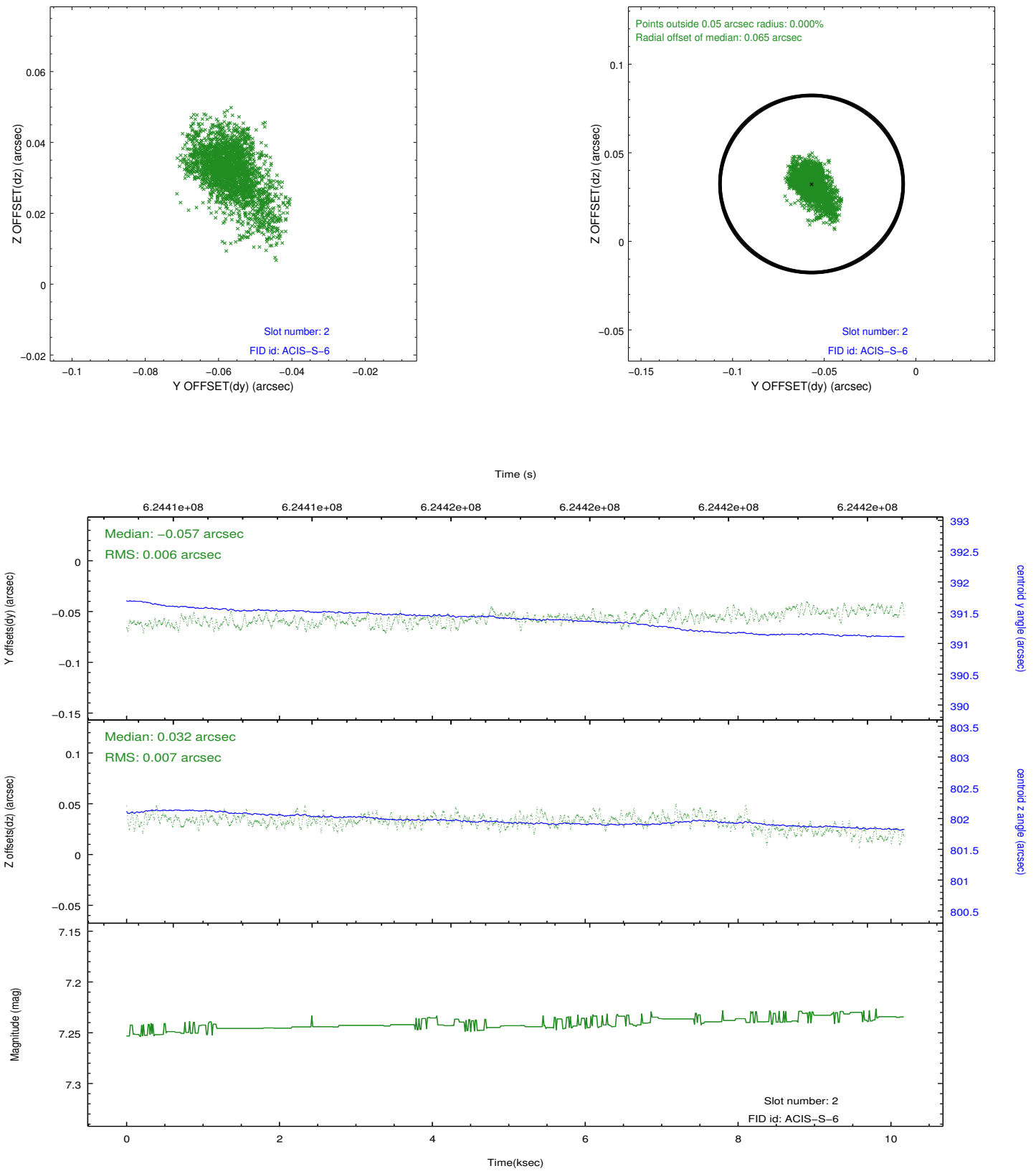
2.5.1 Slot 0



2.5.2 Slot 1



2.5.3 Slot 2



A Summary

A.1 Status

V&V Scientist	Joy Nichols
V&V Date (YYYY-MM-DD)	2017.10.16
V&V Edition	1
V&V Disposition and Status	OK
V&V Charge Time	10.071528294206

A.2 Comments