

V&V Reference Report

L2 ASCDS Version : 10.6

Observation 19343 - L2 Version 1
Chandra X-Ray Center

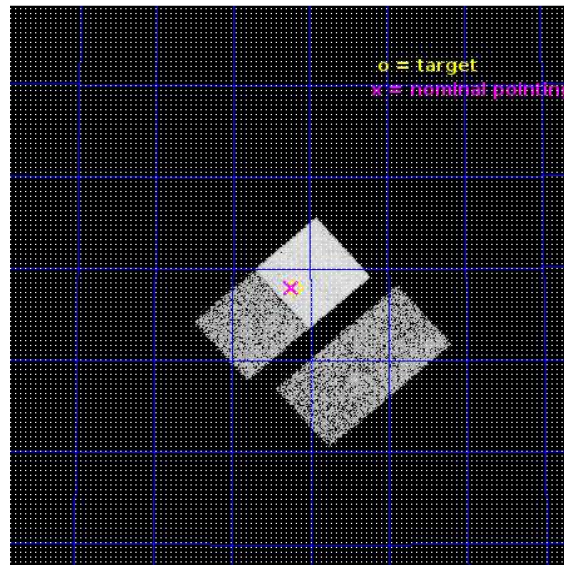
L2 Processing Date : Aug 12 2017

Contents

1	Front	2
2	OBI	3
2.1	OBI	3
2.1.1	Images	3
2.1.2	Bias	3
2.1.3	Parameters	4
2.1.4	Events	4
2.2	Compared Parameters	5
2.3	Aspect	6
2.4	Star Slots	9
2.4.1	Slot 3	9
2.4.2	Slot 4	10
2.4.3	Slot 5	11
2.4.4	Slot 6	12
2.4.5	Slot 7	13
2.5	FID Slots	14
2.5.1	Slot 0	14
2.5.2	Slot 1	15
2.5.3	Slot 2	16
A	Summary	17
A.1	Status	17
A.2	Comments	17

1 Front

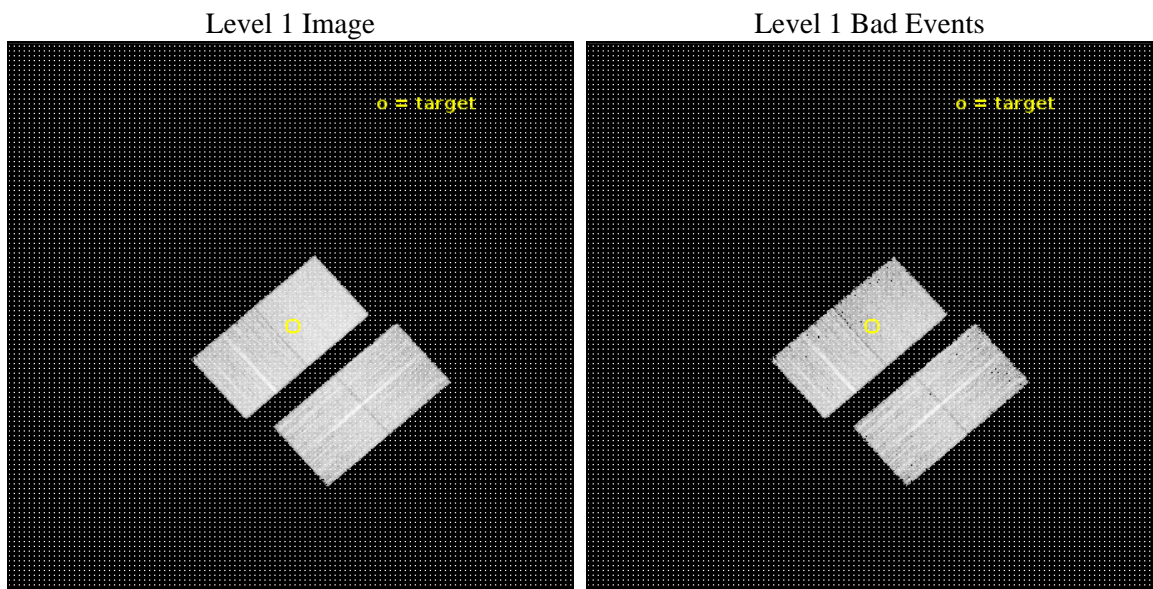
seq_num	601300	Sequence number
obs_id	19343	Observation id
title	A Statistically Complete High Resolution Chandra and Radio (eMERLIN) Survey of the Palomar Nearby Galaxies Sample	Proposal title
observer	Ian McHardy	Principal investigator
object	UGC 6484	Source name
dtcycle	0	
cycle	P	events from which exps? Prim/Second/Both
ra_targ	172.29875	Observer's specified target RA [deg]
dec_targ	57.132194	Observer's specified target Dec [deg]
ra_nom	172.31056743591	Nominal RA [deg]
dec_nom	57.132745805066	Nominal Dec [deg]
roll_nom	318.52491981388	Nominal Roll [deg]
revision	1	Processing version of data
ontime	10270.300079107	Sum of GTIs [s]
livetime	10136.111047689	Livetime [s]
ontime2	10248.313396811	Sum of GTIs [s]
ontime3	10270.300079107	Sum of GTIs [s]
ontime6	10270.300079107	Sum of GTIs [s]
ontime7	10270.300079107	Sum of GTIs [s]
l2events	60175	Number of level 2 events



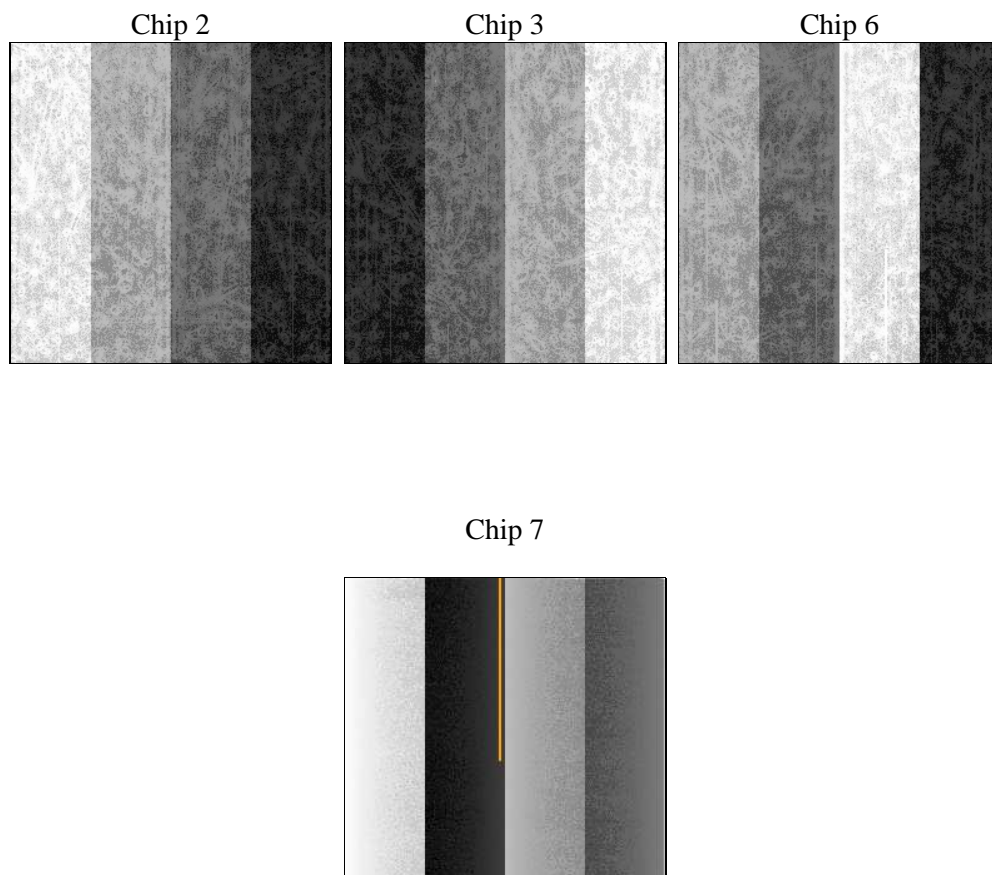
2 OBI

2.1 OBI

2.1.1 Images



2.1.2 Bias



2.1.3 Parameters

obi_num	0	Obi number	sched_exp_time	10200.000000	[s] Scheduled observation exposure time
ascdsver	10.6	Processing system revision	ontime	10270.300079107	Sum of GTIs [s]
caldsver	4.7.5	 	ontime2	10248.313396811	Sum of GTIs [s]
date	2017-08-12T04:15:57	Date and time of file creation	ontime3	10270.300079107	Sum of GTIs [s]
revision	1	Processing version of data	ontime6	10270.300079107	Sum of GTIs [s]
			ontime7	10270.300079107	Sum of GTIs [s]
			l1events	305247	Number of level 1 events

2.1.4 Events

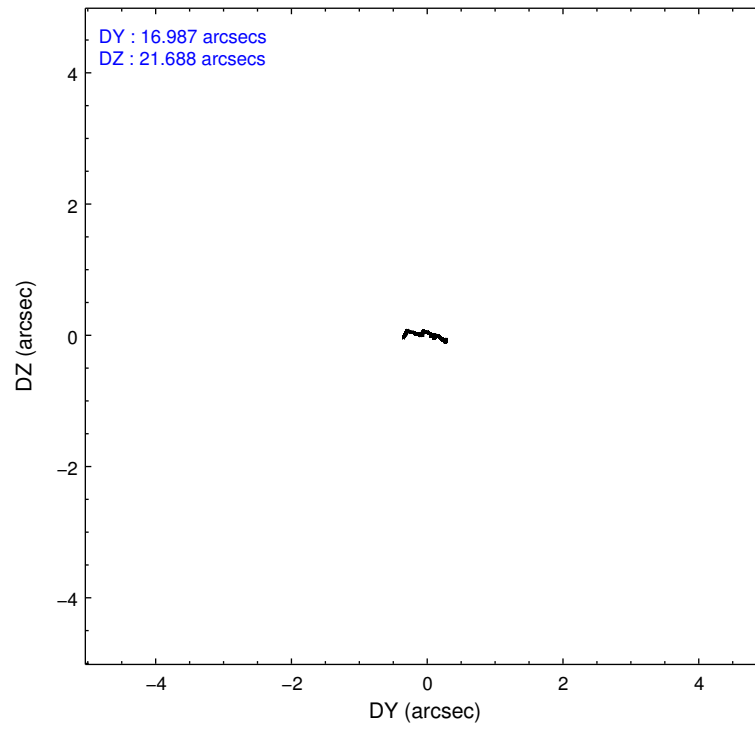
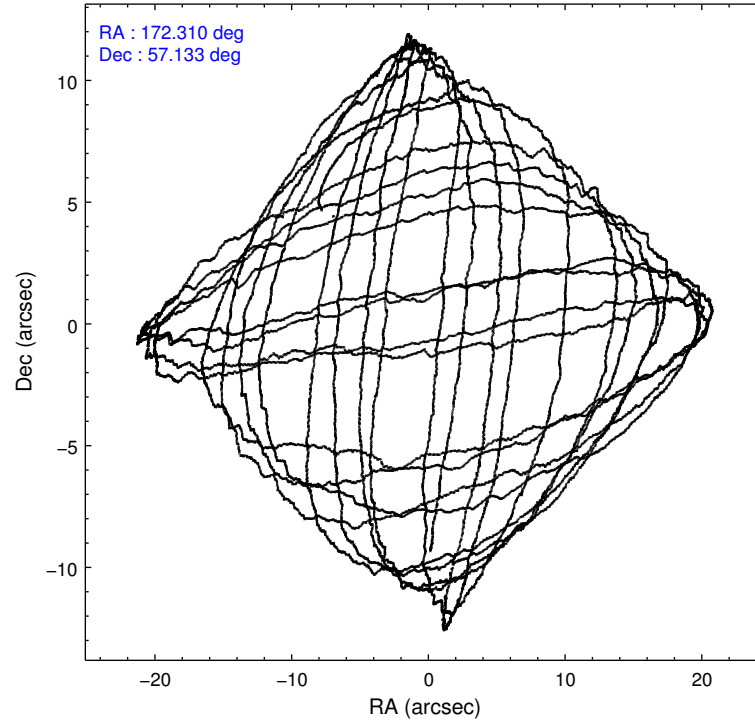
	ccd 2	ccd 3	ccd 6	ccd 7
level 1 events	73925	66584	71867	92871
rejected events	65967	58826	63726	52210
rejected %	89%	88%	88%	56%

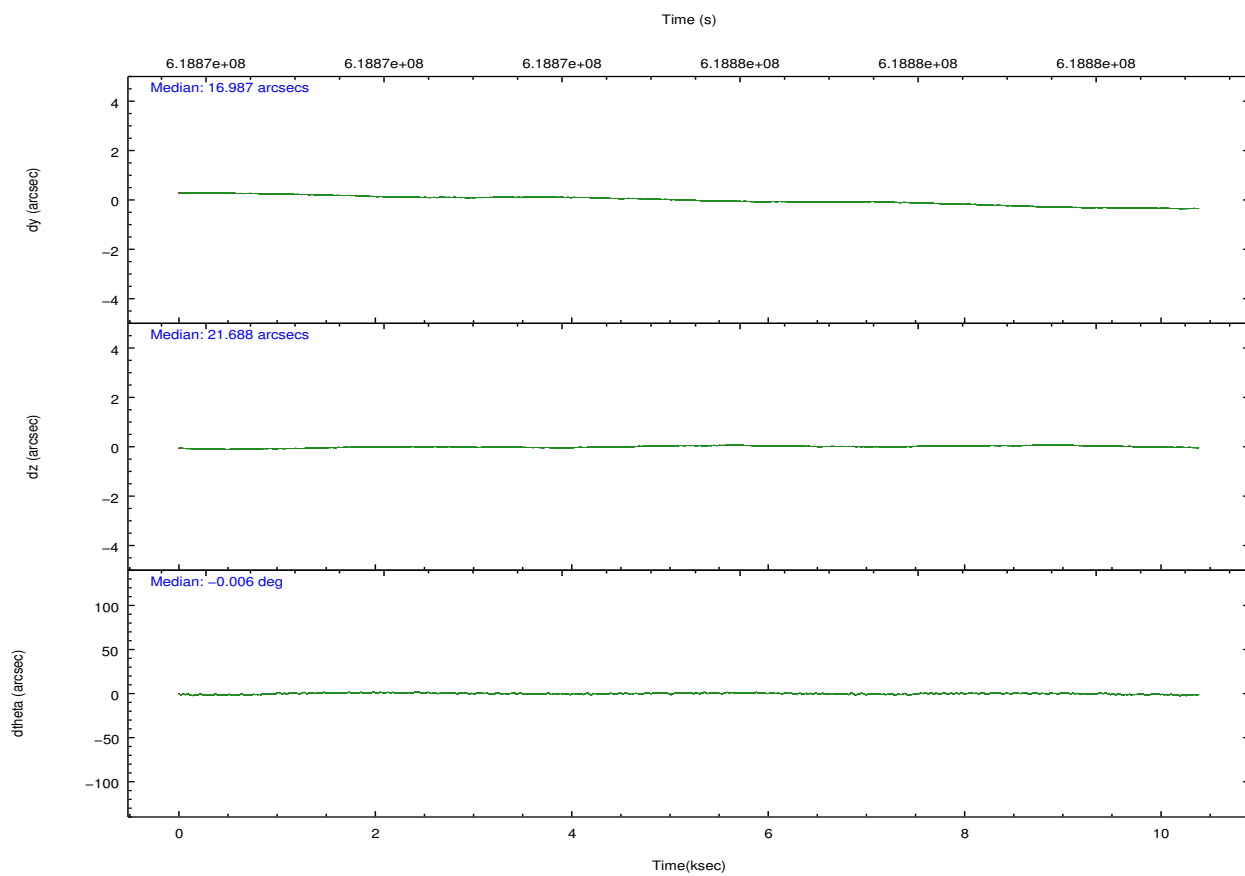
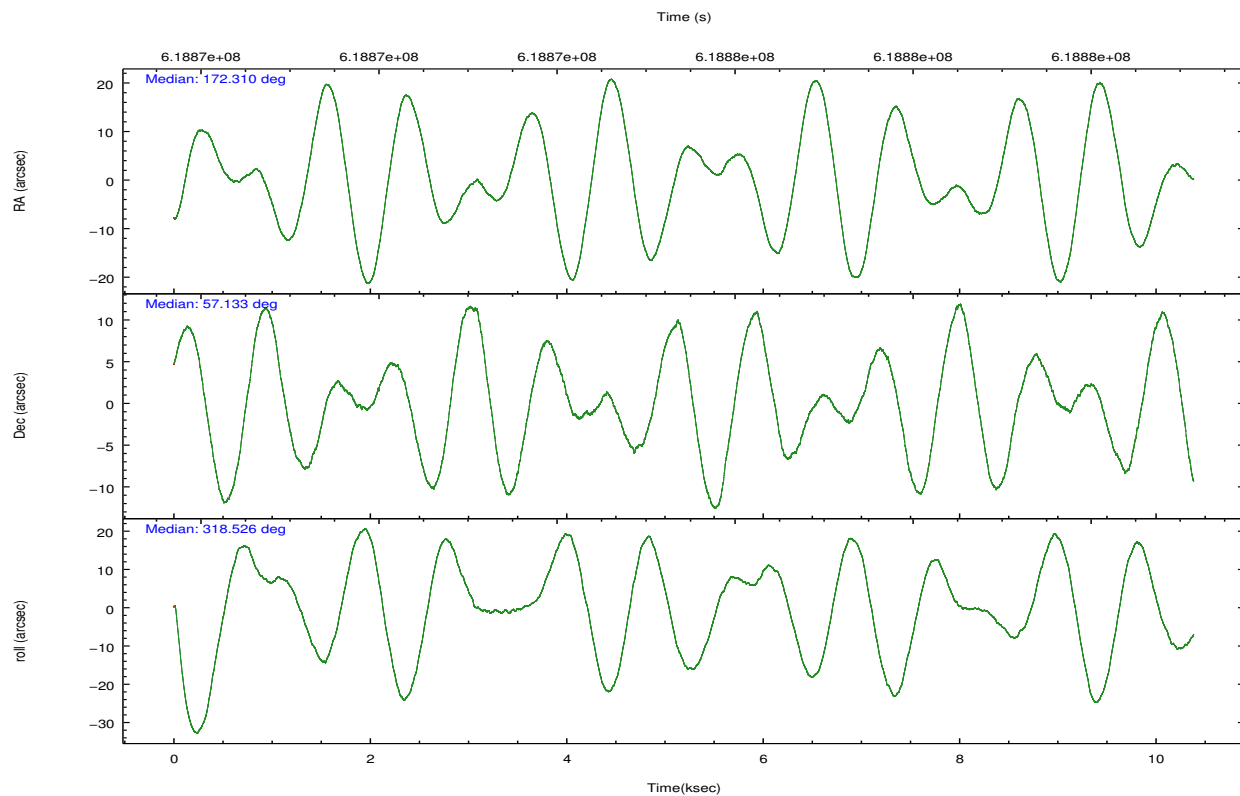
	ccd 2	ccd 3	ccd 6	ccd 7
grade 0 events	2882	2967	2653	3518
	3%	4%	3%	3%
grade 1 events	41	40	29	124
	0%	0%	0%	0%
grade 2 events	2012	1641	1943	8707
	2%	2%	2%	9%
grade 3 events	783	753	814	3298
	1%	1%	1%	3%
grade 4 events	819	792	850	3342
	1%	1%	1%	3%
grade 5 events	2820	3415	3534	9371
	3%	5%	4%	10%
grade 6 events	1467	1611	1886	21816
	1%	2%	2%	23%
grade 7 events	63101	55365	60158	42695
	85%	83%	83%	45%

2.2 Compared Parameters

Parameter	Planned	Actual	Parameter	Planned	Actual
Instrument	ACIS	ACIS	Obspar format version number	7	7
Detector	ACIS-2367	ACIS-2367	Obspar file type	PREDICTED	ACTUAL
Grating	NONE	NONE	Obspar update status	NONE	UPDATED
Data mode	FAINT	FAINT	Number of optional ACIS chips dropped	0	0
Observation mode	POINTING	POINTING	On-chip summing requested	N	N
[deg] Pointing RA	172.260856	172.3105674359077	Subarray requested	NONE	NONE
[deg] Pointing Dec	57.137798	57.13274580506567	Alternating exposures requested	N	N
[deg] Pointing Roll	318.410035	318.5249198138833	[s] Primary exposure time	0.000000	3.1
[mm] SIM focus pos	-0.684267	-0.6828225247311905			
[mm] SIM defocus	0	0.001444936568705701			
[mm] SIM translation stage pos	-190.132523	-190.1425803651734			
[mm] SIM translation stage offset	0	0.01005778216563158			
[s] Observation start time (MET)	618870403.184000	618869184.76969			
Observation start date	2017-08-11T20:25:34	2017-08-11T20:06:24			
[s] Observation end time (MET)	618880603.184000	618881486.82041			
Observation end date	2017-08-11T23:15:34	2017-08-11T23:31:26			
Read mode	TIMED	TIMED			

2.3 Aspect



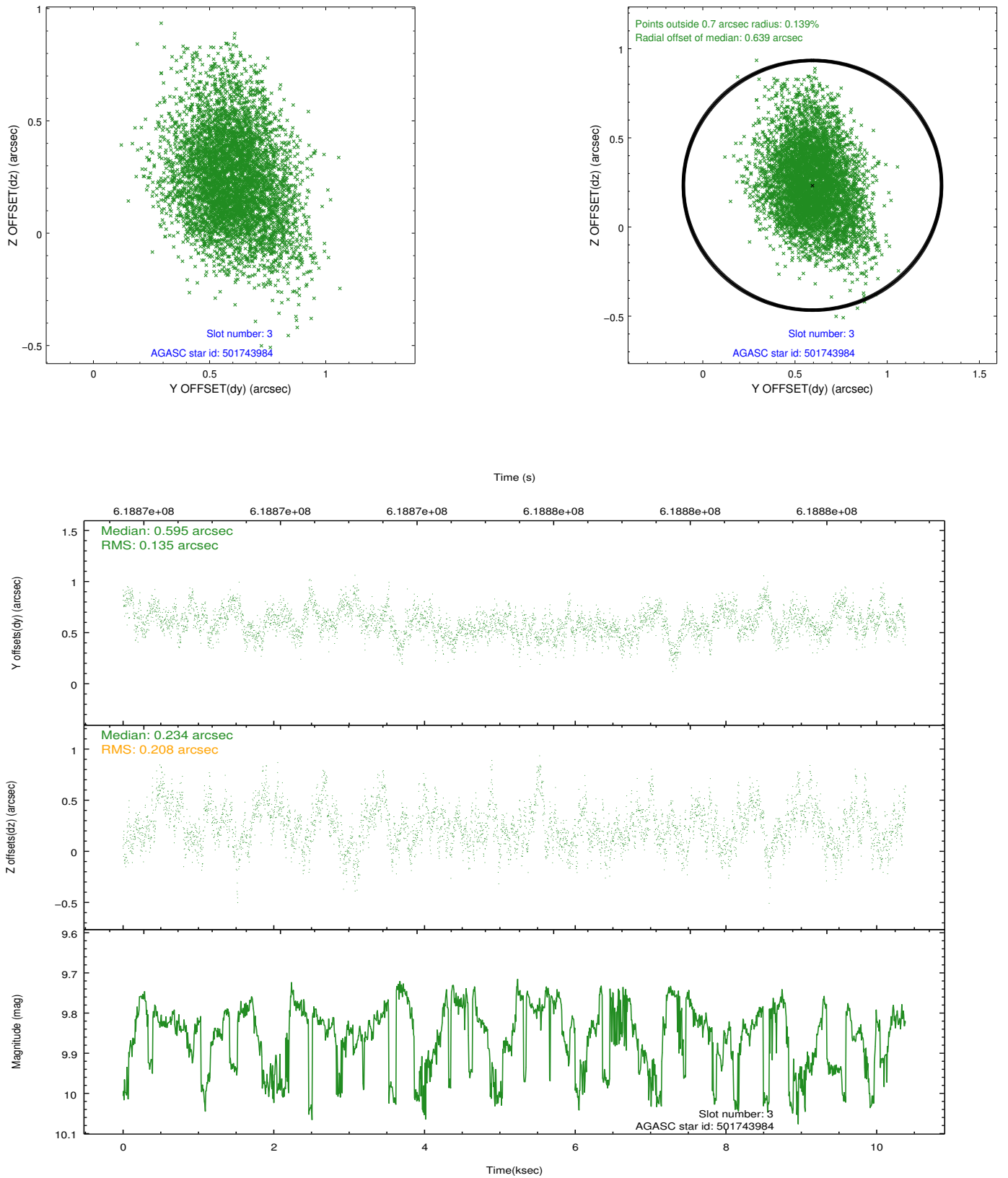


Slot Statistics

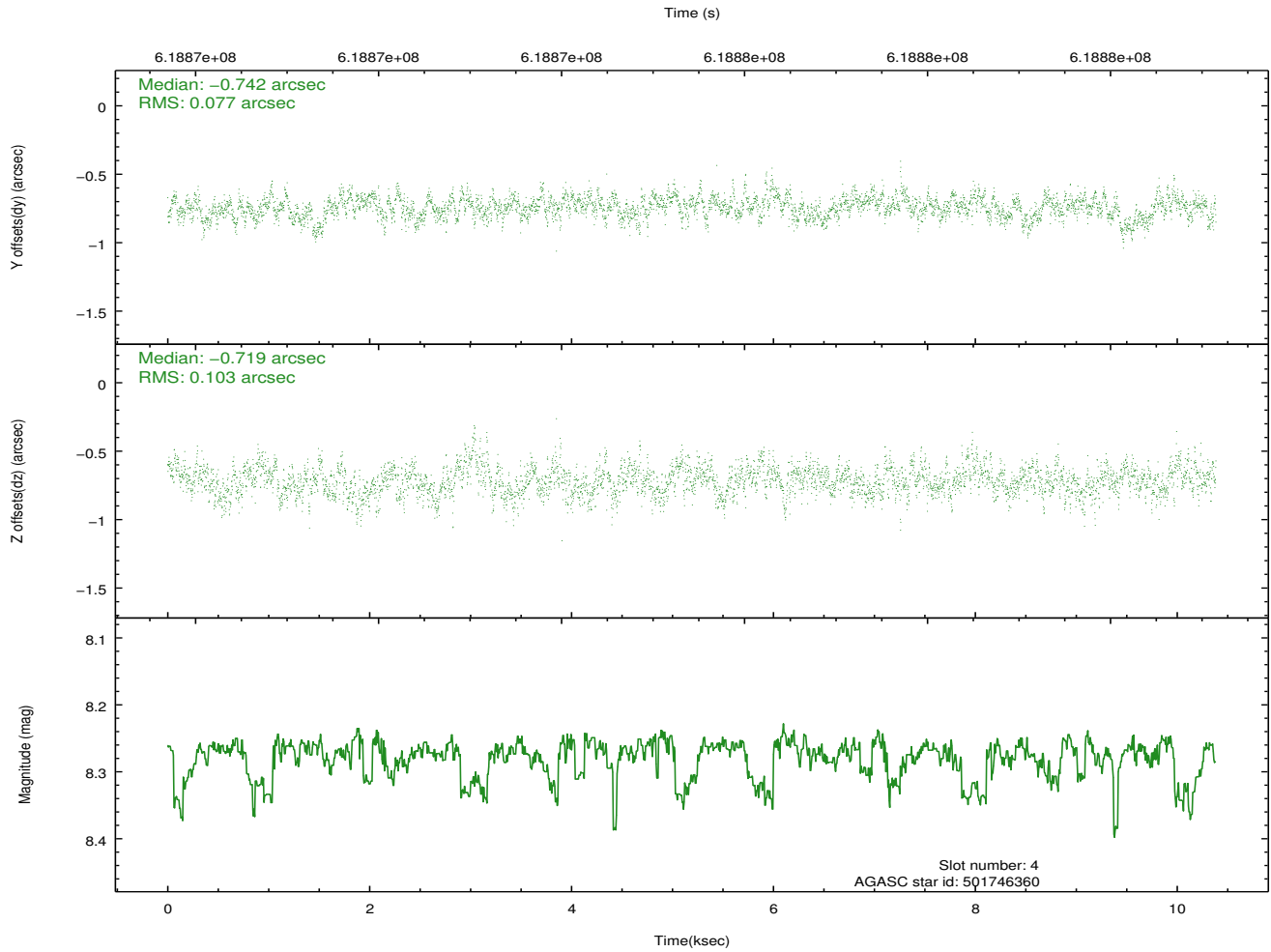
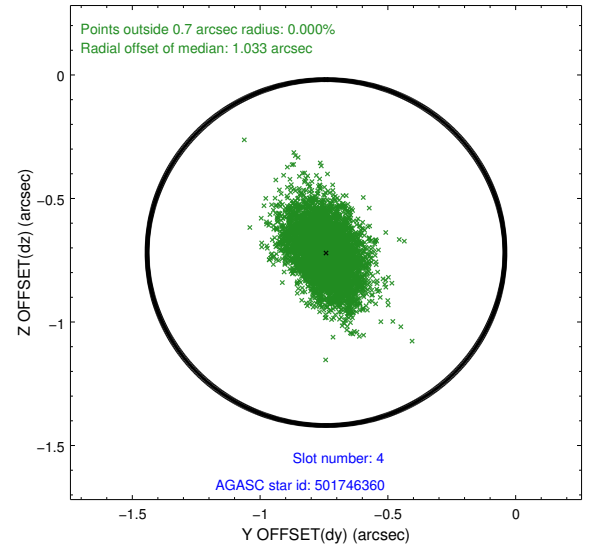
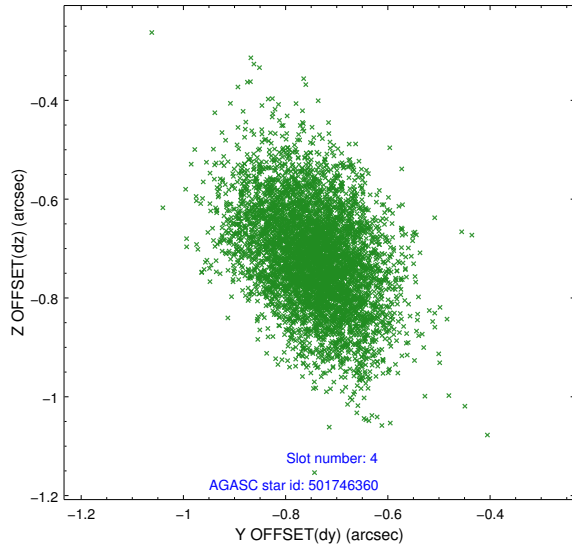
slot	status	used	id	mag	n_pts	med_dy	med_dz	dr1	dr2	ra	dec	mean_y	mean_z
0	FID		ACIS-S-4	7.13	2533	0.343	0.009	0.011	0.018	0.000000	0.000000	2143.70	165.54
1	FID		ACIS-S-5	7.14	2533	-0.393	-0.001	0.014	0.024	0.000000	0.000000	-1822.59	158.94
2	FID		ACIS-S-6	7.28	2533	0.022	0.006	0.008	0.013	0.000000	0.000000	391.06	802.75
3	GUIDE	used	501743984	9.85	5053	0.595	0.234	0.258	0.441	171.294983	56.867094	-782.67	-1980.18
4	GUIDE	used	501746360	8.27	5063	-0.742	-0.719	0.134	0.226	171.888954	56.575508	790.09	-2003.22
5	GUIDE	used	501747008	7.37	5066	0.106	0.559	0.125	0.213	172.678253	56.746380	1550.43	-505.02
6	GUIDE	used	501747640	6.99	5066	-0.219	0.045	0.138	0.234	172.863916	57.134869	885.01	777.89
7	GUIDE	used	502137920	8.85	5062	0.264	-0.130	0.119	0.200	171.918338	57.742059	-1936.64	1191.36

2.4 Star Slots

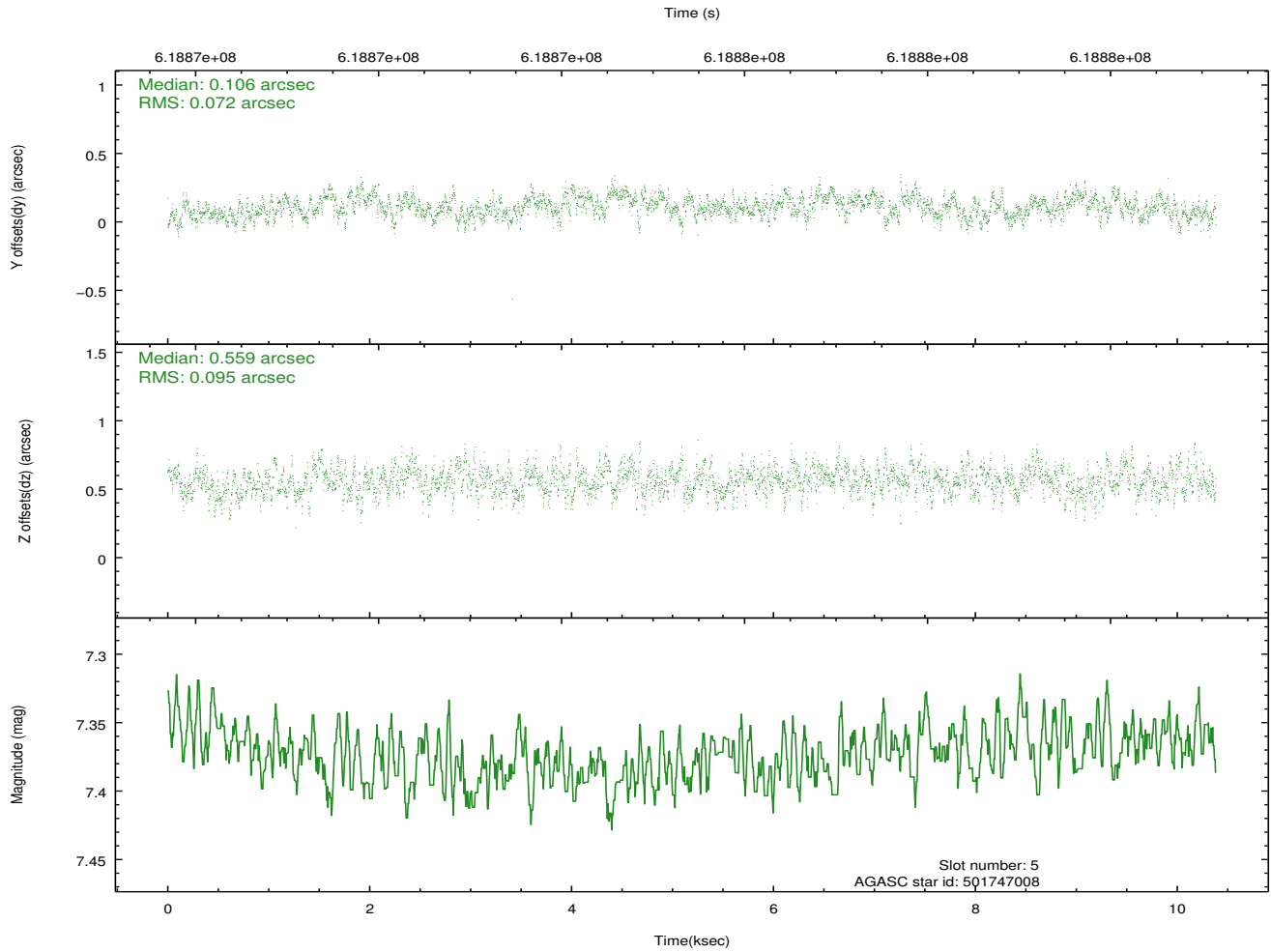
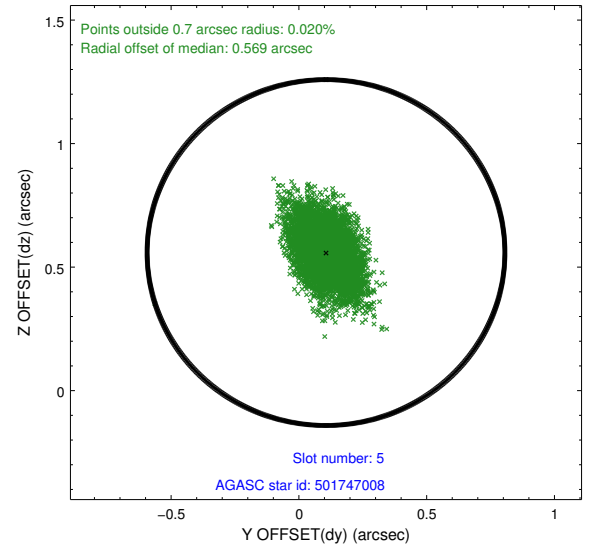
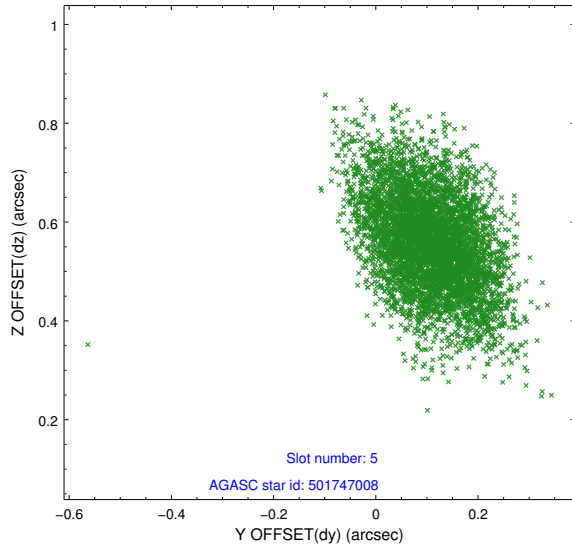
2.4.1 Slot 3



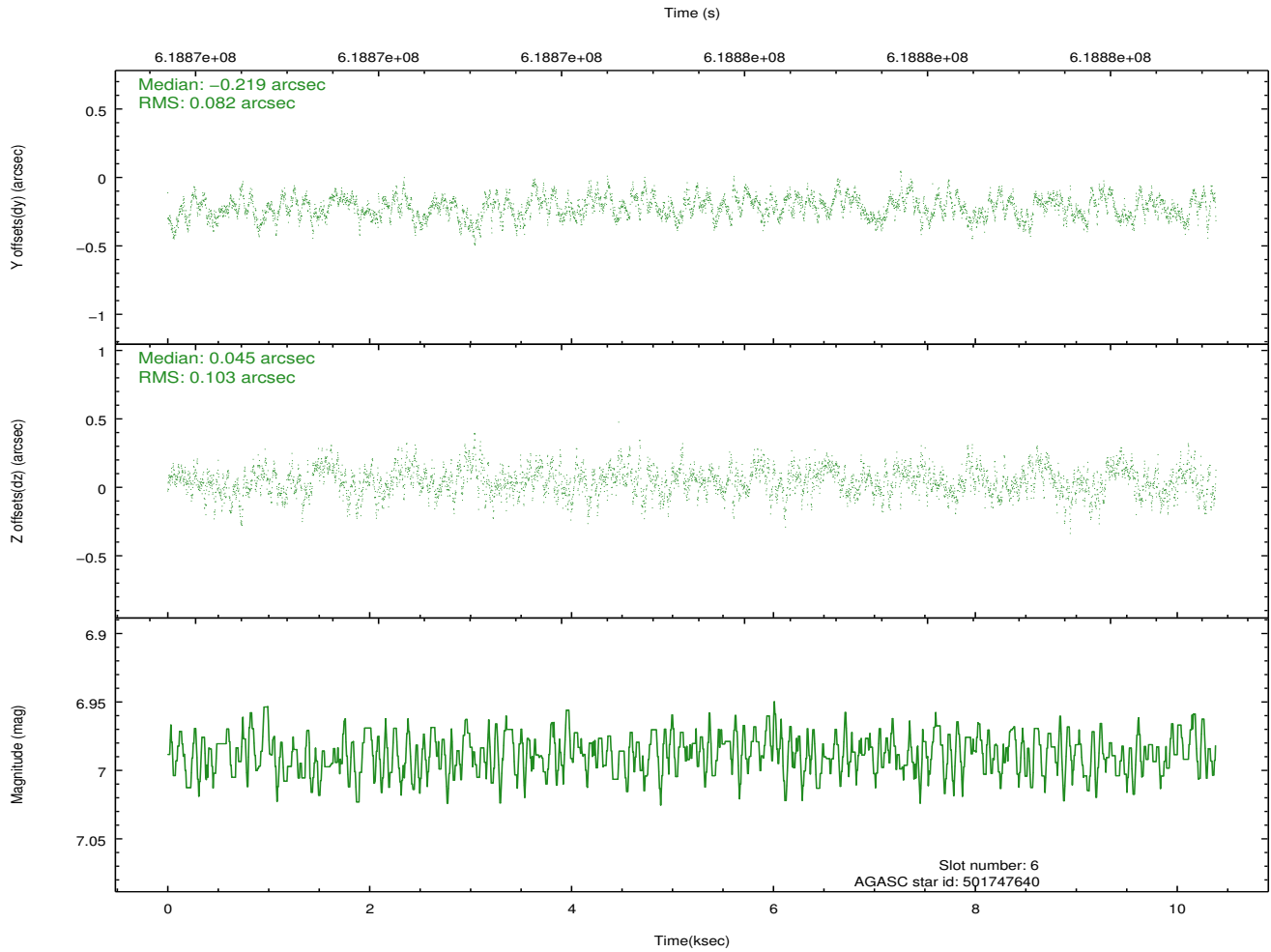
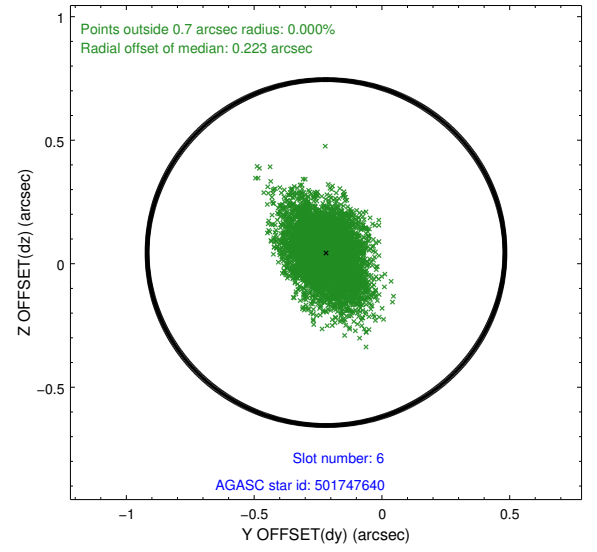
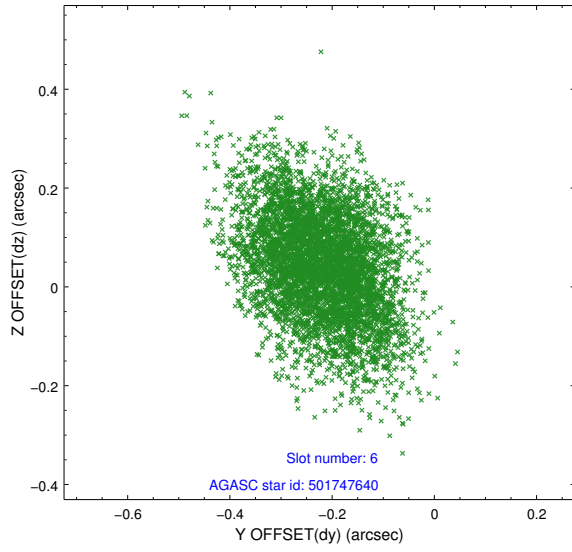
2.4.2 Slot 4



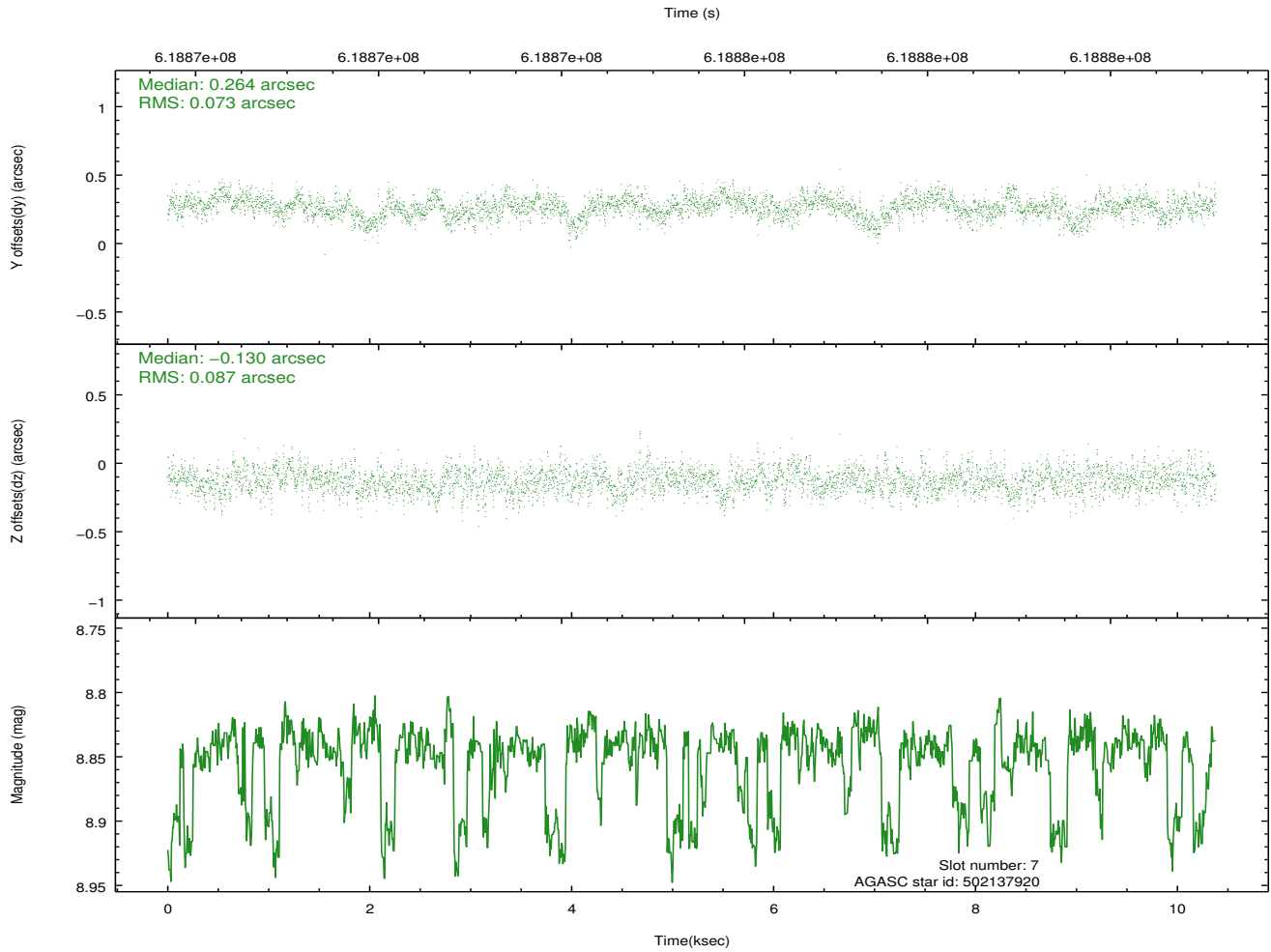
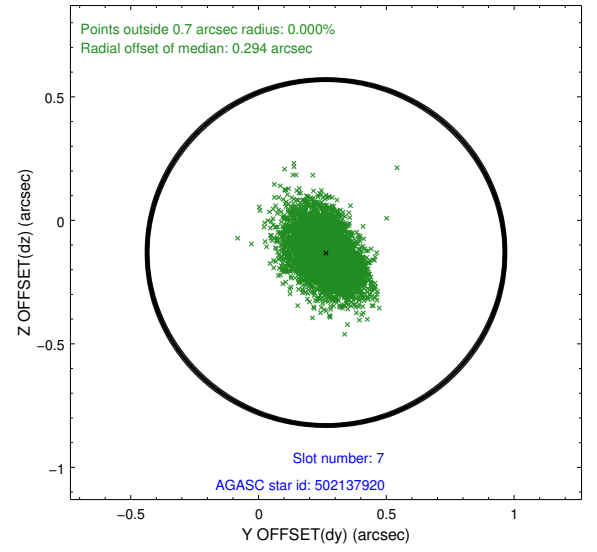
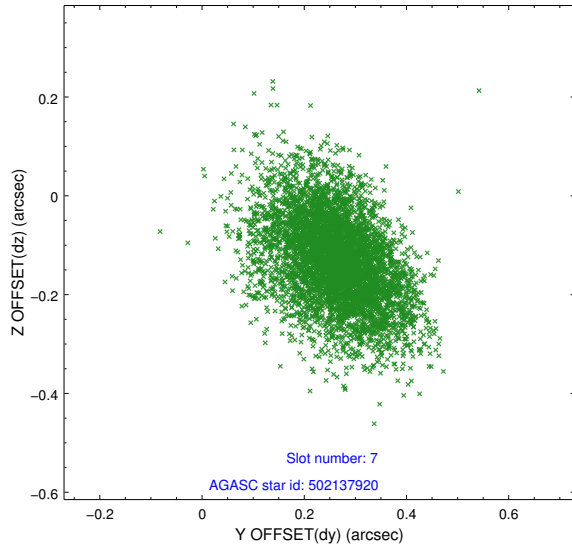
2.4.3 Slot 5



2.4.4 Slot 6

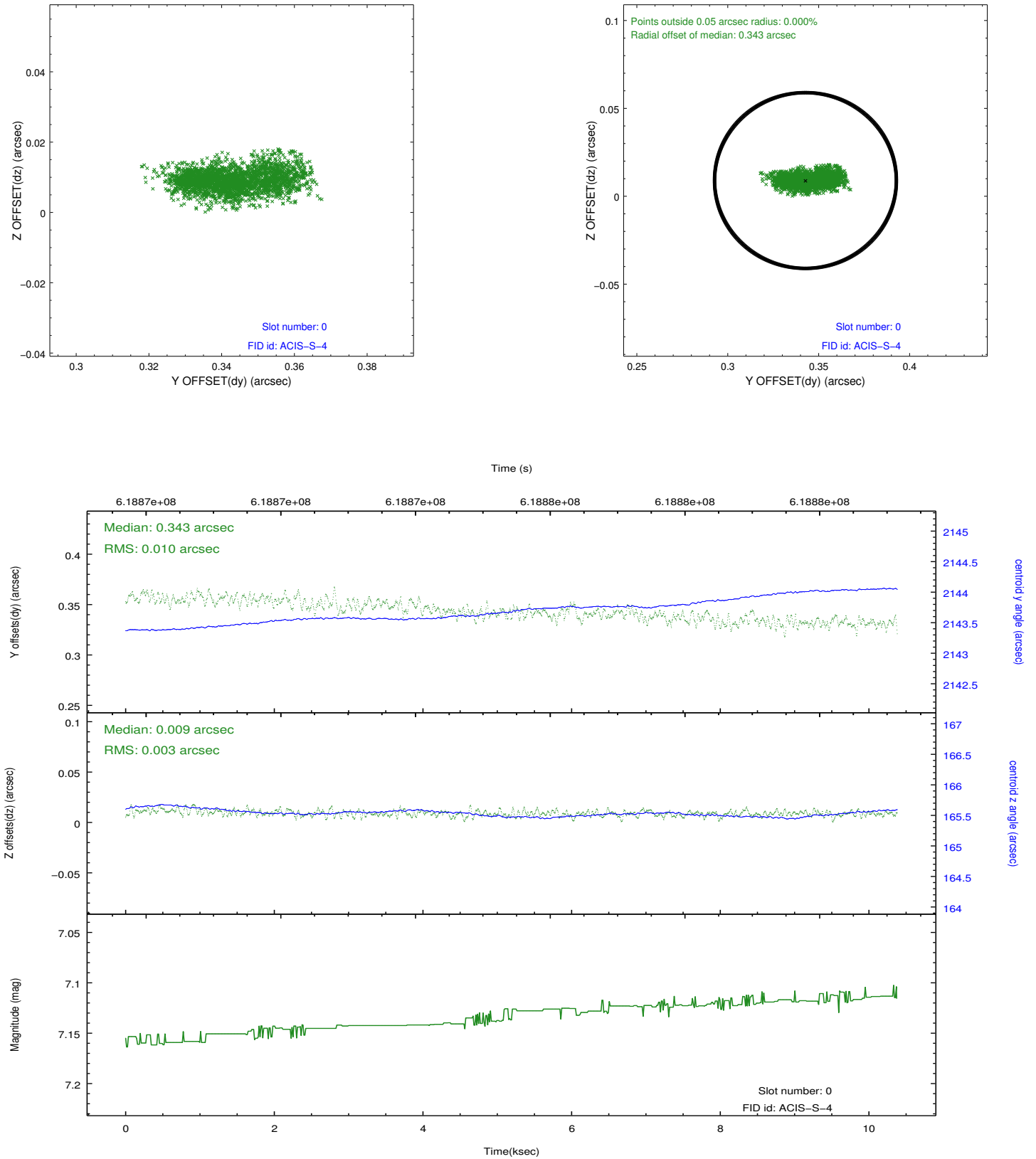


2.4.5 Slot 7

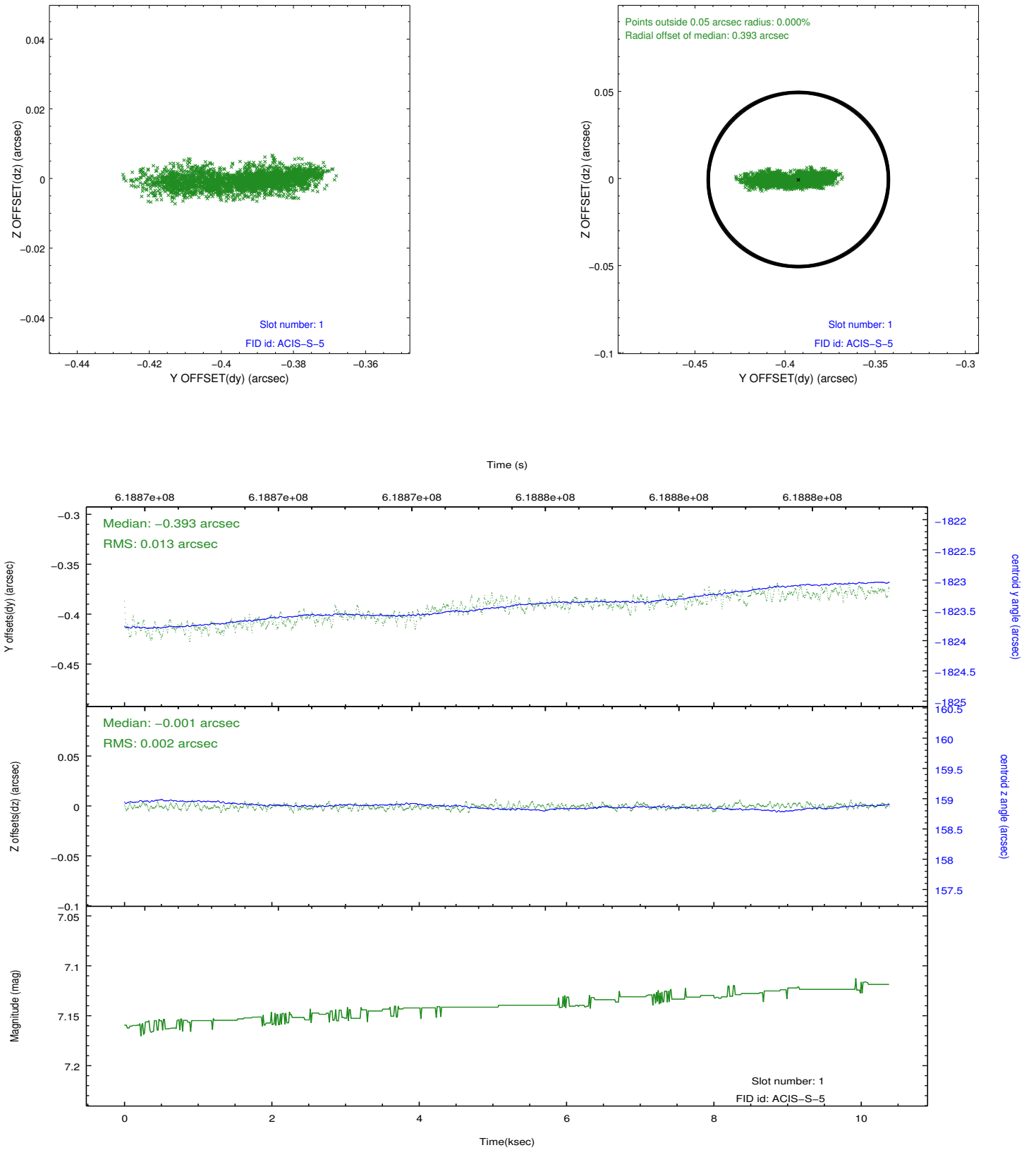


2.5 FID Slots

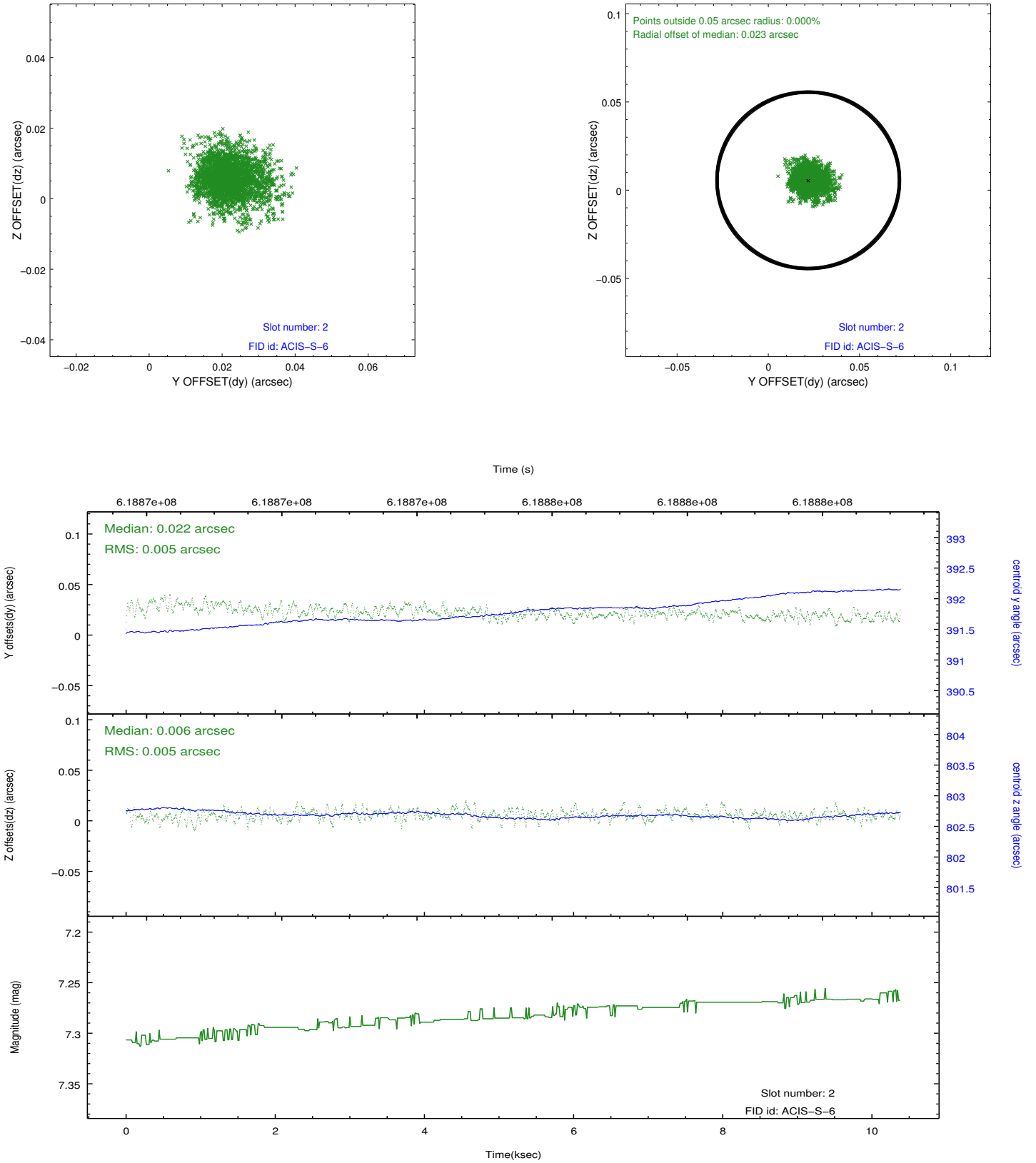
2.5.1 Slot 0



2.5.2 Slot 1



2.5.3 Slot 2



A Summary

A.1 Status

V&V Scientist	Beth Sundheim
V&V Date (YYYY-MM-DD)	2017.08.13
V&V Edition	1
V&V Disposition and Status	OK
V&V Charge Time	10.270300079107

A.2 Comments