

V&V Reference Report

L2 ASCDS Version : 10.5.2

Observation 19319 - L2 Version 1
Chandra X-Ray Center

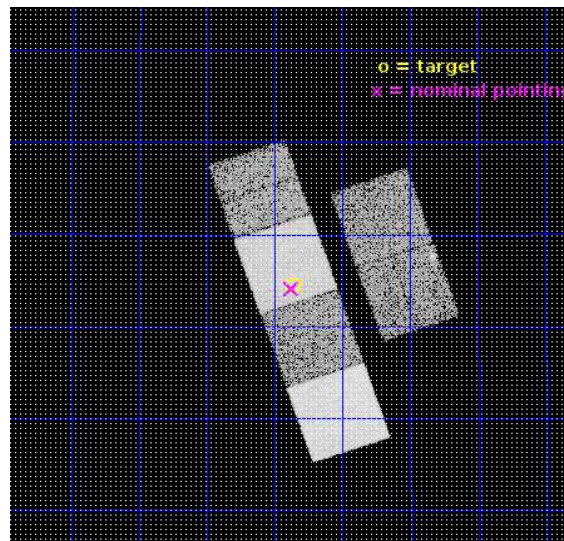
L2 Processing Date : Feb 17 2017

Contents

1	Front	2
2	OBI	3
2.1	OBI	3
2.1.1	Images	3
2.1.2	Bias	3
2.1.3	Parameters	4
2.1.4	Events	4
2.2	Compared Parameters	5
2.3	Aspect	6
2.4	Star Slots	9
2.4.1	Slot 3	9
2.4.2	Slot 4	10
2.4.3	Slot 5	11
2.4.4	Slot 6	12
2.4.5	Slot 7	13
2.5	FID Slots	14
2.5.1	Slot 0	14
2.5.2	Slot 1	15
2.5.3	Slot 2	16
A	Summary	17
A.1	Status	17
A.2	Comments	17

1 Front

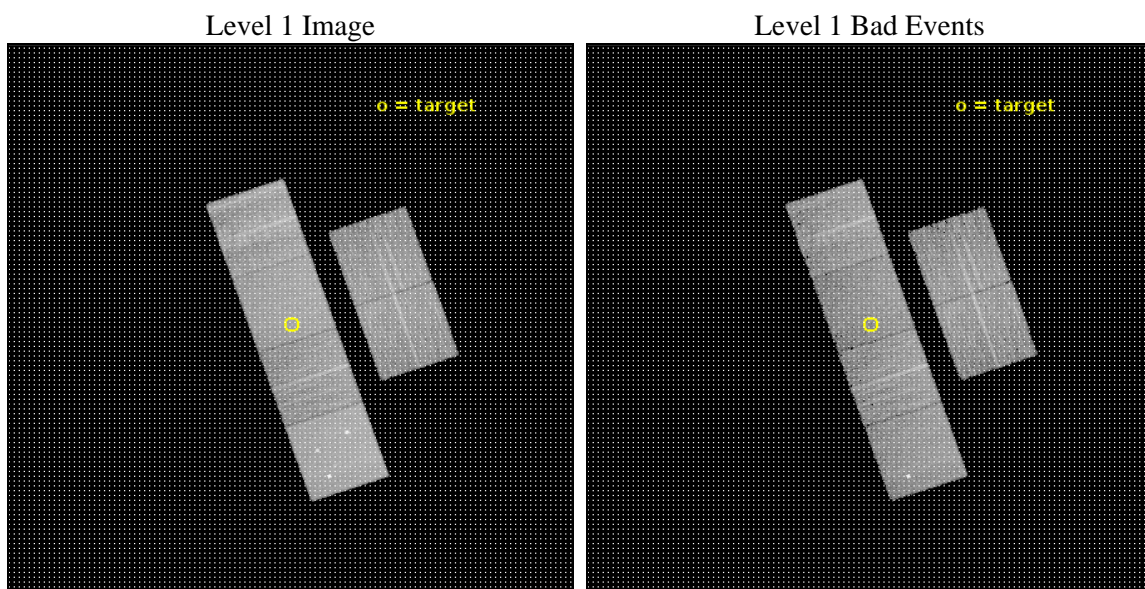
seq_num	601276	Sequence number
obs_id	19319	Observation id
title	A homogeneous view of X-ray halos in massive early-type galaxies	P
observer	Andy Goulding	Principal investigator
object	NGC2672	Source name
dtcycle	0	
cycle	P	events from which exps? Prim/Second/Both
ra_targ	132.34125	Observer's specified target RA [deg]
dec_targ	19.075	Observer's specified target Dec [deg]
ra_nom	132.34435084369	Nominal RA [deg]
dec_nom	19.06867401562	Nominal Dec [deg]
roll_nom	251.10750274549	Nominal Roll [deg]
revision	1	Processing version of data
ontime	11452.80017066	Sum of GTIs [s]
livetime	11307.777918851	Livetime [s]
ontime2	11452.80017066	Sum of GTIs [s]
ontime3	11452.80017066	Sum of GTIs [s]
ontime5	11452.80017066	Sum of GTIs [s]
ontime6	11452.80017066	Sum of GTIs [s]
ontime7	11452.80017066	Sum of GTIs [s]
ontime8	11452.80017066	Sum of GTIs [s]
l2events	136071	Number of level 2 events



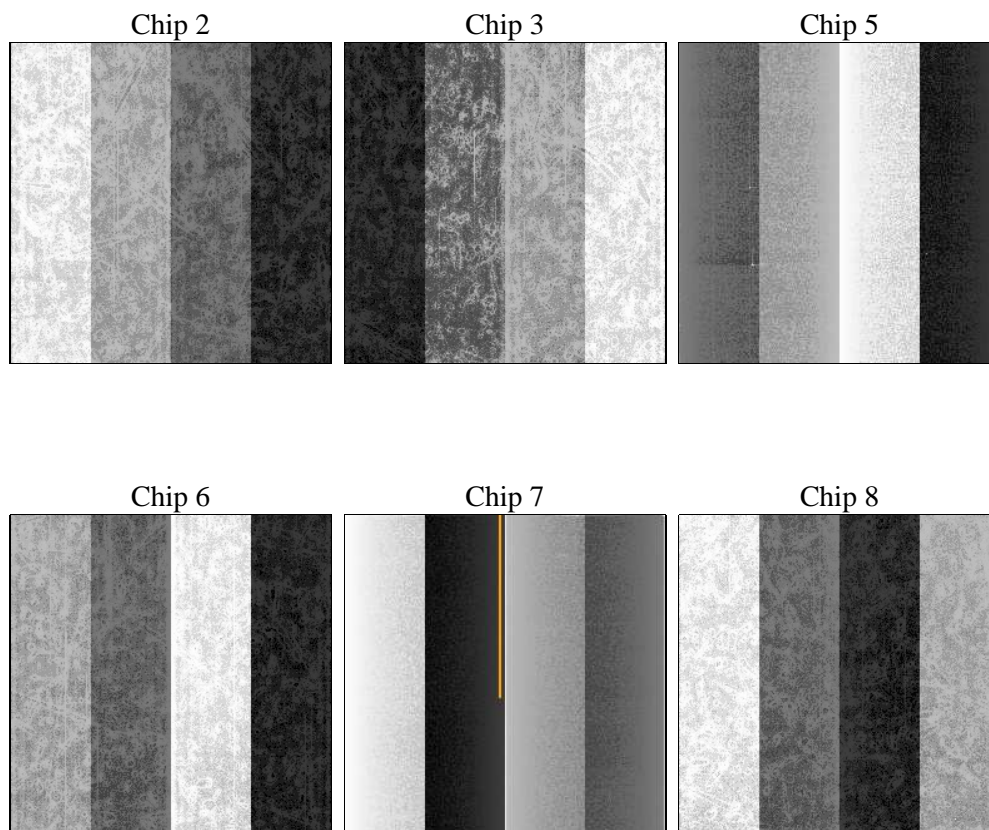
2 OBI

2.1 OBI

2.1.1 Images



2.1.2 Bias



2.1.3 Parameters

obi_num	1	Obi number	sched_exp_time	11500.000000	[s] Scheduled observation exposure time
ascdsver	10.5.2	Processing system revision	ontime	11452.80017066	Sum of GTIs [s]
caldsver	4.7.3	 	ontime2	11452.80017066	Sum of GTIs [s]
date	2017-02-18T03:27:48	Date and time of file creation	ontime3	11452.80017066	Sum of GTIs [s]
revision	1	Processing version of data	ontime5	11452.80017066	Sum of GTIs [s]
			ontime6	11452.80017066	Sum of GTIs [s]
			ontime7	11452.80017066	Sum of GTIs [s]
			ontime8	11452.80017066	Sum of GTIs [s]
			l1events	588445	Number of level 1 events

2.1.4 Events

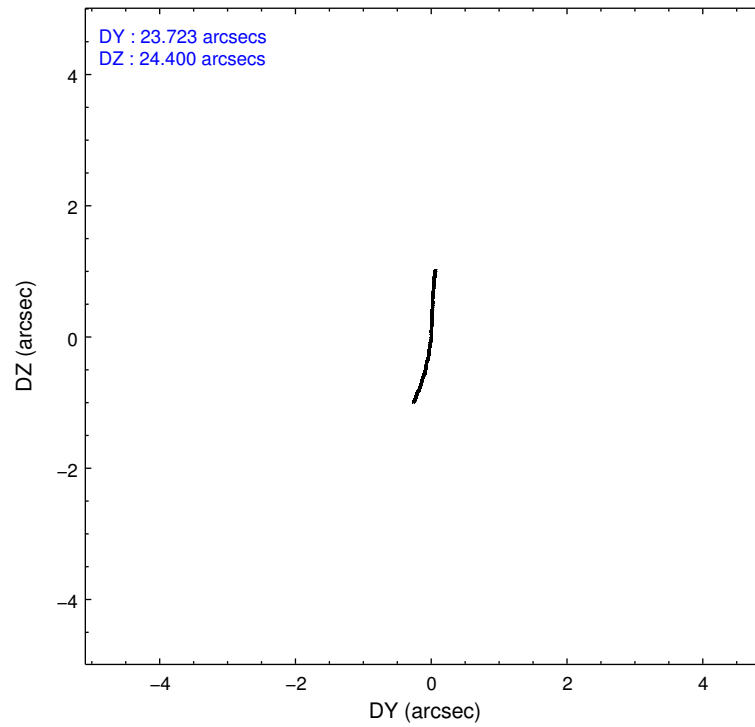
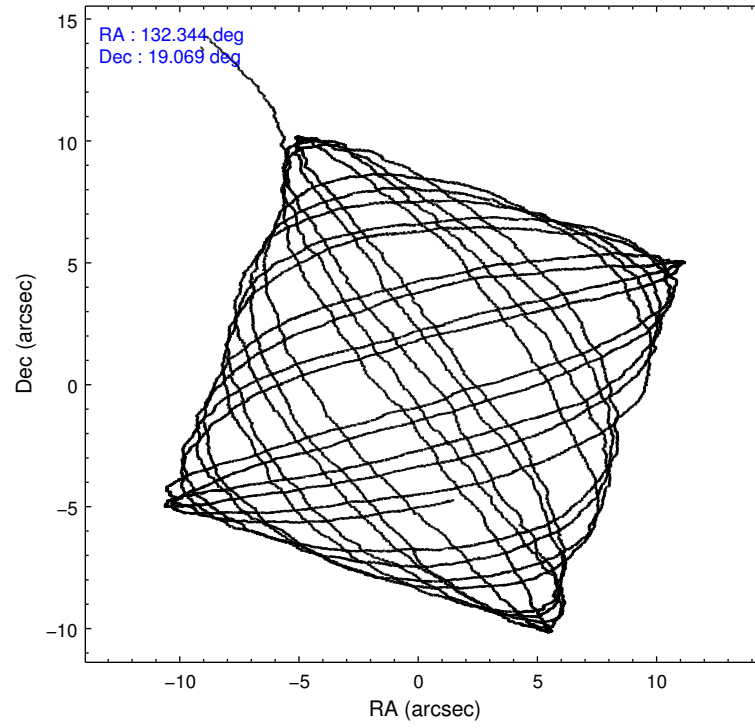
	ccd 2	ccd 3	ccd 5	ccd 6	ccd 7	ccd 8		ccd 2	ccd 3	ccd 5	ccd 6	ccd 7	ccd 8
level 1 events	82141	79155	134172	81234	104270	107473	grade 0 events	3217	2960	7150	3145	4011	8599
rejected events	73031	70804	69617	72075	58236	77712		3%	3%	5%	3%	3%	8%
rejected %	88%	89%	51%	88%	55%	72%	grade 1 events	49	46	267	28	151	81
								0%	0%	0%	0%	0%	0%
							grade 2 events	2257	1905	19700	2119	9888	7278
								2%	2%	14%	2%	9%	6%
							grade 3 events	931	921	2047	869	3804	3156
								1%	1%	1%	1%	3%	2%
							grade 4 events	909	859	1929	920	3841	2988
								1%	1%	1%	1%	3%	2%
							grade 5 events	3375	3816	9304	3864	10705	5720
								4%	4%	6%	4%	10%	5%
							grade 6 events	1802	1711	33769	2111	24516	7755
								2%	2%	25%	2%	23%	7%
							grade 7 events	69601	66937	60006	68178	47354	71896
								84%	84%	44%	83%	45%	66%

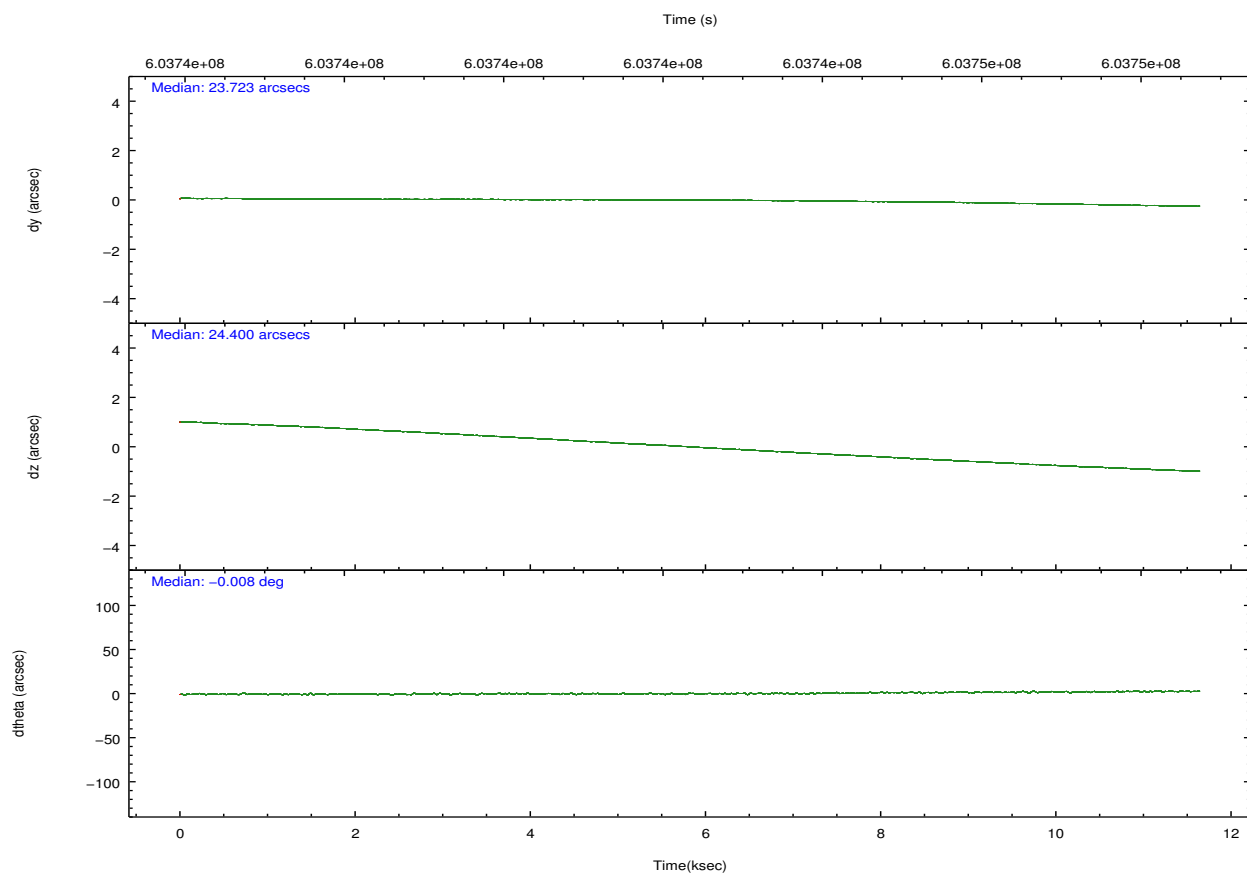
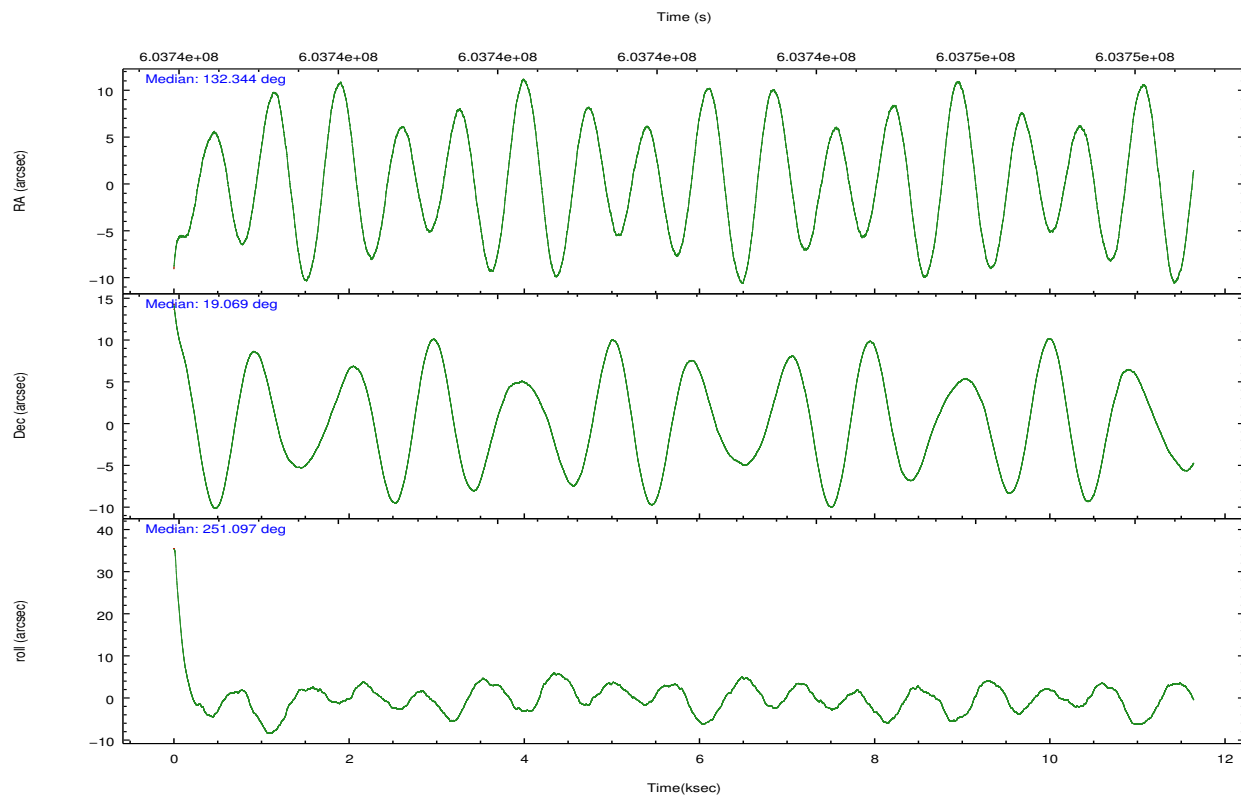
2.2 Compared Parameters

Parameter	Planned	Actual
Instrument	ACIS	ACIS
Detector	ACIS-235678	ACIS-235678
Grating	NONE	NONE
Data mode	VFAINT	VFAINT
Observation mode	POINTING	POINTING
[deg] Pointing RA	132.338419	132.3443508436895
[deg] Pointing Dec	19.095550	19.06867401562025
[deg] Pointing Roll	250.952775	251.1075027454918
[mm] SIM focus pos	-0.684267	-0.6828225247311905
[mm] SIM defocus	0	0.001444936568705701
[mm] SIM translation stage pos	-190.132523	-190.1400660498719
[mm] SIM translation stage offset	0	0.00754346686406393
[s] Observation start time (MET)	603736646.184000	603735389.4519399
Observation start date	2017-02-17T16:36:17	2017-02-17T16:16:29
[s] Observation end time (MET)	603748146.184000	603749663.09027
Observation end date	2017-02-17T19:47:57	2017-02-17T20:14:23
Read mode	TIMED	TIMED

Parameter	Planned	Actual
Obspar format version number	7	7
Obspar file type	PREDICTED	ACTUAL
Obspar update status	NONE	UPDATED
CCD I0 on	N	N
CCD I1 on	N	N
CCD I2 on	O1	Y
CCD I3 on	O2	Y
CCD S0 on	N	N
CCD S1 on	Y	Y
CCD S2 on	Y	Y
CCD S3 on	Y	Y
CCD S4 on	Y	Y
CCD S5 on	N	N
Number of optional ACIS chips dropped	0	0
On-chip summing requested	N	N
Subarray requested	NONE	NONE
Alternating exposures requested	N	N
[s] Primary exposure time	0.000000	3.2

2.3 Aspect



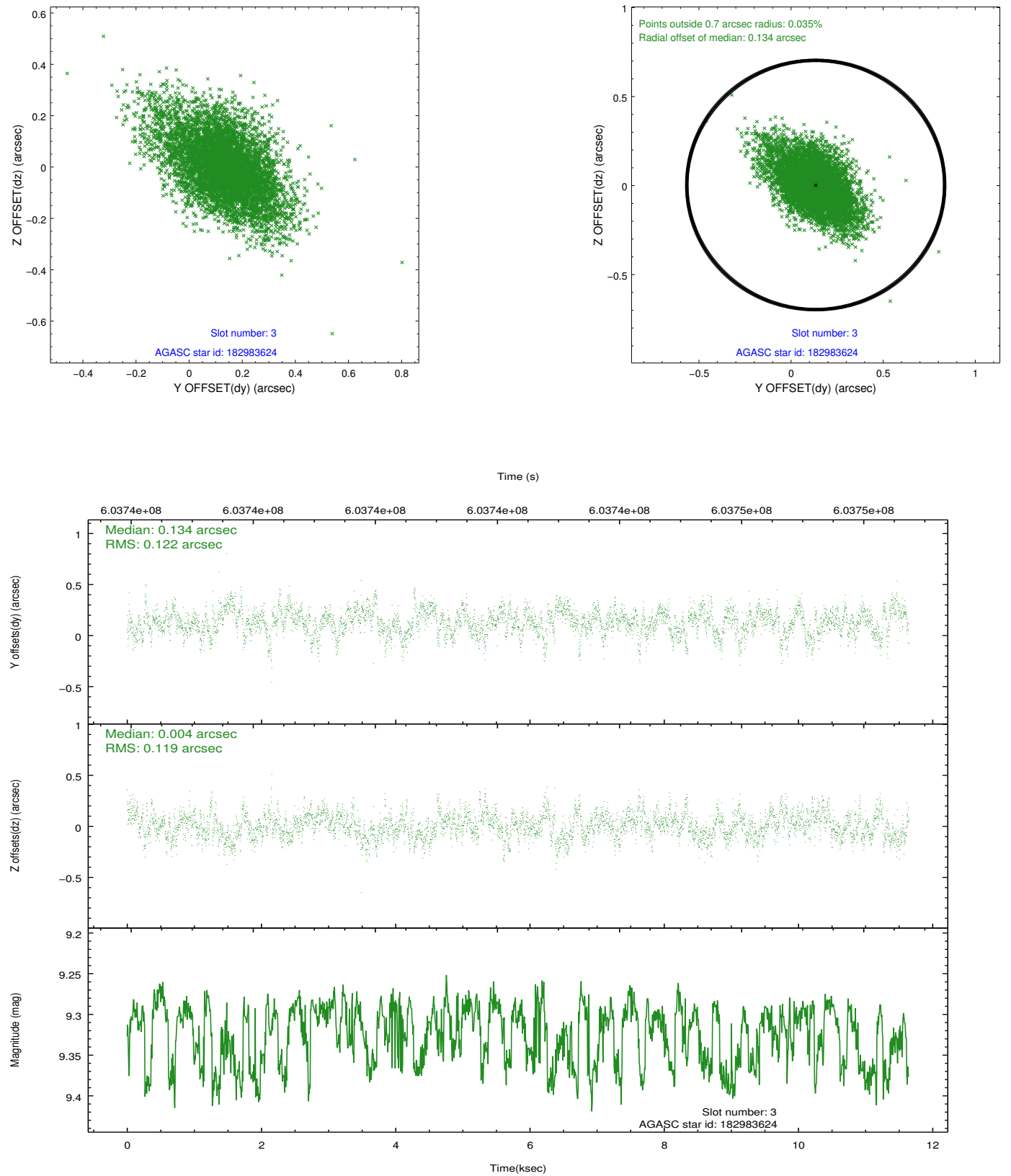


Slot Statistics

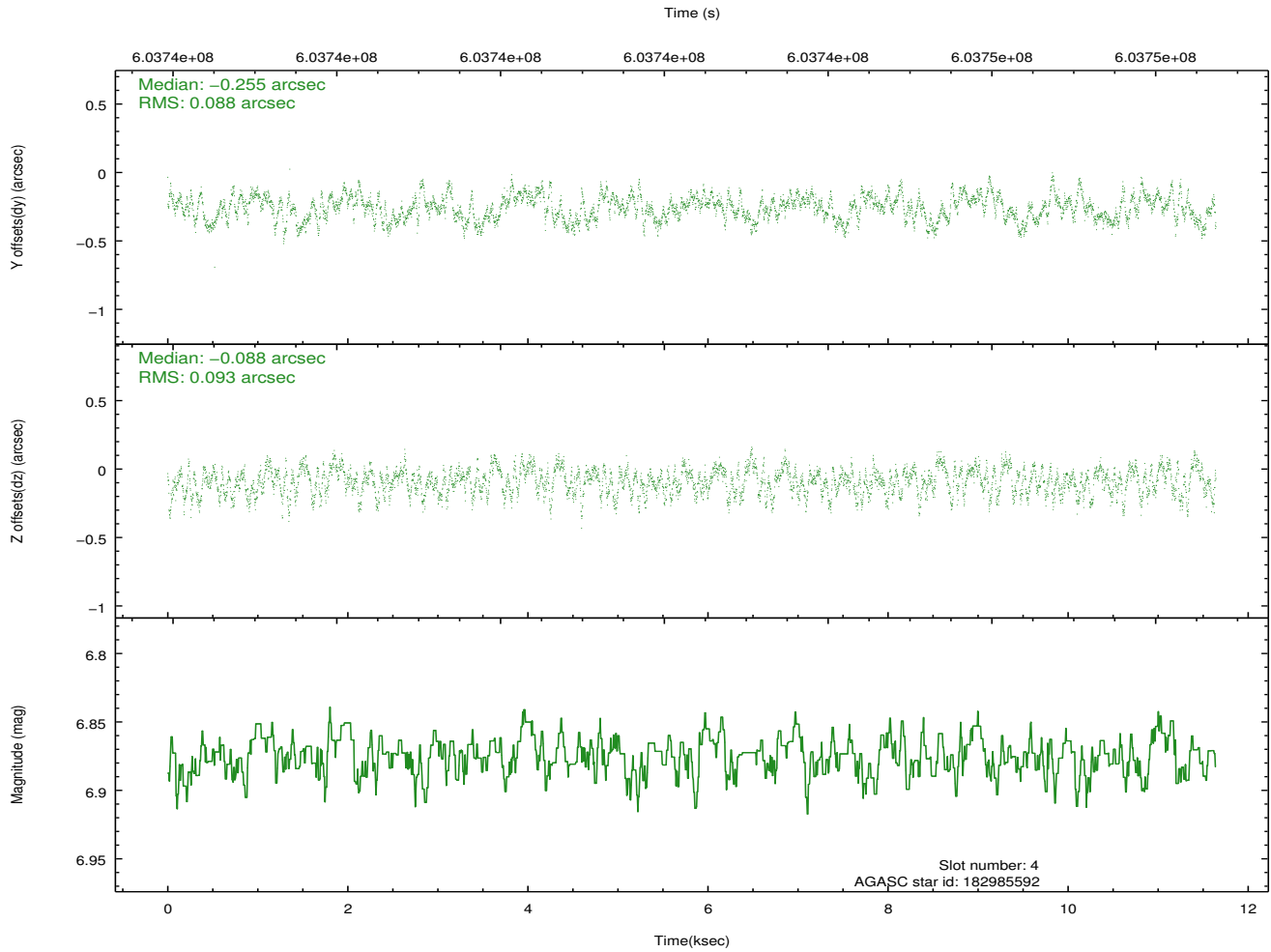
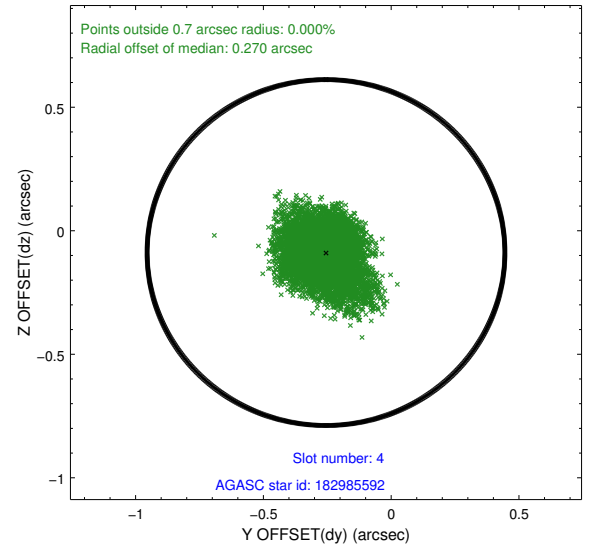
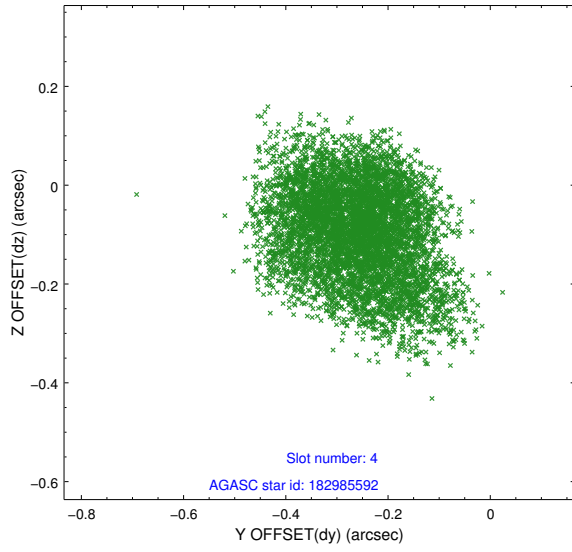
slot	status	used	id	mag	n_pts	med_dy	med_dz	dr1	dr2	ra	dec	mean_y	mean_z
0	FID		ACIS-S-1	7.04	2840	0.068	-0.022	0.027	0.036	0.000000	0.000000	919.31	-1741.65
1	FID		ACIS-S-5	7.09	2840	-0.323	-0.008	0.019	0.038	0.000000	0.000000	-1829.94	155.34
2	FID		ACIS-S-6	7.22	2840	0.232	0.042	0.042	0.053	0.000000	0.000000	384.42	799.95
3	GUIDE	used	182983624	9.32	5670	0.134	0.004	0.174	0.311	131.638640	18.760968	1913.59	-1863.10
4	GUIDE	used	182985592	6.87	5680	-0.255	-0.088	0.139	0.215	132.688010	18.832182	506.82	1434.93
5	GUIDE	used	182985960	8.95	5669	0.088	0.261	0.140	0.238	133.083410	19.350776	-1699.52	2090.94
6	GUIDE	used	182991352	8.83	5666	0.113	0.075	0.135	0.222	132.561076	19.276214	-861.85	502.75
7	GUIDE	used	182992064	8.35	5677	-0.073	-0.247	0.114	0.189	133.014881	18.894292	-71.11	2413.20

2.4 Star Slots

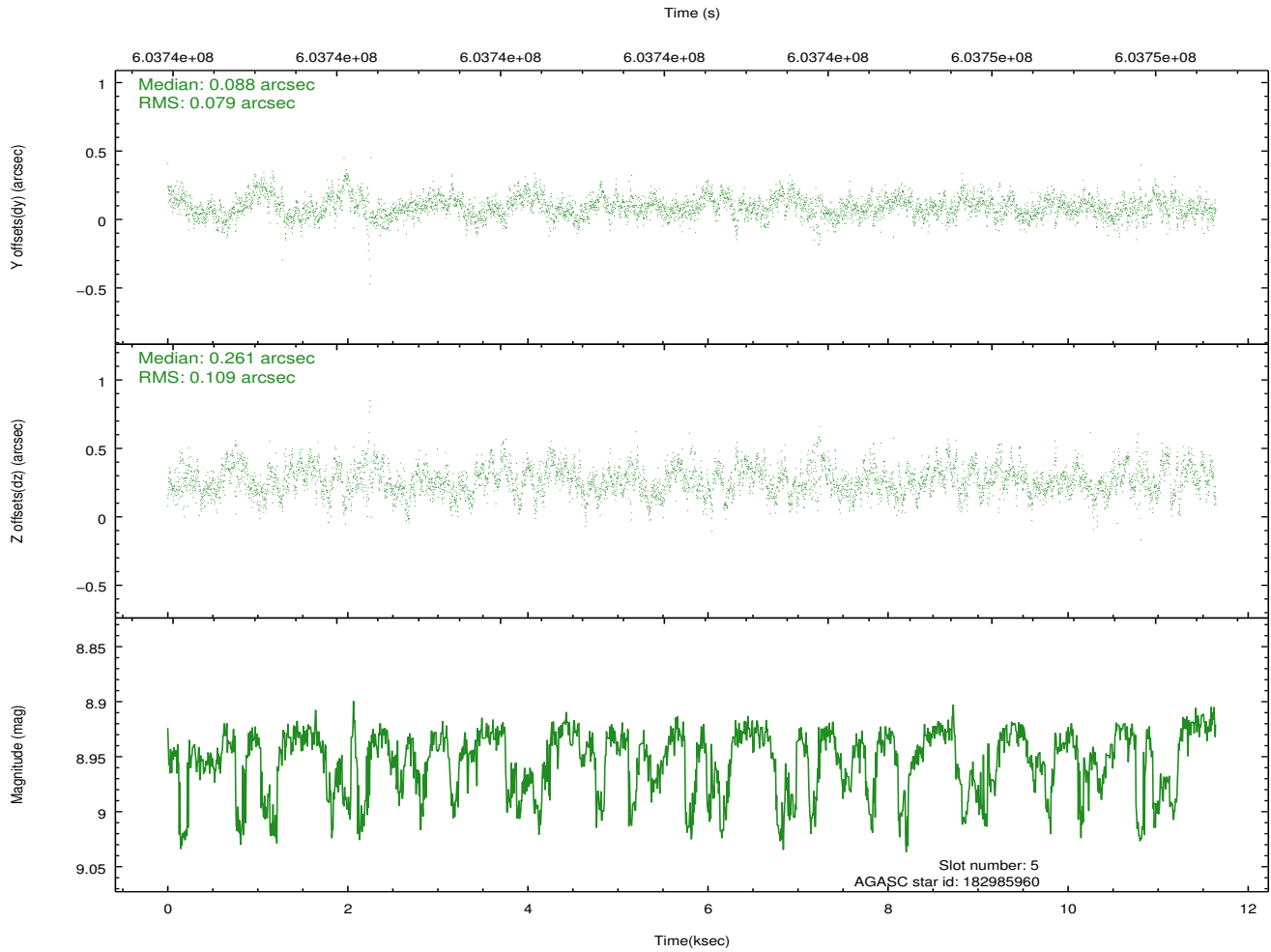
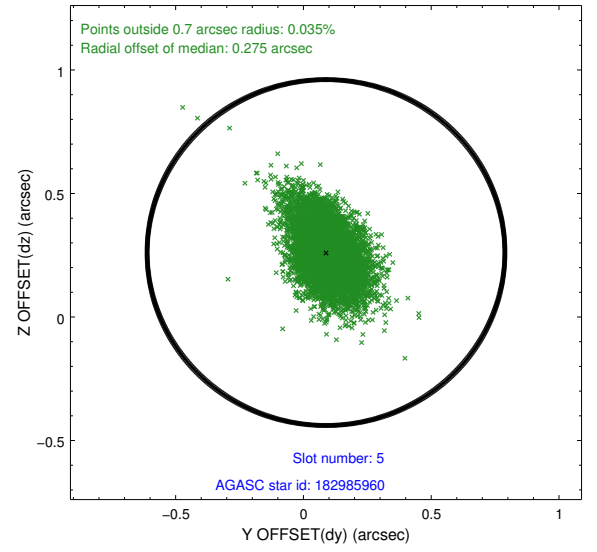
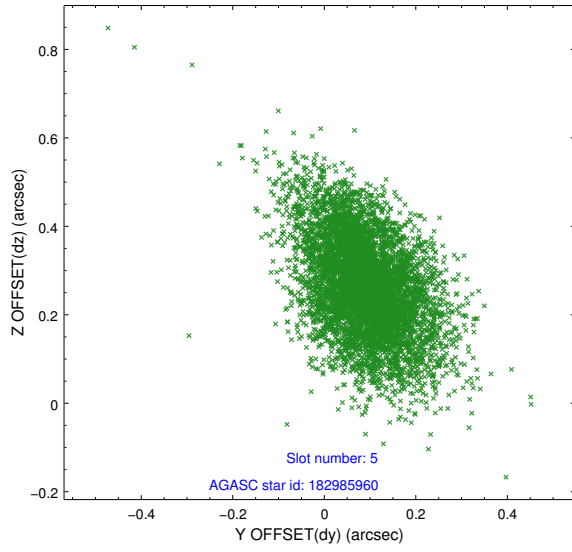
2.4.1 Slot 3



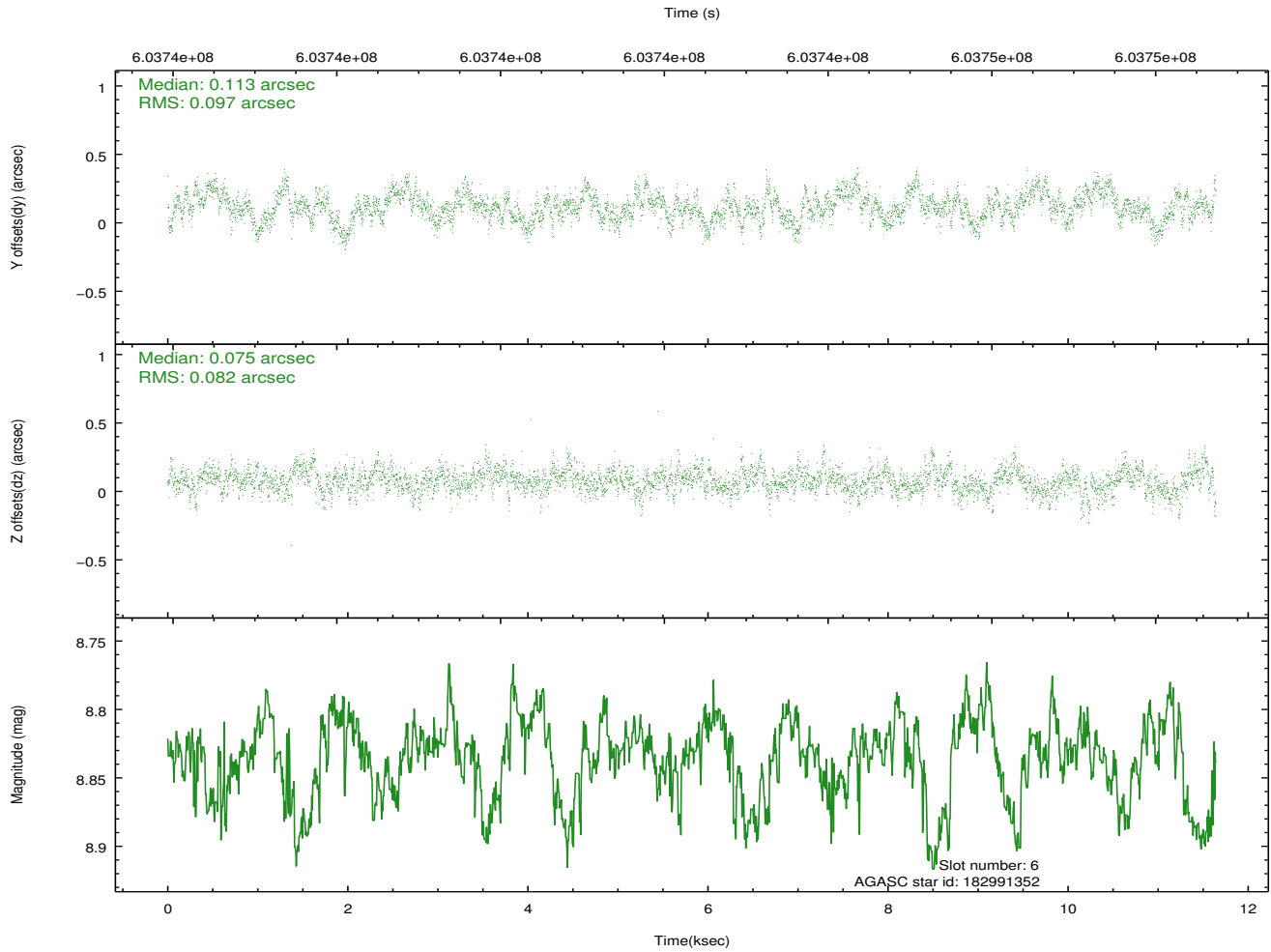
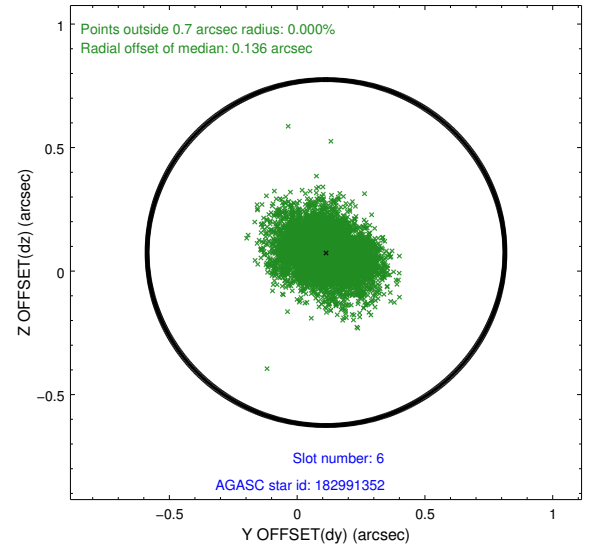
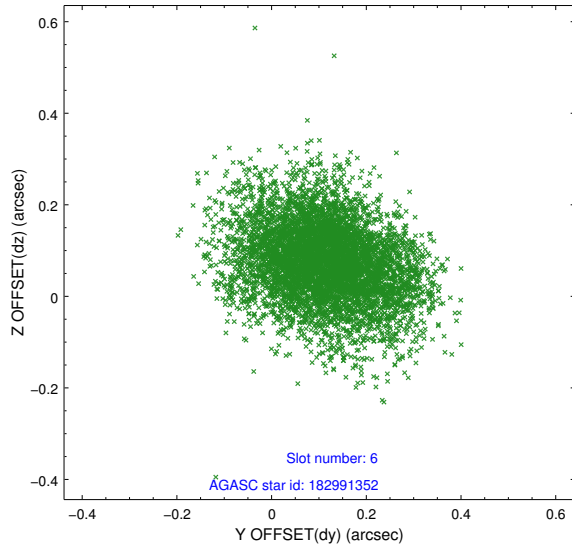
2.4.2 Slot 4



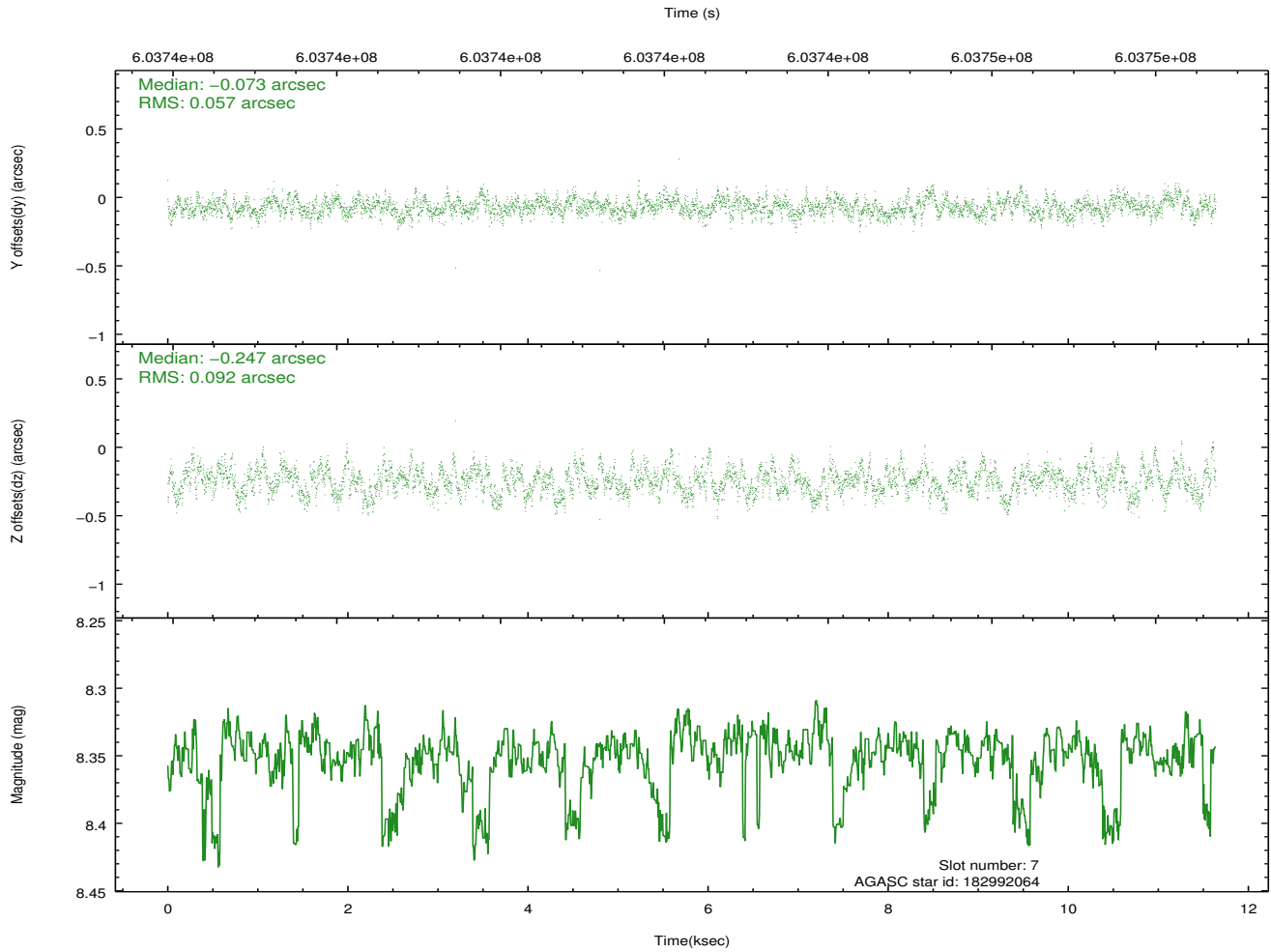
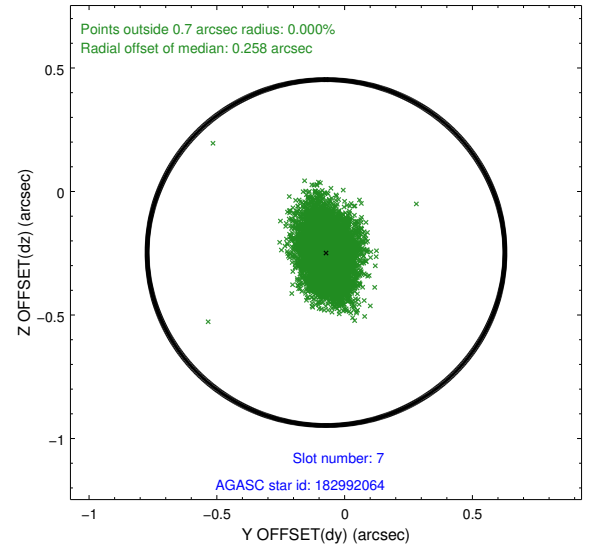
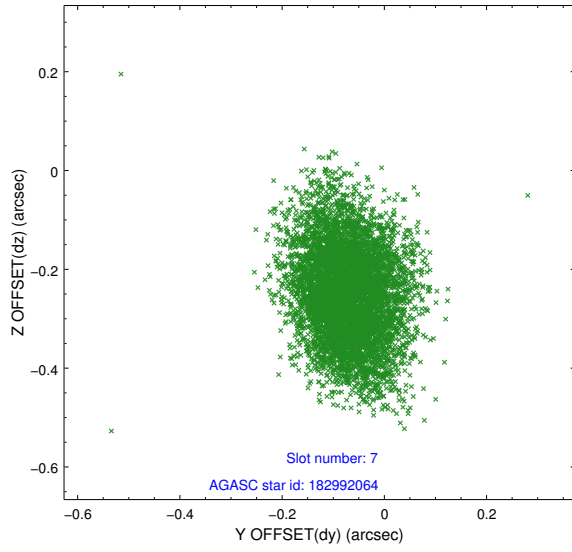
2.4.3 Slot 5



2.4.4 Slot 6

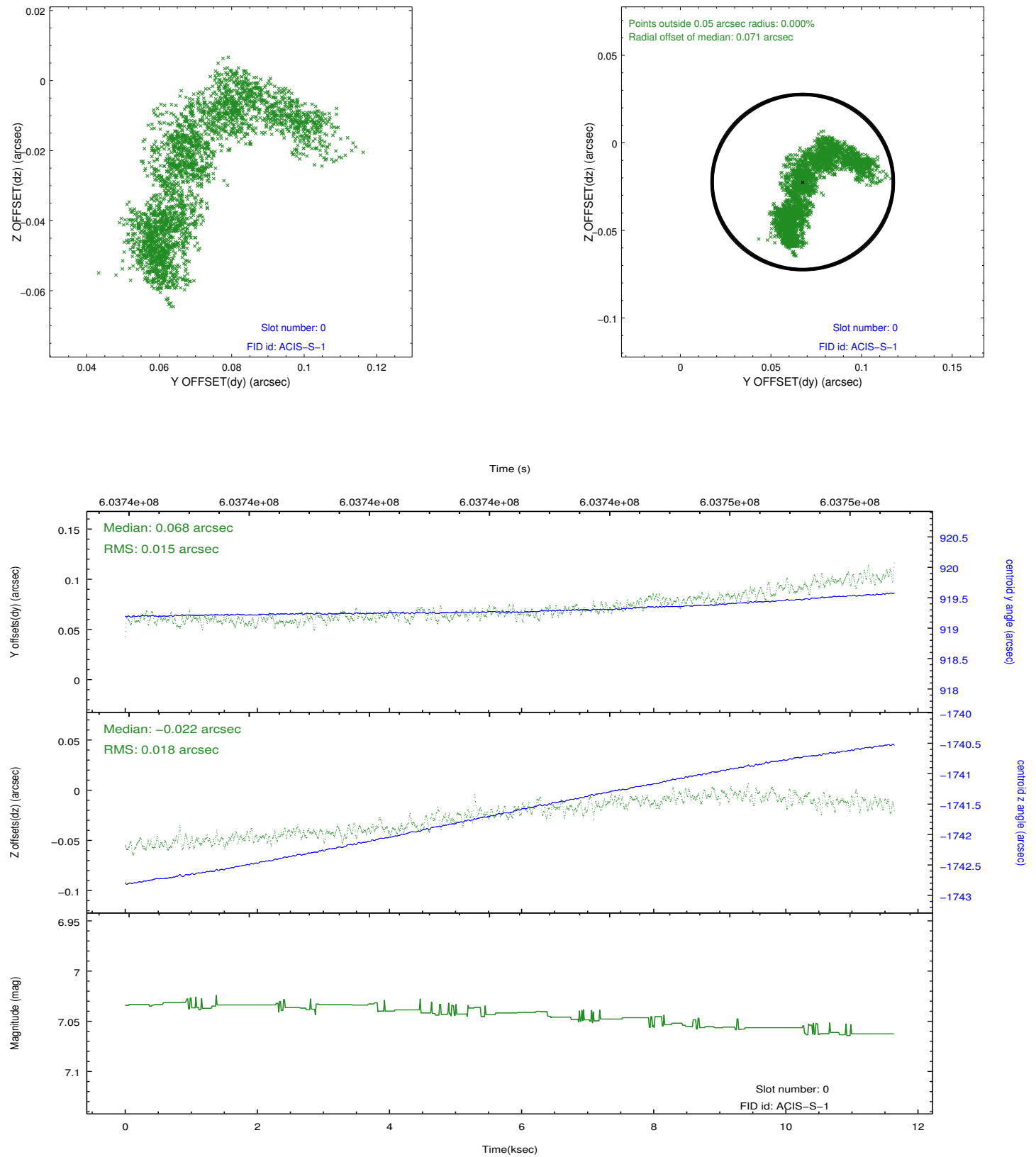


2.4.5 Slot 7

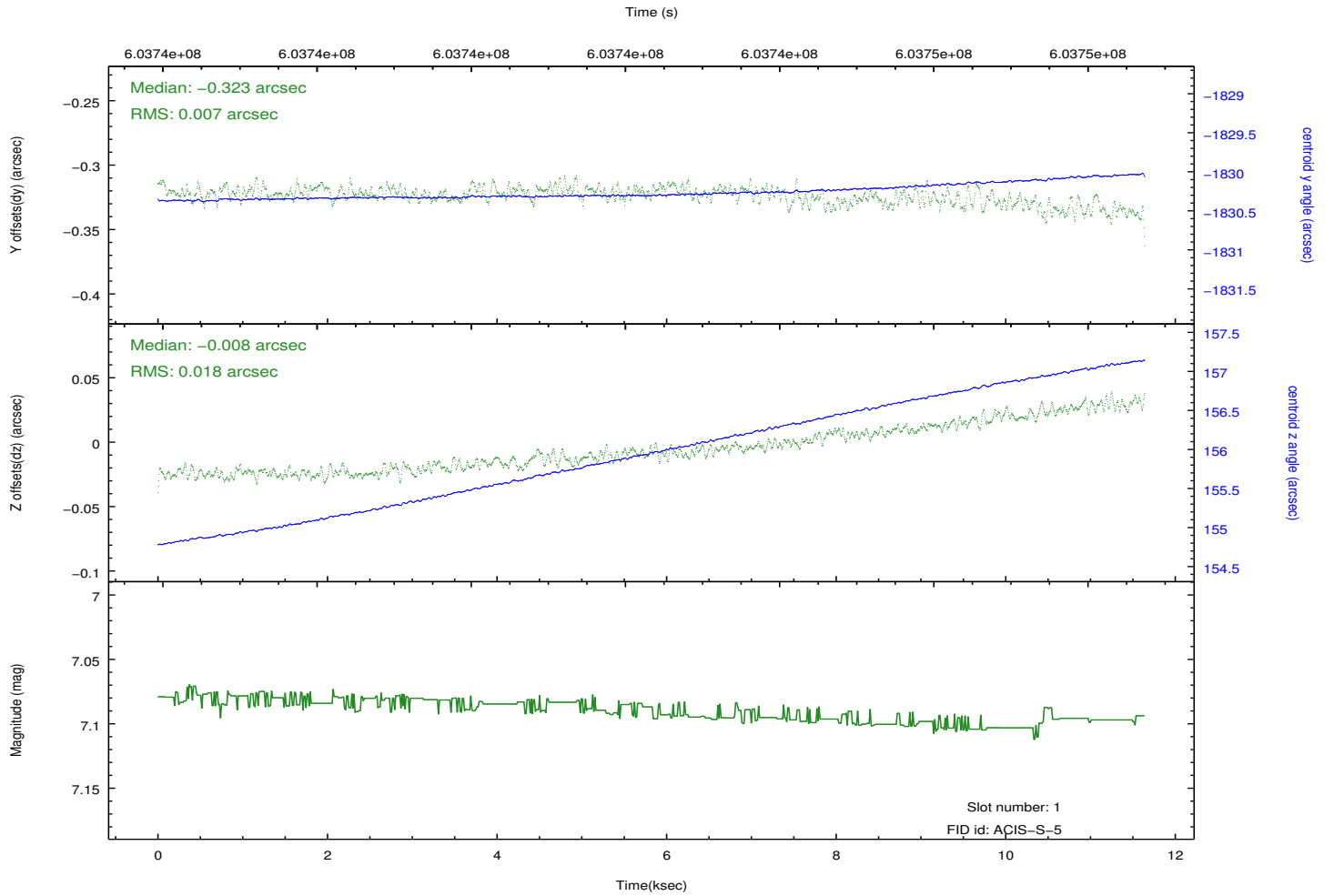
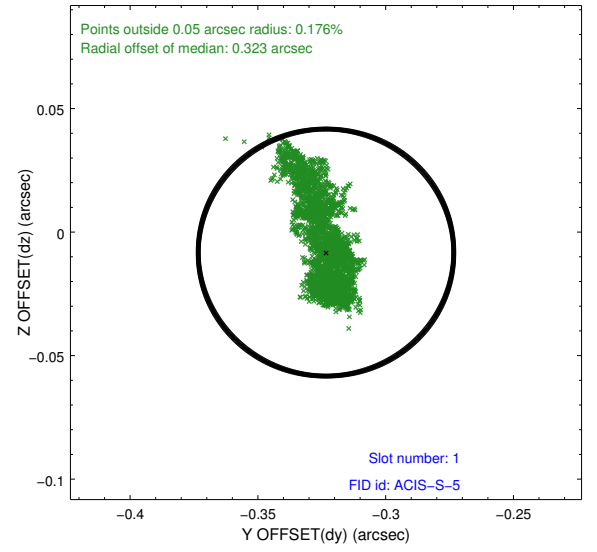
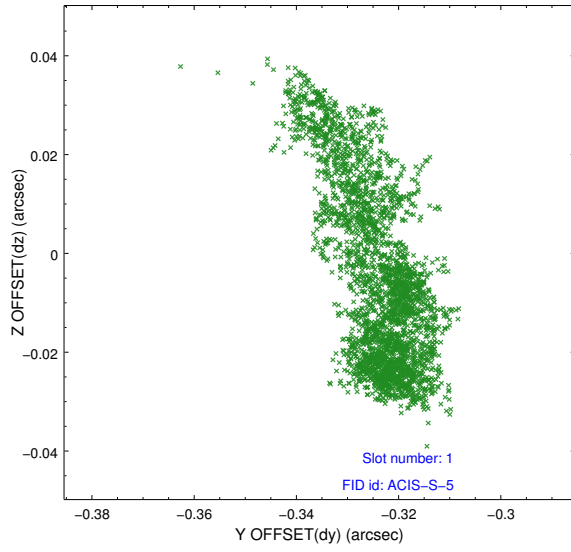


2.5 FID Slots

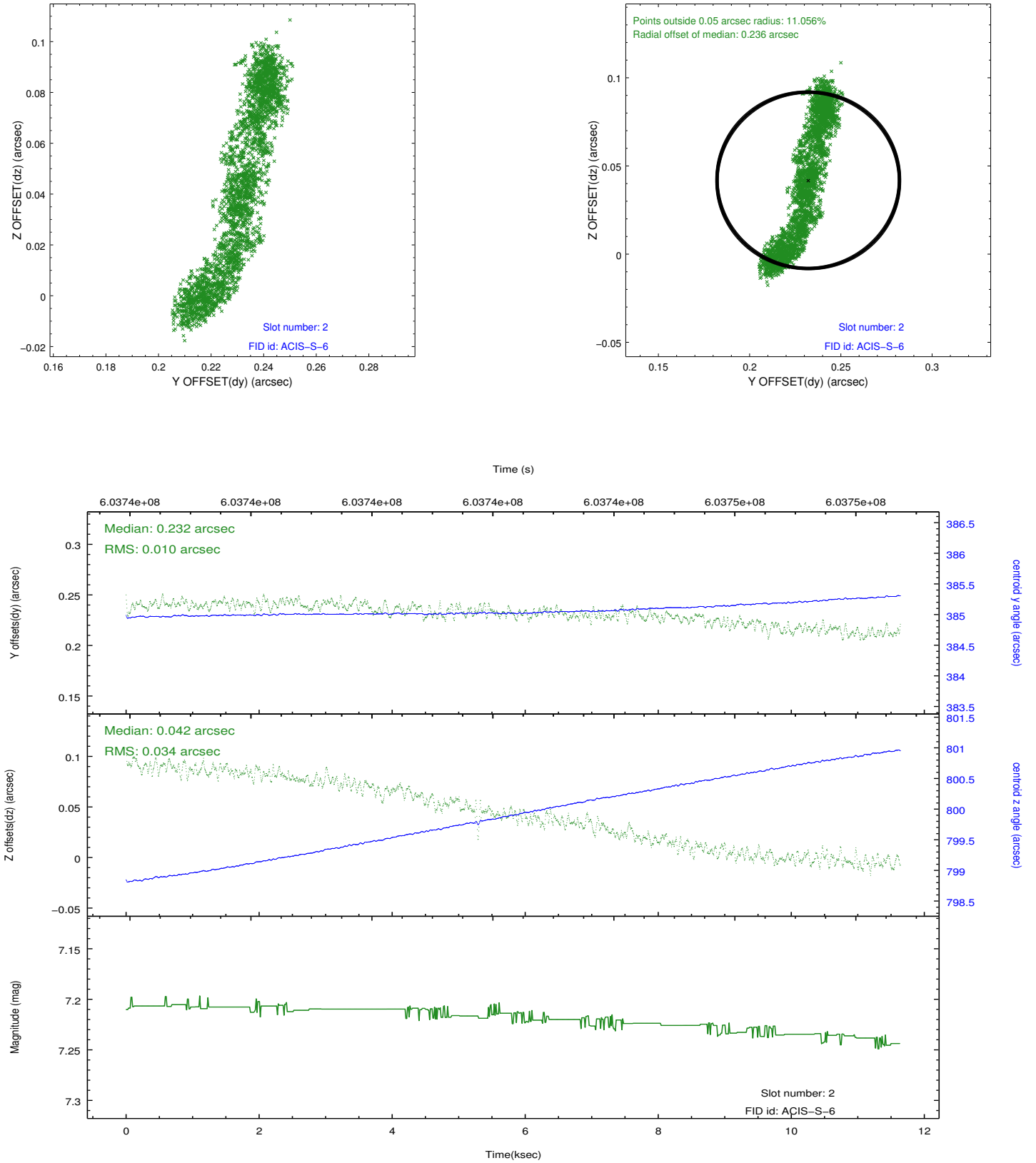
2.5.1 Slot 0



2.5.2 Slot 1



2.5.3 Slot 2



A Summary

A.1 Status

V&V Scientist	Jen Lauer
V&V Date (YYYY-MM-DD)	2017.02.18
V&V Edition	1
V&V Disposition and Status	OK
V&V Charge Time	11.45280017066

A.2 Comments