

V&V Reference Report

L2 ASCDS Version : 10.6

Observation 19282 - L2 Version 1
Chandra X-Ray Center

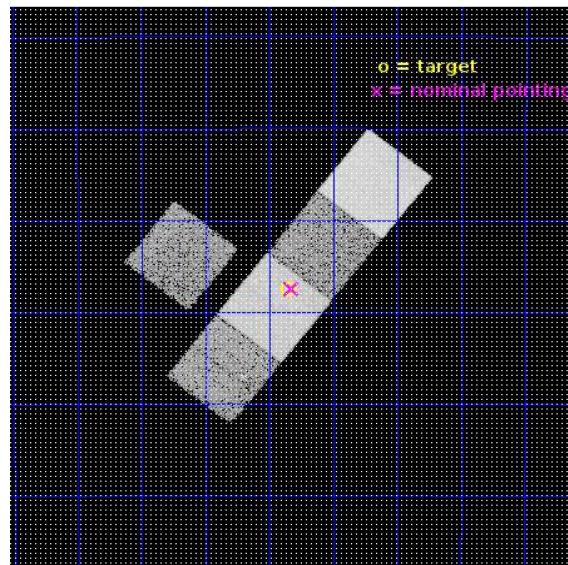
L2 Processing Date : Aug 8 2017

Contents

1	Front	2
2	OBI	3
2.1	OBI	3
2.1.1	Images	3
2.1.2	Bias	3
2.1.3	Parameters	4
2.1.4	Events	4
2.2	Compared Parameters	5
2.3	Aspect	6
2.4	Star Slots	9
2.4.1	Slot 3	9
2.4.2	Slot 4	10
2.4.3	Slot 5	11
2.4.4	Slot 6	12
2.4.5	Slot 7	13
2.5	FID Slots	14
2.5.1	Slot 0	14
2.5.2	Slot 1	15
2.5.3	Slot 2	16
A	Summary	17
A.1	Status	17
A.2	Comments	17

1 Front

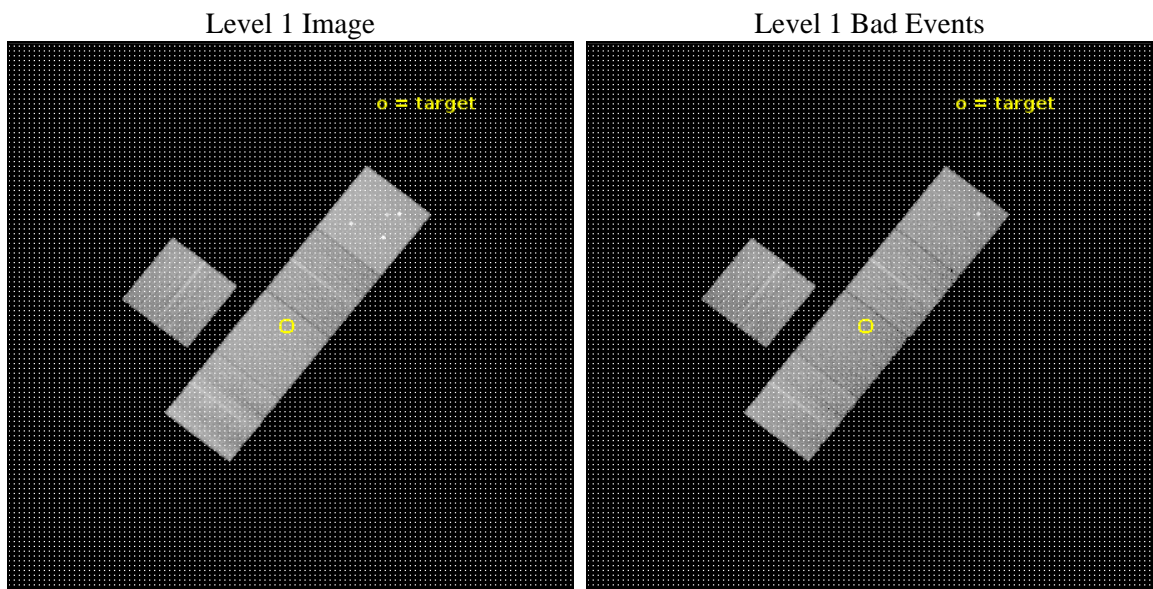
seq_num	502932	Sequence number
obs_id	19282	Observation id
title	Late-time X-rays to map the Zoo of Engine-driven Stellar Explosions	
observer	Raffaella Margutti	Principal investigator
object	GRB161219B	Source name
dtcycle	0	
cycle	P	events from which exps? Prim/Second/Both
ra_targ	91.714042	Observer's specified target RA [deg]
dec_targ	-26.791583	Observer's specified target Dec [deg]
ra_nom	91.706821126182	Nominal RA [deg]
dec_nom	-26.790906499081	Nominal Dec [deg]
roll_nom	128.07637208353	Nominal Roll [deg]
revision	1	Processing version of data
ontime	15056.700115919	Sum of GTIs [s]
livetime	14859.973244323	Livetime [s]
ontime3	15056.700115919	Sum of GTIs [s]
ontime5	15056.700115919	Sum of GTIs [s]
ontime6	15053.559145689	Sum of GTIs [s]
ontime7	15056.700115919	Sum of GTIs [s]
ontime8	15056.700115919	Sum of GTIs [s]
l2events	164787	Number of level 2 events



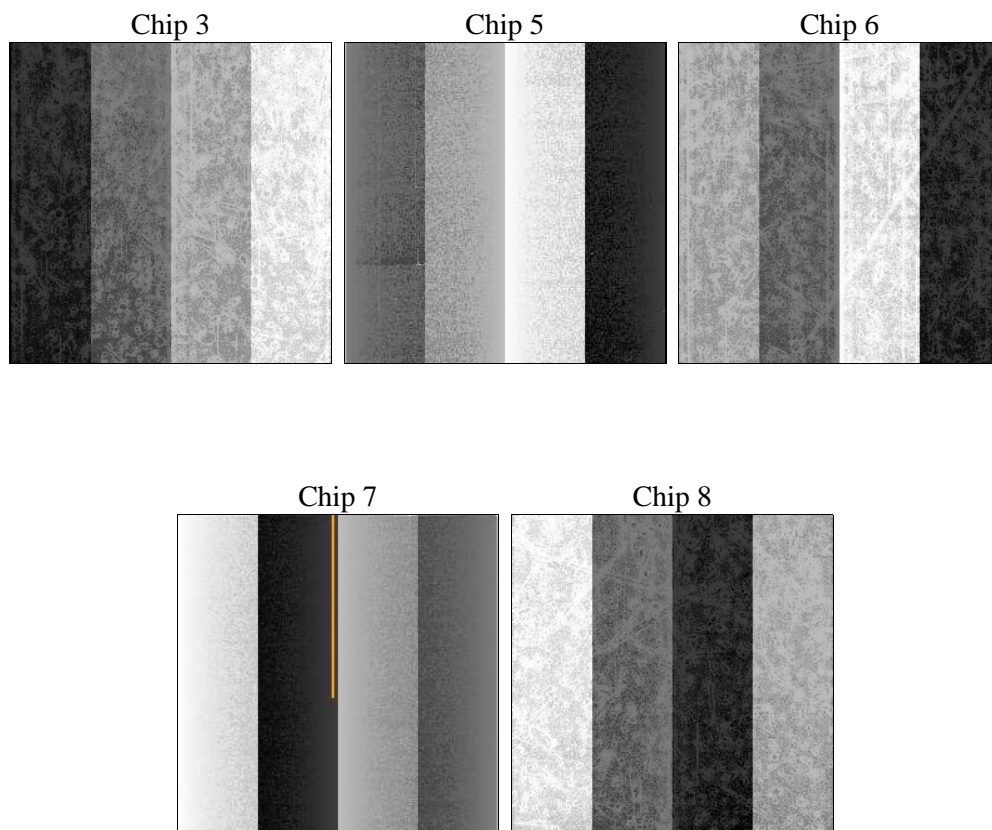
2 OBI

2.1 OBI

2.1.1 Images



2.1.2 Bias



2.1.3 Parameters

obi_num	0	Obi number	sched_exp_time	15000.000000	[s] Scheduled observation exposure time
ascdsver	10.6	Processing system revision	ontime	15056.700115919	Sum of GTIs [s]
caldsver	4.7.5	 	ontime3	15056.700115919	Sum of GTIs [s]
date	2017-08-08T22:00:03	Date and time of file creation	ontime5	15056.700115919	Sum of GTIs [s]
revision	1	Processing version of data	ontime6	15053.559145689	Sum of GTIs [s]
			ontime7	15056.700115919	Sum of GTIs [s]
			ontime8	15056.700115919	Sum of GTIs [s]
			l1events	636944	Number of level 1 events

2.1.4 Events

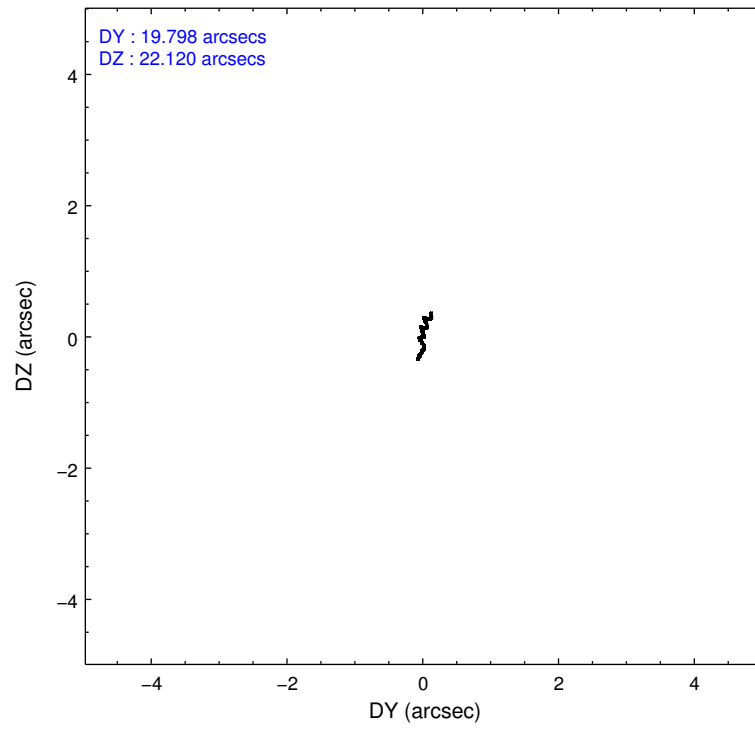
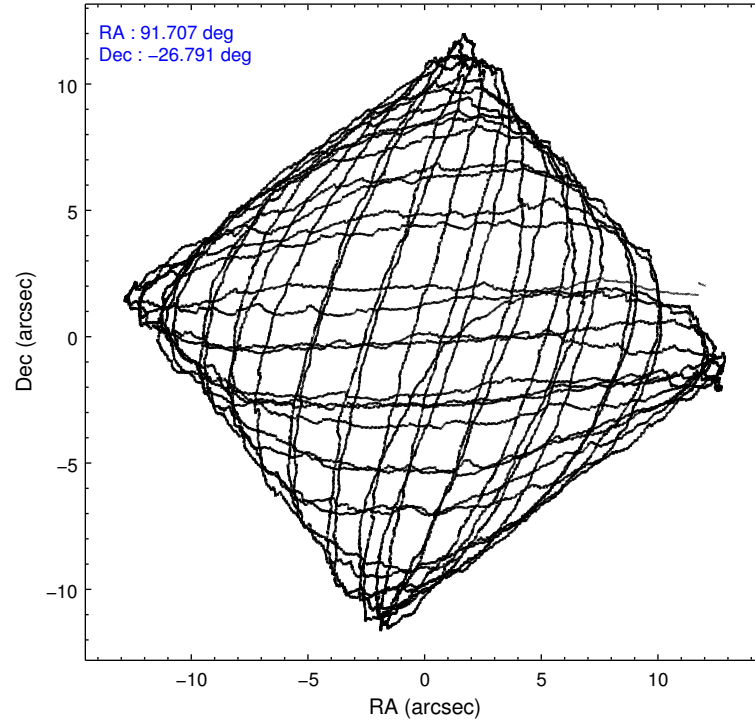
	ccd 3	ccd 5	ccd 6	ccd 7	ccd 8
level 1 events	94987	172327	100233	132791	136606
rejected events	83871	85495	88393	74408	97966
rejected %	88%	49%	88%	56%	71%

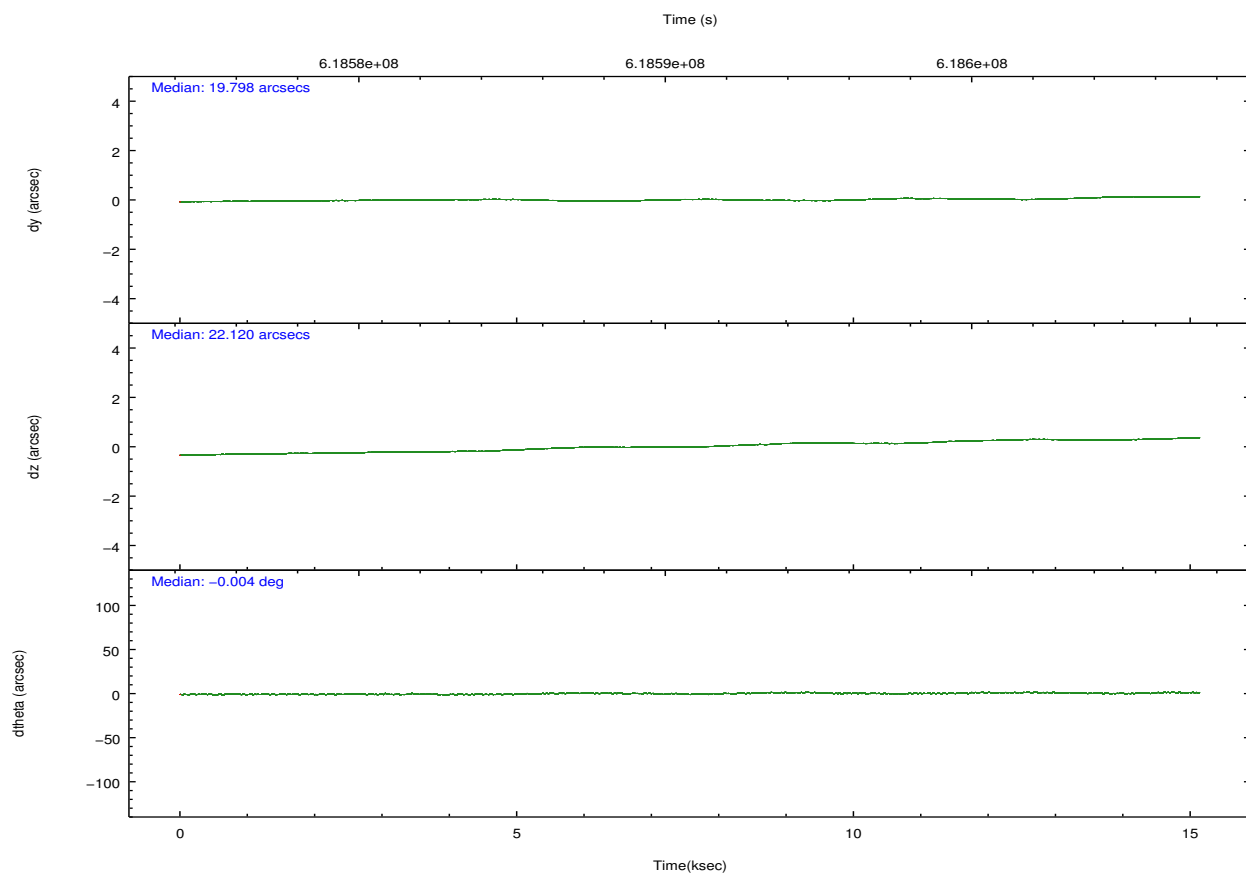
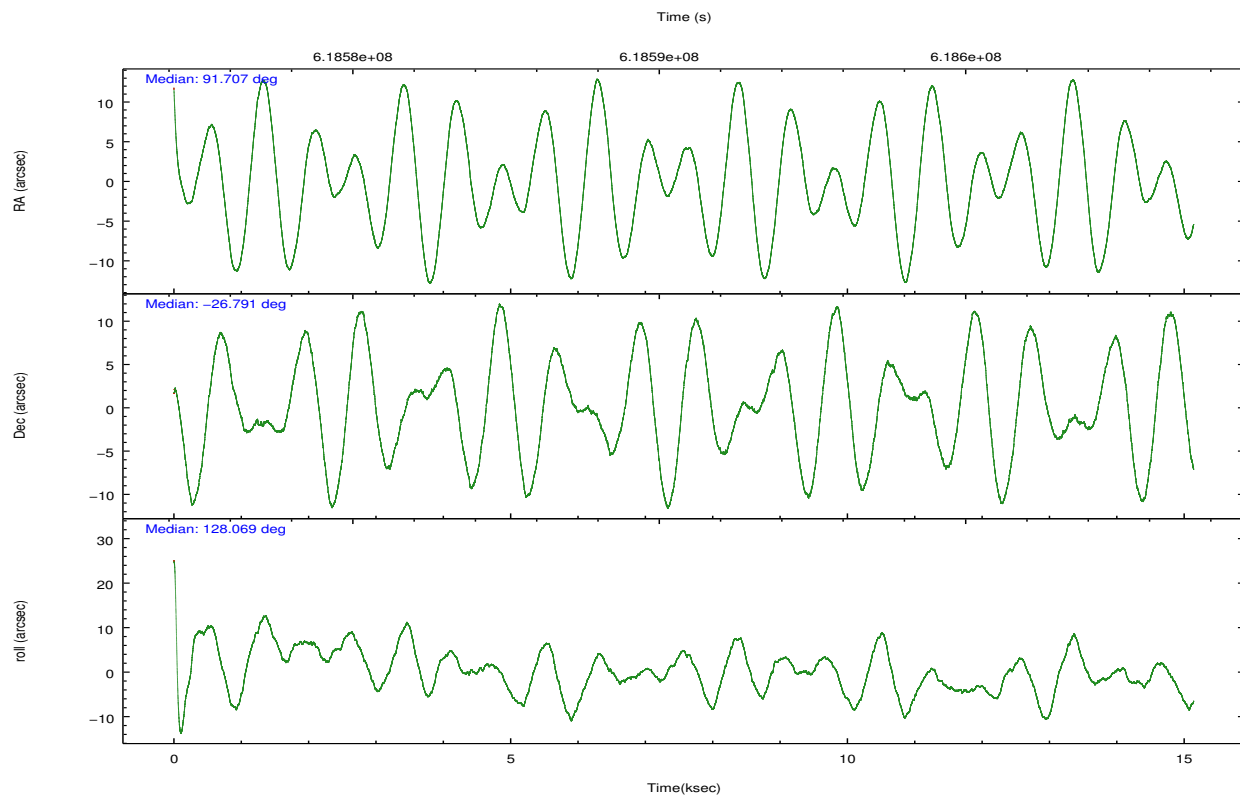
	ccd 3	ccd 5	ccd 6	ccd 7	ccd 8
grade 0 events	4335	13098	3946	5030	11329
	4%	7%	3%	3%	8%
grade 1 events	57	352	64	196	103
	0%	0%	0%	0%	0%
grade 2 events	2431	26185	2750	12582	9354
	2%	15%	2%	9%	6%
grade 3 events	1117	2622	1178	4830	4026
	1%	1%	1%	3%	2%
grade 4 events	1082	2495	1223	4818	3799
	1%	1%	1%	3%	2%
grade 5 events	4955	12130	4908	13274	7421
	5%	7%	4%	9%	5%
grade 6 events	2157	42444	2745	31132	10139
	2%	24%	2%	23%	7%
grade 7 events	78853	73001	83419	60929	90435
	83%	42%	83%	45%	66%

2.2 Compared Parameters

Parameter	Planned	Actual	Parameter	Planned	Actual
Instrument	ACIS	ACIS	Obspar format version number	7	7
Detector	ACIS-35678	ACIS-35678	Obspar file type	PREDICTED	ACTUAL
Grating	NONE	NONE	Obspar update status	NONE	UPDATED
Data mode	VFAINT	VFAINT	CCD I0 on	N	N
Observation mode	POINTING	POINTING	CCD I1 on	N	N
[deg] Pointing RA	91.735503	91.70682112618205	CCD I2 on	N	N
[deg] Pointing Dec	-26.800799	-26.79090649908054	CCD I3 on	O1	Y
[deg] Pointing Roll	127.932646	128.0763720835301	CCD S0 on	N	N
[mm] SIM focus pos	-0.684267	-0.6828225247311905	CCD S1 on	Y	Y
[mm] SIM defocus	0	0.001444936568705701	CCD S2 on	Y	Y
[mm] SIM translation stage pos	-190.132523	-190.1400660498719	CCD S3 on	Y	Y
[mm] SIM translation stage offset	0	0.00754346686406393	CCD S4 on	Y	Y
[s] Observation start time (MET)	618582975.184000	618581311.45287	CCD S5 on	N	N
Observation start date	2017-08-08T12:35:06	2017-08-08T12:08:31	Number of optional ACIS chips dropped	0	0
[s] Observation end time (MET)	618597975.184000	618599093.66641	On-chip summing requested	N	N
Observation end date	2017-08-08T16:45:06	2017-08-08T17:04:53	Subarray requested	NONE	NONE
Read mode	TIMED	TIMED	Alternating exposures requested	N	N
			[s] Primary exposure time	0.000000	3.1

2.3 Aspect



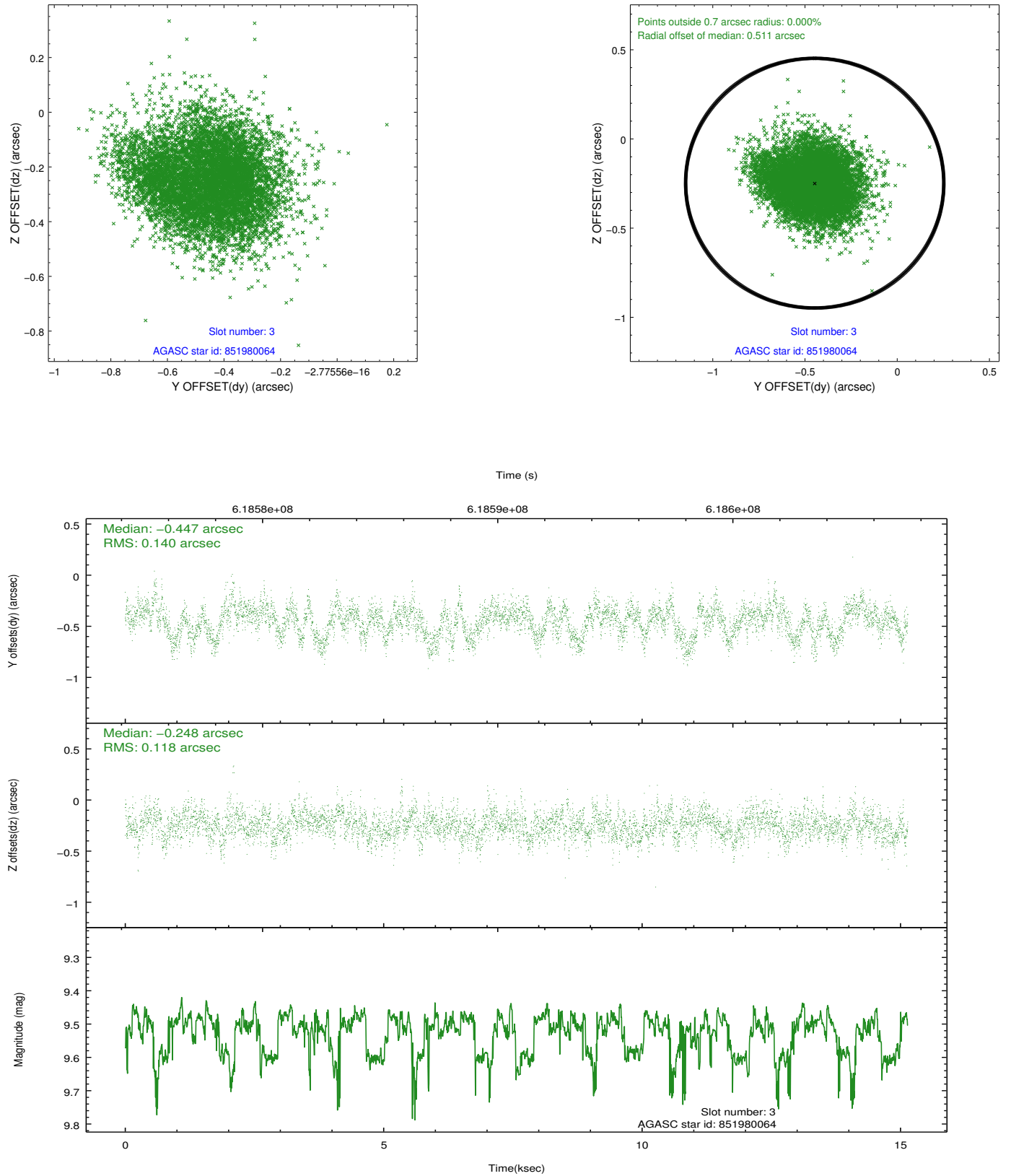


Slot Statistics

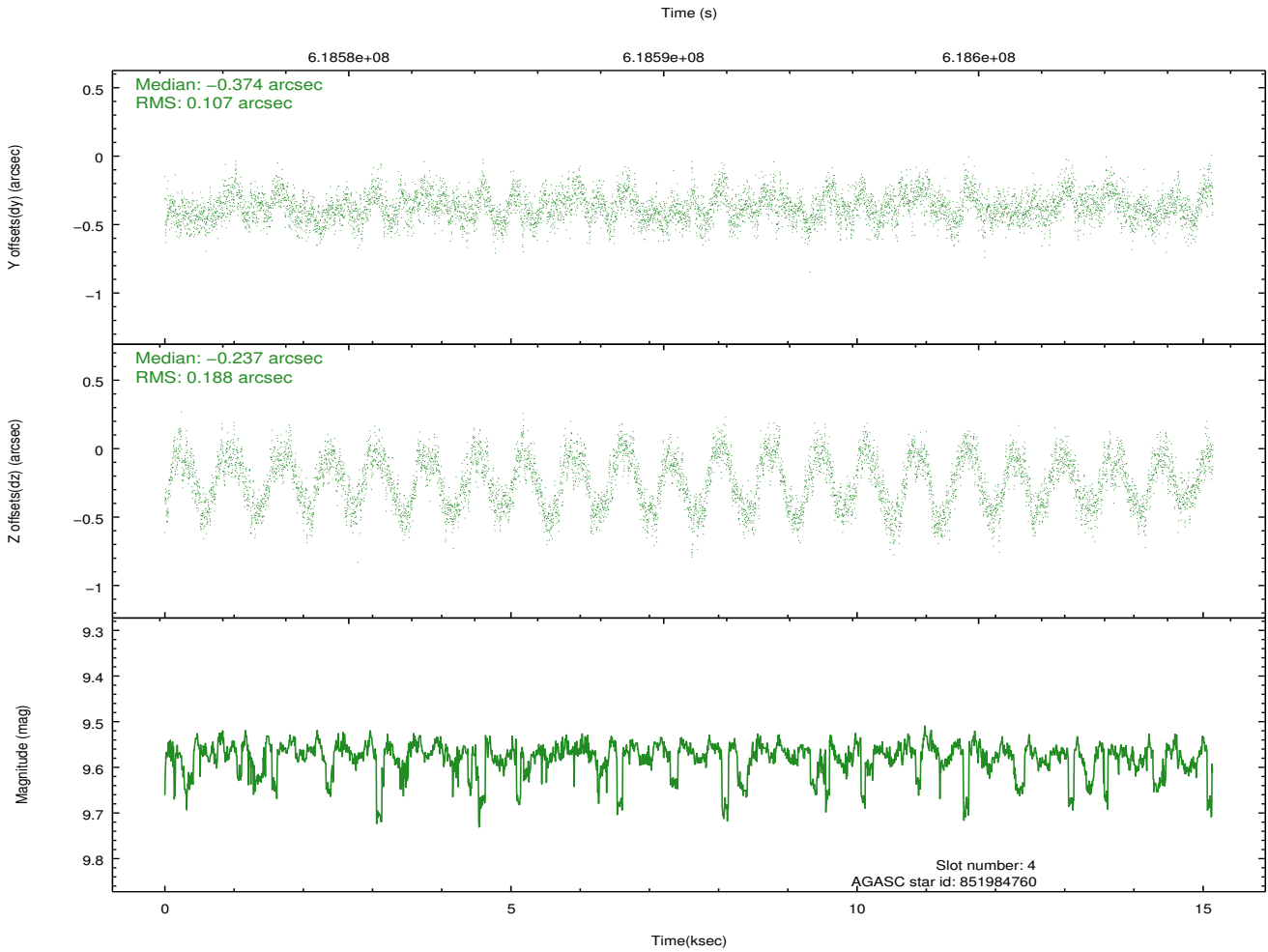
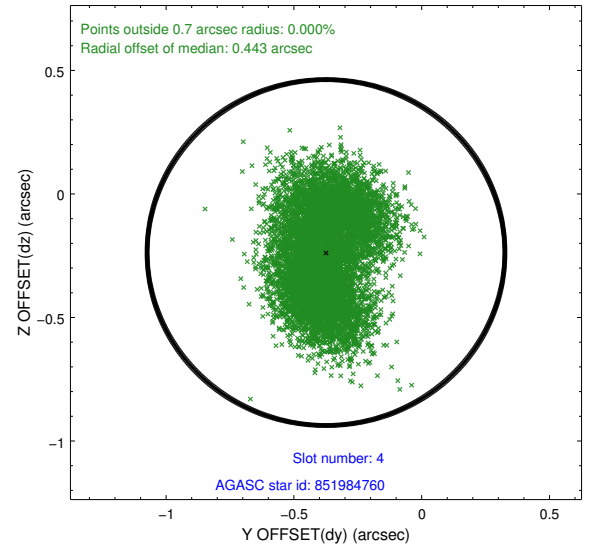
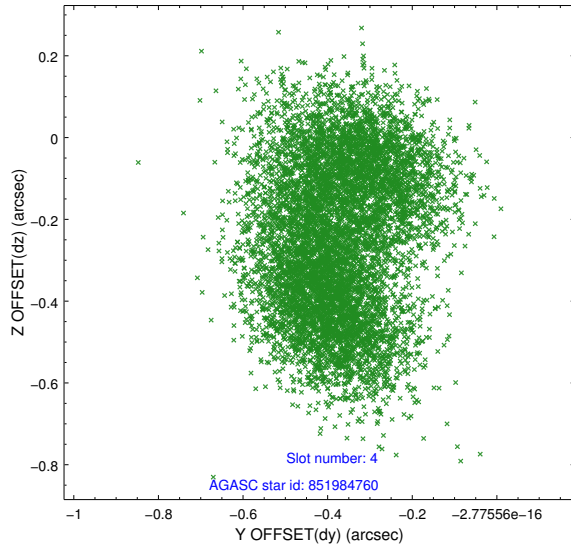
slot	status	used	id	mag	n_pts	med_dy	med_dz	dr1	dr2	ra	dec	mean_y	mean_z
0	FID		ACIS-S-2	6.88	3694	-0.232	-0.119	0.008	0.014	0.000000	0.000000	-773.15	-1743.82
1	FID		ACIS-S-4	6.99	3693	0.499	0.143	0.006	0.014	0.000000	0.000000	2140.73	164.60
2	FID		ACIS-S-5	6.98	3693	-0.298	-0.016	0.009	0.014	0.000000	0.000000	-1825.67	158.47
3	GUIDE	used	851980064	9.52	7366	-0.447	-0.248	0.195	0.312	91.487754	-26.922639	141.83	897.15
4	GUIDE	used	851984760	9.57	7378	-0.374	-0.237	0.237	0.353	91.138044	-26.529509	1949.39	920.42
5	GUIDE	used	853678800	9.63	7371	0.314	0.238	0.175	0.299	92.206863	-27.151094	-1924.31	-413.84
6	GUIDE	used	853691200	6.14	7387	0.275	0.466	0.119	0.201	92.446440	-26.701088	-1126.73	-2019.75
7	GUIDE	used	851460016	8.95	7379	0.248	-0.214	0.191	0.361	91.851498	-25.878206	2389.16	-2338.22

2.4 Star Slots

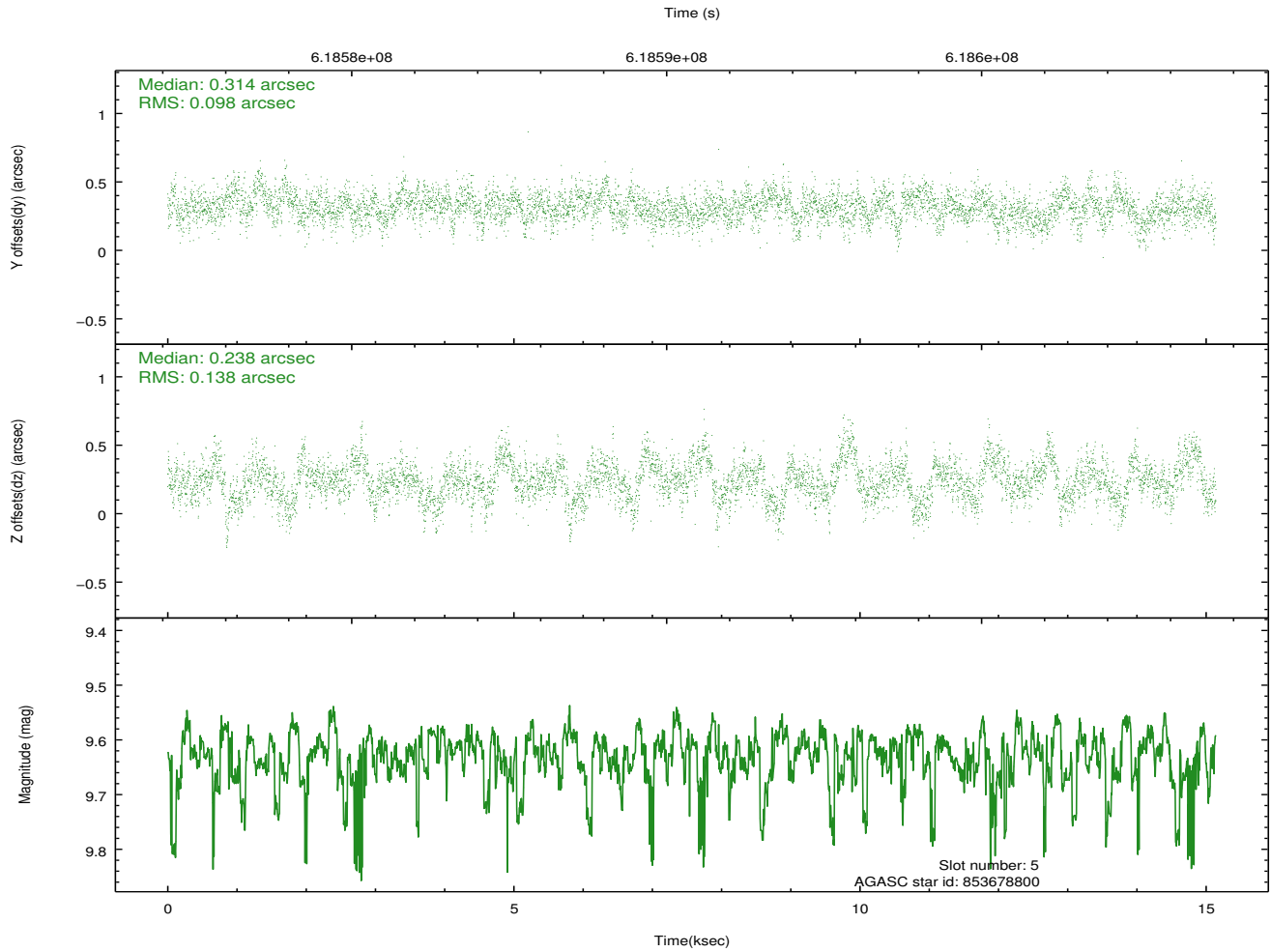
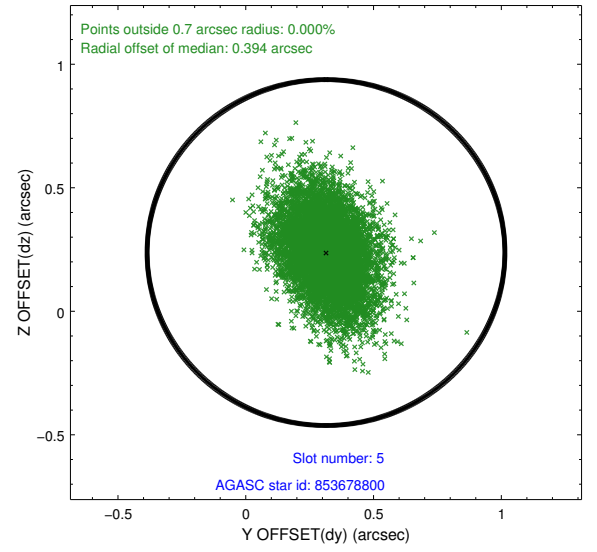
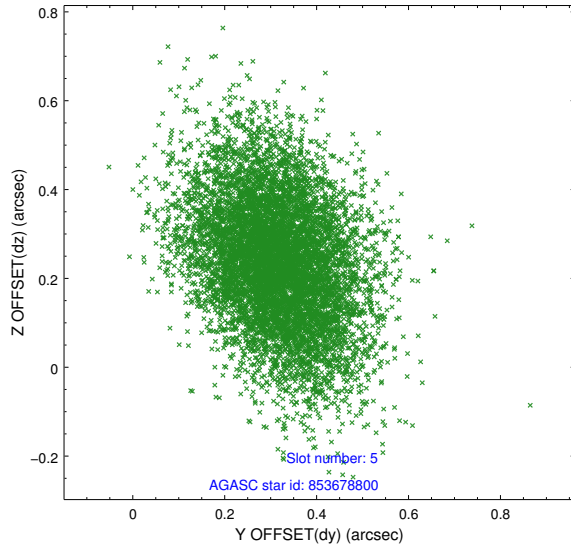
2.4.1 Slot 3



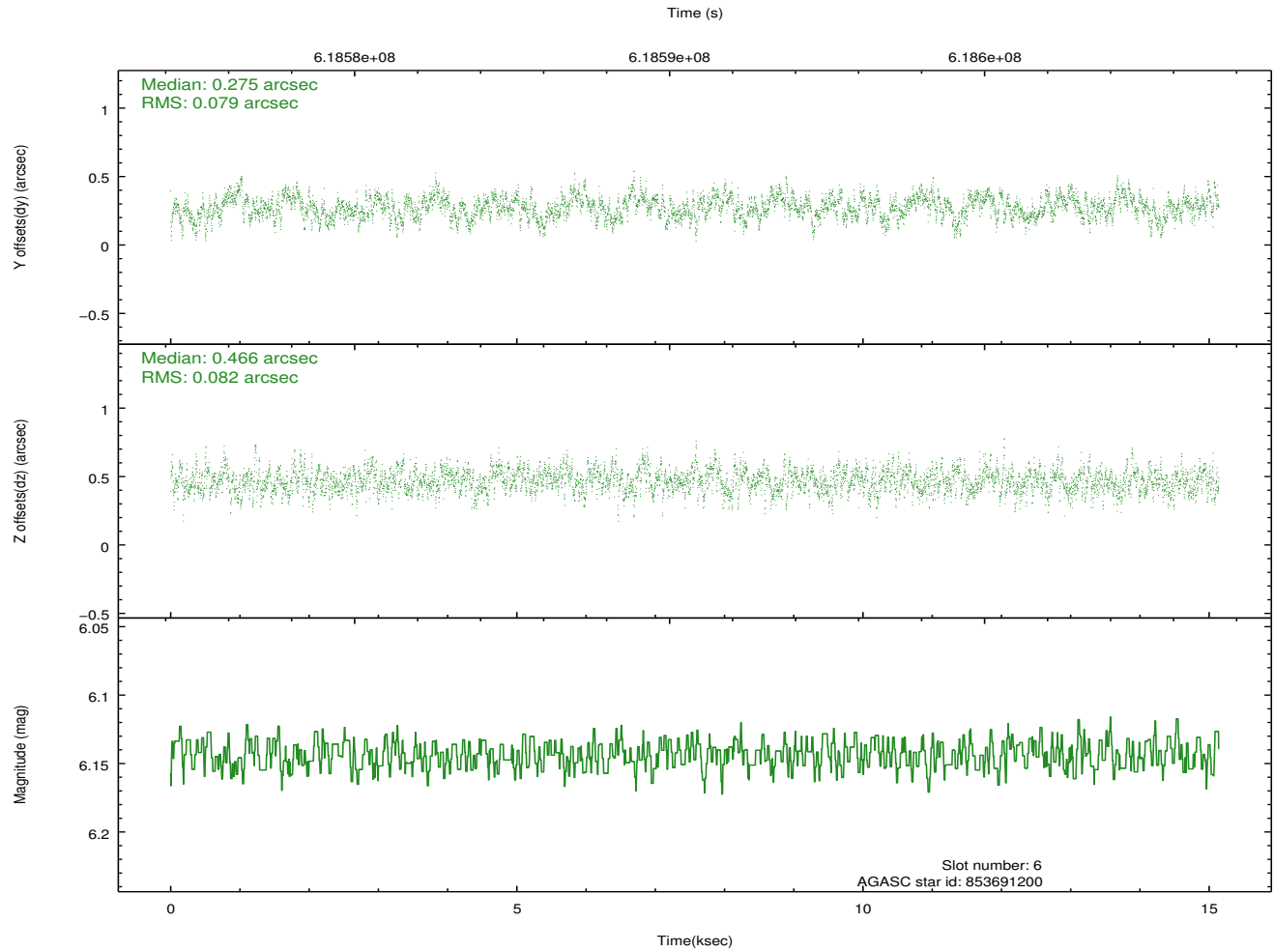
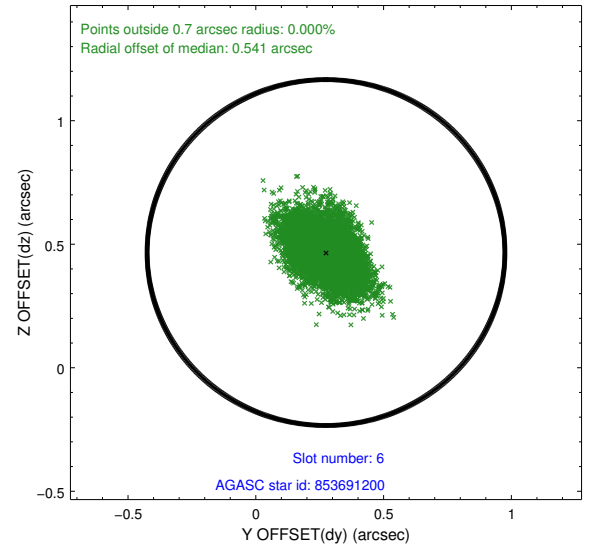
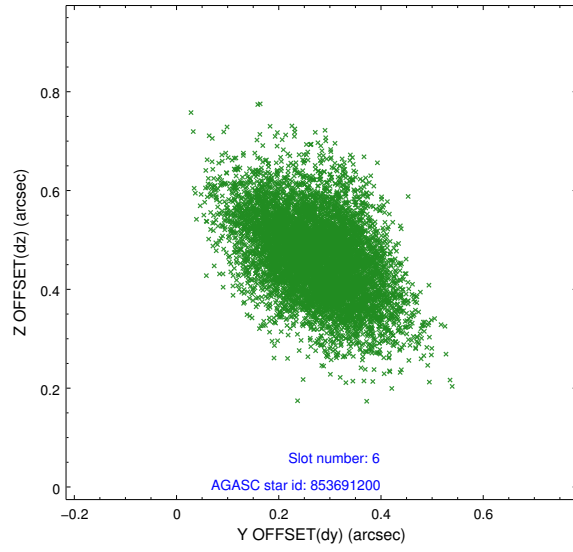
2.4.2 Slot 4



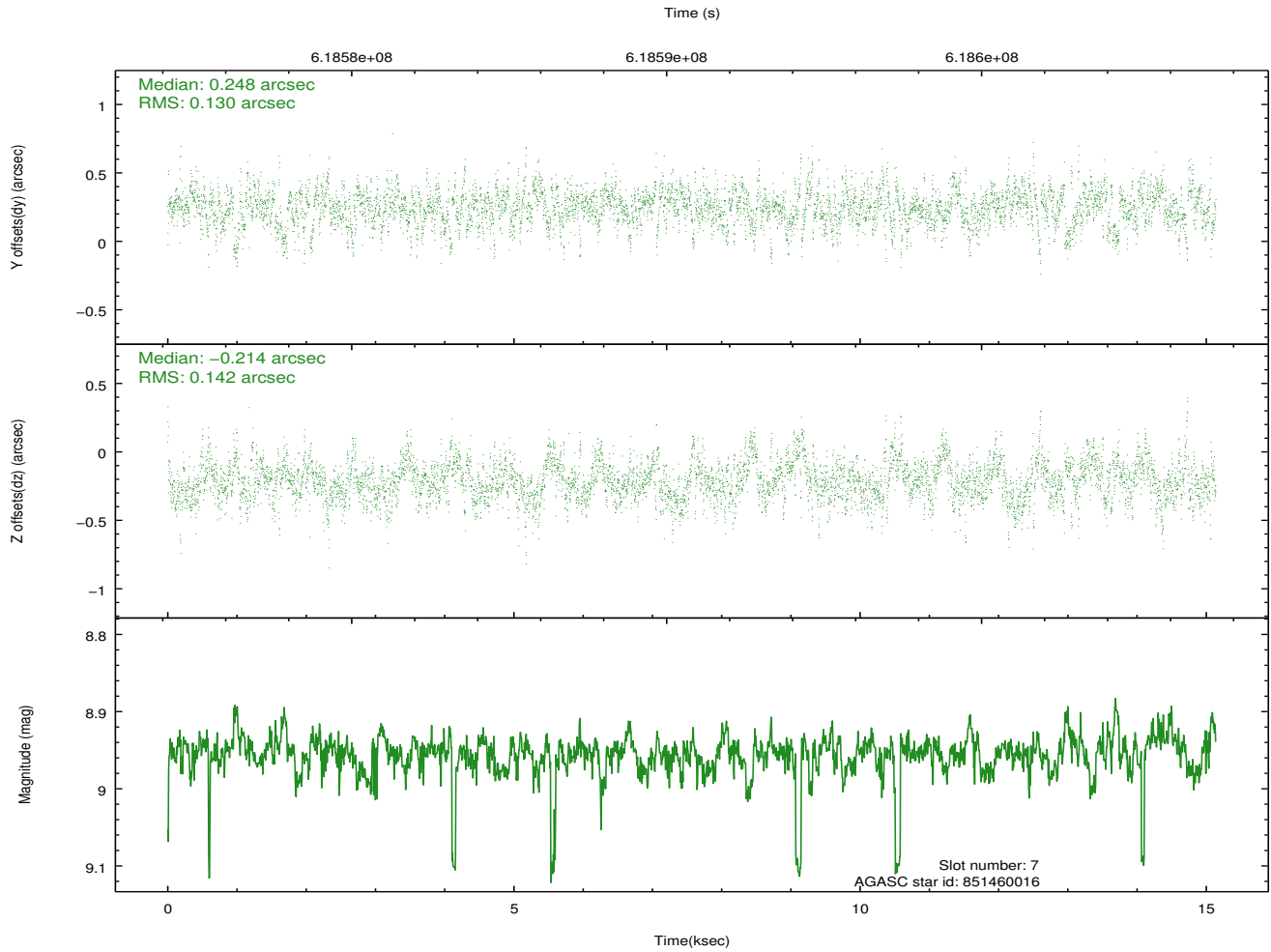
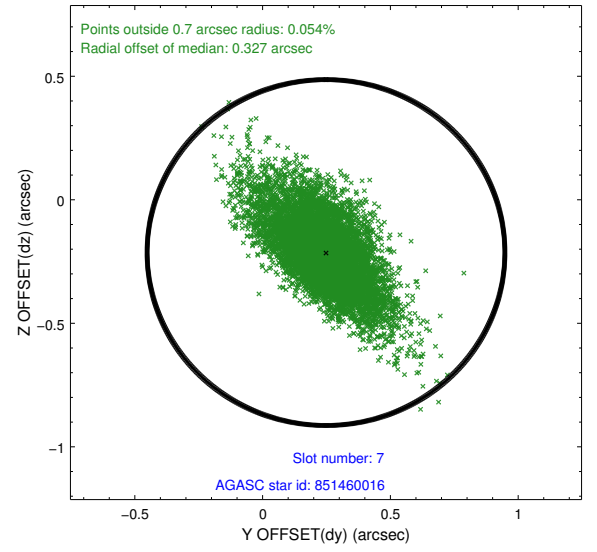
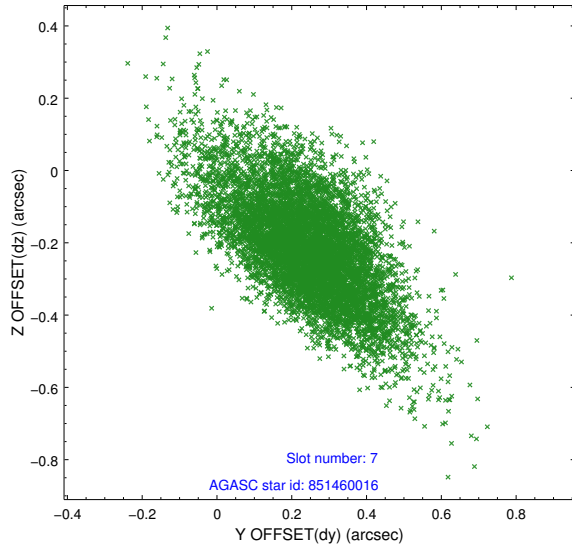
2.4.3 Slot 5



2.4.4 Slot 6

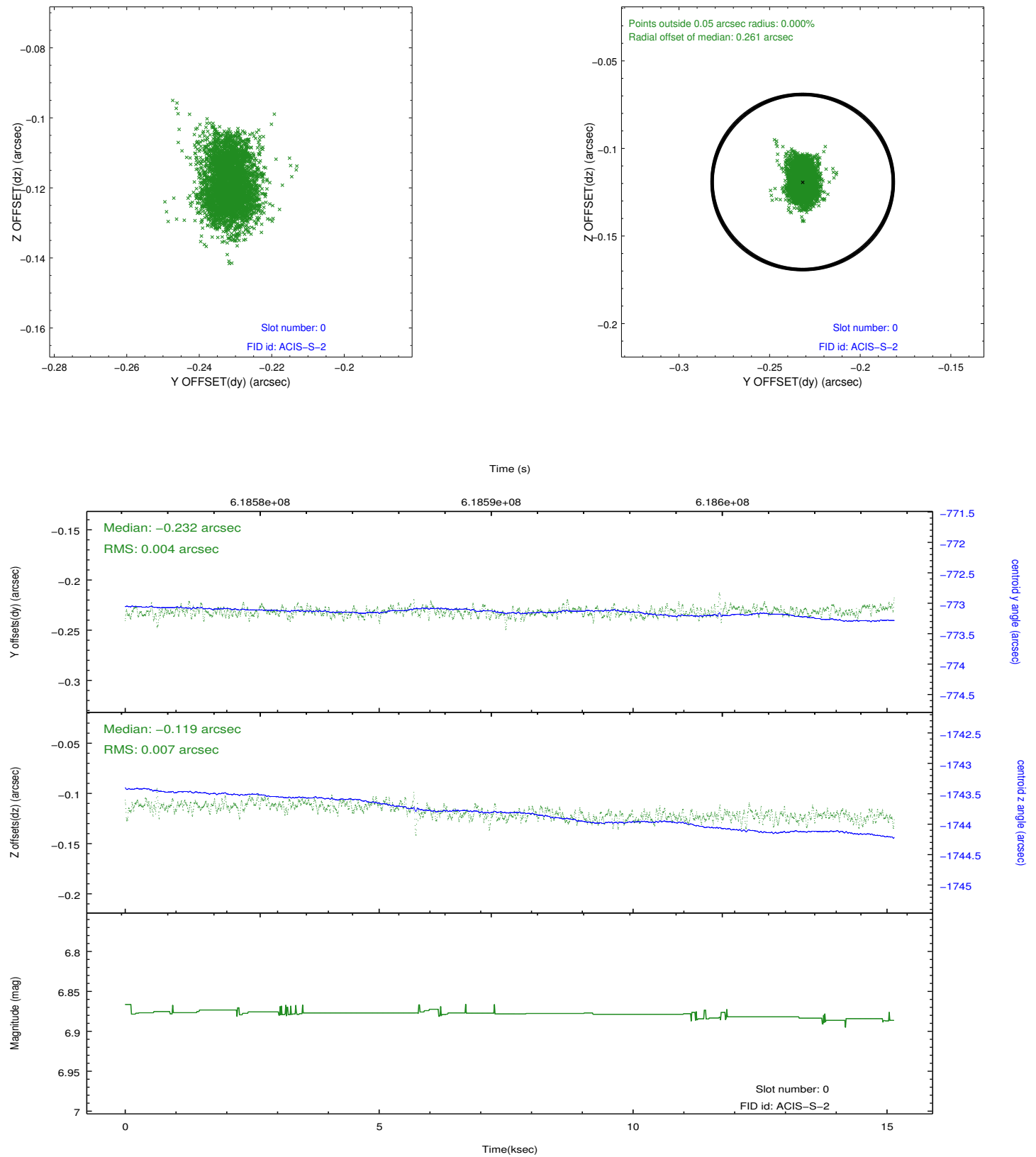


2.4.5 Slot 7

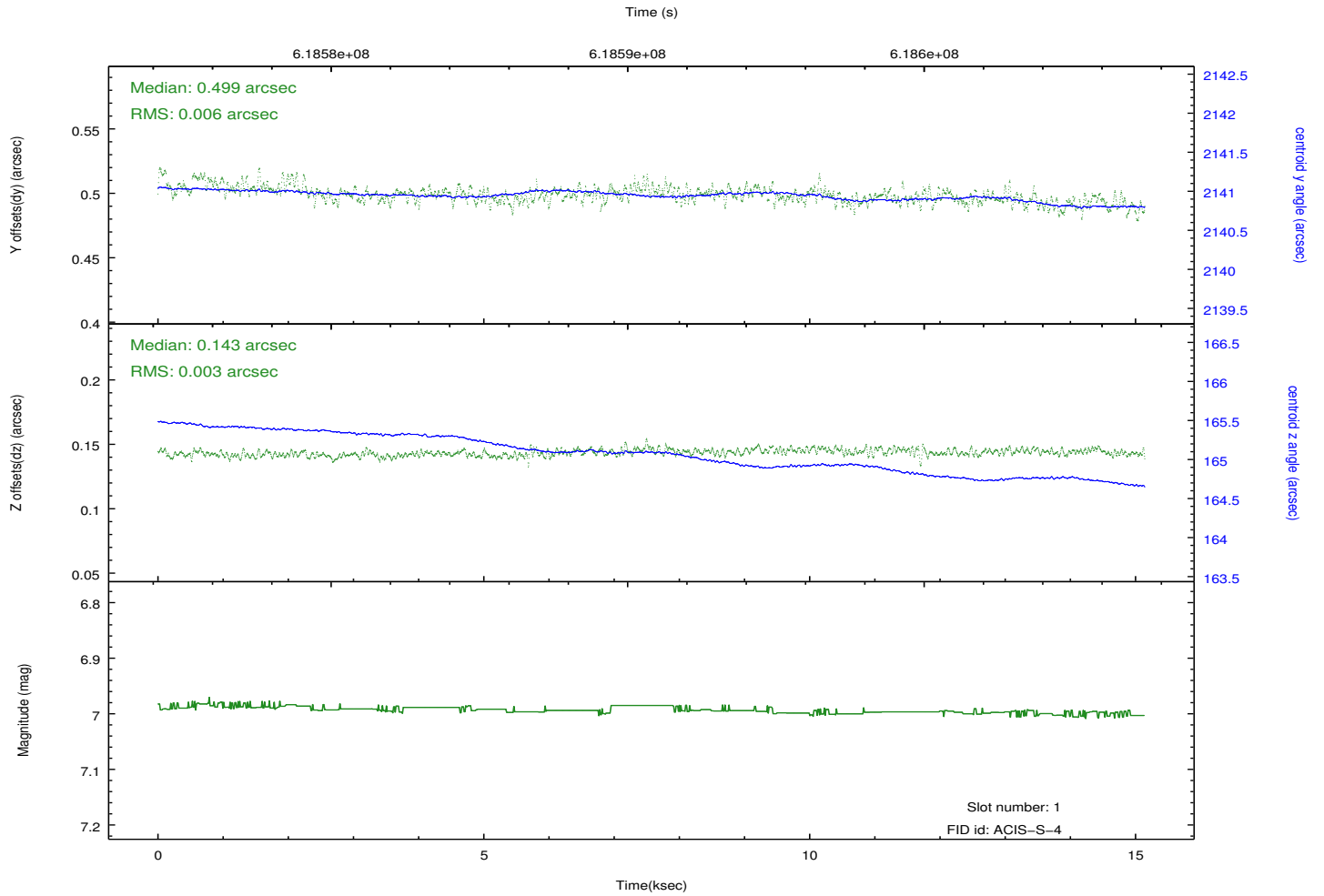
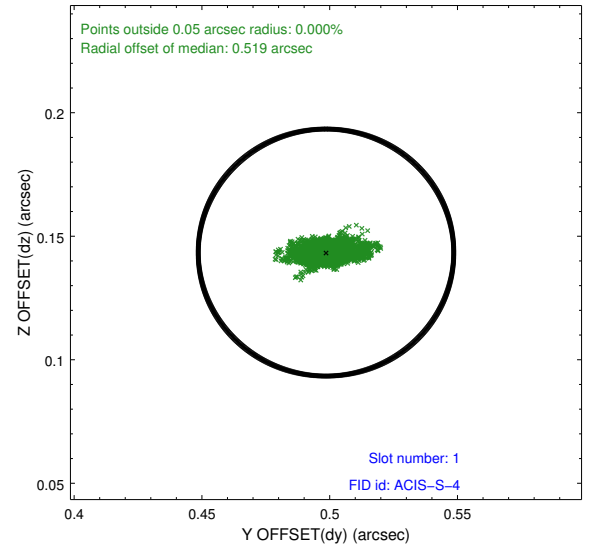
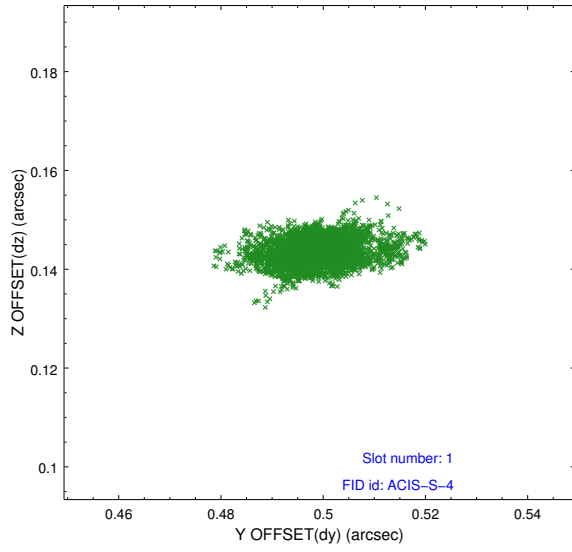


2.5 FID Slots

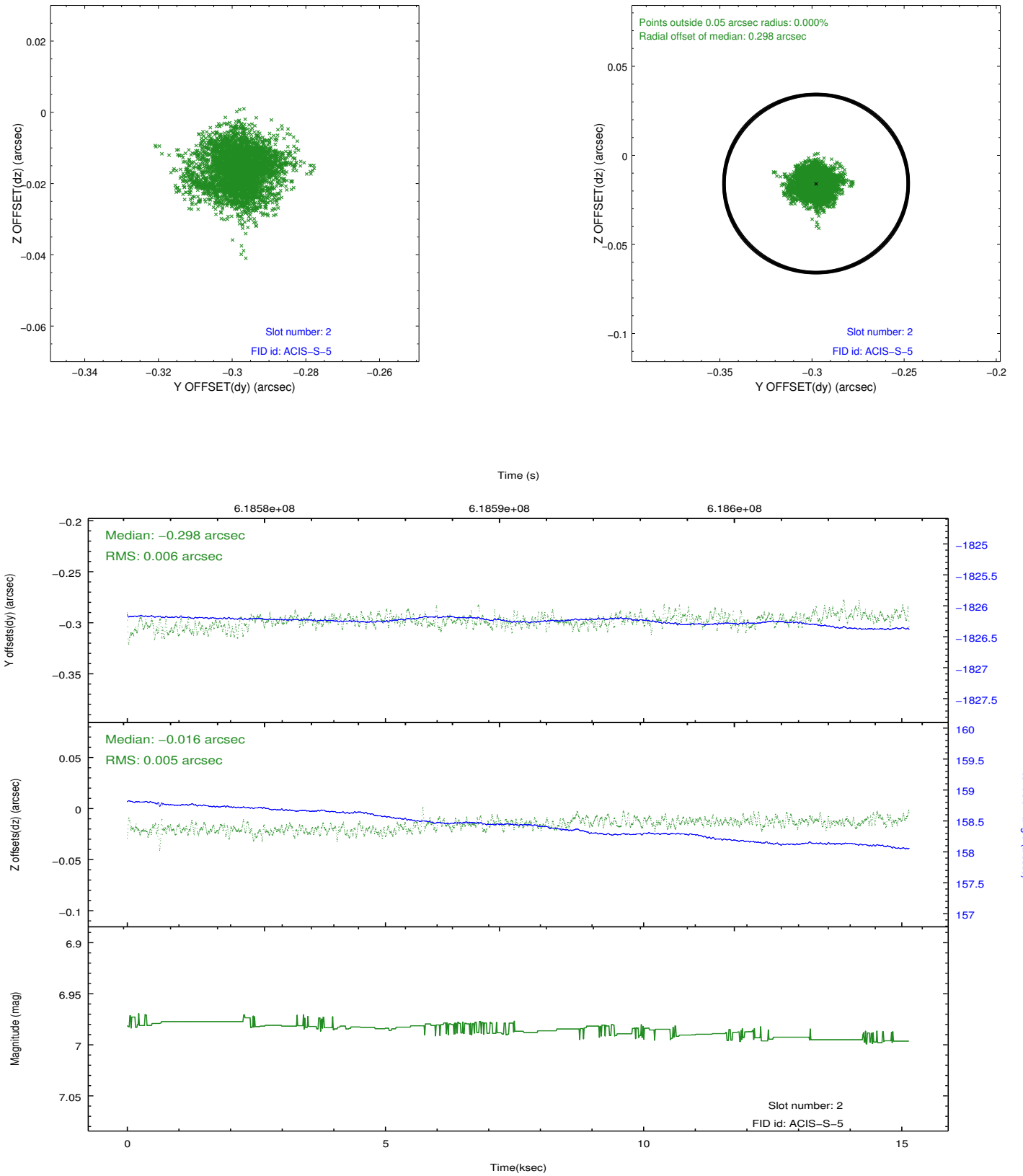
2.5.1 Slot 0



2.5.2 Slot 1



2.5.3 Slot 2



A Summary

A.1 Status

V&V Scientist	Beth Sundheim
V&V Date (YYYY-MM-DD)	2017.08.08
V&V Edition	1
V&V Disposition and Status	OK
V&V Charge Time	15.056700115919

A.2 Comments