

V&V Reference Report

L2 ASCDS Version : 10.6

Observation 20831 - L2 Version 1
Chandra X-Ray Center

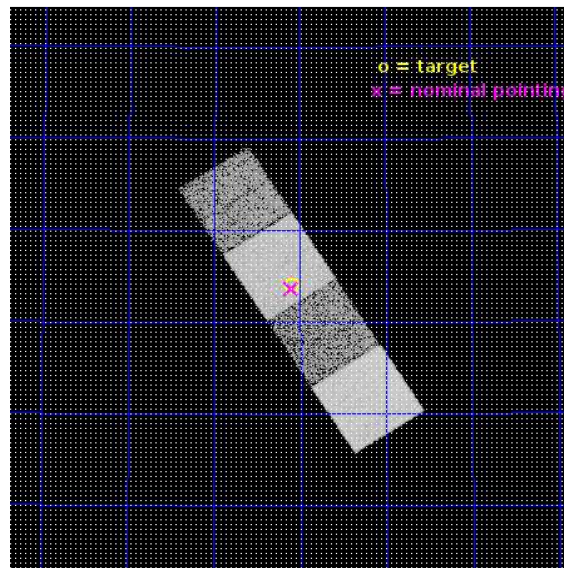
L2 Processing Date : Nov 3 2017

Contents

1	Front	2
2	OBI	3
2.1	OBI	3
2.1.1	Images	3
2.1.2	Bias	3
2.1.3	Parameters	4
2.1.4	Events	4
2.2	Compared Parameters	5
2.3	Aspect	6
2.4	Star Slots	9
2.4.1	Slot 3	9
2.4.2	Slot 4	10
2.4.3	Slot 5	11
2.4.4	Slot 6	12
2.4.5	Slot 7	13
2.5	FID Slots	14
2.5.1	Slot 0	14
2.5.2	Slot 1	15
2.5.3	Slot 2	16
A	Summary	17
A.1	Status	17
A.2	Comments	17

1 Front

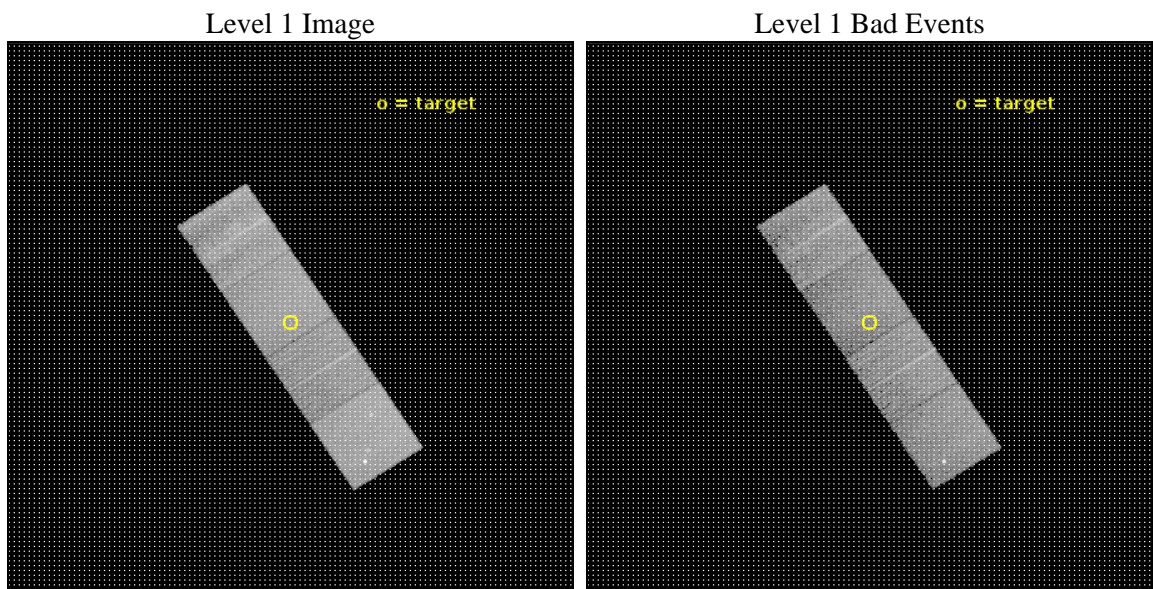
seq_num	201197	Sequence number
obs_id	20831	Observation id
title	Candidate TDE AT 2017gbl	Proposal title
observer	Teppo Heikkila	Principal investigator
object	AT 2017gbl	Source name
dtcycle	0	
cycle	P	events from which exps? Prim/Second/Both
ra_targ	356.522917	Observer's specified target RA [deg]
dec_targ	53.233639	Observer's specified target Dec [deg]
ra_nom	356.52546449816	Nominal RA [deg]
dec_nom	53.22743925307	Nominal Dec [deg]
roll_nom	237.26656601787	Nominal Roll [deg]
revision	1	Processing version of data
ontime	10065.700077534	Sum of GTIs [s]
livetime	9934.1842957602	Livetime [s]
ontime5	10065.700077534	Sum of GTIs [s]
ontime6	10065.700077534	Sum of GTIs [s]
ontime7	10065.700077534	Sum of GTIs [s]
ontime8	10065.700077534	Sum of GTIs [s]
l2events	104618	Number of level 2 events



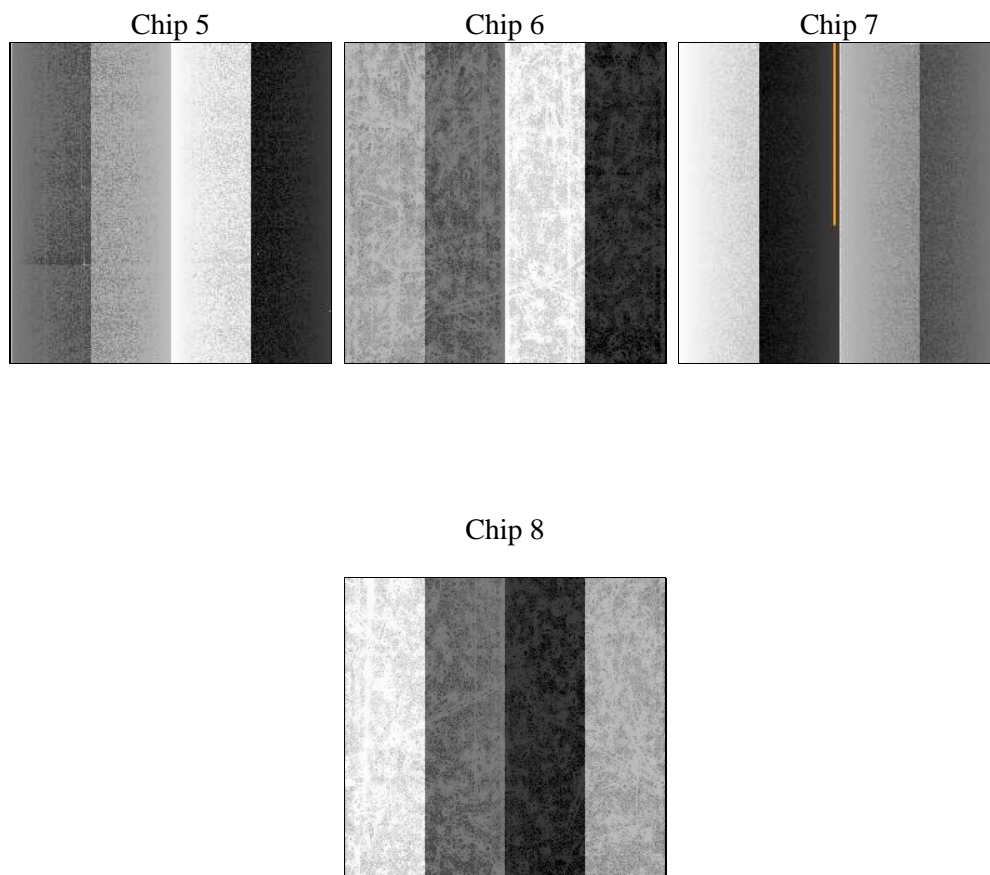
2 OBI

2.1 OBI

2.1.1 Images



2.1.2 Bias



2.1.3 Parameters

obi_num	0	Obi number	sched_exp_time	10000.000000	[s] Scheduled observation exposure time
ascdsver	10.6	Processing system revision	ontime	10065.700077534	Sum of GTIs [s]
caldbver	4.7.6	 	ontime5	10065.700077534	Sum of GTIs [s]
date	2017-11-03T23:15:09	Date and time of file creation	ontime6	10065.700077534	Sum of GTIs [s]
revision	1	Processing version of data	ontime7	10065.700077534	Sum of GTIs [s]
			ontime8	10065.700077534	Sum of GTIs [s]
			l1events	364023	Number of level 1 events

2.1.4 Events

	ccd 5	ccd 6	ccd 7	ccd 8
level 1 events	113157	69089	89906	91871
rejected events	59003	61158	50453	65821
rejected %	52%	88%	56%	71%

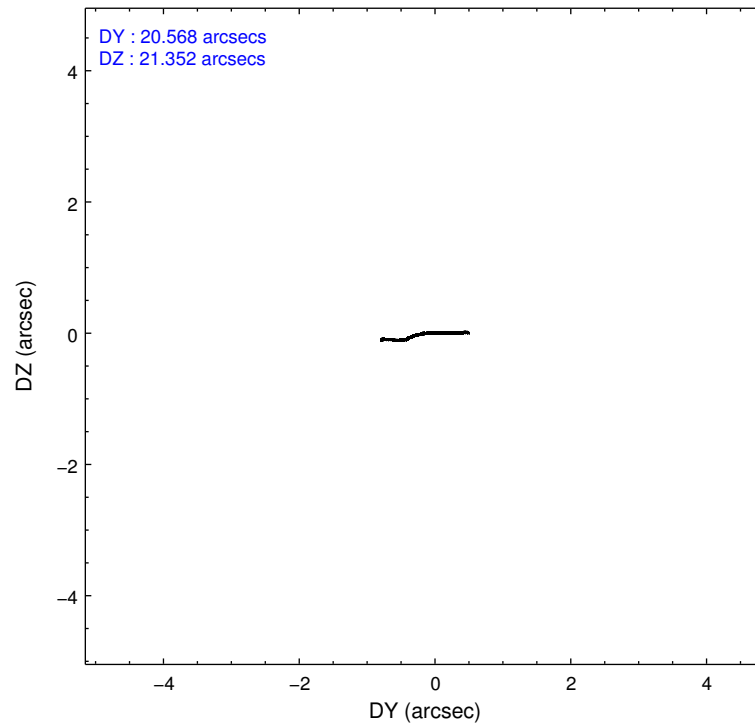
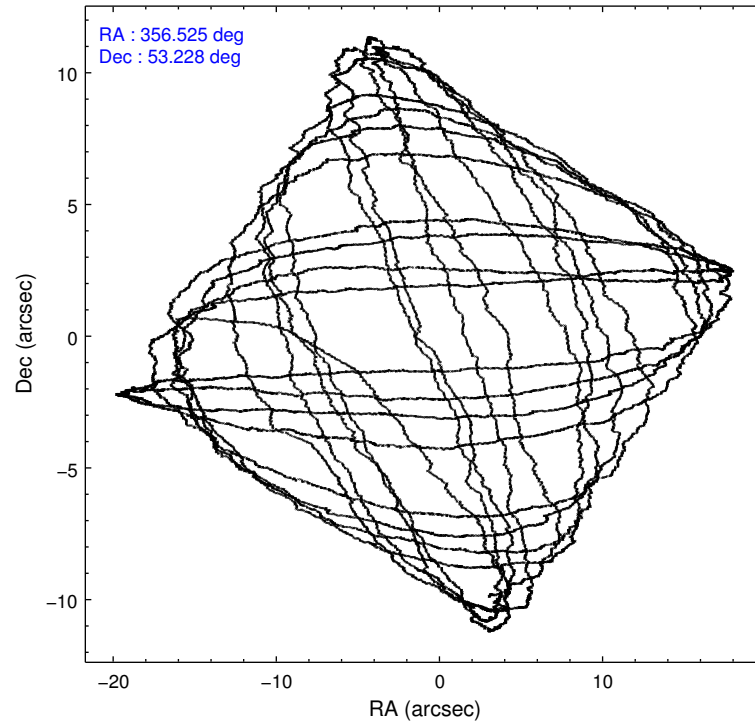
	ccd 5	ccd 6	ccd 7	ccd 8
grade 0 events	4252	2574	3377	7780
	3%	3%	3%	8%
grade 1 events	233	31	115	70
	0%	0%	0%	0%
grade 2 events	17744	1878	8302	6095
	15%	2%	9%	6%
grade 3 events	1644	750	3199	2828
	1%	1%	3%	3%
grade 4 events	1562	860	3269	2521
	1%	1%	3%	2%
grade 5 events	8220	3359	9216	4992
	7%	4%	10%	5%
grade 6 events	28967	1872	21315	6829
	25%	2%	23%	7%
grade 7 events	50535	57765	41113	60756
	44%	83%	45%	66%

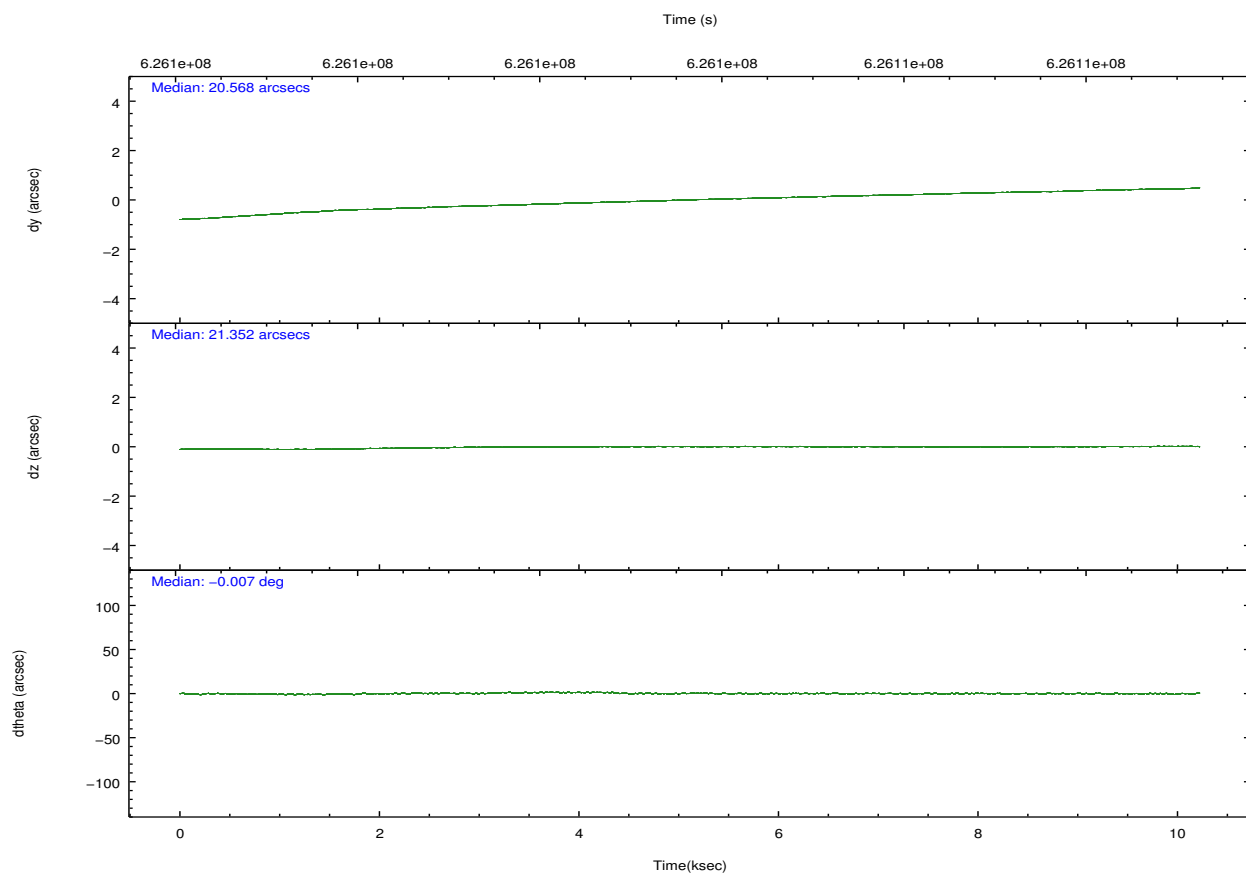
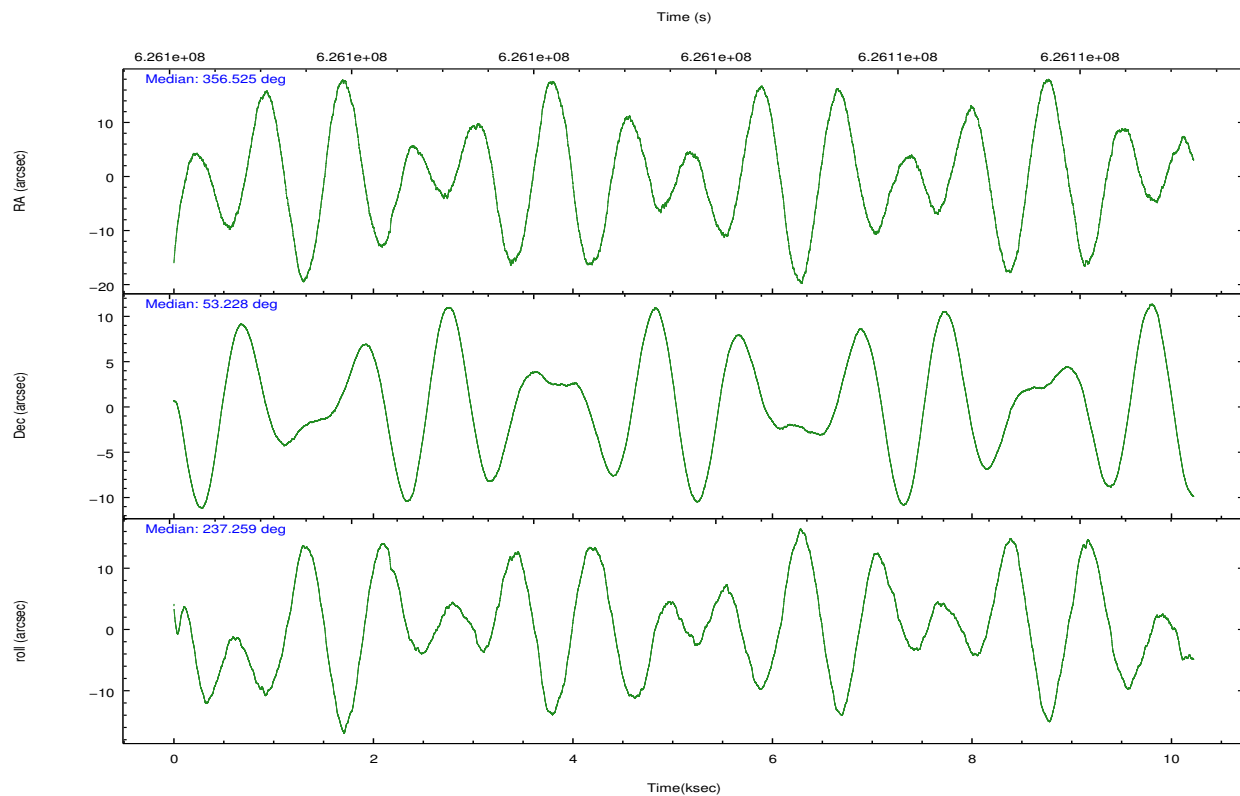
2.2 Compared Parameters

Parameter	Planned	Actual
Instrument	ACIS	ACIS
Detector	ACIS-5678	ACIS-5678
Grating	NONE	NONE
Data mode	FAINT	FAINT
Observation mode	POINTING	POINTING
[deg] Pointing RA	356.527018	356.5254644981607
[deg] Pointing Dec	53.254907	53.22743925307032
[deg] Pointing Roll	237.108698	237.2665660178681
[mm] SIM focus pos	-0.684267	-0.6828225247311905
[mm] SIM defocus	0	0.001444936568705701
[mm] SIM translation stage pos	-190.132523	-190.1400660498719
[mm] SIM translation stage offset	0	0.00754346686406393
[s] Observation start time (MET)	626098755.184000	626097852.1427701
Observation start date	2017-11-03T12:18:06	2017-11-03T12:04:12
[s] Observation end time (MET)	626108755.184000	626109484.86845
Observation end date	2017-11-03T15:04:46	2017-11-03T15:18:04
Read mode	TIMED	TIMED

Parameter	Planned	Actual
Obspar format version number	7	7
Obspar file type	PREDICTED	ACTUAL
Obspar update status	NONE	UPDATED
CCD I0 on	N	N
CCD I1 on	N	N
CCD I2 on	N	N
CCD I3 on	N	N
CCD S0 on	N	N
CCD S1 on	O2	Y
CCD S2 on	Y	Y
CCD S3 on	Y	Y
CCD S4 on	O1	Y
CCD S5 on	N	N
Number of optional ACIS chips dropped	0	0
On-chip summing requested	N	N
Subarray requested	NONE	NONE
Alternating exposures requested	N	N
[s] Primary exposure time	0.000000	3.1

2.3 Aspect



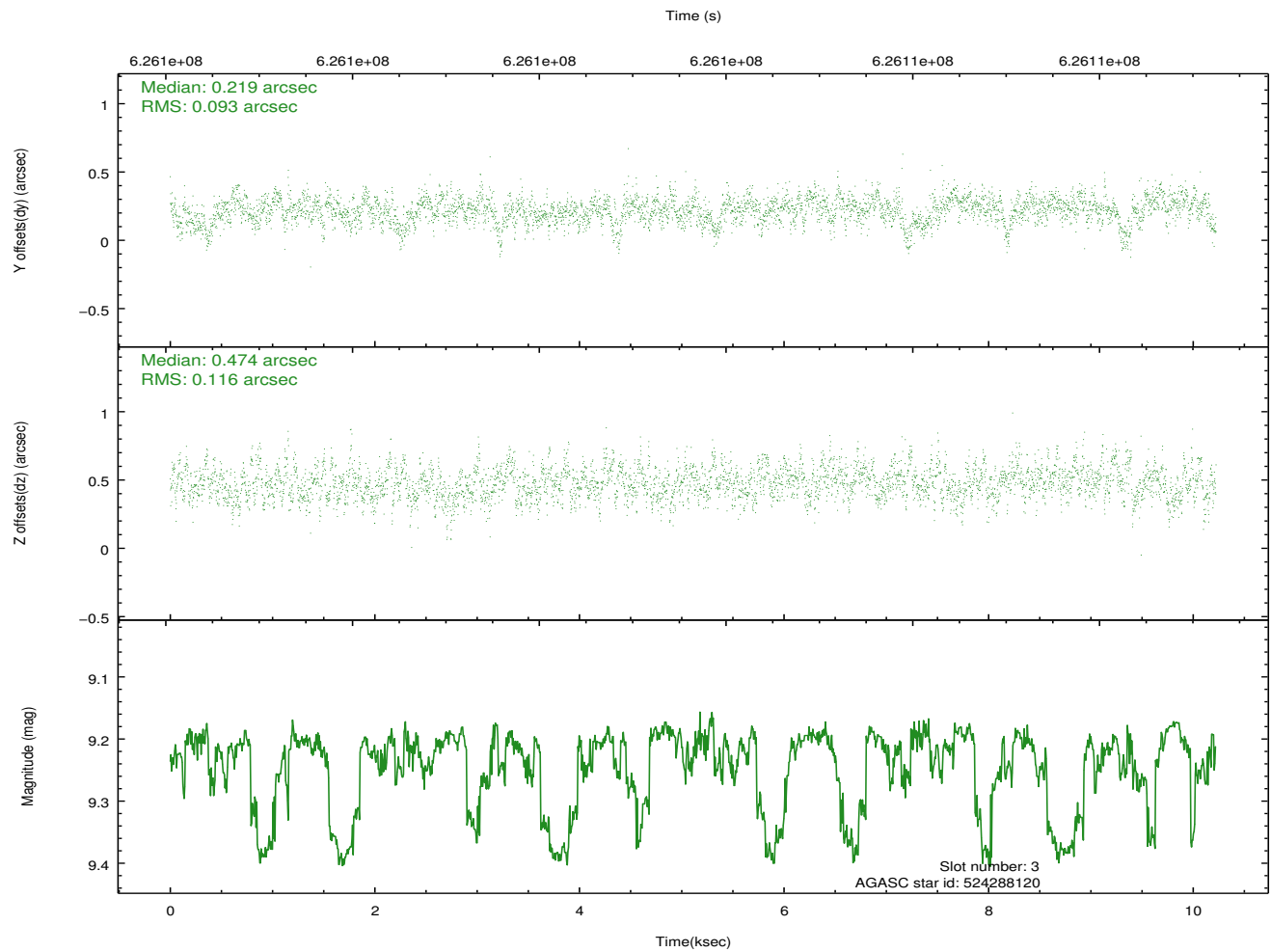
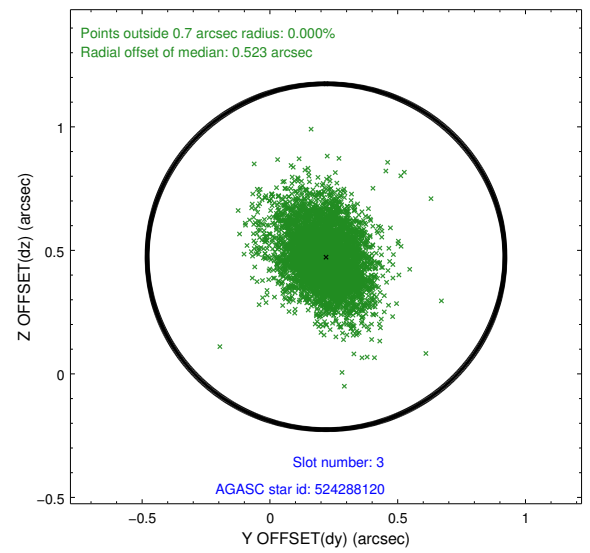
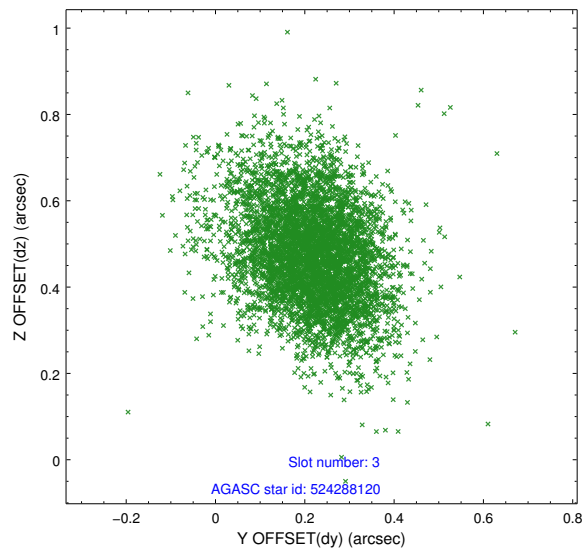


Slot Statistics

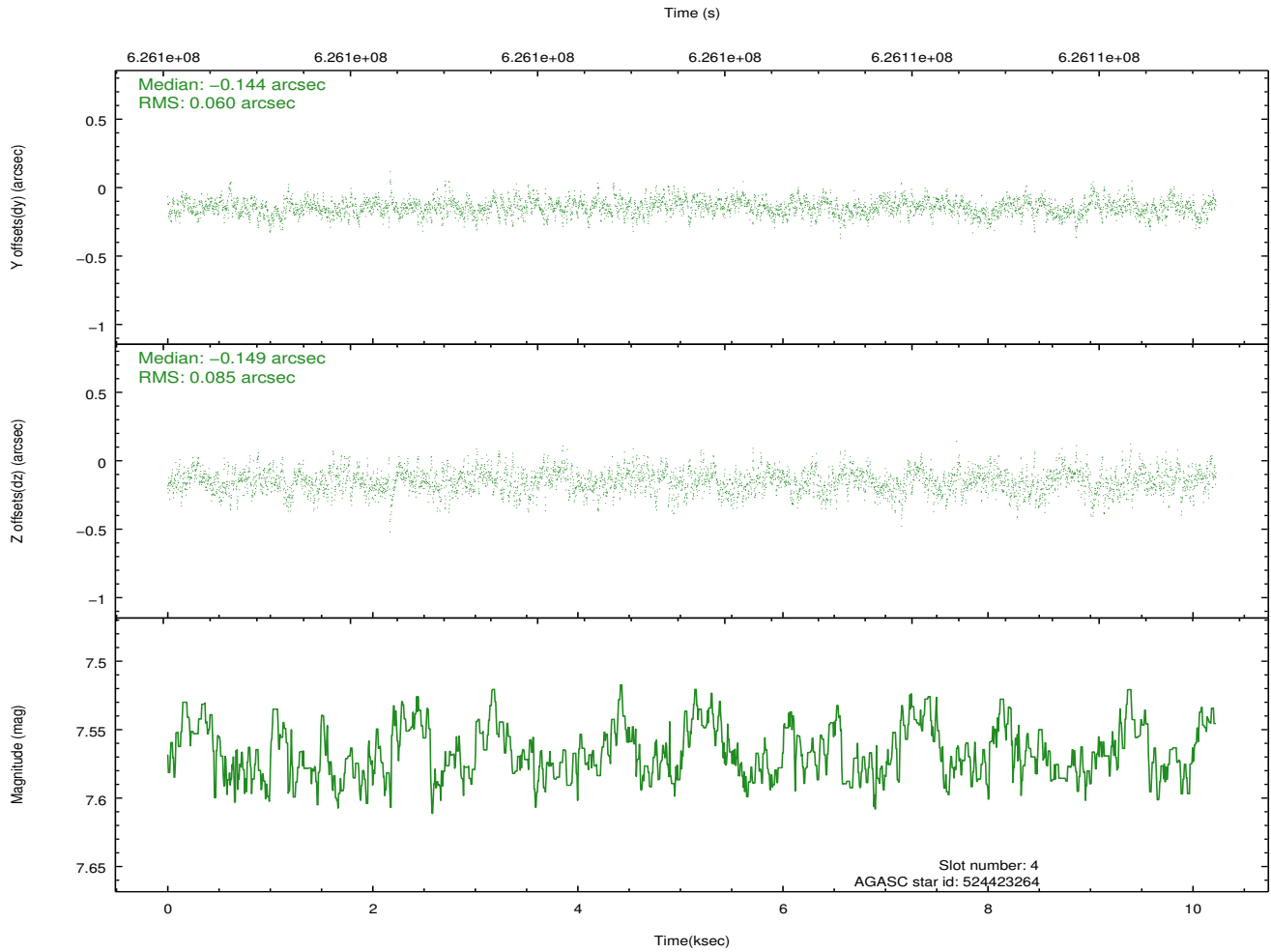
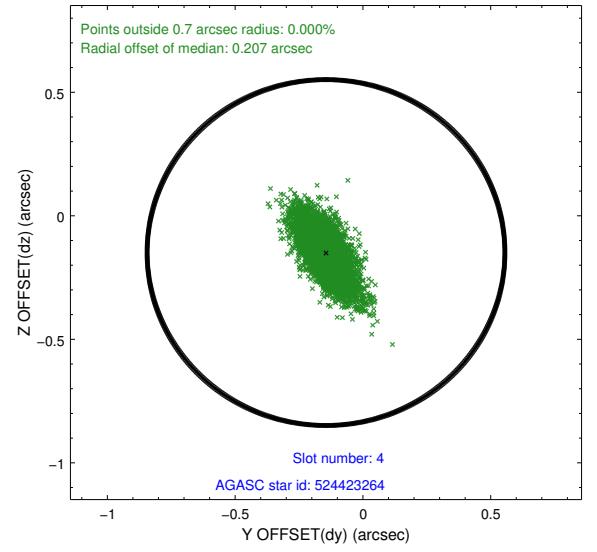
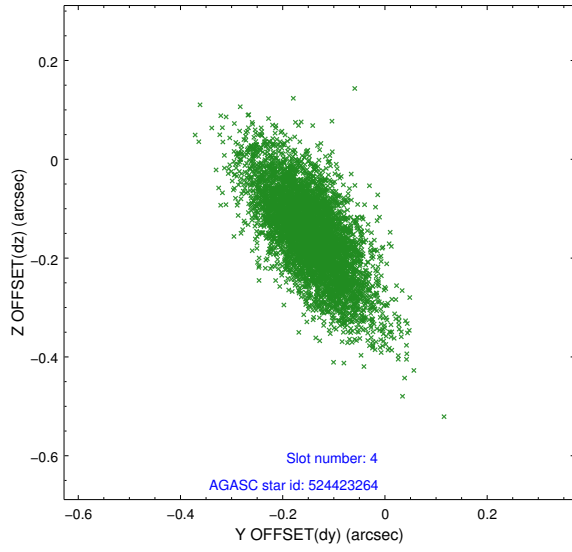
slot	status	used	id	mag	n_pts	med_dy	med_dz	dr1	dr2	ra	dec	mean_y	mean_z
0	FID		ACIS-S-1	7.10	2494	0.013	-0.094	0.009	0.015	0.000000	0.000000	922.44	-1738.58
1	FID		ACIS-S-4	7.13	2494	0.397	0.063	0.007	0.012	0.000000	0.000000	2140.47	165.23
2	FID		ACIS-S-5	7.13	2494	-0.437	0.043	0.009	0.016	0.000000	0.000000	-1826.27	159.28
3	GUIDE	used	524288120	9.23	4981	0.219	0.474	0.155	0.264	356.522919	53.684604	-1293.53	-846.87
4	GUIDE	used	524423264	7.57	4987	-0.144	-0.149	0.105	0.196	357.423346	53.461291	-1677.47	1202.81
5	GUIDE	used	524423328	8.71	4987	-0.039	0.024	0.122	0.216	357.117039	53.355822	-998.16	865.13
6	GUIDE	used	524426944	8.94	4983	-0.077	-0.250	0.133	0.225	357.093328	52.941510	275.98	1641.87
7	GUIDE	used	524293328	7.08	4986	0.048	-0.094	0.131	0.221	355.773600	53.152597	1185.97	-1169.81

2.4 Star Slots

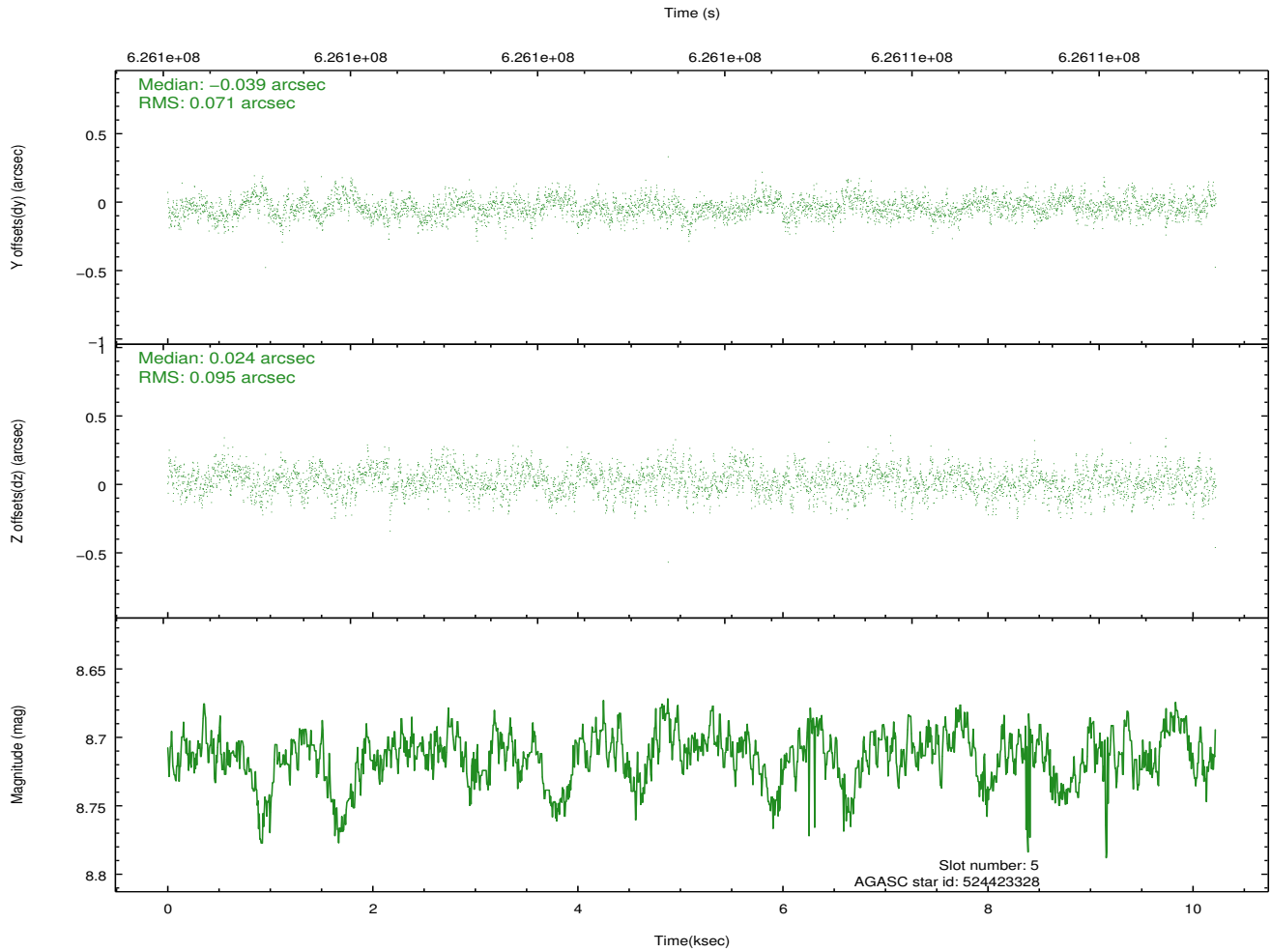
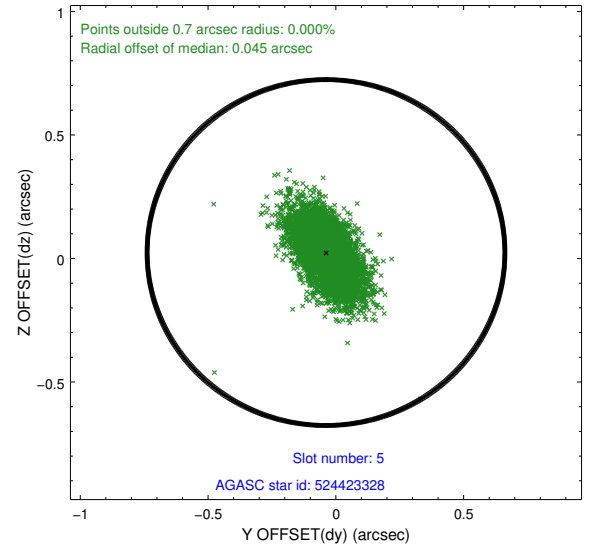
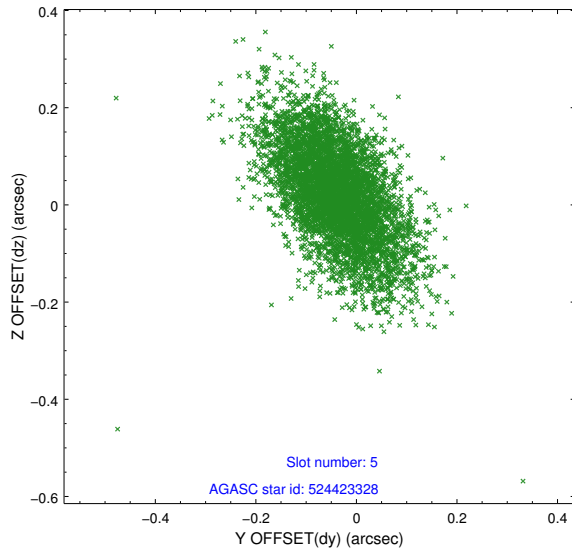
2.4.1 Slot 3



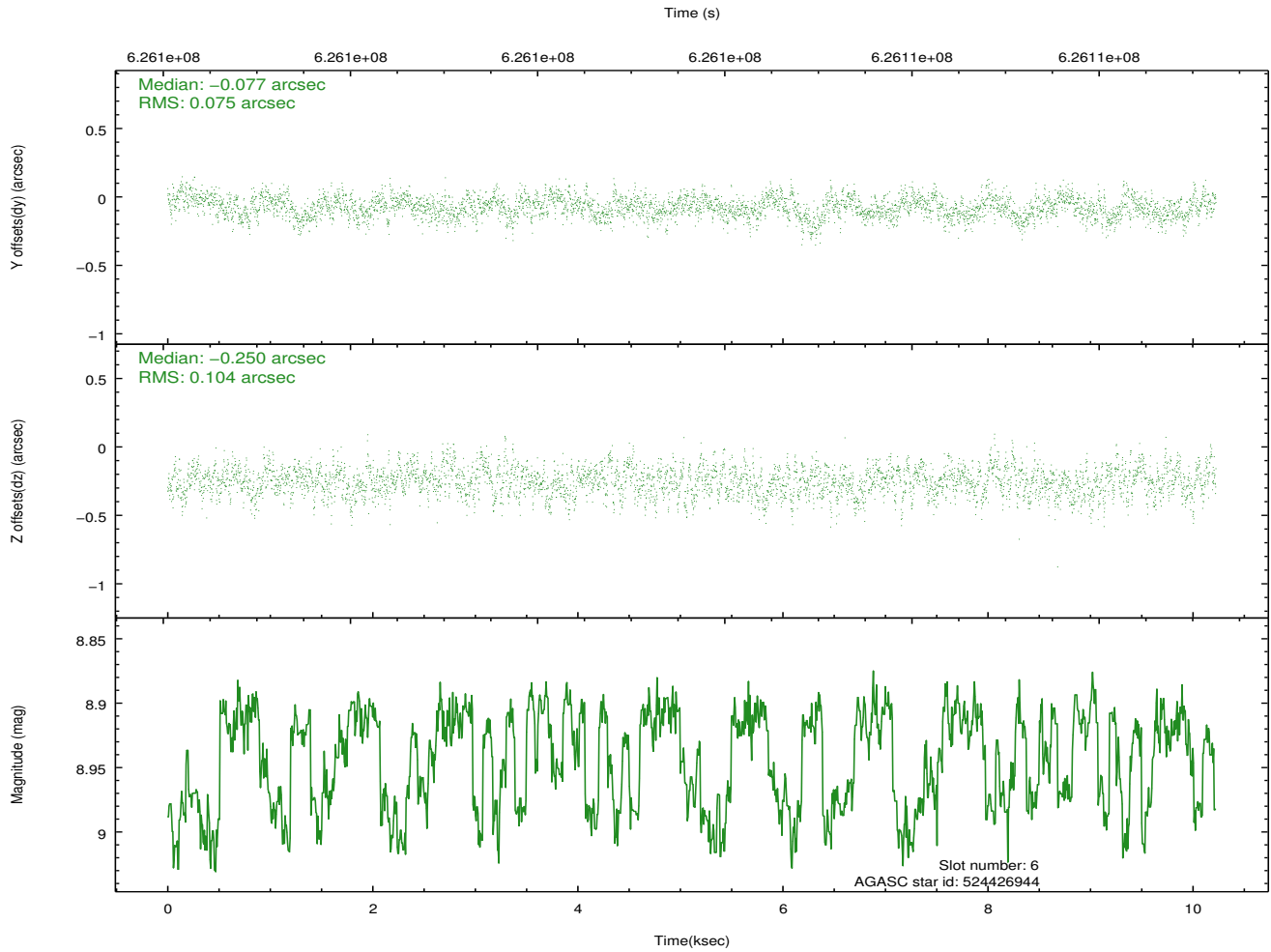
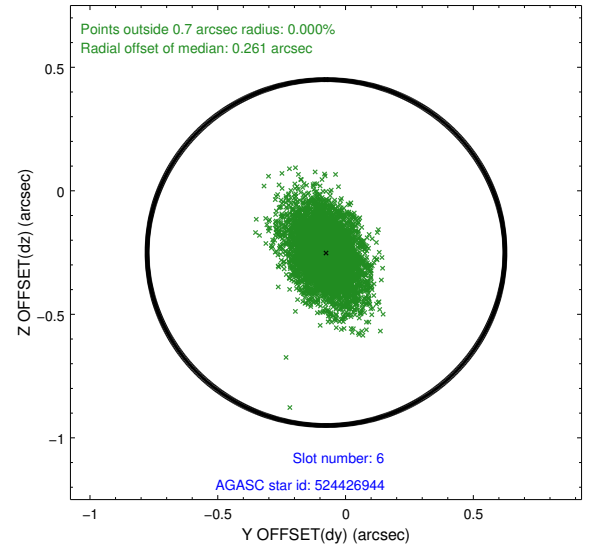
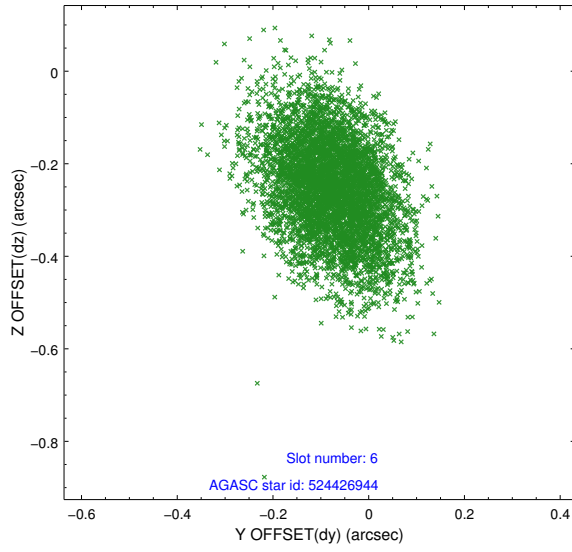
2.4.2 Slot 4



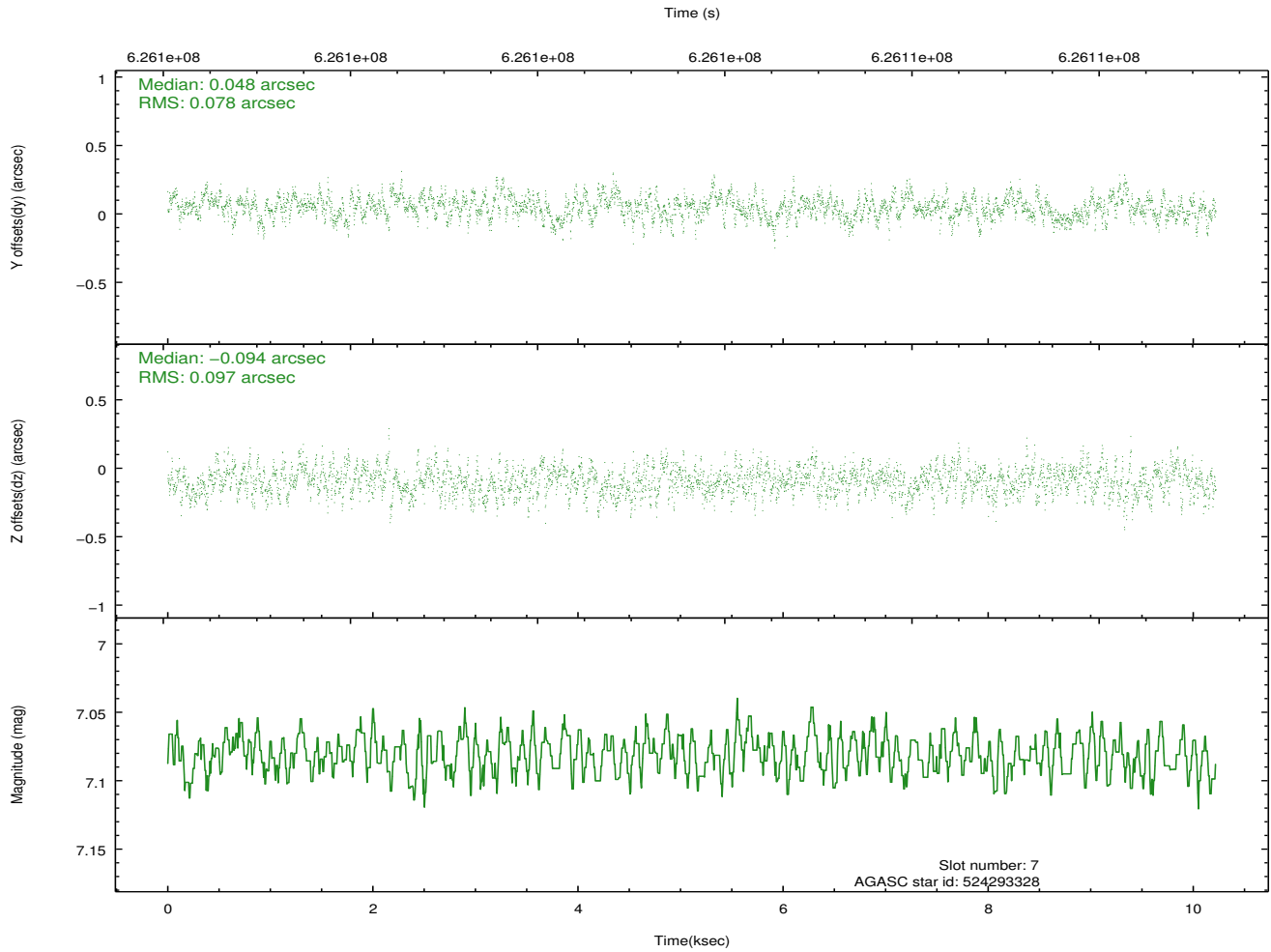
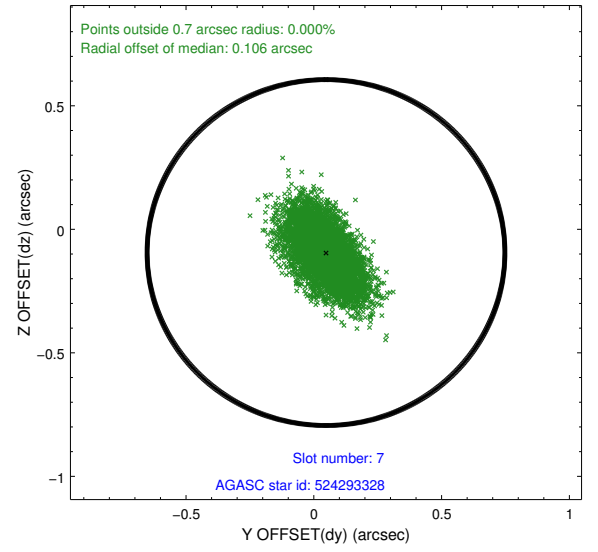
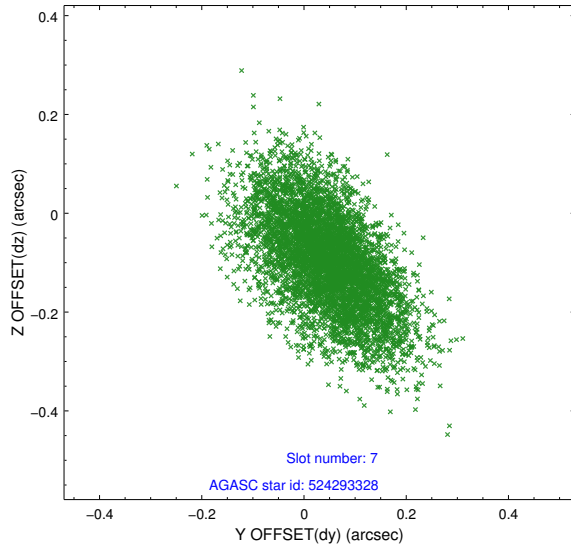
2.4.3 Slot 5



2.4.4 Slot 6

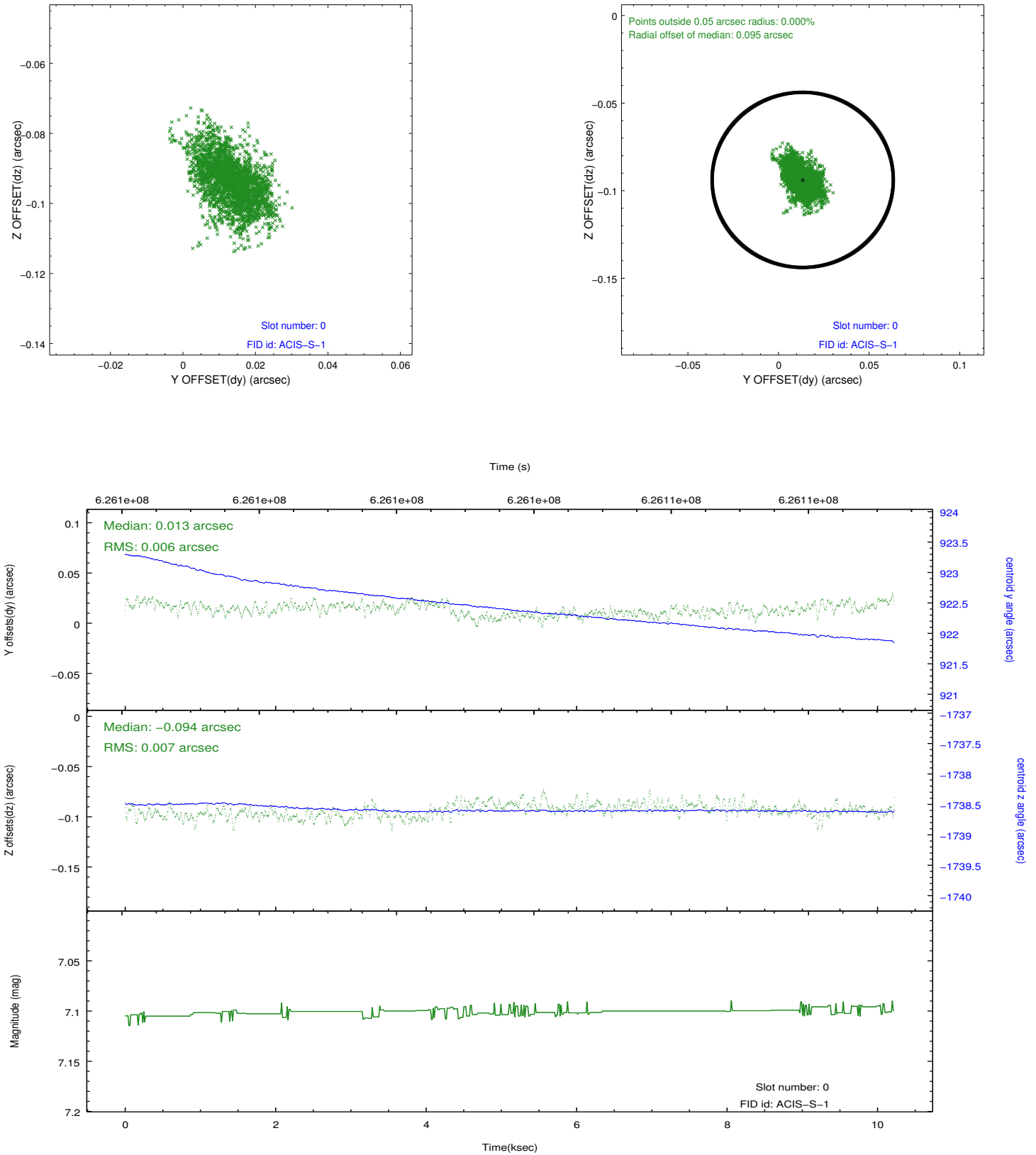


2.4.5 Slot 7

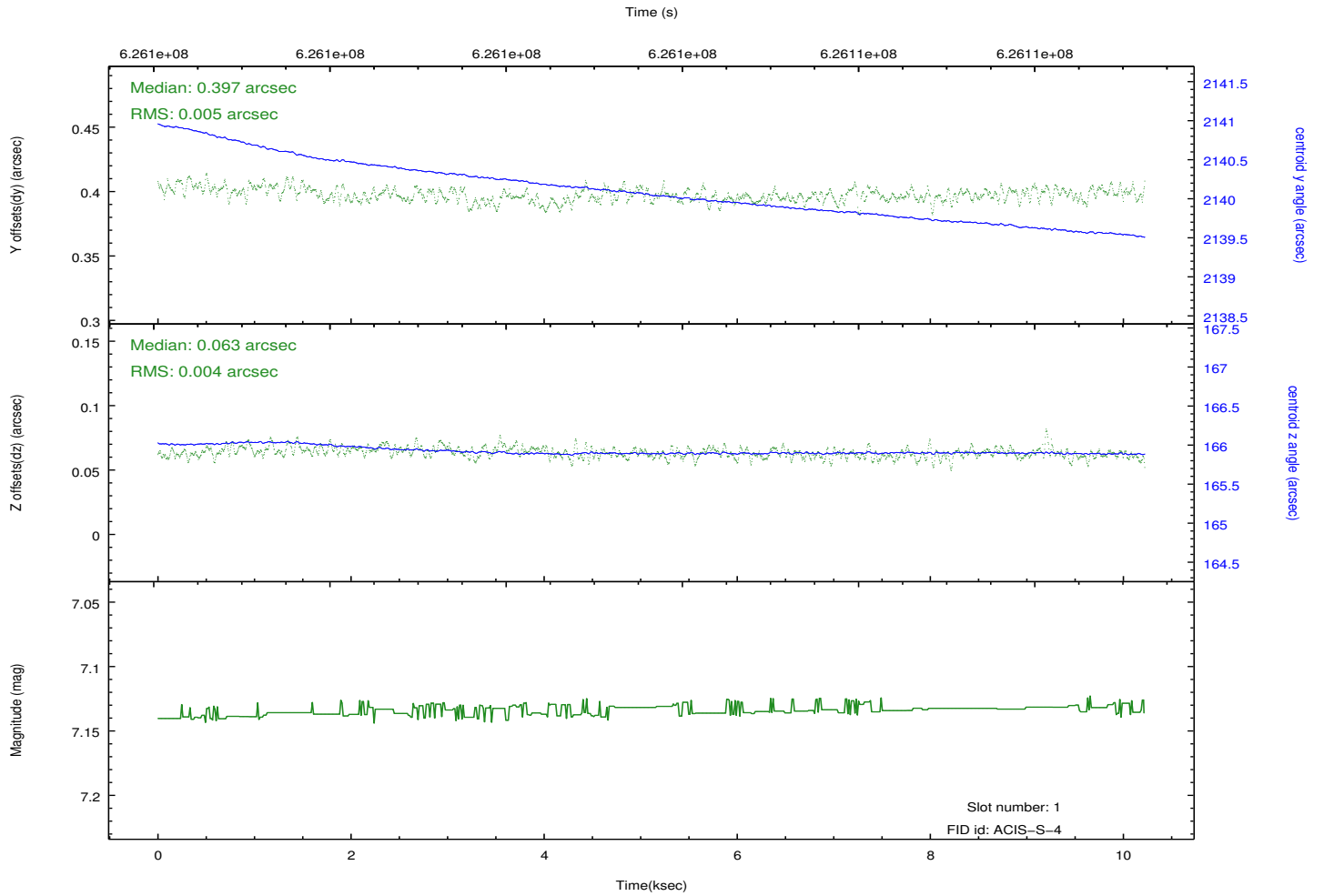
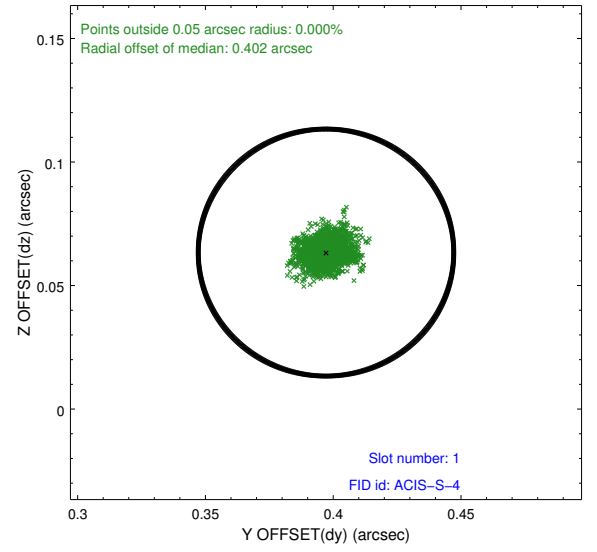
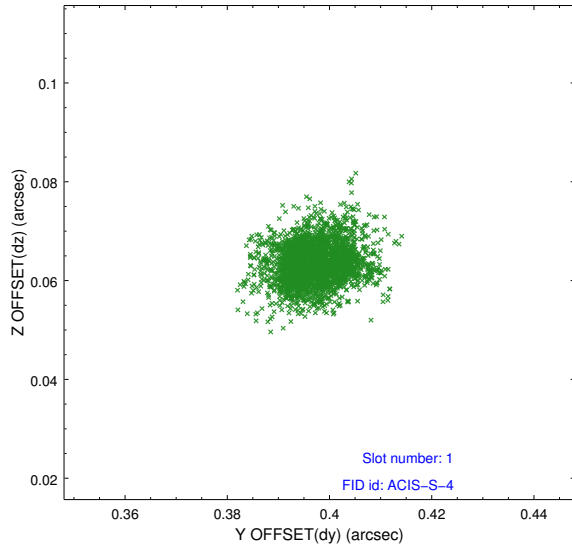


2.5 FID Slots

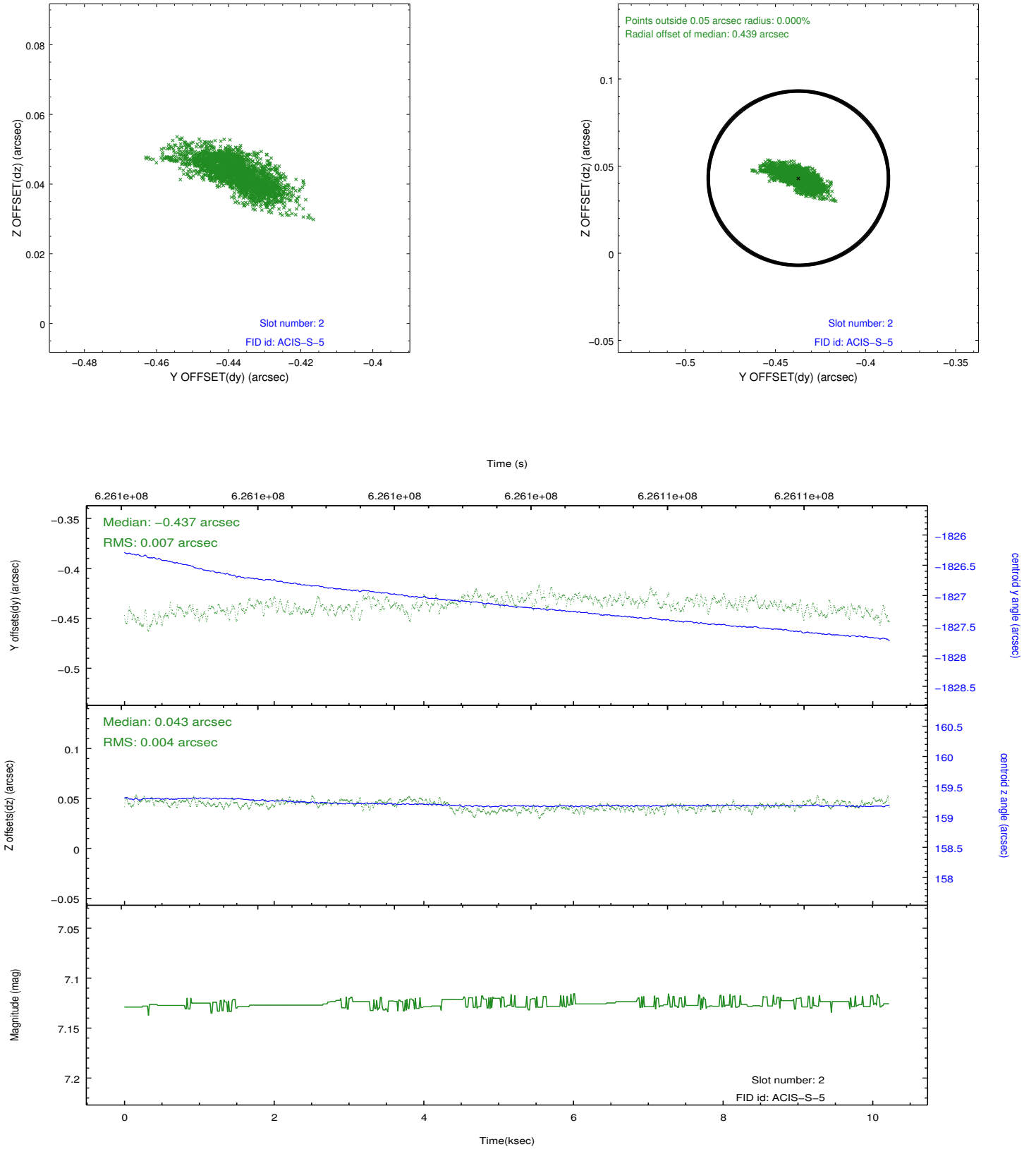
2.5.1 Slot 0



2.5.2 Slot 1



2.5.3 Slot 2



A Summary

A.1 Status

V&V Scientist	Beth Sundheim
V&V Date (YYYY-MM-DD)	2017.11.04
V&V Edition	1
V&V Disposition and Status	OK
V&V Charge Time	10.065700077534

A.2 Comments