

V&V Reference Report

L2 ASCDS Version : 10.6

Observation 20110 - L2 Version 1
Chandra X-Ray Center

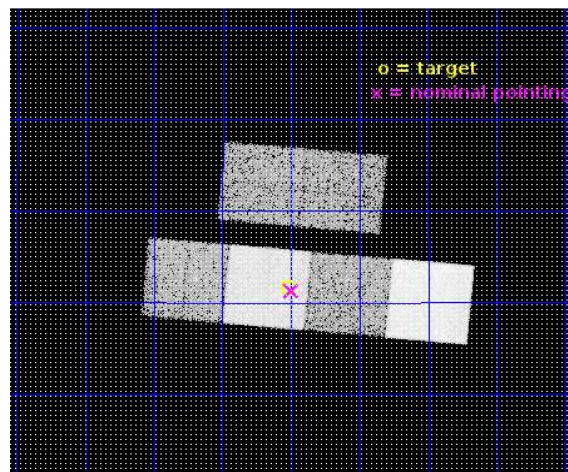
L2 Processing Date : Jul 14 2017

Contents

1	Front	2
2	OBI	3
2.1	OBI	3
2.1.1	Images	3
2.1.2	Bias	3
2.1.3	Parameters	4
2.1.4	Events	4
2.2	Compared Parameters	5
2.3	Aspect	6
2.4	Star Slots	9
2.4.1	Slot 3	9
2.4.2	Slot 4	10
2.4.3	Slot 5	11
2.4.4	Slot 6	12
2.4.5	Slot 7	13
2.5	FID Slots	14
2.5.1	Slot 0	14
2.5.2	Slot 1	15
2.5.3	Slot 2	16
A	Summary	17
A.1	Status	17
A.2	Comments	17

1 Front

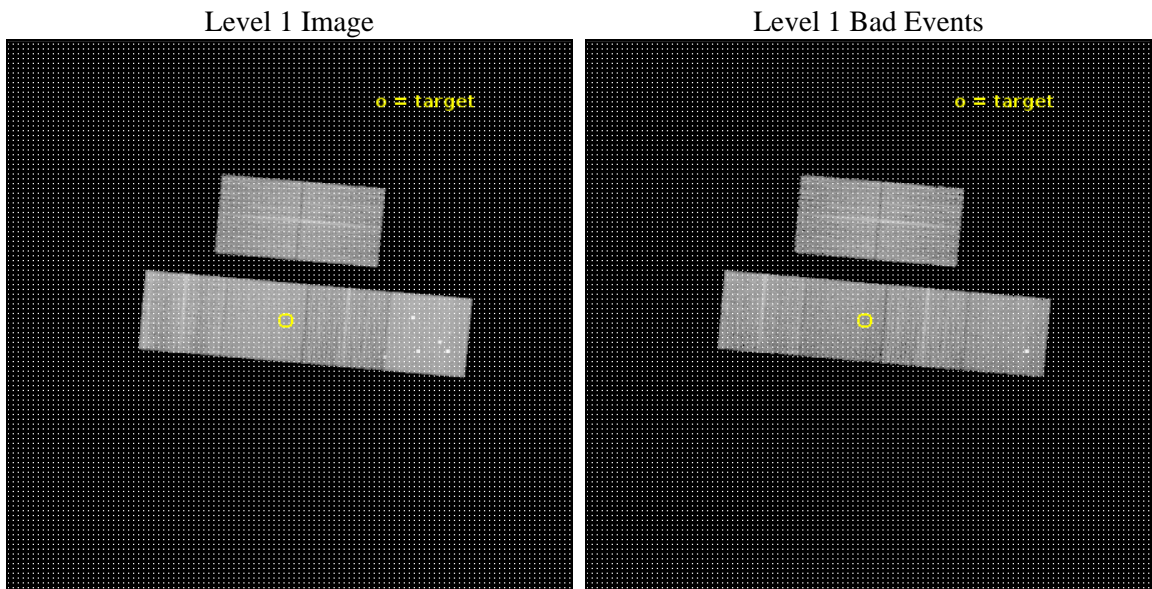
seq_num	201122	Sequence number
obs_id	20110	Observation id
title	Using the sharp Chandra's eyes to find a neutron star lurking in the wind of WR124	Proposal title
observer	Lidia Oskinova	Principal investigator
object	WR 124	Source name
dtcycle	0	
cycle	P	events from which exps? Prim/Second/Both
ra_targ	287.87875	Observer's specified target RA [deg]
dec_targ	16.860583	Observer's specified target Dec [deg]
ra_nom	287.87419355948	Nominal RA [deg]
dec_nom	16.855360681036	Nominal Dec [deg]
roll_nom	185.15795385597	Nominal Roll [deg]
revision	1	Processing version of data
ontime	13657.025691867	Sum of GTIs [s]
livetime	13484.092209283	Livetime [s]
ontime2	13657.066731811	Sum of GTIs [s]
ontime3	13656.902571797	Sum of GTIs [s]
ontime5	13656.984651804	Sum of GTIs [s]
ontime6	13656.94361186	Sum of GTIs [s]
ontime7	13657.025691867	Sum of GTIs [s]
ontime8	13656.861531854	Sum of GTIs [s]
l2events	169056	Number of level 2 events



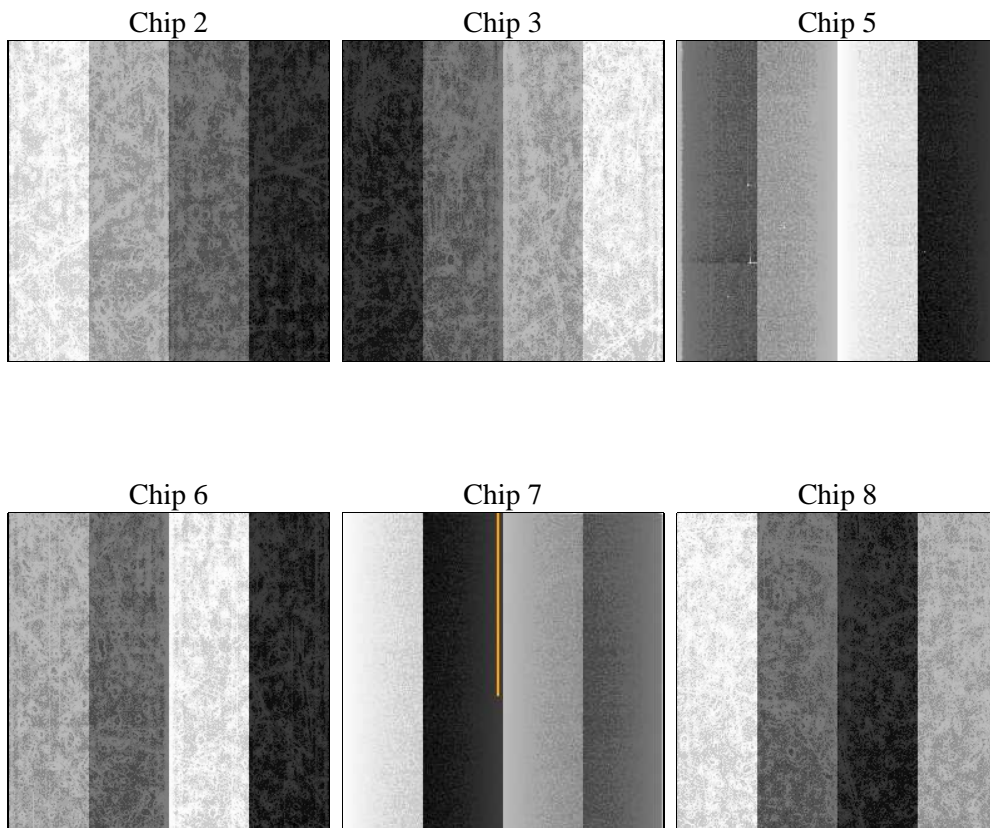
2 OBI

2.1 OBI

2.1.1 Images



2.1.2 Bias



2.1.3 Parameters

obi_num	0	Obi number	sched_exp_time	13700.000000	[s] Scheduled observation exposure time
ascdsver	10.6	Processing system revision	ontime	13657.025691867	Sum of GTIs [s]
caldsver	4.7.5	 	ontime2	13657.066731811	Sum of GTIs [s]
date	2017-07-14T14:06:37	Date and time of file creation	ontime3	13656.902571797	Sum of GTIs [s]
revision	1	Processing version of data	ontime5	13656.984651804	Sum of GTIs [s]
			ontime6	13656.94361186	Sum of GTIs [s]
			ontime7	13657.025691867	Sum of GTIs [s]
			ontime8	13656.861531854	Sum of GTIs [s]
			l1events	730519	Number of level 1 events

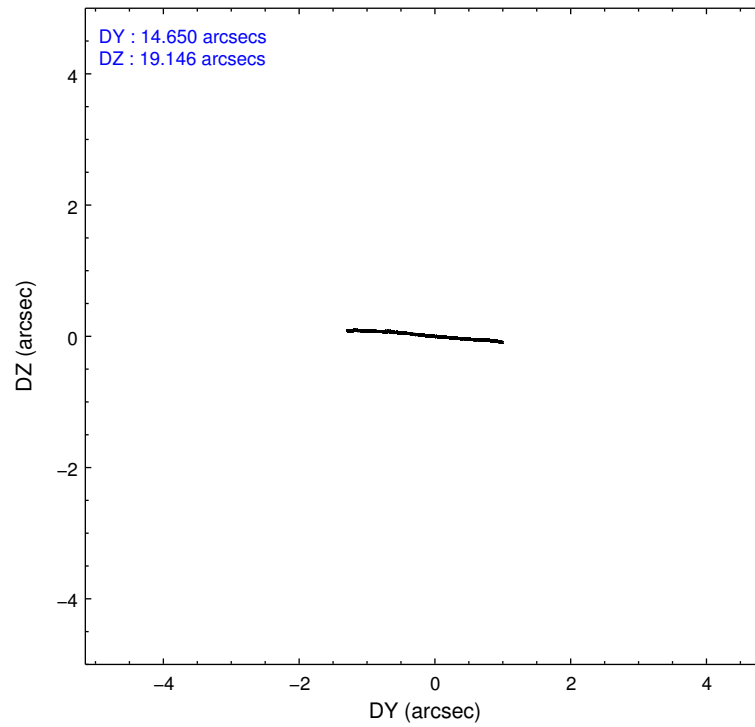
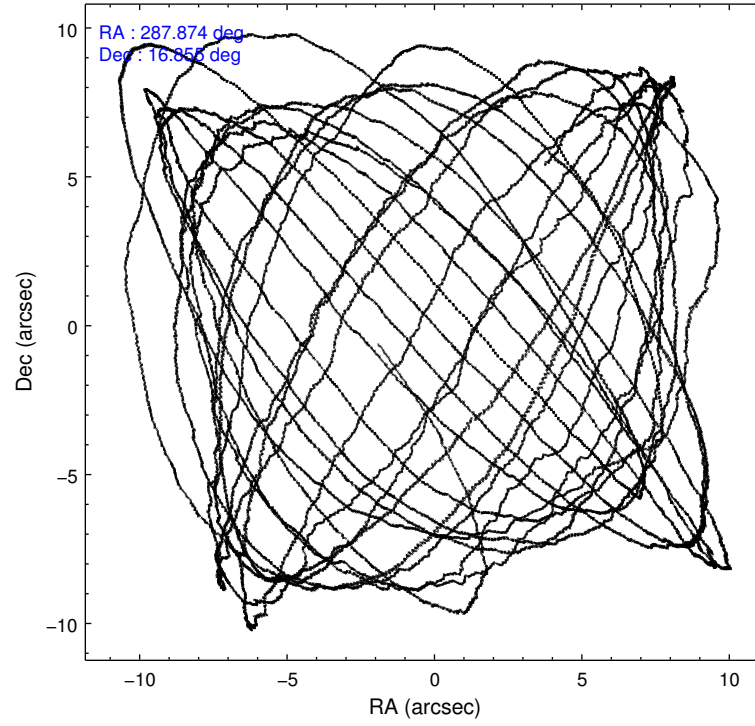
2.1.4 Events

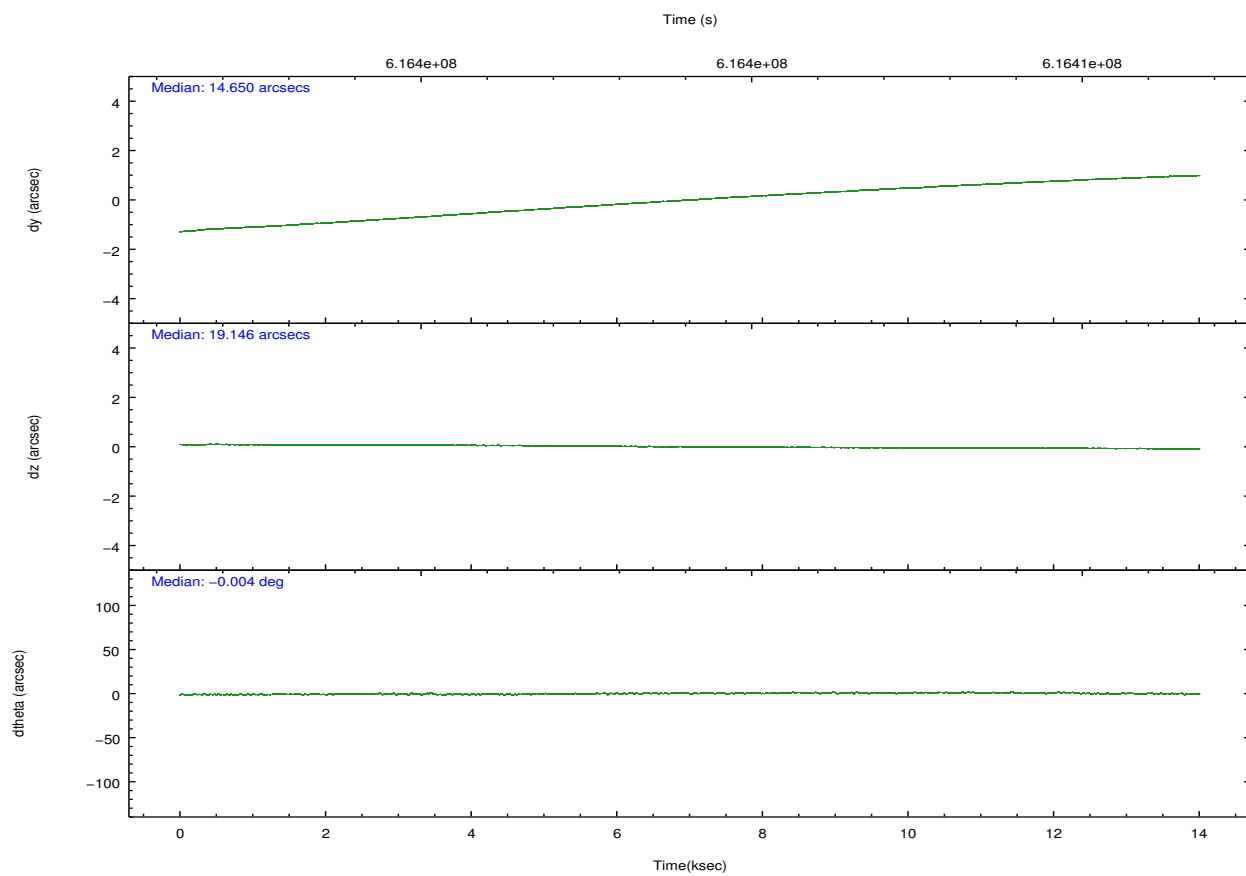
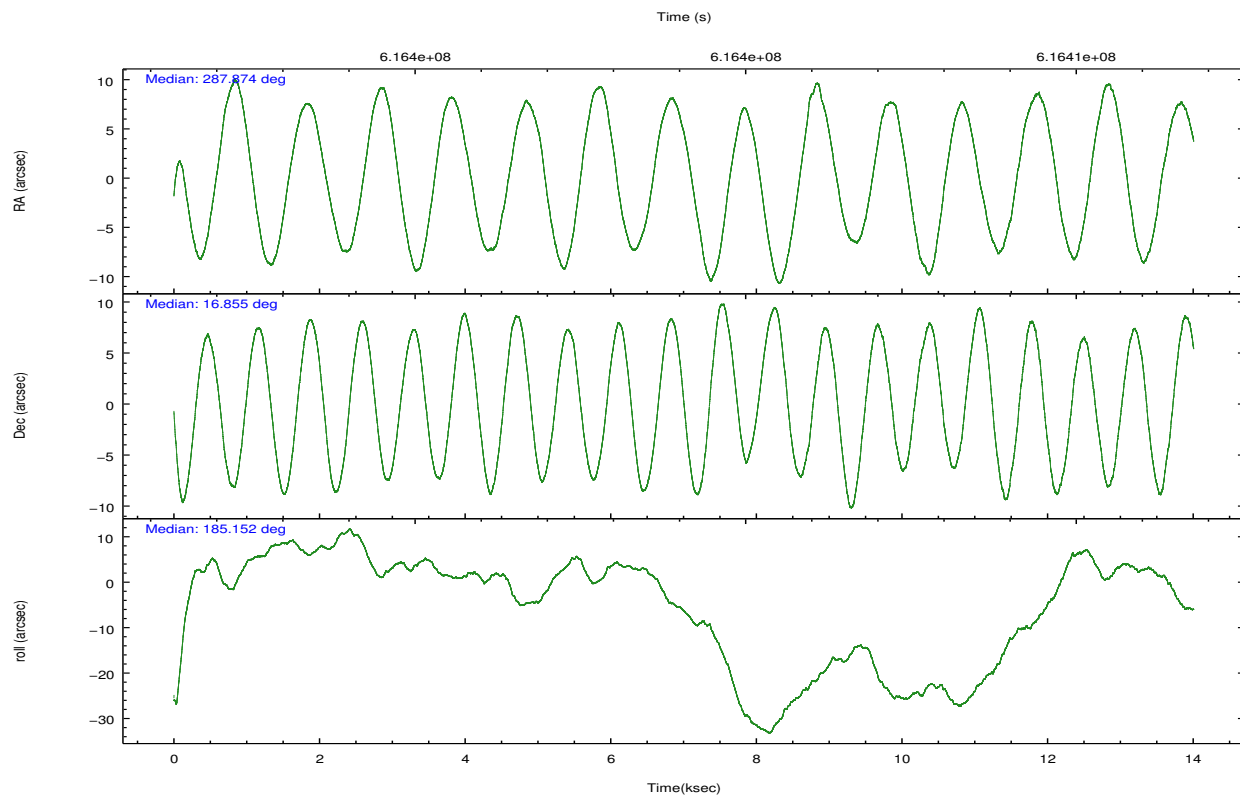
	ccd 2	ccd 3	ccd 5	ccd 6	ccd 7	ccd 8		ccd 2	ccd 3	ccd 5	ccd 6	ccd 7	ccd 8
level 1 events	101502	95599	171806	99987	129467	132158	grade 0 events	3853	3535	14453	3934	4781	10488
rejected events	90333	85283	85038	88145	72853	94787		3%	3%	8%	3%	3%	7%
rejected %	88%	89%	49%	88%	56%	71%	grade 1 events	67	56	370	53	182	126
								0%	0%	0%	0%	0%	0%
							grade 2 events	2899	2267	25052	2853	11996	9031
								2%	2%	14%	2%	9%	6%
							grade 3 events	1132	1072	2803	1189	4537	4080
								1%	1%	1%	1%	3%	3%
							grade 4 events	1094	1167	2802	1163	4724	3765
								1%	1%	1%	1%	3%	2%
							grade 5 events	4150	4653	11535	4835	13239	7176
								4%	4%	6%	4%	10%	5%
							grade 6 events	2194	2280	41688	2704	30591	10019
								2%	2%	24%	2%	23%	7%
							grade 7 events	86113	80569	73103	83256	59417	87473
								84%	84%	42%	83%	45%	66%

2.2 Compared Parameters

Parameter	Planned	Actual	Parameter	Planned	Actual
Instrument	ACIS	ACIS	Obspar format version number	7	7
Detector	ACIS-235678	ACIS-235678	Obspar file type	PREDICTED	ACTUAL
Grating	NONE	NONE	Obspar update status	NONE	UPDATED
Data mode	FAINT	FAINT	CCD I0 on	N	N
Observation mode	POINTING	POINTING	CCD I1 on	N	N
[deg] Pointing RA	287.897419	287.8741935594768	CCD I2 on	Y	Y
[deg] Pointing Dec	16.871481	16.85536068103562	CCD I3 on	Y	Y
[deg] Pointing Roll	184.994586	185.1579538559654	CCD S0 on	N	N
[mm] SIM focus pos	-0.684267	-0.6828225247311905	CCD S1 on	O1	Y
[mm] SIM defocus	0	0.001444936568705701	CCD S2 on	Y	Y
[mm] SIM translation stage pos	-190.132523	-190.1425803651734	CCD S3 on	Y	Y
[mm] SIM translation stage offset	0	0.01005778216563158	CCD S4 on	Y	Y
[s] Observation start time (MET)	616397379.184000	616396353.16284	CCD S5 on	N	N
Observation start date	2017-07-14T05:28:30	2017-07-14T05:12:33	Number of optional ACIS chips dropped	0	0
[s] Observation end time (MET)	616411079.184000	616412039.76375	On-chip summing requested	N	N
Observation end date	2017-07-14T09:16:50	2017-07-14T09:33:59	Subarray requested	NONE	NONE
Read mode	TIMED	TIMED	Alternating exposures requested	N	N
			[s] Primary exposure time	0.000000	3.2

2.3 Aspect



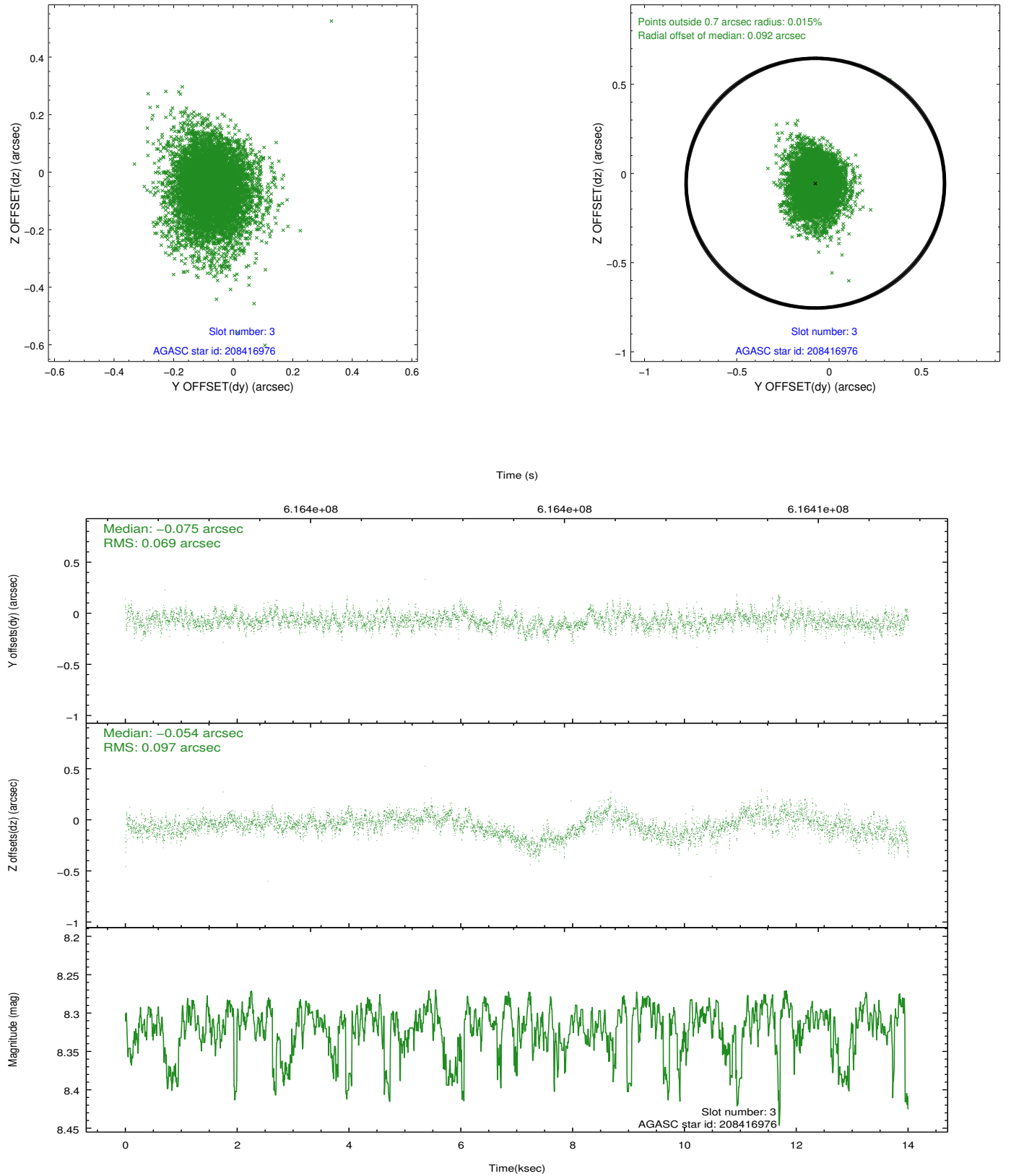


Slot Statistics

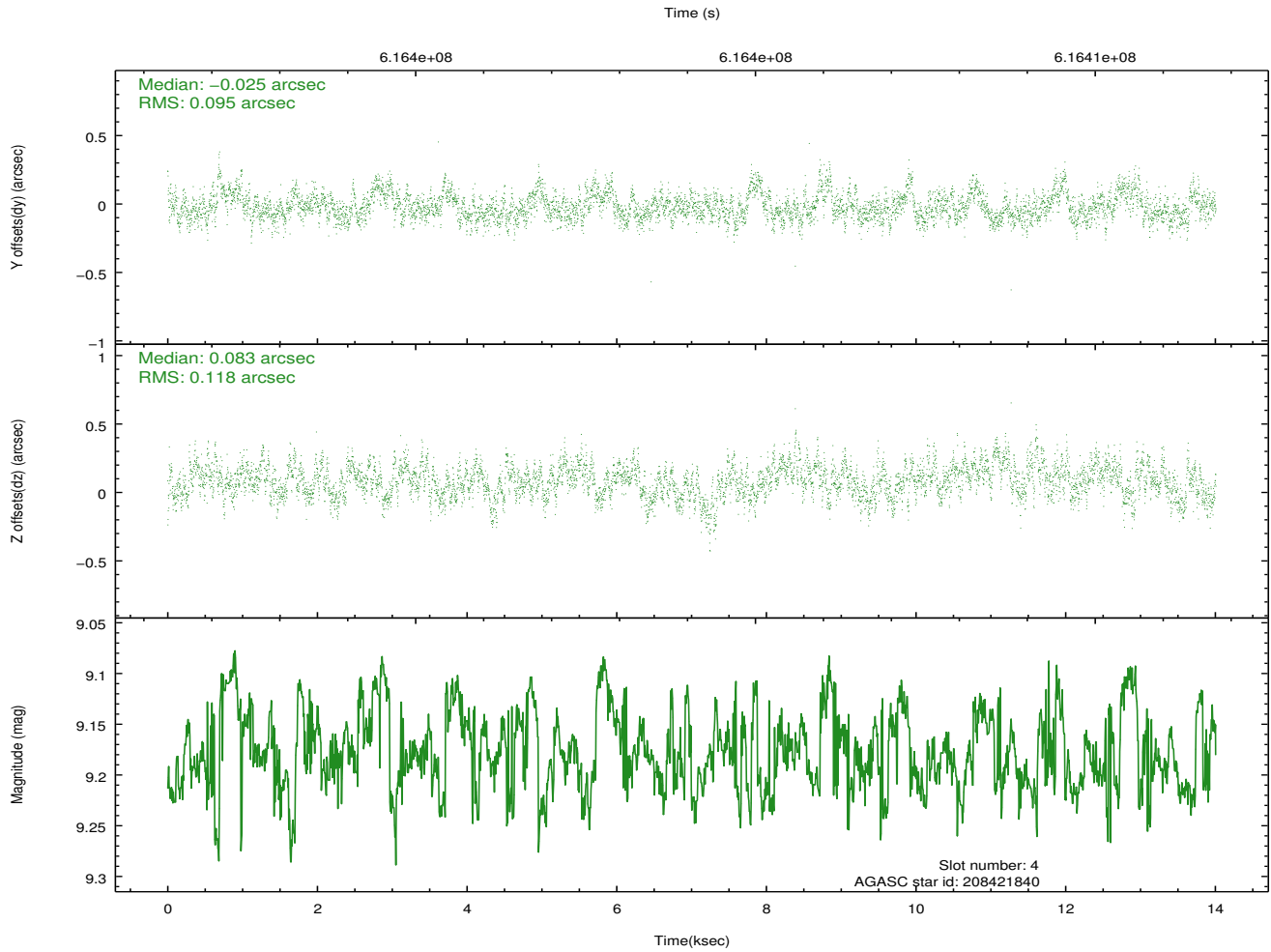
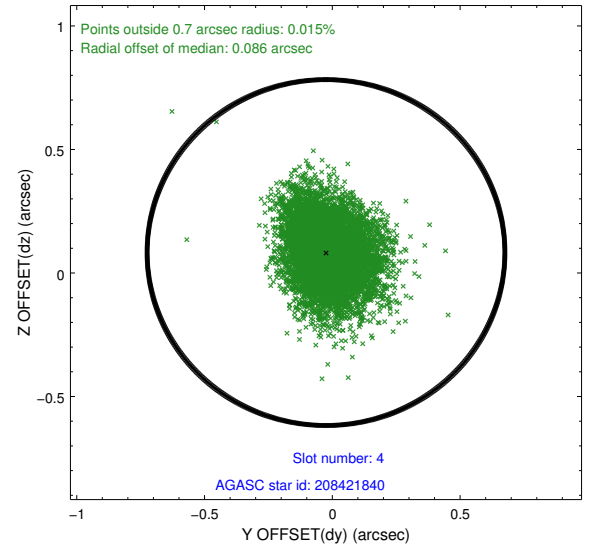
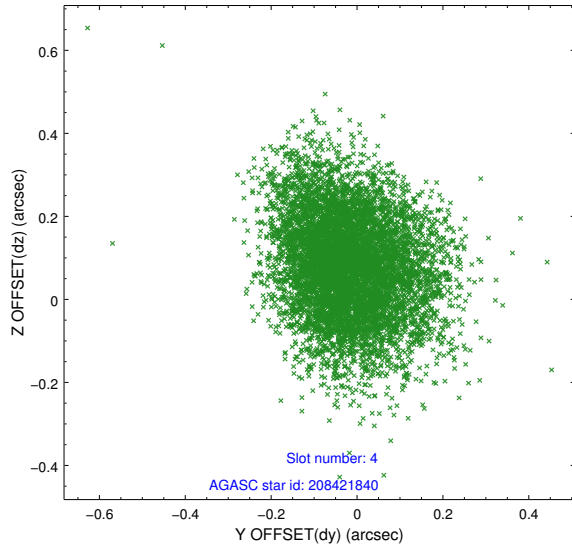
slot	status	used	id	mag	n_pts	med_dy	med_dz	dr1	dr2	ra	dec	mean_y	mean_z
0	FID		ACIS-S-2	7.02	3417	-0.202	-0.109	0.018	0.041	0.000000	0.000000	-767.74	-1740.71
1	FID		ACIS-S-4	7.13	3417	0.509	0.127	0.012	0.036	0.000000	0.000000	2146.07	167.68
2	FID		ACIS-S-5	7.13	3417	-0.339	-0.007	0.014	0.022	0.000000	0.000000	-1820.31	161.57
3	GUIDE	used	208416976	8.32	6828	-0.075	-0.054	0.123	0.212	287.326965	17.073967	1893.25	-898.77
4	GUIDE	used	208421840	9.18	6826	-0.025	0.083	0.160	0.262	287.570311	16.918850	1108.11	-268.69
5	GUIDE	used	209596088	9.31	6823	-0.035	-0.325	0.163	0.277	288.150718	16.305149	-694.01	2106.25
6	GUIDE	used	210120944	8.37	6828	0.158	0.491	0.124	0.229	288.245736	17.506735	-1389.83	-2174.49
7	GUIDE	used	209585448	7.93	6833	-0.031	-0.188	0.116	0.195	288.114724	16.850123	-740.96	144.51

2.4 Star Slots

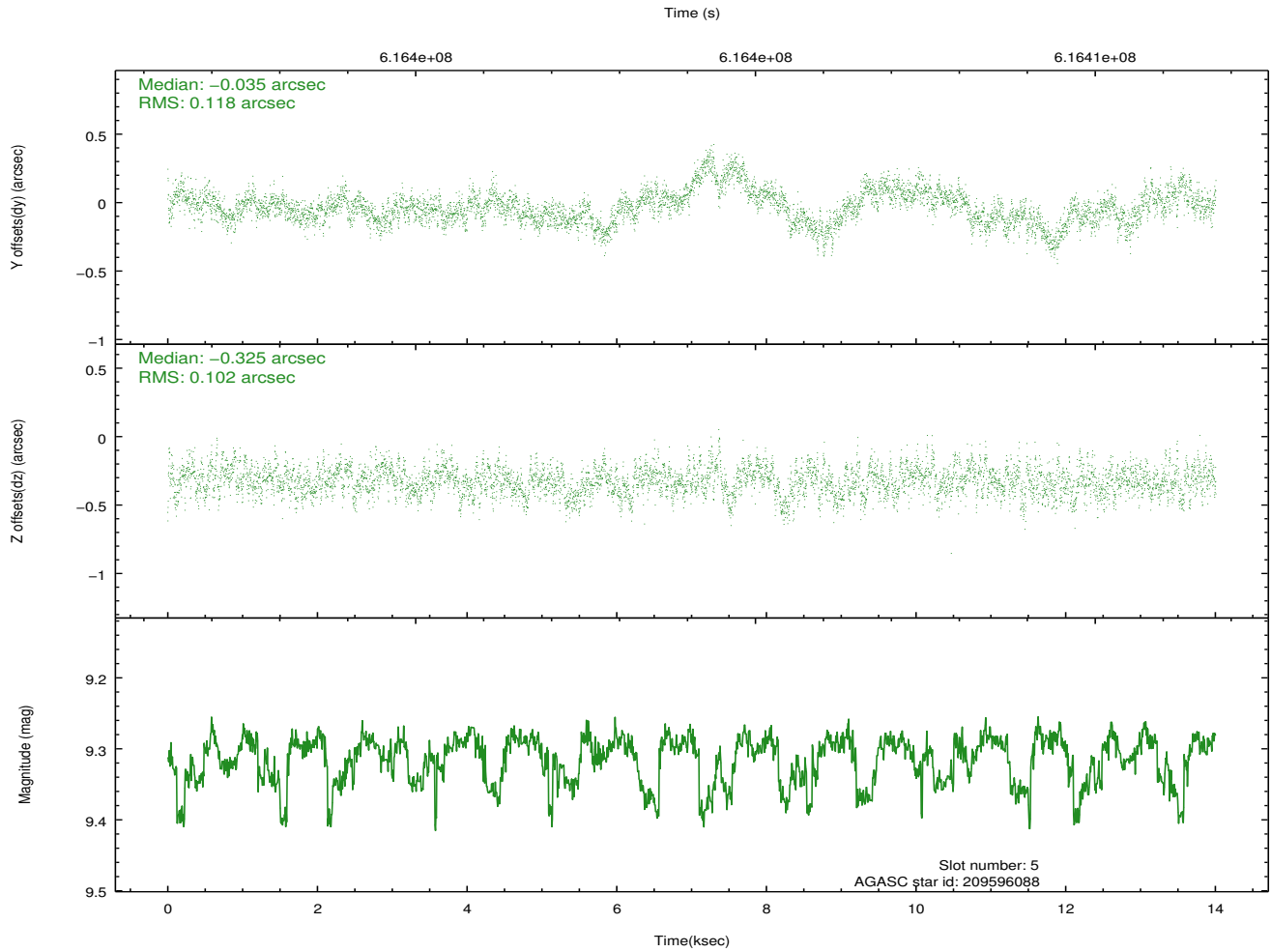
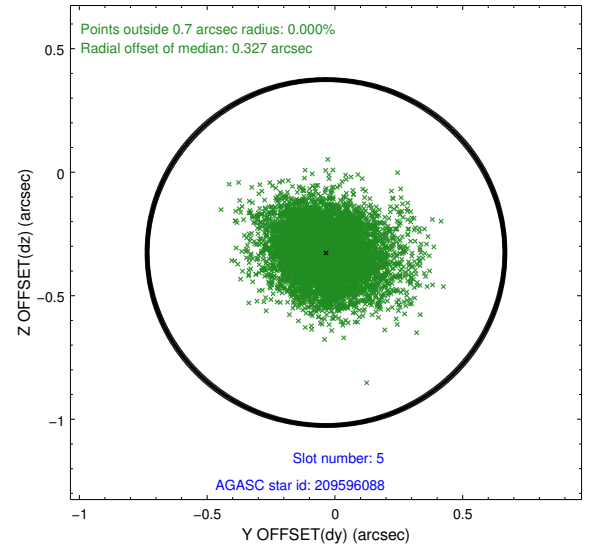
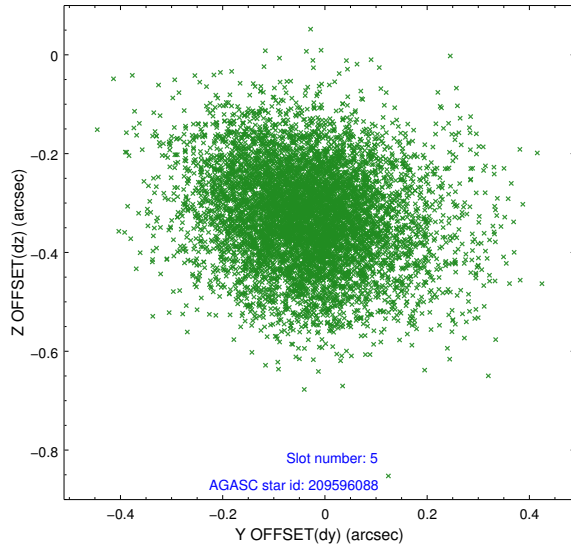
2.4.1 Slot 3



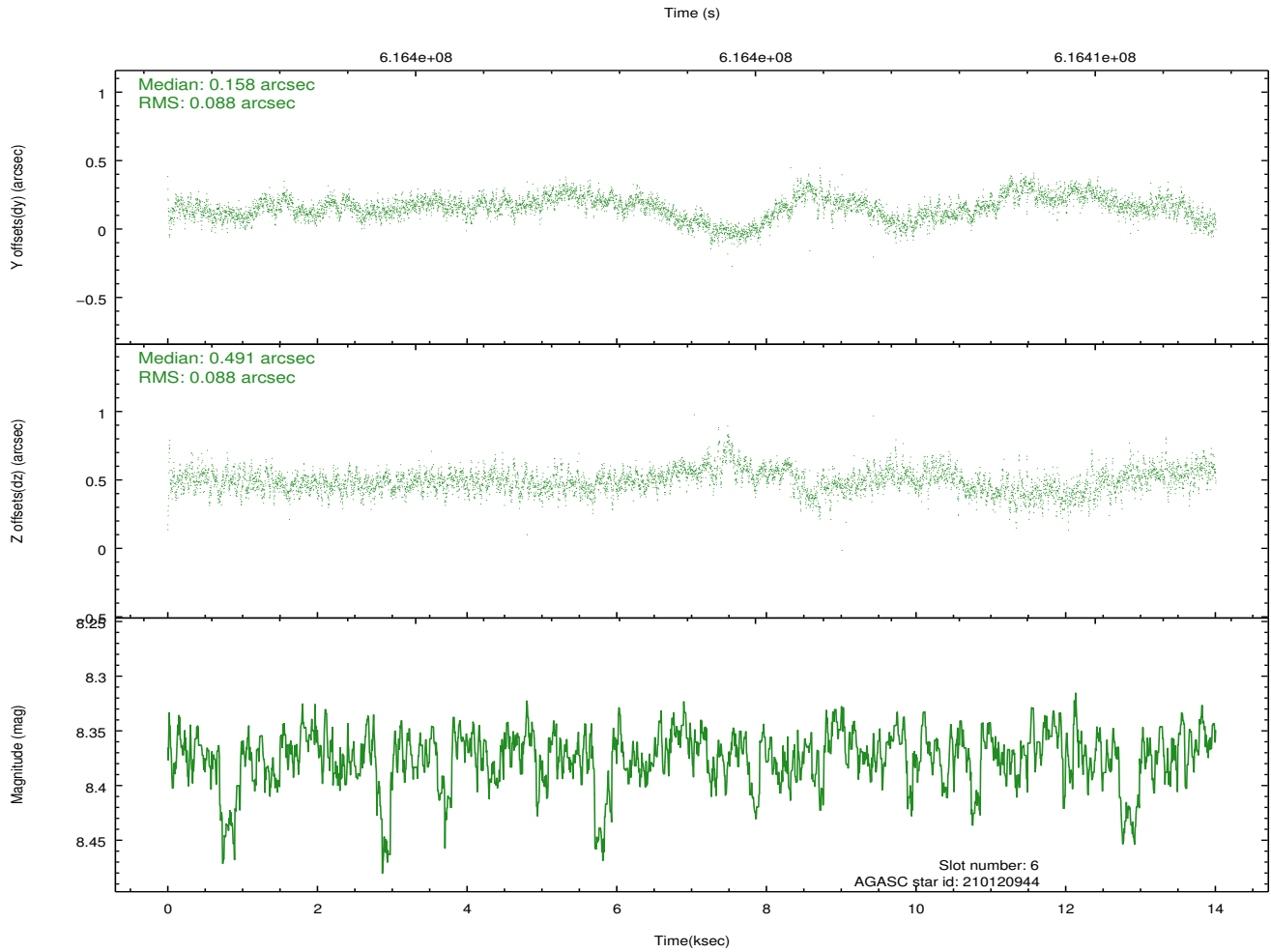
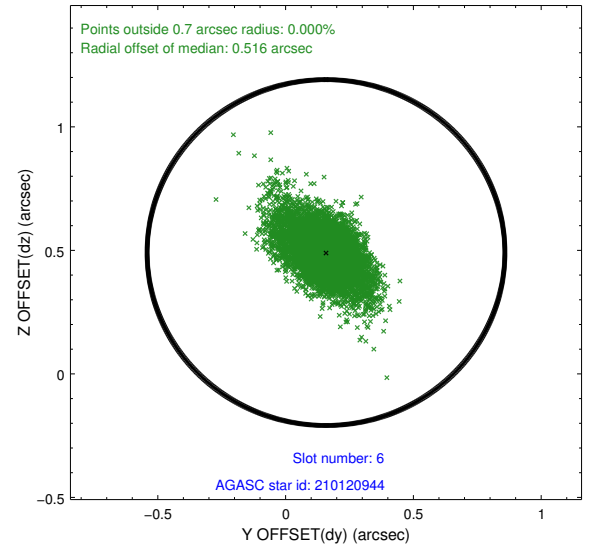
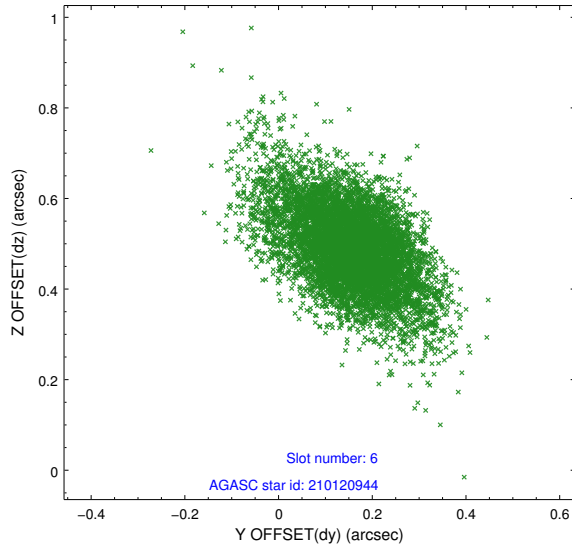
2.4.2 Slot 4



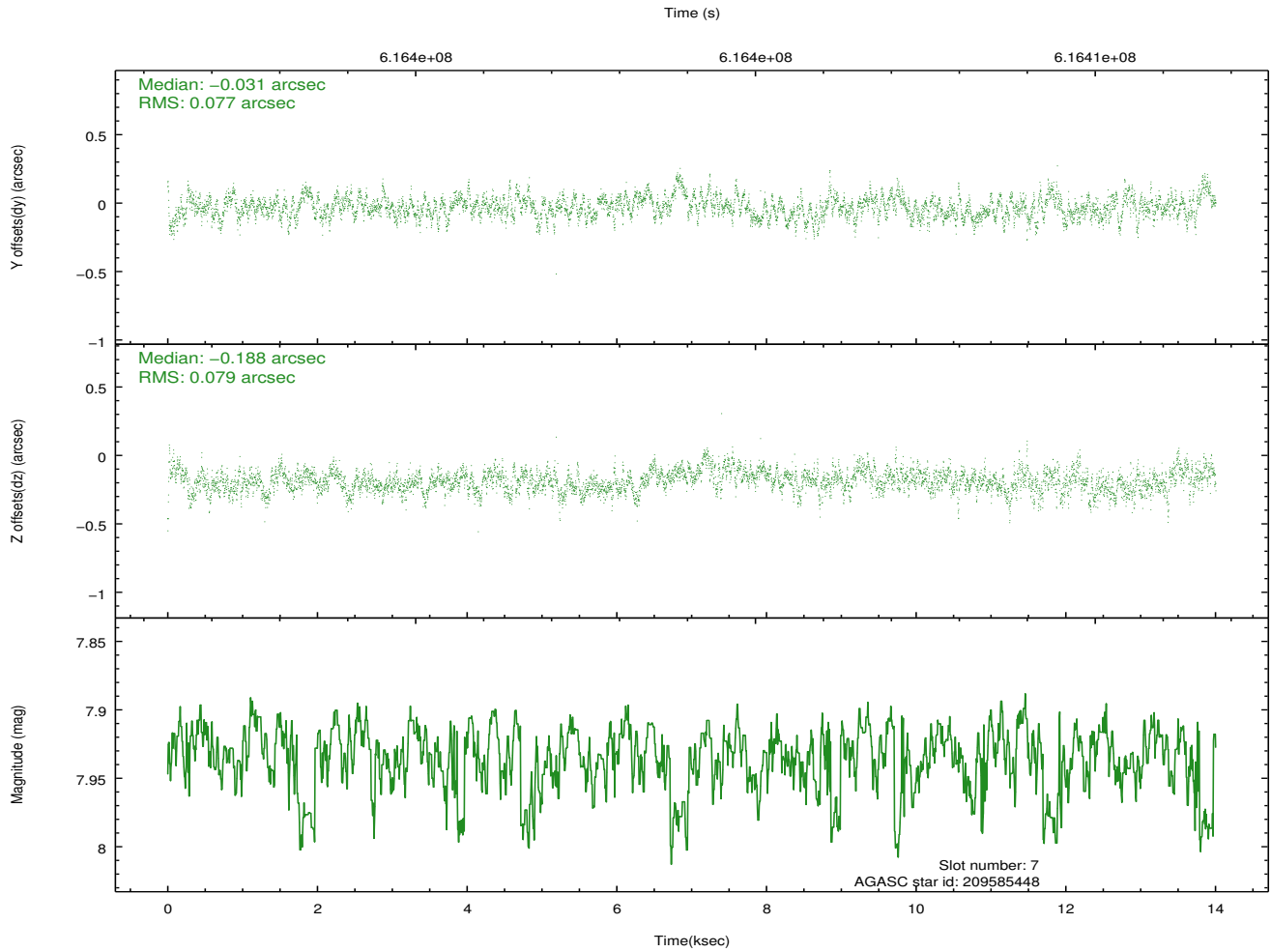
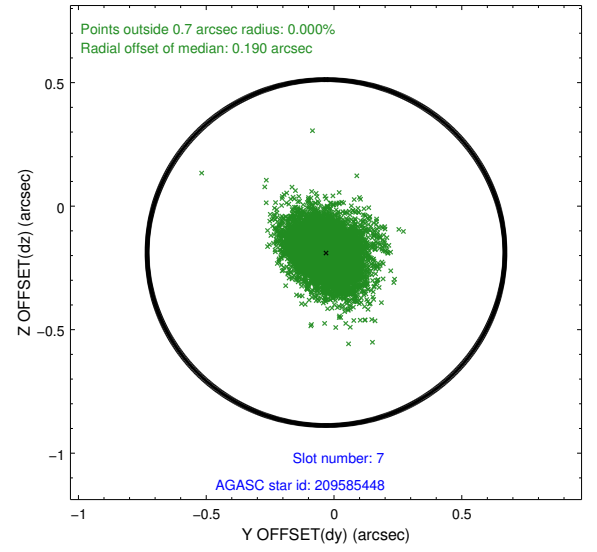
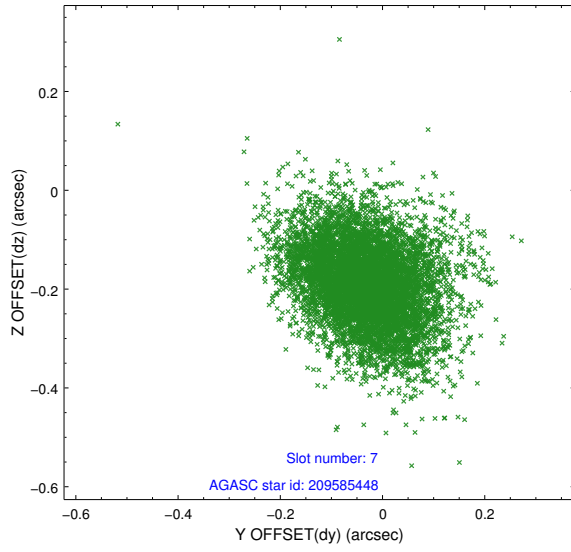
2.4.3 Slot 5



2.4.4 Slot 6

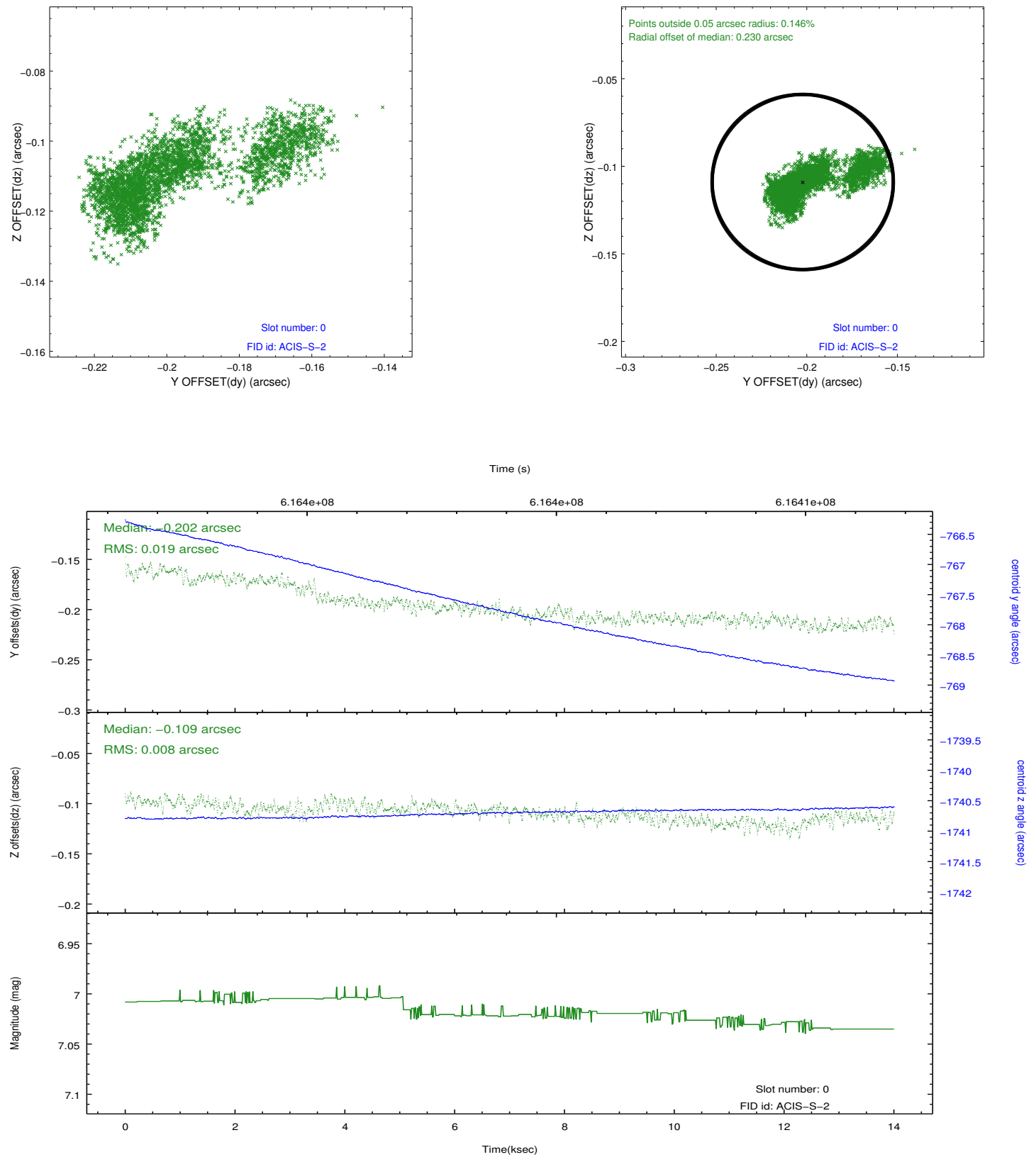


2.4.5 Slot 7

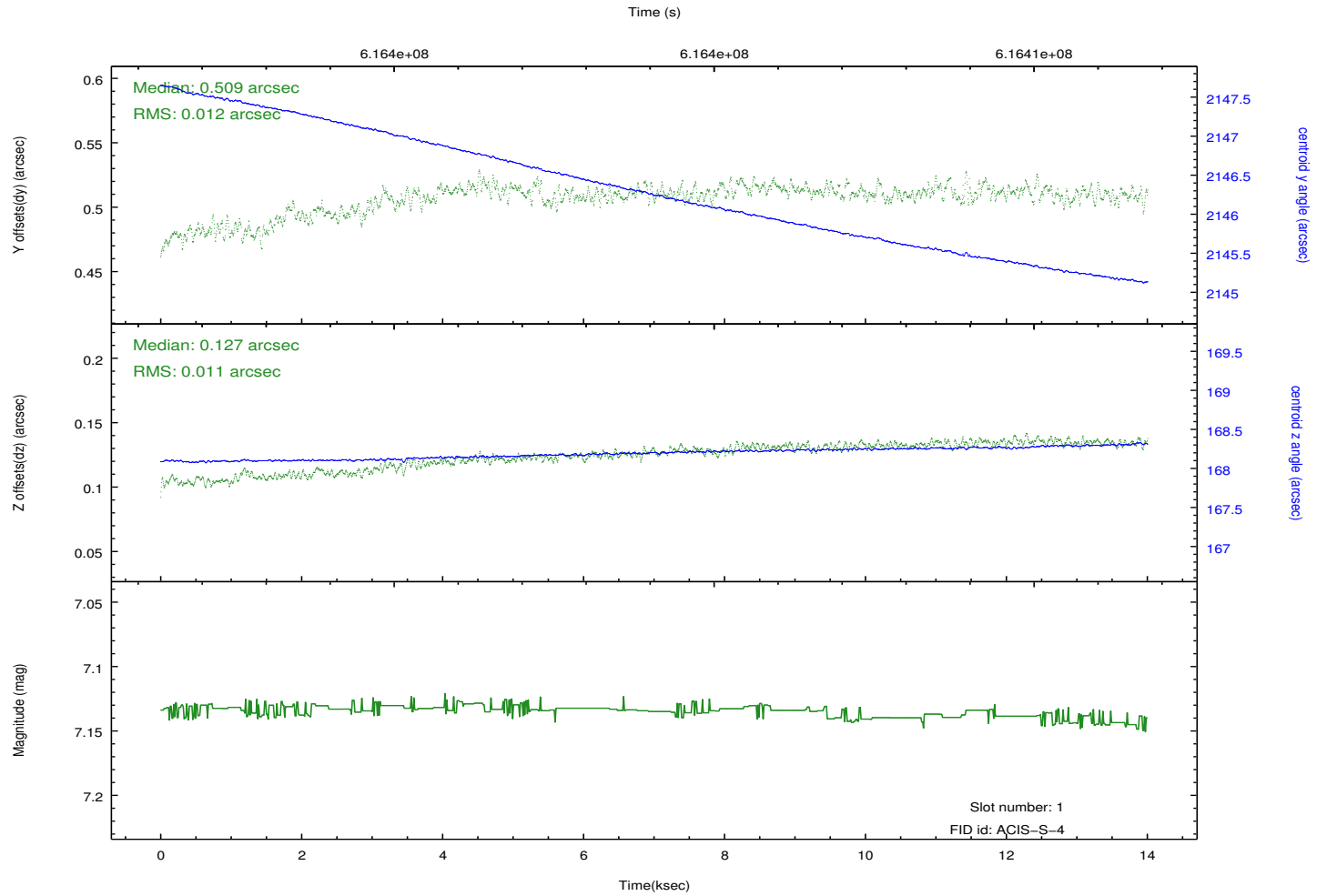
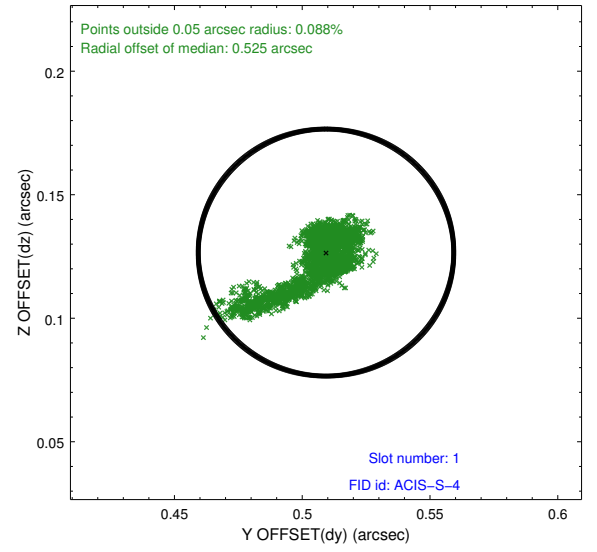
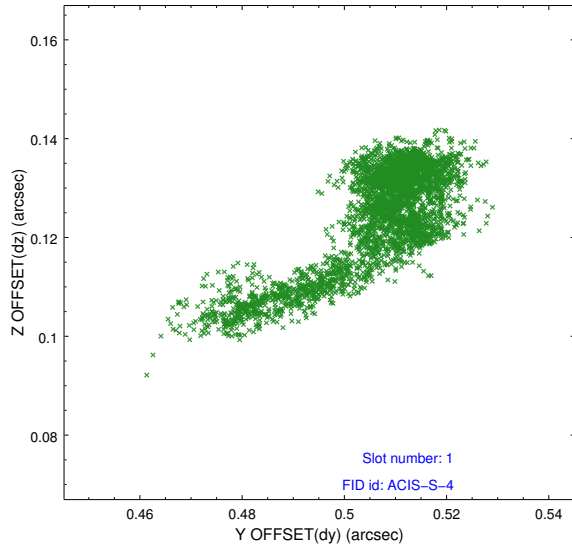


2.5 FID Slots

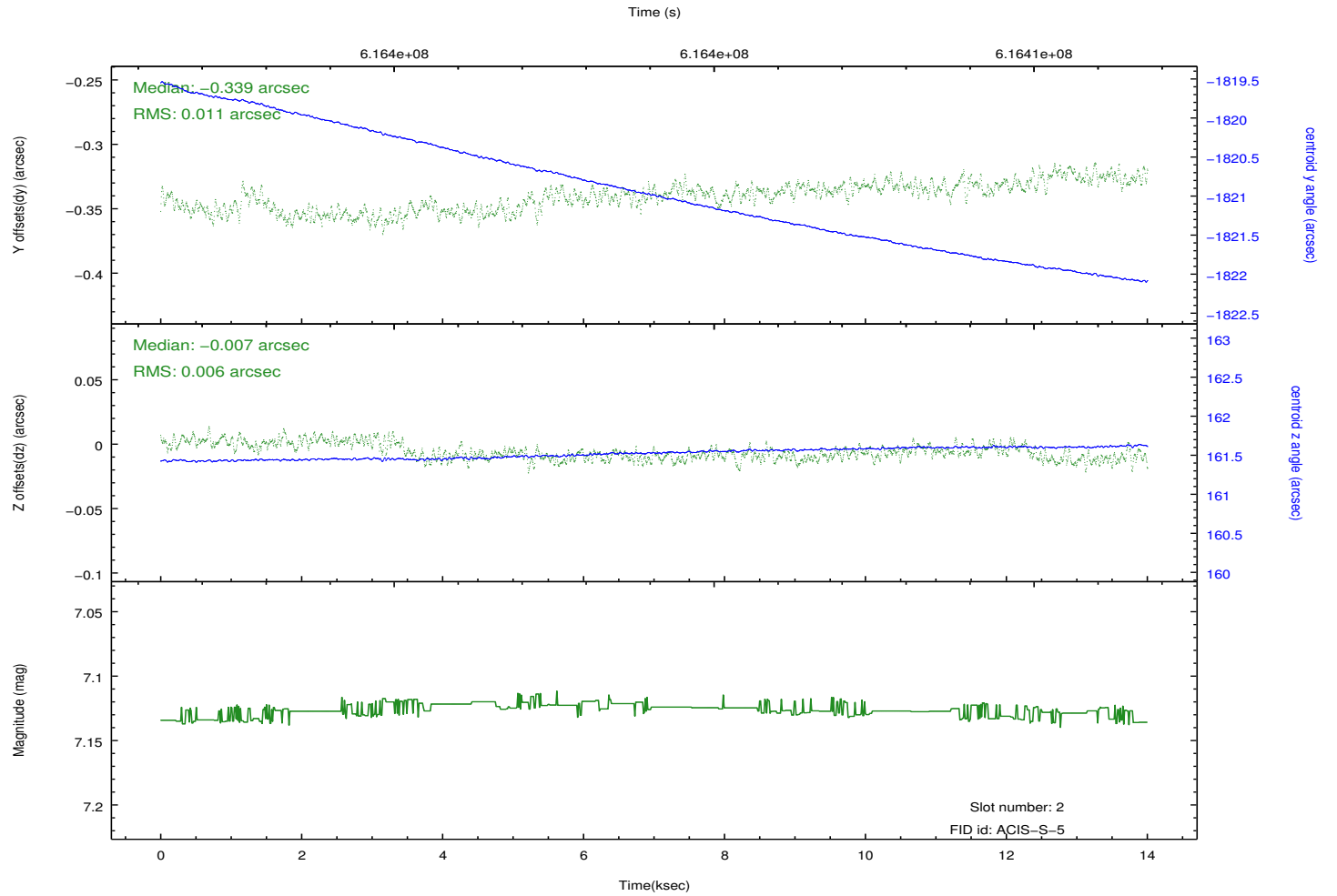
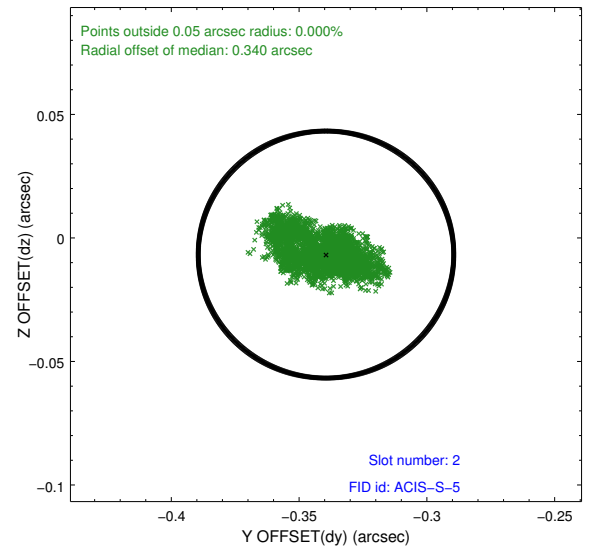
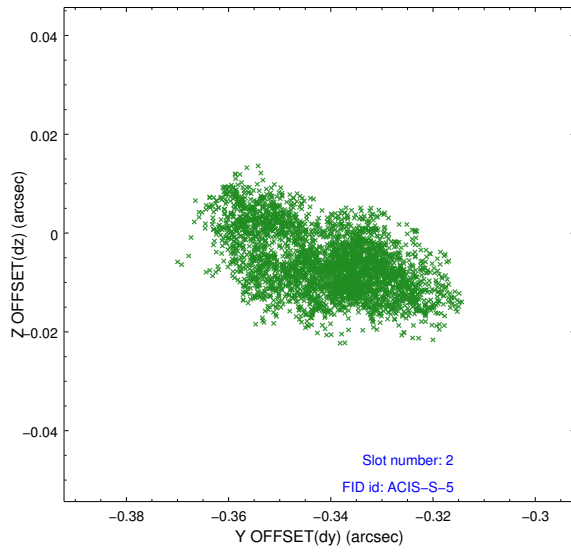
2.5.1 Slot 0



2.5.2 Slot 1



2.5.3 Slot 2



A Summary

A.1 Status

V&V Scientist	Beth Sundheim
V&V Date (YYYY-MM-DD)	2017.07.14
V&V Edition	1
V&V Disposition and Status	OK
V&V Charge Time	13.657025691867

A.2 Comments