

# V&V Reference Report

## L2 ASCDS Version : 10.5.4

Observation 20060 - L2 Version 1  
Chandra X-Ray Center

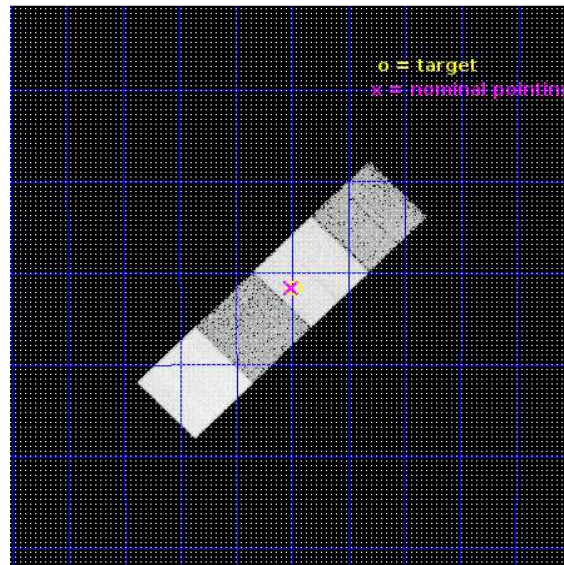
L2 Processing Date : Apr 22 2017

## Contents

<b>1</b>	<b>Front</b>	<b>2</b>
<b>2</b>	<b>OBI</b>	<b>3</b>
2.1	OBI . . . . .	3
2.1.1	Images . . . . .	3
2.1.2	Bias . . . . .	3
2.1.3	Parameters . . . . .	4
2.1.4	Events . . . . .	4
2.2	Compared Parameters . . . . .	5
2.3	Aspect . . . . .	6
2.4	Star Slots . . . . .	9
2.4.1	Slot 3 . . . . .	9
2.4.2	Slot 4 . . . . .	10
2.4.3	Slot 5 . . . . .	11
2.4.4	Slot 6 . . . . .	12
2.4.5	Slot 7 . . . . .	13
2.5	FID Slots . . . . .	14
2.5.1	Slot 0 . . . . .	14
2.5.2	Slot 1 . . . . .	15
2.5.3	Slot 2 . . . . .	16
<b>A</b>	<b>Summary</b>	<b>17</b>
A.1	Status . . . . .	17
A.2	Comments . . . . .	17

# 1 Front

seq_num	201089	Sequence number
obs_id	20060	Observation id
title	X-rays from Young Low-Mass Stars: Inhospitable Habitable Zones?	Pr
observer	Joel Kastner	Principal investigator
object	J1203-3821	Source name
dtcycle	0	&#160
cycle	P	events from which exps? Prim/Second/Both
ra_targ	180.995833	Observer's specified target RA [deg]
dec_targ	-38.361111	Observer's specified target Dec [deg]
ra_nom	181.00198655684	Nominal RA [deg]
dec_nom	-38.360411724221	Nominal Dec [deg]
roll_nom	315.16044398199	Nominal Roll [deg]
revision	1	Processing version of data
ontime	17790.313908458	Sum of GTIs [s]
livetime	17557.870360205	Livetime [s]
ontime5	17790.2729491	Sum of GTIs [s]
ontime6	17787.090828896	Sum of GTIs [s]
ontime7	17790.313908458	Sum of GTIs [s]
ontime8	17768.203287125	Sum of GTIs [s]
l2events	181992	Number of level 2 events

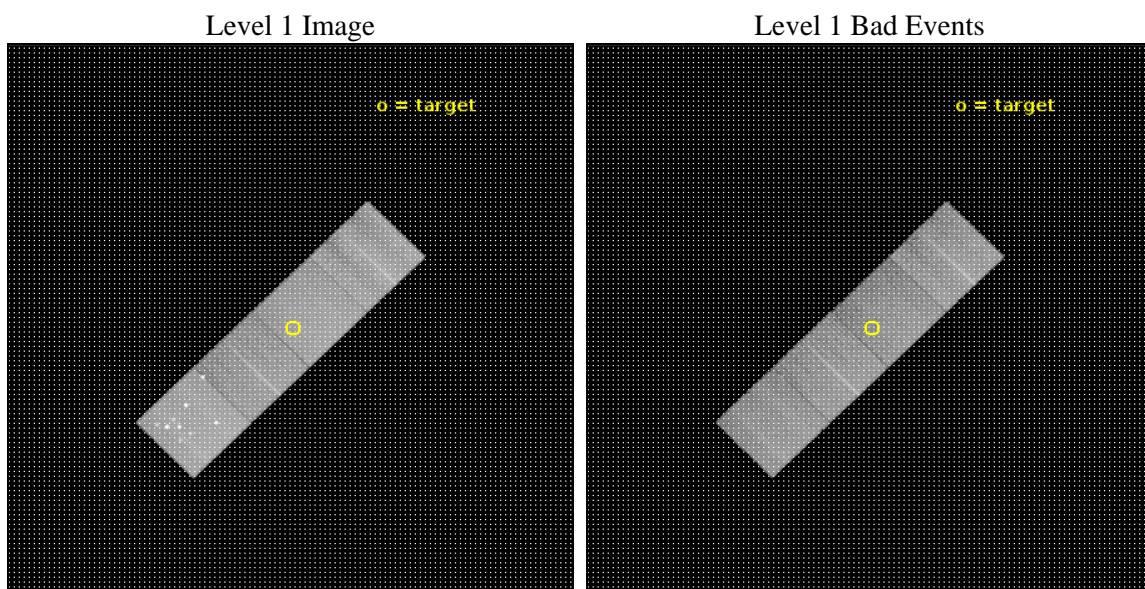




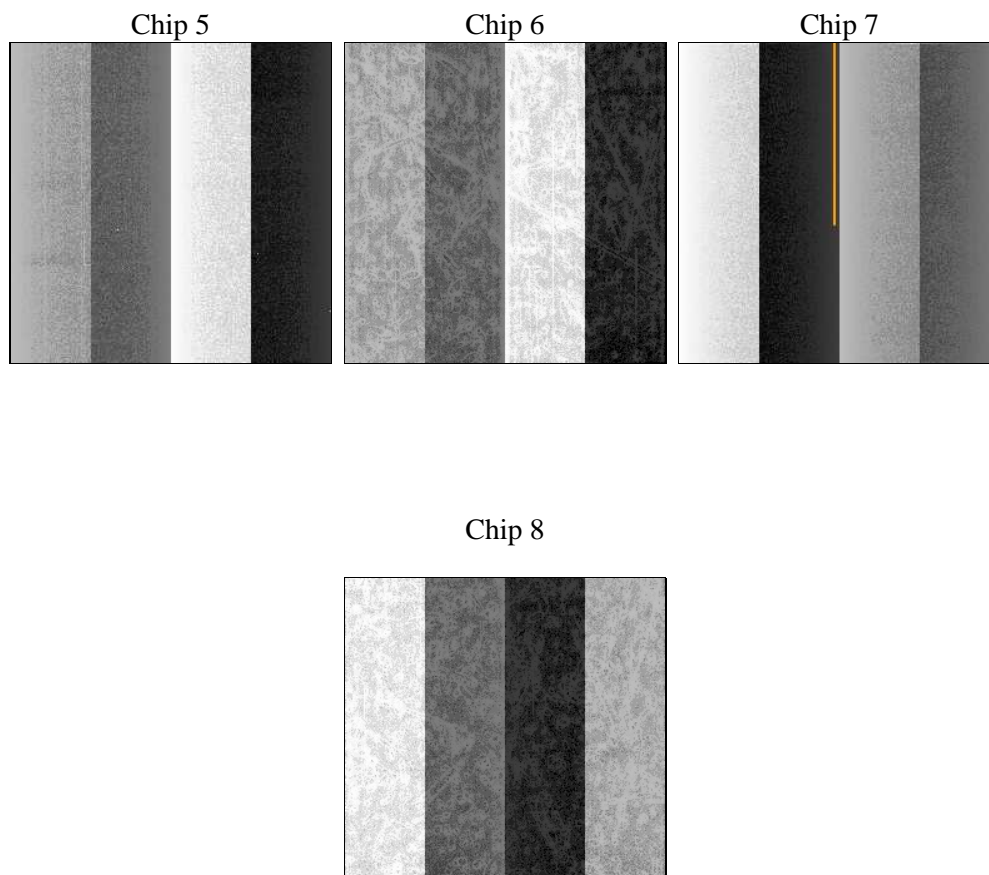
## 2 OBI

### 2.1 OBI

#### 2.1.1 Images



#### 2.1.2 Bias



### 2.1.3 Parameters

obi_num	0	Obi number	sched_exp_time	18000.000000	[s] Scheduled observation exposure time
ascdsver	10.5.4	Processing system revision	ontime	17790.313908458	Sum of GTIs [s]
caldsver	4.7.3	&#160	ontime5	17790.2729491	Sum of GTIs [s]
date	2017-04-22T05:04:41	Date and time of file creation	ontime6	17787.090828896	Sum of GTIs [s]
revision	1	Processing version of data	ontime7	17790.313908458	Sum of GTIs [s]
			ontime8	17768.203287125	Sum of GTIs [s]
			l1events	684896	Number of level 1 events

### 2.1.4 Events

	ccd 5	ccd 6	ccd 7	ccd 8
level 1 events	229938	129509	160379	165070
rejected events	103075	115556	92146	124143
rejected %	44%	89%	57%	75%

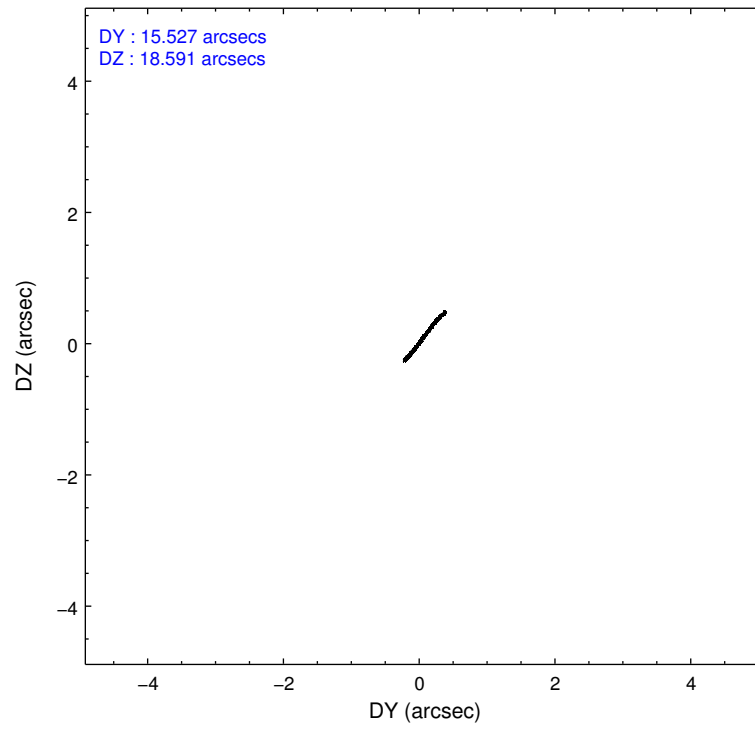
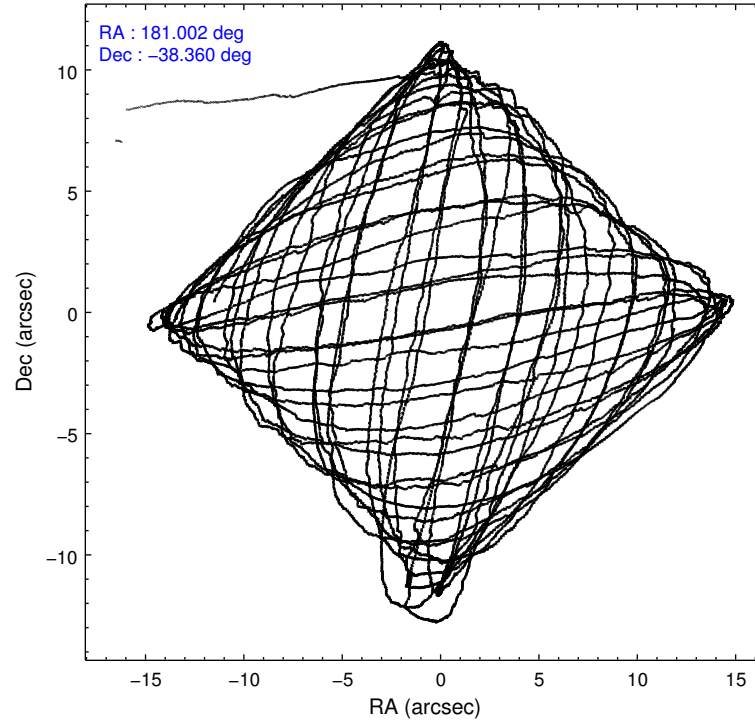
	ccd 5	ccd 6	ccd 7	ccd 8
grade 0 events	27355	4480	5418	11516
	11%	3%	3%	6%
grade 1 events	558	56	200	140
	0%	0%	0%	0%
grade 2 events	35048	3441	14567	10004
	15%	2%	9%	6%
grade 3 events	4792	1280	5057	4272
	2%	0%	3%	2%
grade 4 events	6292	1254	4972	3896
	2%	0%	3%	2%
grade 5 events	12962	5368	15224	8432
	5%	4%	9%	5%
grade 6 events	53404	3499	38228	11240
	23%	2%	23%	6%
grade 7 events	89527	110131	76713	115570
	38%	85%	47%	70%

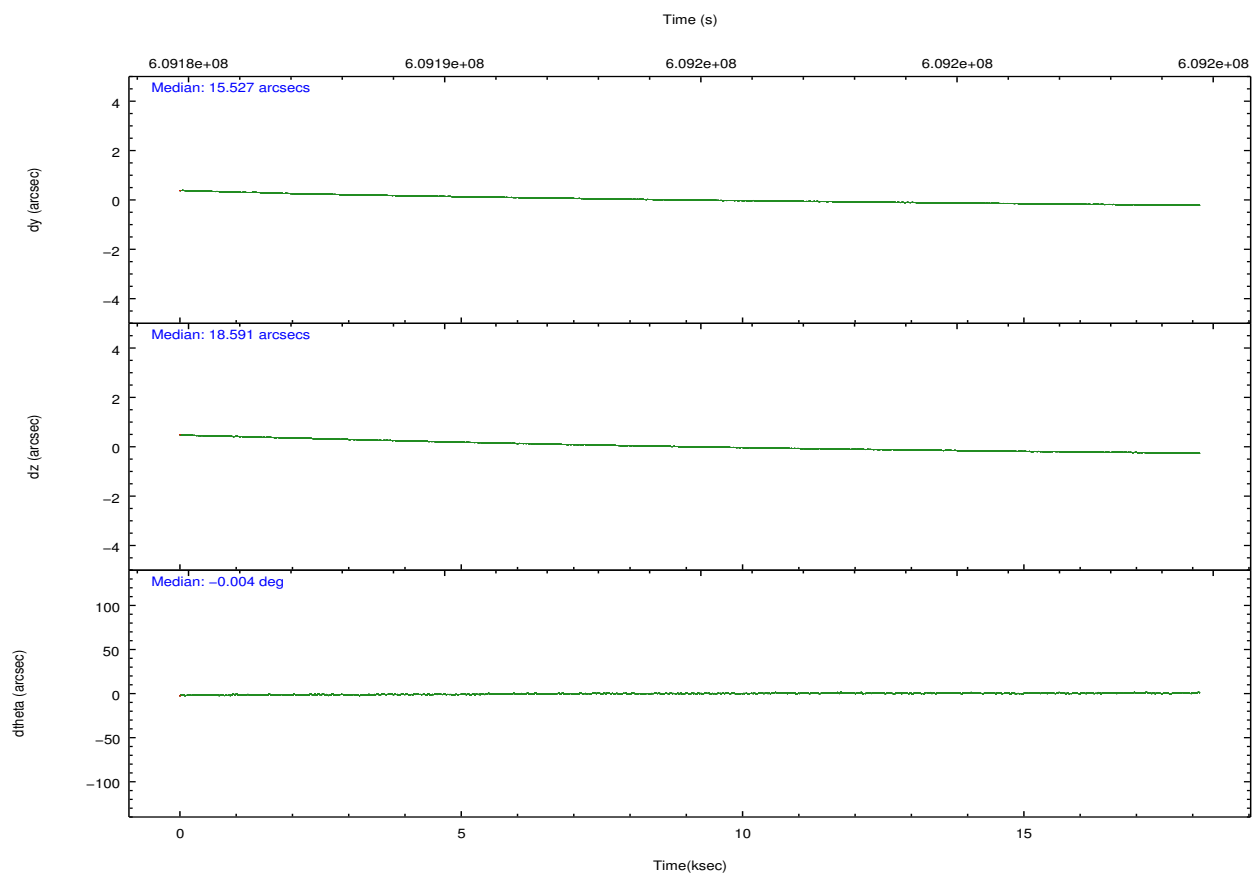
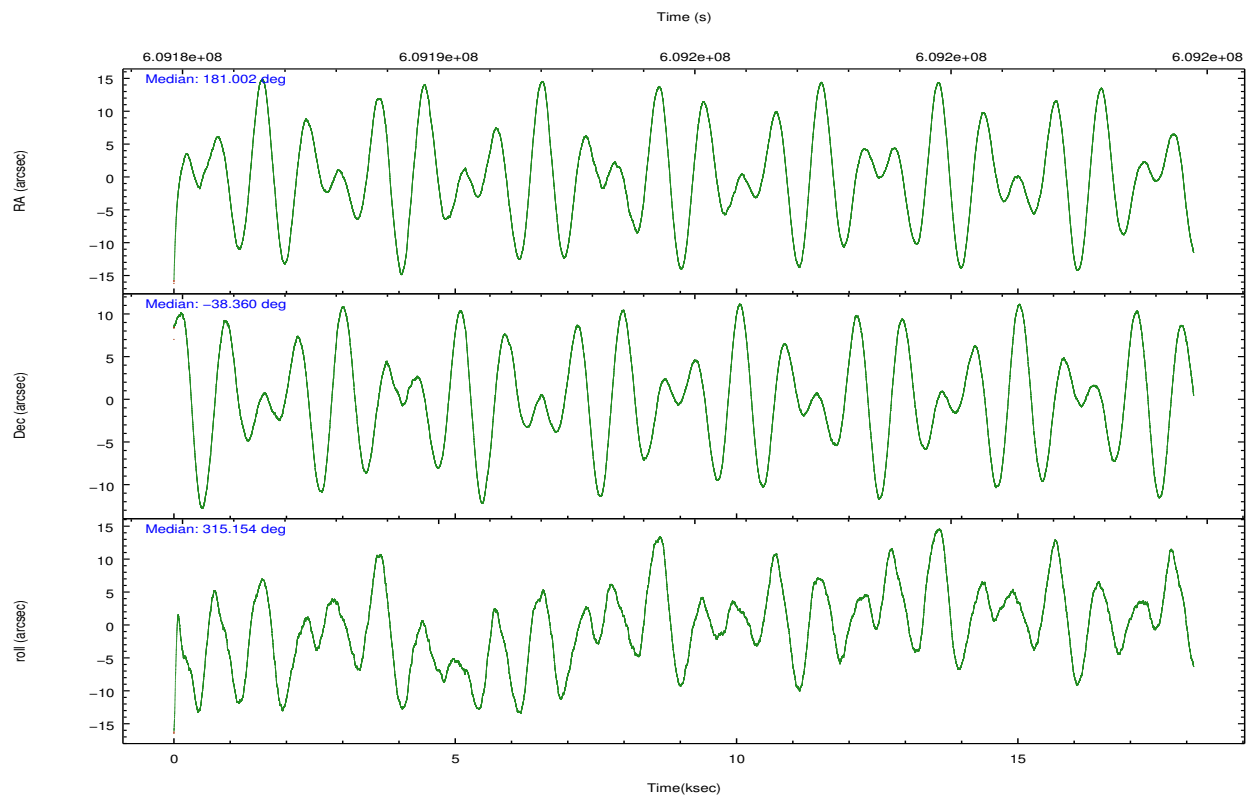
## 2.2 Compared Parameters

Parameter	Planned	Actual
Instrument	ACIS	ACIS
Detector	ACIS-5678	ACIS-5678
Grating	NONE	NONE
Data mode	VFAINT	VFAINT
Observation mode	POINTING	POINTING
[deg] Pointing RA	180.968034	181.0019865568385
[deg] Pointing Dec	-38.353769	-38.36041172422078
[deg] Pointing Roll	314.982754	315.160443981993
[mm] SIM focus pos	-0.684267	-0.6828225247311905
[mm] SIM defocus	0	0.001444936568705701
[mm] SIM translation stage pos	-190.132523	-190.1400660498719
[mm] SIM translation stage offset	0	0.00754346686406393
[s] Observation start time (MET)	609185844.184000	609184589.5806299
Observation start date	2017-04-21T18:16:15	2017-04-21T17:56:29
[s] Observation end time (MET)	609203844.184000	609204934.29432
Observation end date	2017-04-21T23:16:15	2017-04-21T23:35:34
Read mode	TIMED	TIMED

Parameter	Planned	Actual
Obspar format version number	7	7
Obspar file type	PREDICTED	ACTUAL
Obspar update status	NONE	UPDATED
CCD I0 on	N	N
CCD I1 on	N	N
CCD I2 on	O1	N
CCD I3 on	O2	N
CCD S0 on	N	N
CCD S1 on	Y	Y
CCD S2 on	Y	Y
CCD S3 on	Y	Y
CCD S4 on	Y	Y
CCD S5 on	N	N
Number of optional ACIS chips dropped	2	2
On-chip summing requested	N	N
Subarray requested	NONE	NONE
Alternating exposures requested	N	N
[s] Primary exposure time	0.000000	3.1

## 2.3 Aspect



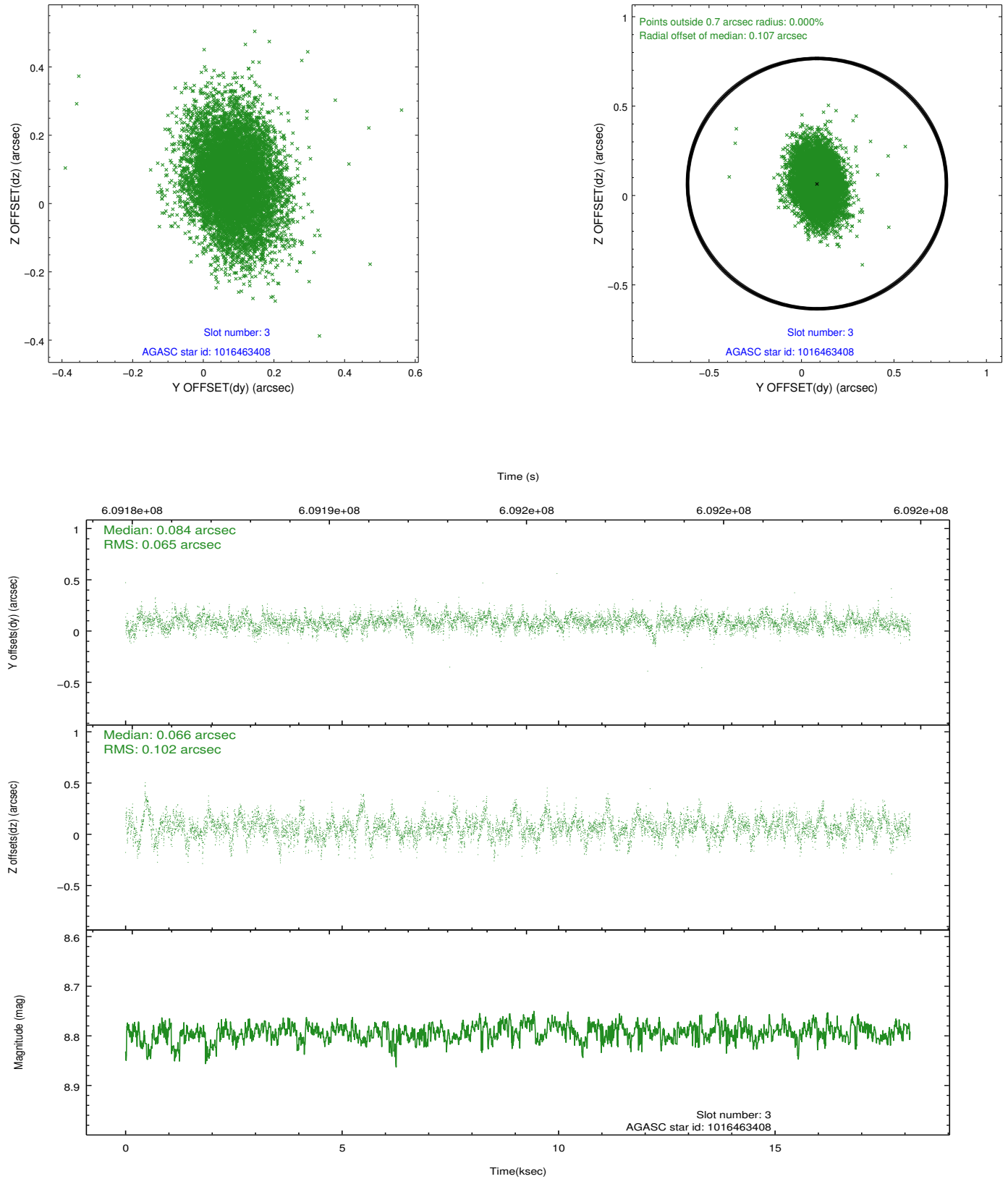


### Slot Statistics

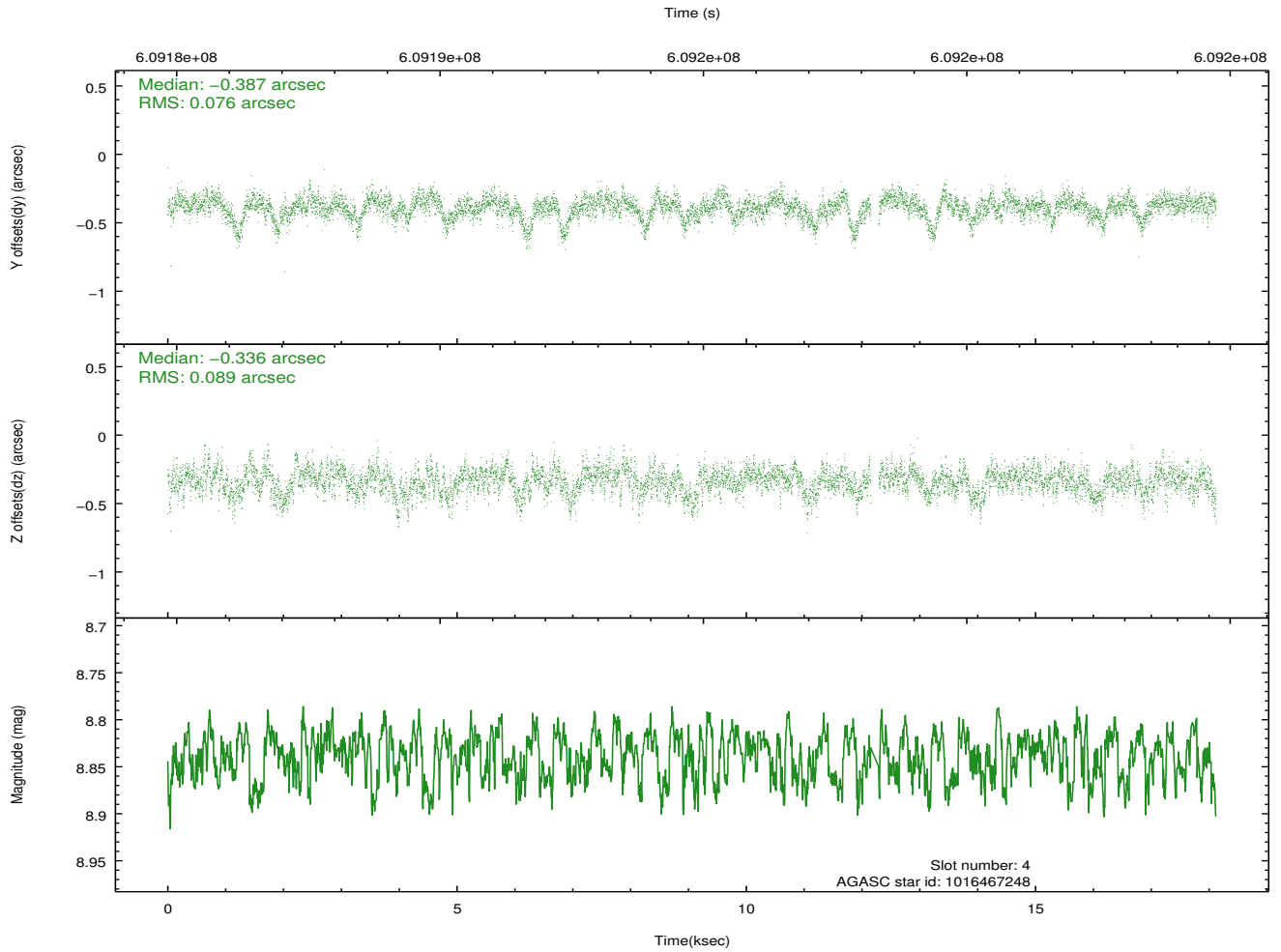
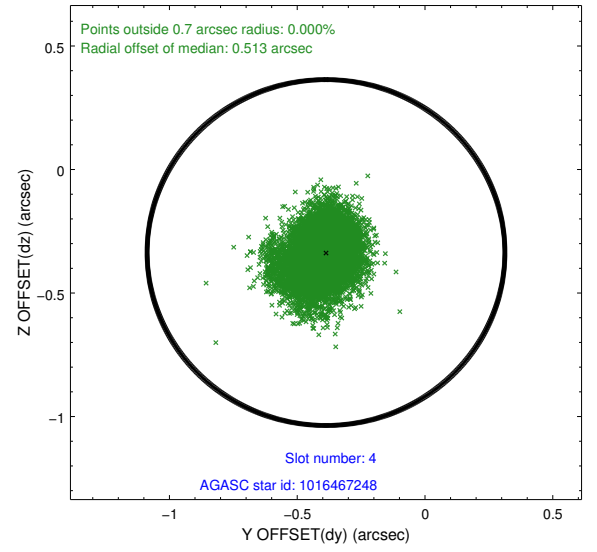
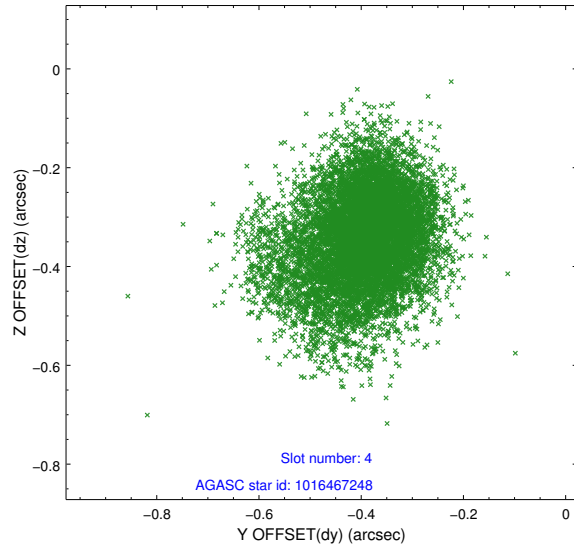
slot	status	used	id	mag	n_pts	med_dy	med_dz	dr1	dr2	ra	dec	mean_y	mean_z
0	FID		ACIS-S-2	7.10	4421	-0.214	-0.147	0.012	0.024	0.000000	0.000000	-768.74	-1740.26
1	FID		ACIS-S-4	7.22	4421	0.512	0.142	0.006	0.012	0.000000	0.000000	2145.15	168.30
2	FID		ACIS-S-5	7.20	4421	-0.328	0.014	0.012	0.025	0.000000	0.000000	-1821.42	162.07
3	GUIDE	used	1016463408	8.79	8833	0.084	0.066	0.125	0.219	180.778996	-38.620343	303.78	-1054.75
4	GUIDE	used	1016467248	8.84	8766	-0.387	-0.336	0.122	0.213	181.137094	-38.305070	213.98	461.12
5	GUIDE	used	1016473464	8.97	8836	0.248	0.226	0.142	0.220	180.236011	-38.483644	-1120.74	-1795.17
6	GUIDE	used	1016469744	9.27	8834	-0.280	-0.343	0.144	0.230	181.727916	-38.106438	897.48	2143.77
7	GUIDE	used	1016470608	9.18	8833	0.336	0.387	0.129	0.210	180.276540	-38.003011	-2274.13	-499.86

## 2.4 Star Slots

### 2.4.1 Slot 3

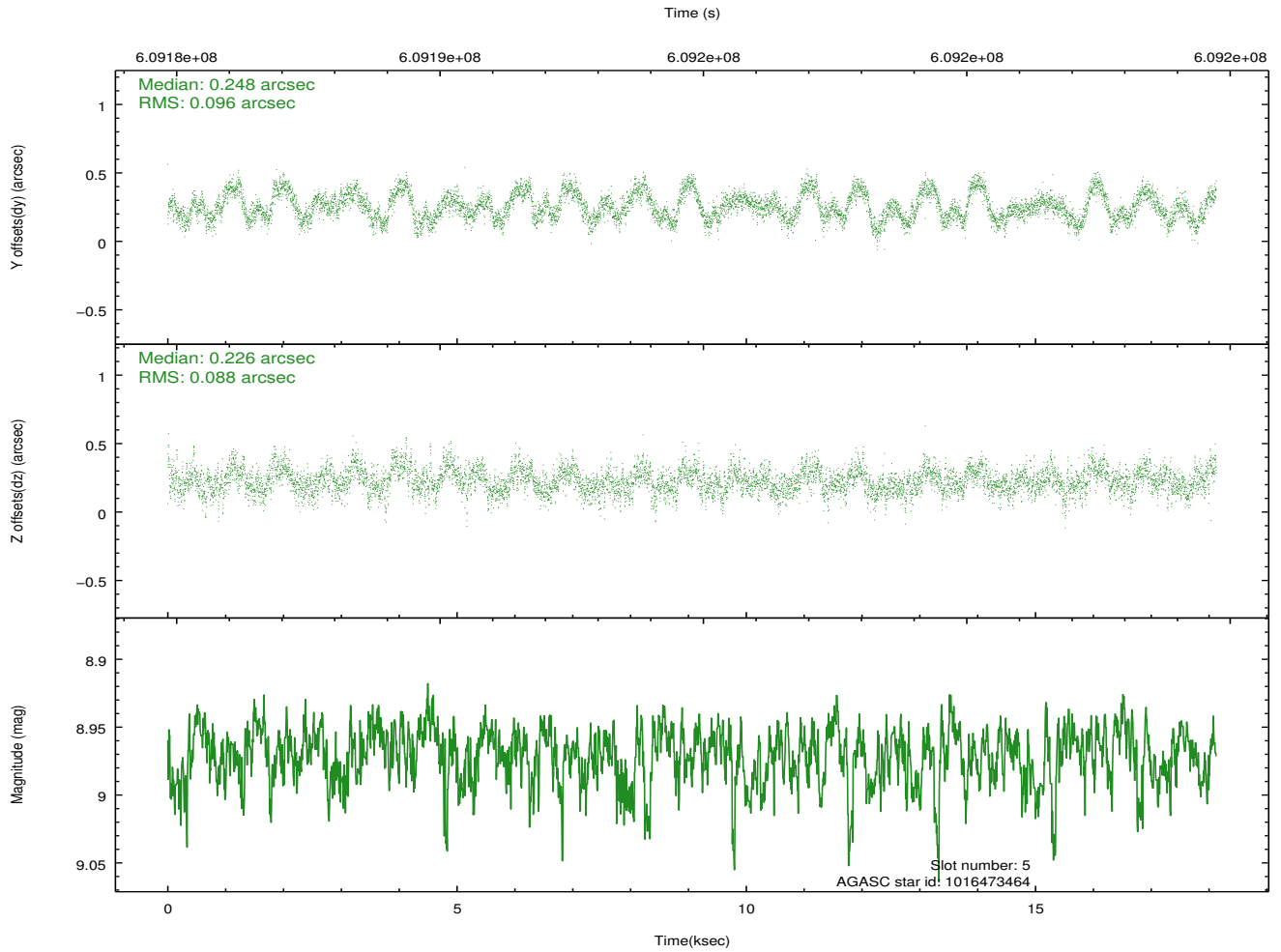
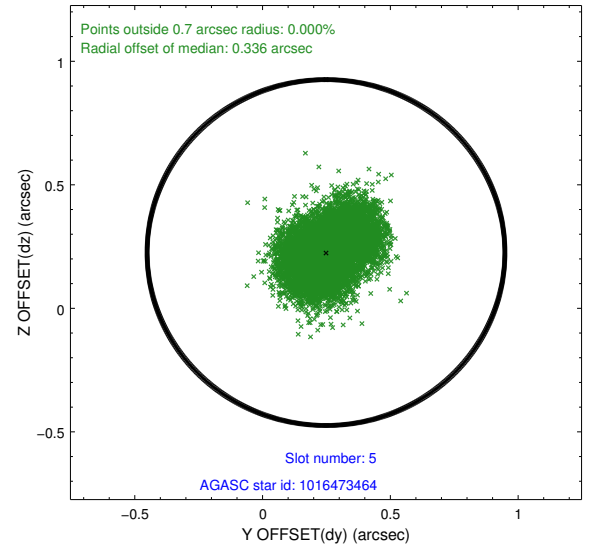
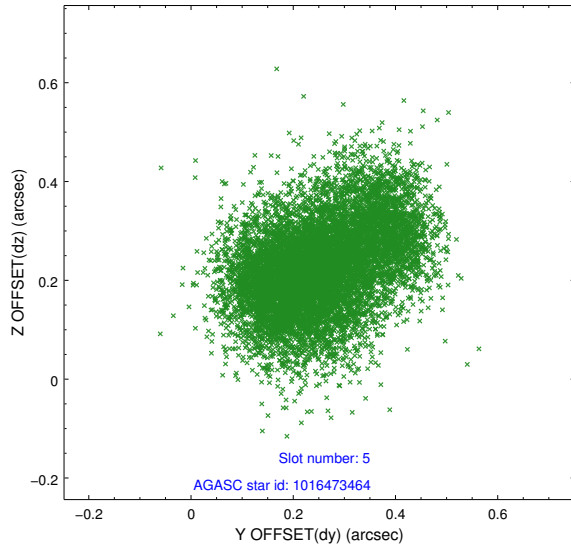


## 2.4.2 Slot 4

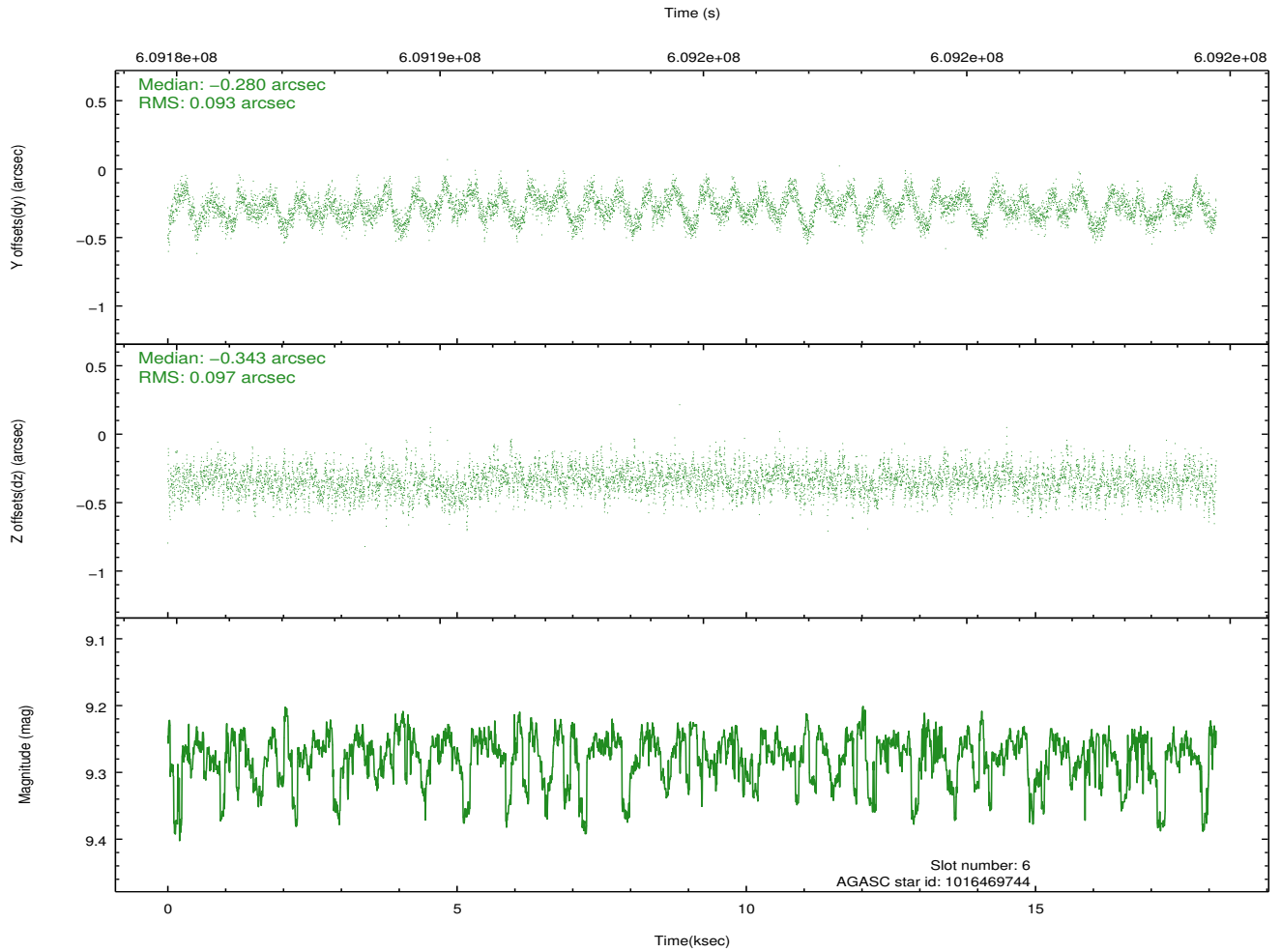
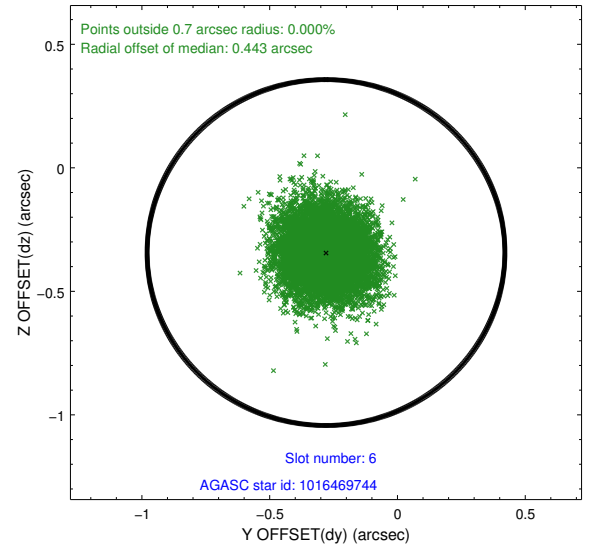
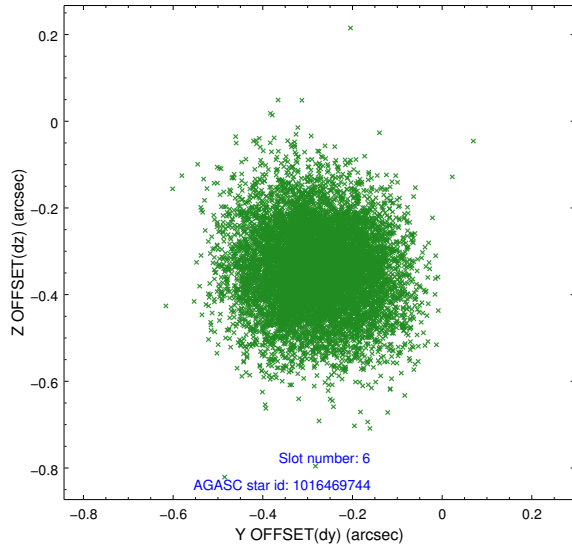




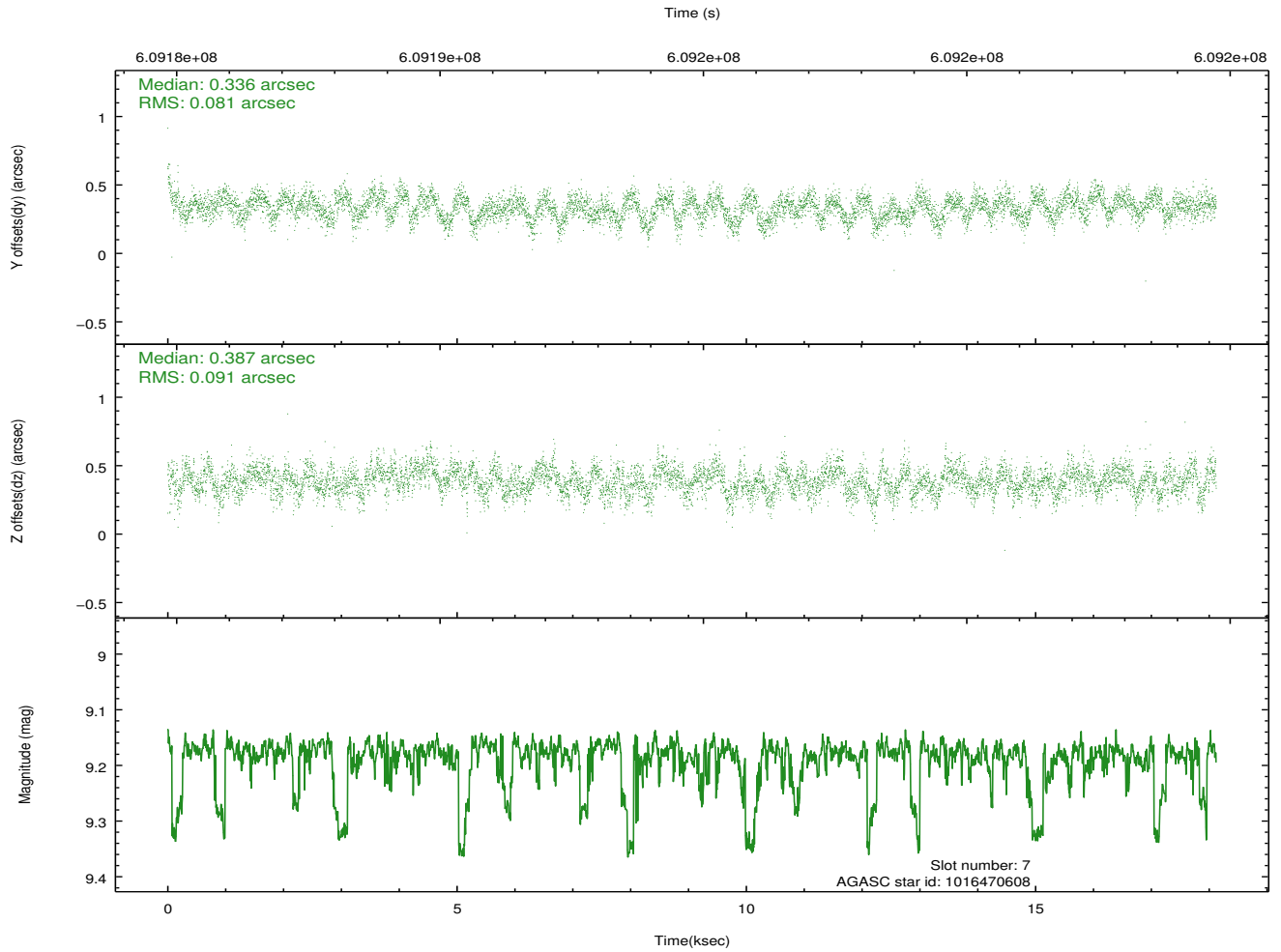
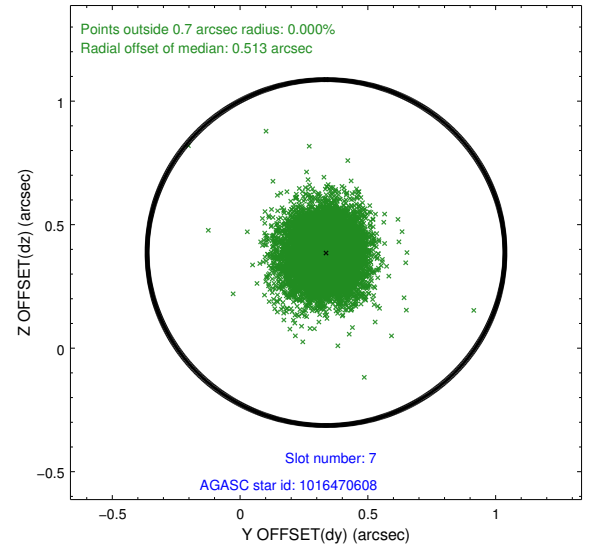
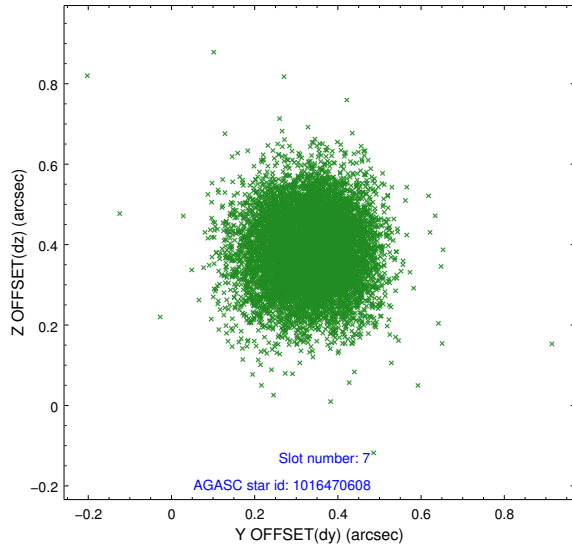
### 2.4.3 Slot 5



## 2.4.4 Slot 6

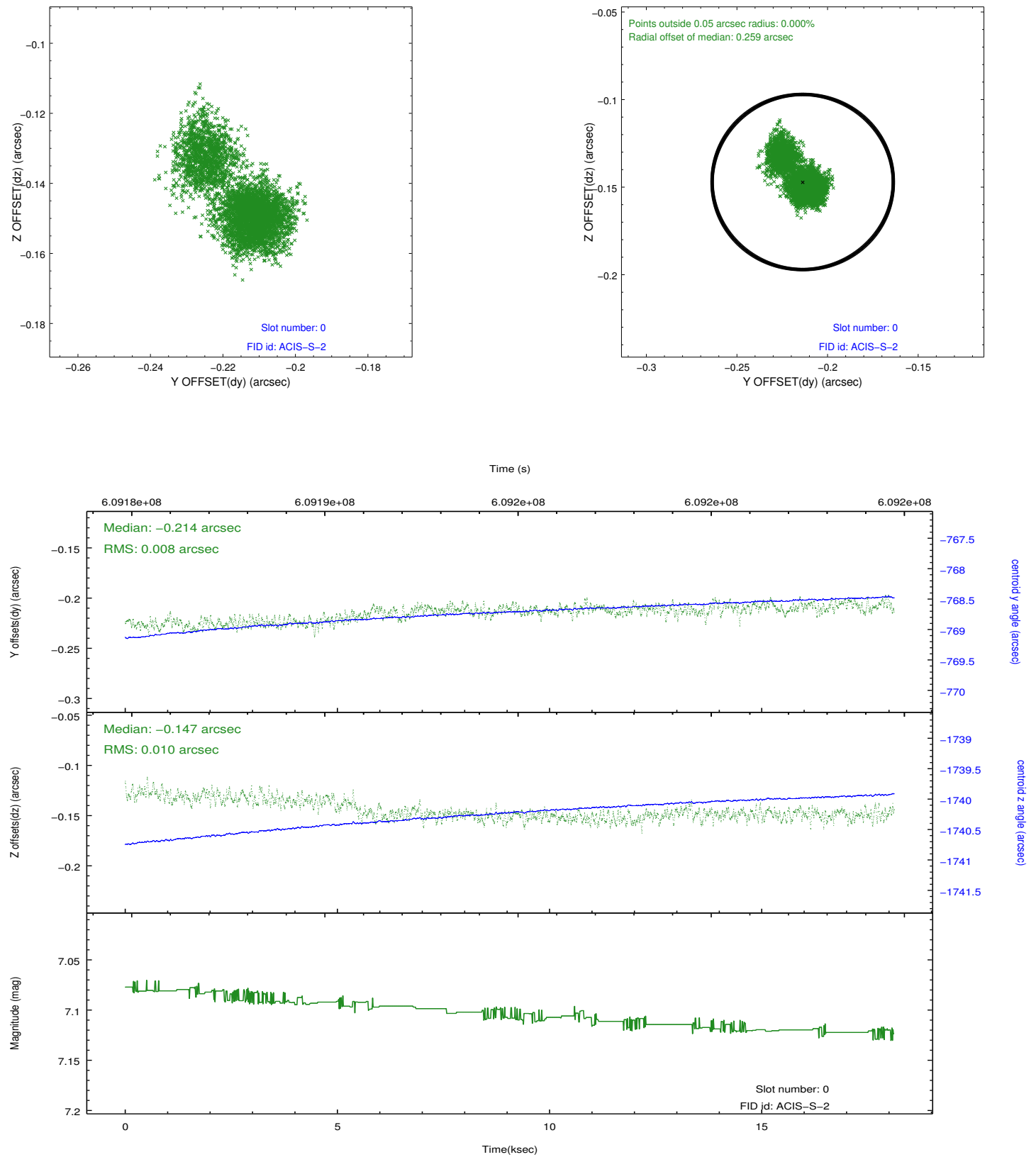


## 2.4.5 Slot 7

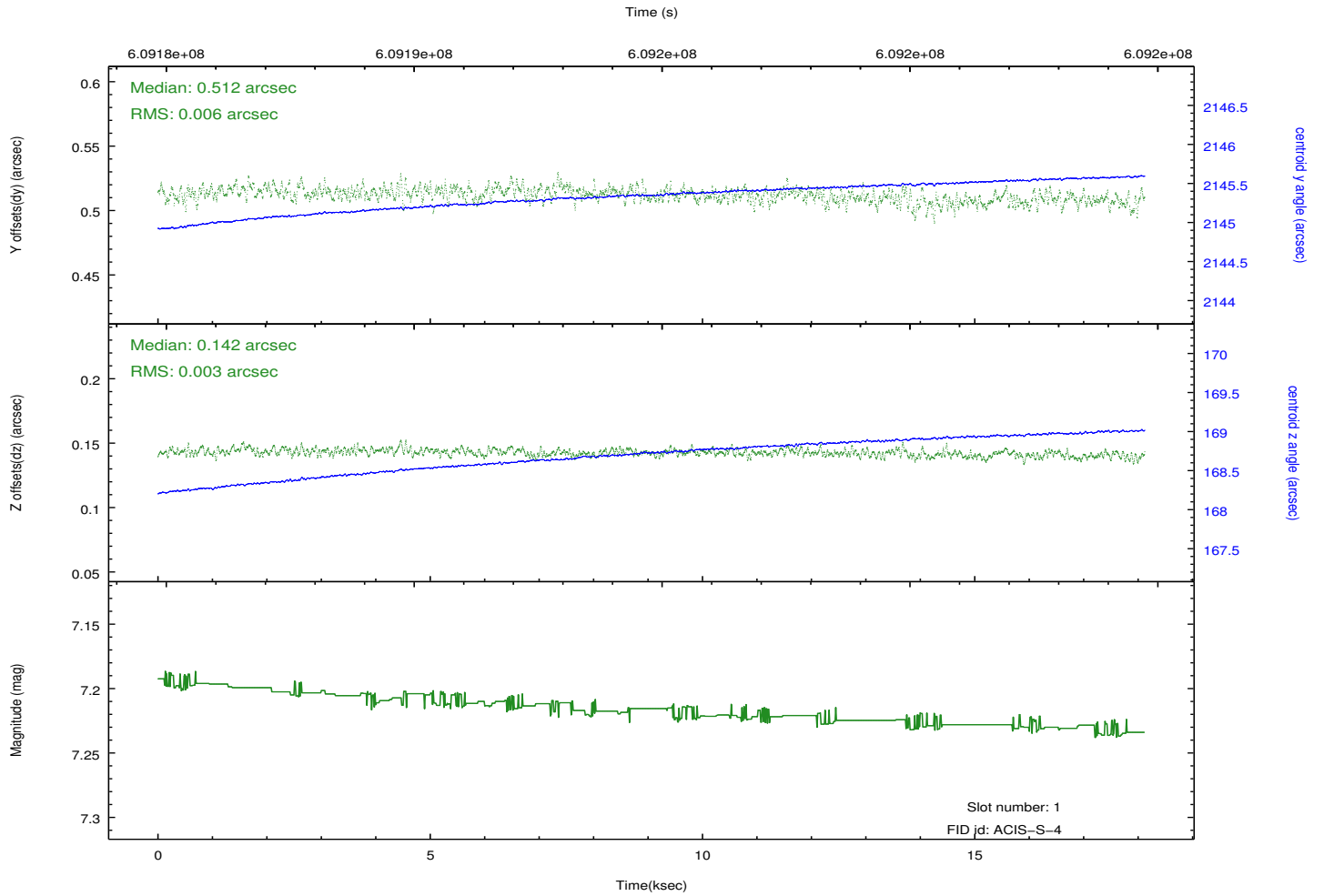
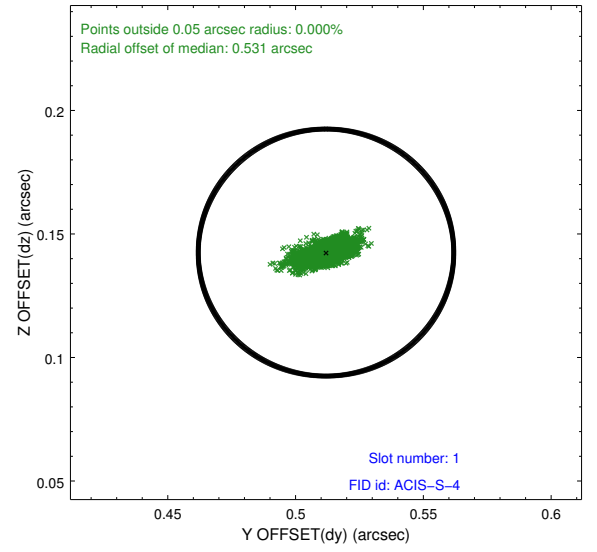
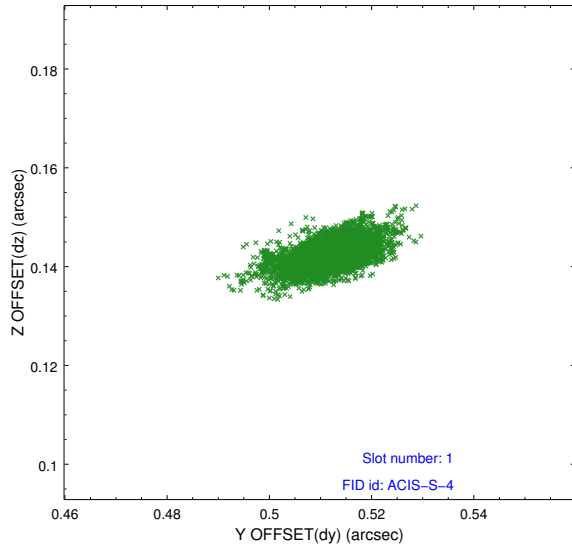


## 2.5 FID Slots

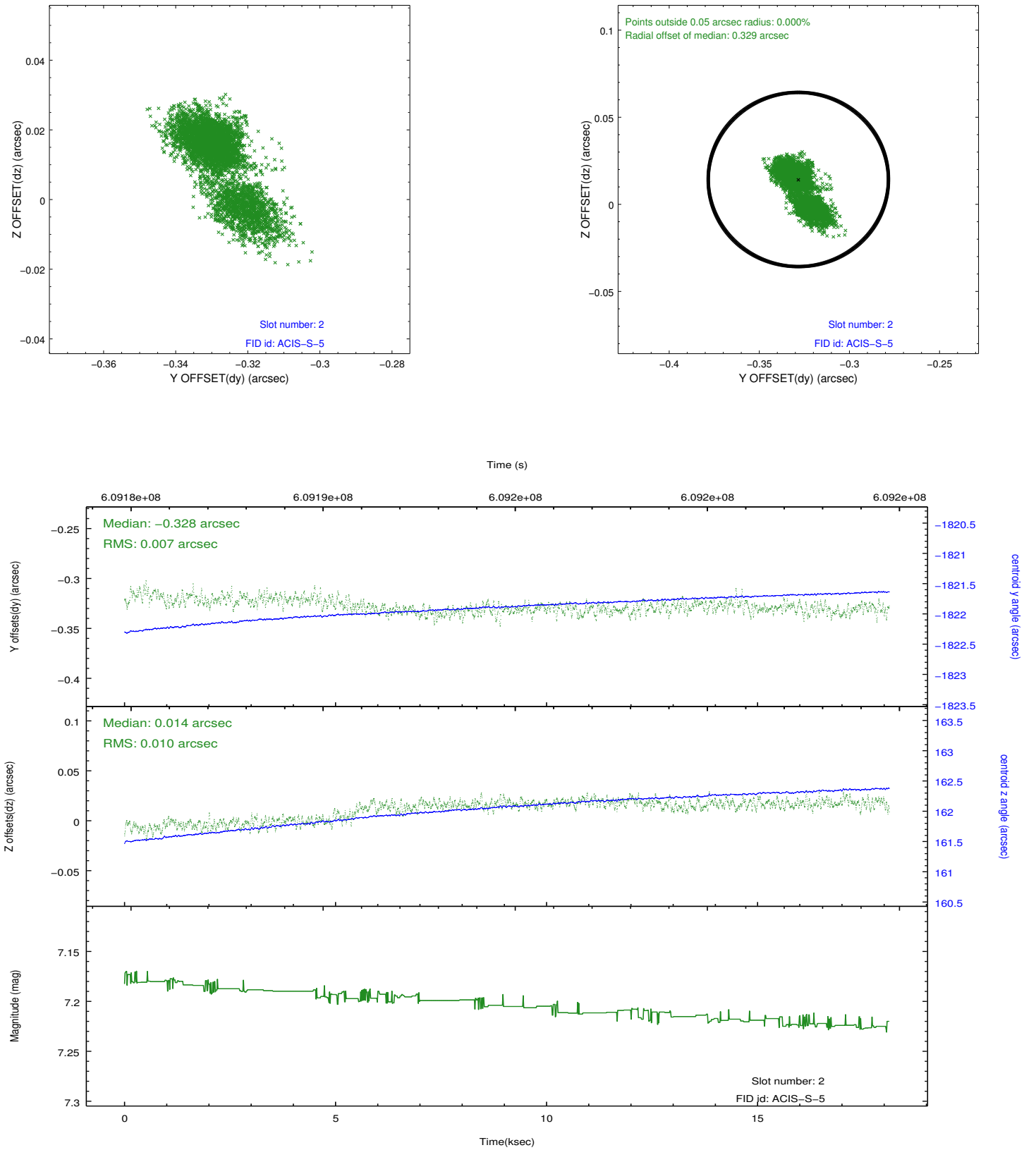
### 2.5.1 Slot 0



## 2.5.2 Slot 1



### 2.5.3 Slot 2



## A Summary

### A.1 Status

V&V Scientist	Joy Nichols
V&V Date (YYYY-MM-DD)	2017.04.24
V&V Edition	1
V&V Disposition and Status	OK
V&V Charge Time	17.790313908458

### A.2 Comments