

V&V Reference Report

L2 ASCDS Version : 10.5.4

Observation 20056 - L2 Version 1
Chandra X-Ray Center

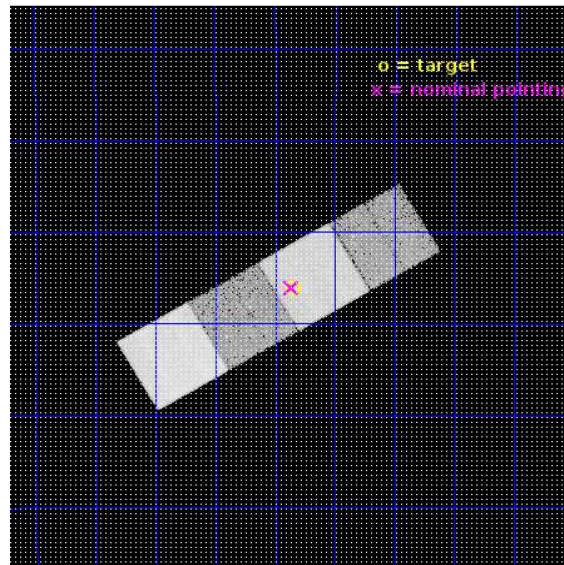
L2 Processing Date : Apr 14 2017

Contents

1	Front	2
2	OBI	3
2.1	OBI	3
2.1.1	Images	3
2.1.2	Bias	3
2.1.3	Parameters	4
2.1.4	Events	4
2.2	Compared Parameters	5
2.3	Aspect	6
2.4	Star Slots	9
2.4.1	Slot 3	9
2.4.2	Slot 4	10
2.4.3	Slot 5	11
2.4.4	Slot 6	12
2.4.5	Slot 7	13
2.5	FID Slots	14
2.5.1	Slot 0	14
2.5.2	Slot 1	15
2.5.3	Slot 2	16
A	Summary	17
A.1	Status	17
A.2	Comments	17

1 Front

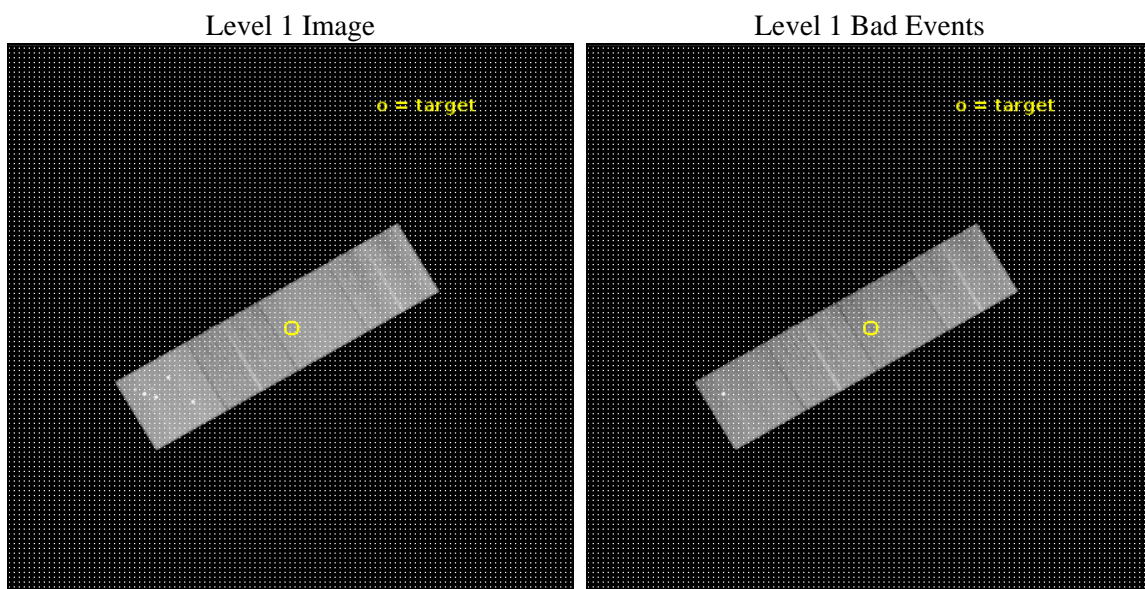
seq_num	201091	Sequence number
obs_id	20056	Observation id
title	X-rays from Young Low-Mass Stars: Inhospitable Habitable Zones?	Pr
observer	Joel Kastner	Principal investigator
object	TWA 32	Source name
dtcycle	0	
cycle	P	events from which exps? Prim/Second/Both
ra_targ	186.7125	Observer's specified target RA [deg]
dec_targ	-33.27	Observer's specified target Dec [deg]
ra_nom	186.71615694393	Nominal RA [deg]
dec_nom	-33.268052799196	Nominal Dec [deg]
roll_nom	329.65864354491	Nominal Roll [deg]
revision	1	Processing version of data
ontime	24561.300189018	Sum of GTIs [s]
livetime	24240.388720283	Livetime [s]
ontime5	24561.300189018	Sum of GTIs [s]
ontime6	24561.300189018	Sum of GTIs [s]
ontime7	24561.300189018	Sum of GTIs [s]
ontime8	24561.300189018	Sum of GTIs [s]
l2events	254874	Number of level 2 events



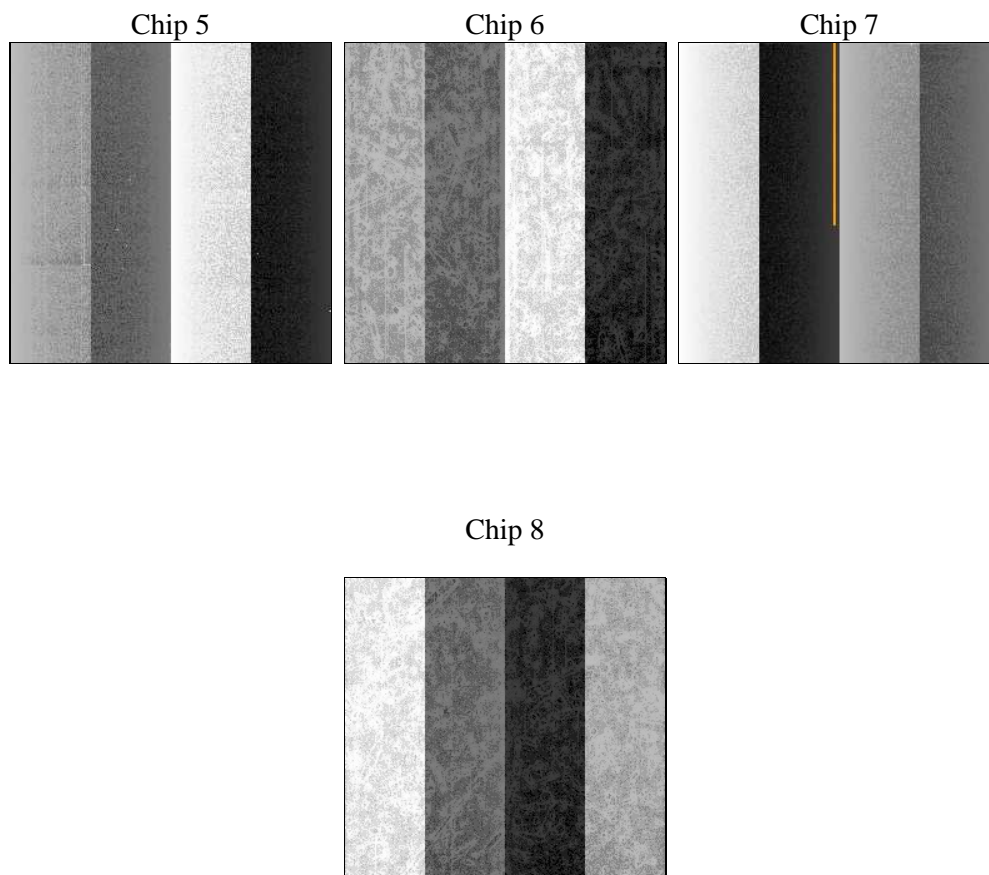
2 OBI

2.1 OBI

2.1.1 Images



2.1.2 Bias



2.1.3 Parameters

obi_num	0	Obi number	sched_exp_time	24500.000000	[s] Scheduled observation exposure time
ascdsver	10.5.4	Processing system revision	ontime	24561.300189018	Sum of GTIs [s]
caldsver	4.7.3	 	ontime5	24561.300189018	Sum of GTIs [s]
date	2017-04-15T00:04:28	Date and time of file creation	ontime6	24561.300189018	Sum of GTIs [s]
revision	1	Processing version of data	ontime7	24561.300189018	Sum of GTIs [s]
			ontime8	24561.300189018	Sum of GTIs [s]
			l1events	946435	Number of level 1 events

2.1.4 Events

	ccd 5	ccd 6	ccd 7	ccd 8
level 1 events	308902	185139	224267	228127
rejected events	153262	165007	128416	170753
rejected %	49%	89%	57%	74%

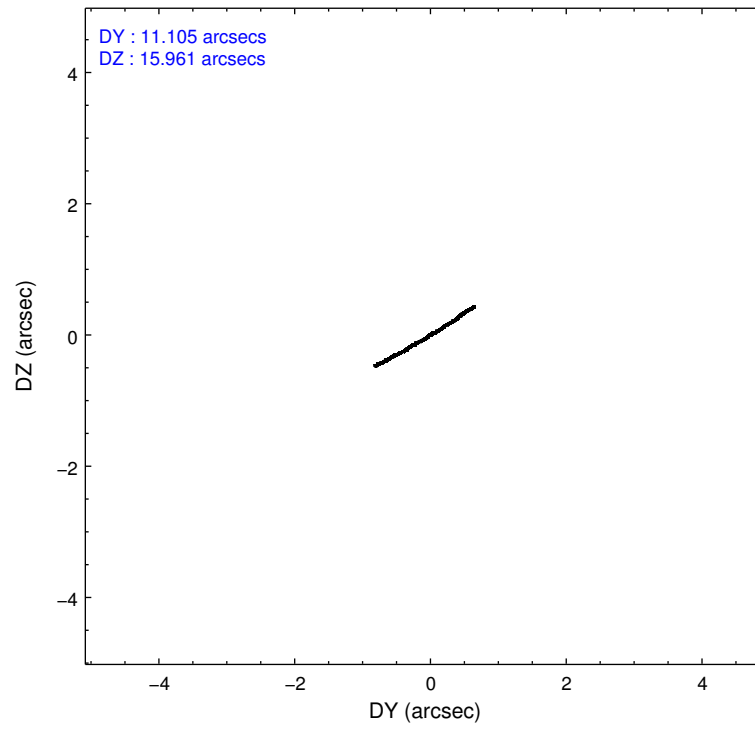
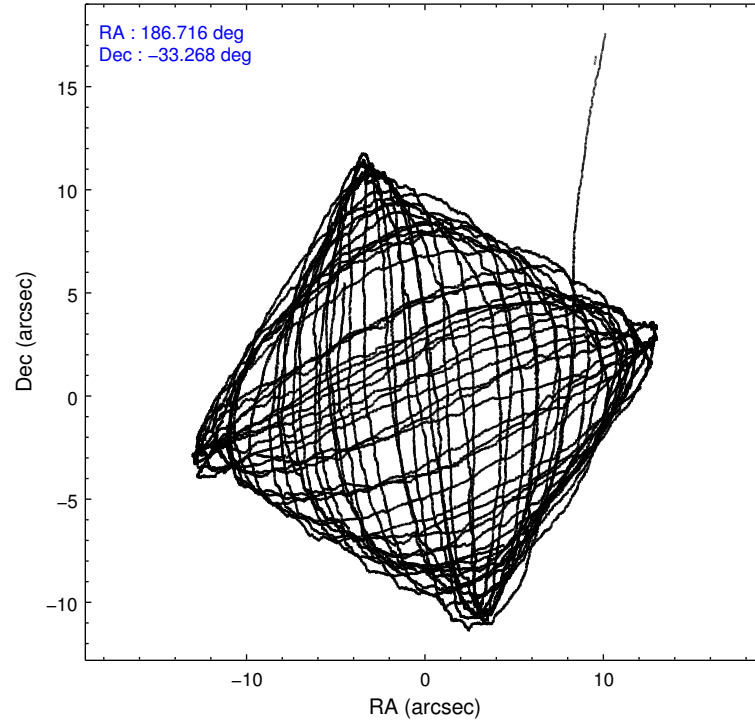
	ccd 5	ccd 6	ccd 7	ccd 8
grade 0 events	31061	6535	7584	15987
	10%	3%	3%	7%
grade 1 events	691	106	279	142
	0%	0%	0%	0%
grade 2 events	41984	4921	20739	14321
	13%	2%	9%	6%
grade 3 events	3962	1789	7156	5686
	1%	0%	3%	2%
grade 4 events	3644	1923	6899	5307
	1%	1%	3%	2%
grade 5 events	18173	7717	21342	12076
	5%	4%	9%	5%
grade 6 events	75009	4965	53482	16092
	24%	2%	23%	7%
grade 7 events	134378	157183	106786	158516
	43%	84%	47%	69%

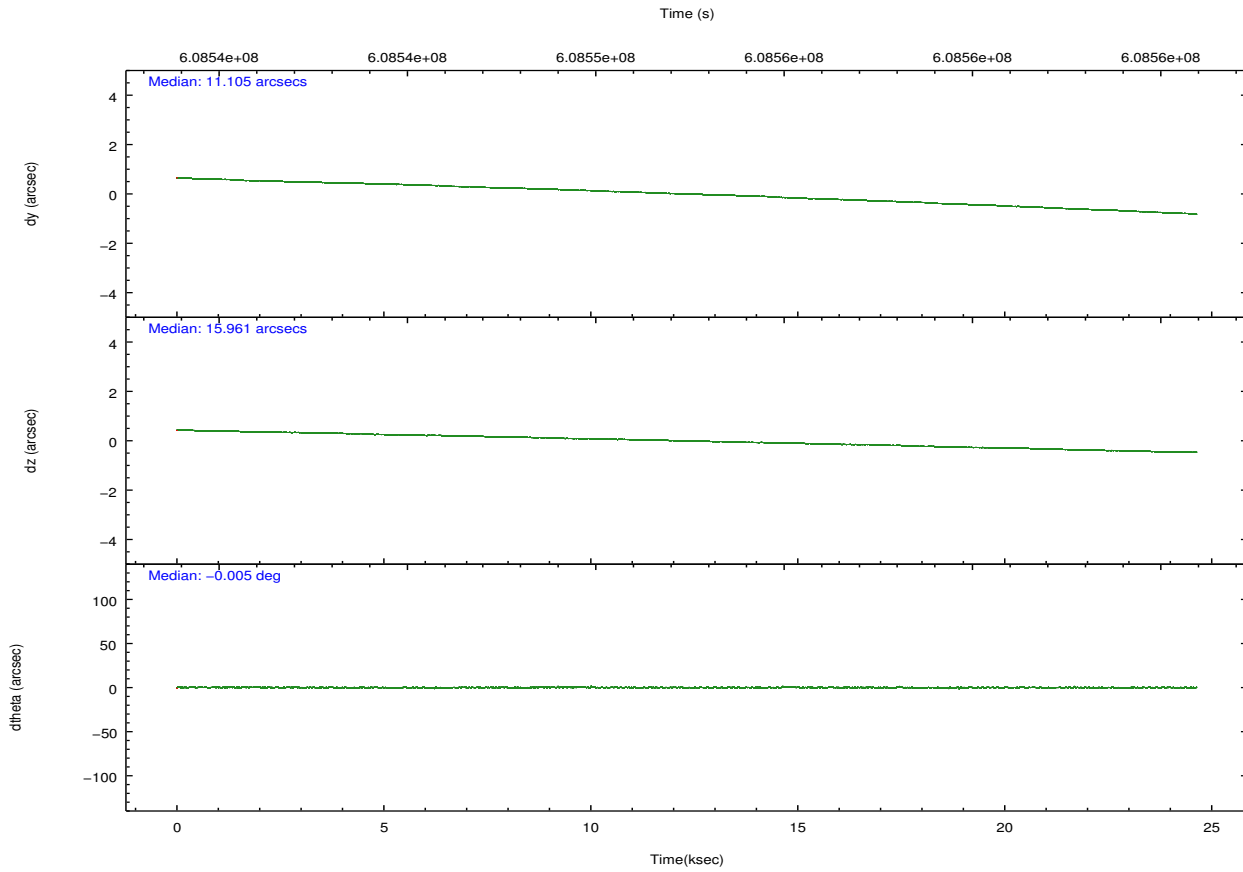
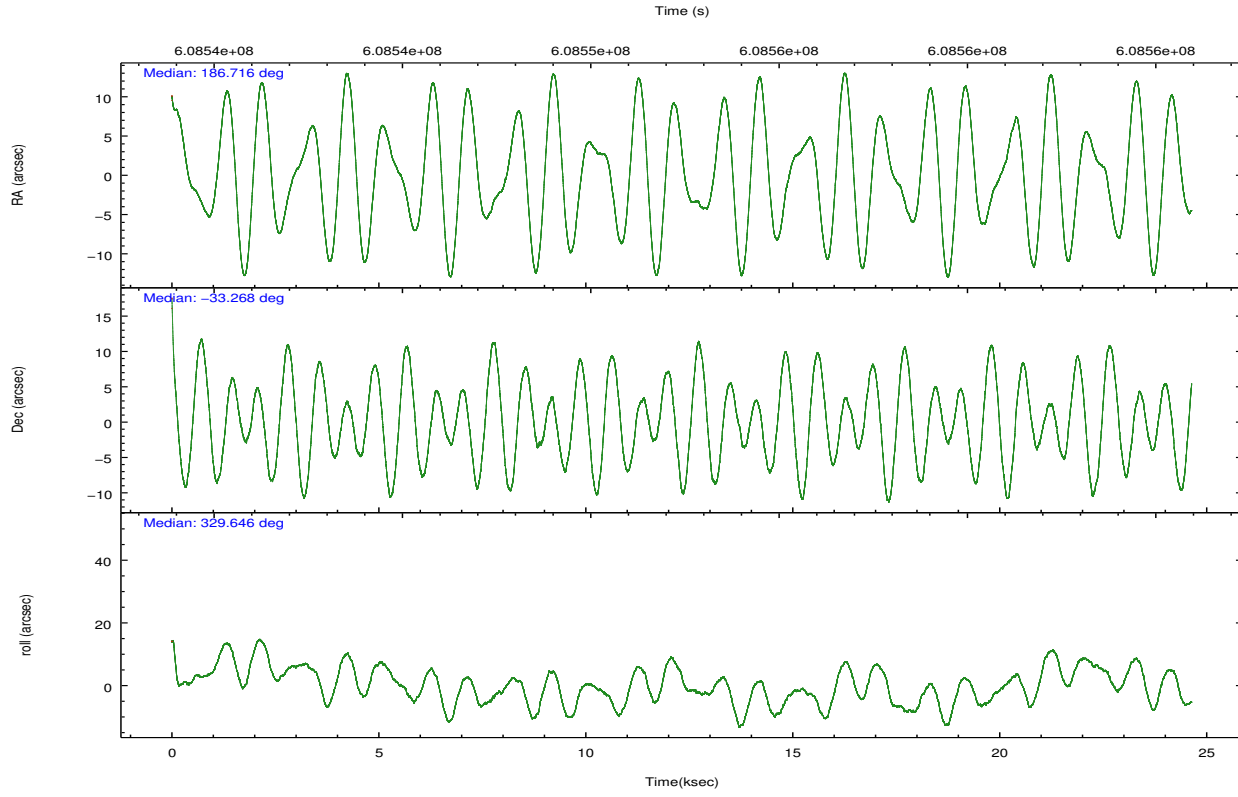
2.2 Compared Parameters

Parameter	Planned	Actual
Instrument	ACIS	ACIS
Detector	ACIS-5678	ACIS-5678
Grating	NONE	NONE
Data mode	VFAINT	VFAINT
Observation mode	POINTING	POINTING
[deg] Pointing RA	186.683313	186.7161569439326
[deg] Pointing Dec	-33.268242	-33.26805279919644
[deg] Pointing Roll	329.483991	329.6586435449108
[mm] SIM focus pos	-0.684267	-0.6828225247311905
[mm] SIM defocus	0	0.001444936568705701
[mm] SIM translation stage pos	-190.132523	-190.1425803651734
[mm] SIM translation stage offset	0	0.01005778216563158
[s] Observation start time (MET)	608540238.184000	608538837.4931099
Observation start date	2017-04-14T06:56:09	2017-04-14T06:33:57
[s] Observation end time (MET)	608564738.184000	608565521.3196501
Observation end date	2017-04-14T13:44:29	2017-04-14T13:58:41
Read mode	TIMED	TIMED

Parameter	Planned	Actual
Obspar format version number	7	7
Obspar file type	PREDICTED	ACTUAL
Obspar update status	NONE	UPDATED
CCD I0 on	N	N
CCD I1 on	N	N
CCD I2 on	O1	N
CCD I3 on	O2	N
CCD S0 on	N	N
CCD S1 on	Y	Y
CCD S2 on	Y	Y
CCD S3 on	Y	Y
CCD S4 on	Y	Y
CCD S5 on	N	N
Number of optional ACIS chips dropped	2	2
On-chip summing requested	N	N
Subarray requested	NONE	NONE
Alternating exposures requested	N	N
[s] Primary exposure time	0.000000	3.1

2.3 Aspect



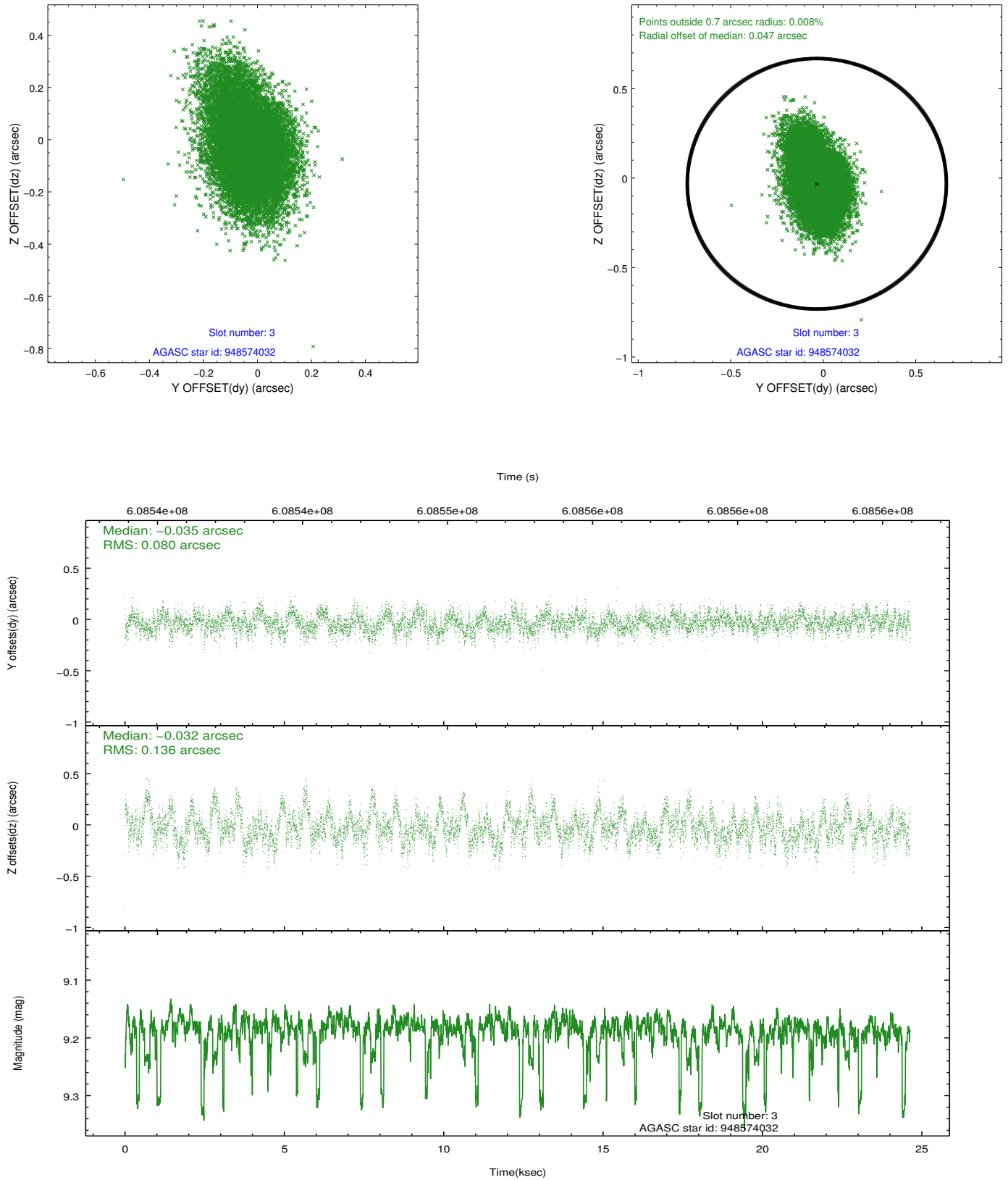


Slot Statistics

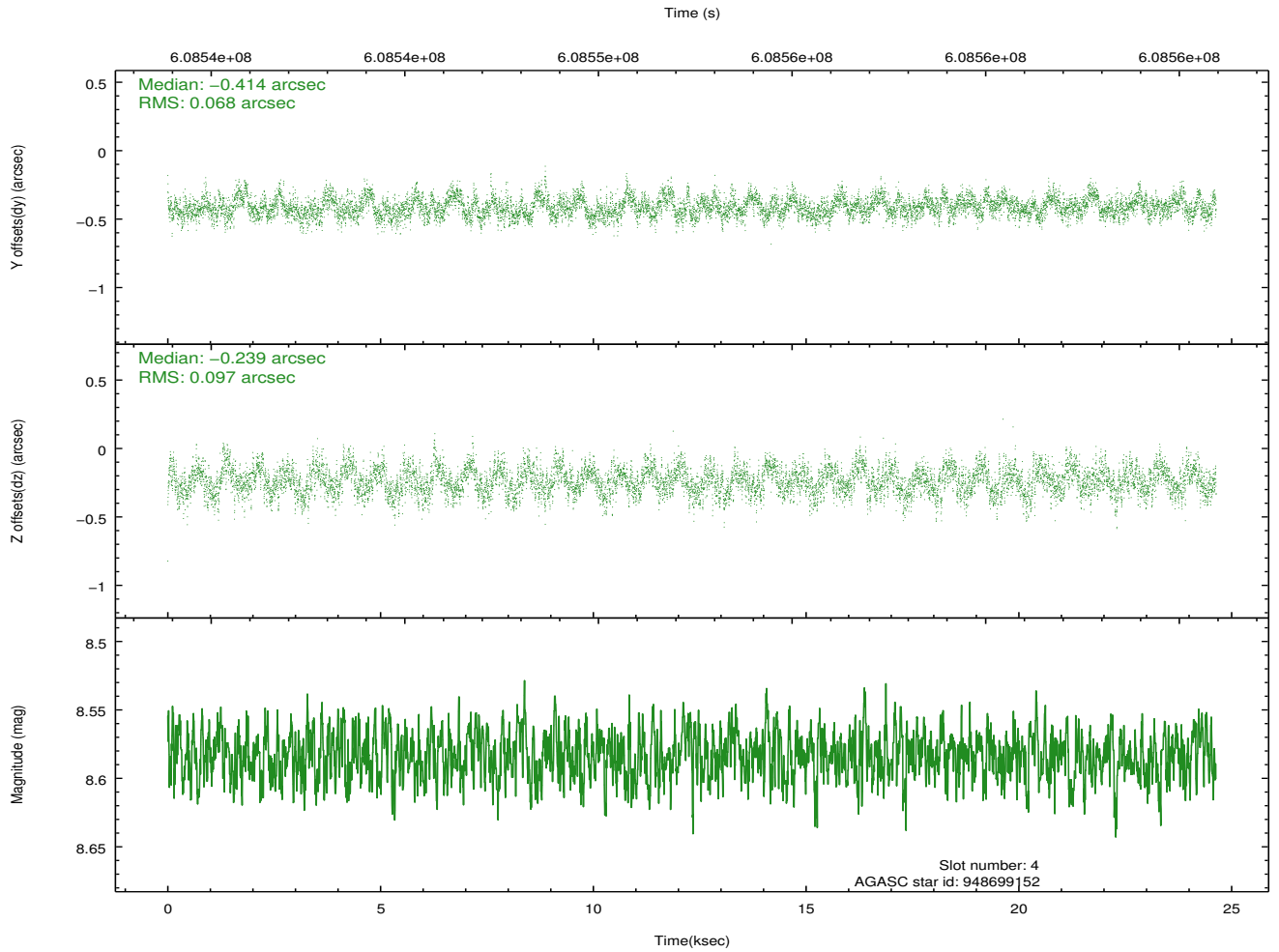
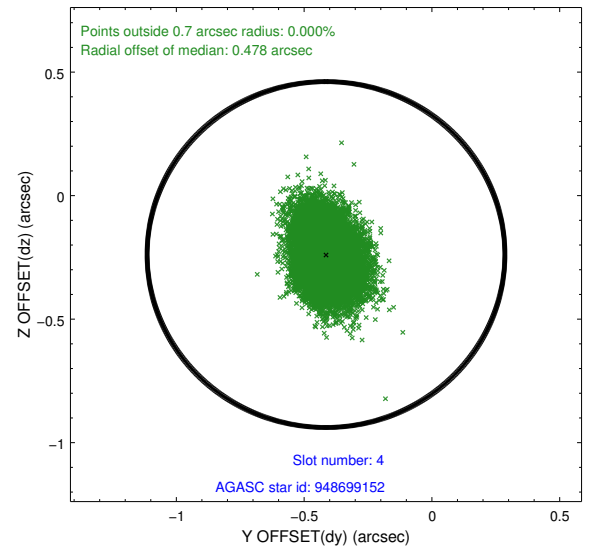
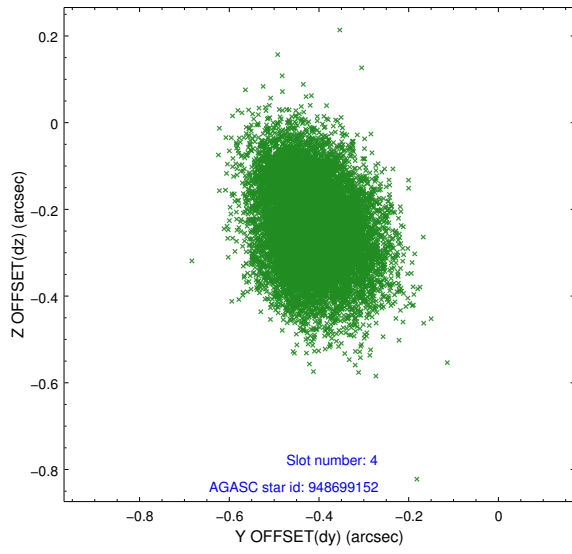
slot	status	used	id	mag	n_pts	med_dy	med_dz	dr1	dr2	ra	dec	mean_y	mean_z
0	FID		ACIS-S-2	7.09	6010	-0.177	-0.061	0.011	0.018	0.000000	0.000000	-764.08	-1737.38
1	FID		ACIS-S-4	7.22	6010	0.429	0.102	0.010	0.018	0.000000	0.000000	2149.71	171.19
2	FID		ACIS-S-5	7.21	6008	-0.285	-0.032	0.009	0.016	0.000000	0.000000	-1816.91	164.80
3	GUIDE	used	948574032	9.19	12003	-0.035	-0.032	0.163	0.286	186.724894	-32.980039	-418.69	957.26
4	GUIDE	used	948699152	8.58	12008	-0.414	-0.239	0.126	0.205	187.040667	-33.241528	878.65	627.48
5	GUIDE	used	948699856	7.92	12017	0.237	0.192	0.097	0.170	186.843743	-32.777129	-479.12	1769.33
6	GUIDE	used	948706240	7.11	12013	-0.053	-0.373	0.107	0.179	187.526517	-33.328387	2300.24	1092.50
7	GUIDE	used	949094576	9.74	11959	0.262	0.460	0.270	0.439	186.691561	-34.016590	1390.44	-2307.76

2.4 Star Slots

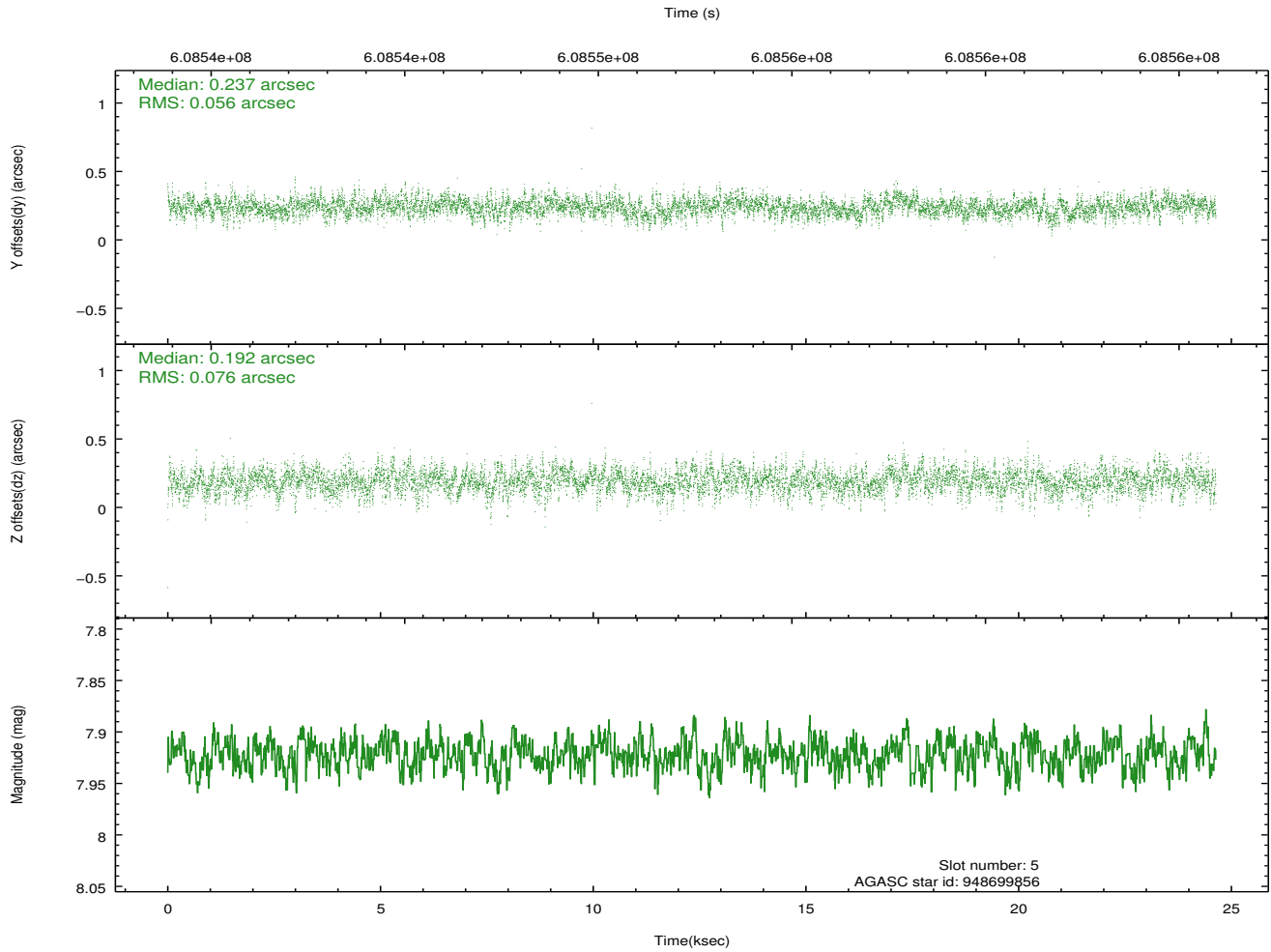
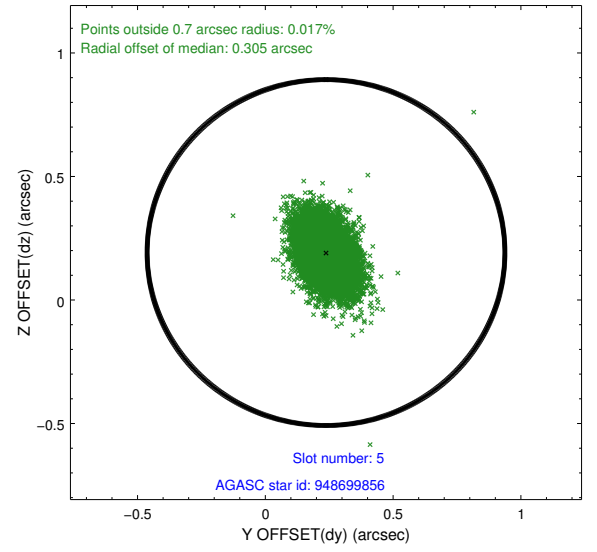
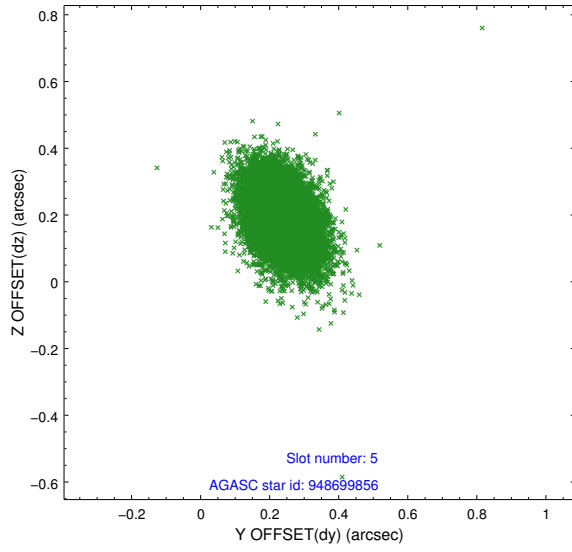
2.4.1 Slot 3



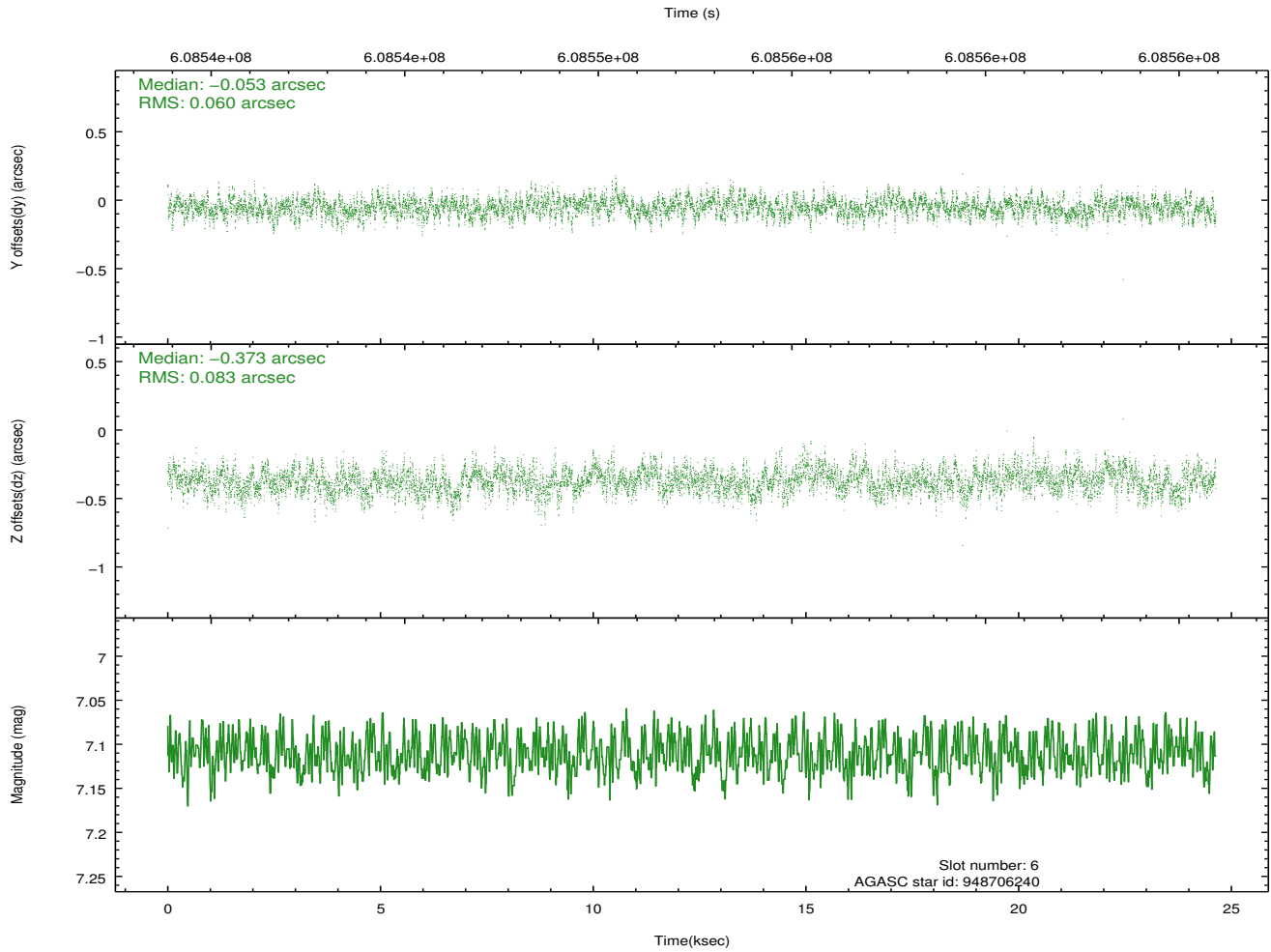
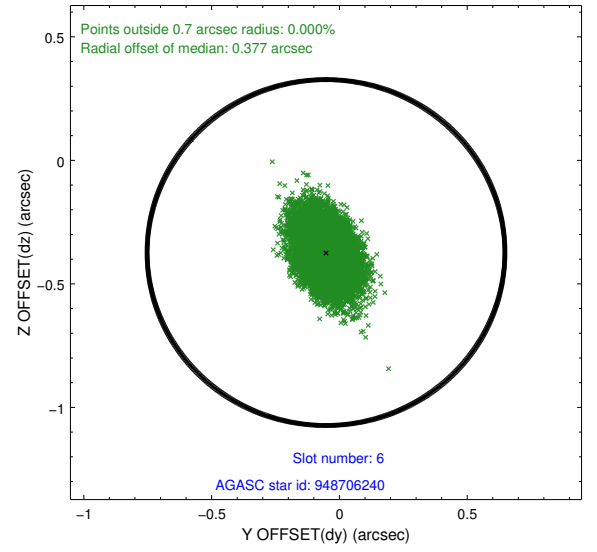
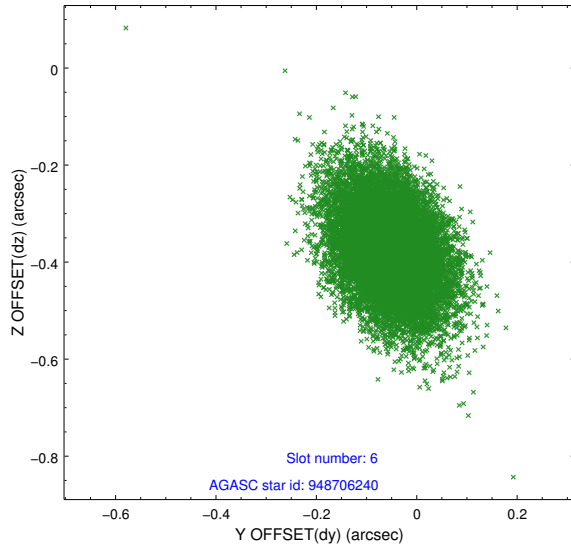
2.4.2 Slot 4



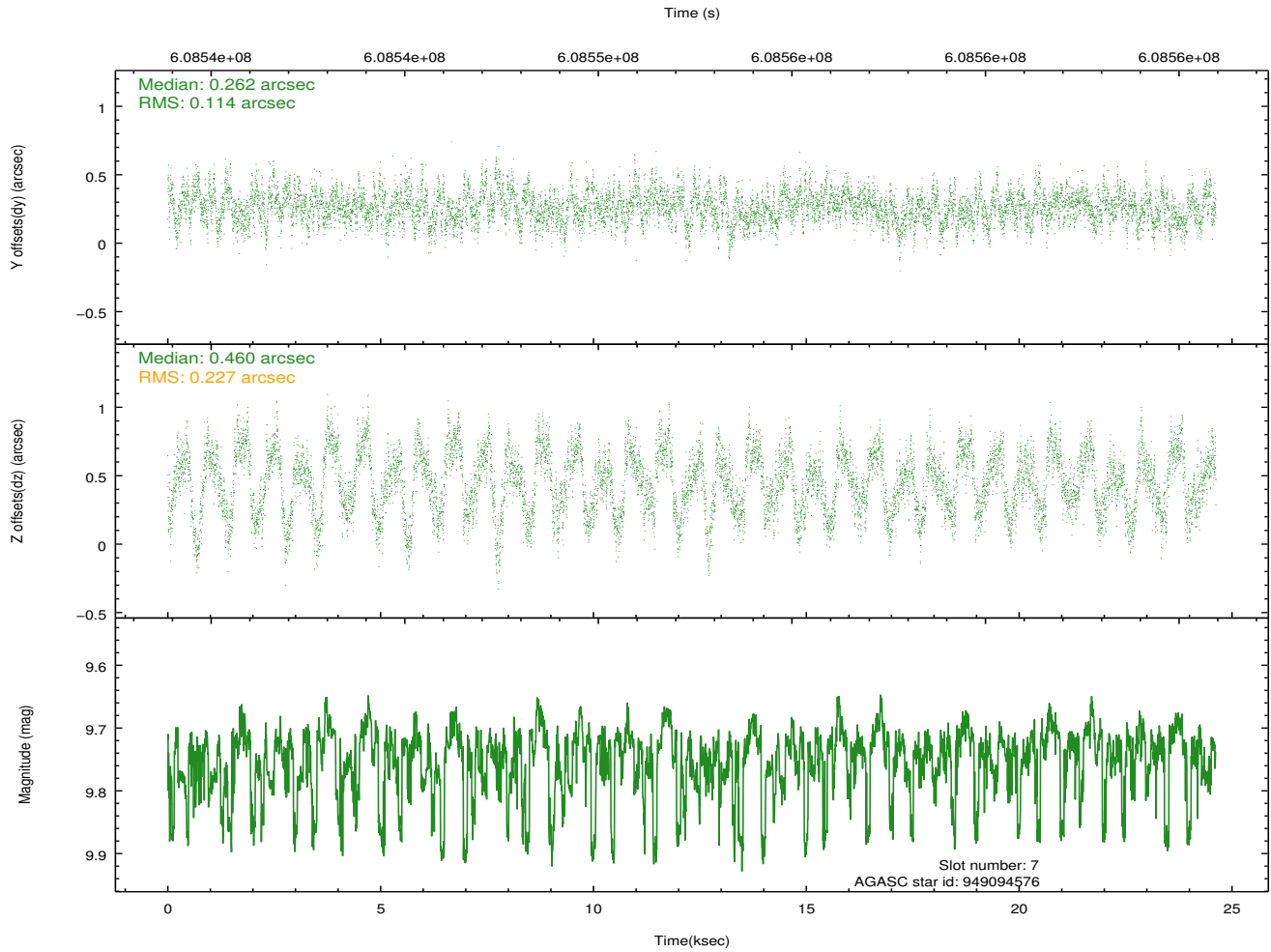
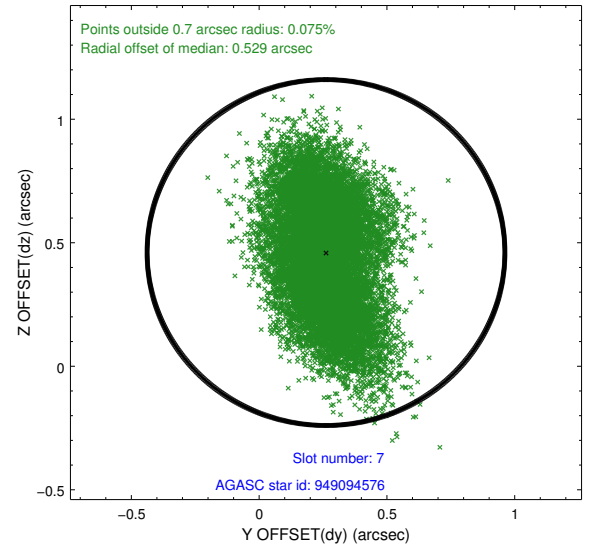
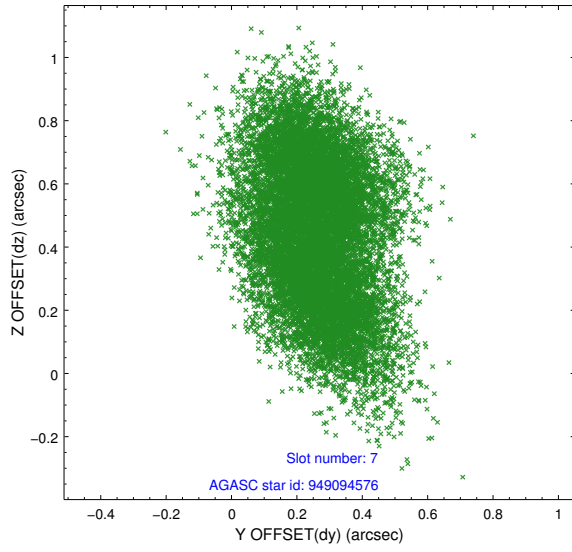
2.4.3 Slot 5



2.4.4 Slot 6

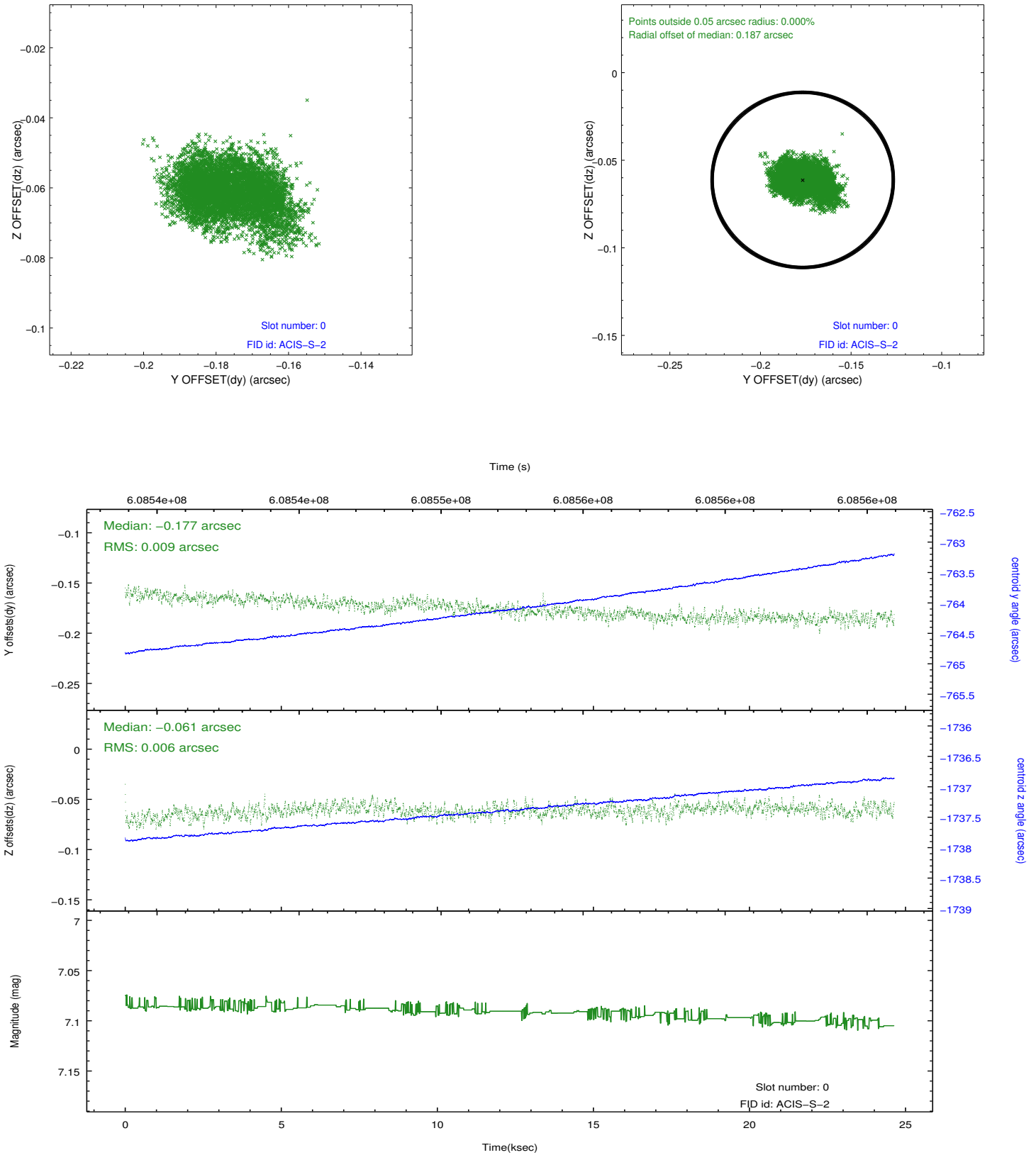


2.4.5 Slot 7

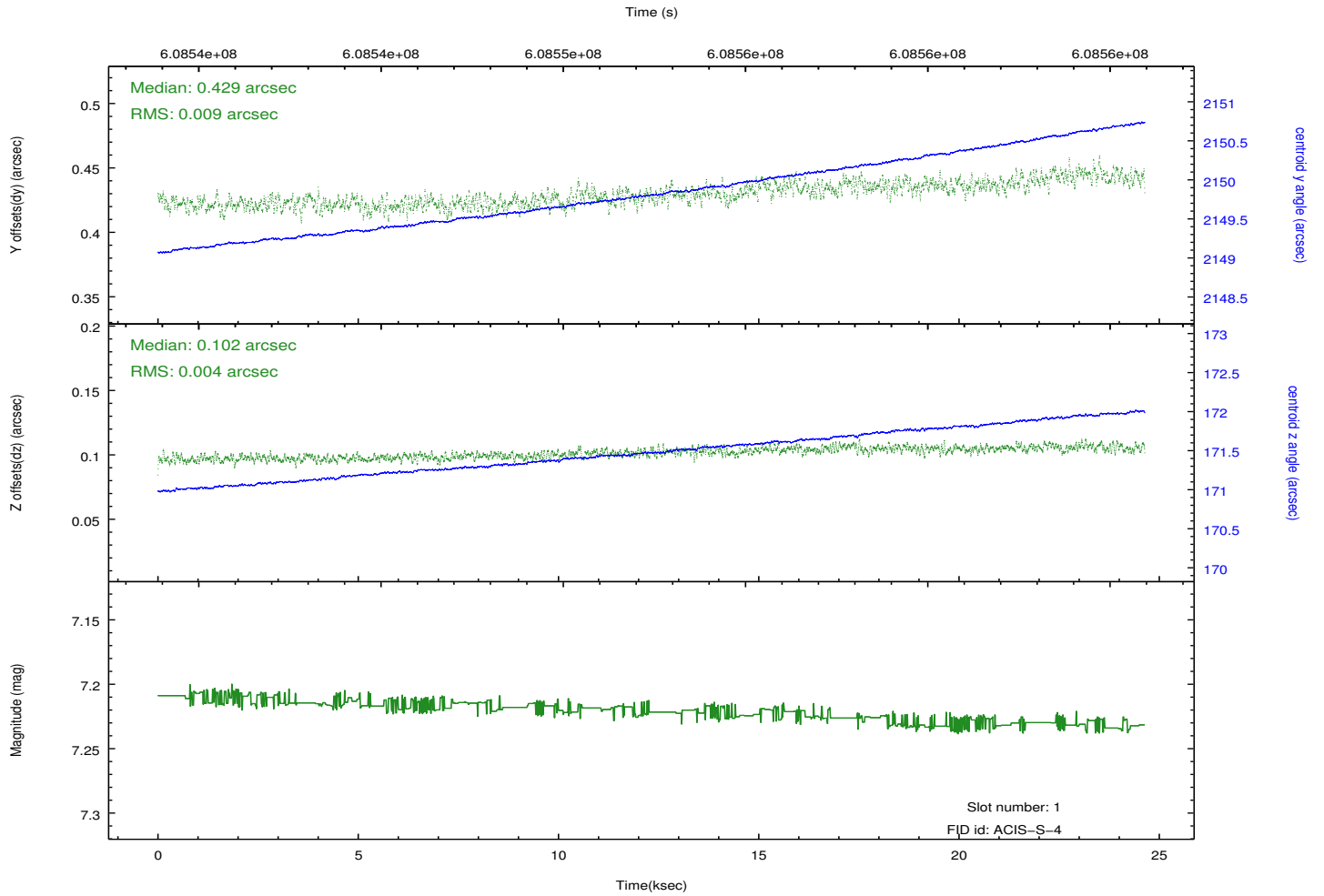
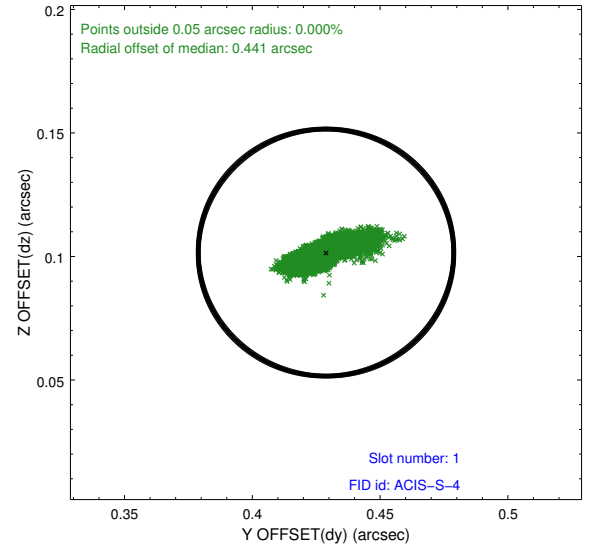
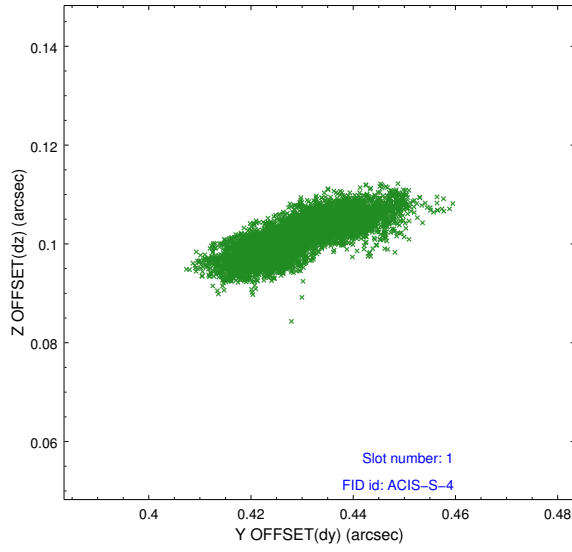


2.5 FID Slots

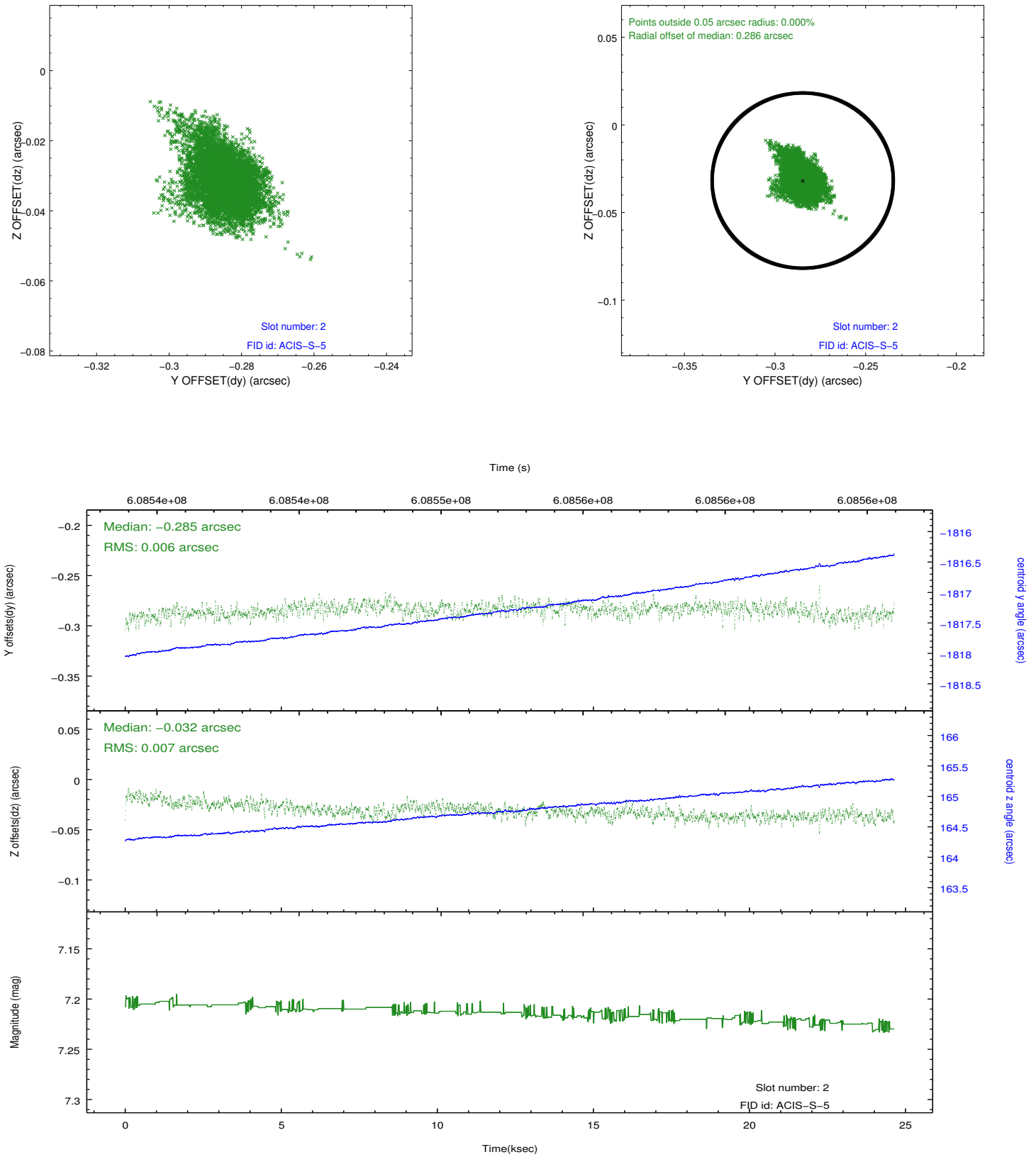
2.5.1 Slot 0



2.5.2 Slot 1



2.5.3 Slot 2



A Summary

A.1 Status

V&V Scientist	Beth Sundheim
V&V Date (YYYY-MM-DD)	2017.04.16
V&V Edition	1
V&V Disposition and Status	OK
V&V Charge Time	24.561300189018

A.2 Comments

Two optional chips were dropped.