

V&V Reference Report

L2 ASCDS Version : 10.5.2

Observation 18932 - L2 Version 1
Chandra X-Ray Center

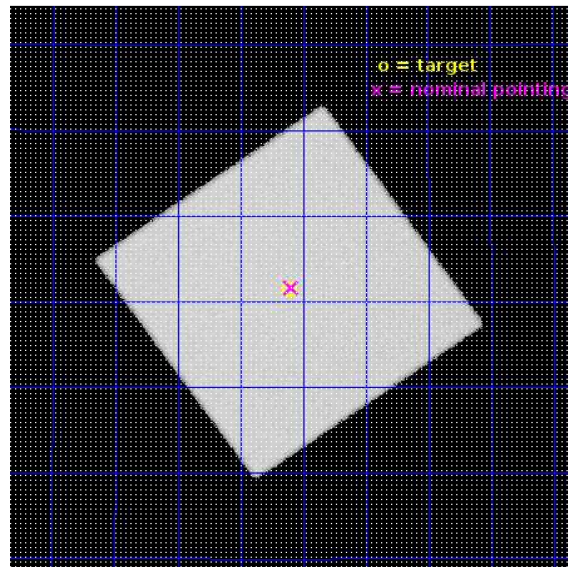
L2 Processing Date : Feb 5 2017

Contents

1	Front	2
2	OBI	3
2.1	OBI	3
2.1.1	Images	3
2.1.2	Parameters	4
2.1.3	Events	4
2.2	Compared Parameters	5
2.3	Aspect	6
2.4	Star Slots	9
2.4.1	Slot 3	9
2.4.2	Slot 4	10
2.4.3	Slot 5	11
2.4.4	Slot 6	12
2.4.5	Slot 7	13
2.5	FID Slots	14
2.5.1	Slot 0	14
2.5.2	Slot 1	15
2.5.3	Slot 2	16
A	Summary	17
A.1	Status	17
A.2	Comments	17

1 Front

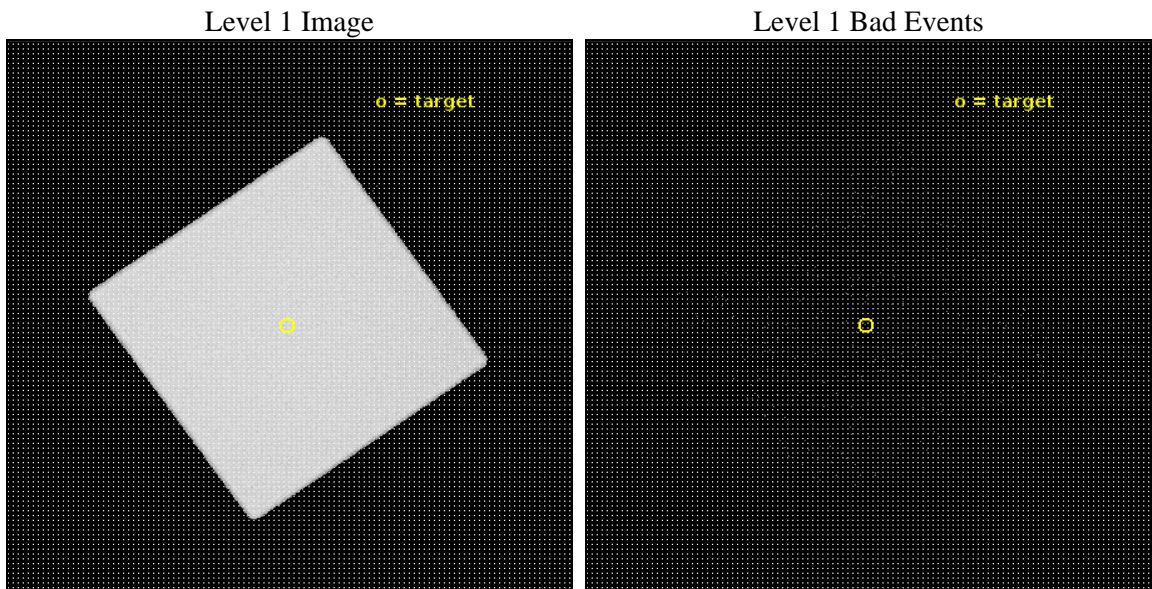
seq_num	201125	Sequence number
obs_id	18932	Observation id
title	What is the hottest cool star?	Proposal title
observer	Hans Guenther	Principal investigator
object	delta Leo	Source name
ra_targ	168.527083	Observer's specified target RA [deg]
dec_targ	20.523611	Observer's specified target Dec [deg]
ra_nom	168.52313725088	Nominal RA [deg]
dec_nom	20.527229613462	Nominal Dec [deg]
roll_nom	99.905873062479	Nominal Roll [deg]
revision	1	Processing version of data
ontime	10183.631840348	[s]
livetime	10058.417685409	Ontime multiplied by DTCOR
l2events	1056298	Number of level 2 events



2 OBI

2.1 OBI

2.1.1 Images



2.1.2 Parameters

obi_num	0	Obi number	sched_exp_time	10000.000000	[s] Scheduled observation exposure time
ascdsver	10.5.2	Processing system revision	ontime	10183.631840348	[s]
caldsver	4.7.3	 	l1events	1468558	Number of level 1 events
date	2017-02-05T14:37:55	Date and time of file creation			
revision	1	Processing version of data			

2.1.3 Events

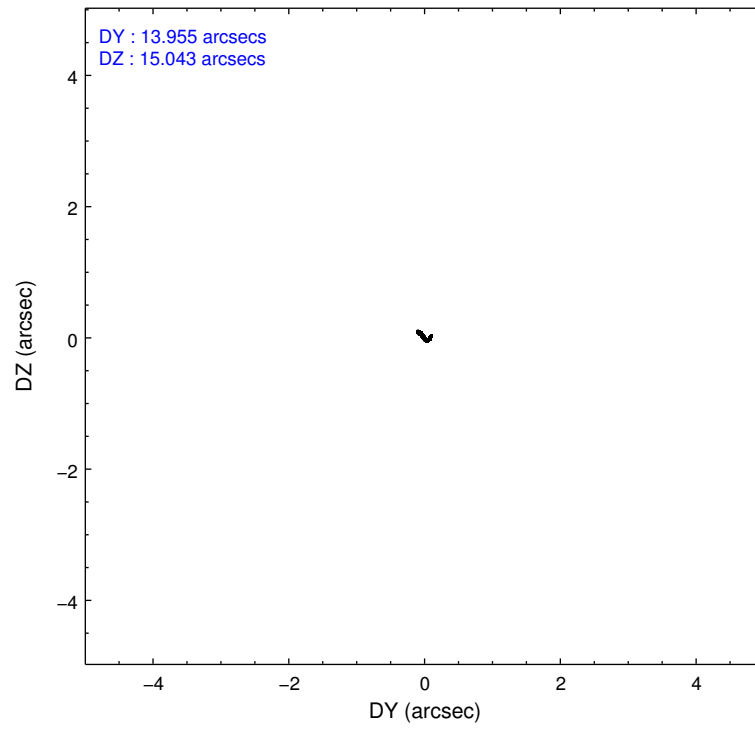
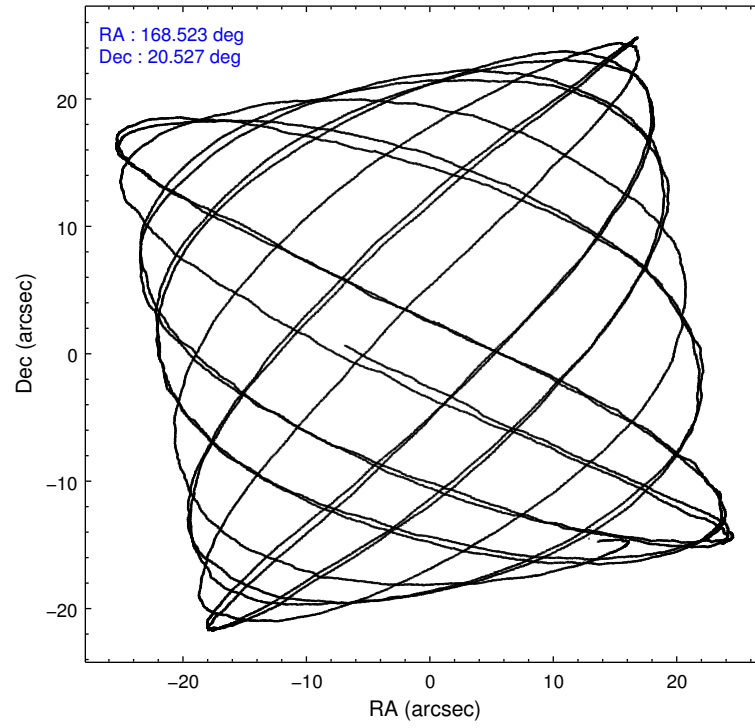
Level 1 Events

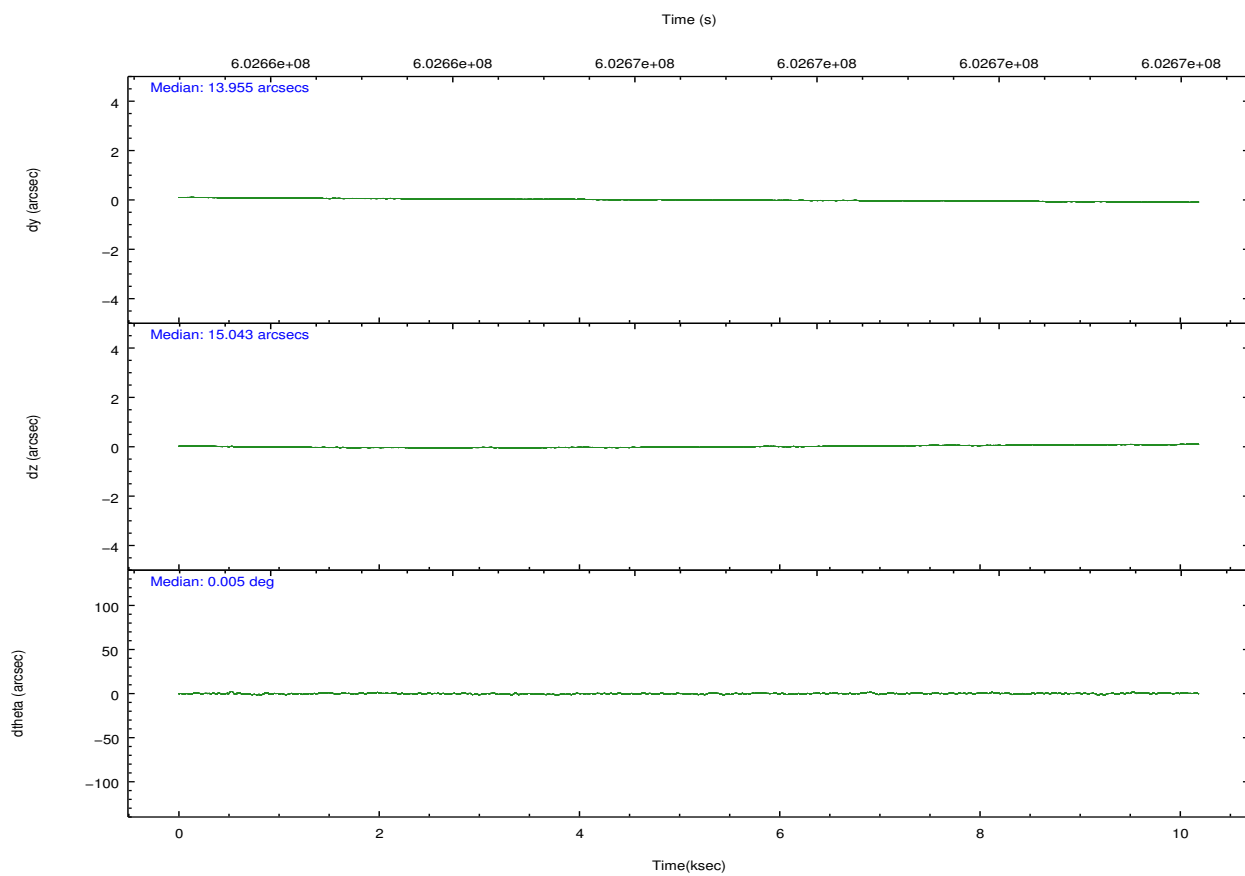
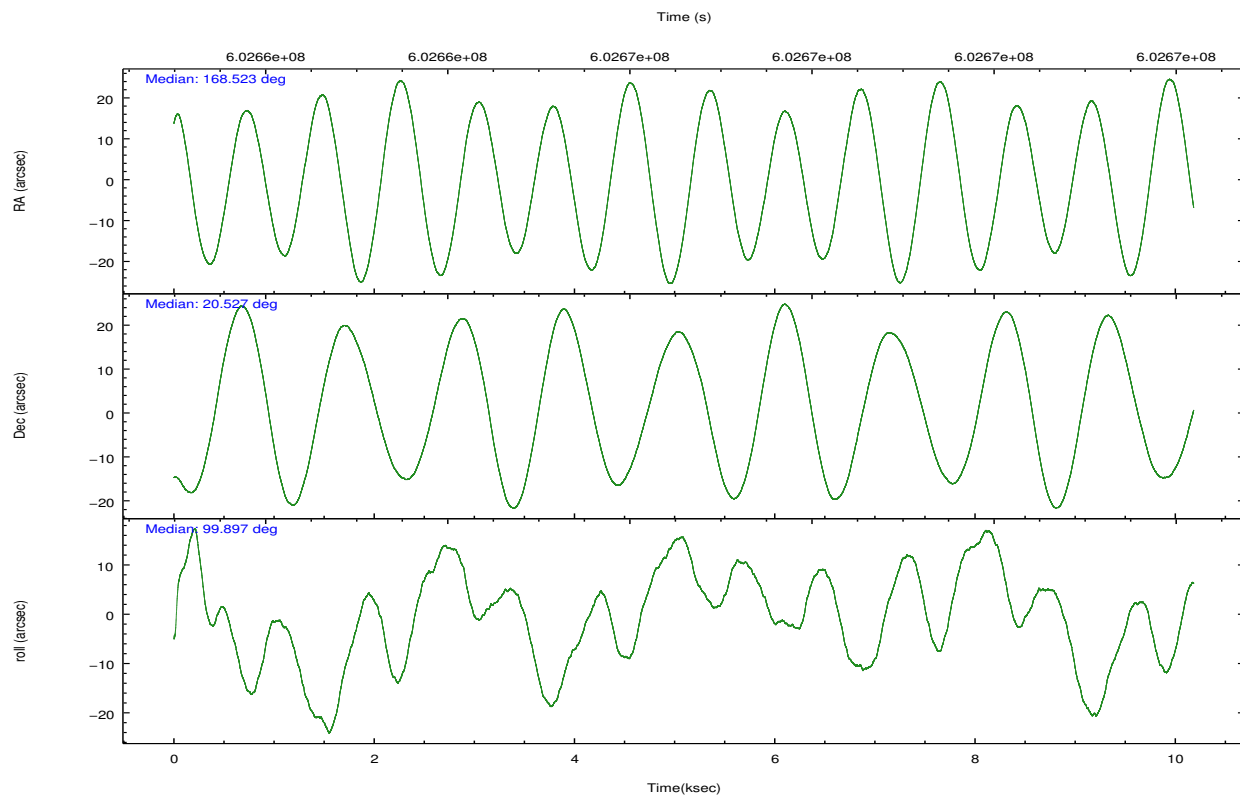
	segment 0
level 1 events	1468558
rejected events	69629
rejected %	4%

2.2 Compared Parameters

Parameter	Planned	Actual	Parameter	Planned	Actual
Instrument	HRC	HRC	Obspar format version number	7	7
Detector	HRC-I	HRC-I	Obspar file type	PREDICTED	ACTUAL
Grating	NONE	NONE	Obspar update status	NONE	UPDATED
Data mode	OBSERVING	OBSERVING			
Observation mode	POINTING	POINTING			
[deg] Pointing RA	168.542282	168.5231372508801			
[deg] Pointing Dec	20.506831	20.52722961346162			
[deg] Pointing Roll	99.994681	99.90587306247944			
[mm] SIM focus pos	-1.040293	-1.038866356238299			
[mm] SIM defocus	0	0.001426264420575141			
[mm] SIM translation stage pos	126.985494	126.9829799899862			
[mm] SIM translation stage offset	0	0.002508901615314585			
[s] Observation start time (MET)	602661704.184000	602660936.21469			
Observation start date	2017-02-05T06:00:35	2017-02-05T05:48:56			
[s] Observation end time (MET)	602671704.184000	602672496.16536			
Observation end date	2017-02-05T08:47:15	2017-02-05T09:01:36			

2.3 Aspect



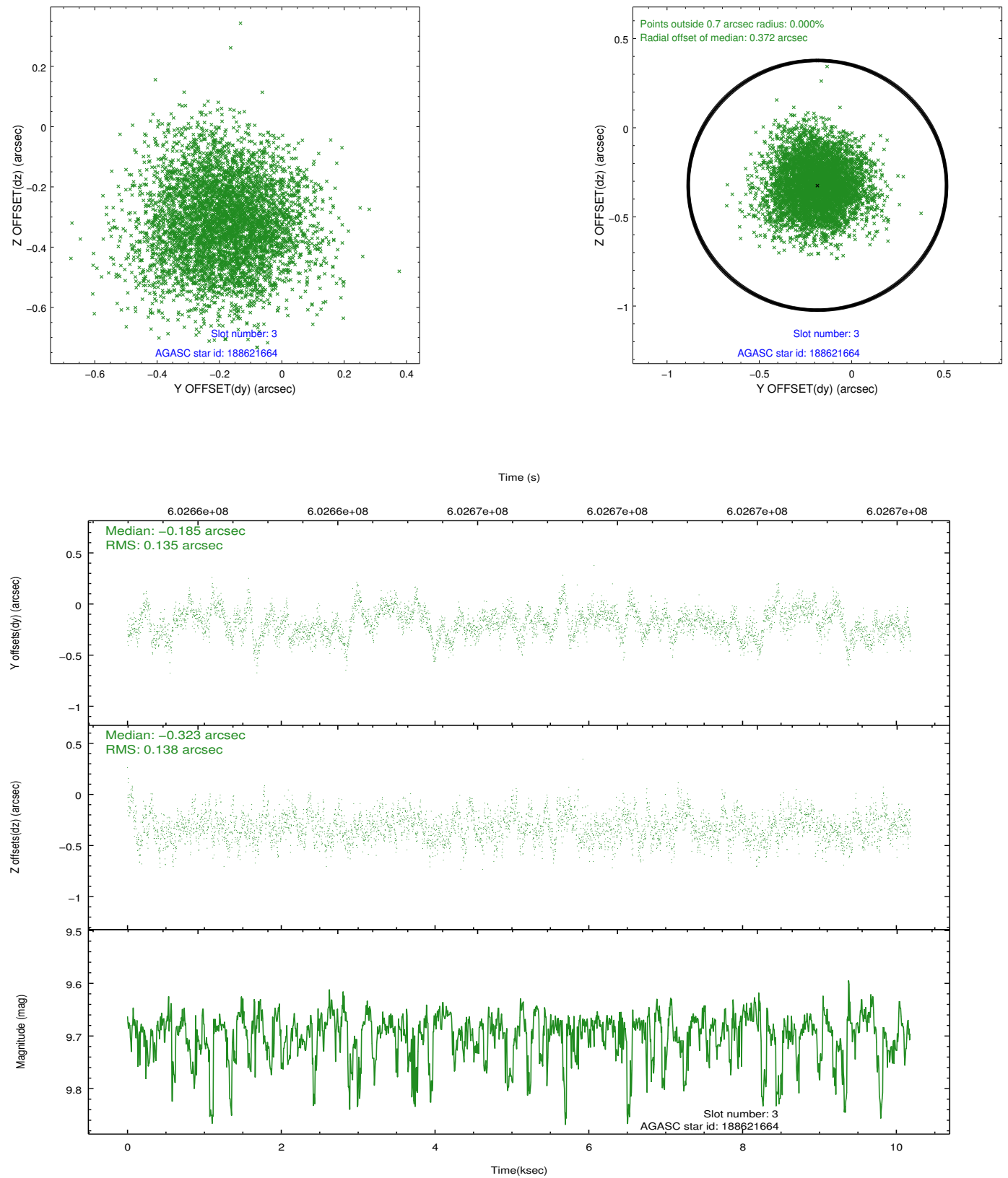


Slot Statistics

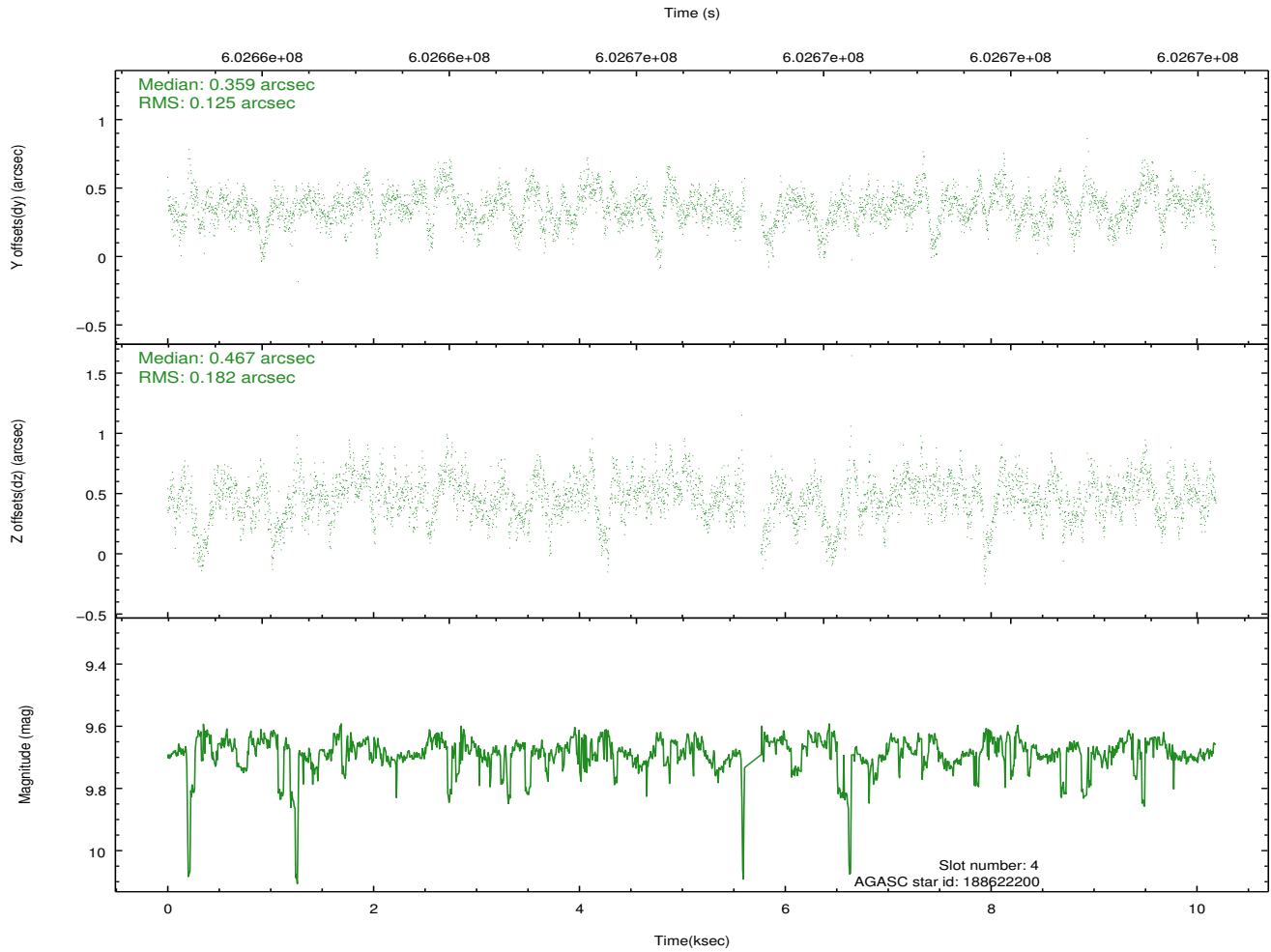
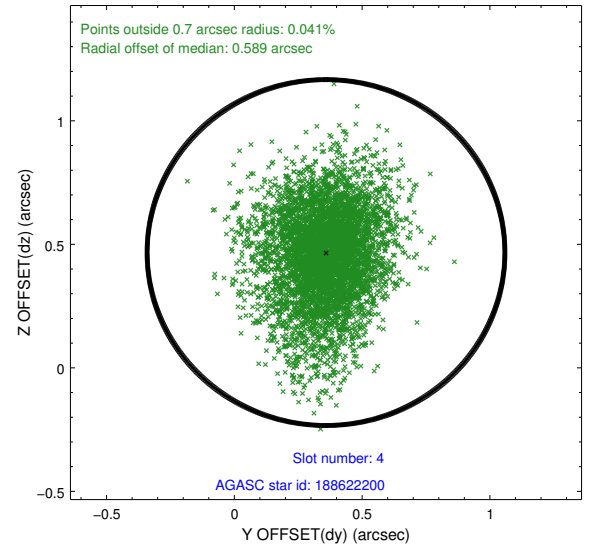
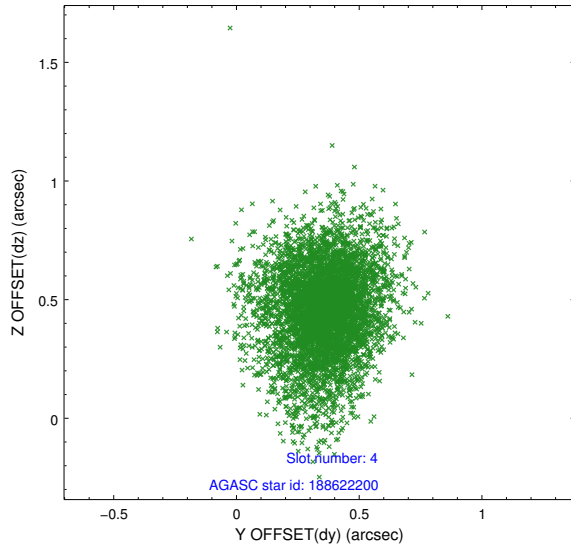
slot	status	used	id	mag	n_pts	med_dy	med_dz	dr1	dr2	ra	dec	mean_y	mean_z
0	FID		HRC-I-1	6.99	2484	-0.201	-0.014	0.007	0.013	0.000000	0.000000	-769.85	-1303.19
1	FID		HRC-I-2	7.02	2484	0.336	-0.097	0.007	0.012	0.000000	0.000000	843.00	-1305.28
2	FID		HRC-I-3	7.08	2482	-0.016	0.022	0.007	0.013	0.000000	0.000000	-1197.94	1000.86
3	GUIDE	used	188621664	9.69	4957	-0.185	-0.323	0.206	0.333	168.376550	20.587114	381.89	499.08
4	GUIDE	used	188622200	9.68	4842	0.359	0.467	0.229	0.402	169.044589	20.366555	-787.84	-1581.02
5	GUIDE	used	188622856	10.13	4918	-0.277	0.098	0.316	0.499	168.993109	20.913304	1180.84	-1747.04
6	GUIDE	used	188625328	9.54	4959	0.152	-0.058	0.183	0.308	168.317377	19.993443	-1686.33	1070.15
7	GUIDE	used	188629200	7.27	4968	-0.032	-0.165	0.131	0.215	168.601811	20.030830	-1722.03	99.42

2.4 Star Slots

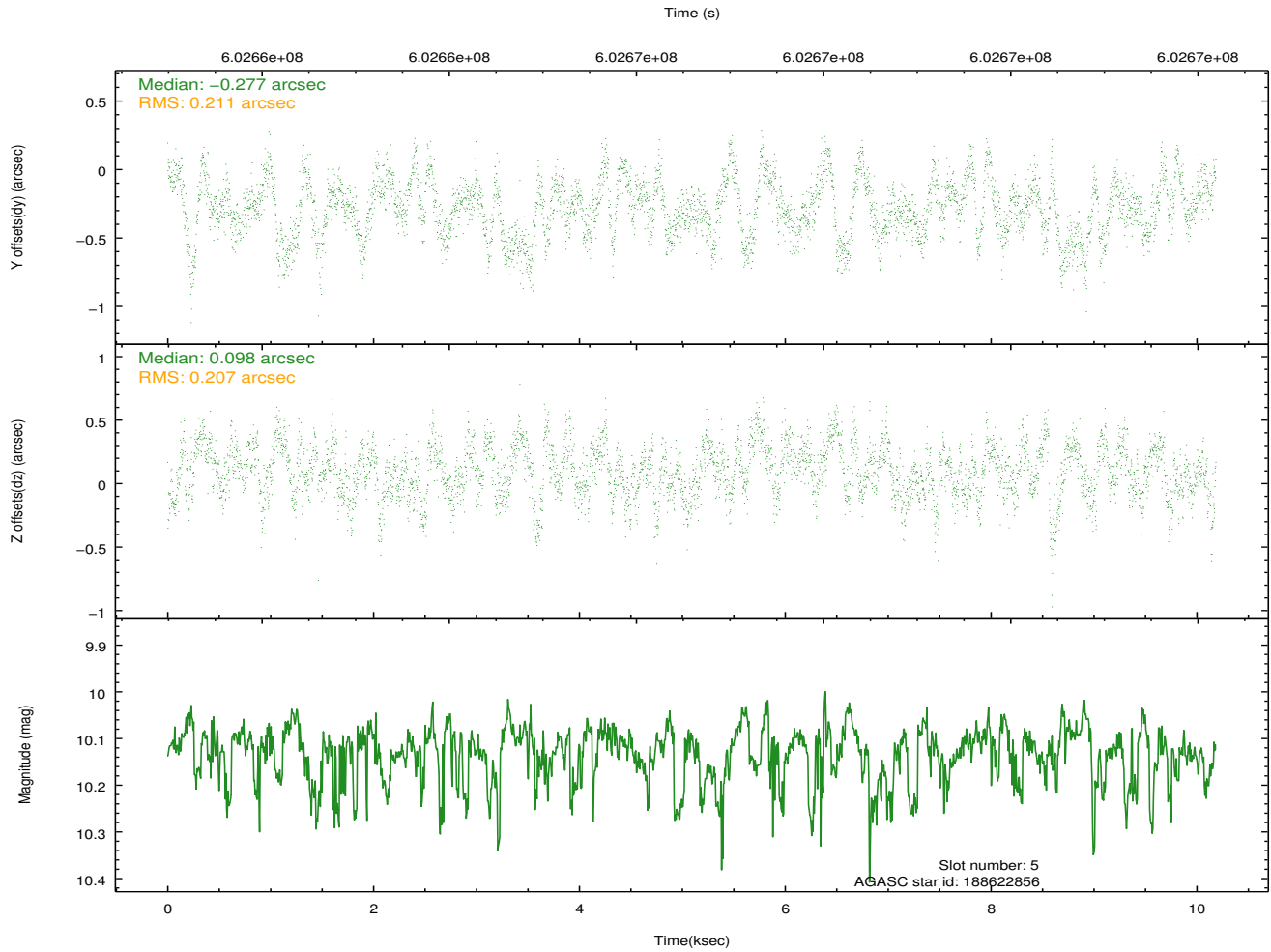
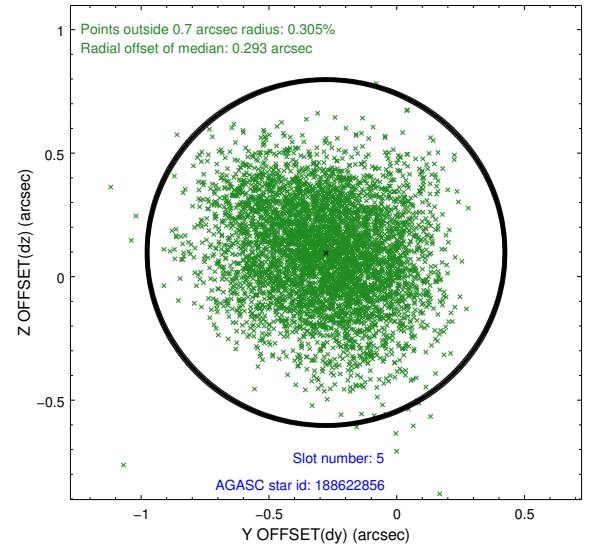
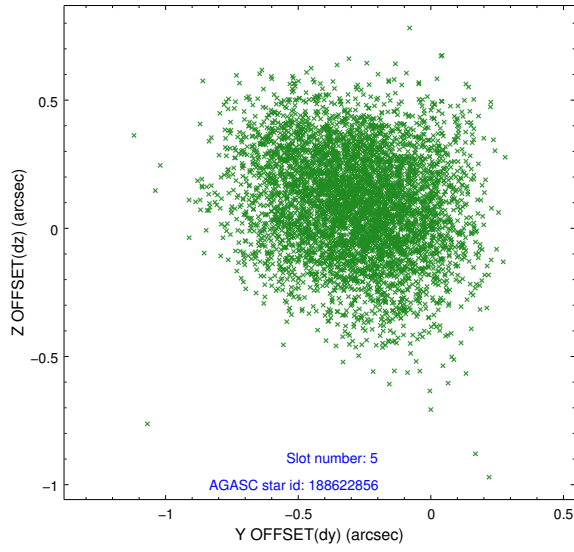
2.4.1 Slot 3



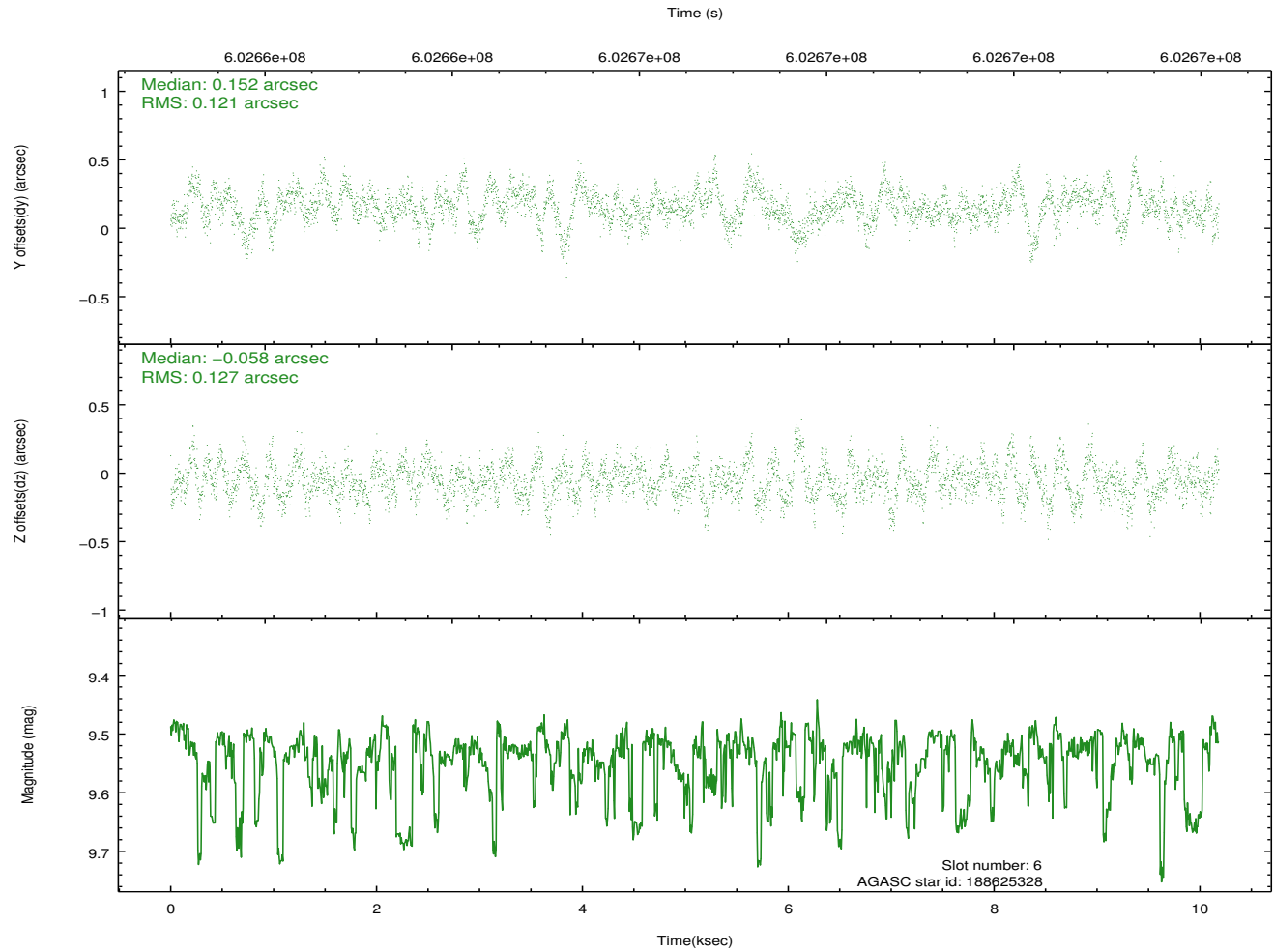
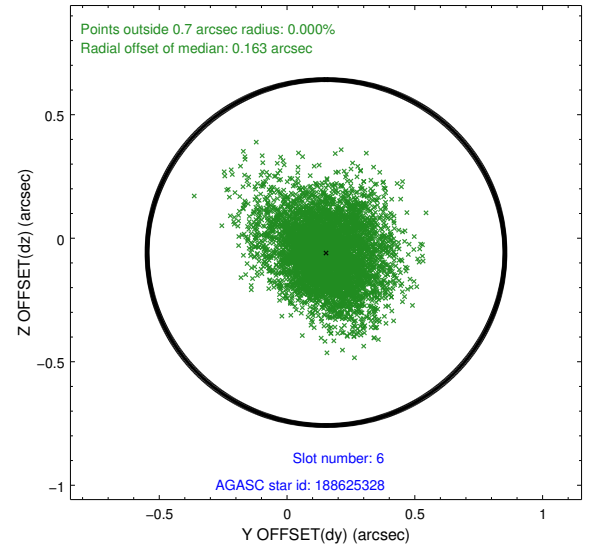
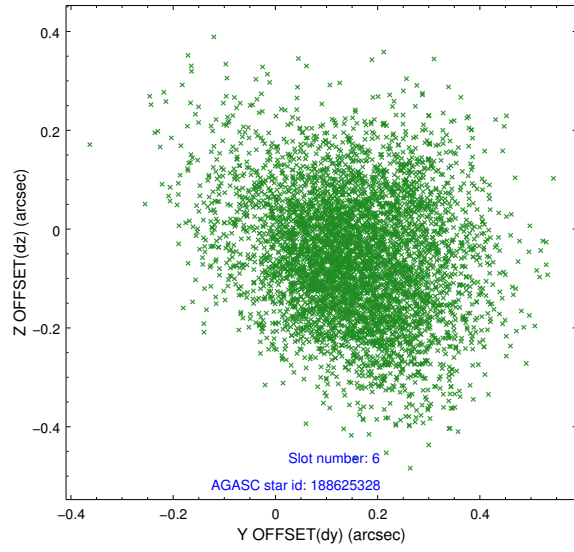
2.4.2 Slot 4



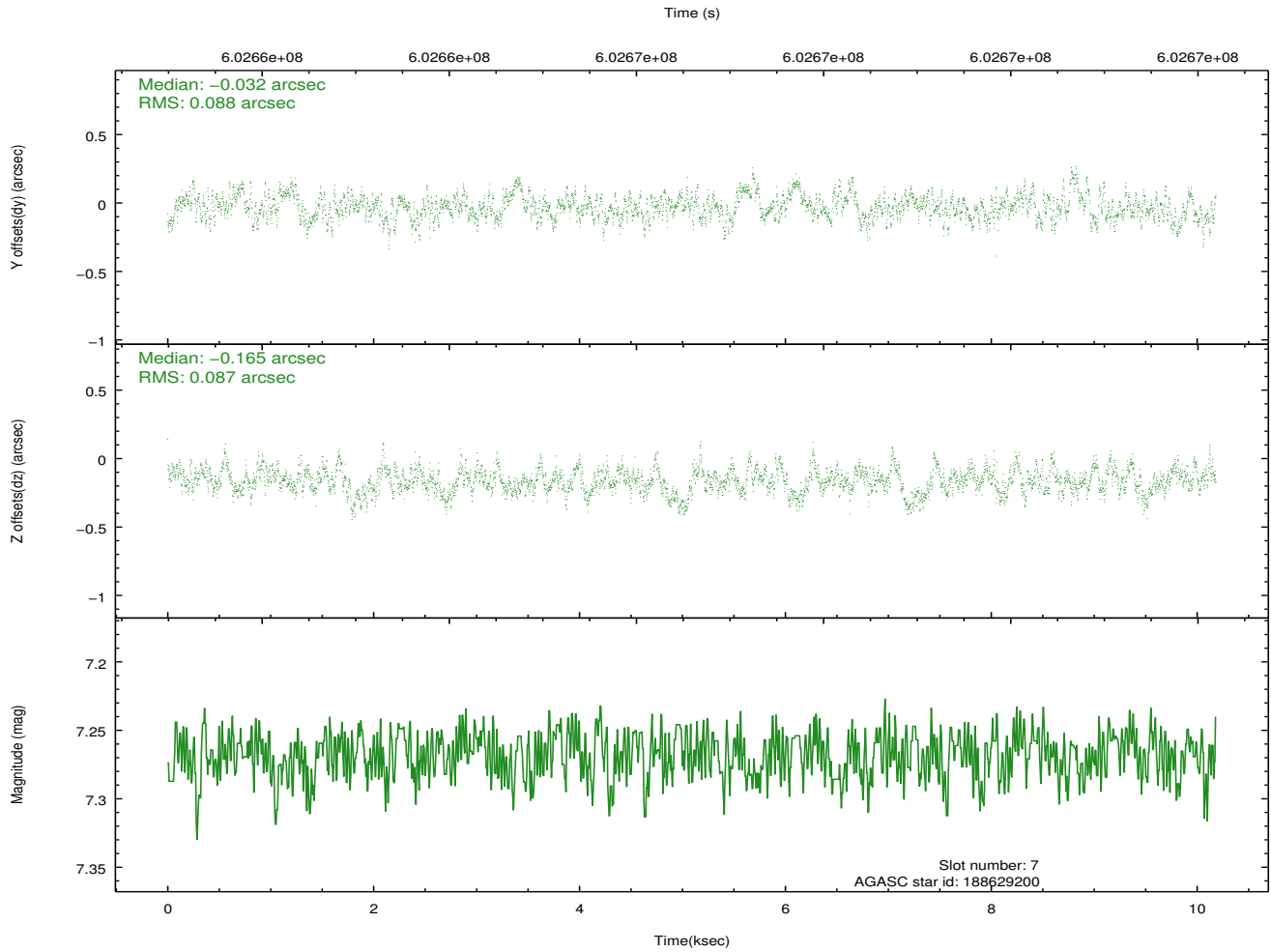
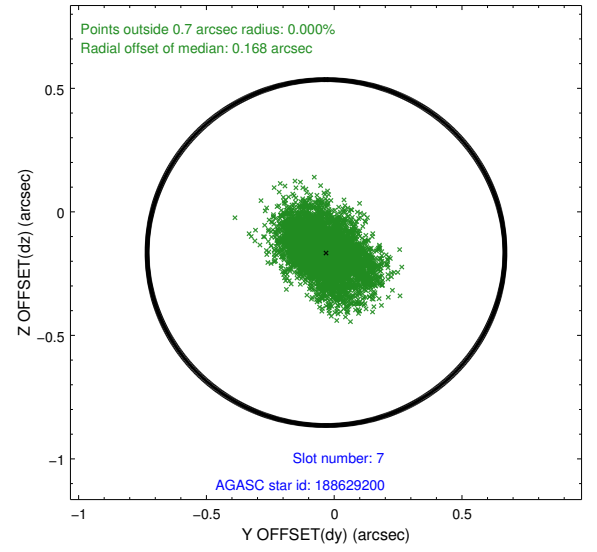
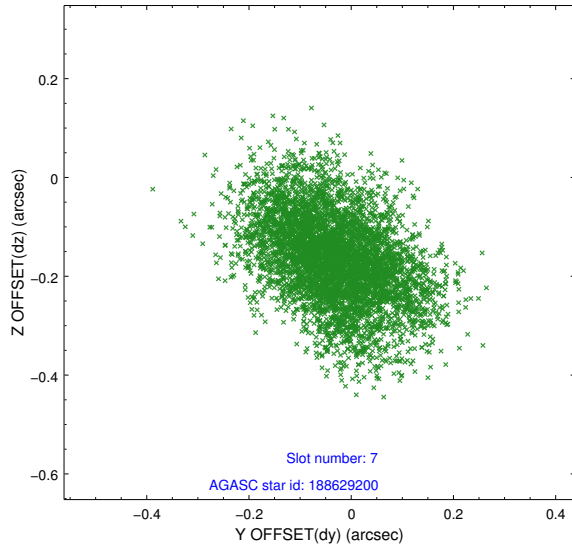
2.4.3 Slot 5



2.4.4 Slot 6

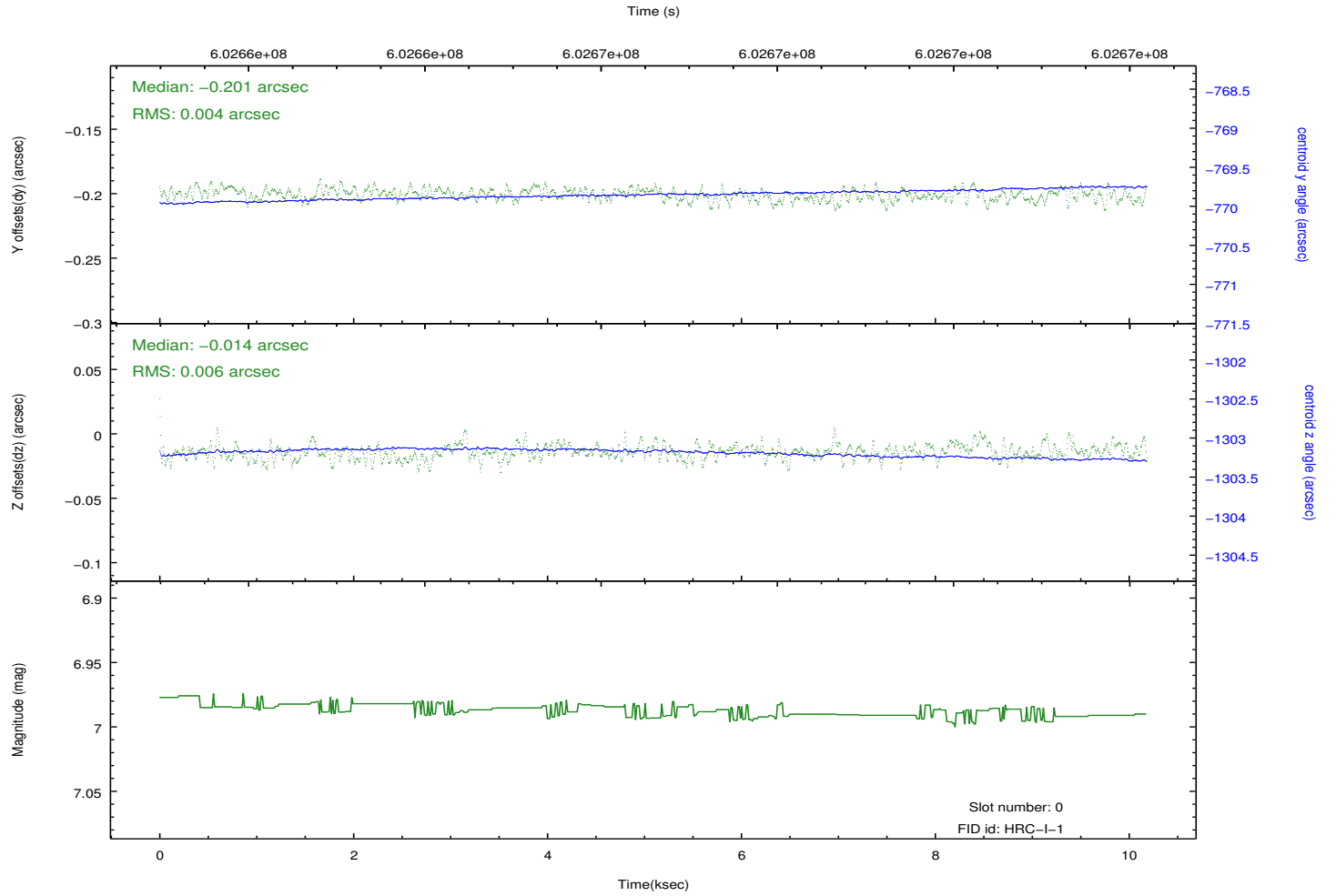
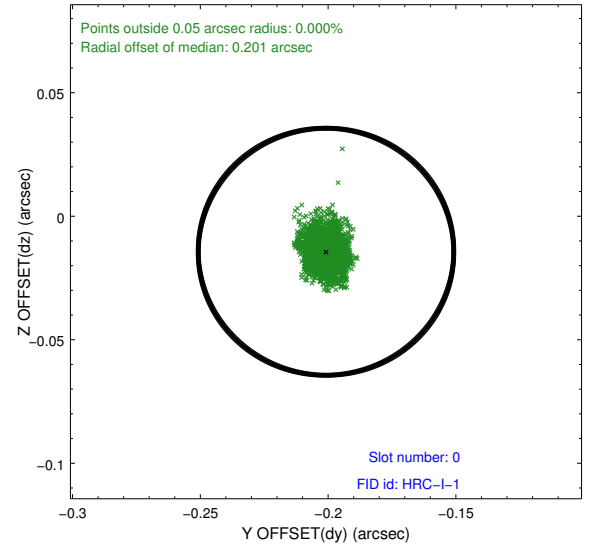
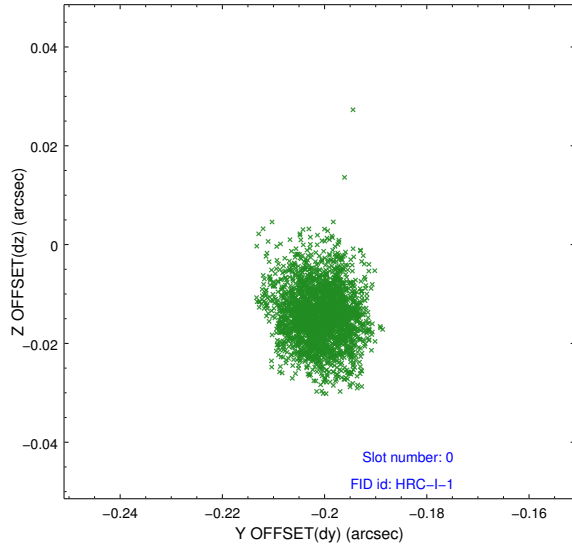


2.4.5 Slot 7

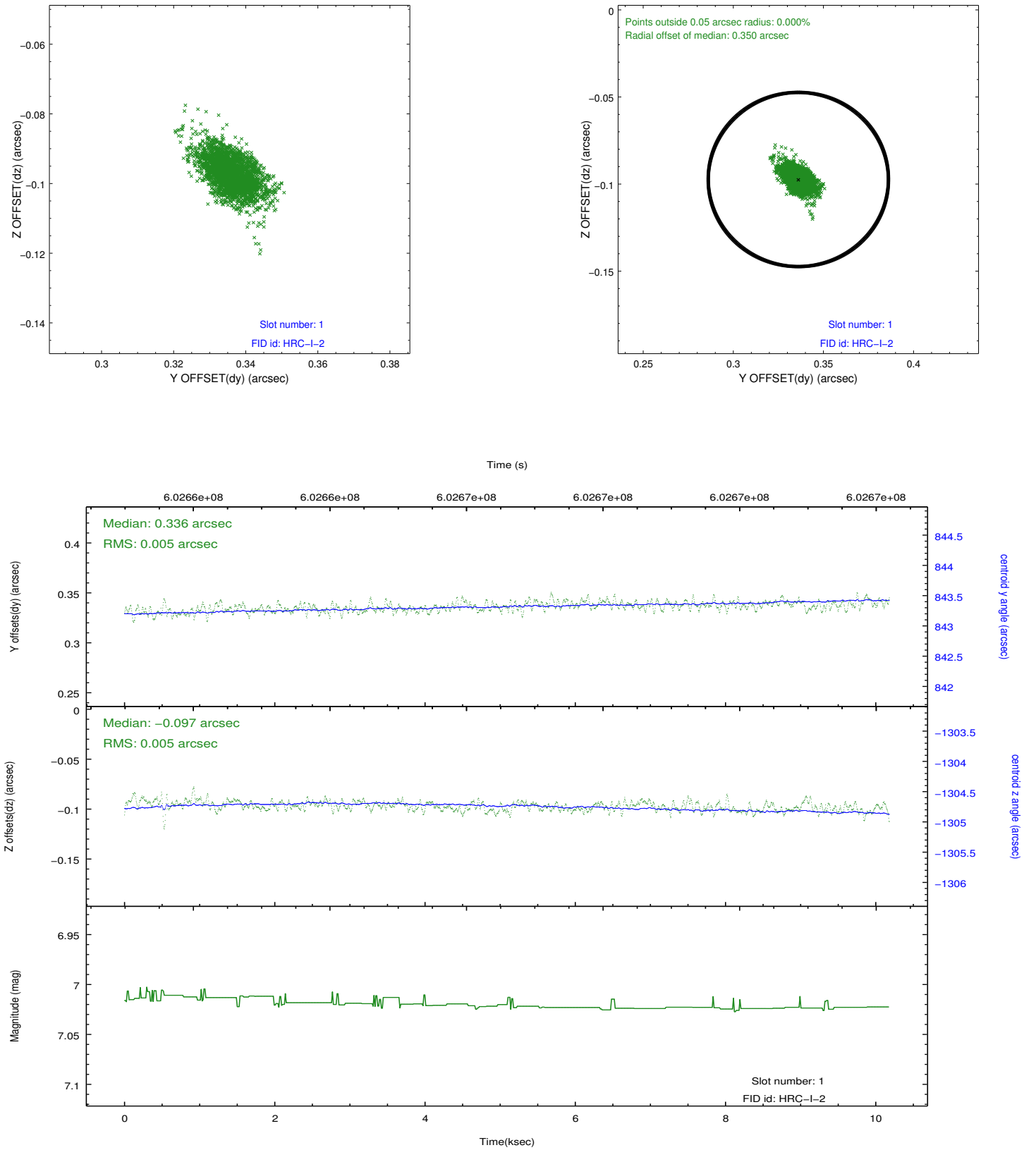


2.5 FID Slots

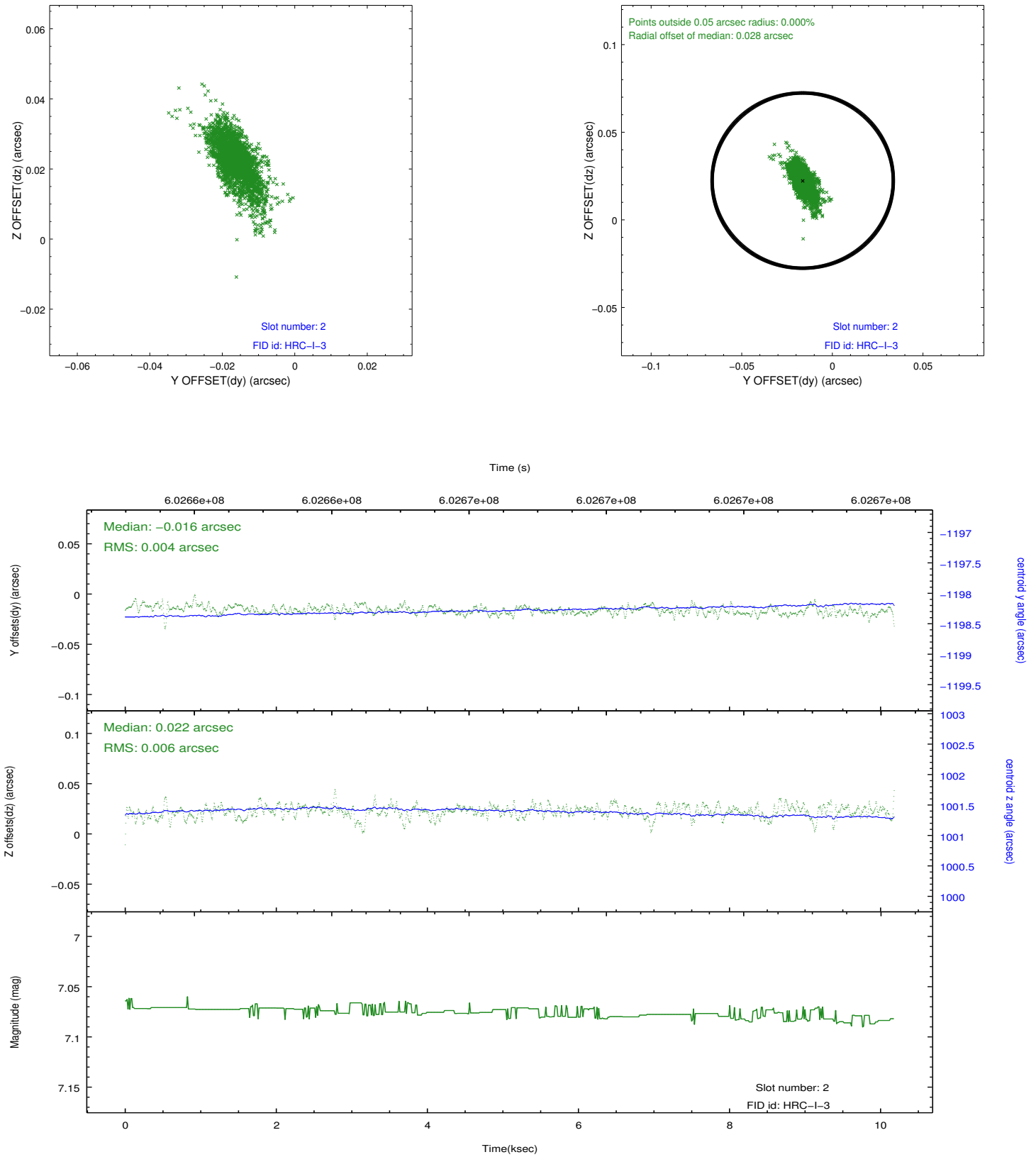
2.5.1 Slot 0



2.5.2 Slot 1



2.5.3 Slot 2



A Summary

A.1 Status

V&V Scientist	Joy Nichols
V&V Date (YYYY-MM-DD)	2017.02.06
V&V Edition	1
V&V Disposition and Status	OK
V&V Charge Time	10.183631840348

A.2 Comments