

# V&V Reference Report

## L2 ASCDS Version : 10.5.4

Observation 18896 - L2 Version 1  
Chandra X-Ray Center

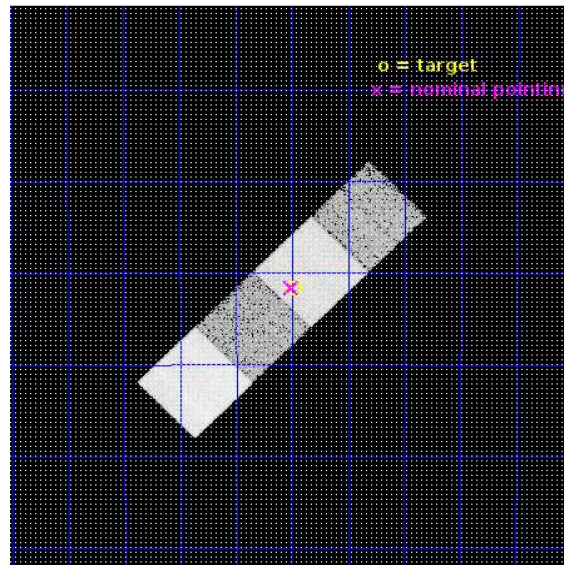
L2 Processing Date : Apr 17 2017

## Contents

<b>1</b>	<b>Front</b>	<b>2</b>
<b>2</b>	<b>OBI</b>	<b>3</b>
2.1	OBI . . . . .	3
2.1.1	Images . . . . .	3
2.1.2	Bias . . . . .	3
2.1.3	Parameters . . . . .	4
2.1.4	Events . . . . .	4
2.2	Compared Parameters . . . . .	5
2.3	Aspect . . . . .	6
2.4	Star Slots . . . . .	9
2.4.1	Slot 3 . . . . .	9
2.4.2	Slot 4 . . . . .	10
2.4.3	Slot 5 . . . . .	11
2.4.4	Slot 6 . . . . .	12
2.4.5	Slot 7 . . . . .	13
2.5	FID Slots . . . . .	14
2.5.1	Slot 0 . . . . .	14
2.5.2	Slot 1 . . . . .	15
2.5.3	Slot 2 . . . . .	16
<b>A</b>	<b>Summary</b>	<b>17</b>
A.1	Status . . . . .	17
A.2	Comments . . . . .	17

# 1 Front

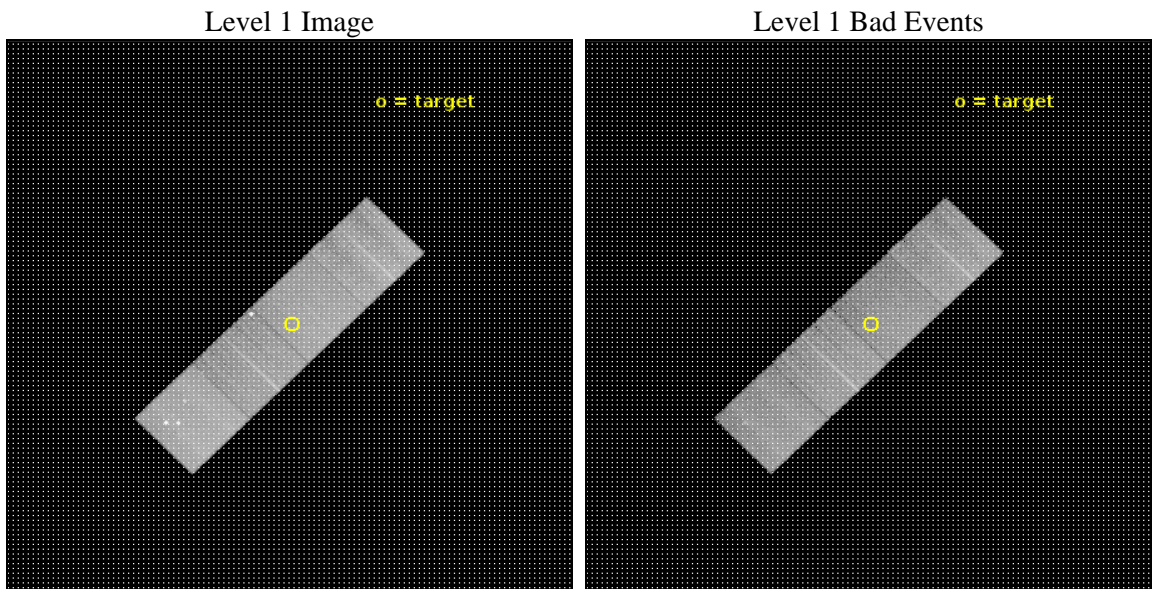
seq_num	201089	Sequence number
obs_id	18896	Observation id
title	X-rays from Young Low-Mass Stars: Inhospitable Habitable Zones?	Pr
observer	Joel Kastner	Principal investigator
object	J1203-3821	Source name
dtcycle	0	&#160
cycle	P	events from which exps? Prim/Second/Both
ra_targ	180.995833	Observer's specified target RA [deg]
dec_targ	-38.361111	Observer's specified target Dec [deg]
ra_nom	181.00203335523	Nominal RA [deg]
dec_nom	-38.360468050497	Nominal Dec [deg]
roll_nom	315.16044837007	Nominal Roll [deg]
revision	1	Processing version of data
ontime	15059.261921883	Sum of GTIs [s]
livetime	14862.501578406	Livetime [s]
ontime5	15059.220881939	Sum of GTIs [s]
ontime6	15052.897671461	Sum of GTIs [s]
ontime7	15059.261921883	Sum of GTIs [s]
ontime8	15052.856540799	Sum of GTIs [s]
l2events	161629	Number of level 2 events



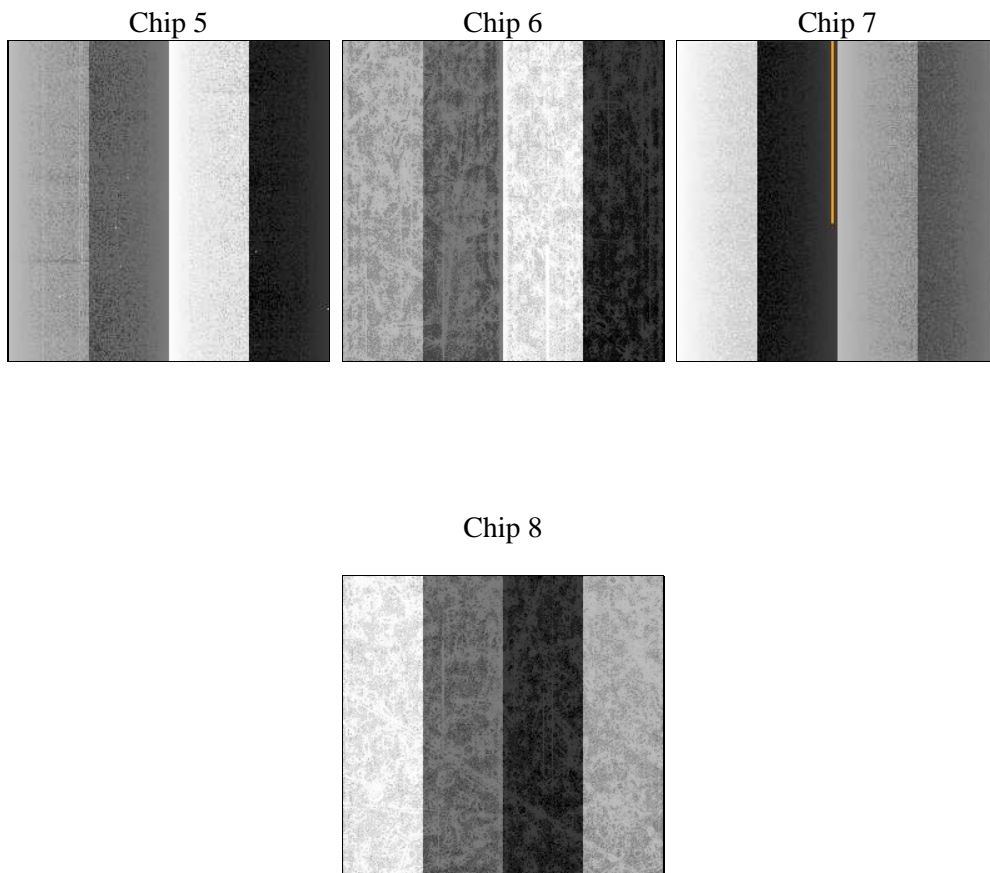
## 2 OBI

### 2.1 OBI

#### 2.1.1 Images



#### 2.1.2 Bias



### 2.1.3 Parameters

obi_num	0	Obi number	sched_exp_time	15000.000000	[s] Scheduled observation exposure time
ascdsver	10.5.4	Processing system revision	ontime	15059.261921883	Sum of GTIs [s]
caldsver	4.7.3	&#160	ontime5	15059.220881939	Sum of GTIs [s]
date	2017-04-18T03:09:49	Date and time of file creation	ontime6	15052.897671461	Sum of GTIs [s]
revision	1	Processing version of data	ontime7	15059.261921883	Sum of GTIs [s]
			ontime8	15052.856540799	Sum of GTIs [s]
			l1events	596731	Number of level 1 events

### 2.1.4 Events

	ccd 5	ccd 6	ccd 7	ccd 8
level 1 events	184445	122292	141285	148709
rejected events	92935	105090	81426	111503
rejected %	50%	85%	57%	74%

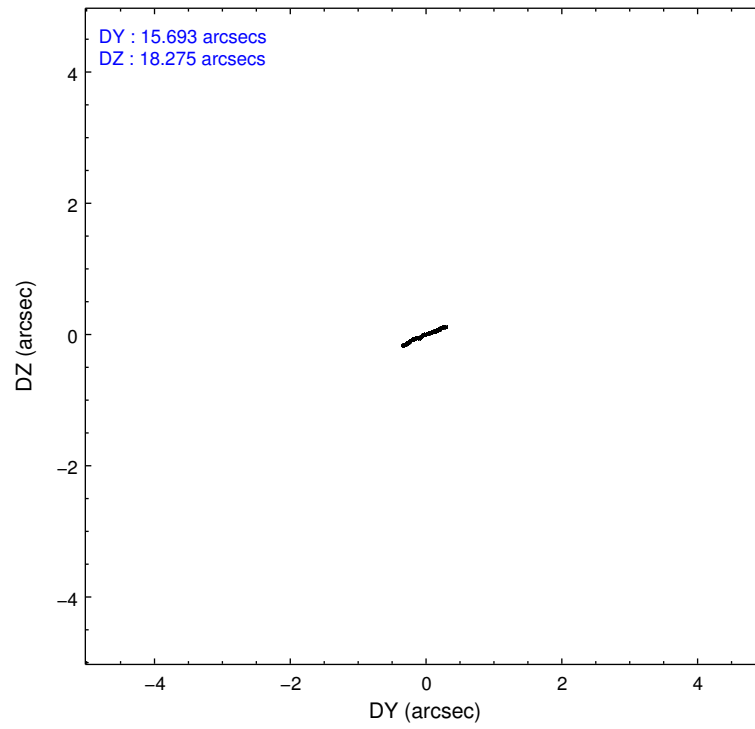
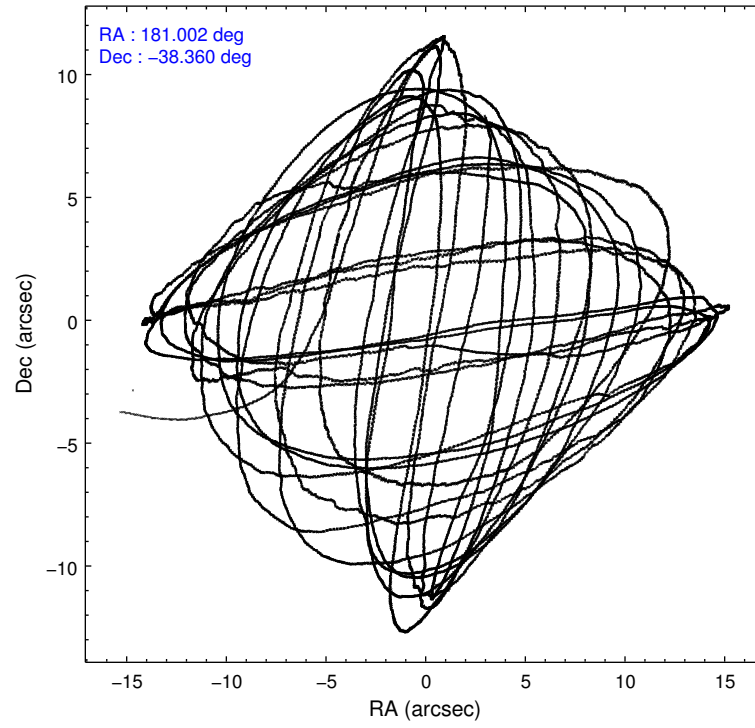
	ccd 5	ccd 6	ccd 7	ccd 8
grade 0 events	9960	4038	4611	10263
	5%	3%	3%	6%
grade 1 events	760	52	154	92
	0%	0%	0%	0%
grade 2 events	28704	7691	12913	9438
	15%	6%	9%	6%
grade 3 events	2480	1142	4281	3711
	1%	0%	3%	2%
grade 4 events	2420	1139	3996	3379
	1%	0%	2%	2%
grade 5 events	10988	4776	12832	7586
	5%	3%	9%	5%
grade 6 events	47989	3199	34083	10421
	26%	2%	24%	7%
grade 7 events	81144	100255	68415	103819
	43%	81%	48%	69%

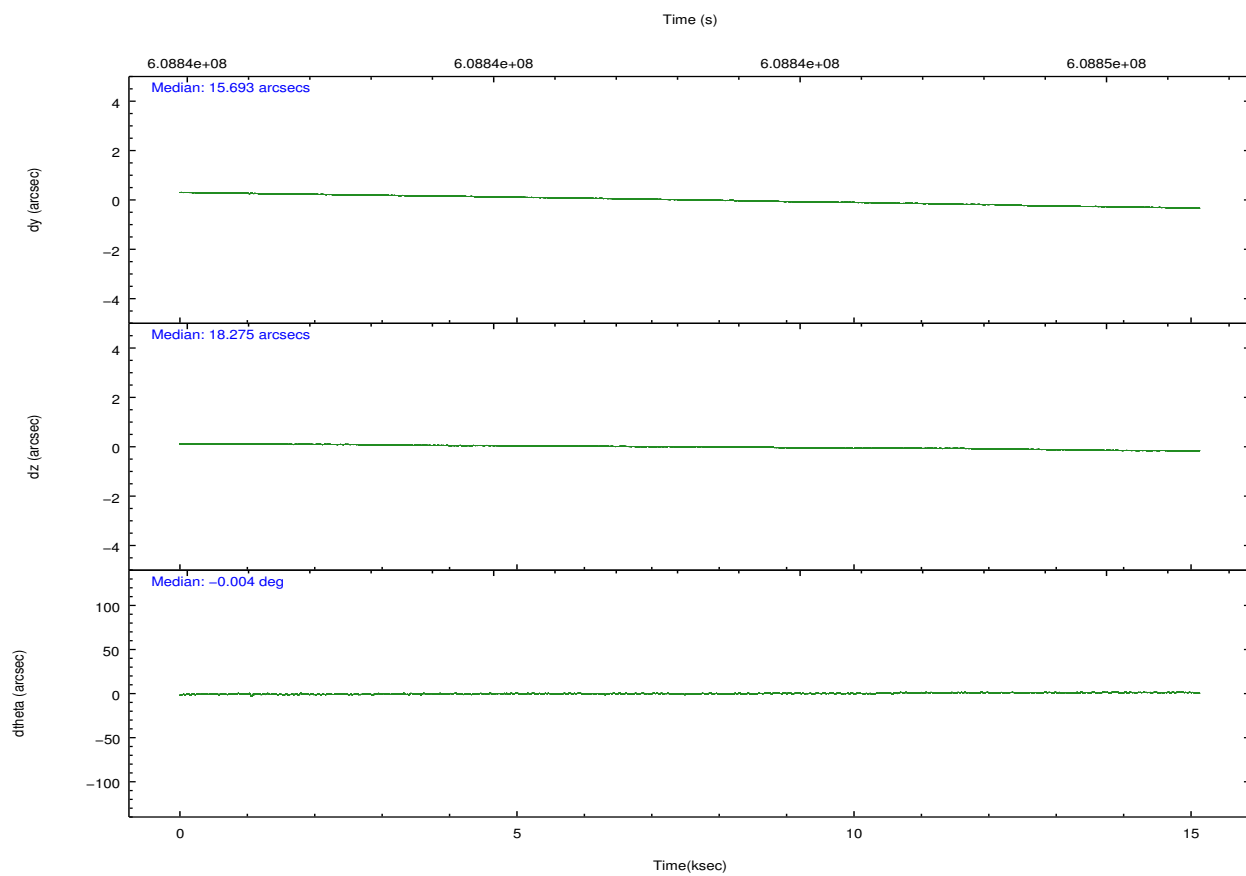
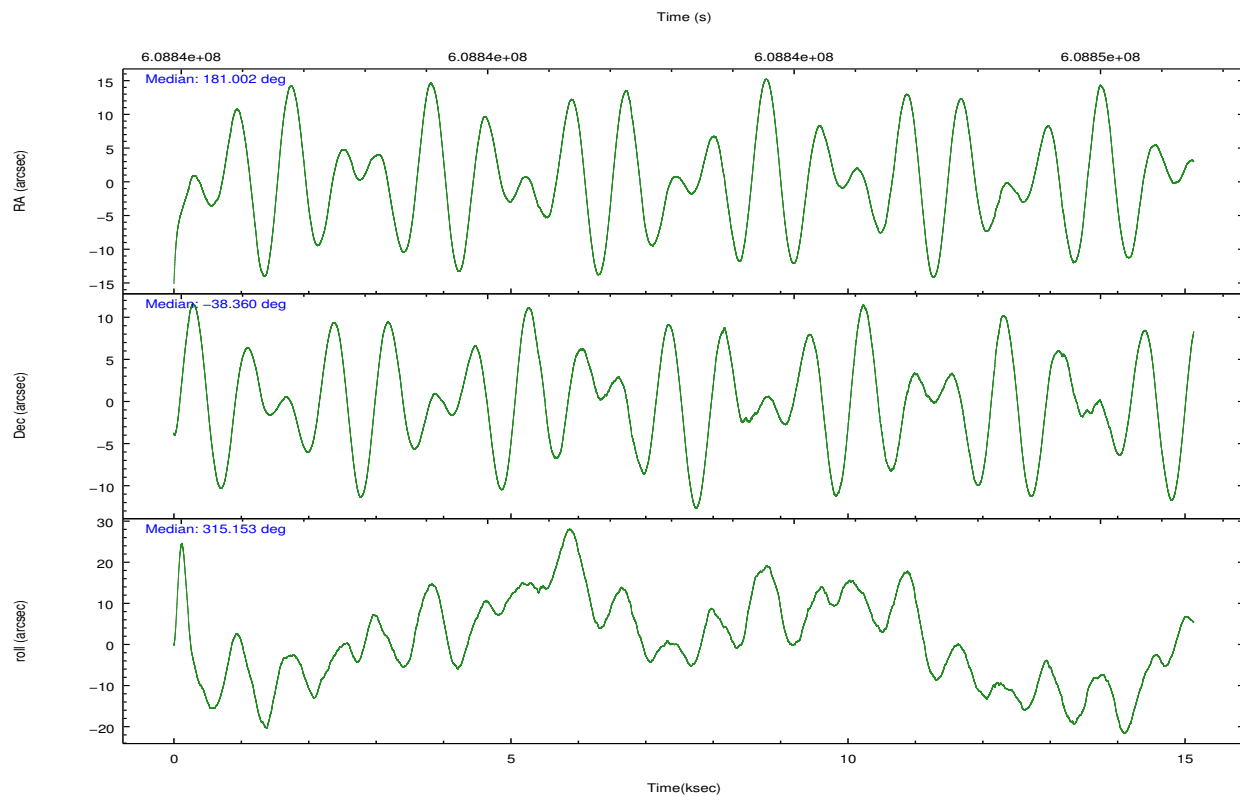
## 2.2 Compared Parameters

Parameter	Planned	Actual
Instrument	ACIS	ACIS
Detector	ACIS-5678	ACIS-5678
Grating	NONE	NONE
Data mode	VFAINT	VFAINT
Observation mode	POINTING	POINTING
[deg] Pointing RA	180.968090	181.0020333552328
[deg] Pointing Dec	-38.353788	-38.36046805049742
[deg] Pointing Roll	314.982784	315.1604483700708
[mm] SIM focus pos	-0.684267	-0.6828225247311905
[mm] SIM defocus	0	0.001444936568705701
[mm] SIM translation stage pos	-190.132523	-190.1425803651734
[mm] SIM translation stage offset	0	0.01005778216563158
[s] Observation start time (MET)	608835732.184000	608834155.89774
Observation start date	2017-04-17T17:01:03	2017-04-17T16:35:55
[s] Observation end time (MET)	608850732.184000	608851480.9612401
Observation end date	2017-04-17T21:11:03	2017-04-17T21:24:40
Read mode	TIMED	TIMED

Parameter	Planned	Actual
Obspar format version number	7	7
Obspar file type	PREDICTED	ACTUAL
Obspar update status	NONE	UPDATED
CCD I0 on	N	N
CCD I1 on	N	N
CCD I2 on	O1	N
CCD I3 on	O2	N
CCD S0 on	N	N
CCD S1 on	Y	Y
CCD S2 on	Y	Y
CCD S3 on	Y	Y
CCD S4 on	Y	Y
CCD S5 on	N	N
Number of optional ACIS chips dropped	2	2
On-chip summing requested	N	N
Subarray requested	NONE	NONE
Alternating exposures requested	N	N
[s] Primary exposure time	0.000000	3.1

## 2.3 Aspect



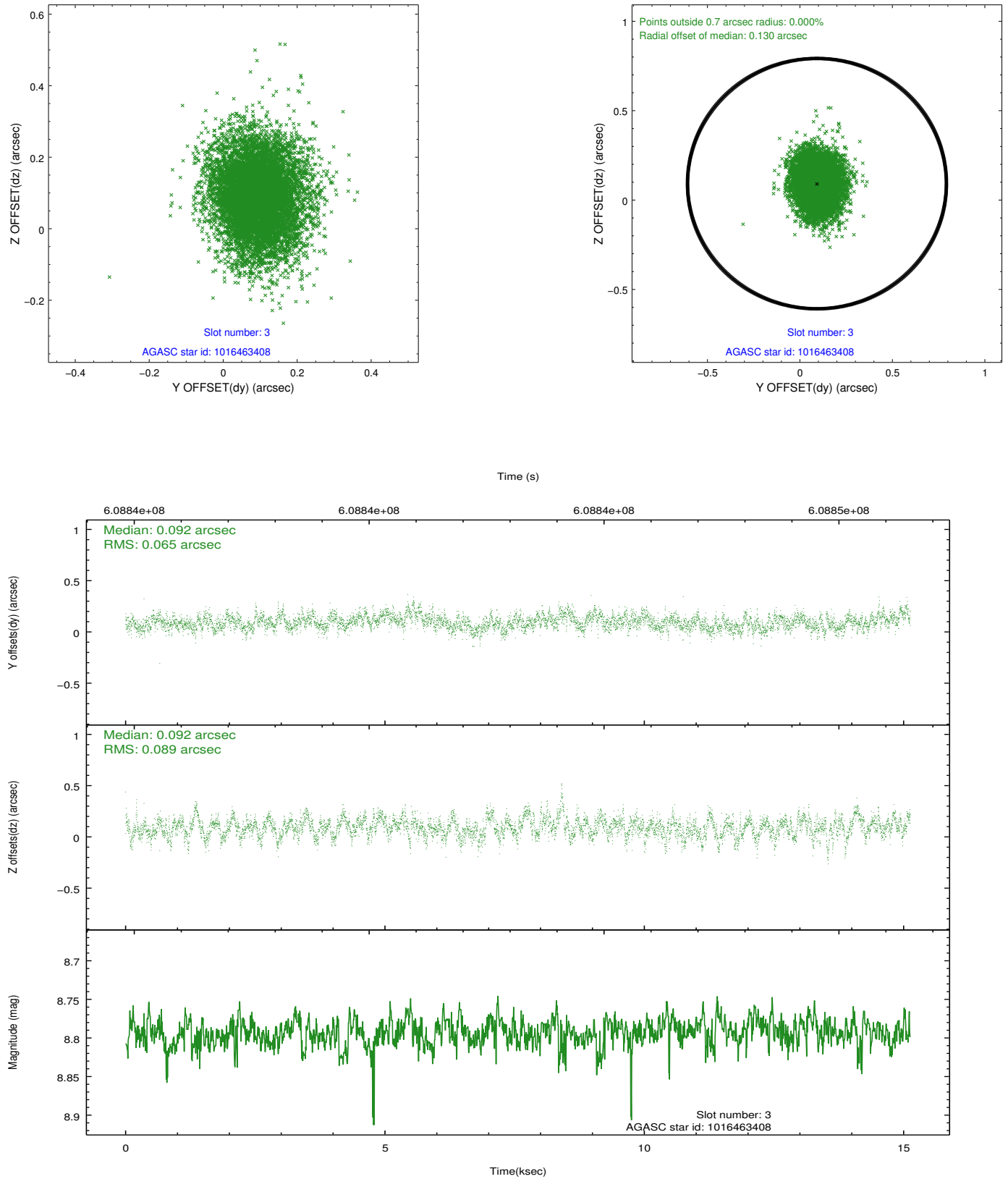


### Slot Statistics

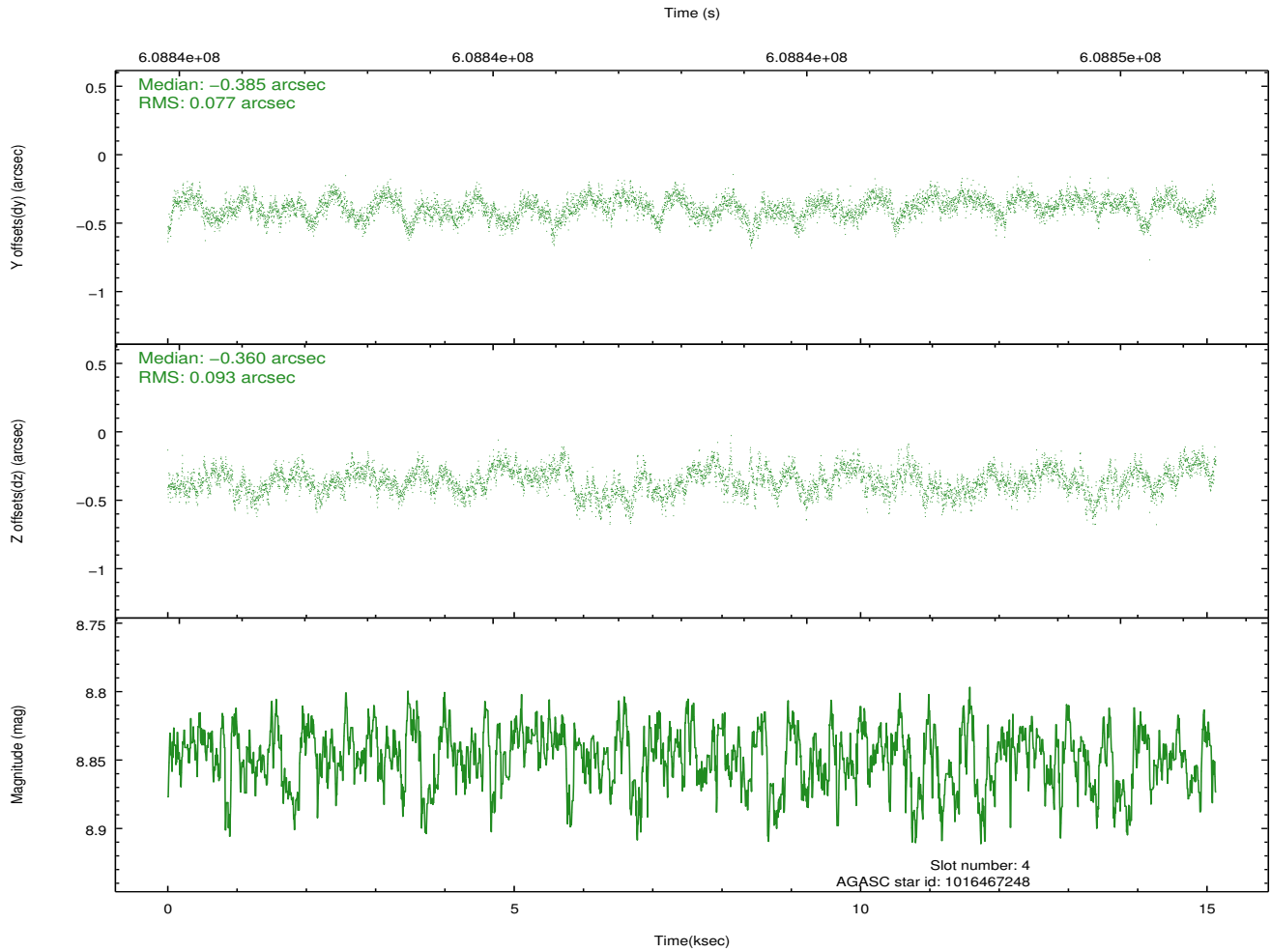
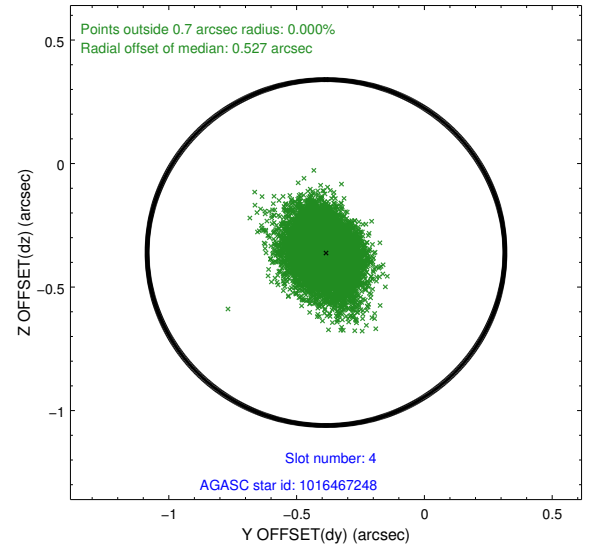
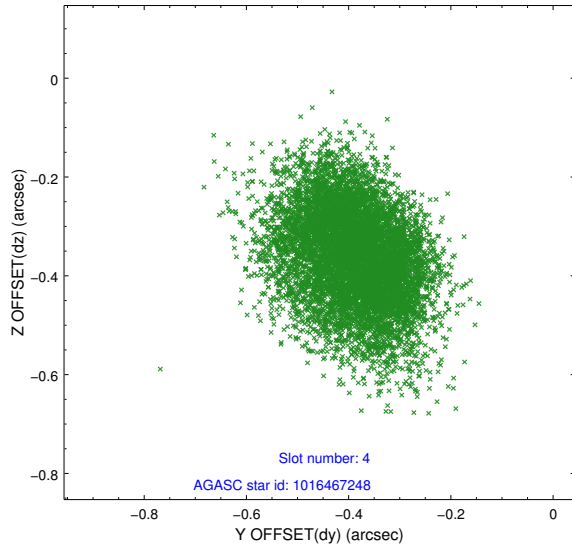
slot	status	used	id	mag	n_pts	med_dy	med_dz	dr1	dr2	ra	dec	mean_y	mean_z
0	FID		ACIS-S-2	7.14	3690	-0.204	-0.140	0.010	0.016	0.000000	0.000000	-768.88	-1739.82
1	FID		ACIS-S-4	7.24	3690	0.497	0.136	0.006	0.011	0.000000	0.000000	2144.96	168.63
2	FID		ACIS-S-5	7.23	3689	-0.325	0.013	0.011	0.020	0.000000	0.000000	-1821.46	162.52
3	GUIDE	used	1016463408	8.79	7370	0.092	0.092	0.115	0.192	180.778996	-38.620343	303.57	-1054.65
4	GUIDE	used	1016467248	8.85	7370	-0.385	-0.360	0.129	0.207	181.137094	-38.305070	213.81	461.10
5	GUIDE	used	1016473464	8.97	7377	0.258	0.263	0.195	0.290	180.236011	-38.483644	-1120.94	-1795.07
6	GUIDE	used	1016469744	9.29	7365	-0.326	-0.399	0.175	0.286	181.727916	-38.106438	897.19	2143.76
7	GUIDE	used	1016470608	9.19	7375	0.371	0.402	0.130	0.217	180.276540	-38.003011	-2274.28	-499.74

## 2.4 Star Slots

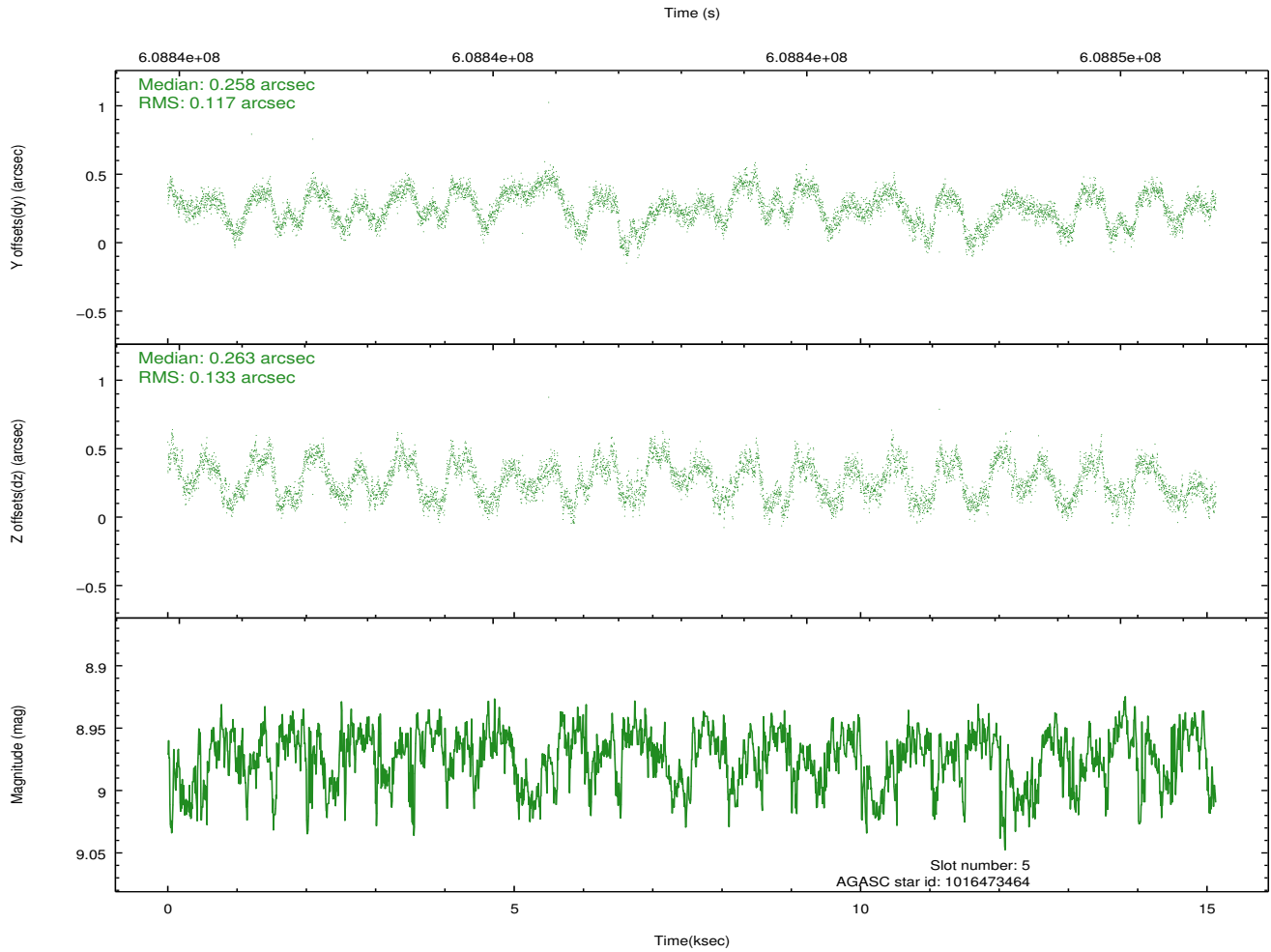
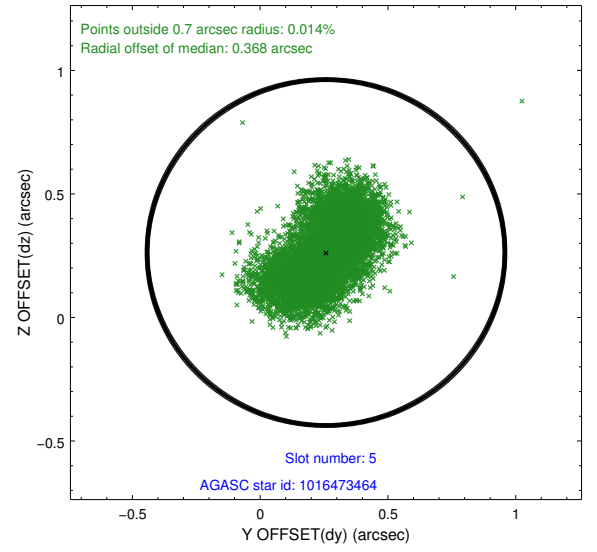
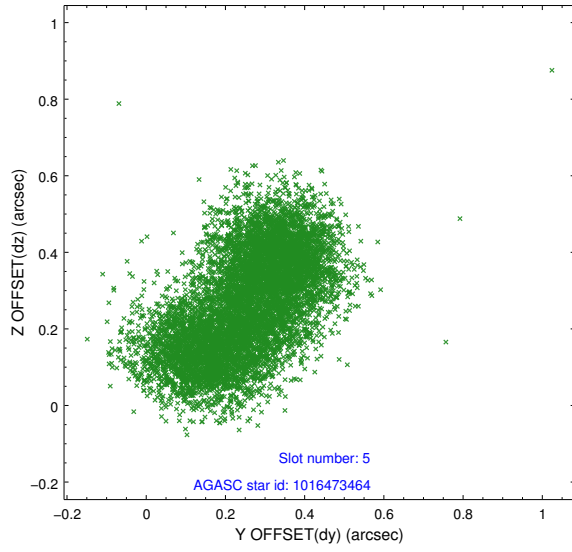
### 2.4.1 Slot 3



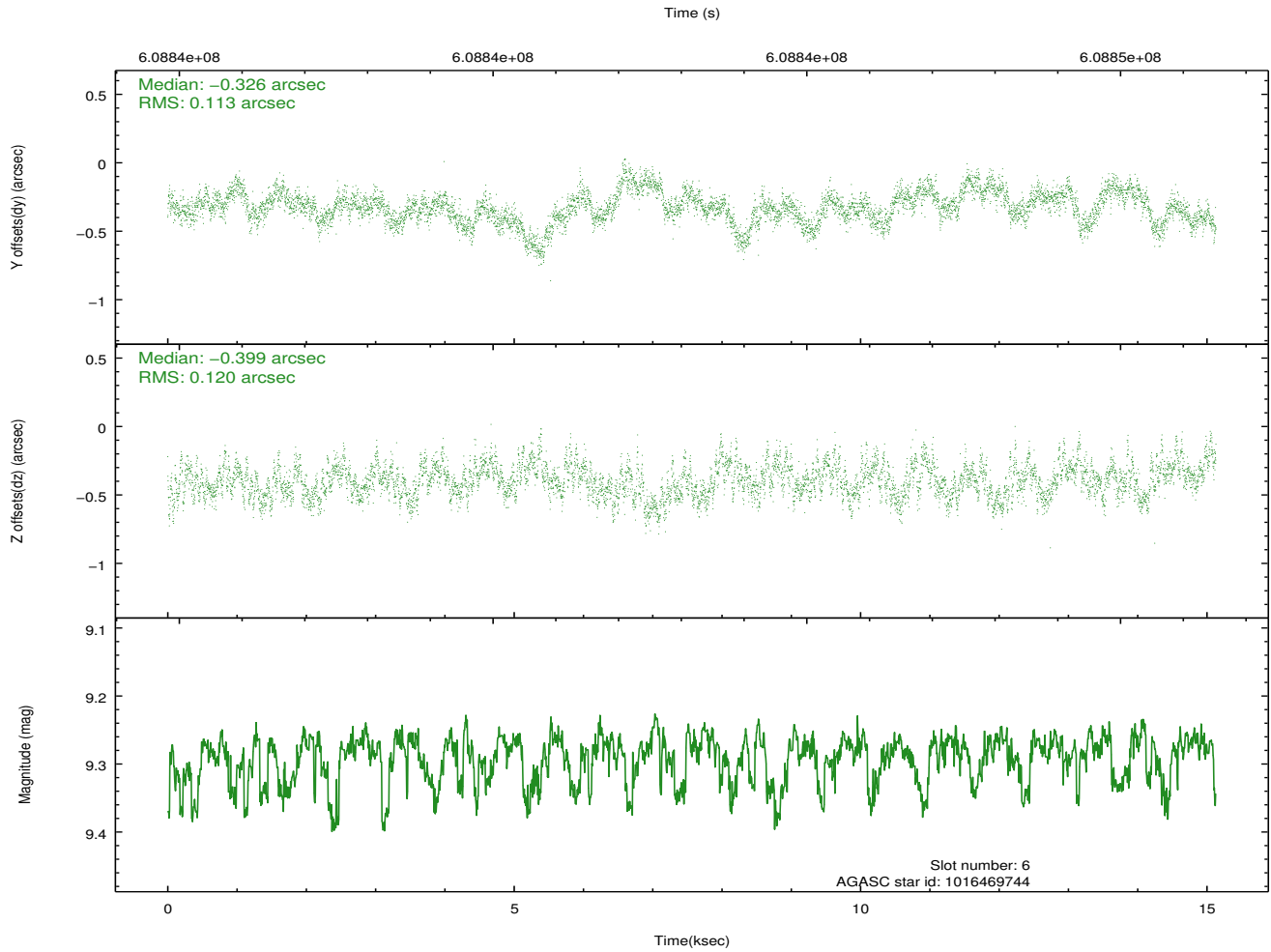
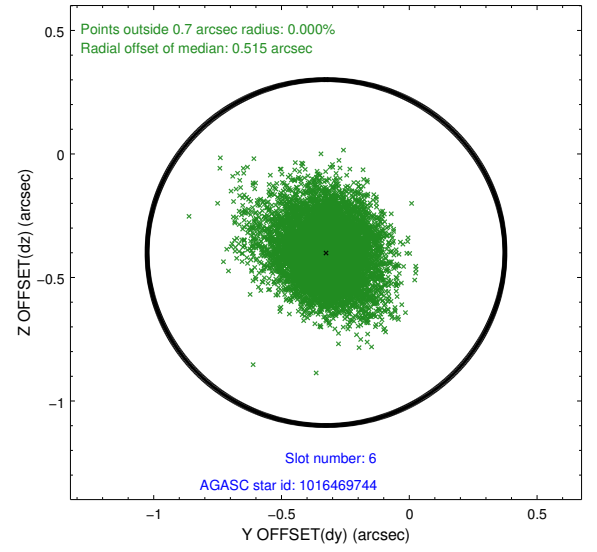
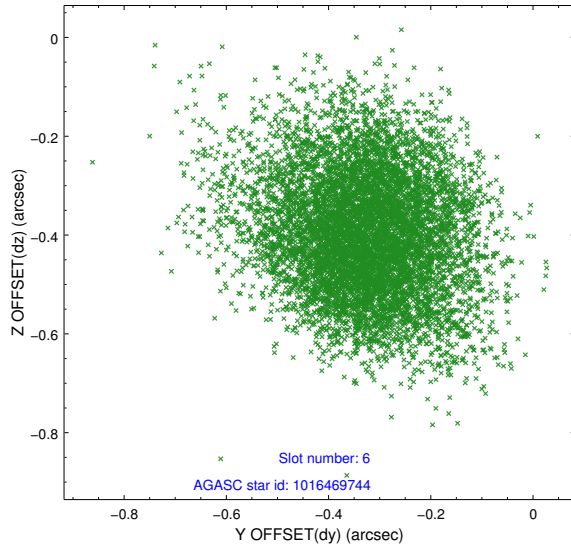
## 2.4.2 Slot 4



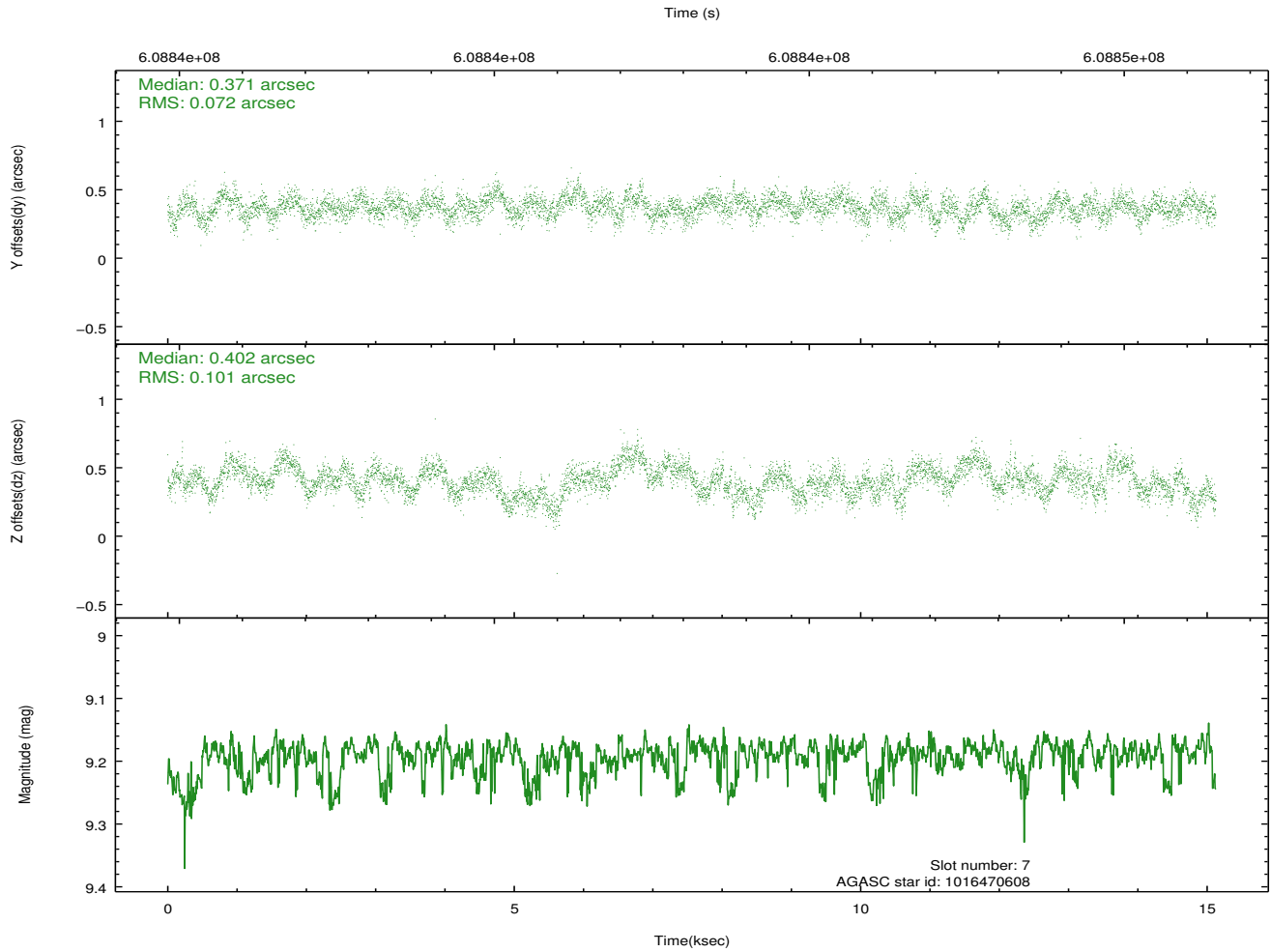
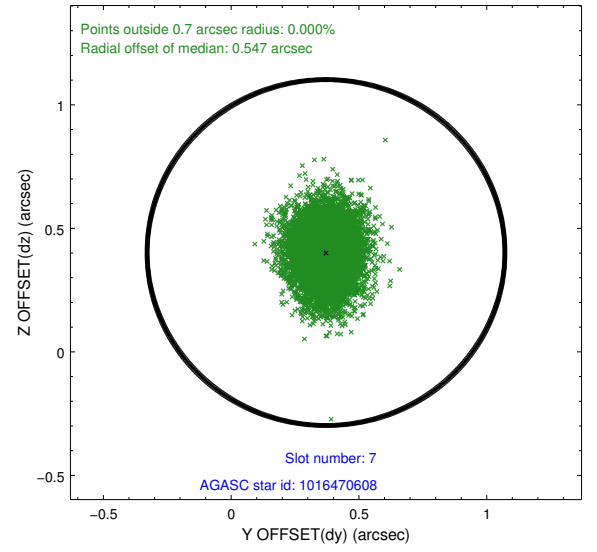
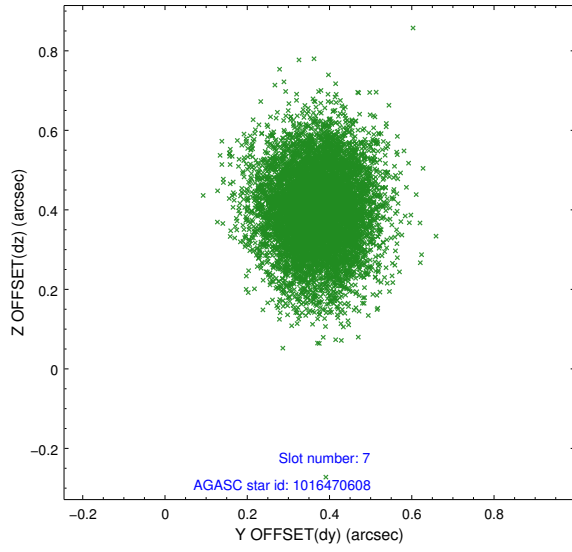
### 2.4.3 Slot 5



## 2.4.4 Slot 6

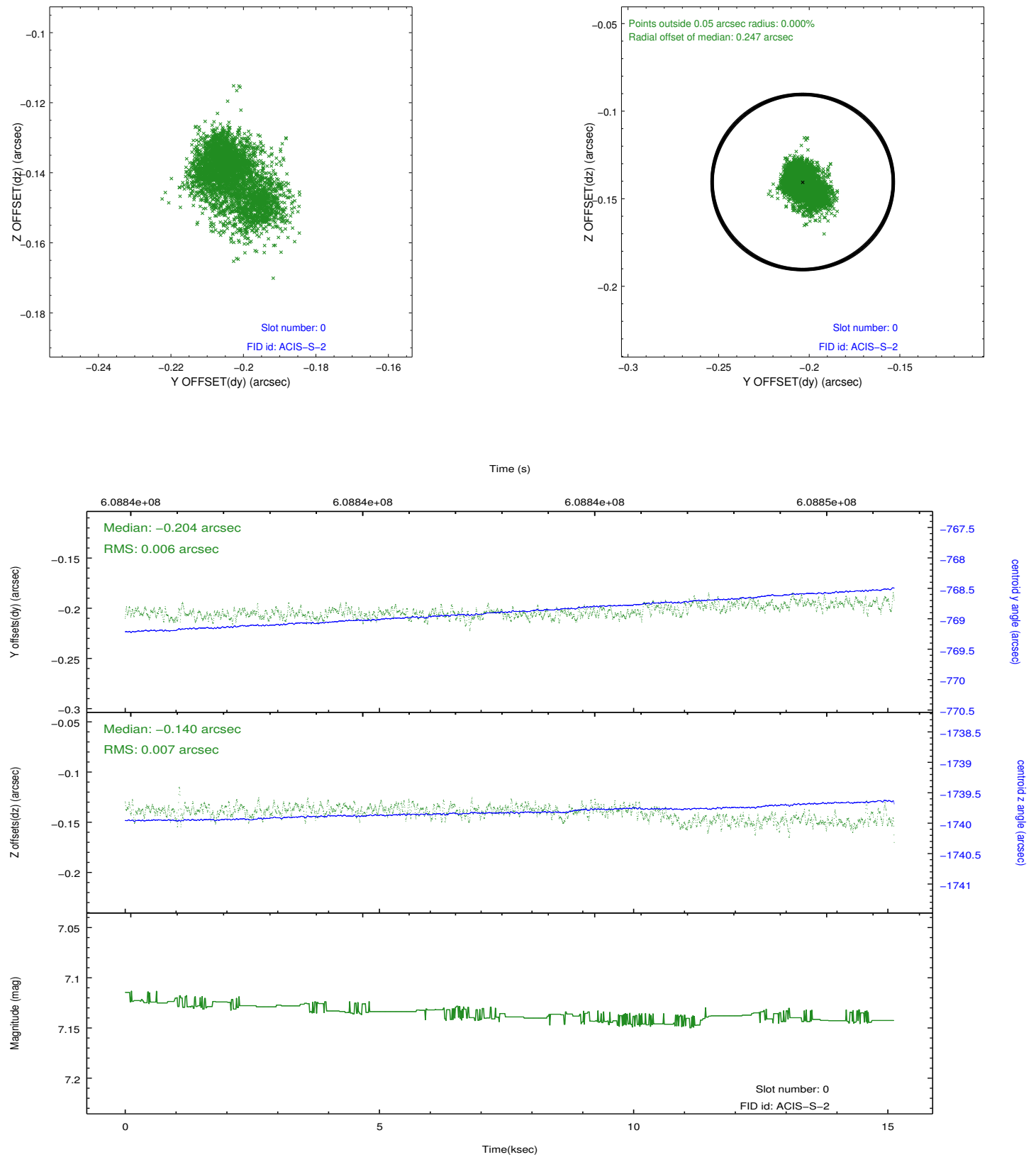


## 2.4.5 Slot 7

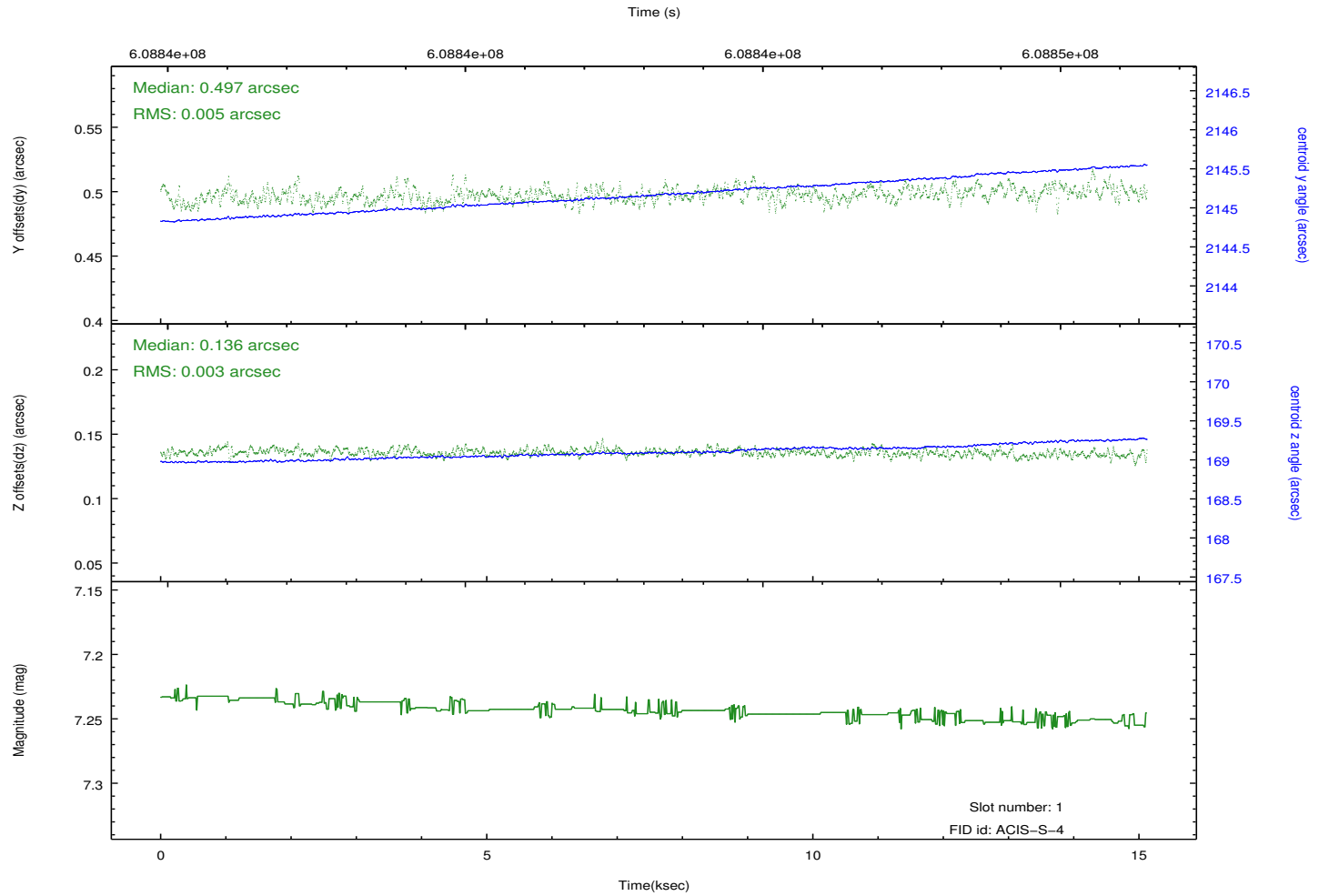
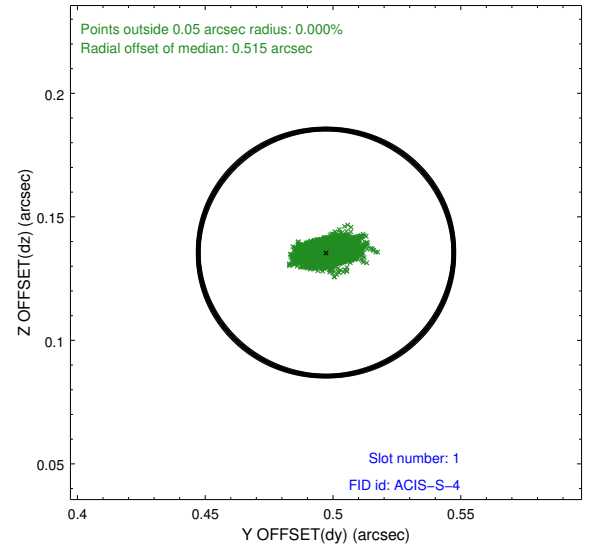
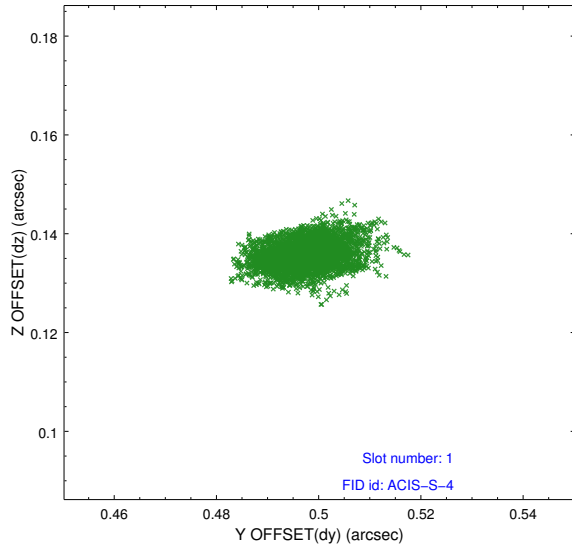


## 2.5 FID Slots

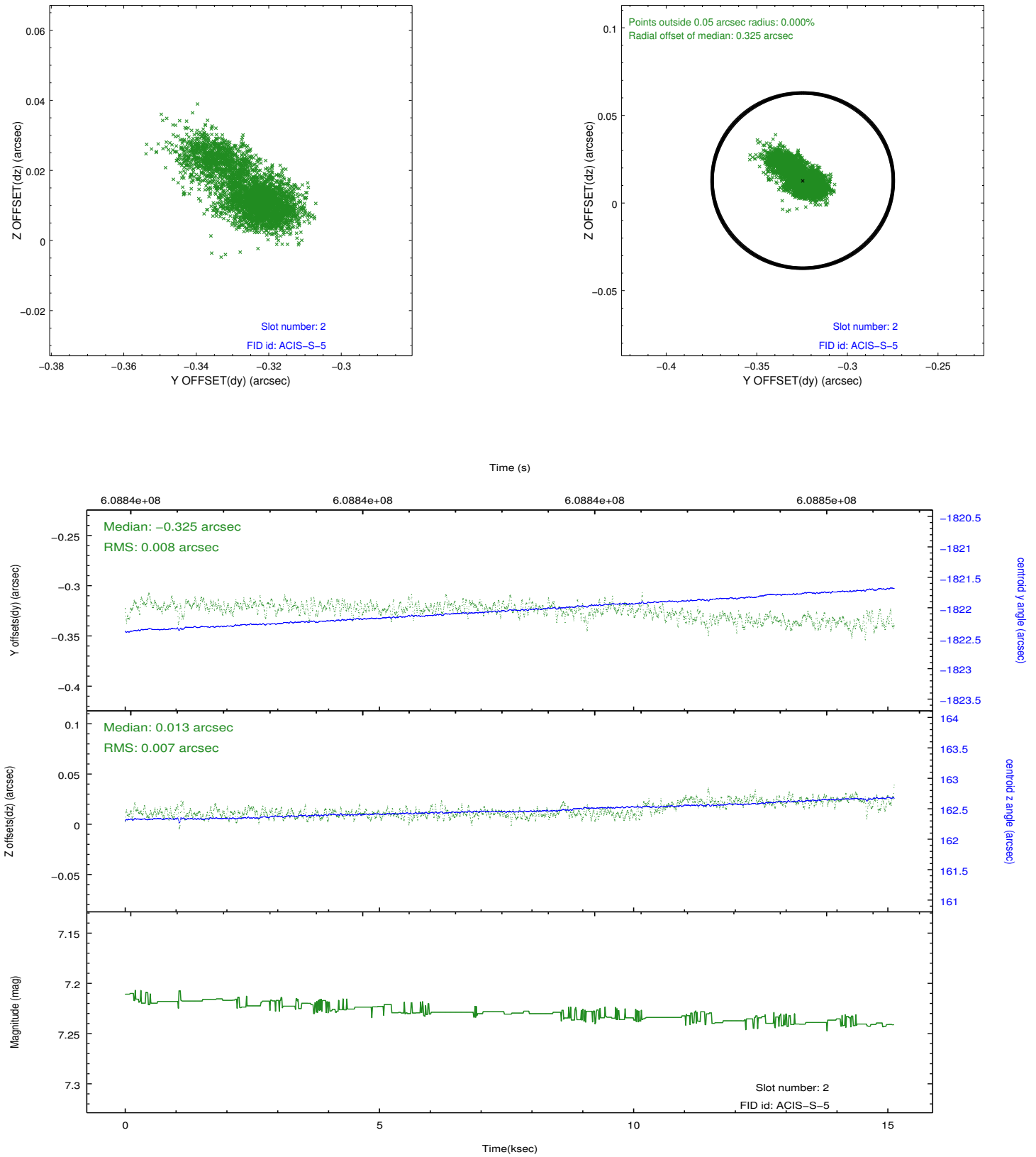
### 2.5.1 Slot 0



## 2.5.2 Slot 1



### 2.5.3 Slot 2



## A Summary

### A.1 Status

V&V Scientist	Jen Lauer
V&V Date (YYYY-MM-DD)	2017.04.18
V&V Edition	1
V&V Disposition and Status	OK
V&V Charge Time	15.059261921883

### A.2 Comments

Optional chips I2 and I3 not included.