

# V&V Reference Report

## L2 ASCDS Version : 10.4.3.1

Observation 18079 - L2 Version 1  
Chandra X-Ray Center

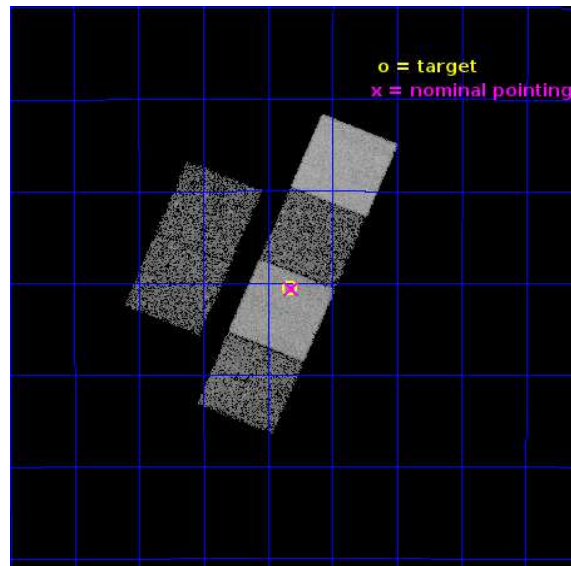
L2 Processing Date : May 22 2016

## Contents

<b>1</b>	<b>Front</b>	<b>2</b>
<b>2</b>	<b>OBI</b>	<b>3</b>
2.1	OBI . . . . .	3
2.1.1	Images . . . . .	3
2.1.2	Bias . . . . .	3
2.1.3	Parameters . . . . .	4
2.1.4	Events . . . . .	4
2.2	Compared Parameters . . . . .	5
2.3	Aspect . . . . .	6
2.4	Star Slots . . . . .	9
2.4.1	Slot 3 . . . . .	9
2.4.2	Slot 4 . . . . .	10
2.4.3	Slot 5 . . . . .	11
2.4.4	Slot 6 . . . . .	12
2.4.5	Slot 7 . . . . .	13
2.5	FID Slots . . . . .	14
2.5.1	Slot 0 . . . . .	14
2.5.2	Slot 1 . . . . .	15
2.5.3	Slot 2 . . . . .	16
<b>A</b>	<b>Summary</b>	<b>17</b>
A.1	Status . . . . .	17
A.2	Comments . . . . .	17

# 1 Front

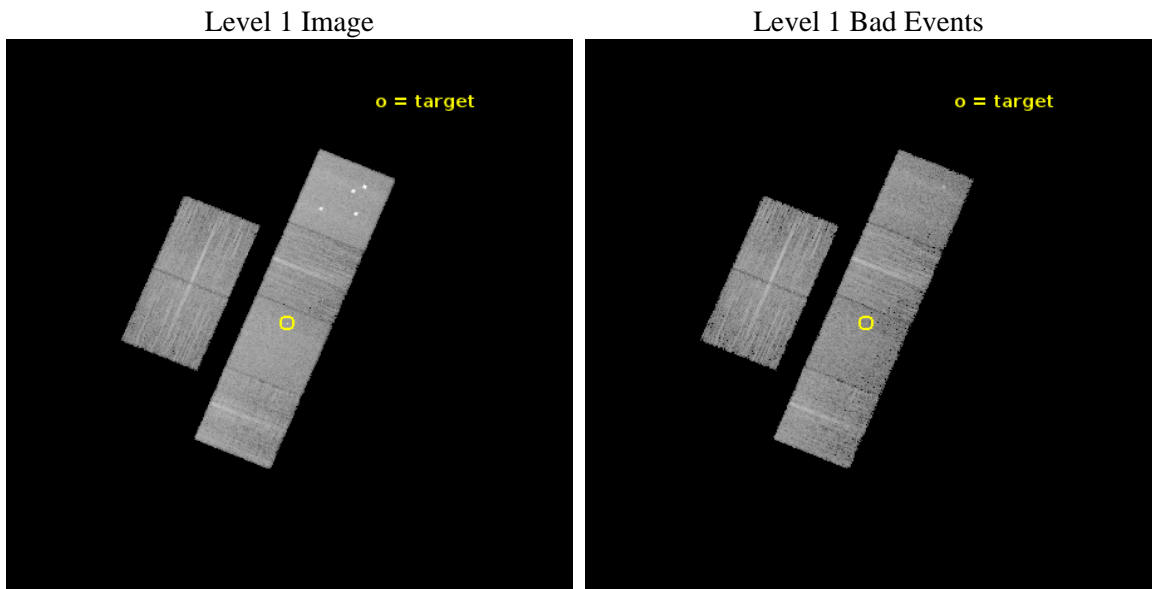
seq_num	901193	Sequence number
obs_id	18079	Observation id
title	Compton-Thick AGN: The Hunt is on	Proposal title
observer	Marco Ajello	Principal investigator
object	ESO 533-50	Source name
dtcycle	0	&#160
cycle	P	events from which exps? Prim/Second/Both
ra_targ	338.7075	Observer's specified target RA [deg]
dec_targ	-25.676944	Observer's specified target Dec [deg]
ra_nom	338.70470112366	Nominal RA [deg]
dec_nom	-25.67715612495	Nominal Dec [deg]
roll_nom	112.56870061748	Nominal Roll [deg]
revision	1	Processing version of data
ontime	9932.8001480103	Sum of GTIs [s]
livetime	9807.0250517219	Livetime [s]
ontime2	9932.8001480103	Sum of GTIs [s]
ontime3	9932.8001480103	Sum of GTIs [s]
ontime5	9932.8001480103	Sum of GTIs [s]
ontime6	9932.8001480103	Sum of GTIs [s]
ontime7	9932.8001480103	Sum of GTIs [s]
ontime8	9932.8001480103	Sum of GTIs [s]
l2events	101186	Number of level 2 events



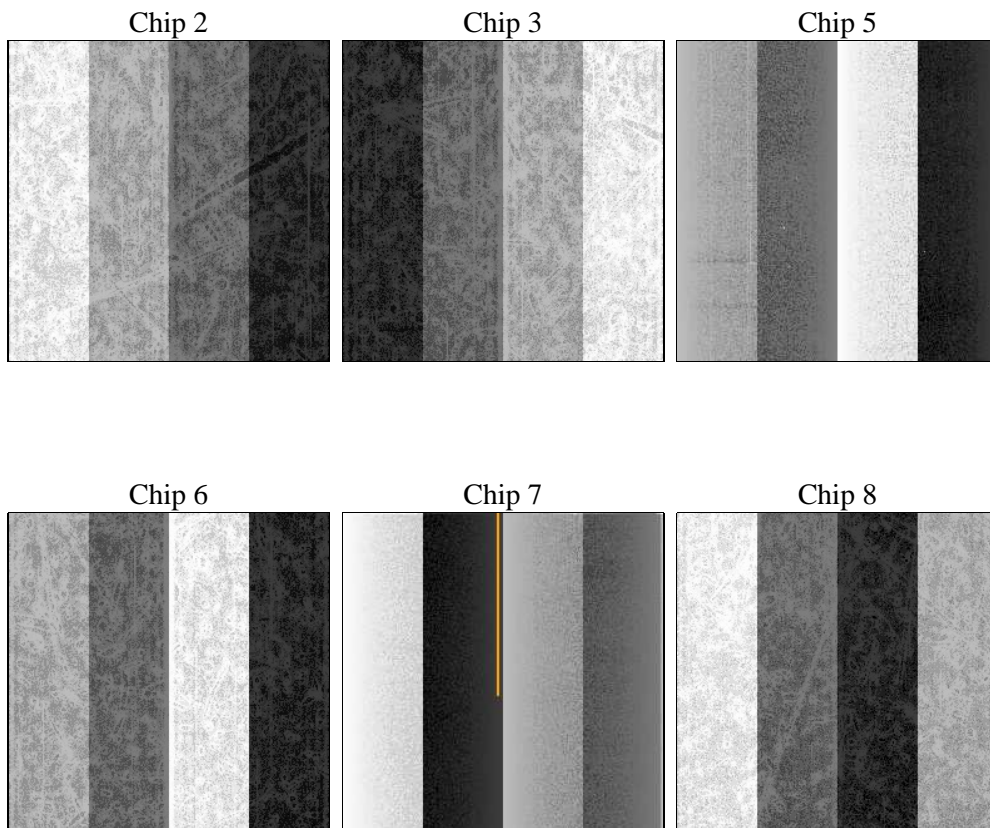
## 2 OBI

### 2.1 OBI

#### 2.1.1 Images



#### 2.1.2 Bias



### 2.1.3 Parameters

obi_num	0	Obi number	sched_exp_time	10000.000000	[s] Scheduled observation exposure time
ascdsver	10.4.3.1	Processing system revision	ontime	9932.8001480103	Sum of GTIs [s]
caldsver	4.7.1	&#160	ontime2	9932.8001480103	Sum of GTIs [s]
date	2016-05-22T15:23:35	Date and time of file creation	ontime3	9932.8001480103	Sum of GTIs [s]
revision	1	Processing version of data	ontime5	9932.8001480103	Sum of GTIs [s]
			ontime6	9932.8001480103	Sum of GTIs [s]
			ontime7	9932.8001480103	Sum of GTIs [s]
			ontime8	9932.8001480103	Sum of GTIs [s]
			l1events	464674	Number of level 1 events

### 2.1.4 Events

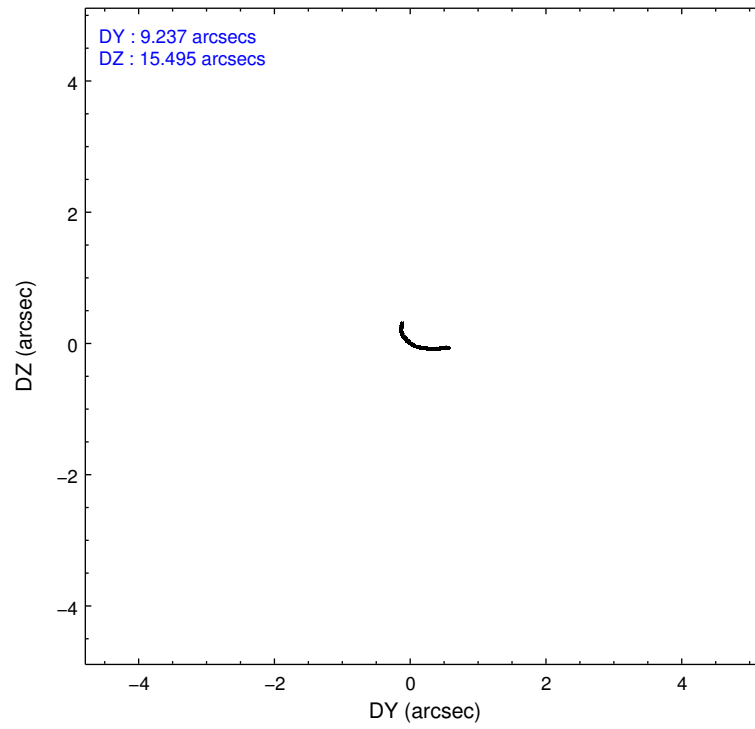
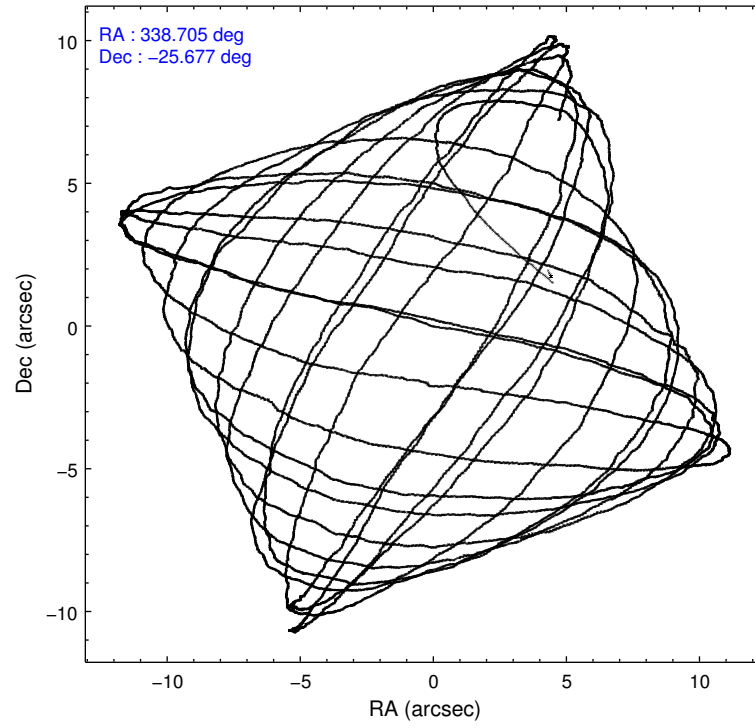
	ccd 2	ccd 3	ccd 5	ccd 6	ccd 7	ccd 8		ccd 2	ccd 3	ccd 5	ccd 6	ccd 7	ccd 8
level 1 events	67360	62357	109418	67728	79838	77973	grade 0 events	2279	2105	11304	2285	2713	5382
rejected events	60912	56281	52179	60572	46120	58894		3%	3%	10%	3%	3%	6%
rejected %	90%	90%	47%	89%	57%	75%	grade 1 events	31	38	436	22	105	52
								0%	0%	0%	0%	0%	0%
							grade 2 events	1602	1283	16866	1750	7210	4683
								2%	2%	15%	2%	9%	6%
							grade 3 events	643	633	1378	693	2458	1973
								0%	1%	1%	1%	3%	2%
							grade 4 events	638	685	1350	629	2455	1910
								0%	1%	1%	0%	3%	2%
							grade 5 events	2389	2891	6039	2807	7489	4118
								3%	4%	5%	4%	9%	5%
							grade 6 events	1292	1372	26384	1807	18903	5132
								1%	2%	24%	2%	23%	6%
							grade 7 events	58486	53350	45661	57735	38505	54723
								86%	85%	41%	85%	48%	70%

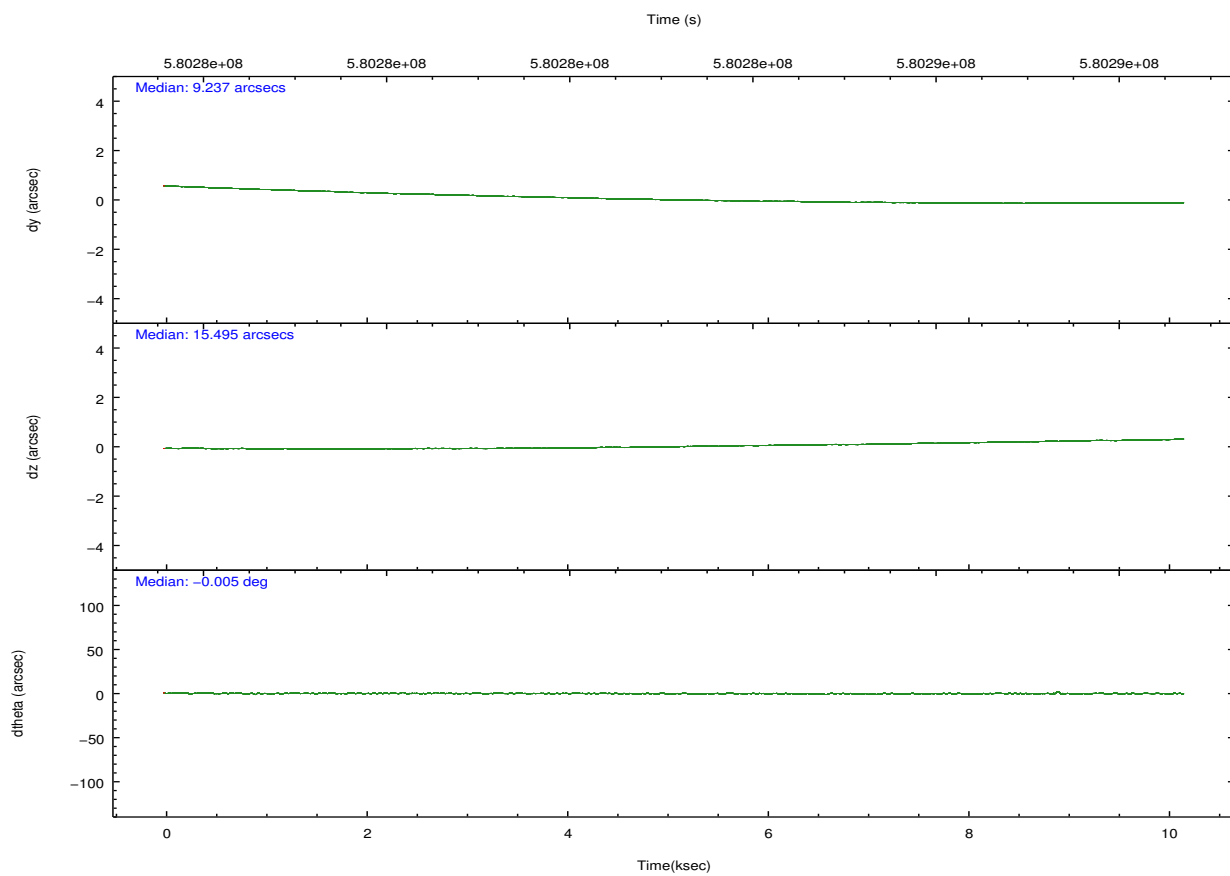
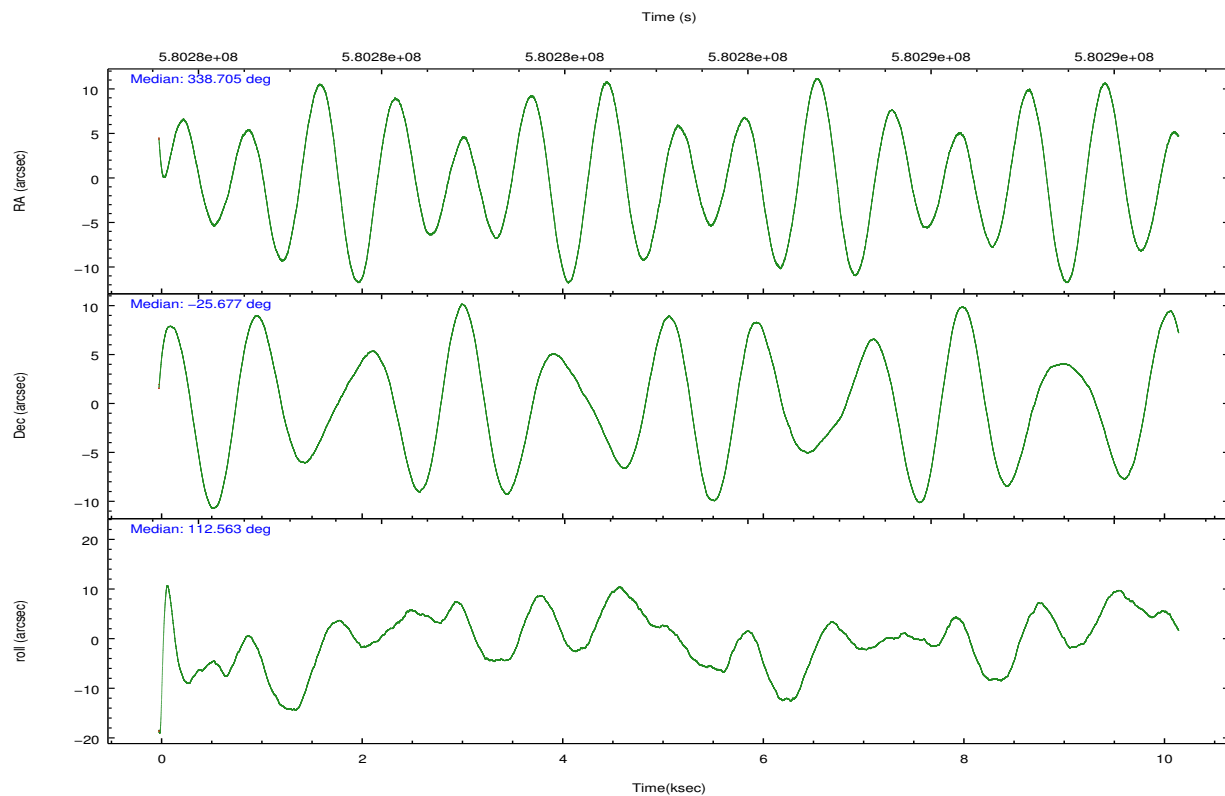


## 2.2 Compared Parameters

Parameter	Planned	Actual	Parameter	Planned	Actual
Instrument	ACIS	ACIS	Obspar format version number	7	7
Detector	ACIS-235678	ACIS-235678	Obspar file type	PREDICTED	ACTUAL
Grating	NONE	NONE	Obspar update status	NONE	UPDATED
Data mode	FAINT	FAINT	CCD I0 on	N	N
Observation mode	POINTING	POINTING	CCD I1 on	N	N
[deg] Pointing RA	338.729098	338.7047011236629	CCD I2 on	O4	Y
[deg] Pointing Dec	-25.693578	-25.67715612494999	CCD I3 on	O3	Y
[deg] Pointing Roll	112.422683	112.5687006174846	CCD S0 on	N	N
[mm] SIM focus pos	-0.684267	-0.6828225247311905	CCD S1 on	O2	Y
[mm] SIM defocus	0	0.001444936568705701	CCD S2 on	Y	Y
[mm] SIM translation stage pos	-190.132523	-190.1425803651734	CCD S3 on	Y	Y
[mm] SIM translation stage offset	0	0.01005778216563158	CCD S4 on	O1	Y
[s] Observation start time (MET)	580278223.184000	580277212.47562	CCD S5 on	N	N
Observation start date	2016-05-22T04:22:35	2016-05-22T04:06:52	Number of optional ACIS chips dropped	0	0
[s] Observation end time (MET)	580288223.184000	580289064.5513	On-chip summing requested	N	N
Observation end date	2016-05-22T07:09:15	2016-05-22T07:24:24	Subarray requested	NONE	NONE
Read mode	TIMED	TIMED	Alternating exposures requested	N	N
			[s] Primary exposure time	0.000000	3.2

## 2.3 Aspect



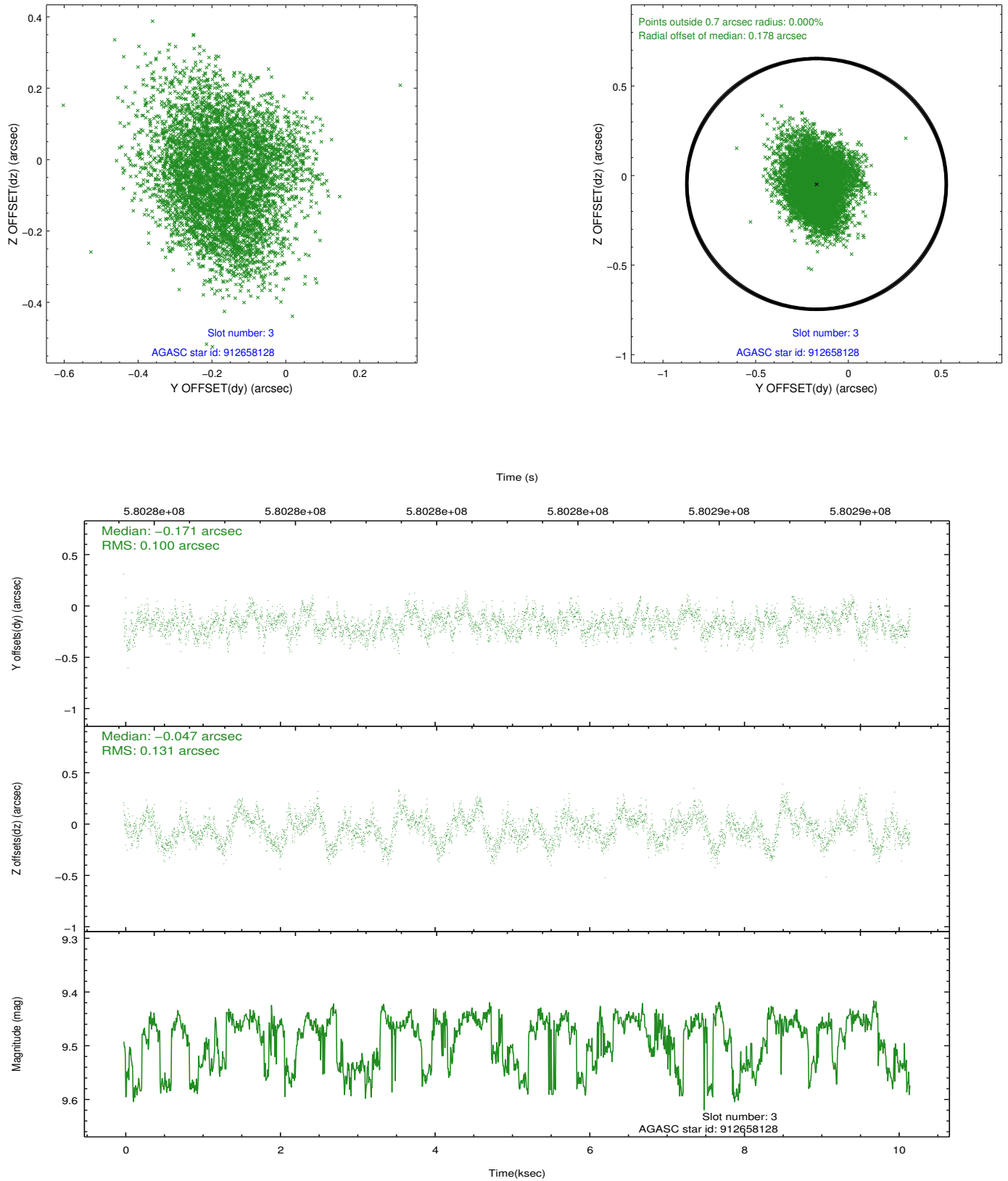


### Slot Statistics

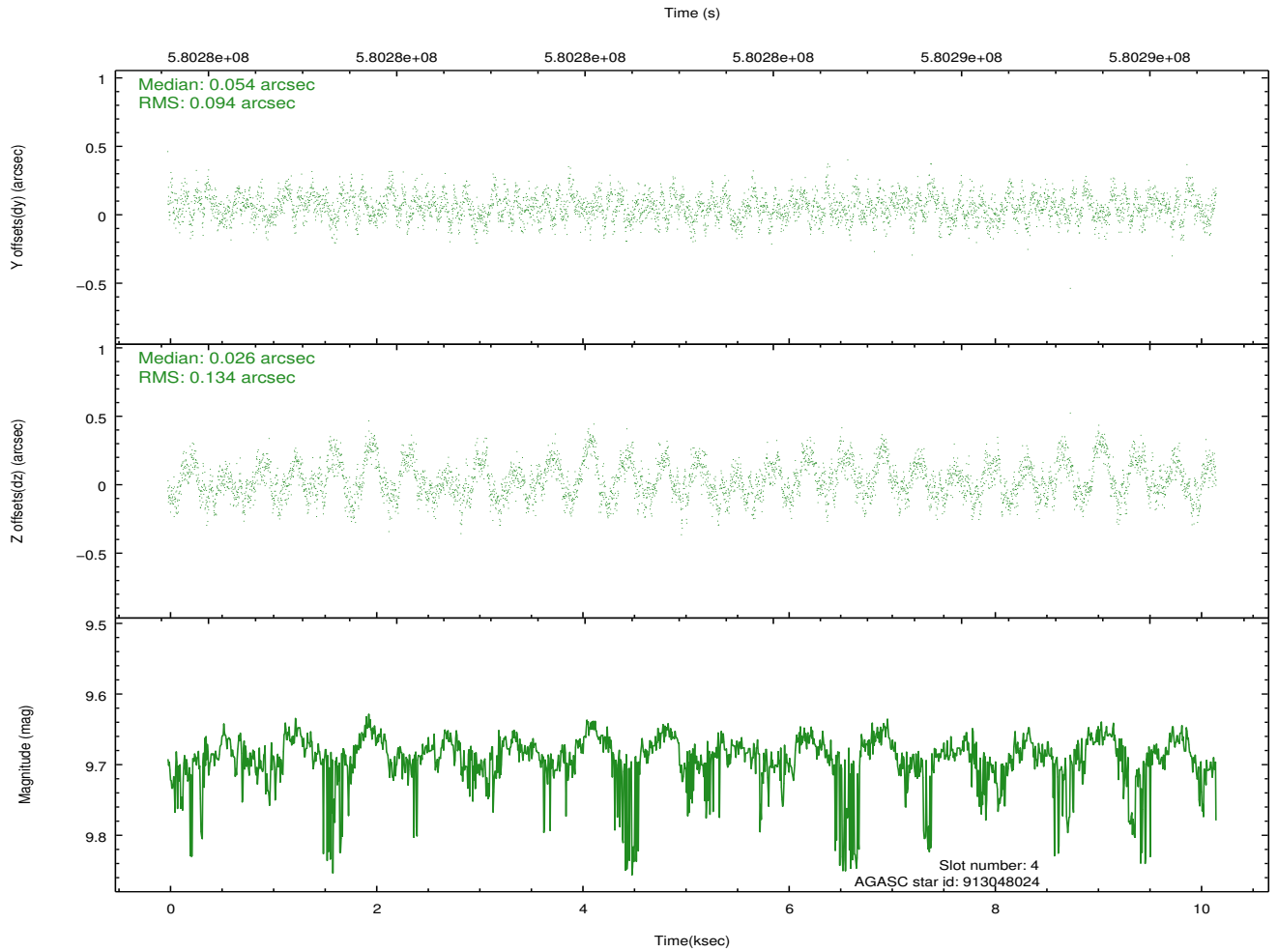
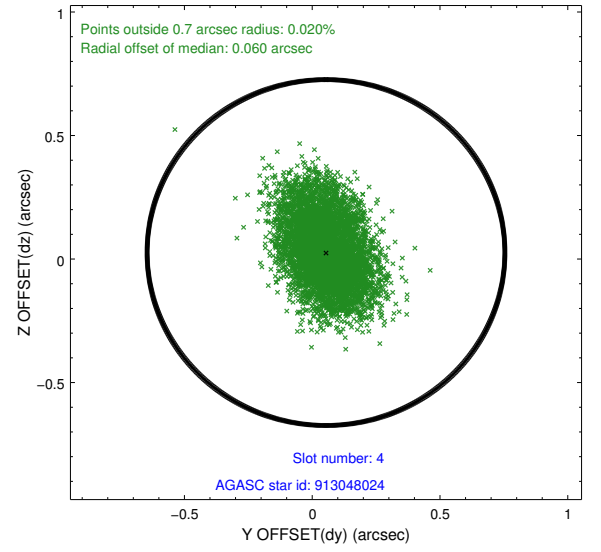
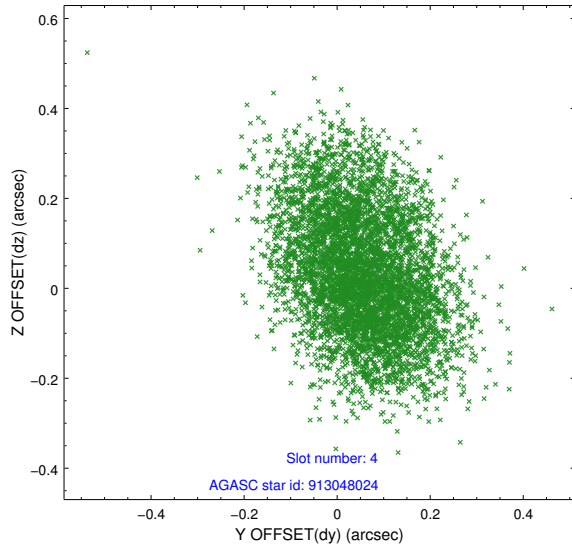
slot	status	used	id	mag	n_pts	med_dy	med_dz	dr1	dr2	ra	dec	mean_y	mean_z
0	FID		ACIS-S-2	7.14	2481	-0.151	-0.047	0.011	0.017	0.000000	0.000000	-762.25	-1736.94
1	FID		ACIS-S-4	7.24	2481	0.375	0.086	0.016	0.024	0.000000	0.000000	2151.29	171.19
2	FID		ACIS-S-5	7.25	2480	-0.256	-0.030	0.010	0.016	0.000000	0.000000	-1814.56	165.27
3	GUIDE	used	912658128	9.48	4952	-0.171	-0.047	0.177	0.279	338.987075	-24.957526	2127.82	-1788.20
4	GUIDE	used	913048024	9.69	4955	0.054	0.026	0.173	0.283	339.057586	-25.117461	1508.51	-1780.14
5	GUIDE	used	913048328	9.71	4954	-0.021	0.018	0.190	0.308	339.031919	-25.207725	1240.29	-1578.27
6	GUIDE	used	913049320	9.08	4959	-0.217	-0.495	0.118	0.185	338.191374	-25.848811	144.18	1824.32
7	GUIDE	used	913050576	9.72	4949	0.347	0.498	0.244	0.368	339.398805	-25.857774	-1378.20	-1777.14

## 2.4 Star Slots

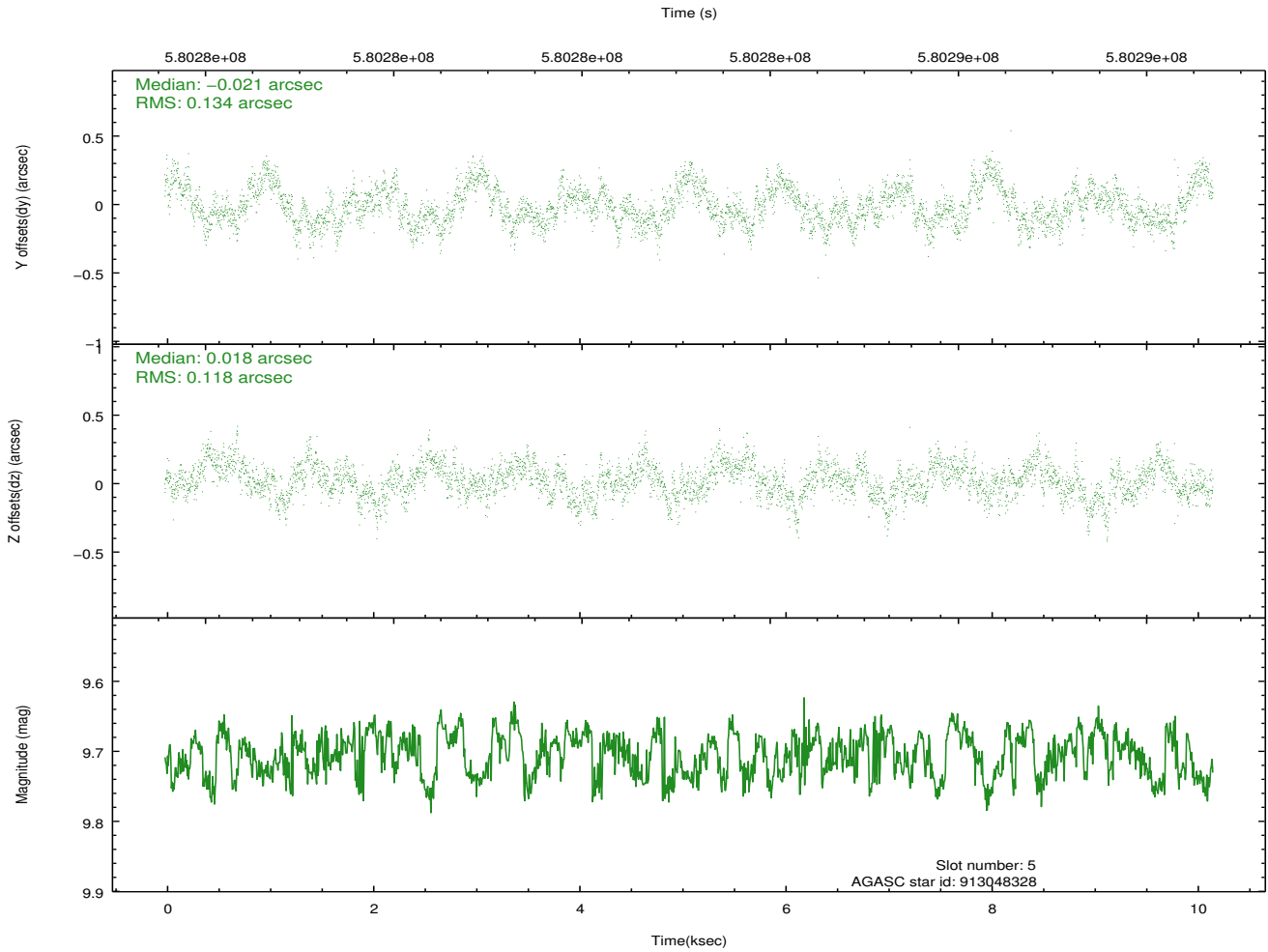
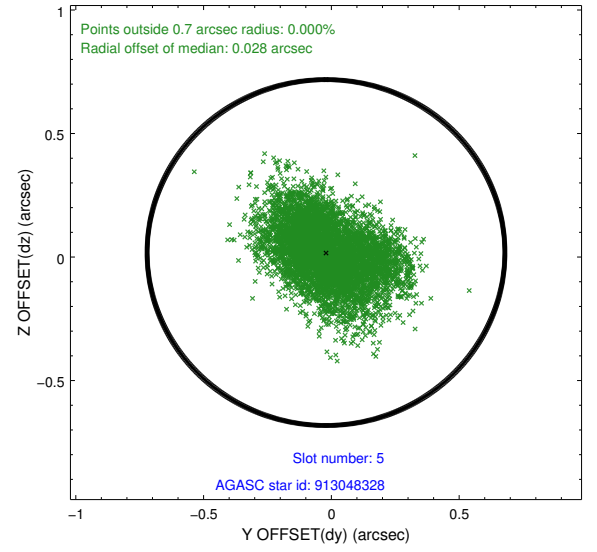
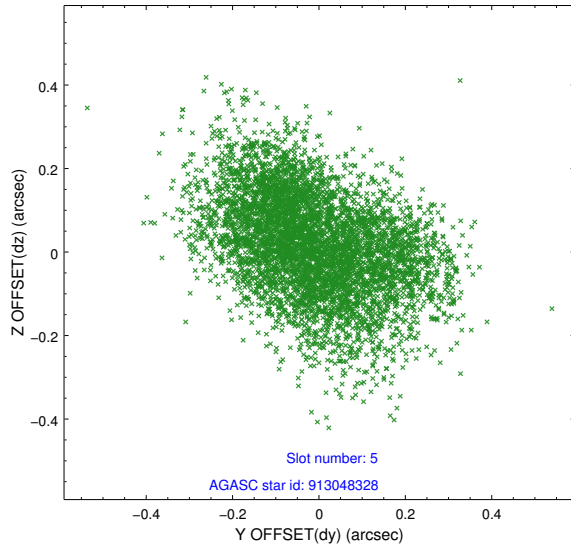
### 2.4.1 Slot 3



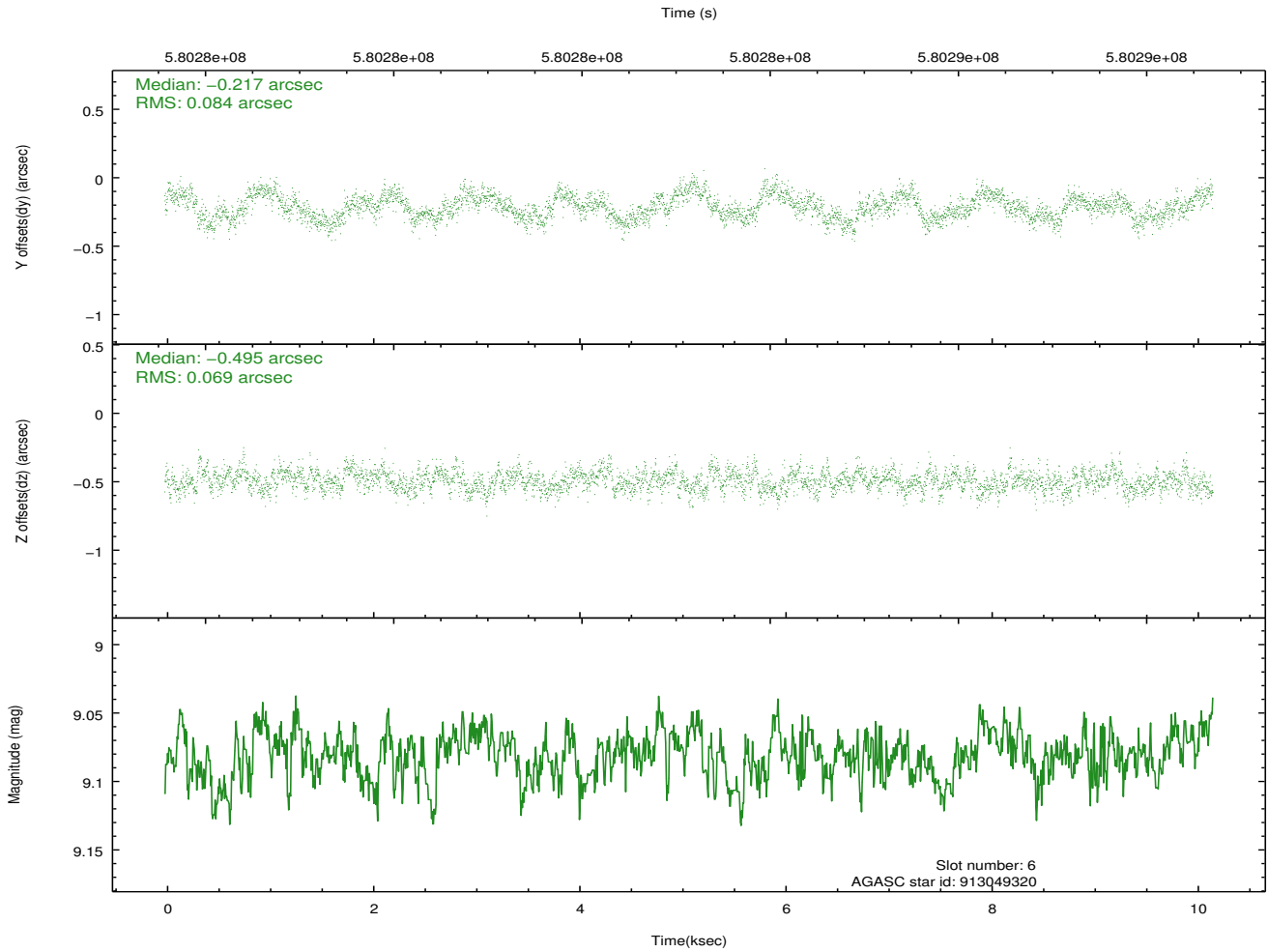
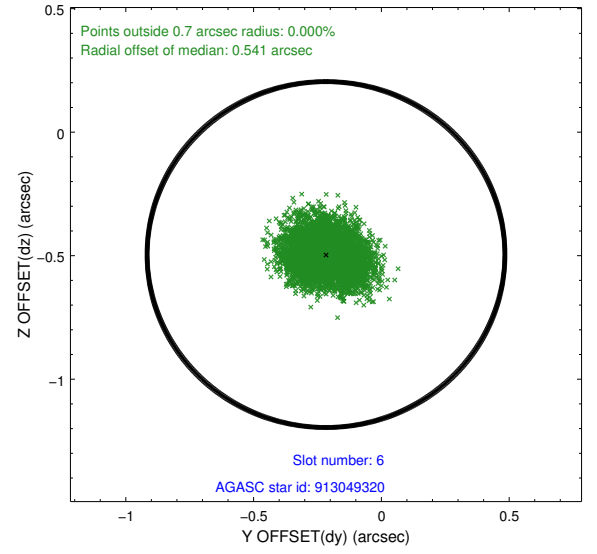
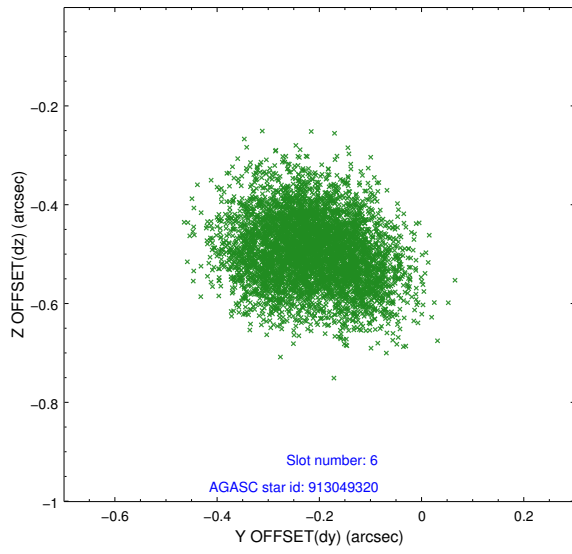
## 2.4.2 Slot 4



### 2.4.3 Slot 5

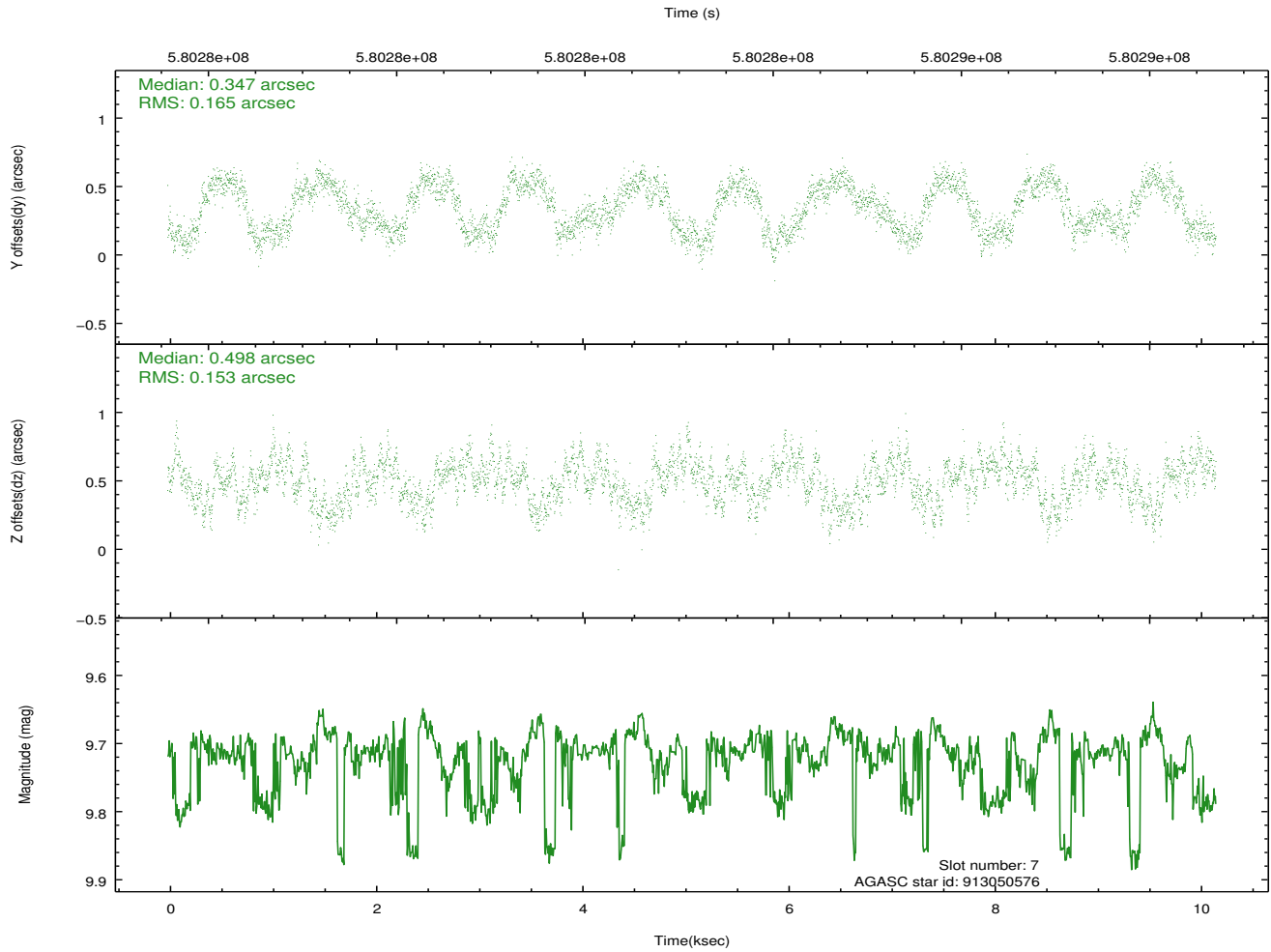
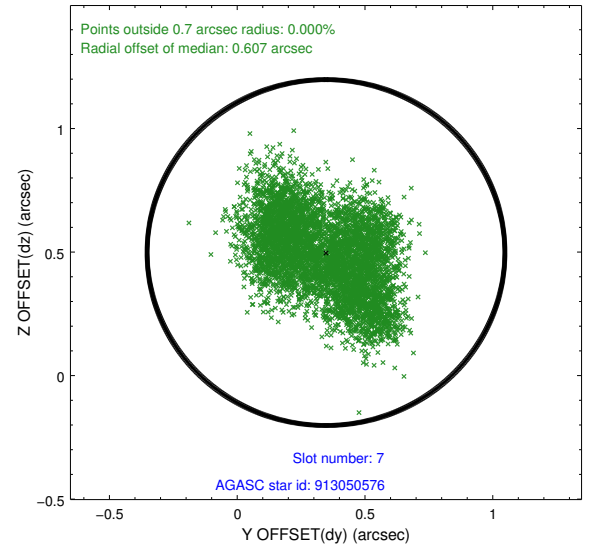
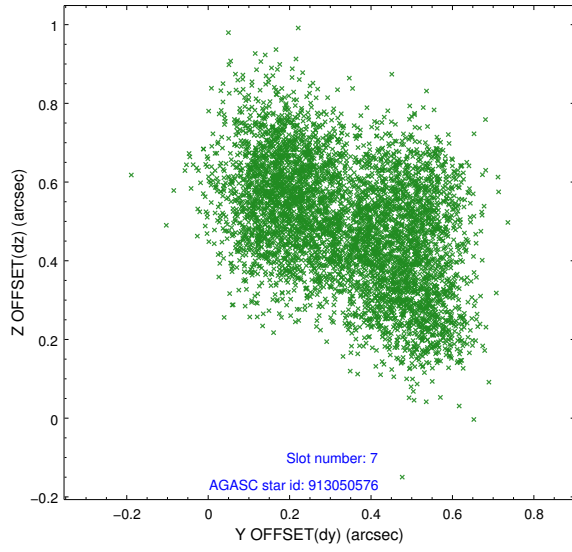


## 2.4.4 Slot 6



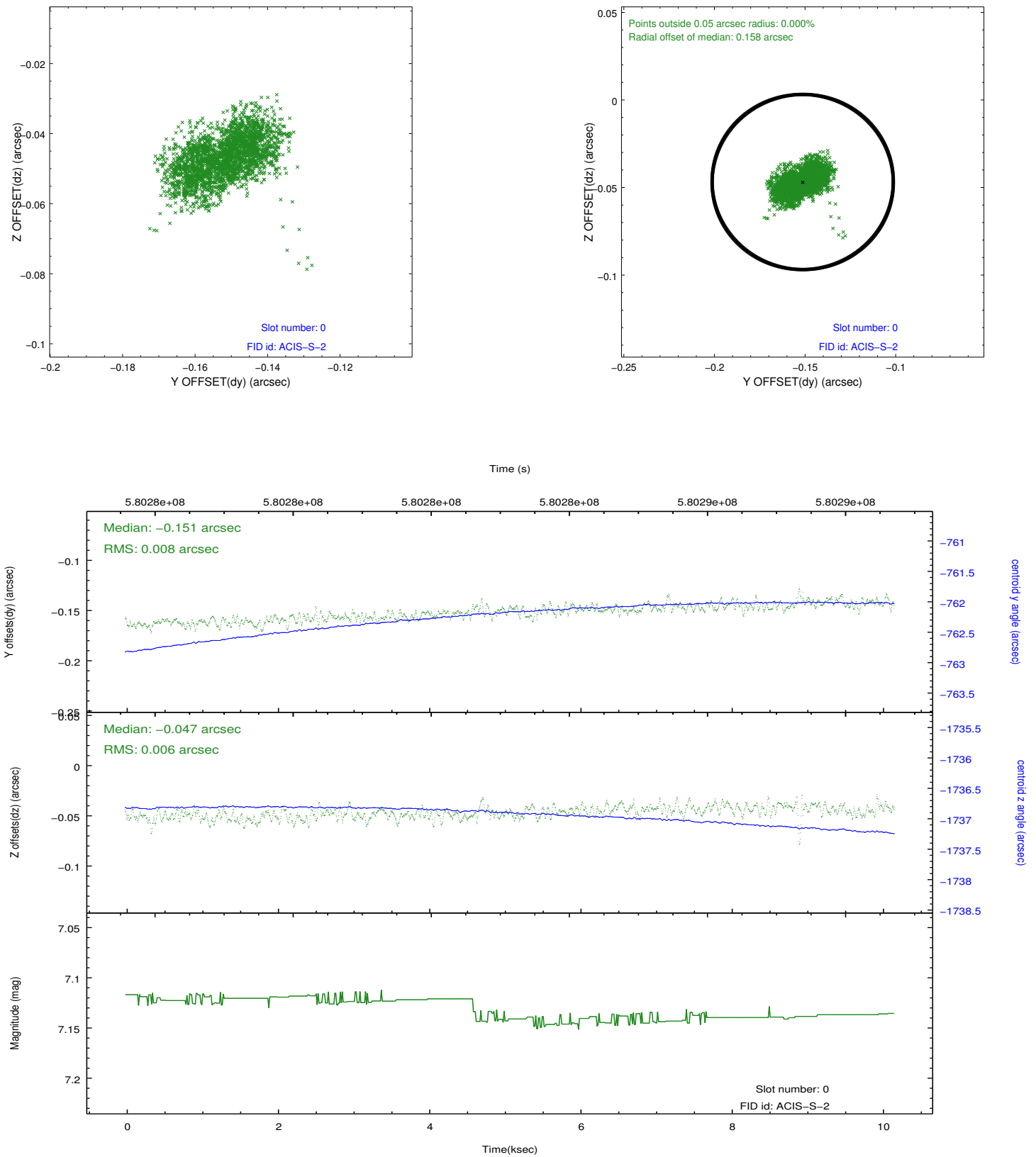


## 2.4.5 Slot 7

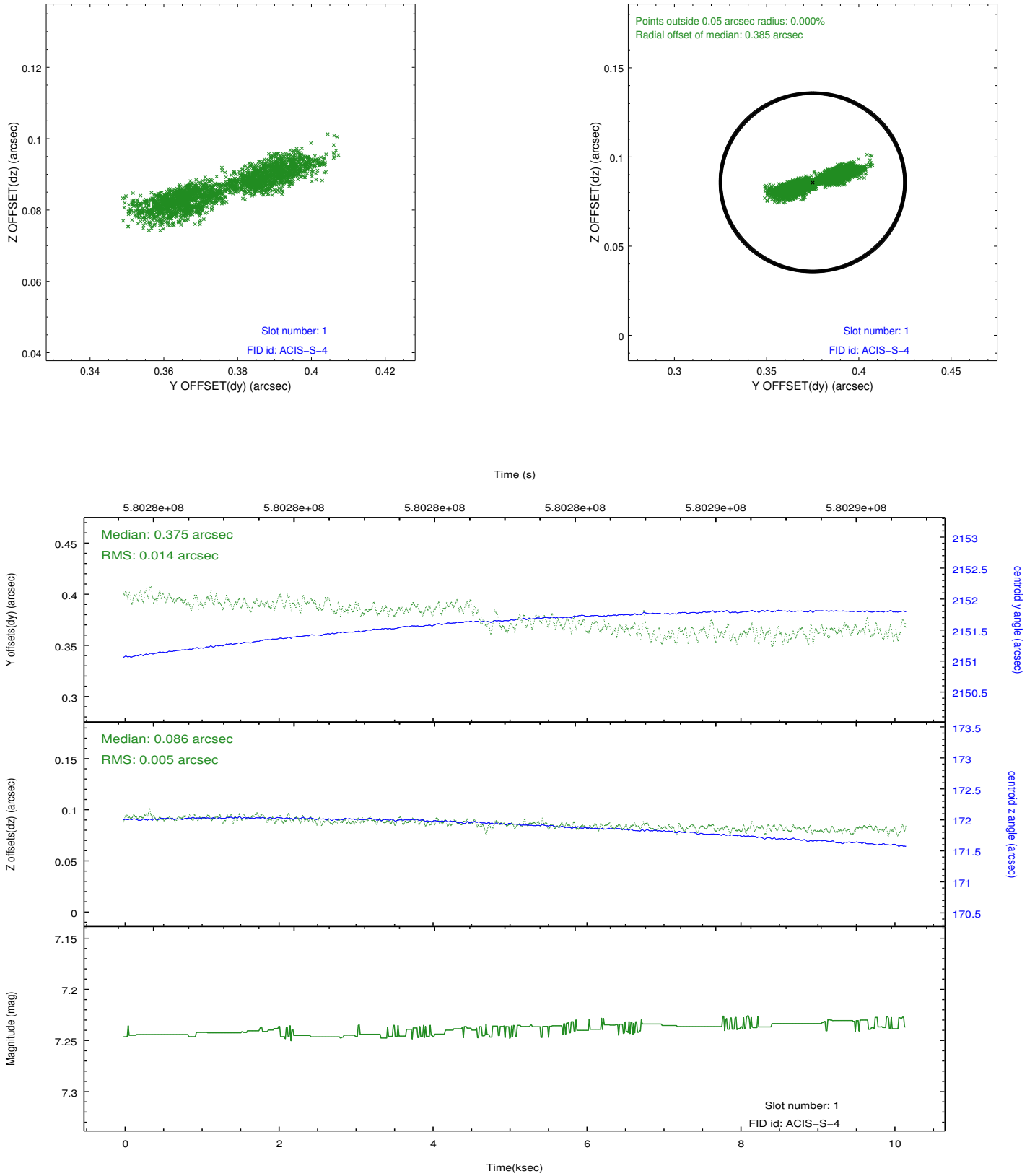


## 2.5 FID Slots

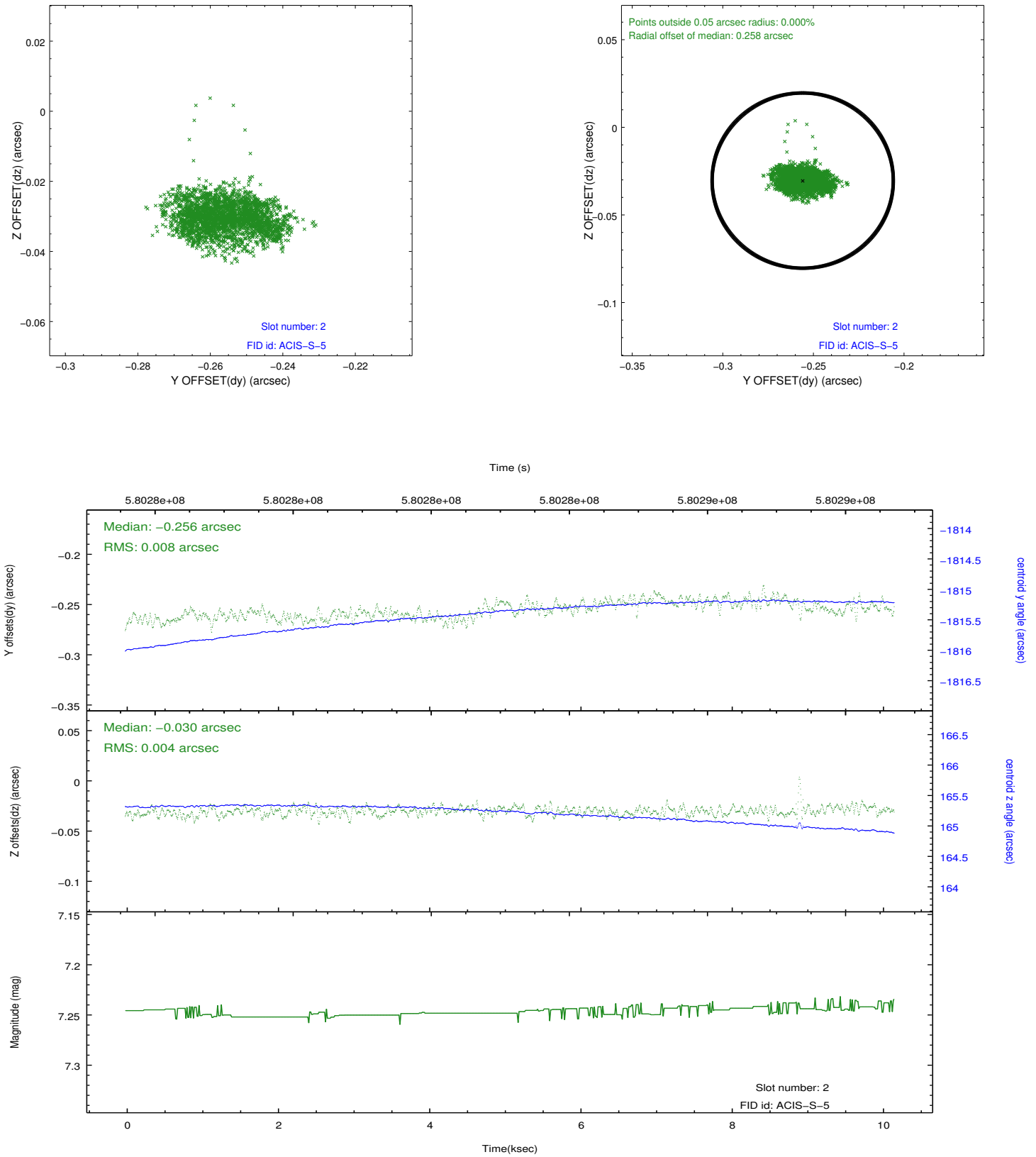
### 2.5.1 Slot 0



## 2.5.2 Slot 1



### 2.5.3 Slot 2



## A Summary

### A.1 Status

V&V Scientist	Beth Sundheim
V&V Date (YYYY-MM-DD)	2016.05.23
V&V Edition	1
V&V Disposition and Status	OK
V&V Charge Time	9.9328001480103

### A.2 Comments