

V&V Reference Report

L2 ASCDS Version : 10.4.3.1

Observation 18637 - L2 Version 1
Chandra X-Ray Center

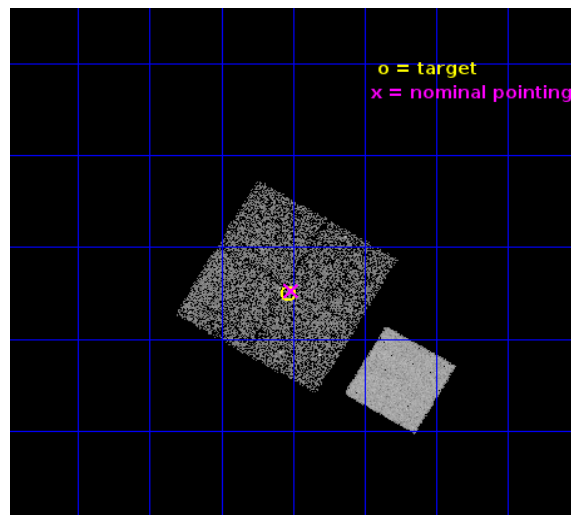
L2 Processing Date : Jun 6 2016

Contents

1	Front	2
2	OBI	3
2.1	OBI	3
2.1.1	Images	3
2.1.2	Bias	3
2.1.3	Parameters	4
2.1.4	Events	4
2.2	Compared Parameters	5
2.3	Aspect	6
2.4	Star Slots	9
2.4.1	Slot 3	9
2.4.2	Slot 4	10
2.4.3	Slot 5	11
2.4.4	Slot 6	12
2.4.5	Slot 7	13
2.5	FID Slots	14
2.5.1	Slot 0	14
2.5.2	Slot 1	15
2.5.3	Slot 2	16
A	Summary	17
A.1	Status	17
A.2	Comments	17

1 Front

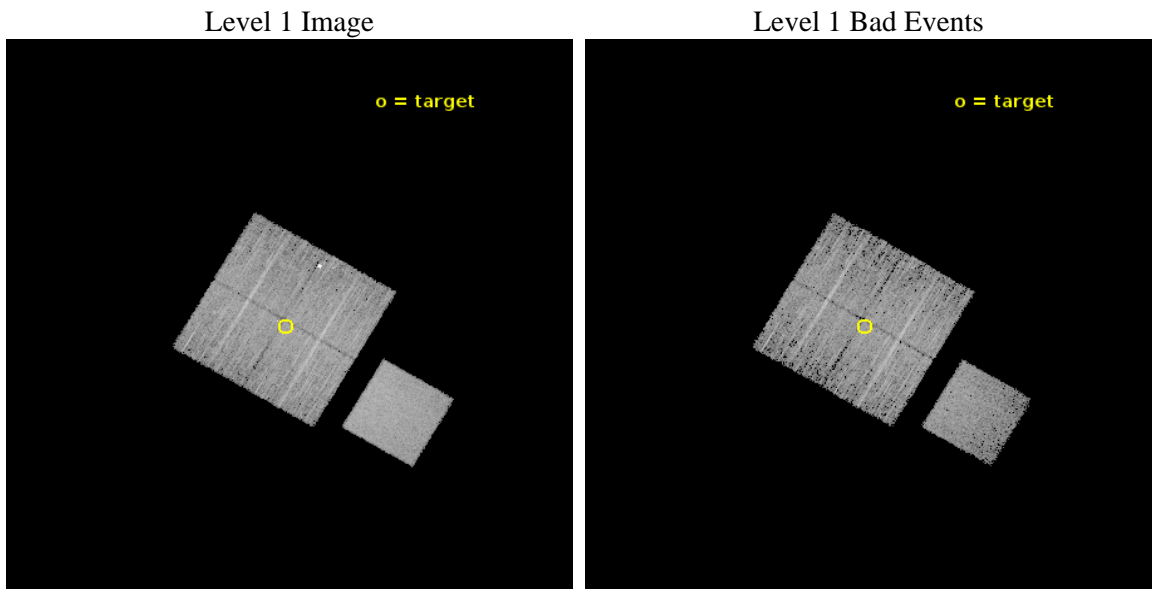
seq_num	801645	Sequence number
obs_id	18637	Observation id
title	Lensing Calibration of the Evolution of Cluster Scaling Relations for eROSITA	Proposal title
observer	Dr. Peter Predehl	Principal investigator
object	CODEX 55412	Source name
dtcycle	0	
cycle	P	events from which exps? Prim/Second/Both
ra_targ	27.758333	Observer's specified target RA [deg]
dec_targ	-0.58375	Observer's specified target Dec [deg]
ra_nom	27.752704230044	Nominal RA [deg]
dec_nom	-0.57916567415259	Nominal Dec [deg]
roll_nom	120.45493576639	Nominal Roll [deg]
revision	1	Processing version of data
ontime	7033.3685423136	Sum of GTIs [s]
livetime	6941.4724044177	Livetime [s]
ontime0	7033.2454222441	Sum of GTIs [s]
ontime1	7023.8633415699	Sum of GTIs [s]
ontime2	7027.0454118252	Sum of GTIs [s]
ontime3	7033.3685423136	Sum of GTIs [s]
ontime7	7033.4095822573	Sum of GTIs [s]
l2events	41593	Number of level 2 events



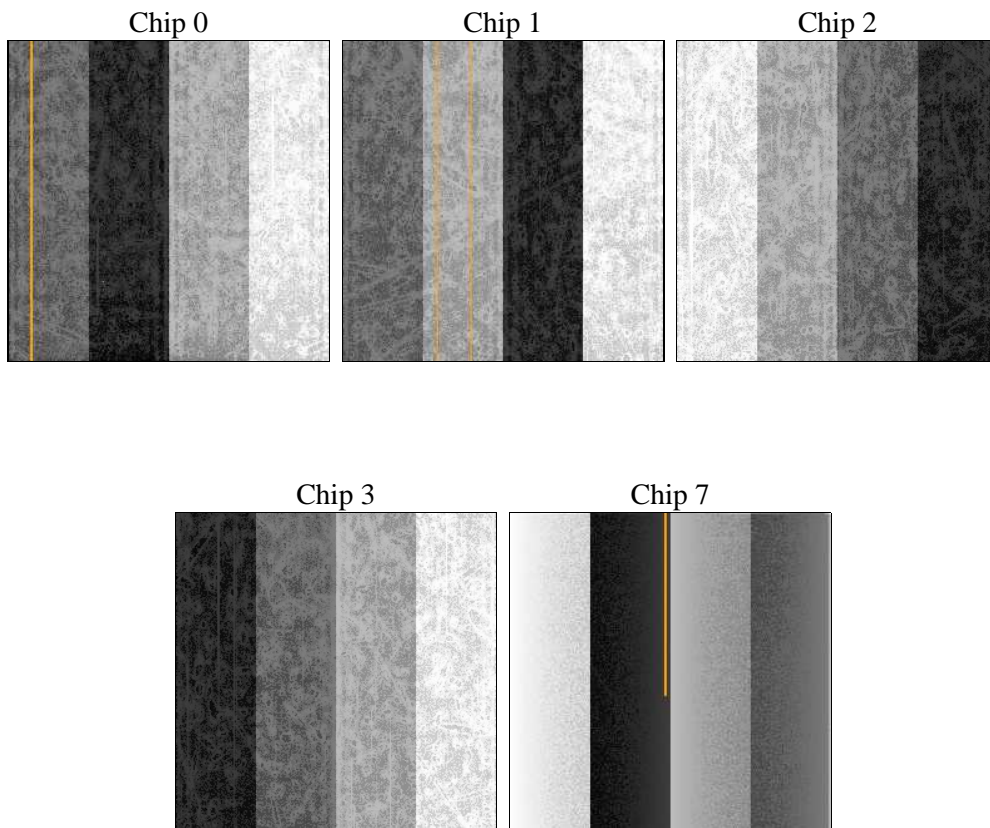
2 OBI

2.1 OBI

2.1.1 Images



2.1.2 Bias



2.1.3 Parameters

obi_num	0	Obi number	sched_exp_time	7000.000000	[s] Scheduled observation exposure time
ascdsver	10.4.3.1	Processing system revision	ontime	7033.3685423136	Sum of GTIs [s]
caldsver	4.7.2	 	ontime0	7033.2454222441	Sum of GTIs [s]
date	2016-06-06T14:55:50	Date and time of file creation	ontime1	7023.8633415699	Sum of GTIs [s]
revision	1	Processing version of data	ontime2	7027.0454118252	Sum of GTIs [s]
			ontime3	7033.3685423136	Sum of GTIs [s]
			ontime7	7033.4095822573	Sum of GTIs [s]
			l1events	239519	Number of level 1 events

2.1.4 Events

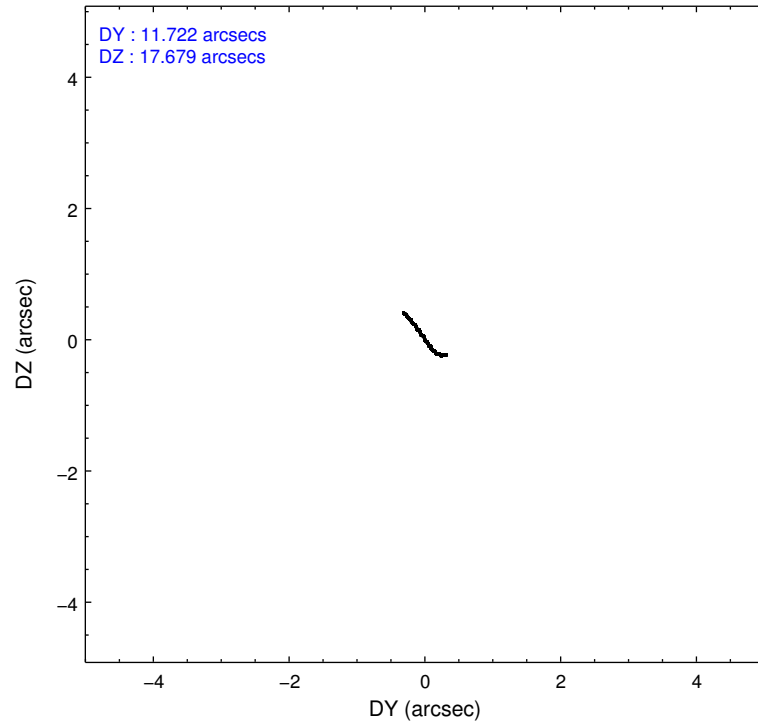
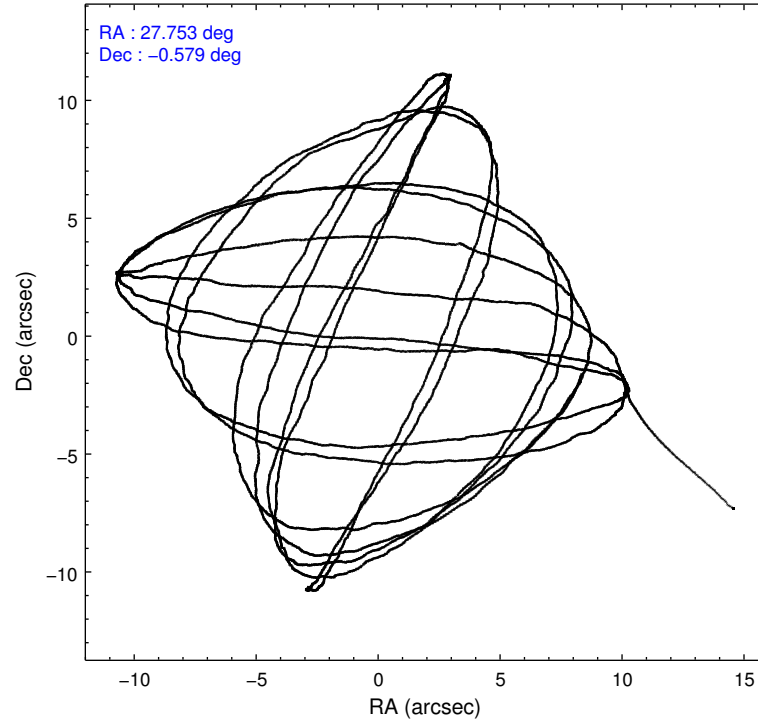
	ccd 0	ccd 1	ccd 2	ccd 3	ccd 7
level 1 events	40980	43918	48616	47420	58585
rejected events	36015	38086	41780	42689	33249
rejected %	87%	86%	85%	90%	56%

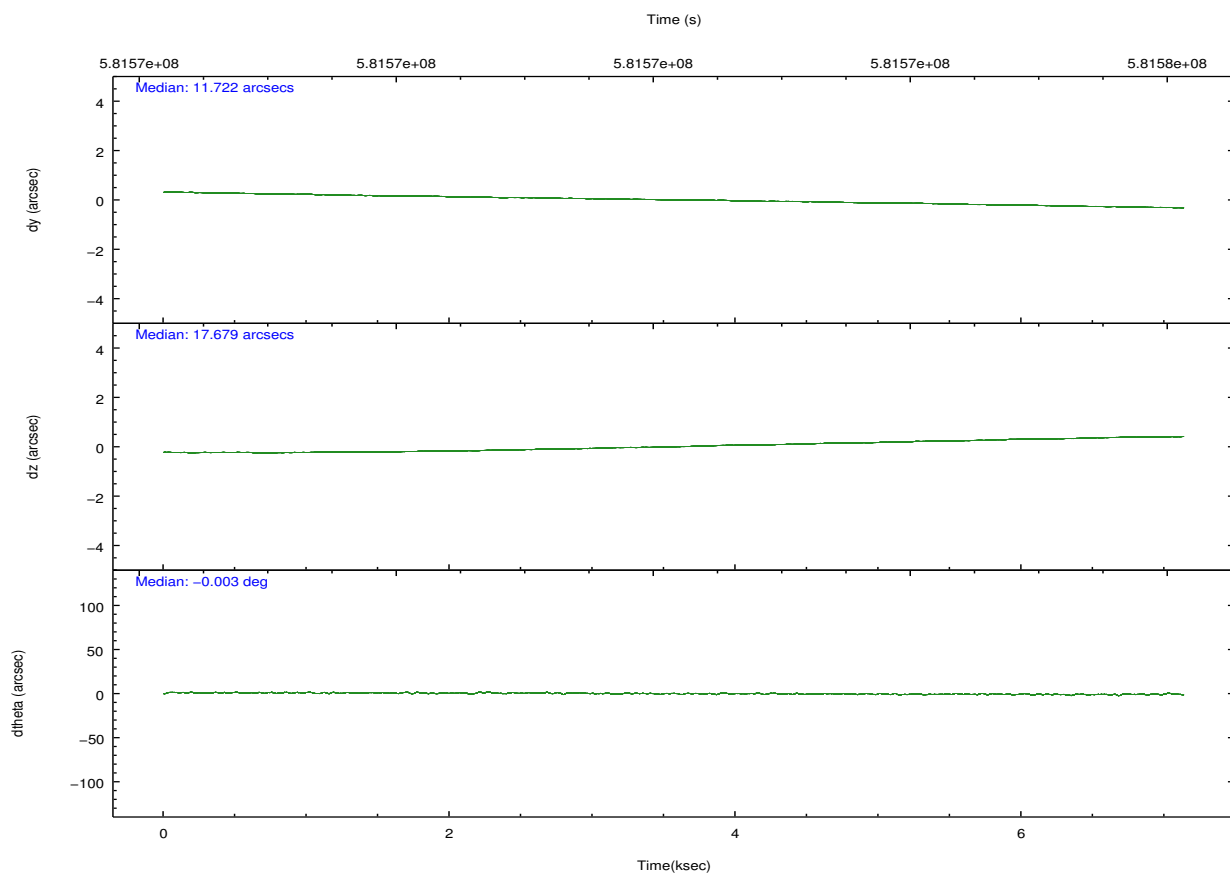
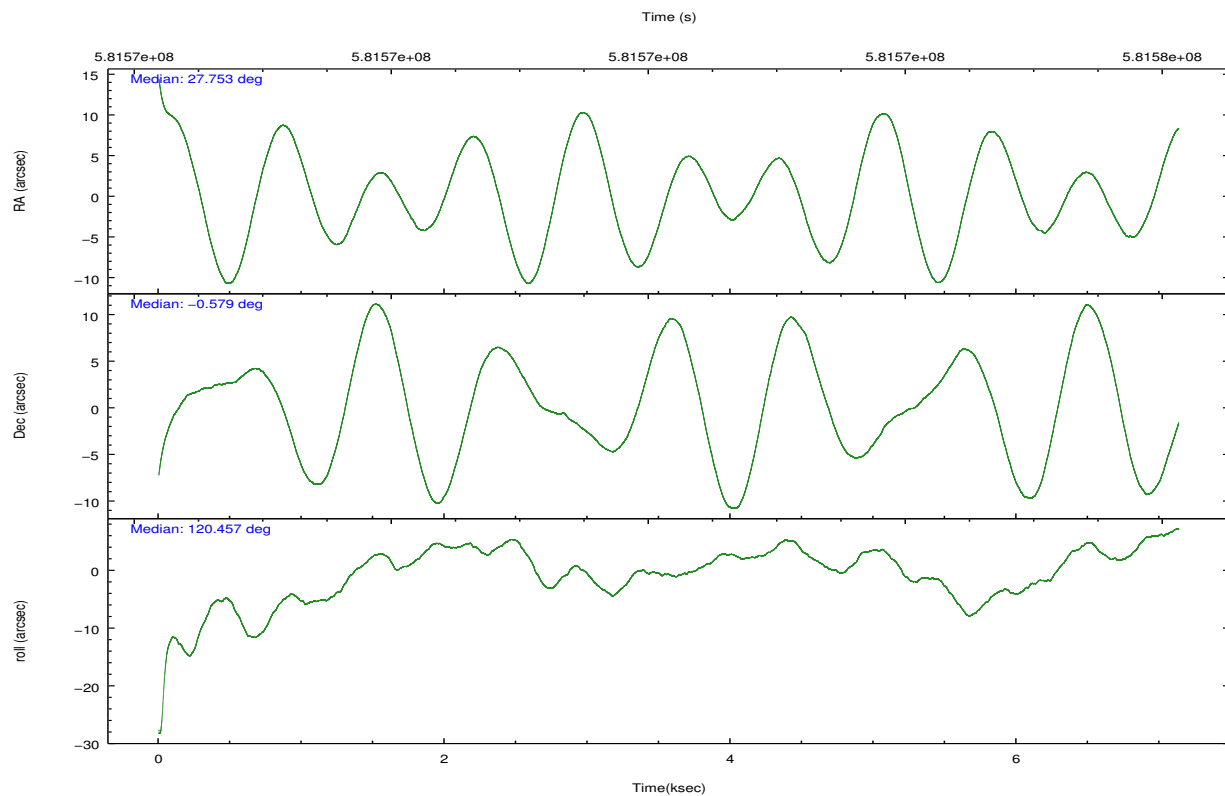
	ccd 0	ccd 1	ccd 2	ccd 3	ccd 7
grade 0 events	1730	2023	1739	1734	2104
	4%	4%	3%	3%	3%
grade 1 events	24	24	21	22	78
	0%	0%	0%	0%	0%
grade 2 events	1205	1457	3199	1000	5313
	2%	3%	6%	2%	9%
grade 3 events	521	558	483	506	1994
	1%	1%	0%	1%	3%
grade 4 events	448	524	489	501	1879
	1%	1%	1%	1%	3%
grade 5 events	1974	2011	1925	2241	5619
	4%	4%	3%	4%	9%
grade 6 events	1064	1275	931	993	14066
	2%	2%	1%	2%	24%
grade 7 events	34014	36046	39829	40423	27532
	83%	82%	81%	85%	46%

2.2 Compared Parameters

Parameter	Planned	Actual	Parameter	Planned	Actual
Instrument	ACIS	ACIS	Obspar format version number	7	7
Detector	ACIS-01237	ACIS-01237	Obspar file type	PREDICTED	ACTUAL
Grating	NONE	NONE	Obspar update status	NONE	UPDATED
Data mode	VFAINT	VFAINT	CCD I0 on	Y	Y
Observation mode	POINTING	POINTING	CCD I1 on	Y	Y
[deg] Pointing RA	27.776728	27.75270423004423	CCD I2 on	Y	Y
[deg] Pointing Dec	-0.592658	-0.5791656741525926	CCD I3 on	Y	Y
[deg] Pointing Roll	120.246544	120.4549357663939	CCD S0 on	N	N
[mm] SIM focus pos	-0.782348	-0.7809083437167272	CCD S1 on	N	N
[mm] SIM defocus	0	0.001439871863259334	CCD S2 on	N	N
[mm] SIM translation stage pos	-233.592463	-233.5874344608287	CCD S3 on	O1	Y
[mm] SIM translation stage offset	0	-0.005018542100998502	CCD S4 on	N	N
[s] Observation start time (MET)	581568716.184000	581567374.92448	CCD S5 on	N	N
Observation start date	2016-06-06T02:50:48	2016-06-06T02:29:34	Number of optional ACIS chips dropped	0	0
[s] Observation end time (MET)	581575716.184000	581576551.2375	On-chip summing requested	N	N
Observation end date	2016-06-06T04:47:28	2016-06-06T05:02:31	Subarray requested	NONE	NONE
Read mode	TIMED	TIMED	Alternating exposures requested	N	N
			[s] Primary exposure time	0.000000	3.1

2.3 Aspect



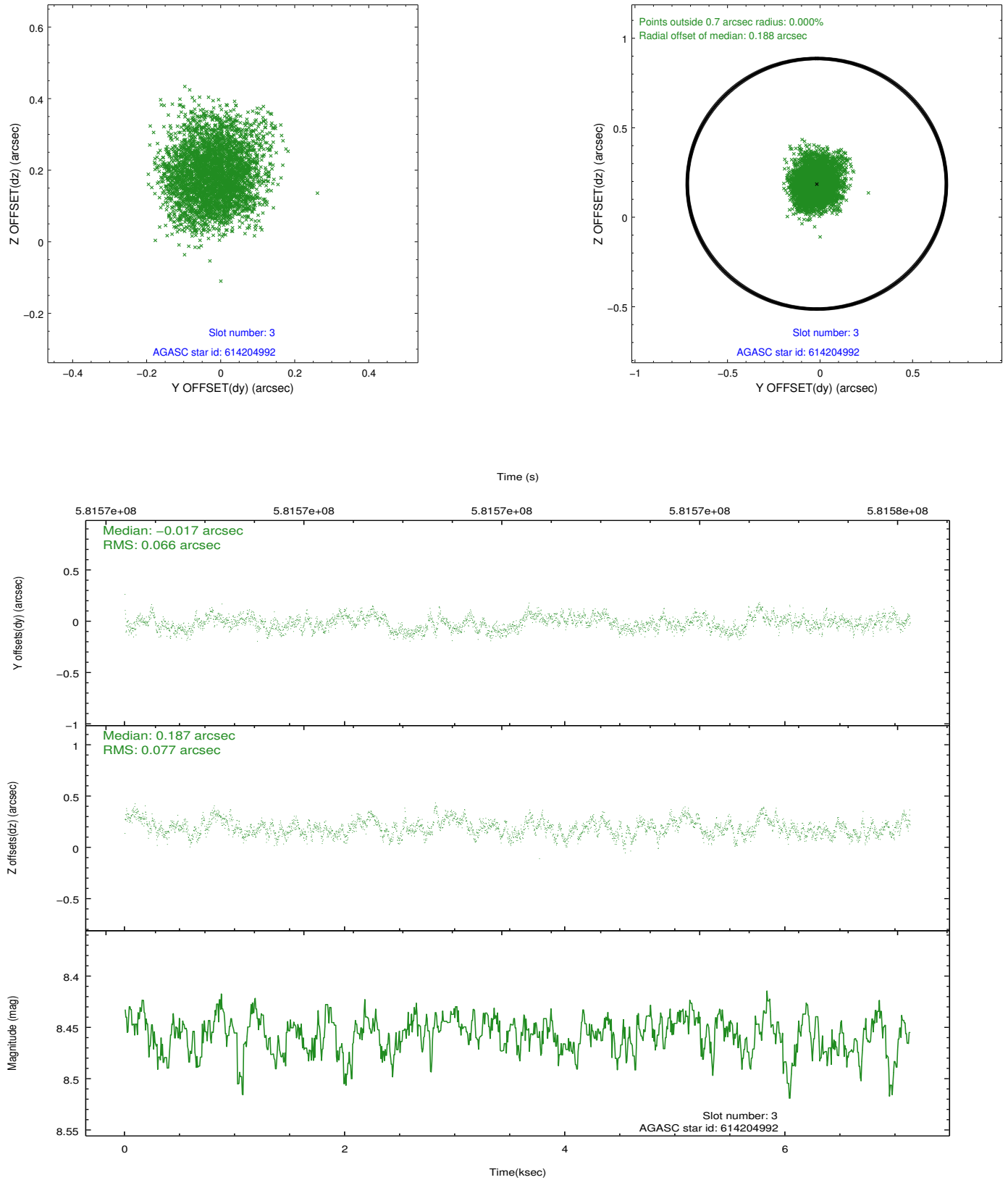


Slot Statistics

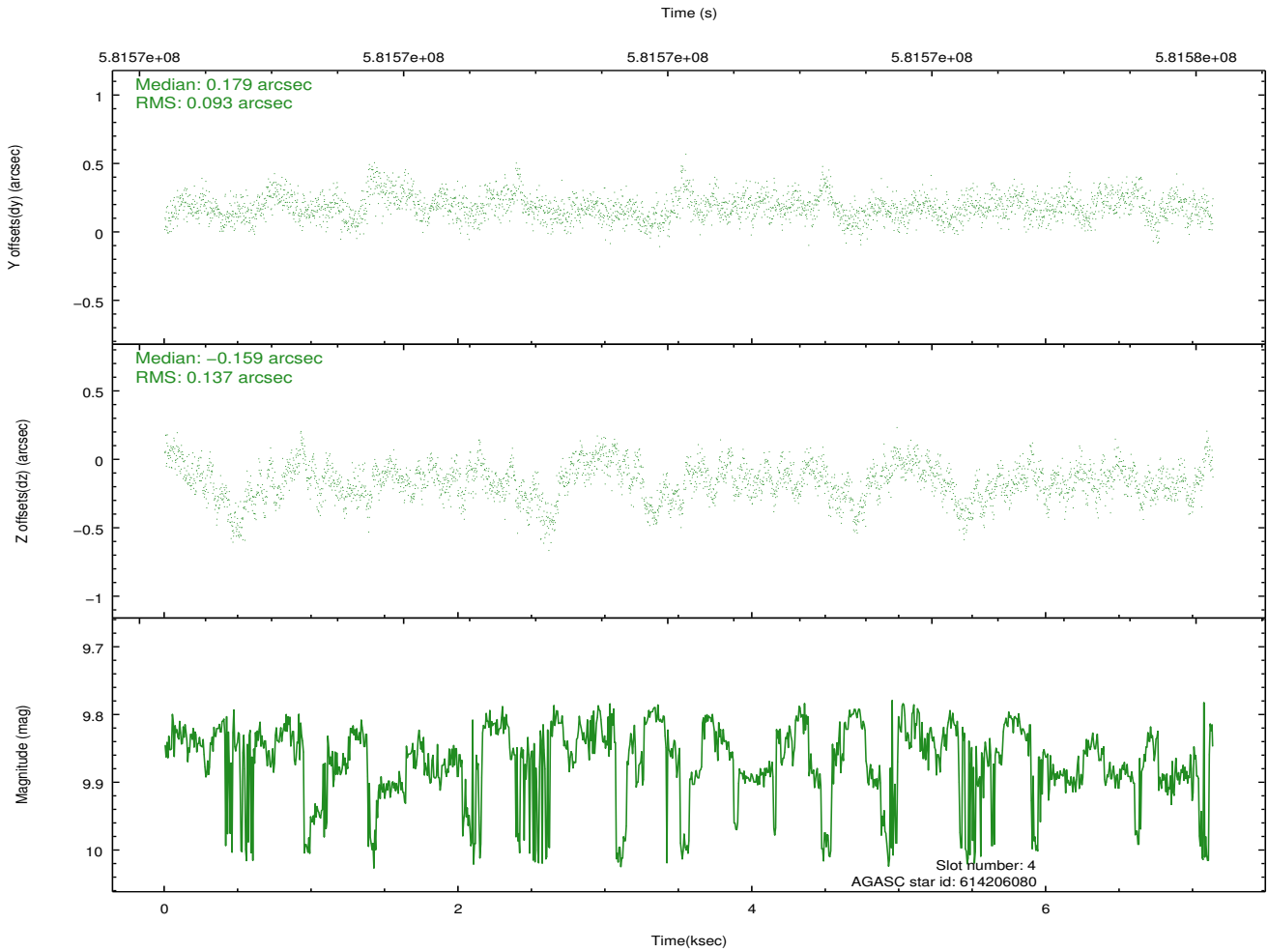
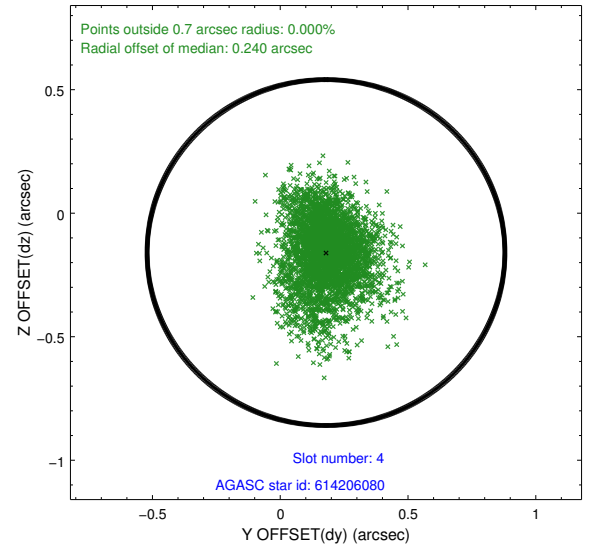
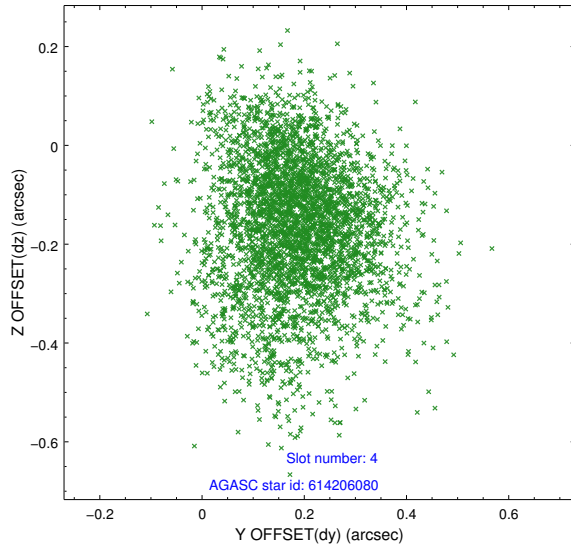
slot	status	used	id	mag	n_pts	med_dy	med_dz	dr1	dr2	ra	dec	mean_y	mean_z
0	FID		ACIS-I-1	7.25	1740	0.066	-0.019	0.017	0.025	0.000000	0.000000	927.91	-841.38
1	FID		ACIS-I-5	7.26	1740	-0.291	0.049	0.006	0.011	0.000000	0.000000	-1820.15	1055.71
2	FID		ACIS-I-6	7.26	1740	0.134	0.040	0.017	0.024	0.000000	0.000000	392.59	1701.17
3	GUIDE	used	614204992	8.46	3481	-0.017	0.187	0.109	0.169	27.733117	-0.287861	1027.63	-416.97
4	GUIDE	used	614206080	9.86	3476	0.179	-0.159	0.173	0.297	27.717528	-1.010107	-1189.98	941.22
5	GUIDE	used	614208096	9.39	3479	0.315	0.571	0.164	0.266	28.605478	-0.810535	-2180.26	-2180.67
6	GUIDE	used	614208104	8.69	3480	0.126	-0.286	0.118	0.187	27.741573	-0.639721	-82.97	194.13
7	GUIDE	used	614213736	9.14	3477	-0.606	-0.303	0.104	0.165	27.170208	-0.361551	1818.33	1467.27

2.4 Star Slots

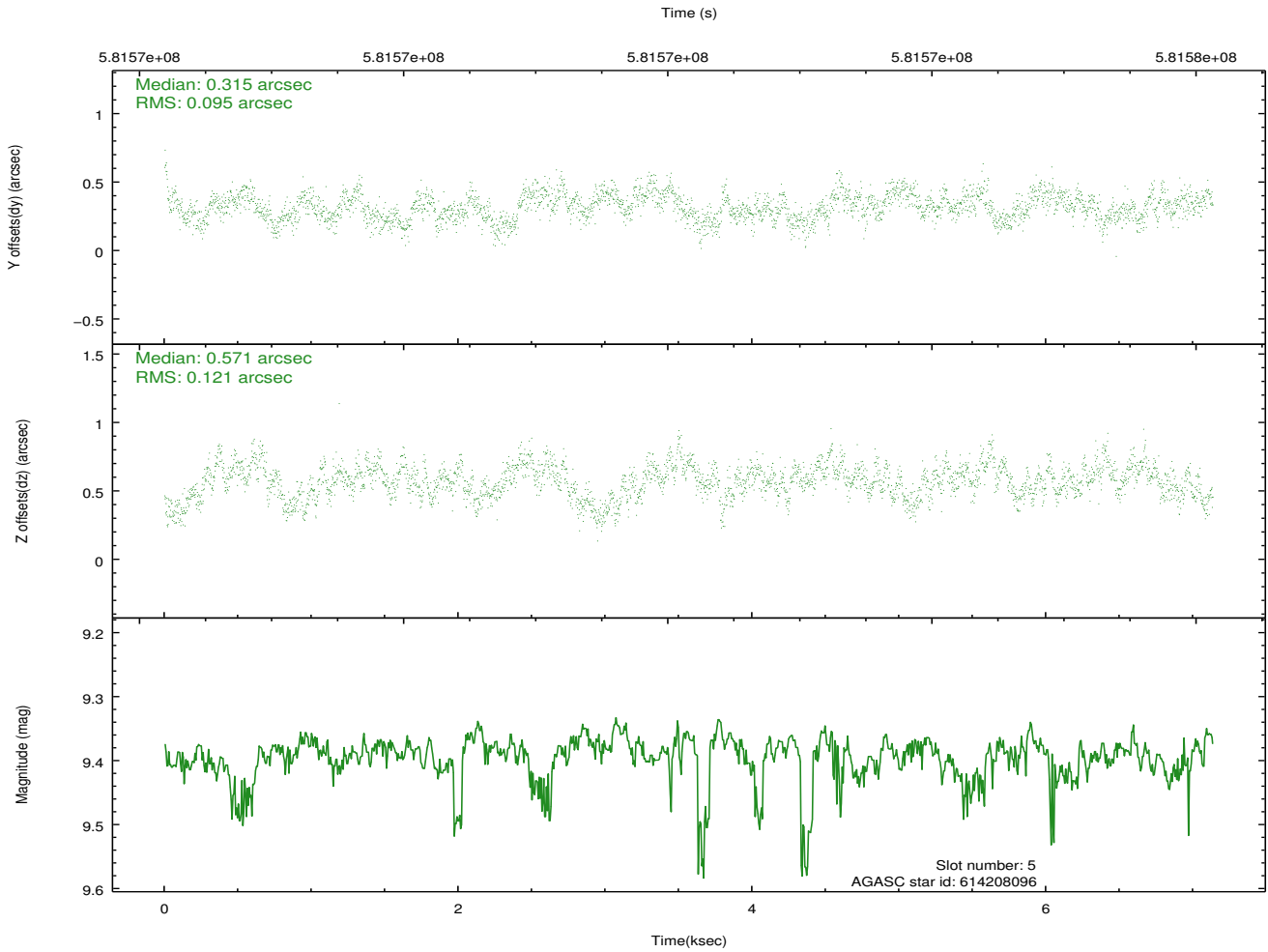
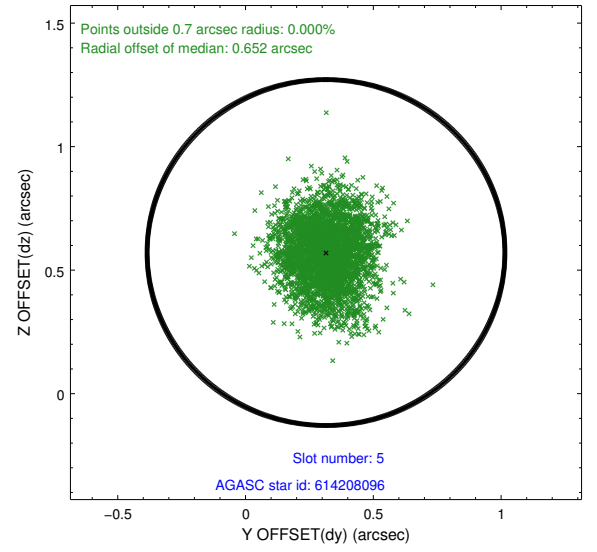
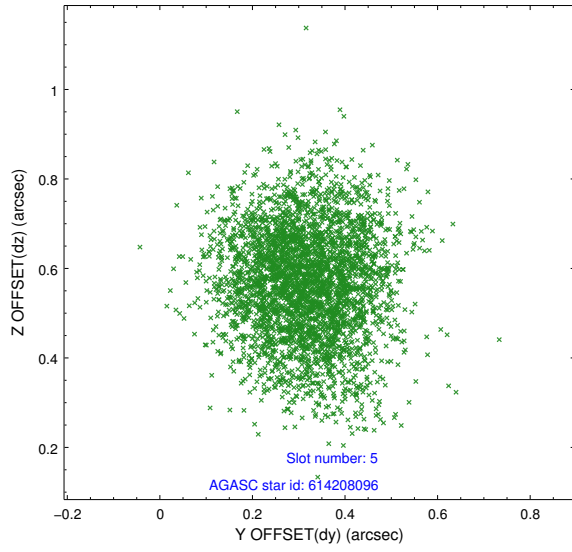
2.4.1 Slot 3



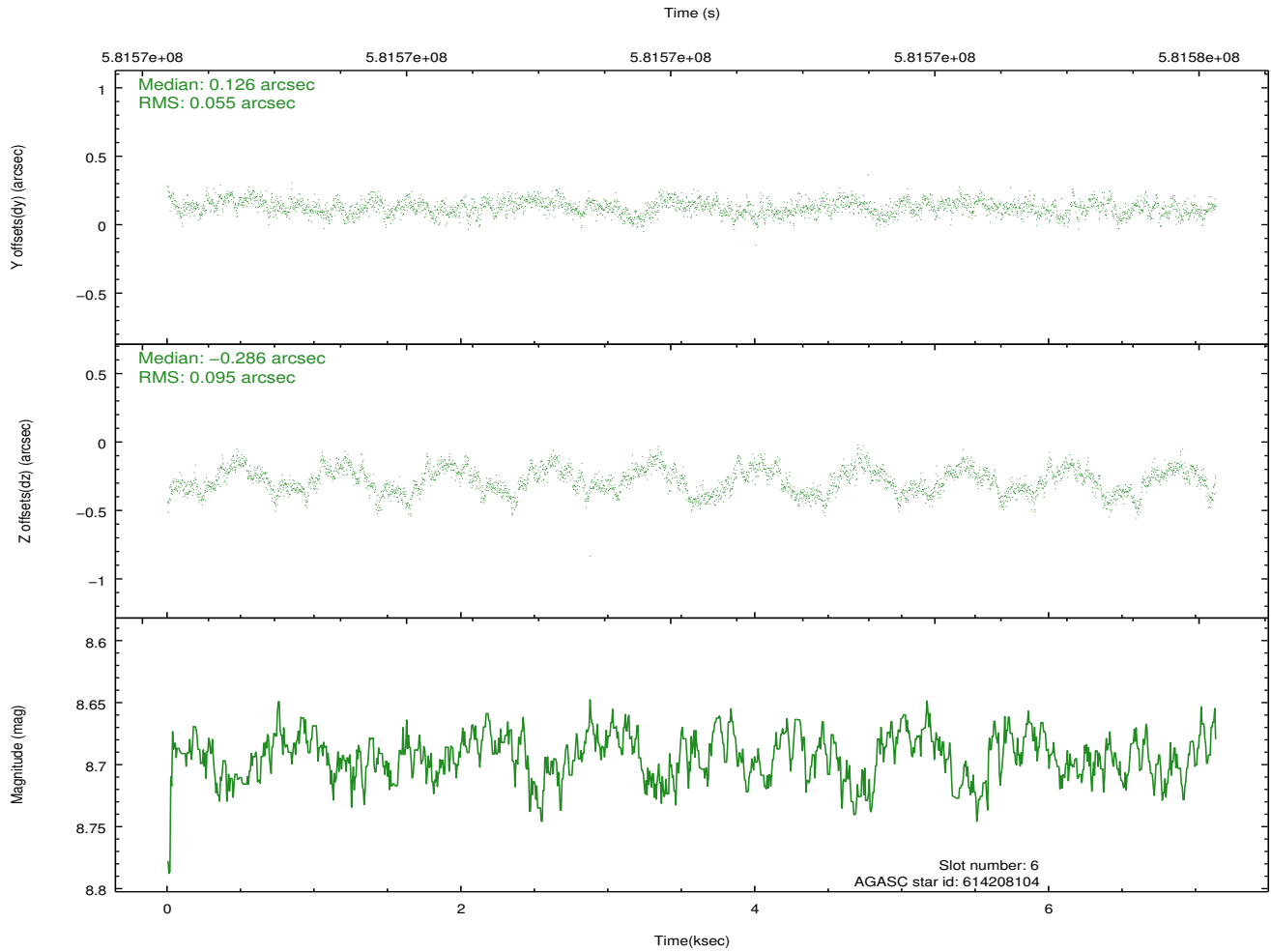
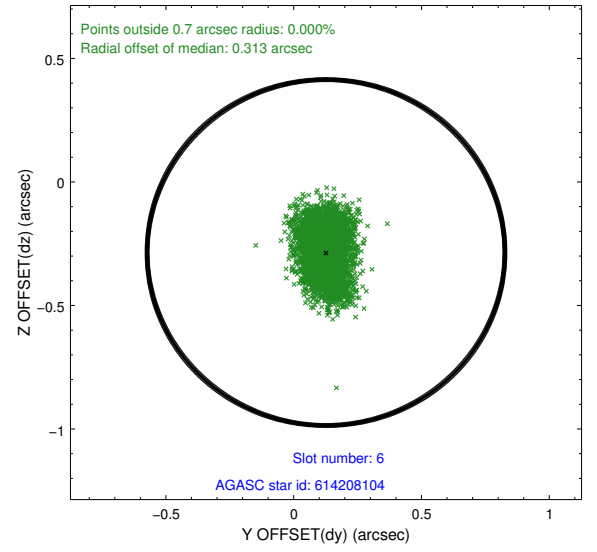
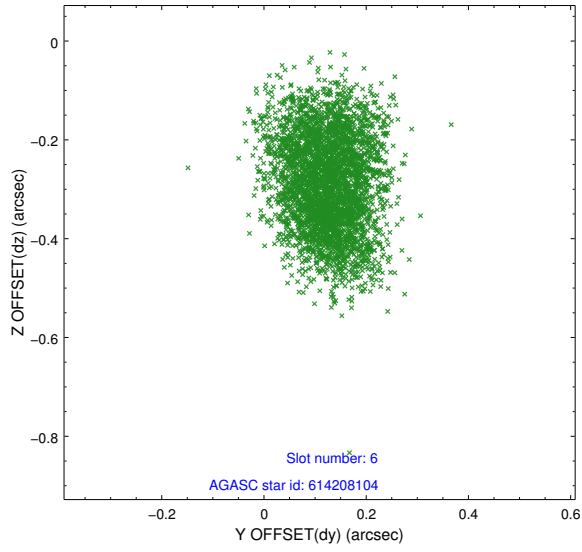
2.4.2 Slot 4



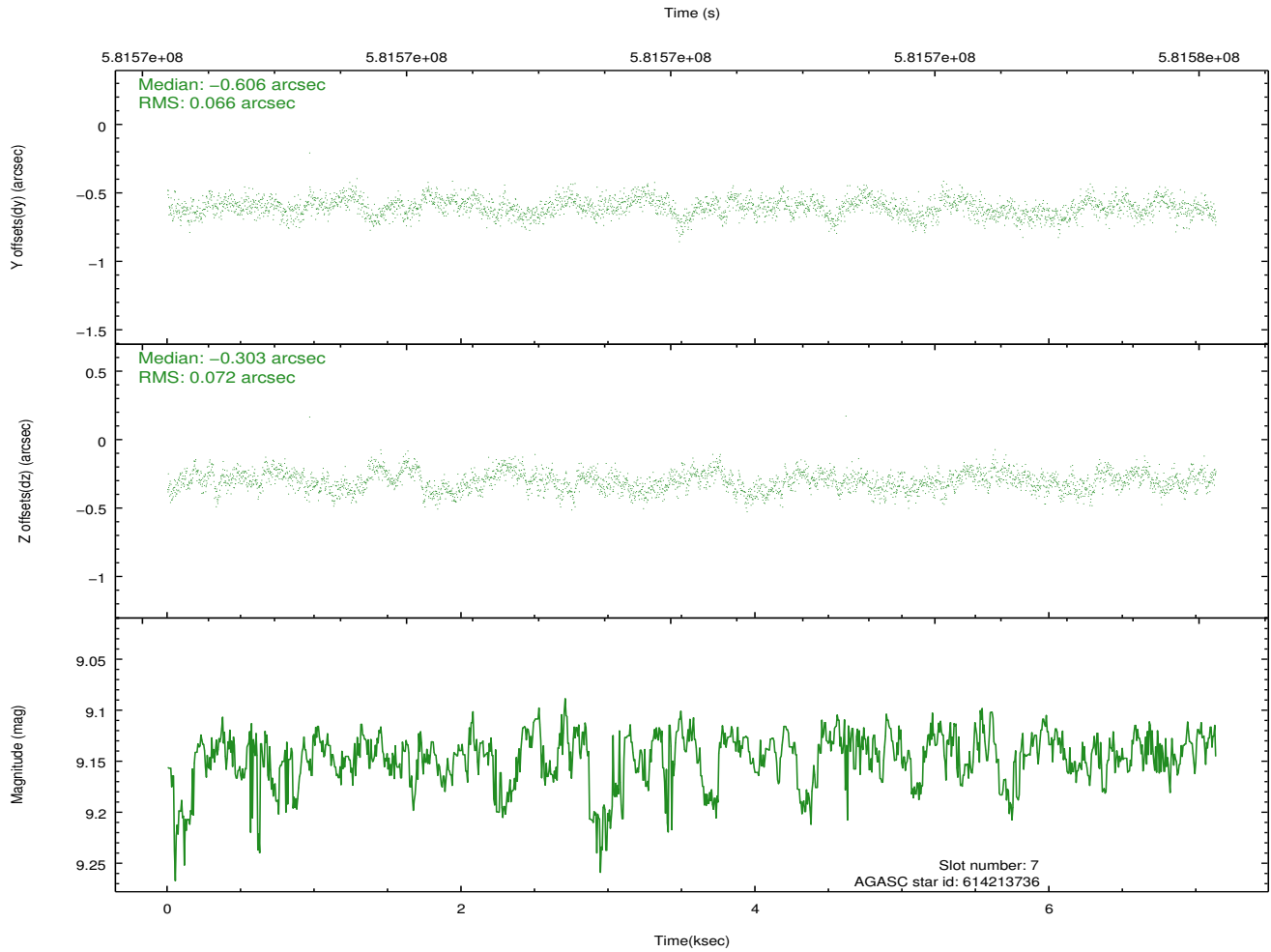
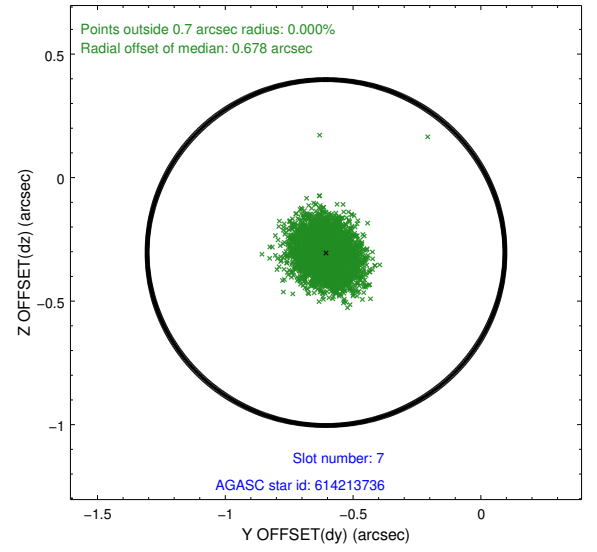
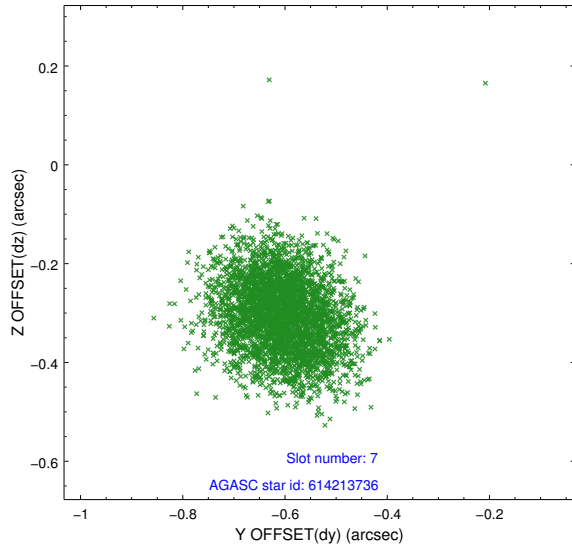
2.4.3 Slot 5



2.4.4 Slot 6

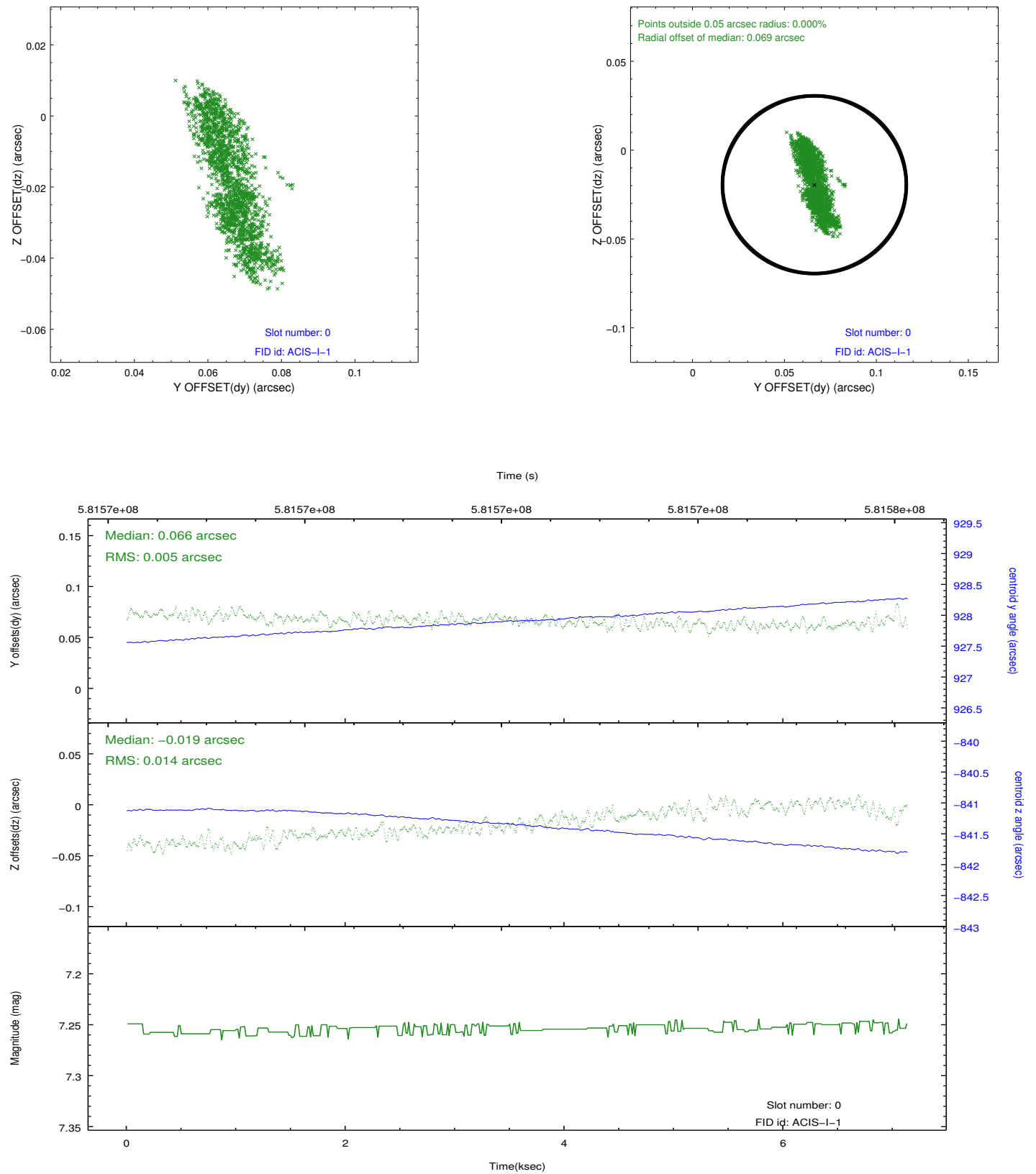


2.4.5 Slot 7

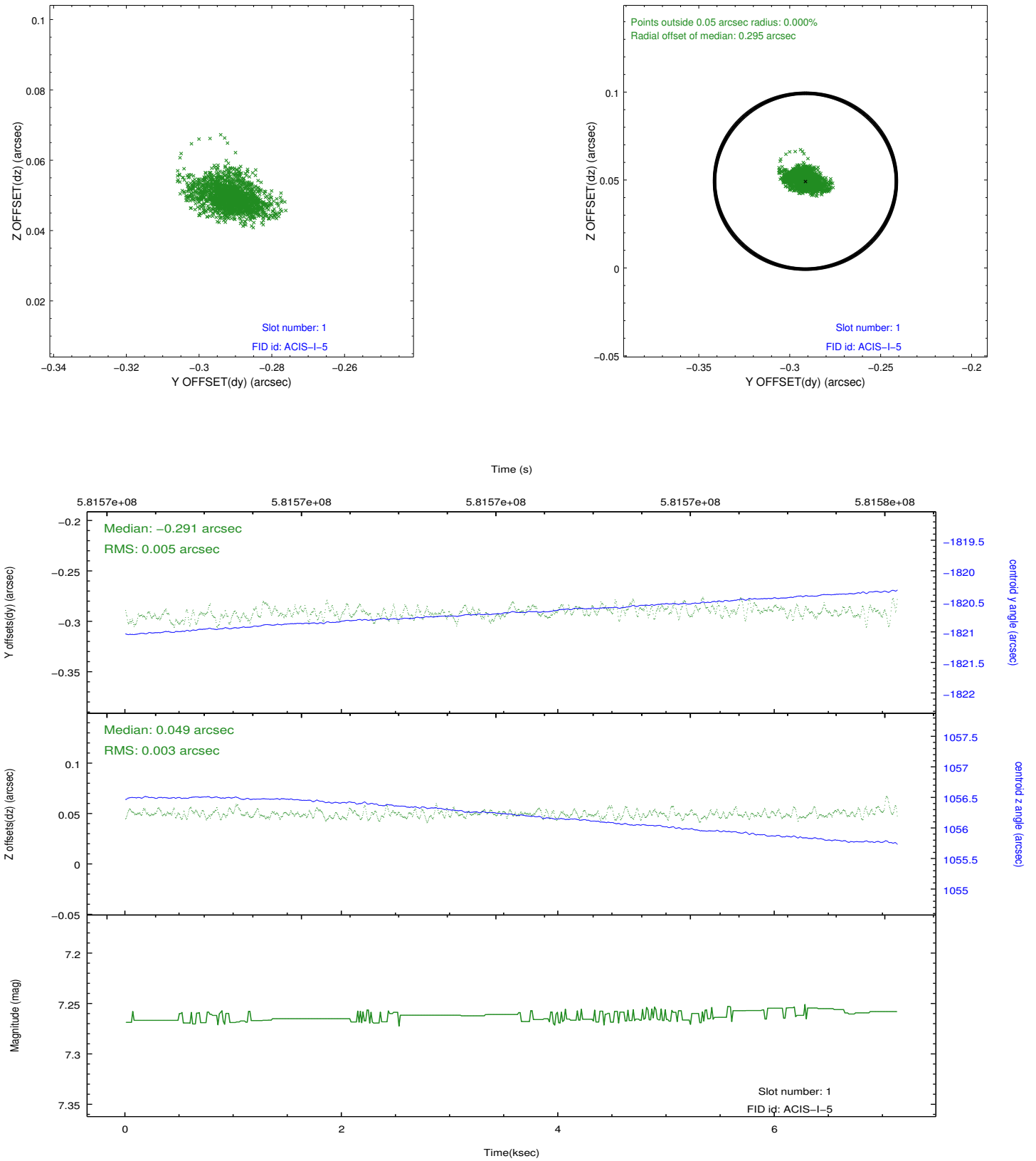


2.5 FID Slots

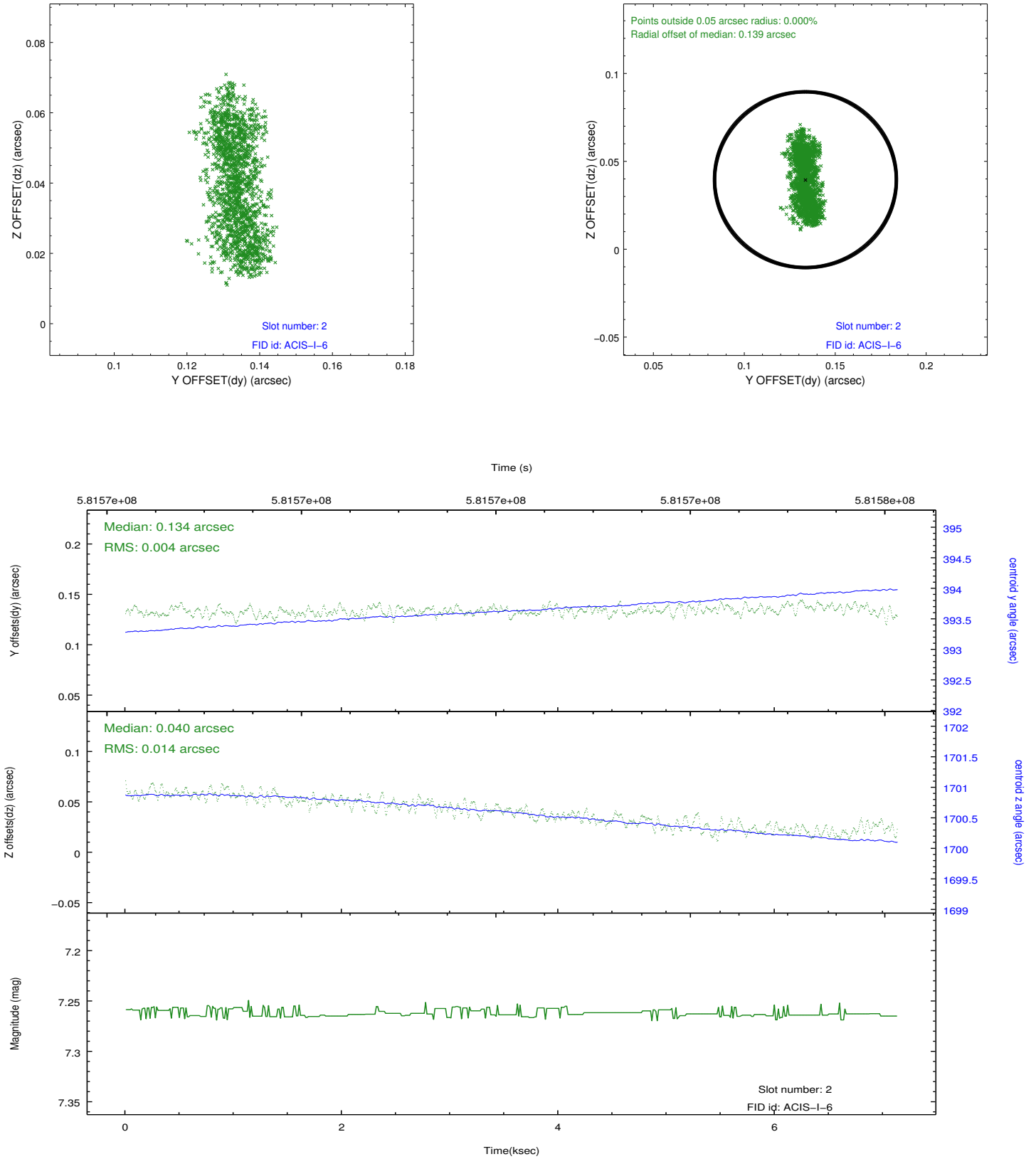
2.5.1 Slot 0



2.5.2 Slot 1



2.5.3 Slot 2



A Summary

A.1 Status

V&V Scientist	Beth Sundheim
V&V Date (YYYY-MM-DD)	2016.06.06
V&V Edition	1
V&V Disposition and Status	OK
V&V Charge Time	7.0333685423136

A.2 Comments