

V&V Reference Report

L2 ASCDS Version : 10.4.3.1

Observation 18626 - L2 Version 1
Chandra X-Ray Center

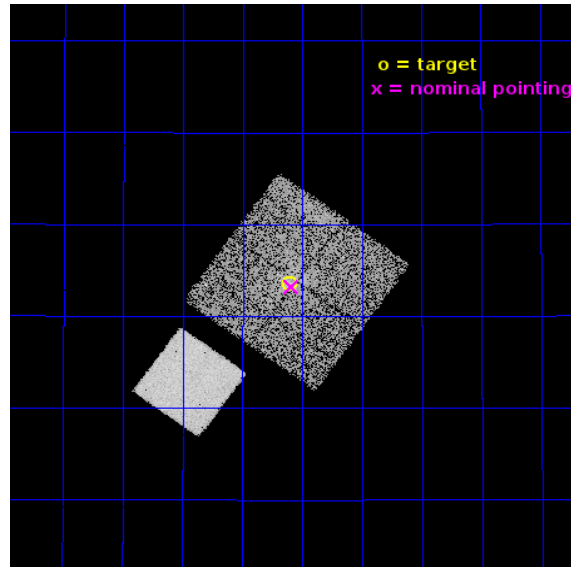
L2 Processing Date : Apr 1 2016

Contents

1	Front	2
2	OBI	3
2.1	OBI	3
2.1.1	Images	3
2.1.2	Bias	3
2.1.3	Parameters	4
2.1.4	Events	4
2.2	Compared Parameters	5
2.3	Aspect	6
2.4	Star Slots	9
2.4.1	Slot 3	9
2.4.2	Slot 4	10
2.4.3	Slot 5	11
2.4.4	Slot 6	12
2.4.5	Slot 7	13
2.5	FID Slots	14
2.5.1	Slot 0	14
2.5.2	Slot 1	15
2.5.3	Slot 2	16
A	Summary	17
A.1	Status	17
A.2	Comments	17

1 Front

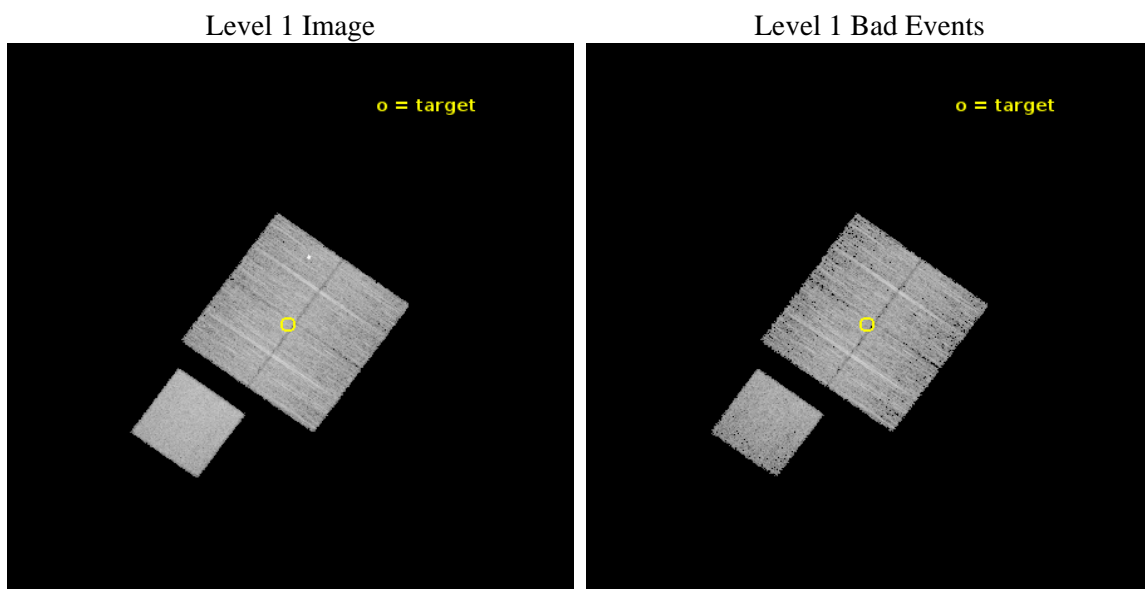
seq_num	801634	Sequence number
obs_id	18626	Observation id
title	Lensing Calibration of the Evolution of Cluster Scaling Relations for eROSITA	Proposal title
observer	Dr. Peter Predehl	Principal investigator
object	CODEX 29811	Source name
dtcycle	0	
cycle	P	events from which exps? Prim/Second/Both
ra_targ	166.5275	Observer's specified target RA [deg]
dec_targ	33.559917	Observer's specified target Dec [deg]
ra_nom	166.5227510949	Nominal RA [deg]
dec_nom	33.553795148552	Nominal Dec [deg]
roll_nom	215.75251906513	Nominal Roll [deg]
revision	1	Processing version of data
ontime	9061.300069809	Sum of GTIs [s]
livetime	8942.9075135648	Livetime [s]
ontime0	9061.300069809	Sum of GTIs [s]
ontime1	9058.159029603	Sum of GTIs [s]
ontime2	9061.300069809	Sum of GTIs [s]
ontime3	9061.300069809	Sum of GTIs [s]
ontime7	9061.300069809	Sum of GTIs [s]
l2events	52589	Number of level 2 events



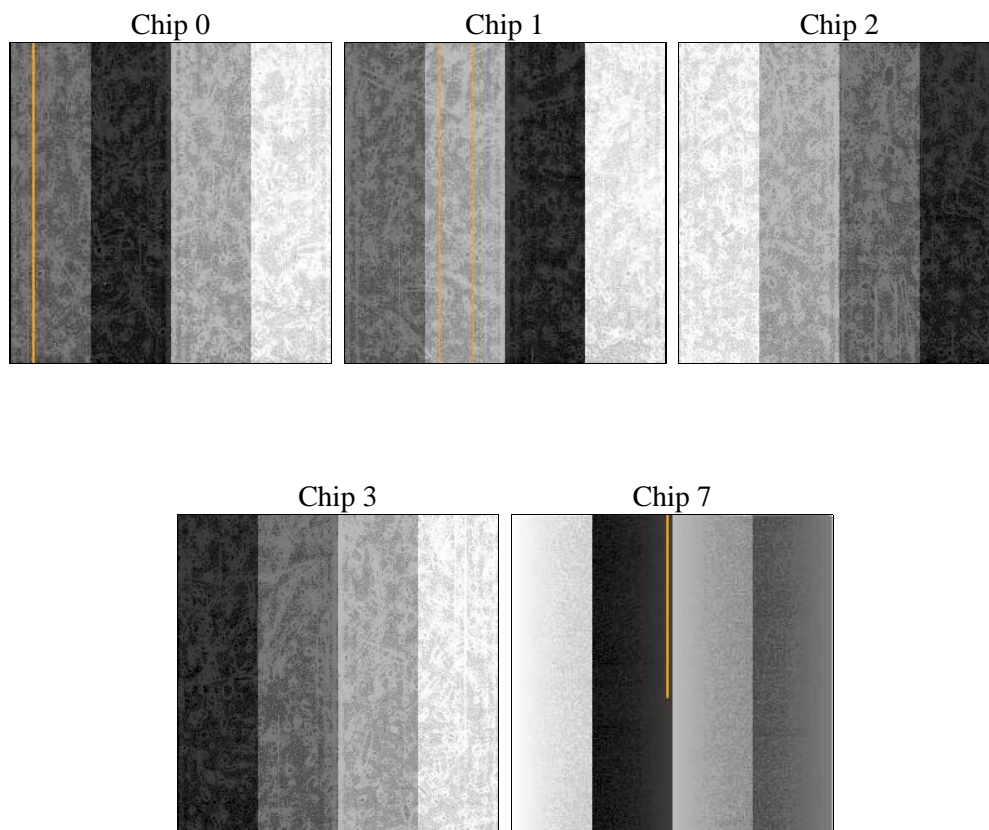
2 OBI

2.1 OBI

2.1.1 Images



2.1.2 Bias



2.1.3 Parameters

obi_num	2	Obi number	sched_exp_time	9000.000000	[s] Scheduled observation exposure time
ascdsver	10.4.3.1	Processing system revision	ontime	9061.300069809	Sum of GTIs [s]
caldsver	4.7.1	 	ontime0	9061.300069809	Sum of GTIs [s]
date	2016-04-01T19:26:11	Date and time of file creation	ontime1	9058.159029603	Sum of GTIs [s]
revision	1	Processing version of data	ontime2	9061.300069809	Sum of GTIs [s]
			ontime3	9061.300069809	Sum of GTIs [s]
			ontime7	9061.300069809	Sum of GTIs [s]
			l1events	288437	Number of level 1 events

2.1.4 Events

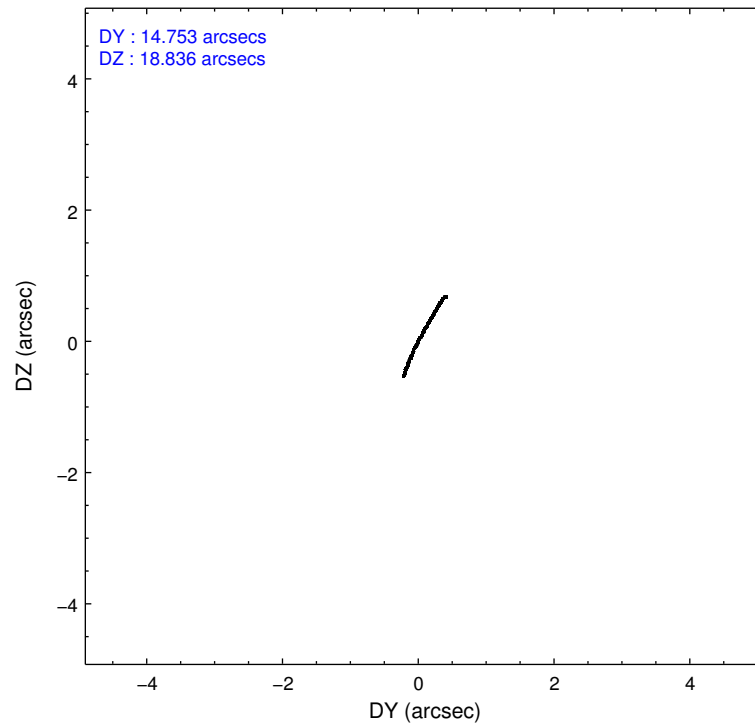
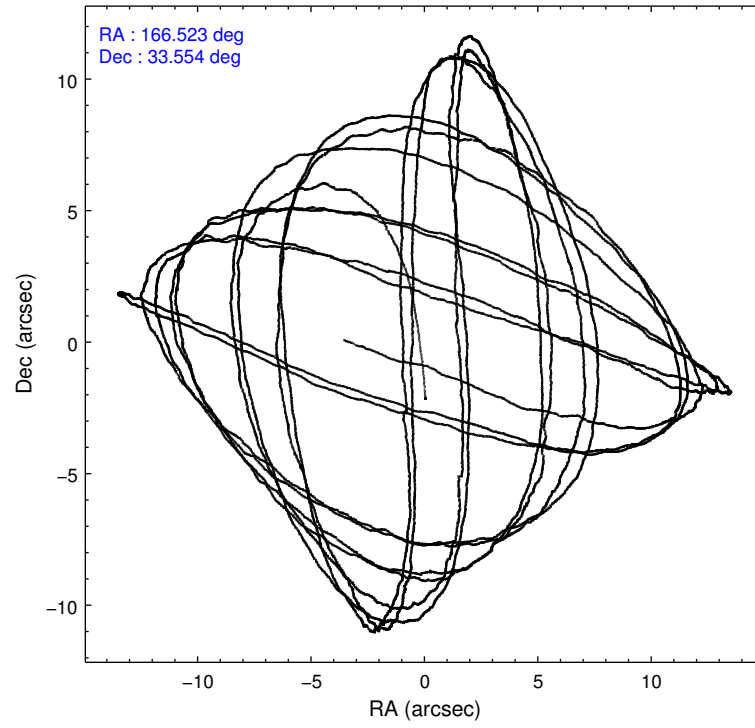
	ccd 0	ccd 1	ccd 2	ccd 3	ccd 7
level 1 events	51313	54684	55465	53152	73823
rejected events	44875	45965	49447	46865	42346
rejected %	87%	84%	89%	88%	57%

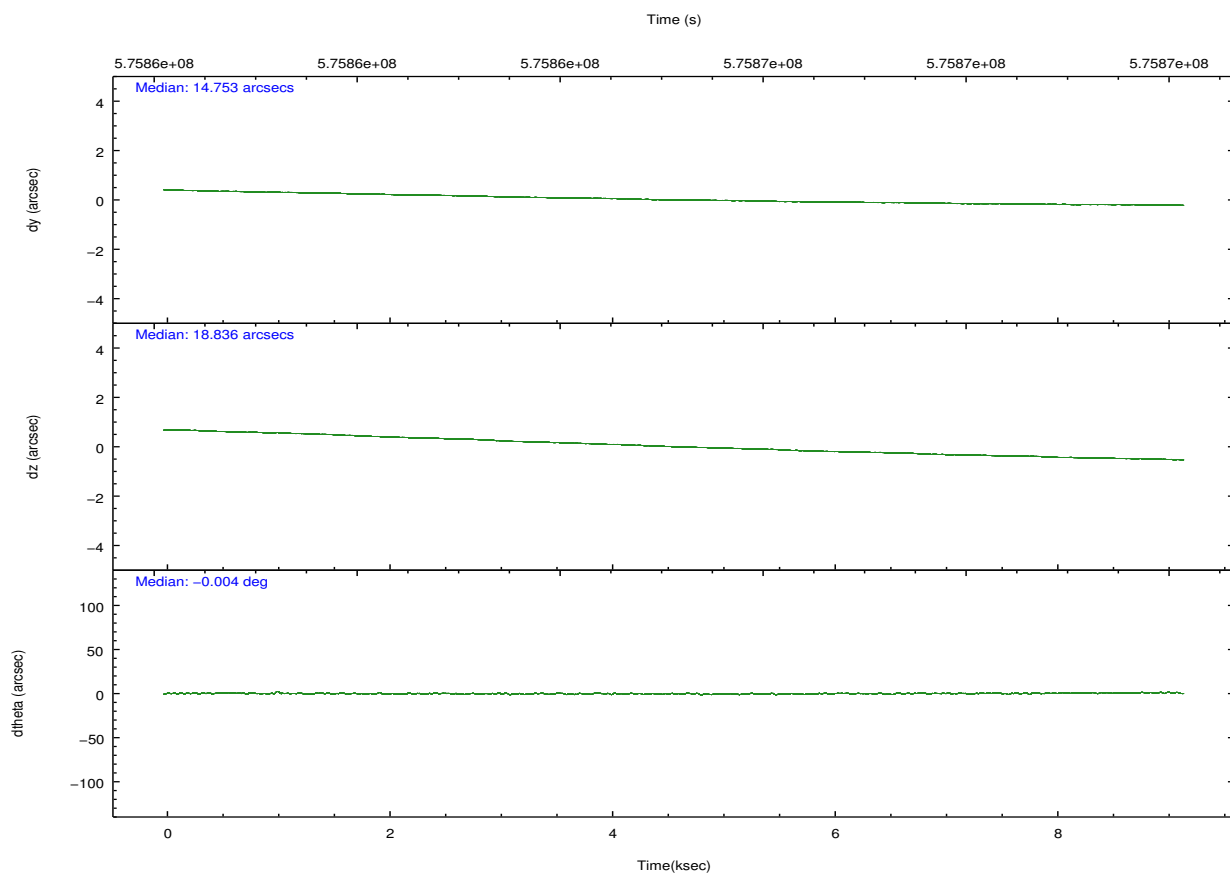
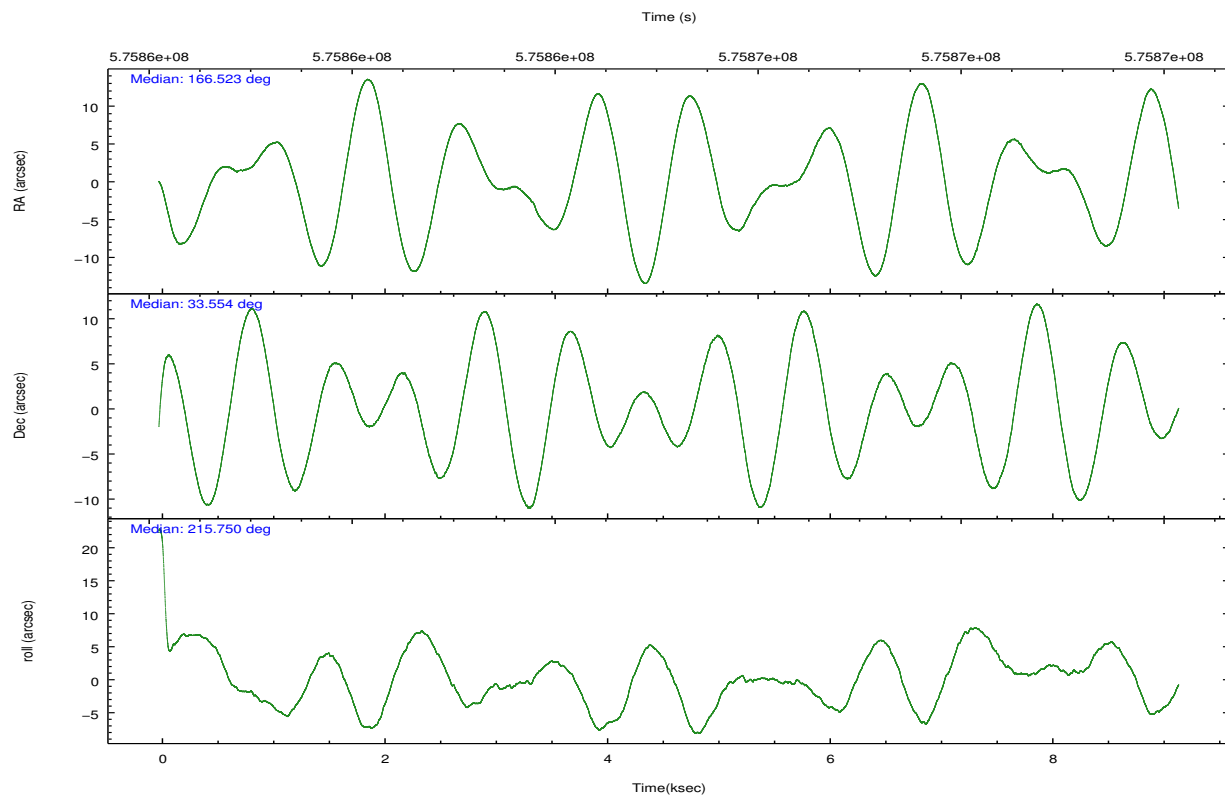
	ccd 0	ccd 1	ccd 2	ccd 3	ccd 7
grade 0 events	2319	3916	2161	2346	2638
	4%	7%	3%	4%	3%
grade 1 events	28	43	38	31	112
	0%	0%	0%	0%	0%
grade 2 events	1555	1830	1517	1420	6592
	3%	3%	2%	2%	8%
grade 3 events	678	680	594	607	2600
	1%	1%	1%	1%	3%
grade 4 events	617	687	603	653	2534
	1%	1%	1%	1%	3%
grade 5 events	2458	2567	2332	2767	7497
	4%	4%	4%	5%	10%
grade 6 events	1272	1613	1149	1264	17139
	2%	2%	2%	2%	23%
grade 7 events	42386	43348	47071	44064	34711
	82%	79%	84%	82%	47%

2.2 Compared Parameters

Parameter	Planned	Actual	Parameter	Planned	Actual
Instrument	ACIS	ACIS	Obspar format version number	7	7
Detector	ACIS-01237	ACIS-01237	Obspar file type	PREDICTED	ACTUAL
Grating	NONE	NONE	Obspar update status	NONE	UPDATED
Data mode	VFAINT	VFAINT	CCD I0 on	Y	Y
Observation mode	POINTING	POINTING	CCD I1 on	Y	Y
[deg] Pointing RA	166.536228	166.5227510949049	CCD I2 on	Y	Y
[deg] Pointing Dec	33.579029	33.55379514855238	CCD I3 on	Y	Y
[deg] Pointing Roll	215.536344	215.7525190651278	CCD S0 on	N	N
[mm] SIM focus pos	-0.782348	-0.7809083437167272	CCD S1 on	N	N
[mm] SIM defocus	0	0.001439871863259334	CCD S2 on	N	N
[mm] SIM translation stage pos	-233.592463	-233.5874344608287	CCD S3 on	O1	Y
[mm] SIM translation stage offset	0	-0.005018542100998502	CCD S4 on	N	N
[s] Observation start time (MET)	575860674.184000	575859700.02311	CCD S5 on	N	N
Observation start date	2016-04-01T01:16:46	2016-04-01T01:01:40	Number of optional ACIS chips dropped	0	0
[s] Observation end time (MET)	575869674.184000	575870363.61122	On-chip summing requested	N	N
Observation end date	2016-04-01T03:46:46	2016-04-01T03:59:23	Subarray requested	NONE	NONE
Read mode	TIMED	TIMED	Alternating exposures requested	N	N
			[s] Primary exposure time	0.000000	3.1

2.3 Aspect



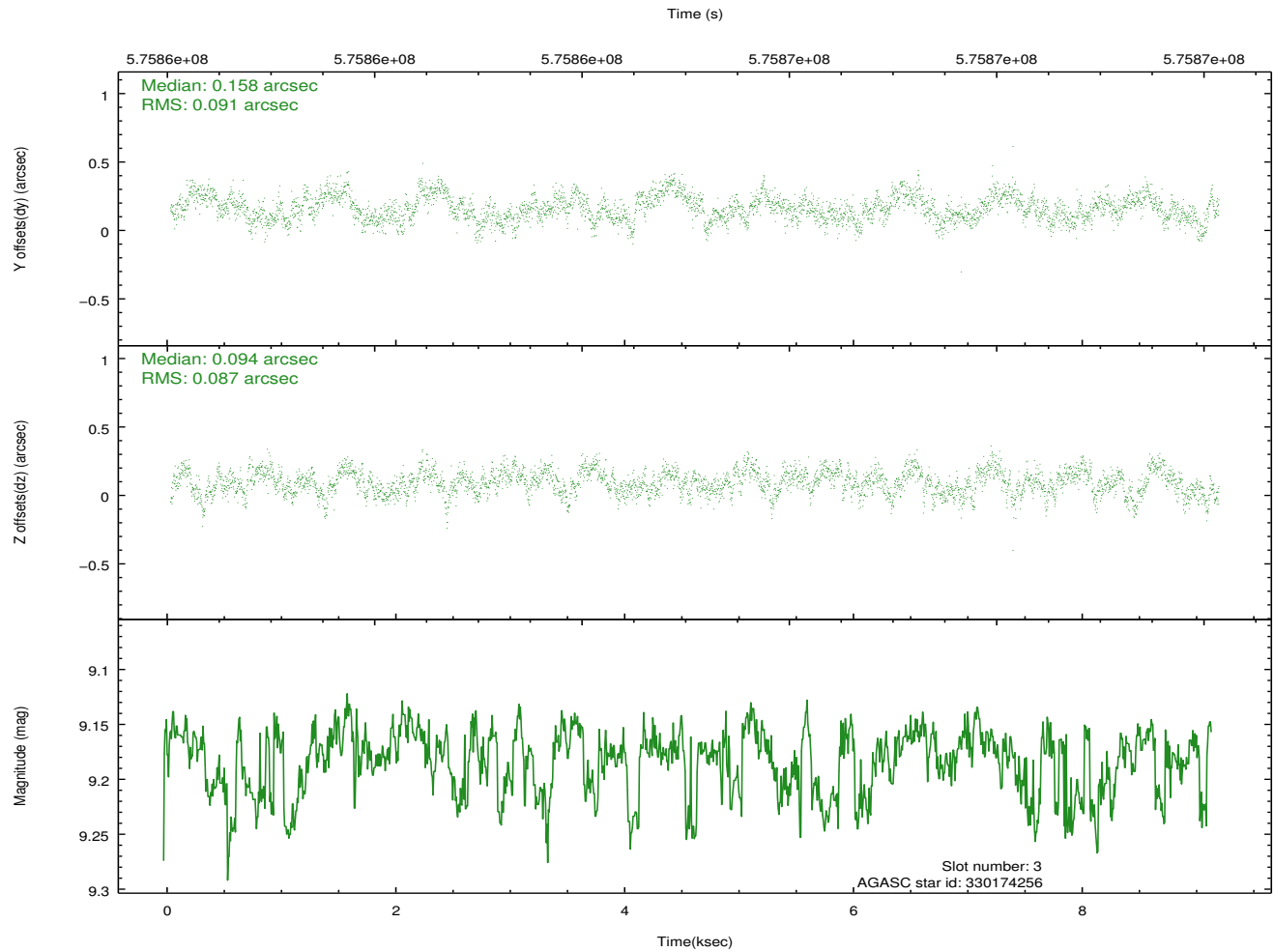
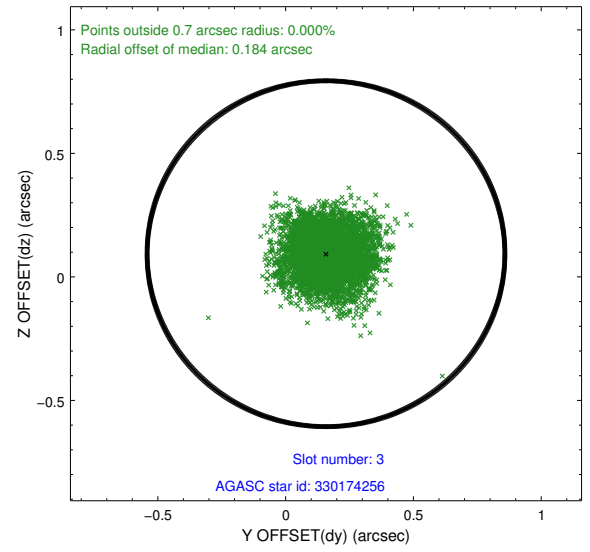
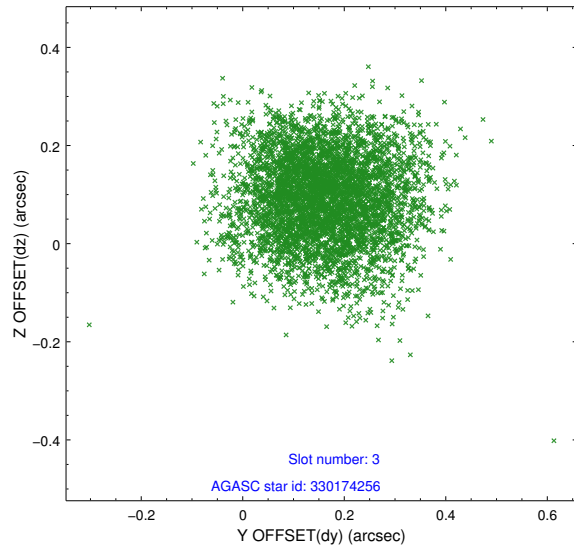


Slot Statistics

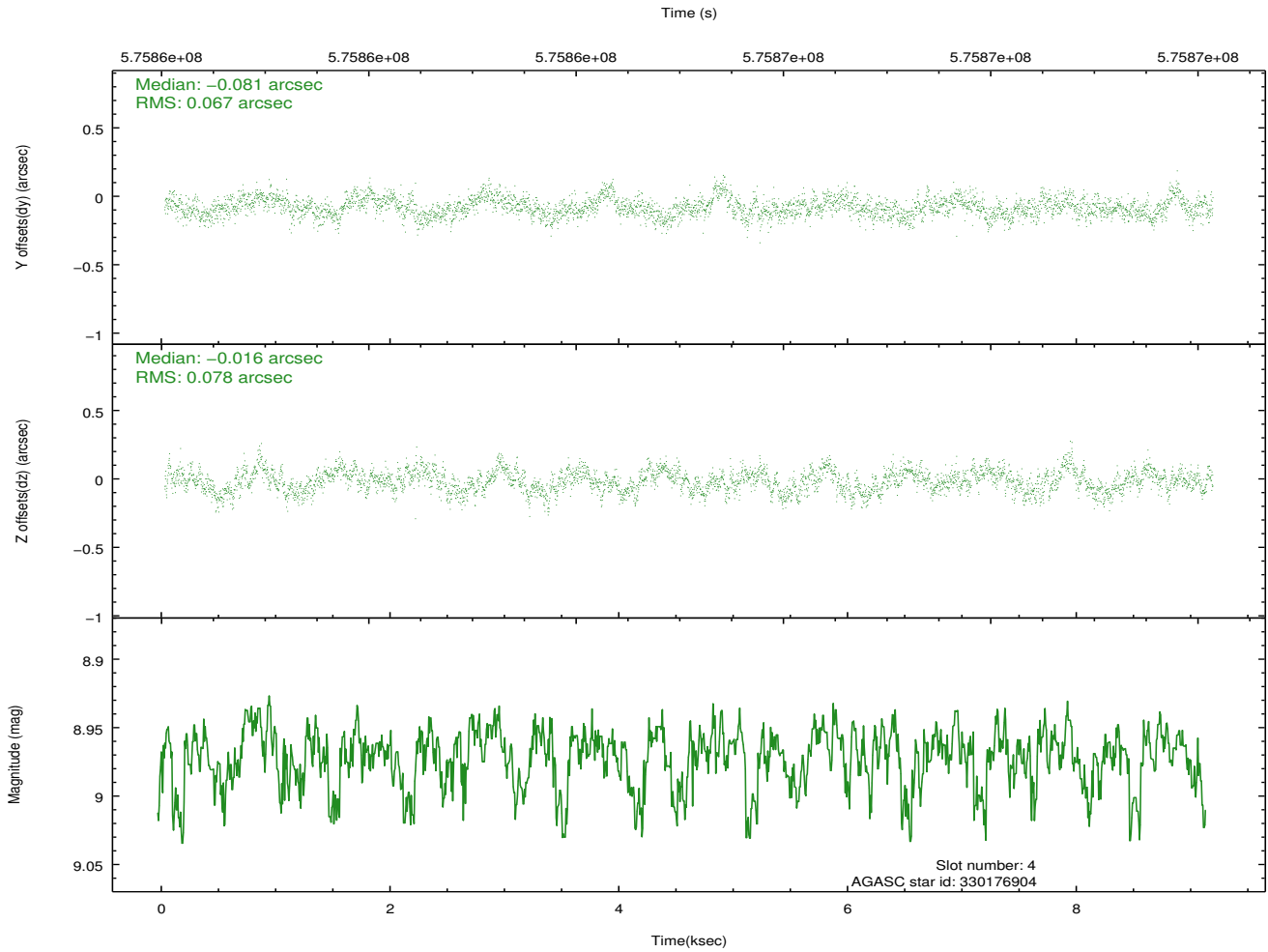
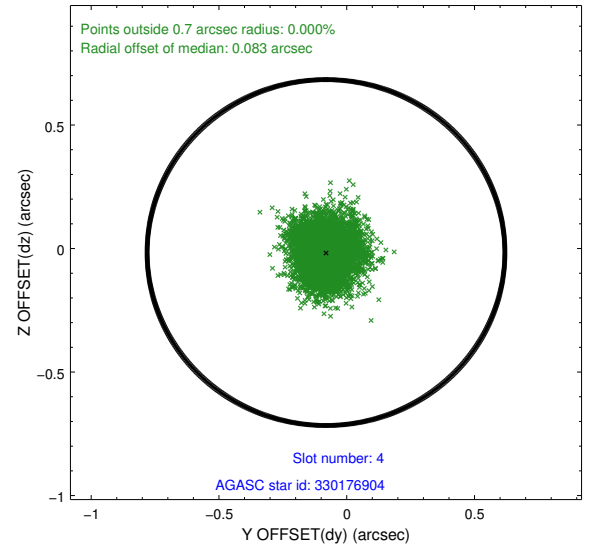
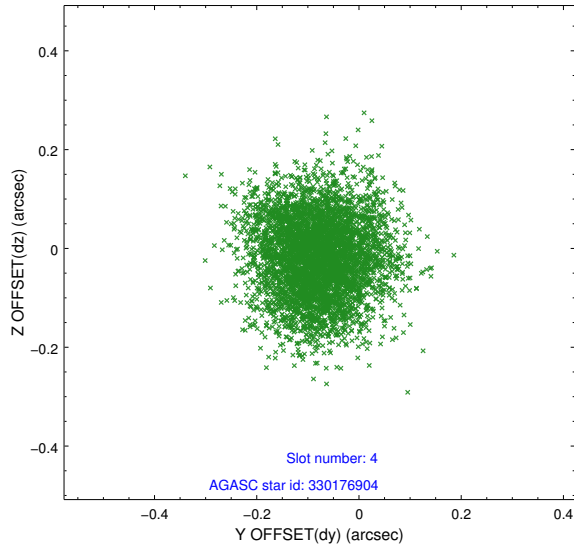
slot	status	used	id	mag	n_pts	med_dy	med_dz	dr1	dr2	ra	dec	mean_y	mean_z
0	FID		ACIS-I-1	7.25	2235	0.052	0.009	0.010	0.018	0.000000	0.000000	924.76	-842.53
1	FID		ACIS-I-5	7.26	2235	-0.325	0.029	0.007	0.012	0.000000	0.000000	-1823.48	1054.56
2	FID		ACIS-I-6	7.26	2234	0.182	0.031	0.011	0.021	0.000000	0.000000	389.68	1699.84
3	GUIDE	used	330174256	9.18	4468	0.158	0.094	0.135	0.215	166.094348	33.409236	1434.55	-276.47
4	GUIDE	used	330176904	8.97	4469	-0.081	-0.016	0.110	0.177	166.128419	32.995523	2223.59	991.79
5	GUIDE	used	330177232	9.57	4406	0.051	0.120	0.151	0.257	166.259741	32.852347	2200.92	1642.56
6	GUIDE	used	330178584	9.34	4459	-0.070	-0.195	0.137	0.239	166.001128	33.145760	2217.87	329.24
7	GUIDE	used	330572656	8.94	4466	-0.072	0.001	0.140	0.211	167.170618	33.871957	-2158.74	239.35

2.4 Star Slots

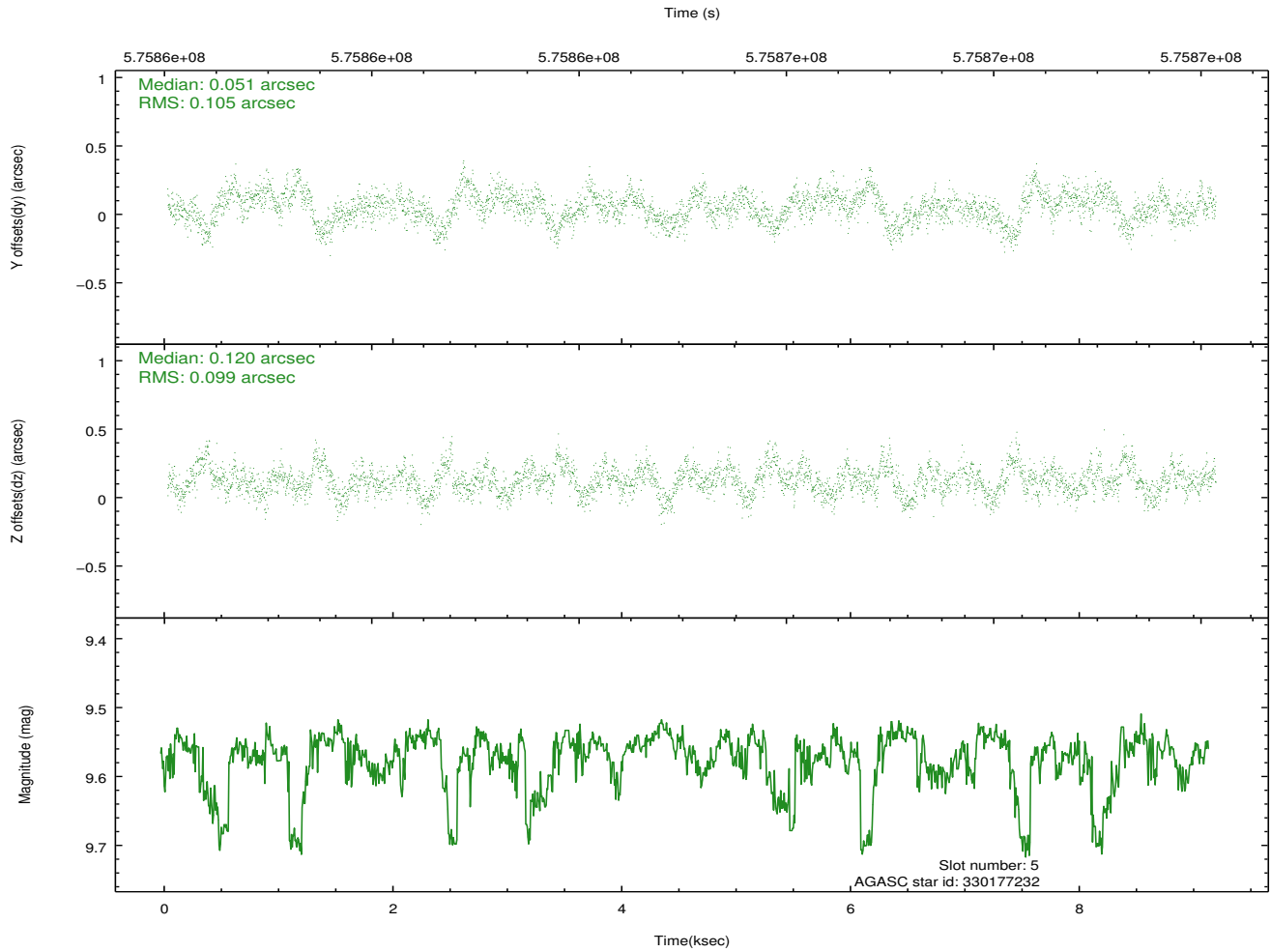
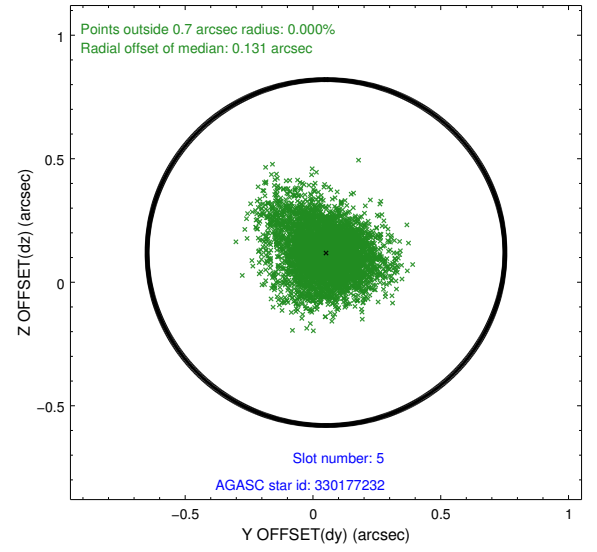
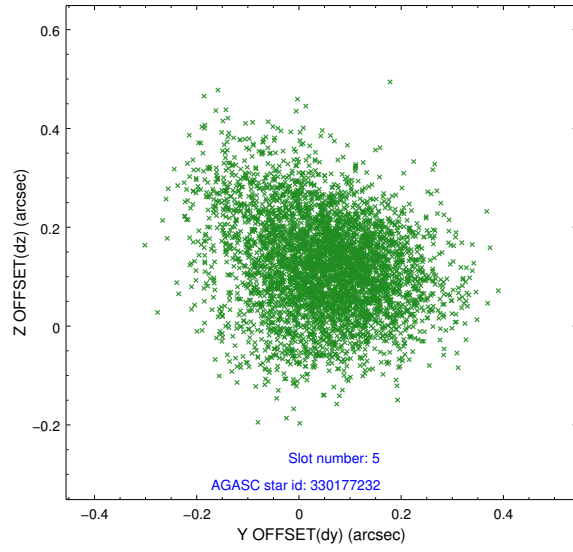
2.4.1 Slot 3



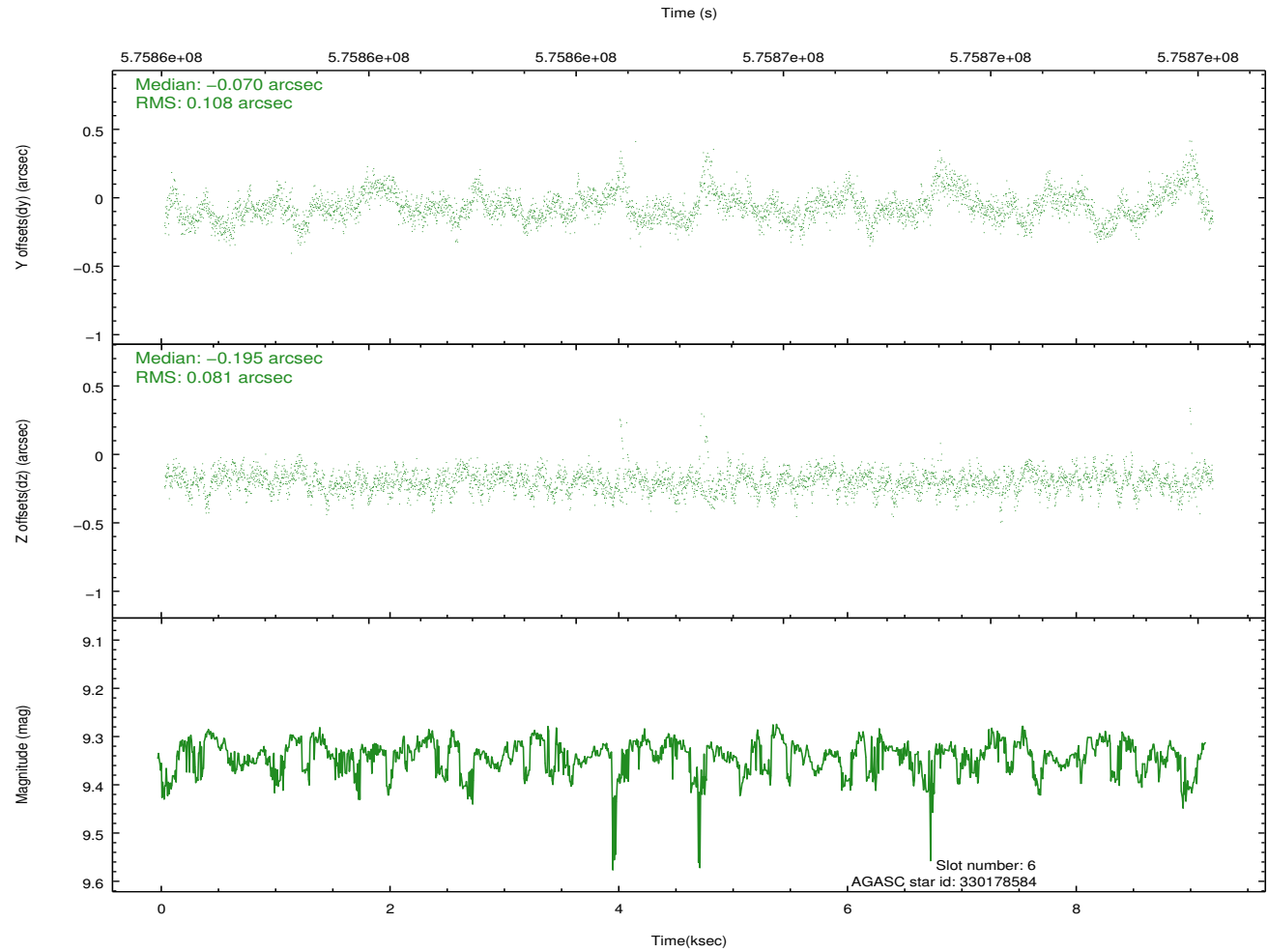
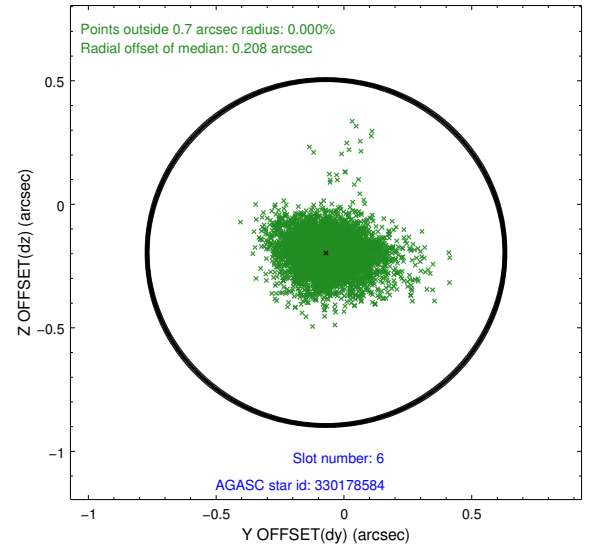
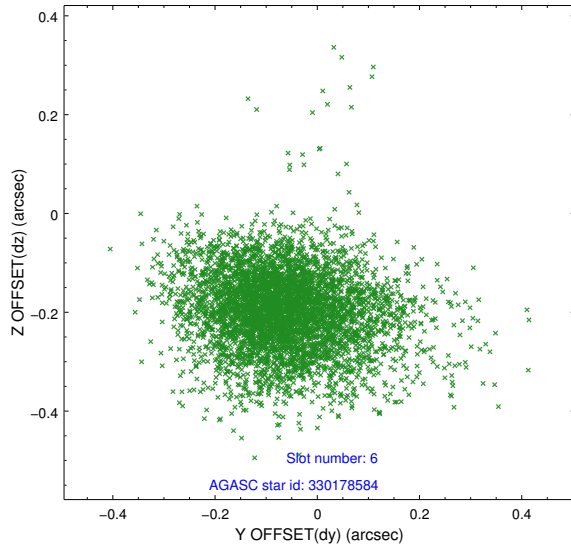
2.4.2 Slot 4



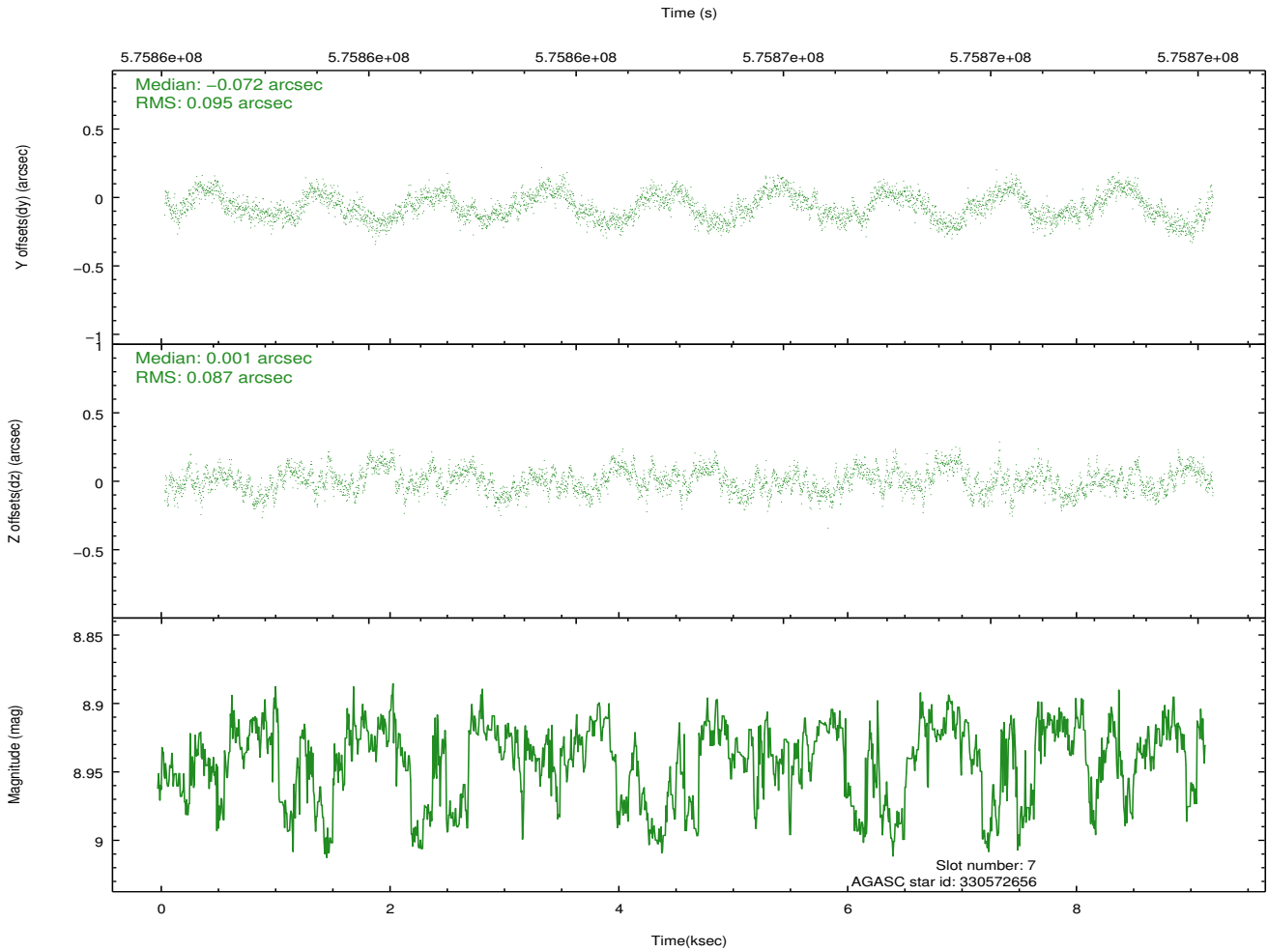
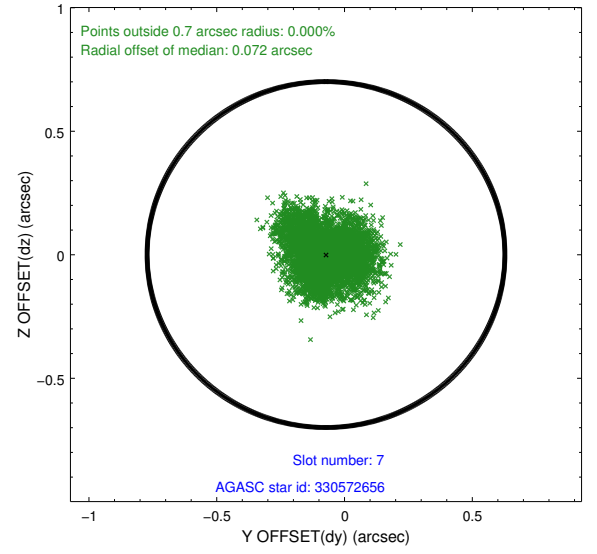
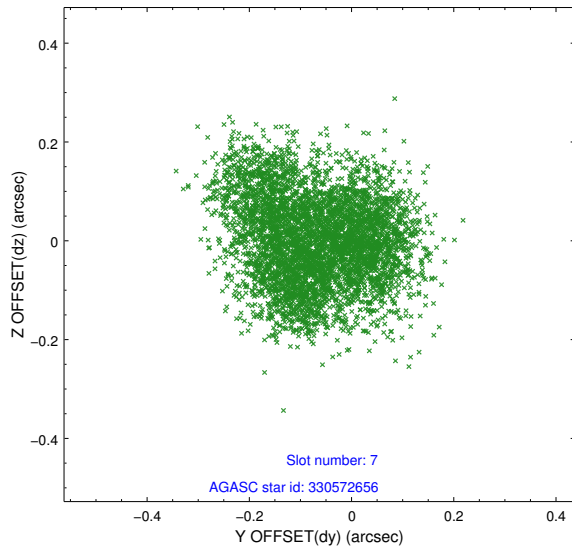
2.4.3 Slot 5



2.4.4 Slot 6

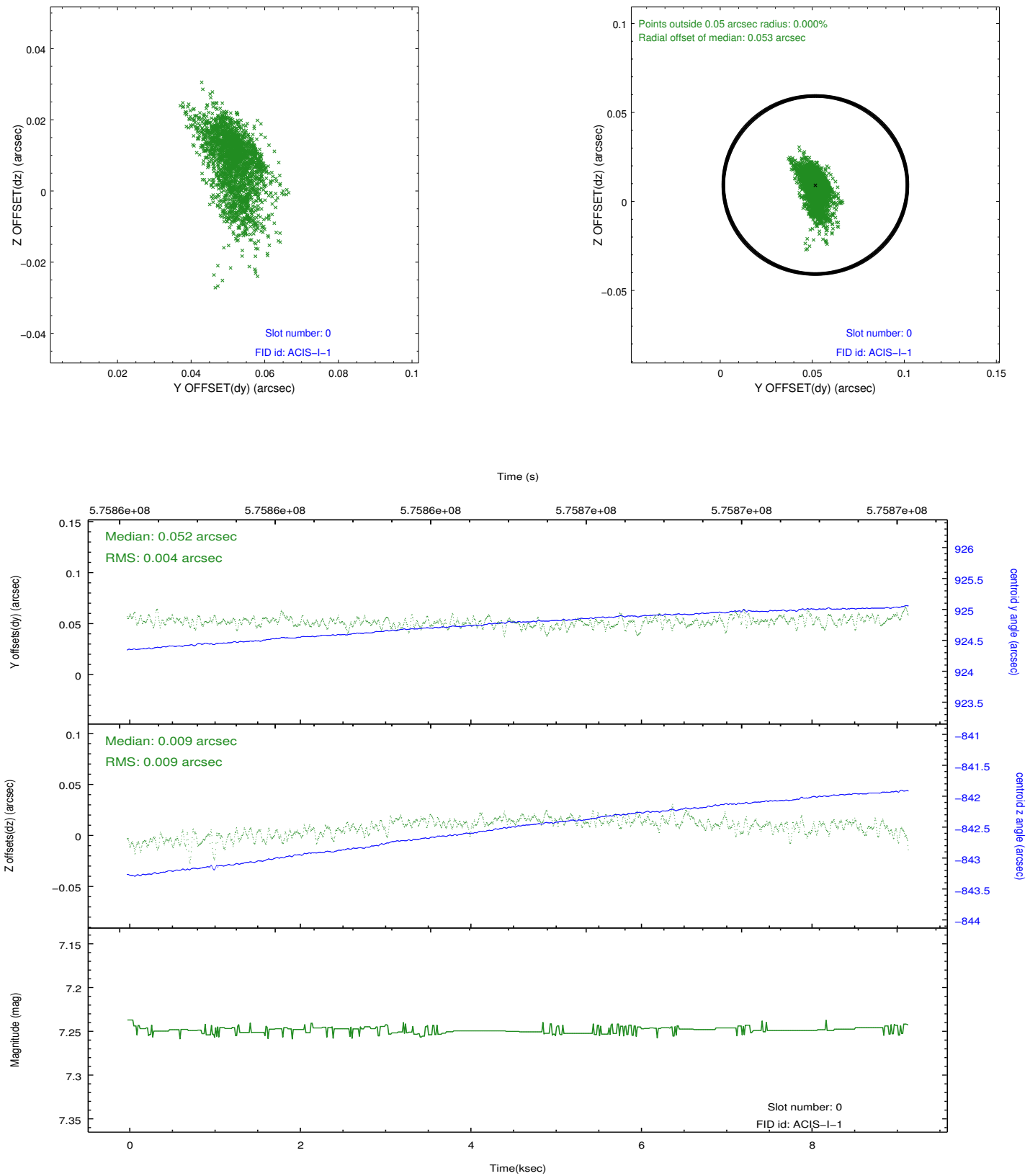


2.4.5 Slot 7

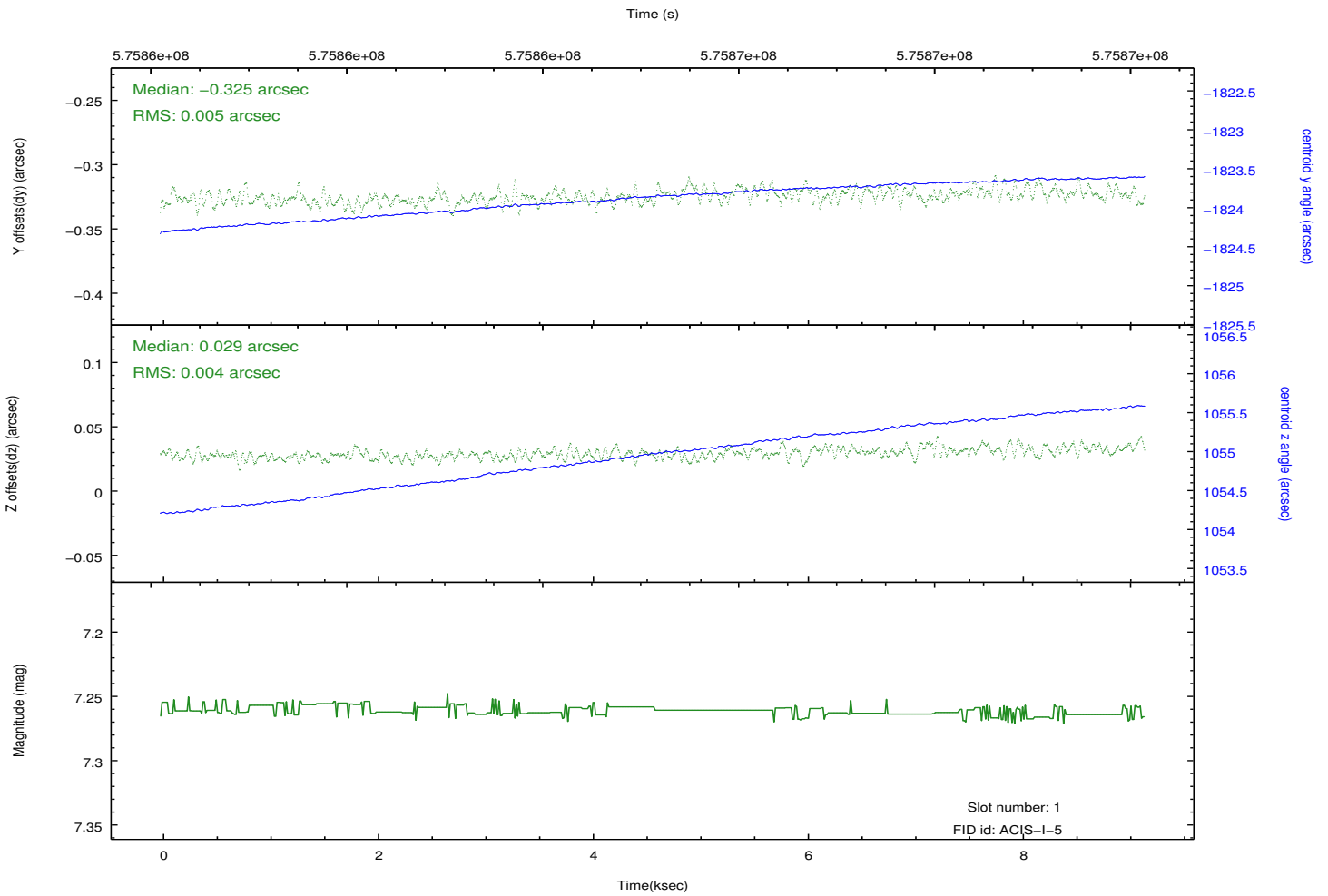
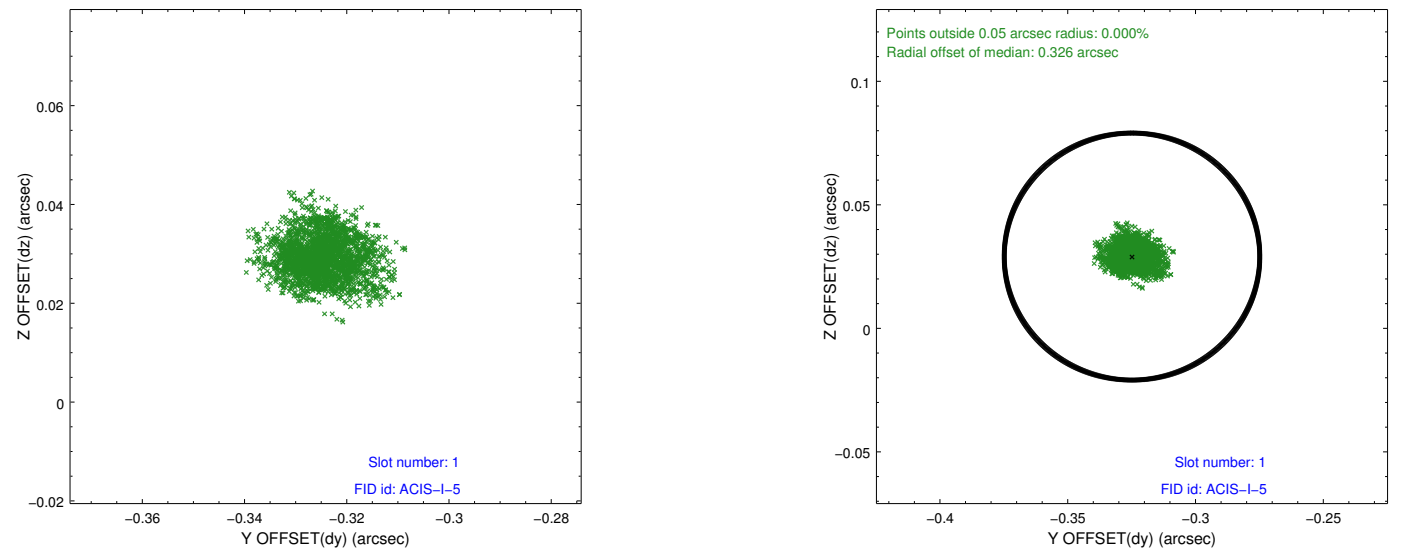


2.5 FID Slots

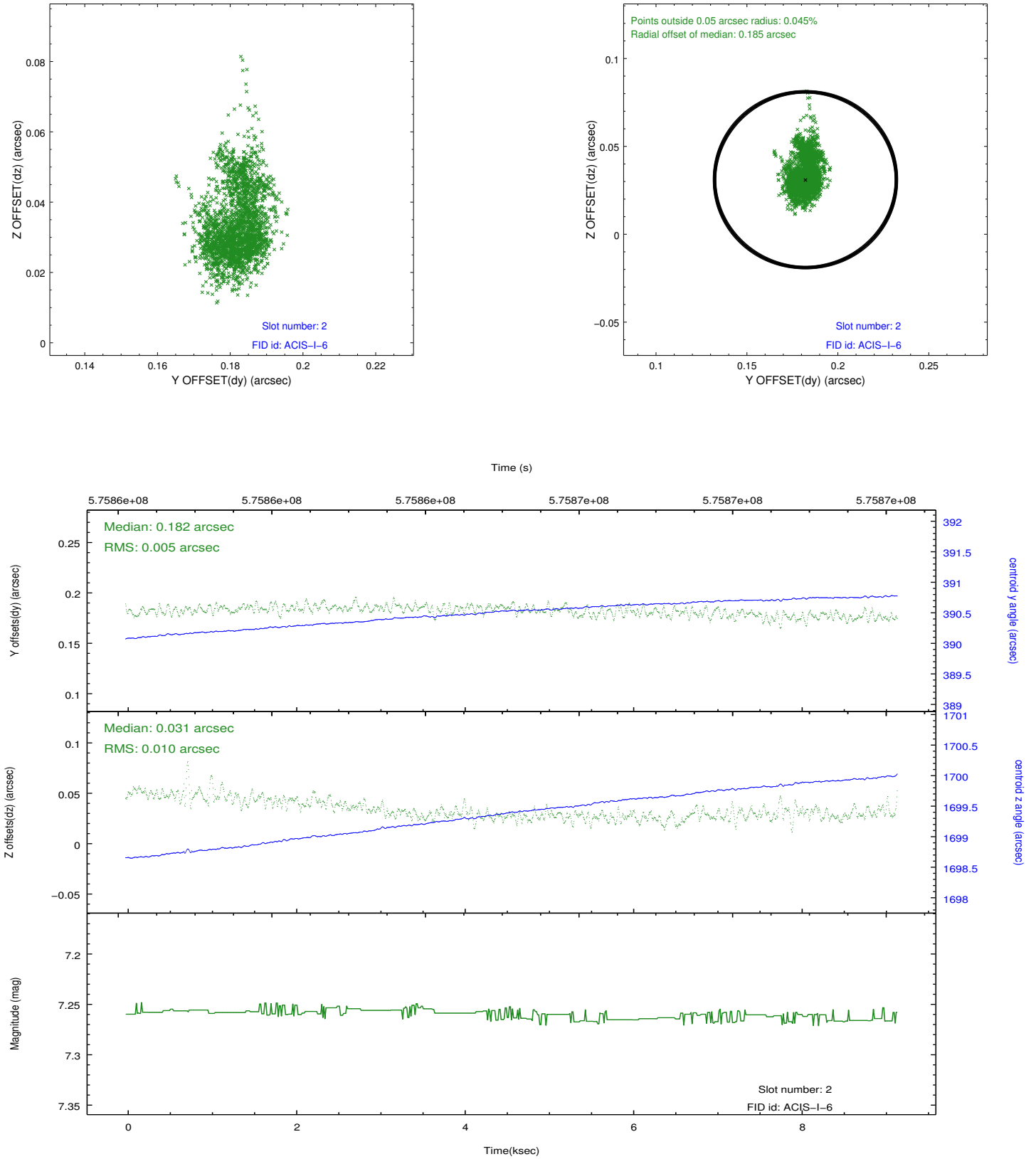
2.5.1 Slot 0



2.5.2 Slot 1



2.5.3 Slot 2



A Summary

A.1 Status

V&V Scientist	Joy Nichols
V&V Date (YYYY-MM-DD)	2016.04.04
V&V Edition	1
V&V Disposition and Status	OK
V&V Charge Time	9.061300069809

A.2 Comments