

V&V Reference Report

L2 ASCDS Version : 10.4.3

Observation 18293 - L2 Version 1
Chandra X-Ray Center

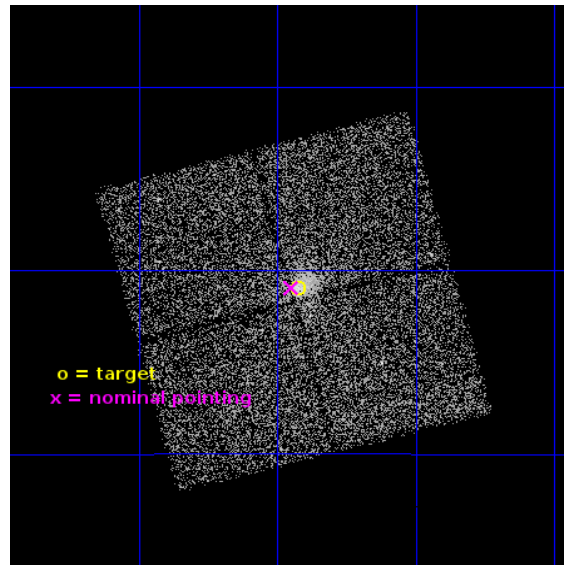
L2 Processing Date : Jan 5 2016

Contents

1	Front	2
2	OBI	3
2.1	OBI	3
2.1.1	Images	3
2.1.2	Bias	3
2.1.3	Parameters	4
2.1.4	Events	4
2.2	Compared Parameters	5
2.3	Aspect	6
2.4	Star Slots	9
2.4.1	Slot 3	9
2.4.2	Slot 4	10
2.4.3	Slot 5	11
2.4.4	Slot 6	12
2.4.5	Slot 7	13
2.5	FID Slots	14
2.5.1	Slot 0	14
2.5.2	Slot 1	15
2.5.3	Slot 2	16
A	Summary	17
A.1	Status	17
A.2	Comments	17

1 Front

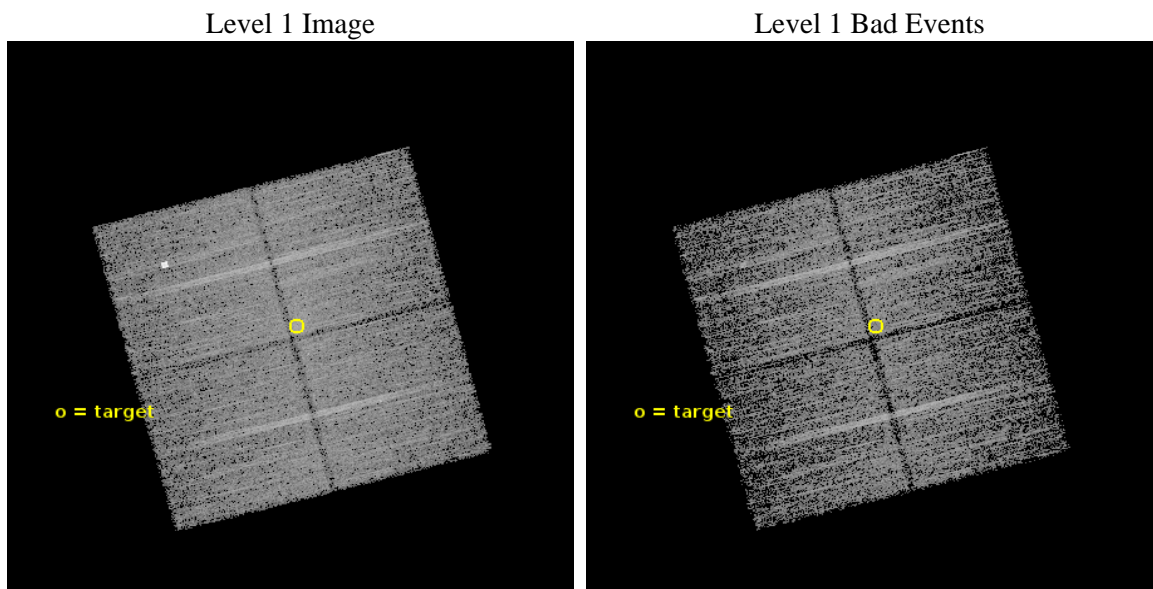
seq_num	801611	Sequence number
obs_id	18293	Observation id
title	Building a Cheap and Cheerful SZ-selected sample of galaxy clusters with the Planck Catalogue.	Proposal title
observer	Dr Mariachiara Rossetti	Principal investigator
object	PSZ2 G224.01-11.14	Source name
dtcycle	0	
cycle	P	events from which exps? Prim/Second/Both
ra_targ	97.73042	Observer's specified target RA [deg]
dec_targ	-14.85	Observer's specified target Dec [deg]
ra_nom	97.737138198095	Nominal RA [deg]
dec_nom	-14.84914648756	Nominal Dec [deg]
roll_nom	345.21039948307	Nominal Roll [deg]
revision	1	Processing version of data
ontime	13084.601913333	Sum of GTIs [s]
livetime	12913.641956591	Livetime [s]
ontime0	13084.478793383	Sum of GTIs [s]
ontime1	13084.519833326	Sum of GTIs [s]
ontime2	13084.560873389	Sum of GTIs [s]
ontime3	13084.601913333	Sum of GTIs [s]
l2events	29671	Number of level 2 events



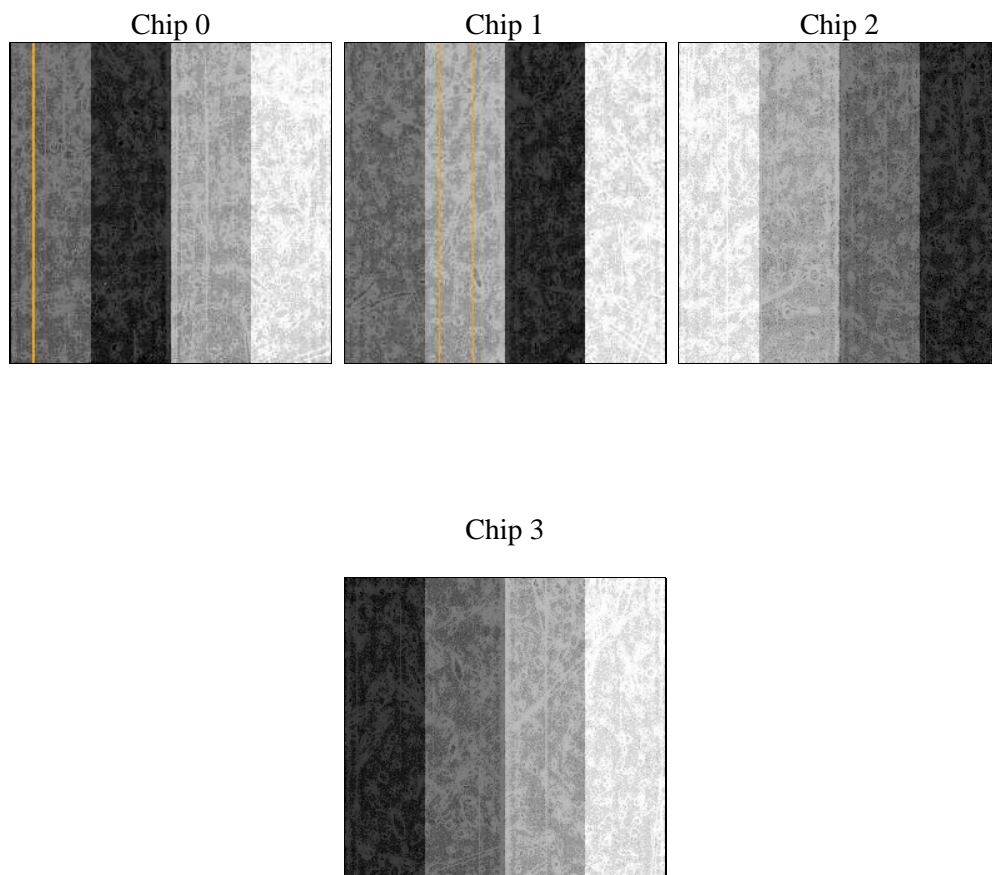
2 OBI

2.1 OBI

2.1.1 Images



2.1.2 Bias



2.1.3 Parameters

obi_num	0	Obi number	sched_exp_time	13000.000000	[s] Scheduled observation exposure time
ascdsver	10.4.3	Processing system revision	ontime	13084.601913333	Sum of GTIs [s]
caldsver	4.7.0	 	ontime0	13084.478793383	Sum of GTIs [s]
date	2016-01-05T11:55:08	Date and time of file creation	ontime1	13084.519833326	Sum of GTIs [s]
revision	1	Processing version of data	ontime2	13084.560873389	Sum of GTIs [s]
			ontime3	13084.601913333	Sum of GTIs [s]
			l1events	295786	Number of level 1 events

2.1.4 Events

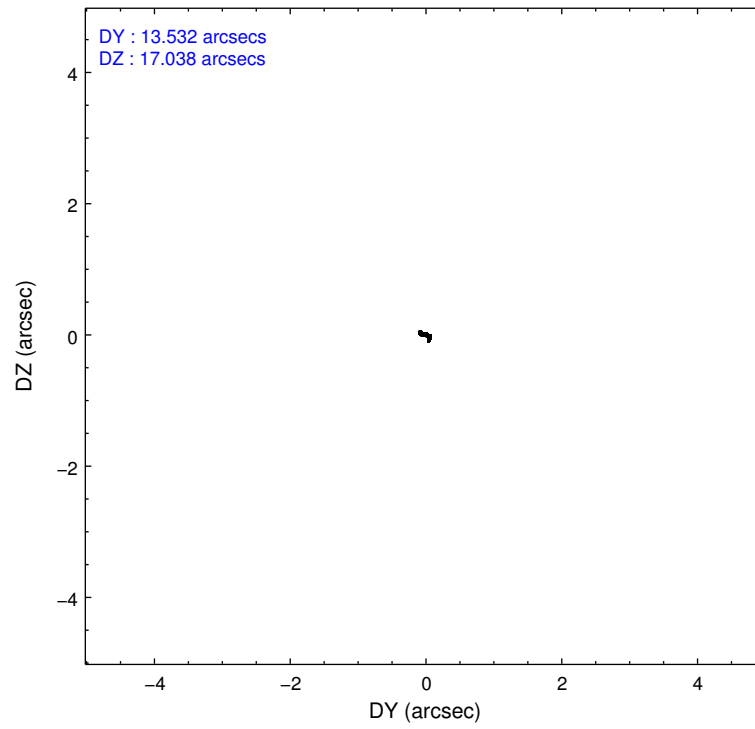
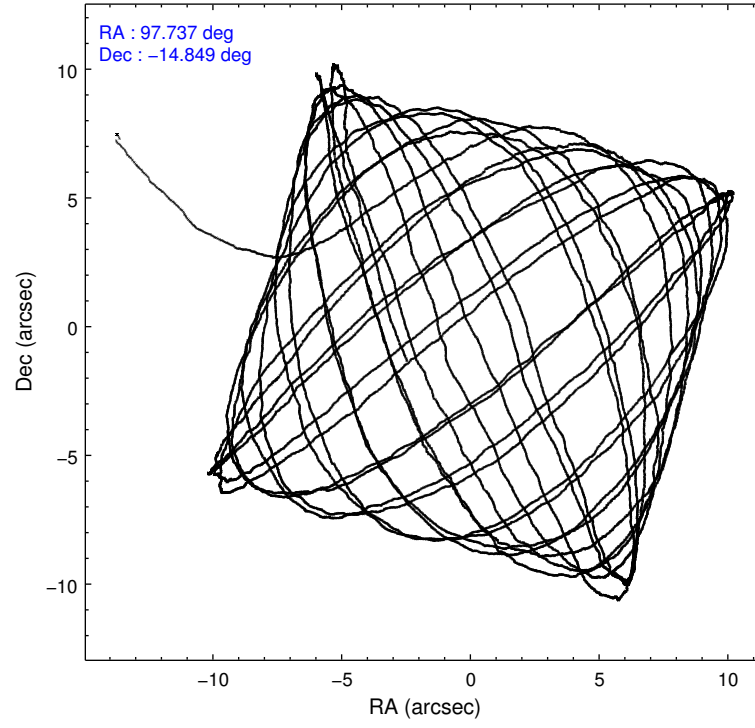
	ccd 0	ccd 1	ccd 2	ccd 3
level 1 events	68856	71087	79415	76428
rejected events	60390	61872	67210	67520
rejected %	87%	87%	84%	88%

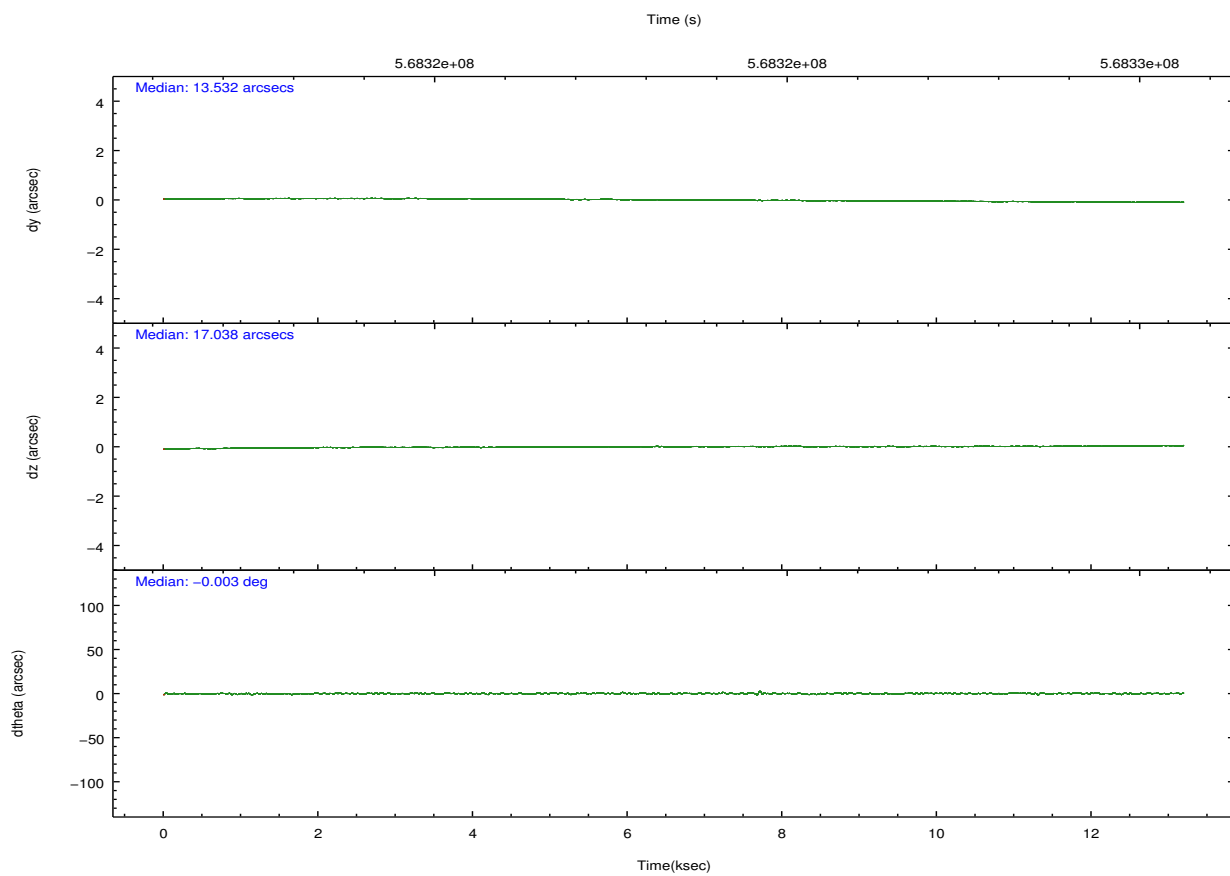
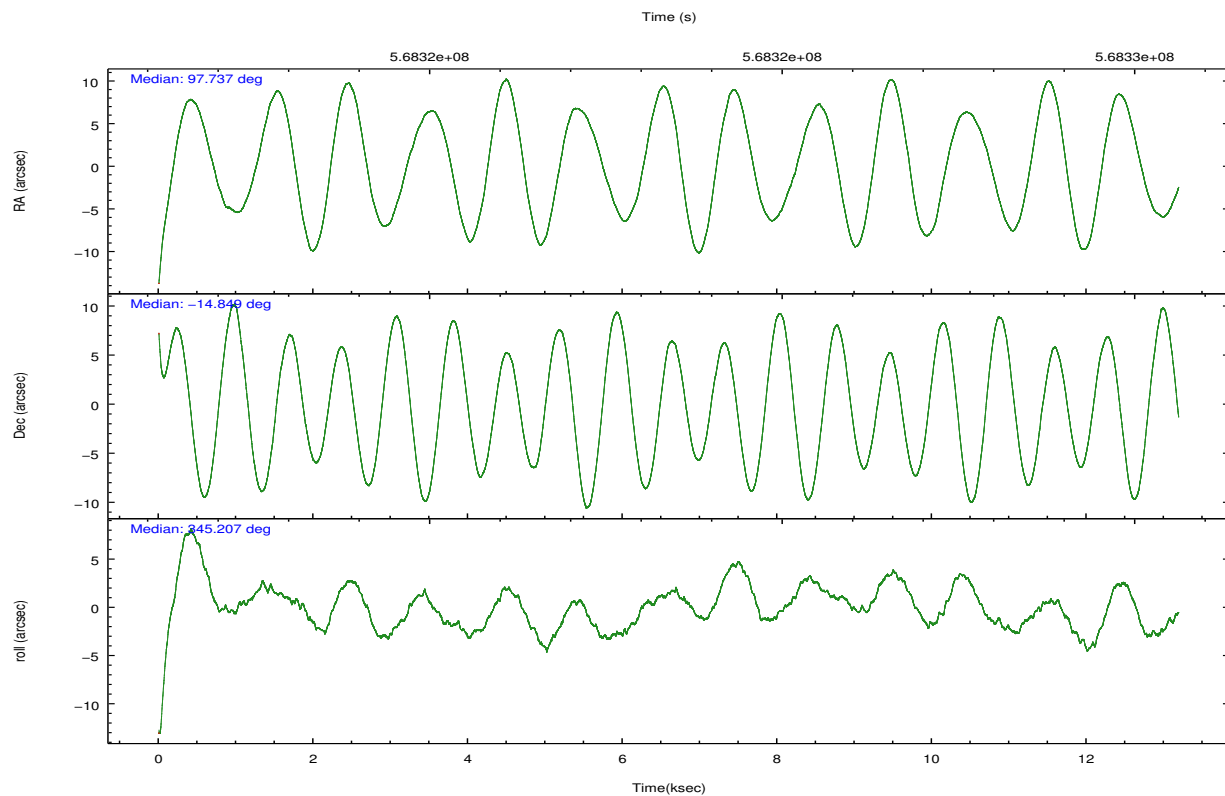
	ccd 0	ccd 1	ccd 2	ccd 3
grade 0 events	2861	3110	3024	3586
	4%	4%	3%	4%
grade 1 events	32	31	42	58
	0%	0%	0%	0%
grade 2 events	2025	2171	5821	1824
	2%	3%	7%	2%
grade 3 events	888	844	842	875
	1%	1%	1%	1%
grade 4 events	833	859	814	913
	1%	1%	1%	1%
grade 5 events	3281	3324	3132	3665
	4%	4%	3%	4%
grade 6 events	1861	2232	1705	1711
	2%	3%	2%	2%
grade 7 events	57075	58516	64035	63796
	82%	82%	80%	83%

2.2 Compared Parameters

Parameter	Planned	Actual	Parameter	Planned	Actual
Instrument	ACIS	ACIS	Obspar format version number	7	7
Detector	ACIS-0123	ACIS-0123	Obspar file type	PREDICTED	ACTUAL
Grating	NONE	NONE	Obspar update status	NONE	UPDATED
Data mode	VFAINT	VFAINT	Number of optional ACIS chips dropped	0	0
Observation mode	POINTING	POINTING	On-chip summing requested	N	N
[deg] Pointing RA	97.709627	97.73713819809527	Subarray requested	NONE	NONE
[deg] Pointing Dec	-14.856541	-14.84914648755954	Alternating exposures requested	N	N
[deg] Pointing Roll	344.994662	345.2103994830655	[s] Primary exposure time	0.000000	3.1
[mm] SIM focus pos	-0.782348	-0.7809083437167272			
[mm] SIM defocus	0	0.001439871863259334			
[mm] SIM translation stage pos	-233.592463	-233.5874344608287			
[mm] SIM translation stage offset	0	-0.005018542100998502			
[s] Observation start time (MET)	568316999.184000	568315899.53318			
Observation start date	2016-01-04T17:48:51	2016-01-04T17:31:39			
[s] Observation end time (MET)	568329999.184000	568331122.83404			
Observation end date	2016-01-04T21:25:31	2016-01-04T21:45:22			
Read mode	TIMED	TIMED			

2.3 Aspect



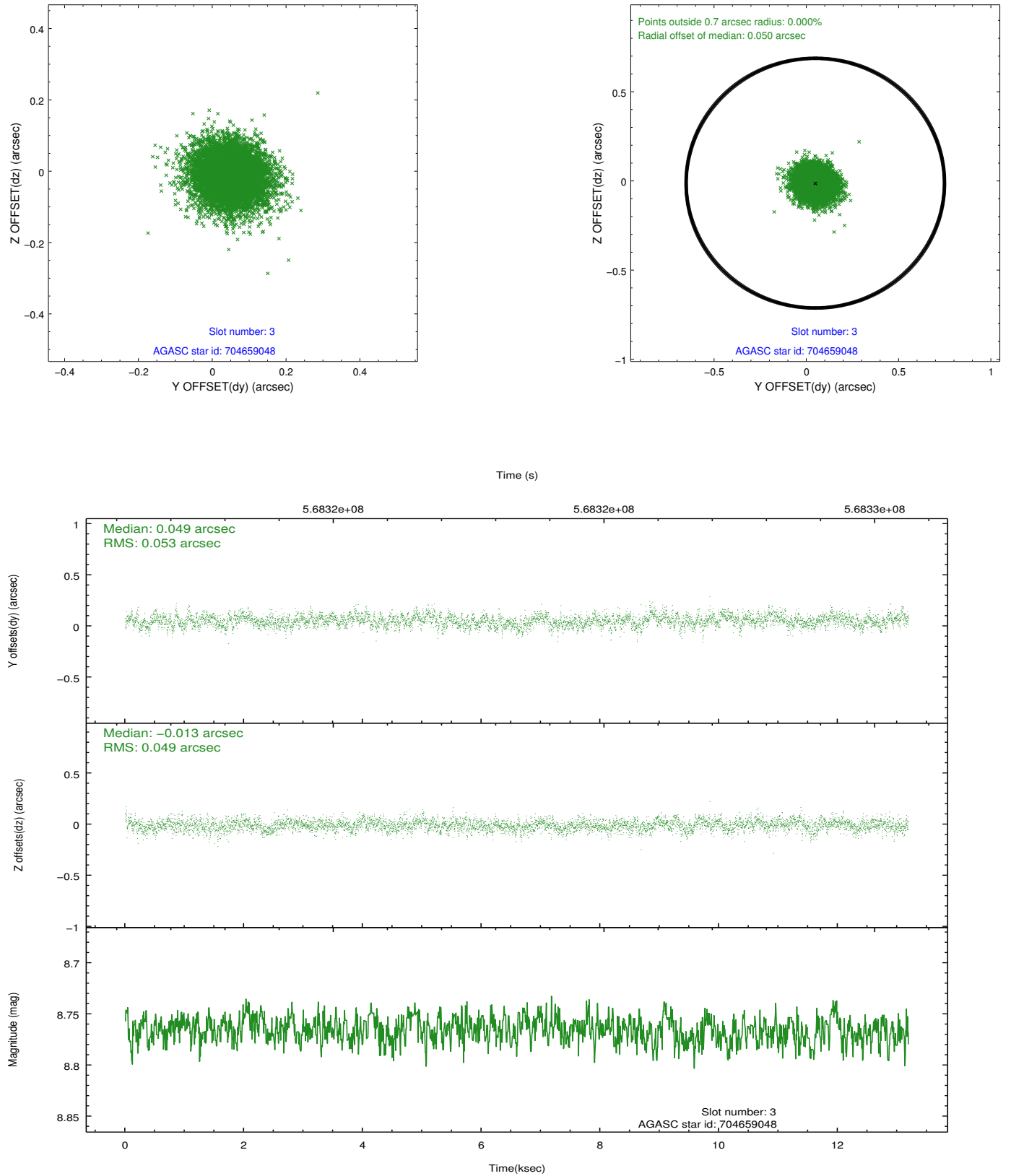


Slot Statistics

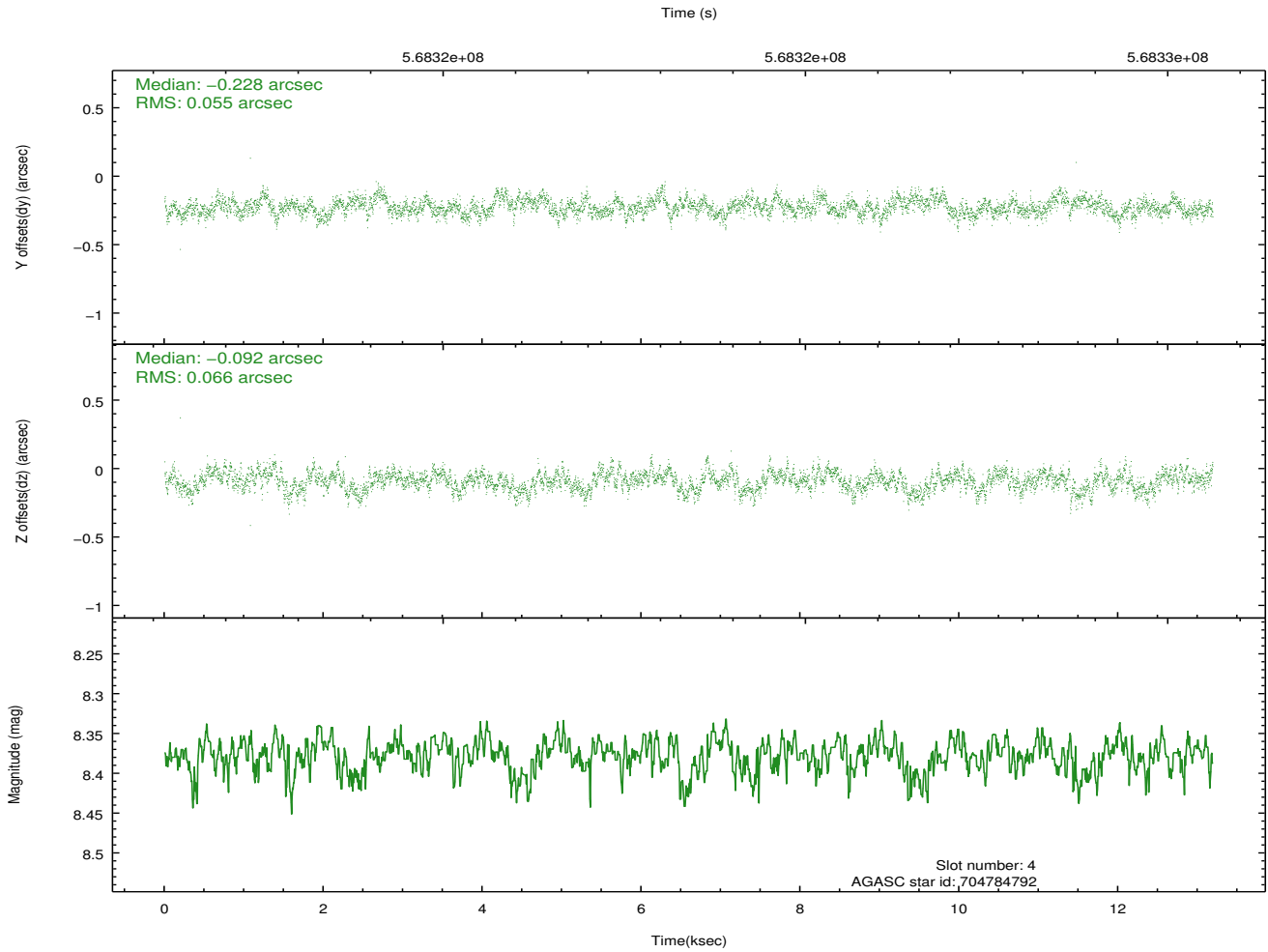
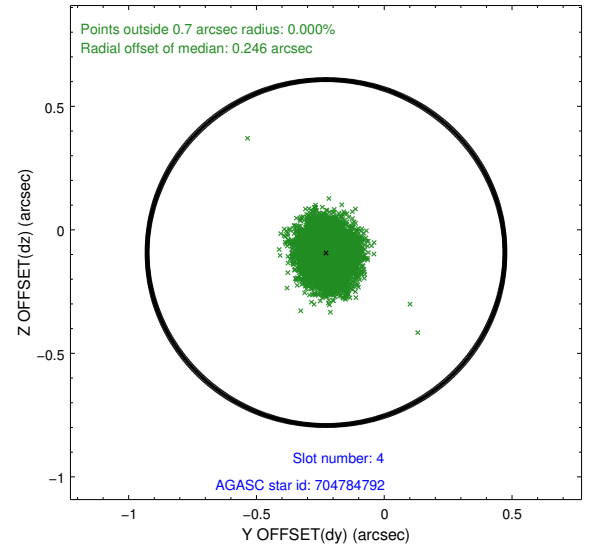
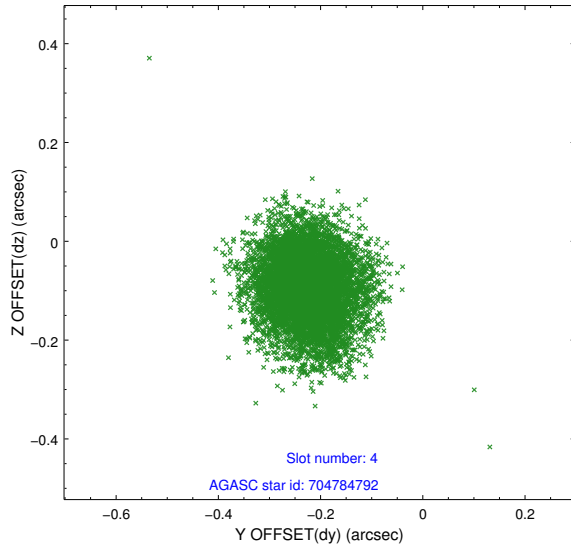
slot	status	used	id	mag	n_pts	med_dy	med_dz	dr1	dr2	ra	dec	mean_y	mean_z
0	FID		ACIS-I-1	7.27	3218	0.090	-0.077	0.006	0.011	0.000000	0.000000	926.07	-840.75
1	FID		ACIS-I-5	7.28	3218	-0.307	0.058	0.006	0.010	0.000000	0.000000	-1822.25	1056.66
2	FID		ACIS-I-6	7.26	3218	0.126	0.089	0.007	0.011	0.000000	0.000000	391.23	1701.63
3	GUIDE	used	704659048	8.77	6433	0.049	-0.013	0.077	0.126	97.313792	-14.357786	-1797.49	1375.53
4	GUIDE	used	704784792	8.38	6432	-0.228	-0.092	0.092	0.148	98.067171	-14.521586	891.48	1486.35
5	GUIDE	used	704787368	8.16	6434	-0.049	-0.200	0.091	0.144	98.325414	-14.814224	2032.00	698.97
6	GUIDE	used	779498560	7.92	6434	-0.186	0.245	0.086	0.145	96.903576	-15.306152	-2282.29	-2292.95
7	GUIDE	used	779626024	9.20	6424	0.418	0.060	0.140	0.247	98.165310	-15.674097	2289.00	-2435.81

2.4 Star Slots

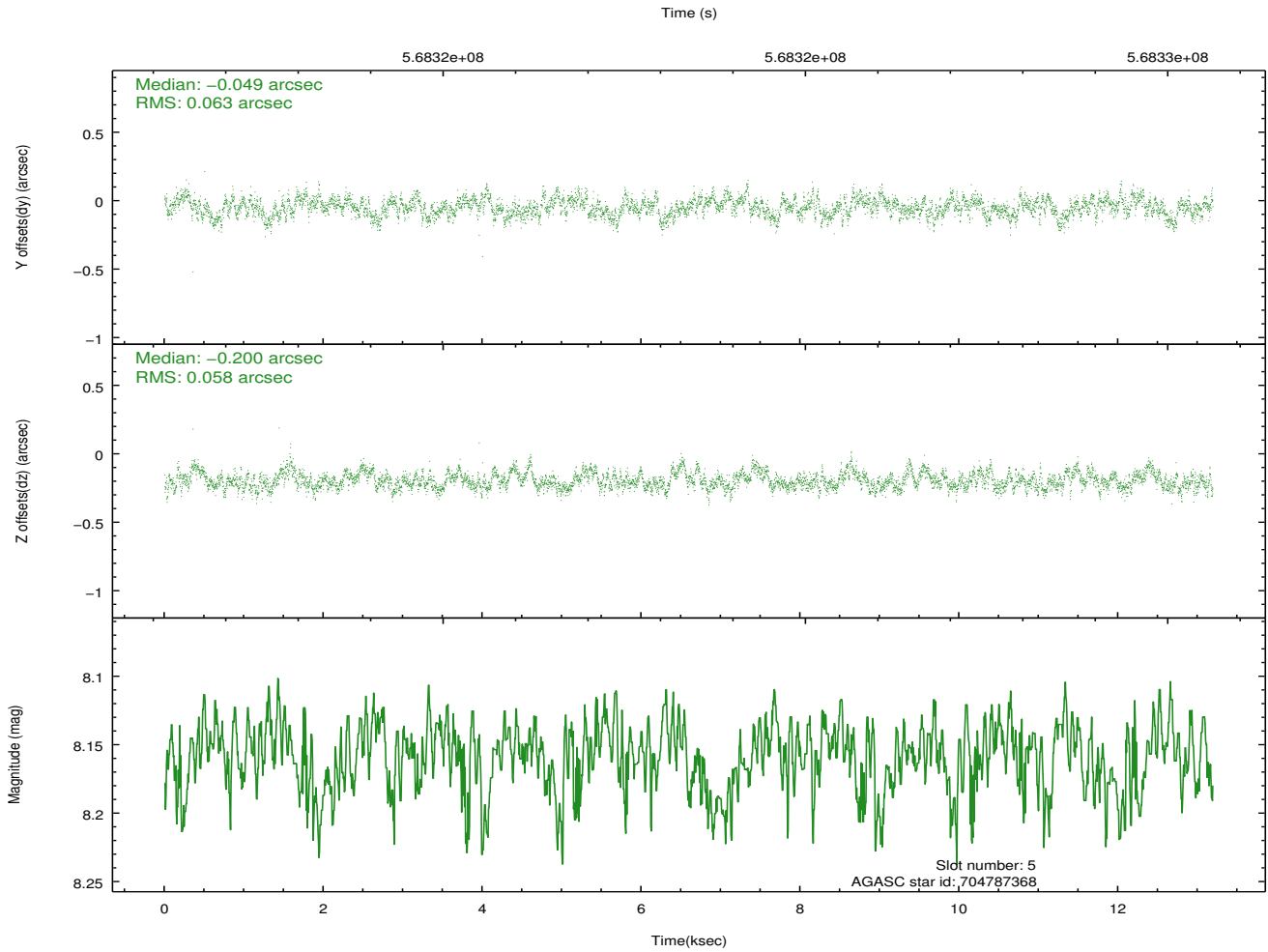
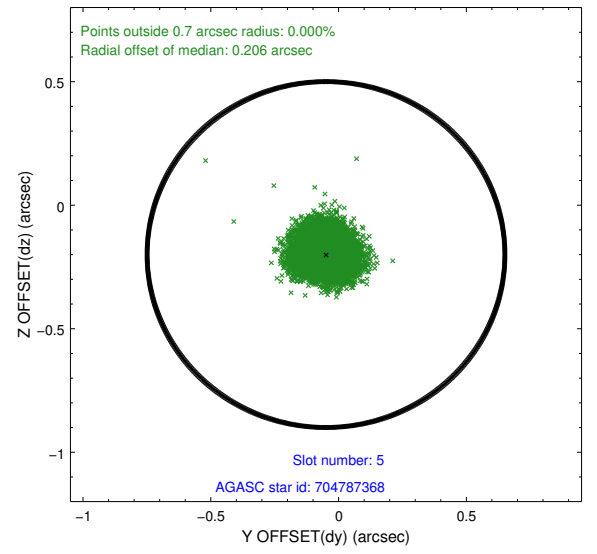
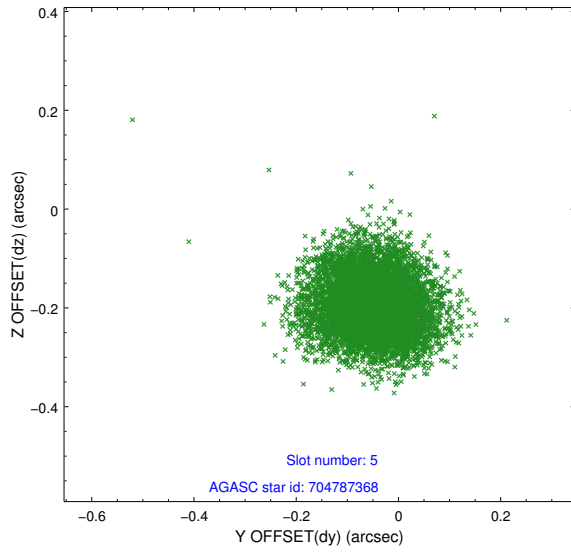
2.4.1 Slot 3



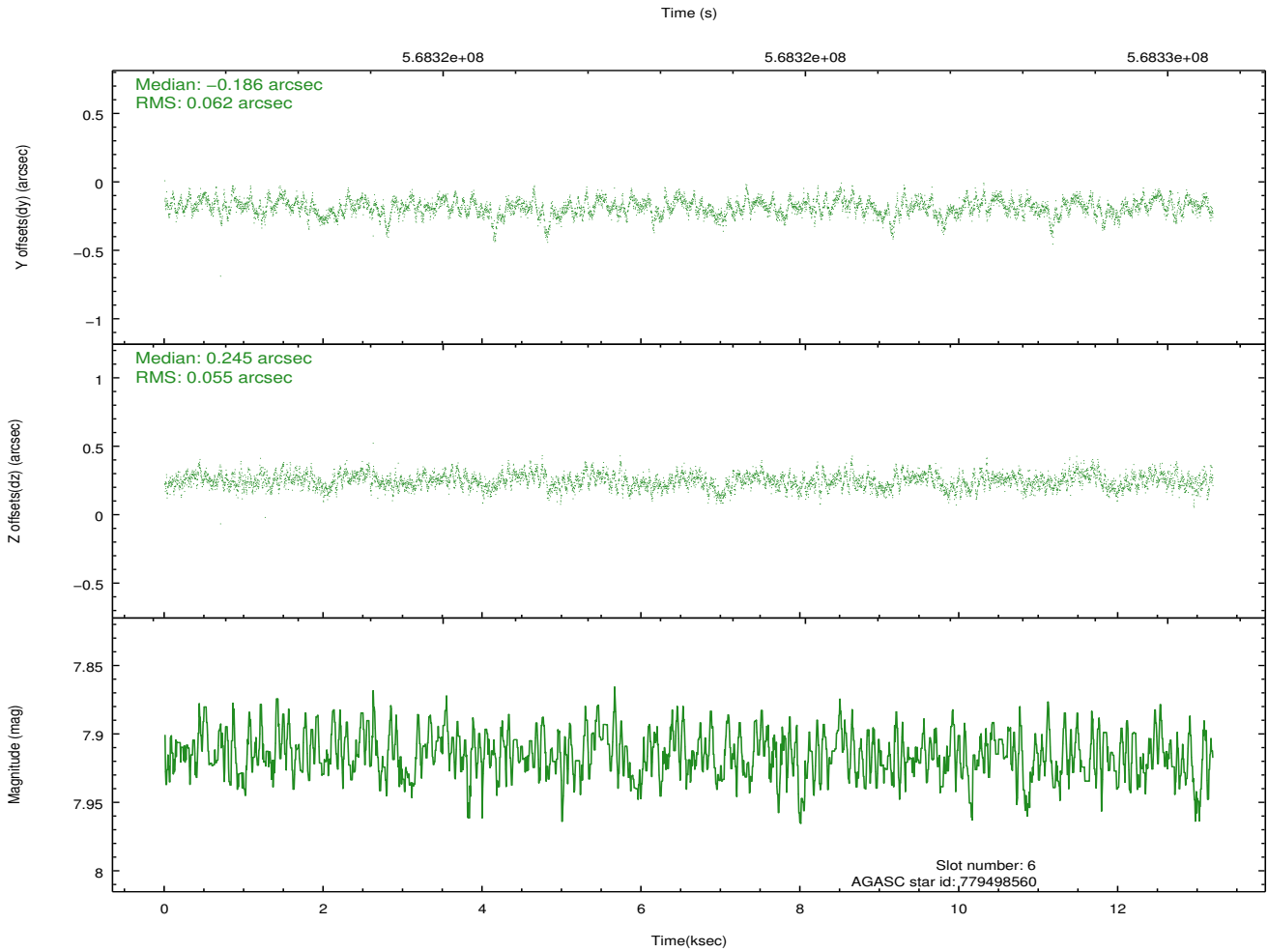
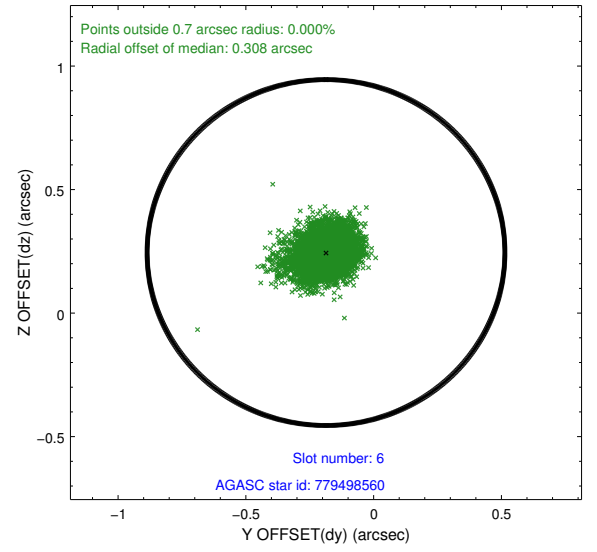
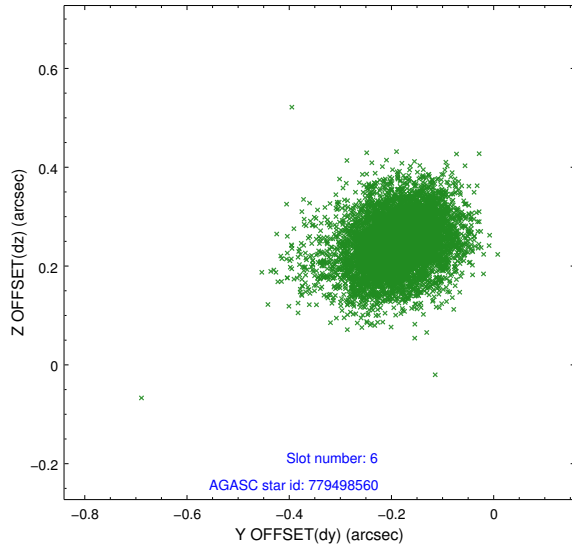
2.4.2 Slot 4



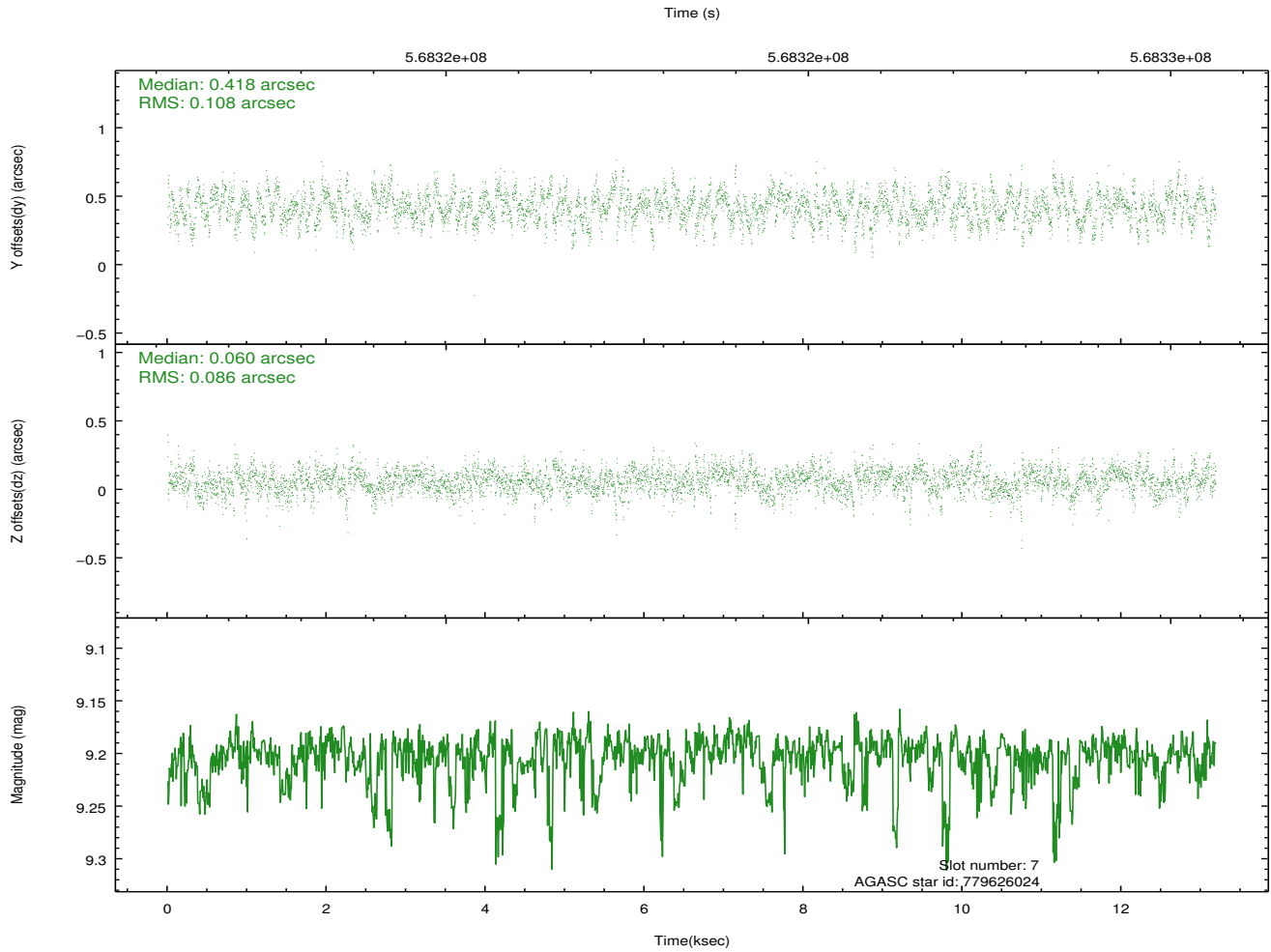
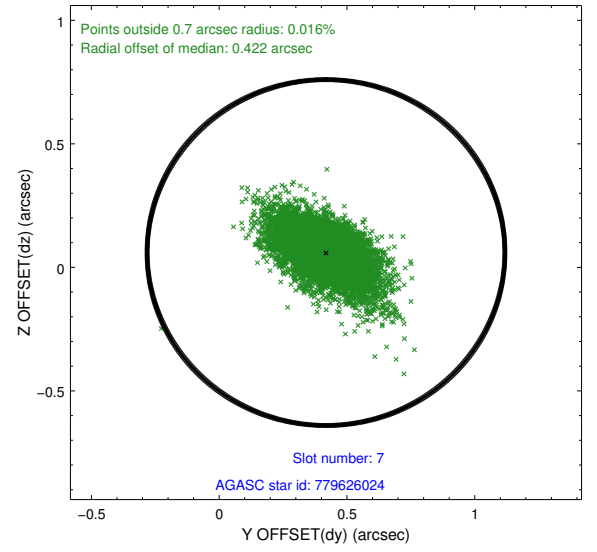
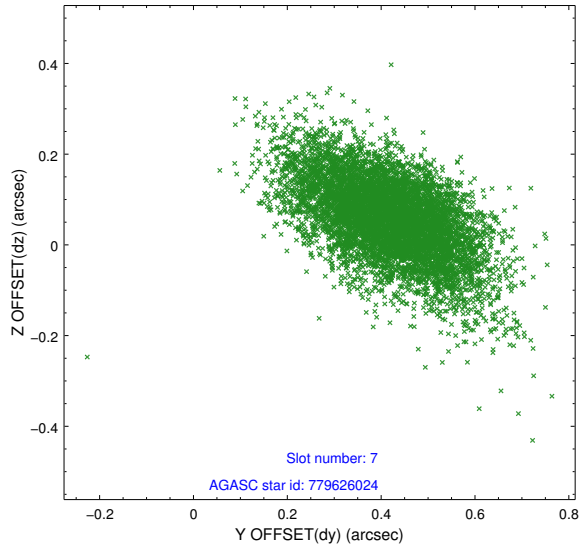
2.4.3 Slot 5



2.4.4 Slot 6

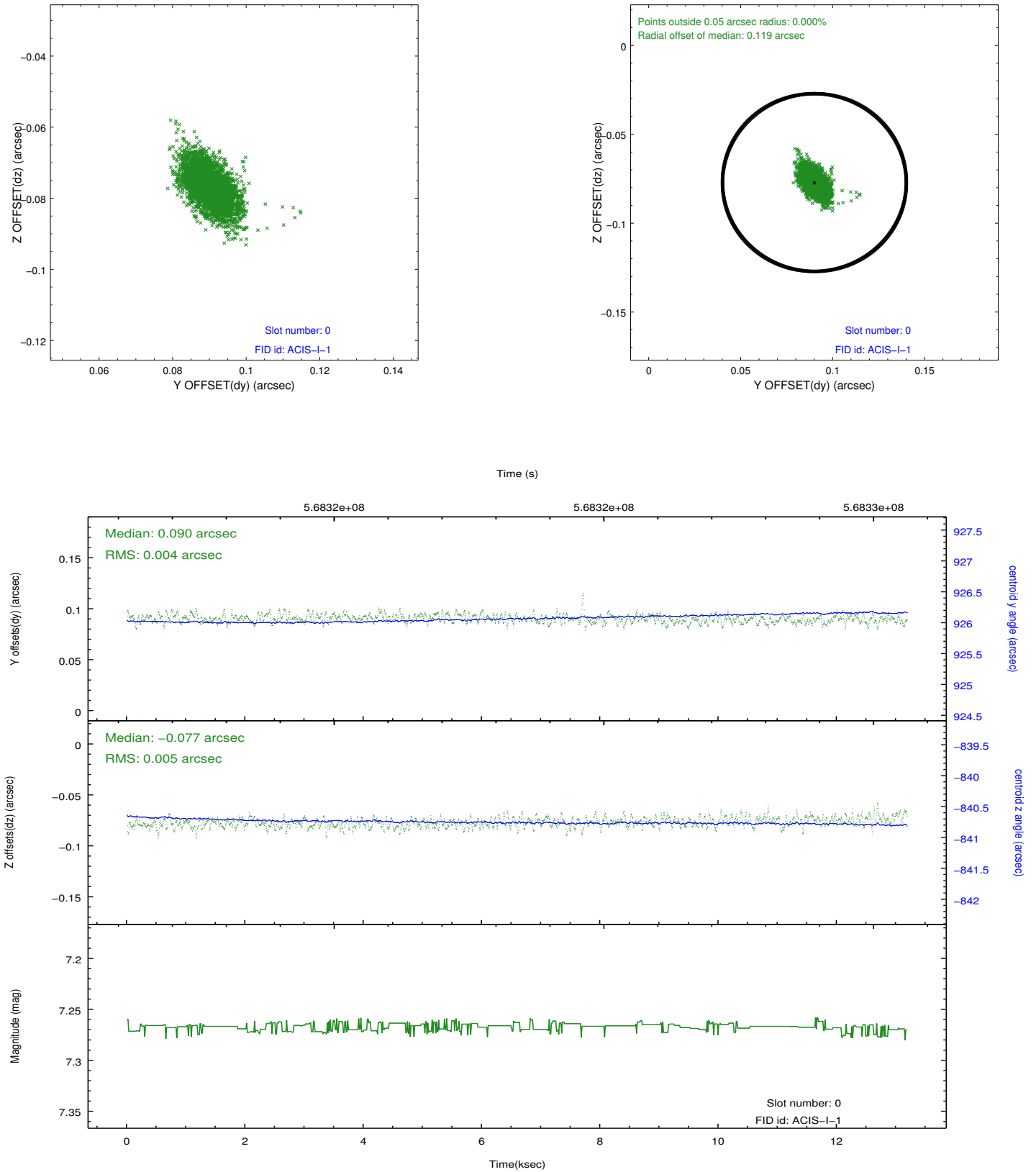


2.4.5 Slot 7

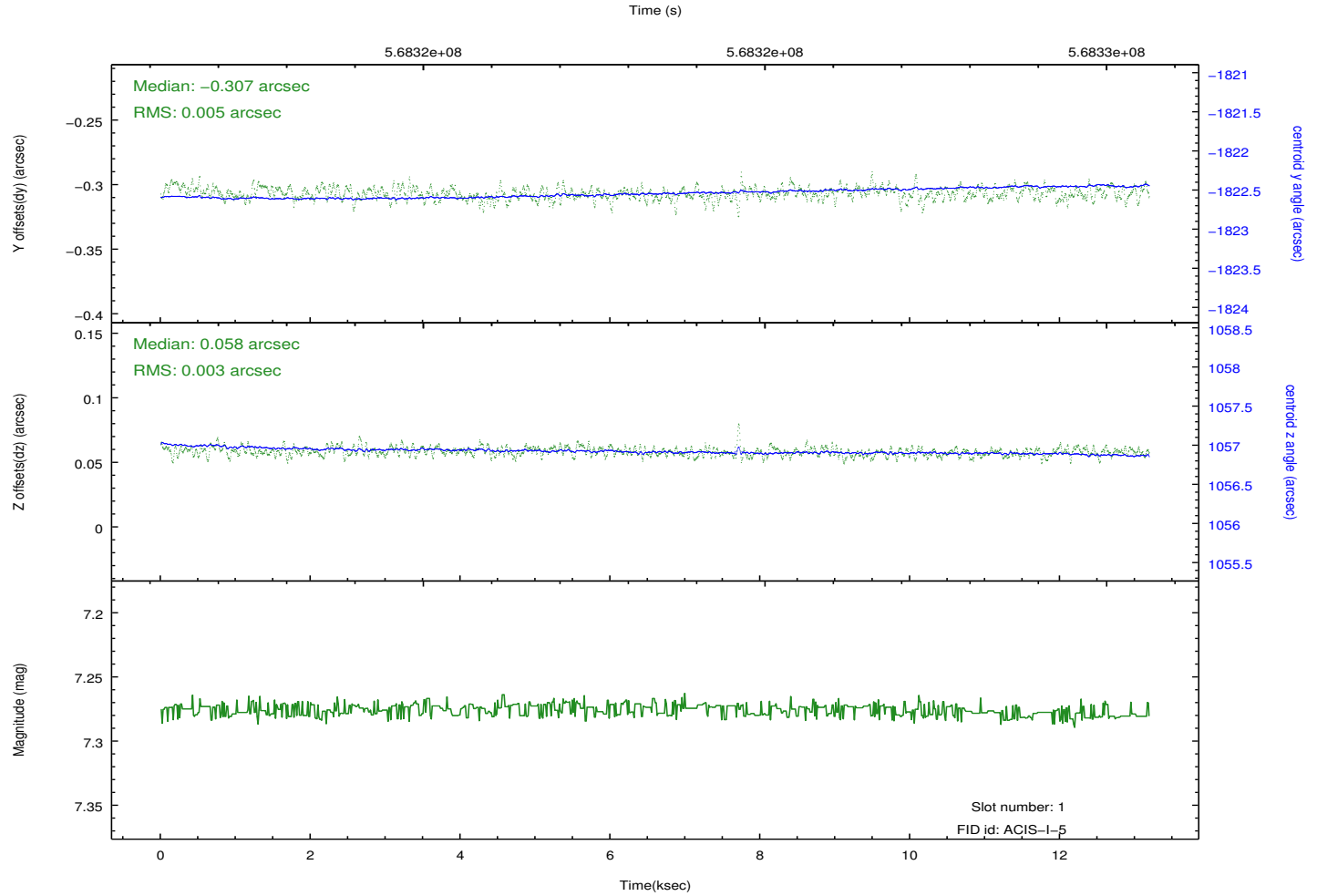
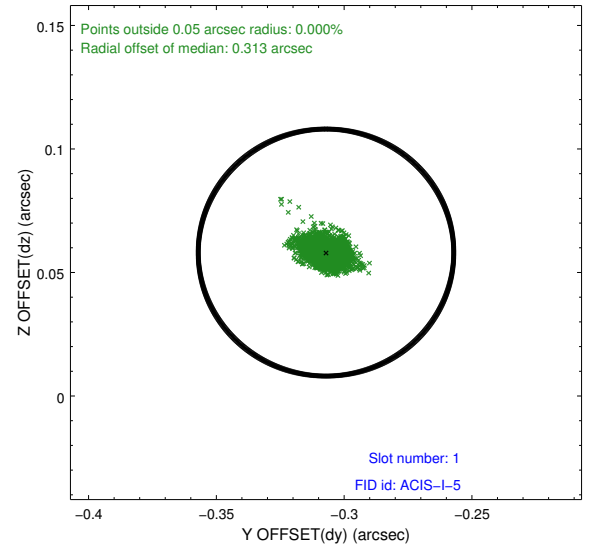
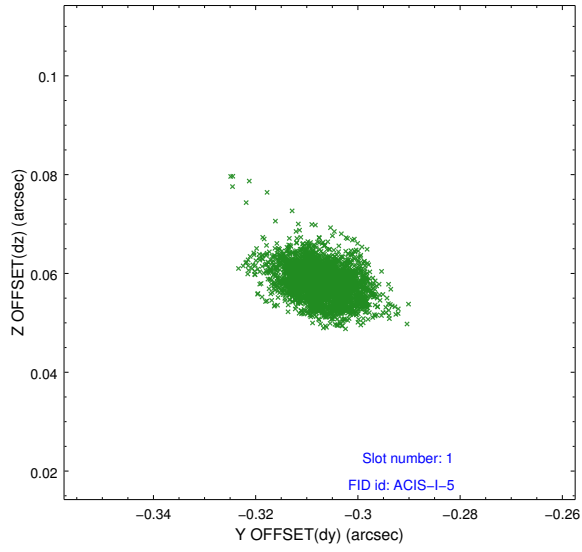


2.5 FID Slots

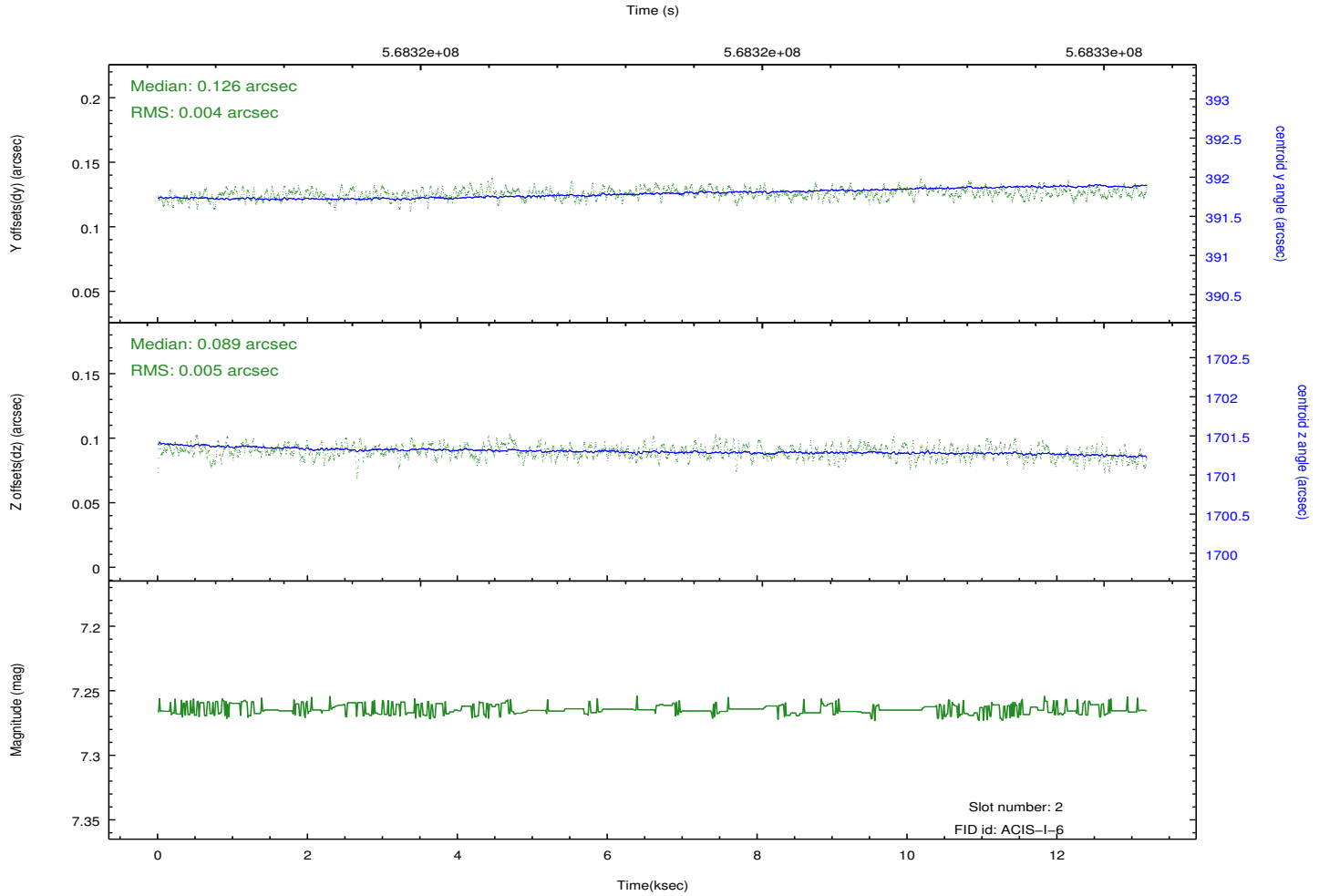
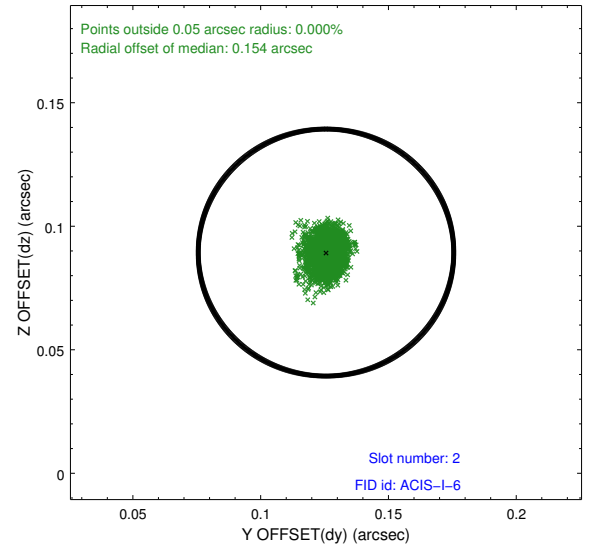
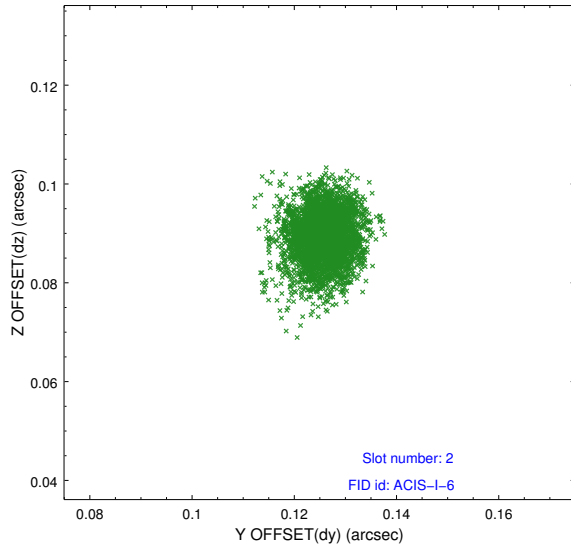
2.5.1 Slot 0



2.5.2 Slot 1



2.5.3 Slot 2



A Summary

A.1 Status

V&V Scientist	Jen Lauer
V&V Date (YYYY-MM-DD)	2016.01.05
V&V Edition	1
V&V Disposition and Status	OK
V&V Charge Time	13.084601913333

A.2 Comments