

V&V Reference Report

L2 ASCDS Version : 10.5.1.1

Observation 18259 - L2 Version 2
Chandra X-Ray Center

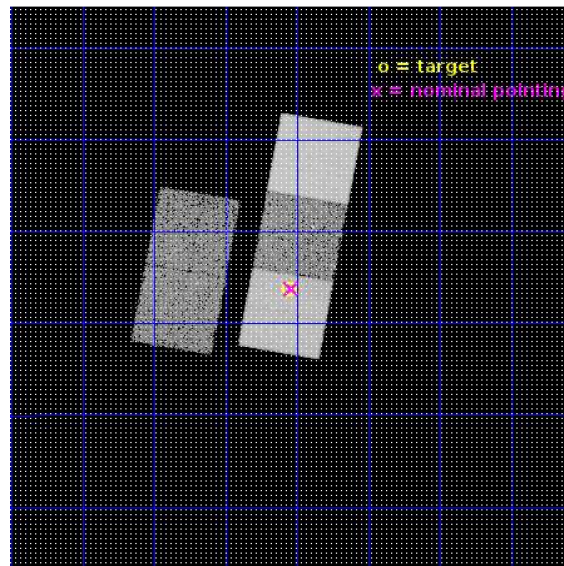
L2 Processing Date : Sep 9 2016

Contents

1	Front	2
2	OBI	3
2.1	OBI	3
2.1.1	Images	3
2.1.2	Bias	3
2.1.3	Parameters	4
2.1.4	Events	4
2.2	Compared Parameters	5
2.3	Aspect	6
2.4	Star Slots	9
2.4.1	Slot 3	9
2.4.2	Slot 4	10
2.4.3	Slot 5	11
2.4.4	Slot 6	12
2.5	FID Slots	13
2.5.1	Slot 0	13
2.5.2	Slot 1	14
2.5.3	Slot 2	15
A	Summary	16
A.1	Status	16
A.2	Comments	16

1 Front

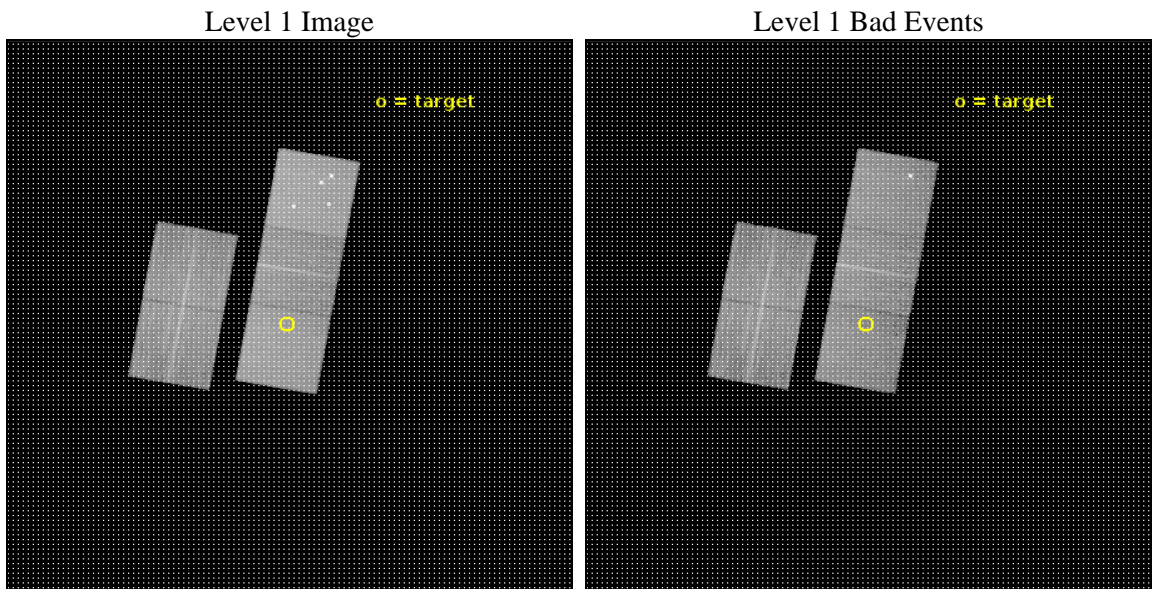
seq_num	801583	Sequence number
obs_id	18259	Observation id
title	Building a complete sample of $z>1$ XXL galaxy clusters	Proposal tit
observer	Dr Ben Maughan	Principal investigator
object	XLSS J022303.3-043621	Source name
dtcycle	0	
cycle	P	events from which exps? Prim/Second/Both
ra_targ	35.764167	Observer's specified target RA [deg]
dec_targ	-4.606	Observer's specified target Dec [deg]
ra_nom	35.760282698562	Nominal RA [deg]
dec_nom	-4.6039131203785	Nominal Dec [deg]
roll_nom	100.15632280241	Nominal Roll [deg]
revision	2	Processing version of data
ontime	21048.118178725	Sum of GTIs [s]
livetime	20773.109019321	Livetime [s]
ontime2	21047.954018712	Sum of GTIs [s]
ontime3	21047.995058775	Sum of GTIs [s]
ontime5	21048.077138782	Sum of GTIs [s]
ontime6	21048.036098719	Sum of GTIs [s]
ontime7	21048.118178725	Sum of GTIs [s]
l2events	211598	Number of level 2 events



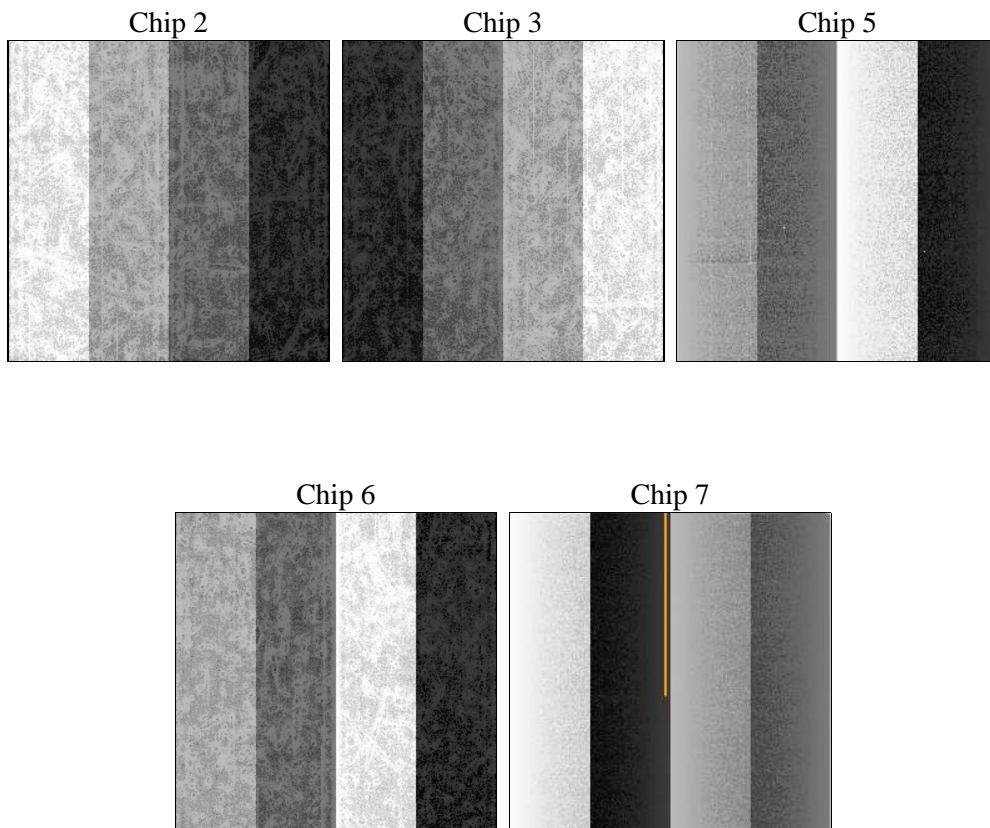
2 OBI

2.1 OBI

2.1.1 Images



2.1.2 Bias



2.1.3 Parameters

obi_num	1	Obi number	sched_exp_time	21000.000000	[s] Scheduled observation exposure time
ascdsver	10.5.1.1	Processing system revision	ontime	21048.118178725	Sum of GTIs [s]
caldsver	4.7.2	 	ontime2	21047.954018712	Sum of GTIs [s]
date	2016-09-09T22:00:53	Date and time of file creation	ontime3	21047.995058775	Sum of GTIs [s]
revision	2	Processing version of data	ontime5	21048.077138782	Sum of GTIs [s]
			ontime6	21048.036098719	Sum of GTIs [s]
			ontime7	21048.118178725	Sum of GTIs [s]
			l1events	808461	Number of level 1 events

2.1.4 Events

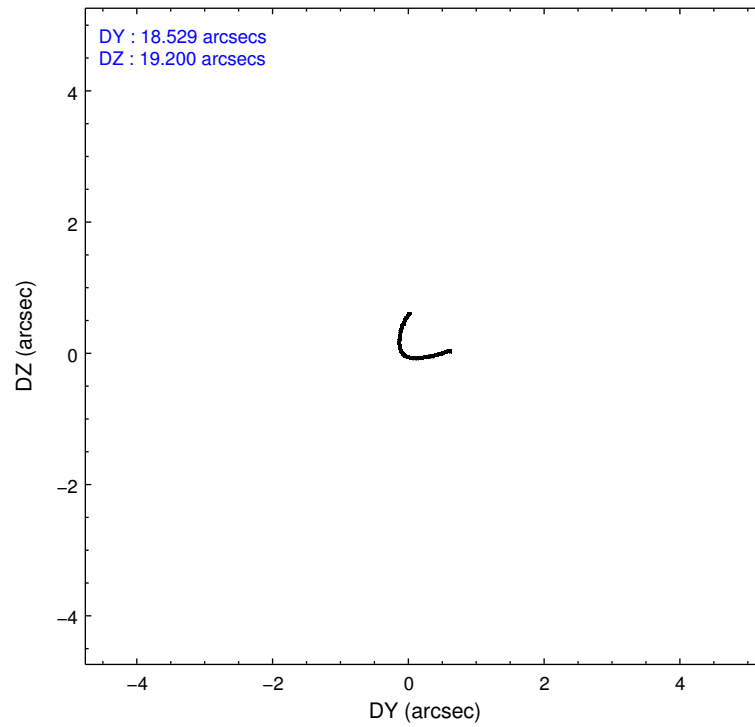
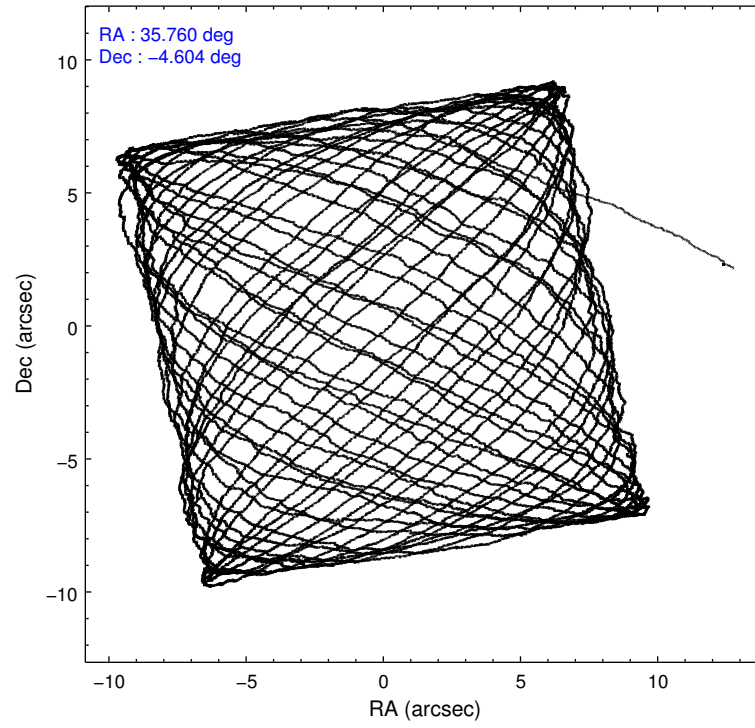
	ccd 2	ccd 3	ccd 5	ccd 6	ccd 7
level 1 events	131893	127507	236383	136382	176296
rejected events	117228	113206	118502	120247	99856
rejected %	88%	88%	50%	88%	56%

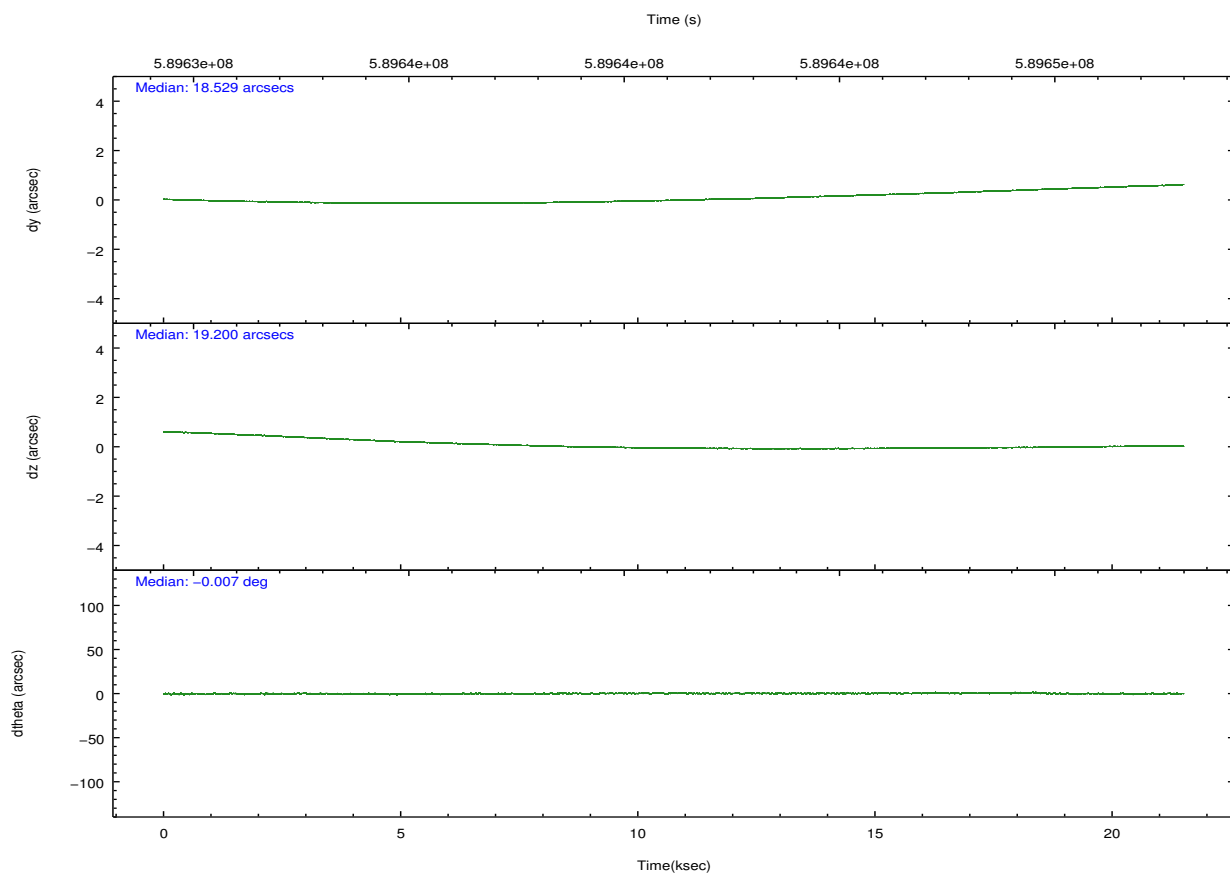
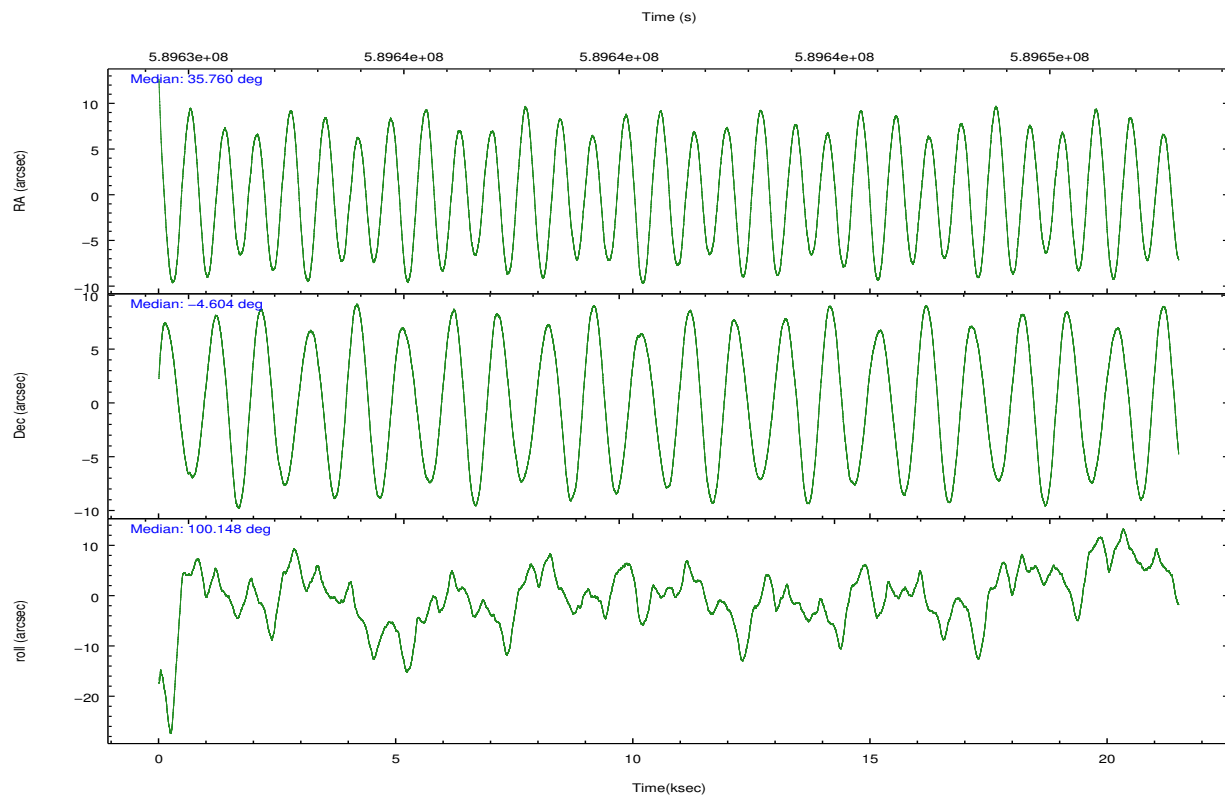
	ccd 2	ccd 3	ccd 5	ccd 6	ccd 7
grade 0 events	5158	4985	21291	5579	6474
	3%	3%	9%	4%	3%
grade 1 events	72	72	458	77	262
	0%	0%	0%	0%	0%
grade 2 events	3666	3142	33641	3556	15986
	2%	2%	14%	2%	9%
grade 3 events	1403	1493	3266	1649	6447
	1%	1%	1%	1%	3%
grade 4 events	1526	1605	3180	1635	6195
	1%	1%	1%	1%	3%
grade 5 events	5572	6561	16191	6641	18059
	4%	5%	6%	4%	10%
grade 6 events	2915	3077	56527	3721	41350
	2%	2%	23%	2%	23%
grade 7 events	111581	106572	101829	113524	81523
	84%	83%	43%	83%	46%

2.2 Compared Parameters

Parameter	Planned	Actual	Parameter	Planned	Actual
Instrument	ACIS	ACIS	Obspar format version number	7	7
Detector	ACIS-23567	ACIS-23567	Obspar file type	PREDICTED	ACTUAL
Grating	NONE	NONE	Obspar update status	NONE	UPDATED
Data mode	FAINT	FAINT	Number of optional ACIS chips dropped	0	0
Observation mode	POINTING	POINTING	On-chip summing requested	N	N
[deg] Pointing RA	35.778328	35.76028269856221	Subarray requested	NONE	NONE
[deg] Pointing Dec	-4.624680	-4.603913120378468	Alternating exposures requested	N	N
[deg] Pointing Roll	100.001137	100.1563228024145	[s] Primary exposure time	0.000000	3.1
[mm] SIM focus pos	-0.684267	-0.6828225247311905			
[mm] SIM defocus	0	0.001444936568705701			
[mm] SIM translation stage pos	-190.132523	-190.1425803651734			
[mm] SIM translation stage offset	0	0.01005778216563158			
[s] Observation start time (MET)	589630910.184000	589629811.67477			
Observation start date	2016-09-07T10:20:42	2016-09-07T10:03:31			
[s] Observation end time (MET)	589651910.184000	589652824.9761			
Observation end date	2016-09-07T16:10:42	2016-09-07T16:27:04			
Read mode	TIMED	TIMED			

2.3 Aspect



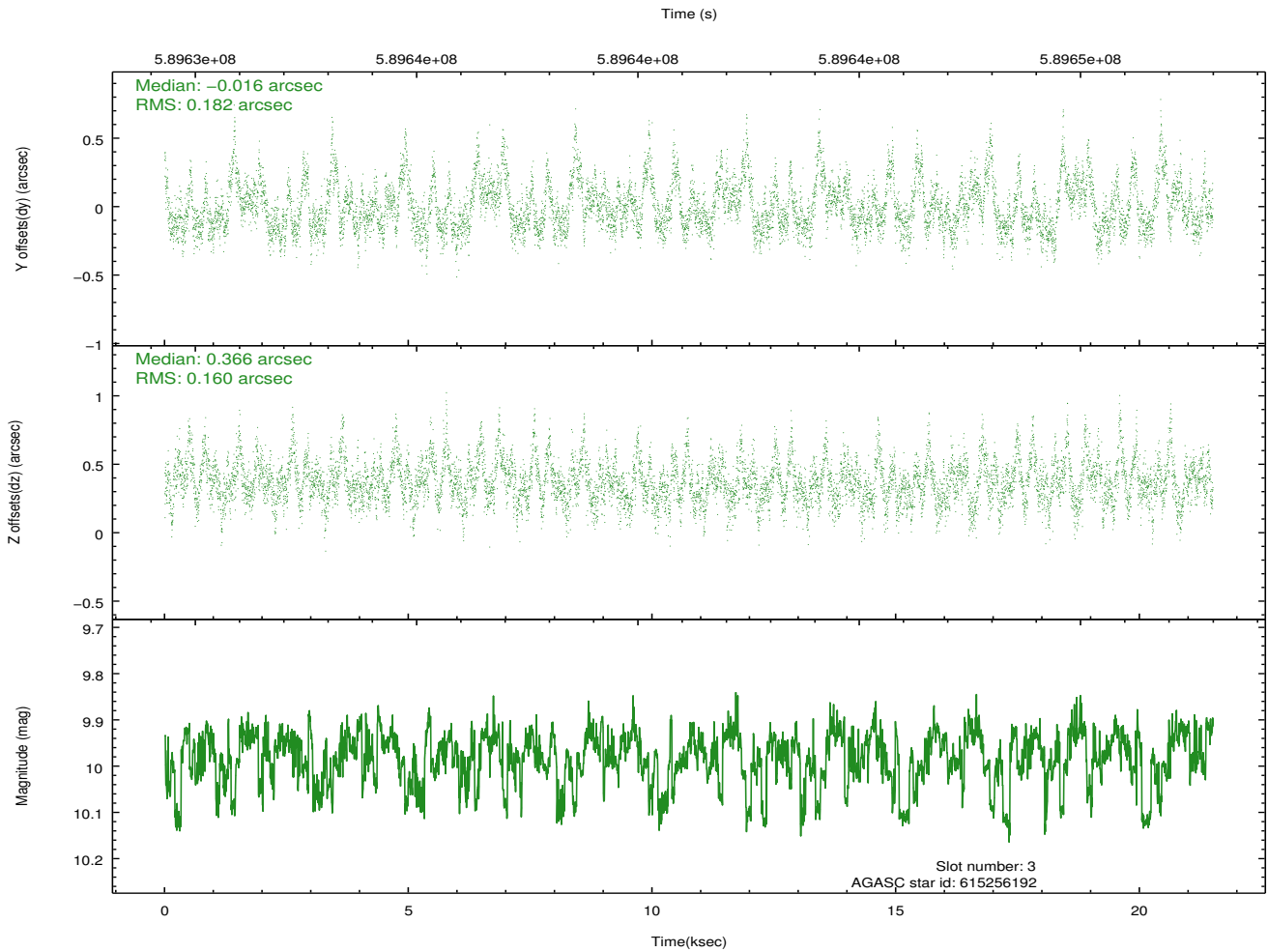
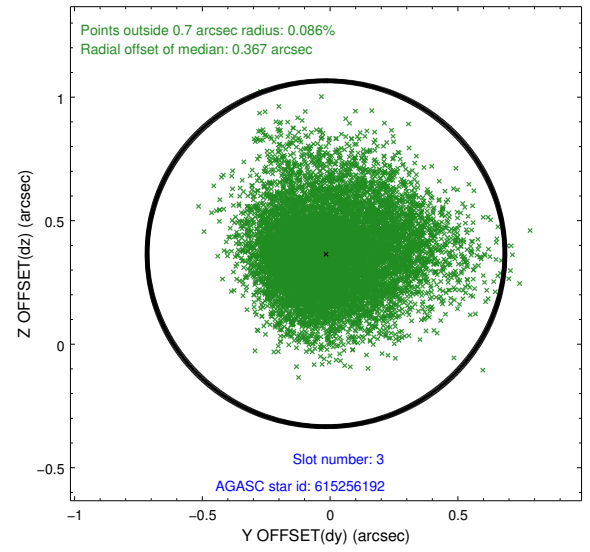
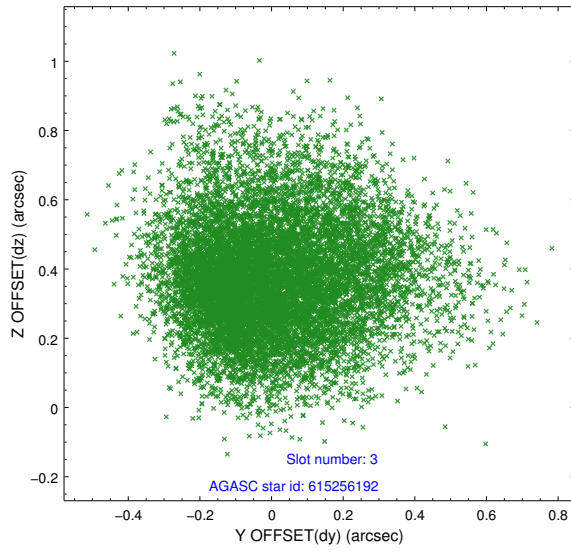


Slot Statistics

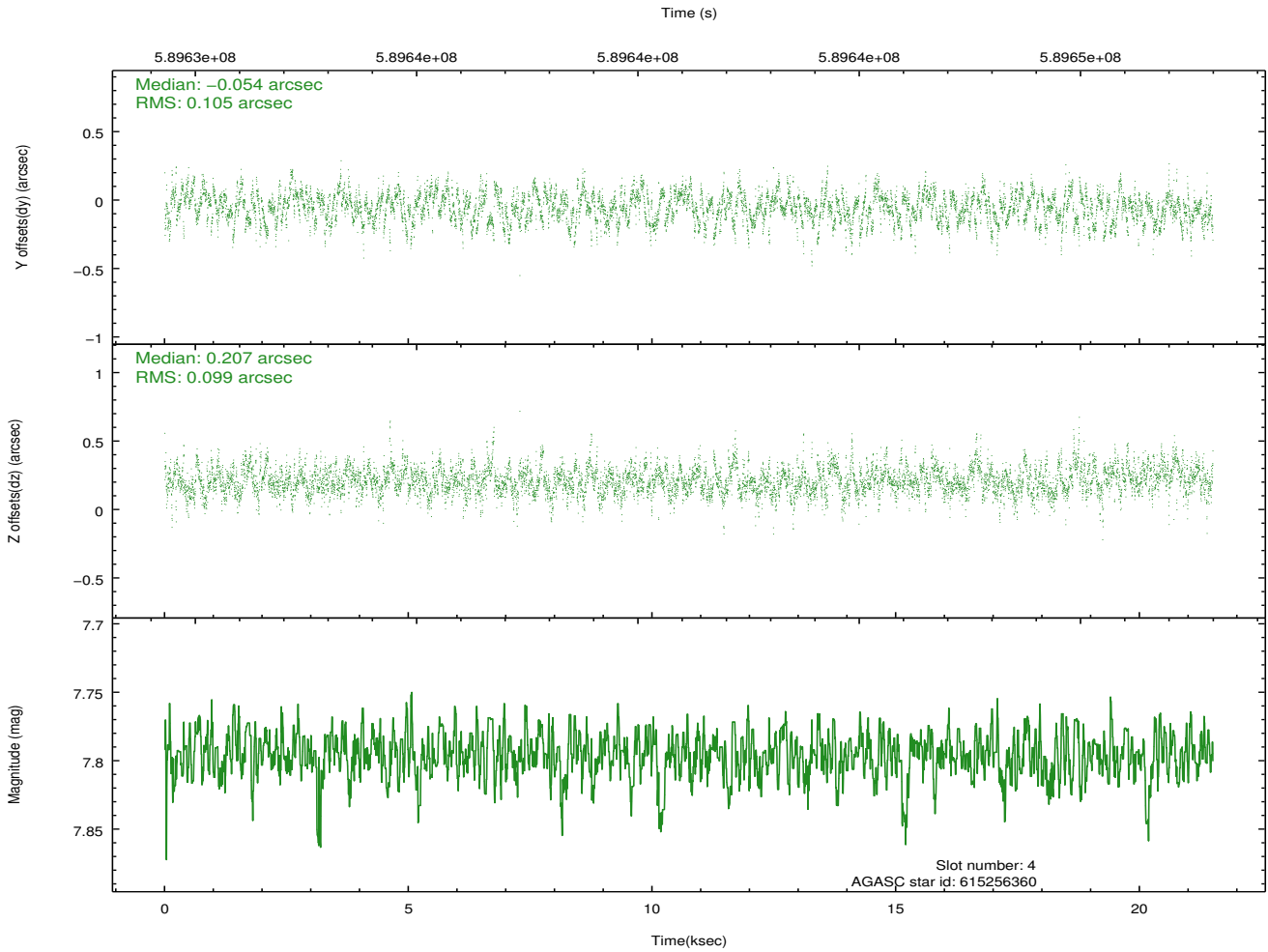
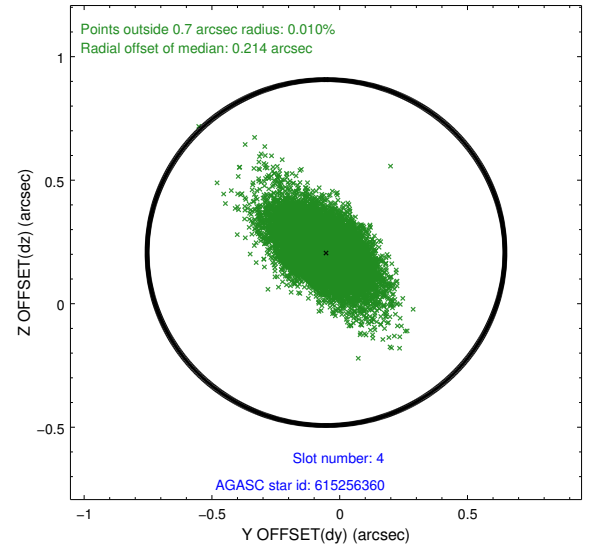
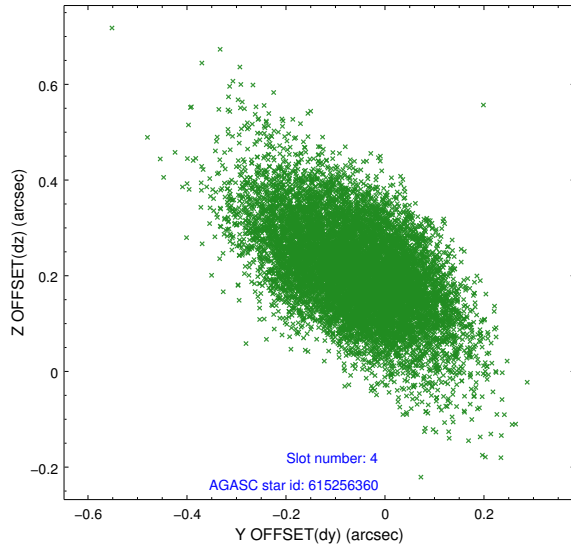
slot	status	used	id	mag	n_pts	med_dy	med_dz	dr1	dr2	ra	dec	mean_y	mean_z
0	FID		ACIS-S-1	7.10	5245	0.047	-0.042	0.013	0.025	0.000000	0.000000	924.44	-1736.38
1	FID		ACIS-S-4	7.11	5244	0.377	0.012	0.009	0.016	0.000000	0.000000	2142.20	167.71
2	FID		ACIS-S-5	7.11	5245	-0.450	0.044	0.008	0.017	0.000000	0.000000	-1824.78	161.37
3	GUIDE	used	615256192	9.98	10475	-0.016	0.366	0.252	0.427	36.014543	-4.191354	1388.76	-1105.26
4	GUIDE	used	615256360	7.80	10486	-0.054	0.207	0.147	0.260	36.286608	-3.875886	2337.46	-2266.21
5	GUIDE	used	615256944	9.72	10466	0.155	-0.243	0.255	0.385	35.497386	-4.510719	579.16	921.61
6	GUIDE	used	615256952	9.18	10479	-0.102	-0.351	0.129	0.213	35.229841	-4.099841	2202.06	1611.79
7	OMITTED			0.00	0	0.000	0.000	0.000	0.000	0.000000	0.000000	0.00	0.00

2.4 Star Slots

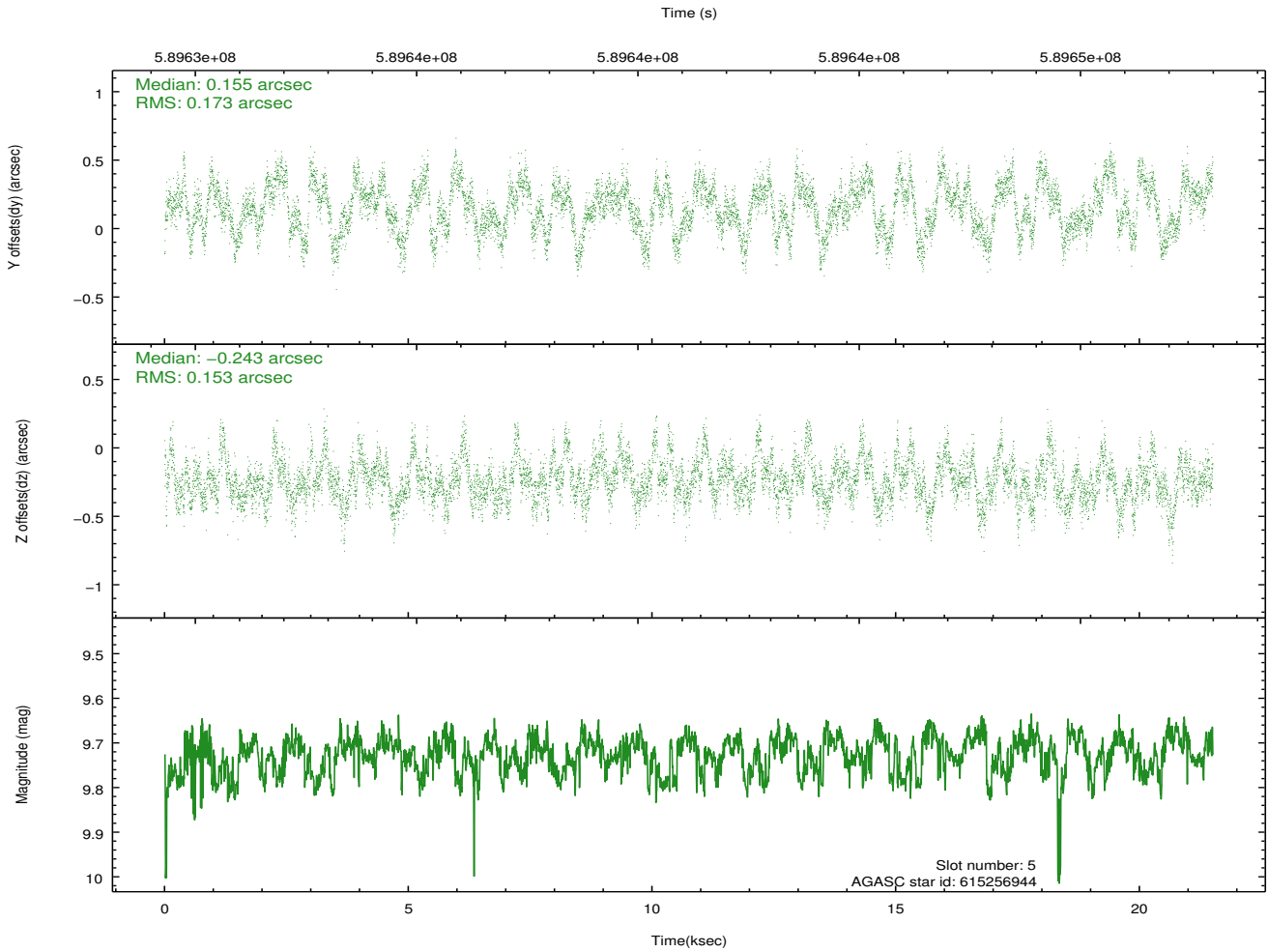
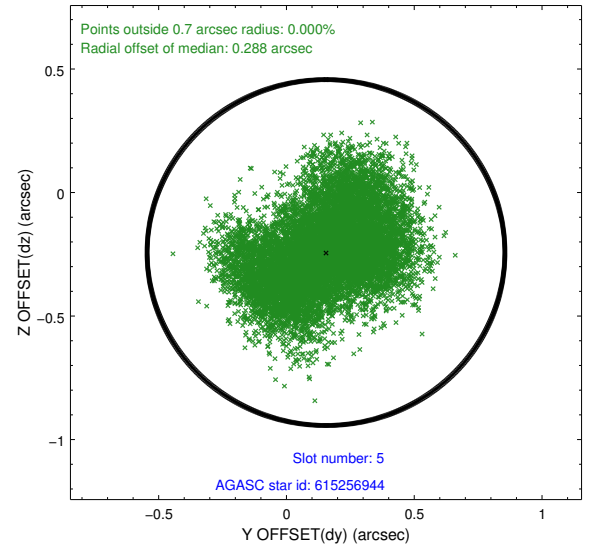
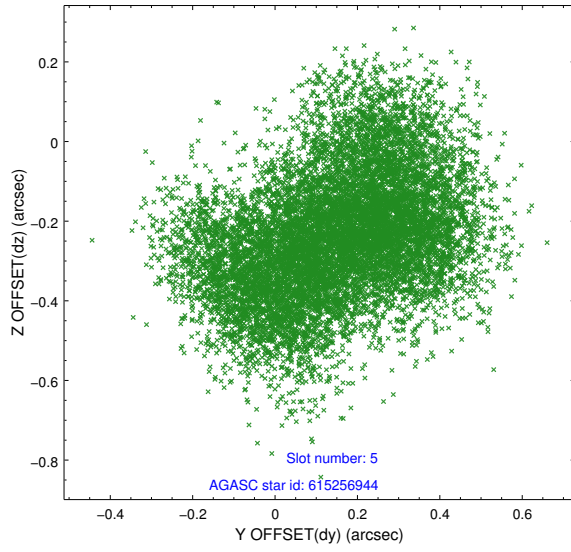
2.4.1 Slot 3



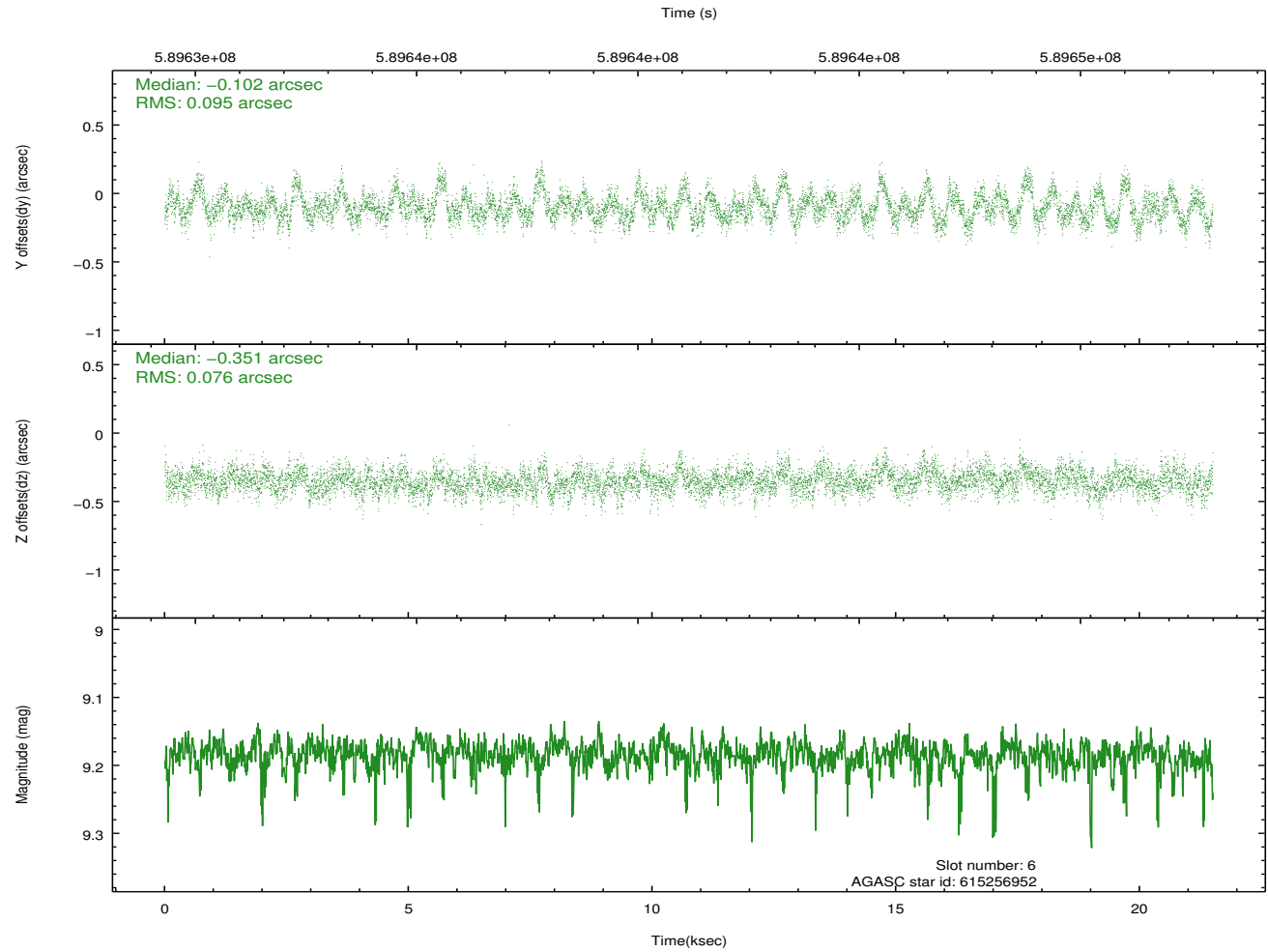
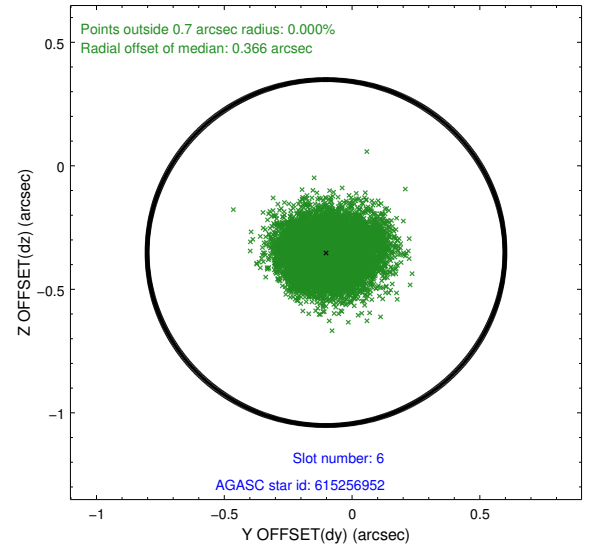
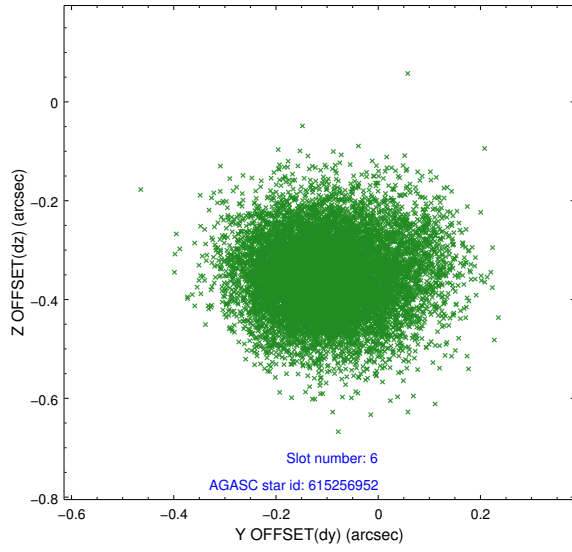
2.4.2 Slot 4



2.4.3 Slot 5

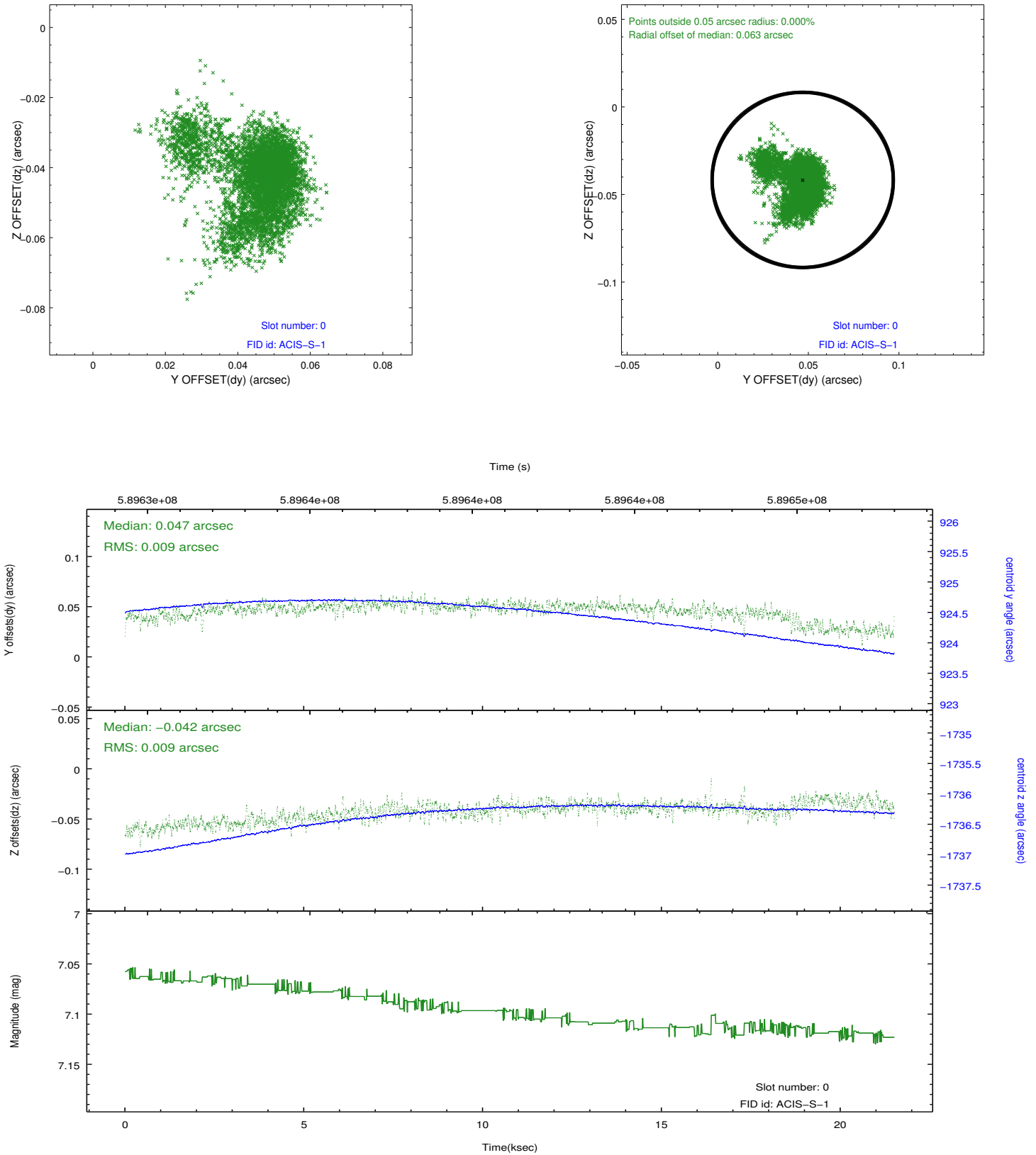


2.4.4 Slot 6

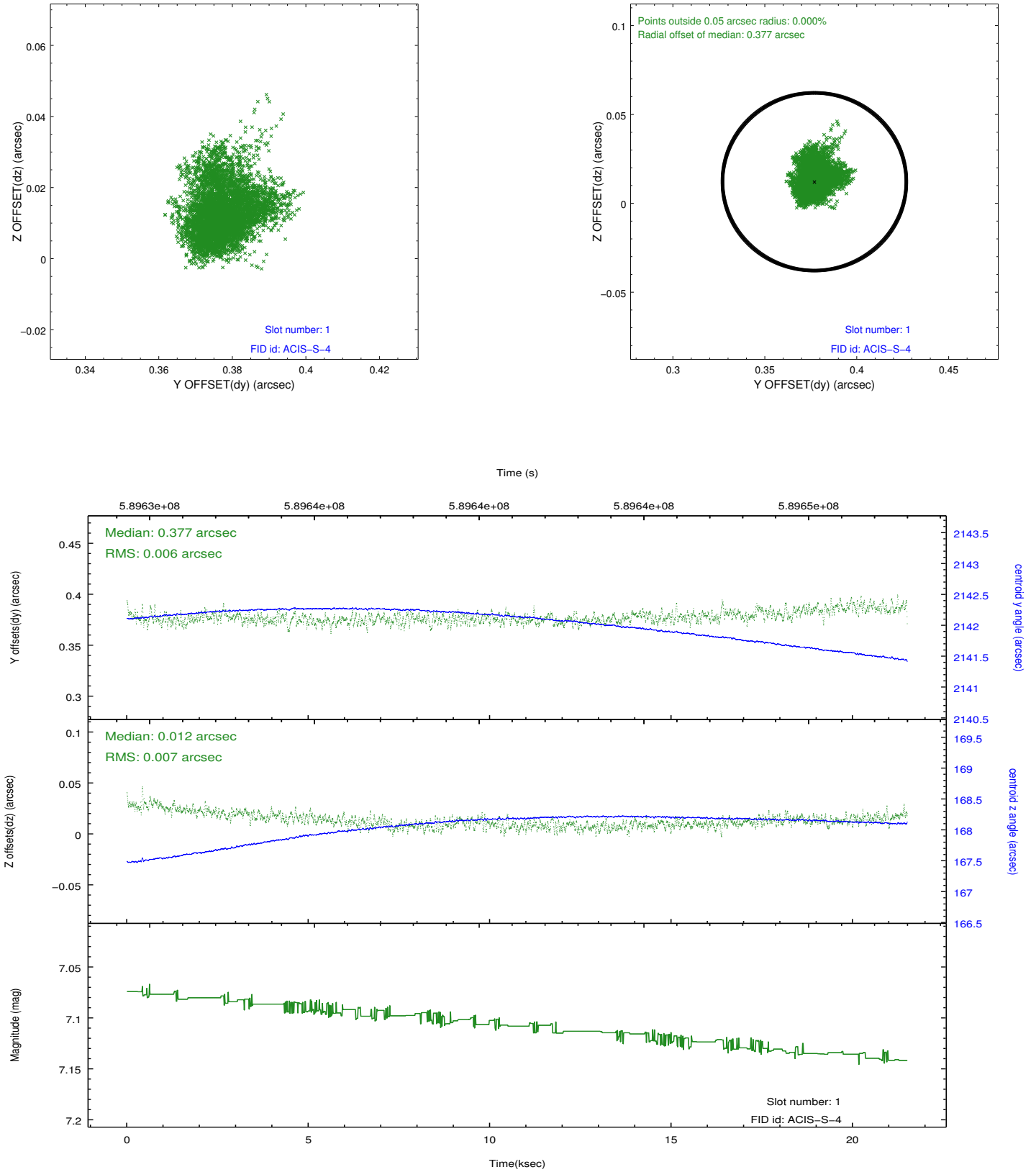


2.5 FID Slots

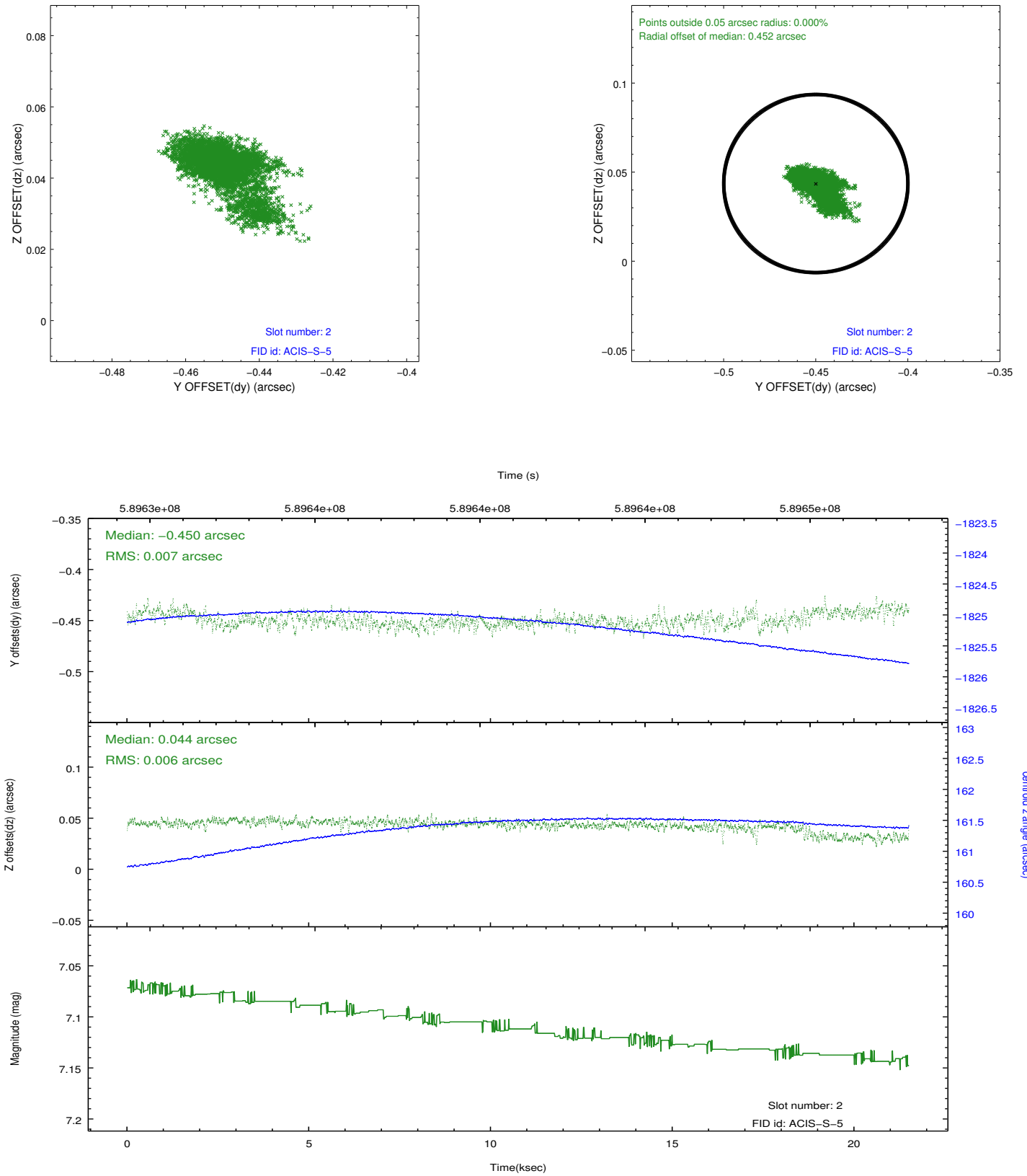
2.5.1 Slot 0



2.5.2 Slot 1



2.5.3 Slot 2



A Summary

A.1 Status

V&V Scientist	Beth Sundheim
V&V Date (YYYY-MM-DD)	2016.09.12
V&V Edition	1
V&V Disposition and Status	OK
V&V Charge Time	21.048118178725

A.2 Comments

The guide star in slot 7 was removed from the aspect solution due to poor data quality. The aspect solution is improved by the removal of this slot from the solution.