

V&V Reference Report

L2 ASCDS Version : 10.4.3.1

Observation 18232 - L2 Version 1
Chandra X-Ray Center

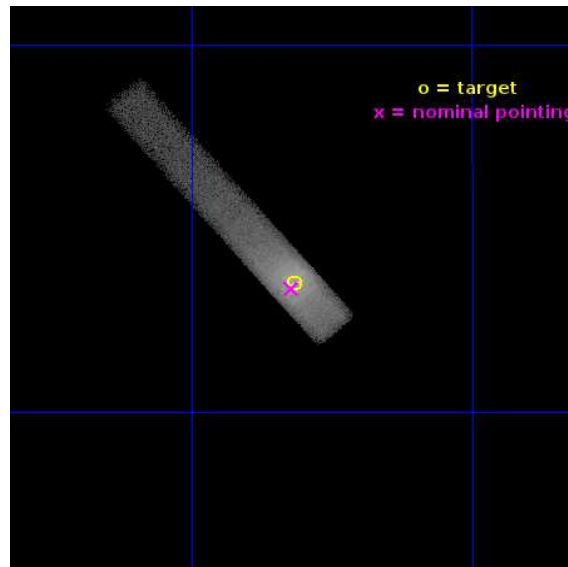
L2 Processing Date : Apr 27 2016

Contents

1	Front	2
2	OBI	3
2.1	OBI	3
2.1.1	Images	3
2.1.2	Bias	3
2.1.3	Parameters	4
2.1.4	Events	4
2.2	Compared Parameters	5
2.3	Aspect	6
2.4	Star Slots	9
2.4.1	Slot 3	9
2.4.2	Slot 4	10
2.4.3	Slot 5	11
2.4.4	Slot 6	12
2.4.5	Slot 7	13
2.5	FID Slots	14
2.5.1	Slot 0	14
2.5.2	Slot 1	15
2.5.3	Slot 2	16
A	Summary	17
A.1	Status	17
A.2	Comments	17

1 Front

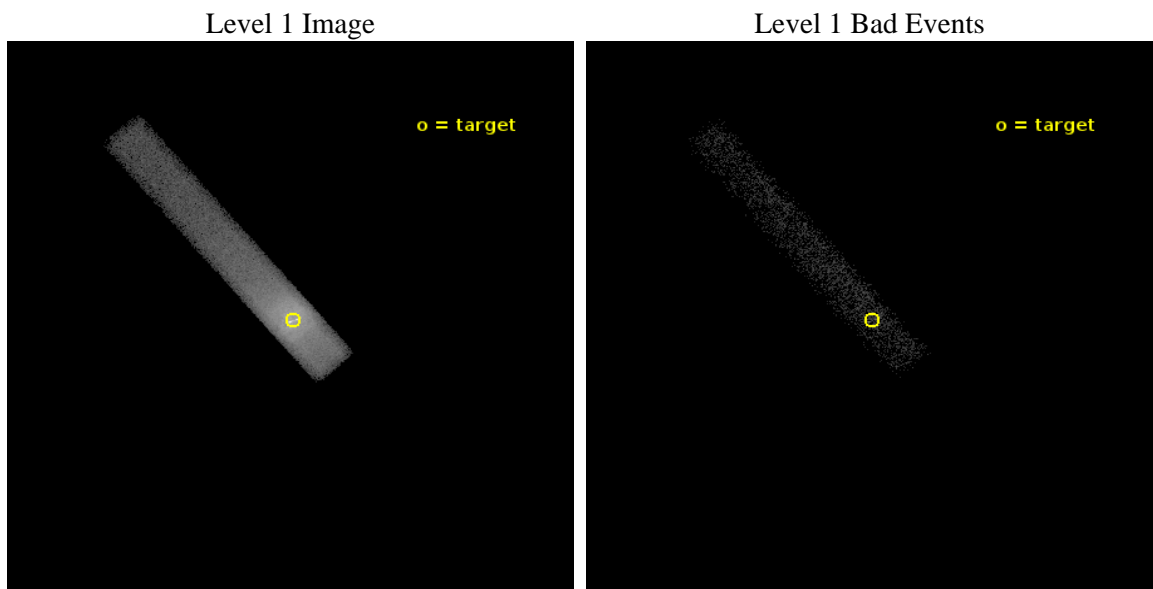
seq_num	801560	Sequence number
obs_id	18232	Observation id
title	The imprints of AGN feedback within the Bondi radius of M87	Propos
observer	Helen Russell	Principal investigator
object	M87	Source name
dtcycle	0	
cycle	P	events from which exps? Prim/Second/Both
ra_targ	187.704167	Observer's specified target RA [deg]
dec_targ	12.391667	Observer's specified target Dec [deg]
ra_nom	187.70560838022	Nominal RA [deg]
dec_nom	12.389326201739	Nominal Dec [deg]
roll_nom	229.15634551403	Nominal Roll [deg]
revision	1	Processing version of data
ontime	20069.506979823	Sum of GTIs [s]
livetime	18201.983475261	Livetime [s]
ontime7	20069.506979823	Sum of GTIs [s]
l2events	124298	Number of level 2 events



2 OBI

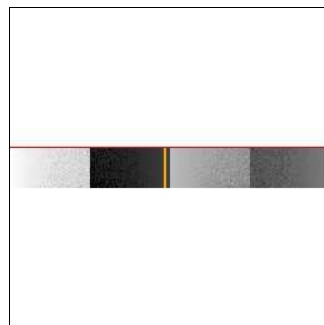
2.1 OBI

2.1.1 Images



2.1.2 Bias

Chip 7



2.1.3 Parameters

obi_num	0	Obi number	sched_exp_time	20000.000000	[s] Scheduled observation exposure time
ascdsver	10.4.3.1	Processing system revision	ontime	20069.506979823	Sum of GTIs [s]
caldbver	4.7.1	 	ontime7	20069.506979823	Sum of GTIs [s]
date	2016-04-27T20:58:07	Date and time of file creation	l1events	137650	Number of level 1 events
revision	1	Processing version of data			

2.1.4 Events

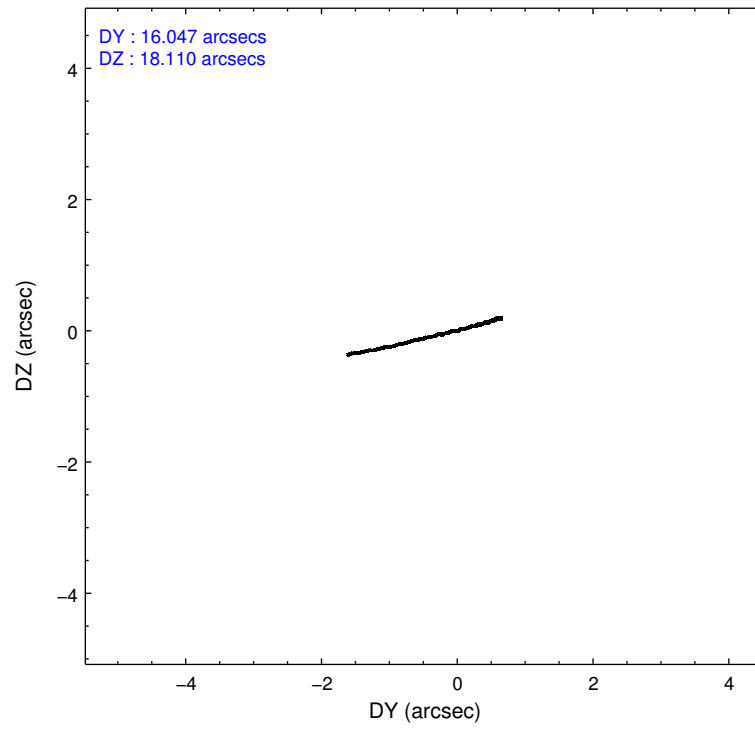
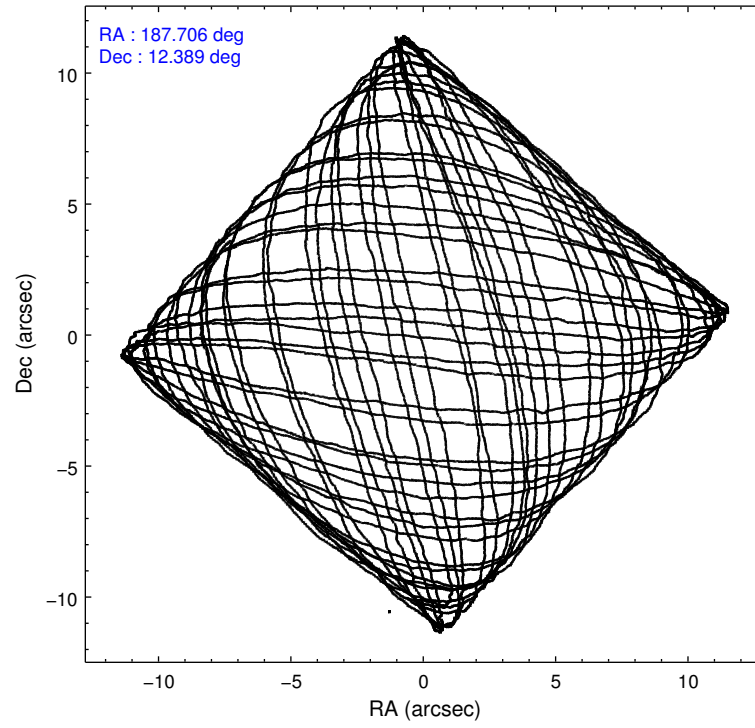
	ccd 7
level 1 events	137650
rejected events	12022
rejected %	8%

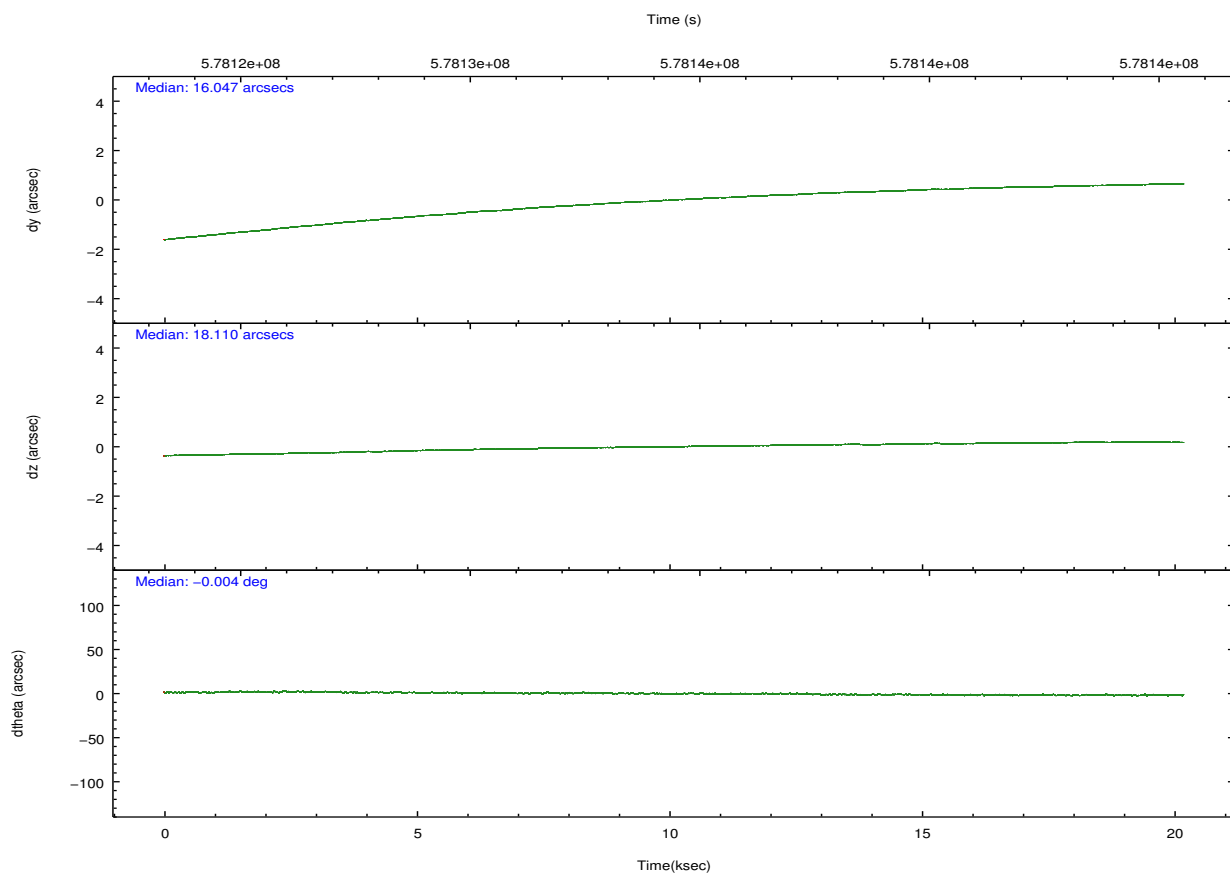
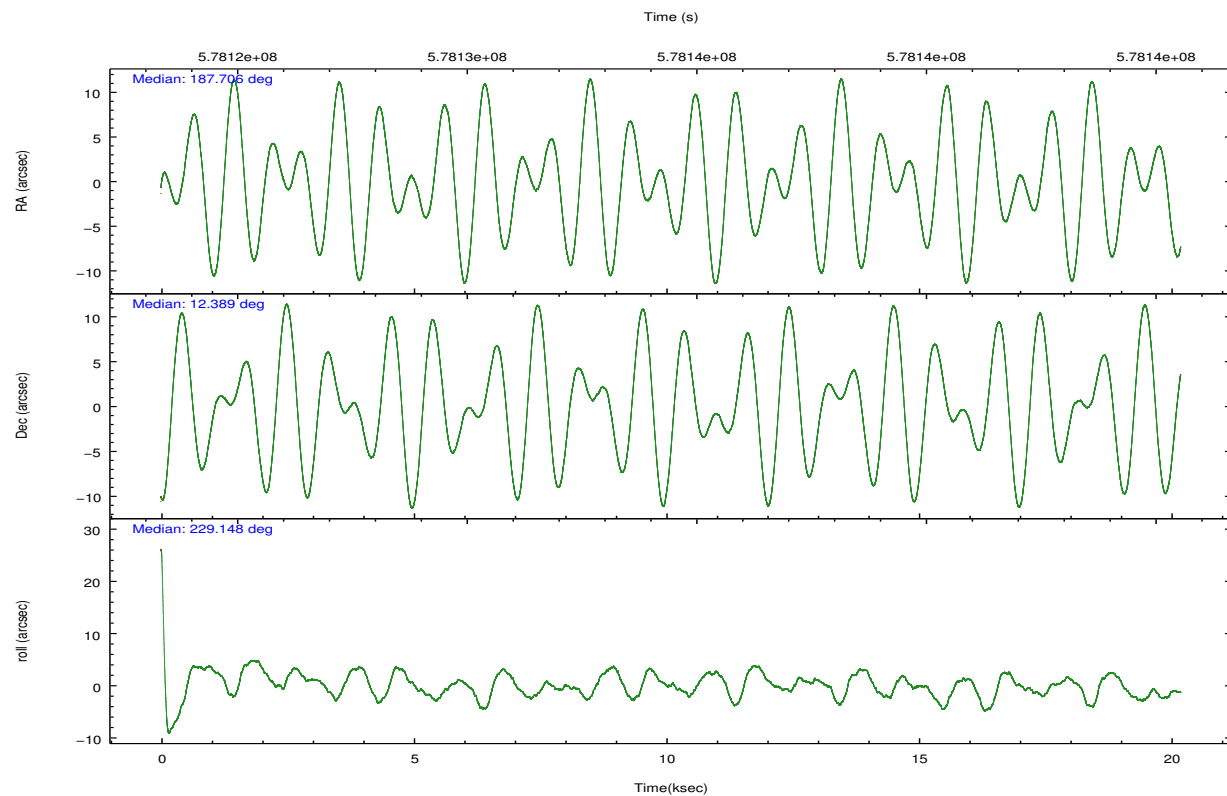
	ccd 7
grade 0 events	34399
	24%
grade 1 events	68
	0%
grade 2 events	33179
	24%
grade 3 events	14946
	10%
grade 4 events	14582
	10%
grade 5 events	2893
	2%
grade 6 events	28524
	20%
grade 7 events	9059
	6%

2.2 Compared Parameters

Parameter	Planned	Actual	Parameter	Planned	Actual
Instrument	ACIS	ACIS	Obspar format version number	7	7
Detector	ACIS-7	ACIS-7	Obspar file type	PREDICTED	ACTUAL
Grating	NONE	NONE	Obspar update status	NONE	UPDATED
Data mode	FAINT	FAINT	Number of optional ACIS chips dropped	0	0
Observation mode	POINTING	POINTING	On-chip summing requested	N	N
[deg] Pointing RA	187.710535	187.7056083802188	Subarray requested	CUSTOM	1/8
[deg] Pointing Dec	12.416358	12.38932620173865	Subarray start row	449	449
[deg] Pointing Roll	228.998633	229.1563455140321	Subarray row count	128	128
[mm] SIM focus pos	-0.684267	-0.6828225247311905	Alternating exposures requested	N	N
[mm] SIM defocus	0	0.001444936568705701	[s] Primary exposure time	0.000000	0.4
[mm] SIM translation stage pos	-190.132523	-190.1400660498719			
[mm] SIM translation stage offset	0	0.00754346686406393			
[s] Observation start time (MET)	578124521.184000	578123781.65247			
Observation start date	2016-04-27T06:07:33	2016-04-27T05:56:21			
[s] Observation end time (MET)	578144521.184000	578145199.54119			
Observation end date	2016-04-27T11:40:53	2016-04-27T11:53:19			
Read mode	TIMED	TIMED			

2.3 Aspect



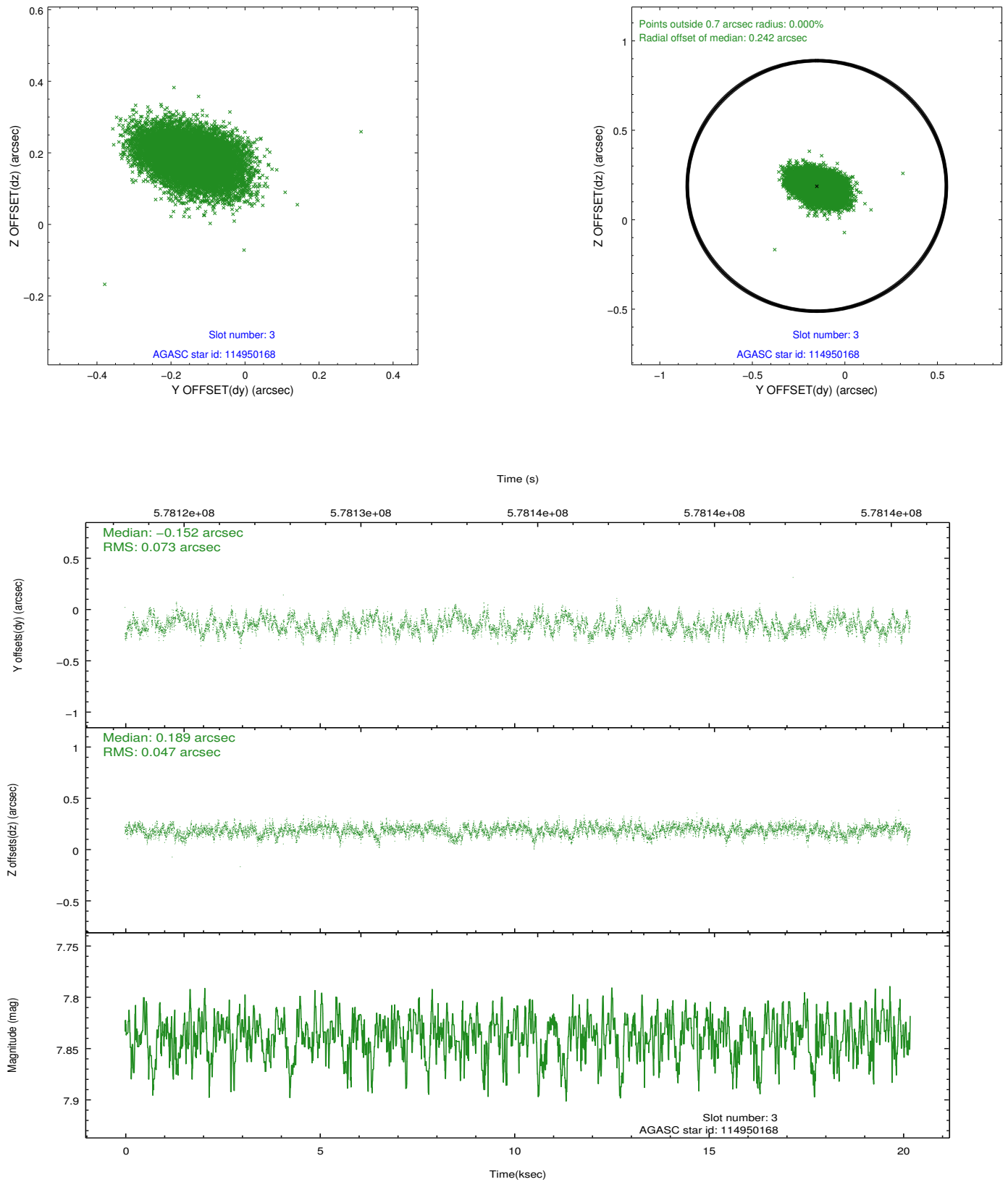


Slot Statistics

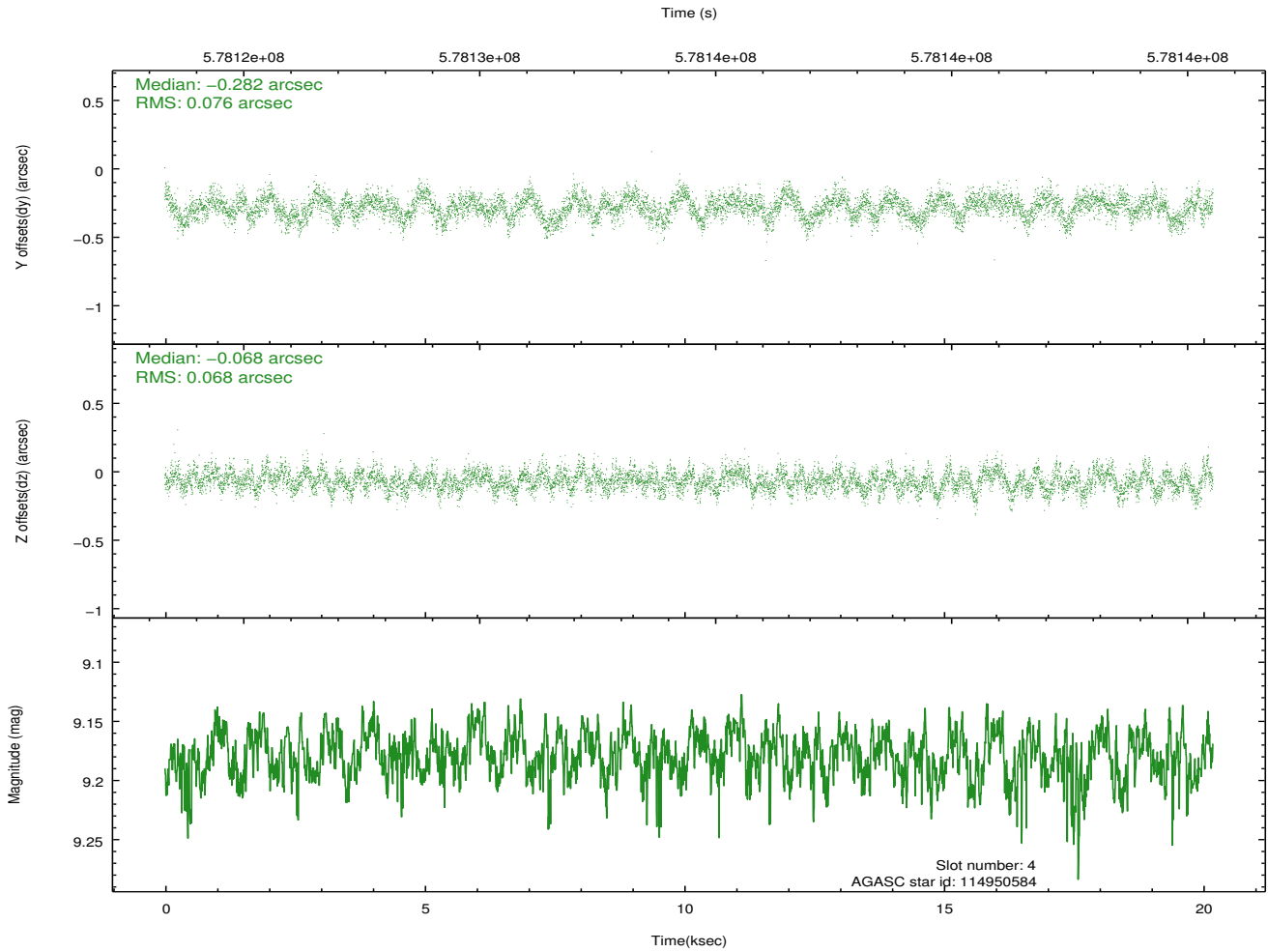
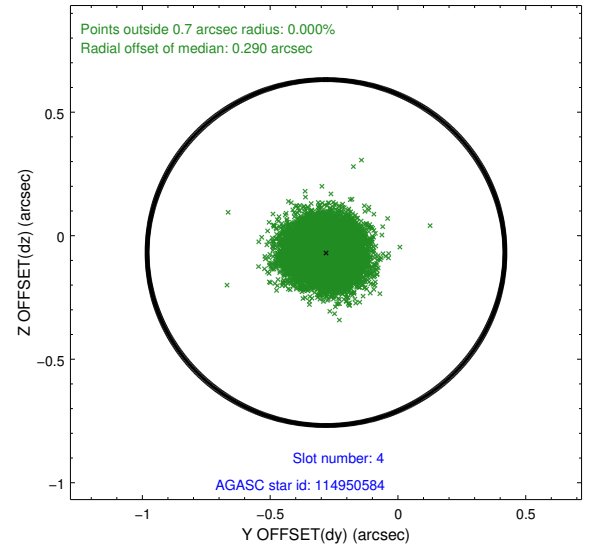
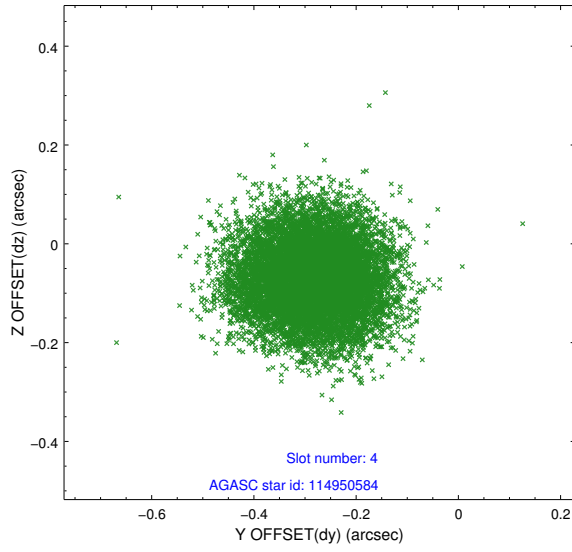
slot	status	used	id	mag	n_pts	med_dy	med_dz	dr1	dr2	ra	dec	mean_y	mean_z
0	FID		ACIS-S-2	7.11	4924	-0.173	-0.134	0.009	0.016	0.000000	0.000000	-769.06	-1739.68
1	FID		ACIS-S-4	7.22	4925	0.438	0.119	0.007	0.013	0.000000	0.000000	2144.76	168.85
2	FID		ACIS-S-5	7.23	4925	-0.296	0.024	0.010	0.017	0.000000	0.000000	-1821.78	162.66
3	GUIDE	used	114950168	7.84	9846	-0.152	0.189	0.092	0.151	187.143398	12.117441	2120.80	-801.21
4	GUIDE	used	114950584	9.18	9843	-0.282	-0.068	0.110	0.172	187.487323	11.827248	2117.02	797.44
5	GUIDE	used	114952824	8.56	9846	0.106	0.405	0.083	0.133	187.703904	12.486727	-174.63	-183.76
6	GUIDE	used	114954440	9.16	9839	0.073	0.021	0.151	0.246	186.915066	12.219118	2369.04	-1647.46
7	GUIDE	used	114955056	8.30	9846	0.251	-0.548	0.101	0.160	187.914001	12.127854	314.66	1220.83

2.4 Star Slots

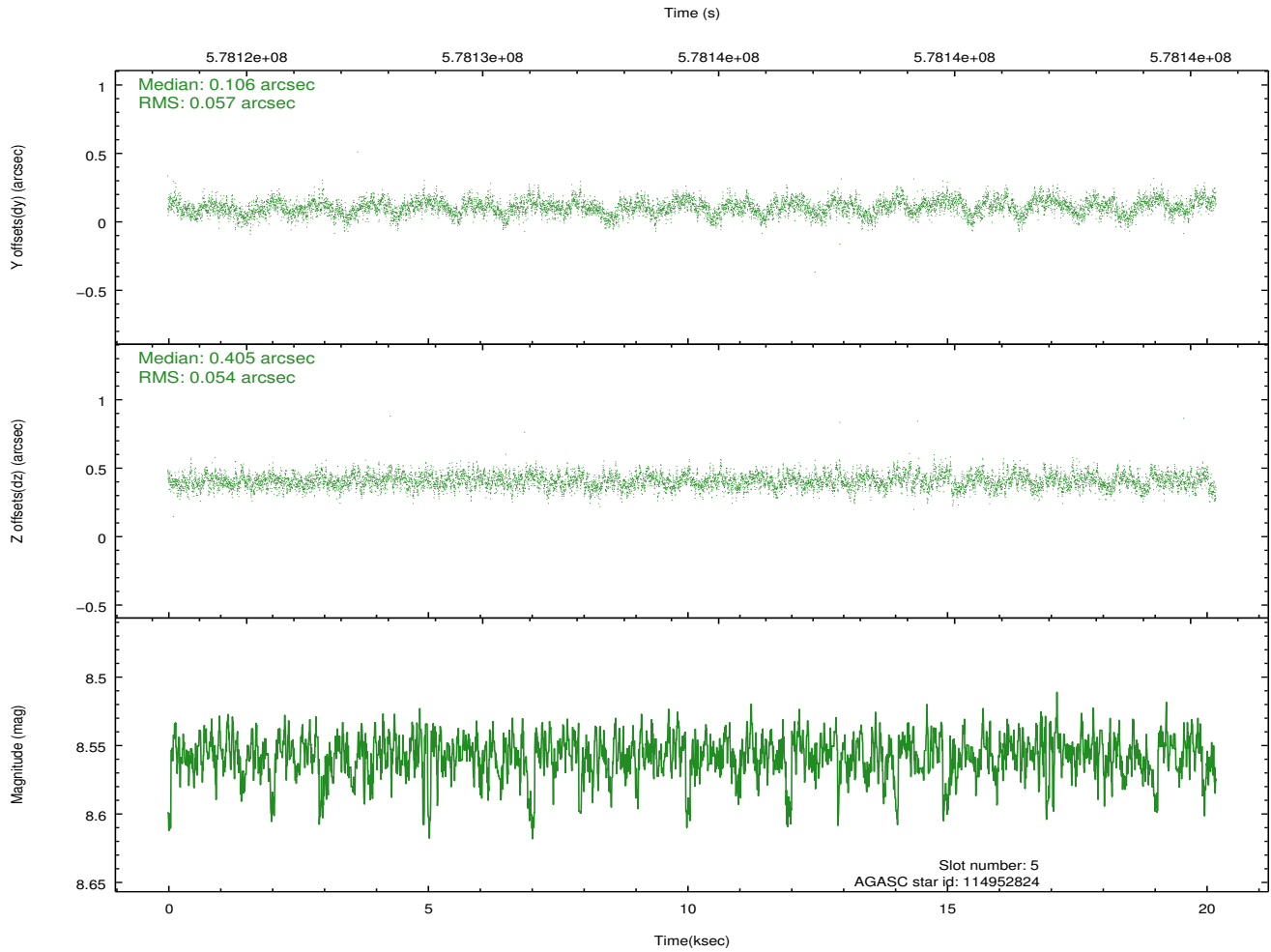
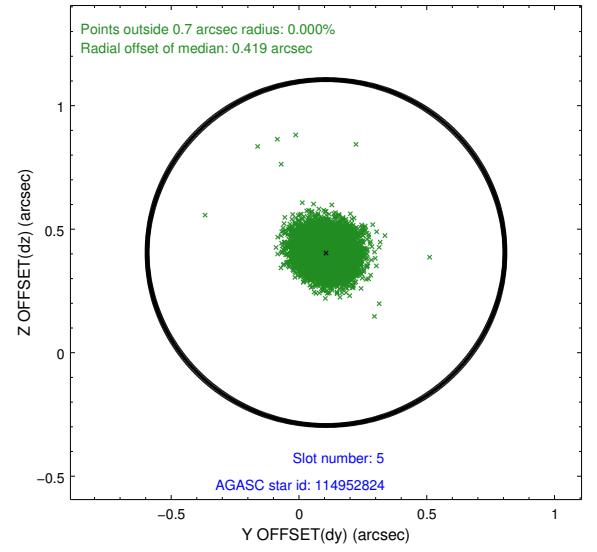
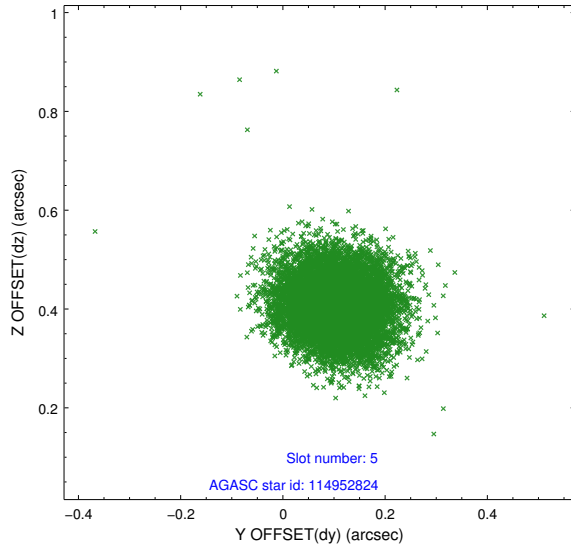
2.4.1 Slot 3



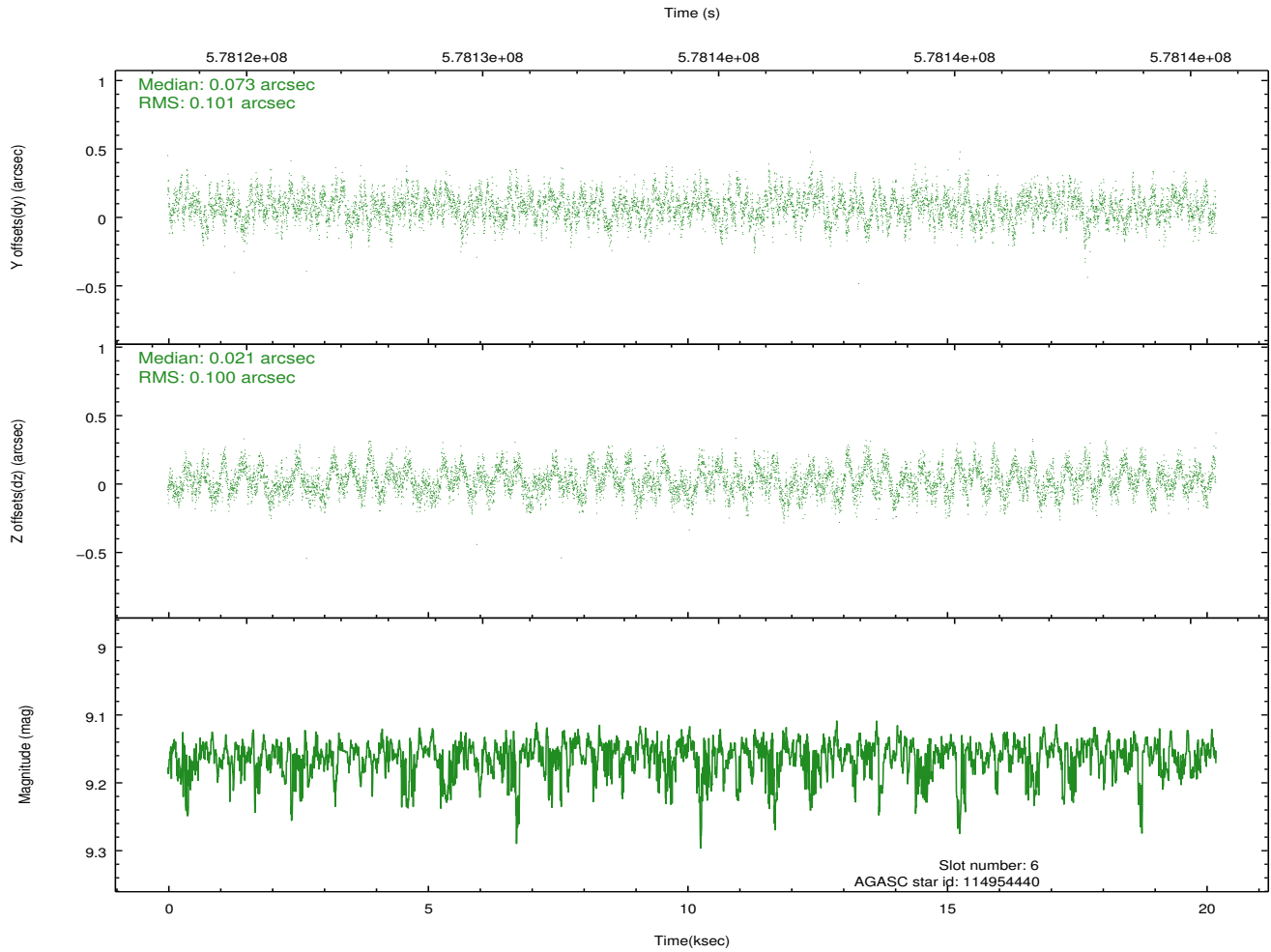
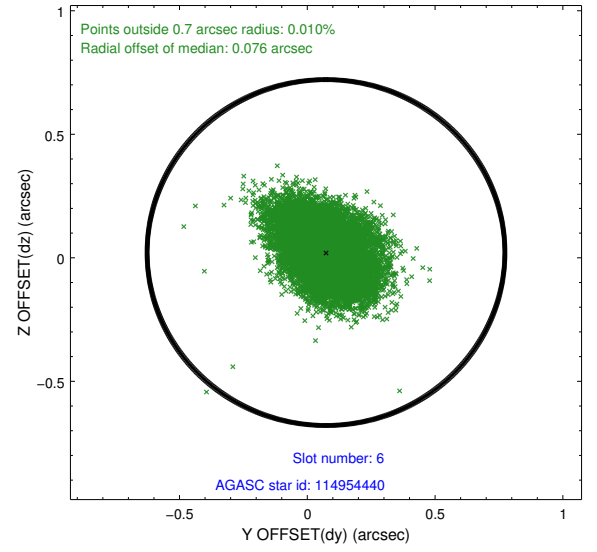
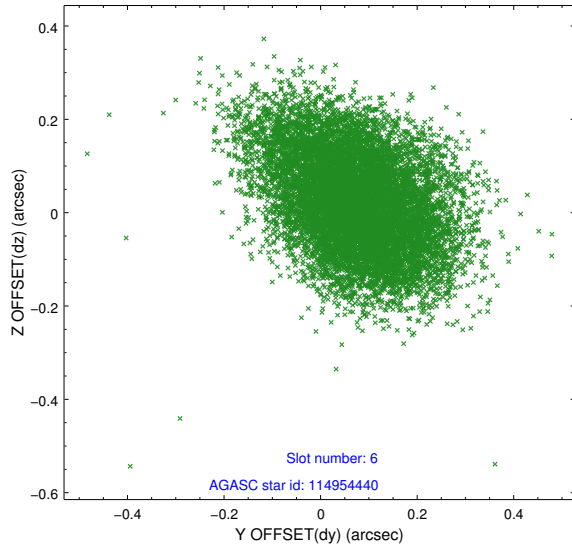
2.4.2 Slot 4



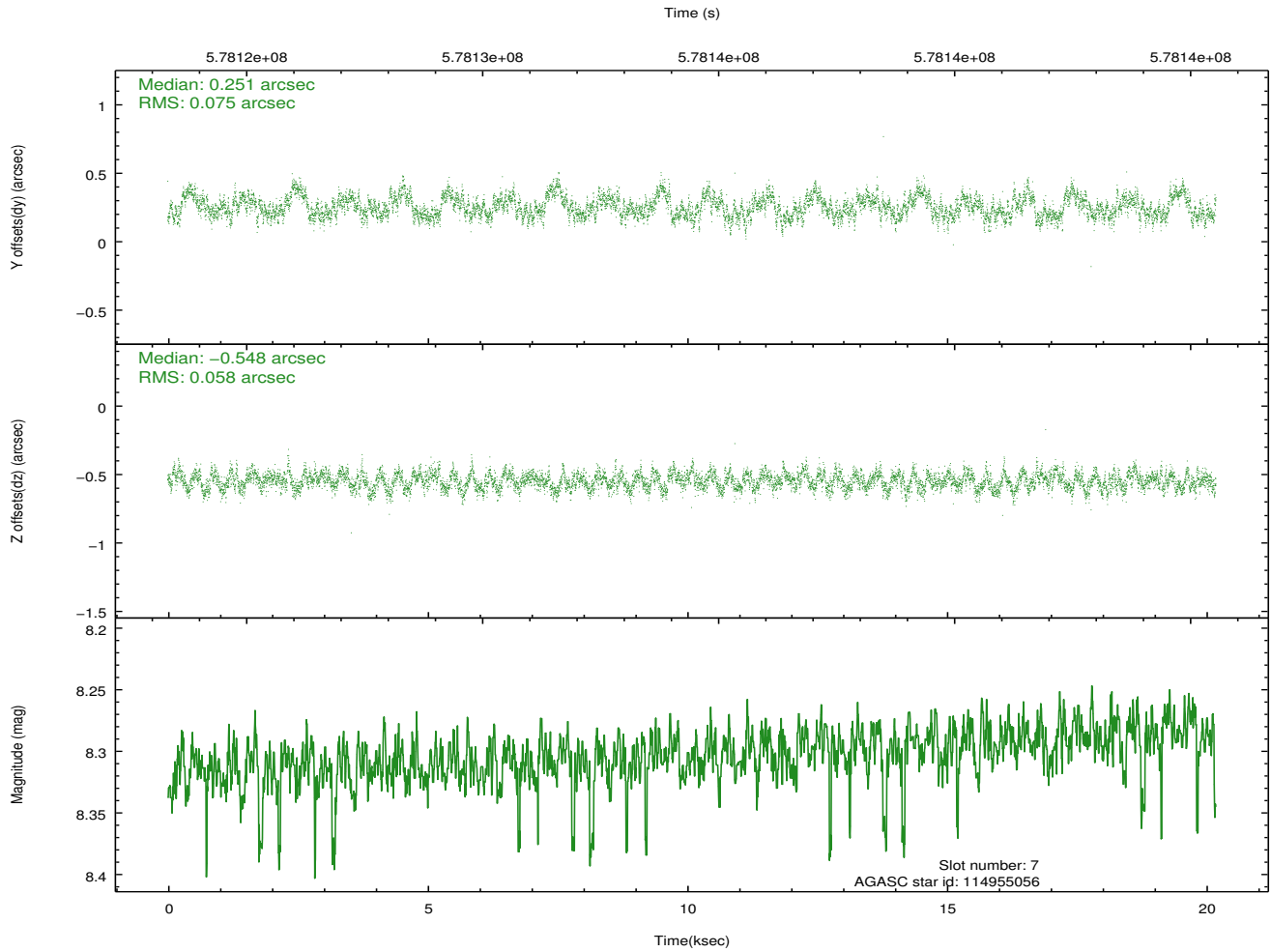
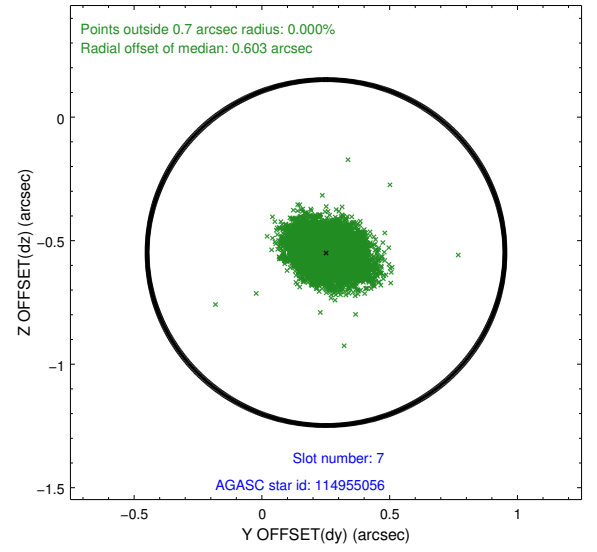
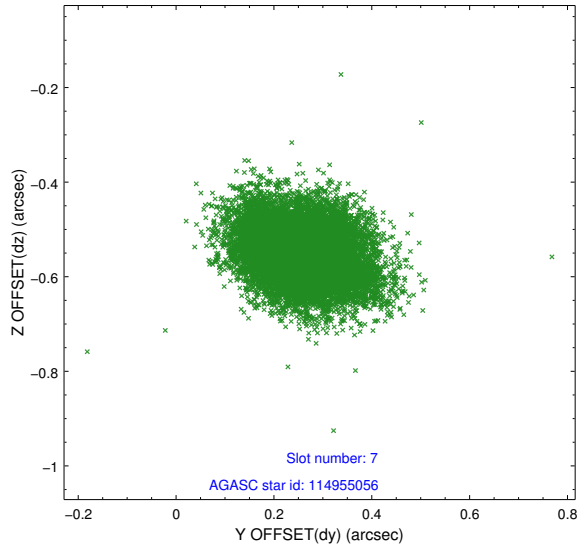
2.4.3 Slot 5



2.4.4 Slot 6

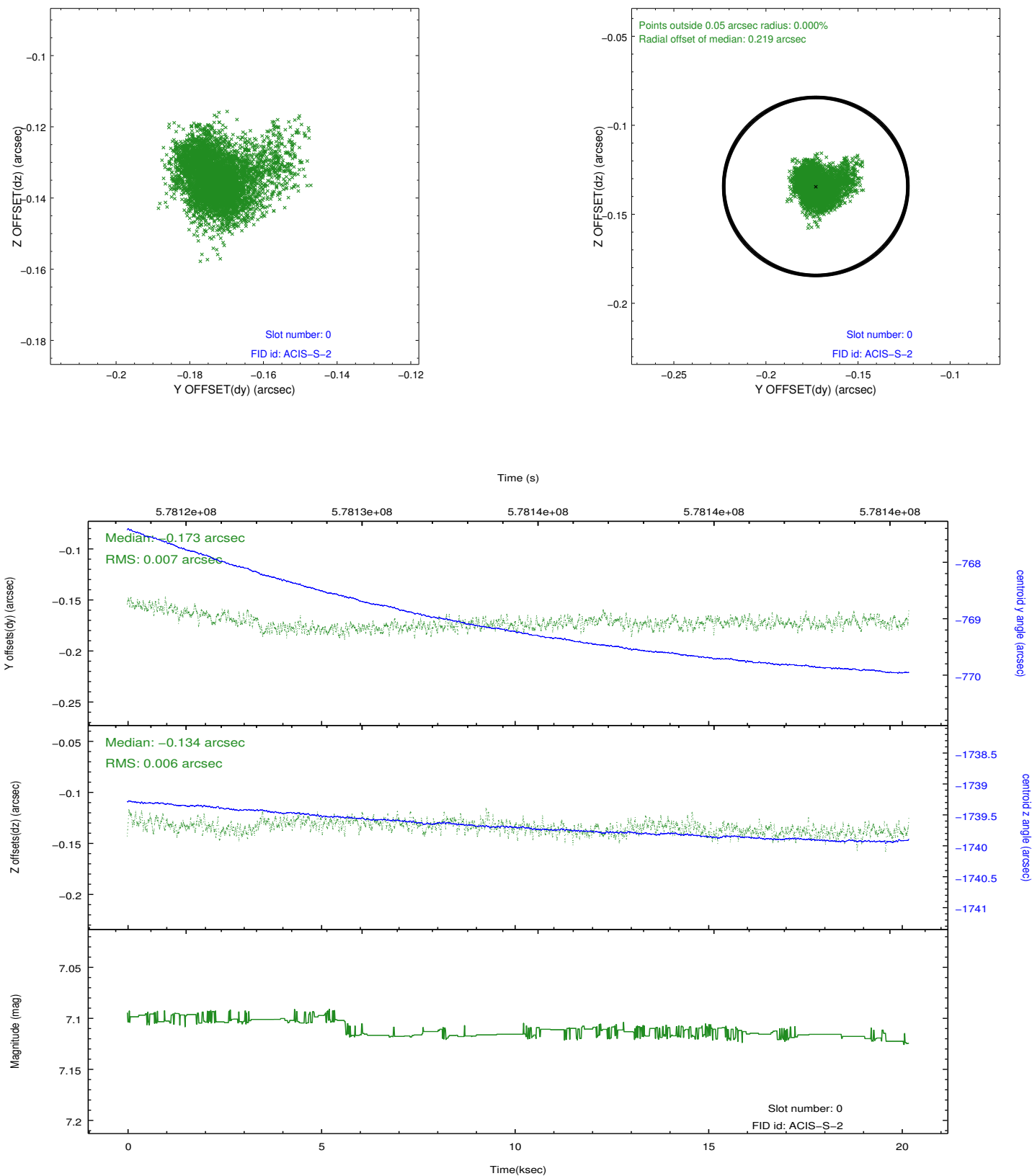


2.4.5 Slot 7

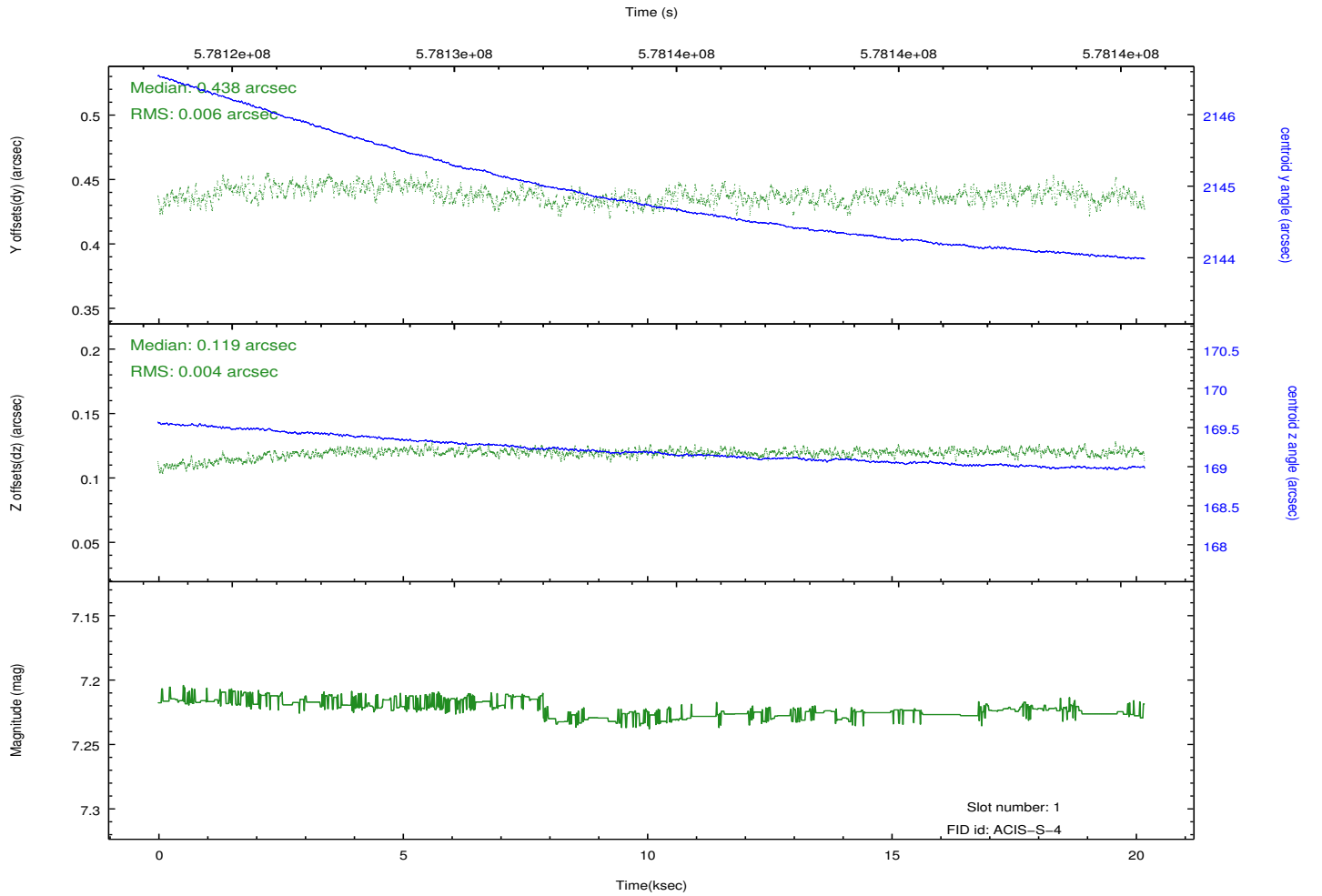
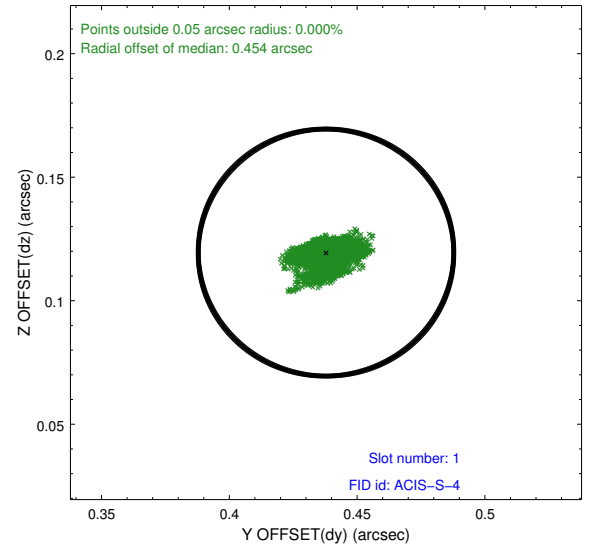
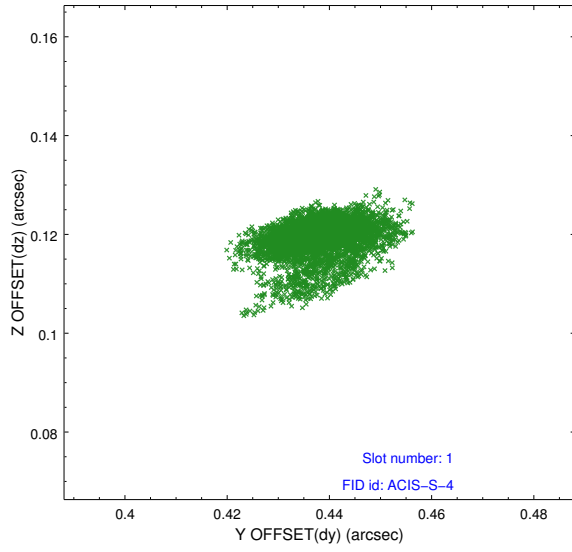


2.5 FID Slots

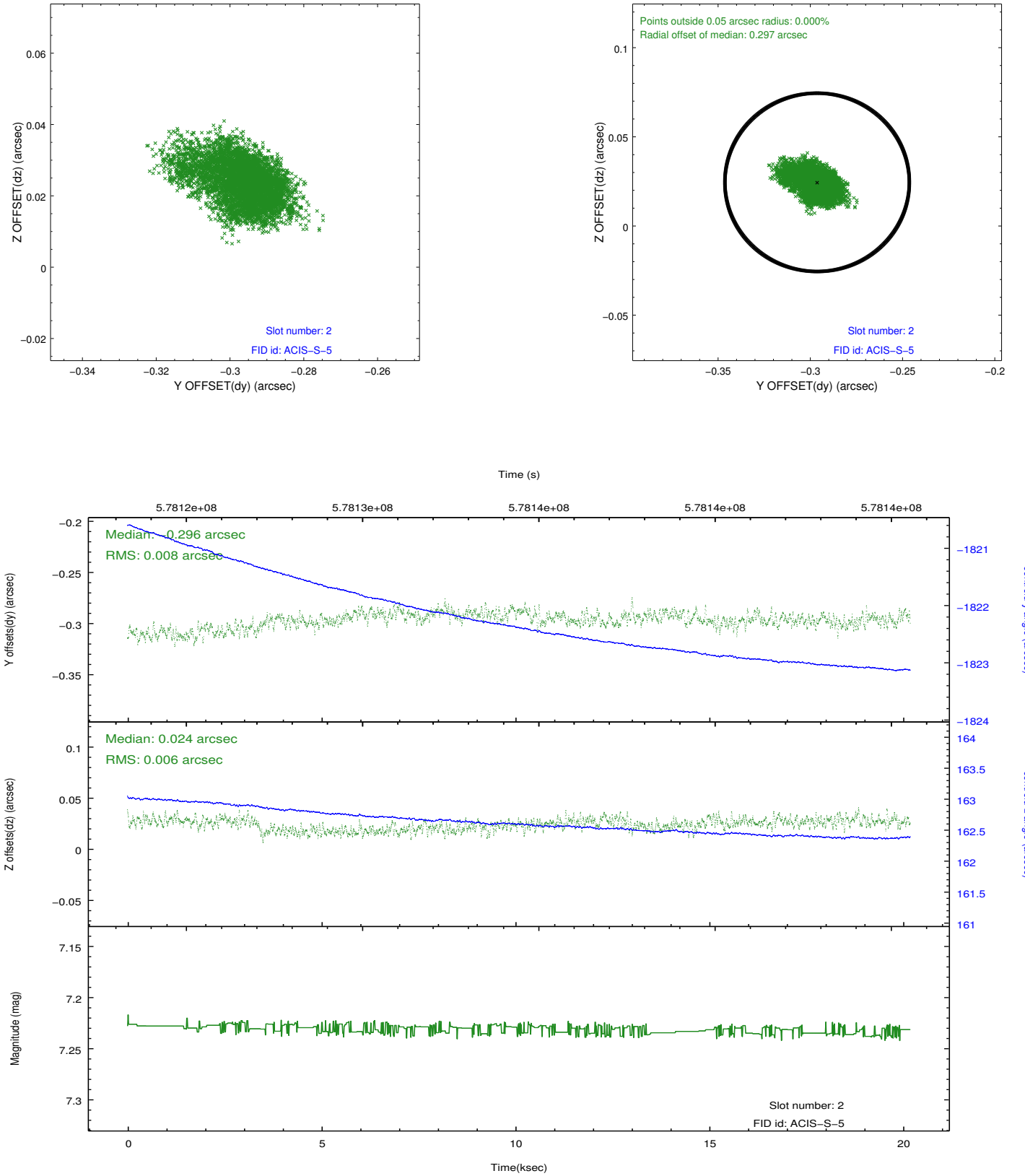
2.5.1 Slot 0



2.5.2 Slot 1



2.5.3 Slot 2



A Summary

A.1 Status

V&V Scientist	Joy Nichols
V&V Date (YYYY-MM-DD)	2016.04.28
V&V Edition	1
V&V Disposition and Status	OK
V&V Charge Time	20.069506979823

A.2 Comments