

V&V Reference Report

L2 ASCDS Version : 10.5

Observation 18872 - L2 Version 1
Chandra X-Ray Center

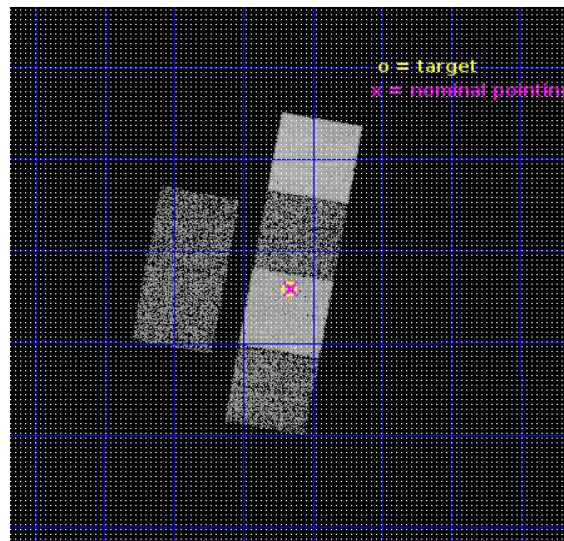
L2 Processing Date : Jun 20 2016

Contents

1	Front	2
2	OBI	3
2.1	OBI	3
2.1.1	Images	3
2.1.2	Bias	3
2.1.3	Parameters	4
2.1.4	Events	4
2.2	Compared Parameters	5
2.3	Aspect	6
2.4	Star Slots	9
2.4.1	Slot 3	9
2.4.2	Slot 4	10
2.4.3	Slot 5	11
2.4.4	Slot 6	12
2.4.5	Slot 7	13
2.5	FID Slots	14
2.5.1	Slot 0	14
2.5.2	Slot 1	15
2.5.3	Slot 2	16
A	Summary	17
A.1	Status	17
A.2	Comments	17

1 Front

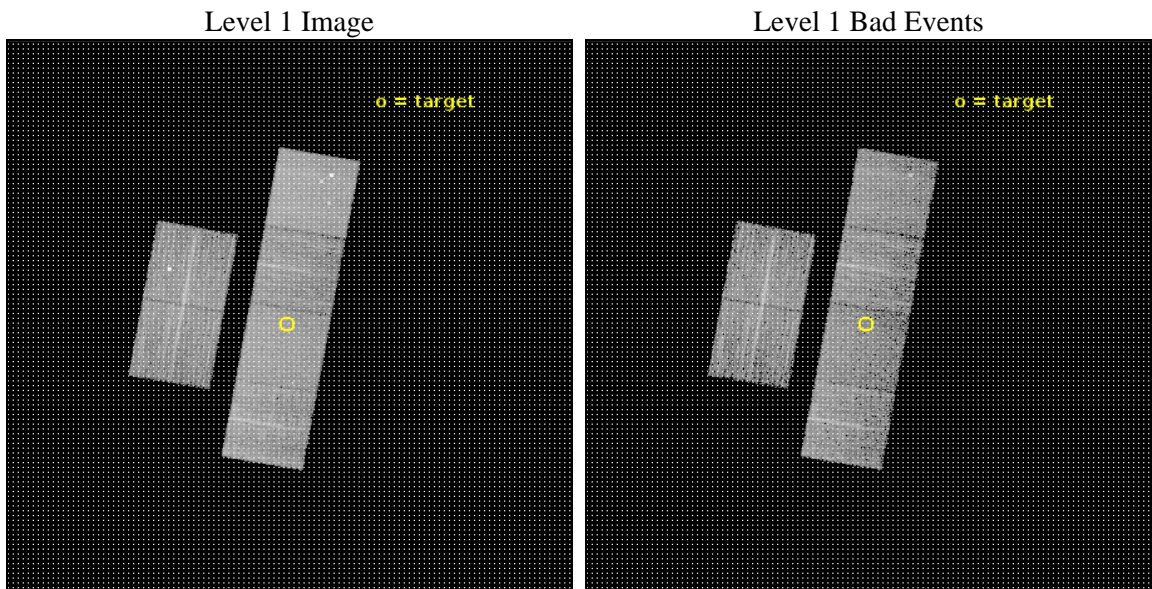
seq_num	703225	Sequence number
obs_id	18872	Observation id
title	Chandra Legacy Survey of Merger Driven AGN Activation in Nearby X-ray Selected AGN	Proposal title
observer	Dr Michael Koss	Principal investigator
object	2MASX J01283988+1445536	Source name
dtcycle	0	
cycle	P	events from which exps? Prim/Second/Both
ra_targ	22.16625	Observer's specified target RA [deg]
dec_targ	14.764944	Observer's specified target Dec [deg]
ra_nom	22.163524571016	Nominal RA [deg]
dec_nom	14.765303368289	Nominal Dec [deg]
roll_nom	100.15730100493	Nominal Roll [deg]
revision	1	Processing version of data
ontime	7440.0001108646	Sum of GTIs [s]
livetime	7345.7903496306	Livetime [s]
ontime2	7440.0001108646	Sum of GTIs [s]
ontime3	7440.0001108646	Sum of GTIs [s]
ontime5	7440.0001108646	Sum of GTIs [s]
ontime6	7440.0001108646	Sum of GTIs [s]
ontime7	7440.0001108646	Sum of GTIs [s]
ontime8	7440.0001108646	Sum of GTIs [s]
l2events	75498	Number of level 2 events



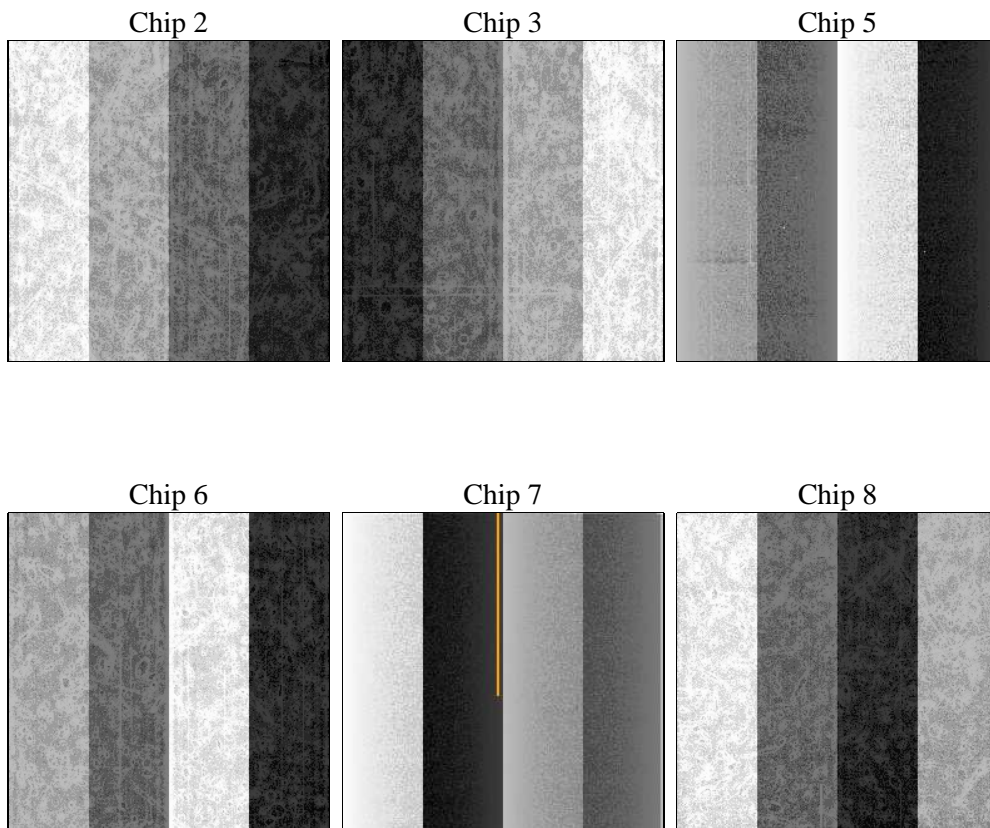
2 OBI

2.1 OBI

2.1.1 Images



2.1.2 Bias



2.1.3 Parameters

obi_num	0	Obi number	sched_exp_time	7500.000000	[s] Scheduled observation exposure time
ascdsver	10.5	Processing system revision	ontime	7440.0001108646	Sum of GTIs [s]
caldsver	4.7.2	 	ontime2	7440.0001108646	Sum of GTIs [s]
date	2016-06-20T05:40:09	Date and time of file creation	ontime3	7440.0001108646	Sum of GTIs [s]
revision	1	Processing version of data	ontime5	7440.0001108646	Sum of GTIs [s]
			ontime6	7440.0001108646	Sum of GTIs [s]
			ontime7	7440.0001108646	Sum of GTIs [s]
			ontime8	7440.0001108646	Sum of GTIs [s]
			l1events	342011	Number of level 1 events

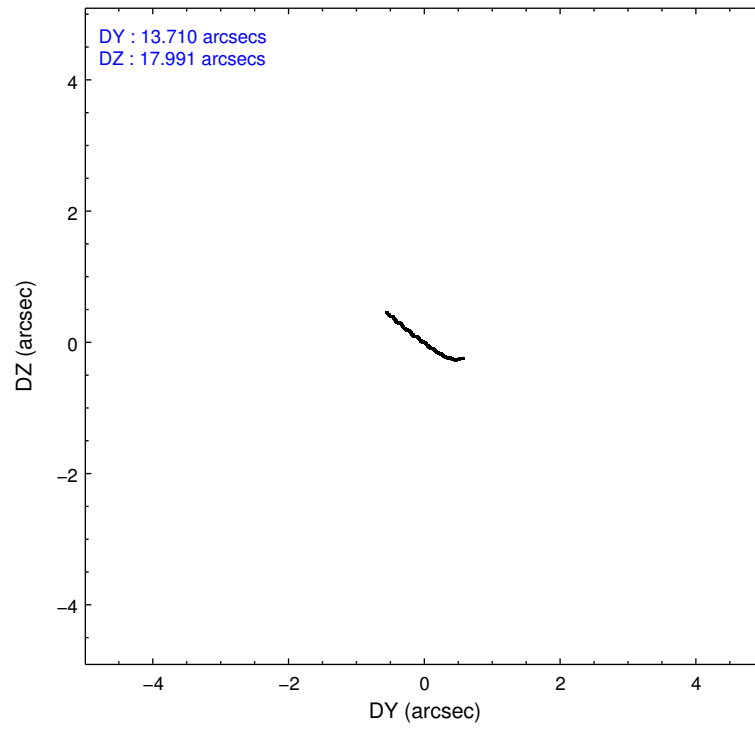
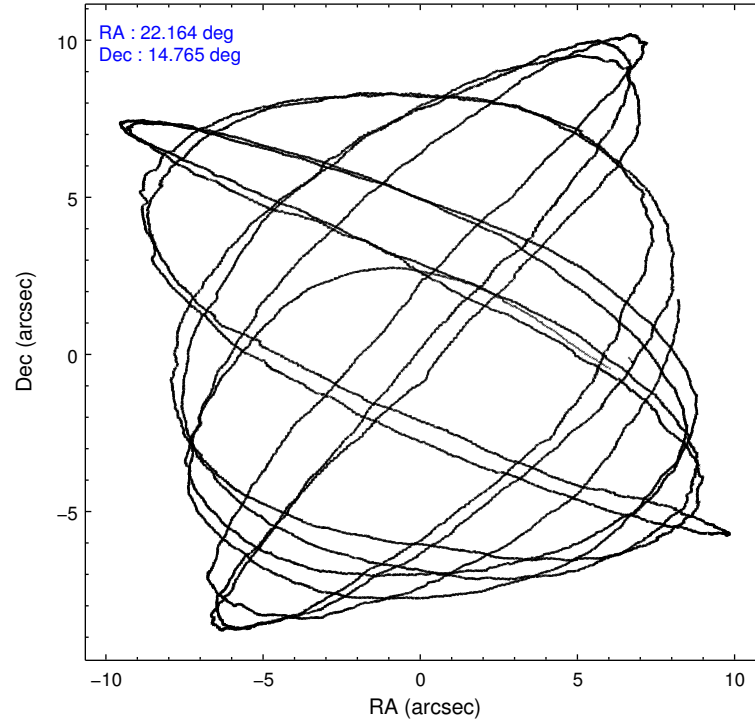
2.1.4 Events

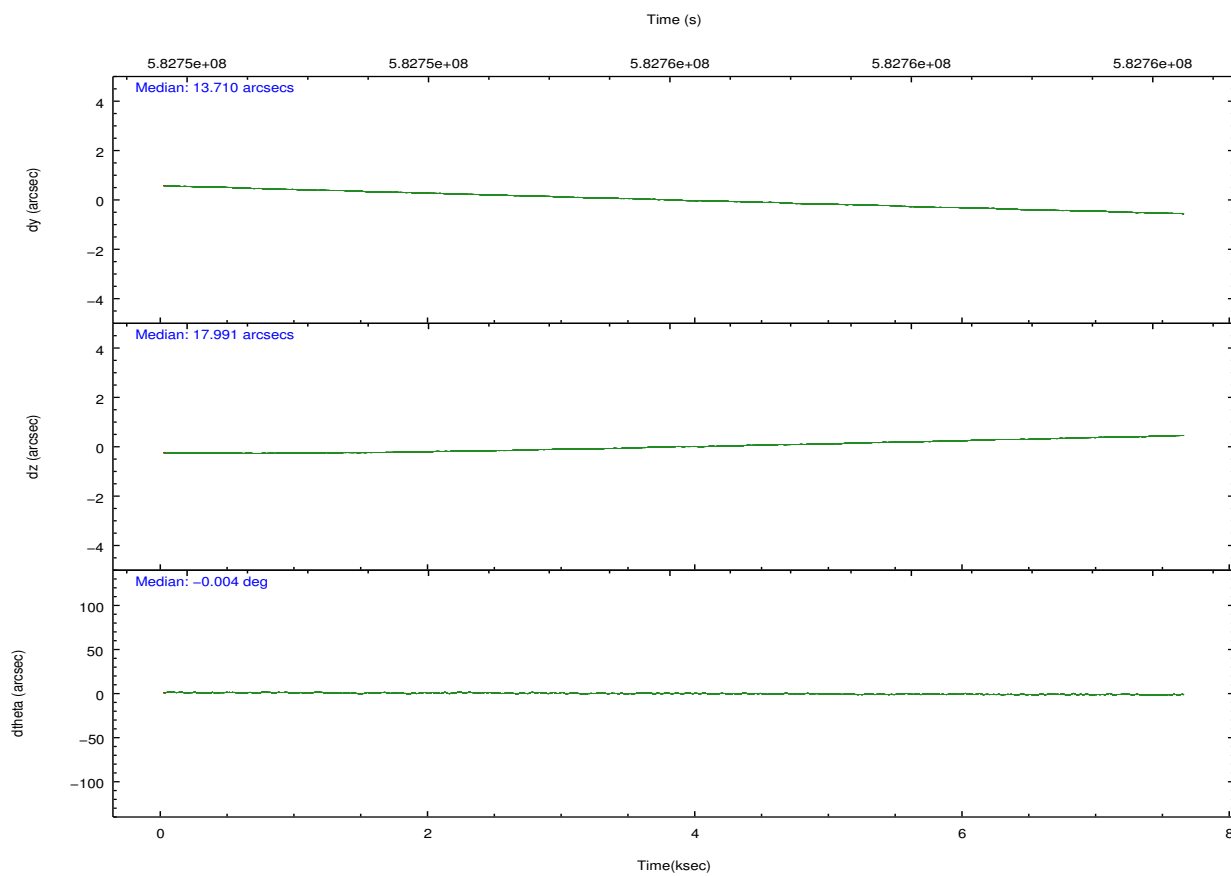
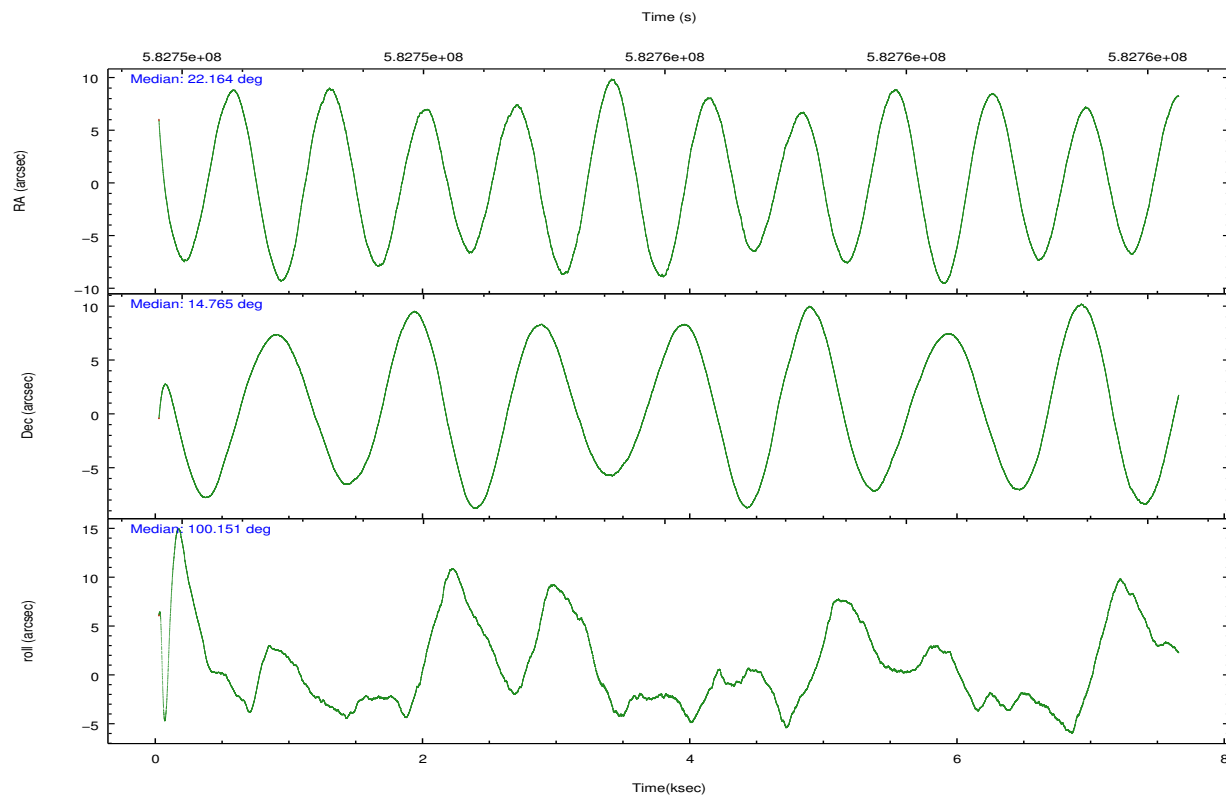
	ccd 2	ccd 3	ccd 5	ccd 6	ccd 7	ccd 8		ccd 2	ccd 3	ccd 5	ccd 6	ccd 7	ccd 8
level 1 events	52128	45333	75887	47305	60840	60518	grade 0 events	3858	1622	3924	1624	2094	4155
rejected events	45157	40665	39161	42012	35162	45402		7%	3%	5%	3%	3%	6%
rejected %	86%	89%	51%	88%	57%	75%	grade 1 events	47	20	574	19	73	28
								0%	0%	0%	0%	0%	0%
							grade 2 events	1156	959	11118	1320	5553	3785
								2%	2%	14%	2%	9%	6%
							grade 3 events	486	524	973	498	1871	1523
								0%	1%	1%	1%	3%	2%
							grade 4 events	505	509	970	522	1912	1504
								0%	1%	1%	1%	3%	2%
							grade 5 events	1775	2154	4774	2003	5750	3101
								3%	4%	6%	4%	9%	5%
							grade 6 events	971	1054	19749	1333	14259	4150
								1%	2%	26%	2%	23%	6%
							grade 7 events	43330	38491	33805	39986	29328	42272
								83%	84%	44%	84%	48%	69%

2.2 Compared Parameters

Parameter	Planned	Actual	Parameter	Planned	Actual
Instrument	ACIS	ACIS	Obspar format version number	7	7
Detector	ACIS-235678	ACIS-235678	Obspar file type	PREDICTED	ACTUAL
Grating	NONE	NONE	Obspar update status	NONE	UPDATED
Data mode	FAINT	FAINT	CCD I0 on	N	N
Observation mode	POINTING	POINTING	CCD I1 on	N	N
[deg] Pointing RA	22.182124	22.16352457101641	CCD I2 on	O2	Y
[deg] Pointing Dec	14.744645	14.76530336828856	CCD I3 on	O3	Y
[deg] Pointing Roll	99.995955	100.157301004932	CCD S0 on	N	N
[mm] SIM focus pos	-0.684267	-0.6828225247311905	CCD S1 on	O1	Y
[mm] SIM defocus	0	0.001444936568705701	CCD S2 on	O4	Y
[mm] SIM translation stage pos	-190.132523	-190.1425803651734	CCD S3 on	Y	Y
[mm] SIM translation stage offset	0	0.01005778216563158	CCD S4 on	O5	Y
[s] Observation start time (MET)	582752351.184000	582751075.74228	CCD S5 on	N	N
Observation start date	2016-06-19T19:38:03	2016-06-19T19:17:55	Number of optional ACIS chips dropped	0	0
[s] Observation end time (MET)	582759851.184000	582760755.33034	On-chip summing requested	N	N
Observation end date	2016-06-19T21:43:03	2016-06-19T21:59:15	Subarray requested	NONE	NONE
Read mode	TIMED	TIMED	Alternating exposures requested	N	N
			[s] Primary exposure time	0.000000	3.2

2.3 Aspect



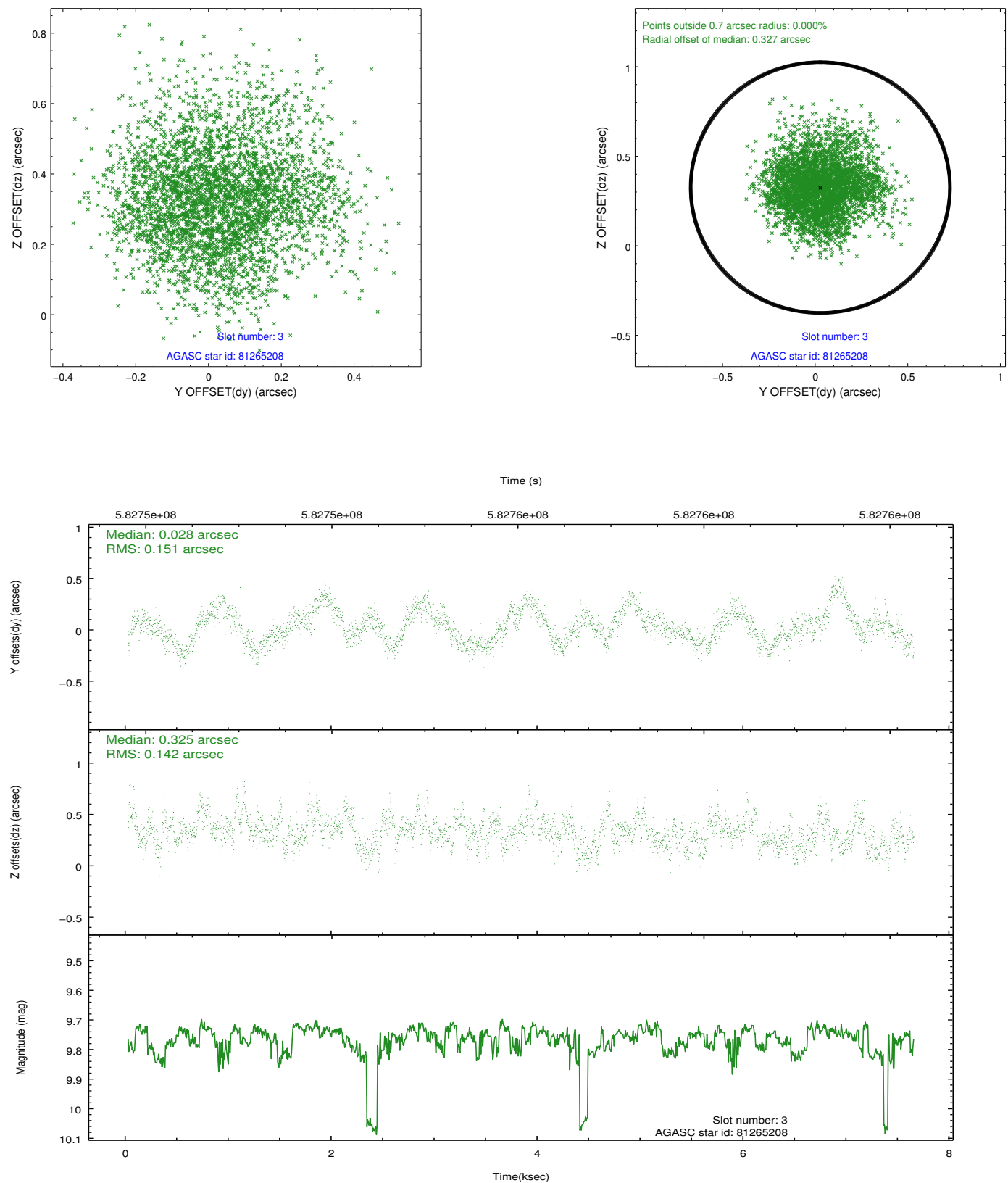


Slot Statistics

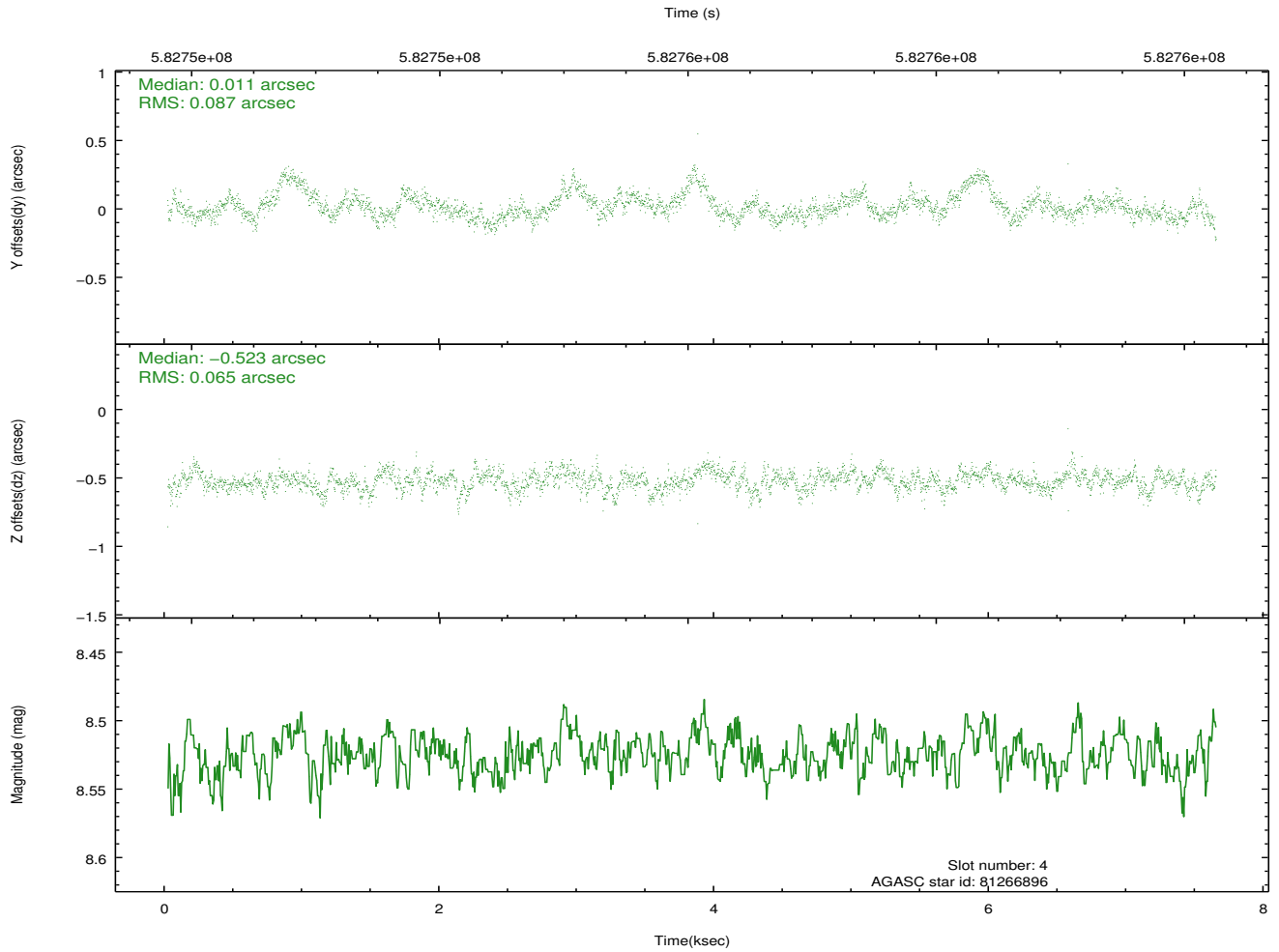
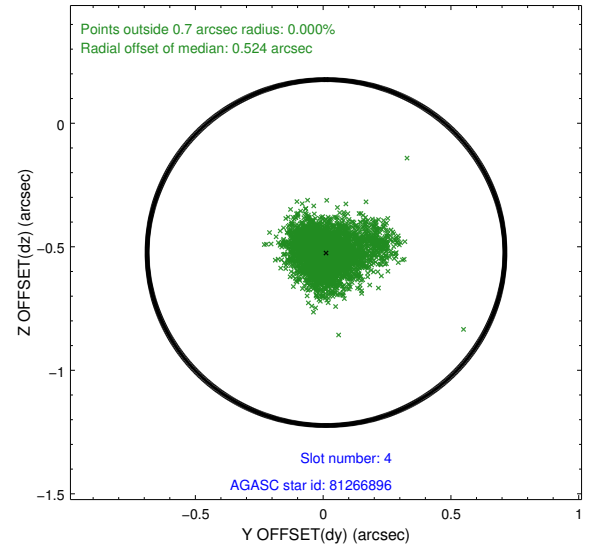
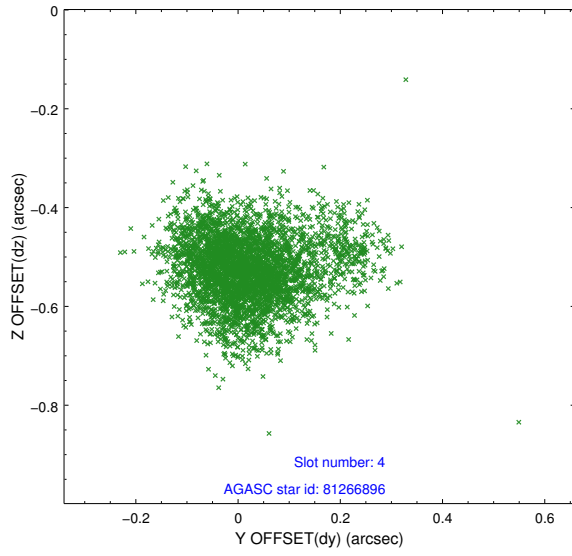
slot	status	used	id	mag	n_pts	med_dy	med_dz	dr1	dr2	ra	dec	mean_y	mean_z
0	FID		ACIS-S-2	7.12	1862	-0.140	-0.129	0.014	0.023	0.000000	0.000000	-766.80	-1739.54
1	FID		ACIS-S-4	7.23	1862	0.432	0.103	0.015	0.024	0.000000	0.000000	2146.72	168.38
2	FID		ACIS-S-5	7.24	1862	-0.321	0.037	0.011	0.020	0.000000	0.000000	-1818.85	162.85
3	GUIDE	used	81265208	9.76	3720	0.028	0.325	0.224	0.350	22.703528	14.791484	-146.07	-1816.35
4	GUIDE	used	81266896	8.52	3720	0.011	-0.523	0.110	0.204	22.078642	14.476479	-887.51	521.98
5	GUIDE	used	81267136	10.47	3684	-0.219	-0.390	0.368	0.663	21.590719	14.914605	962.27	1919.53
6	GUIDE	used	81270096	9.14	3721	0.352	0.355	0.129	0.202	22.472690	14.209616	-2071.11	-663.34
7	GUIDE	used	157028840	6.74	3723	-0.144	0.234	0.118	0.188	22.695967	15.021613	673.45	-1932.36

2.4 Star Slots

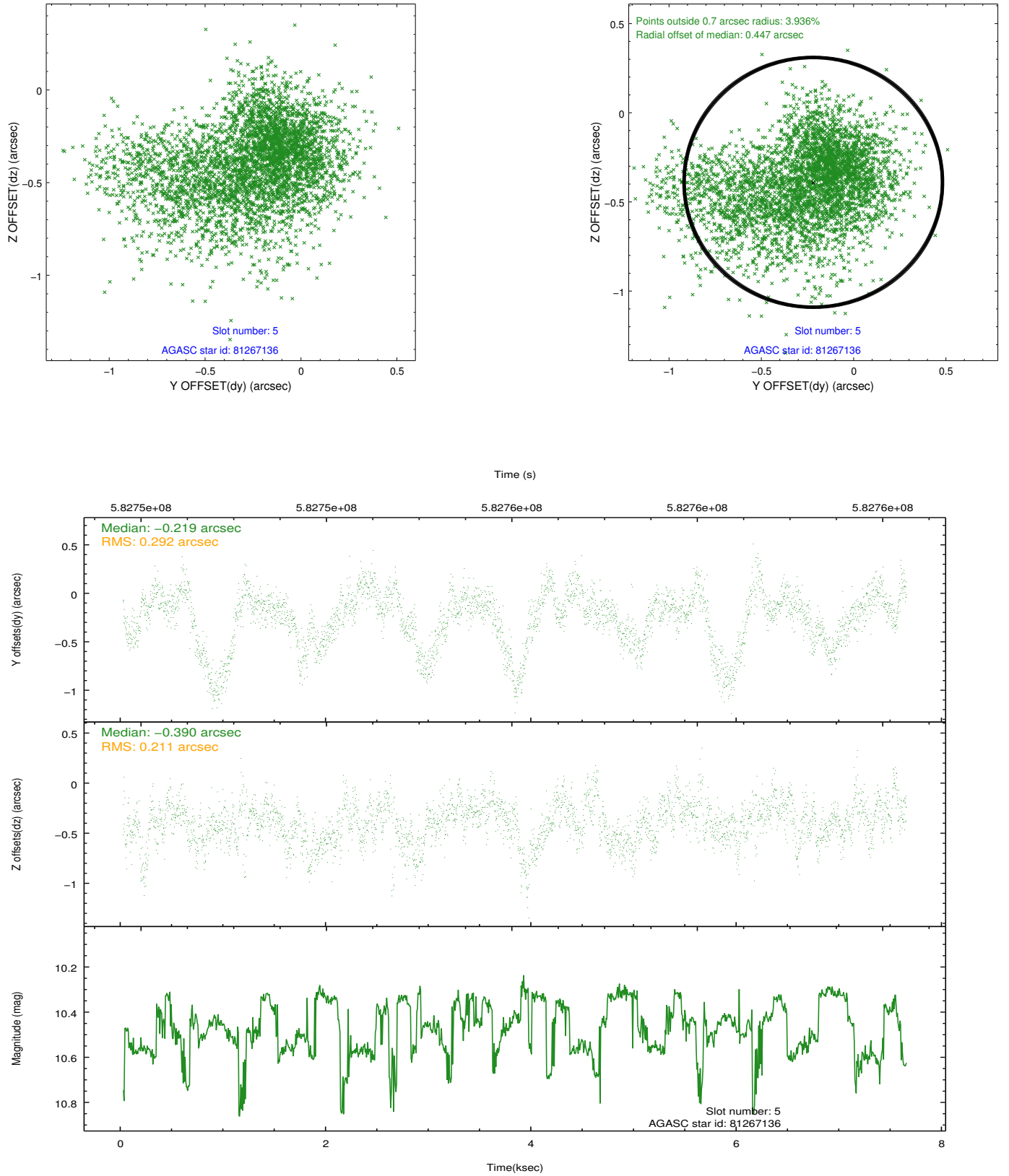
2.4.1 Slot 3



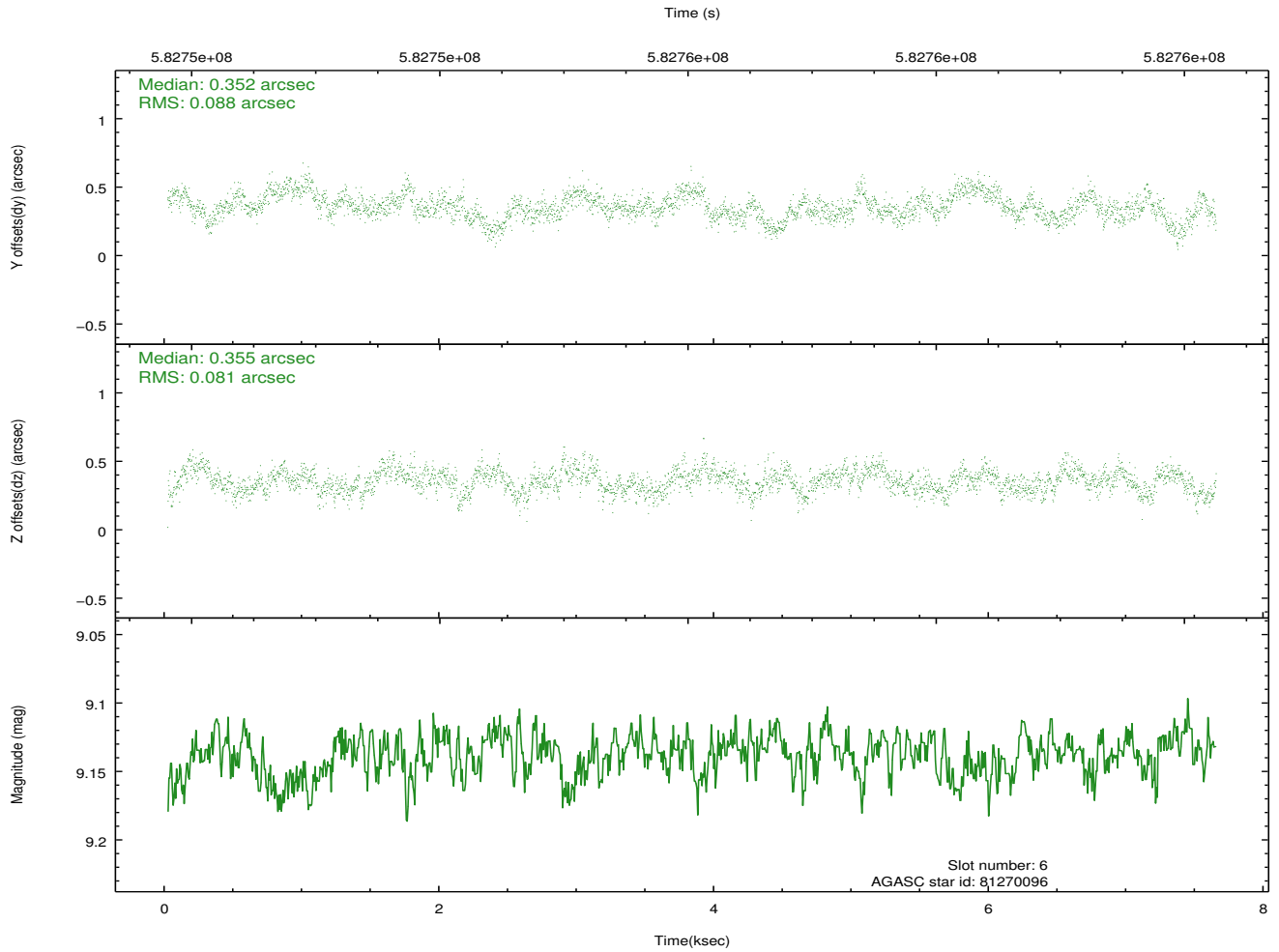
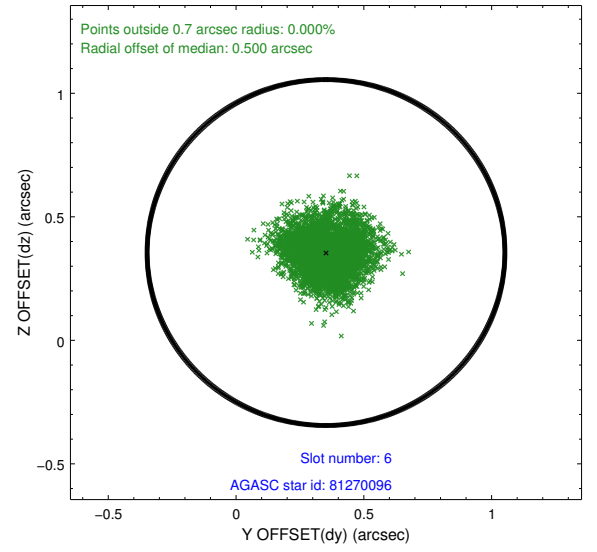
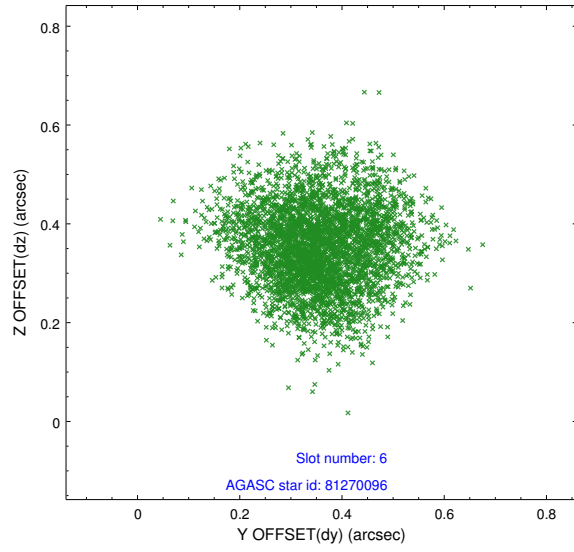
2.4.2 Slot 4



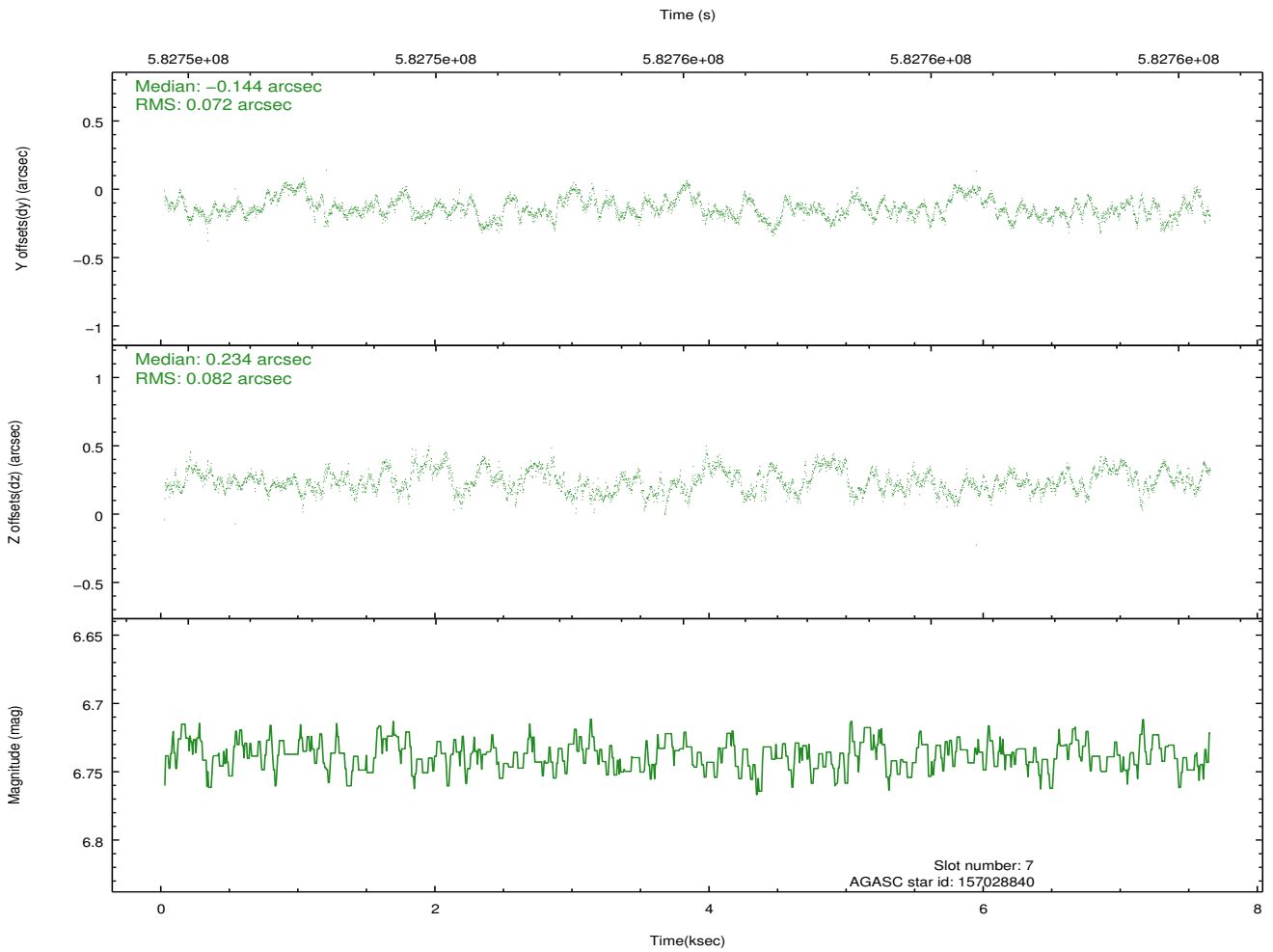
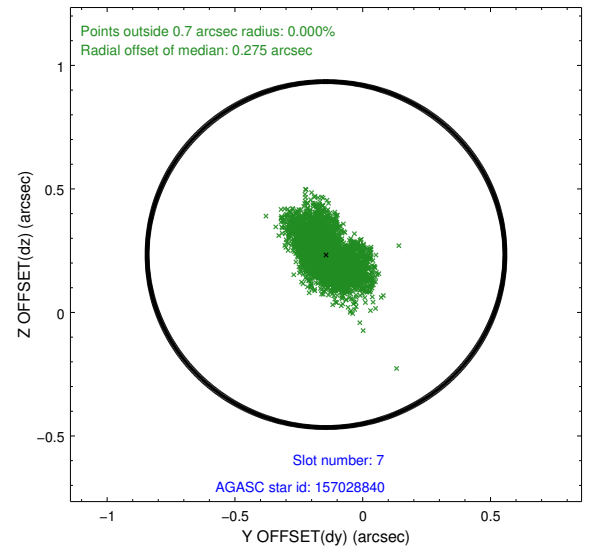
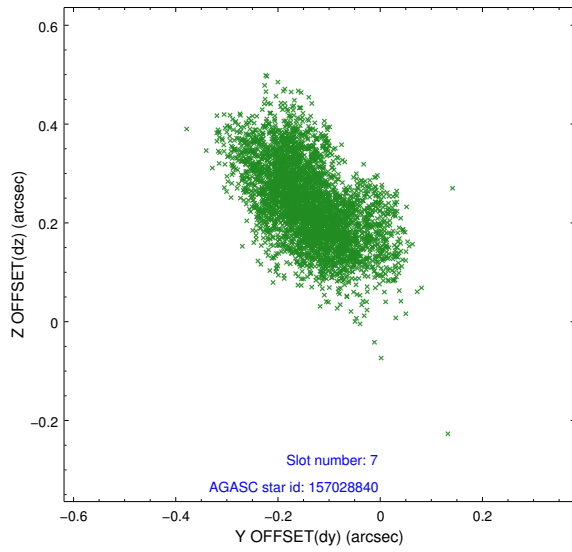
2.4.3 Slot 5



2.4.4 Slot 6

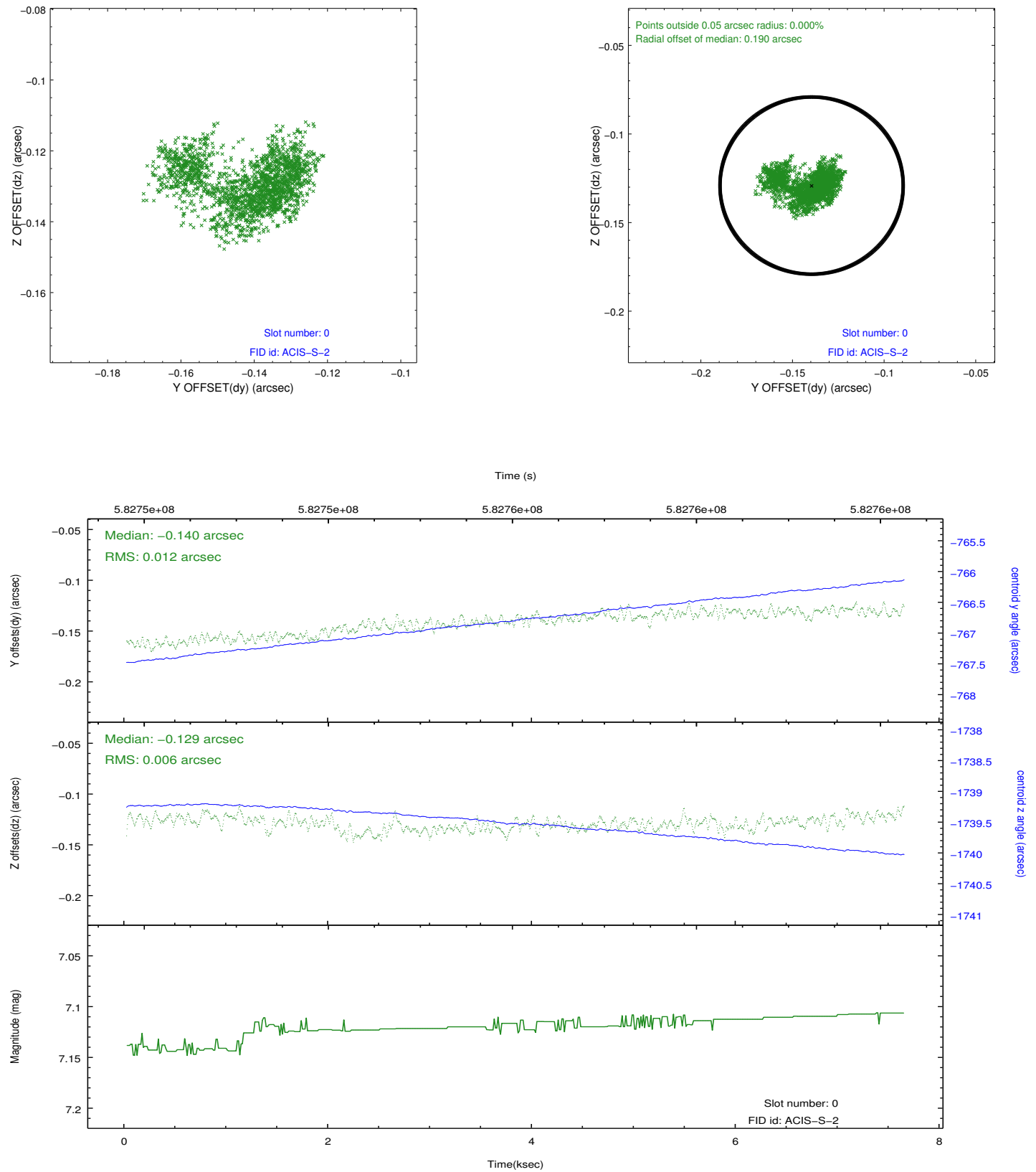


2.4.5 Slot 7

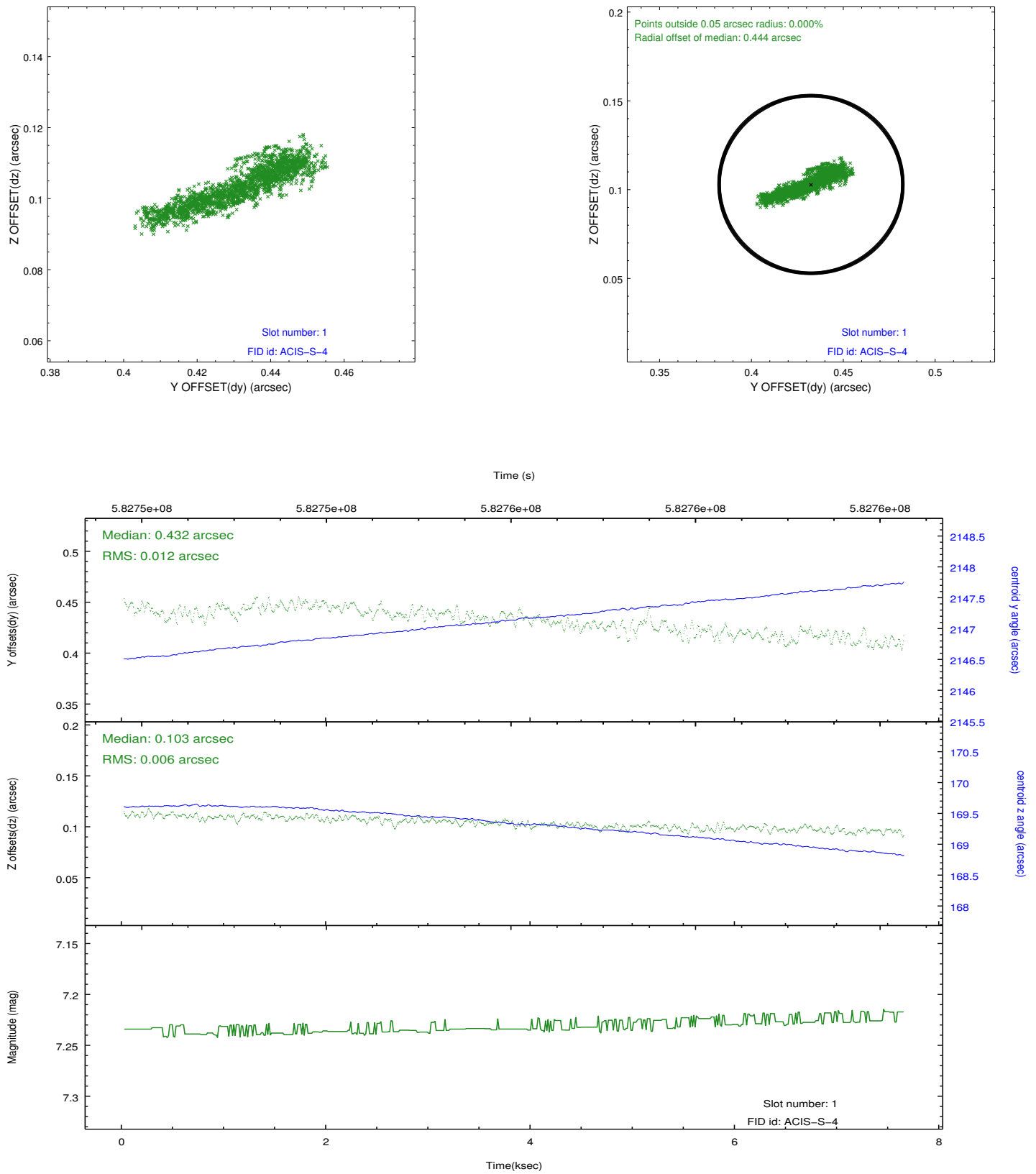


2.5 FID Slots

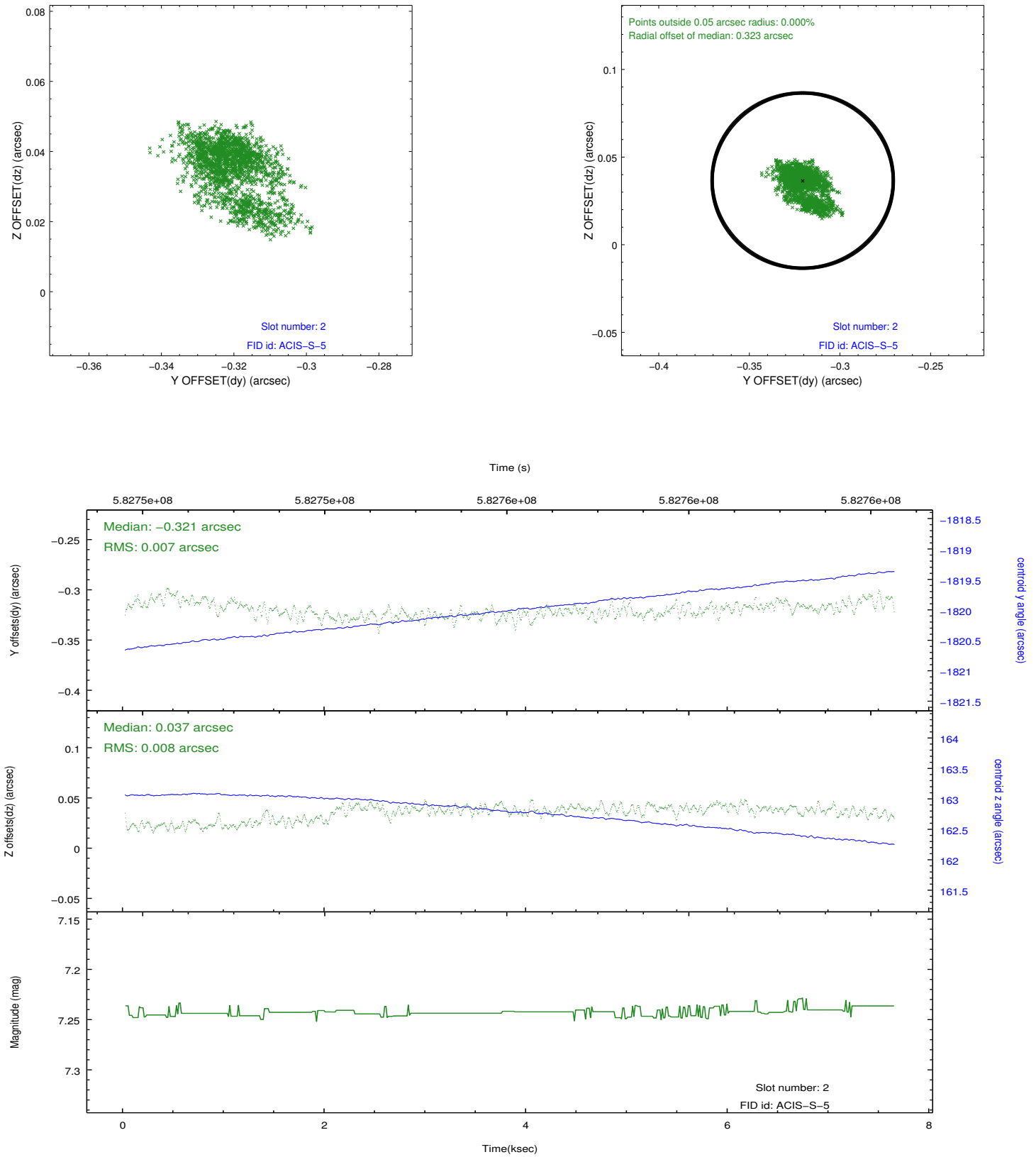
2.5.1 Slot 0



2.5.2 Slot 1



2.5.3 Slot 2



A Summary

A.1 Status

V&V Scientist	Joy Nichols
V&V Date (YYYY-MM-DD)	2016.06.20
V&V Edition	1
V&V Disposition and Status	OK
V&V Charge Time	7.4400001108646

A.2 Comments