

# V&V Reference Report

## L2 ASCDS Version : 10.4.2.1

Observation 18142 - L2 Version 1  
Chandra X-Ray Center

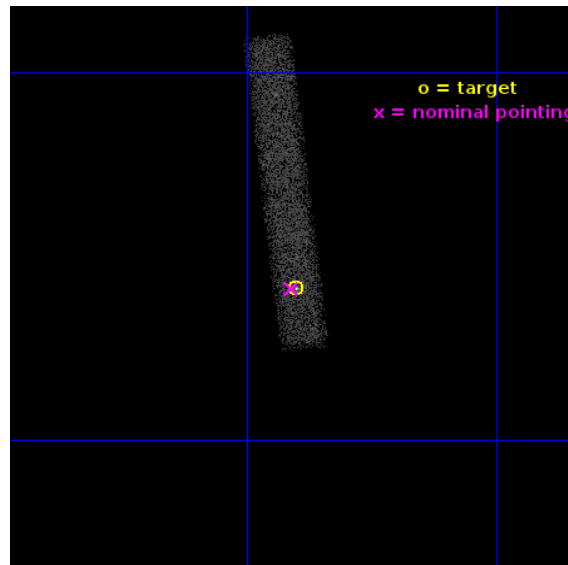
L2 Processing Date : Nov 26 2015

## Contents

<b>1</b>	<b>Front</b>	<b>2</b>
<b>2</b>	<b>OBI</b>	<b>3</b>
2.1	OBI . . . . .	3
2.1.1	Images . . . . .	3
2.1.2	Bias . . . . .	3
2.1.3	Parameters . . . . .	4
2.1.4	Events . . . . .	4
2.2	Compared Parameters . . . . .	5
2.3	Aspect . . . . .	6
2.4	Star Slots . . . . .	9
2.4.1	Slot 3 . . . . .	9
2.4.2	Slot 4 . . . . .	10
2.4.3	Slot 5 . . . . .	11
2.4.4	Slot 6 . . . . .	12
2.4.5	Slot 7 . . . . .	13
2.5	FID Slots . . . . .	14
2.5.1	Slot 0 . . . . .	14
2.5.2	Slot 1 . . . . .	15
2.5.3	Slot 2 . . . . .	16
<b>A</b>	<b>Summary</b>	<b>17</b>
A.1	Status . . . . .	17
A.2	Comments . . . . .	17

# 1 Front

seq_num	703208	Sequence number
obs_id	18142	Observation id
title	Studying Dual AGN Activity and Obscuration in the Final Merger Stage (	Proposal title
observer	Dr Michael Koss	Principal investigator
object	2MASX J01392400+2924067	Source name
dtcycle	0	&#160
cycle	P	events from which exps? Prim/Second/Both
ra_targ	24.85	Observer's specified target RA [deg]
dec_targ	29.401944	Observer's specified target Dec [deg]
ra_nom	24.852493591523	Nominal RA [deg]
dec_nom	29.401764895102	Nominal Dec [deg]
roll_nom	263.38893413684	Nominal Roll [deg]
revision	1	Processing version of data
ontime	25069.196854711	Sum of GTIs [s]
livetime	22736.438286514	Livetime [s]
ontime7	25069.196854711	Sum of GTIs [s]
l2events	14120	Number of level 2 events

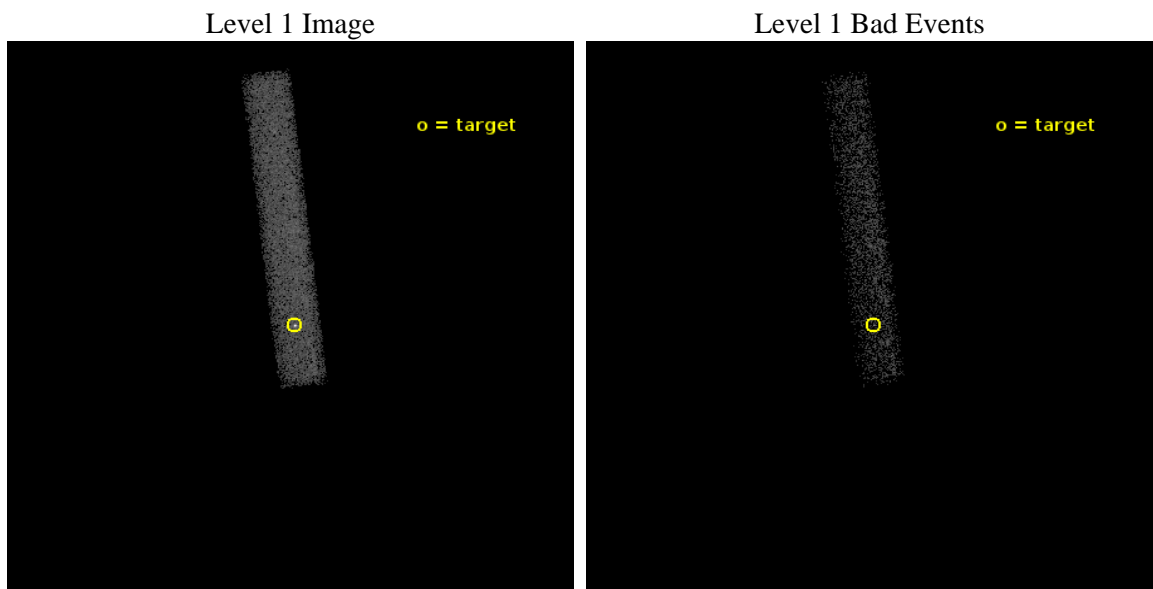




## 2 OBI

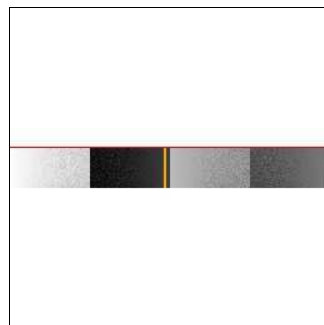
### 2.1 OBI

#### 2.1.1 Images



#### 2.1.2 Bias

Chip 7



### 2.1.3 Parameters

obi_num	1	Obi number	sched_exp_time	25000.000000	[s] Scheduled observation exposure time
ascdsver	10.4.2.1	Processing system revision	ontime	25069.196854711	Sum of GTIs [s]
caldsver	4.6.10a	&#160	ontime7	25069.196854711	Sum of GTIs [s]
date	2015-11-26T05:33:30	Date and time of file creation	l1events	27845	Number of level 1 events
revision	1	Processing version of data			

### 2.1.4 Events

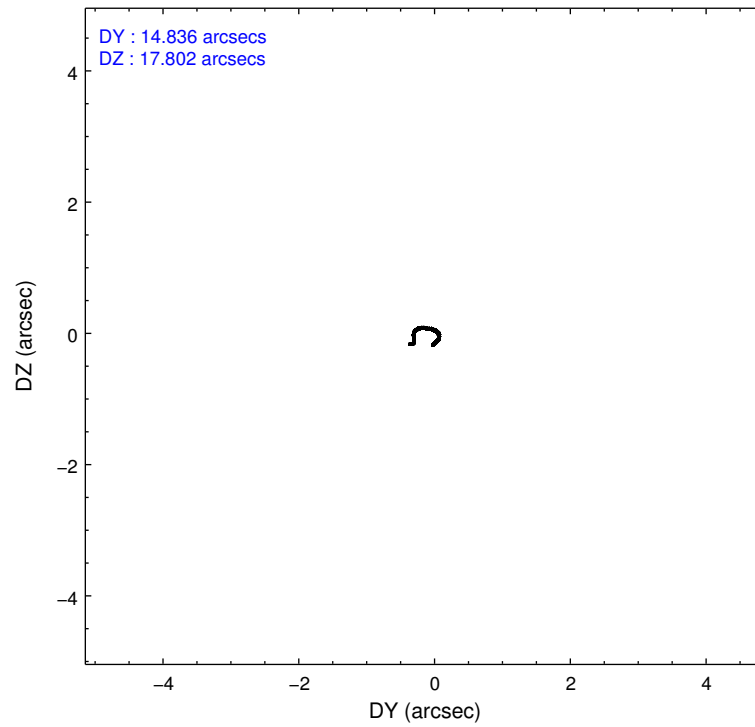
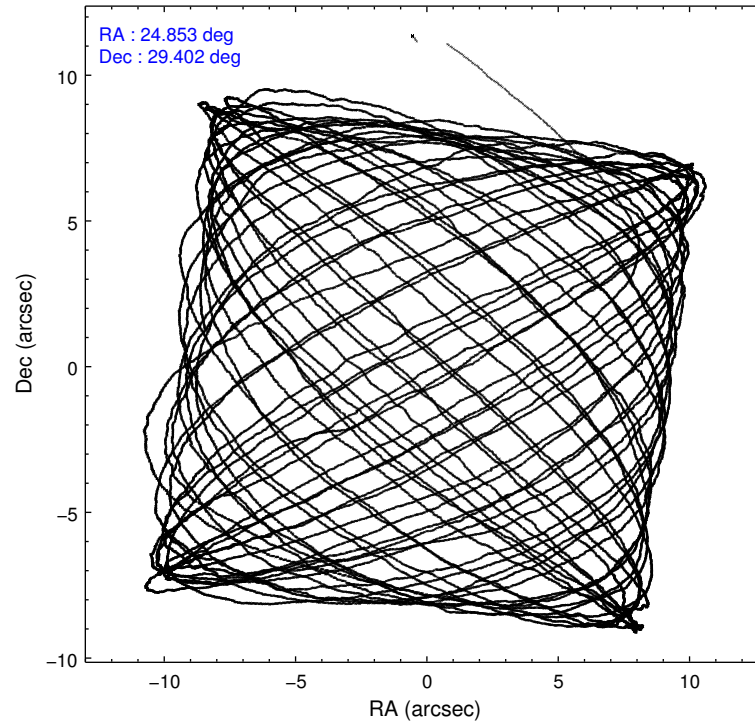
	<b>ccd 7</b>
level 1 events	27845
rejected events	13224
rejected %	47%

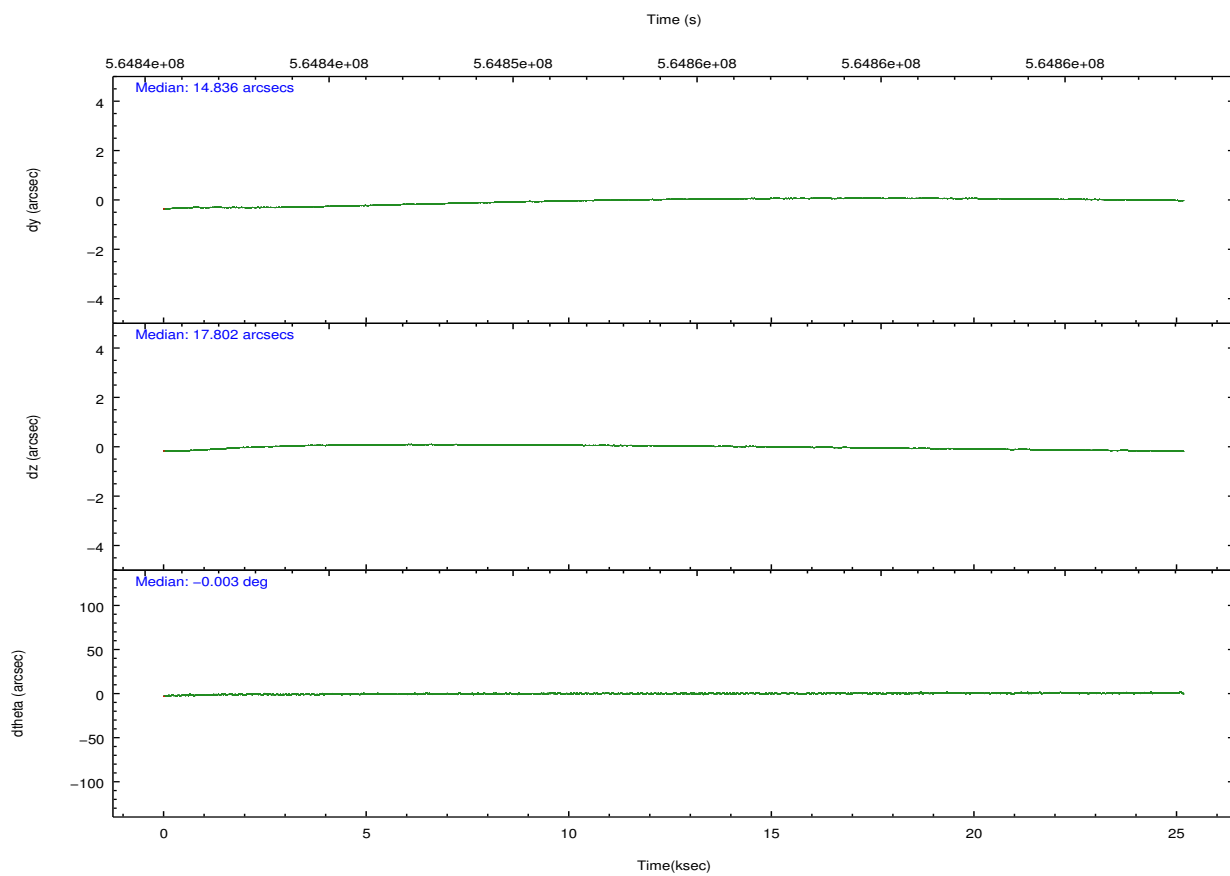
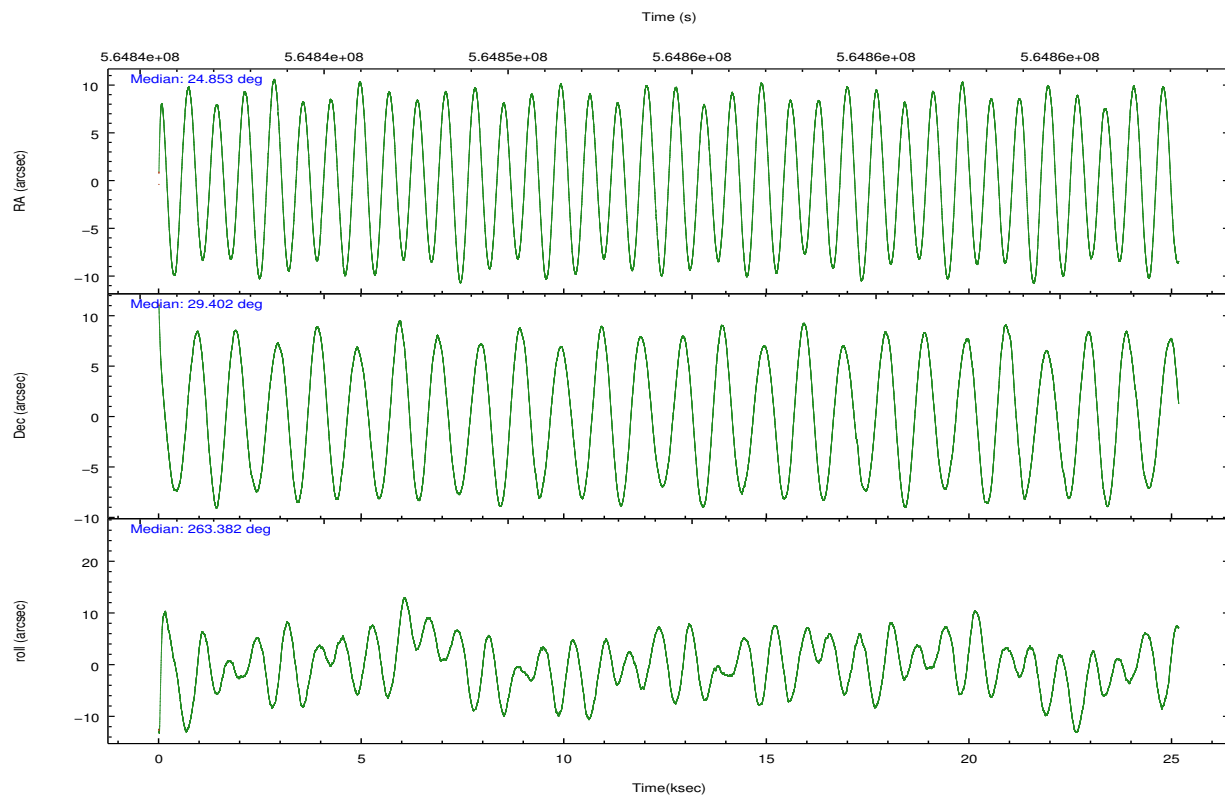
	<b>ccd 7</b>
grade 0 events	1800
	6%
grade 1 events	33
	0%
grade 2 events	2943
	10%
grade 3 events	1813
	6%
grade 4 events	1776
	6%
grade 5 events	2512
	9%
grade 6 events	6289
	22%
grade 7 events	10679
	38%

## 2.2 Compared Parameters

Parameter	Planned	Actual	Parameter	Planned	Actual
Instrument	ACIS	ACIS	Obspar format version number	7	7
Detector	ACIS-7	ACIS-7	Obspar file type	PREDICTED	ACTUAL
Grating	NONE	NONE	Obspar update status	NONE	UPDATED
Data mode	FAINT	FAINT	Number of optional ACIS chips dropped	0	0
Observation mode	POINTING	POINTING	On-chip summing requested	N	N
[deg] Pointing RA	24.839610	24.85249359152321	Subarray requested	CUSTOM	1/8
[deg] Pointing Dec	29.426801	29.40176489510216	Subarray start row	449	449
[deg] Pointing Roll	263.238647	263.3889341368406	Subarray row count	128	128
[mm] SIM focus pos	-0.684267	-0.6828225247311905	Alternating exposures requested	N	N
[mm] SIM defocus	0	0.001444936568705701	[s] Primary exposure time	0.000000	0.4
[mm] SIM translation stage pos	-190.132523	-190.1400660498719			
[mm] SIM translation stage offset	0	0.00754346686406393			
[s] Observation start time (MET)	564841969.184000	564840940.23613			
Observation start date	2015-11-25T12:31:41	2015-11-25T12:15:40			
[s] Observation end time (MET)	564866969.184000	564867988.45016			
Observation end date	2015-11-25T19:28:21	2015-11-25T19:46:28			
Read mode	TIMED	TIMED			

## 2.3 Aspect



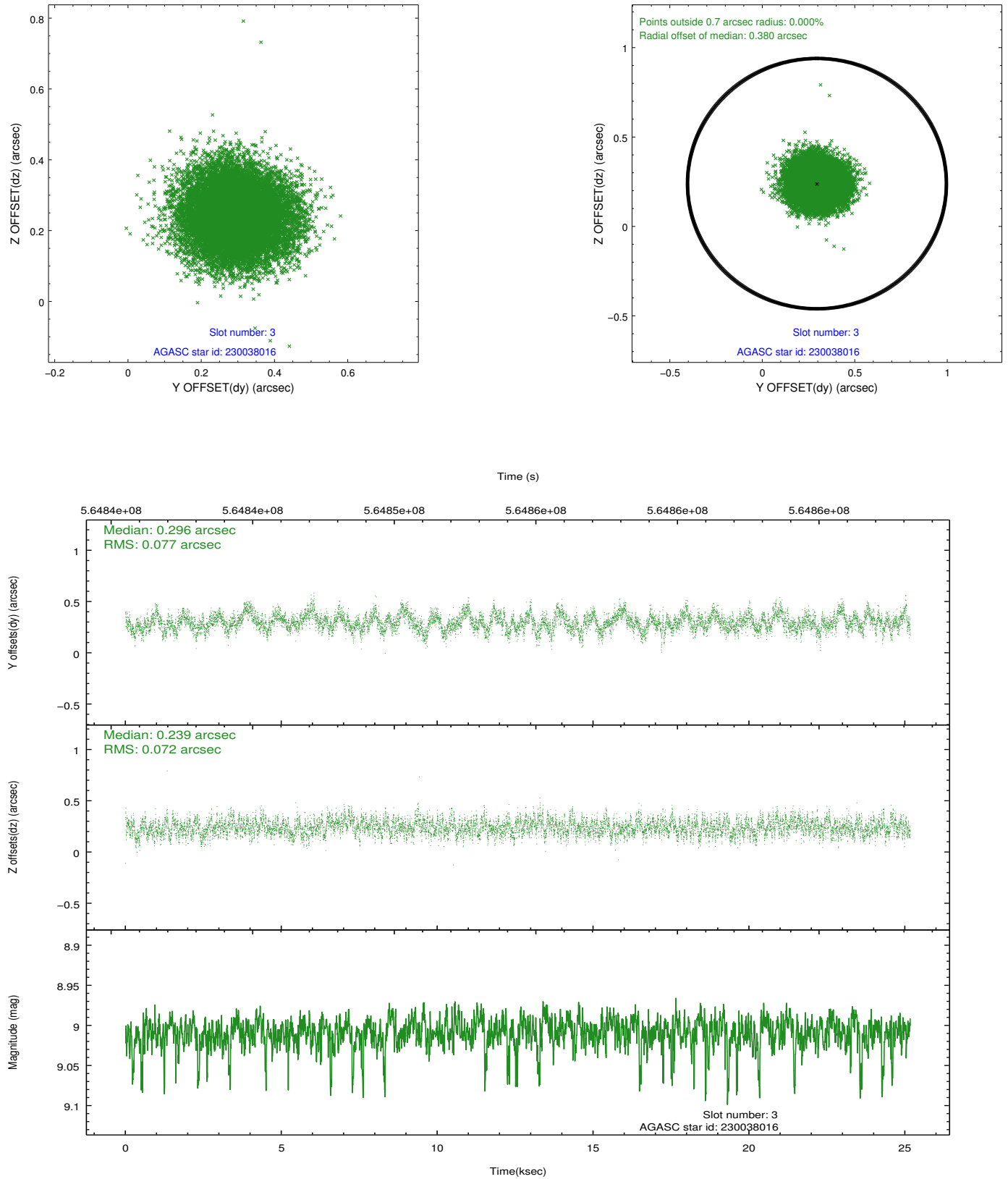


### Slot Statistics

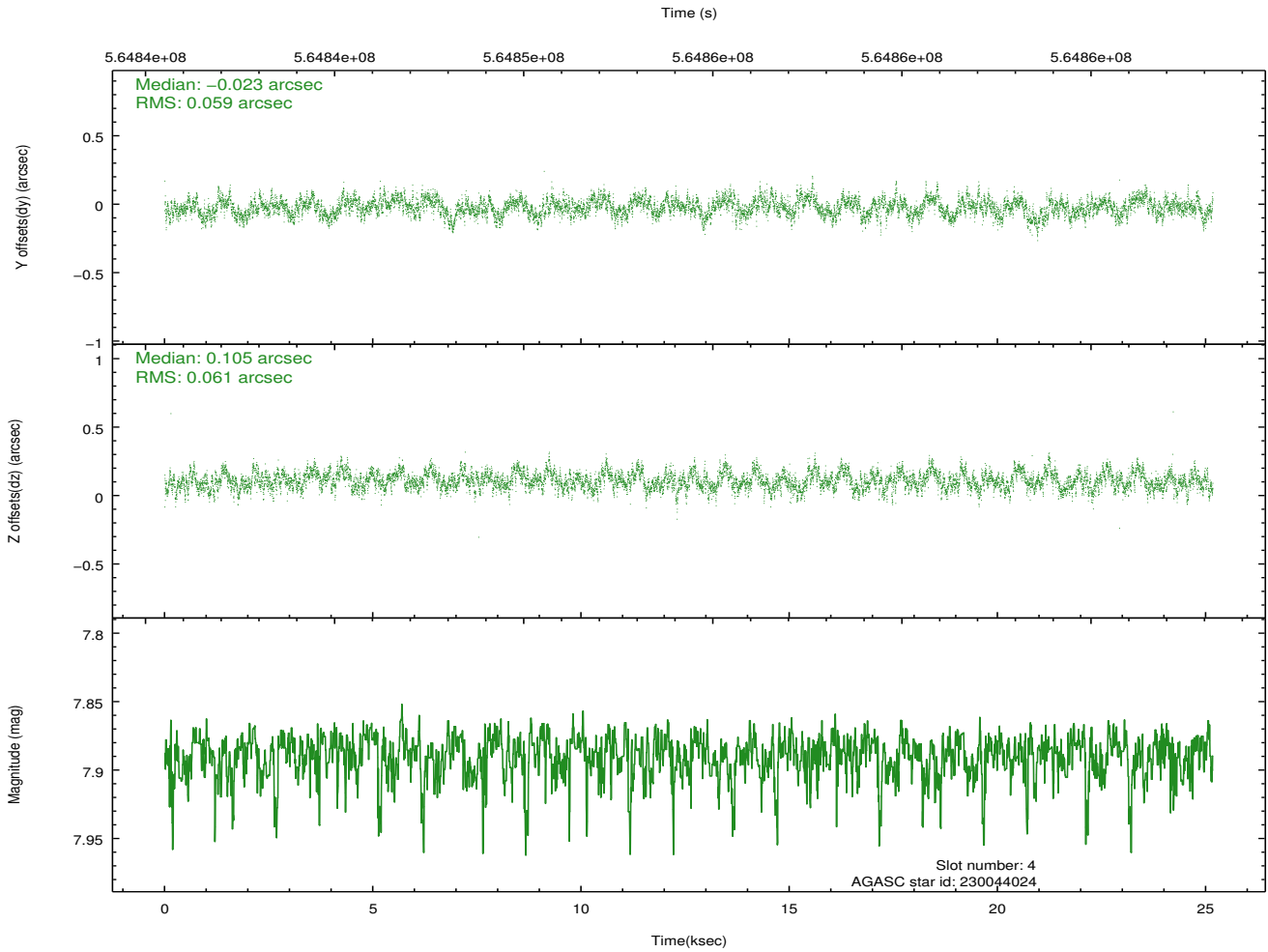
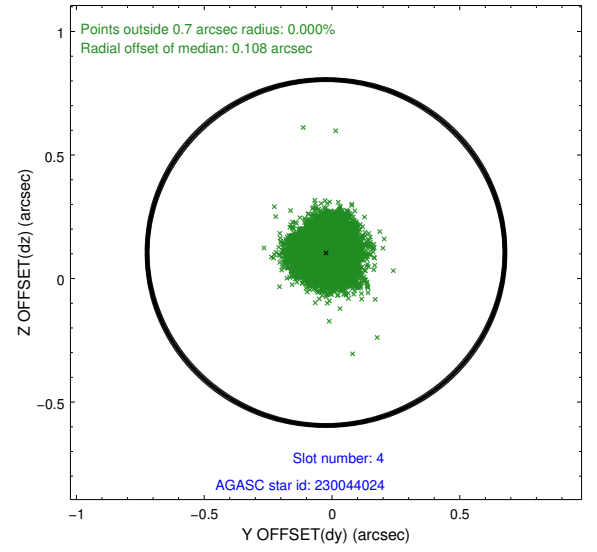
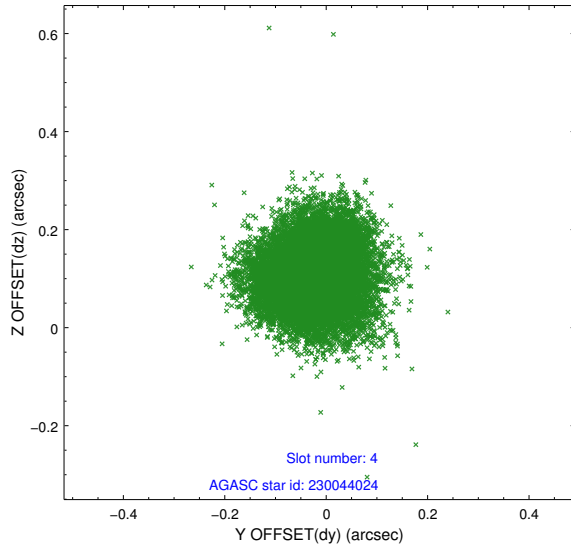
slot	status	used	id	mag	n_pts	med_dy	med_dz	dr1	dr2	ra	dec	mean_y	mean_z
0	FID		ACIS-S-2	7.12	6139	-0.153	-0.128	0.009	0.018	0.000000	0.000000	-767.91	-1739.35
1	FID		ACIS-S-4	7.22	6139	0.406	0.108	0.009	0.017	0.000000	0.000000	2145.89	169.20
2	FID		ACIS-S-5	7.24	6138	-0.285	0.029	0.007	0.013	0.000000	0.000000	-1820.71	162.98
3	GUIDE	used	230038016	9.01	12271	0.296	0.239	0.113	0.178	24.512063	29.995514	-1913.48	-1255.38
4	GUIDE	used	230044024	7.89	12276	-0.023	0.105	0.092	0.143	24.160420	29.433927	220.54	-2117.78
5	GUIDE	used	230050040	8.13	12275	-0.020	0.029	0.074	0.122	24.616896	28.845501	2160.84	-451.07
6	GUIDE	used	230950392	9.02	12270	-0.183	-0.112	0.136	0.204	25.307791	29.134959	867.64	1585.66
7	GUIDE	used	230951328	8.78	12272	-0.070	-0.265	0.124	0.195	25.468047	29.066442	1050.36	2115.84

## 2.4 Star Slots

### 2.4.1 Slot 3

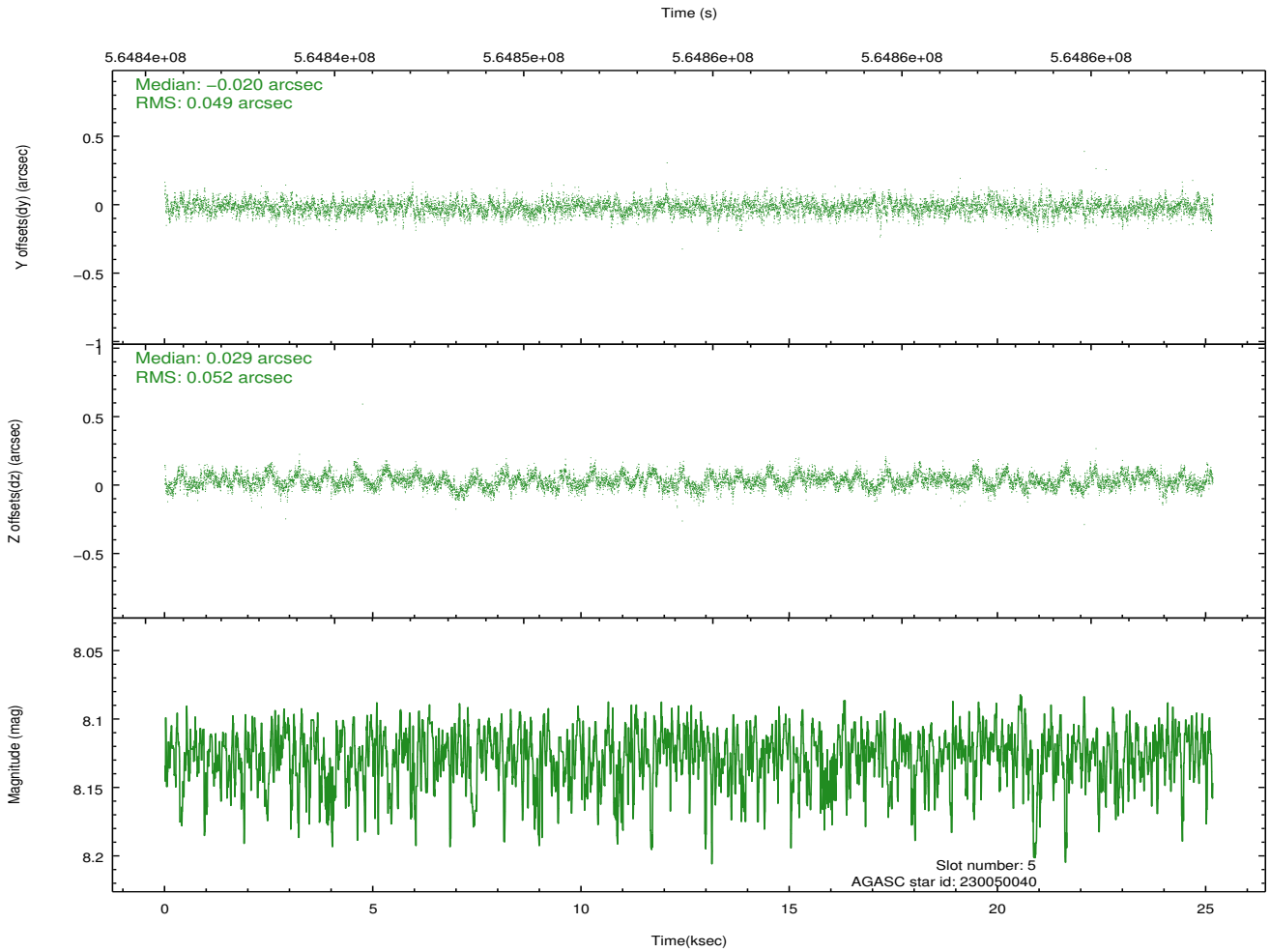
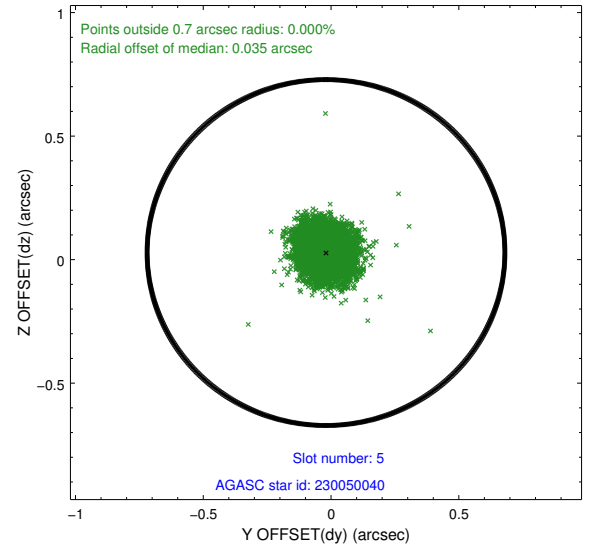
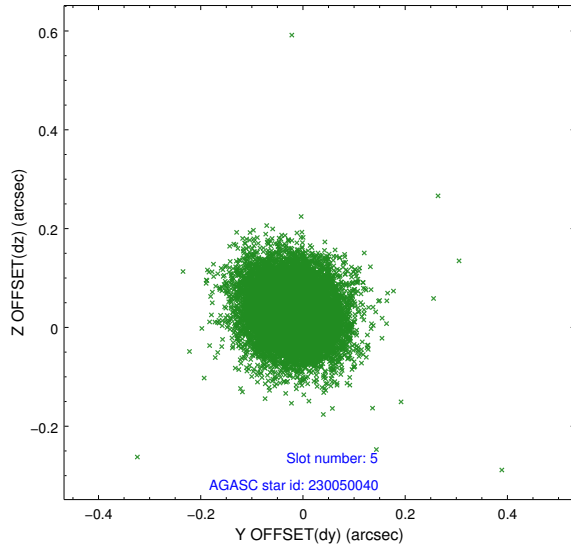


## 2.4.2 Slot 4

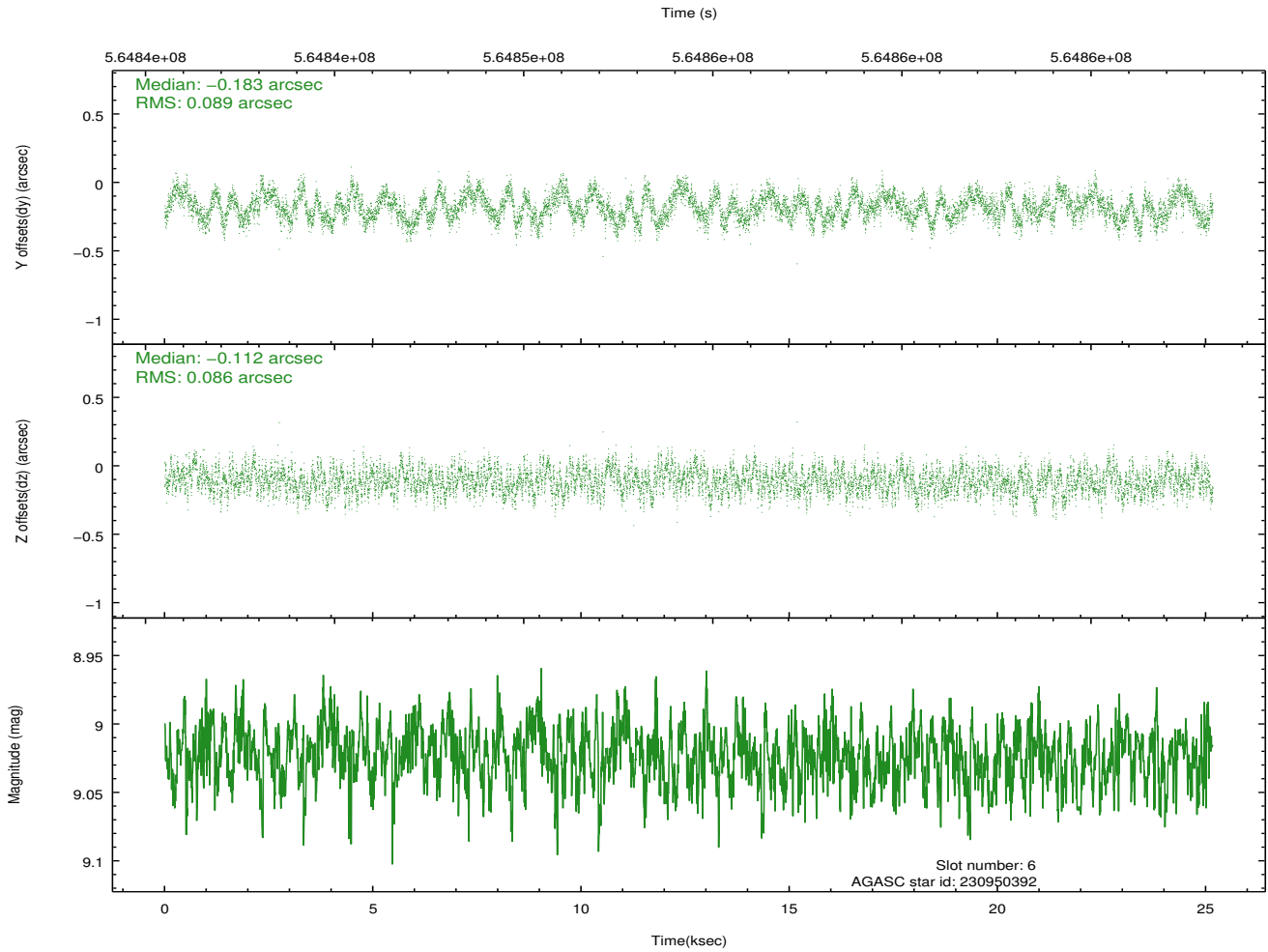
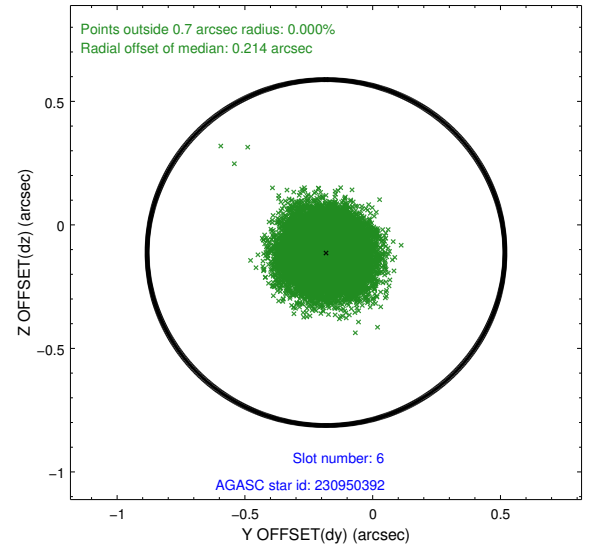
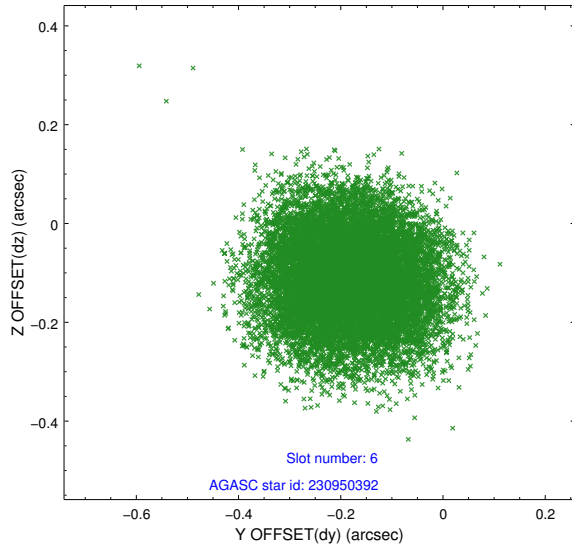




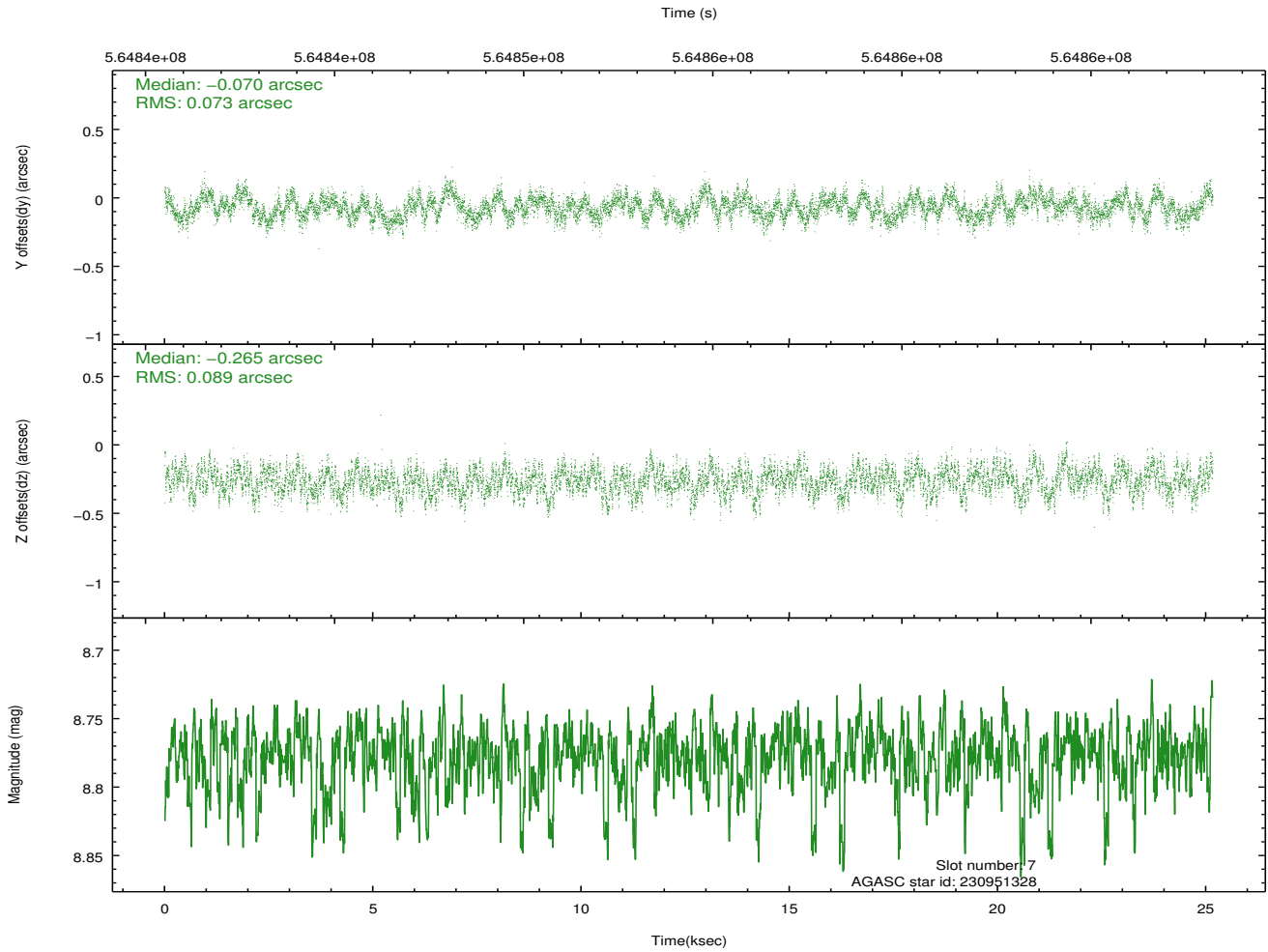
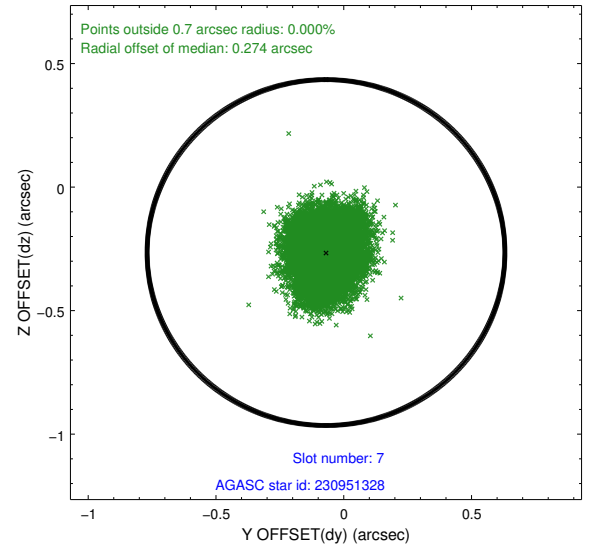
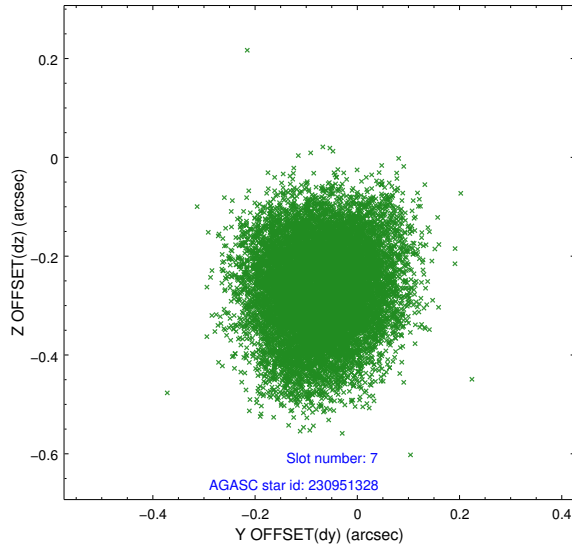
### 2.4.3 Slot 5



## 2.4.4 Slot 6

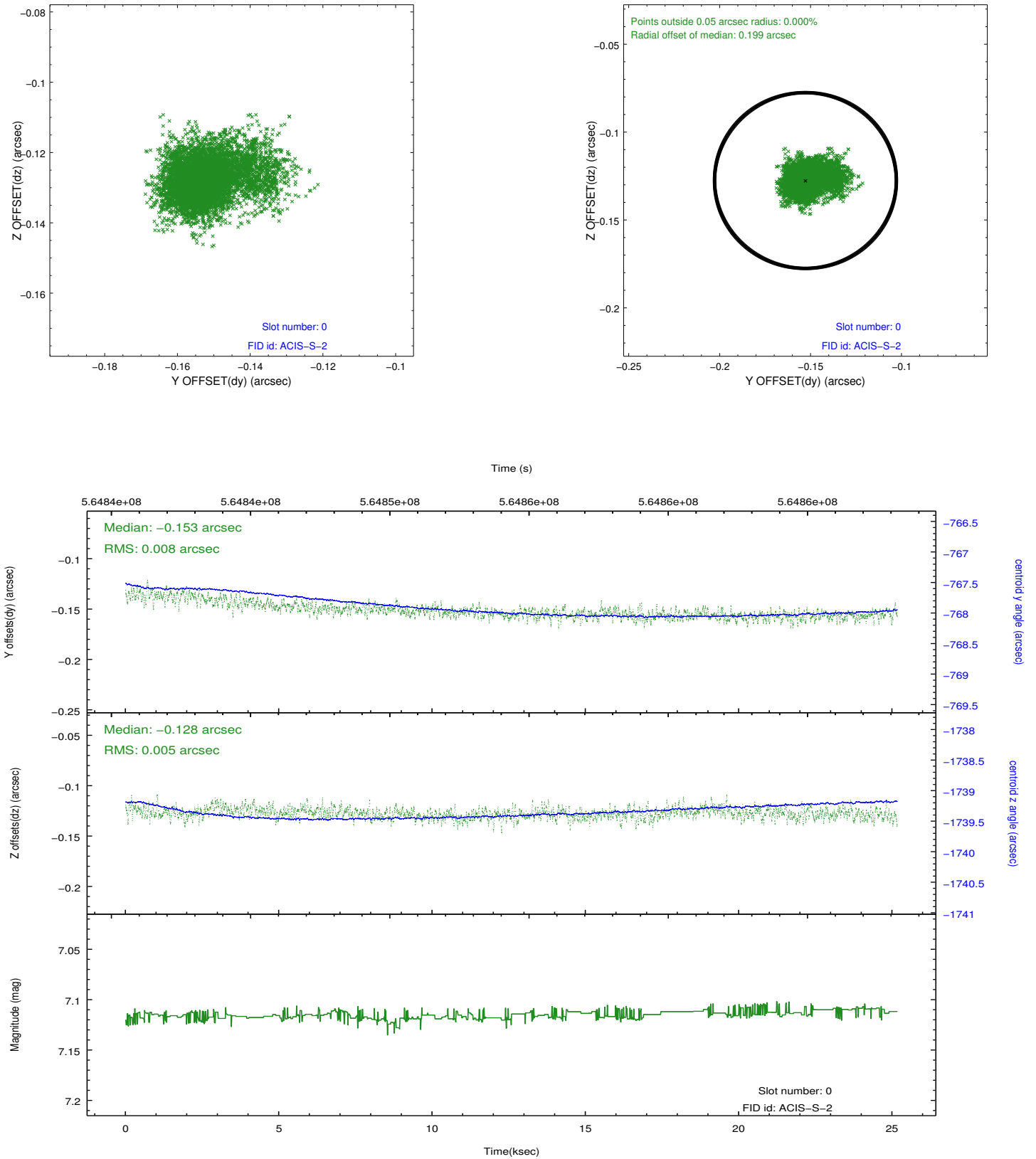


## 2.4.5 Slot 7

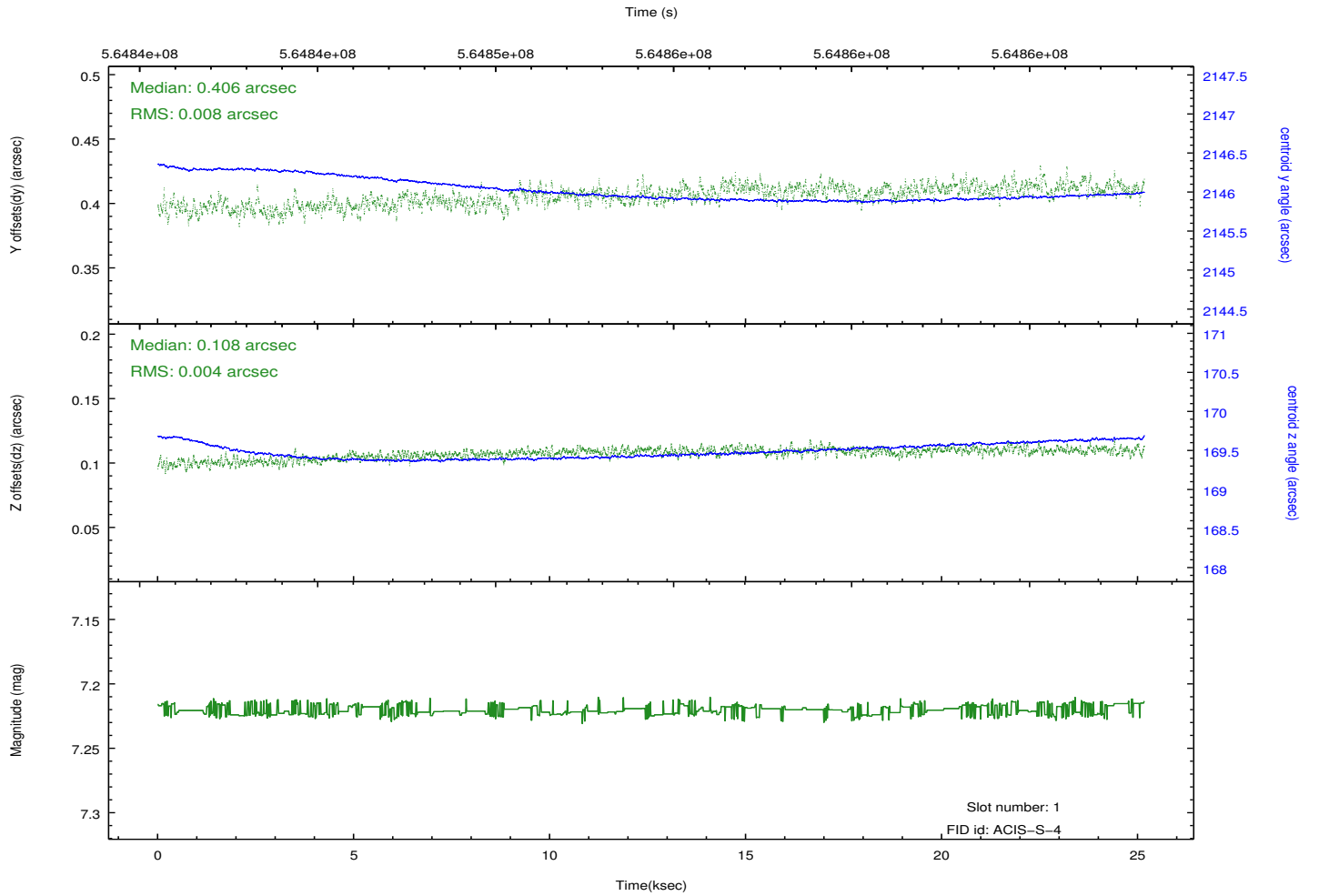
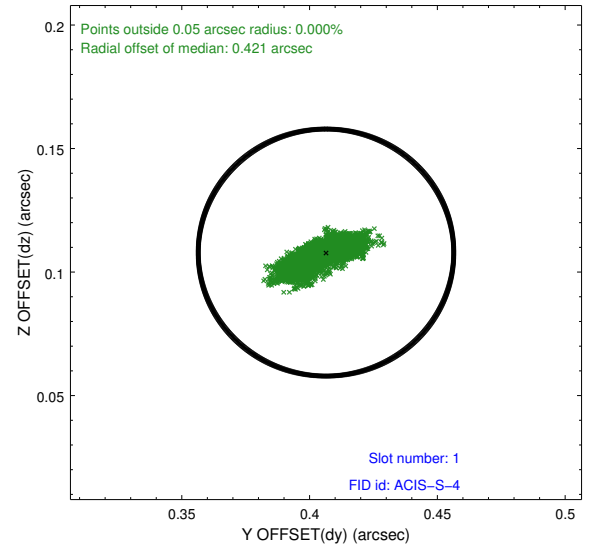
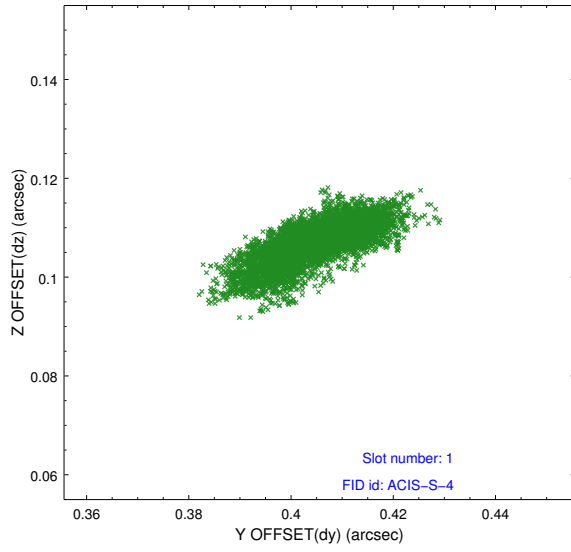


## 2.5 FID Slots

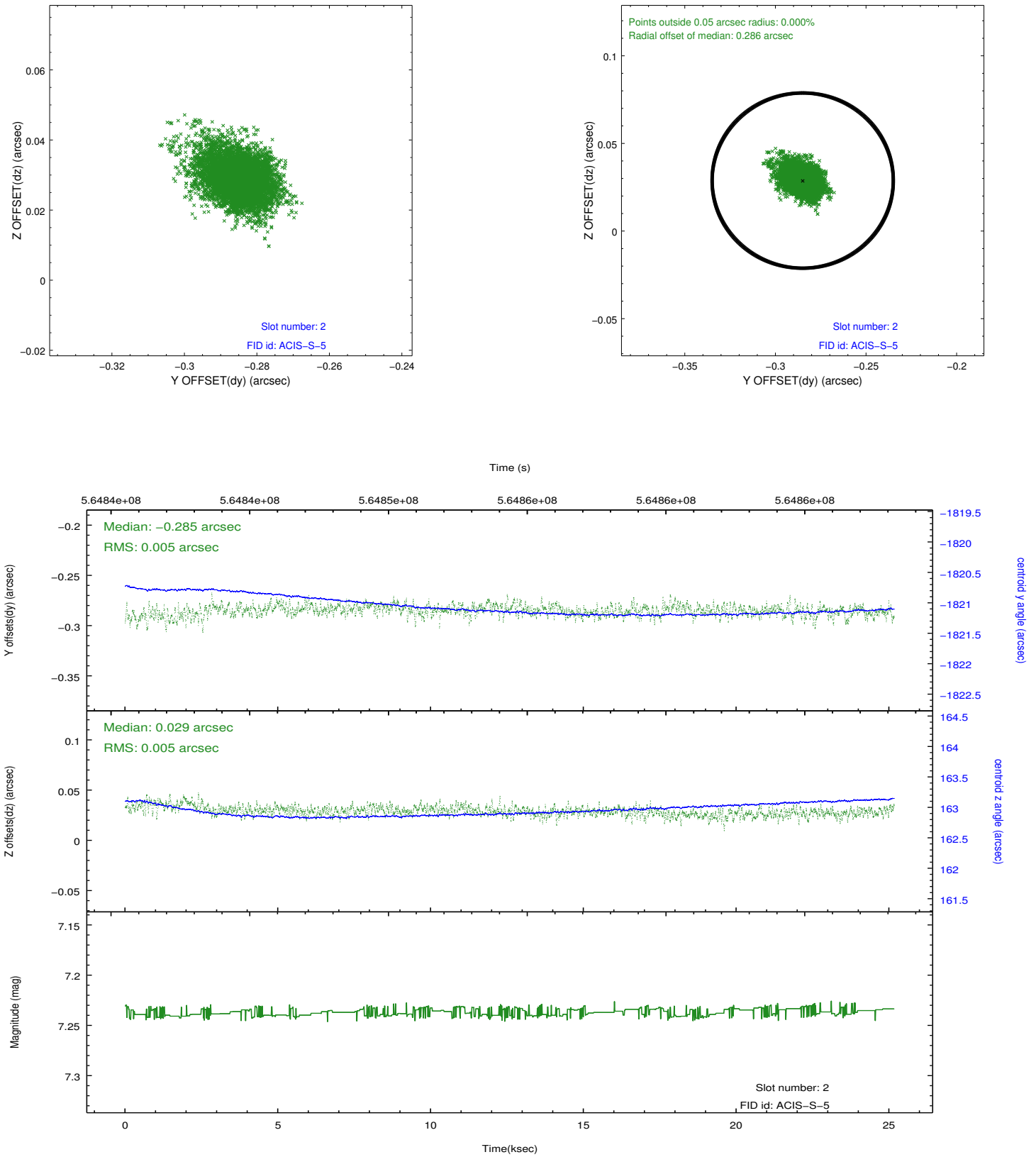
### 2.5.1 Slot 0



## 2.5.2 Slot 1



### 2.5.3 Slot 2



## A Summary

### A.1 Status

V&V Scientist	Joy Nichols
V&V Date (YYYY-MM-DD)	2015.11.30
V&V Edition	1
V&V Disposition and Status	OK
V&V Charge Time	25.069196854711

### A.2 Comments