

V&V Reference Report

L2 ASCDS Version : 10.4.3.1

Observation 18098 - L2 Version 1
Chandra X-Ray Center

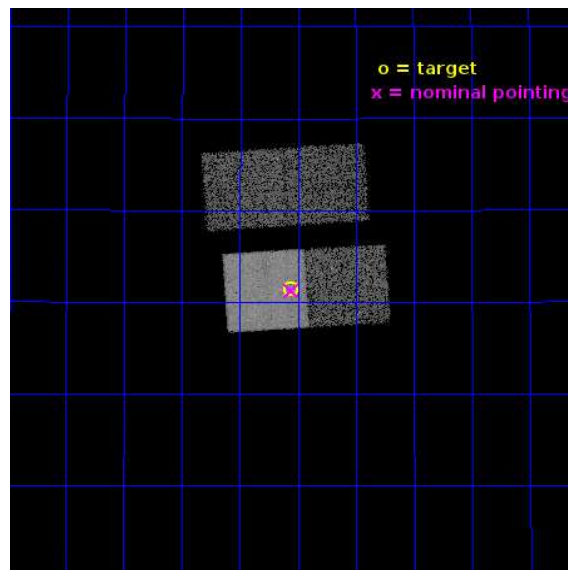
L2 Processing Date : Feb 8 2016

Contents

1	Front	2
2	OBI	3
2.1	OBI	3
2.1.1	Images	3
2.1.2	Bias	3
2.1.3	Parameters	4
2.1.4	Events	4
2.2	Compared Parameters	5
2.3	Aspect	6
2.4	Star Slots	9
2.4.1	Slot 3	9
2.4.2	Slot 4	10
2.4.3	Slot 5	11
2.4.4	Slot 6	12
2.4.5	Slot 7	13
2.5	FID Slots	14
2.5.1	Slot 0	14
2.5.2	Slot 1	15
2.5.3	Slot 2	16
A	Summary	17
A.1	Status	17
A.2	Comments	17

1 Front

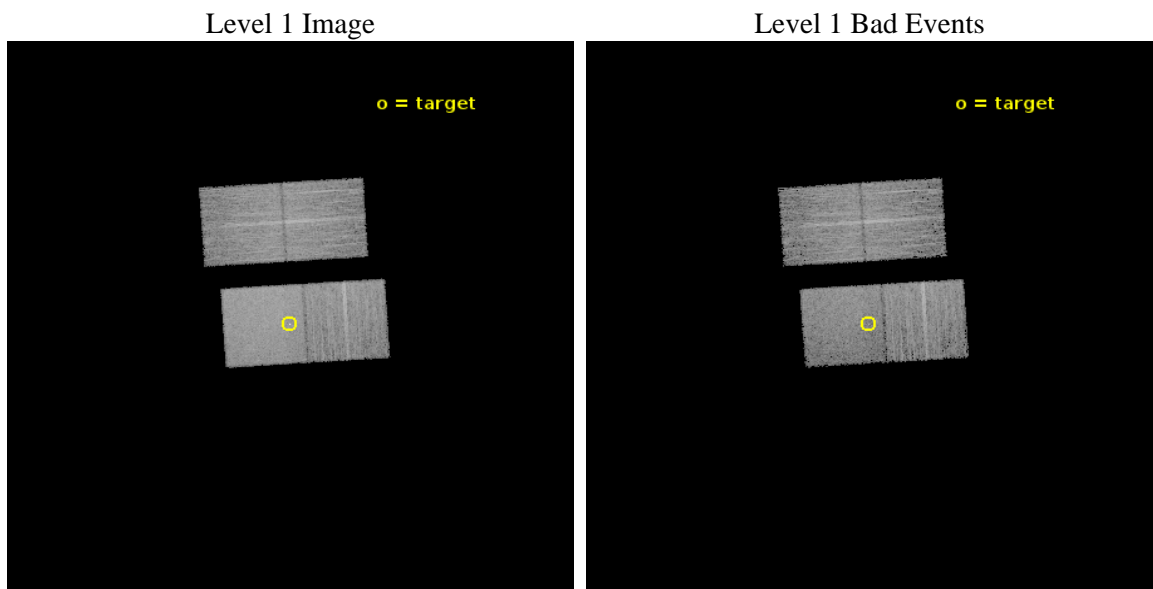
seq_num	703164	Sequence number
obs_id	18098	Observation id
title	Extending the Extragalactic 3CR Chandra Survey to z=1.5	Proposal t
observer	Francesco Massaro	Principal investigator
object	3CR 220.2	Source name
dtcycle	0	
cycle	P	events from which exps? Prim/Second/Both
ra_targ	142.639167	Observer's specified target RA [deg]
dec_targ	36.023194	Observer's specified target Dec [deg]
ra_nom	142.63880259056	Nominal RA [deg]
dec_nom	36.020822196964	Nominal Dec [deg]
roll_nom	176.29606842032	Nominal Roll [deg]
revision	1	Processing version of data
ontime	12074.500092983	Sum of GTIs [s]
livetime	11916.737860151	Livetime [s]
ontime2	12074.500092983	Sum of GTIs [s]
ontime3	12074.500092983	Sum of GTIs [s]
ontime6	12074.500092983	Sum of GTIs [s]
ontime7	12074.500092983	Sum of GTIs [s]
l2events	60826	Number of level 2 events



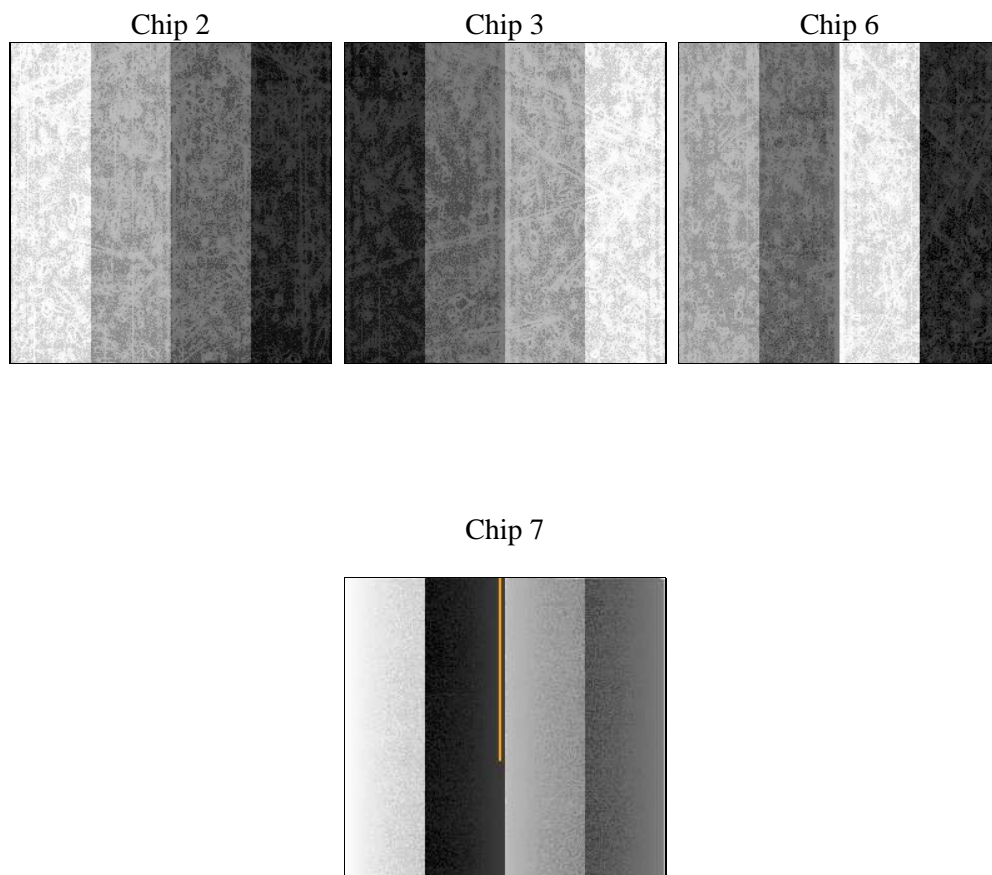
2 OBI

2.1 OBI

2.1.1 Images



2.1.2 Bias



2.1.3 Parameters

obi_num	0	Obi number	sched_exp_time	12000.000000	[s] Scheduled observation exposure time
ascdsver	10.4.3.1	Processing system revision	ontime	12074.500092983	Sum of GTIs [s]
caldsver	4.7.0	 	ontime2	12074.500092983	Sum of GTIs [s]
date	2016-02-08T22:35:44	Date and time of file creation	ontime3	12074.500092983	Sum of GTIs [s]
revision	1	Processing version of data	ontime6	12074.500092983	Sum of GTIs [s]
			ontime7	12074.500092983	Sum of GTIs [s]
			l1events	300498	Number of level 1 events

2.1.4 Events

	ccd 2	ccd 3	ccd 6	ccd 7
level 1 events	68524	67995	70292	93687
rejected events	60861	60387	61929	52220
rejected %	88%	88%	88%	55%

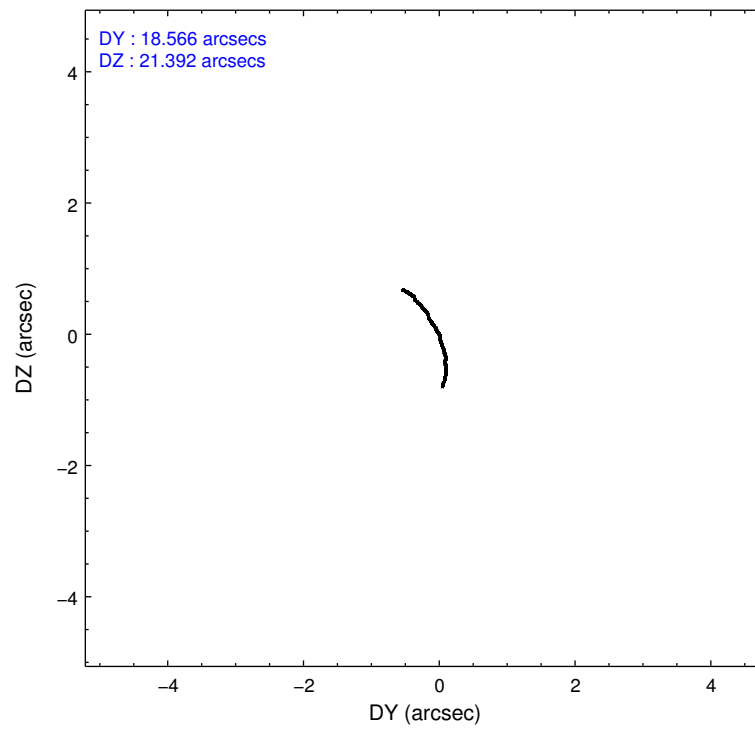
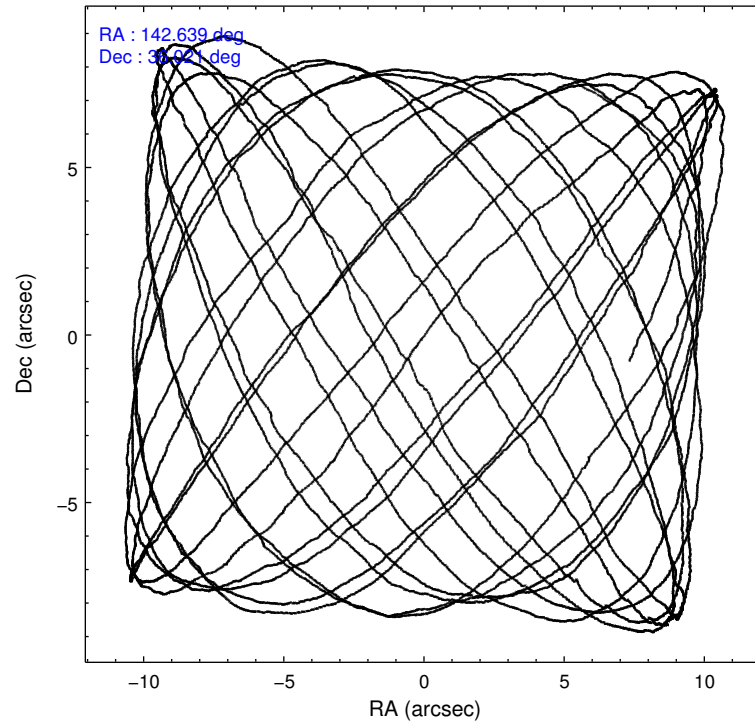
	ccd 2	ccd 3	ccd 6	ccd 7
grade 0 events	2673	2638	2735	3717
	3%	3%	3%	3%
grade 1 events	35	27	32	117
	0%	0%	0%	0%
grade 2 events	1976	1654	1934	8588
	2%	2%	2%	9%
grade 3 events	737	846	837	3356
	1%	1%	1%	3%
grade 4 events	808	803	833	3284
	1%	1%	1%	3%
grade 5 events	2801	3568	3409	9388
	4%	5%	4%	10%
grade 6 events	1473	1669	2029	22535
	2%	2%	2%	24%
grade 7 events	58021	56790	58483	42702
	84%	83%	83%	45%

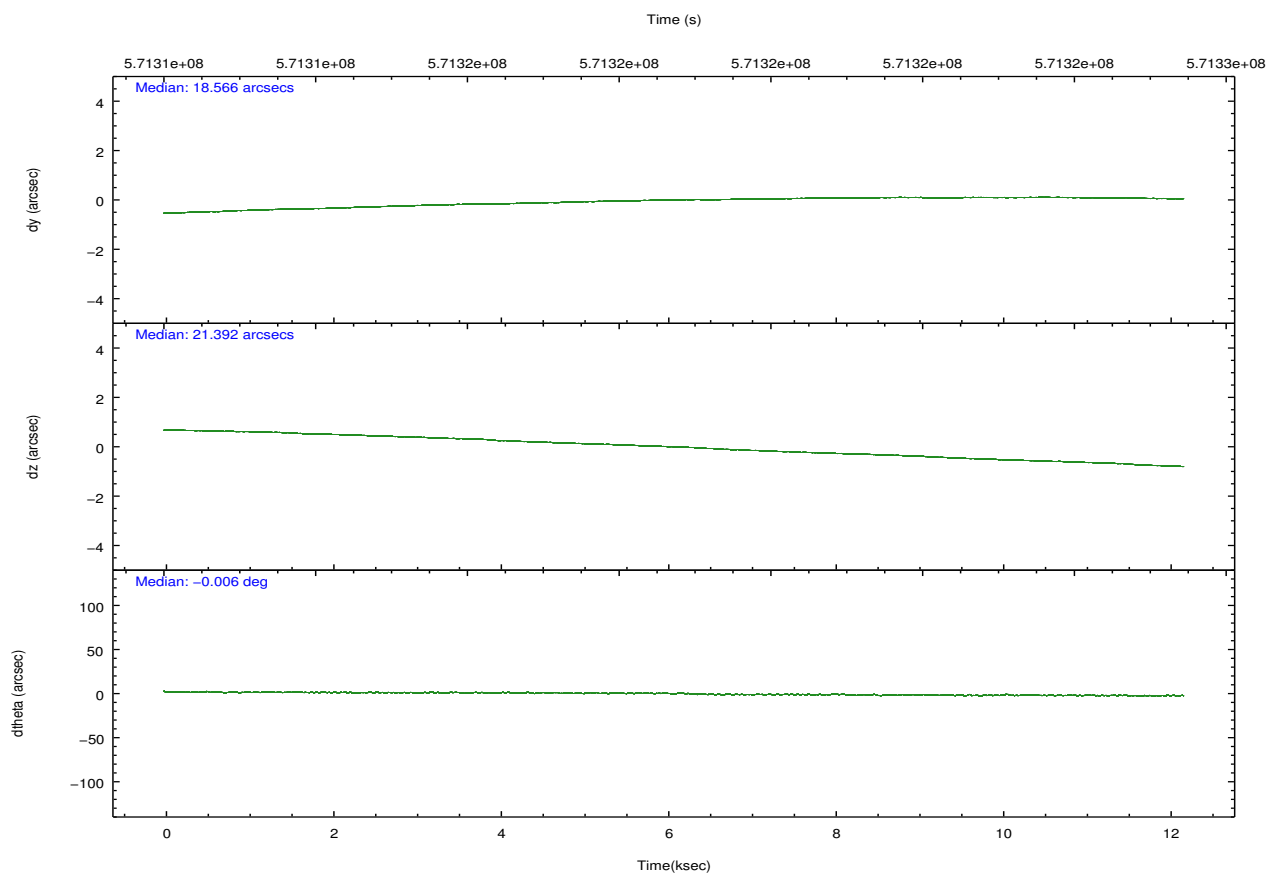
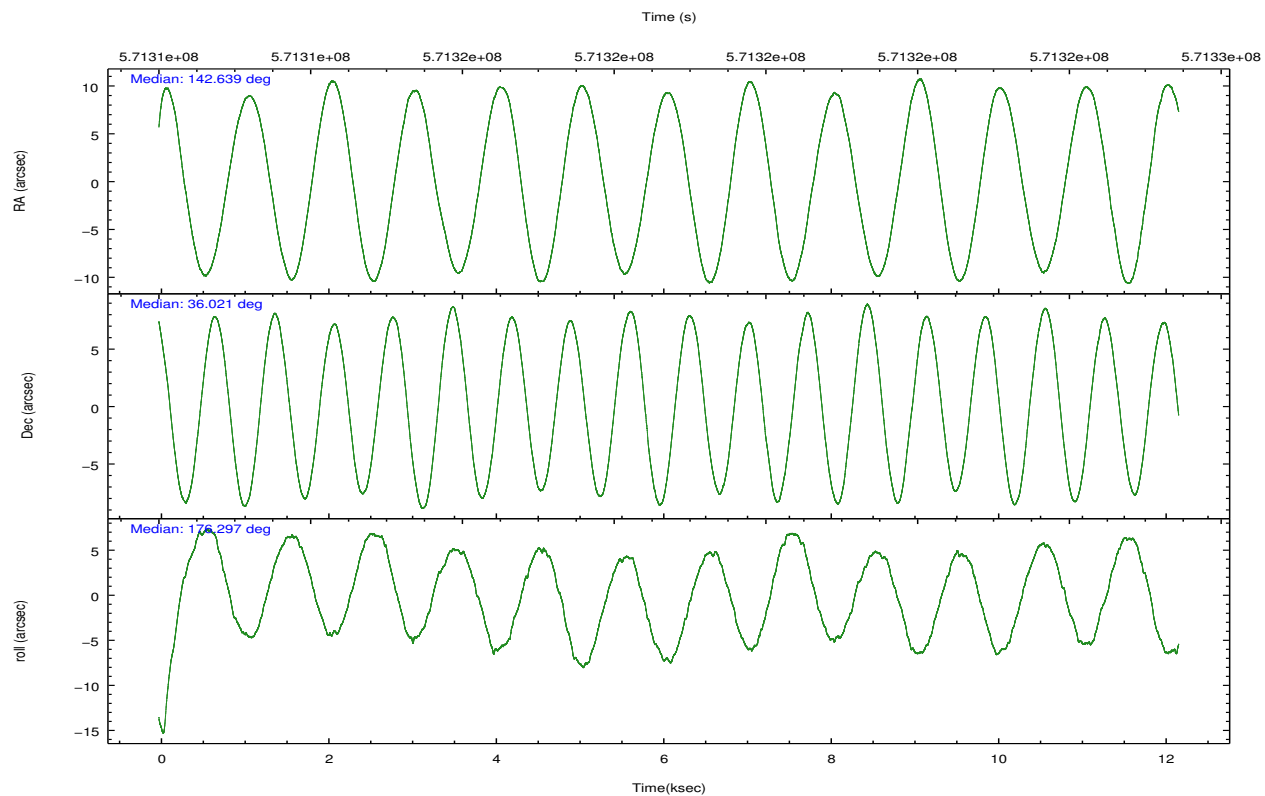
2.2 Compared Parameters

Parameter	Planned	Actual
Instrument	ACIS	ACIS
Detector	ACIS-2367	ACIS-2367
Grating	NONE	NONE
Data mode	VFAINT	VFAINT
Observation mode	POINTING	POINTING
[deg] Pointing RA	142.668987	142.6388025905564
[deg] Pointing Dec	36.033297	36.02082219696399
[deg] Pointing Roll	176.121684	176.2960684203206
[mm] SIM focus pos	-0.684267	-0.6828225247311905
[mm] SIM defocus	0	0.001444936568705701
[mm] SIM translation stage pos	-190.132523	-190.1425803651734
[mm] SIM translation stage offset	0	0.01005778216563158
[s] Observation start time (MET)	571312791.184000	571311601.0908099
Observation start date	2016-02-08T09:58:43	2016-02-08T09:40:01
[s] Observation end time (MET)	571324791.184000	571325289.96659
Observation end date	2016-02-08T13:18:43	2016-02-08T13:28:09
Read mode	TIMED	TIMED

Parameter	Planned	Actual
Obspar format version number	7	7
Obspar file type	PREDICTED	ACTUAL
Obspar update status	NONE	UPDATED
CCD I0 on	N	N
CCD I1 on	N	N
CCD I2 on	O1	Y
CCD I3 on	O2	Y
CCD S0 on	N	N
CCD S1 on	N	N
CCD S2 on	Y	Y
CCD S3 on	Y	Y
CCD S4 on	N	N
CCD S5 on	N	N
Number of optional ACIS chips dropped	0	0
On-chip summing requested	N	N
Subarray requested	NONE	NONE
Alternating exposures requested	N	N
[s] Primary exposure time	0.000000	3.1

2.3 Aspect



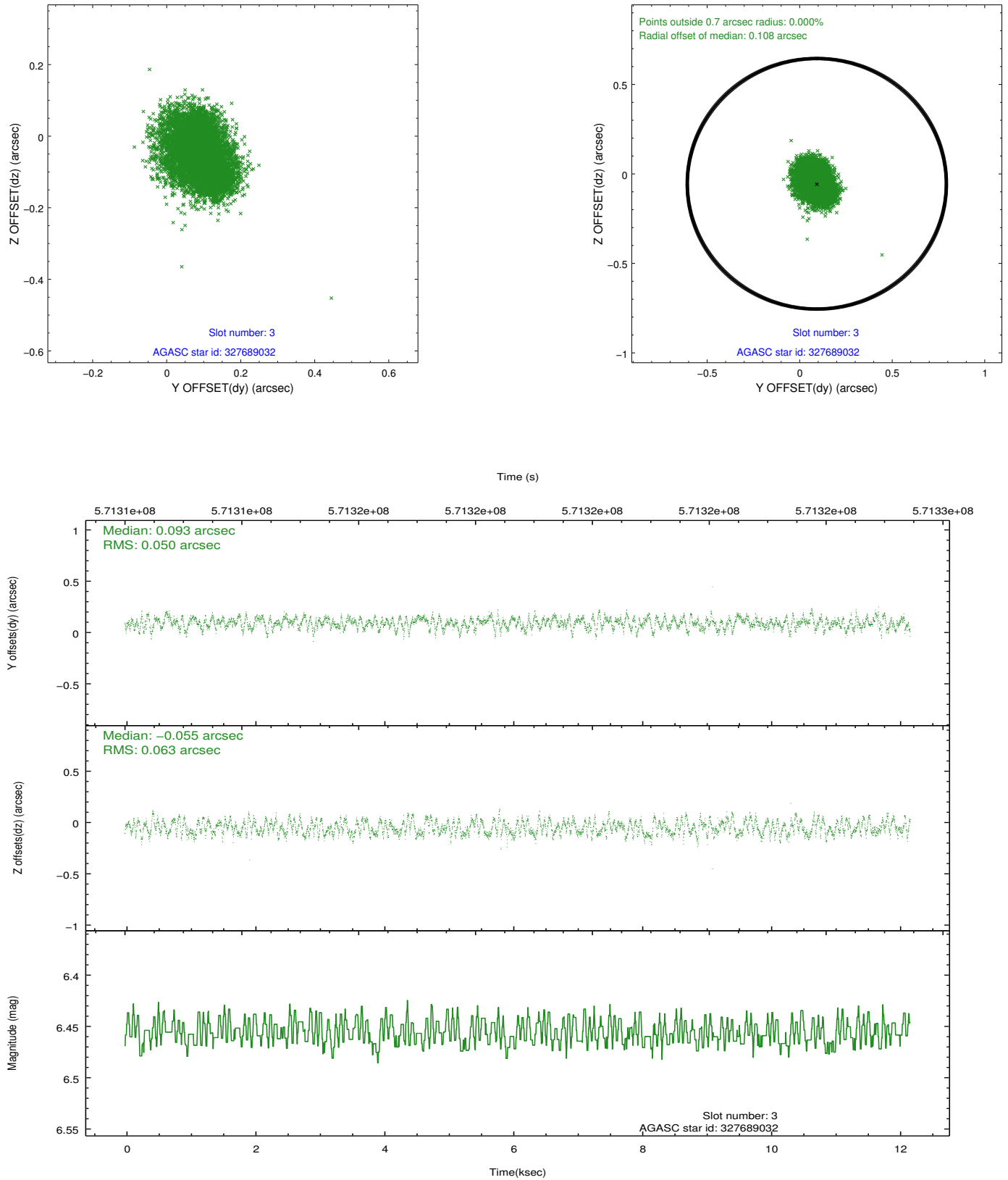


Slot Statistics

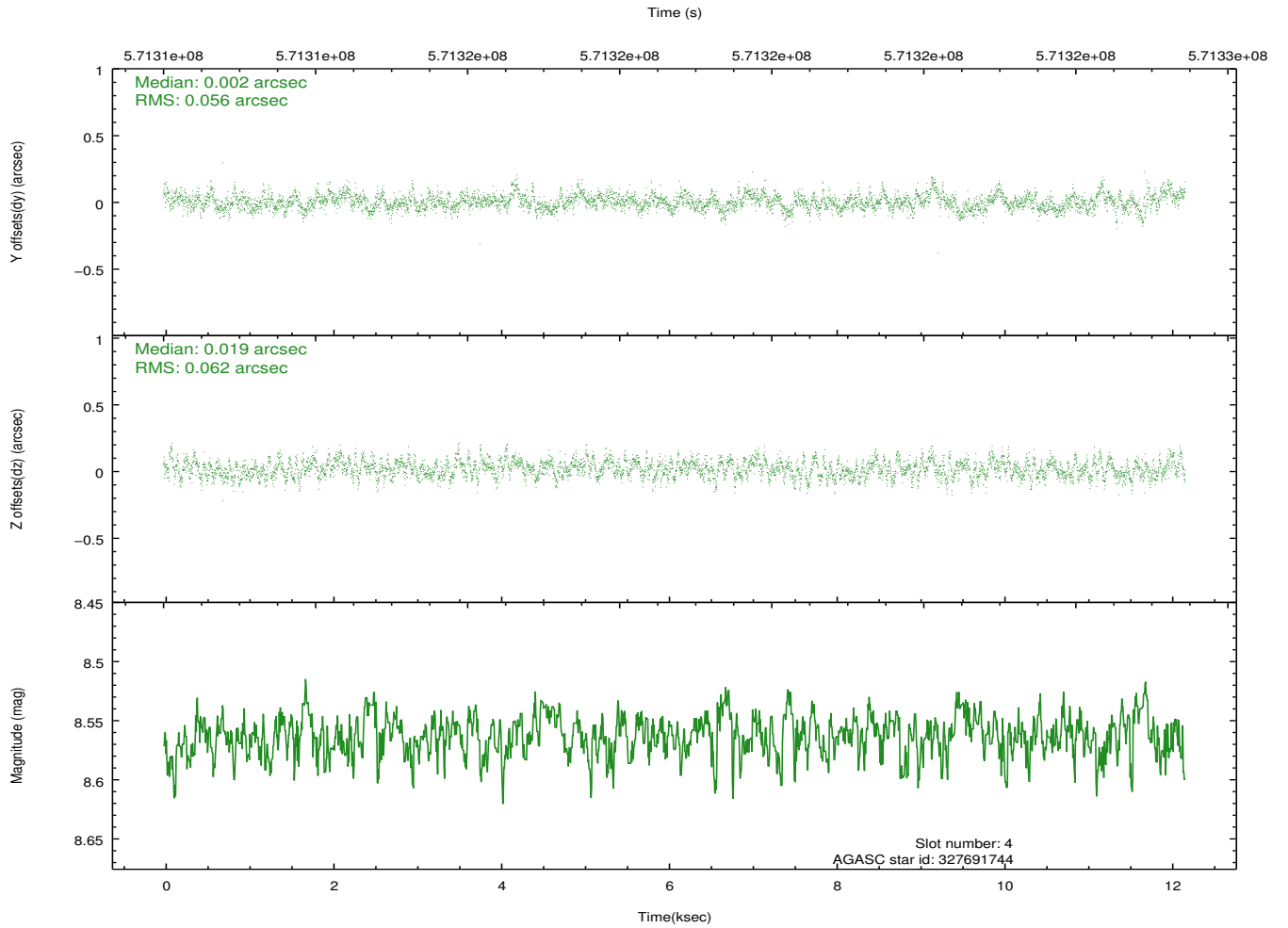
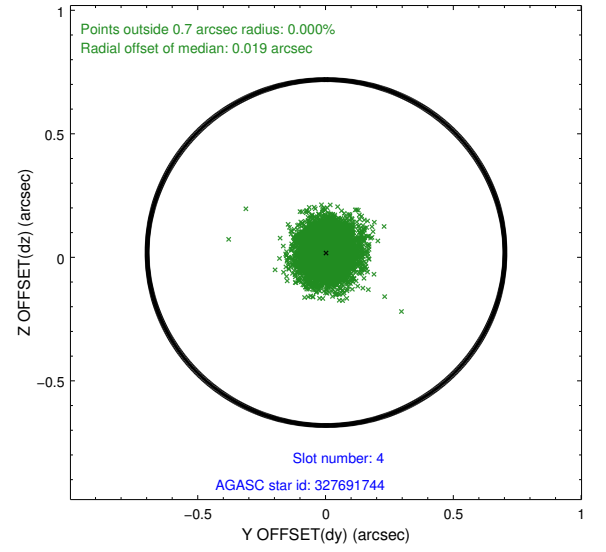
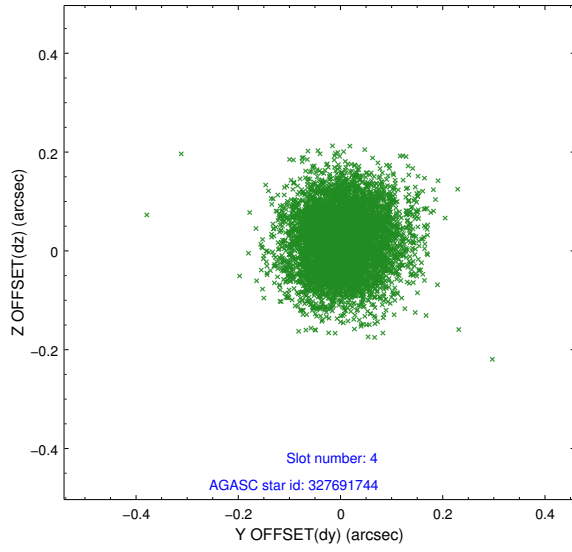
slot	status	used	id	mag	n_pts	med_dy	med_dz	dr1	dr2	ra	dec	mean_y	mean_z
0	FID		ACIS-S-1	7.21	2971	0.068	-0.097	0.020	0.036	0.000000	0.000000	924.57	-1738.59
1	FID		ACIS-S-4	7.21	2971	0.316	0.042	0.020	0.043	0.000000	0.000000	2142.43	165.29
2	FID		ACIS-S-5	7.23	2971	-0.408	0.068	0.009	0.017	0.000000	0.000000	-1824.27	159.33
3	GUIDE	used	327689032	6.46	5942	0.093	-0.055	0.086	0.132	142.926654	36.429095	-647.07	-1472.65
4	GUIDE	used	327691744	8.56	5942	0.002	0.019	0.089	0.143	142.715850	36.197987	-95.04	-600.59
5	GUIDE	used	327691864	6.05	5943	-0.338	-0.144	0.057	0.095	142.140775	36.160722	1563.16	-358.06
6	GUIDE	used	327681976	8.11	5941	0.162	0.145	0.084	0.137	143.311340	36.646801	-1700.32	-2331.00
7	GUIDE	used	327691984	7.95	5938	0.082	0.035	0.080	0.124	143.505053	36.422117	-2320.49	-1570.63

2.4 Star Slots

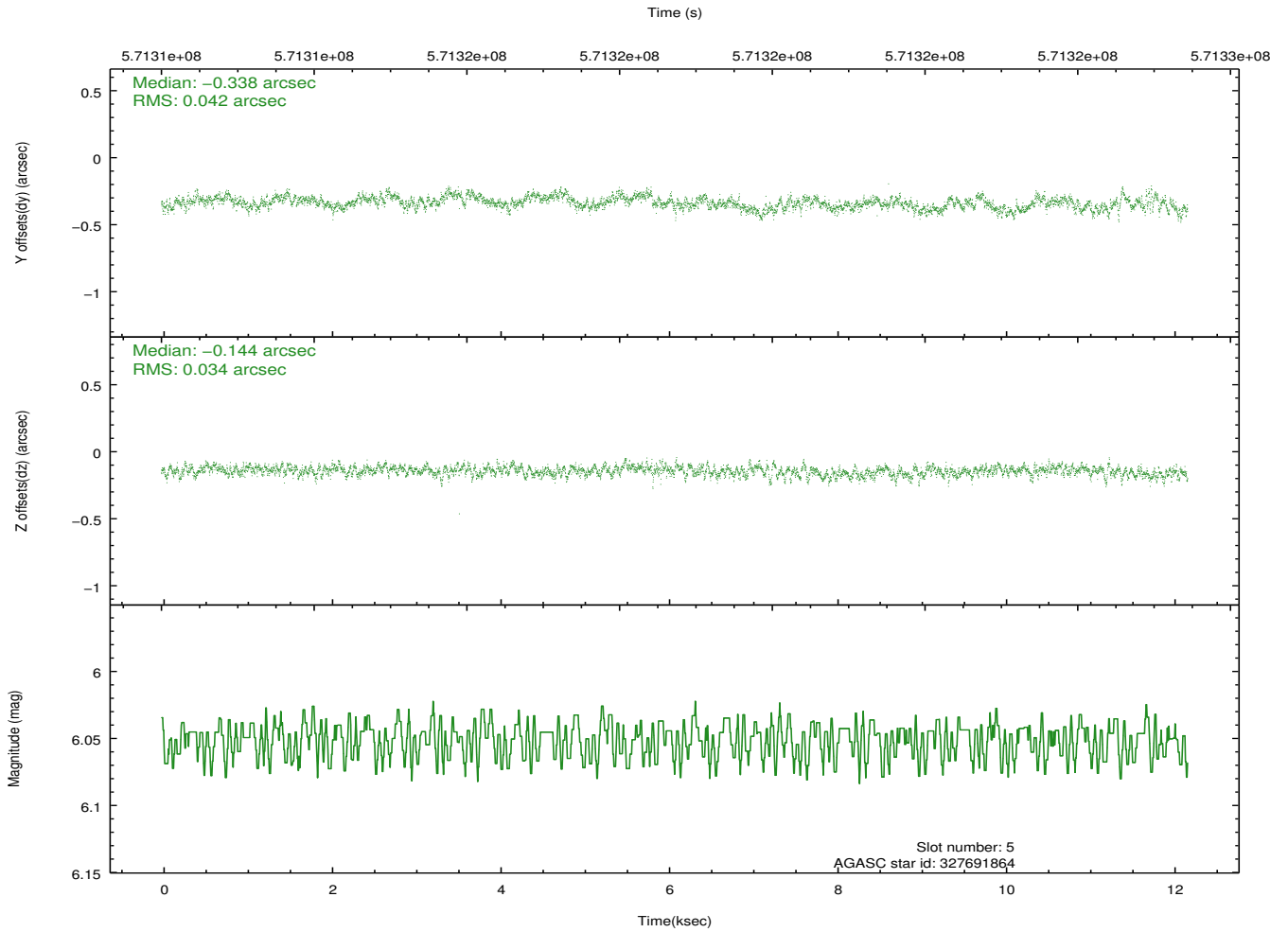
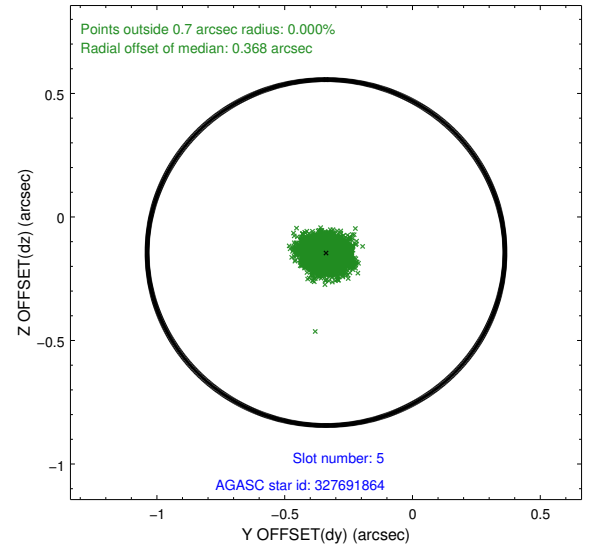
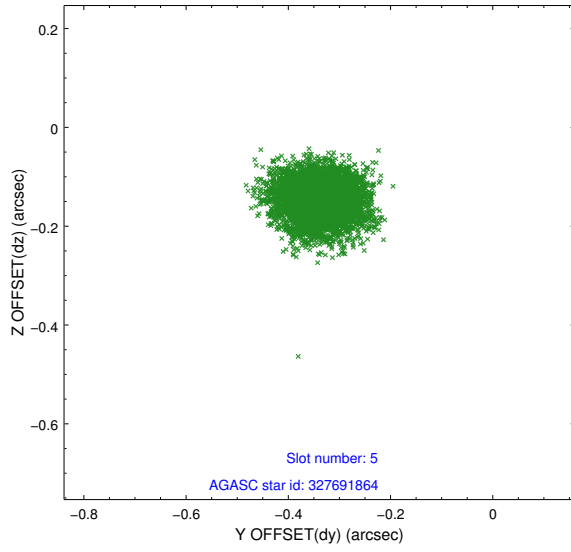
2.4.1 Slot 3



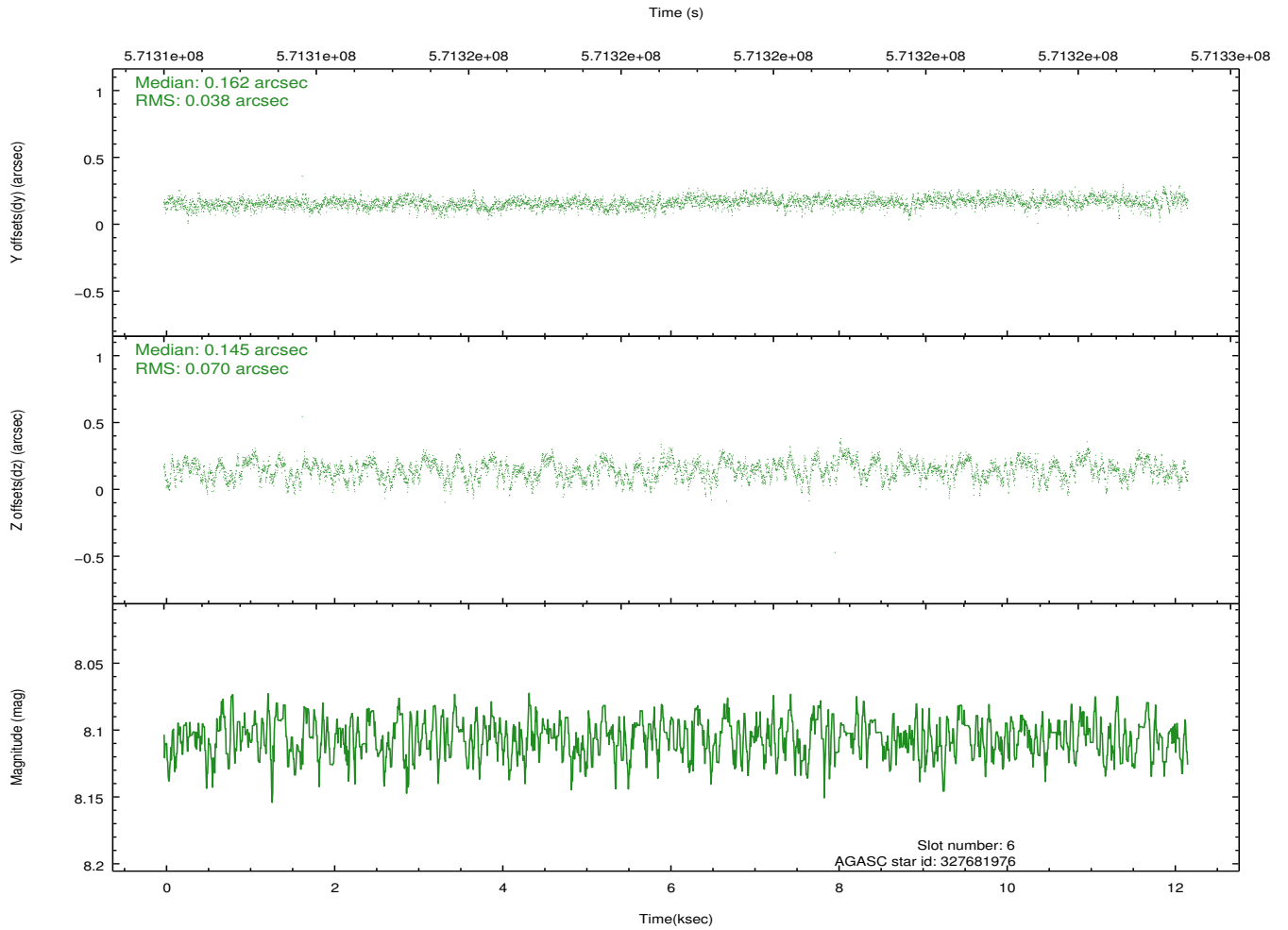
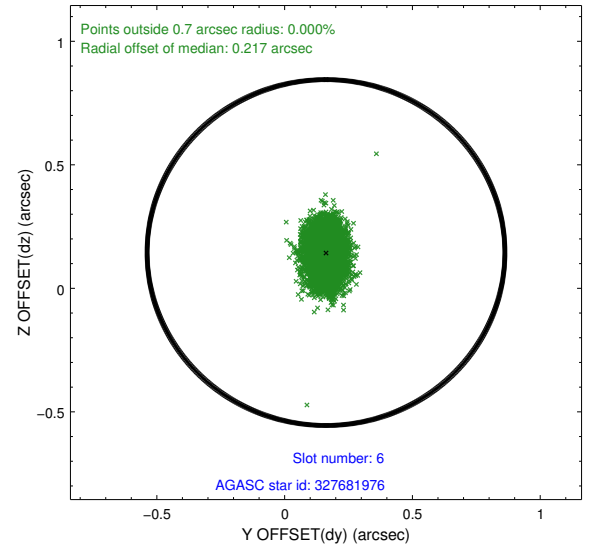
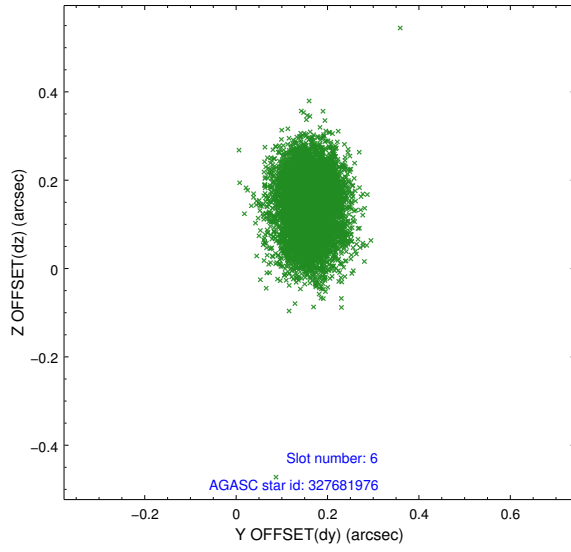
2.4.2 Slot 4



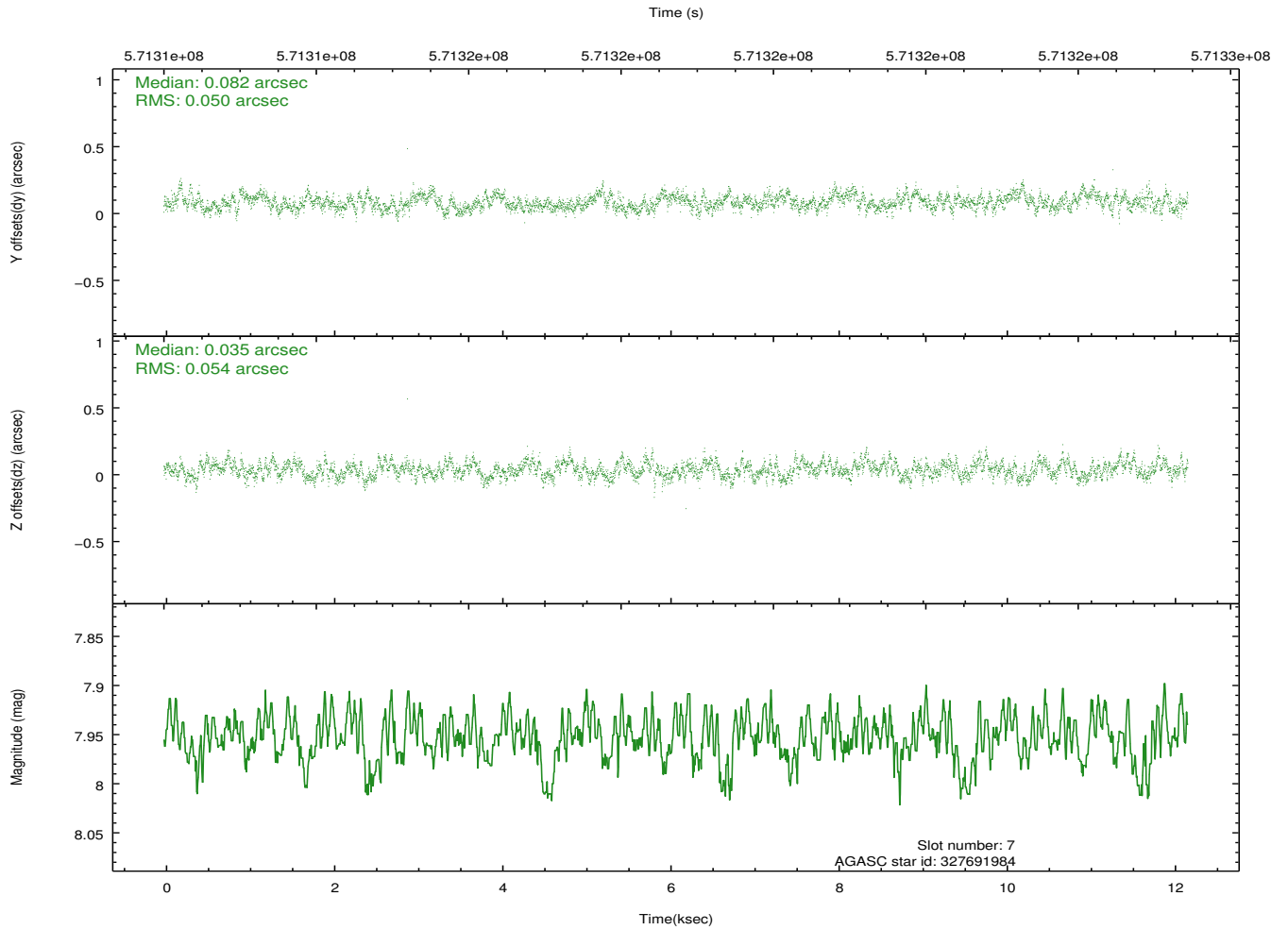
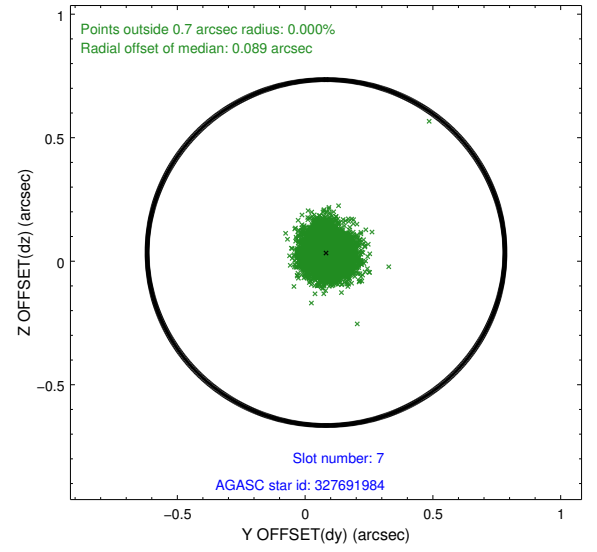
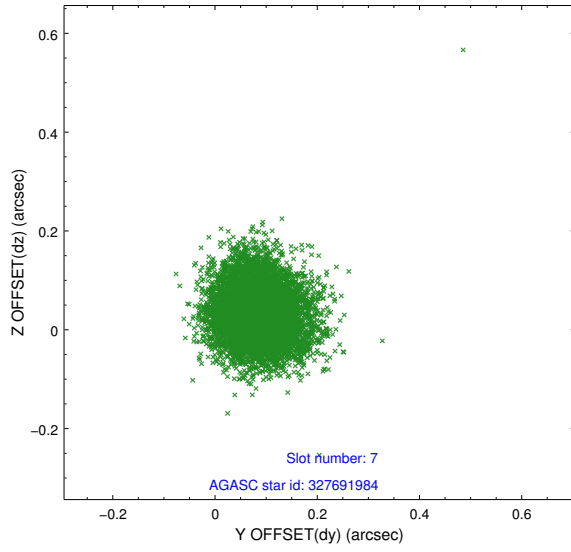
2.4.3 Slot 5



2.4.4 Slot 6

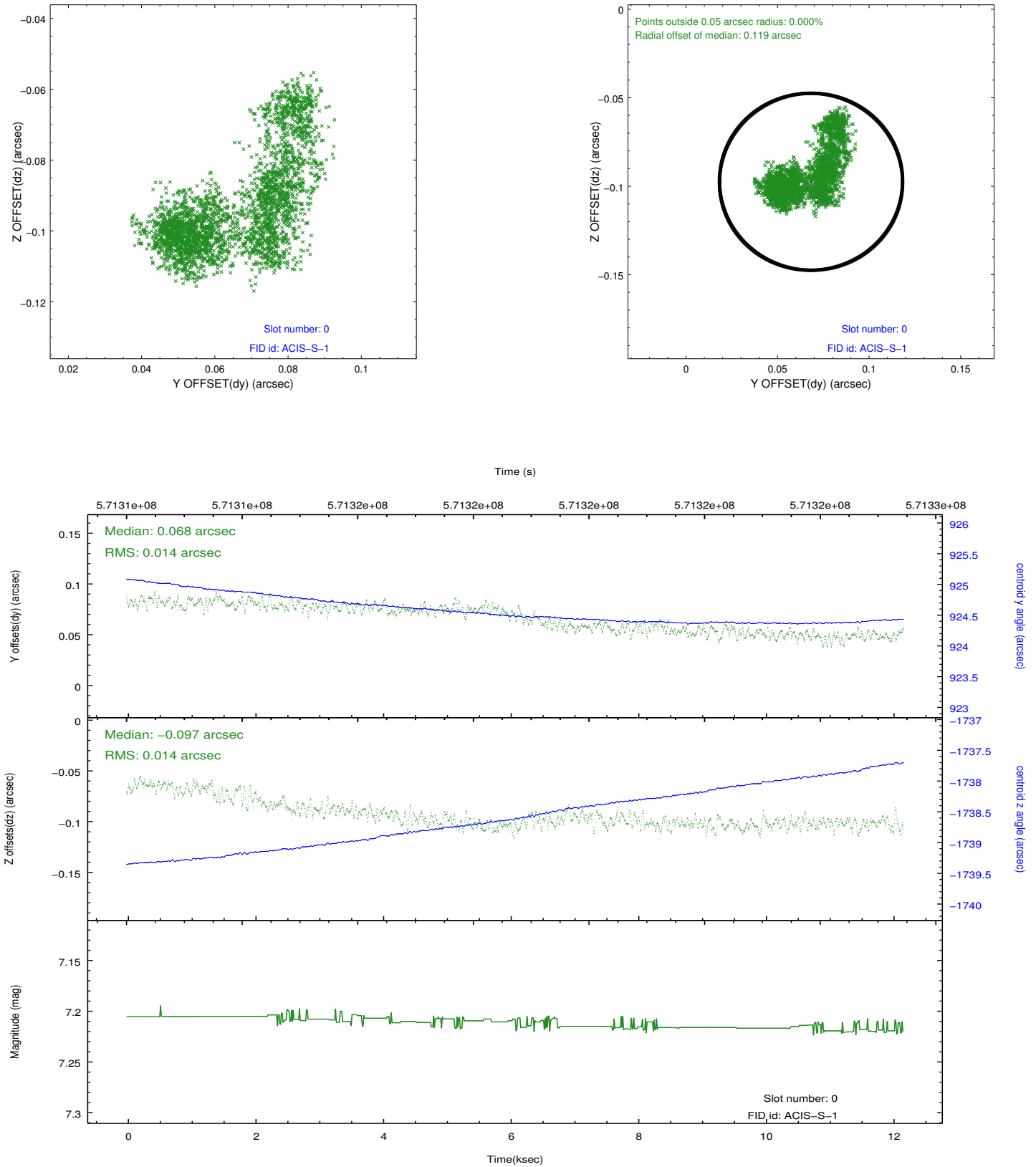


2.4.5 Slot 7

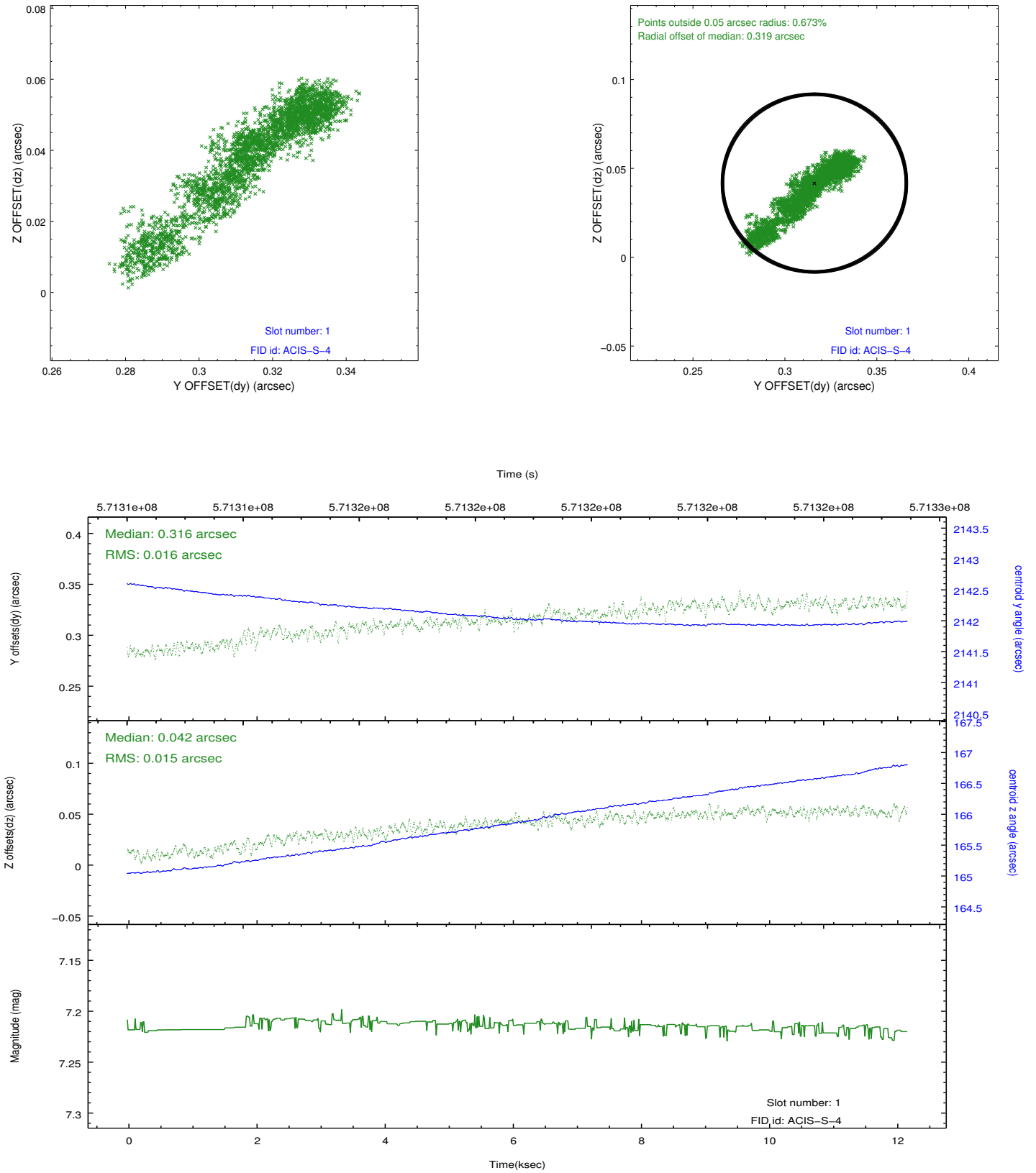


2.5 FID Slots

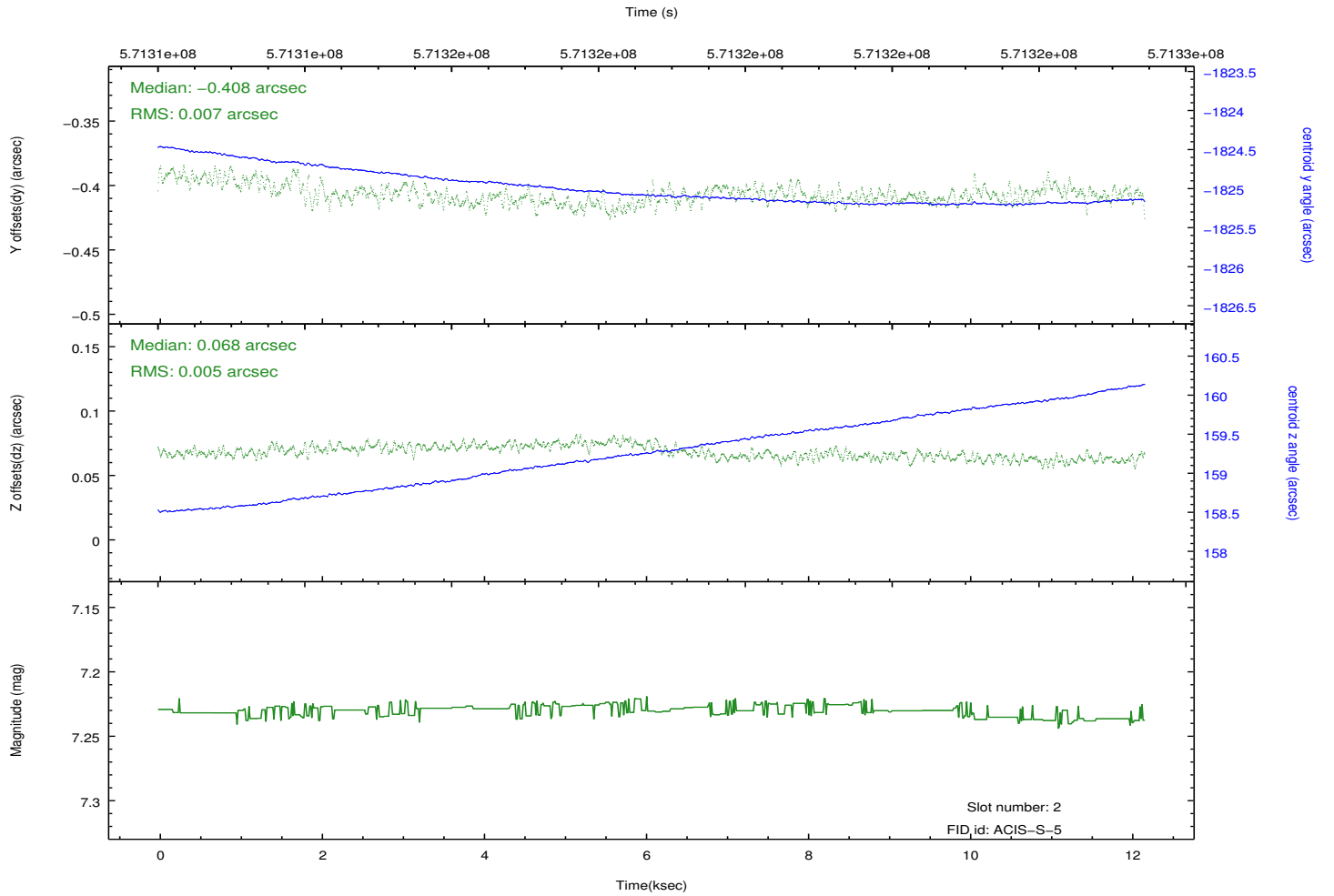
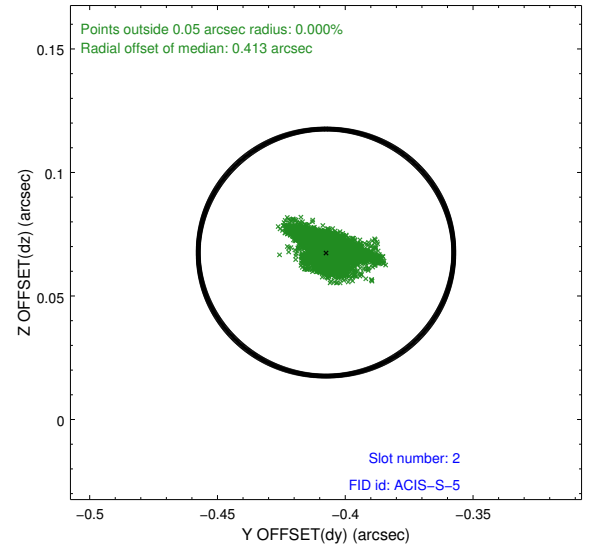
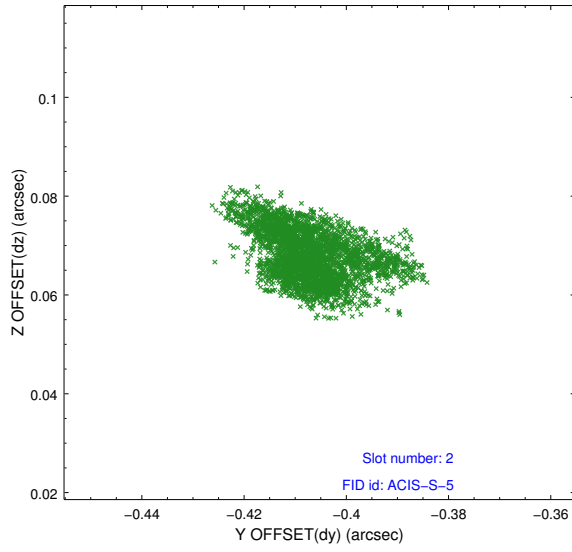
2.5.1 Slot 0



2.5.2 Slot 1



2.5.3 Slot 2



A Summary

A.1 Status

V&V Scientist	Beth Sundheim
V&V Date (YYYY-MM-DD)	2016.02.08
V&V Edition	1
V&V Disposition and Status	OK
V&V Charge Time	12.074500092983

A.2 Comments