

V&V Reference Report

L2 ASCDS Version : 10.4.2.1

Observation 18035 - L2 Version 1
Chandra X-Ray Center

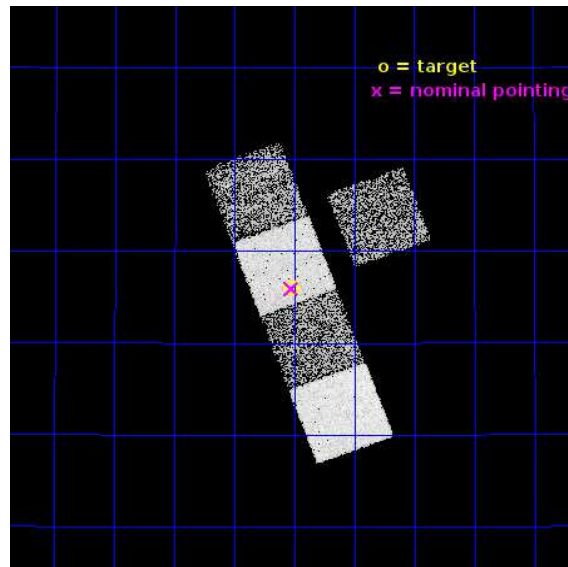
L2 Processing Date : Nov 27 2015

Contents

1	Front	2
2	OBI	3
2.1	OBI	3
2.1.1	Images	3
2.1.2	Bias	3
2.1.3	Parameters	4
2.1.4	Events	4
2.2	Compared Parameters	5
2.3	Aspect	6
2.4	Star Slots	9
2.4.1	Slot 3	9
2.4.2	Slot 4	10
2.4.3	Slot 5	11
2.4.4	Slot 6	12
2.4.5	Slot 7	13
2.5	FID Slots	14
2.5.1	Slot 0	14
2.5.2	Slot 1	15
2.5.3	Slot 2	16
A	Summary	17
A.1	Status	17
A.2	Comments	17

1 Front

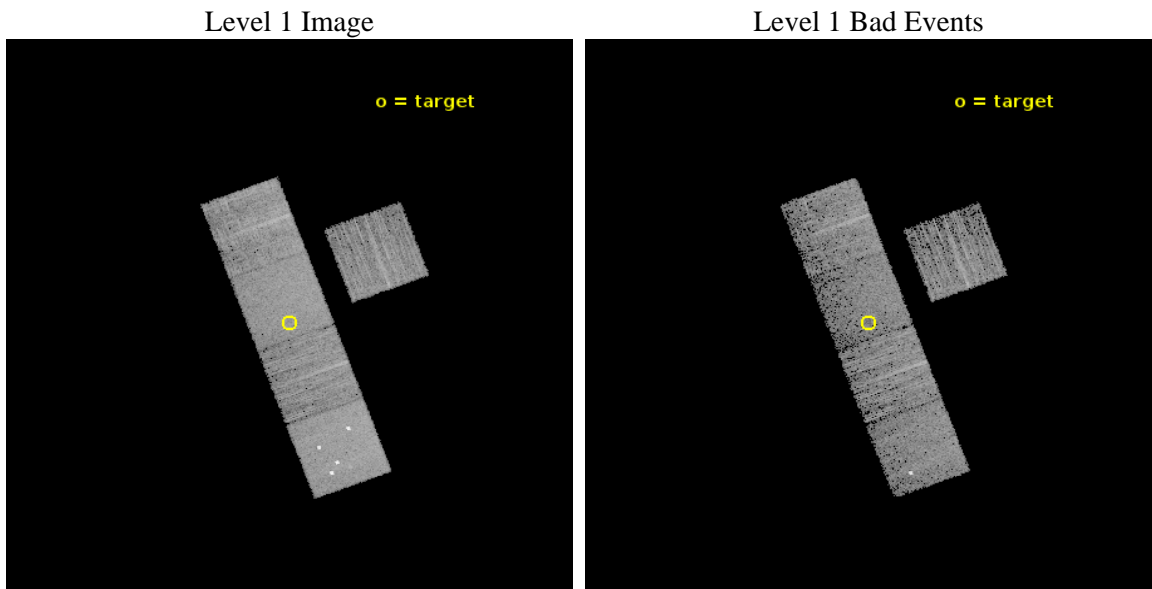
seq_num	601221	Sequence number
obs_id	18035	Observation id
title	The Most Luminous Field Early-type Galaxies	Proposal title
observer	Professor Jimmy Irwin	Principal investigator
object	NGC890	Source name
dtcycle	0	
cycle	P	events from which exps? Prim/Second/Both
ra_targ	35.504167	Observer's specified target RA [deg]
dec_targ	33.266111	Observer's specified target Dec [deg]
ra_nom	35.506602659549	Nominal RA [deg]
dec_nom	33.265385799359	Nominal Dec [deg]
roll_nom	249.57892815737	Nominal Roll [deg]
revision	1	Processing version of data
ontime	6053.3726181984	Sum of GTIs [s]
livetime	5974.2808485135	Livetime [s]
ontime3	6053.2494982481	Sum of GTIs [s]
ontime5	6053.3315782547	Sum of GTIs [s]
ontime6	6053.2905381918	Sum of GTIs [s]
ontime7	6053.3726181984	Sum of GTIs [s]
ontime8	6053.2084581852	Sum of GTIs [s]
l2events	54776	Number of level 2 events



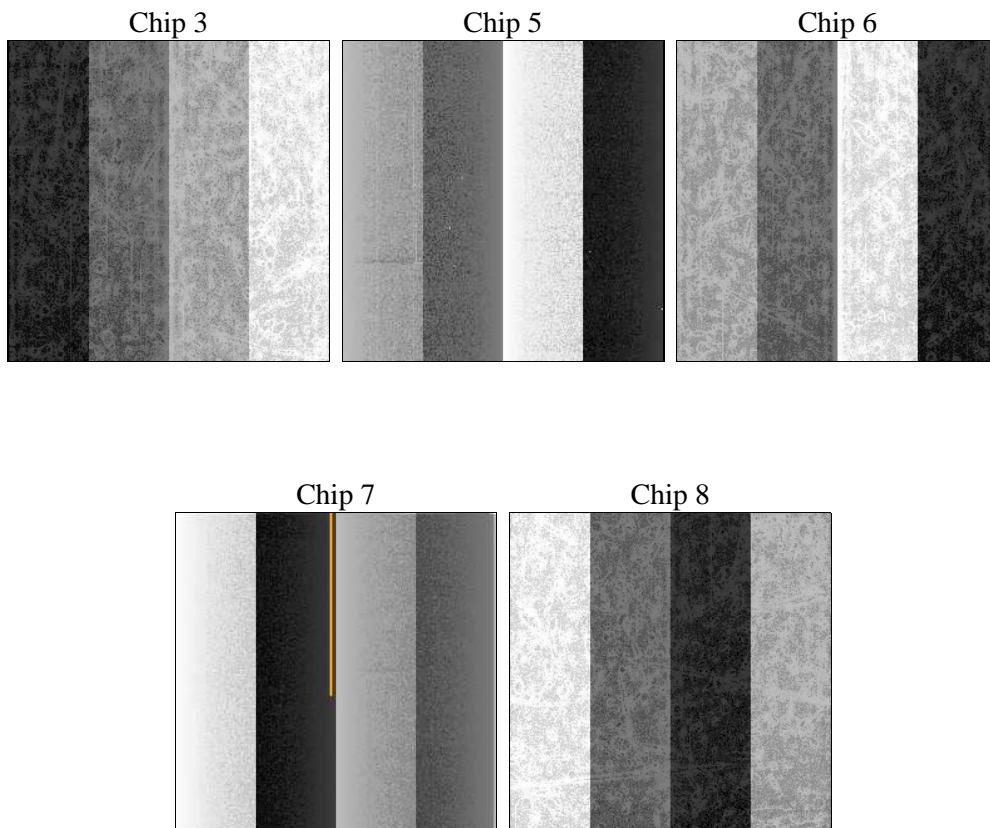
2 OBI

2.1 OBI

2.1.1 Images



2.1.2 Bias



2.1.3 Parameters

obi_num	1	Obi number	sched_exp_time	6000.000000	[s] Scheduled observation exposure time
ascdsver	10.4.2.1	Processing system revision	ontime	6053.3726181984	Sum of GTIs [s]
caldsver	4.6.10a	 	ontime3	6053.2494982481	Sum of GTIs [s]
date	2015-11-27T13:39:32	Date and time of file creation	ontime5	6053.3315782547	Sum of GTIs [s]
revision	1	Processing version of data	ontime6	6053.2905381918	Sum of GTIs [s]
			ontime7	6053.3726181984	Sum of GTIs [s]
			ontime8	6053.2084581852	Sum of GTIs [s]
			l1events	225757	Number of level 1 events

2.1.4 Events

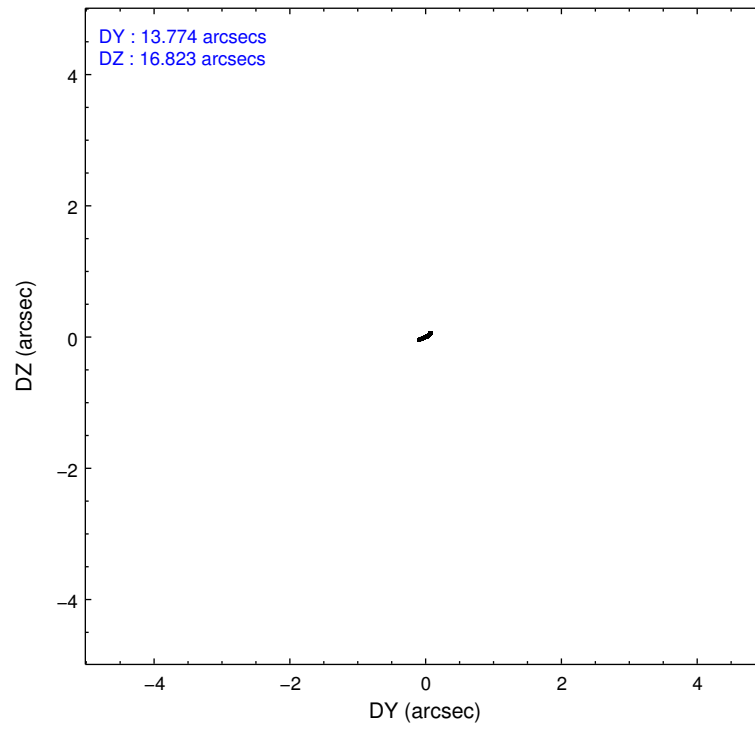
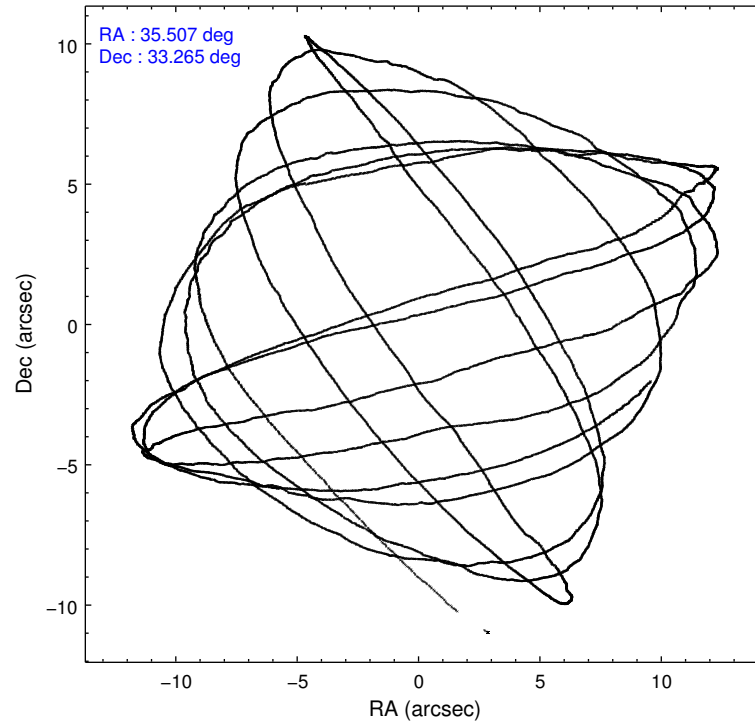
	ccd 3	ccd 5	ccd 6	ccd 7	ccd 8
level 1 events	34032	63137	37435	46222	44931
rejected events	30385	31268	33477	26579	33477
rejected %	89%	49%	89%	57%	74%

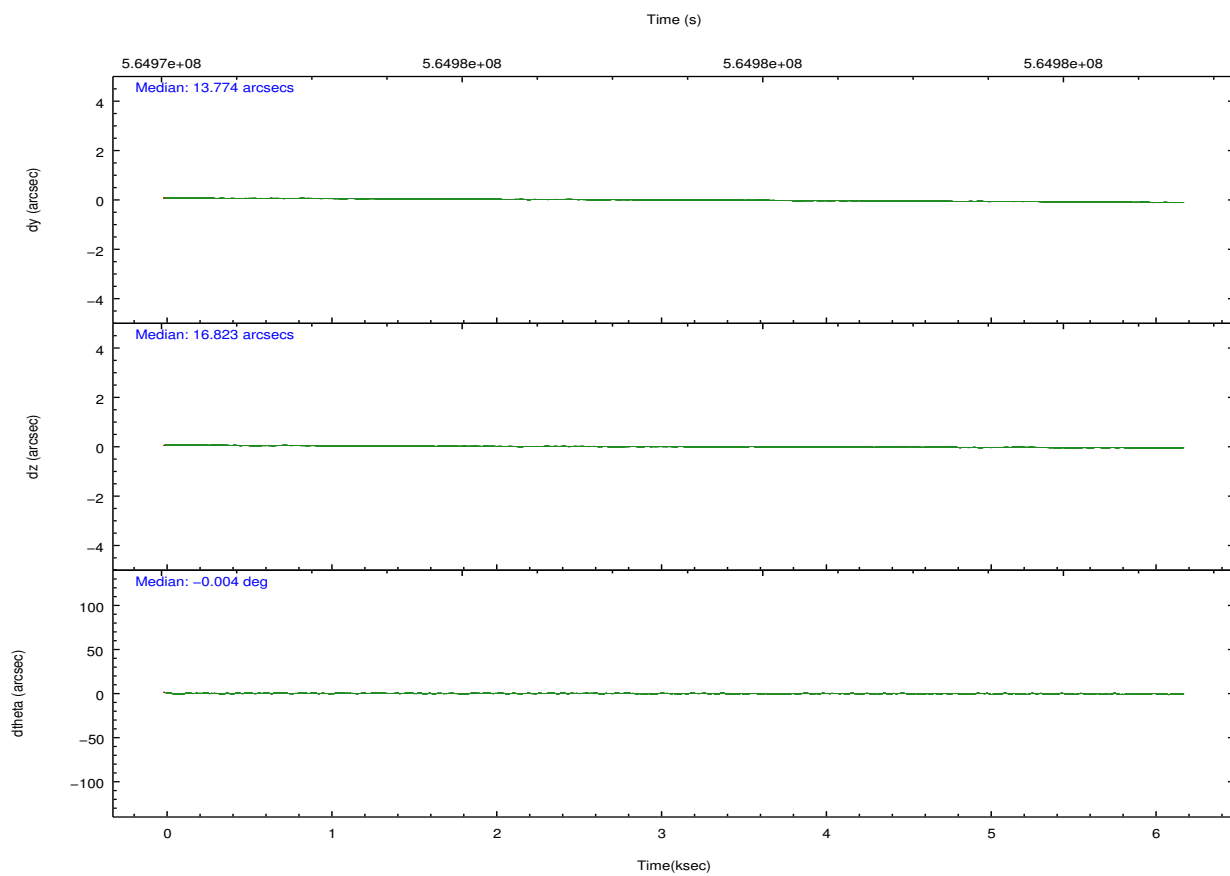
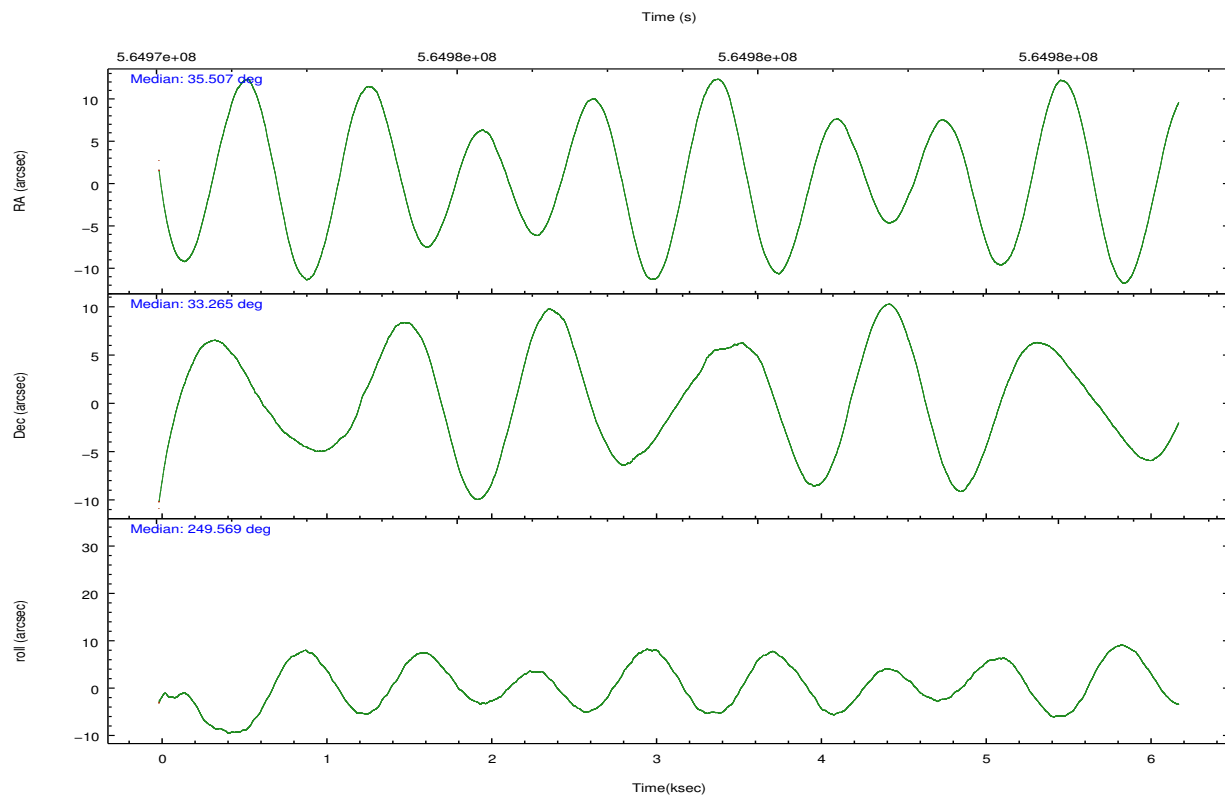
	ccd 3	ccd 5	ccd 6	ccd 7	ccd 8
grade 0 events	1182	6471	1242	1542	3136
	3%	10%	3%	3%	6%
grade 1 events	23	129	24	52	32
	0%	0%	0%	0%	0%
grade 2 events	785	8881	913	4248	2800
	2%	14%	2%	9%	6%
grade 3 events	429	788	399	1494	1210
	1%	1%	1%	3%	2%
grade 4 events	437	693	402	1524	1128
	1%	1%	1%	3%	2%
grade 5 events	1748	4026	1665	4624	2526
	5%	6%	4%	10%	5%
grade 6 events	816	15068	1007	10855	3185
	2%	23%	2%	23%	7%
grade 7 events	28612	27081	31783	21883	30914
	84%	42%	84%	47%	68%

2.2 Compared Parameters

Parameter	Planned	Actual	Parameter	Planned	Actual
Instrument	ACIS	ACIS	Obspar format version number	7	7
Detector	ACIS-35678	ACIS-35678	Obspar file type	PREDICTED	ACTUAL
Grating	NONE	NONE	Obspar update status	NONE	UPDATED
Data mode	VFAINT	VFAINT	CCD I0 on	N	N
Observation mode	POINTING	POINTING	CCD I1 on	N	N
[deg] Pointing RA	35.500746	35.50660265954933	CCD I2 on	N	N
[deg] Pointing Dec	33.292411	33.26538579935912	CCD I3 on	Y	Y
[deg] Pointing Roll	249.425510	249.5789281573711	CCD S0 on	N	N
[mm] SIM focus pos	-0.684267	-0.6828225247311905	CCD S1 on	Y	Y
[mm] SIM defocus	0	0.001444936568705701	CCD S2 on	Y	Y
[mm] SIM translation stage pos	-190.132523	-190.1425803651734	CCD S3 on	Y	Y
[mm] SIM translation stage offset	0	0.01005778216563158	CCD S4 on	O1	Y
[s] Observation start time (MET)	564974503.184000	564973467.10614	CCD S5 on	N	N
Observation start date	2015-11-27T01:20:35	2015-11-27T01:04:27	Number of optional ACIS chips dropped	0	0
[s] Observation end time (MET)	564980503.184000	564981326.80659	On-chip summing requested	N	N
Observation end date	2015-11-27T03:00:35	2015-11-27T03:15:26	Subarray requested	NONE	NONE
Read mode	TIMED	TIMED	Alternating exposures requested	N	N
			[s] Primary exposure time	0.000000	3.1

2.3 Aspect



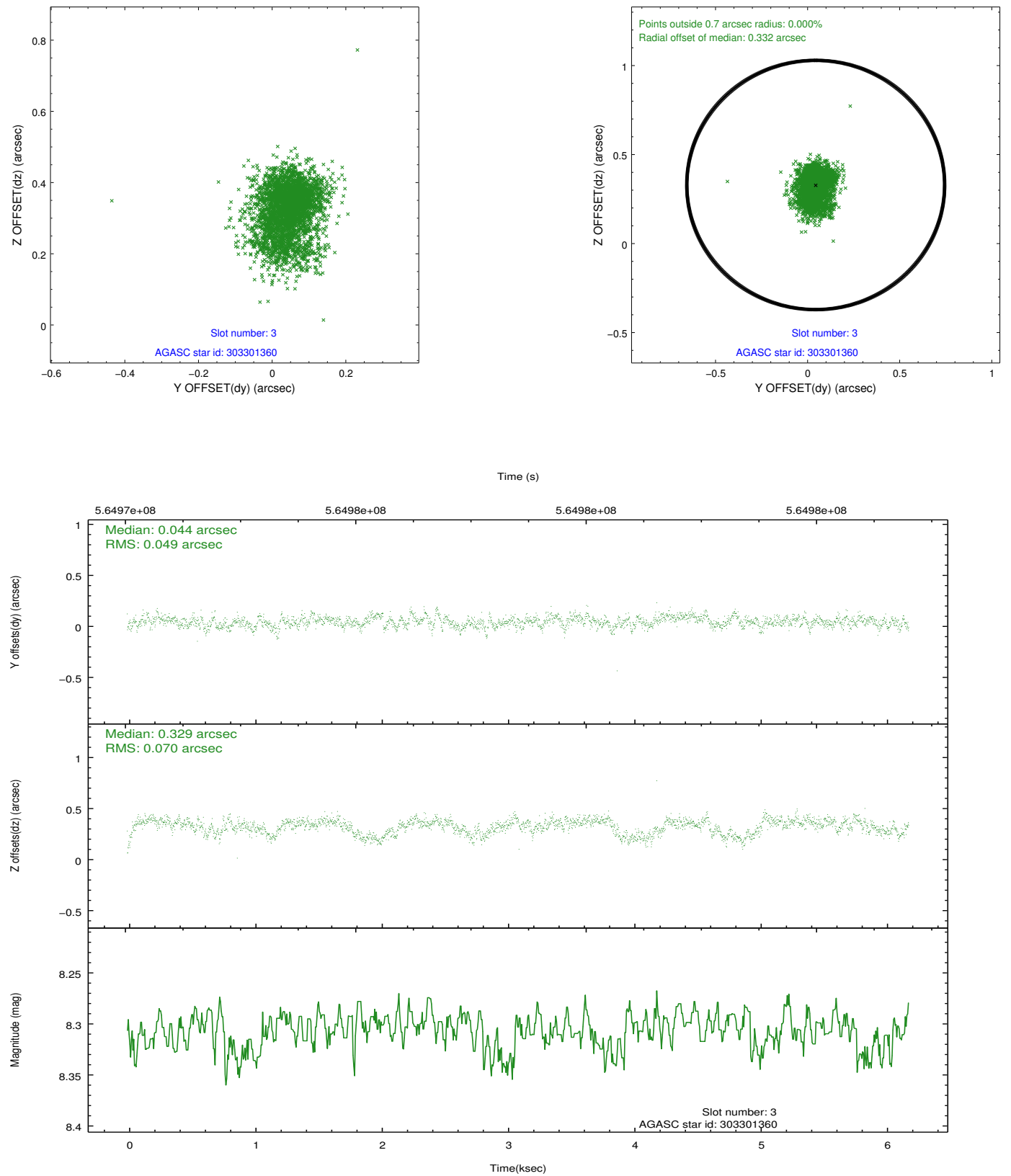


Slot Statistics

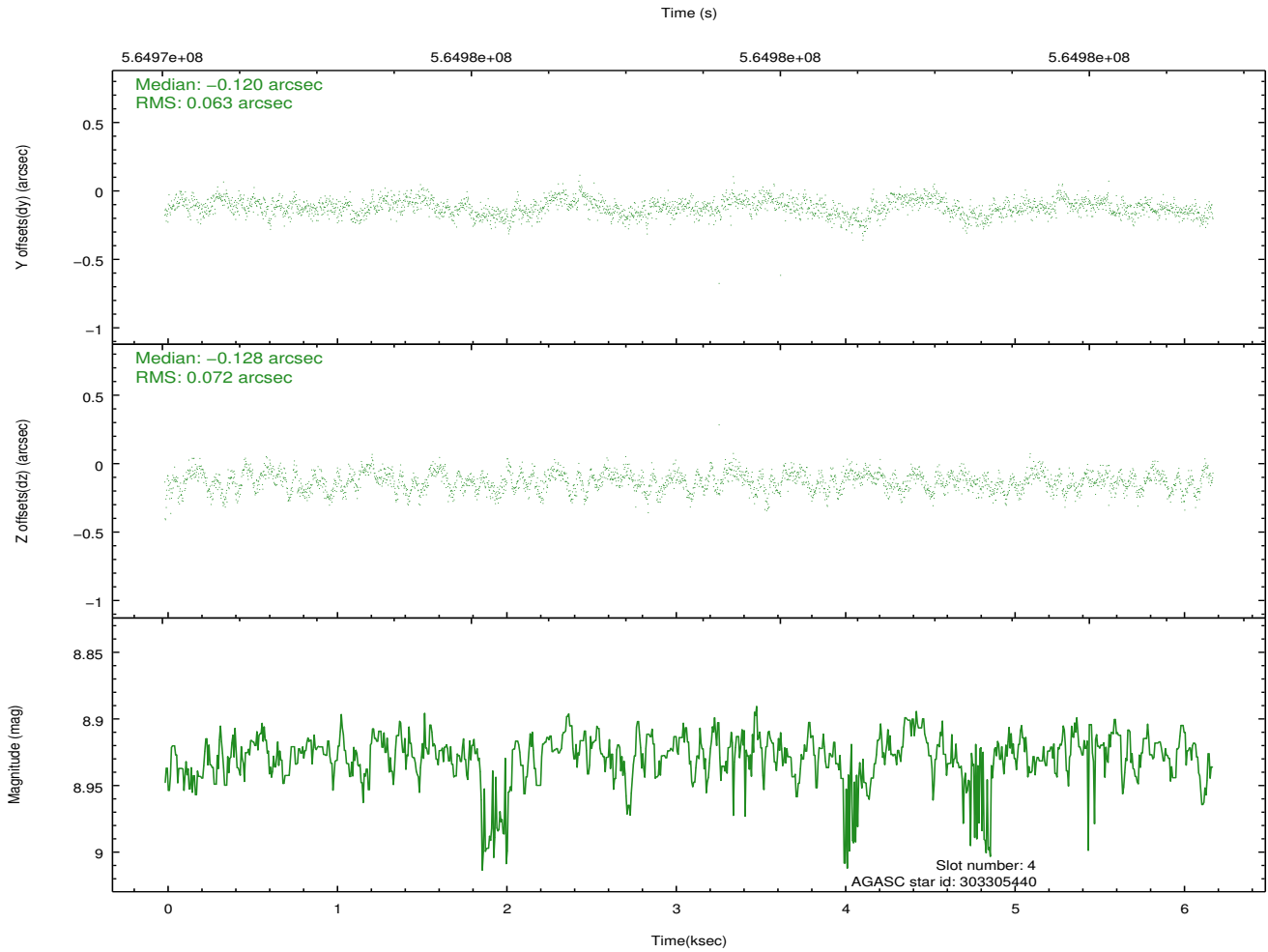
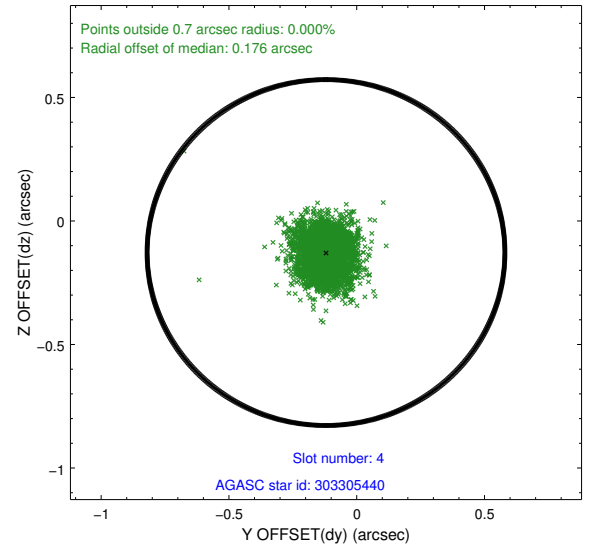
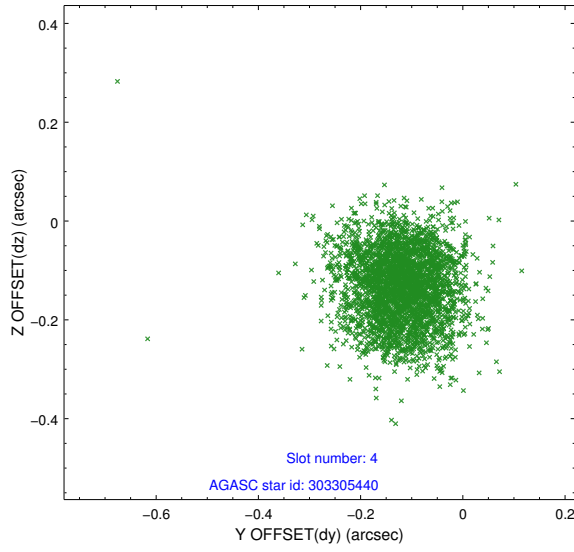
slot	status	used	id	mag	n_pts	med_dy	med_dz	dr1	dr2	ra	dec	mean_y	mean_z
0	FID		ACIS-S-2	7.14	1510	-0.133	-0.103	0.007	0.011	0.000000	0.000000	-766.83	-1738.31
1	FID		ACIS-S-4	7.24	1510	0.417	0.092	0.005	0.010	0.000000	0.000000	2146.55	169.39
2	FID		ACIS-S-5	7.26	1510	-0.315	0.020	0.006	0.011	0.000000	0.000000	-1818.64	164.06
3	GUIDE	used	303301360	8.31	3015	0.044	0.329	0.088	0.151	35.139706	33.521604	-392.92	-1304.64
4	GUIDE	used	303305440	8.93	3016	-0.120	-0.128	0.101	0.160	35.763745	33.026417	616.42	1079.08
5	GUIDE	used	303306224	8.17	3019	-0.086	-0.262	0.135	0.195	35.859743	32.688161	1652.67	1782.75
6	GUIDE	used	303307232	9.65	3013	0.033	-0.012	0.172	0.286	34.901844	33.242569	797.97	-1626.08
7	GUIDE	used	303313744	8.46	3016	0.129	0.093	0.090	0.144	34.832218	33.603802	-350.09	-2273.18

2.4 Star Slots

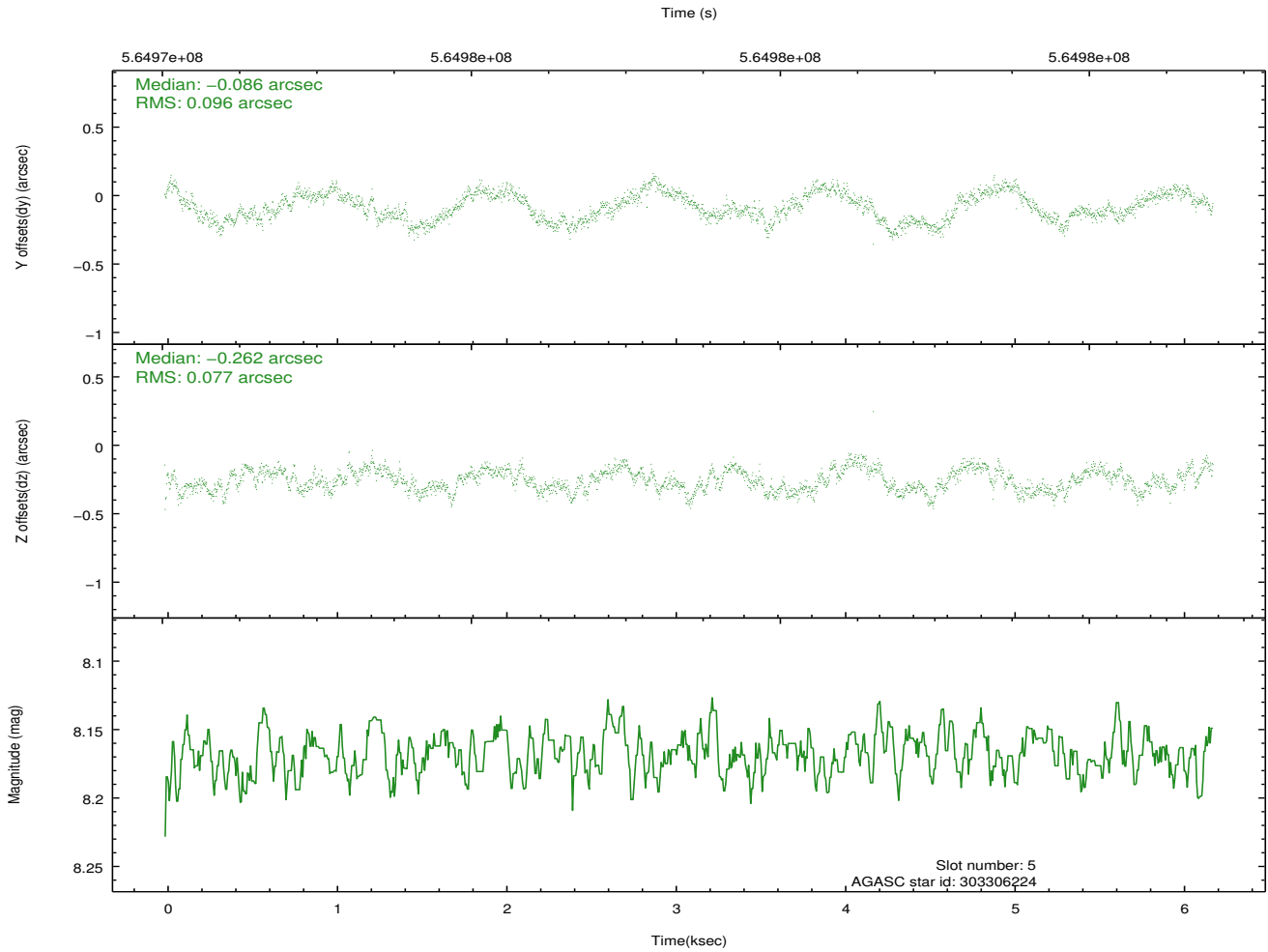
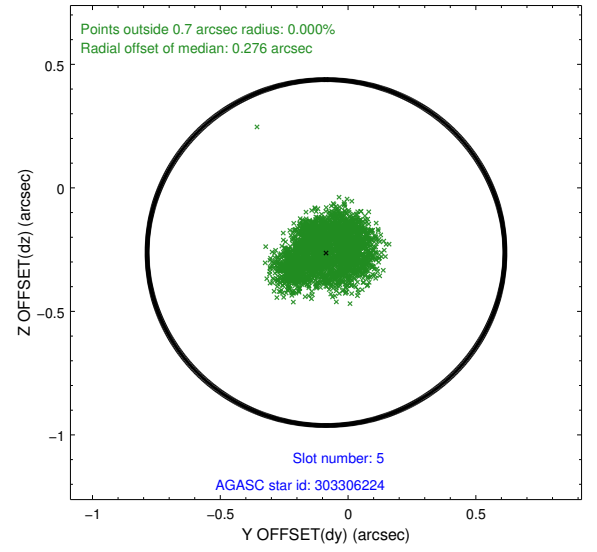
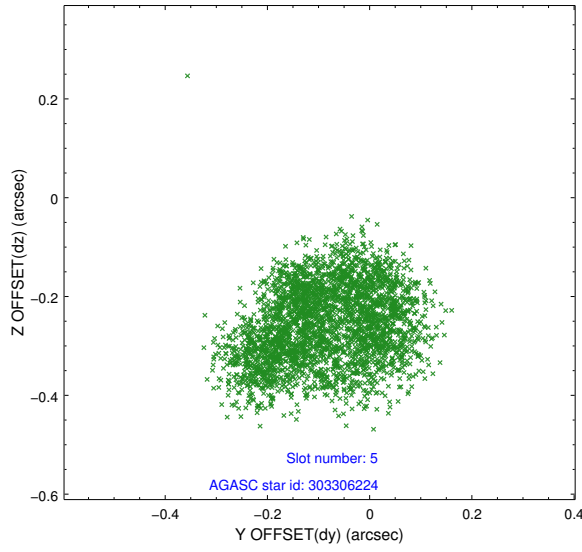
2.4.1 Slot 3



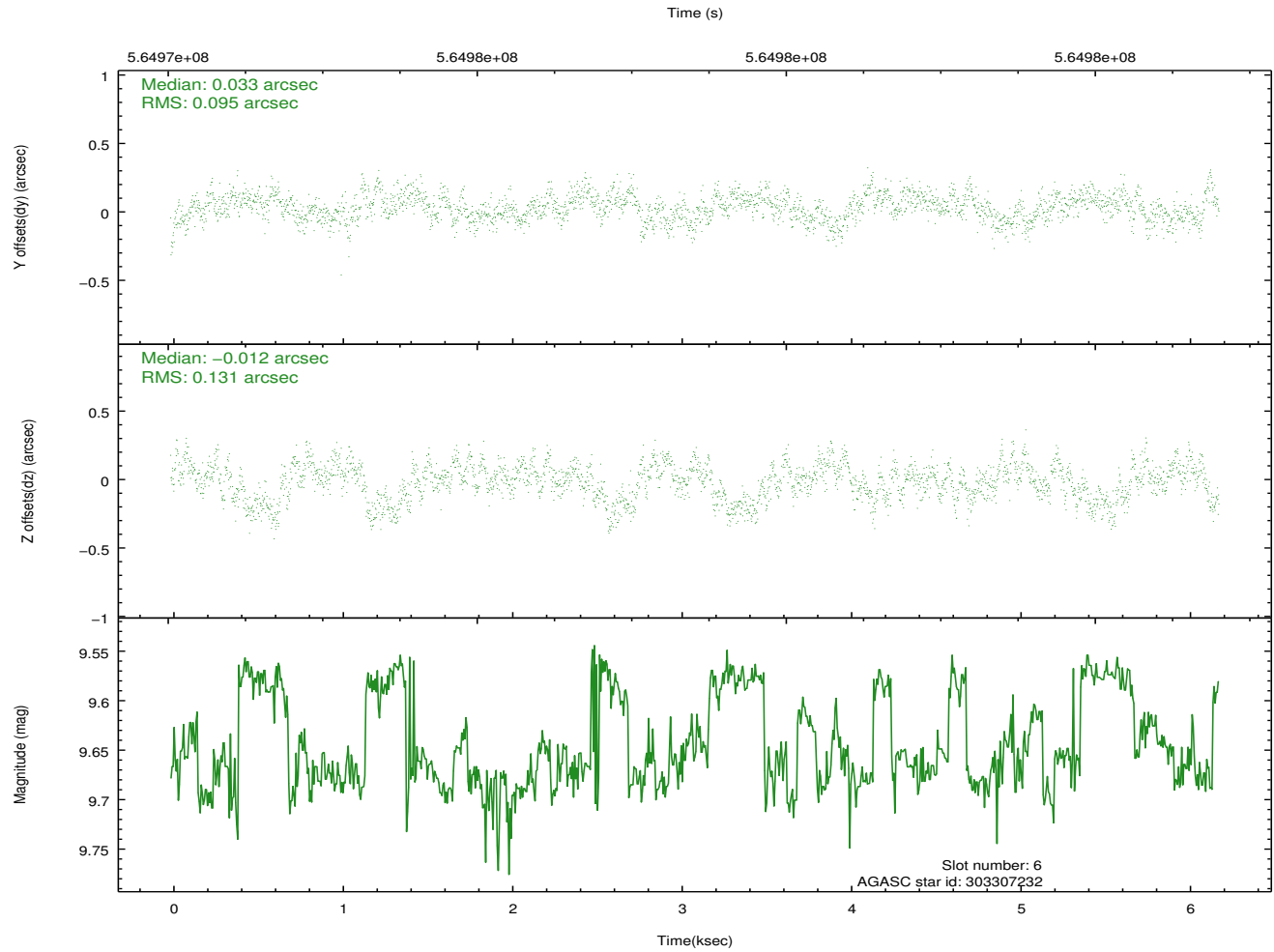
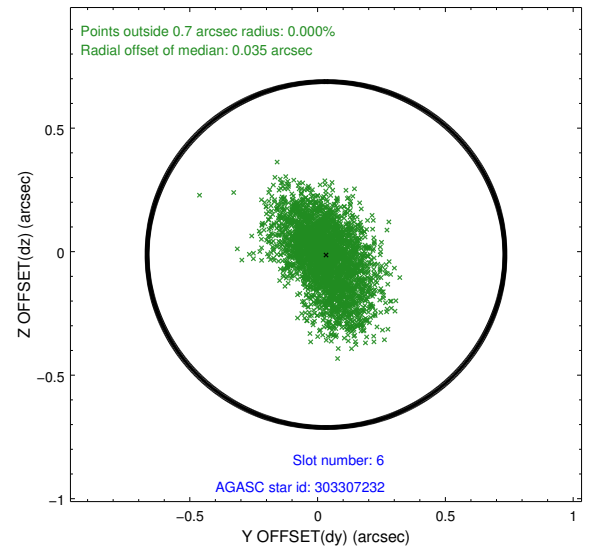
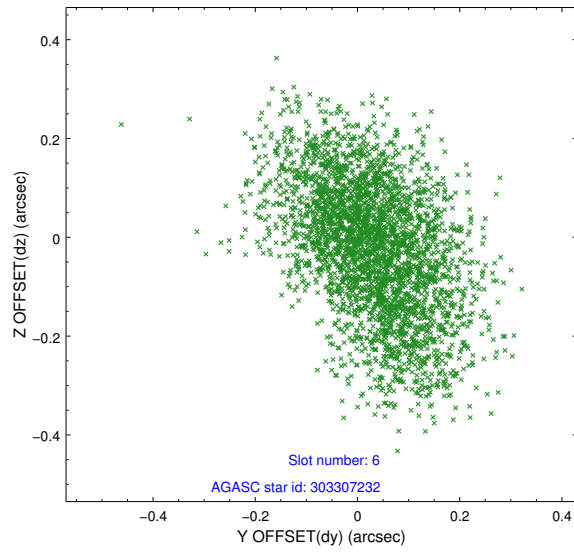
2.4.2 Slot 4



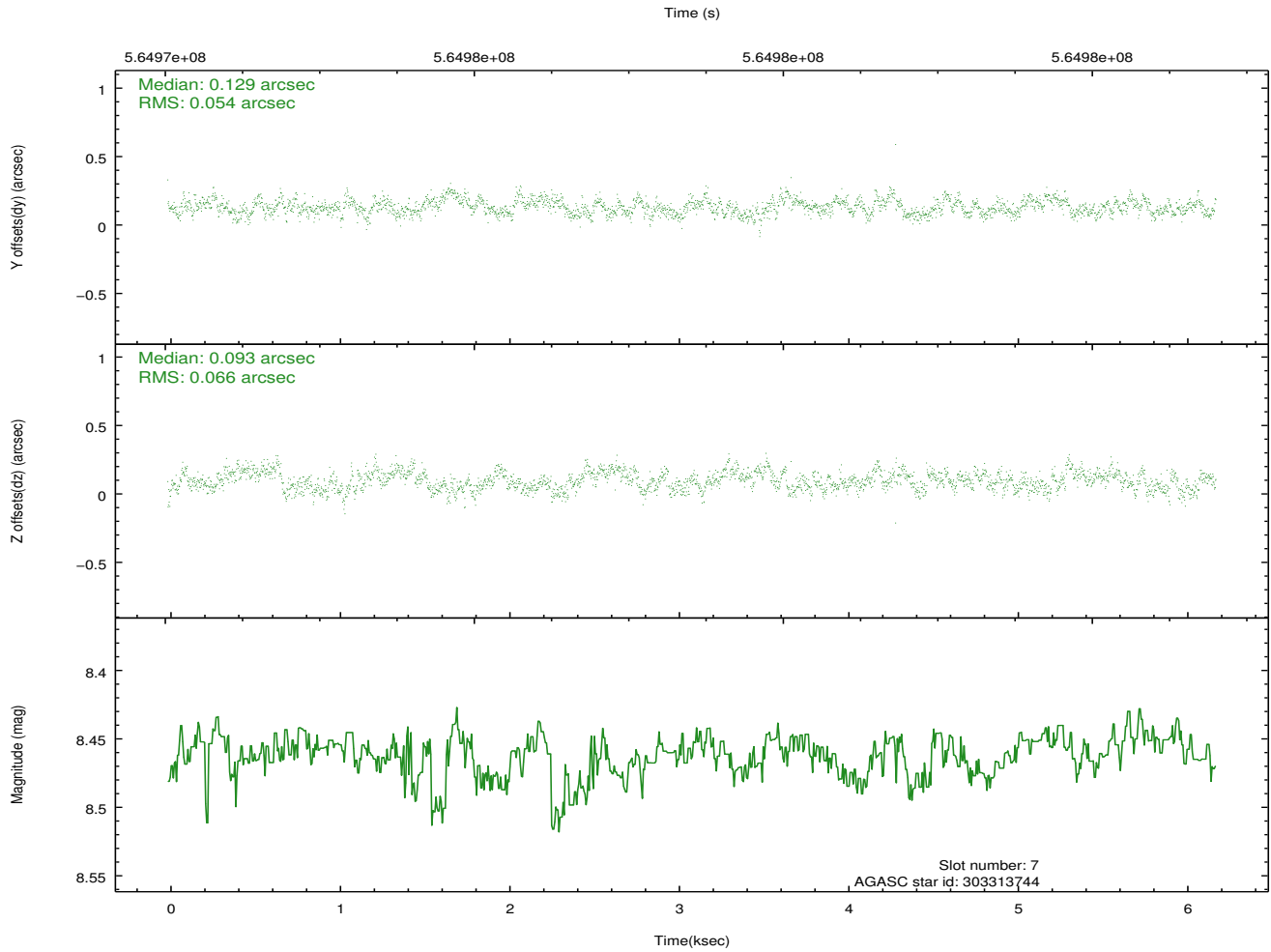
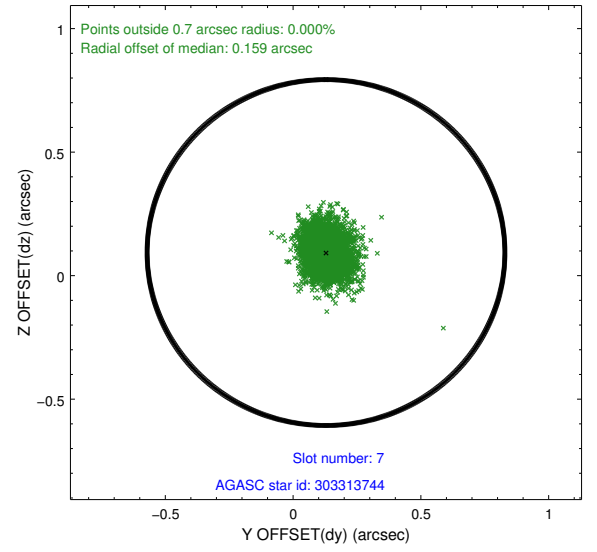
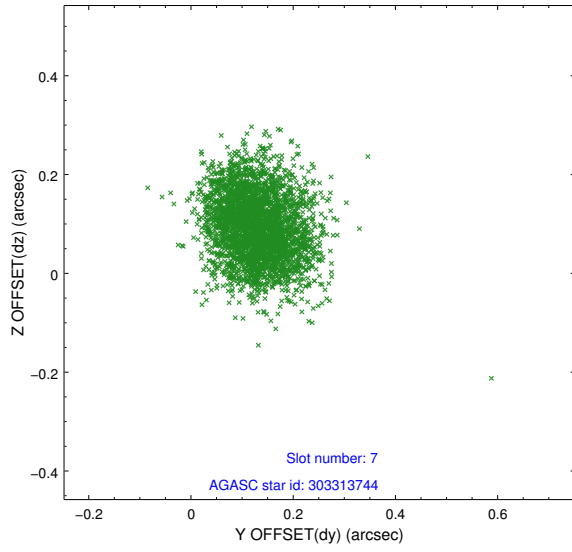
2.4.3 Slot 5



2.4.4 Slot 6

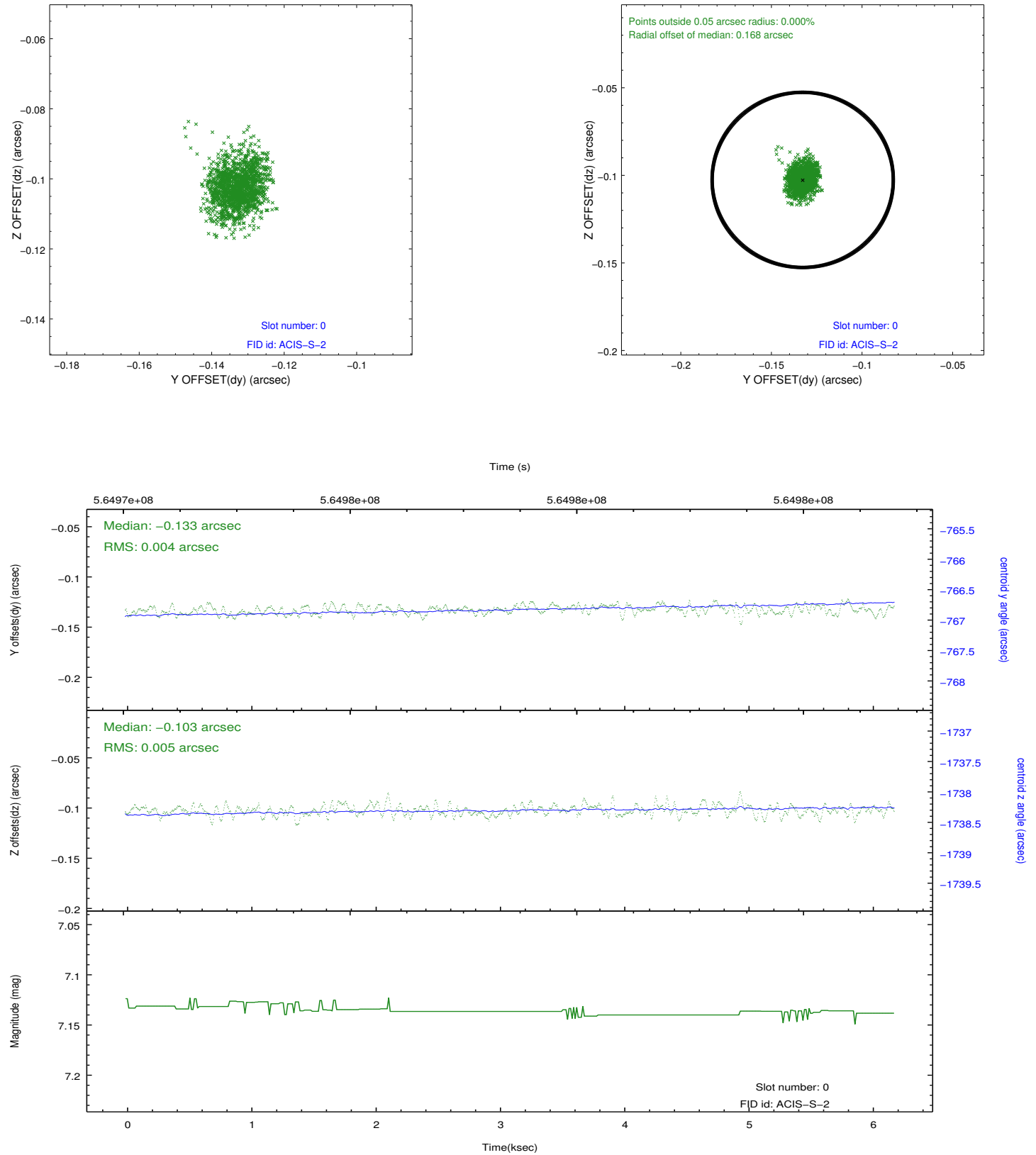


2.4.5 Slot 7

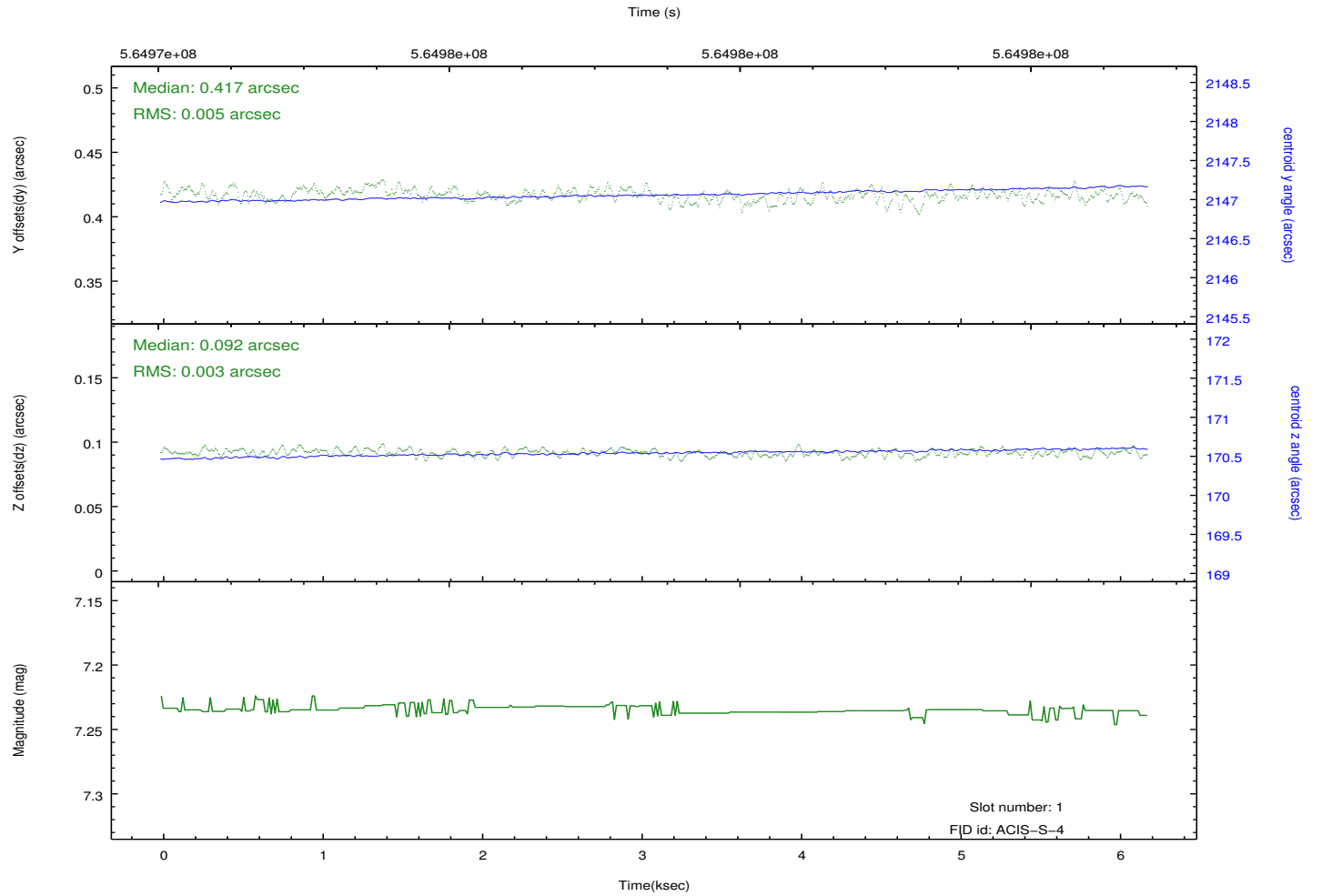
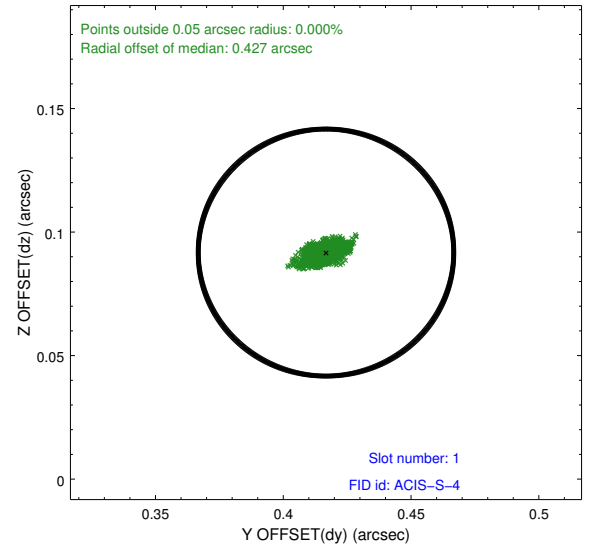
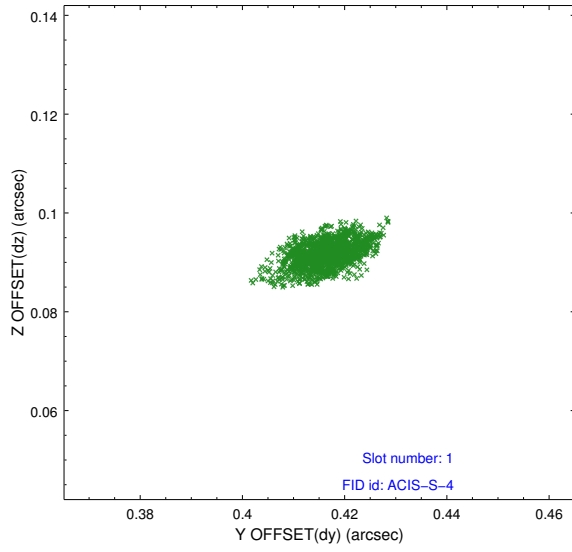


2.5 FID Slots

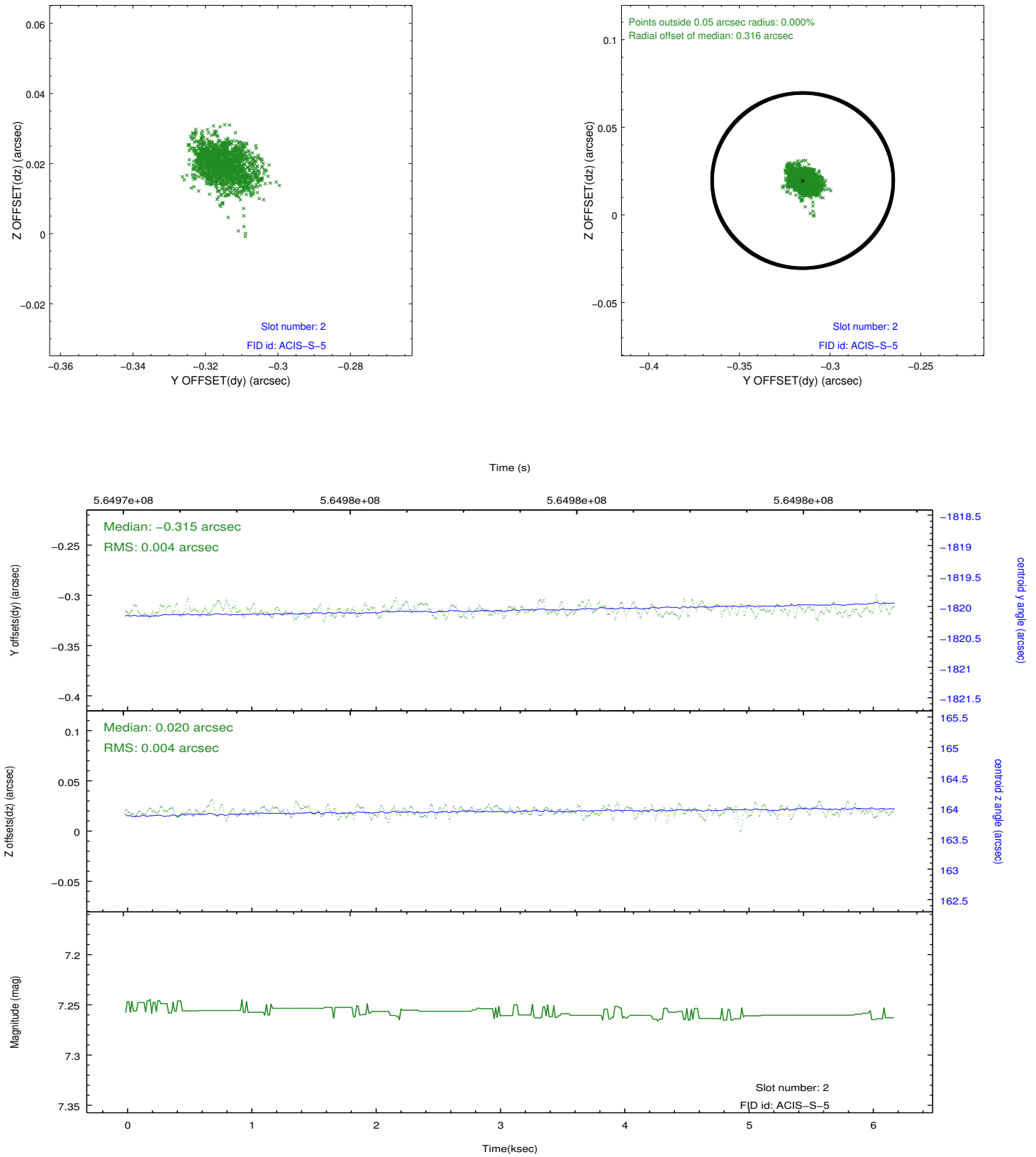
2.5.1 Slot 0



2.5.2 Slot 1



2.5.3 Slot 2



A Summary

A.1 Status

V&V Scientist	Joy Nichols
V&V Date (YYYY-MM-DD)	2015.11.30
V&V Edition	1
V&V Disposition and Status	OK
V&V Charge Time	6.0533726181984

A.2 Comments