

V&V Reference Report

L2 ASCDS Version : 10.4.3.1

Observation 18015 - L2 Version 1
Chandra X-Ray Center

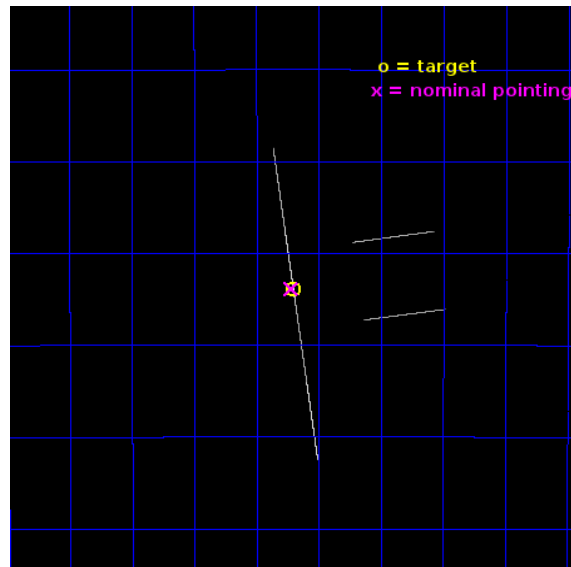
L2 Processing Date : Apr 25 2016

Contents

1	Front	2
2	OBI	3
2.1	OBI	3
2.1.1	Images	3
2.1.2	Bias	3
2.1.3	Parameters	4
2.1.4	Events	4
2.2	Compared Parameters	5
2.3	Aspect	6
2.4	Star Slots	9
2.4.1	Slot 3	9
2.4.2	Slot 4	10
2.4.3	Slot 5	11
2.4.4	Slot 6	12
2.4.5	Slot 7	13
2.5	FID Slots	14
2.5.1	Slot 0	14
2.5.2	Slot 1	15
2.5.3	Slot 2	16
A	Summary	17
A.1	Status	17
A.2	Comments	17

1 Front

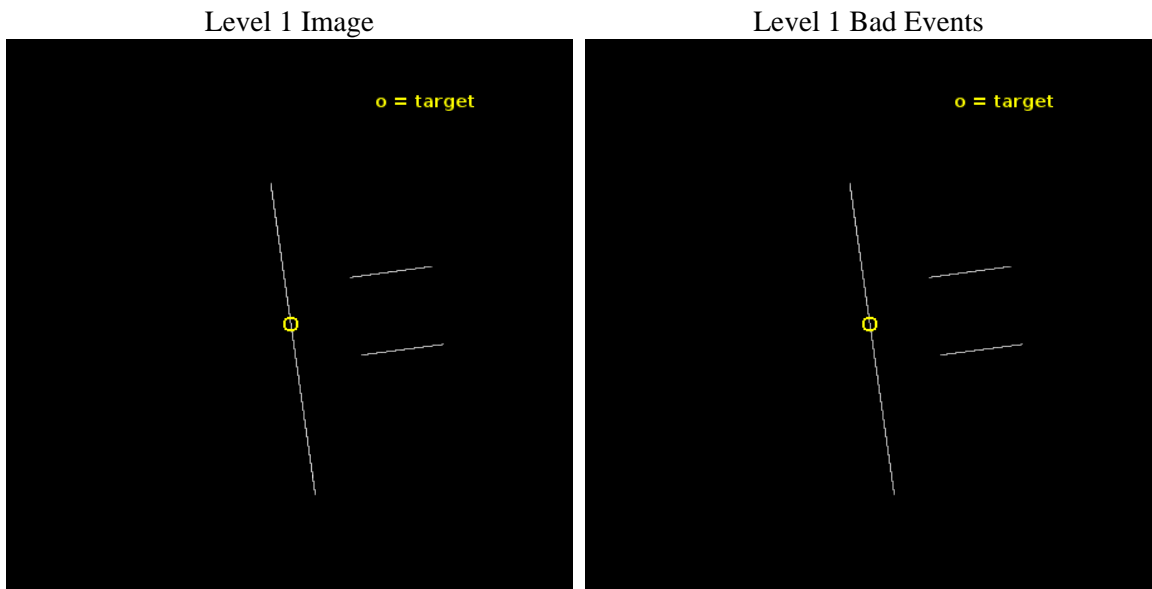
seq_num	502634	Sequence number
obs_id	18015	Observation id
title	Target-of-Opportunity Chandra Observations of Magnetars in Outburst	
observer	Victoria Kaspi	Principal investigator
object	SGR 0755-2933	Source name
ra_targ	118.92697	Observer's specified target RA [deg]
dec_targ	-29.5649	Observer's specified target Dec [deg]
ra_nom	118.92985214337	Nominal RA [deg]
dec_nom	-29.564744822411	Nominal Dec [deg]
roll_nom	262.15801388615	Nominal Roll [deg]
revision	1	Processing version of data
ontime	15071.0	Sum of GTIs [s]
livetime	15012.12890625	Livetime [s]
ontime2	15071.0	Sum of GTIs [s]
ontime3	15071.0	Sum of GTIs [s]
ontime5	15071.0	Sum of GTIs [s]
ontime6	15071.0	Sum of GTIs [s]
ontime7	15071.0	Sum of GTIs [s]
ontime8	15071.0	Sum of GTIs [s]
l2events	180730	Number of level 2 events



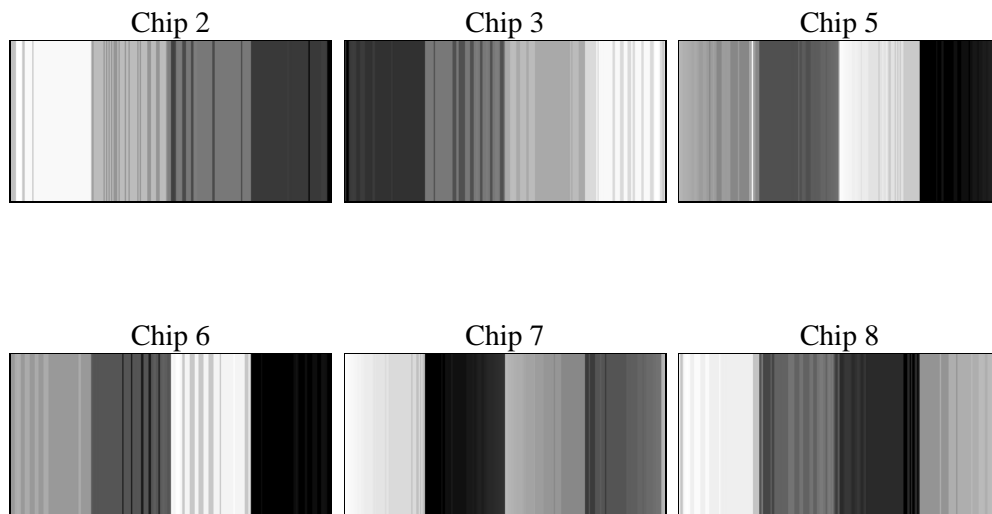
2 OBI

2.1 OBI

2.1.1 Images



2.1.2 Bias



2.1.3 Parameters

obi_num	0	Obi number	sched_exp_time	15000.000000	[s] Scheduled observation exposure time
ascdsver	10.4.3.1	Processing system revision	ontime	15071.0	Sum of GTIs [s]
caldsver	4.7.1	 	ontime2	15071.0	Sum of GTIs [s]
date	2016-04-25T18:23:49	Date and time of file creation	ontime3	15071.0	Sum of GTIs [s]
revision	1	Processing version of data	ontime5	15071.0	Sum of GTIs [s]
			ontime6	15071.0	Sum of GTIs [s]
			ontime7	15071.0	Sum of GTIs [s]
			ontime8	15071.0	Sum of GTIs [s]
			l1events	1182357	Number of level 1 events

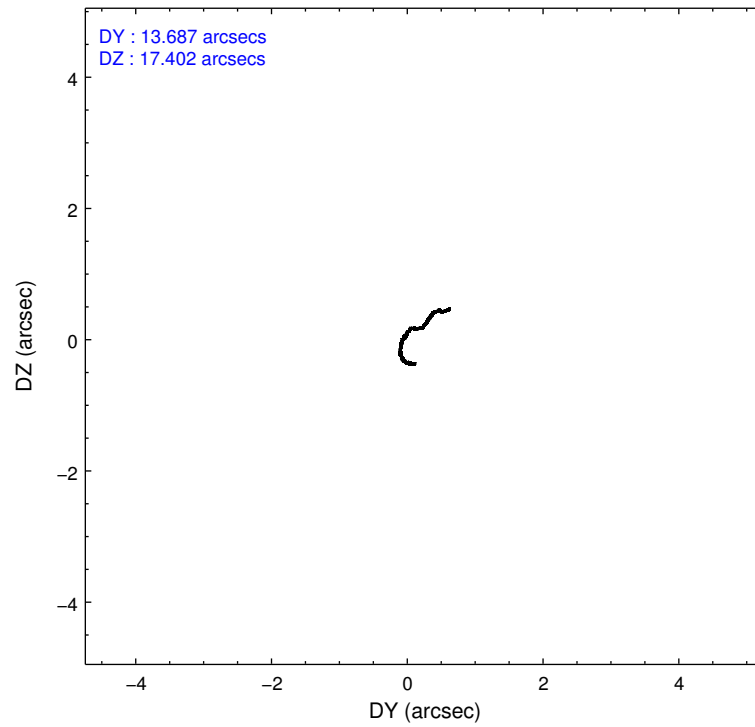
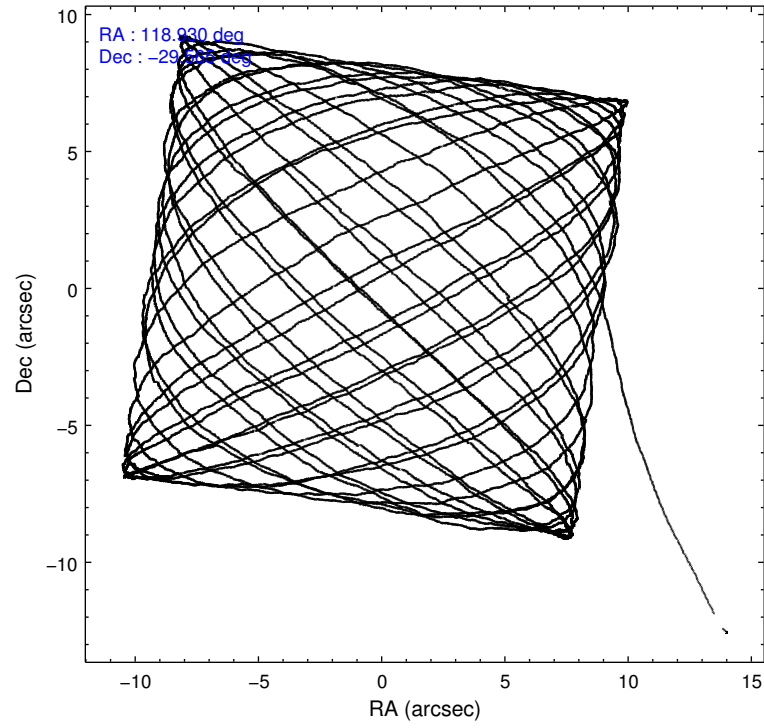
2.1.4 Events

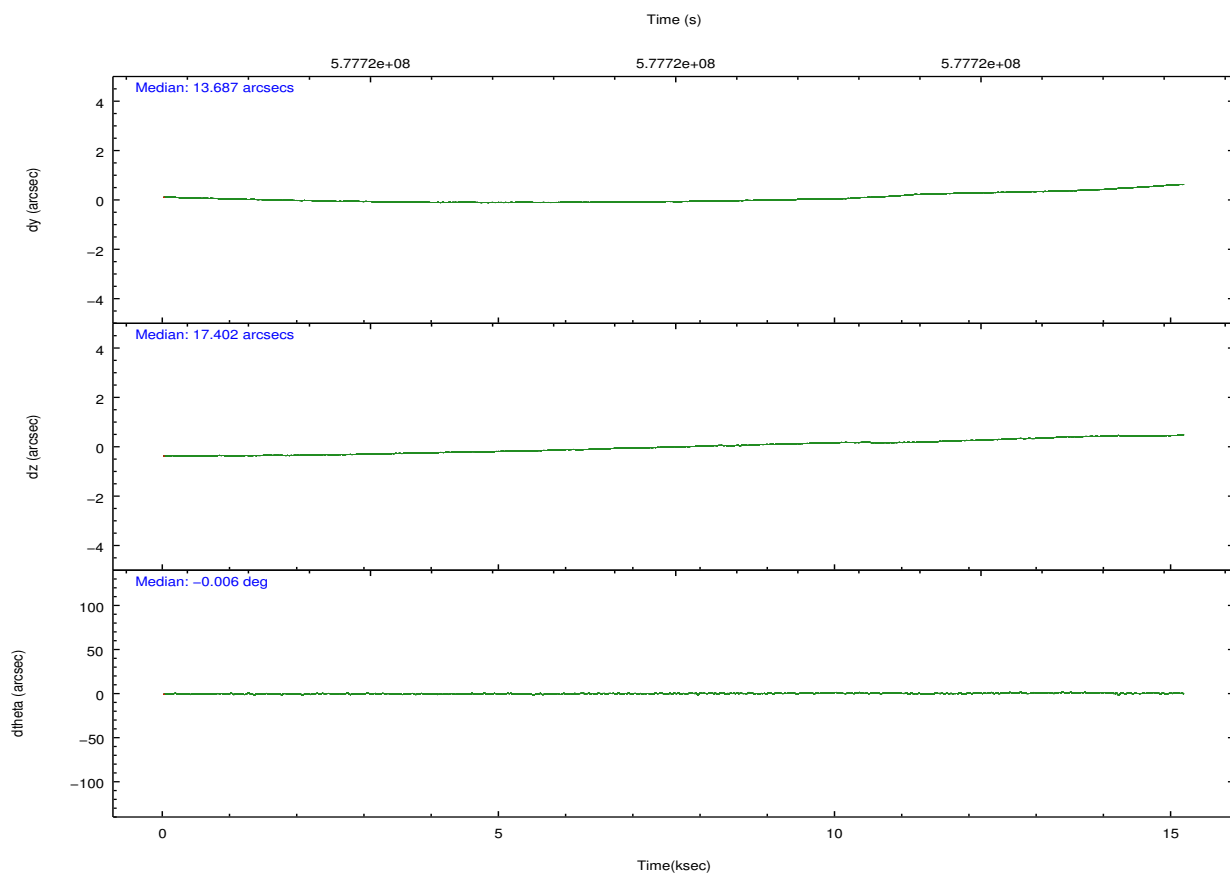
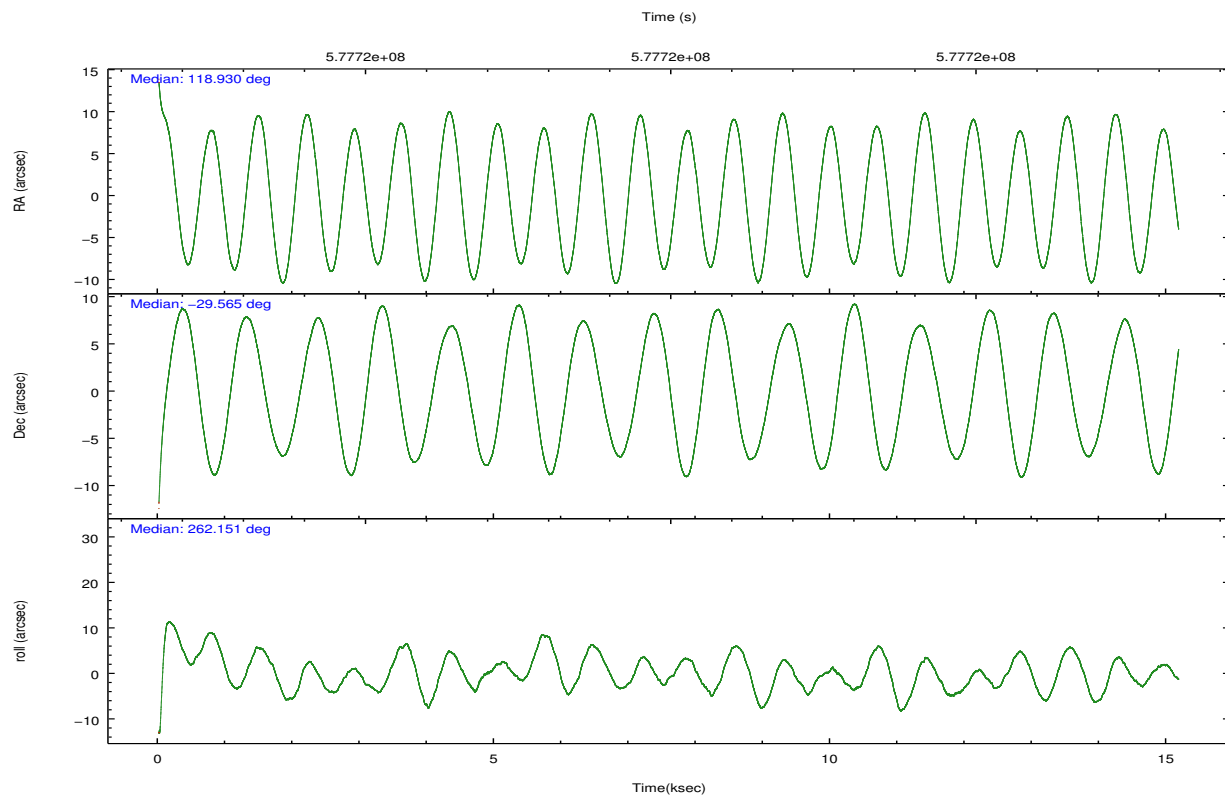
	ccd 2	ccd 3	ccd 5	ccd 6	ccd 7	ccd 8		ccd 2	ccd 3	ccd 5	ccd 6	ccd 7	ccd 8
level 1 events	165561	158957	260490	156514	180053	260782	grade 0 events	1654	1775	48121	1685	4256	8855
rejected events	151642	144057	125939	140952	121812	219524		0%	1%	18%	1%	2%	3%
rejected %	91%	90%	48%	90%	67%	84%	grade 1 events	69	95	302	106	166	177
								0%	0%	0%	0%	0%	0%
							grade 2 events	5282	5275	37794	5666	15790	12526
								3%	3%	14%	3%	8%	4%
							grade 3 events	1783	2137	1996	2121	2956	4203
								1%	1%	0%	1%	1%	1%
							grade 4 events	1810	1851	1892	1833	2919	4138
								1%	1%	0%	1%	1%	1%
							grade 5 events	4020	4482	10234	4889	11558	7074
								2%	2%	3%	3%	6%	2%
							grade 6 events	3392	3863	44761	4263	32344	11539
								2%	2%	17%	2%	17%	4%
							grade 7 events	147551	139479	115390	135951	110064	212270
								89%	87%	44%	86%	61%	81%

2.2 Compared Parameters

Parameter	Planned	Actual	Parameter	Planned	Actual
Instrument	ACIS	ACIS	Obspar format version number	7	7
Detector	ACIS-235678	ACIS-235678	Obspar file type	PREDICTED	ACTUAL
Grating	NONE	NONE	Obspar update status	NONE	UPDATED
Data mode	CC33_FAINT	CC33_FAINT	CCD I0 on	N	N
Observation mode	POINTING	POINTING	CCD I1 on	N	N
[deg] Pointing RA	118.917531	118.9298521433703	CCD I2 on	O2	Y
[deg] Pointing Dec	-29.539460	-29.56474482241131	CCD I3 on	O3	Y
[deg] Pointing Roll	261.995328	262.1580138861495	CCD S0 on	N	N
[mm] SIM focus pos	-0.684267	-0.6828225247311905	CCD S1 on	O1	Y
[mm] SIM defocus	0	0.001444936568705701	CCD S2 on	Y	Y
[mm] SIM translation stage pos	-190.132523	-190.1425803651734	CCD S3 on	Y	Y
[mm] SIM translation stage offset	0	0.01005778216563158	CCD S4 on	Y	Y
[s] Observation start time (MET)	577712579.184000	577711546.61641	CCD S5 on	N	N
Observation start date	2016-04-22T11:41:51	2016-04-22T11:25:46	Number of optional ACIS chips dropped	0	0
[s] Observation end time (MET)	577727579.184000	577728463.72987	On-chip summing requested	N	N
Observation end date	2016-04-22T15:51:51	2016-04-22T16:07:43	Subarray requested	NONE	NONE
Read mode	CONTINUOUS	CONTINUOUS	Alternating exposures requested	N	N
			[s] Primary exposure time	0.000000	0

2.3 Aspect



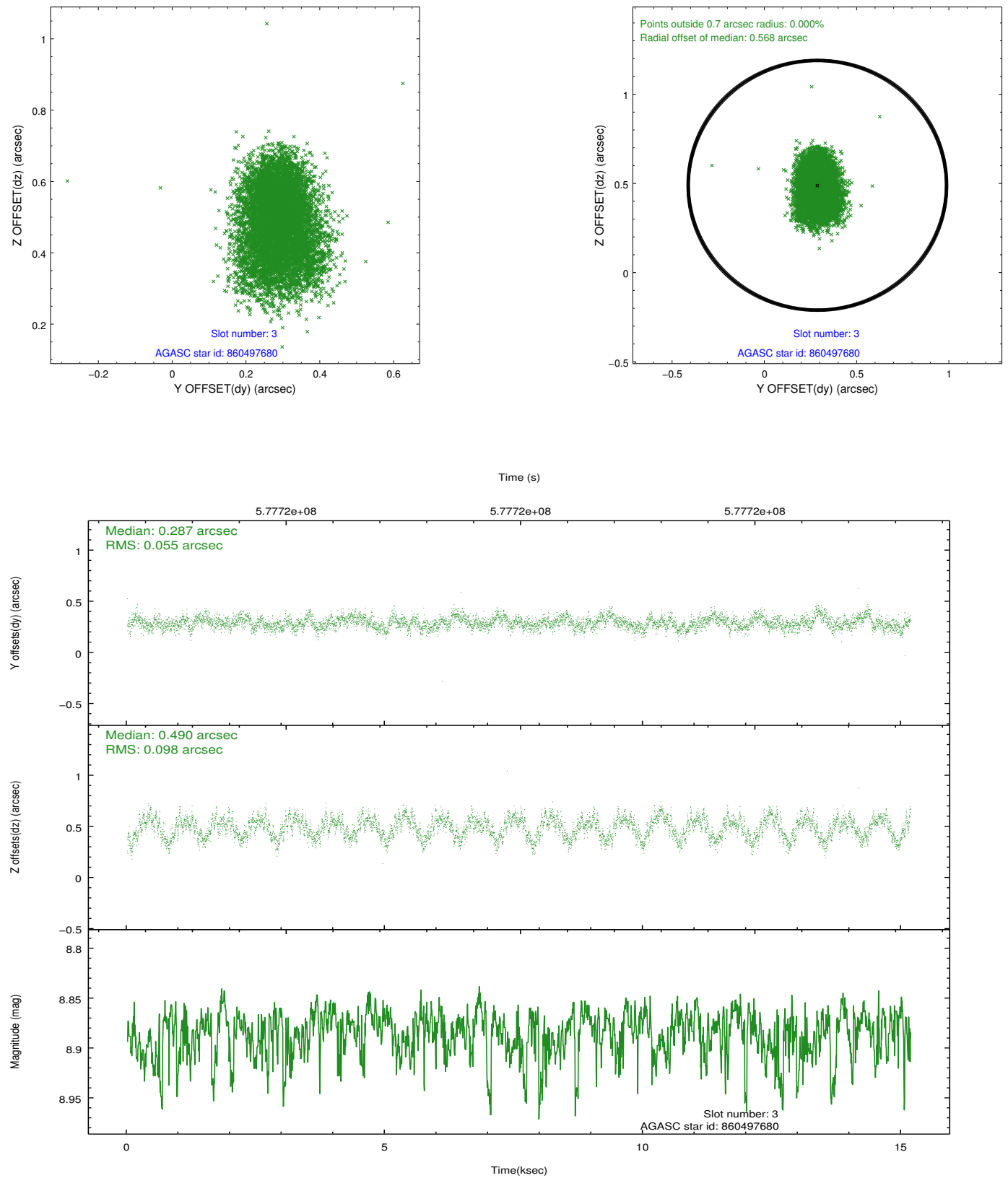


Slot Statistics

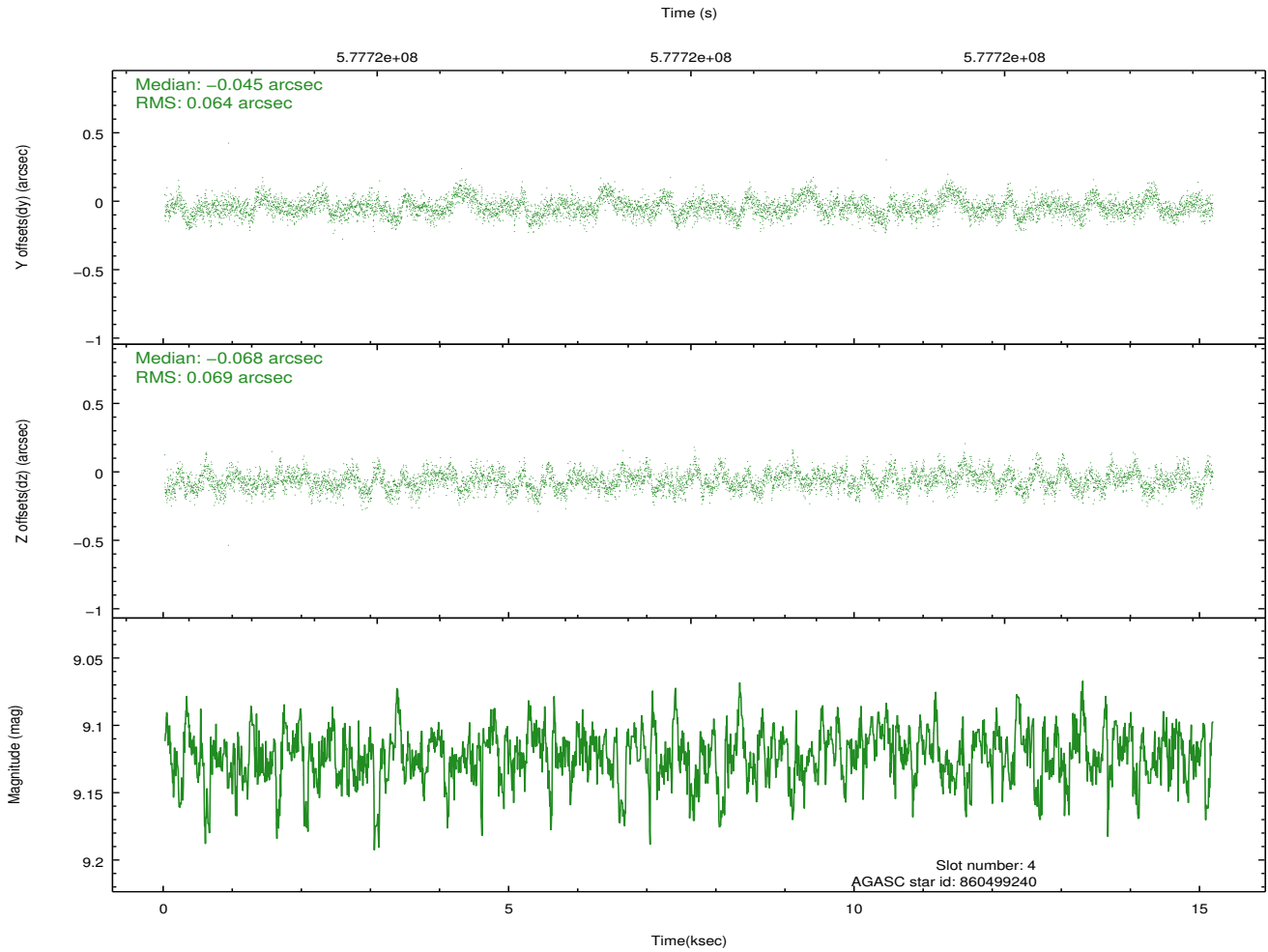
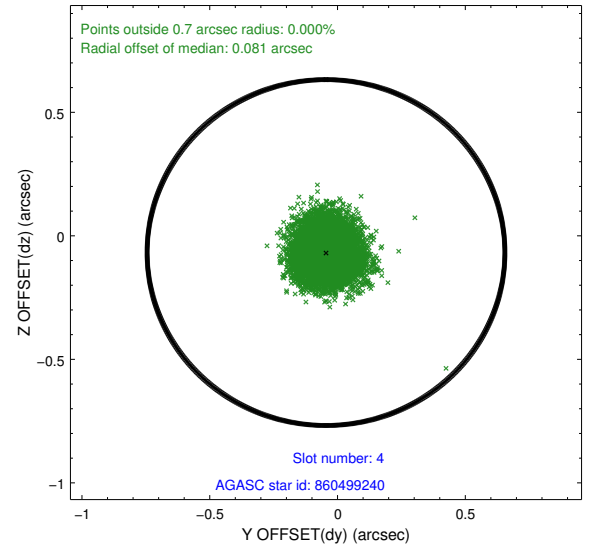
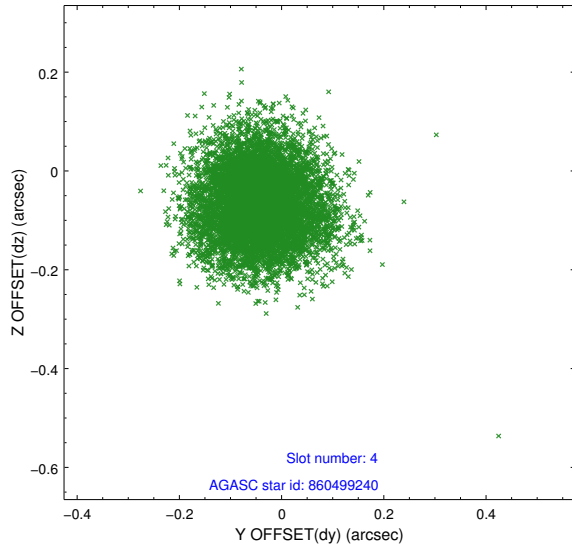
slot	status	used	id	mag	n_pts	med_dy	med_dz	dr1	dr2	ra	dec	mean_y	mean_z
0	FID		ACIS-S-1	7.22	3701	0.084	-0.057	0.016	0.024	0.000000	0.000000	929.43	-1734.47
1	FID		ACIS-S-4	7.22	3701	0.312	0.002	0.011	0.018	0.000000	0.000000	2147.20	169.45
2	FID		ACIS-S-5	7.24	3700	-0.423	0.067	0.008	0.013	0.000000	0.000000	-1819.59	163.39
3	GUIDE	used	860497680	8.88	7393	0.287	0.490	0.120	0.192	118.416268	-29.122994	-1260.94	-1768.94
4	GUIDE	used	860499240	9.12	7397	-0.045	-0.068	0.101	0.160	118.745825	-29.763474	873.93	-419.10
5	GUIDE	used	860622216	8.95	7396	-0.214	-0.266	0.132	0.261	119.319150	-29.711564	440.96	1329.95
6	GUIDE	used	860510912	8.96	7394	0.090	0.140	0.090	0.145	119.267458	-29.244029	-1204.20	940.90
7	GUIDE	used	860639000	9.16	7391	-0.128	-0.293	0.129	0.204	119.656952	-29.664574	131.03	2354.20

2.4 Star Slots

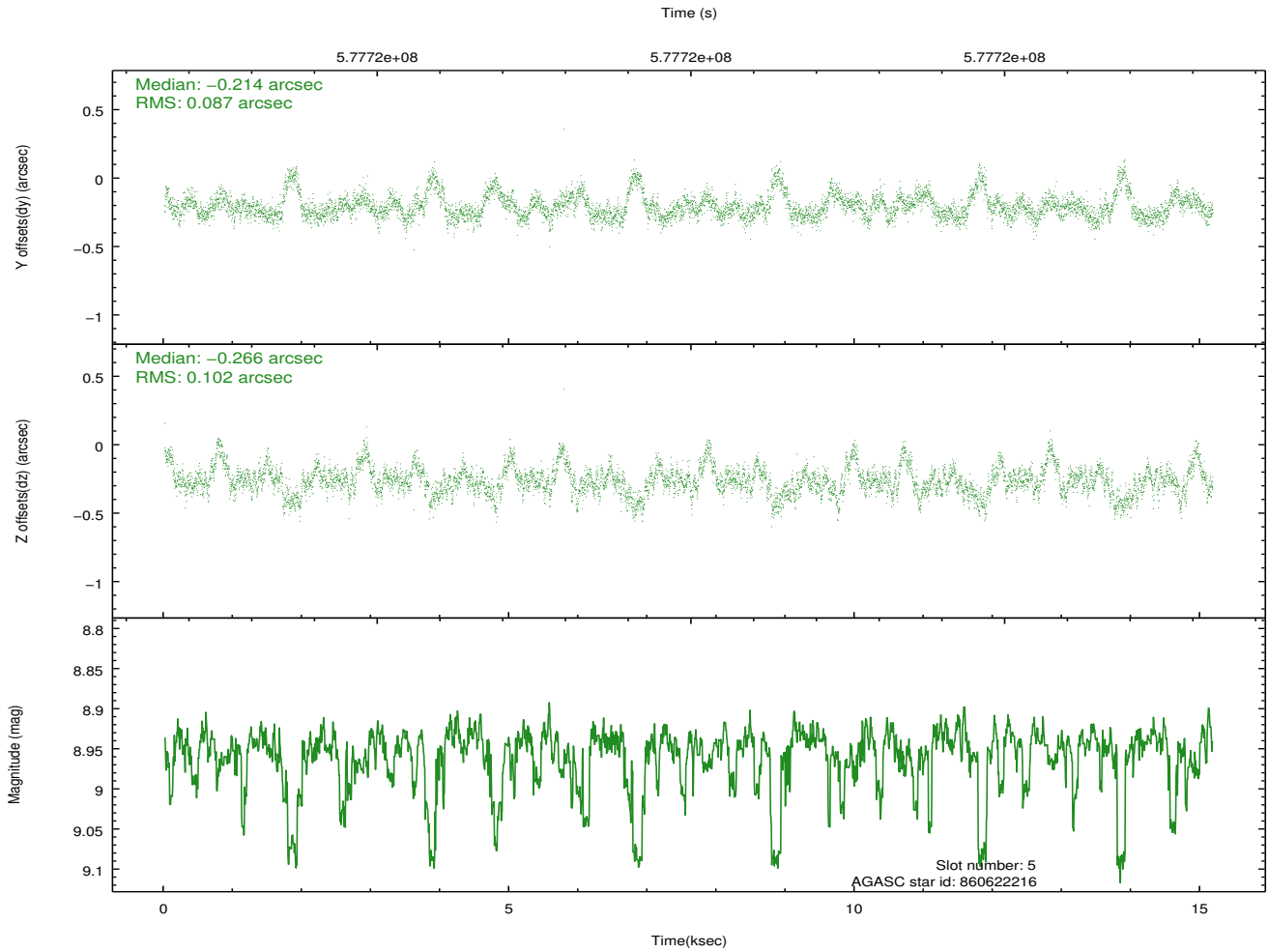
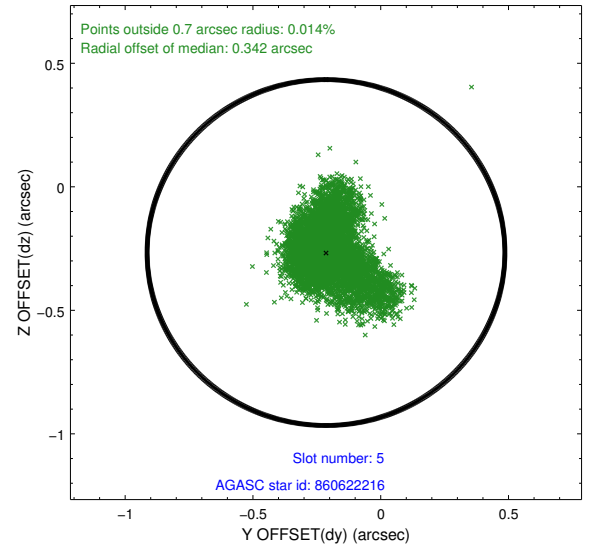
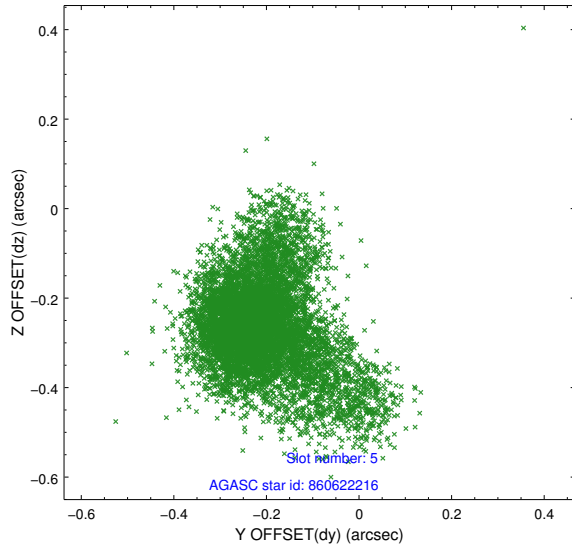
2.4.1 Slot 3



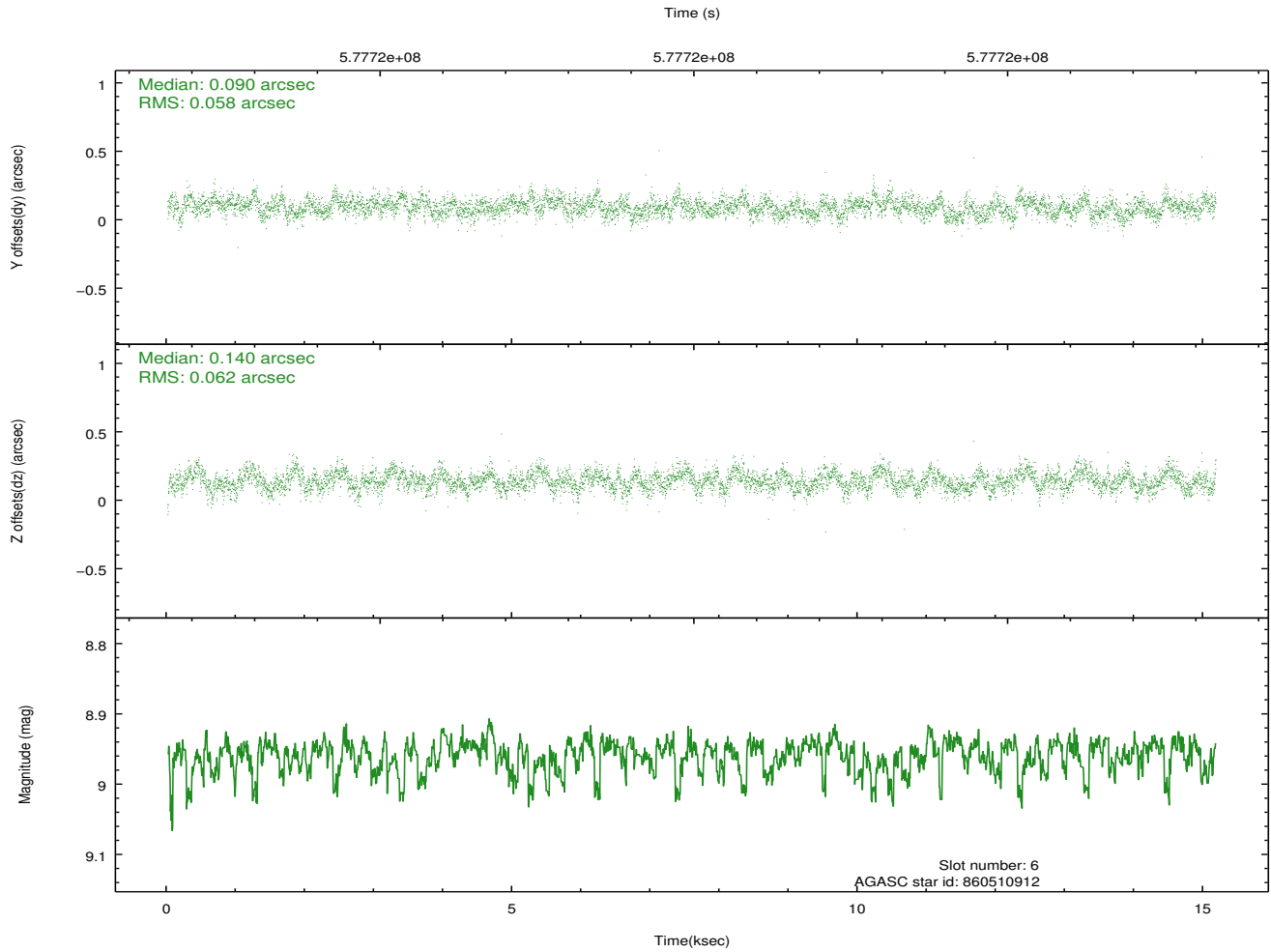
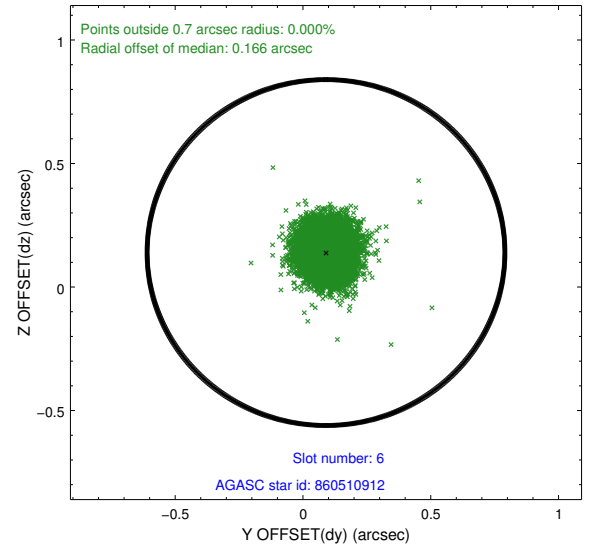
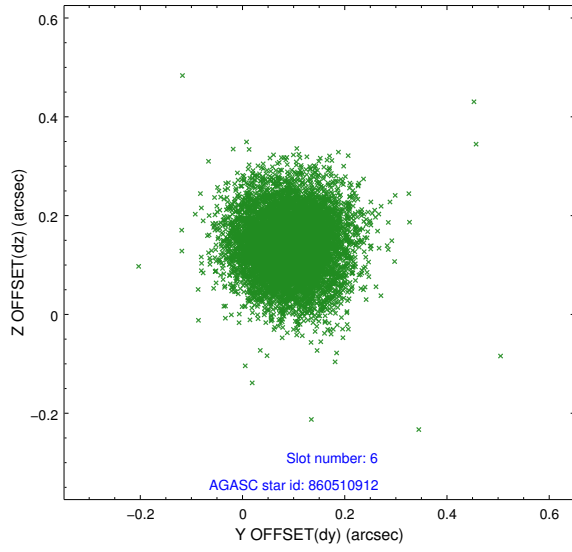
2.4.2 Slot 4



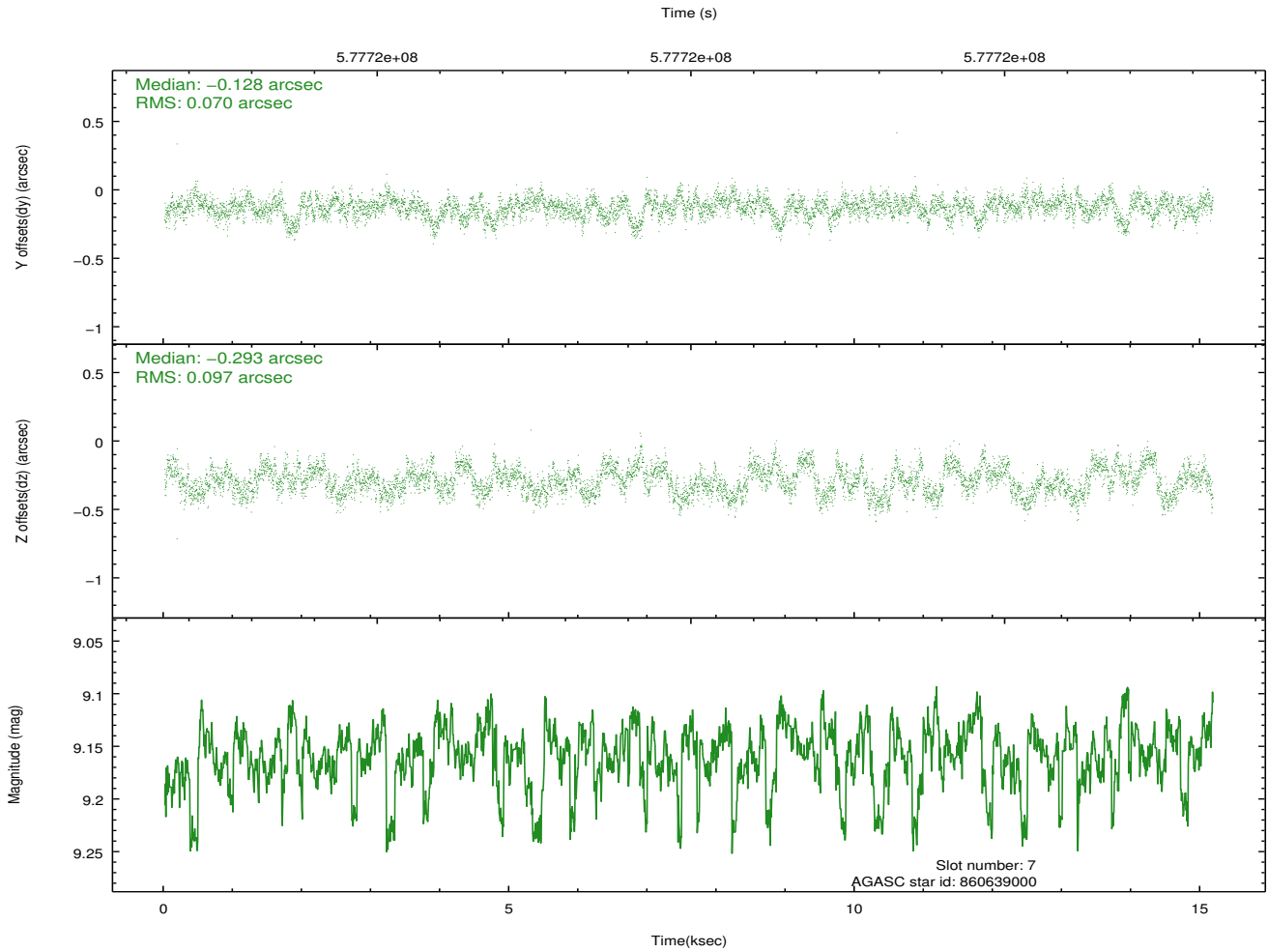
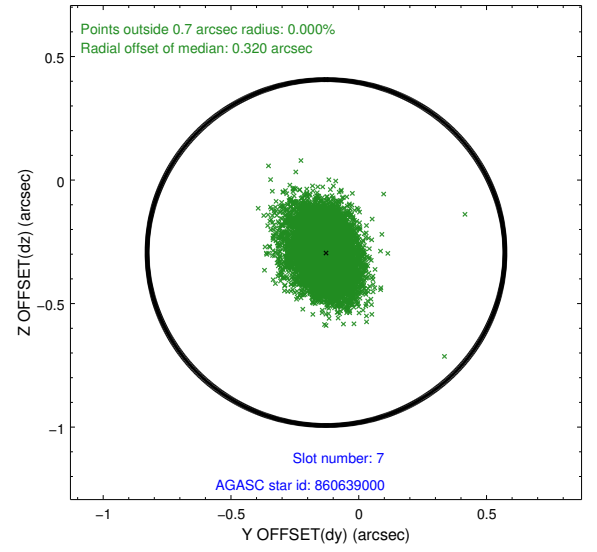
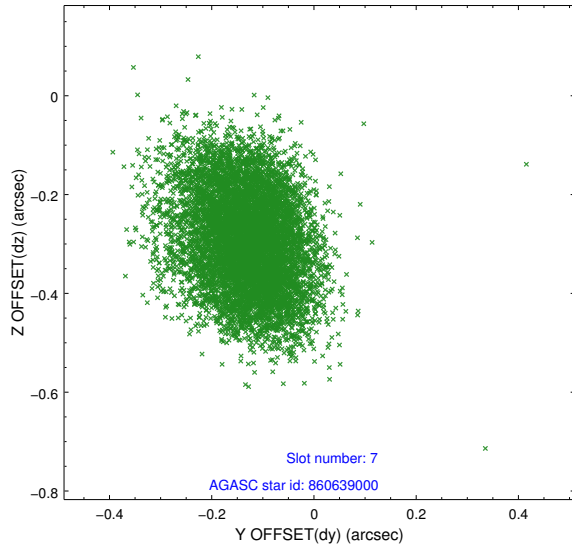
2.4.3 Slot 5



2.4.4 Slot 6

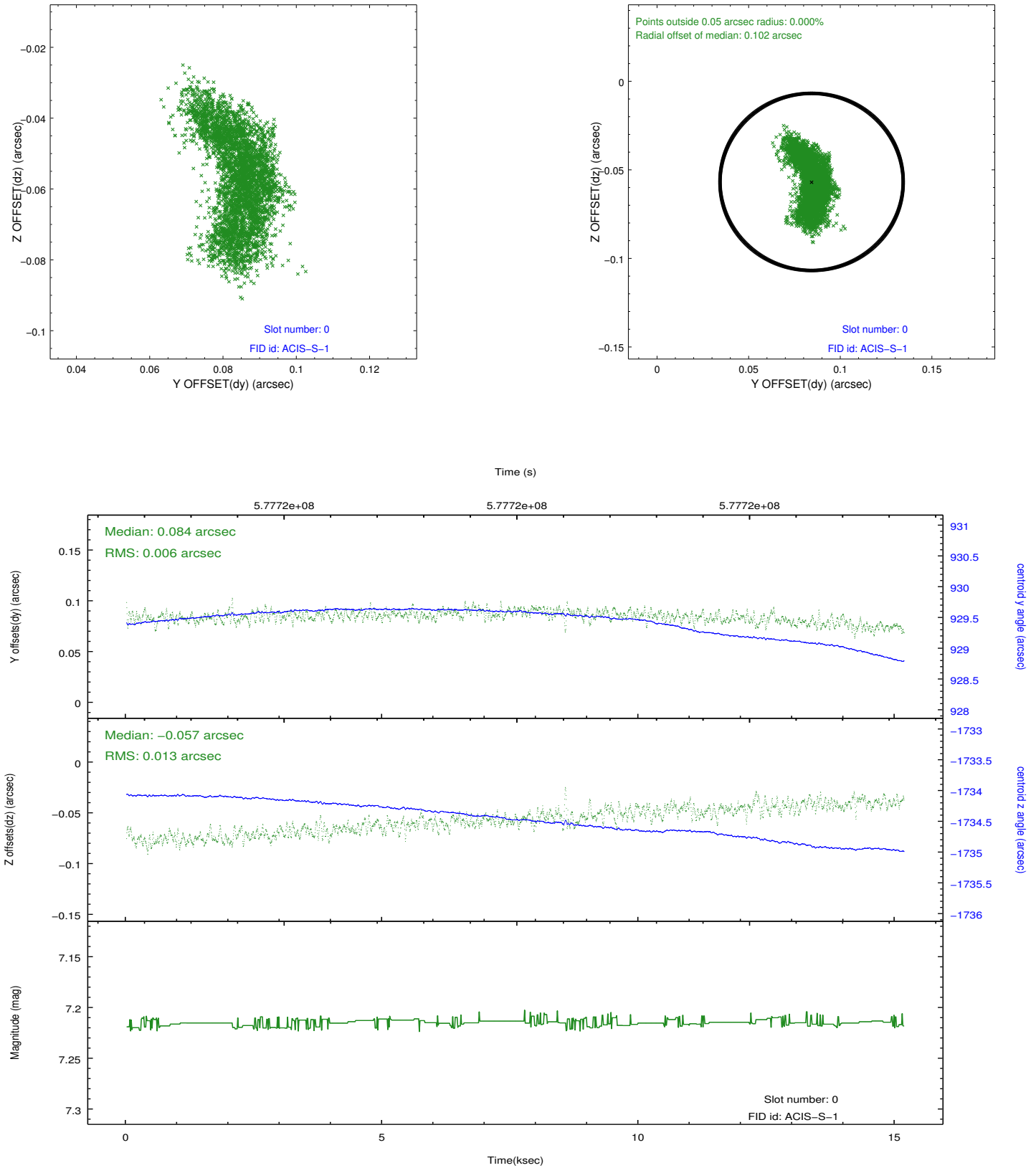


2.4.5 Slot 7

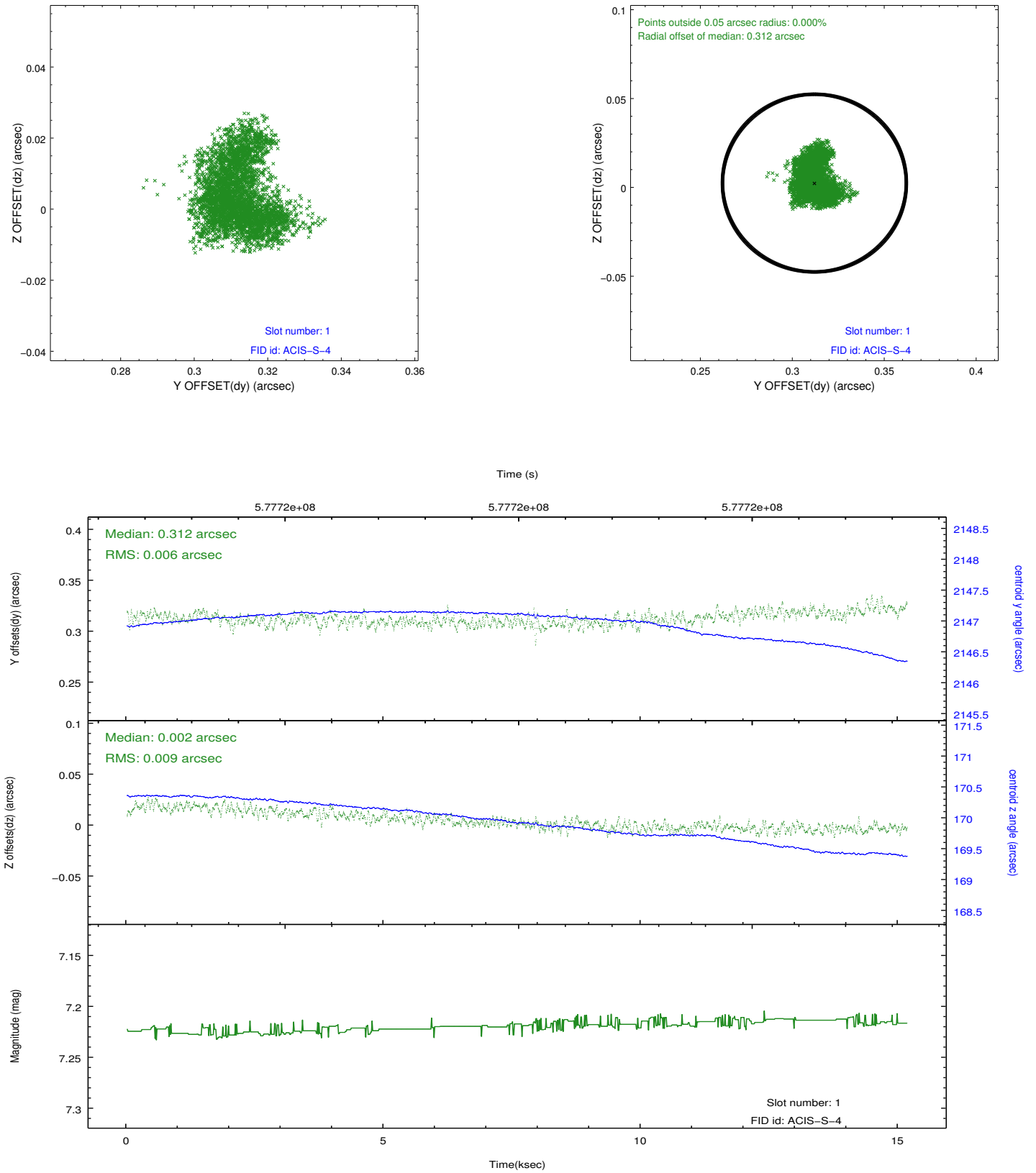


2.5 FID Slots

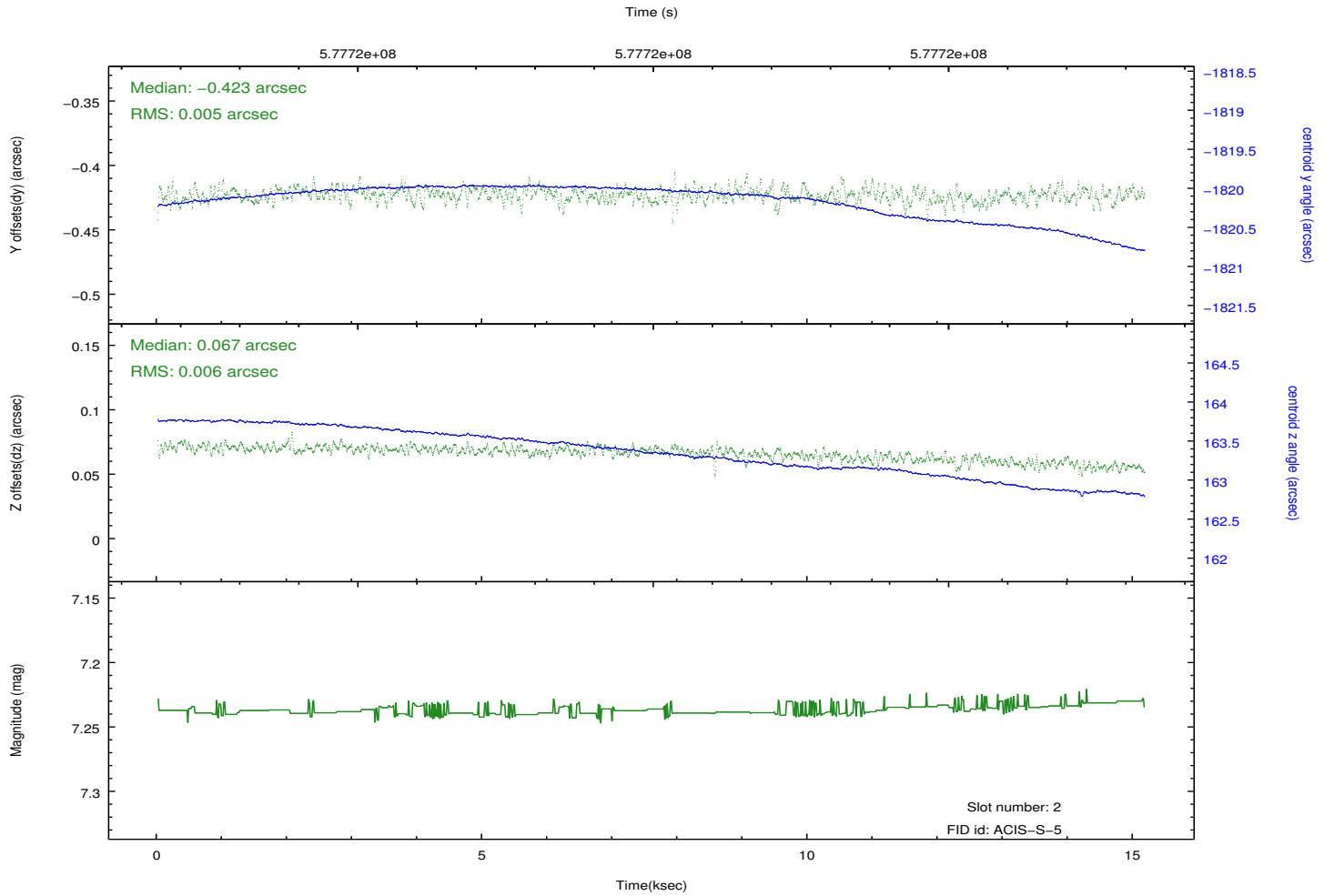
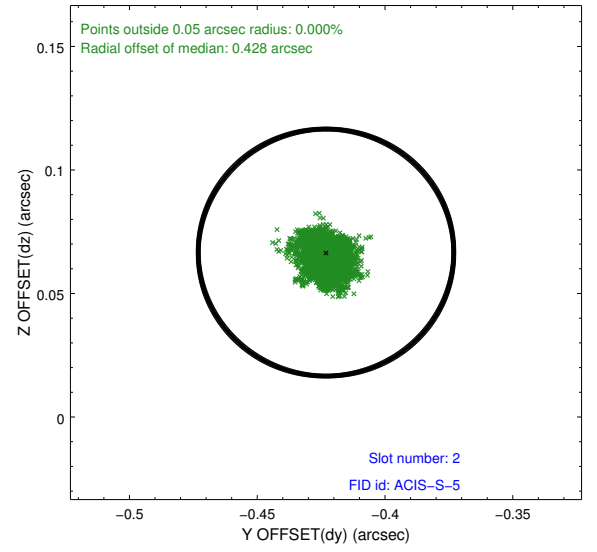
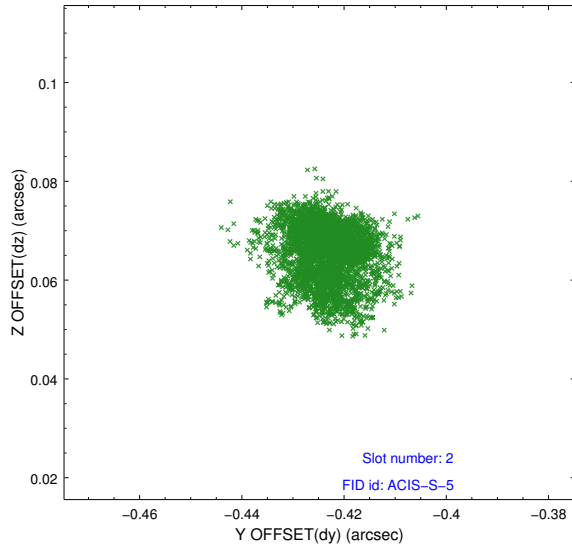
2.5.1 Slot 0



2.5.2 Slot 1



2.5.3 Slot 2



A Summary

A.1 Status

V&V Scientist	Glenn Allen
V&V Date (YYYY-MM-DD)	2016.04.25
V&V Edition	1
V&V Disposition and Status	OK
V&V Charge Time	15.071

A.2 Comments

The location of the source was tweaked to be (RA_TARG,DEC_TARG) = (118.92697,-29.56490) because a comparison of the location of the source in this continuous-clocking mode observation with the location of the source in the continuous-clocking mode observation 18014 of the same source indicates that the coordinates (118.92697,-29.56490) are more accurate (i.e. to within about a pixel) than the coordinates used for obs_id 18014.