

V&V Reference Report

L2 ASCDS Version : 10.4.3.1

Observation 18806 - L2 Version 1
Chandra X-Ray Center

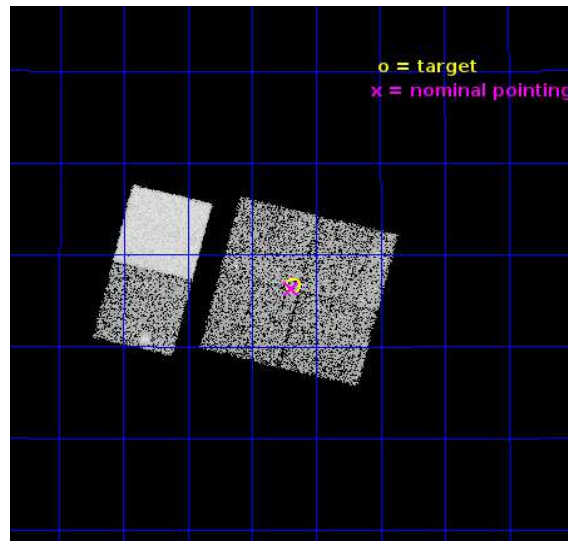
L2 Processing Date : Apr 1 2016

Contents

1	Front	2
2	OBI	3
2.1	OBI	3
2.1.1	Images	3
2.1.2	Bias	3
2.1.3	Parameters	4
2.1.4	Events	4
2.2	Compared Parameters	5
2.3	Aspect	6
2.4	Star Slots	9
2.4.1	Slot 3	9
2.4.2	Slot 4	10
2.4.3	Slot 5	11
2.4.4	Slot 6	12
2.4.5	Slot 7	13
2.5	FID Slots	14
2.5.1	Slot 0	14
2.5.2	Slot 1	15
2.5.3	Slot 2	16
A	Summary	17
A.1	Status	17
A.2	Comments	17

1 Front

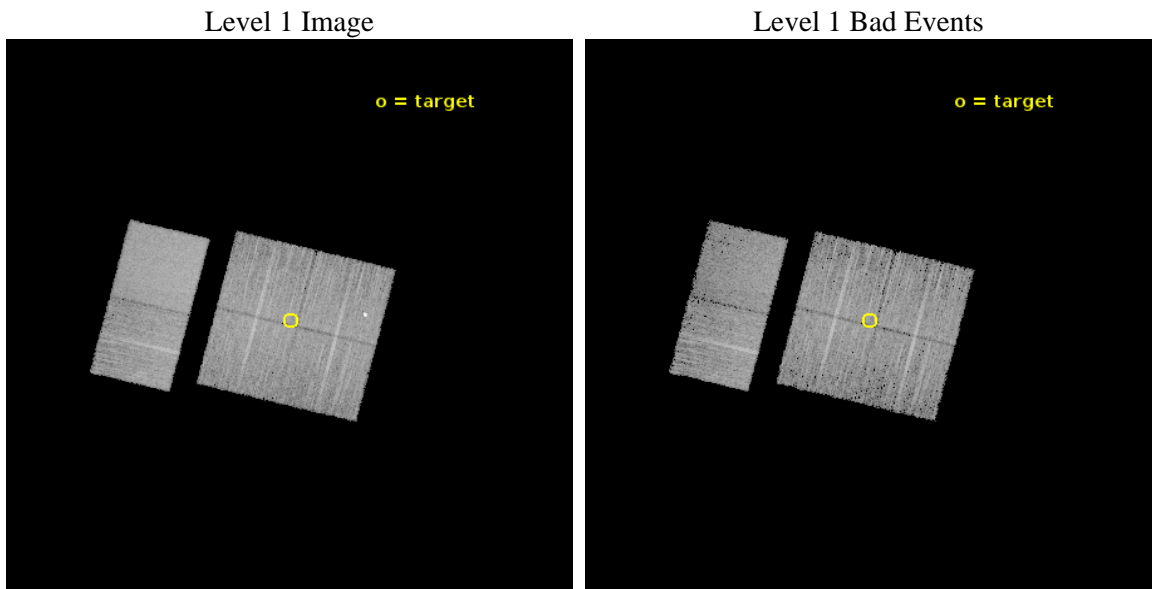
seq_num	401796	Sequence number
obs_id	18806	Observation id
title	X-ray Observations of New Gamma-Ray Bright Galactic Compact Binaries	
observer	Jay Strader	Principal investigator
object	3FGL J0402.7+2616	Source name
dtcycle	0	
cycle	P	events from which exps? Prim/Second/Both
ra_targ	60.668708	Observer's specified target RA [deg]
dec_targ	26.277833	Observer's specified target Dec [deg]
ra_nom	60.673446583251	Nominal RA [deg]
dec_nom	26.271930282713	Nominal Dec [deg]
roll_nom	284.20657035746	Nominal Roll [deg]
revision	1	Processing version of data
ontime	9955.1592675447	Sum of GTIs [s]
livetime	9829.1010466218	Livetime [s]
ontime0	9958.4001483917	Sum of GTIs [s]
ontime1	9955.1592874527	Sum of GTIs [s]
ontime2	9958.4001483917	Sum of GTIs [s]
ontime3	9955.1592675447	Sum of GTIs [s]
ontime6	9958.4001483917	Sum of GTIs [s]
ontime7	9958.4001483917	Sum of GTIs [s]
l2events	63094	Number of level 2 events



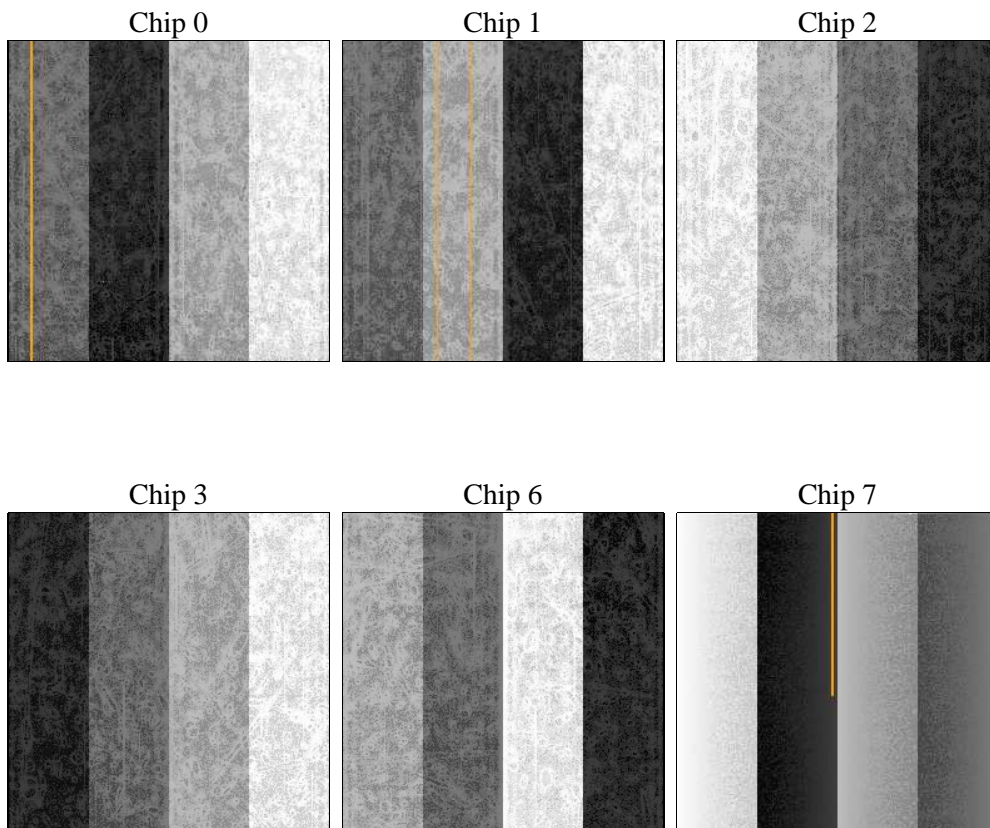
2 OBI

2.1 OBI

2.1.1 Images



2.1.2 Bias



2.1.3 Parameters

obi_num	2	Obi number	sched_exp_time	10000.000000	[s] Scheduled observation exposure time
ascdsver	10.4.3.1	Processing system revision	ontime	9955.1592675447	Sum of GTIs [s]
caldsver	4.7.1	 	ontime0	9958.4001483917	Sum of GTIs [s]
date	2016-04-01T07:15:37	Date and time of file creation	ontime1	9955.1592874527	Sum of GTIs [s]
revision	1	Processing version of data	ontime2	9958.4001483917	Sum of GTIs [s]
			ontime3	9955.1592675447	Sum of GTIs [s]
			ontime6	9958.4001483917	Sum of GTIs [s]
			ontime7	9958.4001483917	Sum of GTIs [s]
			l1events	374522	Number of level 1 events

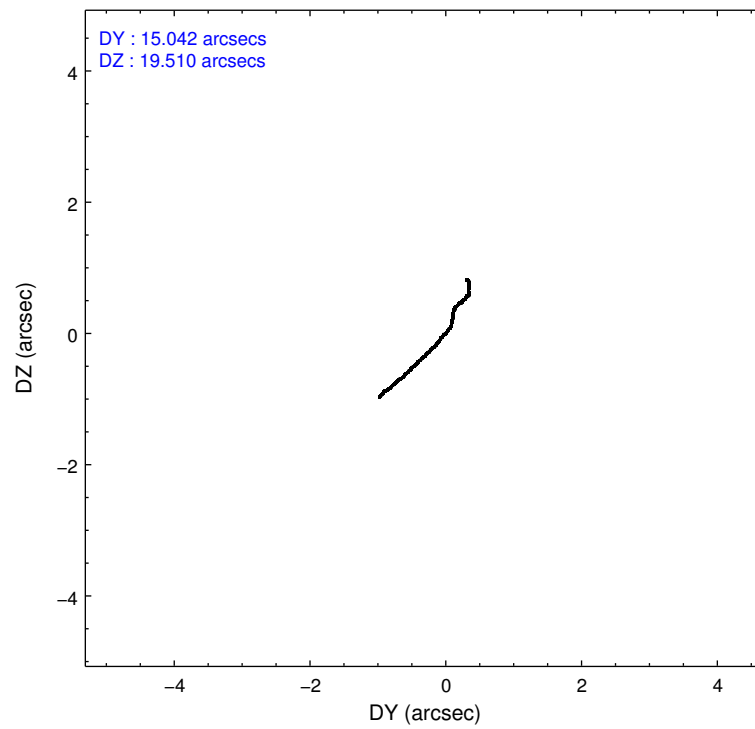
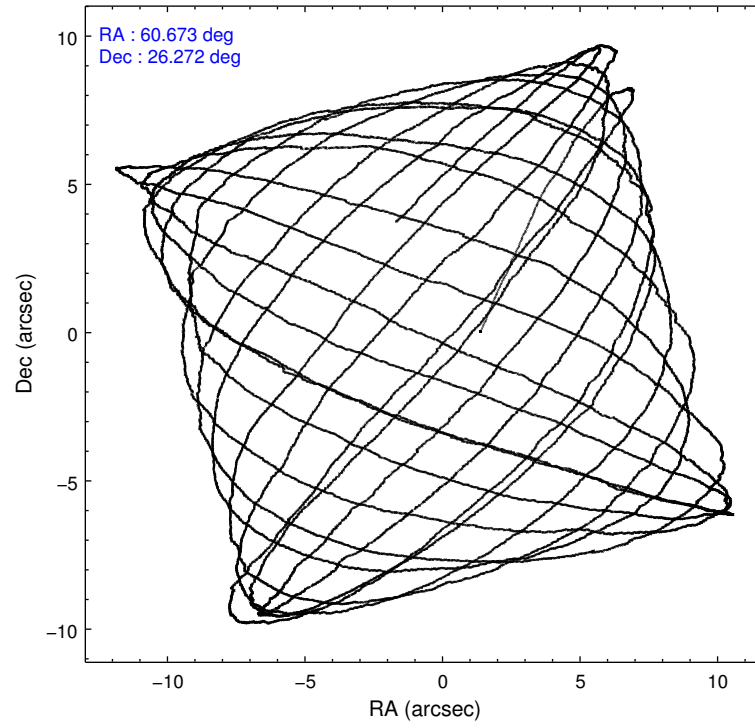
2.1.4 Events

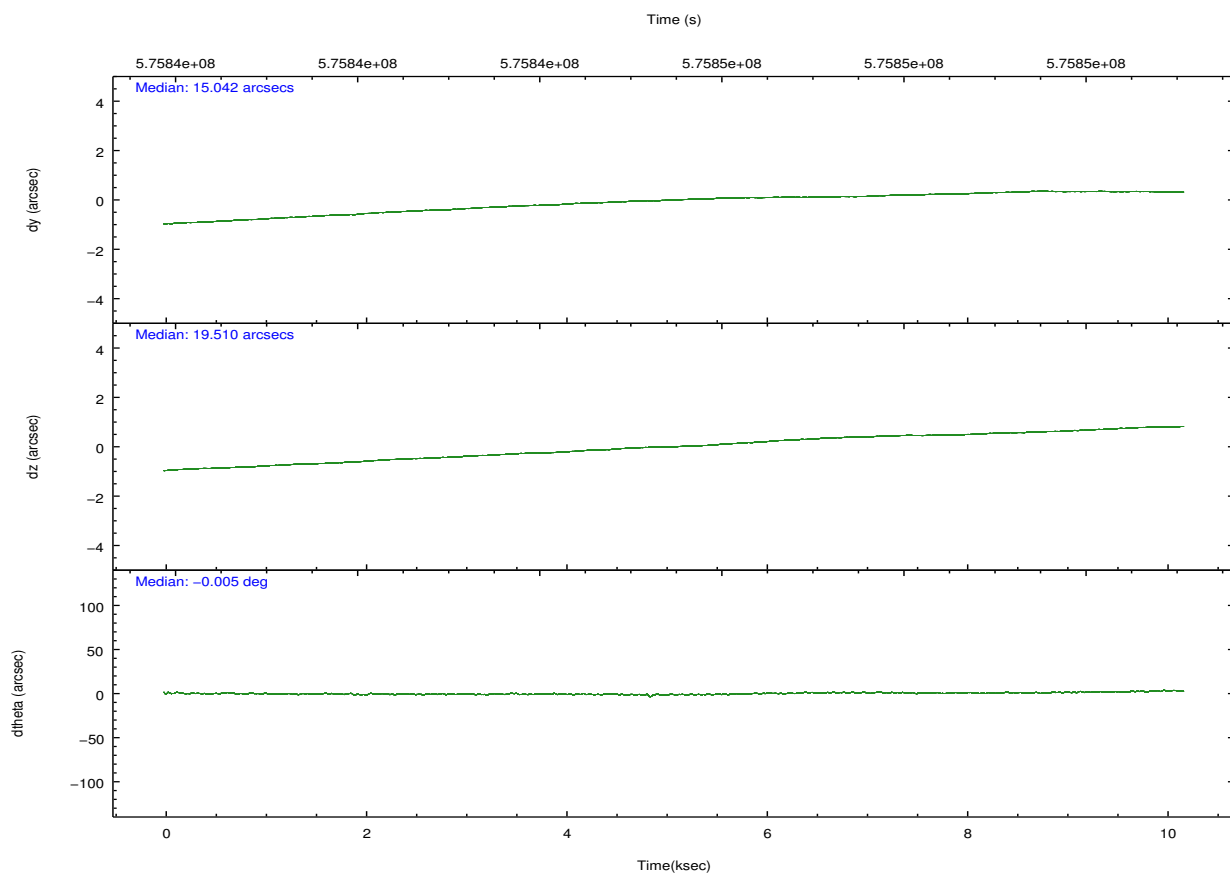
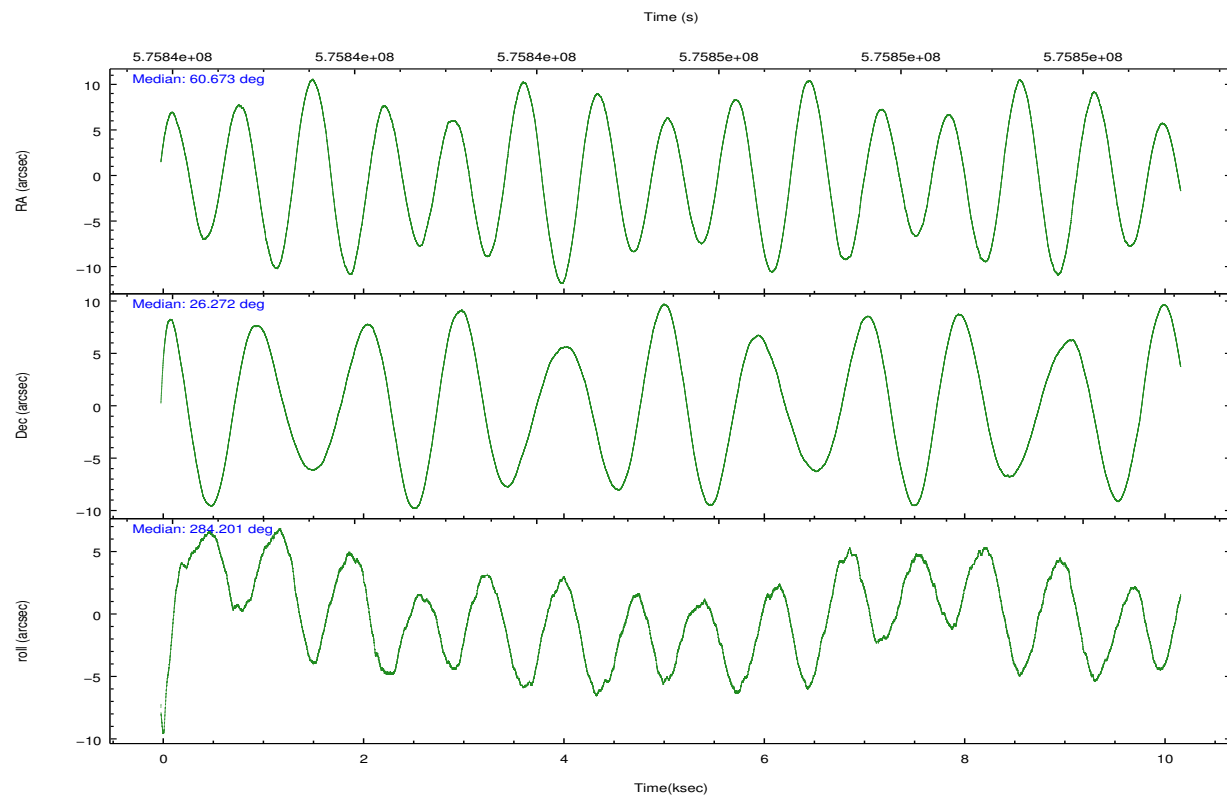
	ccd 0	ccd 1	ccd 2	ccd 3	ccd 6	ccd 7		ccd 0	ccd 1	ccd 2	ccd 3	ccd 6	ccd 7
level 1 events	53546	62783	58881	59449	61079	78784	grade 0 events	2395	5026	2403	2454	2421	2981
rejected events	46684	52816	52175	52904	53858	44349		4%	8%	4%	4%	3%	3%
rejected %	87%	84%	88%	88%	88%	56%	grade 1 events	37	25	41	41	31	111
								0%	0%	0%	0%	0%	0%
							grade 2 events	1732	1933	1650	1436	1716	7305
								3%	3%	2%	2%	2%	9%
							grade 3 events	742	690	696	674	714	2852
								1%	1%	1%	1%	1%	3%
							grade 4 events	629	678	660	659	704	2775
								1%	1%	1%	1%	1%	3%
							grade 5 events	2540	2838	2392	3031	3162	8310
								4%	4%	4%	5%	5%	10%
							grade 6 events	1365	1643	1298	1323	1666	18535
								2%	2%	2%	2%	2%	23%
							grade 7 events	44106	49950	49741	49831	50665	35915
								82%	79%	84%	83%	82%	45%

2.2 Compared Parameters

Parameter	Planned	Actual	Parameter	Planned	Actual
Instrument	ACIS	ACIS	Obspar format version number	7	7
Detector	ACIS-012367	ACIS-012367	Obspar file type	PREDICTED	ACTUAL
Grating	NONE	NONE	Obspar update status	NONE	UPDATED
Data mode	VFAINT	VFAINT	CCD I0 on	Y	Y
Observation mode	POINTING	POINTING	CCD I1 on	Y	Y
[deg] Pointing RA	60.651863	60.67344658325119	CCD I2 on	Y	Y
[deg] Pointing Dec	26.291617	26.27193028271274	CCD I3 on	Y	Y
[deg] Pointing Roll	284.007459	284.2065703574565	CCD S0 on	N	N
[mm] SIM focus pos	-0.782348	-0.7809083437167272	CCD S1 on	N	N
[mm] SIM defocus	0	0.001439871863259334	CCD S2 on	O2	Y
[mm] SIM translation stage pos	-233.592463	-233.5874344608287	CCD S3 on	O1	Y
[mm] SIM translation stage offset	0	-0.005018542100998502	CCD S4 on	N	N
[s] Observation start time (MET)	575840540.184000	575839260.49694	CCD S5 on	N	N
Observation start date	2016-03-31T19:41:12	2016-03-31T19:21:00	Number of optional ACIS chips dropped	0	0
[s] Observation end time (MET)	575850540.184000	575851633.27265	On-chip summing requested	N	N
Observation end date	2016-03-31T22:27:52	2016-03-31T22:47:13	Subarray requested	NONE	NONE
Read mode	TIMED	TIMED	Alternating exposures requested	N	N
			[s] Primary exposure time	0.000000	3.2

2.3 Aspect



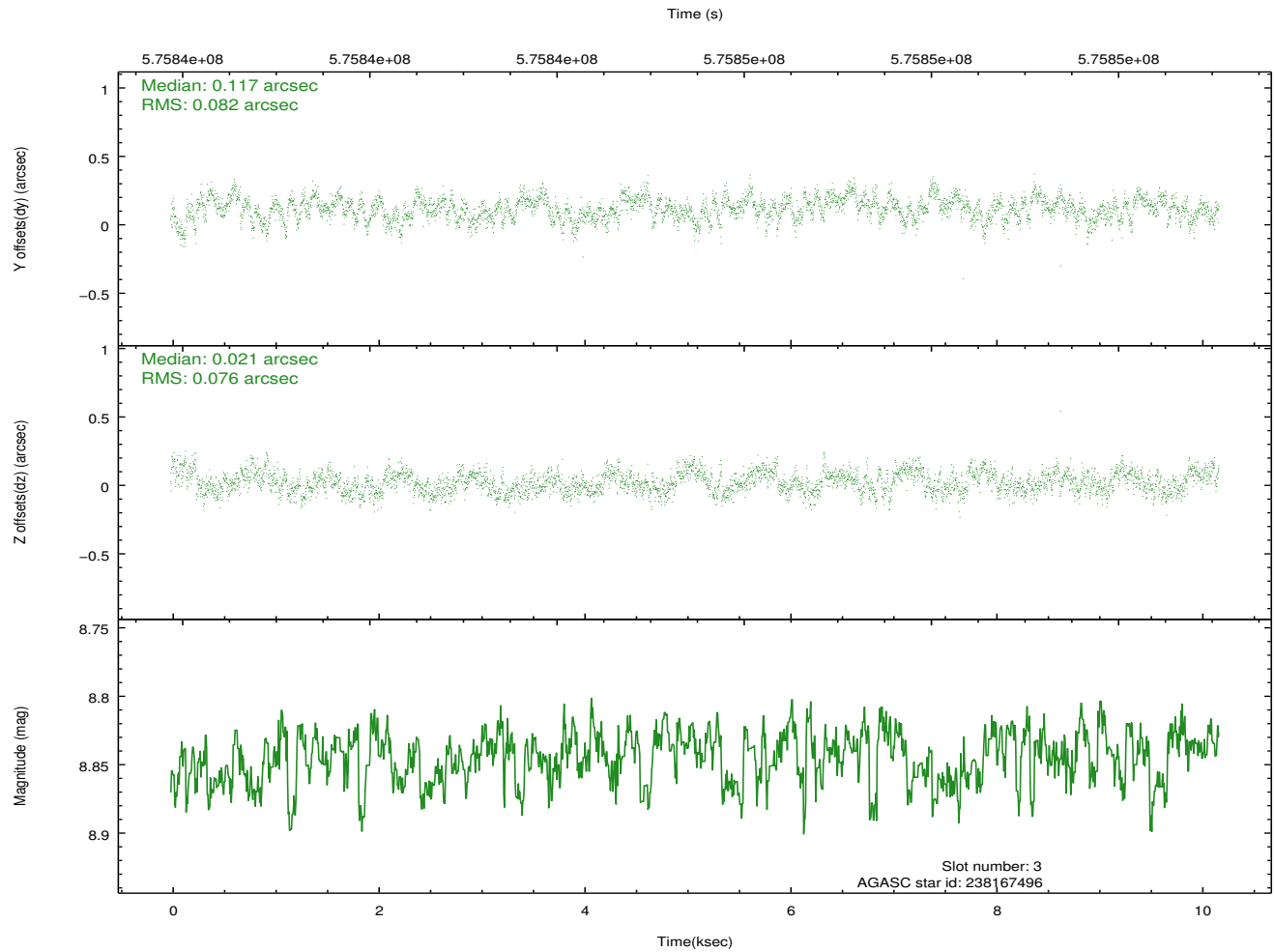
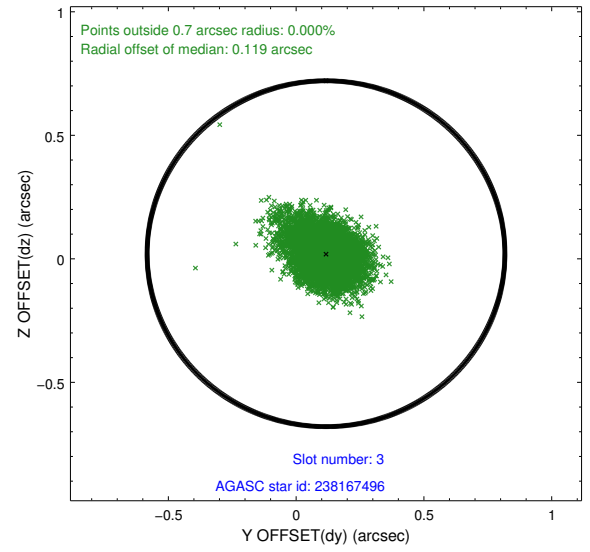
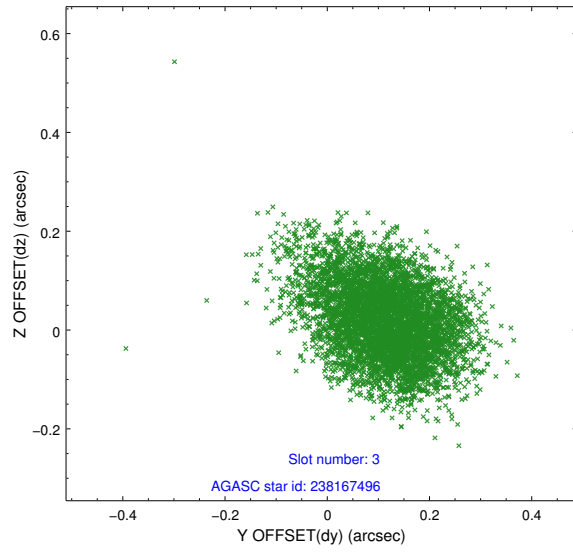


Slot Statistics

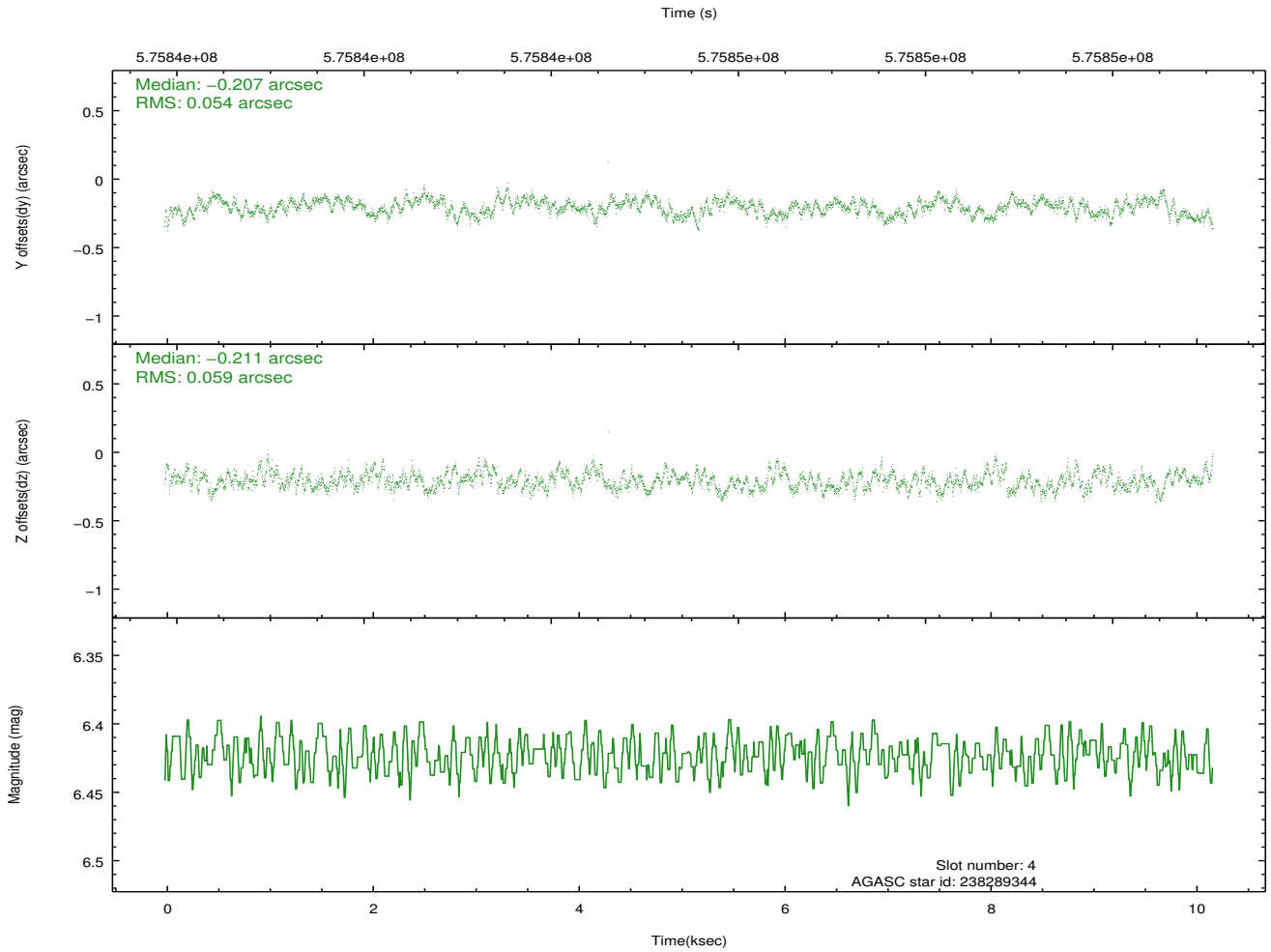
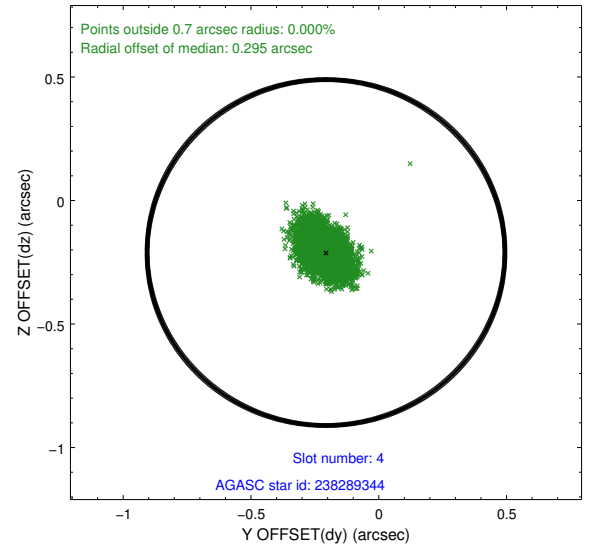
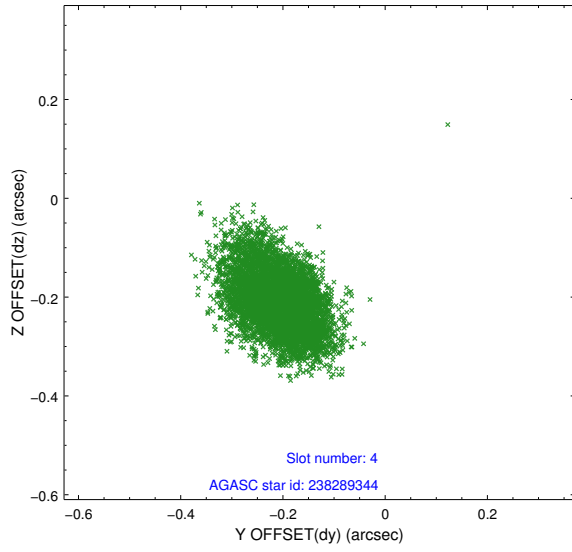
slot	status	used	id	mag	n_pts	med_dy	med_dz	dr1	dr2	ra	dec	mean_y	mean_z
0	FID		ACIS-I-1	7.24	2483	0.074	-0.028	0.018	0.042	0.000000	0.000000	924.65	-843.21
1	FID		ACIS-I-5	7.25	2483	-0.349	0.039	0.009	0.016	0.000000	0.000000	-1823.68	1053.96
2	FID		ACIS-I-6	7.25	2483	0.182	0.063	0.022	0.034	0.000000	0.000000	389.63	1699.18
3	GUIDE	used	238167496	8.84	4961	0.117	0.021	0.118	0.189	60.112263	25.793648	1313.44	-2129.63
4	GUIDE	used	238289344	6.42	4967	-0.207	-0.211	0.084	0.138	61.193787	26.200575	738.40	1619.38
5	GUIDE	used	238683888	8.90	4964	0.186	0.300	0.101	0.167	59.917366	26.387415	-913.62	-2212.65
6	GUIDE	used	238820712	9.17	4959	-0.097	0.120	0.161	0.252	61.059010	26.861252	-1675.36	1765.09
7	GUIDE	used	238293120	8.95	4962	-0.000	-0.230	0.098	0.161	61.497738	25.788215	2414.12	2225.89

2.4 Star Slots

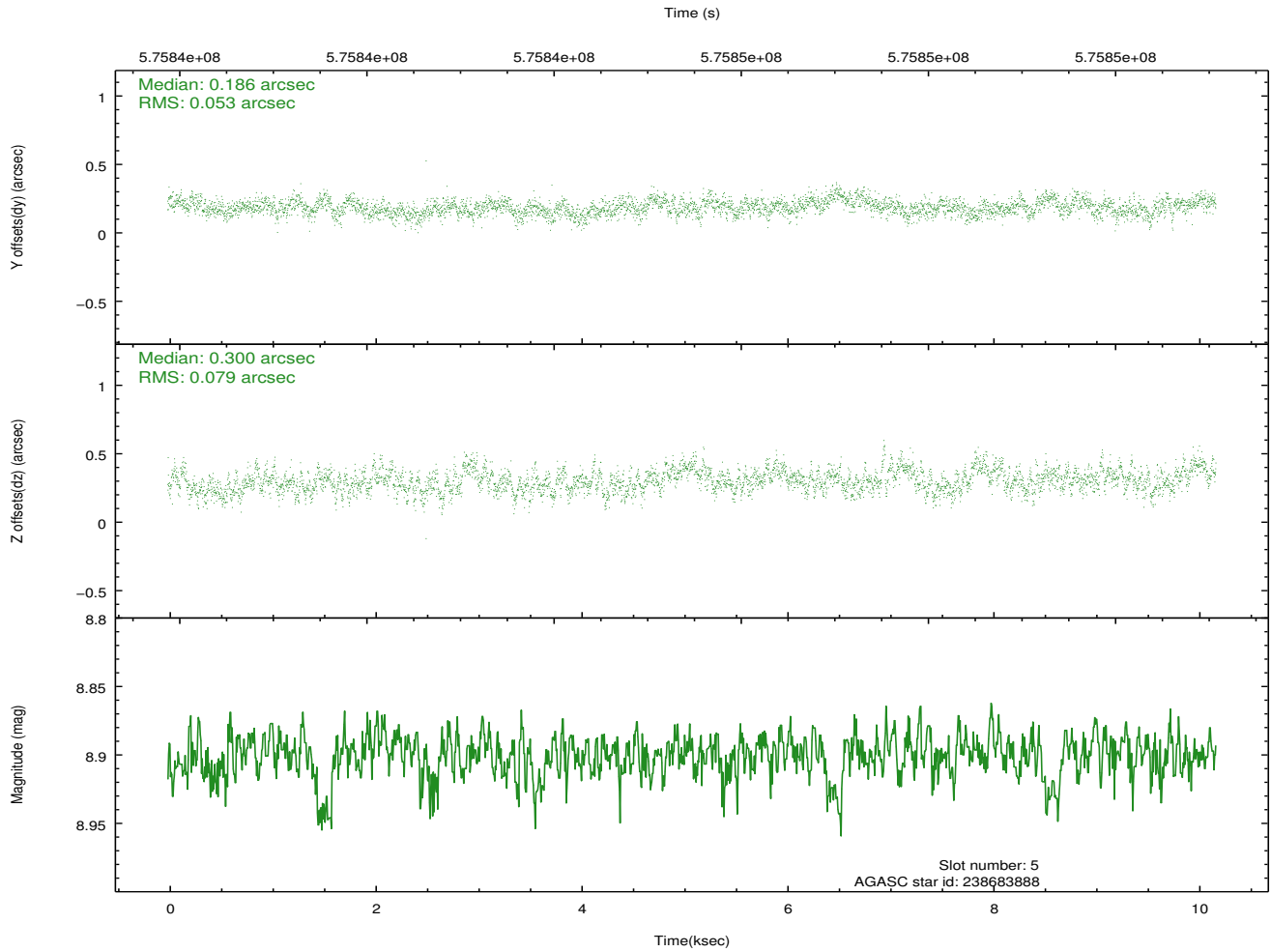
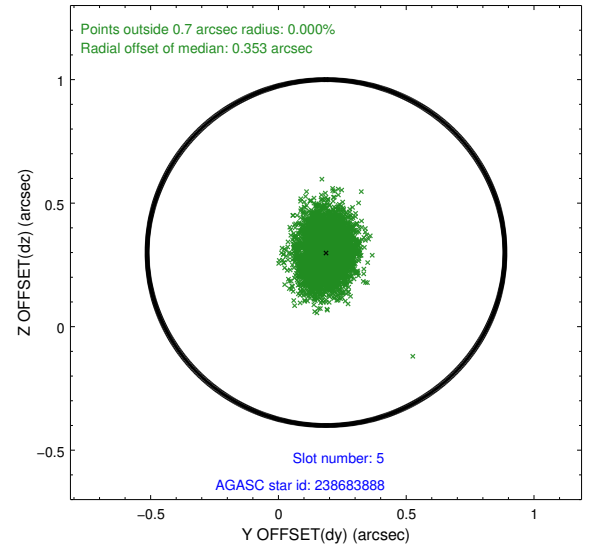
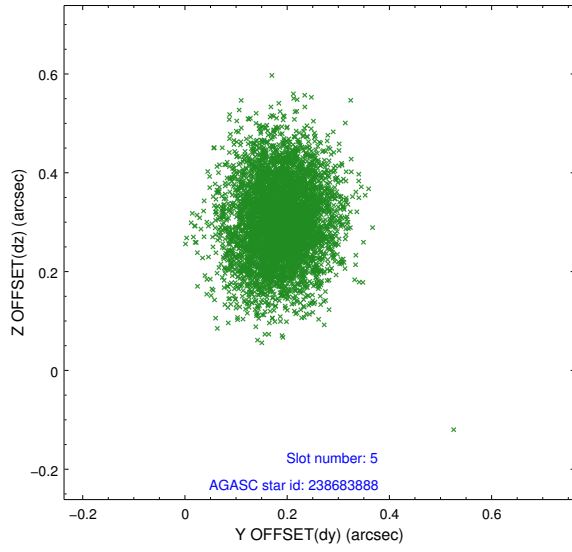
2.4.1 Slot 3



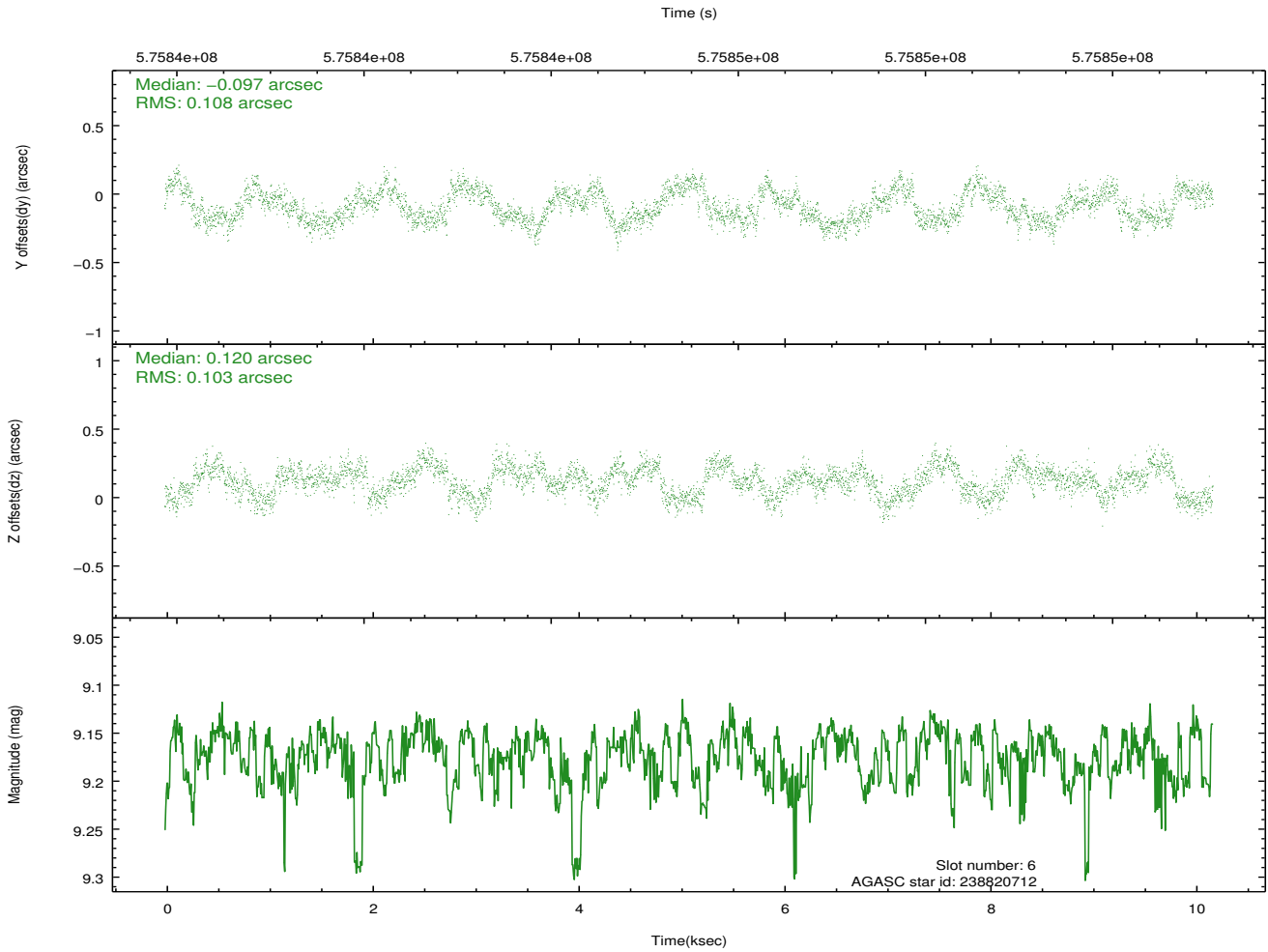
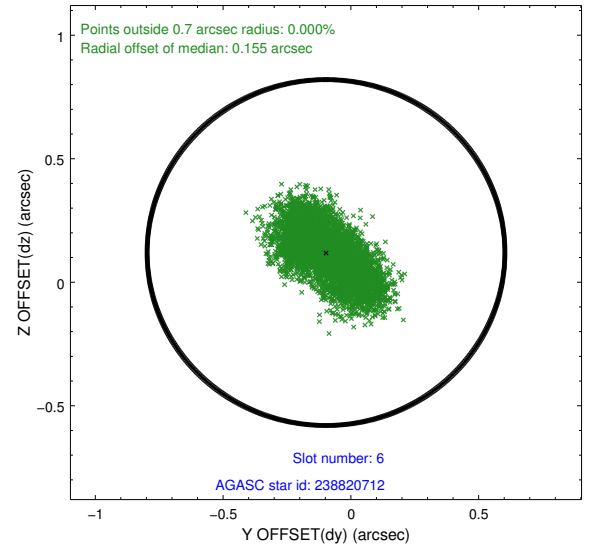
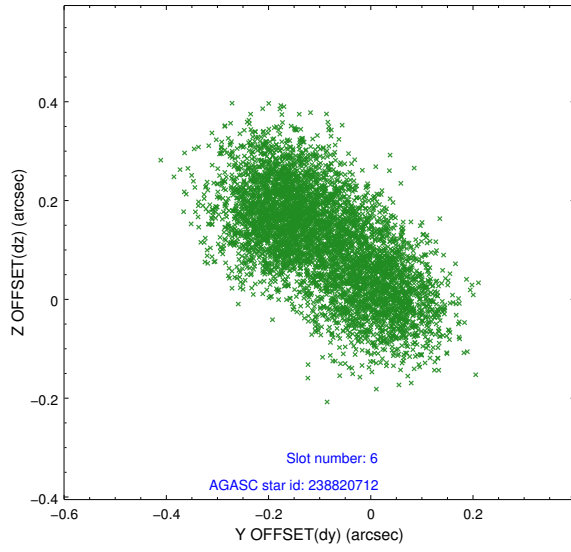
2.4.2 Slot 4



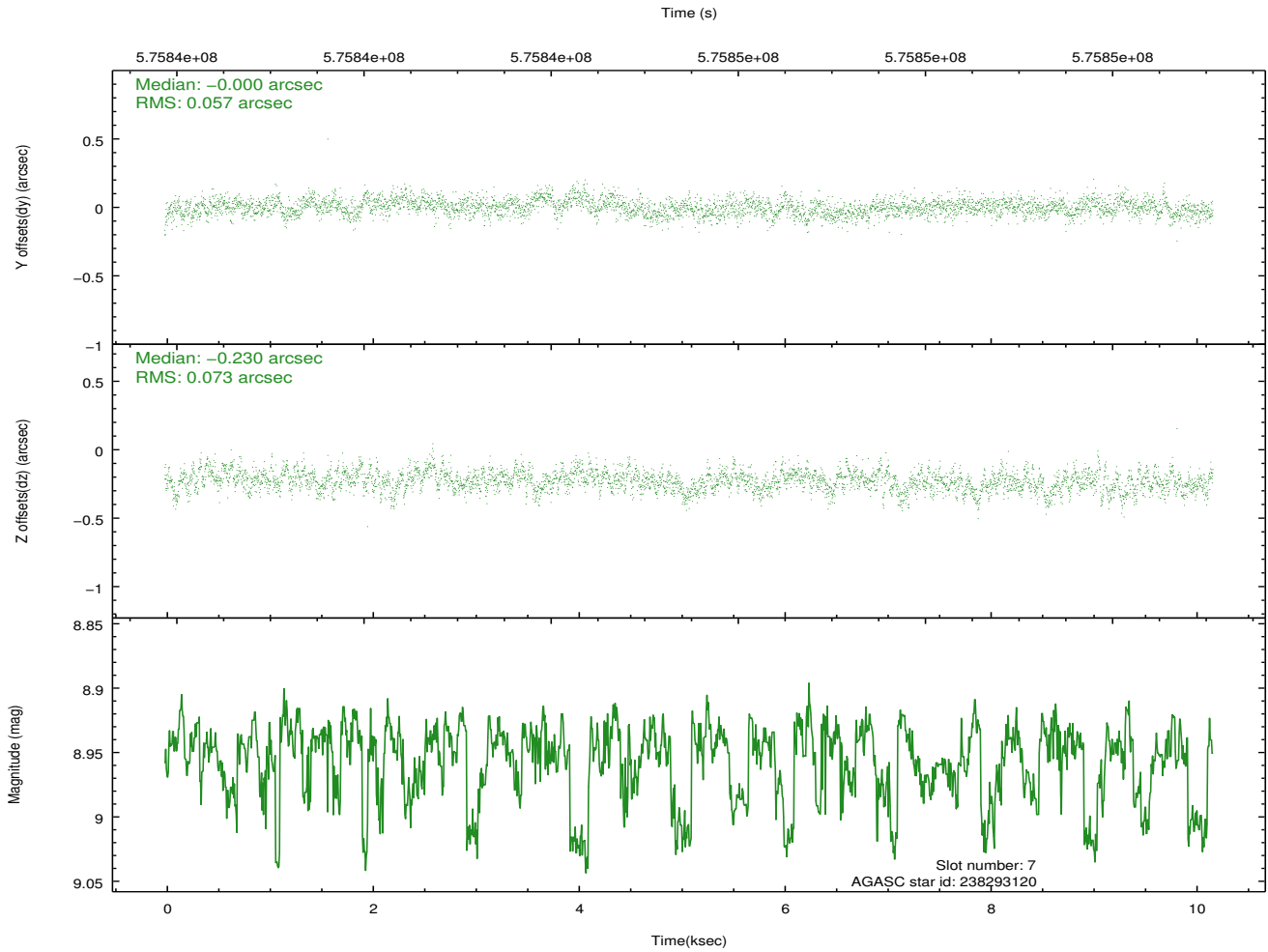
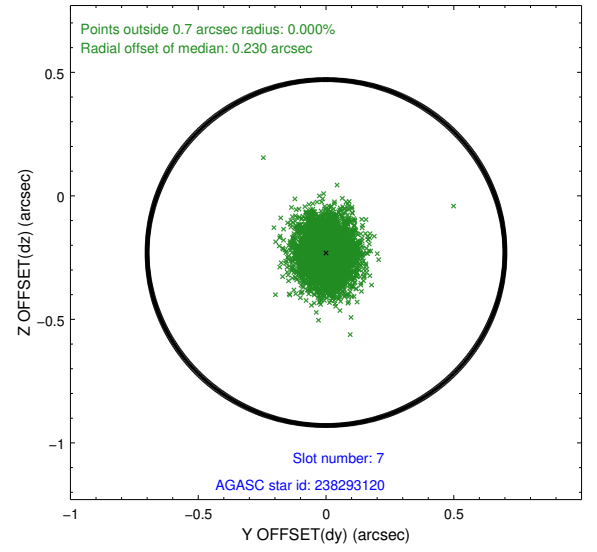
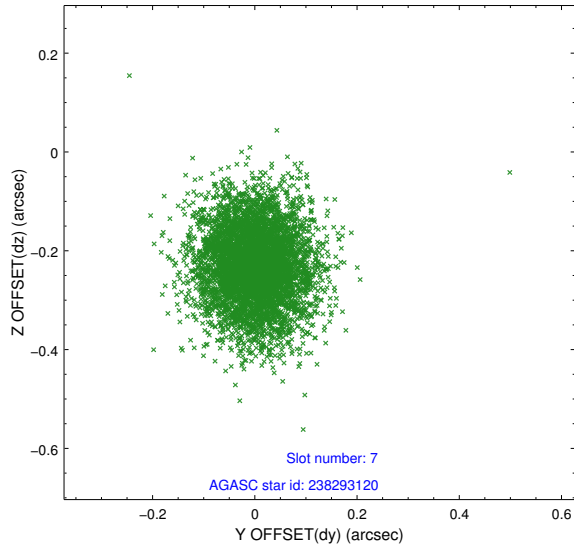
2.4.3 Slot 5



2.4.4 Slot 6

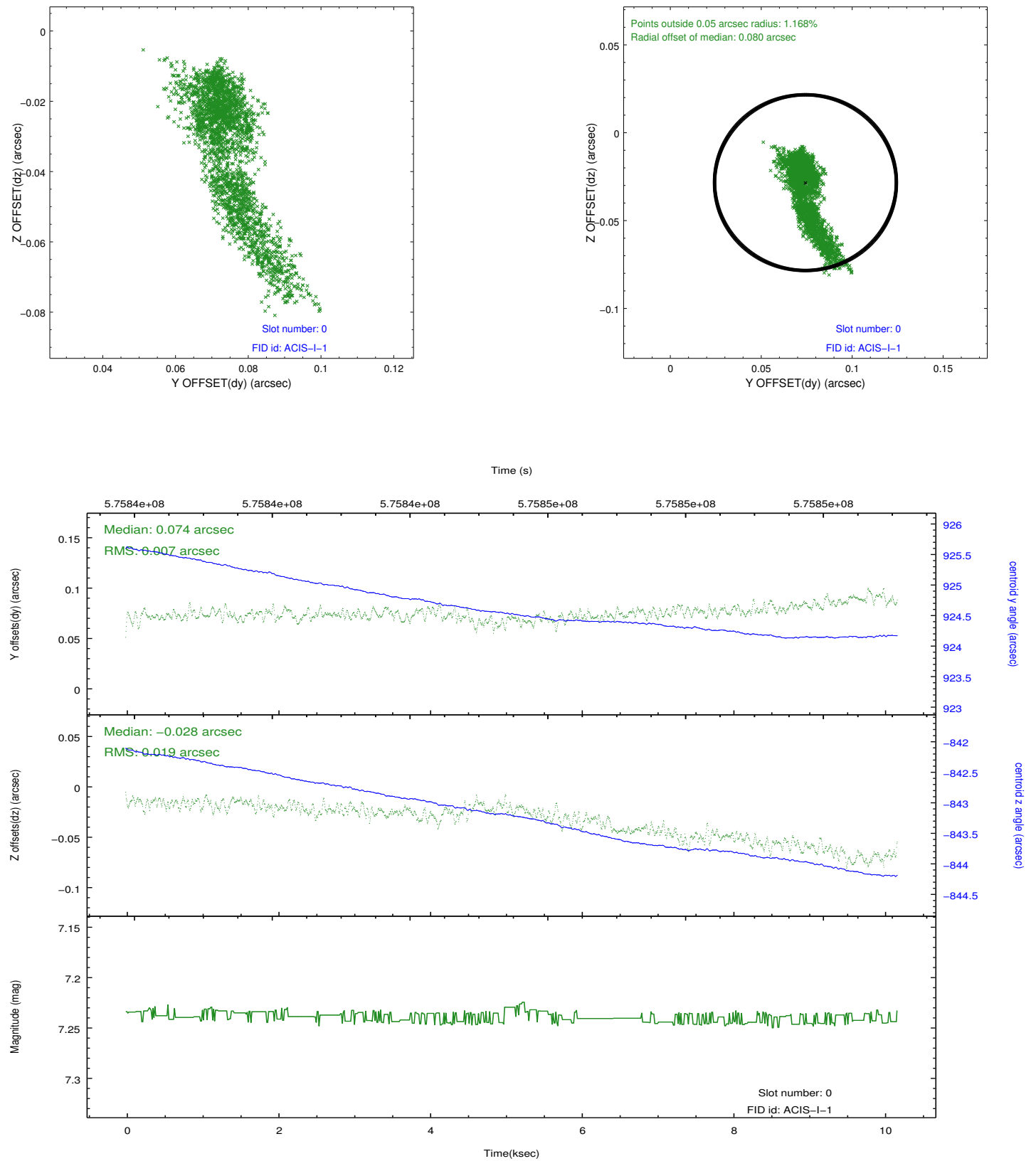


2.4.5 Slot 7

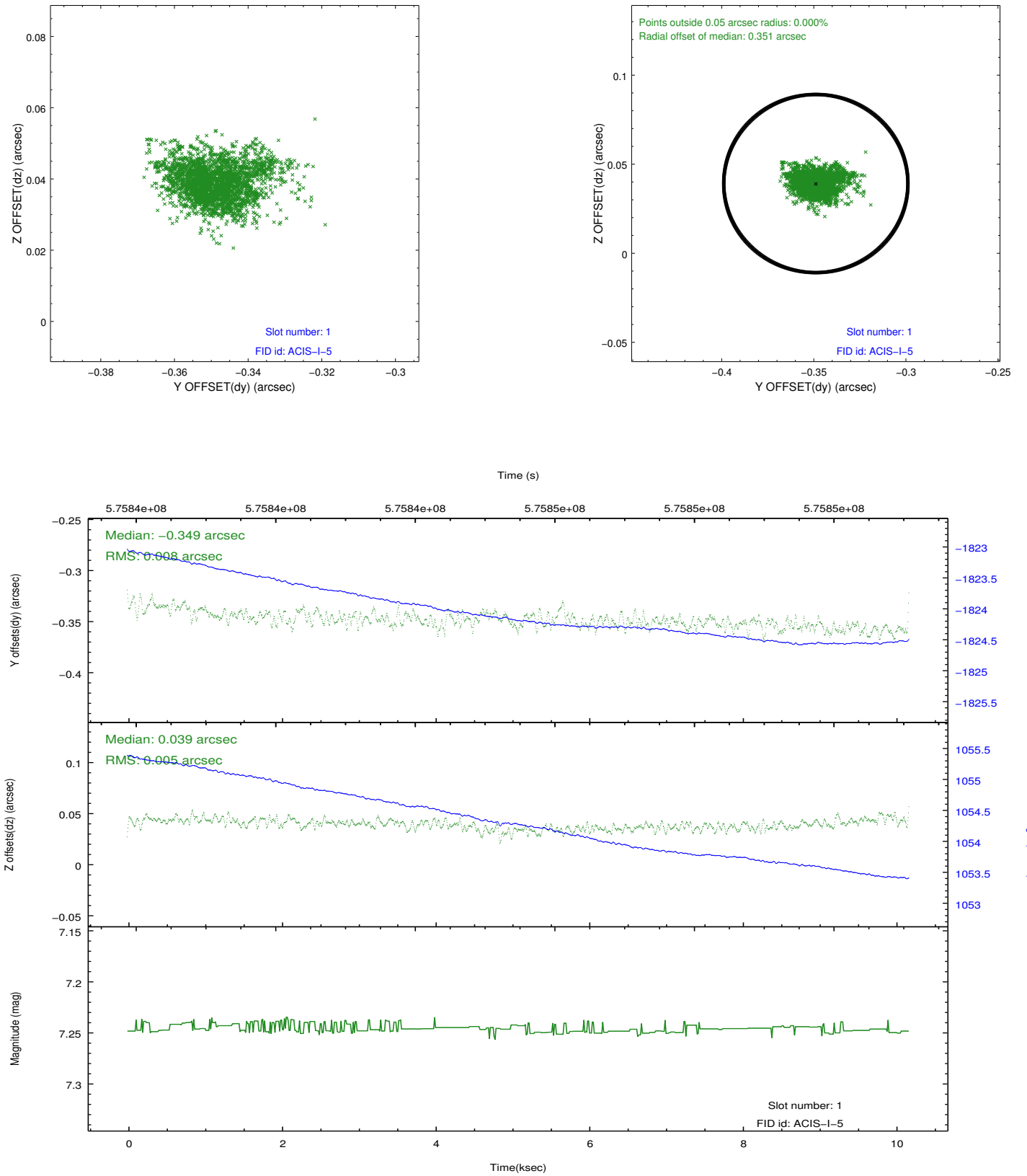


2.5 FID Slots

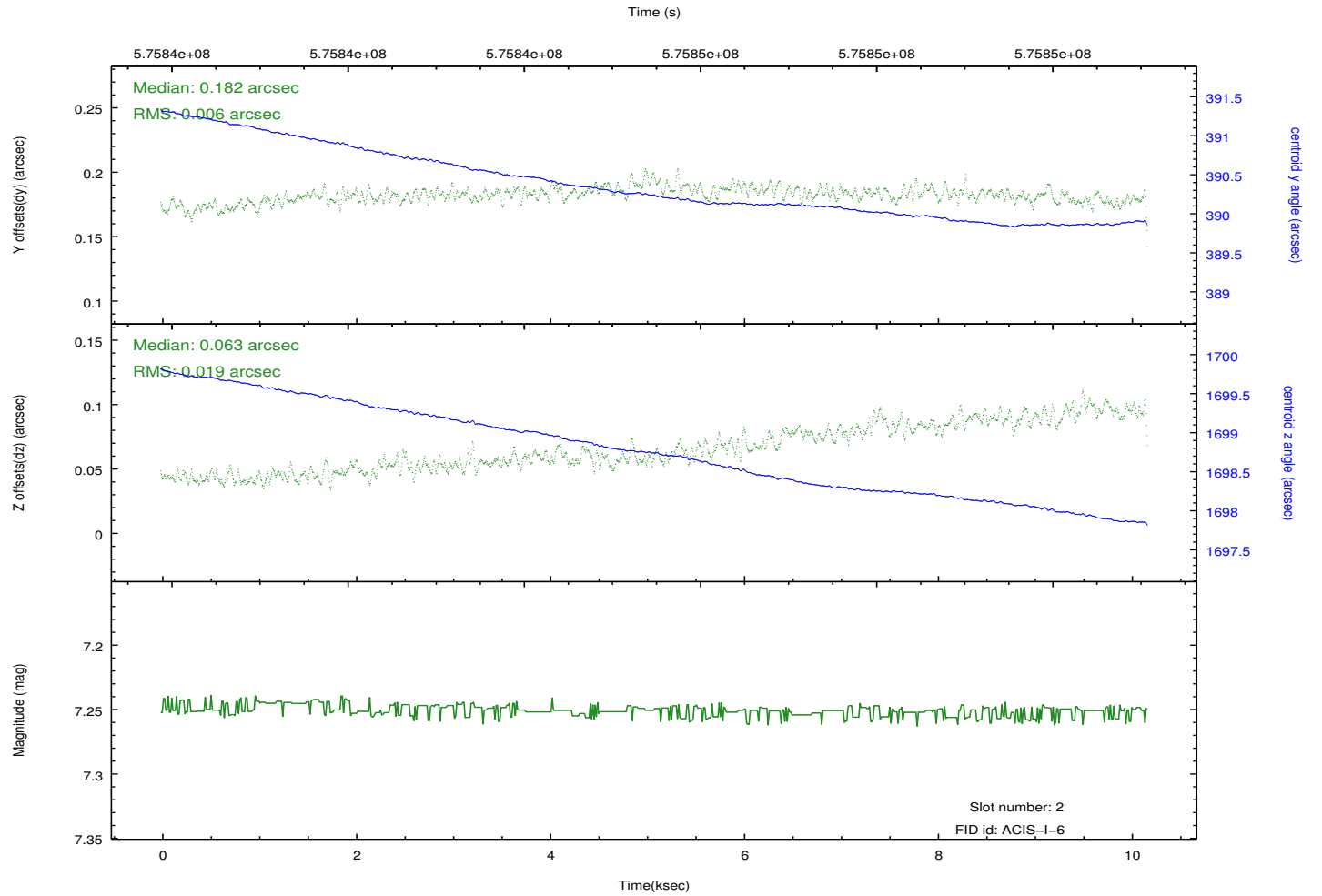
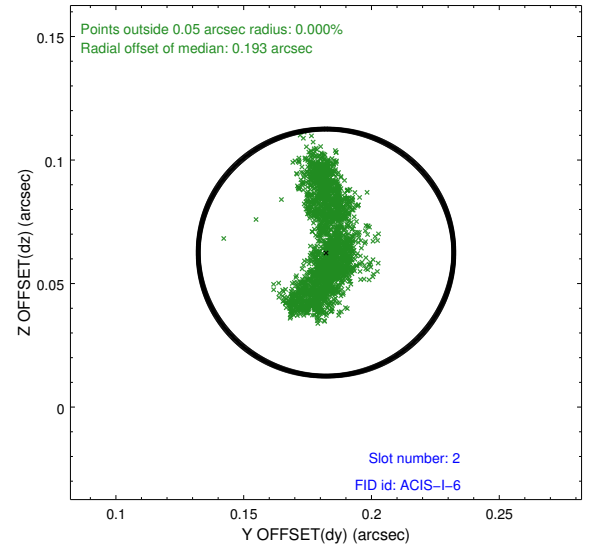
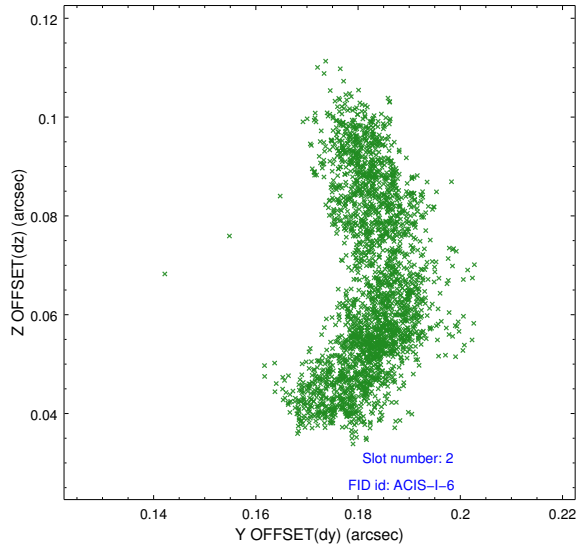
2.5.1 Slot 0



2.5.2 Slot 1



2.5.3 Slot 2



A Summary

A.1 Status

V&V Scientist	Joy Nichols
V&V Date (YYYY-MM-DD)	2016.04.01
V&V Edition	1
V&V Disposition and Status	OK
V&V Charge Time	9.9551592675447

A.2 Comments