

V&V Reference Report

L2 ASCDS Version : 10.4.3.1

Observation 17770 - L2 Version 1
Chandra X-Ray Center

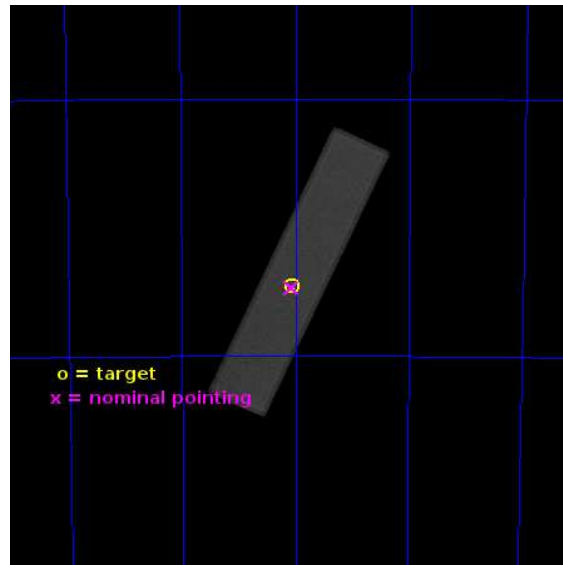
L2 Processing Date : Apr 9 2016

Contents

1	Front	2
2	OBI	3
2.1	OBI	3
2.1.1	Images	3
2.1.2	Parameters	4
2.1.3	Events	4
2.2	Compared Parameters	5
2.3	Aspect	6
2.4	Star Slots	9
2.4.1	Slot 3	9
2.4.2	Slot 4	10
2.4.3	Slot 5	11
2.4.4	Slot 6	12
2.4.5	Slot 7	13
2.5	FID Slots	14
2.5.1	Slot 0	14
2.5.2	Slot 1	15
2.5.3	Slot 2	16
A	Summary	17
A.1	Status	17
A.2	Comments	17

1 Front

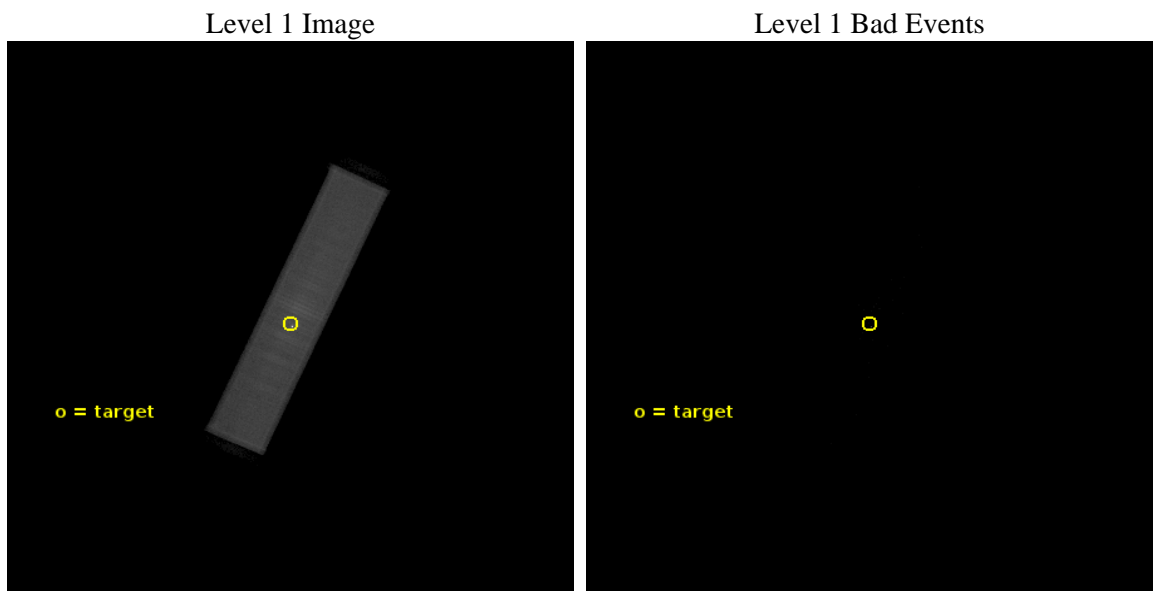
seq_num	401702	Sequence number
obs_id	17770	Observation id
title	Transient LMXBs in Globular Clusters	Proposal title
observer	David Pooley	Principal investigator
object	NGC 2808	Source name
ra_targ	138.012917	Observer's specified target RA [deg]
dec_targ	-64.8635	Observer's specified target Dec [deg]
ra_nom	138.01767843488	Nominal RA [deg]
dec_nom	-64.867961193542	Nominal Dec [deg]
roll_nom	294.53505786891	Nominal Roll [deg]
revision	1	Processing version of data
ontime	14640.332086802	[s]
livetime	14578.135238616	Ontime multiplied by DTCOR
l2events	710406	Number of level 2 events



2 OBI

2.1 OBI

2.1.1 Images



2.1.2 Parameters

obi_num	0	Obi number	sched_exp_time	14500.000000	[s] Scheduled observation exposure time
ascdsver	10.4.3.1	Processing system revision	ontime	14640.332086802	[s]
caldsver	4.7.1	 	l1events	982171	Number of level 1 events
date	2016-04-09T22:16:44	Date and time of file creation			
revision	1	Processing version of data			

2.1.3 Events

Level 1 Events

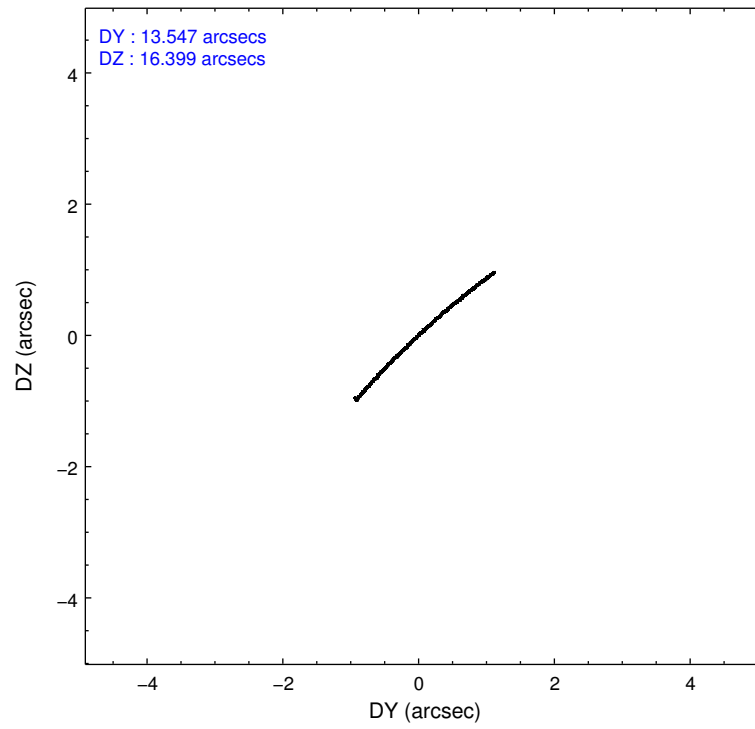
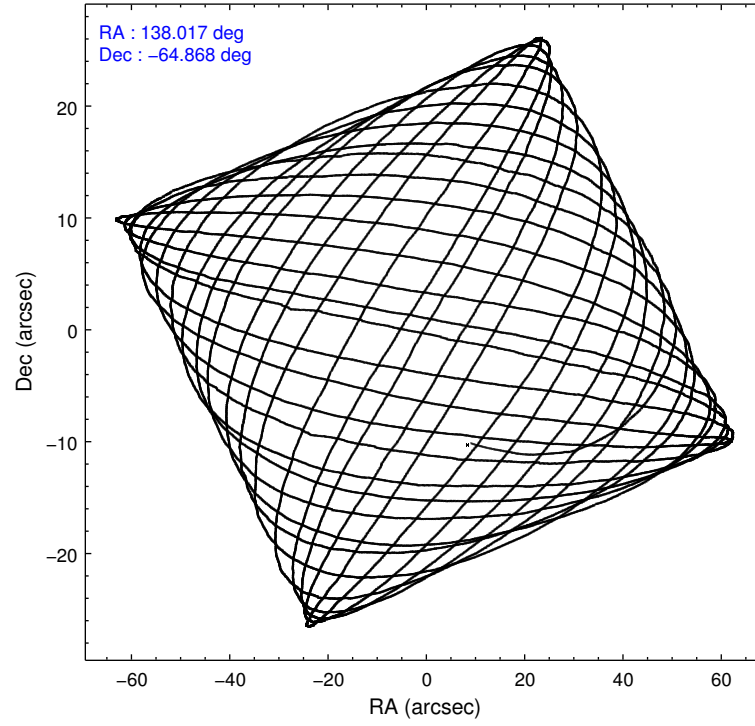
	segment 1	segment 2	segment 3
level 1 events	919	981244	8
rejected events	70	74238	7
rejected %	7%	7%	87%

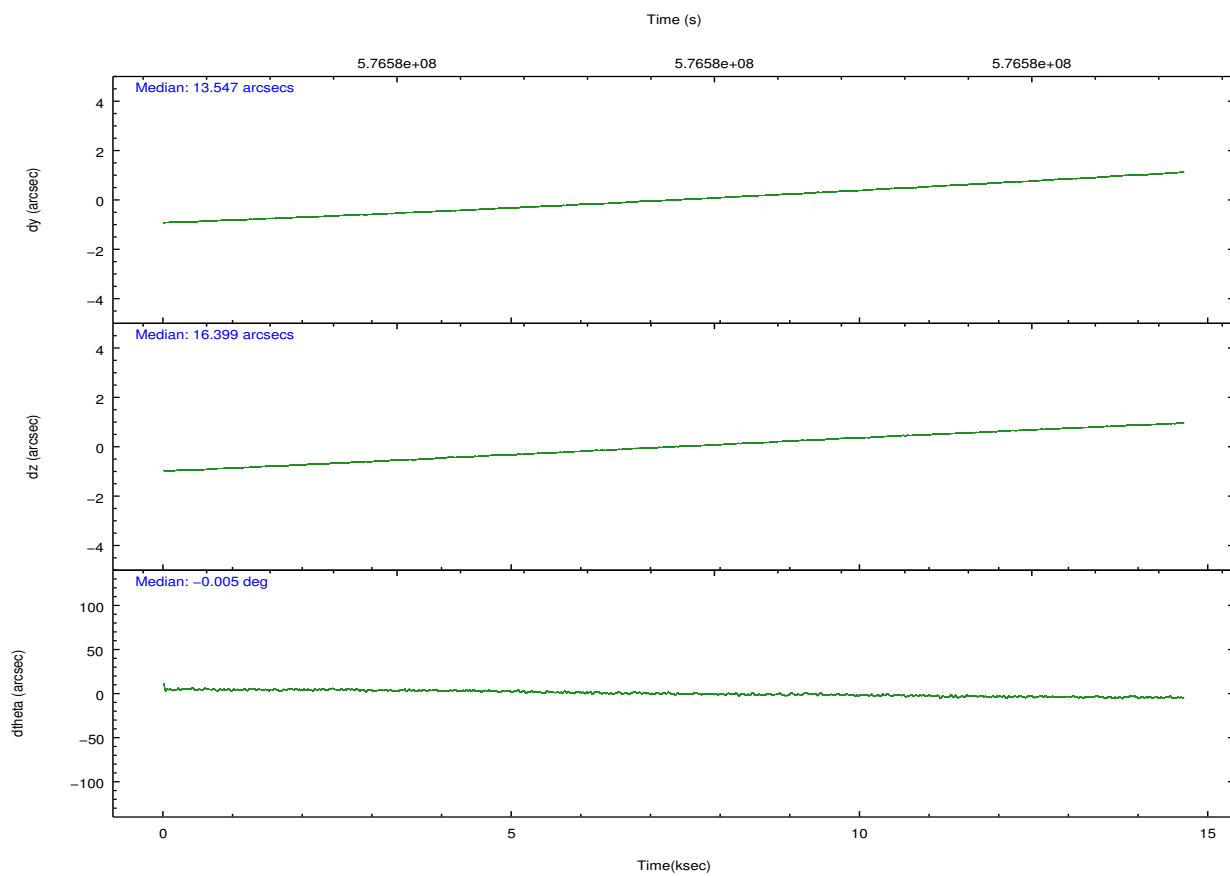
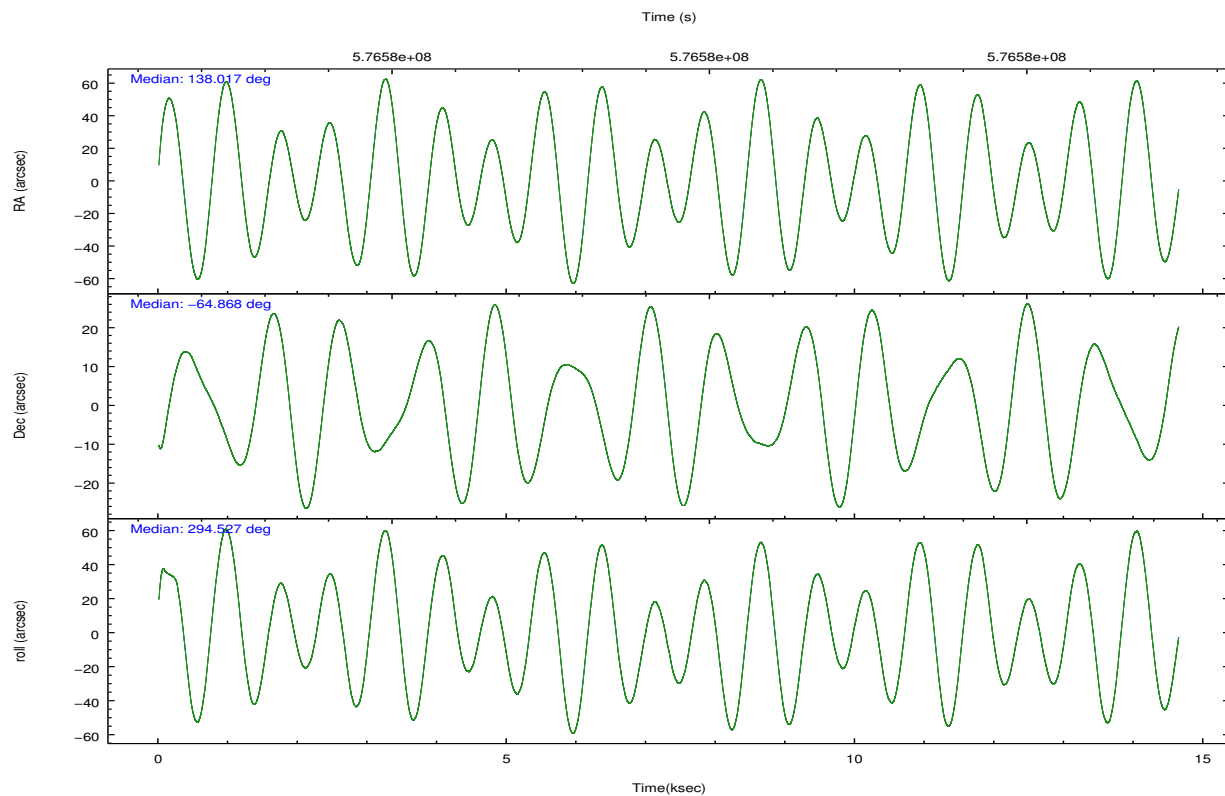
2.2 Compared Parameters

Parameter	Planned	Actual
Instrument	HRC	HRC
Detector	HRC-S	HRC-S
Grating	NONE	NONE
Data mode	OBSERVING	OBSERVING
Observation mode	POINTING	POINTING
[deg] Pointing RA	137.960528	138.0176784348837
[deg] Pointing Dec	-64.852375	-64.86796119354237
[deg] Pointing Roll	294.415966	294.5350578689147
[mm] SIM focus pos	-1.533336	-1.526339935833849
[mm] SIM defocus	7.710433287538843e-07	0.006996703570447904
[mm] SIM translation stage pos	250.455976	250.466033080201
[mm] SIM translation stage offset	0	-0.01005468664627074
[s] Observation start time (MET)	576572188.184000	576570860.43874
Observation start date	2016-04-09T06:55:20	2016-04-09T06:34:20
[s] Observation end time (MET)	576586688.184000	576588022.01472
Observation end date	2016-04-09T10:57:00	2016-04-09T11:20:22

Parameter	Planned	Actual
Obspar format version number	7	7
Obspar file type	PREDICTED	ACTUAL
Obspar update status	NONE	UPDATED

2.3 Aspect



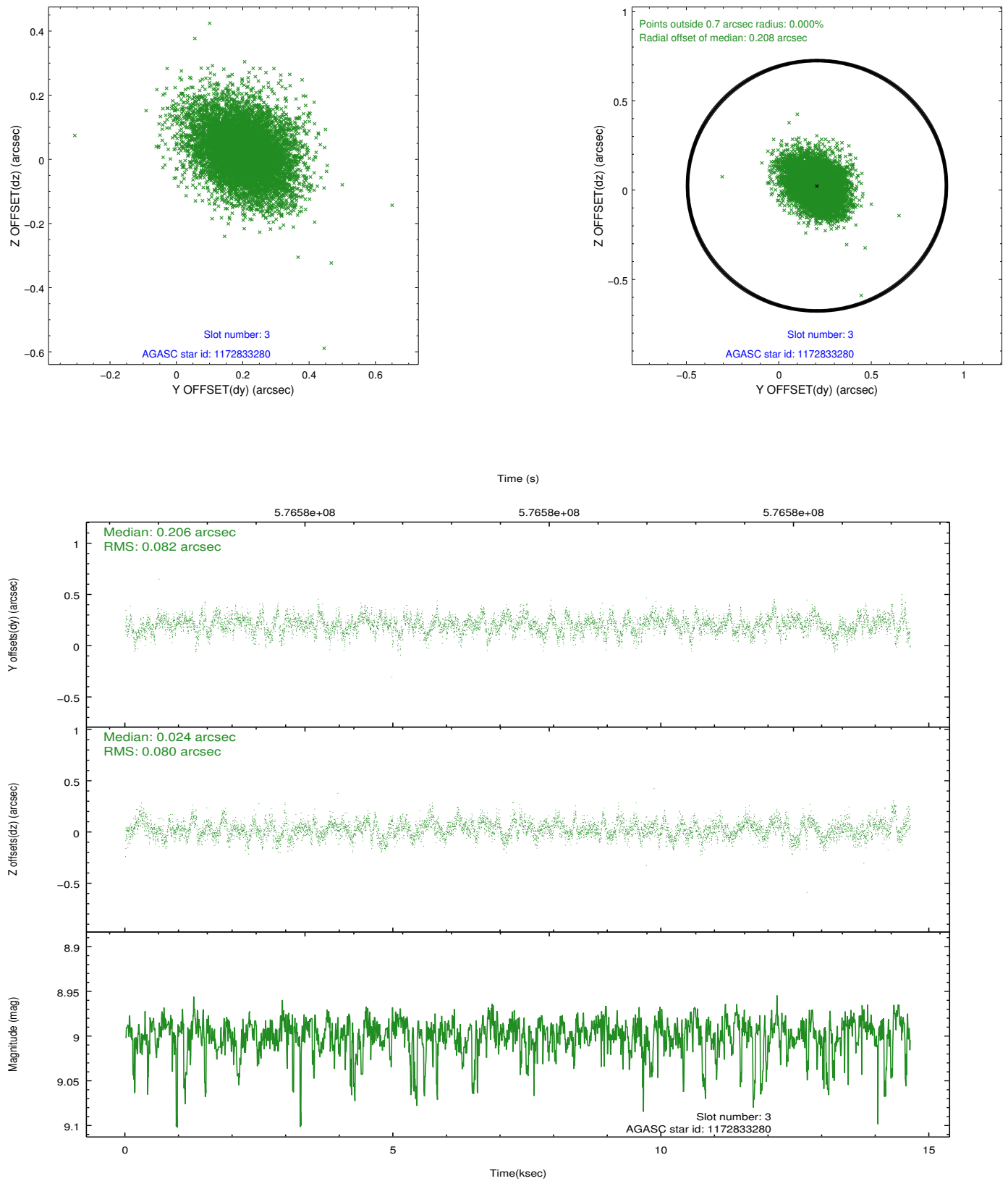


Slot Statistics

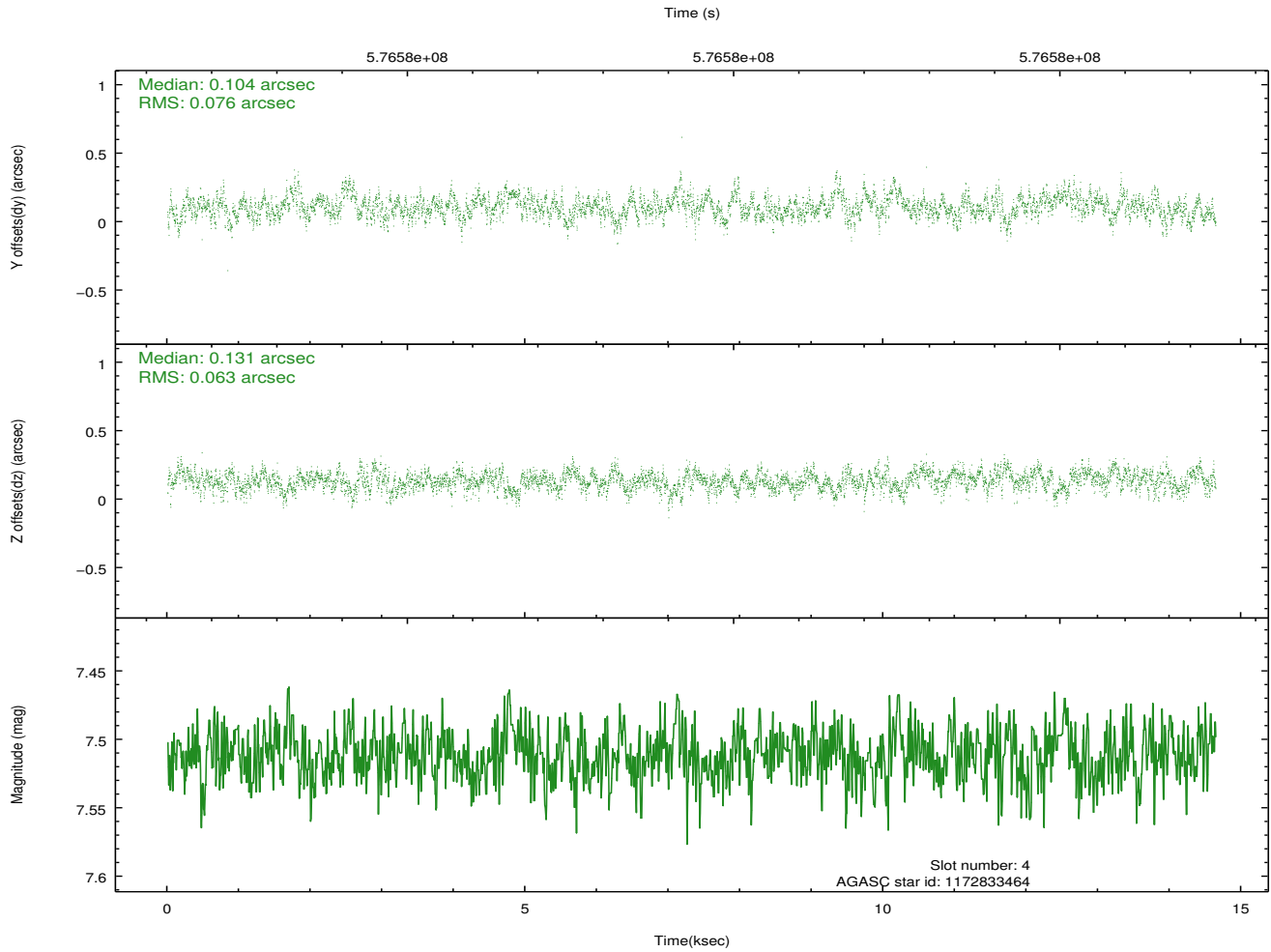
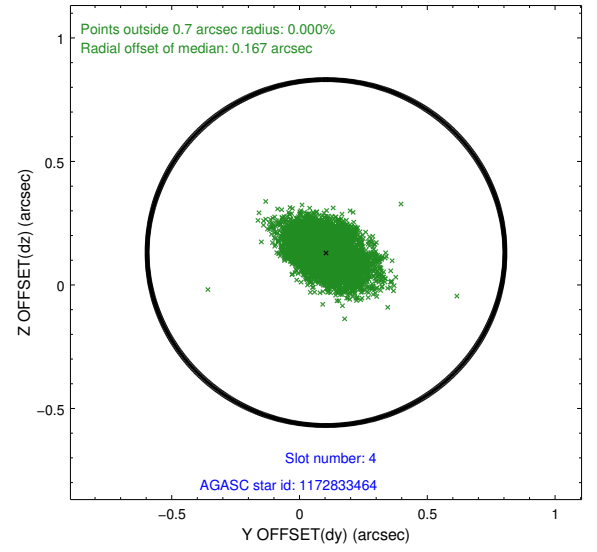
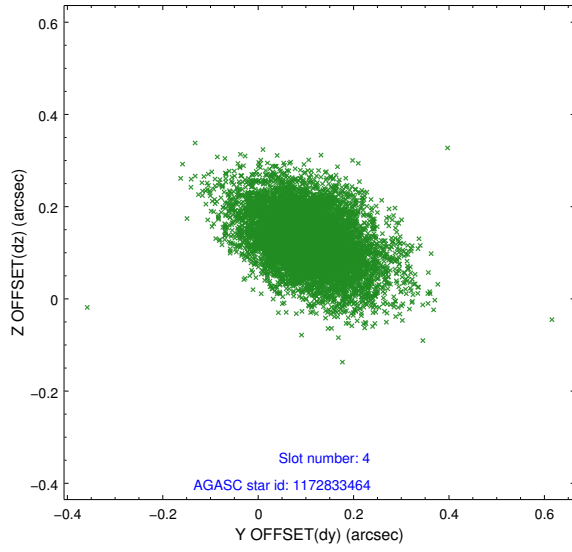
slot	status	used	id	mag	n_pts	med_dy	med_dz	dr1	dr2	ra	dec	mean_y	mean_z
0	FID		HRC-S-2	6.99	3571	0.196	-0.147	0.023	0.037	0.000000	0.000000	1231.86	-457.88
1	FID		HRC-S-3	7.00	3571	-0.087	-0.072	0.027	0.041	0.000000	0.000000	-1170.48	564.18
2	FID		HRC-S-4	6.96	3571	0.296	-0.075	0.014	0.024	0.000000	0.000000	1230.19	567.07
3	GUIDE	used	1172833280	9.00	7137	0.206	0.024	0.119	0.202	138.500210	-64.197191	-1794.42	1743.46
4	GUIDE	used	1172833464	7.51	7143	0.104	0.131	0.102	0.175	137.532282	-65.489504	1825.71	-1530.70
5	GUIDE	used	1172834296	9.38	7137	-0.120	-0.183	0.147	0.235	138.408689	-65.198469	1417.11	100.17
6	GUIDE	used	1172843336	6.88	7143	-0.118	-0.259	0.097	0.159	138.594730	-65.053954	1063.46	574.49
7	GUIDE	used	1172838424	9.63	7126	-0.069	0.296	0.210	0.358	137.580666	-65.505266	1908.27	-1487.83

2.4 Star Slots

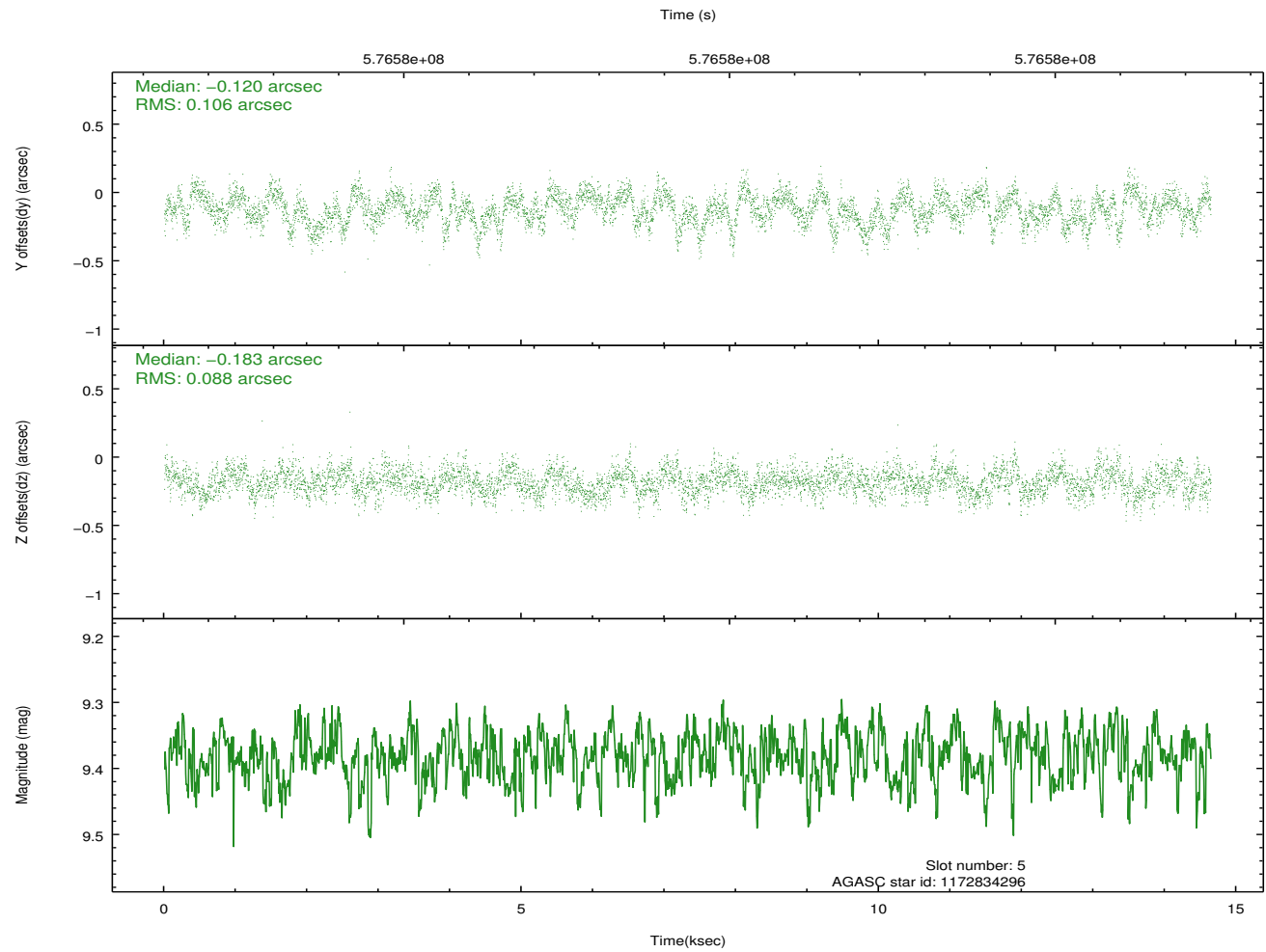
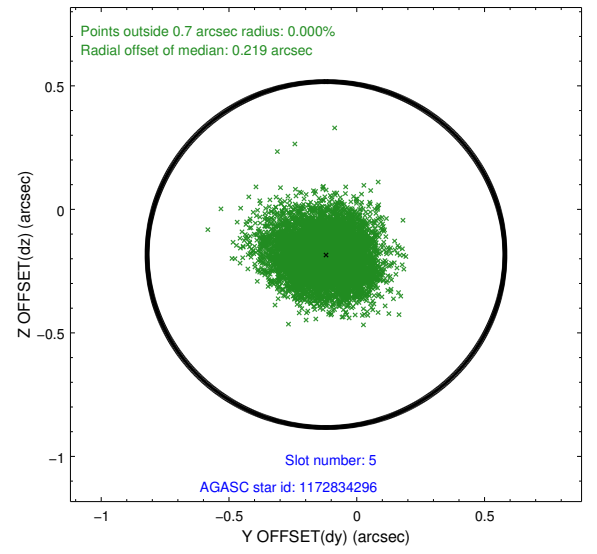
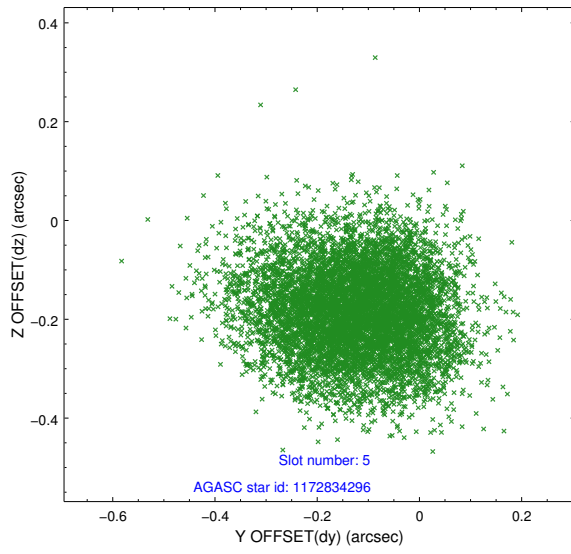
2.4.1 Slot 3



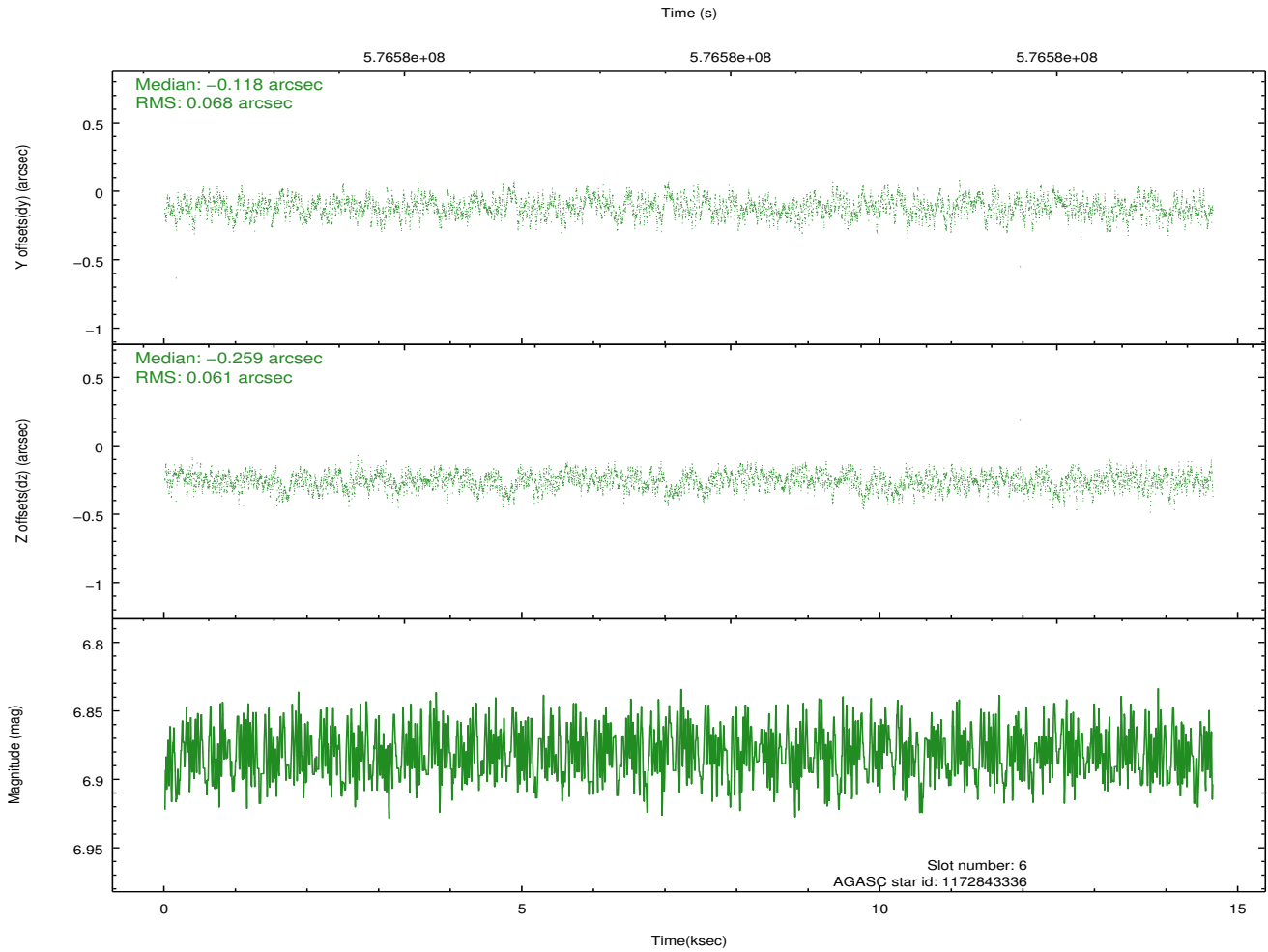
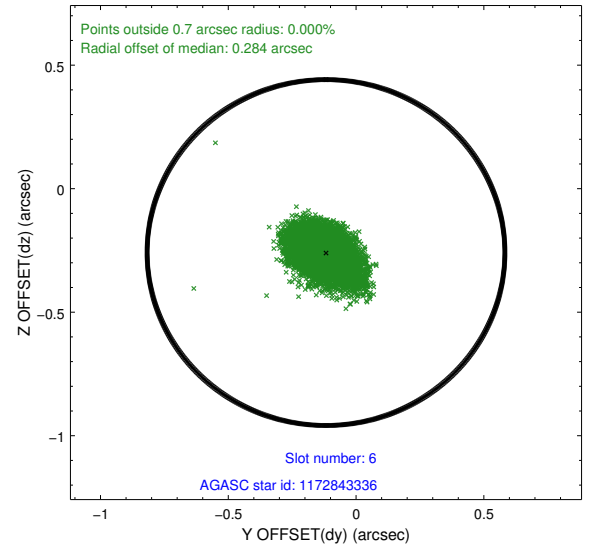
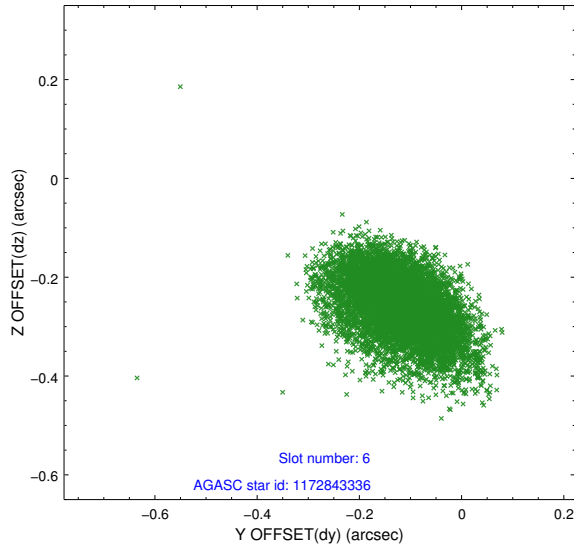
2.4.2 Slot 4



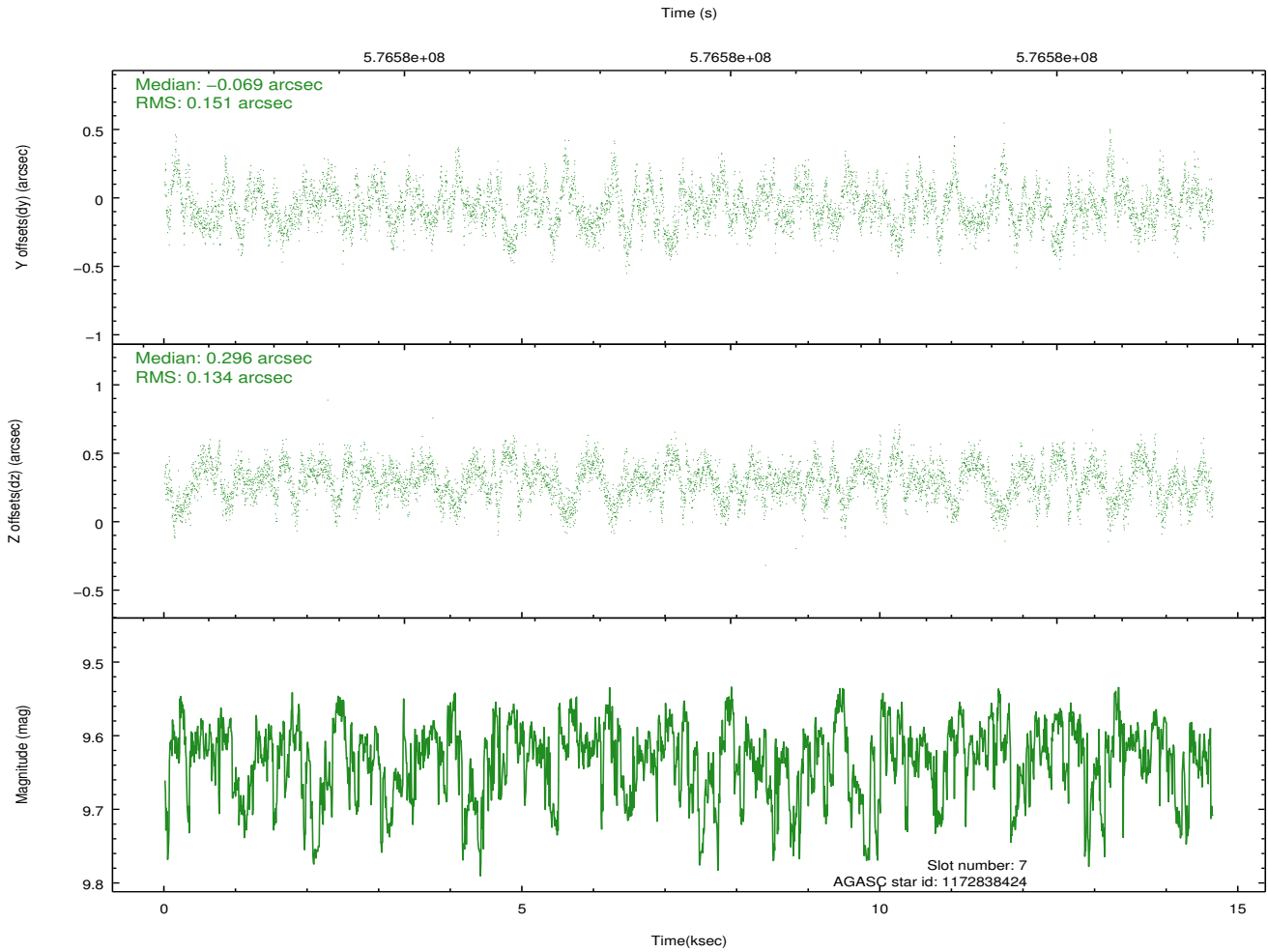
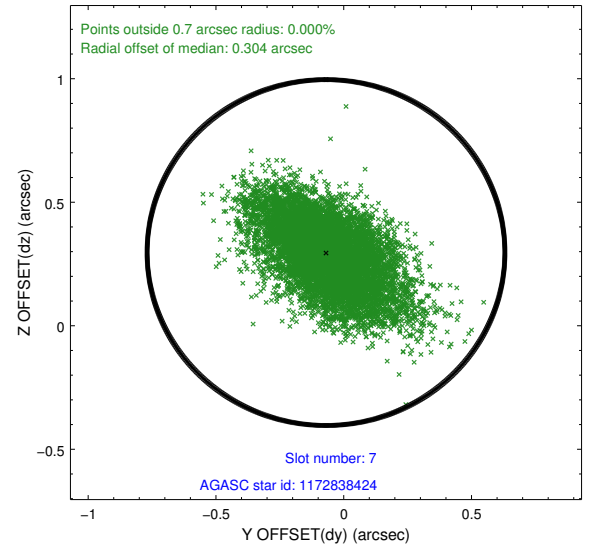
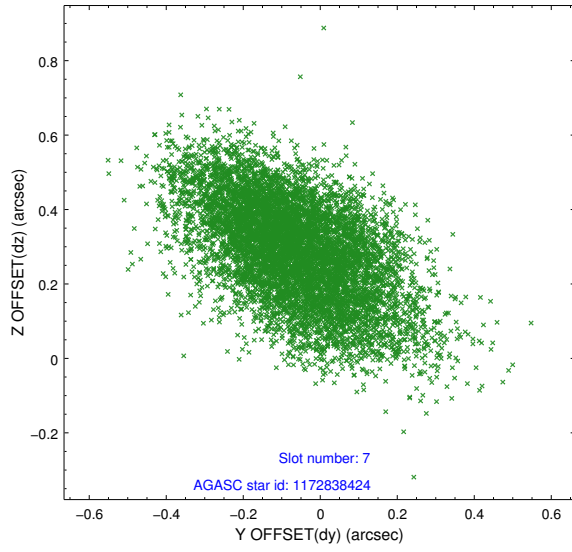
2.4.3 Slot 5



2.4.4 Slot 6

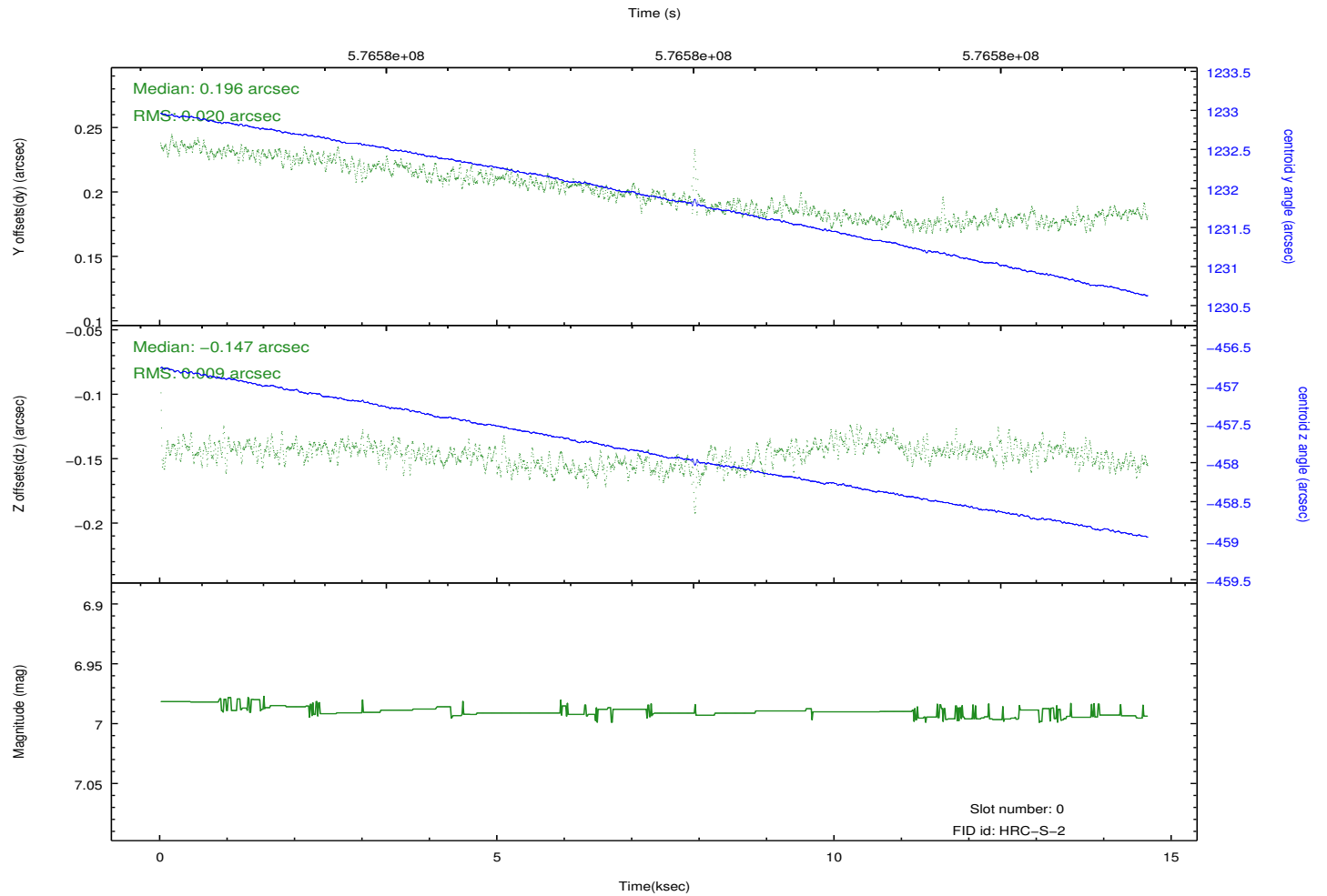
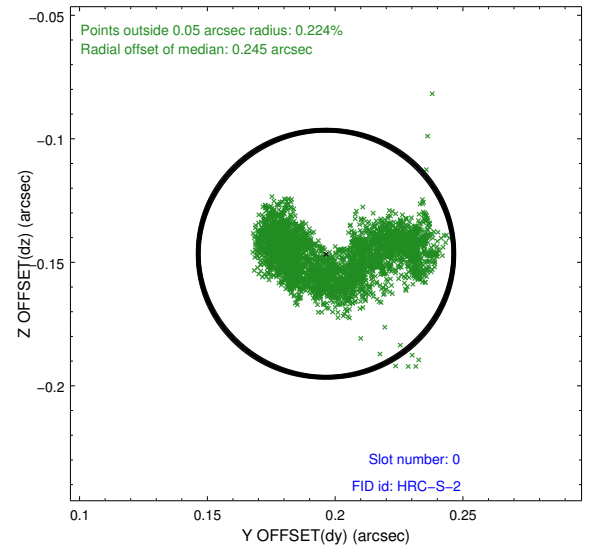
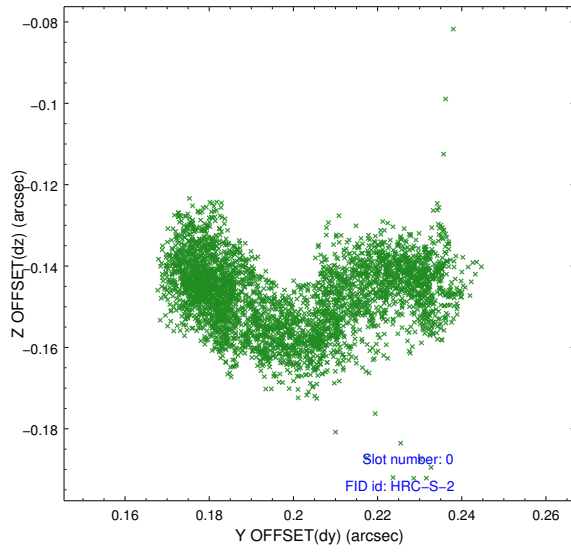


2.4.5 Slot 7

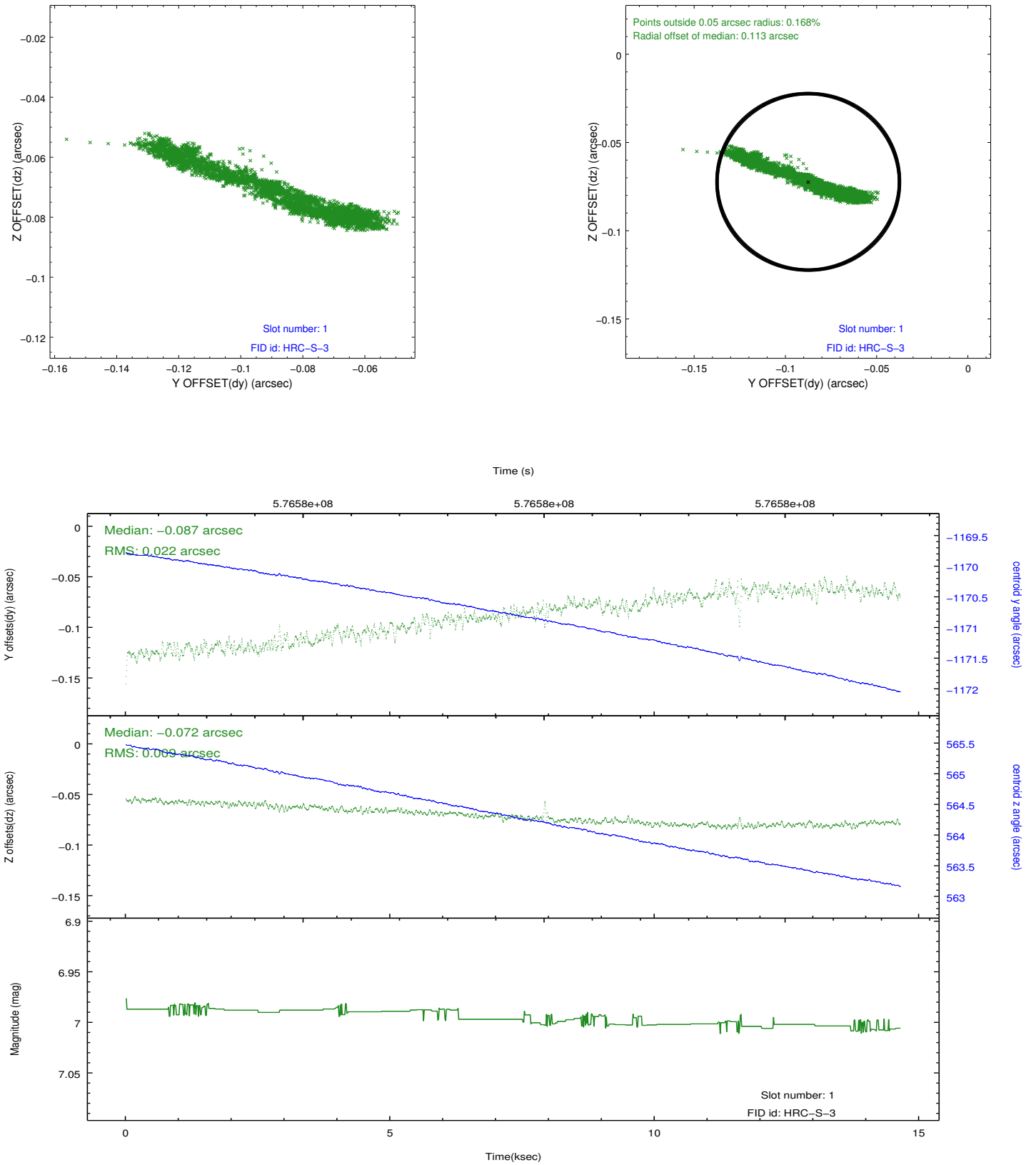


2.5 FID Slots

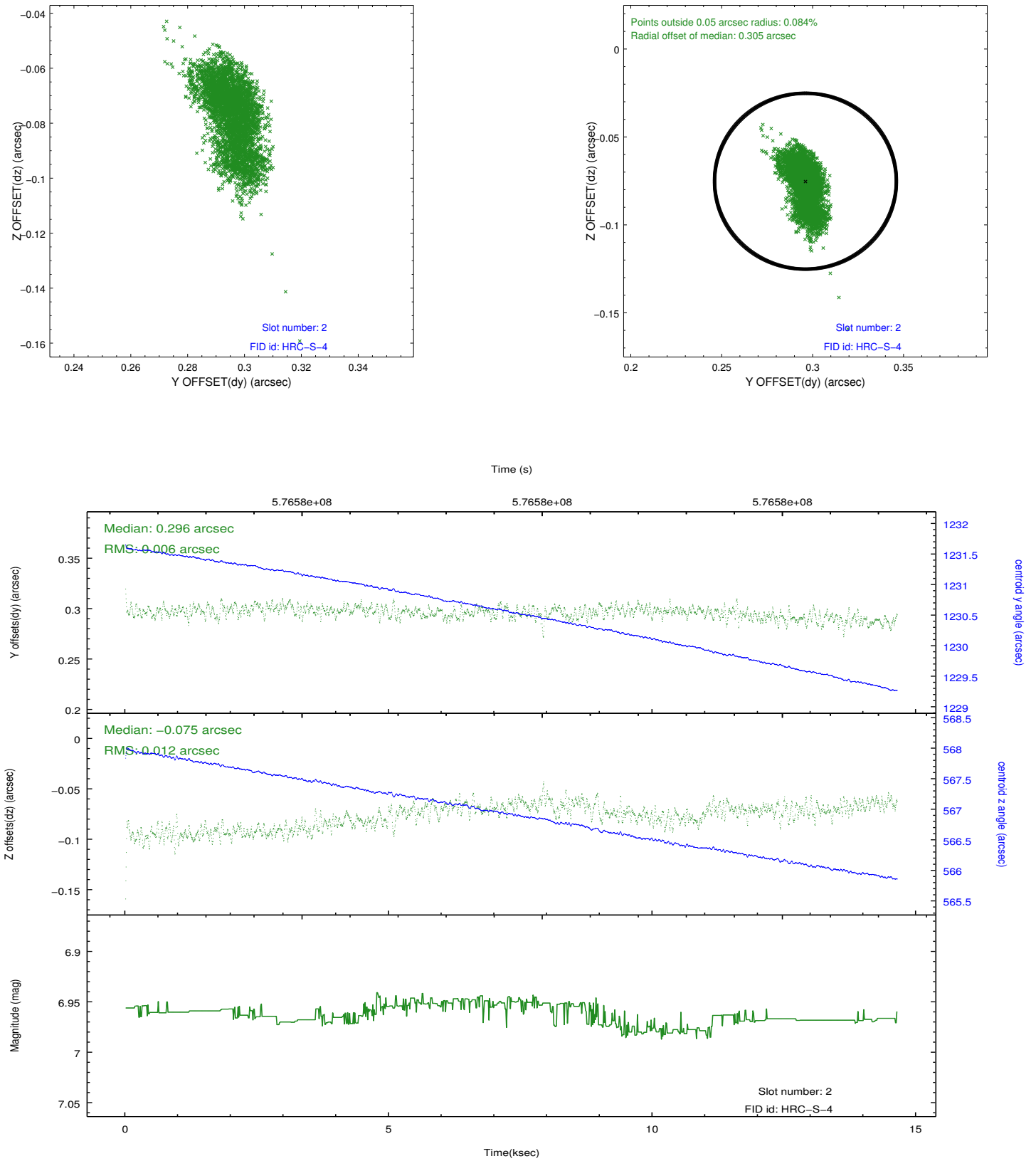
2.5.1 Slot 0



2.5.2 Slot 1



2.5.3 Slot 2



A Summary

A.1 Status

V&V Scientist	Beth Sundheim
V&V Date (YYYY-MM-DD)	2016.04.10
V&V Edition	1
V&V Disposition and Status	OK
V&V Charge Time	14.640332086802

A.2 Comments