

V&V Reference Report

L2 ASCDS Version : 10.5.1.1

Observation 16680 - L2 Version 1
Chandra X-Ray Center

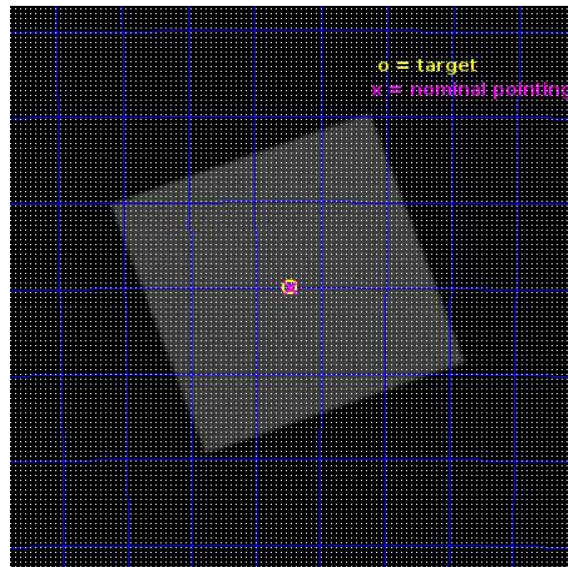
L2 Processing Date : Oct 8 2016

Contents

1	Front	2
2	OBI	3
2.1	OBI	3
2.1.1	Images	3
2.1.2	Parameters	4
2.1.3	Events	4
2.2	Compared Parameters	5
2.3	Aspect	6
2.4	Star Slots	9
2.4.1	Slot 3	9
2.4.2	Slot 4	10
2.4.3	Slot 5	11
2.4.4	Slot 6	12
2.4.5	Slot 7	13
2.5	FID Slots	14
2.5.1	Slot 0	14
2.5.2	Slot 1	15
2.5.3	Slot 2	16
A	Summary	17
A.1	Status	17
A.2	Comments	17

1 Front

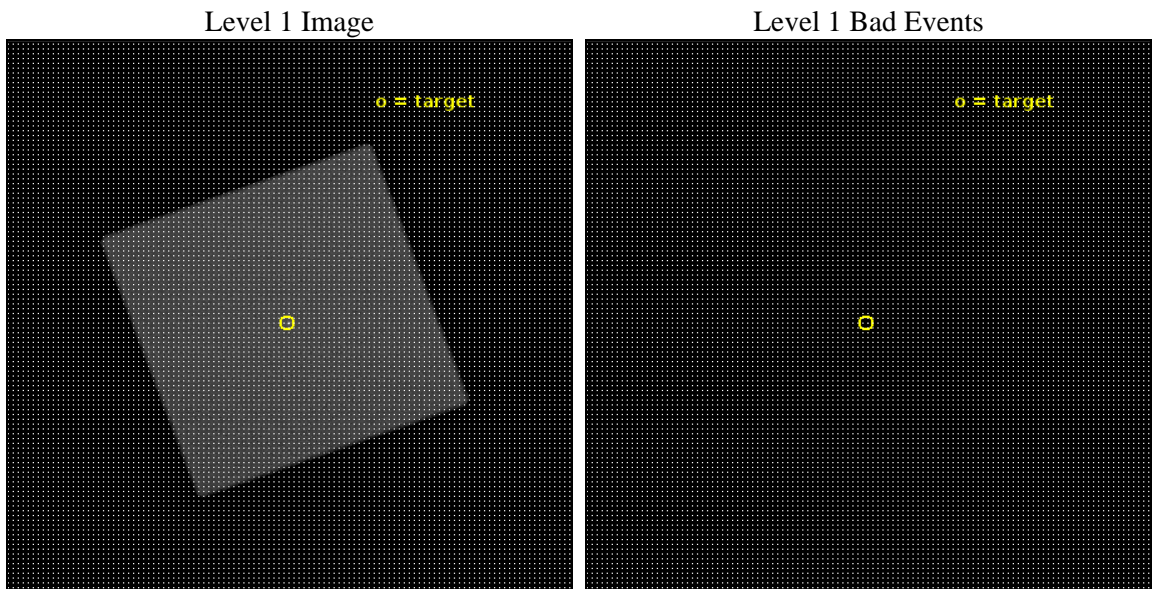
seq_num	201001	Sequence number
obs_id	16680	Observation id
title	Alpha Centauri at a Crossroads	Proposal title
observer	Thomas Ayres	Principal investigator
object	ALPHA CEN	Source name
ra_targ	219.867917	Observer's specified target RA [deg]
dec_targ	-60.832556	Observer's specified target Dec [deg]
ra_nom	219.86131382991	Nominal RA [deg]
dec_nom	-60.833384030797	Nominal Dec [deg]
roll_nom	204.89866200758	Nominal Roll [deg]
revision	1	Processing version of data
ontime	10122.900583386	[s]
livetime	10005.15888877	Ontime multiplied by DTCOR
l2events	983950	Number of level 2 events



2 OBI

2.1 OBI

2.1.1 Images



2.1.2 Parameters

obi_num	0	Obi number	sched_exp_time	10000.000000	[s] Scheduled observation exposure time
ascdsver	10.5.1.1	Processing system revision	ontime	10122.900583386	[s]
caldbver	4.7.2	 	l1events	1446003	Number of level 1 events
date	2016-10-09T01:35:34	Date and time of file creation			
revision	1	Processing version of data			

2.1.3 Events

Level 1 Events

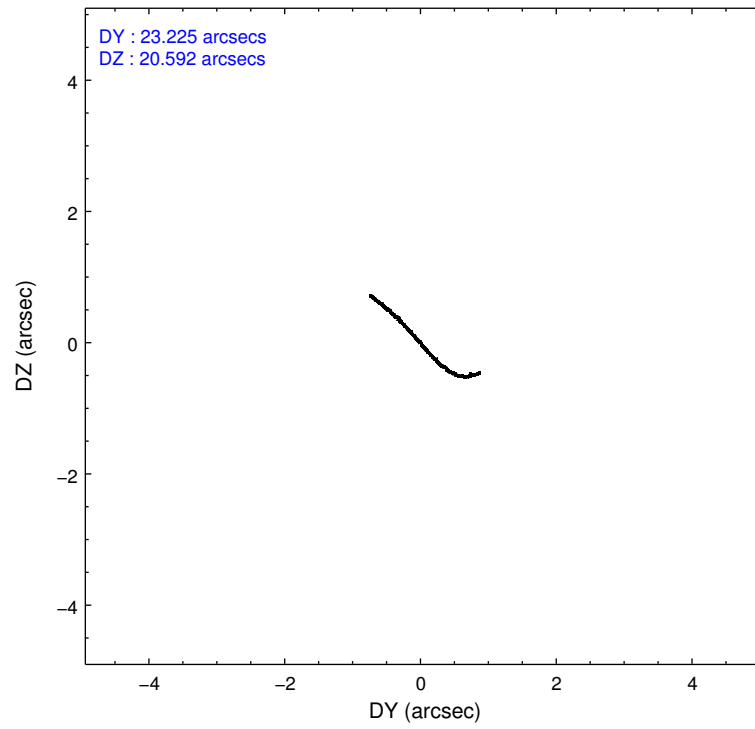
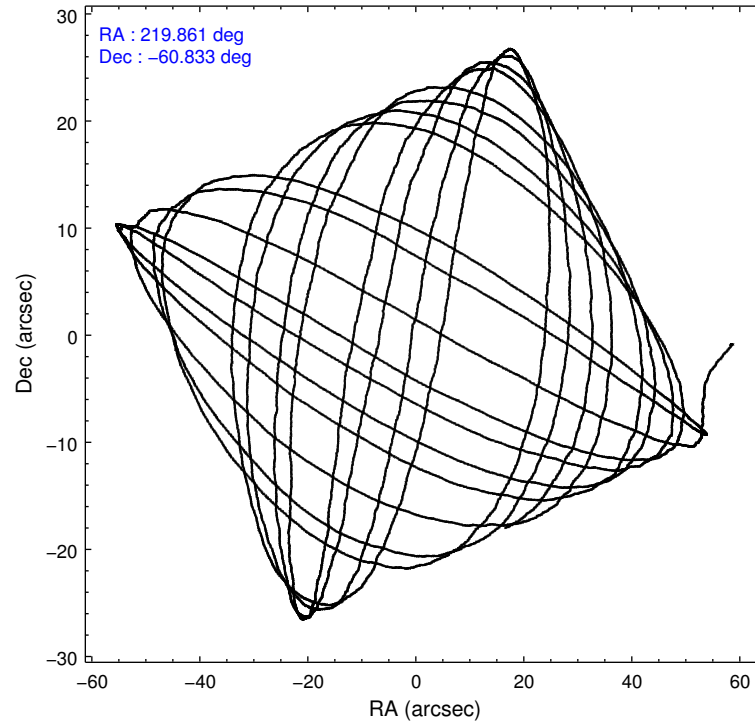
	segment 0
level 1 events	1446003
rejected events	142148
rejected %	9%

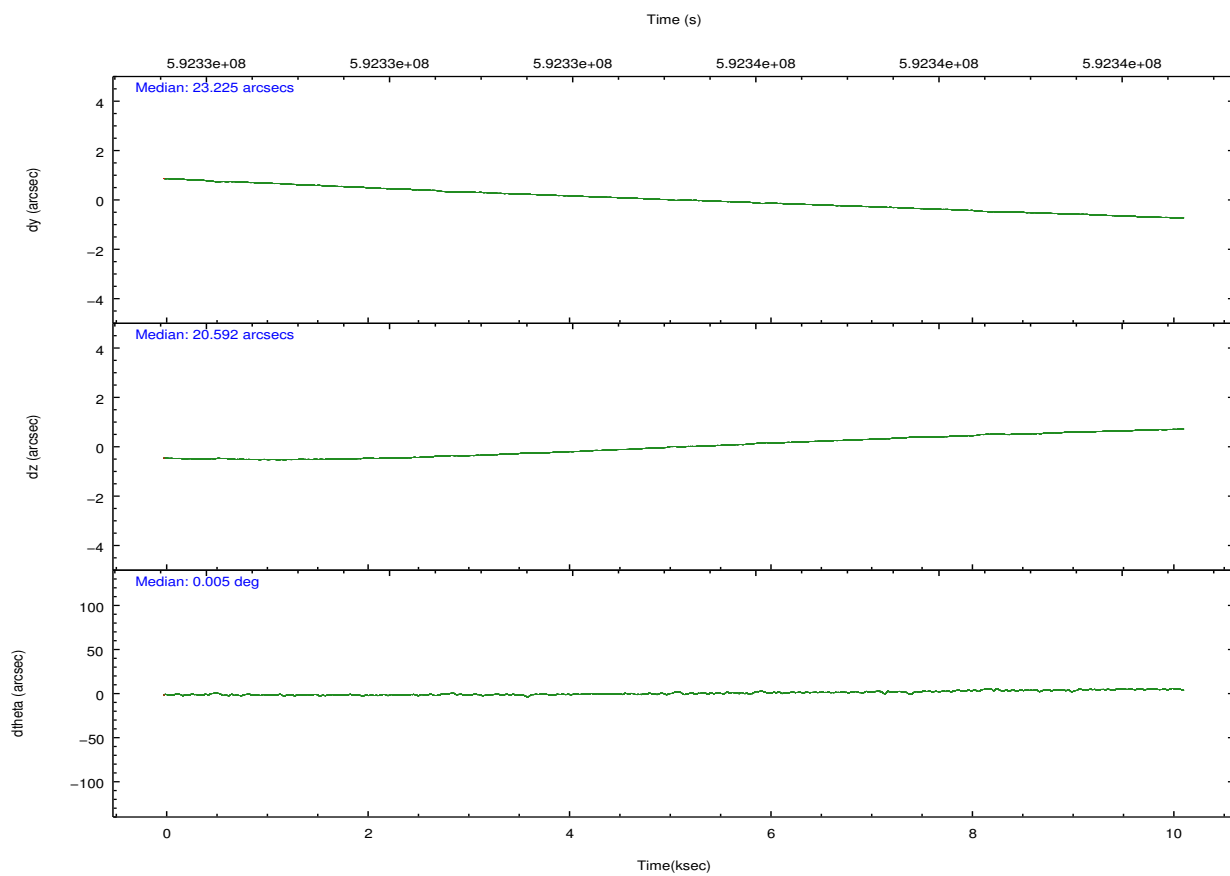
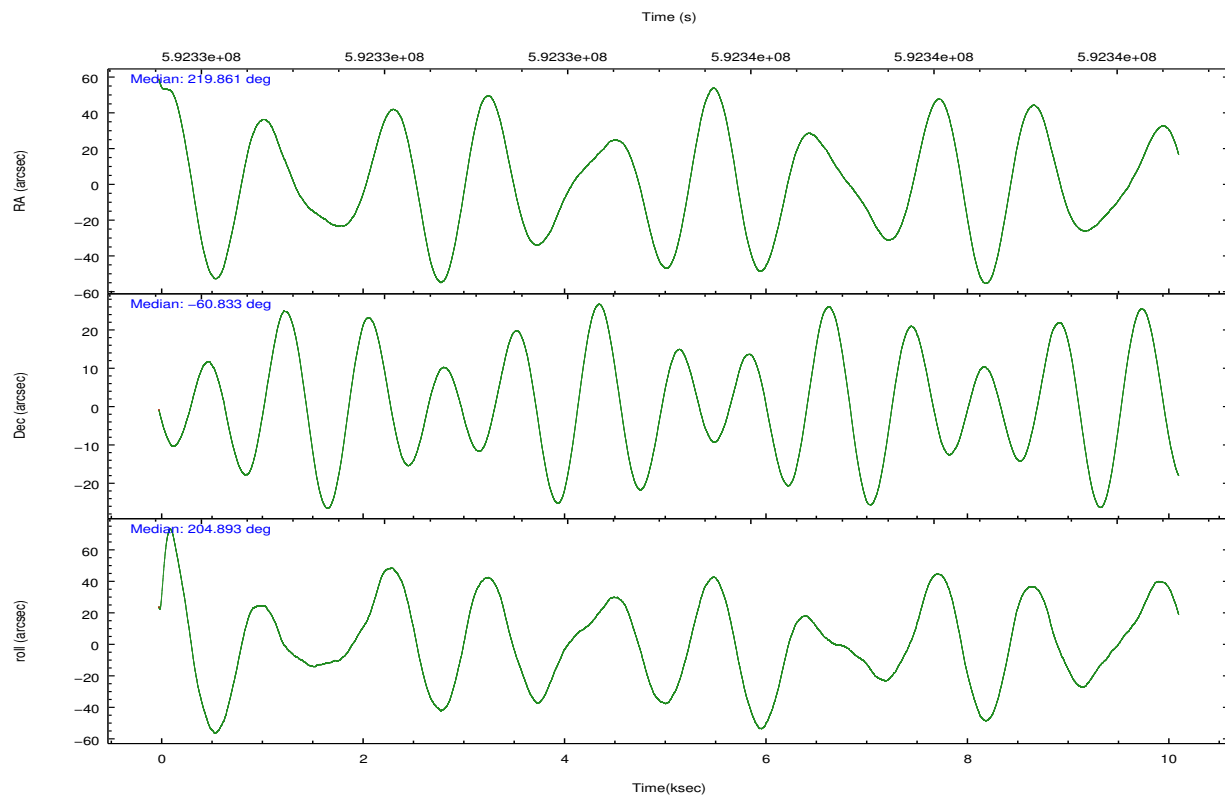
2.2 Compared Parameters

Parameter	Planned	Actual
Instrument	HRC	HRC
Detector	HRC-I	HRC-I
Grating	NONE	NONE
Data mode	OBSERVING	OBSERVING
Observation mode	POINTING	POINTING
[deg] Pointing RA	219.892176	219.8613138299108
[deg] Pointing Dec	-60.810687	-60.83338403079657
[deg] Pointing Roll	205.021178	204.898662007585
[mm] SIM focus pos	-1.040293	-1.038866356238299
[mm] SIM defocus	0	0.001426264420575141
[mm] SIM translation stage pos	126.985494	126.9829799899862
[mm] SIM translation stage offset	0	0.002508901615314585
[s] Observation start time (MET)	592330145.184000	592328920.75518
Observation start date	2016-10-08T16:07:57	2016-10-08T15:48:40
[s] Observation end time (MET)	592340145.184000	592340832.2808599
Observation end date	2016-10-08T18:54:37	2016-10-08T19:07:12

Parameter	Planned	Actual
Obspar format version number	7	7
Obspar file type	PREDICTED	ACTUAL
Obspar update status	NONE	UPDATED

2.3 Aspect



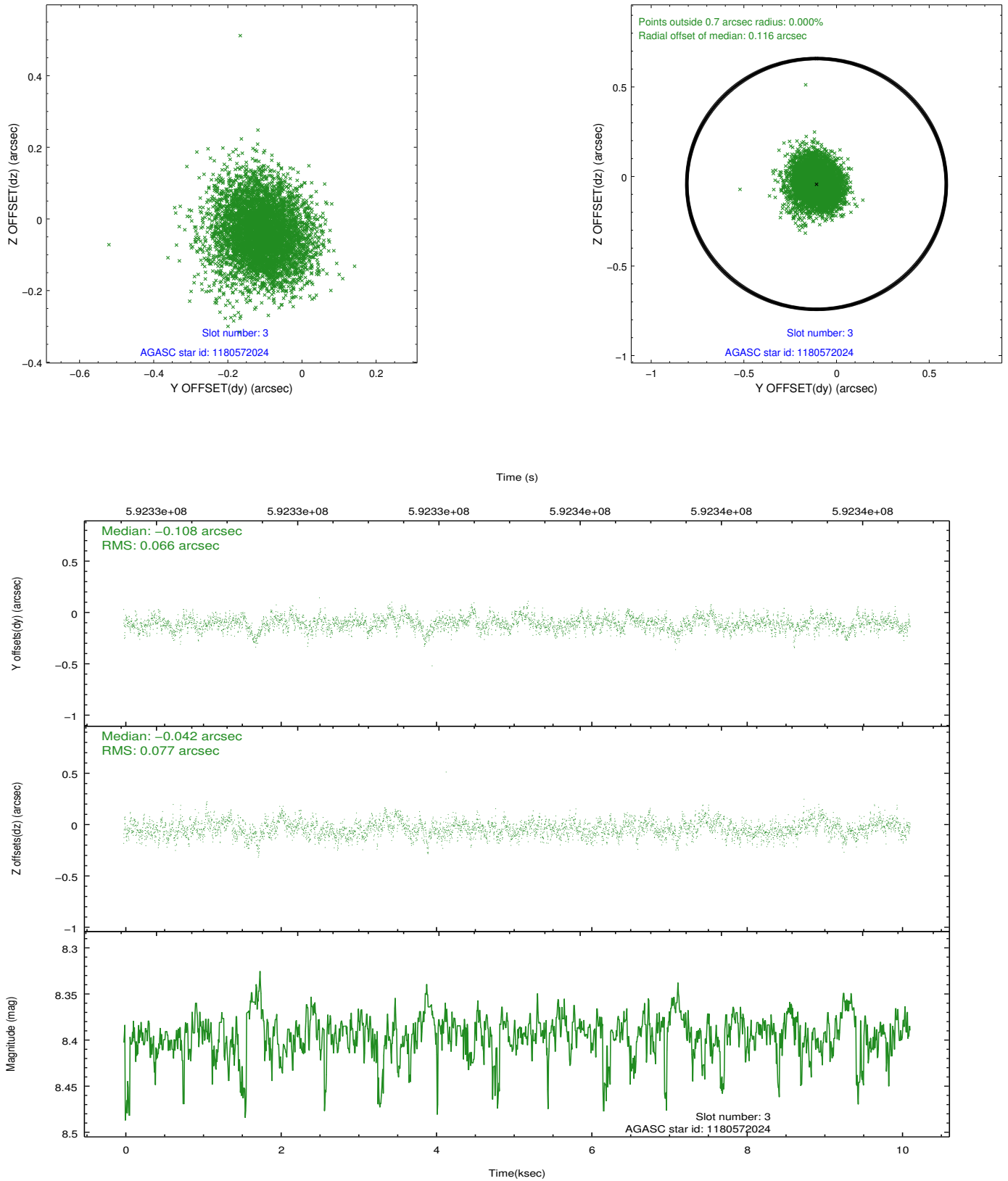


Slot Statistics

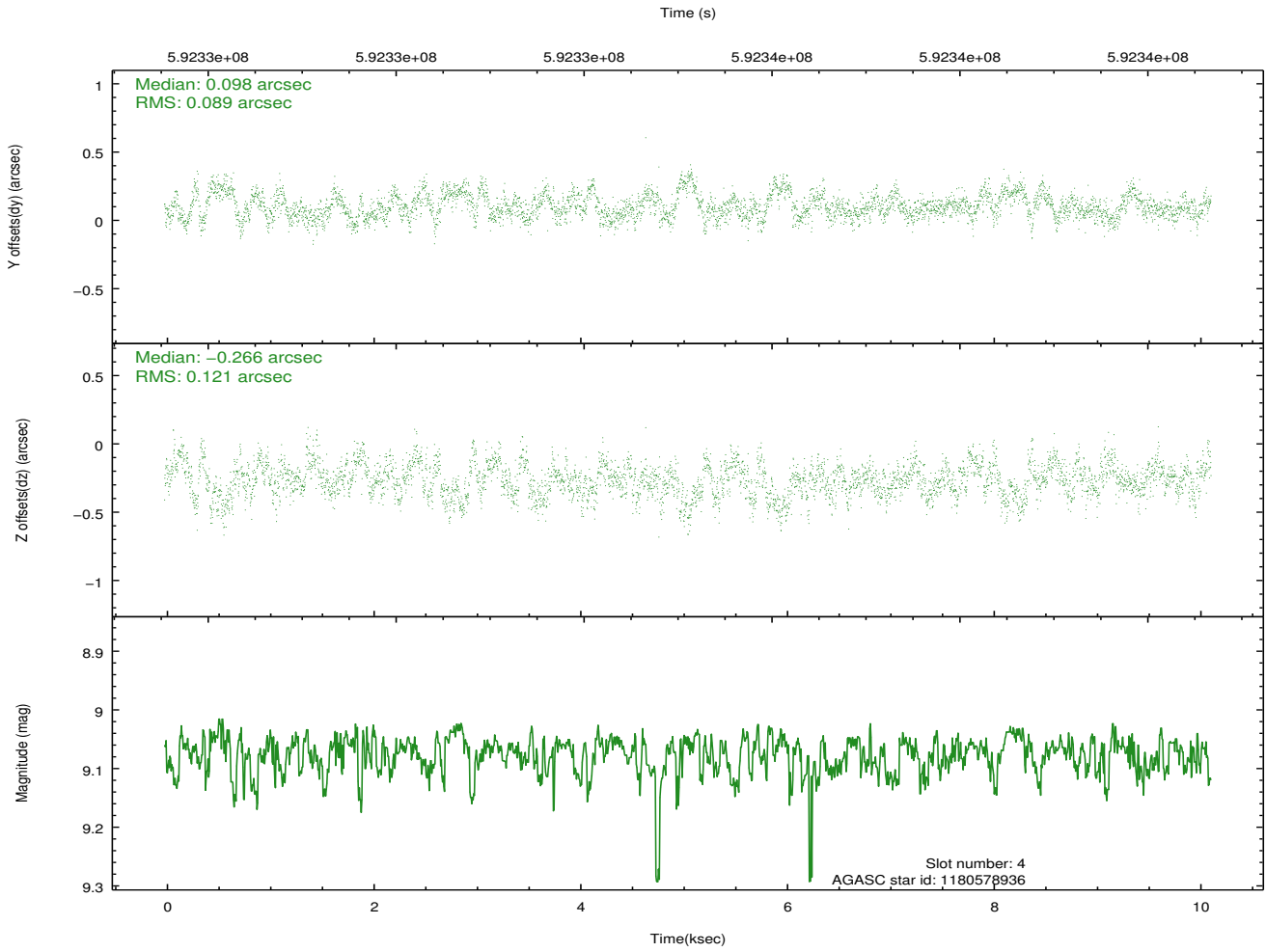
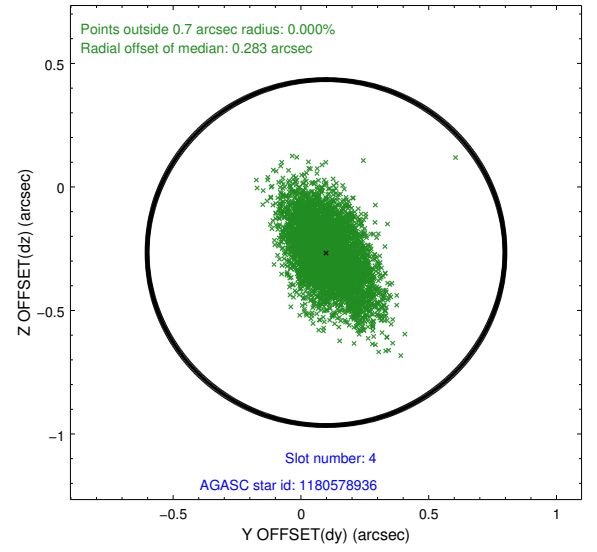
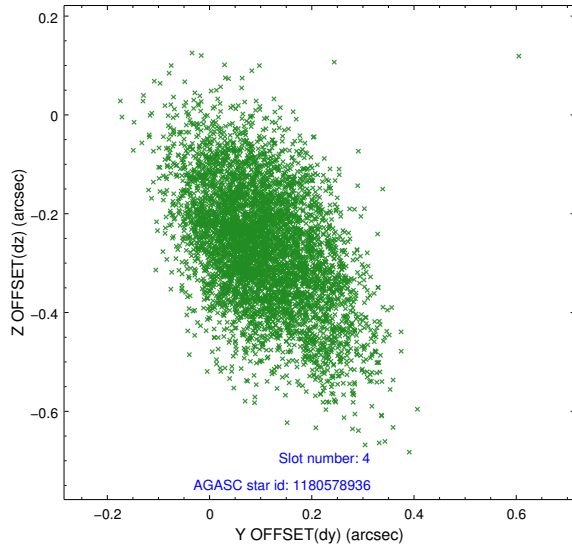
slot	status	used	id	mag	n_pts	med_dy	med_dz	dr1	dr2	ra	dec	mean_y	mean_z
0	FID		HRC-I-1	7.01	2470	-0.221	-0.010	0.023	0.033	0.000000	0.000000	-779.41	-1308.91
1	FID		HRC-I-2	7.04	2470	0.352	-0.092	0.021	0.041	0.000000	0.000000	833.47	-1310.99
2	FID		HRC-I-3	7.11	2470	-0.012	0.020	0.022	0.048	0.000000	0.000000	-1207.49	995.13
3	GUIDE	used	1180572024	8.39	4936	-0.108	-0.042	0.106	0.175	220.930377	-60.981487	-1376.17	1336.81
4	GUIDE	used	1180578936	9.07	4937	0.098	-0.266	0.154	0.273	220.919358	-61.155393	-1085.33	1891.55
5	GUIDE	used	1180589152	9.24	4930	-0.331	-0.545	0.159	0.273	219.760705	-61.382926	1076.88	1771.01
6	GUIDE	used	1180607728	9.29	4935	0.292	0.552	0.184	0.308	219.907127	-60.060122	-1165.69	-2436.34
7	GUIDE	used	1180612104	8.99	4934	0.052	0.293	0.154	0.253	220.502279	-60.631704	-1245.83	-124.11

2.4 Star Slots

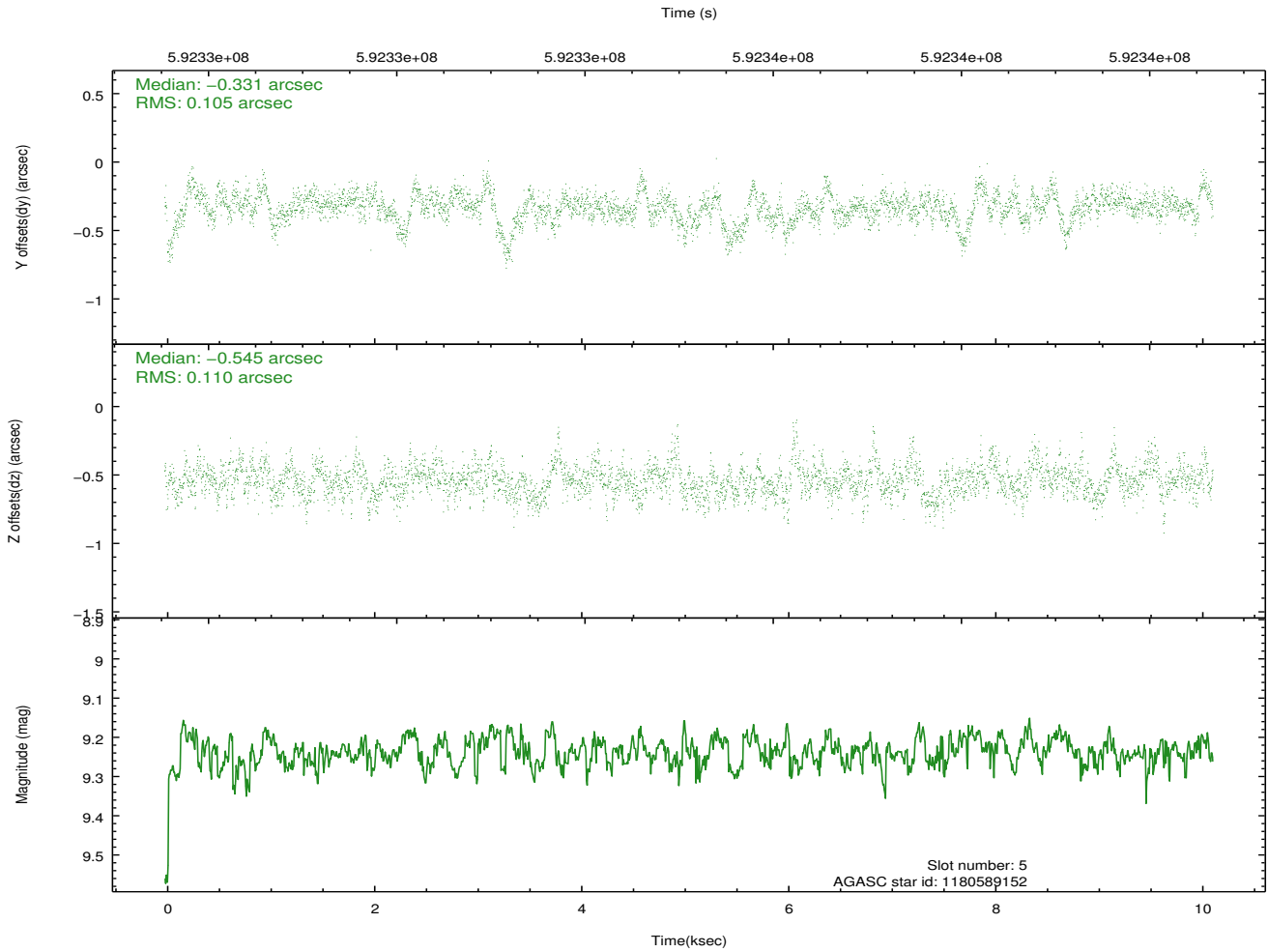
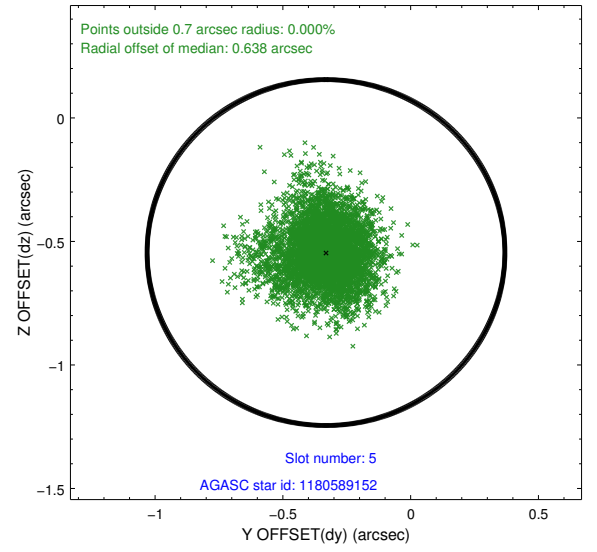
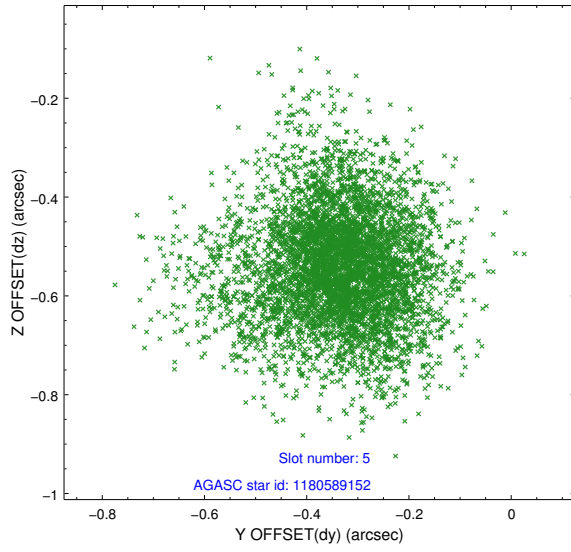
2.4.1 Slot 3



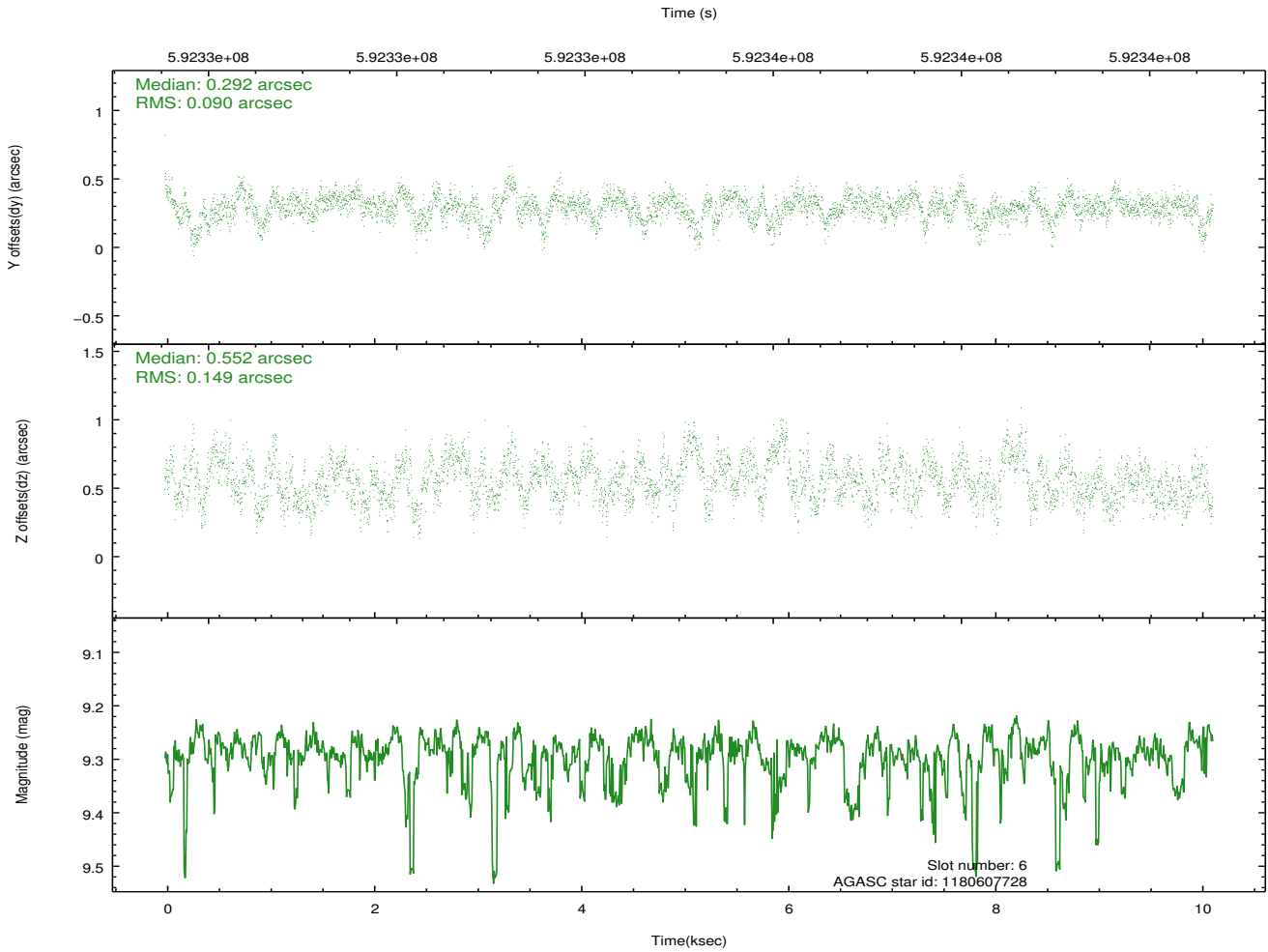
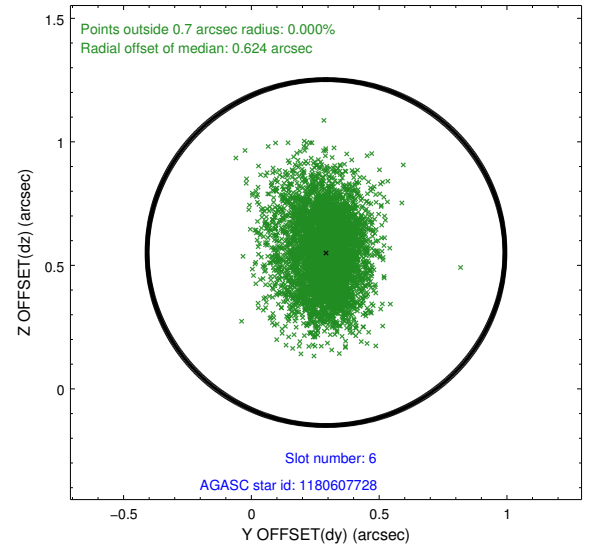
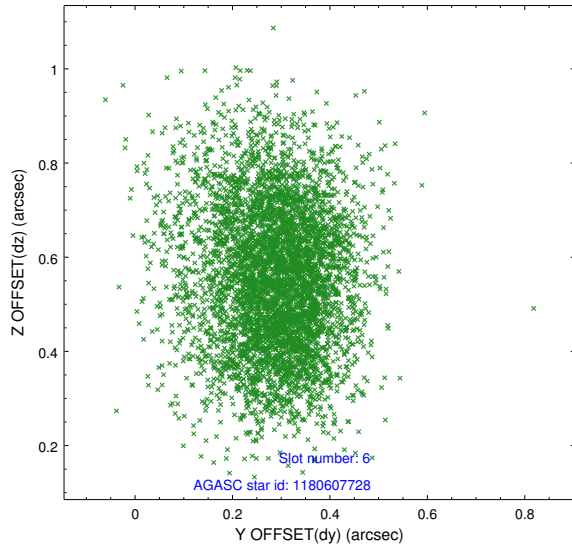
2.4.2 Slot 4



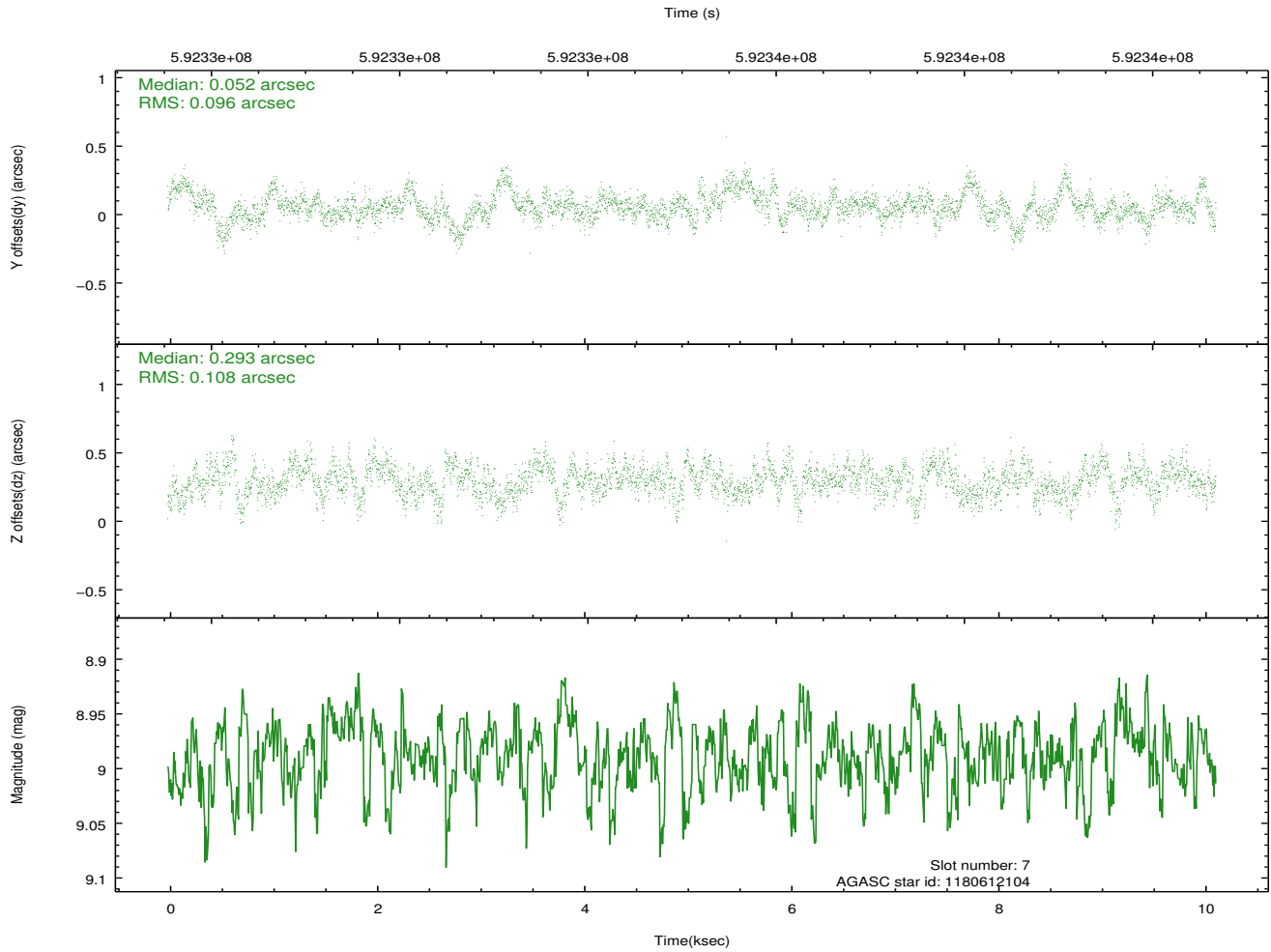
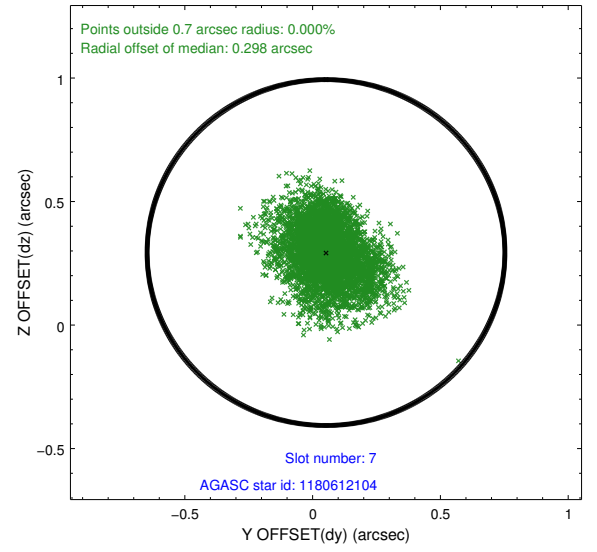
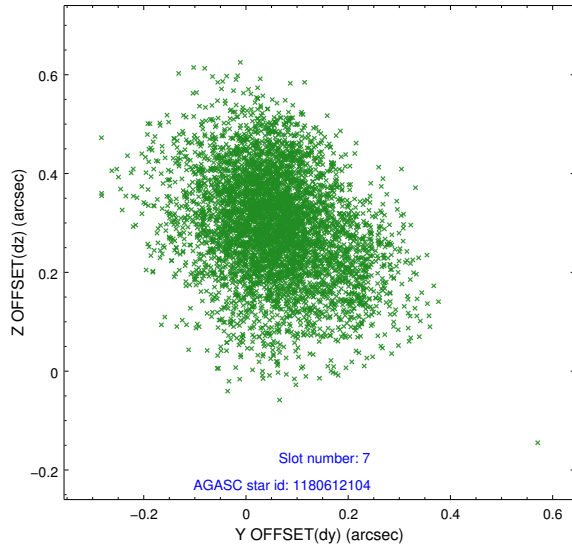
2.4.3 Slot 5



2.4.4 Slot 6

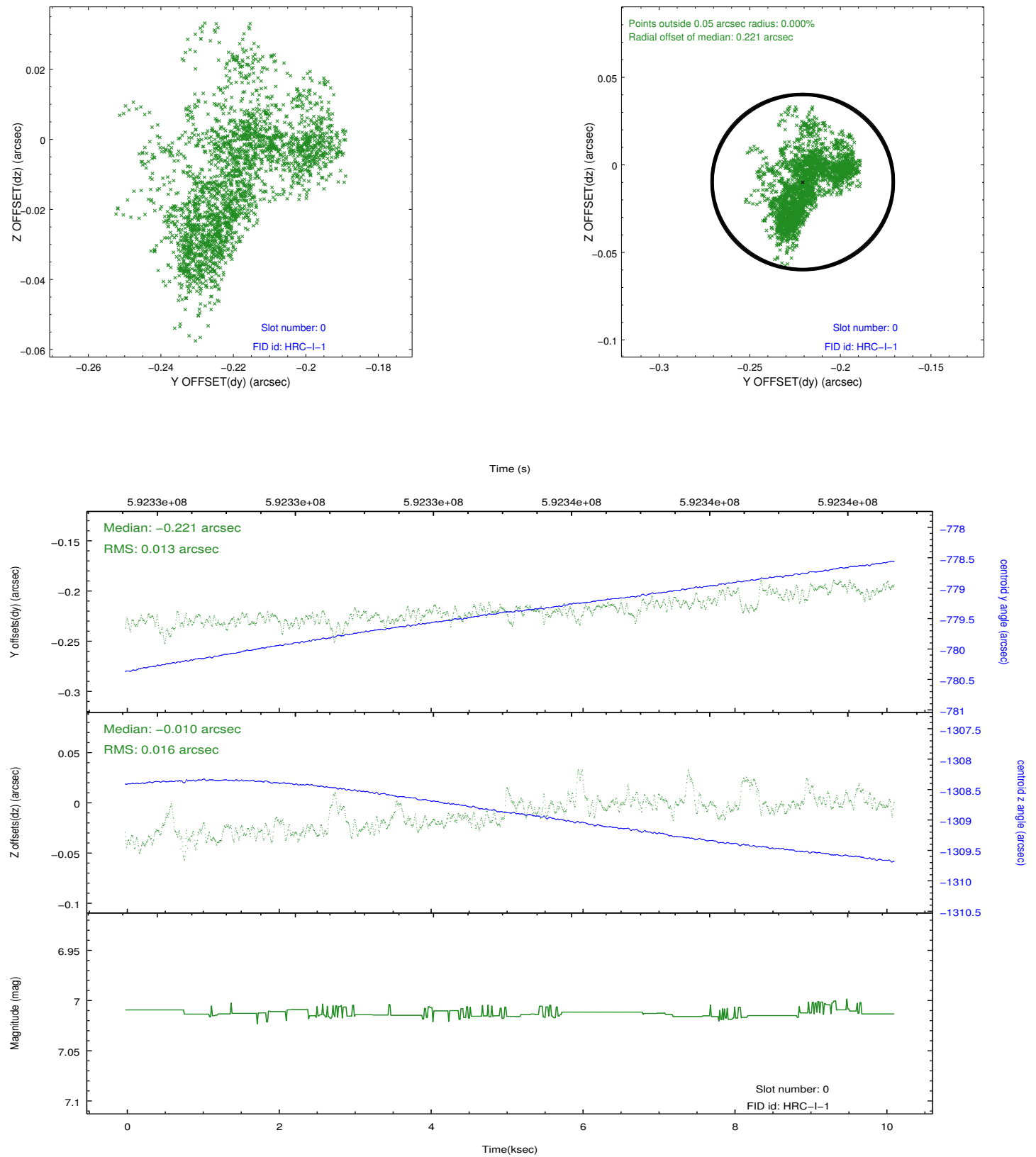


2.4.5 Slot 7

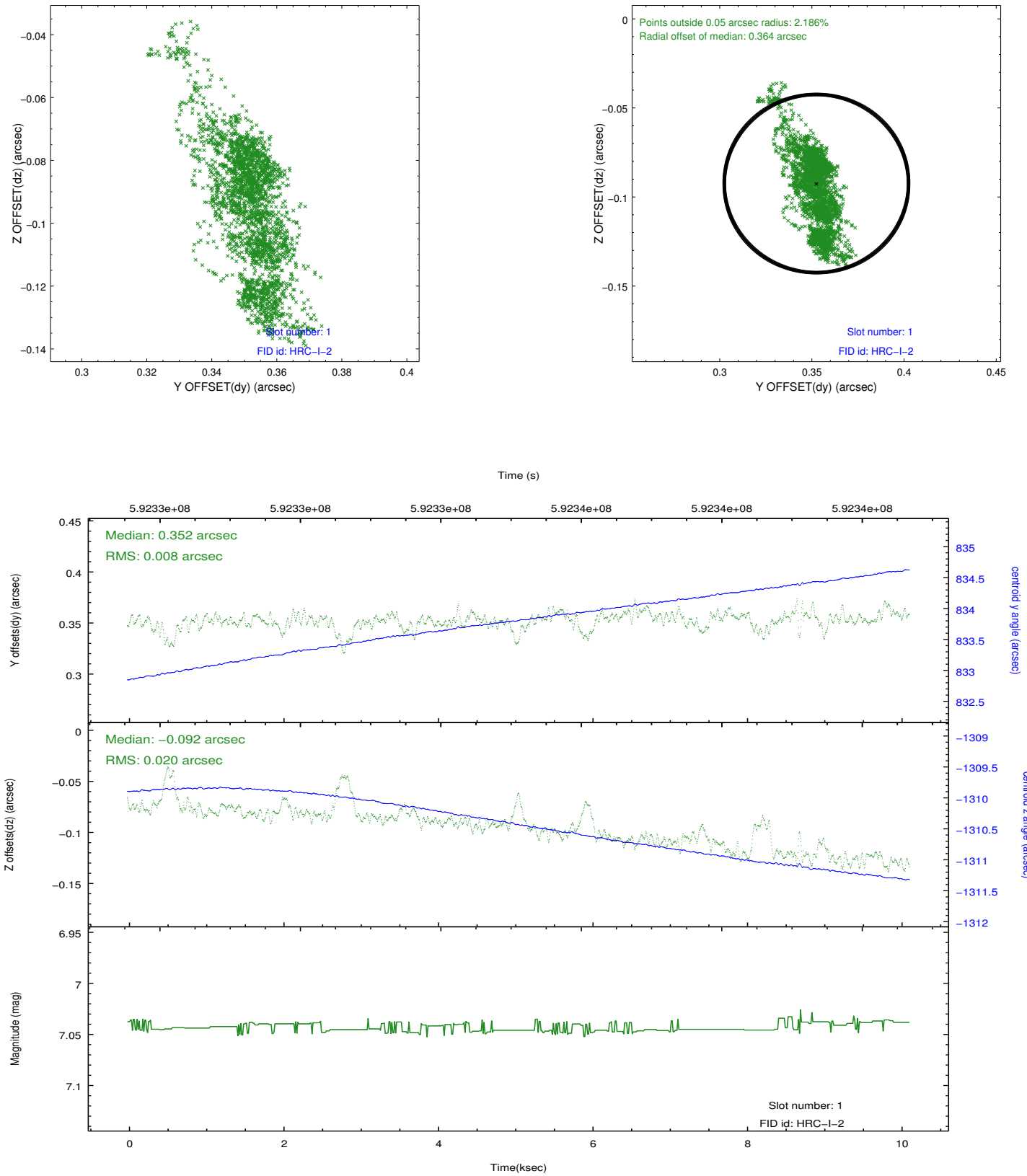


2.5 FID Slots

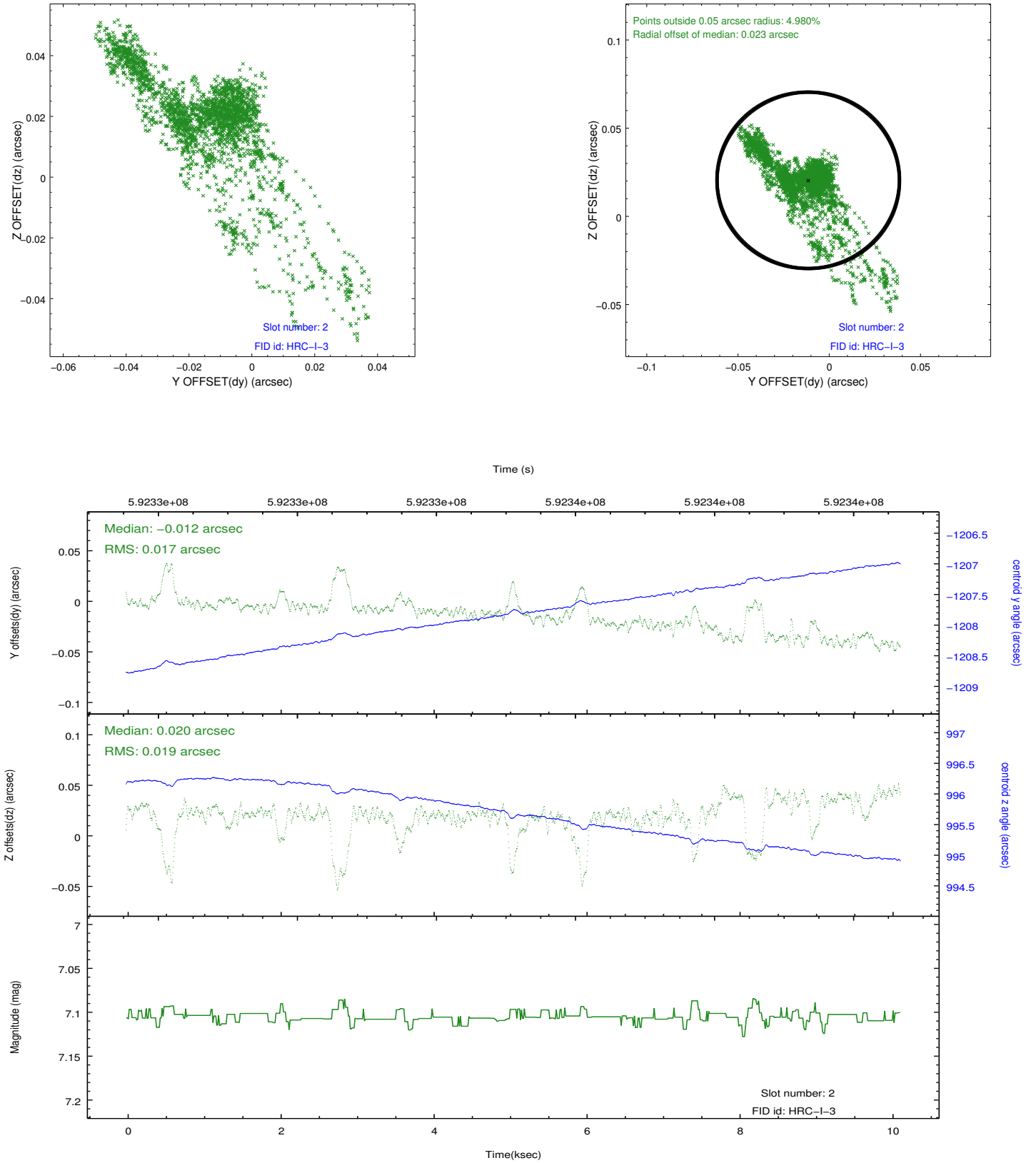
2.5.1 Slot 0



2.5.2 Slot 1



2.5.3 Slot 2



A Summary

A.1 Status

V&V Scientist	Jen Lauer
V&V Date (YYYY-MM-DD)	2016.10.10
V&V Edition	1
V&V Disposition and Status	OK
V&V Charge Time	10.122900583386

A.2 Comments

Joint Proposal: HST. Monitor constraint met.