

V&V Reference Report

L2 ASCDS Version : 10.3.3

Observation 17248 - L2 Version 1
Chandra X-Ray Center

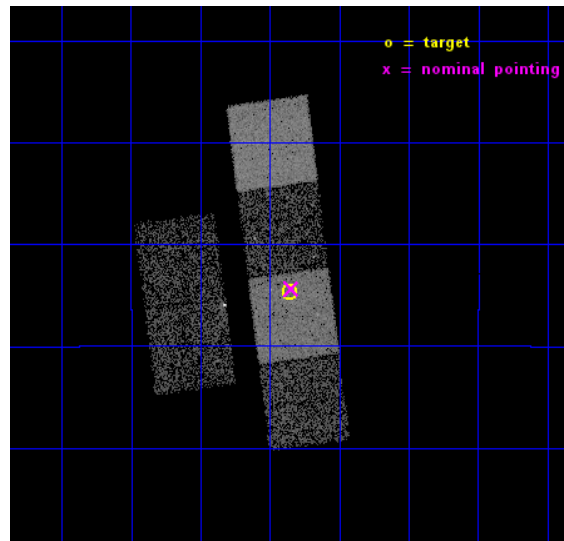
L2 Processing Date : Feb 14 2015

Contents

1	Front	2
2	OBI	3
2.1	OBI	3
2.1.1	Images	3
2.1.2	Bias	3
2.1.3	Parameters	4
2.1.4	Events	4
2.2	Compared Parameters	5
2.3	Aspect	6
2.4	Star Slots	9
2.4.1	Slot 3	9
2.4.2	Slot 4	10
2.4.3	Slot 5	11
2.4.4	Slot 6	12
2.4.5	Slot 7	13
2.5	FID Slots	14
2.5.1	Slot 0	14
2.5.2	Slot 1	15
2.5.3	Slot 2	16
A	Summary	17
A.1	Status	17
A.2	Comments	17

1 Front

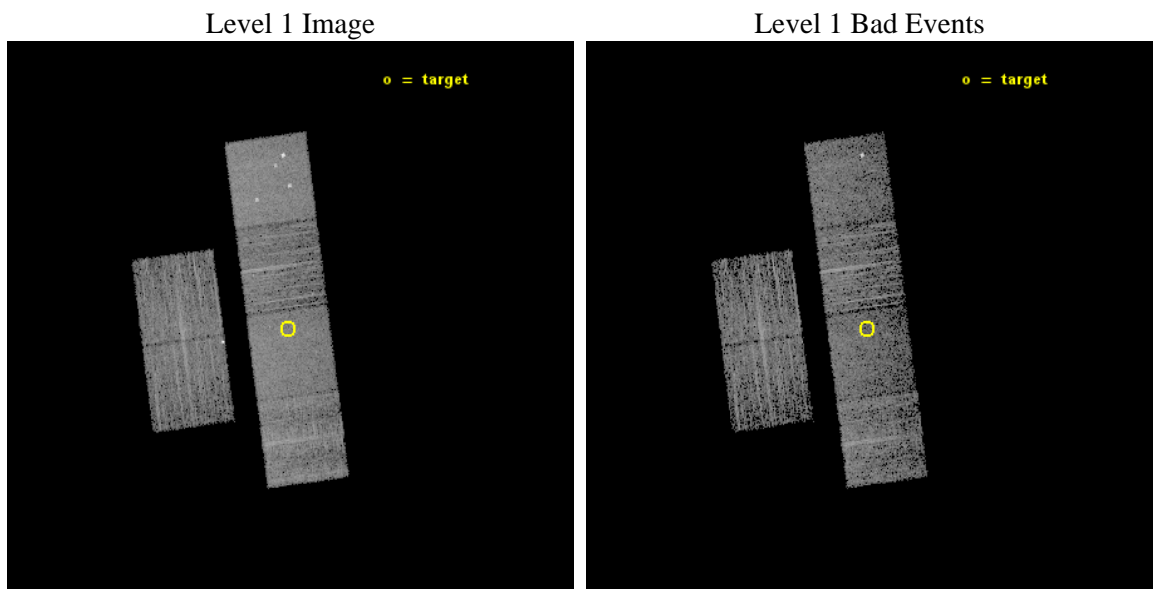
seq_num	901144	Sequence number
obs_id	17248	Observation id
title	Follow-up of Serendipitous NuSTAR Sources in the Galactic Plane	Pr
observer	Dr. John Tomsick	Principal investigator
object	3XMM J172751.4-141439	Source name
dtcycle	0	
cycle	P	events from which exps? Prim/Second/Both
ra_targ	261.964167	Observer's specified target RA [deg]
dec_targ	-14.244306	Observer's specified target Dec [deg]
ra_nom	261.96125220629	Nominal RA [deg]
dec_nom	-14.239683200246	Nominal Dec [deg]
roll_nom	82.35568928779	Nominal Roll [deg]
revision	1	Processing version of data
ontime	5951.4853703976	Sum of GTIs [s]
livetime	5876.1240790833	Livetime [s]
ontime2	5951.5264103413	Sum of GTIs [s]
ontime3	5951.3622503281	Sum of GTIs [s]
ontime5	5951.4443303347	Sum of GTIs [s]
ontime6	5951.403290391	Sum of GTIs [s]
ontime7	5951.4853703976	Sum of GTIs [s]
ontime8	5951.3212103844	Sum of GTIs [s]
l2events	55389	Number of level 2 events



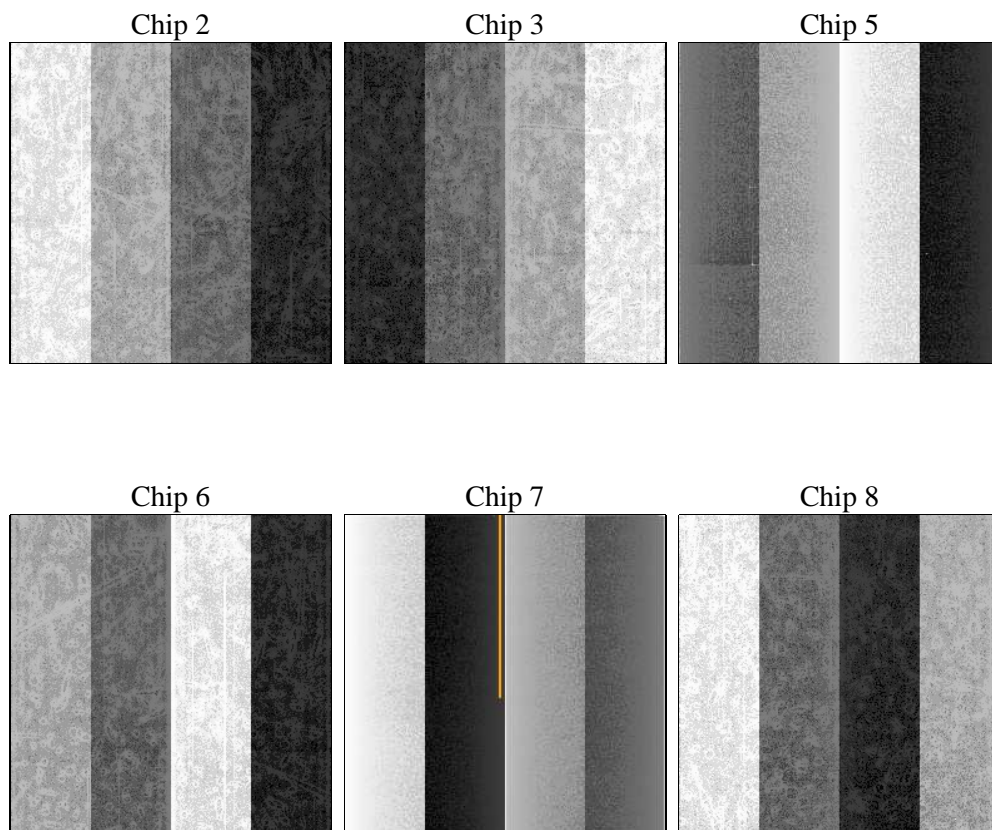
2 OBI

2.1 OBI

2.1.1 Images



2.1.2 Bias



2.1.3 Parameters

obi_num	1	Obi number	sched_exp_time	6000.000000	[s] Scheduled observation exposure time
ascdsver	10.3.3	Processing system revision	ontime	5951.4853703976	Sum of GTIs [s]
caldsver	4.6.6	 	ontime2	5951.5264103413	Sum of GTIs [s]
date	2015-02-15T02:19:44	Date and time of file creation	ontime3	5951.3622503281	Sum of GTIs [s]
revision	1	Processing version of data	ontime5	5951.4443303347	Sum of GTIs [s]
			ontime6	5951.403290391	Sum of GTIs [s]
			ontime7	5951.4853703976	Sum of GTIs [s]
			ontime8	5951.3212103844	Sum of GTIs [s]
			l1events	233769	Number of level 1 events

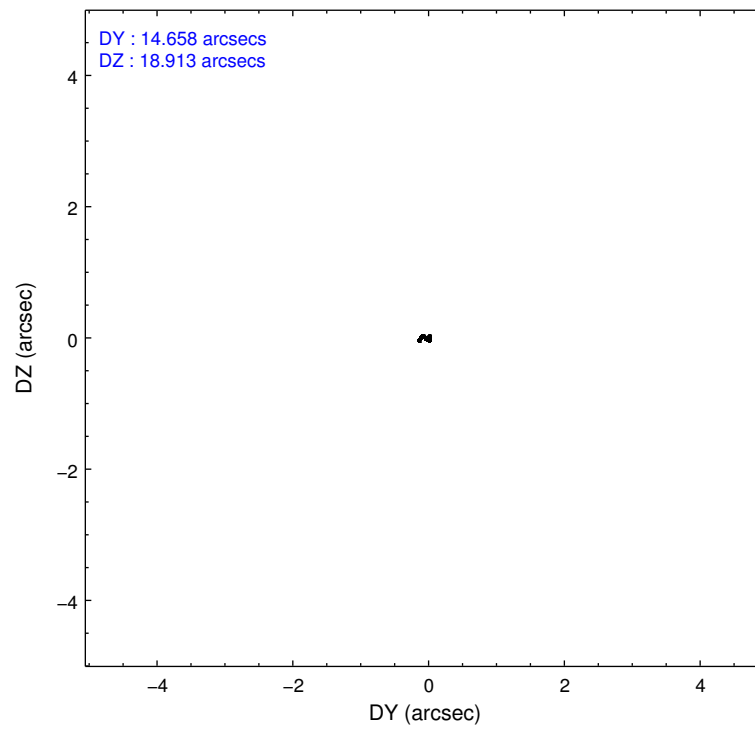
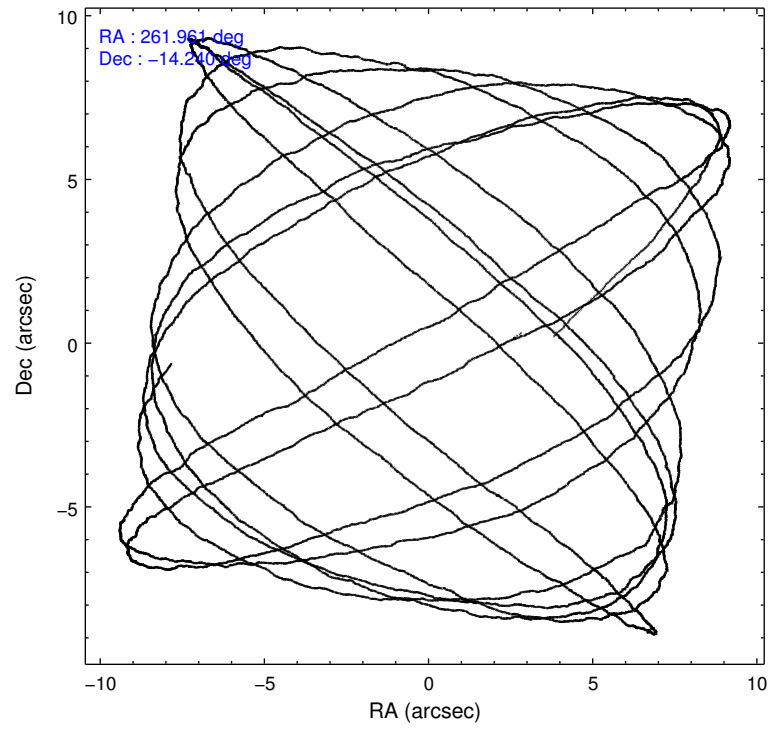
2.1.4 Events

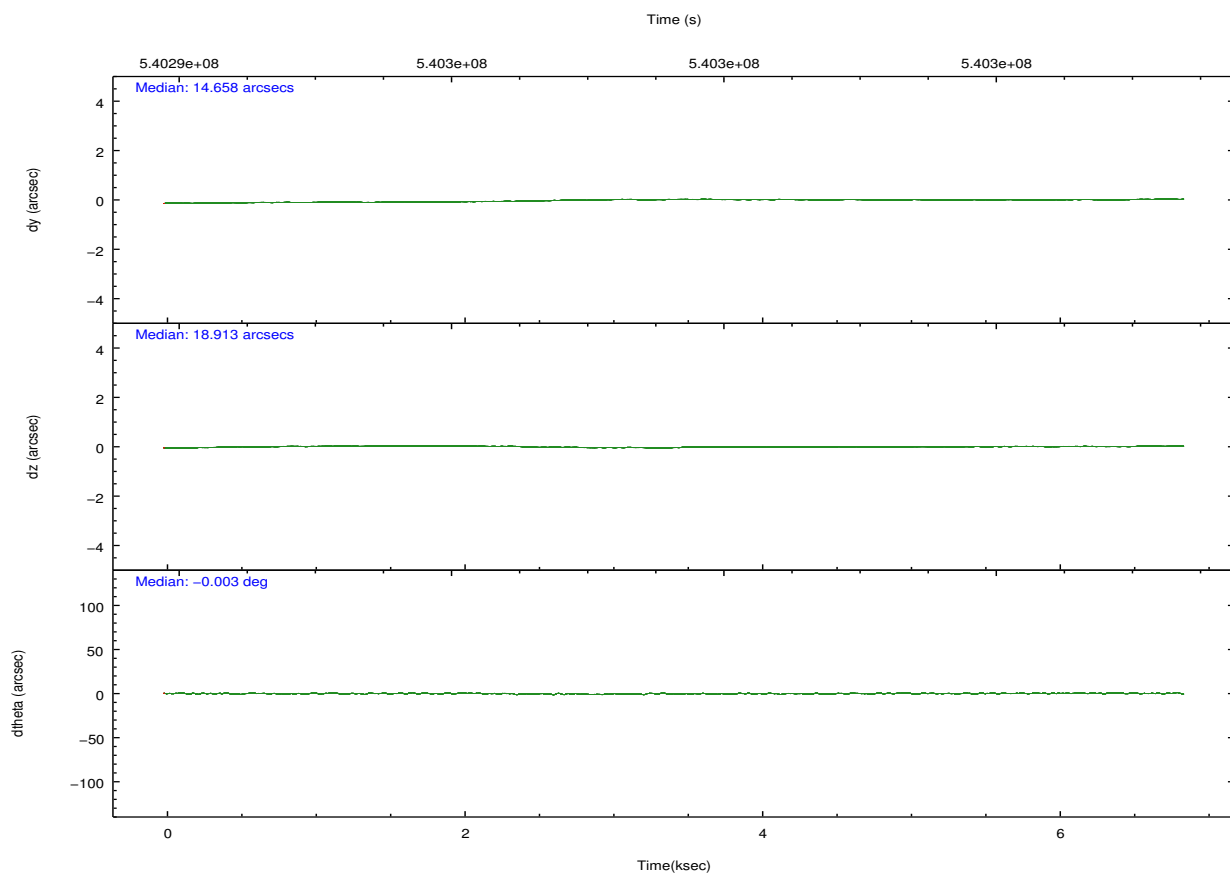
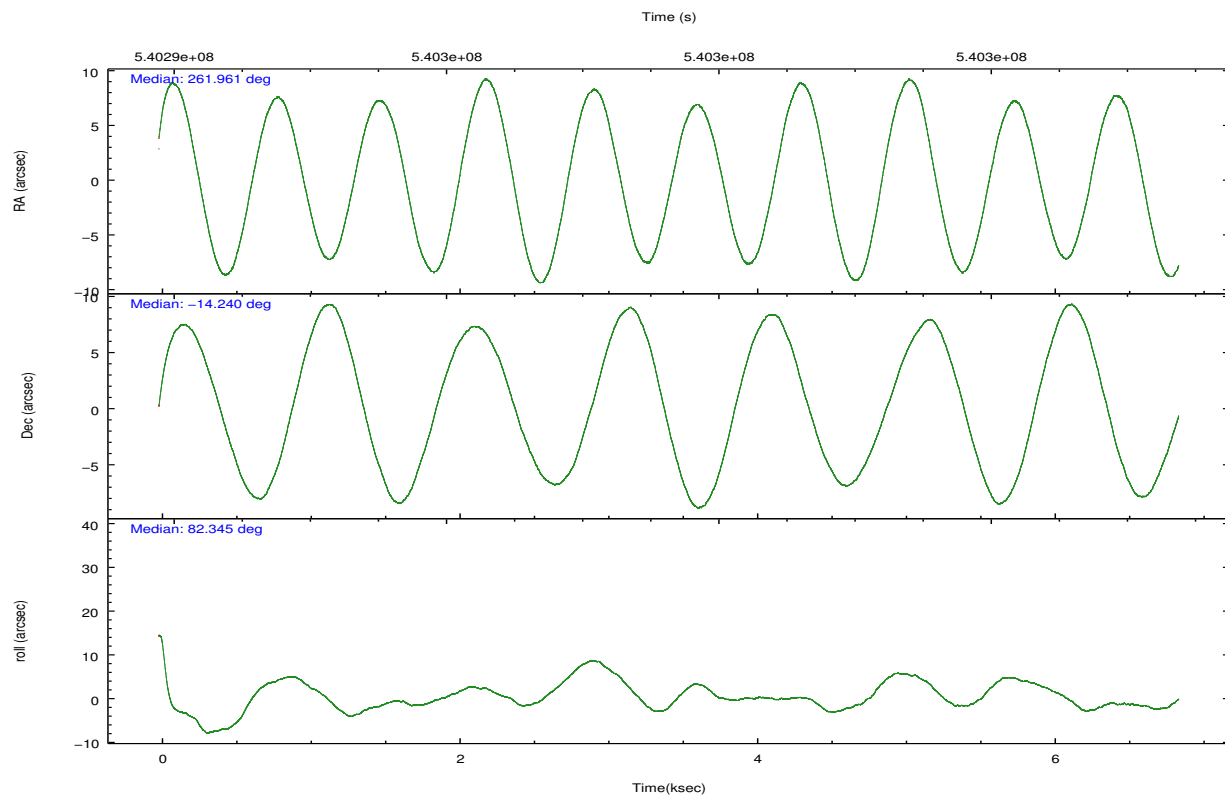
	ccd 2	ccd 3	ccd 5	ccd 6	ccd 7	ccd 8		ccd 2	ccd 3	ccd 5	ccd 6	ccd 7	ccd 8
level 1 events	33040	31877	53228	32746	41310	41568	grade 0 events	1352	2498	3507	1547	1665	3246
rejected events	29474	26893	26739	28731	23243	30184		4%	7%	6%	4%	4%	7%
rejected %	89%	84%	50%	87%	56%	72%	grade 1 events	21	38	92	17	61	33
								0%	0%	0%	0%	0%	0%
							grade 2 events	834	948	8232	888	3729	2756
								2%	2%	15%	2%	9%	6%
							grade 3 events	358	373	783	351	1486	1109
								1%	1%	1%	1%	3%	2%
							grade 4 events	352	414	804	383	1459	1017
								1%	1%	1%	1%	3%	2%
							grade 5 events	1423	1546	4089	1505	4207	2279
								4%	4%	7%	4%	10%	5%
							grade 6 events	676	760	13193	852	9746	3266
								2%	2%	24%	2%	23%	7%
							grade 7 events	28024	25300	22528	27203	18957	27862
								84%	79%	42%	83%	45%	67%

2.2 Compared Parameters

Parameter	Planned	Actual	Parameter	Planned	Actual
Instrument	ACIS	ACIS	Obspar format version number	7	7
Detector	ACIS-235678	ACIS-235678	Obspar file type	PREDICTED	ACTUAL
Grating	NONE	NONE	Obspar update status	NONE	UPDATED
Data mode	VFAINT	VFAINT	CCD I0 on	N	N
Observation mode	POINTING	POINTING	CCD I1 on	N	N
[deg] Pointing RA	261.972363	261.9612522062917	CCD I2 on	O2	Y
[deg] Pointing Dec	-14.264906	-14.23968320024591	CCD I3 on	Y	Y
[deg] Pointing Roll	82.201777	82.35568928779013	CCD S0 on	N	N
[mm] SIM focus pos	-0.684267	-0.6828225247311905	CCD S1 on	O1	Y
[mm] SIM defocus	0	0.001444936568705701	CCD S2 on	Y	Y
[mm] SIM translation stage pos	-190.132523	-190.1400660498719	CCD S3 on	Y	Y
[mm] SIM translation stage offset	0	0.00754346686406393	CCD S4 on	Y	Y
[s] Observation start time (MET)	540295038.184000	540293598.97866	CCD S5 on	N	N
Observation start date	2015-02-14T09:56:11	2015-02-14T09:33:18	Number of optional ACIS chips dropped	0	0
[s] Observation end time (MET)	540301038.184000	540302048.05413	On-chip summing requested	N	N
Observation end date	2015-02-14T11:36:11	2015-02-14T11:54:08	Subarray requested	NONE	NONE
Read mode	TIMED	TIMED	Alternating exposures requested	N	N
			[s] Primary exposure time	0.000000	3.2

2.3 Aspect



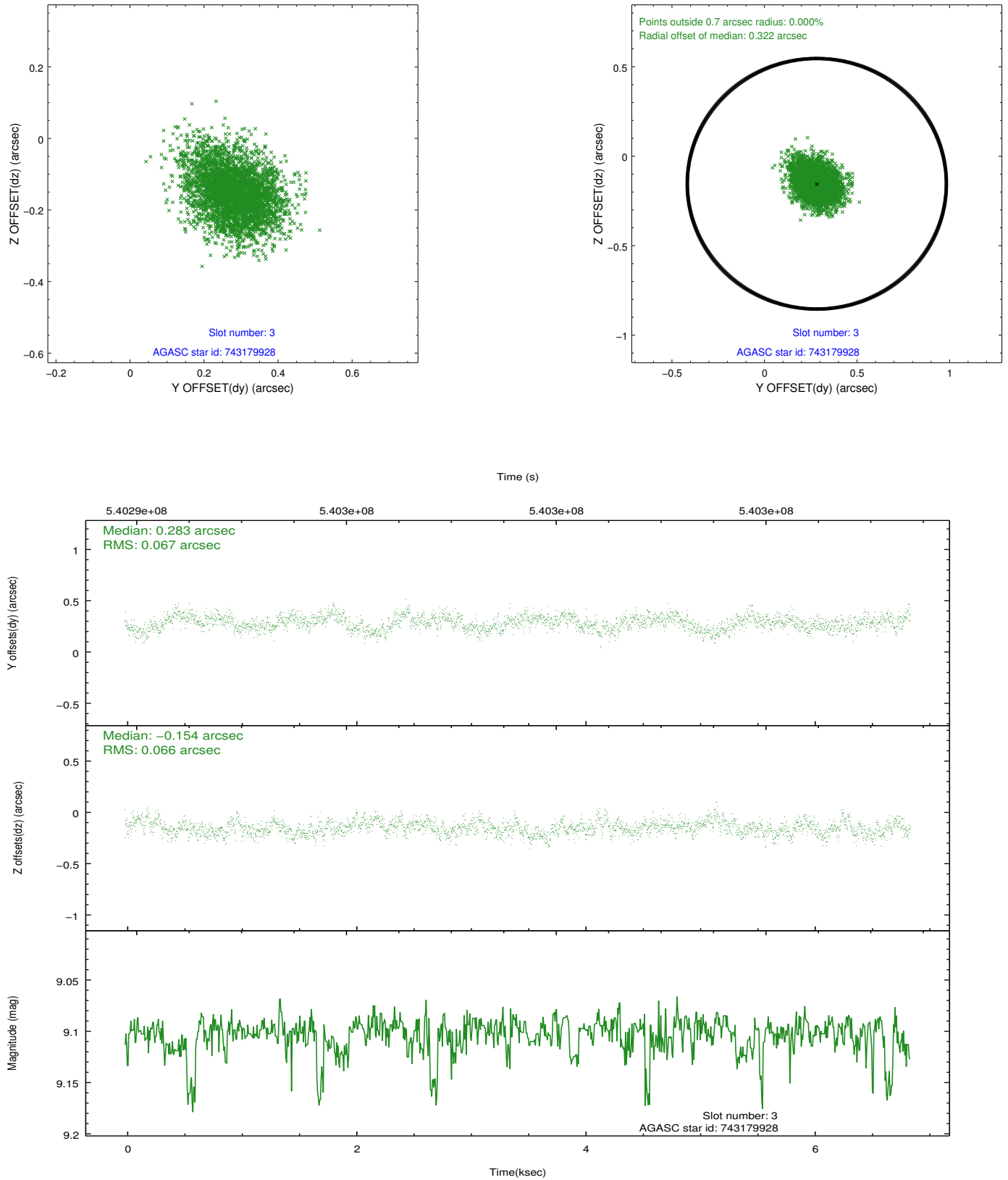


Slot Statistics

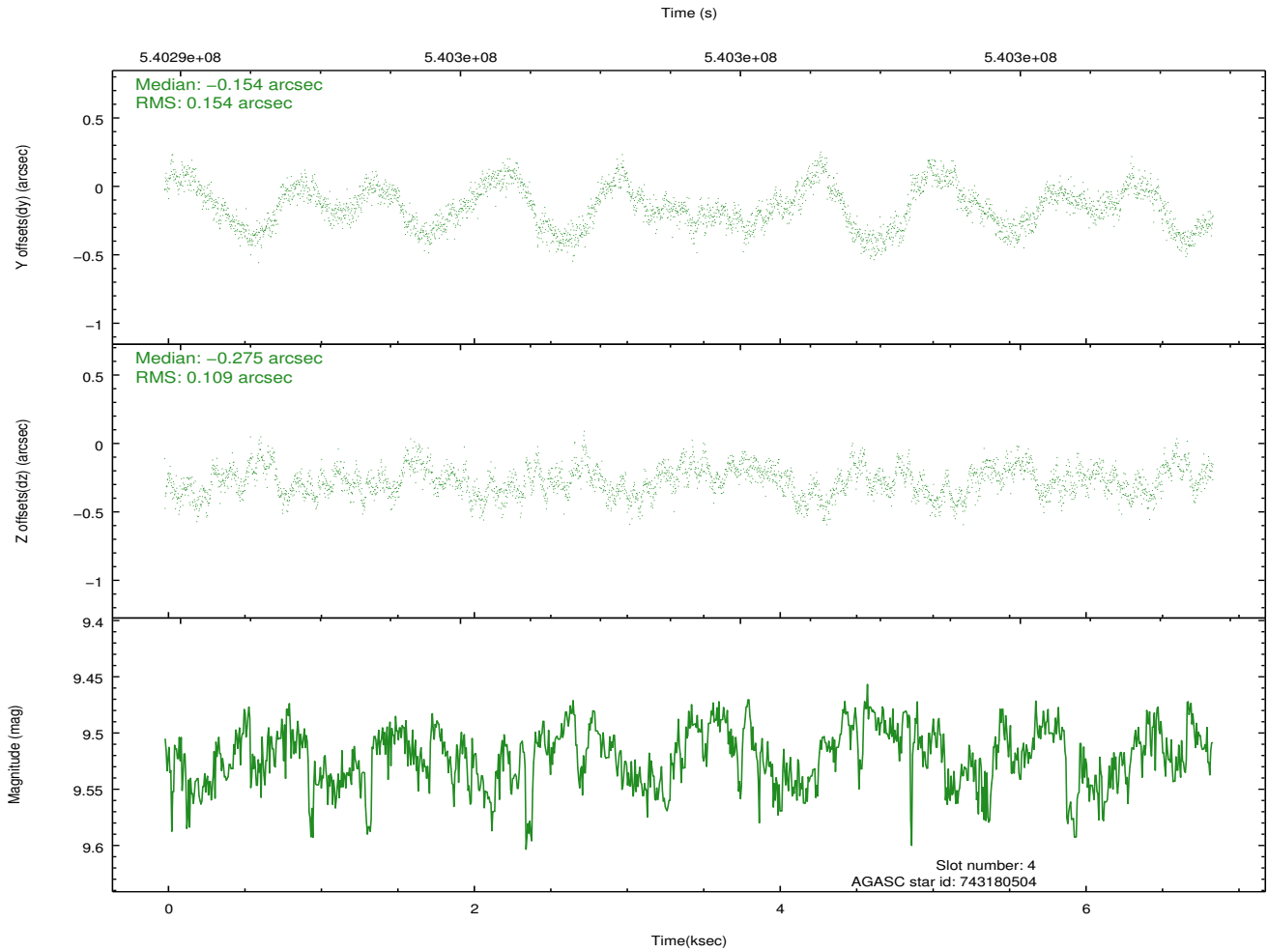
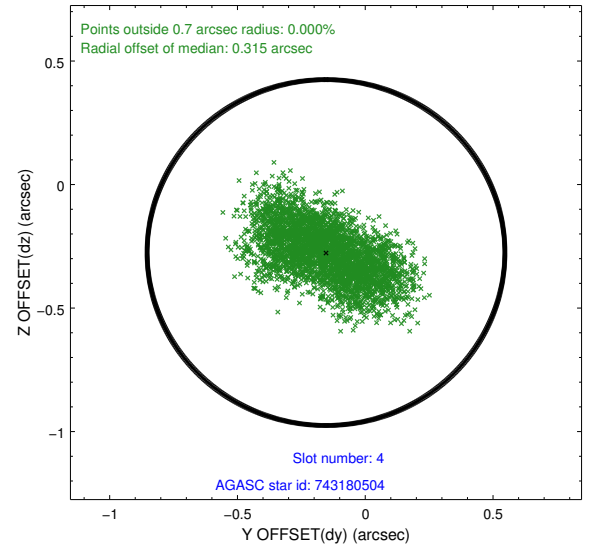
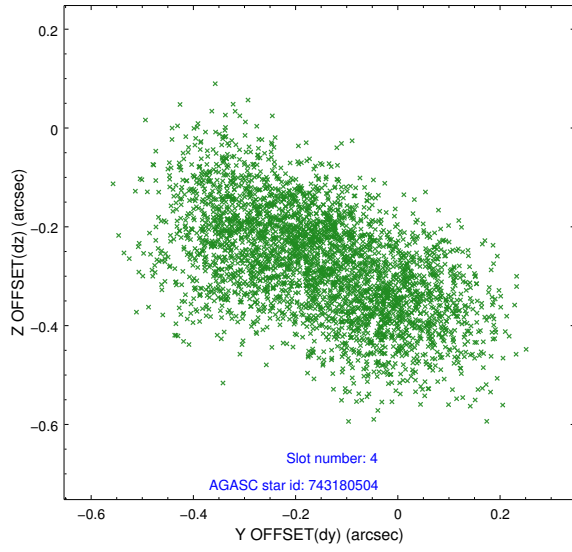
slot	status	used	id	mag	n_pts	med_dy	med_dz	dr1	dr2	ra	dec	mean_y	mean_z
0	FID		ACIS-S-2	7.11	1672	-0.099	-0.079	0.007	0.011	0.000000	0.000000	-767.71	-1740.46
1	FID		ACIS-S-4	7.20	1672	0.323	0.069	0.005	0.009	0.000000	0.000000	2145.63	167.25
2	FID		ACIS-S-5	7.23	1672	-0.254	0.018	0.007	0.011	0.000000	0.000000	-1819.60	161.88
3	GUIDE	used	743179928	9.10	3343	0.283	-0.154	0.100	0.165	261.557910	-14.696387	-1736.33	1219.05
4	GUIDE	used	743180504	9.52	3342	-0.154	-0.275	0.205	0.320	261.852145	-14.035433	760.78	528.86
5	GUIDE	used	743184024	9.68	3337	0.169	-0.497	0.181	0.284	261.267832	-14.617546	-1595.15	2259.08
6	GUIDE	used	743184440	8.43	3344	-0.138	0.643	0.077	0.125	262.326597	-14.257885	191.77	-1219.58
7	GUIDE	used	743318832	9.61	3339	-0.170	0.279	0.137	0.219	262.487575	-14.178187	552.01	-1739.39

2.4 Star Slots

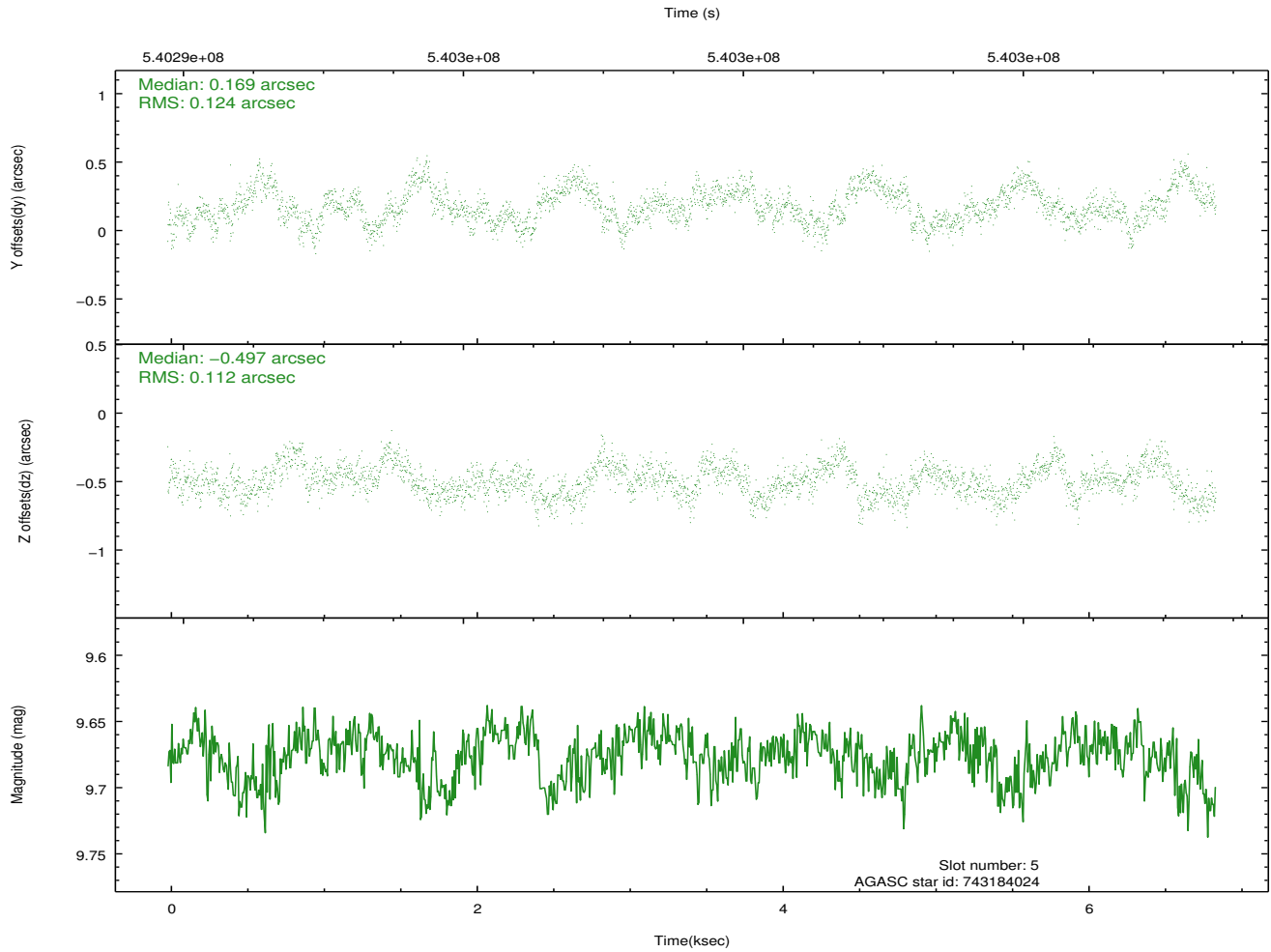
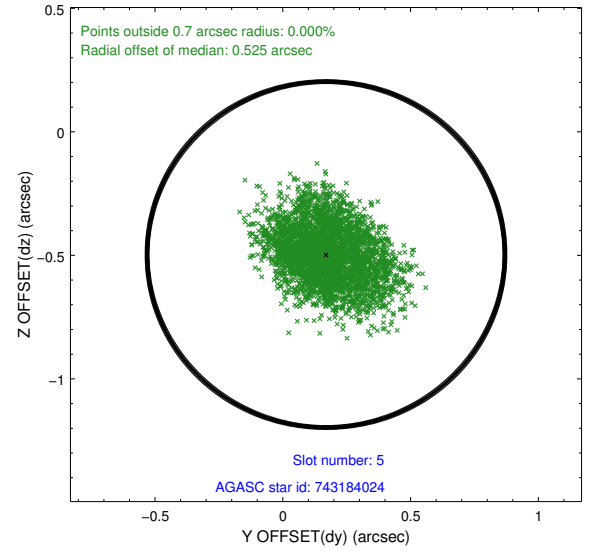
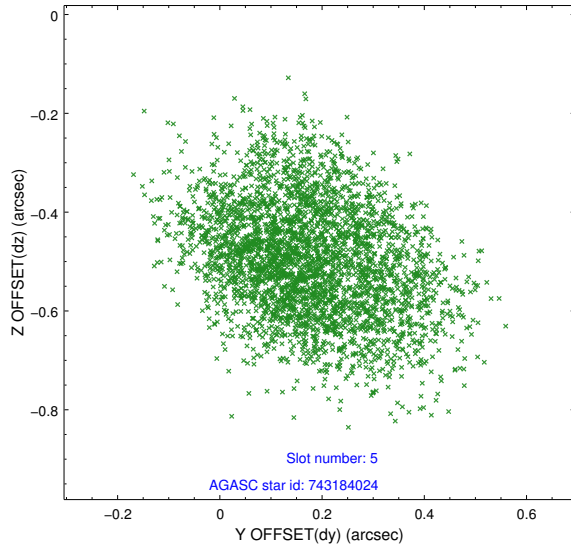
2.4.1 Slot 3



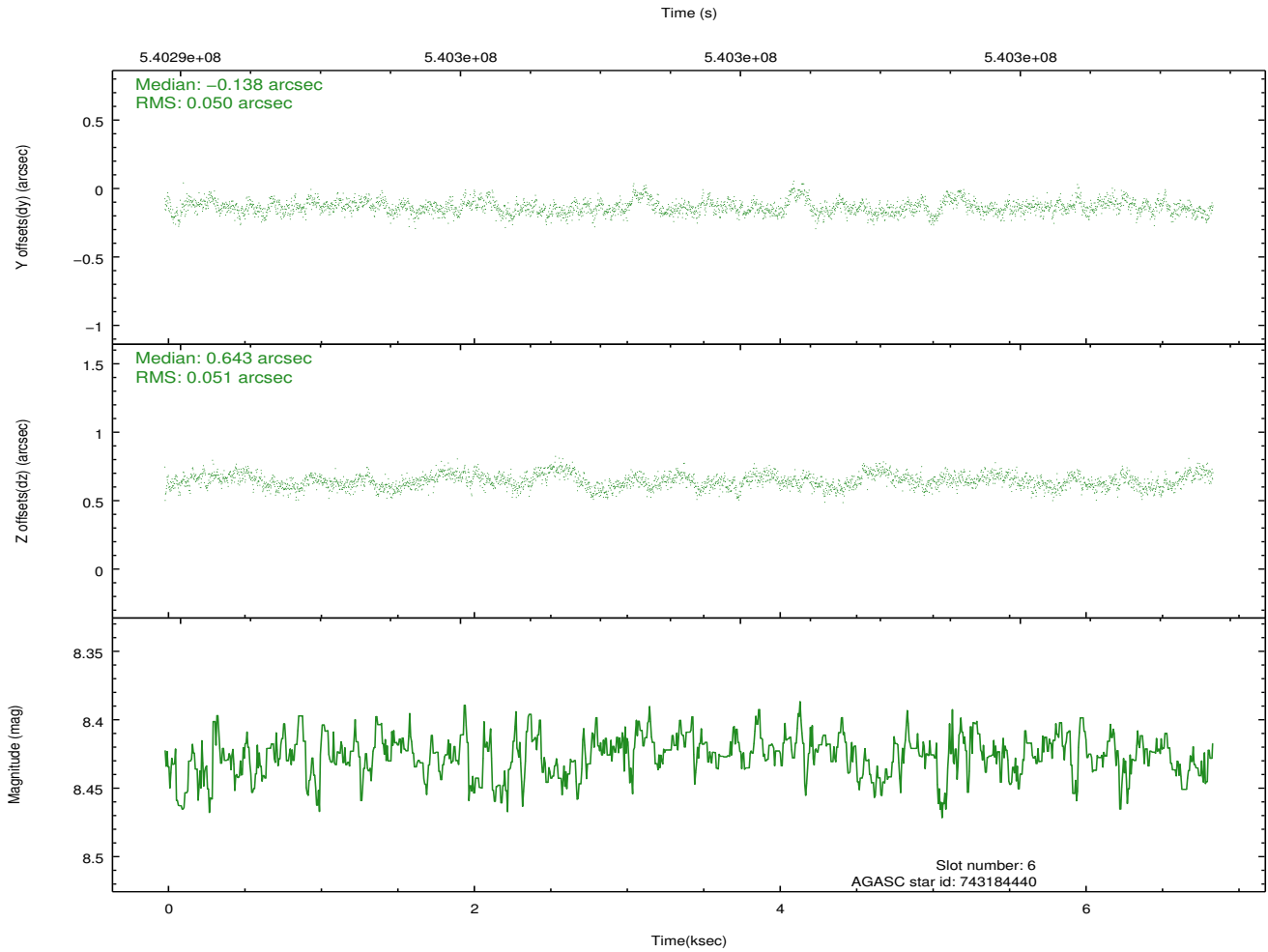
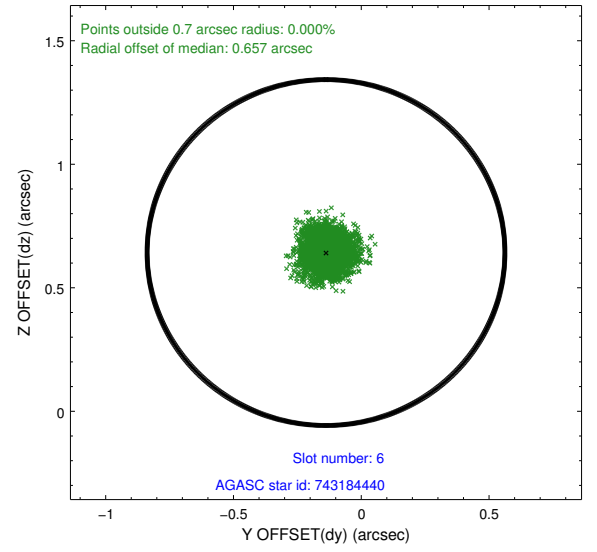
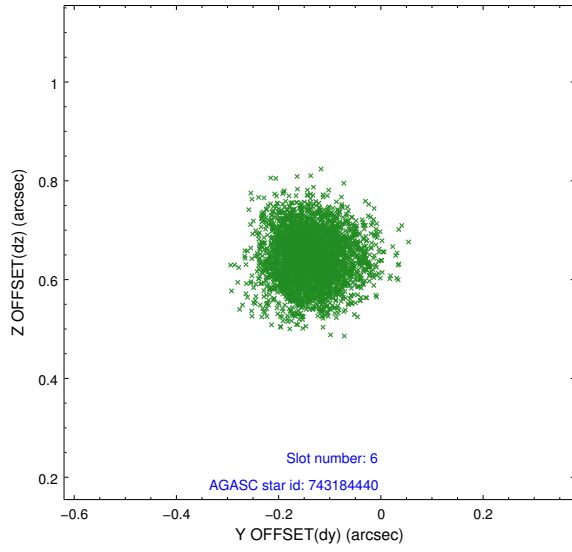
2.4.2 Slot 4



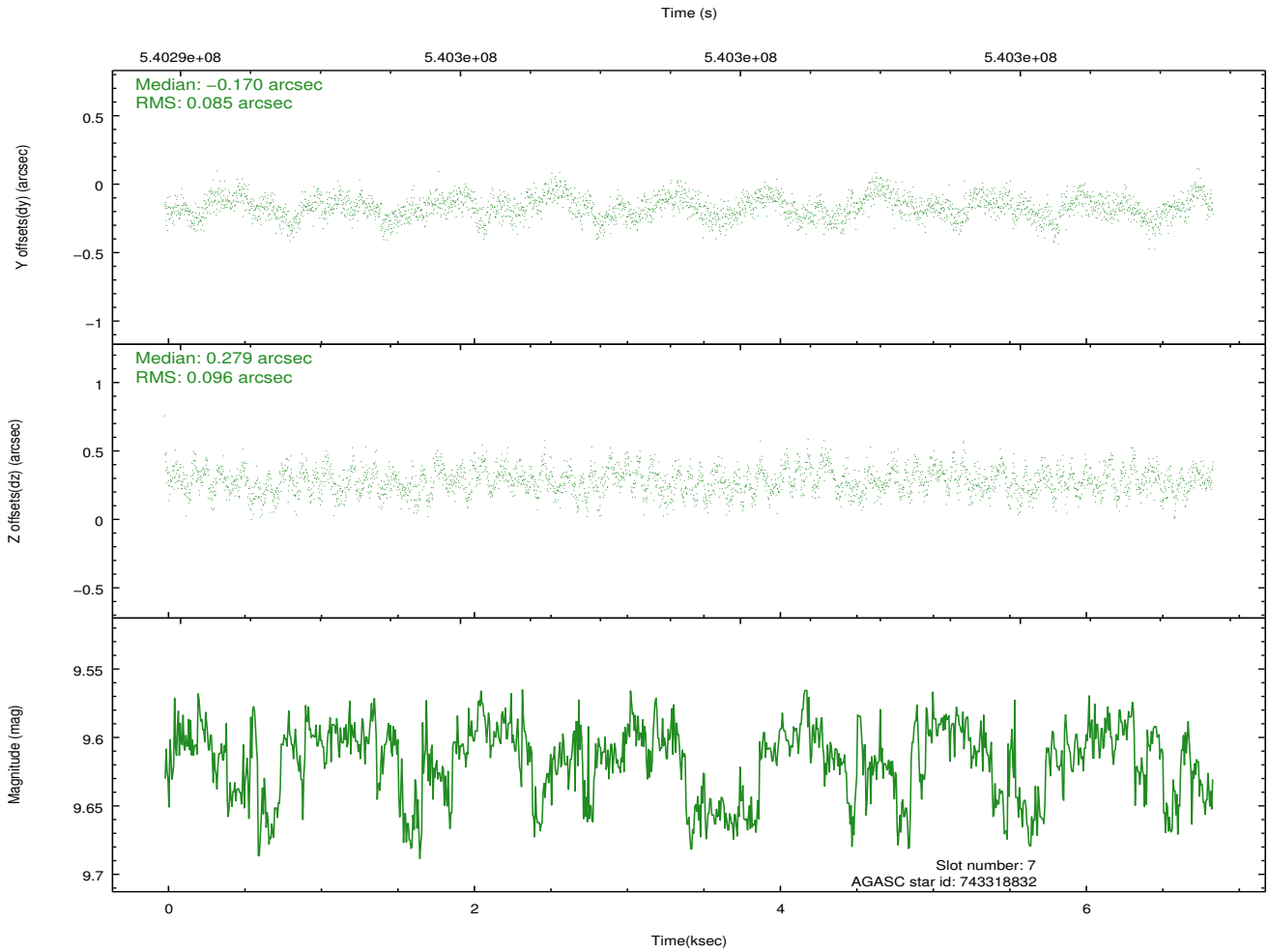
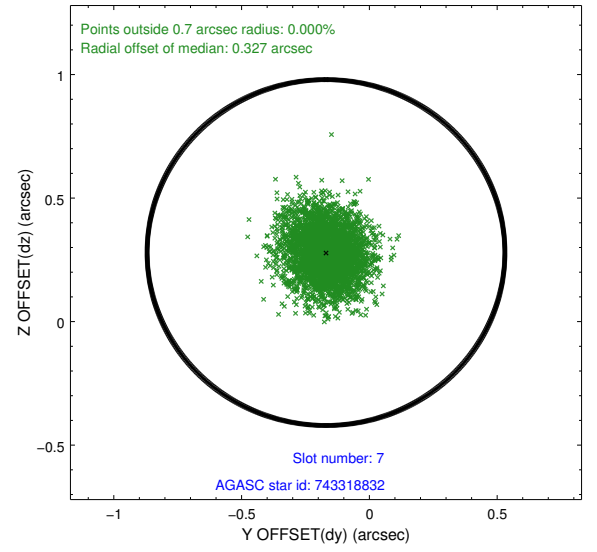
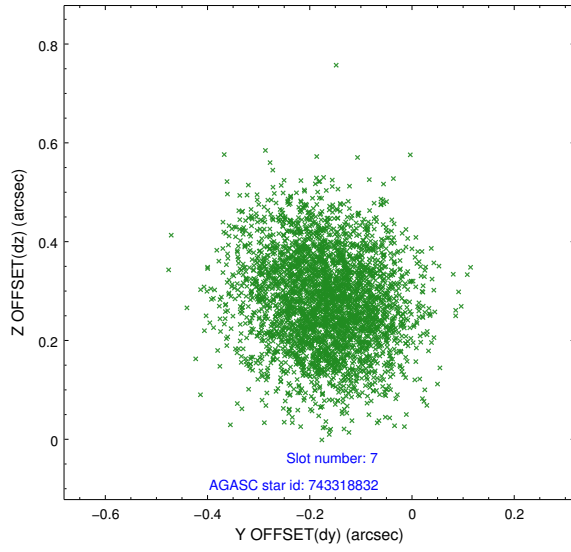
2.4.3 Slot 5



2.4.4 Slot 6

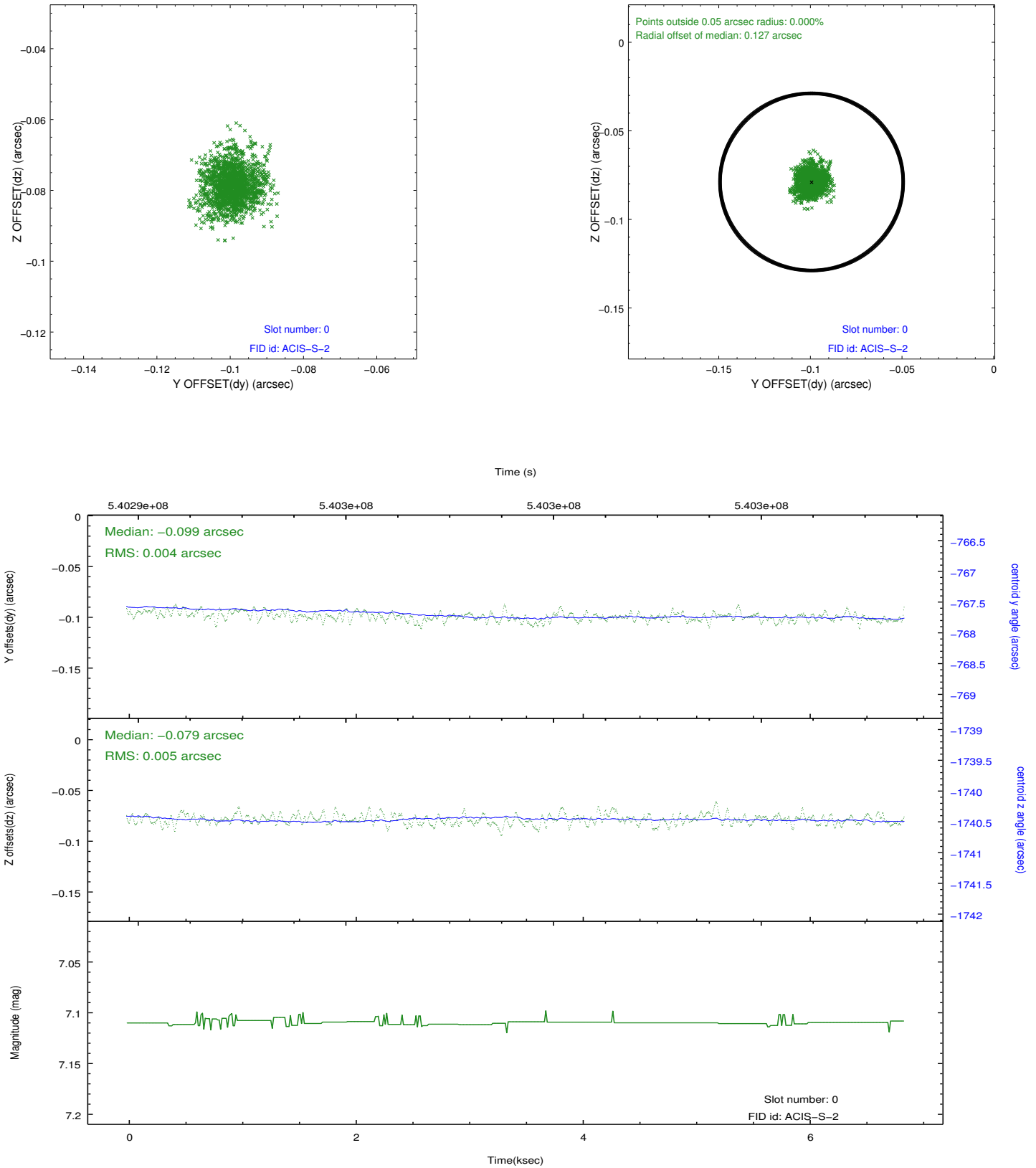


2.4.5 Slot 7

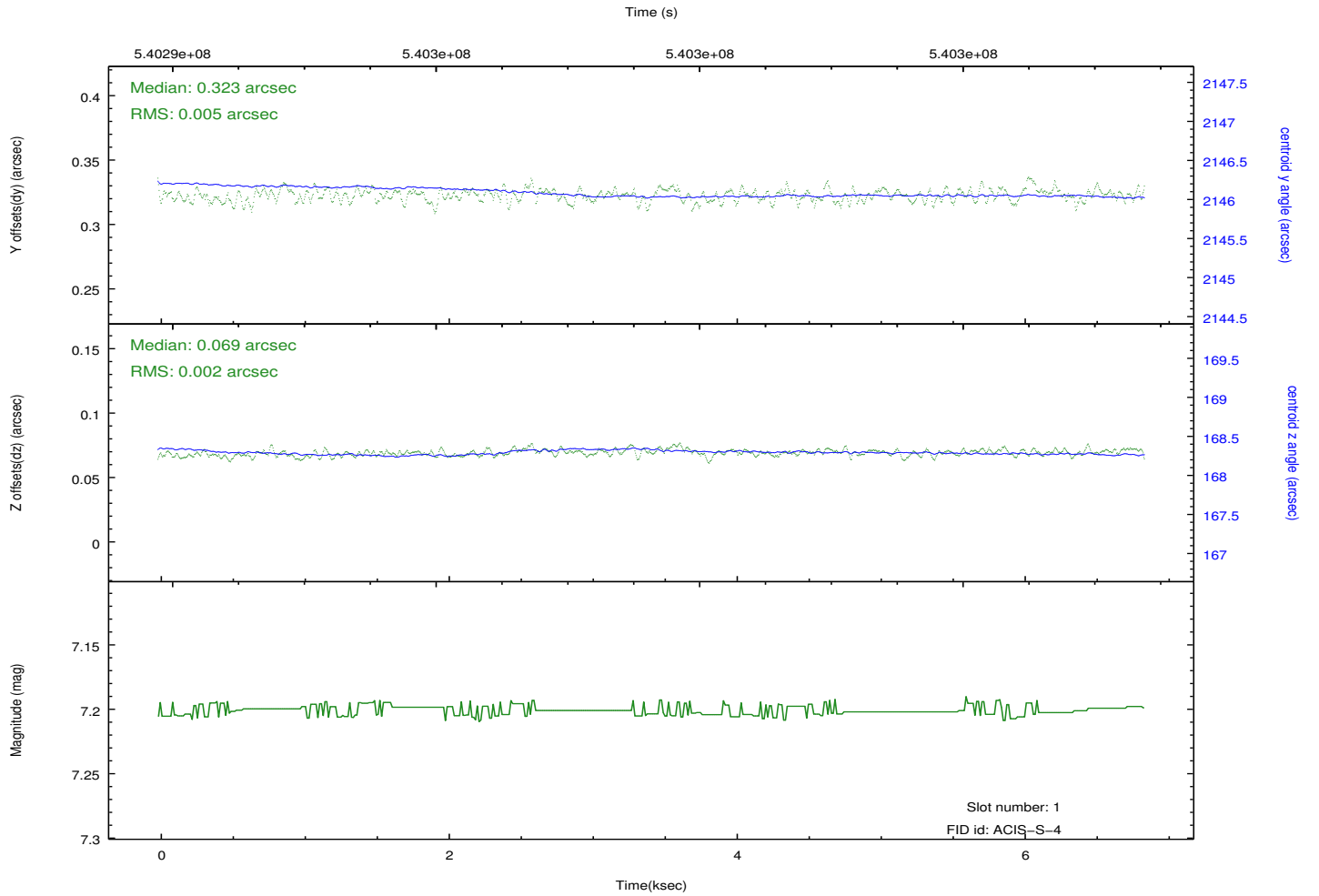
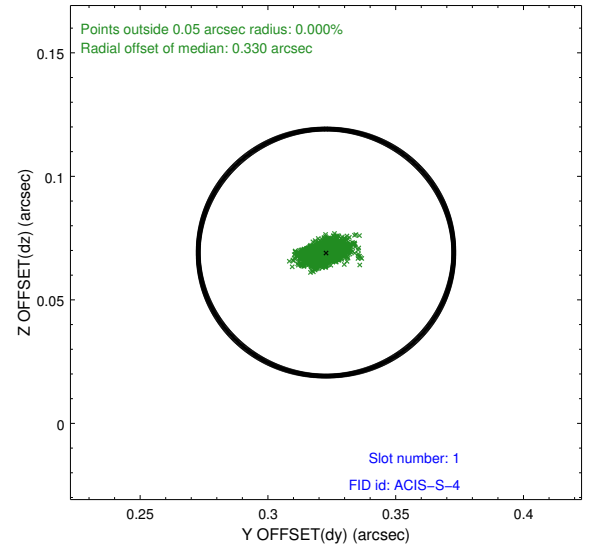
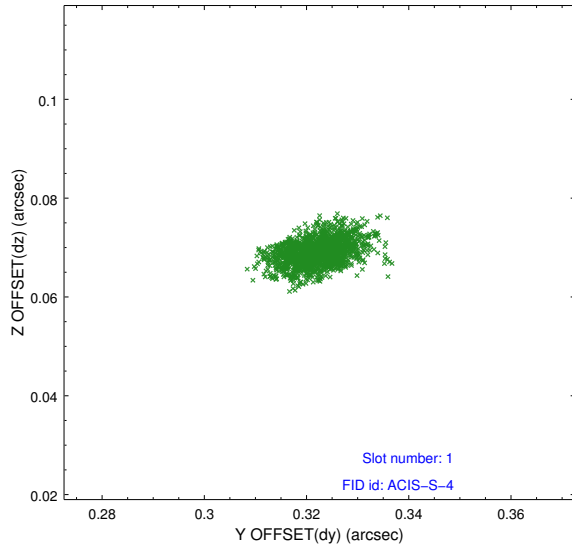


2.5 FID Slots

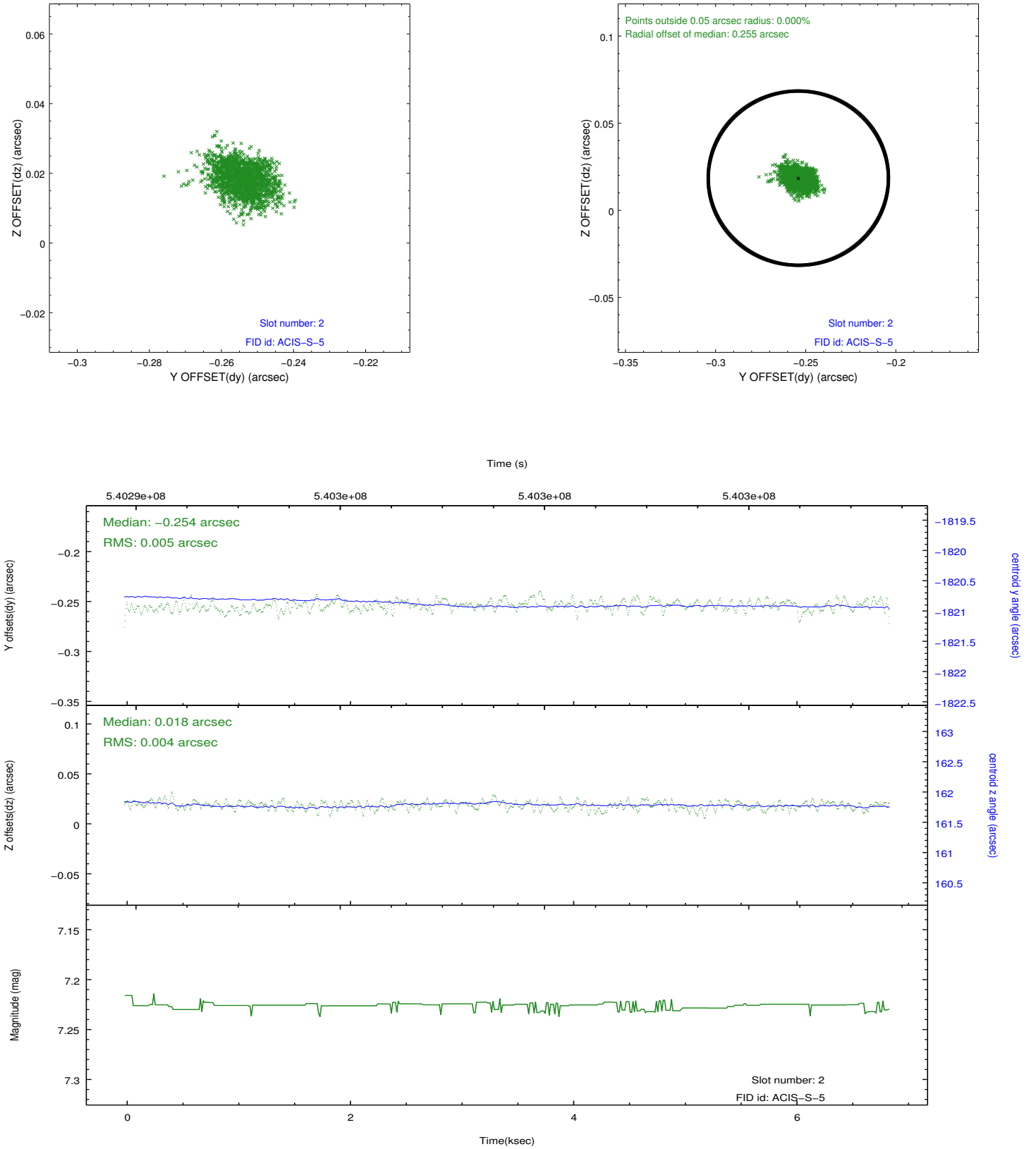
2.5.1 Slot 0



2.5.2 Slot 1



2.5.3 Slot 2



A Summary

A.1 Status

V&V Scientist	Beth Sundheim
V&V Date (YYYY-MM-DD)	2015.02.15
V&V Edition	1
V&V Disposition and Status	OK
V&V Charge Time	5.9514853703976

A.2 Comments