

V&V Reference Report

L2 ASCDS Version : 10.4.3.1

Observation 17498 - L2 Version 1
Chandra X-Ray Center

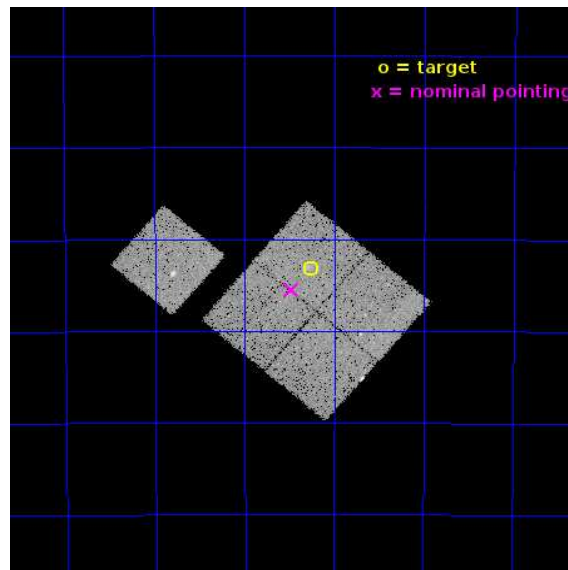
L2 Processing Date : Feb 15 2016

Contents

1	Front	2
2	OBI	3
2.1	OBI	3
2.1.1	Images	3
2.1.2	Bias	3
2.1.3	Parameters	4
2.1.4	Events	4
2.2	Compared Parameters	5
2.3	Aspect	6
2.4	Star Slots	9
2.4.1	Slot 3	9
2.4.2	Slot 4	10
2.4.3	Slot 5	11
2.4.4	Slot 6	12
2.4.5	Slot 7	13
2.5	FID Slots	14
2.5.1	Slot 0	14
2.5.2	Slot 1	15
2.5.3	Slot 2	16
A	Summary	17
A.1	Status	17
A.2	Comments	17

1 Front

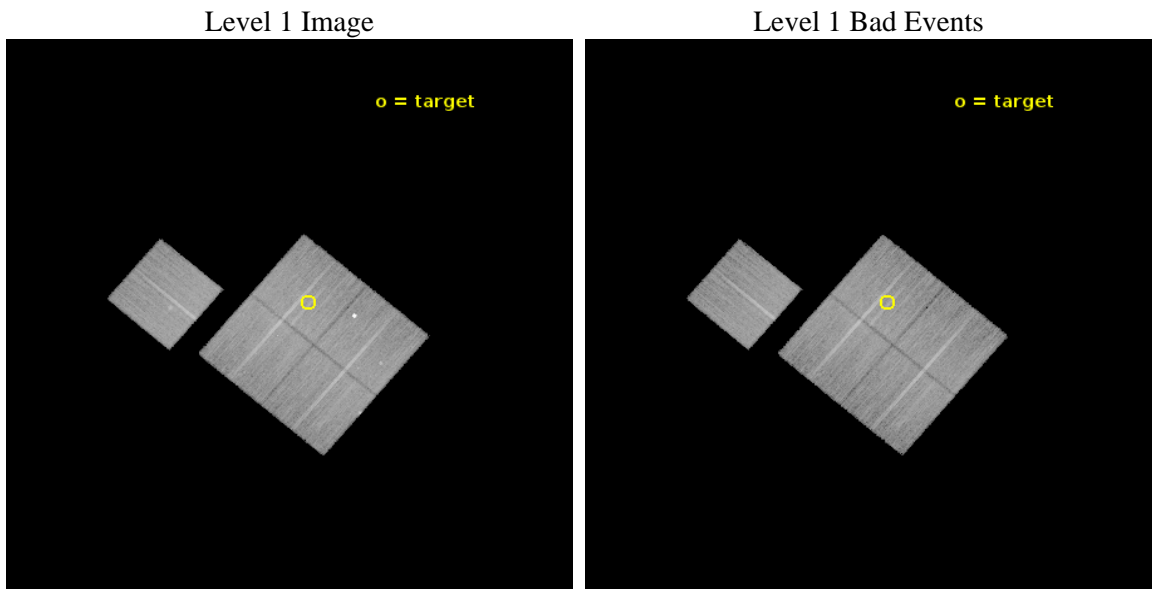
seq_num	801489	Sequence number
obs_id	17498	Observation id
title	A MASS-LIMITED SURVEY OF GALAXY CLUSTERS AT $1.2 < z < 1.7$: PROBING THE PHYSICS OF THE ICM DURING ITS ASSEMBLY	Proposal title
observer	Dr Michael McDonald	Principal investigator
object	SPT-CLJ0640-5113	Source name
dtcycle	0	
cycle	P	events from which exps? Prim/Second/Both
ra_targ	100.065	Observer's specified target RA [deg]
dec_targ	-51.220389	Observer's specified target Dec [deg]
ra_nom	100.11950817853	Nominal RA [deg]
dec_nom	-51.258489925833	Nominal Dec [deg]
roll_nom	310.25118015237	Nominal Roll [deg]
revision	1	Processing version of data
ontime	25054.159142494	Sum of GTIs [s]
livetime	24726.808108694	Livetime [s]
ontime0	25057.300192833	Sum of GTIs [s]
ontime1	25054.159152627	Sum of GTIs [s]
ontime2	25057.300192833	Sum of GTIs [s]
ontime3	25054.159142494	Sum of GTIs [s]
ontime6	25054.159172654	Sum of GTIs [s]
l2events	73285	Number of level 2 events



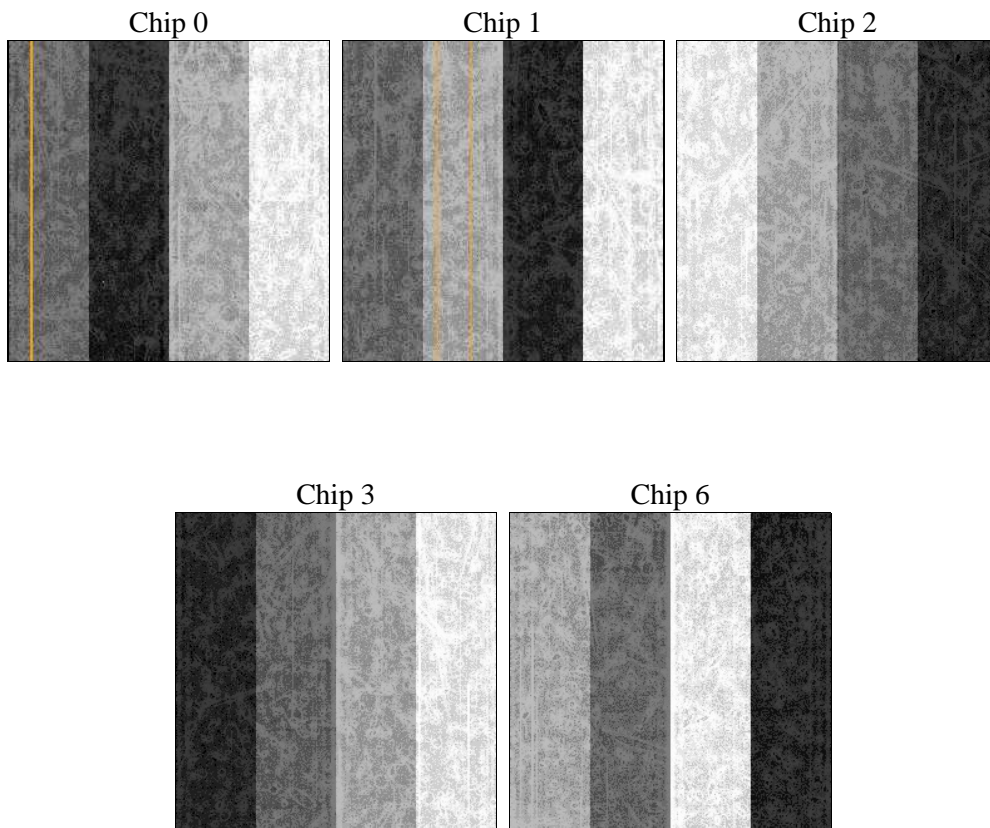
2 OBI

2.1 OBI

2.1.1 Images



2.1.2 Bias



2.1.3 Parameters

obi_num	0	Obi number	sched_exp_time	25000.000000	[s] Scheduled observation exposure time
ascdsver	10.4.3.1	Processing system revision	ontime	25054.159142494	Sum of GTIs [s]
caldbver	4.7.0	 	ontime0	25057.300192833	Sum of GTIs [s]
date	2016-02-16T02:19:52	Date and time of file creation	ontime1	25054.159152627	Sum of GTIs [s]
revision	1	Processing version of data	ontime2	25057.300192833	Sum of GTIs [s]
			ontime3	25054.159142494	Sum of GTIs [s]
			ontime6	25054.159172654	Sum of GTIs [s]
			l1events	748640	Number of level 1 events

2.1.4 Events

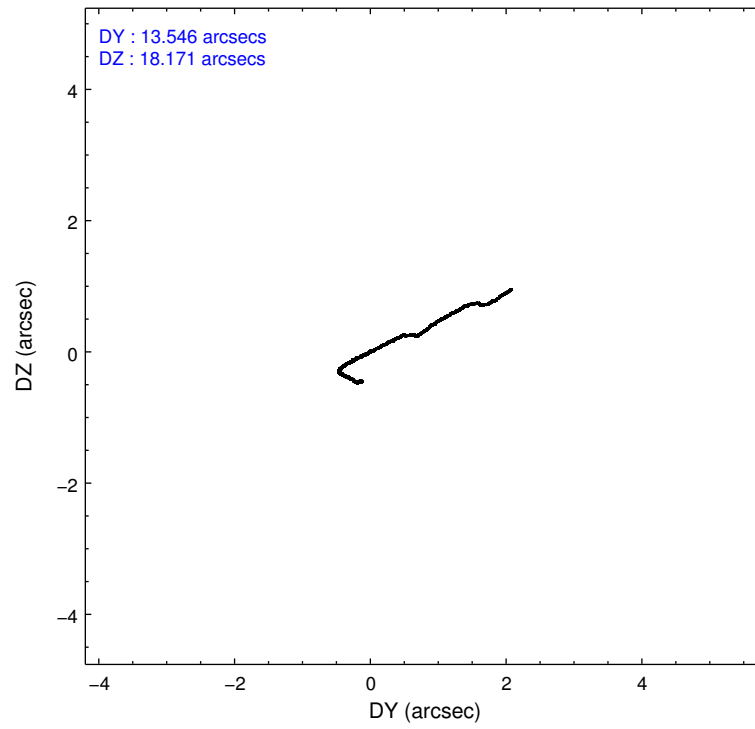
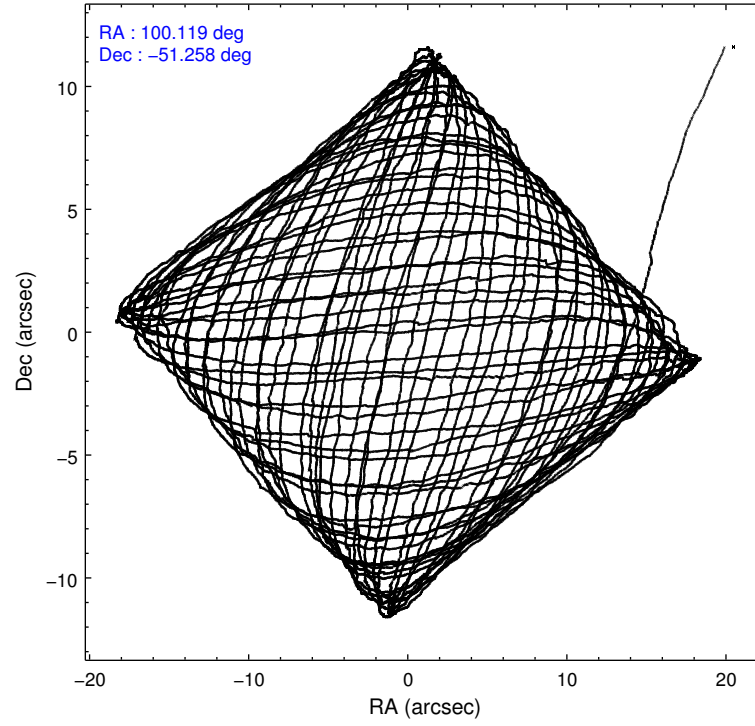
	ccd 0	ccd 1	ccd 2	ccd 3	ccd 6
level 1 events	139999	152010	150573	149950	156108
rejected events	122336	124950	133921	133984	138421
rejected %	87%	82%	88%	89%	88%

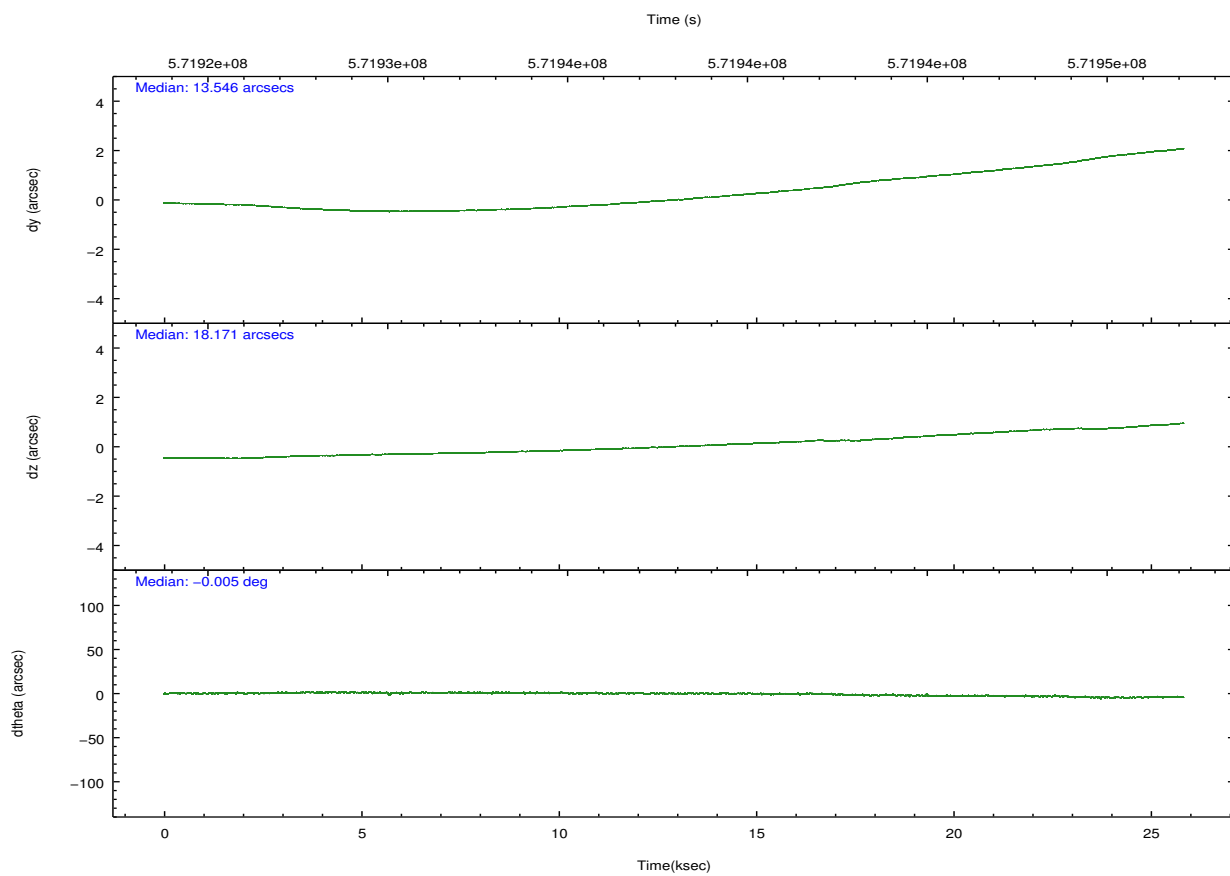
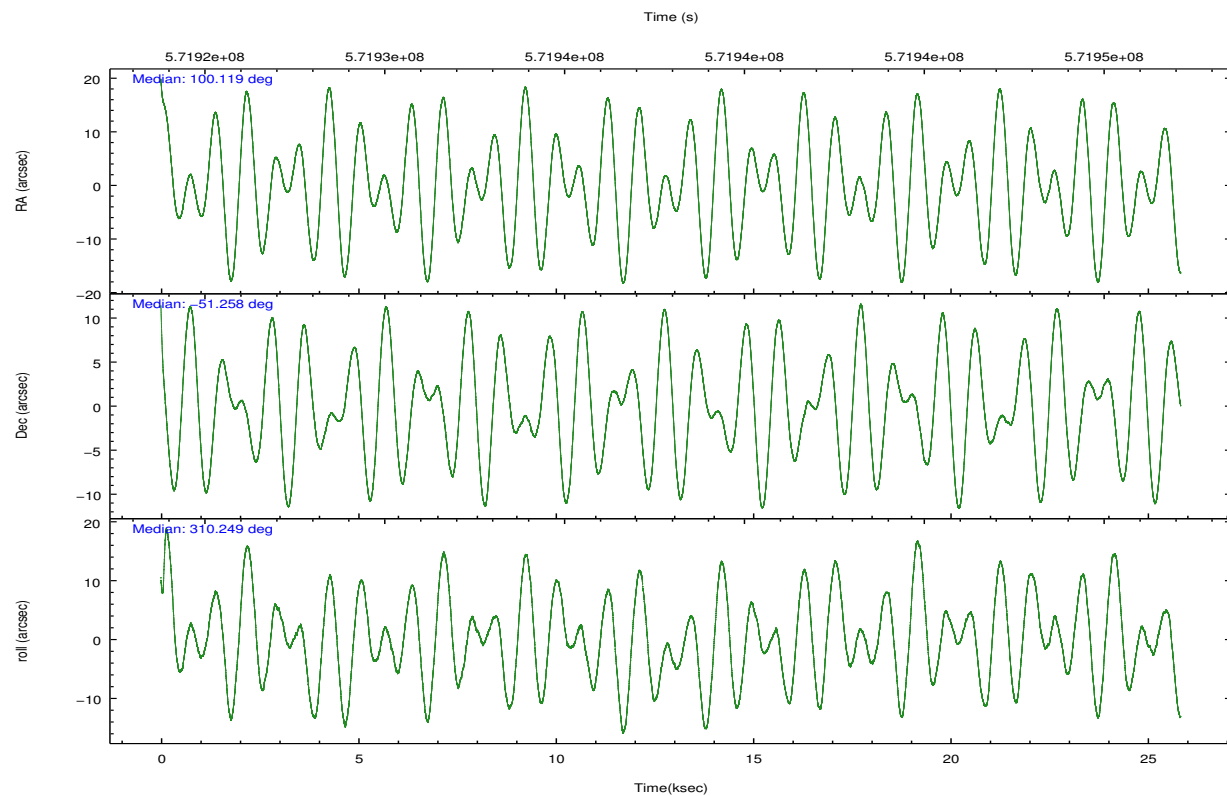
	ccd 0	ccd 1	ccd 2	ccd 3	ccd 6
grade 0 events	6220	14666	6062	5633	5991
	4%	9%	4%	3%	3%
grade 1 events	72	100	73	82	77
	0%	0%	0%	0%	0%
grade 2 events	4385	4607	4033	3549	4035
	3%	3%	2%	2%	2%
grade 3 events	1809	1790	1684	1755	1818
	1%	1%	1%	1%	1%
grade 4 events	1633	1830	1699	1679	1626
	1%	1%	1%	1%	1%
grade 5 events	6625	6790	6057	7437	7030
	4%	4%	4%	4%	4%
grade 6 events	3618	4172	3177	3352	4218
	2%	2%	2%	2%	2%
grade 7 events	115637	118055	127788	126463	131313
	82%	77%	84%	84%	84%

2.2 Compared Parameters

Parameter	Planned	Actual	Parameter	Planned	Actual
Instrument	ACIS	ACIS	Obspar format version number	7	7
Detector	ACIS-01236	ACIS-01236	Obspar file type	PREDICTED	ACTUAL
Grating	NONE	NONE	Obspar update status	NONE	UPDATED
Data mode	VFAINT	VFAINT	CCD I0 on	Y	Y
Observation mode	POINTING	POINTING	CCD I1 on	Y	Y
[deg] Pointing RA	100.077927	100.1195081785316	CCD I2 on	Y	Y
[deg] Pointing Dec	-51.249258	-51.25848992583324	CCD I3 on	Y	Y
[deg] Pointing Roll	310.010068	310.2511801523676	CCD S0 on	N	N
[mm] SIM focus pos	-0.782348	-0.7809083437167272	CCD S1 on	N	N
[mm] SIM defocus	0	0.001439871863259334	CCD S2 on	O1	Y
[mm] SIM translation stage pos	-225.842463	-225.8433433320239	CCD S3 on	N	N
[mm] SIM translation stage offset	-7.75	-7.749109670905796	CCD S4 on	N	N
[s] Observation start time (MET)	571925874.184000	571924231.32558	CCD S5 on	N	N
Observation start date	2016-02-15T12:16:46	2016-02-15T11:50:31	Number of optional ACIS chips dropped	0	0
[s] Observation end time (MET)	571950874.184000	571952276.35218	On-chip summing requested	N	N
Observation end date	2016-02-15T19:13:26	2016-02-15T19:37:56	Subarray requested	NONE	NONE
Read mode	TIMED	TIMED	Alternating exposures requested	N	N
			[s] Primary exposure time	0.000000	3.1

2.3 Aspect



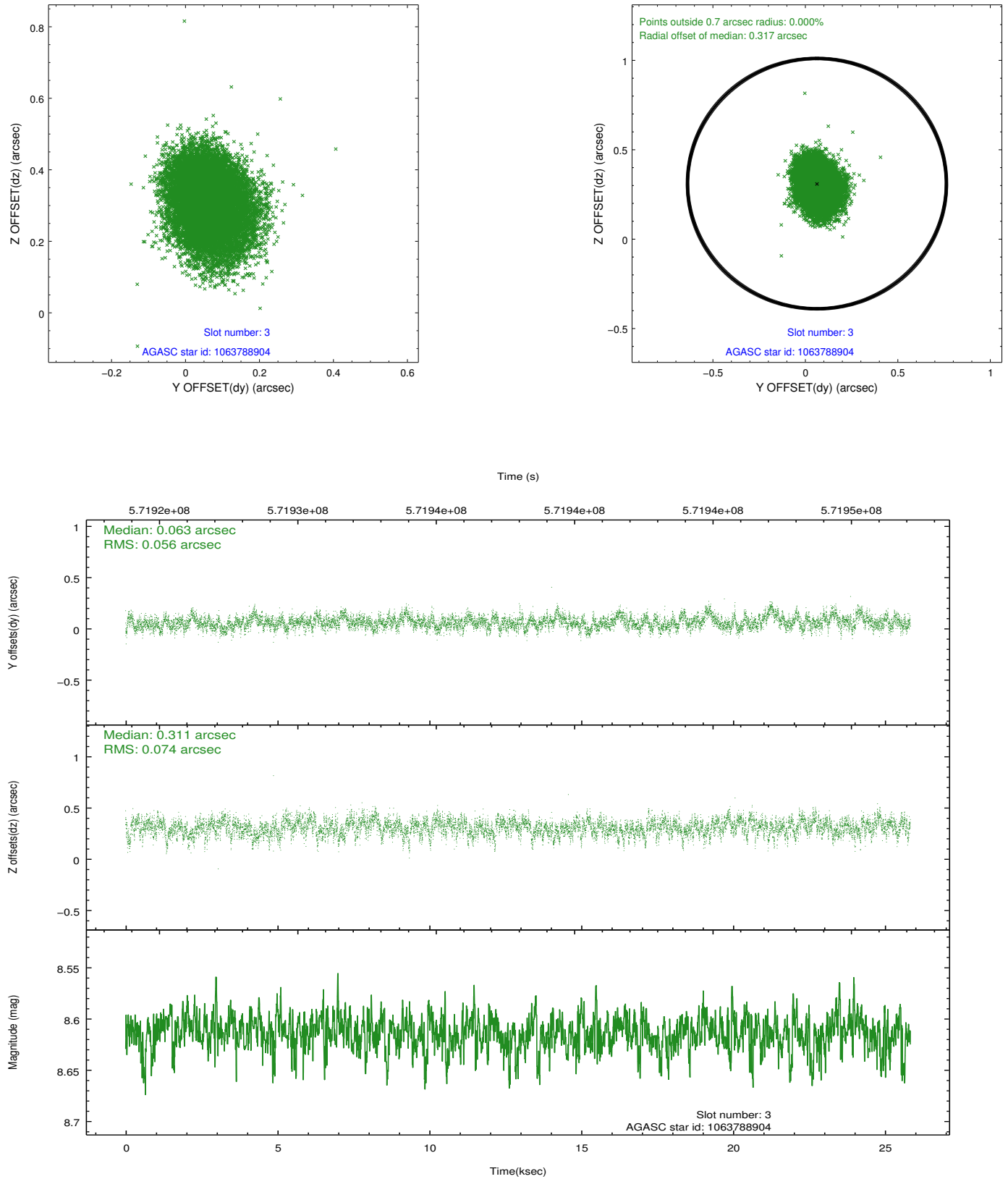


Slot Statistics

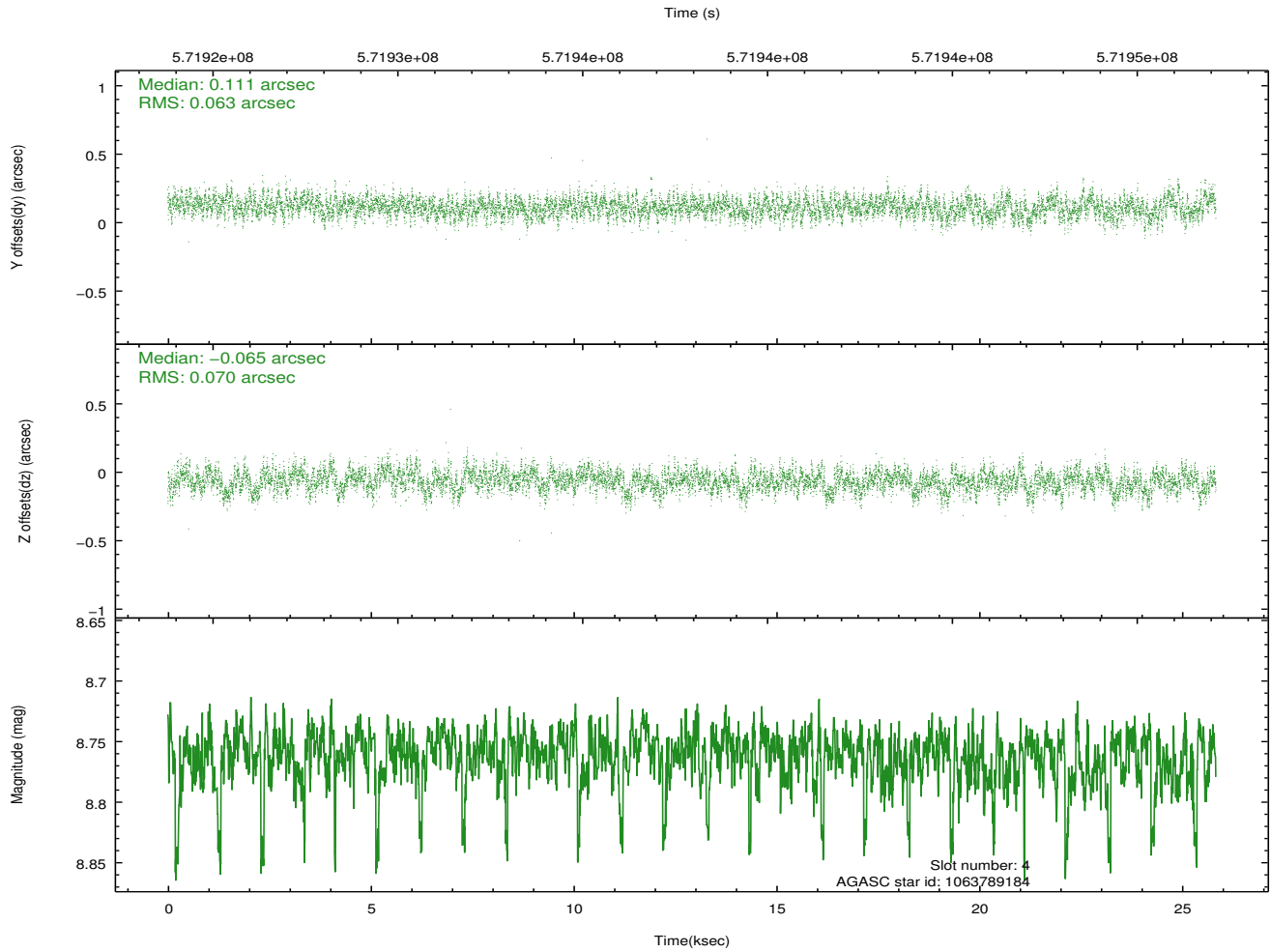
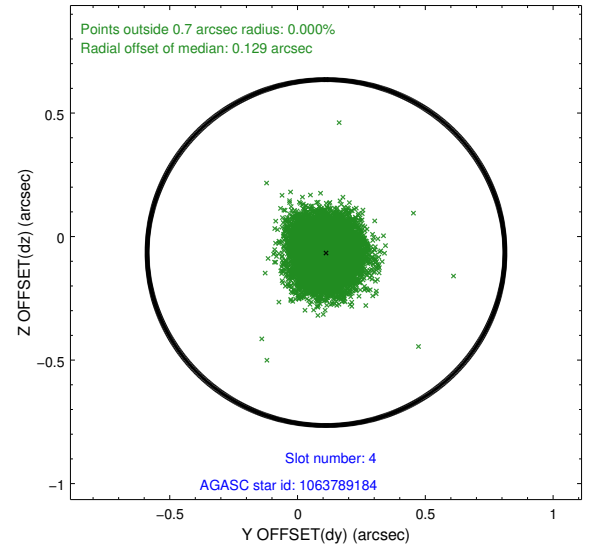
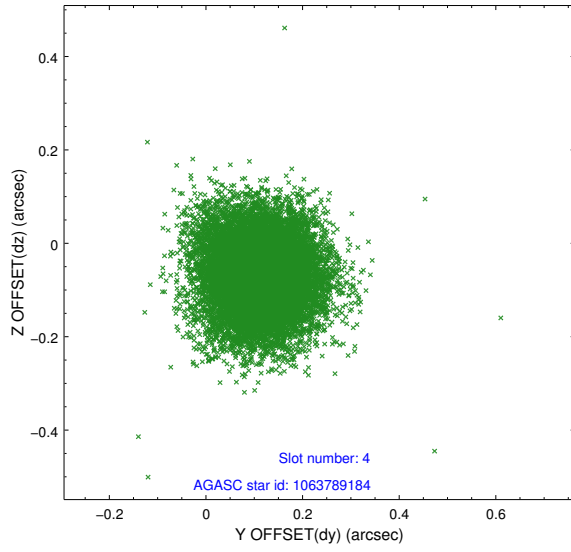
slot	status	used	id	mag	n_pts	med_dy	med_dz	dr1	dr2	ra	dec	mean_y	mean_z
0	FID		ACIS-I-1	7.25	6301	0.135	-0.096	0.013	0.027	0.000000	0.000000	925.65	-1001.08
1	FID		ACIS-I-5	7.24	6302	-0.380	0.084	0.017	0.022	0.000000	0.000000	-1823.01	896.37
2	FID		ACIS-I-6	7.27	6302	0.153	0.085	0.020	0.026	0.000000	0.000000	390.96	1541.12
3	GUIDE	used	1063788904	8.61	12599	0.063	0.311	0.098	0.161	99.169777	-51.429850	-802.34	-1986.74
4	GUIDE	used	1063789184	8.76	12595	0.111	-0.065	0.101	0.163	100.183029	-51.669286	1311.56	-793.46
5	GUIDE	used	1063793104	8.82	12590	0.100	-0.250	0.113	0.183	99.814404	-50.932863	-1255.39	273.59
6	GUIDE	used	1063796224	8.29	12601	0.115	0.285	0.095	0.151	98.682895	-51.216391	-2090.93	-2351.76
7	GUIDE	used	1063792392	9.14	12589	-0.388	-0.284	0.163	0.257	101.124908	-51.322233	1728.23	1624.29

2.4 Star Slots

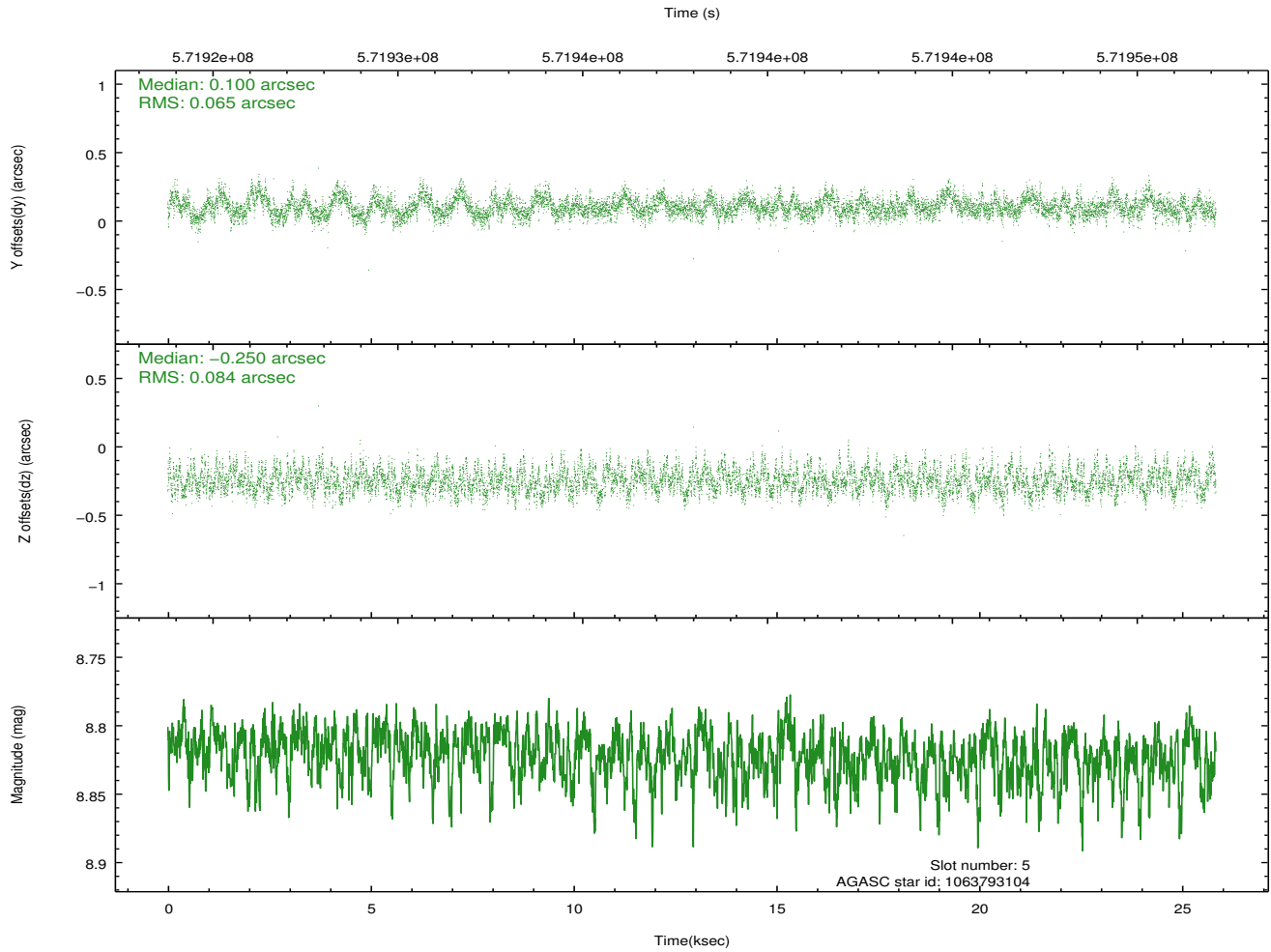
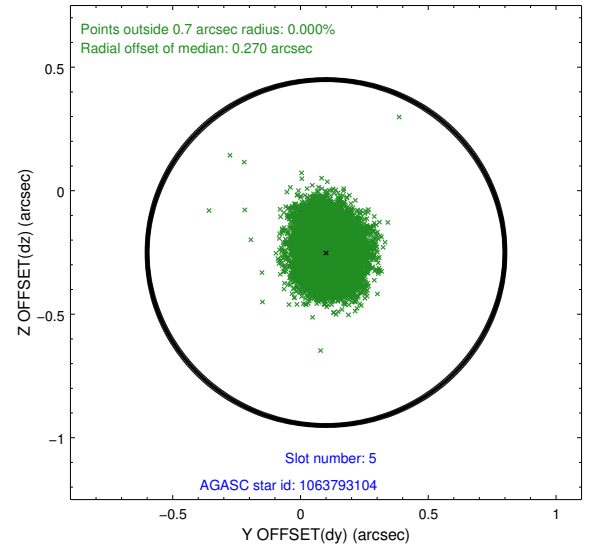
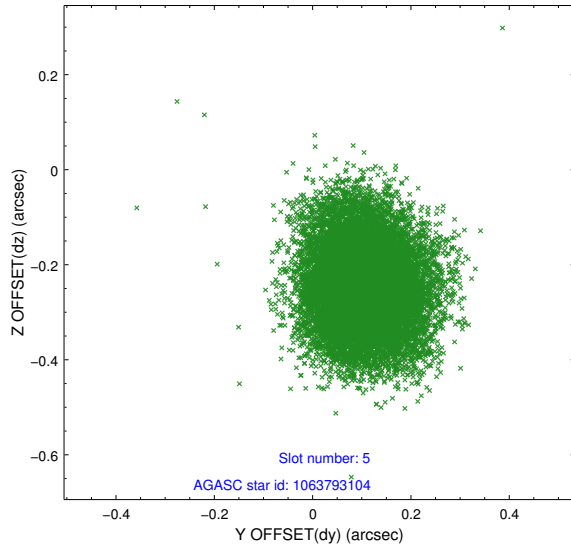
2.4.1 Slot 3



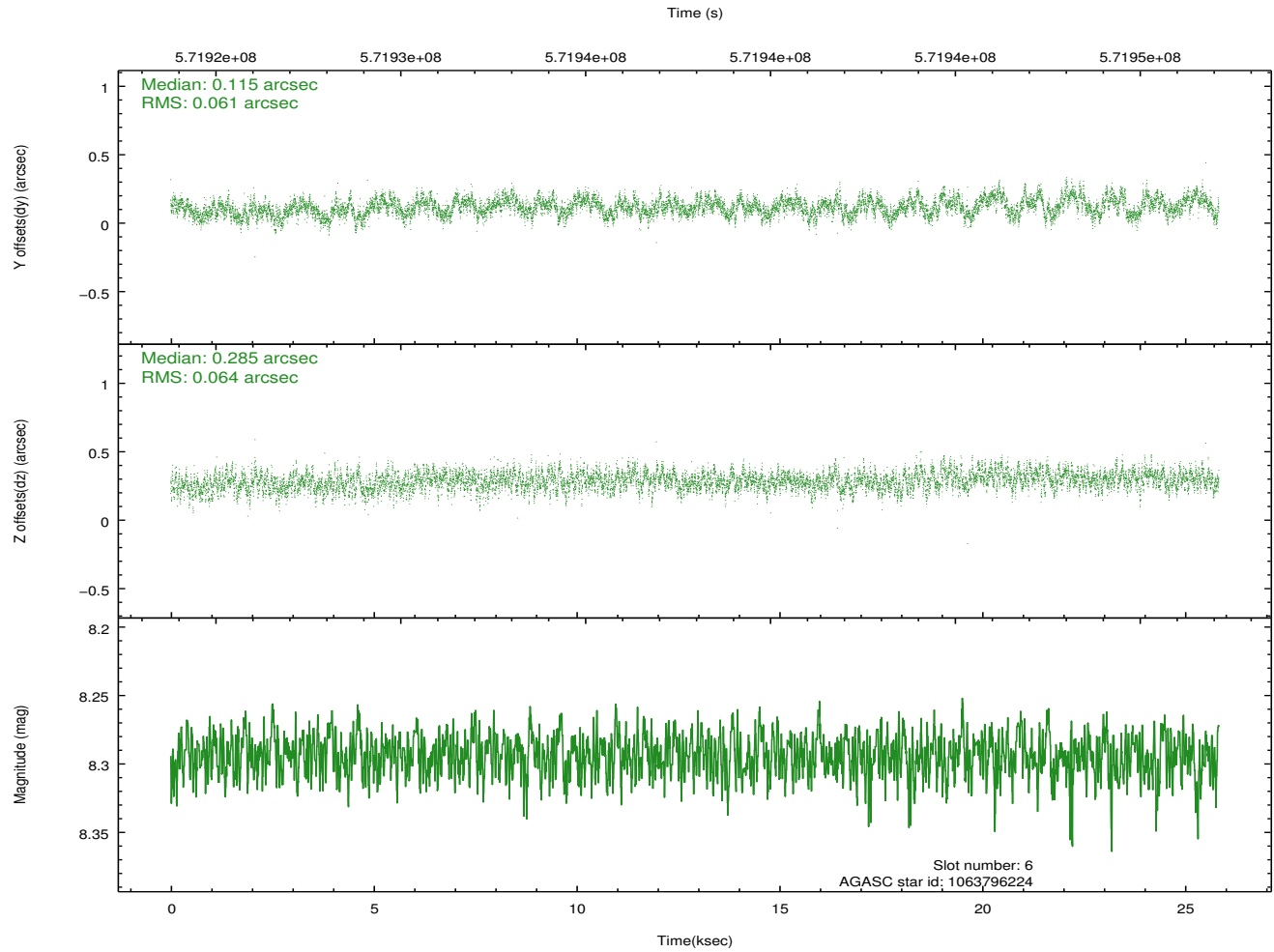
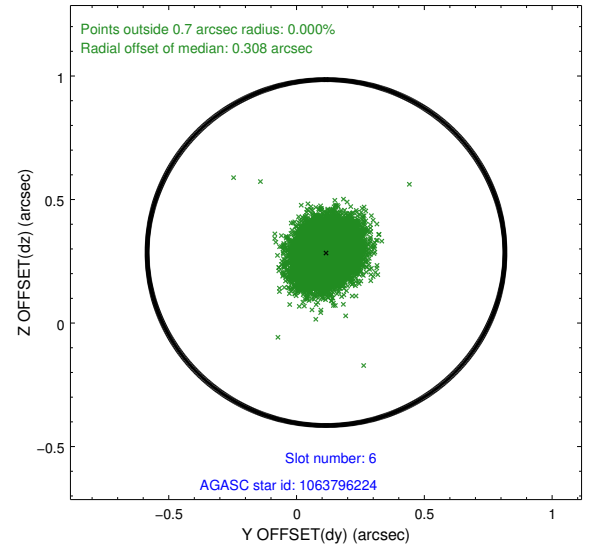
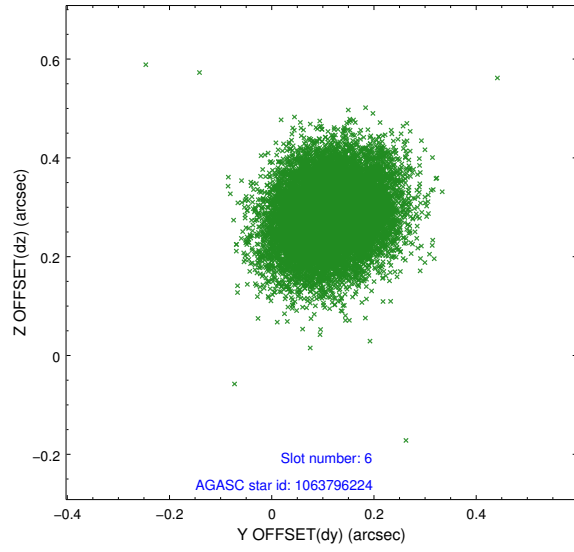
2.4.2 Slot 4



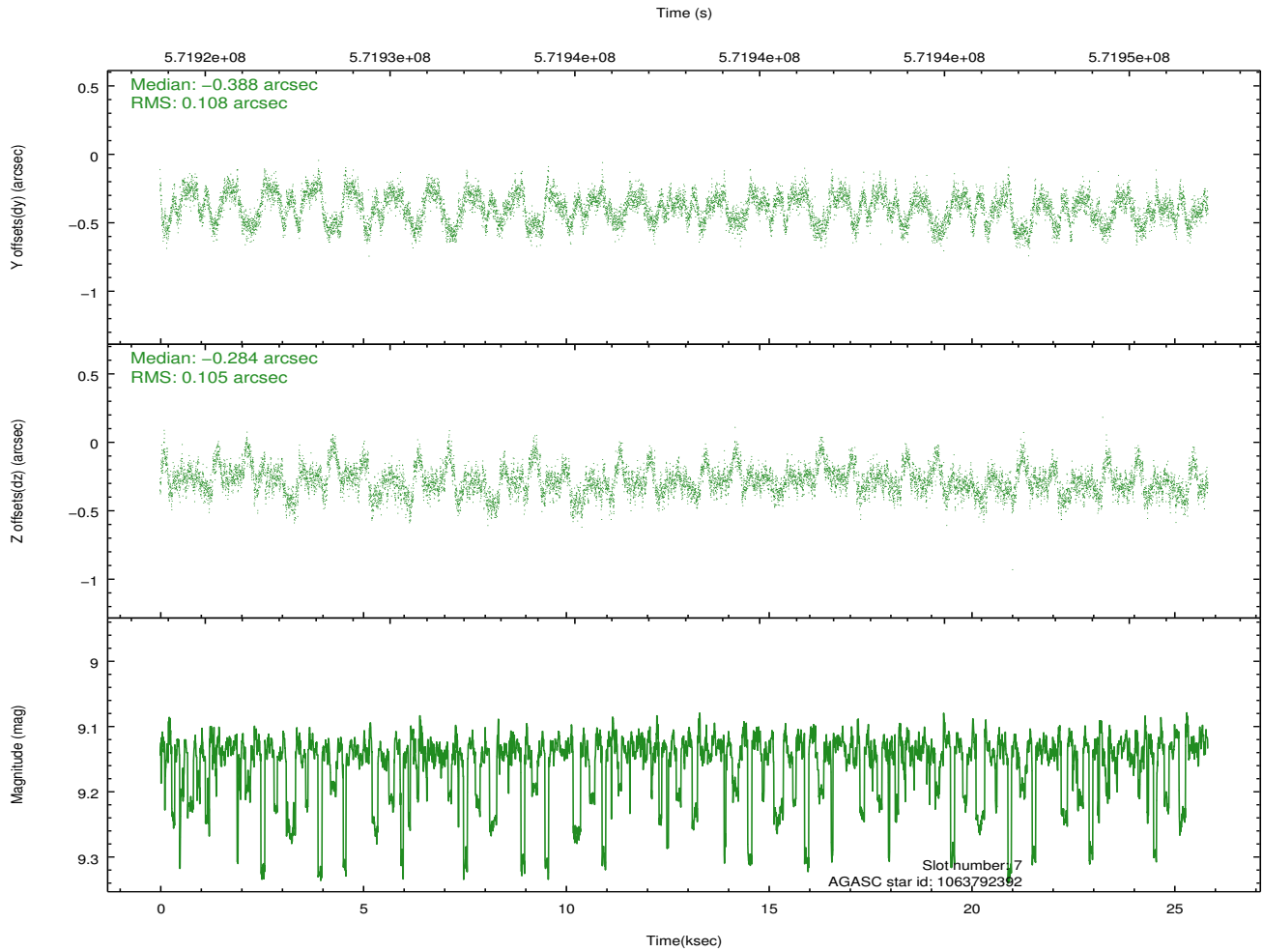
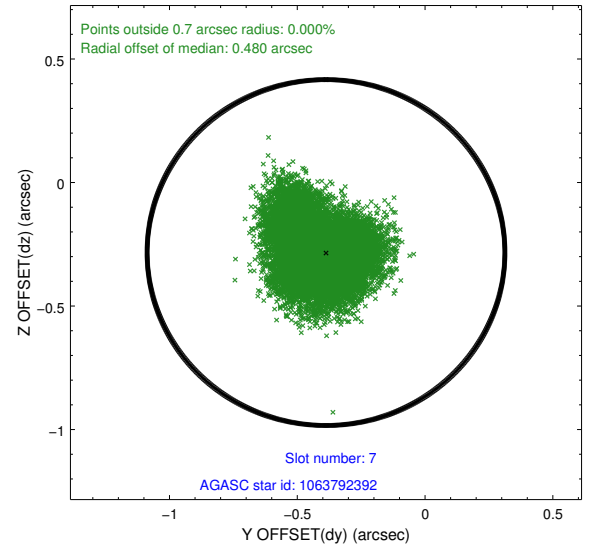
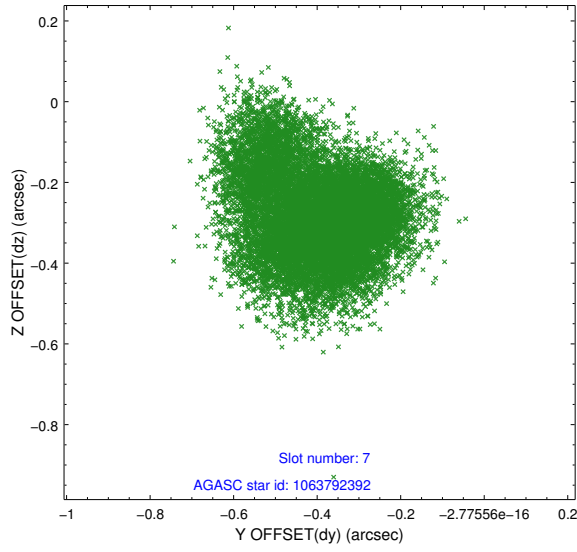
2.4.3 Slot 5



2.4.4 Slot 6

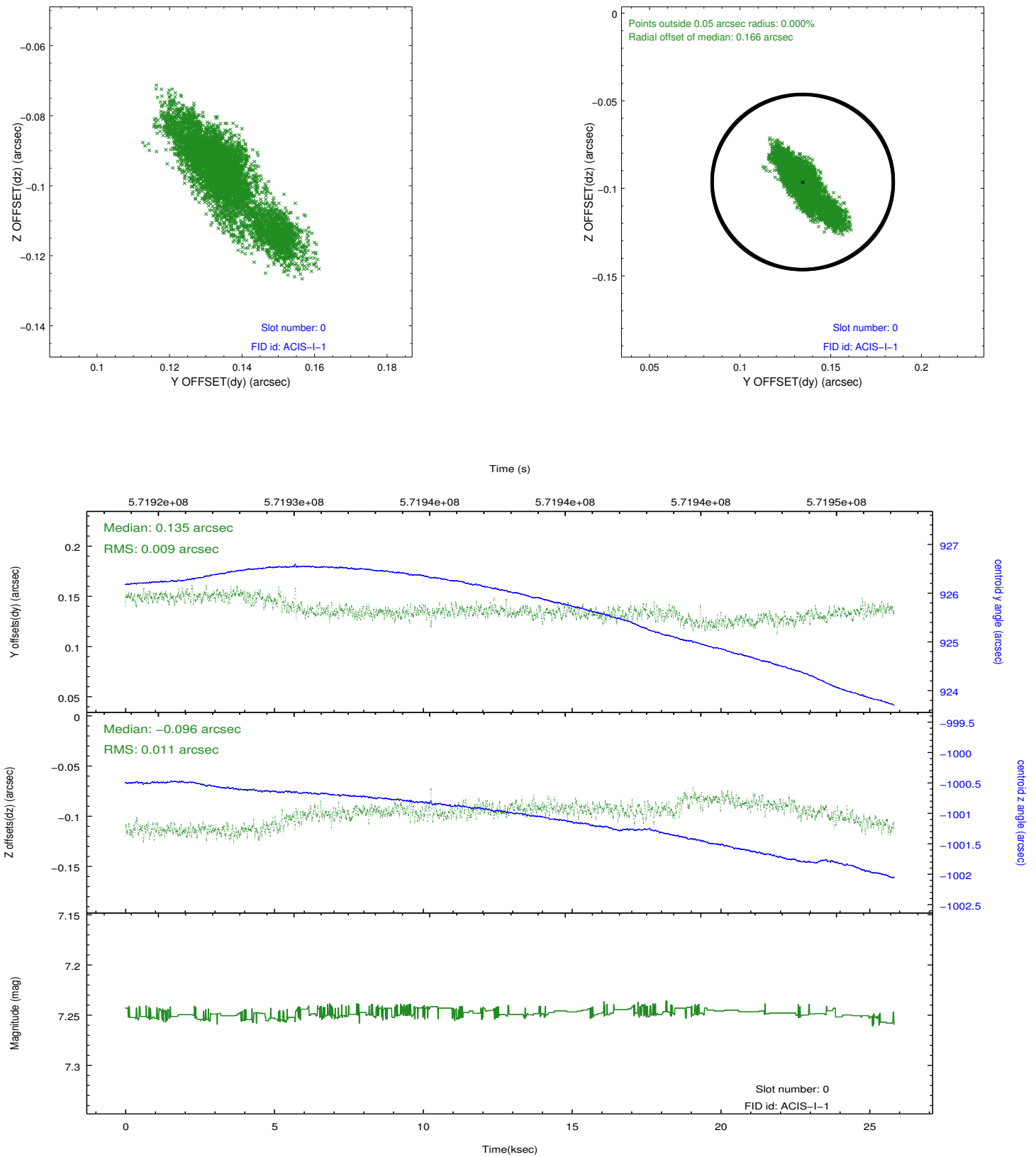


2.4.5 Slot 7

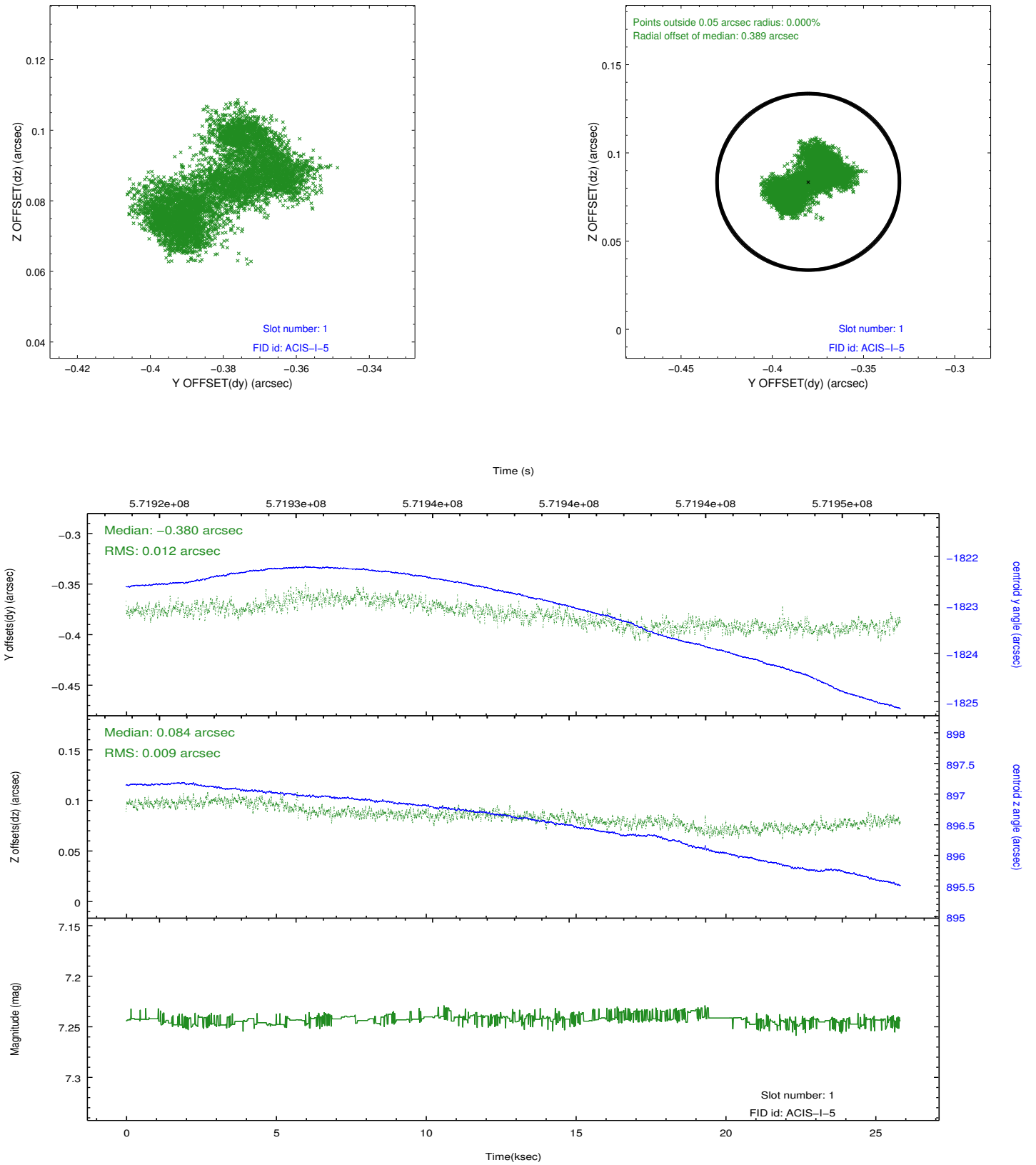


2.5 FID Slots

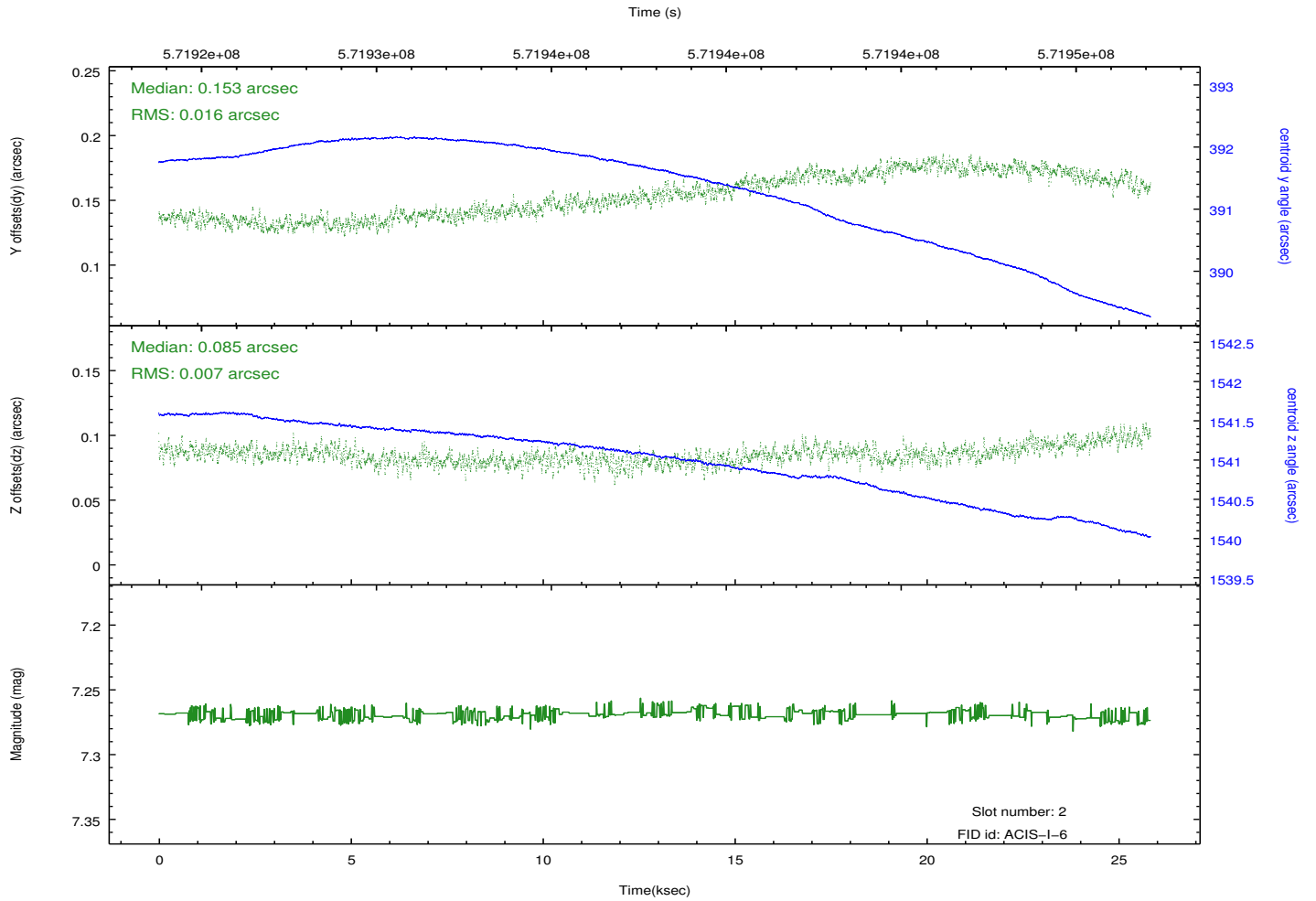
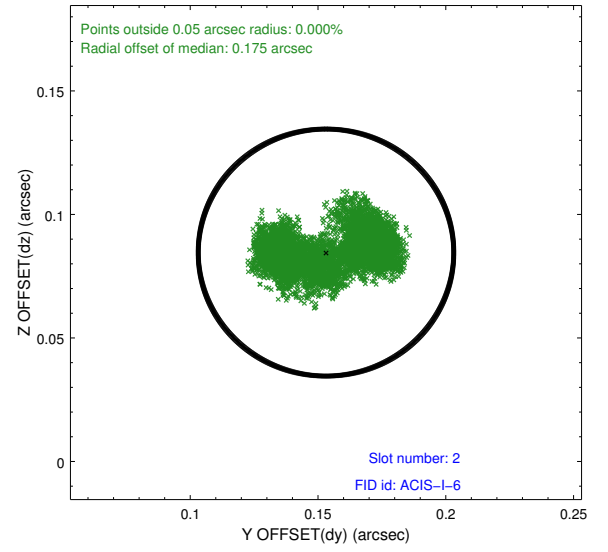
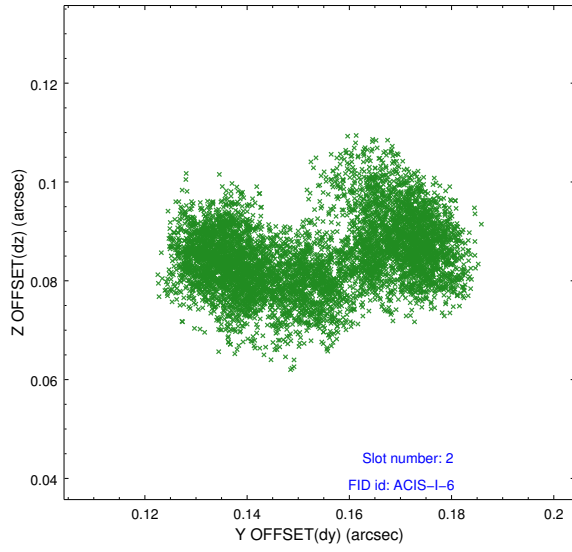
2.5.1 Slot 0



2.5.2 Slot 1



2.5.3 Slot 2



A Summary

A.1 Status

V&V Scientist	Jen Lauer
V&V Date (YYYY-MM-DD)	2016.02.16
V&V Edition	1
V&V Disposition and Status	OK
V&V Charge Time	25.054159142494

A.2 Comments