

V&V Reference Report

L2 ASCDS Version : 10.3.3

Observation 17484 - L2 Version 1
Chandra X-Ray Center

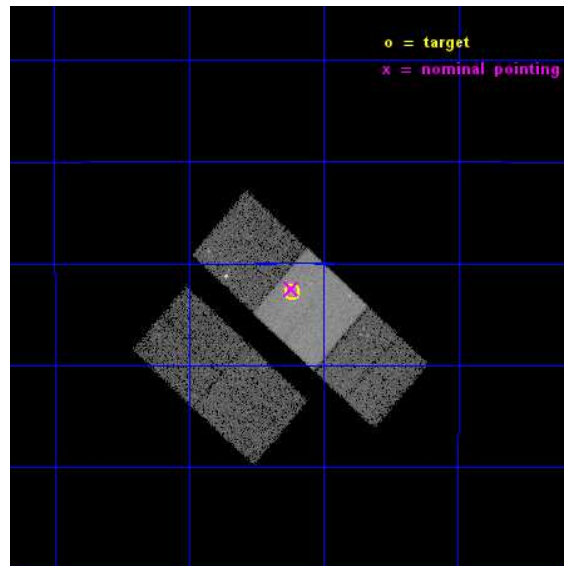
L2 Processing Date : Feb 22 2015

Contents

1	Front	2
2	OBI	3
2.1	OBI	3
2.1.1	Images	3
2.1.2	Bias	3
2.1.3	Parameters	4
2.1.4	Events	4
2.2	Compared Parameters	5
2.3	Aspect	6
2.4	Star Slots	9
2.4.1	Slot 3	9
2.4.2	Slot 4	10
2.4.3	Slot 5	11
2.4.4	Slot 6	12
2.4.5	Slot 7	13
2.5	FID Slots	14
2.5.1	Slot 0	14
2.5.2	Slot 1	15
2.5.3	Slot 2	16
A	Summary	17
A.1	Status	17
A.2	Comments	17

1 Front

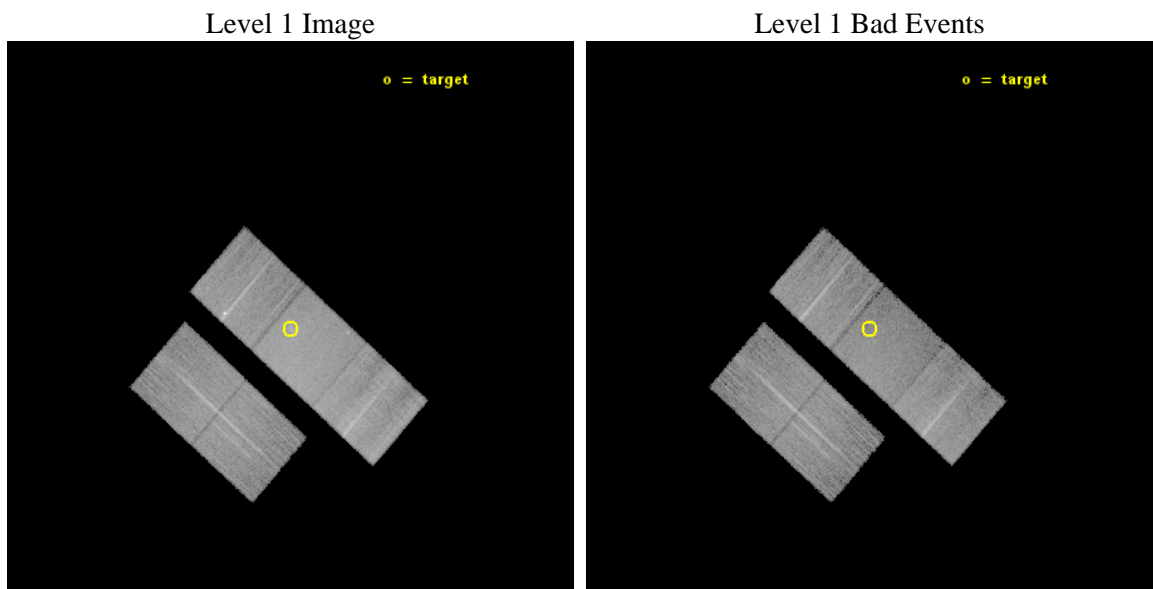
seq_num	801543	Sequence number
obs_id	17484	Observation id
title	Resolving the central region of a very luminous galaxy cluster at $z \sim 0.7$	Proposal title
observer	Dr. Peter Predehl	Principal investigator
object	Xclass 2305	Source name
dtcycle	0	
cycle	P	events from which exps? Prim/Second/Both
ra_targ	180.059167	Observer's specified target RA [deg]
dec_targ	-20.046944	Observer's specified target Dec [deg]
ra_nom	180.06009237881	Nominal RA [deg]
dec_nom	-20.041562098178	Nominal Dec [deg]
roll_nom	41.737886363504	Nominal Roll [deg]
revision	1	Processing version of data
ontime	21066.514591932	Sum of GTIs [s]
livetime	20791.265069846	Livetime [s]
ontime2	21066.350431919	Sum of GTIs [s]
ontime3	21063.291481733	Sum of GTIs [s]
ontime6	21066.473551989	Sum of GTIs [s]
ontime7	21066.514591932	Sum of GTIs [s]
ontime8	21066.391471982	Sum of GTIs [s]
l2events	107221	Number of level 2 events



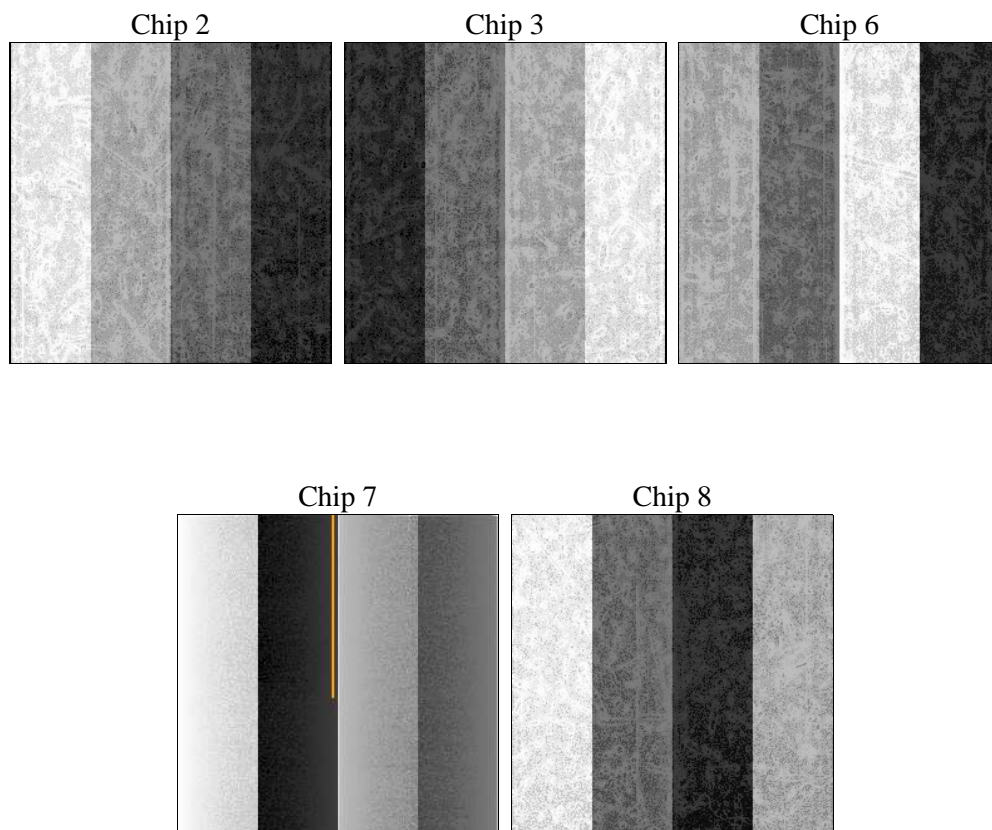
2 OBI

2.1 OBI

2.1.1 Images



2.1.2 Bias



2.1.3 Parameters

obi_num	2	Obi number	sched_exp_time	21000.000000	[s] Scheduled observation exposure time
ascdsver	10.3.3	Processing system revision	ontime	21066.514591932	Sum of GTIs [s]
caldbver	4.6.6	 	ontime2	21066.350431919	Sum of GTIs [s]
date	2015-02-22T12:30:49	Date and time of file creation	ontime3	21063.291481733	Sum of GTIs [s]
revision	1	Processing version of data	ontime6	21066.473551989	Sum of GTIs [s]
			ontime7	21066.514591932	Sum of GTIs [s]
			ontime8	21066.391471982	Sum of GTIs [s]
			l1events	593295	Number of level 1 events

2.1.4 Events

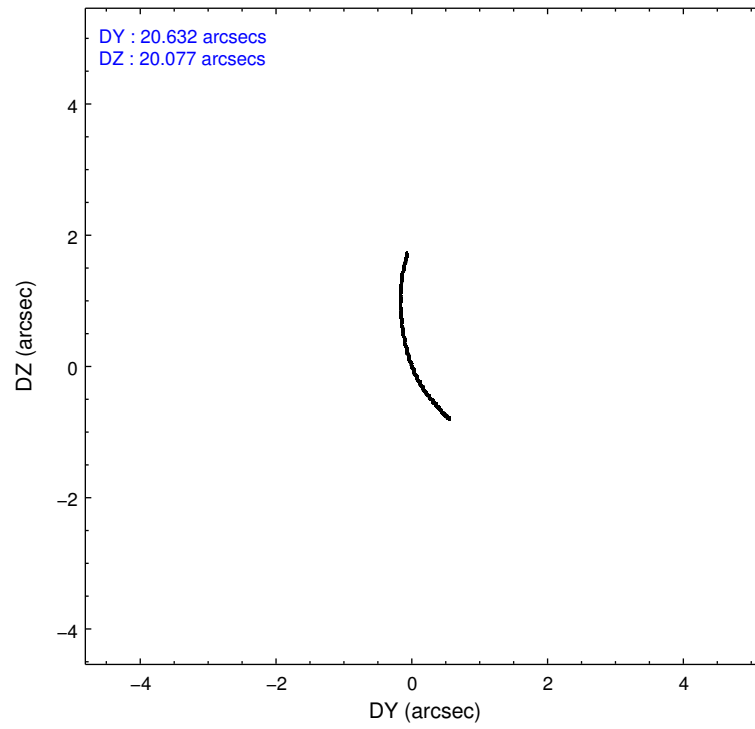
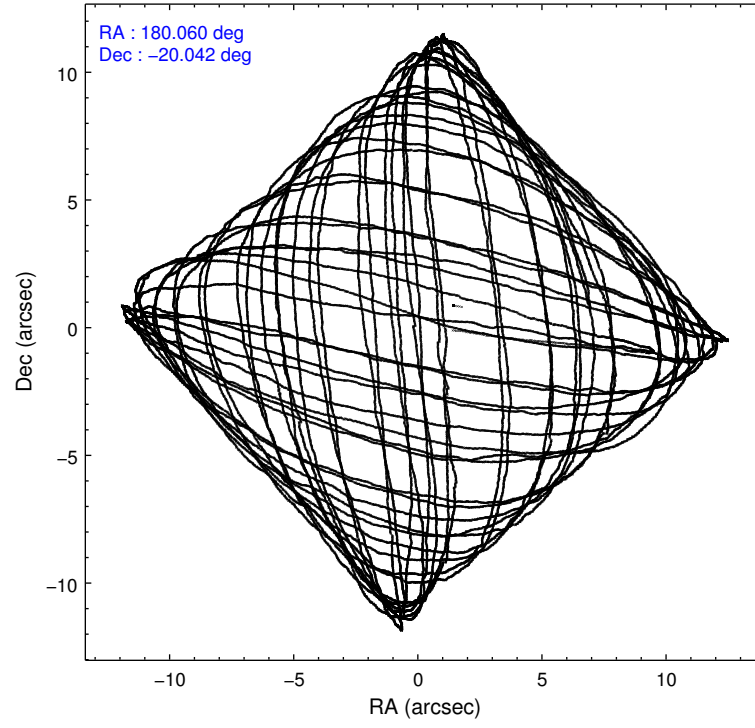
	ccd 2	ccd 3	ccd 6	ccd 7	ccd 8
level 1 events	100864	102052	108210	142696	139473
rejected events	89235	90661	93642	79517	101275
rejected %	88%	88%	86%	55%	72%

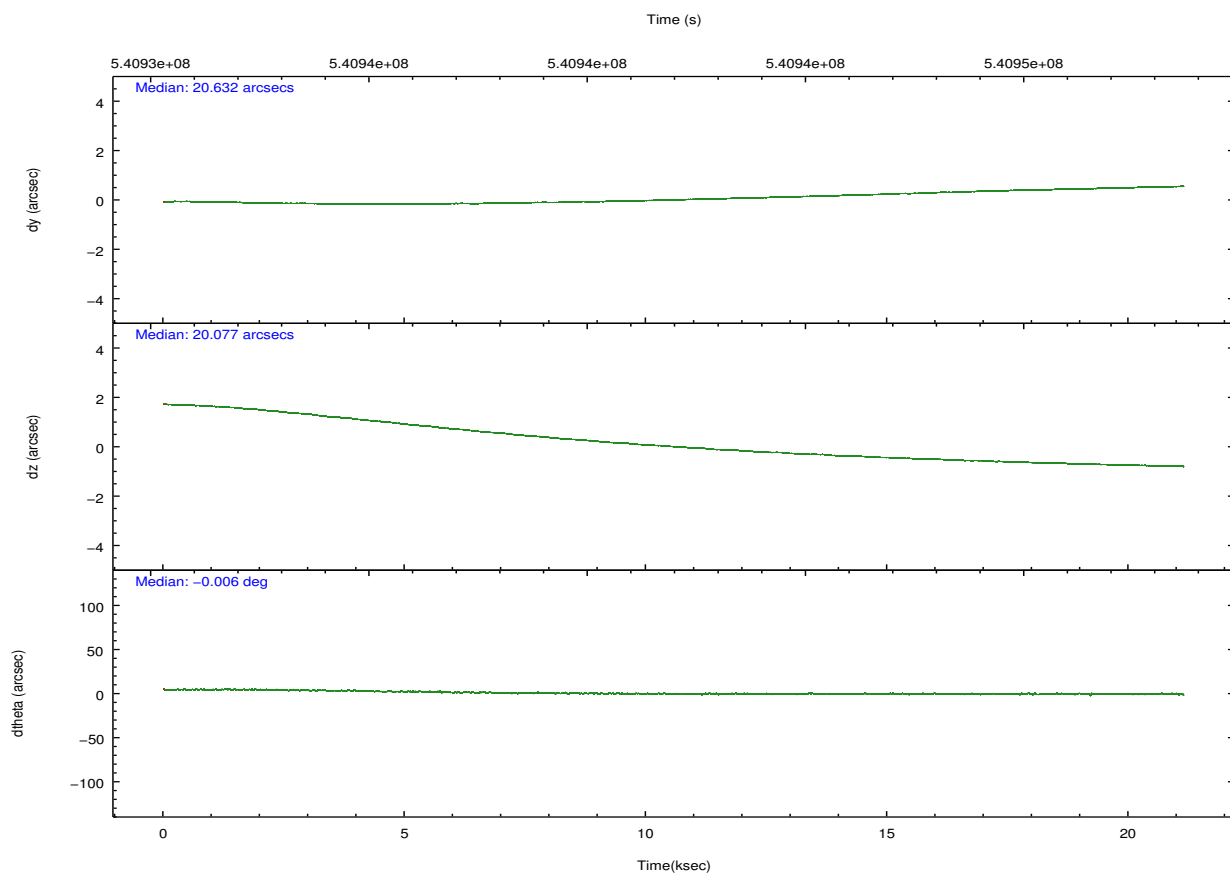
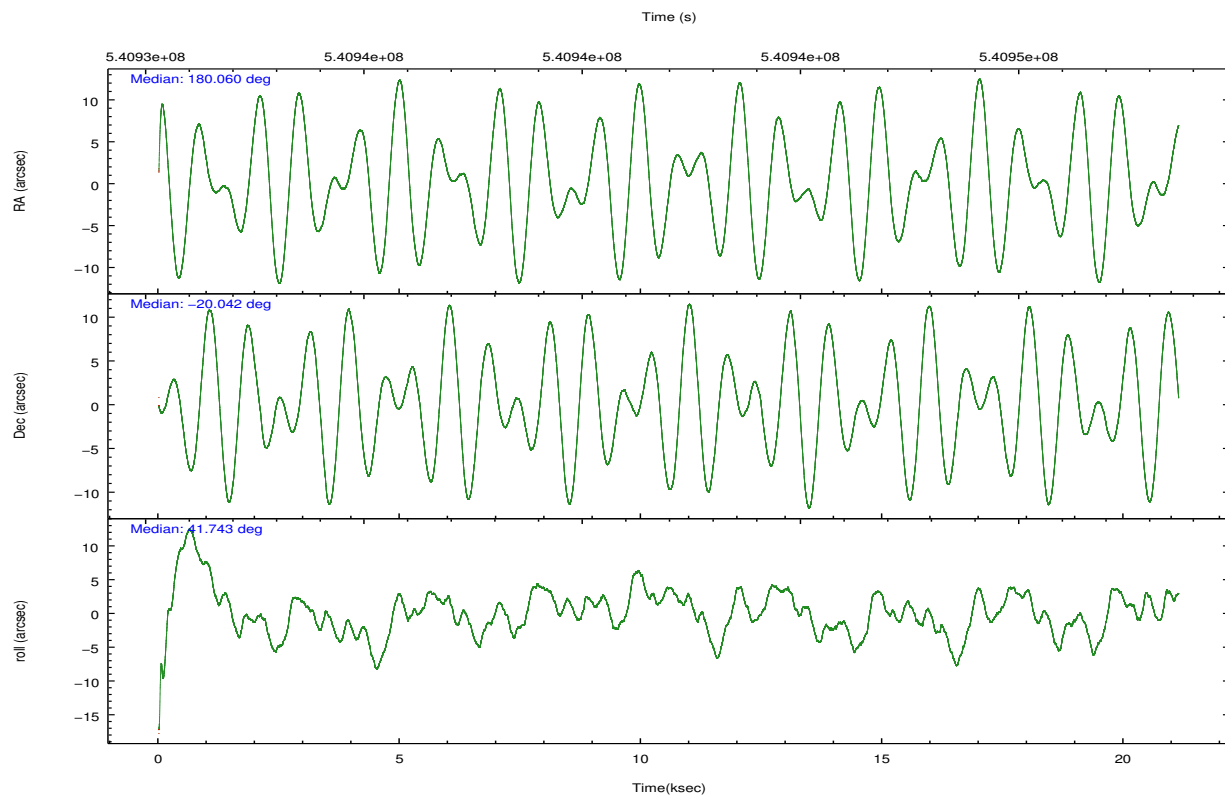
	ccd 2	ccd 3	ccd 6	ccd 7	ccd 8
grade 0 events	4059	3848	5682	5901	10847
	4%	3%	5%	4%	7%
grade 1 events	51	62	66	167	85
	0%	0%	0%	0%	0%
grade 2 events	2905	2639	3156	13072	9024
	2%	2%	2%	9%	6%
grade 3 events	1202	1220	1351	5419	4145
	1%	1%	1%	3%	2%
grade 4 events	1181	1213	1353	5338	3939
	1%	1%	1%	3%	2%
grade 5 events	4383	5304	5551	14260	7843
	4%	5%	5%	9%	5%
grade 6 events	2284	2471	3027	33457	10246
	2%	2%	2%	23%	7%
grade 7 events	84799	85295	88024	65082	93344
	84%	83%	81%	45%	66%

2.2 Compared Parameters

Parameter	Planned	Actual	Parameter	Planned	Actual
Instrument	ACIS	ACIS	Obspar format version number	7	7
Detector	ACIS-23678	ACIS-23678	Obspar file type	PREDICTED	ACTUAL
Grating	NONE	NONE	Obspar update status	NONE	UPDATED
Data mode	FAINT	FAINT	Number of optional ACIS chips dropped	0	0
Observation mode	POINTING	POINTING	On-chip summing requested	N	N
[deg] Pointing RA	180.051311	180.0600923788131	Subarray requested	NONE	NONE
[deg] Pointing Dec	-20.067754	-20.04156209817753	Alternating exposures requested	N	N
[deg] Pointing Roll	41.578253	41.73788636350407	[s] Primary exposure time	0.000000	3.1
[mm] SIM focus pos	-0.684267	-0.6828225247311905			
[mm] SIM defocus	0	0.001444936568705701			
[mm] SIM translation stage pos	-190.132523	-190.1400660498719			
[mm] SIM translation stage offset	0	0.00754346686406393			
[s] Observation start time (MET)	540931549.184000	540930286.98923			
Observation start date	2015-02-21T18:44:42	2015-02-21T18:24:46			
[s] Observation end time (MET)	540952549.184000	540953245.45302			
Observation end date	2015-02-22T00:34:42	2015-02-22T00:47:25			
Read mode	TIMED	TIMED			

2.3 Aspect



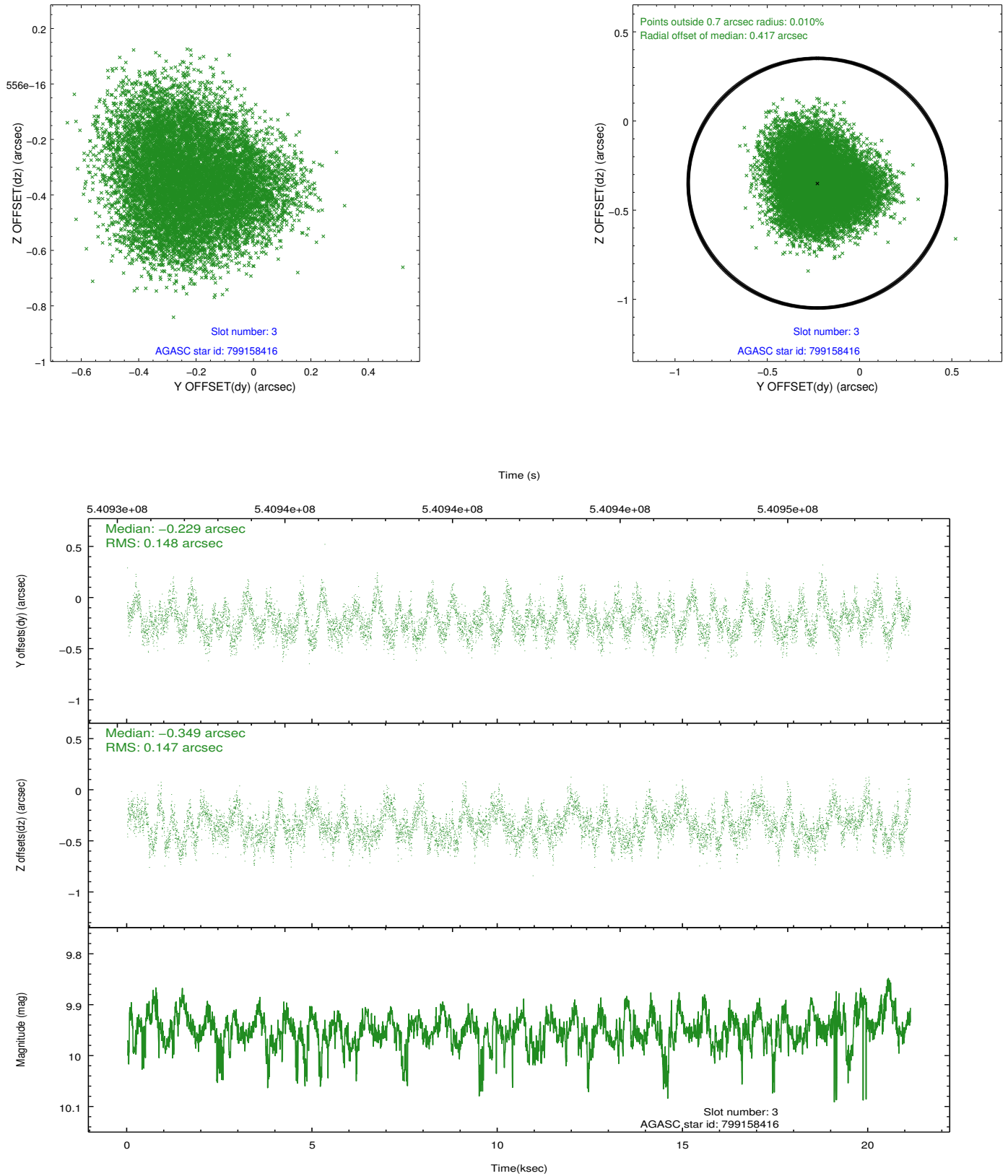


Slot Statistics

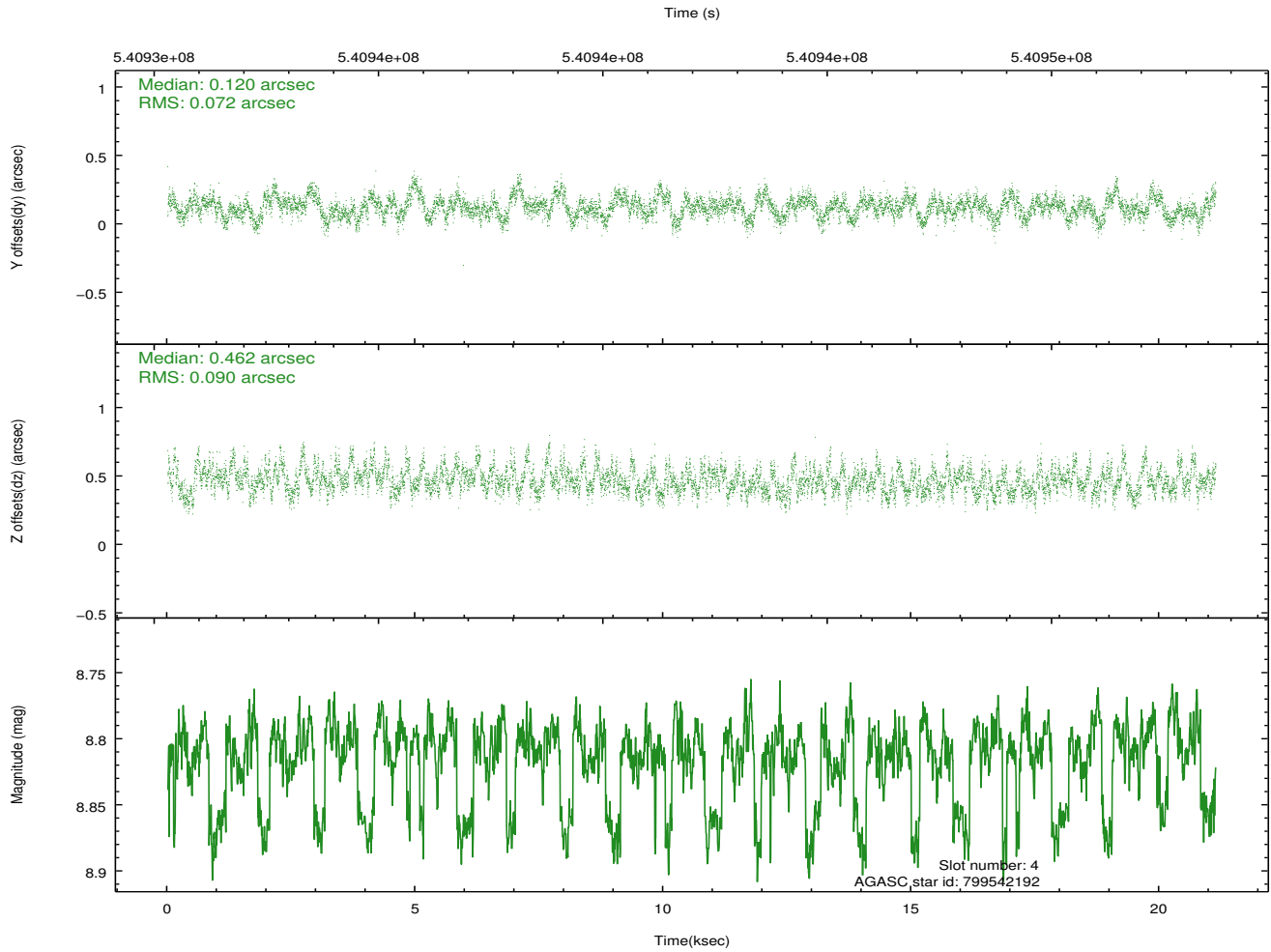
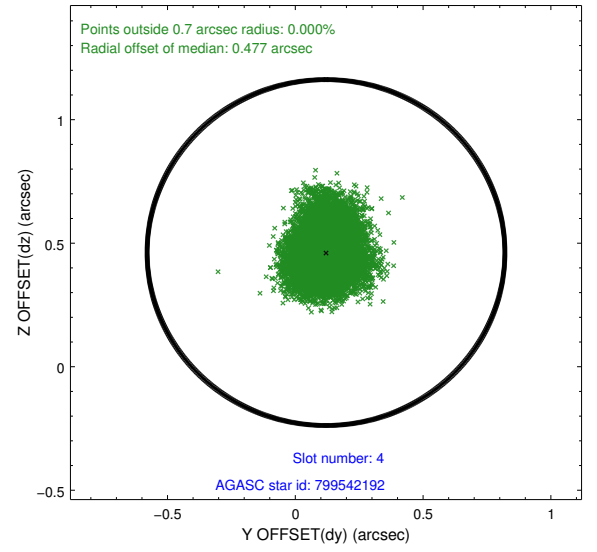
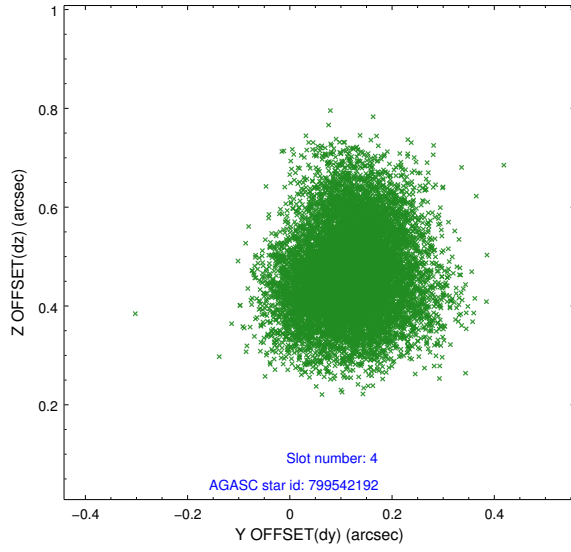
slot	status	used	id	mag	n_pts	med_dy	med_dz	dr1	dr2	ra	dec	mean_y	mean_z
0	FID		ACIS-S-1	7.04	5155	0.021	-0.049	0.023	0.032	0.000000	0.000000	922.22	-1737.48
1	FID		ACIS-S-4	7.06	5155	0.238	0.028	0.018	0.024	0.000000	0.000000	2139.92	166.59
2	FID		ACIS-S-5	7.07	5155	-0.285	0.030	0.011	0.016	0.000000	0.000000	-1826.76	160.35
3	GUIDE	used	799158416	9.95	10299	-0.229	-0.349	0.228	0.346	180.355727	-19.670852	1719.67	382.28
4	GUIDE	used	799542192	8.81	10307	0.120	0.462	0.124	0.197	180.227256	-20.632680	-905.97	-1914.24
5	GUIDE	used	799543728	7.43	10307	0.184	0.238	0.072	0.117	180.347046	-20.663831	-679.86	-2266.91
6	GUIDE	used	799551128	7.78	10308	-0.060	0.029	0.087	0.141	179.791713	-20.353786	-1341.66	-195.50
7	GUIDE	used	799543736	9.63	10300	-0.024	-0.384	0.172	0.287	179.586908	-20.076271	-1196.61	1017.47

2.4 Star Slots

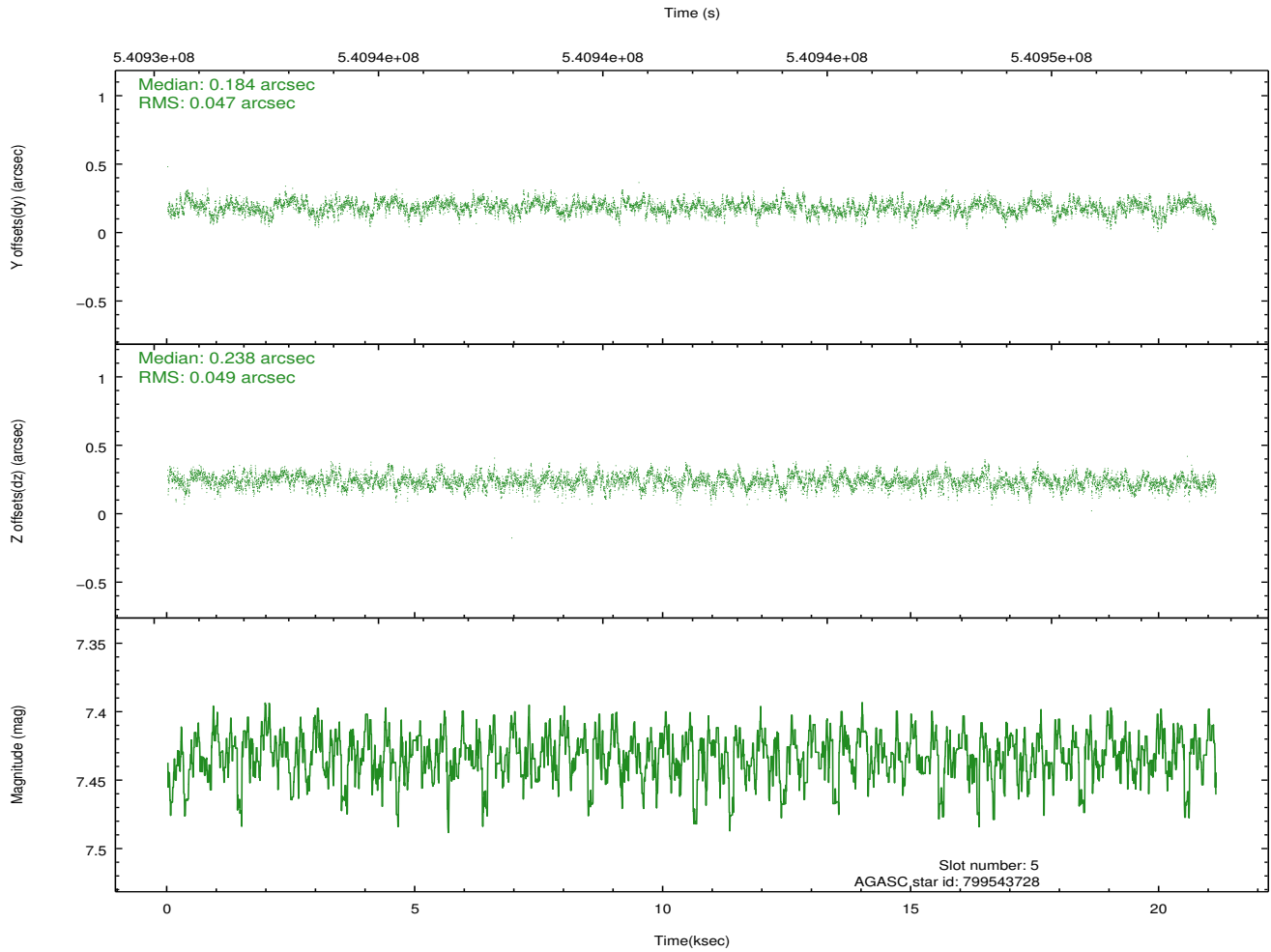
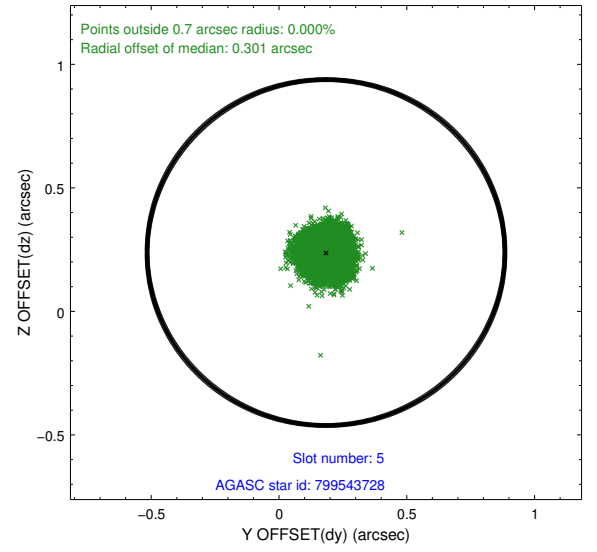
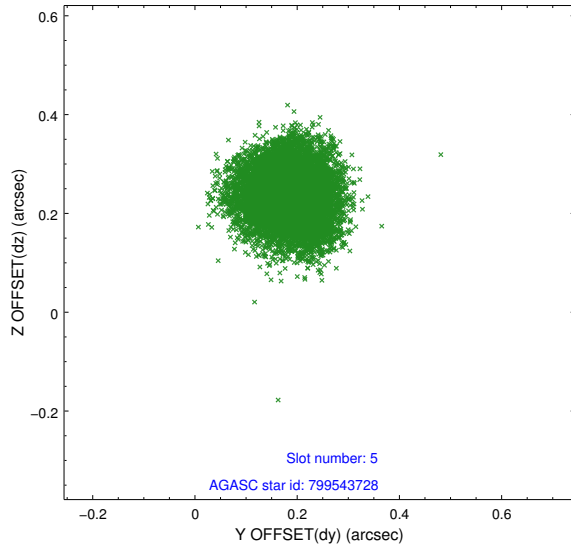
2.4.1 Slot 3



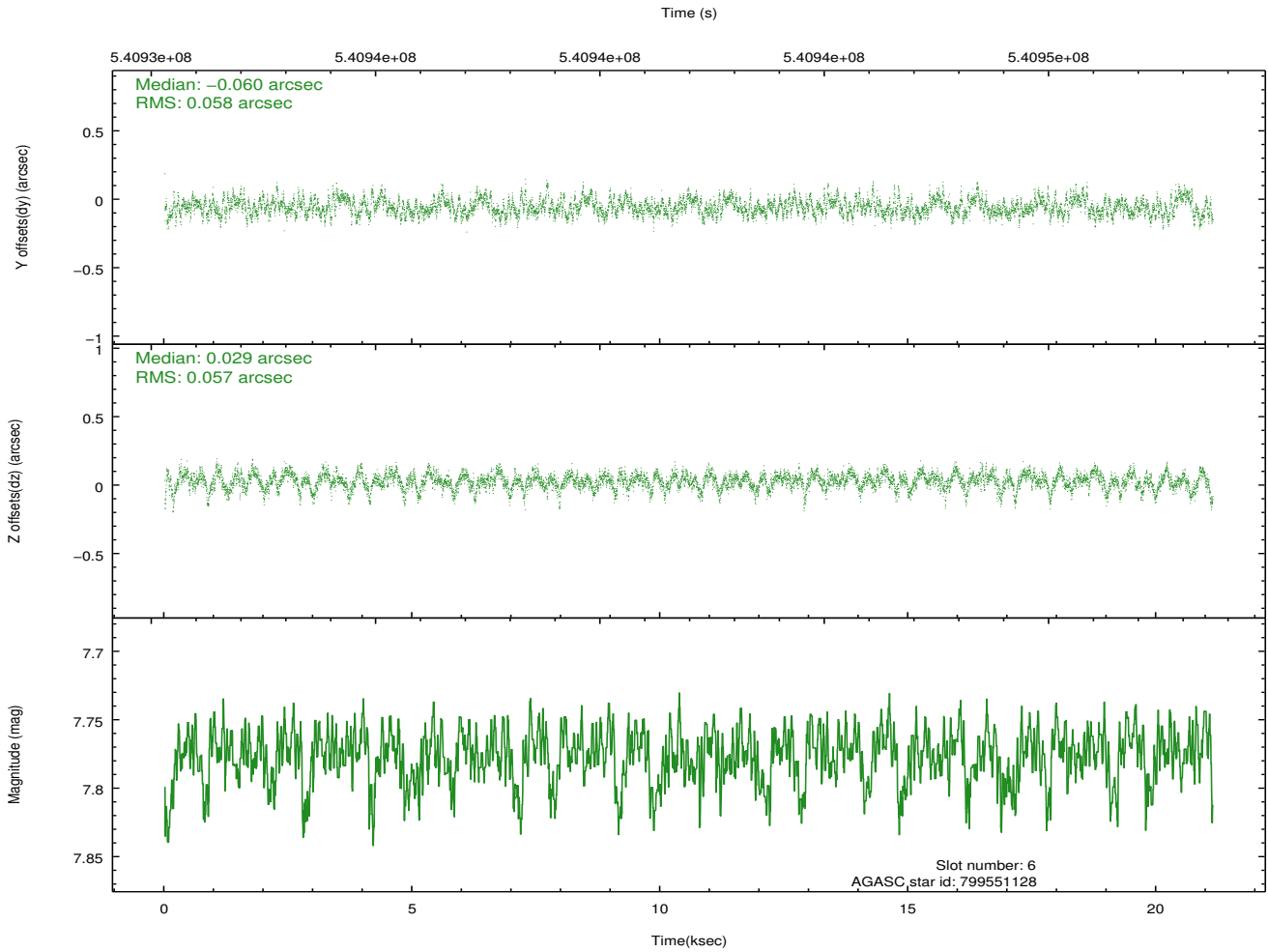
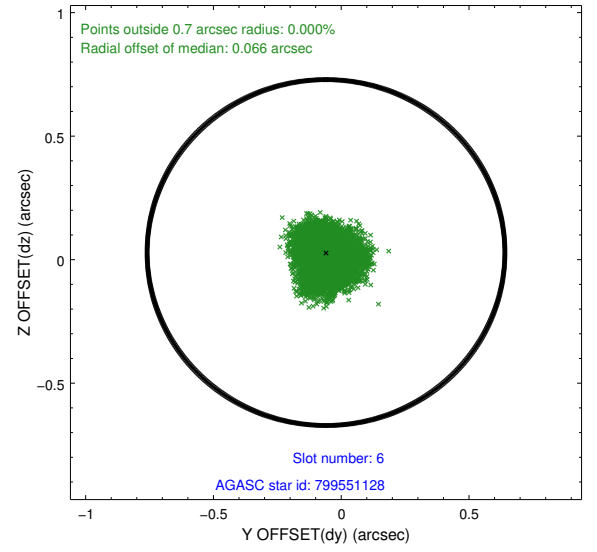
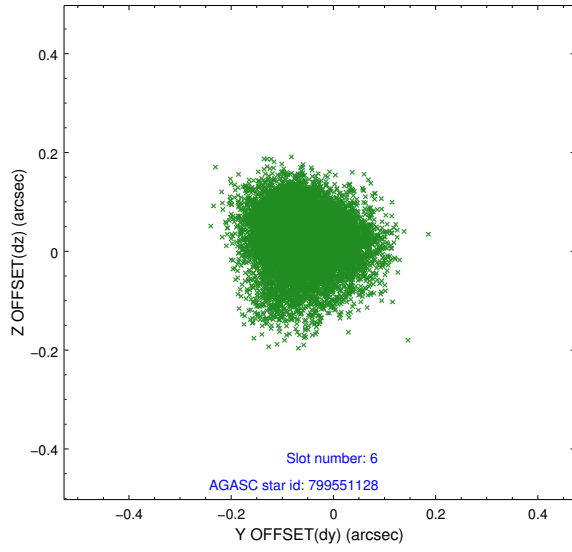
2.4.2 Slot 4



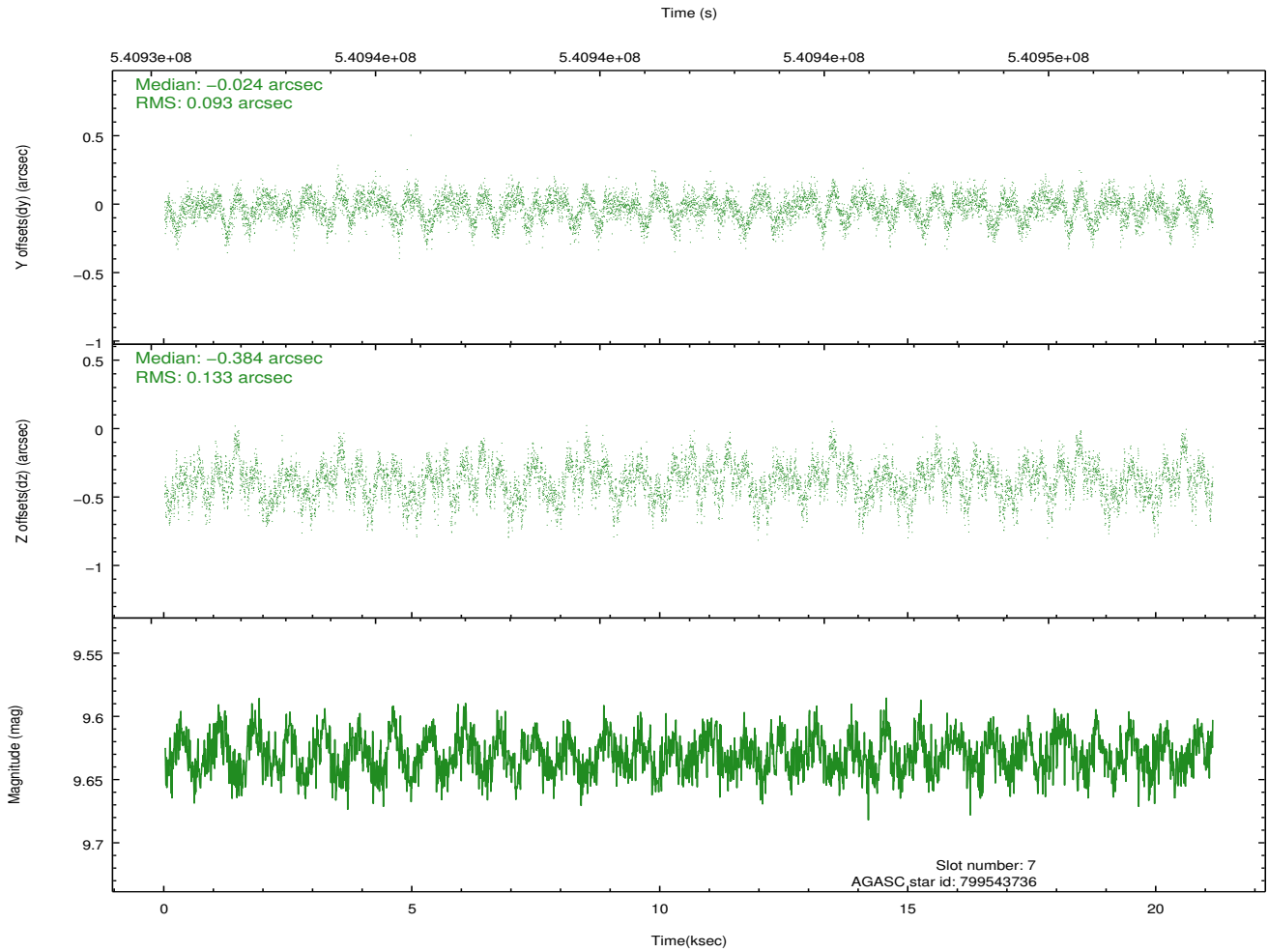
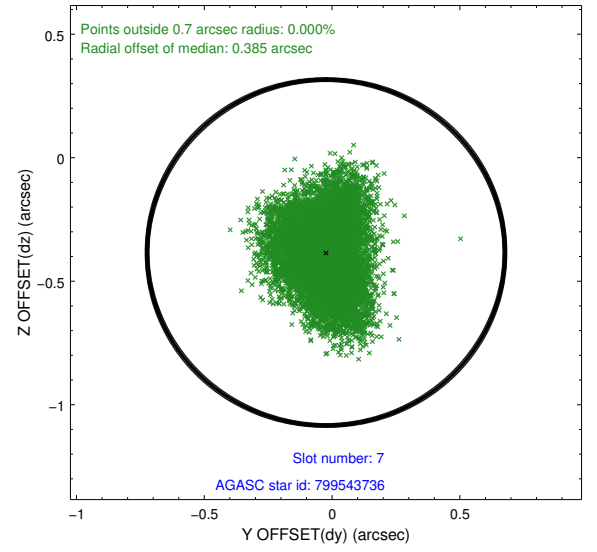
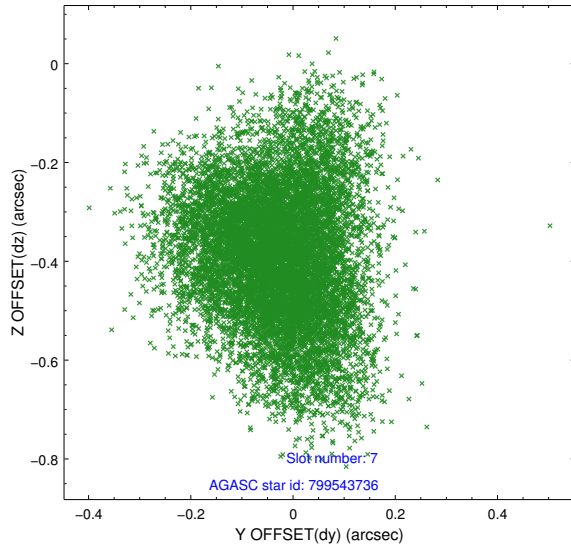
2.4.3 Slot 5



2.4.4 Slot 6

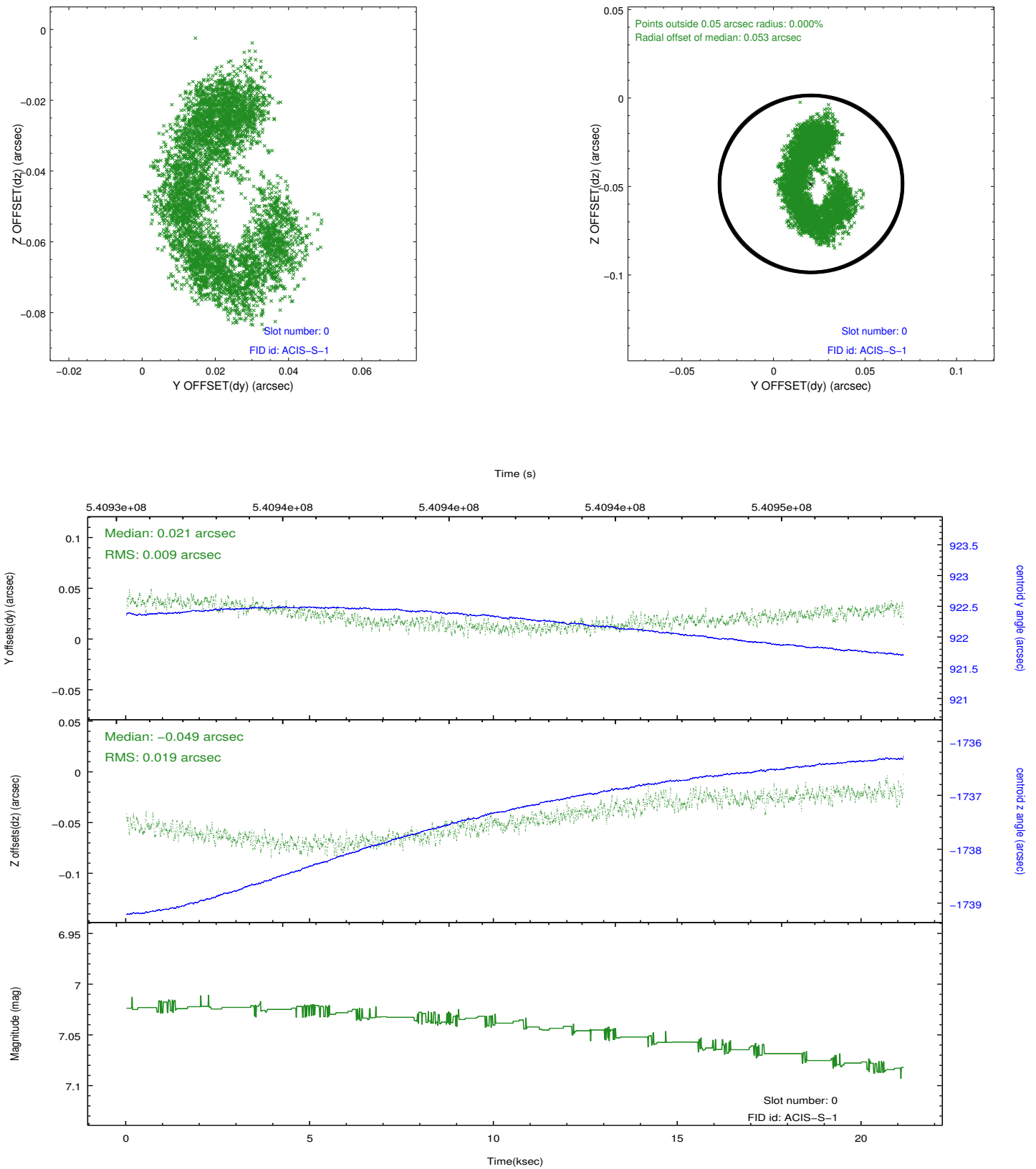


2.4.5 Slot 7

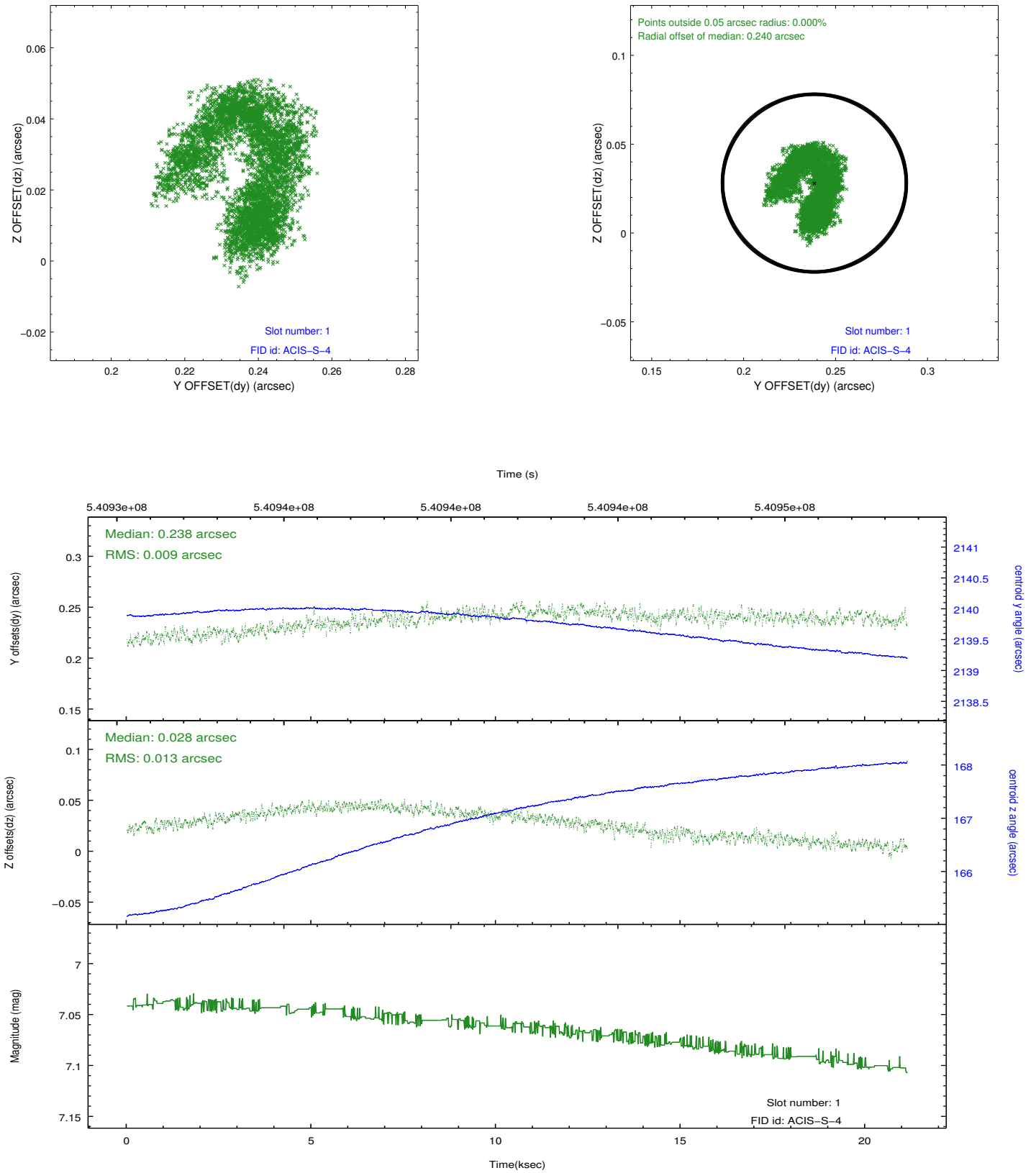


2.5 FID Slots

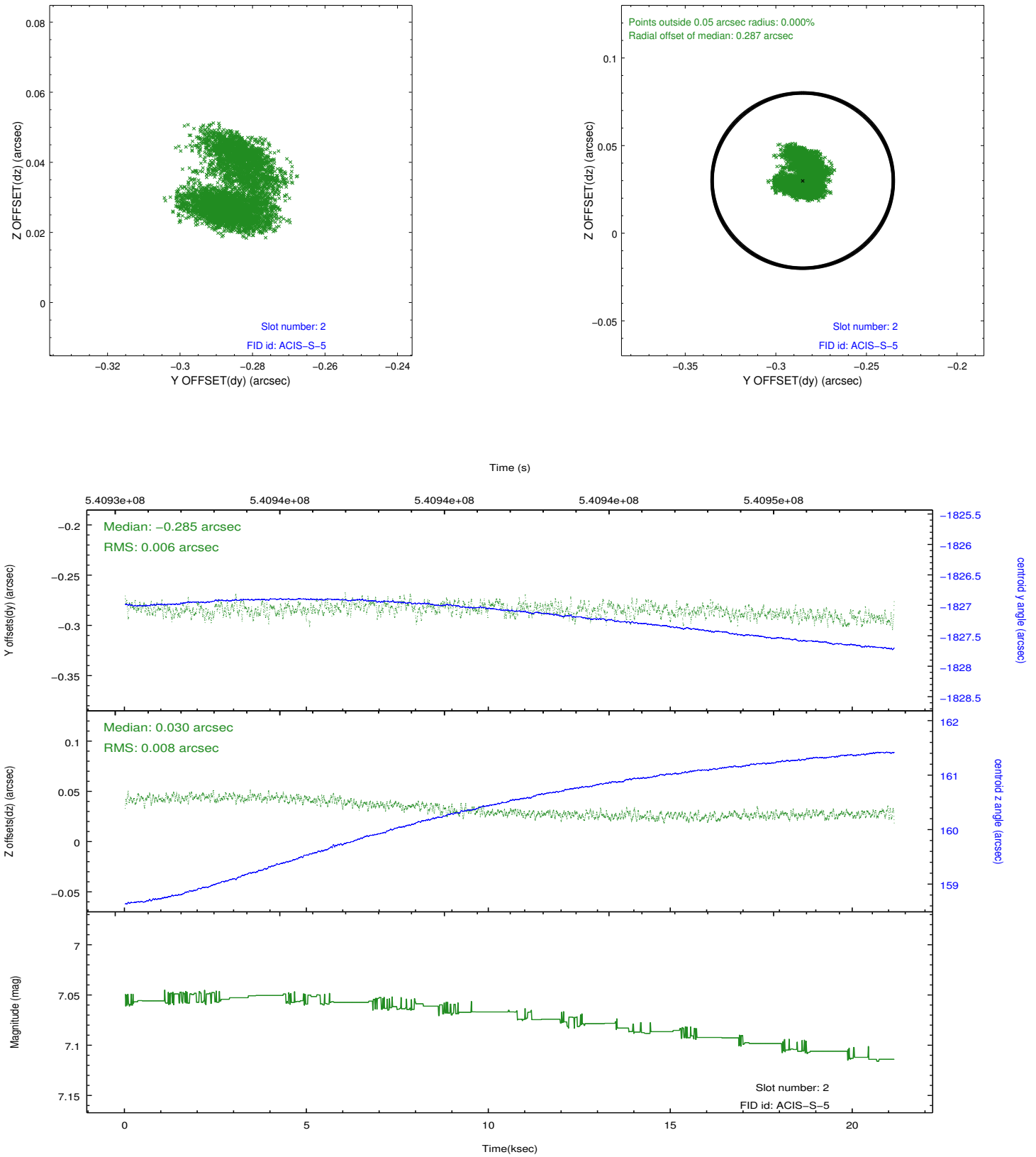
2.5.1 Slot 0



2.5.2 Slot 1



2.5.3 Slot 2



A Summary

A.1 Status

V&V Scientist	Beth Sundheim
V&V Date (YYYY-MM-DD)	2015.02.22
V&V Edition	1
V&V Disposition and Status	OK
V&V Charge Time	21.066514591932

A.2 Comments