

V&V Reference Report

L2 ASCDS Version : 10.3.3

Observation 17476 - L2 Version 1
Chandra X-Ray Center

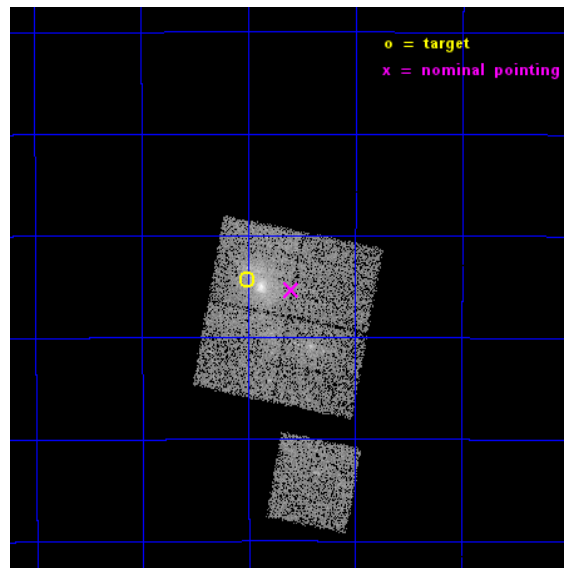
L2 Processing Date : Apr 21 2015

Contents

1	Front	2
2	OBI	3
2.1	OBI	3
2.1.1	Images	3
2.1.2	Bias	3
2.1.3	Parameters	4
2.1.4	Events	4
2.2	Compared Parameters	5
2.3	Aspect	6
2.4	Star Slots	9
2.4.1	Slot 3	9
2.4.2	Slot 4	10
2.4.3	Slot 5	11
2.4.4	Slot 6	12
2.4.5	Slot 7	13
2.5	FID Slots	14
2.5.1	Slot 0	14
2.5.2	Slot 1	15
2.5.3	Slot 2	16
A	Summary	17
A.1	Status	17
A.2	Comments	17

1 Front

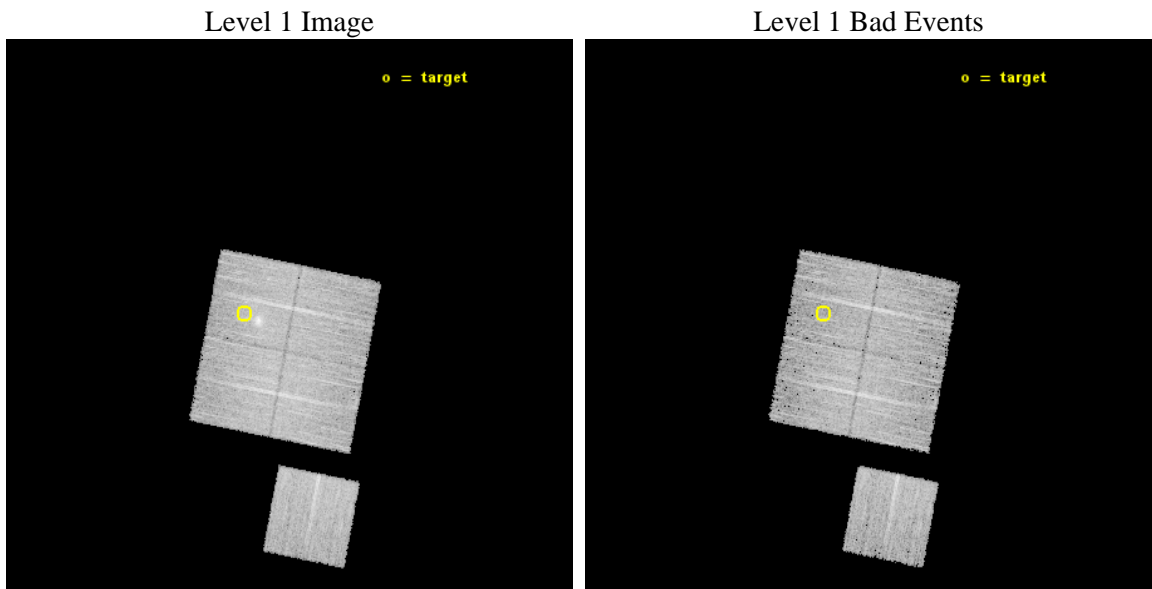
seq_num	801535	Sequence number
obs_id	17476	Observation id
title	G256.45-65.71 Followup - A Unique Shock-like Structure in A Planck Selected Galaxy Cluster	Proposal title
observer	Dr. Stephen Murray	Principal investigator
object	G256.45-65.71	Source name
dtcycle	0	
cycle	P	events from which exps? Prim/Second/Both
ra_targ	36.50375	Observer's specified target RA [deg]
dec_targ	-41.904722	Observer's specified target Dec [deg]
ra_nom	36.399517565211	Nominal RA [deg]
dec_nom	-41.922273952362	Nominal Dec [deg]
roll_nom	191.13907263289	Nominal Roll [deg]
revision	1	Processing version of data
ontime	14077.100108385	Sum of GTIs [s]
livetime	13893.172432059	Livetime [s]
ontime0	14073.959108233	Sum of GTIs [s]
ontime1	14077.100108385	Sum of GTIs [s]
ontime2	14077.100108385	Sum of GTIs [s]
ontime3	14077.100108385	Sum of GTIs [s]
ontime6	14077.100108385	Sum of GTIs [s]
l2events	41849	Number of level 2 events



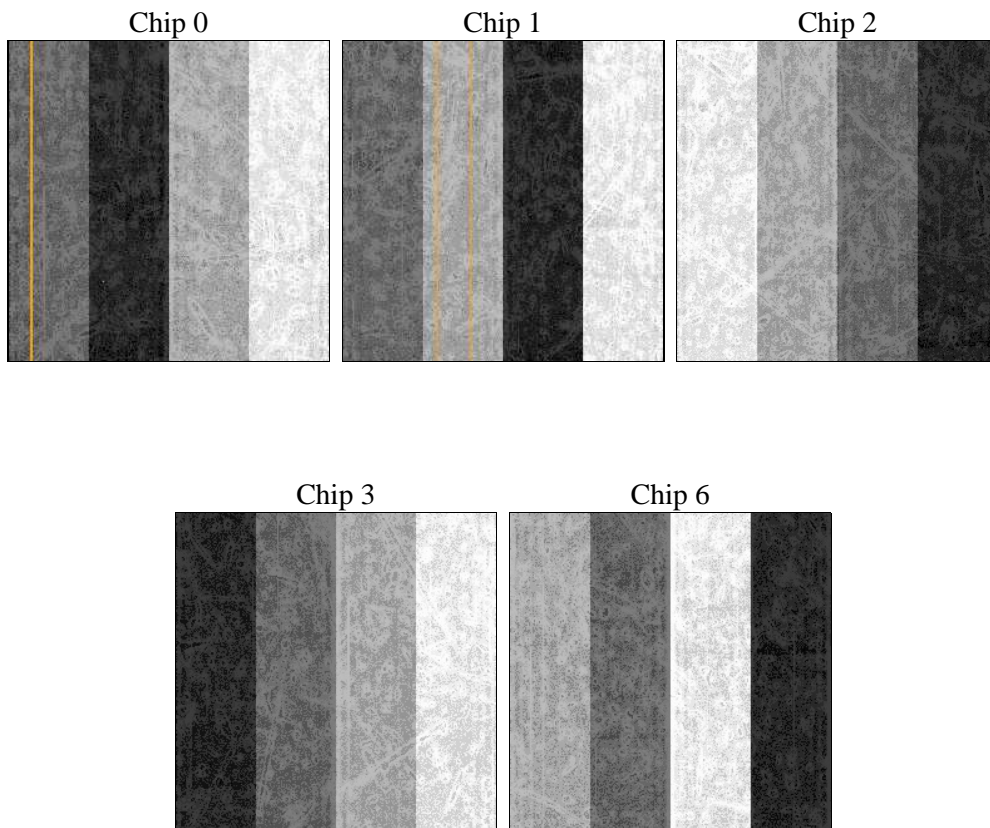
2 OBI

2.1 OBI

2.1.1 Images



2.1.2 Bias



2.1.3 Parameters

obi_num	0	Obi number	sched_exp_time	14000.000000	[s] Scheduled observation exposure time
ascdsver	10.3.3	Processing system revision	ontime	14077.100108385	Sum of GTIs [s]
caldsver	4.6.7	 	ontime0	14073.959108233	Sum of GTIs [s]
date	2015-04-21T14:09:55	Date and time of file creation	ontime1	14077.100108385	Sum of GTIs [s]
revision	1	Processing version of data	ontime2	14077.100108385	Sum of GTIs [s]
			ontime3	14077.100108385	Sum of GTIs [s]
			ontime6	14077.100108385	Sum of GTIs [s]
			l1events	323314	Number of level 1 events

2.1.4 Events

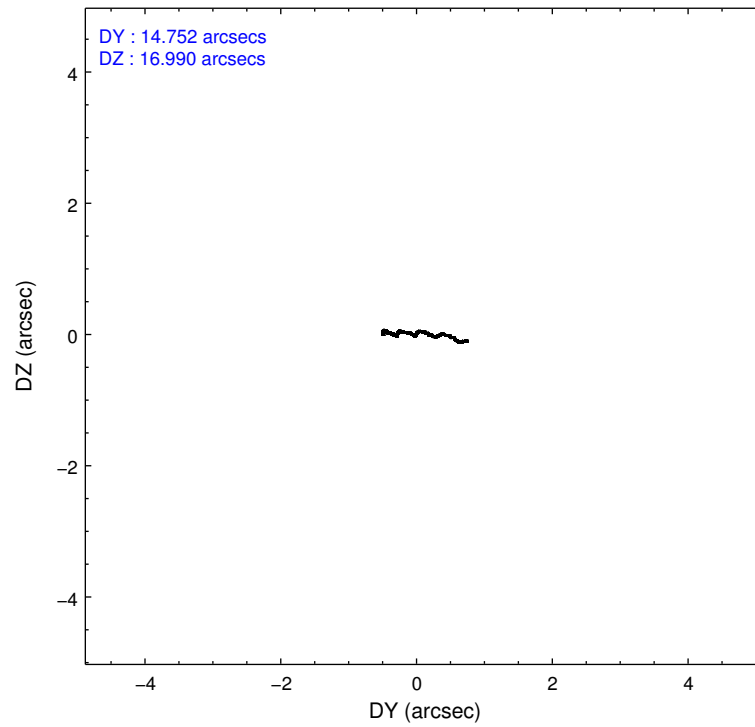
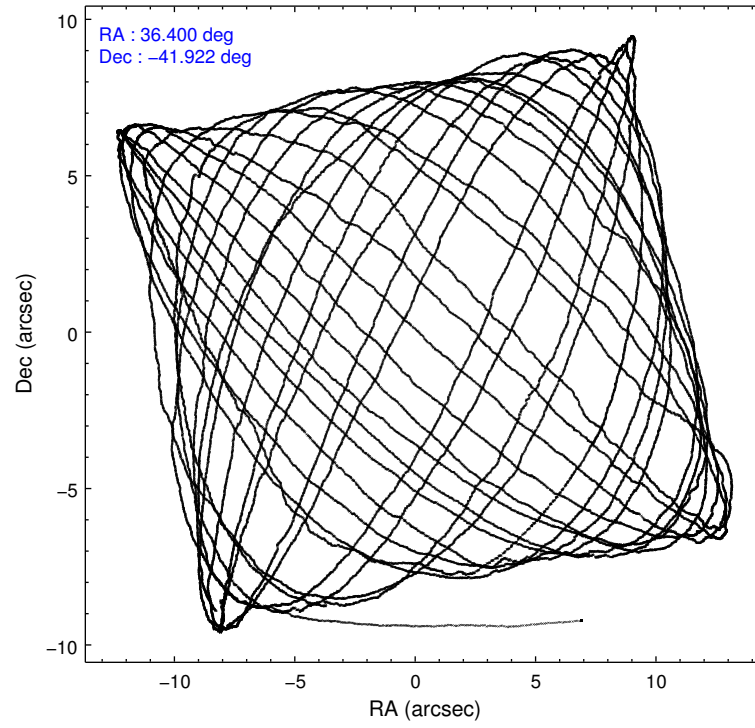
	ccd 0	ccd 1	ccd 2	ccd 3	ccd 6
level 1 events	59471	67472	67232	64942	64197
rejected events	51620	51526	58764	56634	56507
rejected %	86%	76%	87%	87%	88%

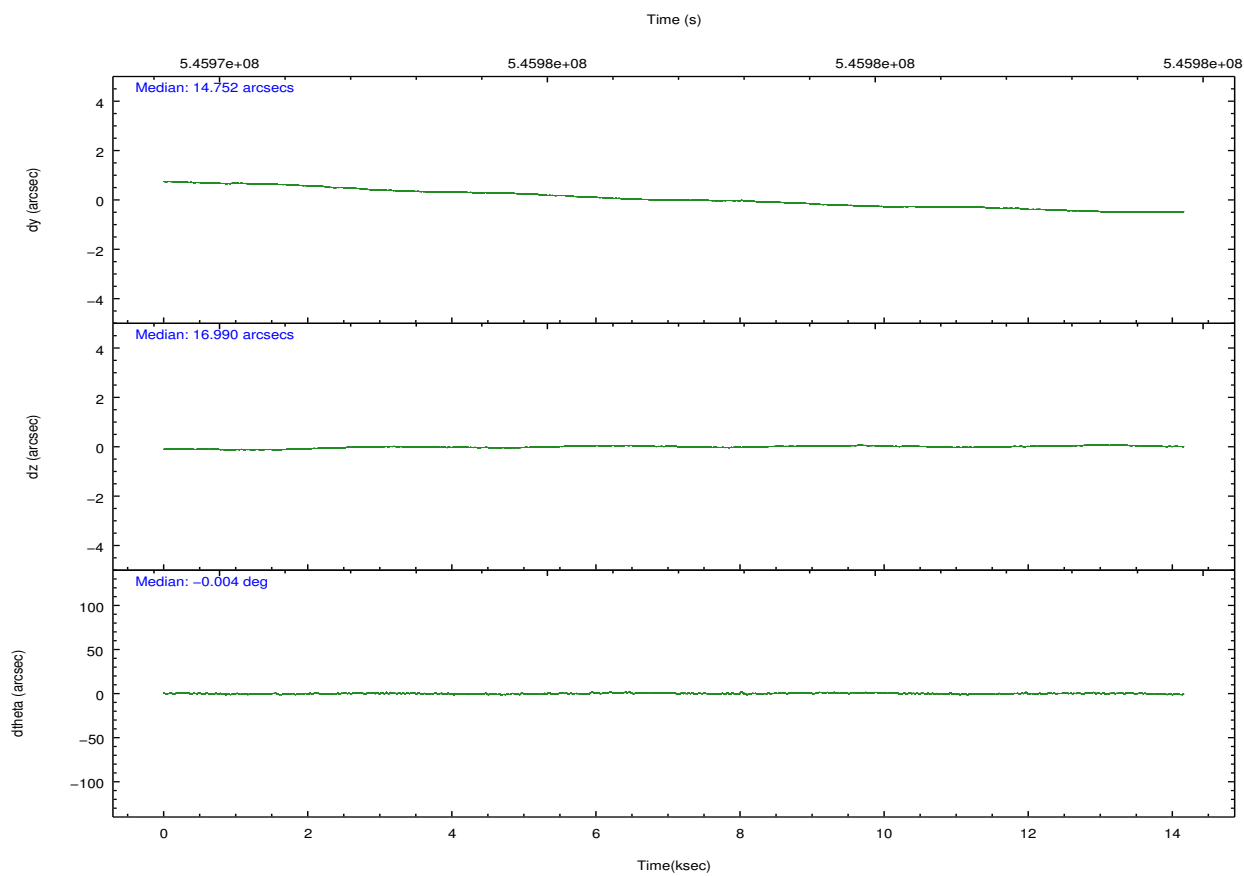
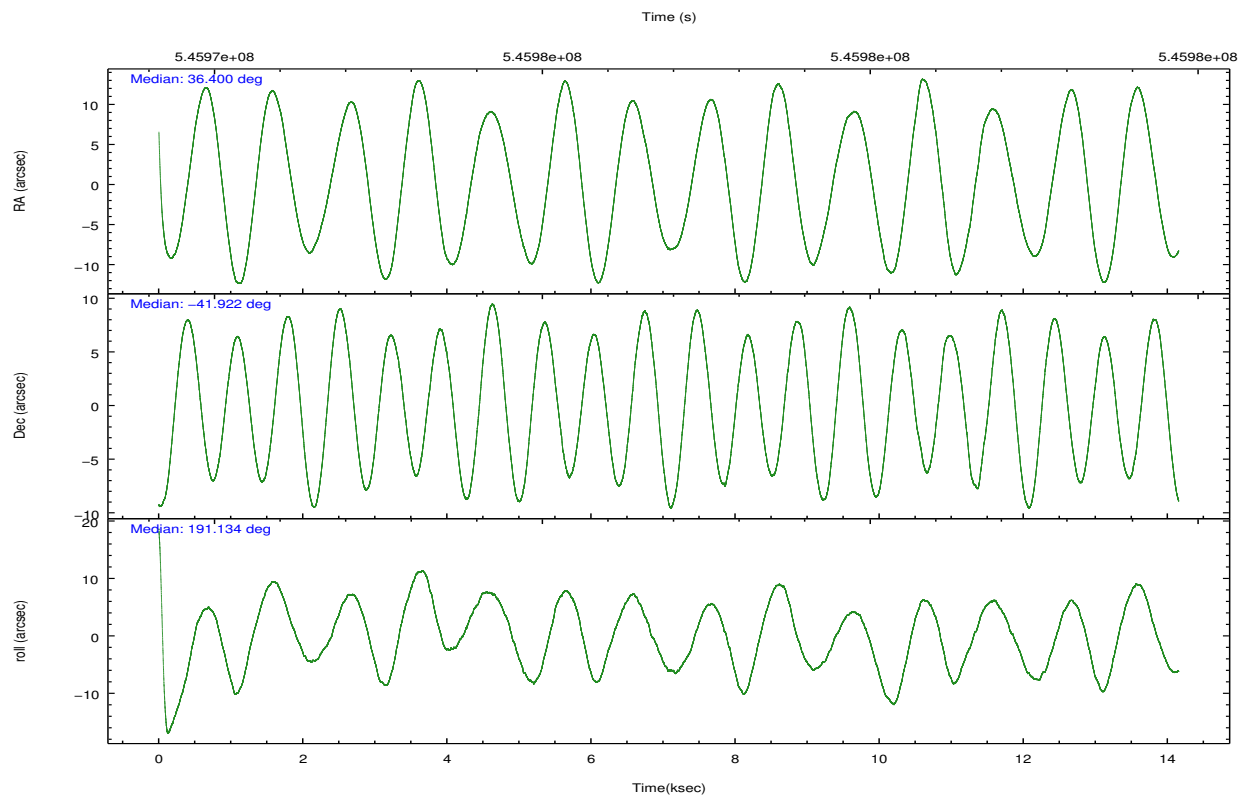
	ccd 0	ccd 1	ccd 2	ccd 3	ccd 6
grade 0 events	2801	8916	3450	3384	2633
	4%	13%	5%	5%	4%
grade 1 events	19	57	38	32	29
	0%	0%	0%	0%	0%
grade 2 events	1860	2947	1925	1685	1724
	3%	4%	2%	2%	2%
grade 3 events	803	1026	831	868	738
	1%	1%	1%	1%	1%
grade 4 events	765	987	764	810	776
	1%	1%	1%	1%	1%
grade 5 events	3069	3132	2919	3509	3346
	5%	4%	4%	5%	5%
grade 6 events	1624	2082	1502	1563	1825
	2%	3%	2%	2%	2%
grade 7 events	48530	48325	55803	53091	53126
	81%	71%	83%	81%	82%

2.2 Compared Parameters

Parameter	Planned	Actual	Parameter	Planned	Actual
Instrument	ACIS	ACIS	Obspar format version number	7	7
Detector	ACIS-01236	ACIS-01236	Obspar file type	PREDICTED	ACTUAL
Grating	NONE	NONE	Obspar update status	NONE	UPDATED
Data mode	VFAINT	VFAINT	CCD I0 on	Y	Y
Observation mode	POINTING	POINTING	CCD I1 on	Y	Y
[deg] Pointing RA	36.427379	36.3995175652114	CCD I2 on	Y	Y
[deg] Pointing Dec	-41.904029	-41.92227395236193	CCD I3 on	Y	Y
[deg] Pointing Roll	190.948973	191.1390726328919	CCD S0 on	N	N
[mm] SIM focus pos	-0.782348	-0.7809083437167272	CCD S1 on	N	N
[mm] SIM defocus	0	0.001439871863259334	CCD S2 on	O1	Y
[mm] SIM translation stage pos	-243.592463	-243.5843520998312	CCD S3 on	N	N
[mm] SIM translation stage offset	10	9.991899096901562	CCD S4 on	N	N
[s] Observation start time (MET)	545970014.184000	545968535.88366	CCD S5 on	N	N
Observation start date	2015-04-21T02:19:07	2015-04-21T01:55:35	Number of optional ACIS chips dropped	0	0
[s] Observation end time (MET)	545984014.184000	545984845.17207	On-chip summing requested	N	N
Observation end date	2015-04-21T06:12:27	2015-04-21T06:27:25	Subarray requested	NONE	NONE
Read mode	TIMED	TIMED	Alternating exposures requested	N	N
			[s] Primary exposure time	0.000000	3.1

2.3 Aspect



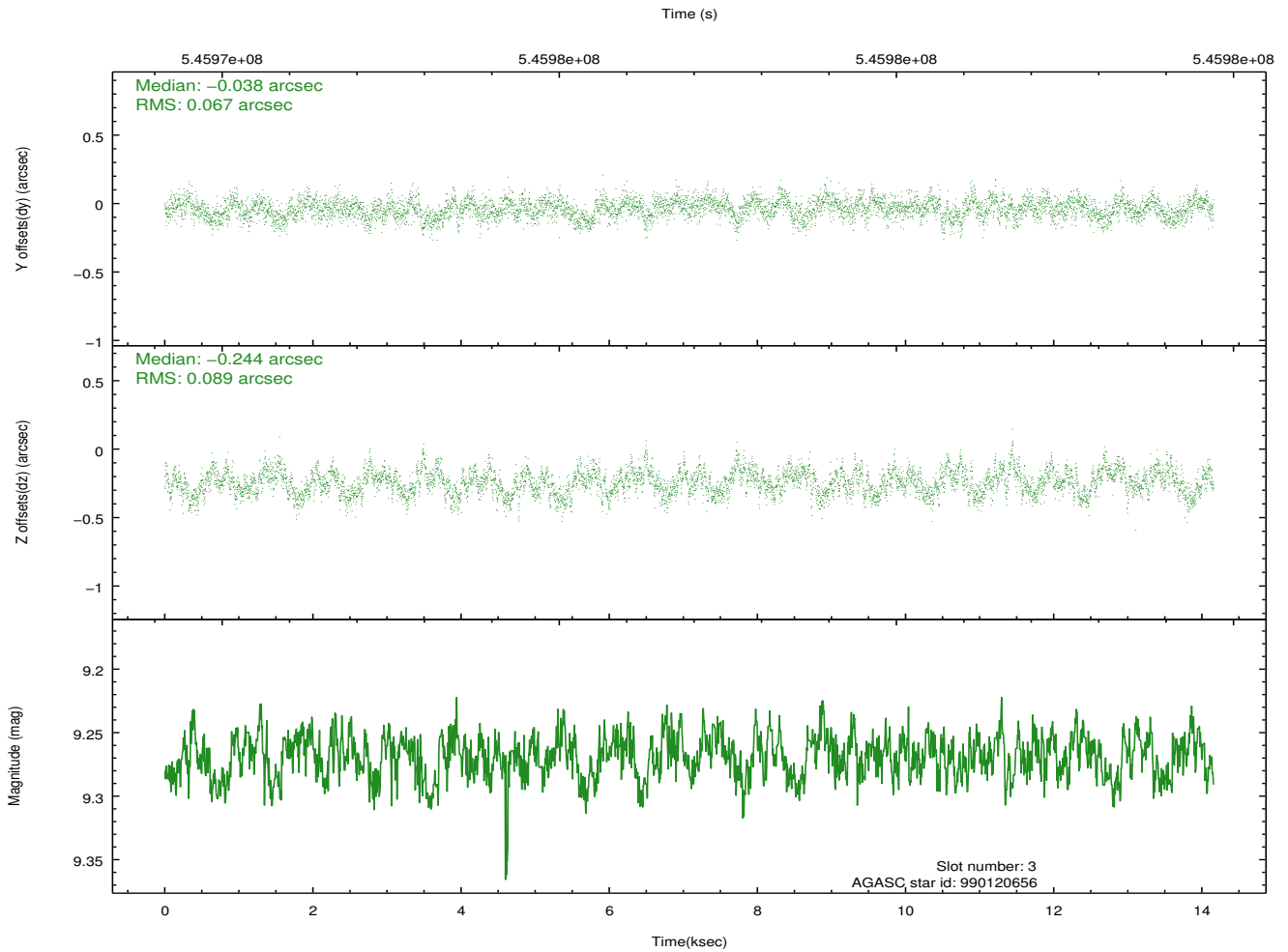
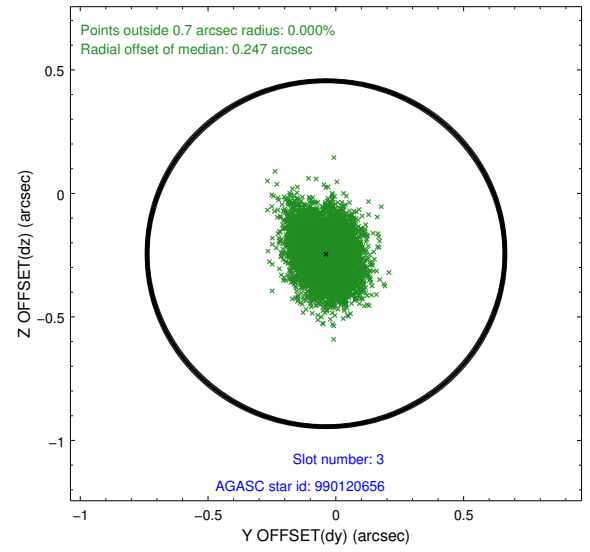
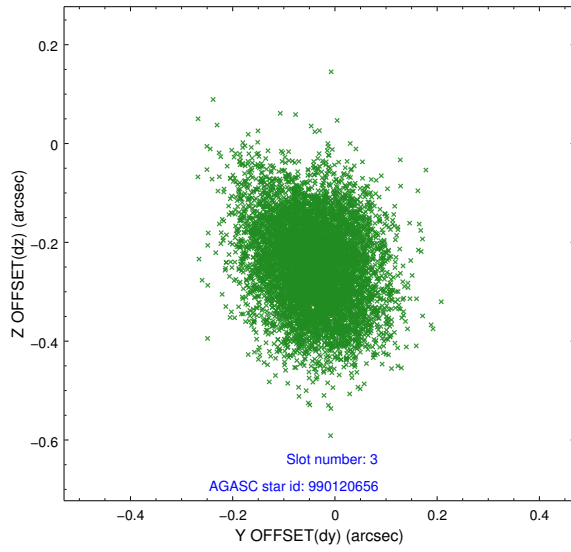


Slot Statistics

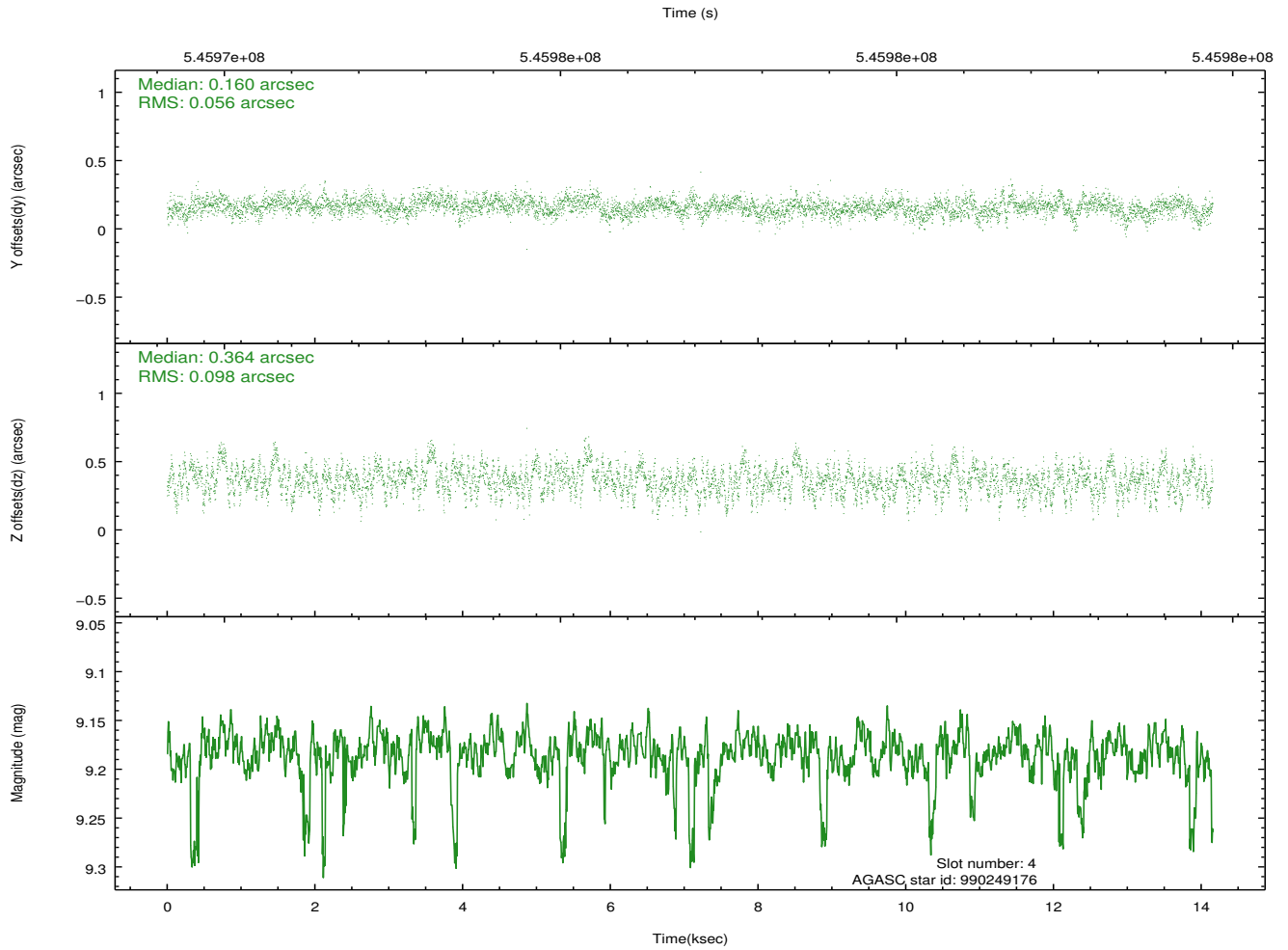
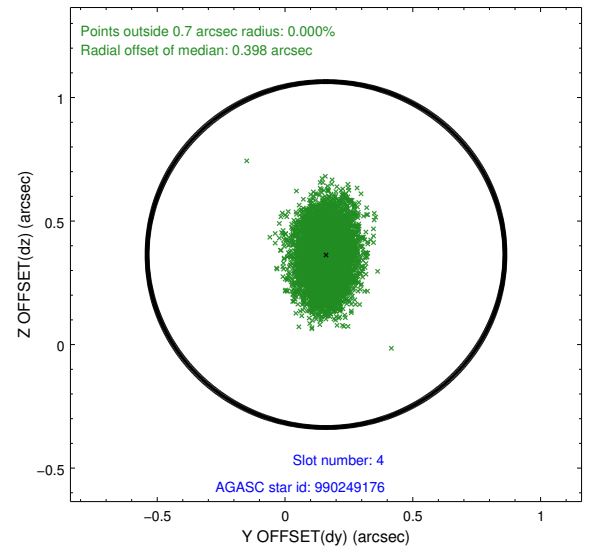
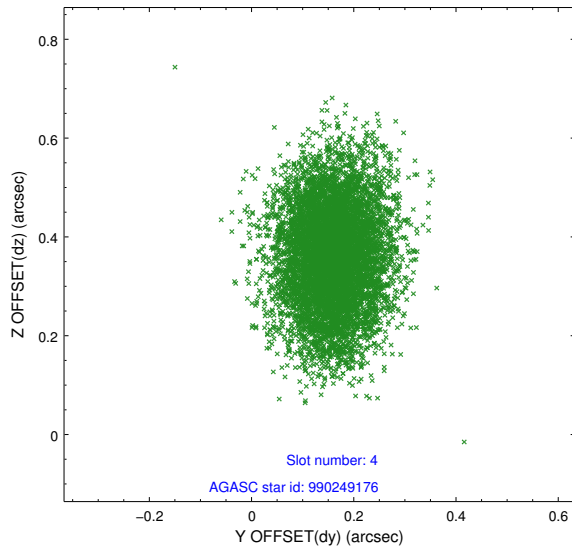
slot	status	used	id	mag	n_pts	med_dy	med_dz	dr1	dr2	ra	dec	mean_y	mean_z
0	FID		ACIS-I-1	7.23	3452	0.000	0.080	0.010	0.017	0.000000	0.000000	924.87	-635.16
1	FID		ACIS-I-5	7.18	3451	-0.185	0.028	0.009	0.015	0.000000	0.000000	-1823.32	1262.06
2	FID		ACIS-I-6	7.16	3453	0.094	-0.038	0.011	0.017	0.000000	0.000000	390.05	1906.95
3	GUIDE	used	990120656	9.27	6902	-0.038	-0.244	0.118	0.192	35.758117	-42.047149	1855.54	173.08
4	GUIDE	used	990249176	9.18	6904	0.160	0.364	0.118	0.201	36.943069	-41.181544	-1864.37	-2283.49
5	GUIDE	used	990251616	8.05	6904	-0.056	-0.074	0.085	0.140	37.299909	-42.075422	-2171.15	1061.15
6	GUIDE	used	990252000	8.40	6906	-0.141	-0.269	0.129	0.202	37.059802	-42.424951	-1292.65	2167.22
7	GUIDE	used	990252840	7.87	6902	0.074	0.228	0.069	0.113	36.693454	-41.366849	-1072.91	-1760.31

2.4 Star Slots

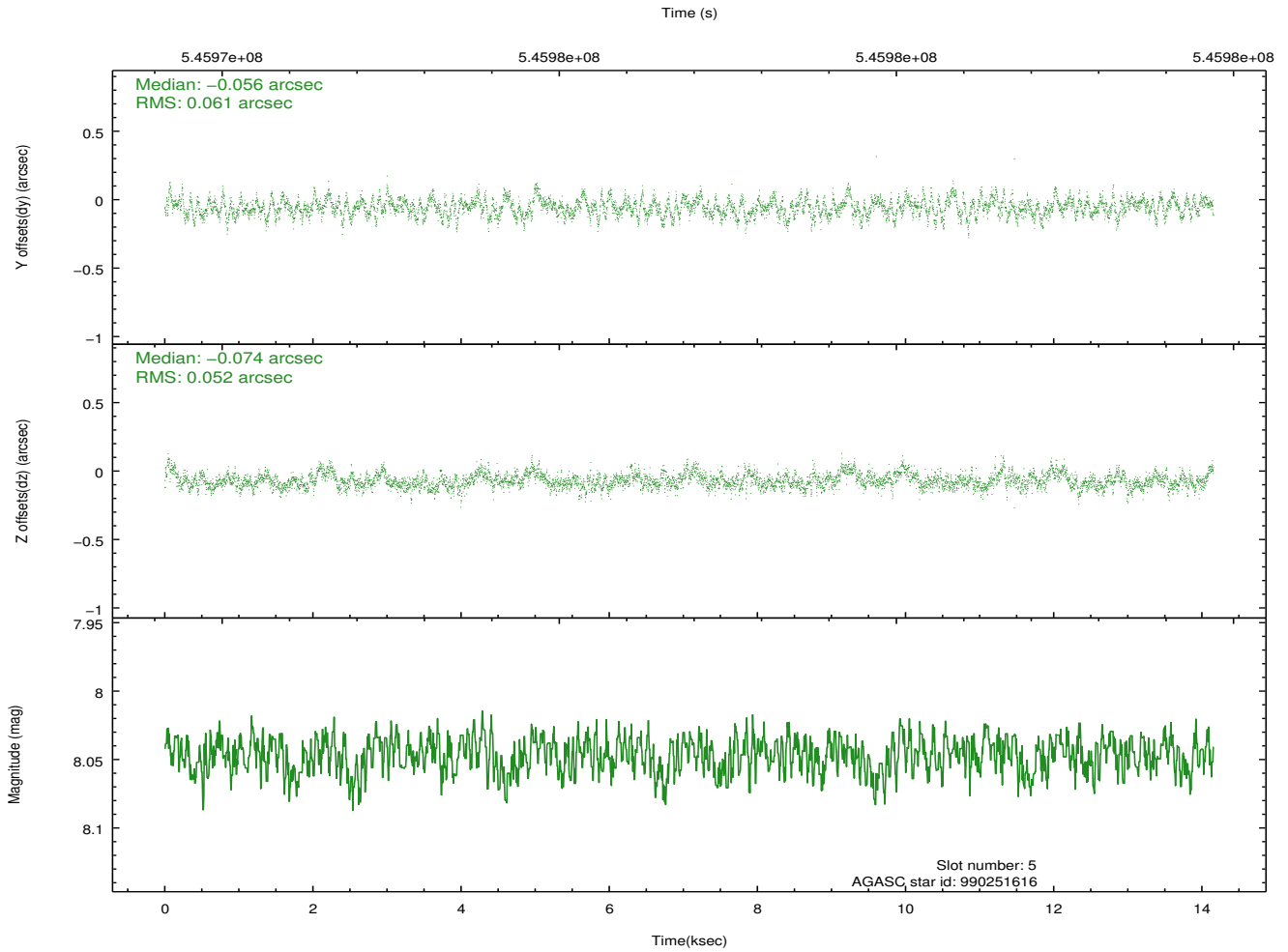
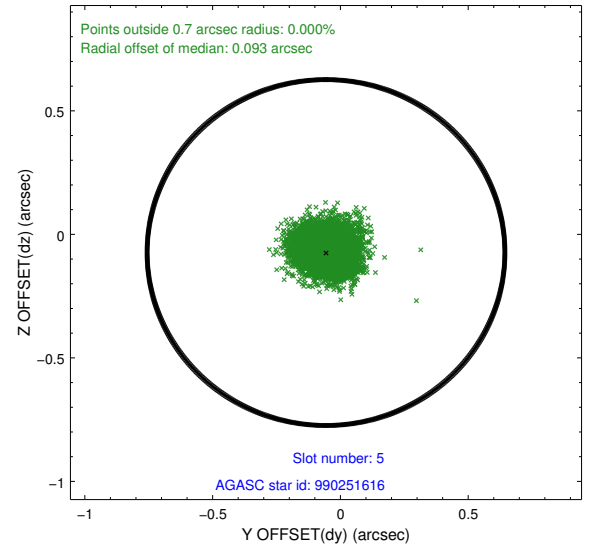
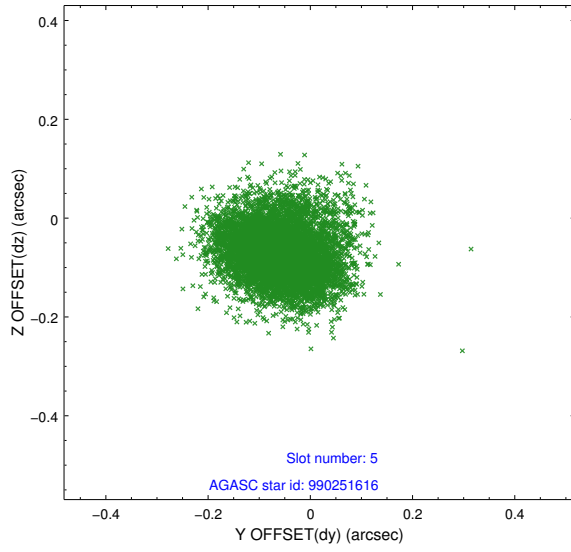
2.4.1 Slot 3



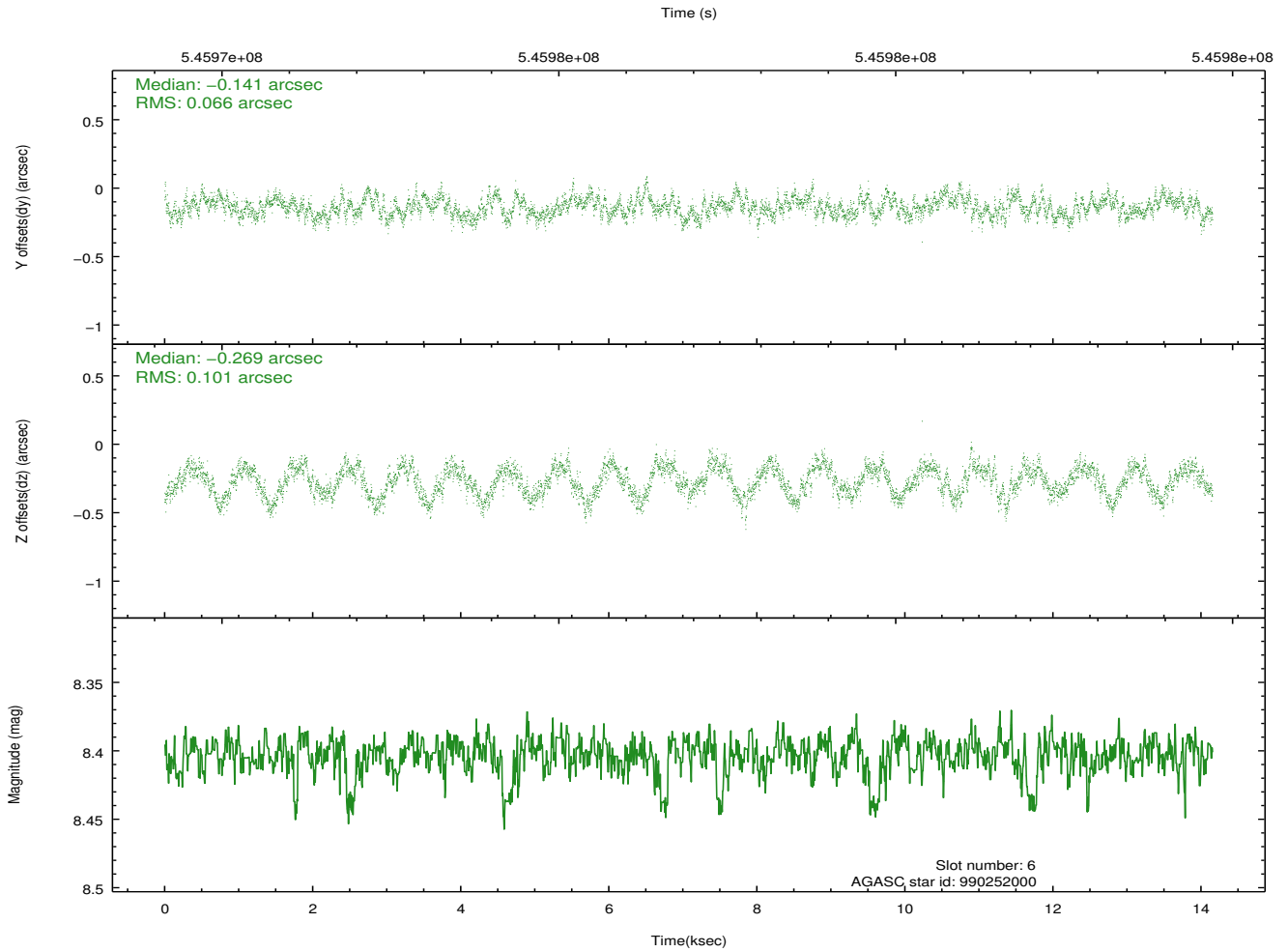
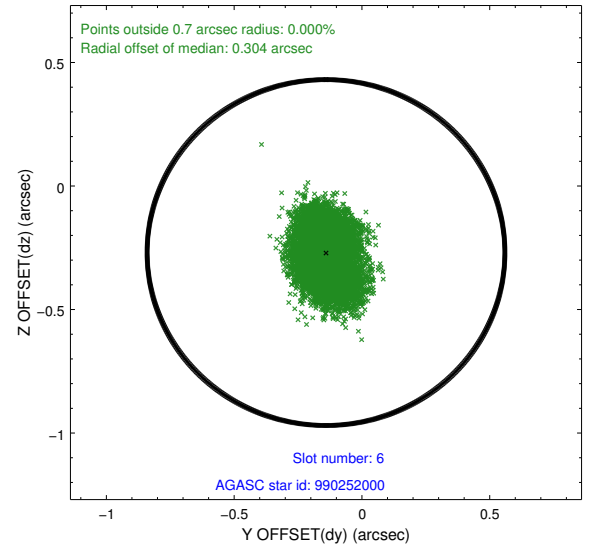
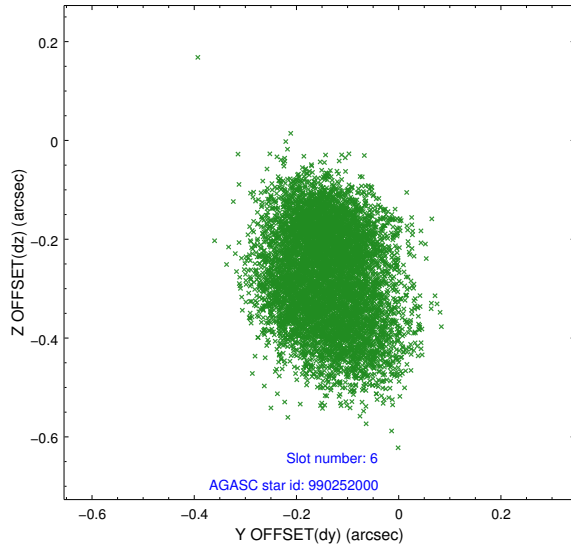
2.4.2 Slot 4



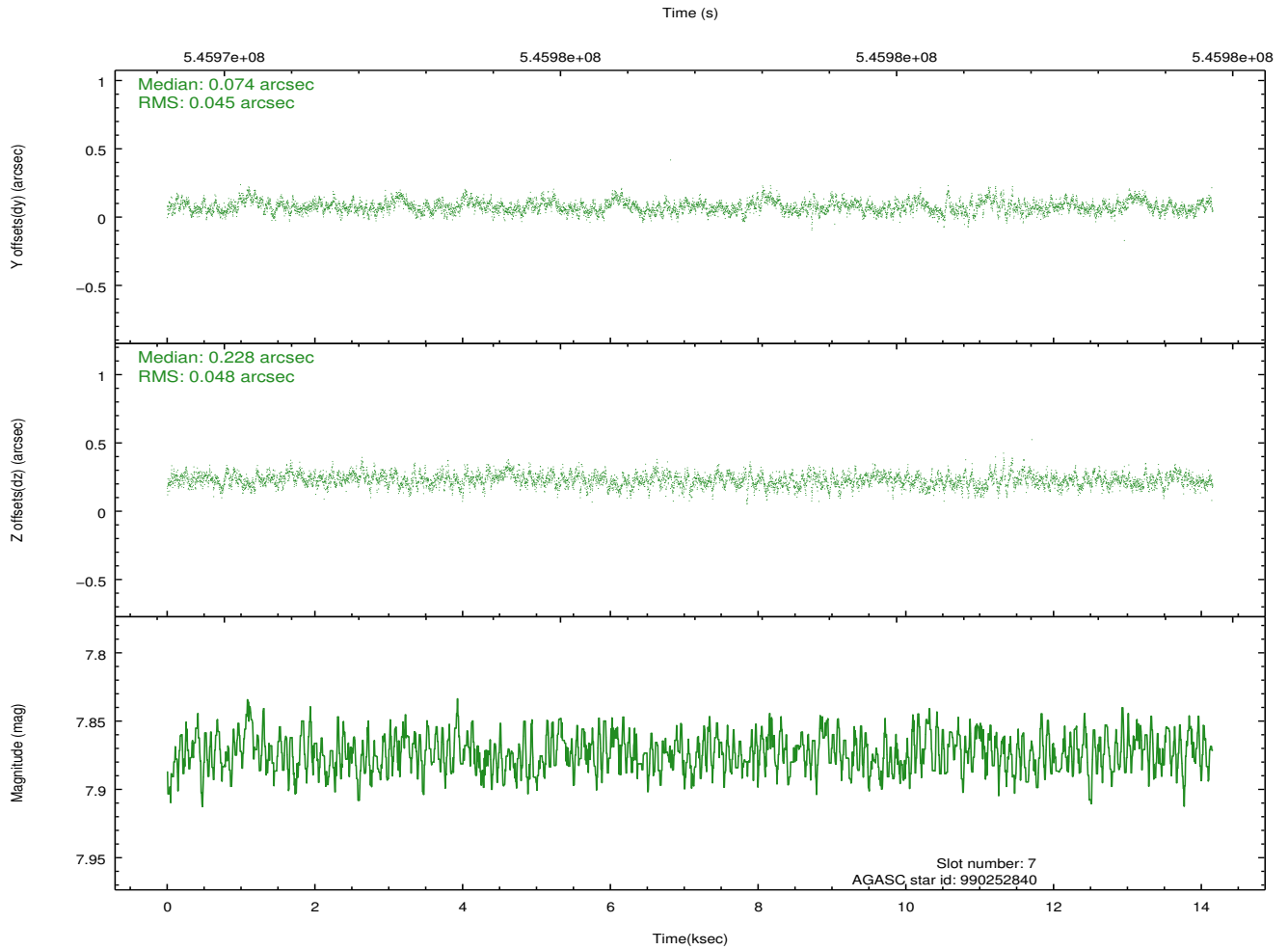
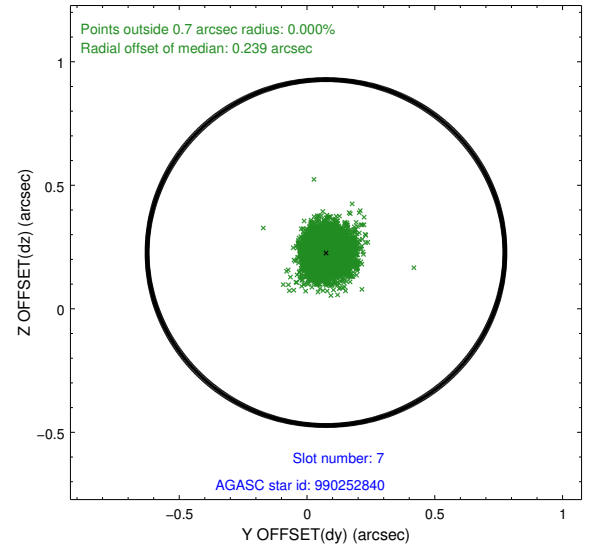
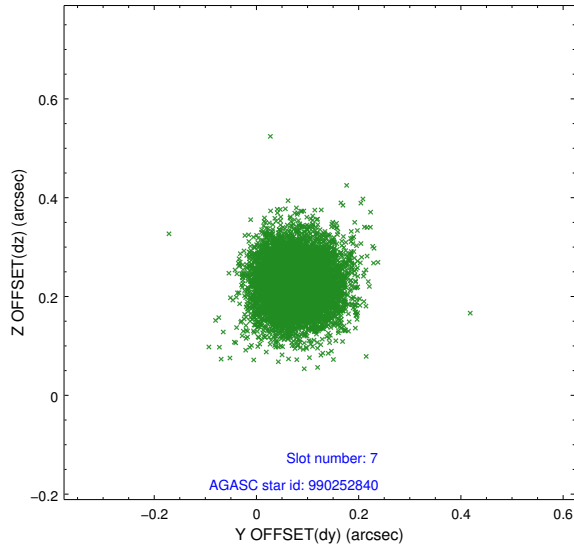
2.4.3 Slot 5



2.4.4 Slot 6

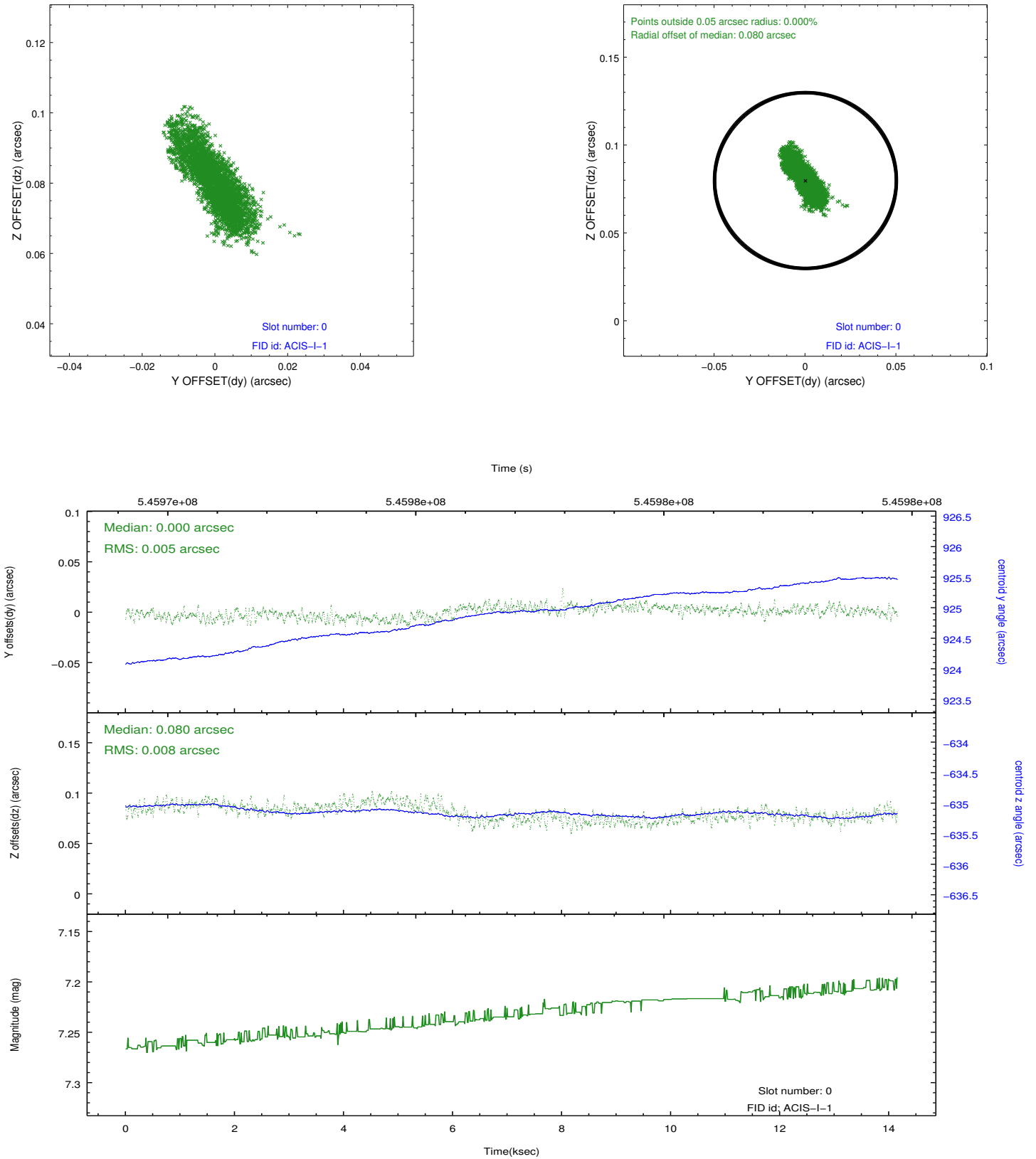


2.4.5 Slot 7

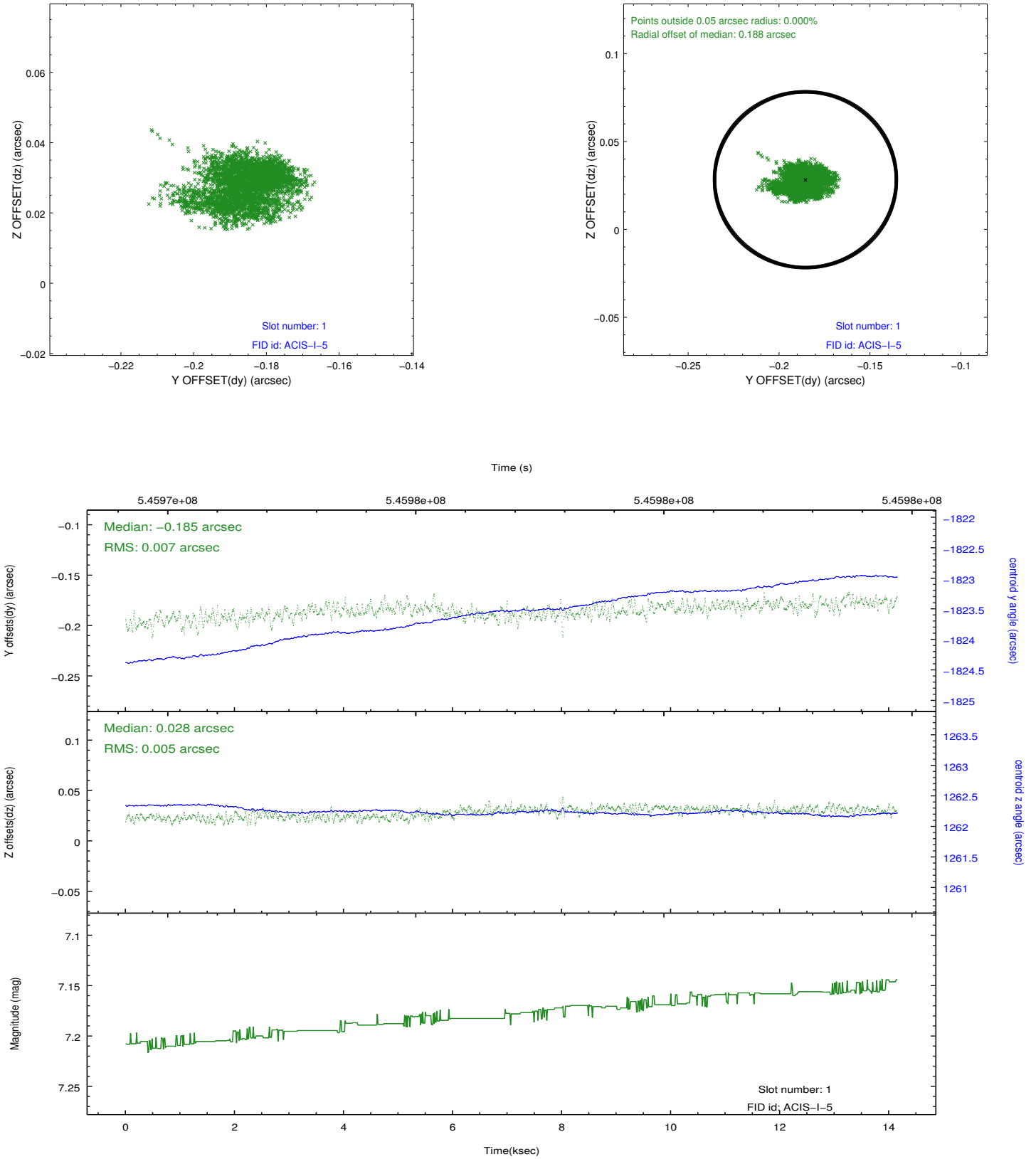


2.5 FID Slots

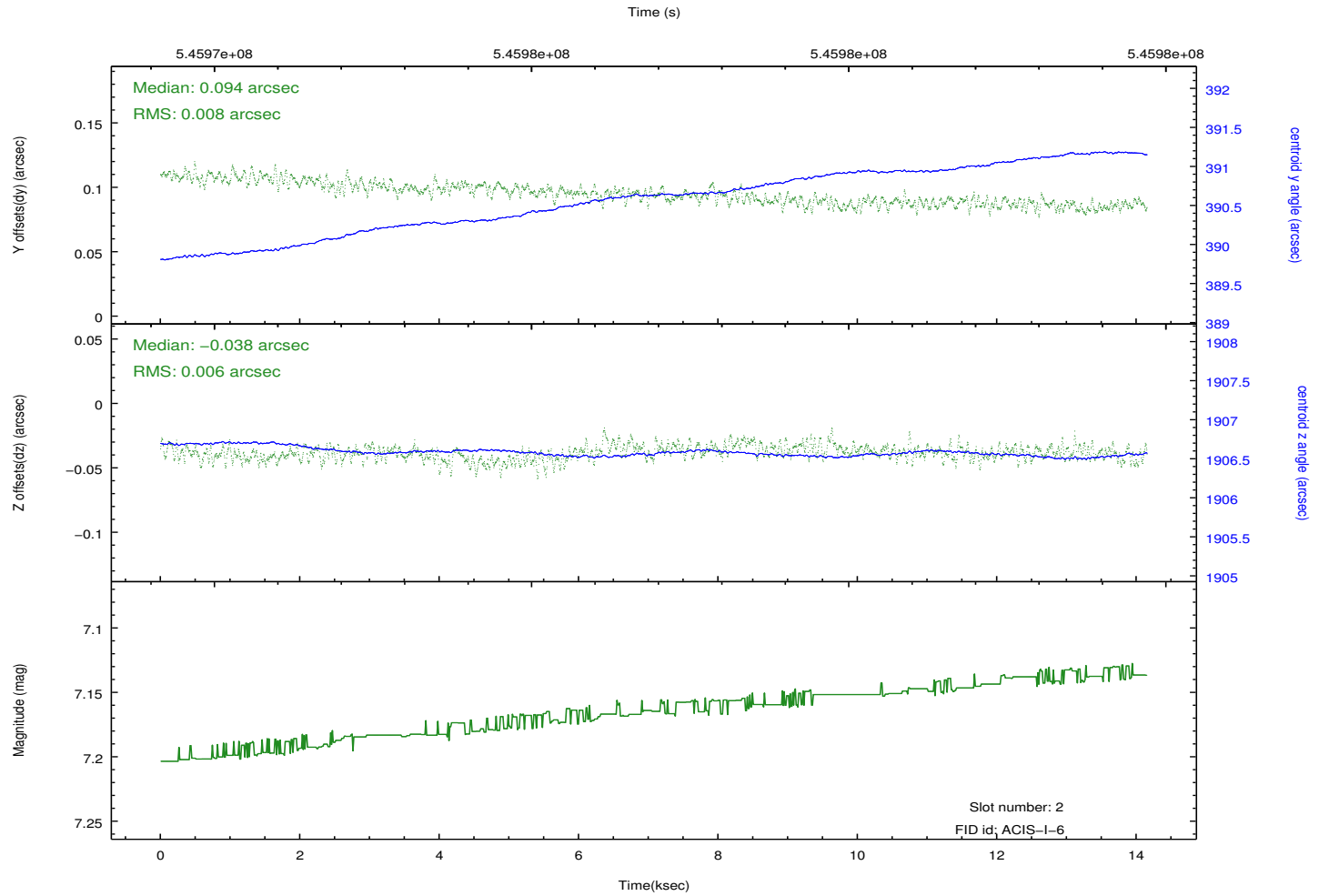
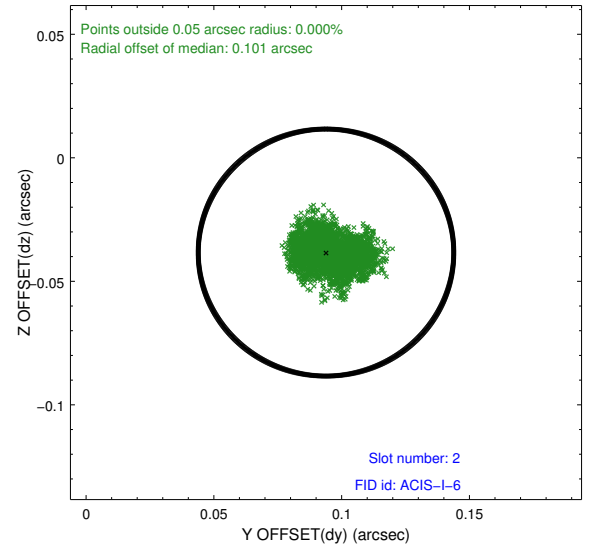
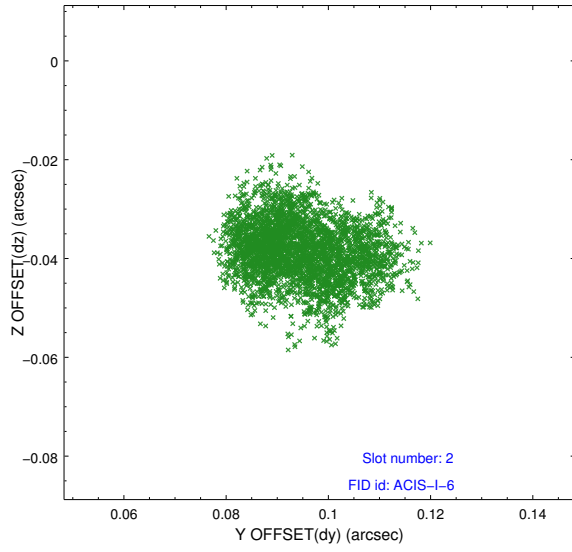
2.5.1 Slot 0



2.5.2 Slot 1



2.5.3 Slot 2



A Summary

A.1 Status

V&V Scientist	Beth Sundheim
V&V Date (YYYY-MM-DD)	2015.04.21
V&V Edition	1
V&V Disposition and Status	OK
V&V Charge Time	14.077100108385

A.2 Comments